

CODE NO. 2014

INDEX					
PROJECT	STRUCTURE	TYPE	SPAN	OVER	STATION
ST-X255(A)	50-36-6788	CONTINUOUS REINFORCED CONC. SLAB	THREE SPAN 26'-3", 31'-6", 26'-3" SKEW 45°00'	VON FANGE DITCH	STA. 486 +20.50 LINE "R"

SHEET NO.	SHEET DESIGNATION	SUBJECT	F.H.W.A. APPROVAL
1	ONE SHEET	TITLE SHEET	
2	ROAD SHEET	TYPICAL CROSS SECTION	
3	ONE SHEET	SOIL BORINGS	
4	S1 STR. 50-36-6788	LAYOUT	
5	S2	GENERAL PLAN	

STATE OF INDIANA
INDIANA DEPARTMENT OF HIGHWAYS

RIGHT OF WAY PLANS
FOR SPANS OVER 20 FEET
ON
ROAD NO. U.S. 50
PROJECT NO. ST - X255 (A) R/W

BEGINNING AT A POINT BEING THE SOUTHWEST CORNER OF THE NORTHWEST QUARTER OF SECTION 19, T-6-N, R-6-W THENCE NORTHERLY ALONG THE NORTH-SOUTH SECTION LINE 257.63 FEET TO A POINT BEING THE CENTER LINE OF U.S. 50, THENCE NORTHEASTERLY ALONG SAID CENTER LINE 975.06 FEET TO CENTER LINE OF STRUCTURE OVER VON FANGE DITCH. ALL POINTS BEING IN JACKSON TOWNSHIP, JACKSON COUNTY, INDIANA.

BRIDGE LENGTH: 0.016 MI.
ROADWAY LENGTH: 0.100 MI.
TOTAL LENGTH: 0.116 MI.
MAX. GRADE: 0.47 %

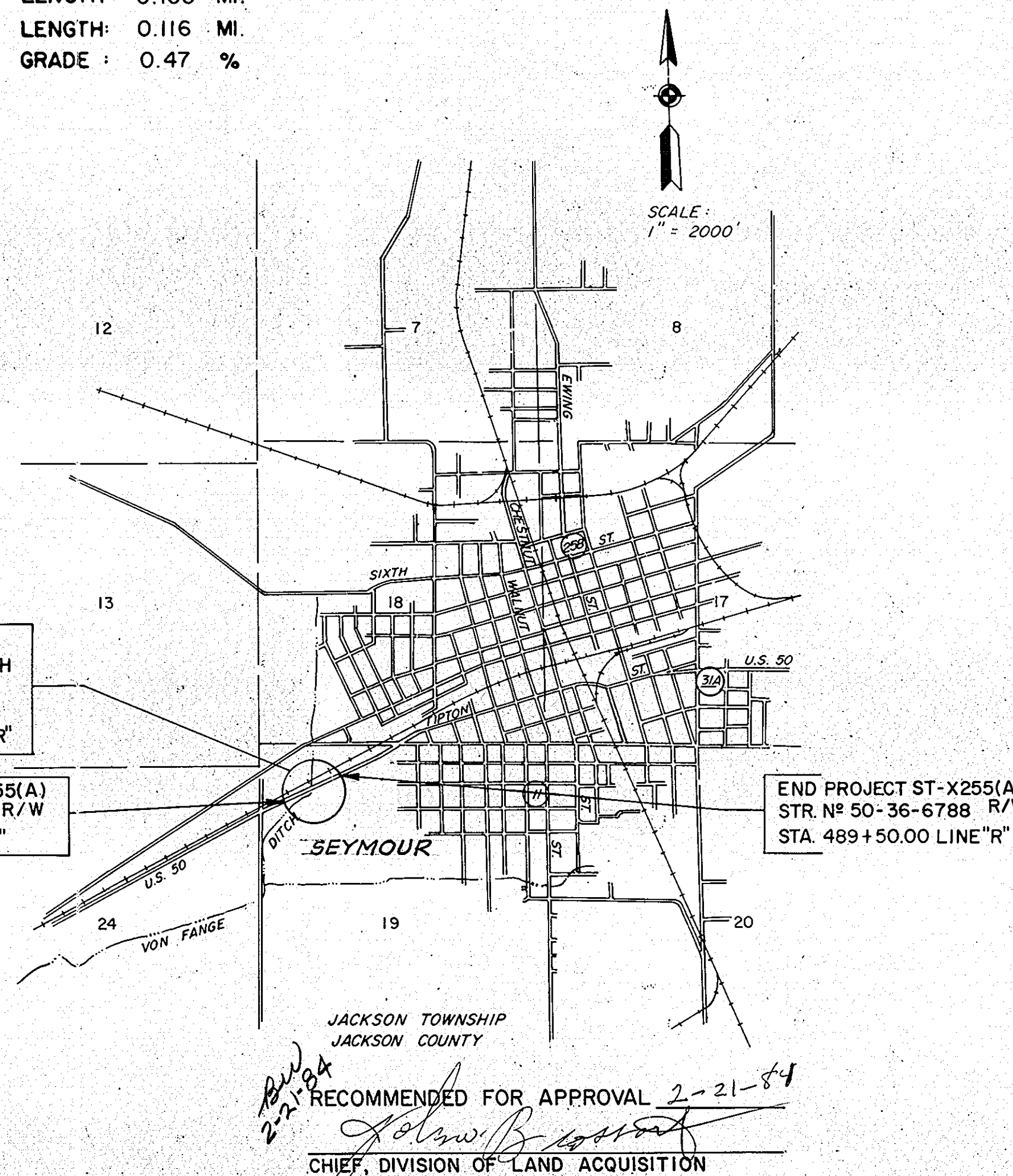
NOTE: WHEREVER "INDIANA STATE HIGHWAY COMMISSION" APPEARS IN THESE PLANS, IT SHALL BE INTERPRETED AS "INDIANA DEPARTMENT OF HIGHWAYS" EXCEPT THE 1978 INDIANA STATE HIGHWAY COMMISSION SPECIFICATIONS SHALL BE USED.

TRAFFIC DATA		
A.D.T. (1982)		7045 V.P.D.
A.D.T. (2002 PROJECTED)		9715 V.P.D.
D.H.V. (2002 PROJECTED)		972 V.P.D.
TRUCKS		D.H.V. 11 % A.D.T. 12 %
DESIGN SPEED		60 M.P.H.
ACCESS CONTROL		NONE

R/W INDEX	
SHEET NO.	DESIGNATION
1	TITLE SHEET
2	PARCEL LISTING FOR LAND ACQUISITION
3	PLAT NO. 1
4	TYPICAL CROSS SECTION
5	LAYOUT
6	GENERAL PLAN
7	SUMMARY

THESE PLANS PREPARED BY
CLYDE E. WILLIAMS & ASSOCIATES INC.
PROFESSIONAL ENGINEERS
SOUTH BEND INDIANAPOLIS
CERTIFIED _____ DATE _____

REVISIONS		
DATE	SHEET NO.	REVISIONS
2-15-84	CHANGED	CENTERLINE BEARING TO N 63° 58' 00" E SHEET No. 5



INDEX CONTINUED				
STANDARD DRAWINGS				
SHEET NO.	SHEET DESIGNATION	SUBJECT	F.H.W.A. APPROVAL	ADOPTED REVISION #
BRIDGE STD. BR1		ALUMINUM BRIDGE RAILING		
BRIDGE STD. BR2		ALUMINUM BRIDGE RAILING DETAILS		
BRIDGE STD. BR3		STEEL BRIDGE RAILING		
BRIDGE STD. BR4		STEEL BRIDGE RAILING DETAILS		
BRIDGE STD. BR5		RAILING CONNECTION DETAILS		
BRIDGE STD. BR6		RAILING CONNECTION DETAILS		
BRIDGE STD. C1		MISCELLANEOUS DETAILS		
BRIDGE STD. C2		MISCELLANEOUS DETAILS		
BRIDGE STD. C3		MISCELLANEOUS DETAILS		
BRIDGE STD. C4		MISCELLANEOUS DETAILS		
BRIDGE STD. D		CASTING DETAILS ROADWAY DRAINS		
BRIDGE STD.				
BRIDGE STD. PB		PRESTRESSED CONCRETE TYPE I-BEAMS		
BRIDGE STD. PB		PRESTRESSED CONCRETE TYPE I-BEAMS		
BRIDGE STD. PB6		PRESTRESSED BOX BEAMS		
BRIDGE STD. PB		PRESTRESSED COMPOSITE BOX BEAMS WIDE		
BRIDGE STD. PB		PRESTRESSED COMPOSITE BOX BEAMS WIDE		
BRIDGE STD. PB10		TOLERANCES FOR FABRICATION OF PRESTRESSED BEAMS		
BRIDGE STD. PB11		ELASTOMERIC BEARING PAD DETAILS		
BRIDGE STD.				
BRIDGE STD. R2A		BRIDGE LIGHTING DETAILS		
BRIDGE STD. R2B				
BRIDGE STD. S1		MISCELLANEOUS DETAILS		
BRIDGE STD. SH1		STEEL SHOE DETAILS		
BRIDGE STD. T SHEET A		STANDARD TEMPORARY BRIDGE		
BRIDGE STD. T SHEET B		STANDARD TEMPORARY BRIDGE		
BRIDGE STD.				
BRIDGE STD.				
BRIDGE STD.				
BRIDGE STD.				
ROAD STD. SHEET A		STANDARD PAVEMENT JOINTS		
ROAD STD. SHEET B		STANDARD PAVEMENT JOINTS		
ROAD STD. SHEET MA		MISCELLANEOUS STANDARDS		
ROAD STD. SHEET MA		MISCELLANEOUS STANDARDS		
ROAD STD. SHEET MB		MISCELLANEOUS STANDARDS		
ROAD STD. SHEET MB2		MISCELLANEOUS STANDARDS		
ROAD STD. SHEET		MISCELLANEOUS STANDARDS		
ROAD STD. SHEET MC		MISCELLANEOUS STANDARDS		
ROAD STD. SHEET MC1		MISCELLANEOUS STANDARDS		
ROAD STD. SHEET MD		MISCELLANEOUS STANDARDS		
ROAD STD. SHEET MD		MISCELLANEOUS STANDARDS		
ROAD STD. SHEET MD		MISCELLANEOUS STANDARDS		
ROAD STD. SHEET MD		MISCELLANEOUS STANDARDS		
ROAD STD. SHEET ME		MISCELLANEOUS STANDARDS		
ROAD STD. SHEET ME		MISCELLANEOUS STANDARDS		
ROAD STD. SHEET		MISCELLANEOUS STANDARDS		
ROAD STD. SHEET MH		MISCELLANEOUS STANDARDS		
ROAD STD. SHEET MH		MISCELLANEOUS STANDARDS		
ROAD STD. SHEET MI		MISCELLANEOUS STANDARDS		
ROAD STD. SHEET		MISCELLANEOUS STANDARDS		
ROAD STD. SHEET		MISCELLANEOUS STANDARDS		
ROAD STD. SHEET MN		MISCELLANEOUS STANDARDS		
ROAD STD. SHEET		MISCELLANEOUS STANDARDS		
ROAD STD. SHEET MP		MISCELLANEOUS STANDARDS		
ROAD STD. SHEET		MISCELLANEOUS STANDARDS		
ROAD STD. SHEET MQ		MISCELLANEOUS STANDARDS		
ROAD STD. SHEET MR		MISCELLANEOUS STANDARDS		
ROAD STD. SHEET				
ROAD STD.		STANDARD REINF. CONCRETE BOX CULVERTS		
ROAD STD.		STANDARD REINF. CONCRETE CULVERTS		
ROAD STD. SHEET GR		GUARD RAIL CLASS		
ROAD STD. SHEET GR		GUARD RAIL CLASS		
ROAD STD. SHEET GR		GUARD RAIL CLASS		
ROAD STD. SHEET GR5		ALUMINUM GUARD RAIL DETAILS		
ROAD STD. SHEET GR6		STEEL TUBE GUARD RAIL DETAILS		
ROAD STD. SHEET GR				
ROAD STD. SHEET GR10		GUARD RAIL BURIED ENDS		
ROAD STD.				
ROAD STD. SHEET 9		TRAFFIC SIGN DETAILS		
ROAD STD. SHEET 1 DETOURS		STANDARD DETOUR SIGNS		
ROAD STD. SHEET 1A DETOURS		STANDARD DETOUR SIGNS		
ROAD STD. SHEET 1B DETOURS		STANDARD DETOUR SIGNS		
ROAD STD. SHEET 2 DETOURS		STANDARD DETOUR SIGNS		
ROAD STD. SHEET 2A DETOURS		STANDARD DETOUR SIGNS		
ROAD STD. SHEET 3 DETOURS		STANDARD DETOUR SIGNS		
ROAD STD. SHEET 3A DETOURS		STANDARD DETOUR SIGNS		
ROAD STD. SHEET 4 DETOURS		STANDARD DETOUR SIGNS		
ROAD STD. SHEET 5 DETOURS		STANDARD DETOUR SIGNS		
ROAD STD. SHEET 5A DETOURS		STANDARD DETOUR SIGNS		

INDIANA DEPARTMENT OF HIGHWAYS
STANDARD SPECIFICATIONS DATED 1978
TO BE USED WITH THESE PLANS.

RECOMMENDED FOR APPROVAL 2-17-84
[Signature]
ENGINEER OF BRIDGE DESIGN, INDIANA DEPARTMENT OF HIGHWAYS

APPROVED 2-22-84

[Signature]
CHIEF HIGHWAY ENGINEER - INDIANA DEPARTMENT OF HIGHWAYS
RIGHT OF WAY PLANS ONLY

FEDERAL HIGHWAY ADMINISTRATION
DEPARTMENT OF TRANSPORTATION
APPROVED: _____
DIVISION ENGINEER DATE

BRIDGE FILE: 50 - 36 - 6788

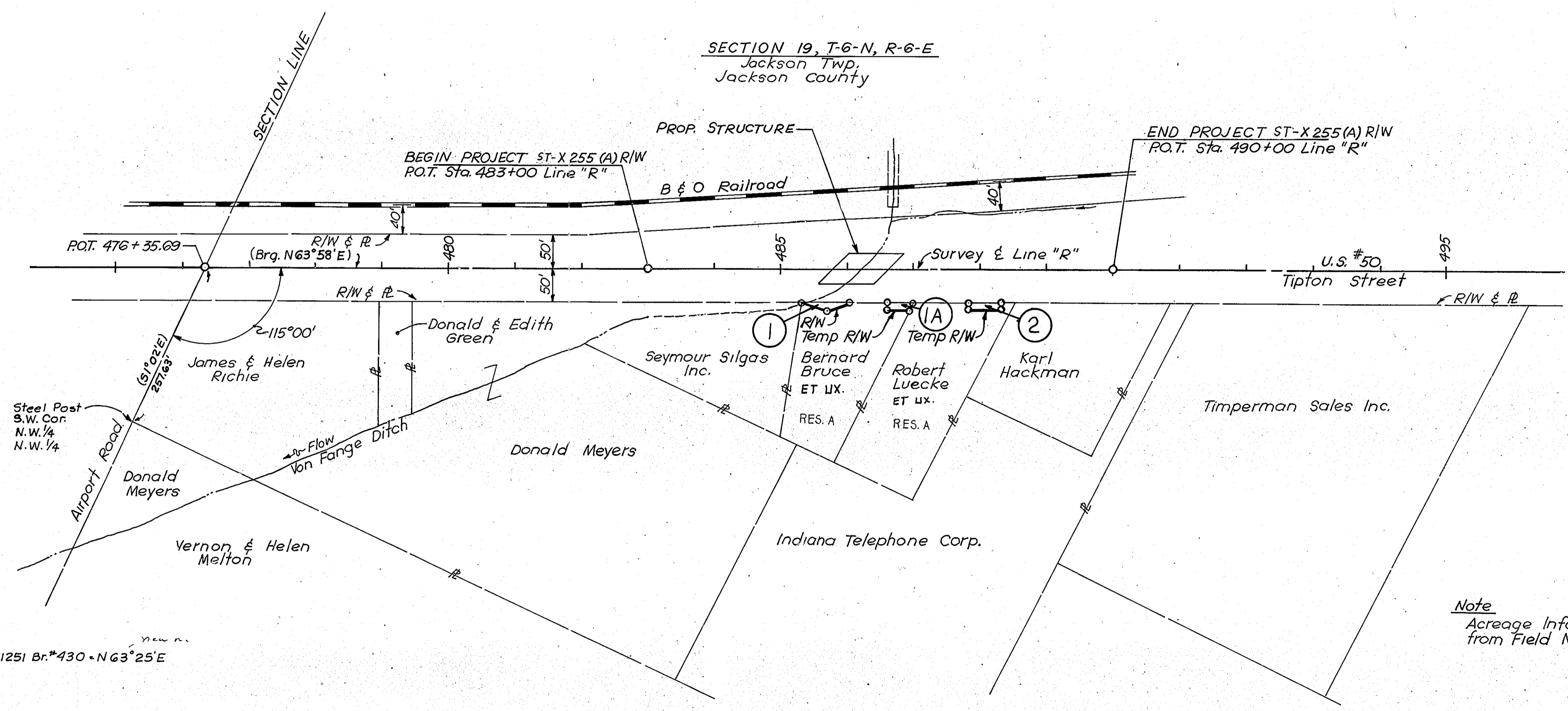
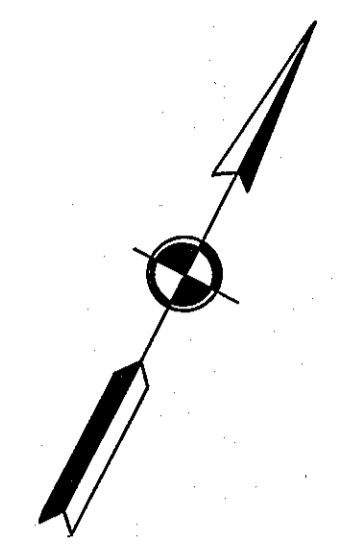
ROAD USR 56 COUNTY-JACKSON PROJECT ST-X255(A) L.A. CODE 2014 DATE 02/16/84

PARCEL LISTING FOR LAND ACQUISITION INDIANA DEPARTMENT OF HIGHWAYS

PARCEL NUMBER	GRANTOR	CENTER LINE	FROM APPROX STA.	TO APPROX STA.	PLAN SHEET	BRIDGE	TOTAL AREA	R/W EXISTING	NATURE TITLE ACQUIRED	LAND TO BE ACQUIRED	RESIDUE AREA	BLDG.
1	BRUCE, BERNARD ET UX.	R	485	486	3+5		0.878AC	0.195AC	FS	0.008AC	A= 0.675AC	
1A		R	486	487	3+5				TE	0.011AC		
2	LUECKE, ROBERT E. ET UX. R	R	488	488	3+5		1.096AC	0.178AC	TE	0.011AC	A= 0.918AC	

* (ASTERISK) IN THE BRIDGE COLUMN INDICATES THE PARCEL IS PARTIALLY OR COMPLETELY WITHIN THE LIMITS OF A BRIDGE PROJECT.
 * (DASH) IN THE BLDG. COLUMN INDICATES A BUILDING TO BE REMOVED IS PARTIALLY OR COMPLETELY WITHIN THE R/W REQUIRED.
 FS = FEE SIMPLE TITLE
 TE = TEMPORARY R/W

FEDERAL ROAD REGION NO.	STATE	PROJECT NO.	FISCAL YEAR	SHEET NO.	TOTAL SHEETS
5	IND.	ST-X255(A)R/W	1982	3	7



Bearing Equation
 Starting Brg. = N 63° 58' E
 Sht. #7 of Plans-Line "R"-50-K-1251 Br.#430 - N 63° 25' E
 See P#41 - Book #Br.430

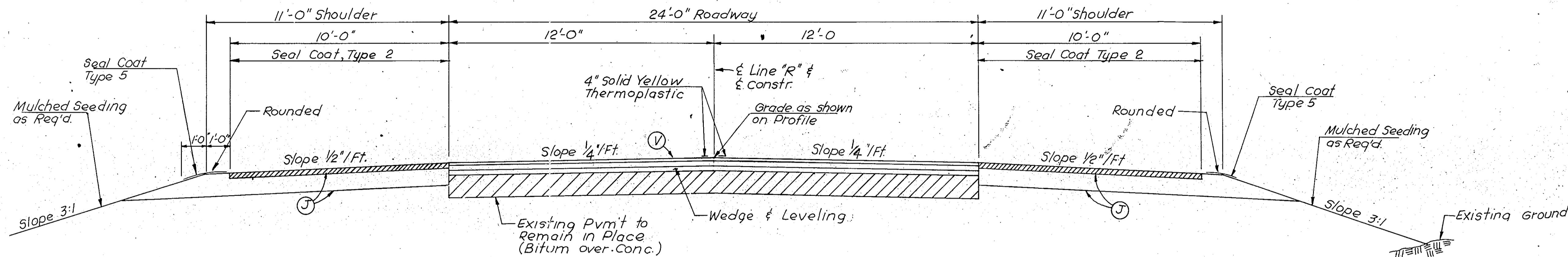
Note
 Acreage Information not available
 from Field Notes.

**PLAT NO. 1
 FOR DESIGN DEPARTMENT**

SHEET NO.3 OF 7

SCALE 1" = 100'

FEDERAL ROAD REGION NO.	STATE	PROJECT NO.	FISCAL YEAR	SHEET NO.	TOTAL SHEETS
	IND.	ST-X255(AR/W)	1982	4	7

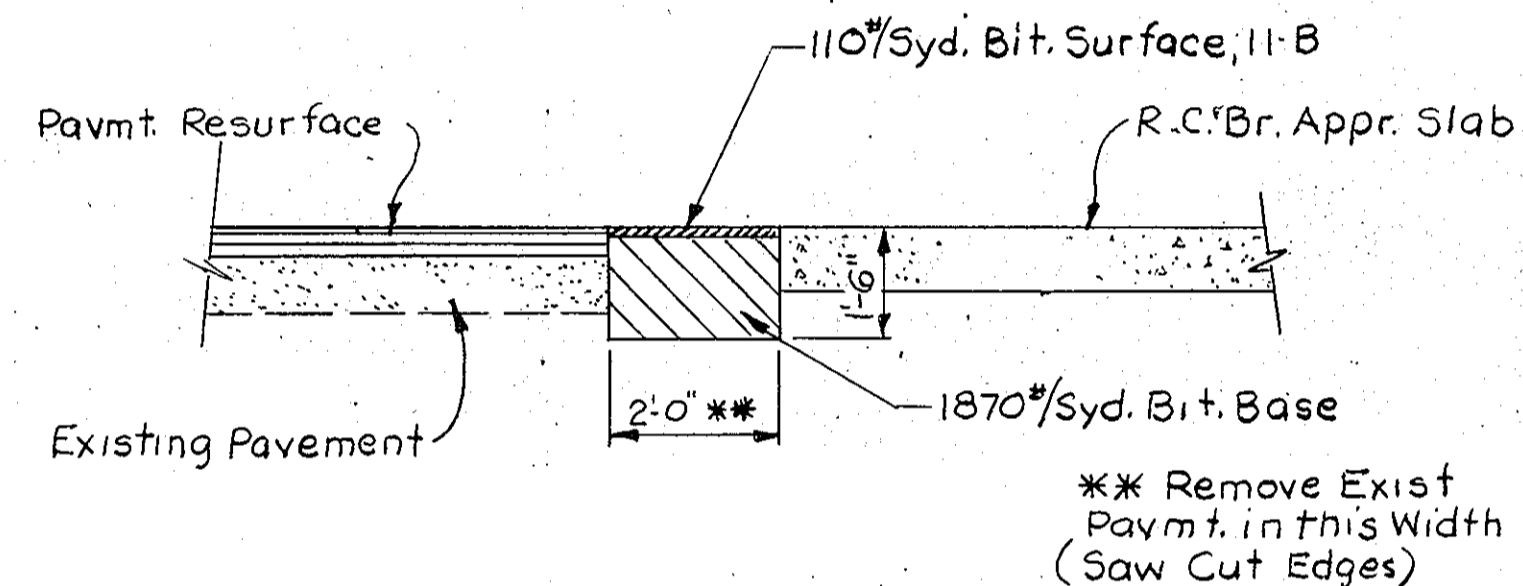


TYPICAL SECTION

FROM STA. 483+40 TO STA. 485+77.4
FROM STA. 486+96.1 TO STA. 489+50

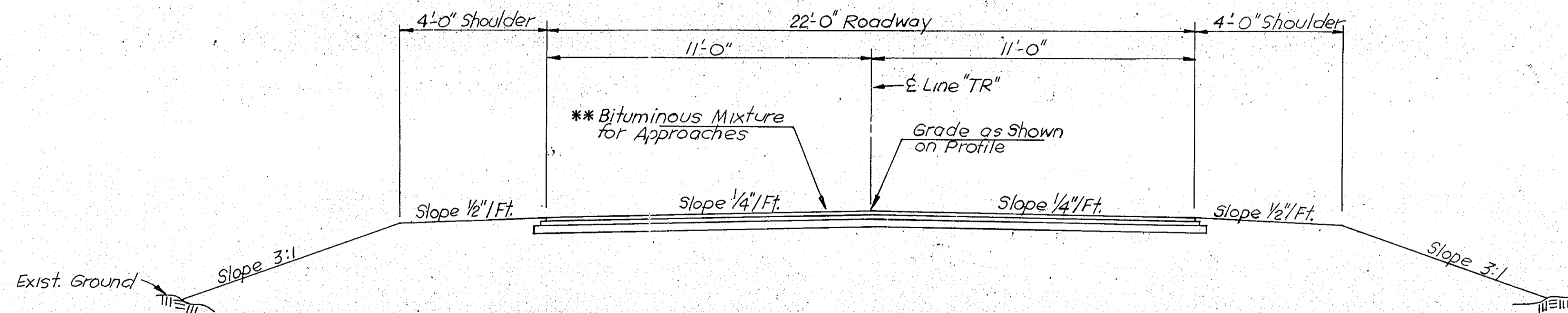
NOTE: The quantity "CrownVetch Seeding" shown on the Estimate of Quantities sheet is to be used at those locations where the slopes are 3:1 or steeper, or in areas requiring sand cut or sand fill, or as directed by the Engineer.

* NOTE: Unless otherwise specified the Contractor shall have the option of using either Hot Asphalt Concrete (H.A.C.) or Hot Asphalt Emulsion (H.A.E.) on all Bituminous items except surface.



PAVEMENT RELIEF JOINT DETAIL

Scale: 3/8" = 1'-0"



TYPICAL SECTION - TEMPORARY RUN-AROUND

FROM STA. 9+66.75 "TR" TO STA. 15+93.41 "TR"

** Bituminous Mixture for Approaches
110#/Syd. Hot A.C. Surface Type 11-B over
220#/Syd. Bituminous Base on
3" Type "P" Comp. Aggr. Base

** If Temporary Run-around is to be in place over winter "Bituminous Mixture for Approaches" to be:
110#/Syd. Bituminous Surface H.A.C., Type 11-B
990#/Syd. Bituminous Base

Ⓢ BITUMINOUS RESURFACE

* 110 #/Syd. Bitum. Surface H.A.C. Type 11B
220 #/Syd. Binder No 8 or No 9
165 #/Syd. Bitum. Base for Wedge and Leveling (min.)

Ⓣ 330 #/Syd. Bitum. Base (Size No. 5-D) on
9" Compacted Aggregate Base #53

TYPICAL CROSS SECTIONS

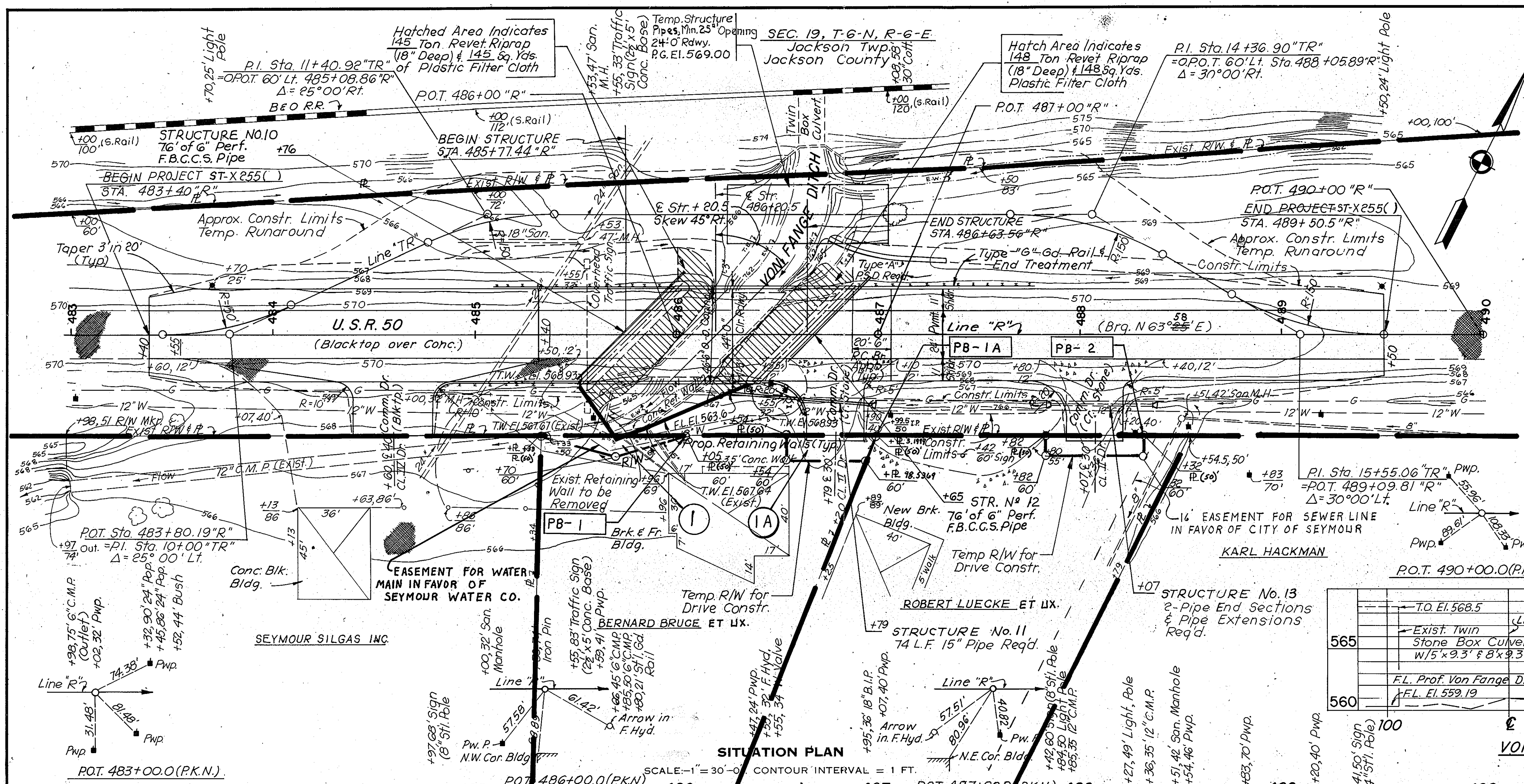
SCALE: 3/8" = 1'-0"

RECOMMENDED FOR APPROVAL _____

ENGINEER OF ROAD DESIGN - INDIANA STATE HIGHWAY COMMISSION

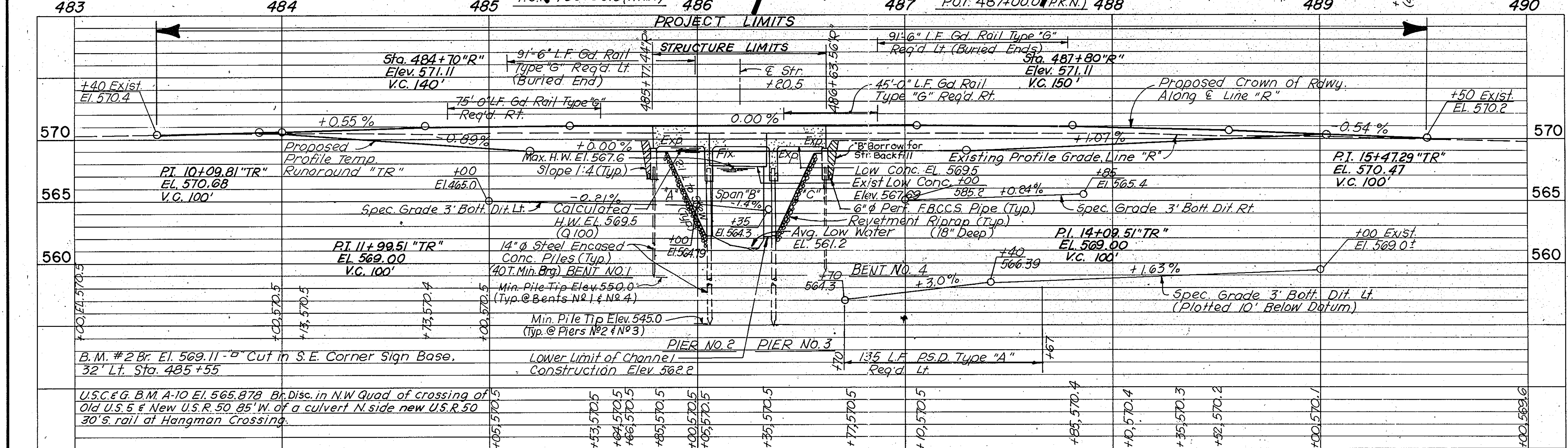
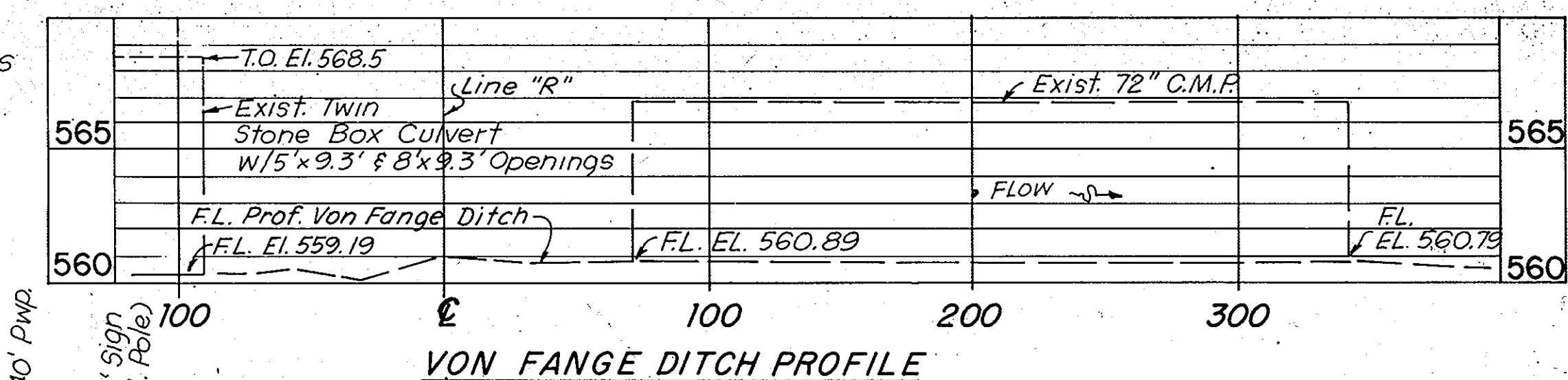
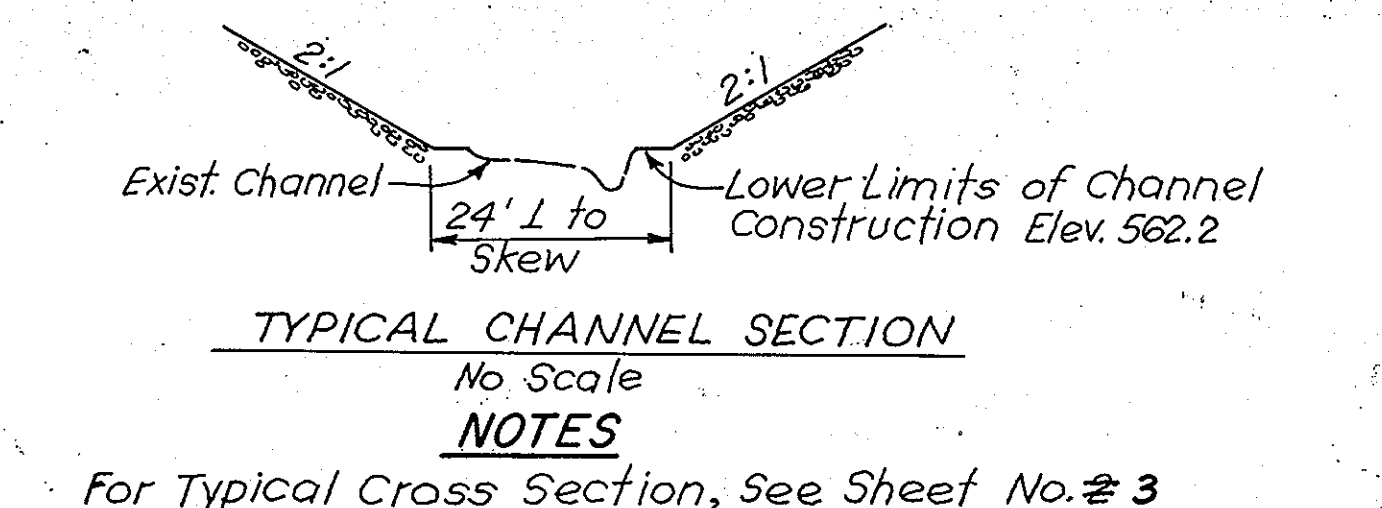
PROJECT NO.	LINE	SHEET NO.	TOTAL SHEETS	FILE
ST-X255(AR/W) 6TR		4	7	

CHANGED CENTERLINE BEARING TO N63°58'00" E
HEISTAND 2-15-84



PRESENT STRUCTURE
R.C. Girder 1 @ 28 Sk. 45° R with 24" O' C.I. Rdwy. width widened to 39'-8" with P.C.B's.

UTILITY OWNERS
Public Service Indiana
1000 East Main
Plainfield, Indiana 46168
Continental Telephone System
309 North Chestnut Street
Seymour, Indiana 47274
Indiana Gas Company
1630 N. Meridian Street
Indianapolis, Indiana 46202
Seymour Water Co.
114 S. Chestnut St. Seymour, Ind.
Sanitary Sewer Department
City Hall, 220 N. Chestnut
Seymour, Indiana 47274



DESIGN FLOOD DATA

DRAINAGE AREA	2.3 Sq. Mi.
MAGNITUDE	1700 Cfs.
VELOCITY	6.0 Ft./Sec.
FREQUENCY	100 Yr. Storm
AREA REQ'D. BELOW EL. 569.5	280 SQ. FT.
AREA PROVIDED	318 SQ. FT.
FREE BOARD	0 FT.

EARTHWORK TABULATION

- * Common Excavation..... 492 cys.
- * Fill + 25 %..... 1513 cys.
- Borrow..... 1021 cys.
- * Includes 157 Cys. For Benching

LAYOUT
CONTINUOUS REINFORCED CONCRETE SLAB BRIDGE
3-SPAN 26'-3" 31'-6" 26'-3" SKEW 45° O' RT.
ONE 44'-0" ROADWAY, 1'-3" COPINGS 46'-6" O-O COPINGS
OVER VON FANGE DITCH ON U.S. 50

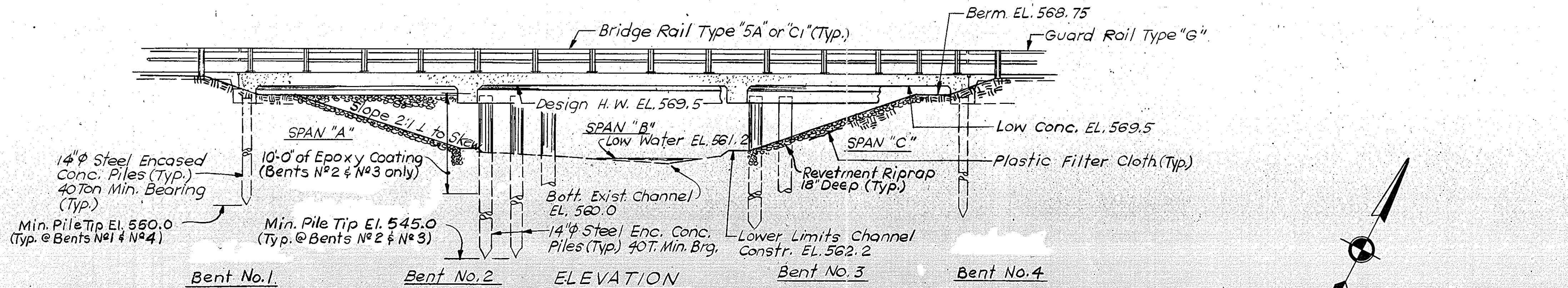
INDIANA DEPARTMENT OF HIGHWAYS
JACKSON COUNTY

SCALE:—AS NOTED DATE:— 1982

DRAWING: C/ OF C SHEET: 5 OF 7
PROJECT:— ST-X 255(A)R/W STATION:— 486+20.5
BRIDGE CONTRACT NO.
BRIDGE FILE:— 50-36-6788

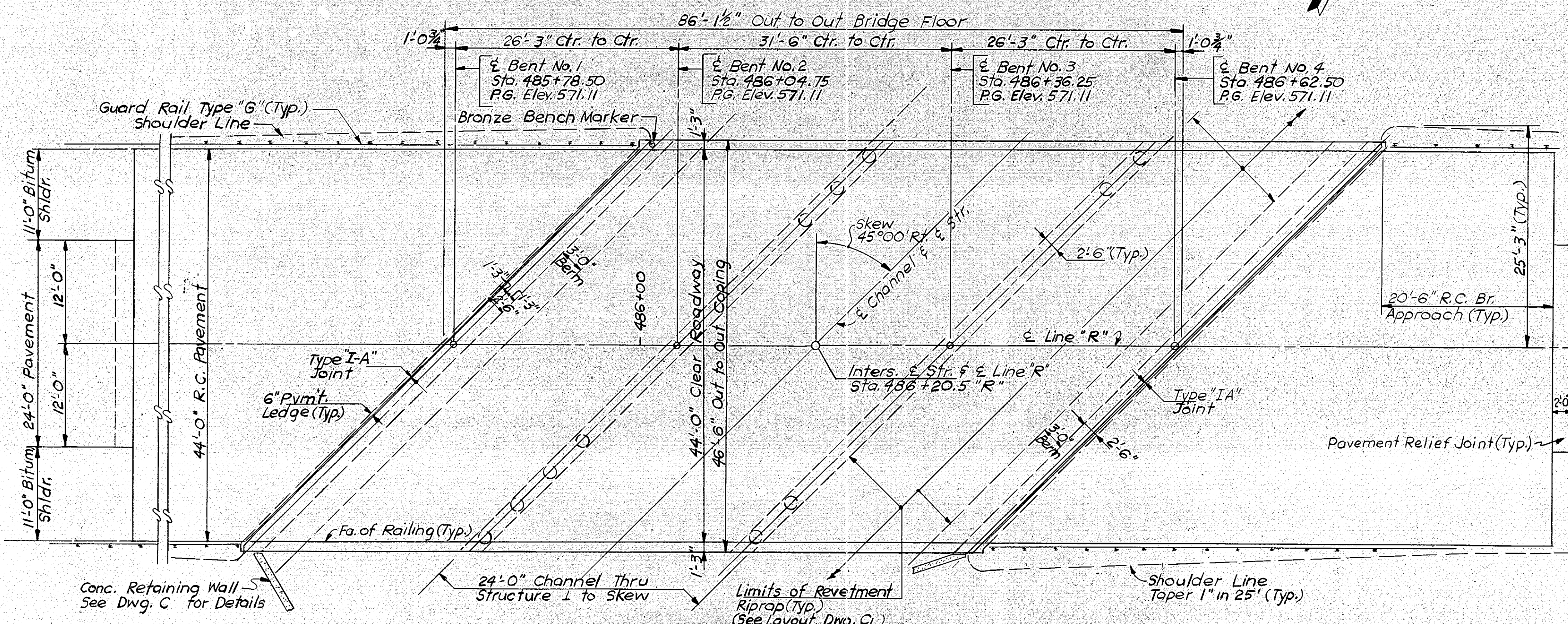
DRAWN V.E.L. C.K.D. M.L.K.
DESIGNED H.Y.P. C.K.D. J.G.C.
TRACED C.K.D.

STRUCTURE TO BE BUILT TO A 0.00% GRADE



DESIGN DATA
Designed for HS 20-44 loading in accordance with 1977 AASHTO Specifications and Interim Specifications.

TYPICAL CROSS SECTIONS
For Typical Roadway Section, See Sheet No. 2



GENERAL NOTES

- Existing Reinf. Conc. Girder Bridge at Proposed Bridge site to be removed.
- Piles shall be driven to elevation necessary to obtain minimum bearing value shown on detail drawings. Determine pile lengths by Art. 701 of the Specifications.
- For details of steel encased concrete piles, See Bridge Standard C1, Special Provisions and applicable articles in the Specifications.
- Reinforcing steel covering shall be 2 1/2" inches in top and 1" inch min. in bottom of floor slabs and 2" inches in all other parts, unless noted.
- Concrete in superstructure, to be Class "C".
- Concrete in Paved side ditches and Steel Encased concrete piles to be Class "A".
- Concrete in structure not noted above to be Class "A".
- Continuous concrete pours shall be required between construction joints as shown on detail plans.
- Tolerance in position of pile head maximum 2" inches.
- Bevel forms 1/4" under copings and chamfer exposed edges 1" inch unless noted.
- Construct Riprap at locations shown on Layout.
- Only the face of deck coping, top of the deck, and 7" of the underside of the bridge slab from coping to drip bead are to be surface sealed.
- Prestressed Concrete Piles may be used as Alternates.

STANDARD DRAWINGS

BRIDGE ROAD	PURPOSE
BR-1	Aluminum bridge railing
BR-2	Aluminum railing details
BR-3	Steel bridge railing
BR-4	Steel railing details
C-1	Reinf. bar notes bar bending details & Pile splices
C-3	Constr. Joint Details
S-1	Placing "B" Borrow
MA	R.C. Bridge Approach
ME-2	Pipe End Sections
MH 1	Private Drives
MH 2	Private and Commercial Drives
MP	Pipe Classifications
GR 4	Guard Rail Type "GA" or "GST"
GR 5	Aluminum Guard Rail Details
GR 6	Steel Tube Guard Rail Details
GR 10A	Guard Rail Breakaway Cable Terminal
GR 10	Guard Rail Buried Ends
CB 2	Temp. Concrete Barrier
MB	Paved Side Ditch 3' Bottom Ditch
Sheet 9	Traffic Sign Details
C4	Prestressed Concrete Piles

GENERAL PLAN

CONTINUOUS REINFORCED CONCRETE SLAB BRIDGE
3-SPAN 26'-3", 31'-6", 26'-3" SKREW 45°00' RT.
ONE 44'-0" ROADWAY, 1'-3" COPINGS 46'-6" 0-0 COPINGS
OVER VON FANGE DITCH ON U.S. 50

INDIANA DEPARTMENT OF HIGHWAYS

SCALE: AS NOTED DATE: 1982

DRAWING: C2 OF C SHEET: 6 OF 7
PROJECT: ST-X 255(A)/R/W
CONTRACT NO.
BRIDGE FILE: 50-36-6788

DESIGNED: H.Y.P. C.K.D. J.G.C.
DRAWN: M.L.K. C.K.D. J.G.C.
TRACED: C.K.D.

TYPICAL SECTION I TO E ROADWAY
Scale 1/4" = 1'-0"

