

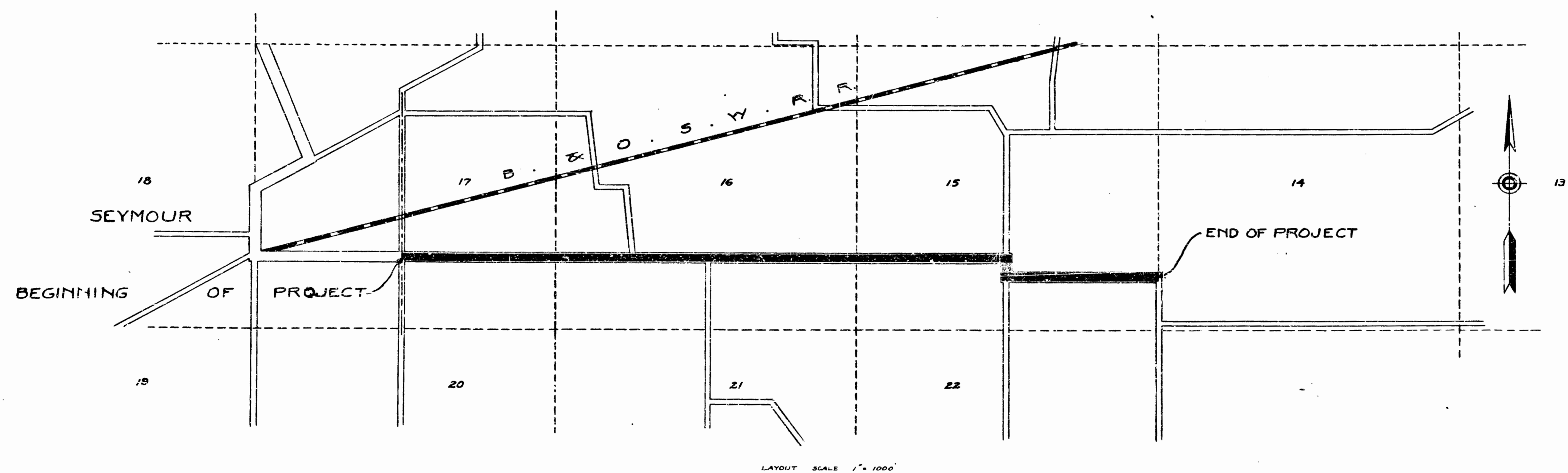
FEDERAL ROAD DISTRICT	STATE	FED. AID PROJECT NO.	FISCAL YEAR	SHEET NO.	TOTAL SHEETS
7	IND	12A	1919	1	19

INDEX

- SHEET NO. 1 MAP
- 2 STANDARD SECTIONS
 - 3-7 PLAN & PROFILE
 - 8 MISCELLANEOUS STANDARDS
 - 9 STANDARD PIPE CULVERT & SUMMARY OF QUANTITIES
 - 10 STANDARD BOX CULVERTS
 - 11 STANDARD SLAB CULVERS
 - 12-18 CROSS SECTIONS

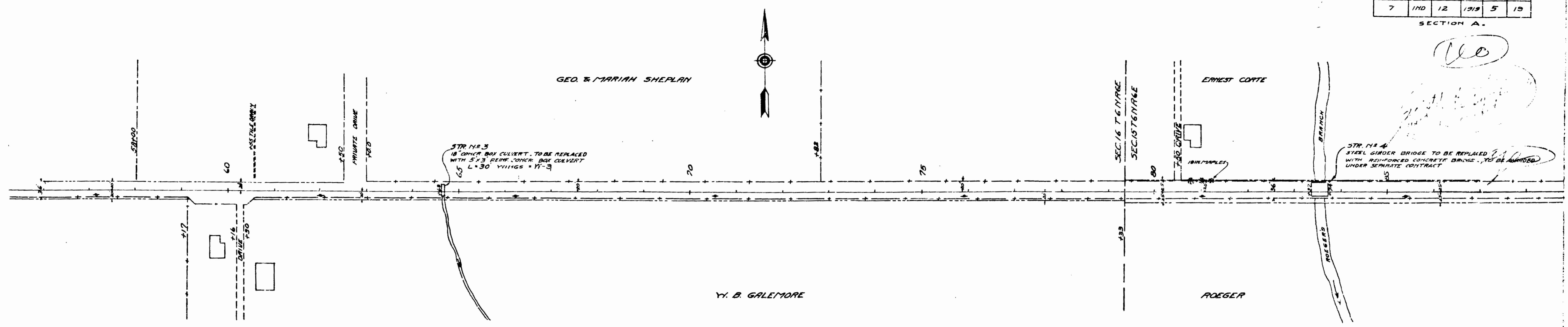
FEDERAL AID PROJECT NO. 12 SECTION "A"
 BEGINNING AT THE EAST CORPORATION LINE OF SEYMOUR
 IN JACKSON COUNTY AND RUNNING EAST TO THE WEST
 LINE OF SECTION 14 TWP 6 NORTH RANGE 6 EAST
 LENGTH 2.46 MI.

SCALES
 PLAN - 1" = 100'
 PROFILE HOR. - 1" = 100' VER. - 1" = 10'



FED. ROAD DIST. NO.	STATE	FED. AID PROJ. YEAR	FISCAL SHEET NO.	TOTAL SHEETS
7	IND	12	1318	5 19

SECTION A.



STR. NO. 3
18" CONCR. BOX CULVERT TO BE REPLACED
WITH 5'x3' REIN. CONCR. BOX CULVERT
L=30' VPI=65' +11'-3"

STR. NO. 4
STEEL GIRDER BRIDGE TO BE REPLACED
WITH REINFORCED CONCRETE BRIDGE TO BE AWARDED
UNDER SEPARATE CONTRACT

B.M. NO. 8 X IN N.E. COR. CONC. WALK UNDER GATE TO GALEMORES DAIRY FARM - ELE. 589.71
B.M. NO. 5 SPIKE IN 18IN. MAPLE TREE S.E. COR. FARM HO. LAWN W. OF BRIDGE ELE. 589.92

CUT 9.41
FILL +20% 86.5
WASTE 76

CUT 522
FILL +20% 530
BORROW 8

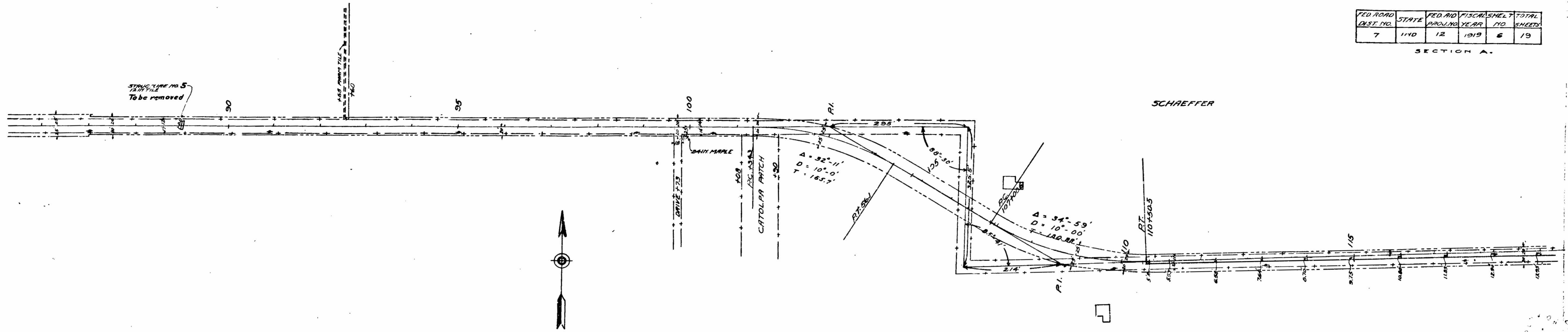
CUT 12.76
FILL +20% 12.20
WASTE 58



56 57 58 59 60 61 62 63 64 65 66 67 68 69 70 71 72 73 74 75 76 77 78 79 80 81 82 83 84 85 86 87 88

FED. ROAD DIST. NO.	STATE	FED. AID PROJ. NO.	FISCAL YEAR	SHEET NO.	TOTAL SHEETS
7	IND	12	1919	6	19

SECTION A.



NOTE: Center line to be shifted as shown.
 5' right at Sta. 110+50.5
 13' right at Sta. 120+00
 30' left at Sta. 133+26
 Change radius of curve 107+00.6 - 110+50.5
 to conform with reestablished center line

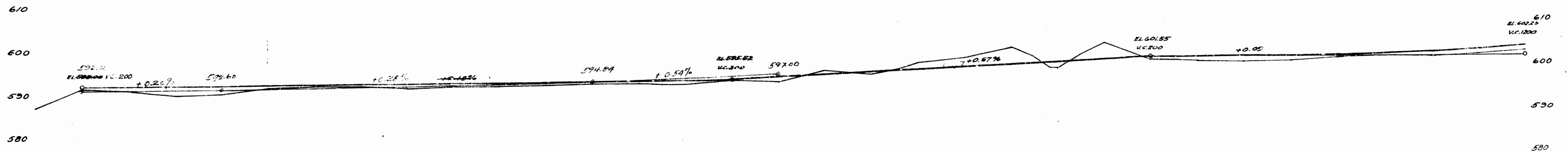
BENCH MARKS

B.M. NO. 10 ELE. 592.20 SPIKE IN TEL. POLE RIGHT OF STR. 90+00
 B.M. NO. 11 ELE. 595.51 SPIKE IN 181X MAPLE S. SIDE OF ROAD STR. 100+00

CUT 874
 FILL+20% 814
 WASTE 60

CUT 1601
 FILL+20% 47
 WASTE 1559

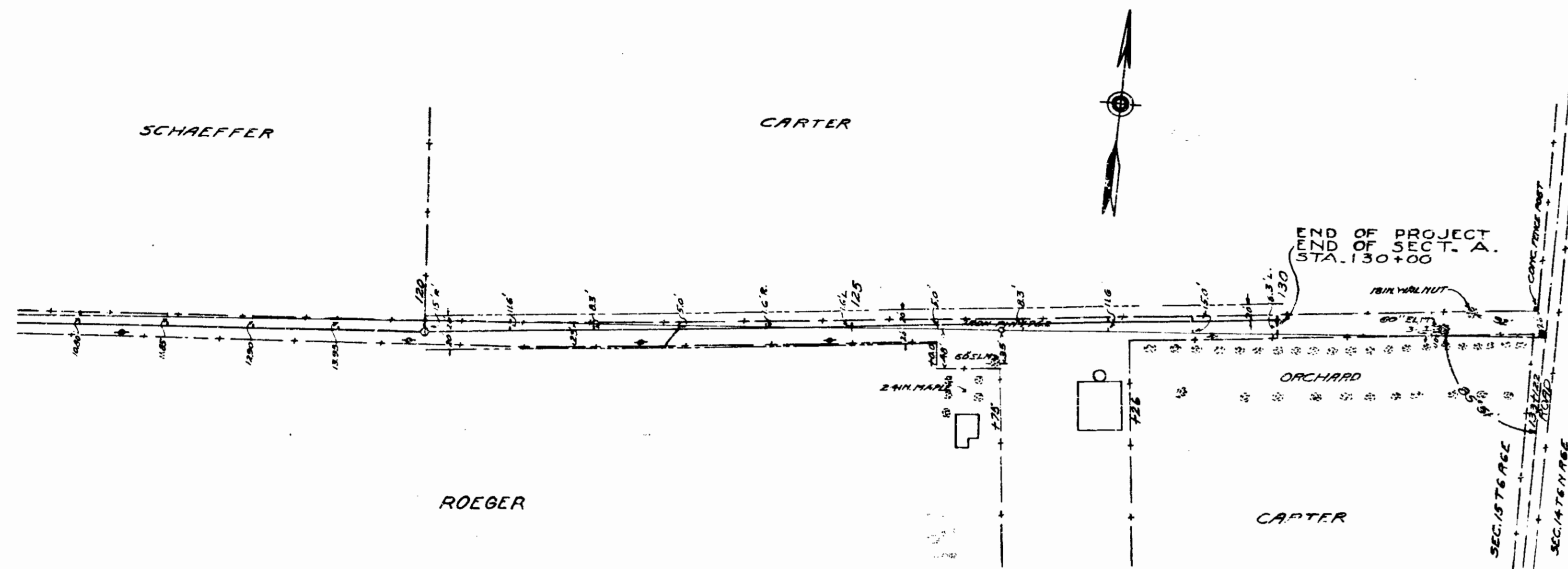
CUT 992
 FILL+20% 863
 WASTE 29



86 87 88 89 90 91 92 93 94 95 96 97 98 99 100 101 102 103 104 105 106 107 108 109 110 111 112 113 114 115 116 117 118

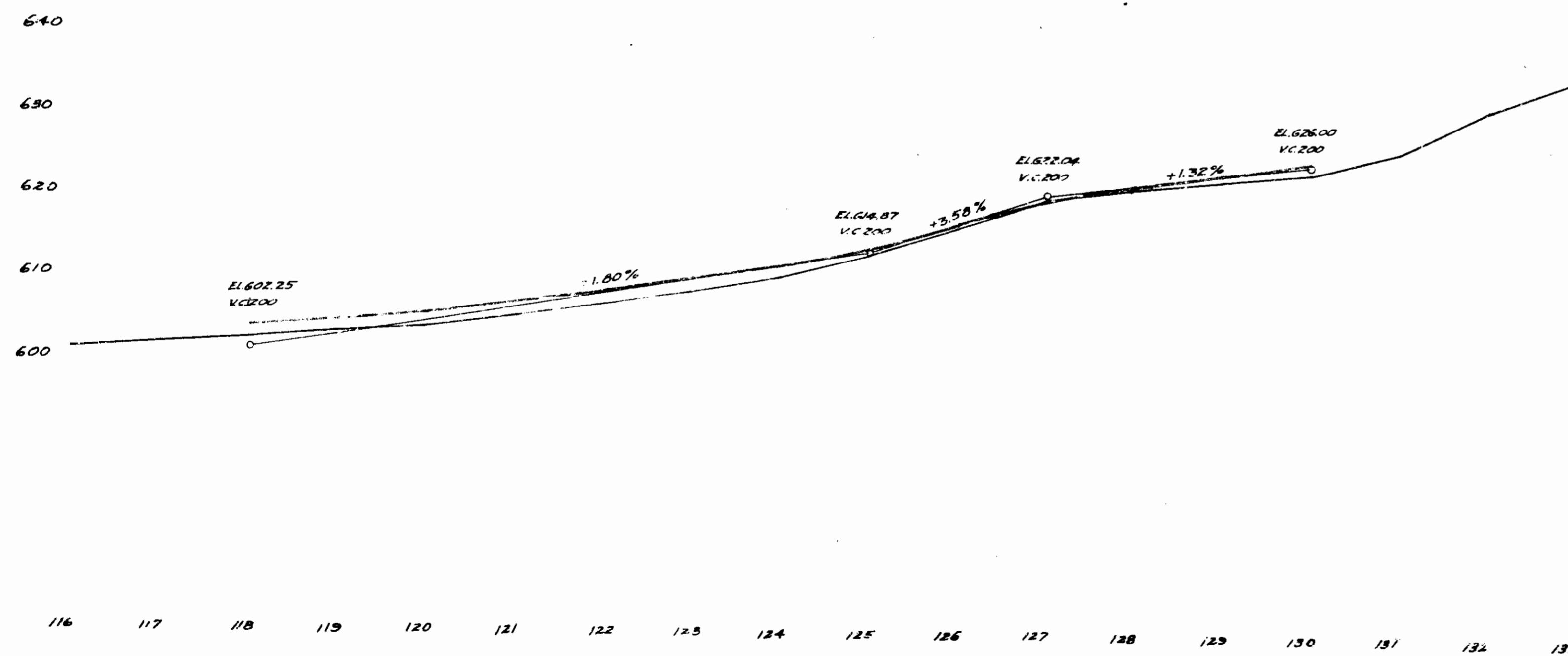
FEDERAL ROAD DIST. NO.	STATE	FED. AID PROGRAM	FISCAL YEAR	SHEET NO.	TOTAL SHEETS
7	IND	12	1919	7	19

SECTION A.



BENCH MARKS
B.M. NO. 12 ELE 824.58 SPIKE IN 30/1X ELM 30. STA 126+75

CUT 550
FILL+20% 455
WASTE 95



116 117 118 119 120 121 122 123 124 125 126 127 128 129 130 131 132 133

FEDERAL DISTRICT	CONTRACT NO.	STATE	FED. AID PROJ. NO.	FISCAL YEAR	SHEET NO.	TOTAL SHEETS
7		IND	12	1919	9	19

ESTIMATE OF PIPES AND CULVERTS								
STATION NO.	"D"	DESCRIPTION KIND	LOCATION STATION	LENGTH "L"	CUBIC YARDS CONCRETE	FLOW LINE		REMARKS
						UPSTREAM	DOWN	
1	24"	Pipe	34+80	24'	7.1	-	-	Cross Road
2	10'	Slab	42+35	24' 00"				See Sheet No. 11 A - 5'-6" 30" WY
3	5' x 3'	Reinforced Concrete Box Culvert	64+70	30'	19.3	584.0	583.9	See Sheet No. 10 USE HEADWALLS Y13
4	40'	Reinforced Concrete Girder Span			47.2			To be built under separate contract

Note - Contractor will be permitted to use pipe culverts, reinforced concrete pipe, corrugated iron pipe, or vitrified pipe incased in concrete.

SUMMARY OF QUANTITIES													
EXCAVATION		PAVEMENTS				PIPE CULVERTS		REINFORCED CONCRETE CULVERTS			HEADWALLS	GUARD RAIL	MONUMENTS
BRICK	CONCRETE AND BITUMINOUS	BRICK AND BITUMINOUS BASE	BRICK AND CONCRETE	BITUMINOUS	NEW PIPE REQUIRED	REINFORCED CONCRETE	CLASS 'A' CONCRETE	CLASS 'B' CONCRETE	POUNDS REINFORCING STEEL	CU YDS CLASS 'A' CONCRETE	LINEAR FEET	NUMBER	
10,460	3,730	26,213	26,213	24,769	Pipe 24" 24"	33.2	33.3	3395	71			2	

D STR