

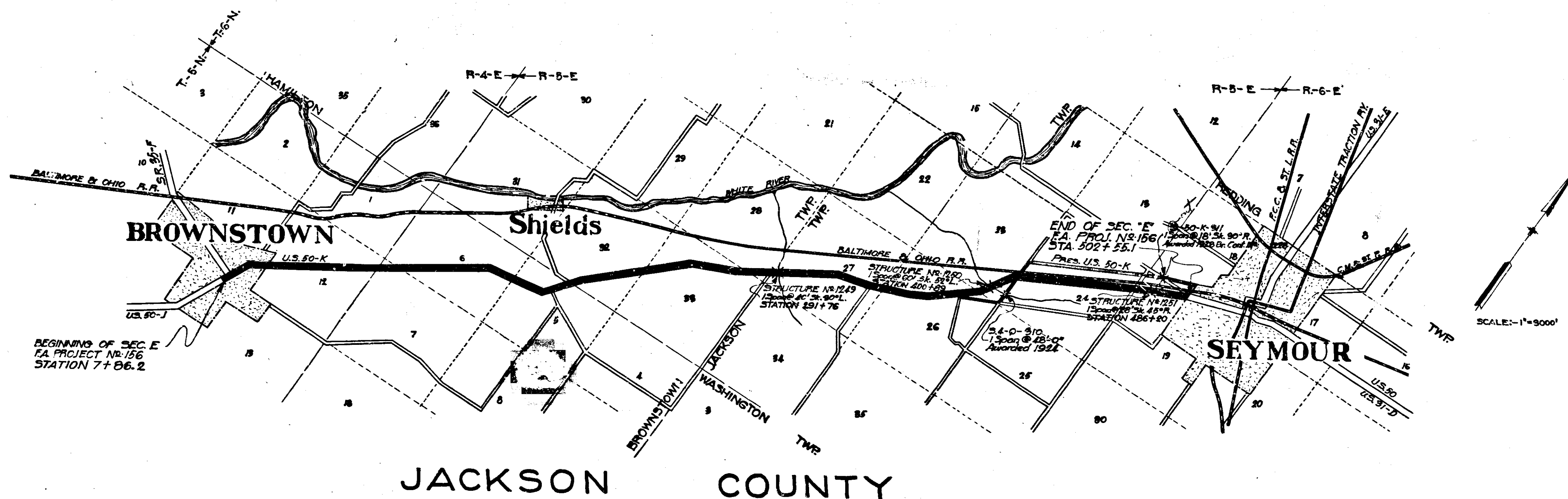
SHEET NUMBER	SECTION	STRUCTURE					SUBJECT	BRIDGE CONTRACT NO.
		NO.	TYPE	SPAN	OVER	STATION		
1							Index and Title Sheet	517
2		K 1249	R.C. Arch	140'-5 1/2"x30"	Dear Creek	291+76	Layout	
3							General Plan	
4							Plan, Elevations & Sections	
5							Flg. Plan, Misc. Details, Bending Diagram & Bill of Materials	
6							Road Plan & Profile - Rd. Proj. FA 156-E	
7		K 1251	R.C. Girder	1078'-5 1/2"x21"	Van Fangehish	486+20	Layout	
8							General Plan	
9							Skd. 210 Sld. Substructure Details	
10							Skd. 25 Sld. Superstructure Details	
11							Road Plan & Profile - Rd. Proj. FA 156-E	
12		K 1250	Steel Pl. Girder	1460'-5 1/2"x21"	Heady Run Ditch	400+89	Layout	
13							General Plan	
14							Substructure Details	
15							Subst. Details, Bend. Diag. & Bill of Materials	
16							Superst. Details - Floor Plan, Sects. Bend. Diag. & Bill of Materials	
17							Girder Details	
18							Flow Beam Struts & Bill of Materials	
19							Road Plan & Profile - Rd. Proj. FA 156-E	
20							Skd. A-B Paving Section	
21							Misc. Rd. Side - Sheets A & B	
22							Skd. Detour, Barricades, Etc.	
23								
24								

STATE OF INDIANA  
 STATE HIGHWAY COMMISSION

PLANS FOR BRIDGES OF SPANS OVER 20 FEET  
 FOR PROPOSED

STATE HIGHWAY  
 PROJECT NO. 50 SECTION K

DESCRIPTION OF FEDERAL AID PROJECT NO. 156: BEDFORD-SEYMOUR ROAD TO BE CONSTRUCTED BY THE ROAD DEPARTMENT. GROSS LENGTH: 9.969 MI. MAXIMUM GRADE 6.878%. SECTION "E" BEGINNING AT THE NORTH END OF THE CONCRETE PAVEMENT ON MAIN ST. IN BROWNSTOWN AND RUNNING NORTH EAST TO THE WEST CORNER OF SEYMOUR IN JACKSON COUNTY.



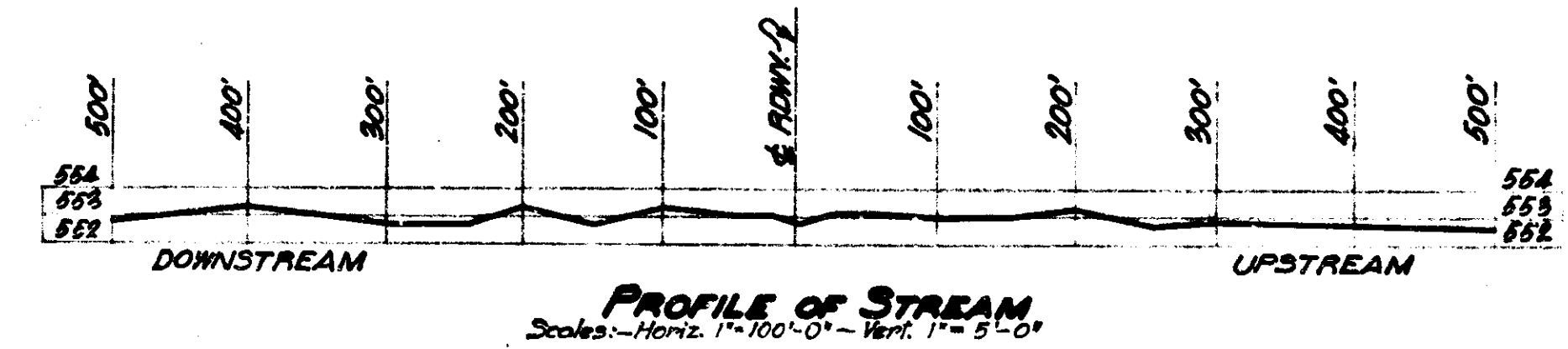
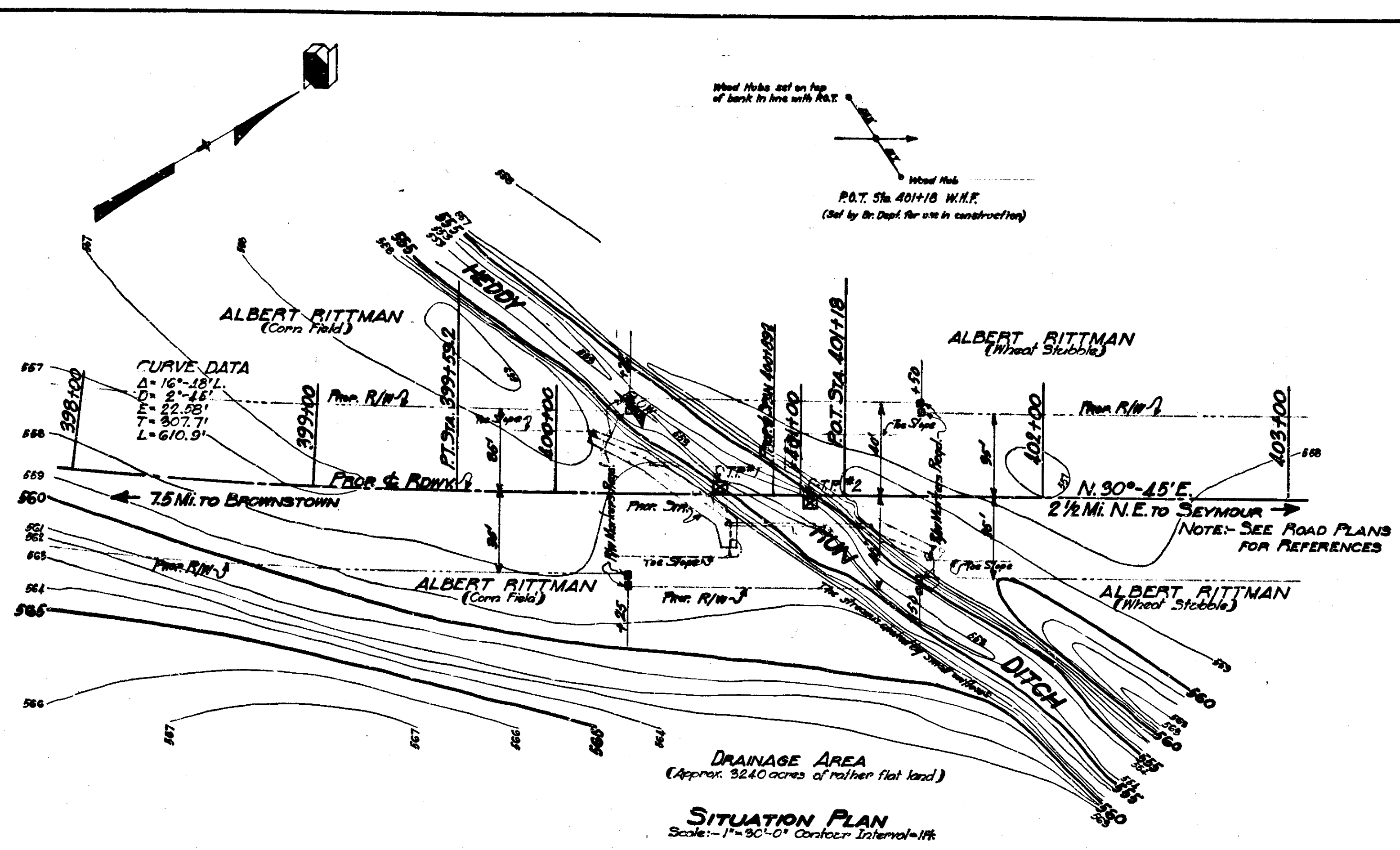
INDIANA STATE HIGHWAY STANDARD  
 BRIDGE SPECIFICATIONS, 1925 TO BE  
 USED WITH THESE PLANS.

APPROVED MAY 31, 1932

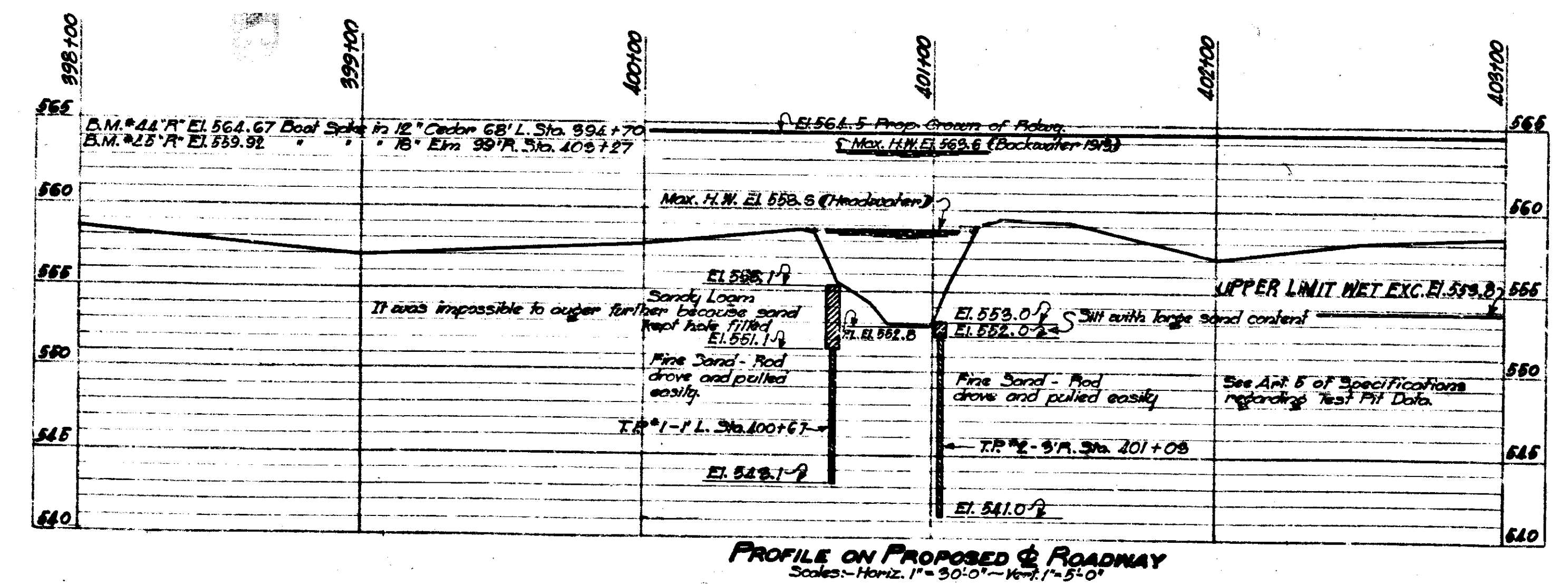
*[Signature]*  
 APPROVED MAY 31, 1932  
*[Signature]*  
 CHIEF ENGINEER, INDIANA STATE HIGHWAY COMMISSION

BRIDGES OVER 20' SPAN					
STATE	PROJ. NO.	SECTION	DATE	SCALE	NO.
IND.	50	1952	12	24	

SECTION-K



NOTE:- THIS IS STRUCTURE NO. 2 ON ROAD PROJ. FA. 156-E SEE SHEET NO. 16 OF ROAD DEPT. PLANS FOR GRADE LINE, BENCH MARKS AND REFERENCES.

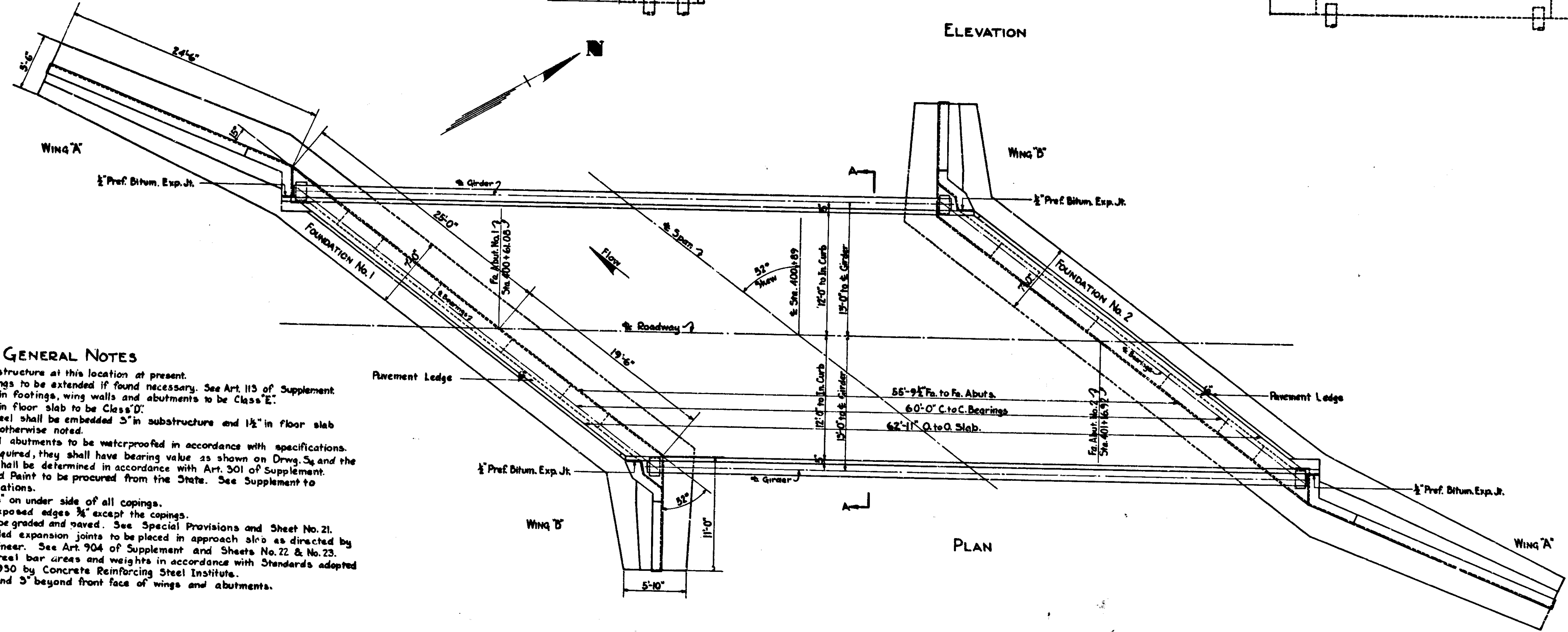
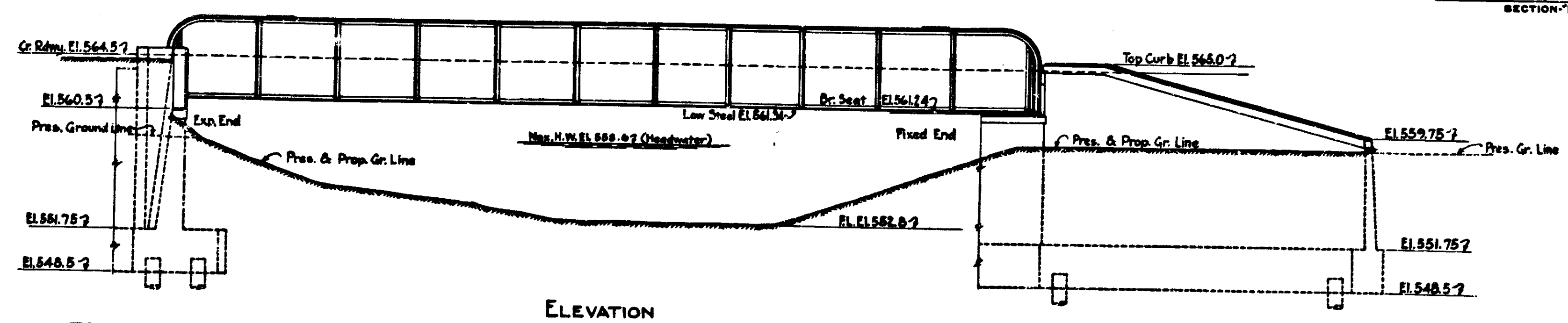
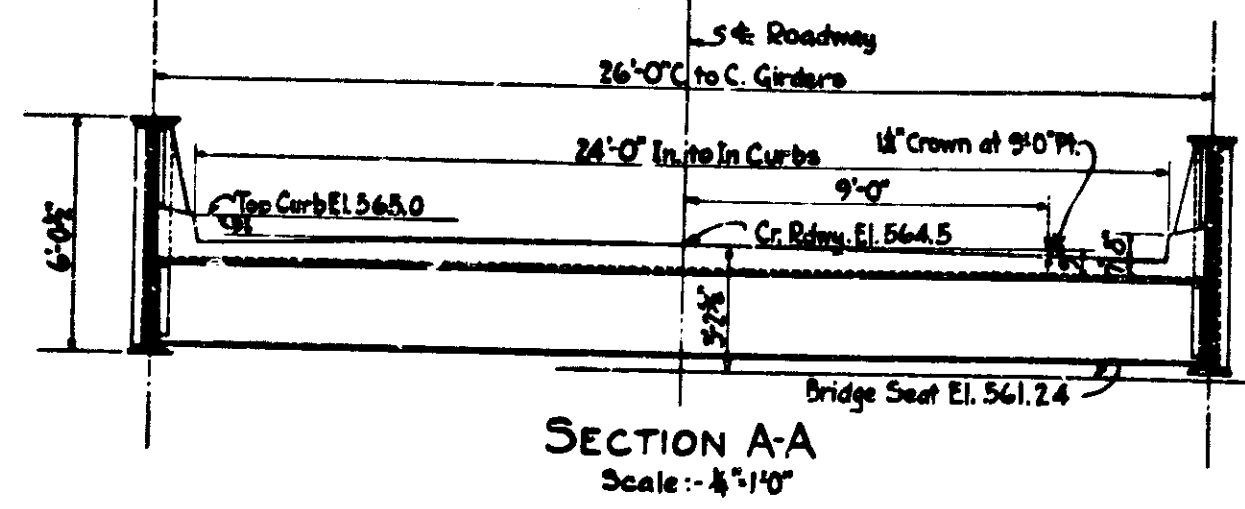


LAYOUT  
**STEEL GIRDER BRIDGE**  
 1 SPAN @ 60'-0" SKEW 52° L. 24'-0" ROADWAY  
 OVER HEDDY RUN DITCH ON STATE ROAD-50-K  
**INDIANA STATE HIGHWAY COMMISSION**  
**JACKSON COUNTY**  
 SCALE:- AS NOTED MAY 28, 1952  
 RECOMMENDED FOR APPROVAL: *Fred Kellam*  
 PROJECT:- 50 SECTION:- K STATION:- 400+89  
 DRAWING:- 3 OF 8 STRUCTURE NO. 518

FIELD NOTES:- Book Br. #429 PP 94-51

REVISIONS  
 DATE 11-15-52 BY S.C. 11-15-52  
 TRACK 1-15-52 CHS. 1.4-11-32

BRIDGES OVER 20' SPAN					
YEAR	STATE	PROJ. NO.	SHEET NO.	TOTAL SHEETS	DATE
7	IND.	50	1932	13	24



**GENERAL NOTES**

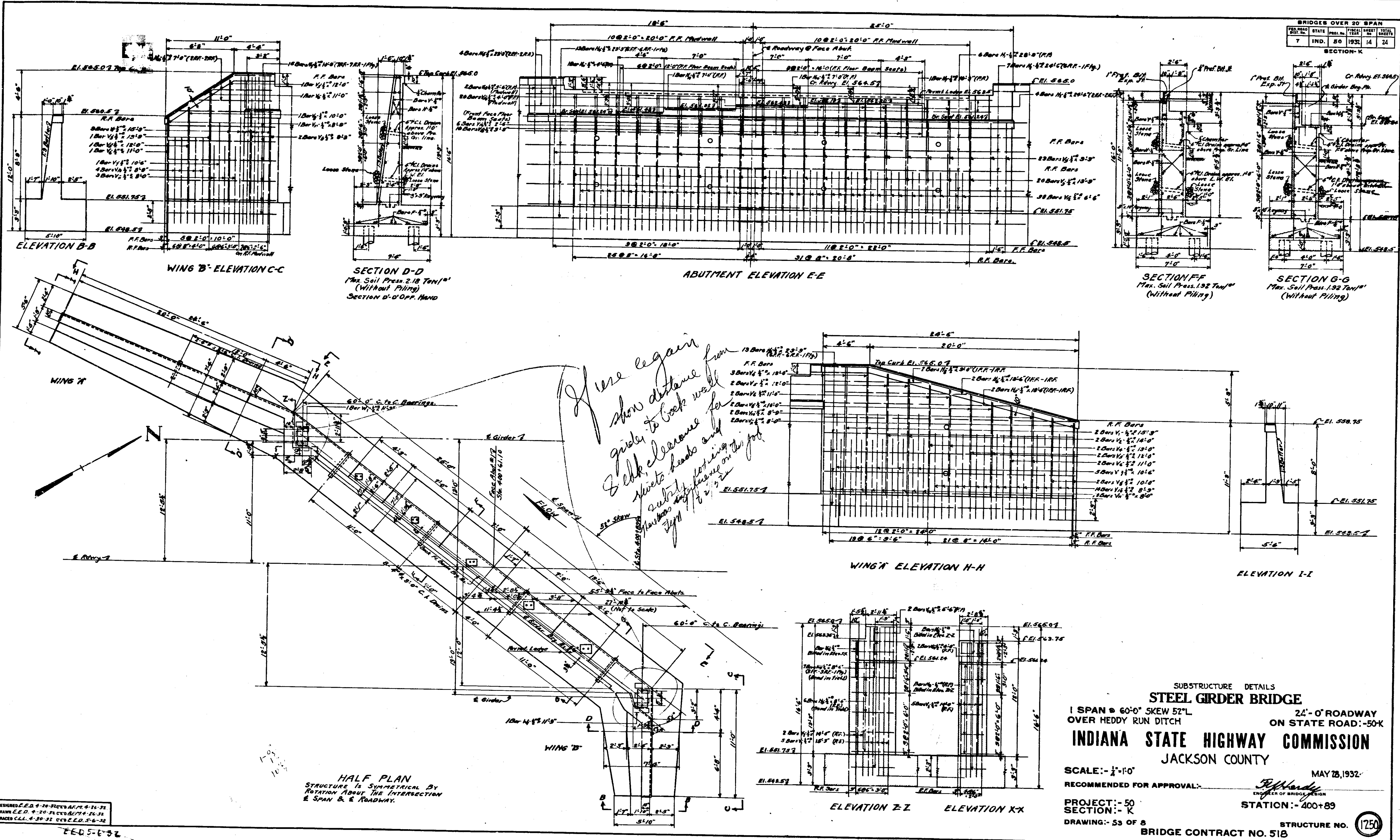
There is no structure at this location at present.  
 Depth of footings to be extended if found necessary. See Art. 115 of Supplement.  
 All concrete in footings, wing walls and abutments to be Class "E".  
 All concrete in floor slab to be Class "D".  
 Reinforcing steel shall be embedded 3" in substructure and 1 1/2" in floor slab unless otherwise noted.  
 Wing walls and abutments to be waterproofed in accordance with specifications.  
 If piles are required, they shall have bearing value as shown on Drwg. S<sub>4</sub> and the length shall be determined in accordance with Art. 301 of Supplement.  
 Shop and Field Paint to be procured from the State. See Supplement to Specifications.  
 Devel forms 1/4" on under side of all copings.  
 Chamfer all exposed edges 3/8" except the copings.  
 Approaches to be graded and paved. See Special Provisions and Sheet No. 21.  
 Bituminous filled expansion joints to be placed in approach slabs as directed by the Engineer. See Art. 904 of Supplement and Sheets No. 22 & No. 23.  
 Reinforcing Steel bar areas and weights in accordance with Standards adopted April 1, 1930 by Concrete Reinforcing Steel Institute.  
 Drains to extend 3" beyond front face of wings and abutments.

STR A-8 ROADWAY SECTION  
 See Sheet No. 21

GENERAL PLAN  
**STEEL GIRDER BRIDGE**  
 1 SPAN @ 60'-0" SKEW 52° L. 24'-0" ROADWAY  
 OVER HEDDY RUN DITCH ON STATE ROAD - 50-K  
**INDIANA STATE HIGHWAY COMMISSION**  
 JACKSON COUNTY  
 SCALE: - 1/8"=1'-0" EXCEPT AS NOTED MAY 28, 1932  
 RECOMMENDED FOR APPROVAL: *Fred Kellam*  
 PROJECT: - 50 SECTION: - K STATION: - 400+89  
 DRAWING: - 5 OF 8 STRUCTURE NO. 1250  
 BRIDGE CONTRACT NO. 518

DESIGNED BY	C.V.S.
DRAWN BY	M.S.J. & A.S.
CHECKED BY	C.V.S.
DATE	5-20-32

BRIDGE OVER 20 SPAN			
PROJ. NO.	STATE	YEAR	SHEET NO.
7	IND.	30	14
			TOTAL SHEETS 24

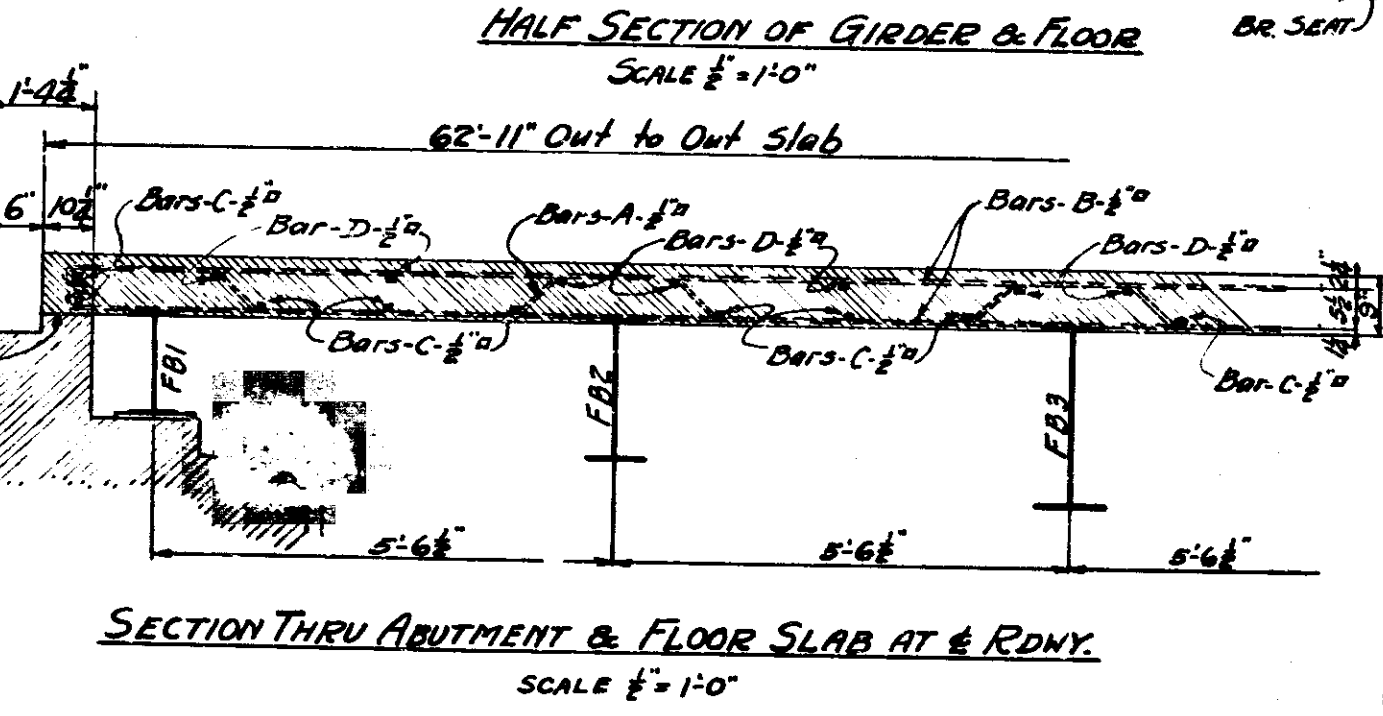
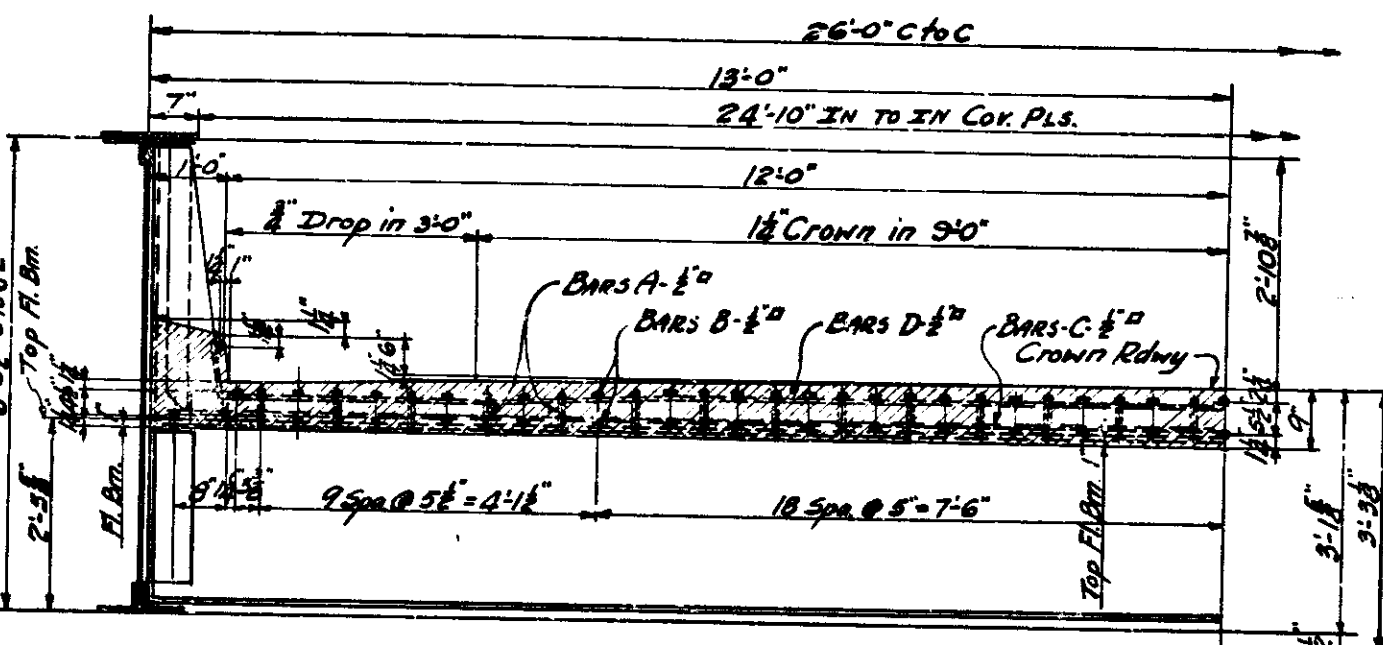
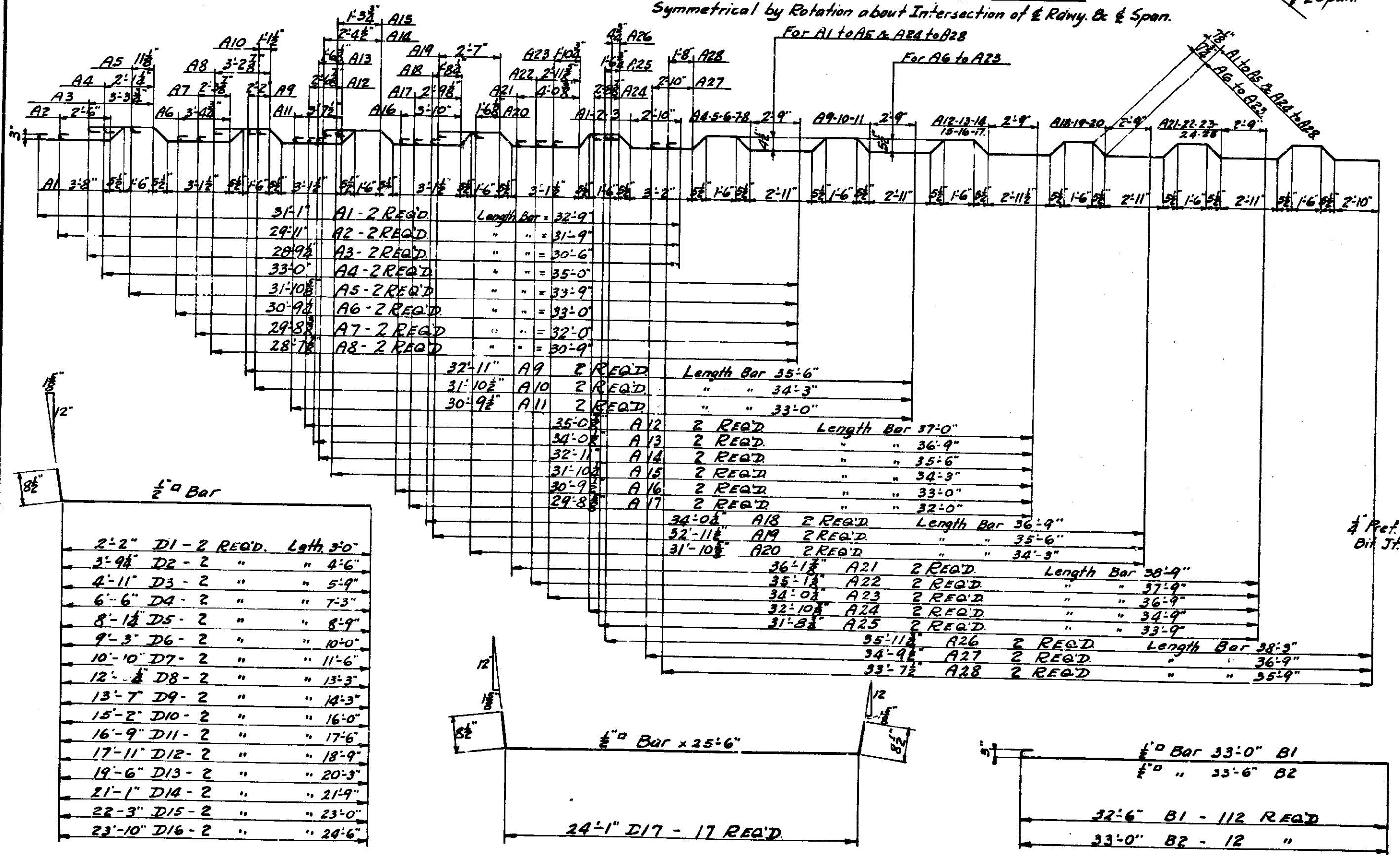
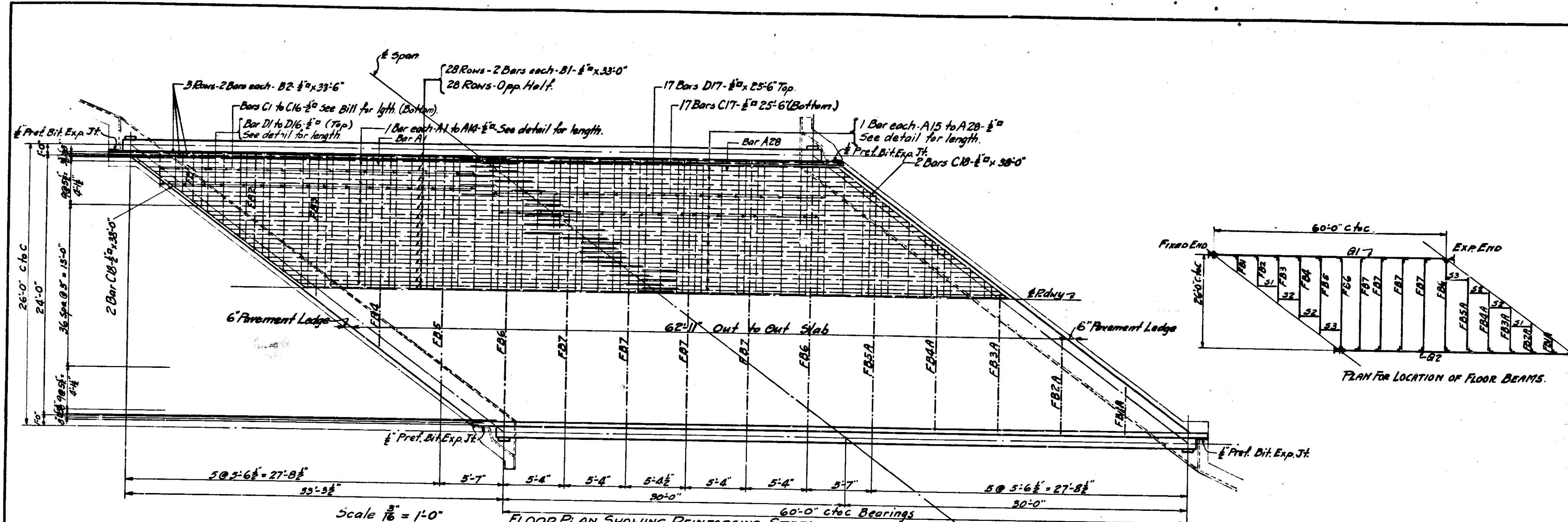


SUBSTRUCTURE DETAILS  
**STEEL GIRDER BRIDGE**  
 1 SPAN @ 60'-0" SKEW 52° L  
 OVER HEDDY RUN DITCH  
 24'-0" ROADWAY  
 ON STATE ROAD - 50K  
**INDIANA STATE HIGHWAY COMMISSION**  
 JACKSON COUNTY  
 SCALE: - 1" = 1'-0"  
 RECOMMENDED FOR APPROVAL: *R. Hardy* MAY 28, 1932  
 PROJECT: - 50  
 SECTION: - K  
 DRAWING: - 53 OF 5  
 STATION: - 400+89  
 STRUCTURE NO. (1750)  
 BRIDGE CONTRACT NO. 518

DESIGNED C.E.D. 4-28-32  
 DRAWN C.E.D. 4-28-32  
 CHECKED C.E.D. 4-28-32

HALF PLAN  
 STRUCTURE IS SYMMETRICAL BY  
 POSITION ABOUT THE INTERSECTION  
 OF SPAN & ROADWAY.

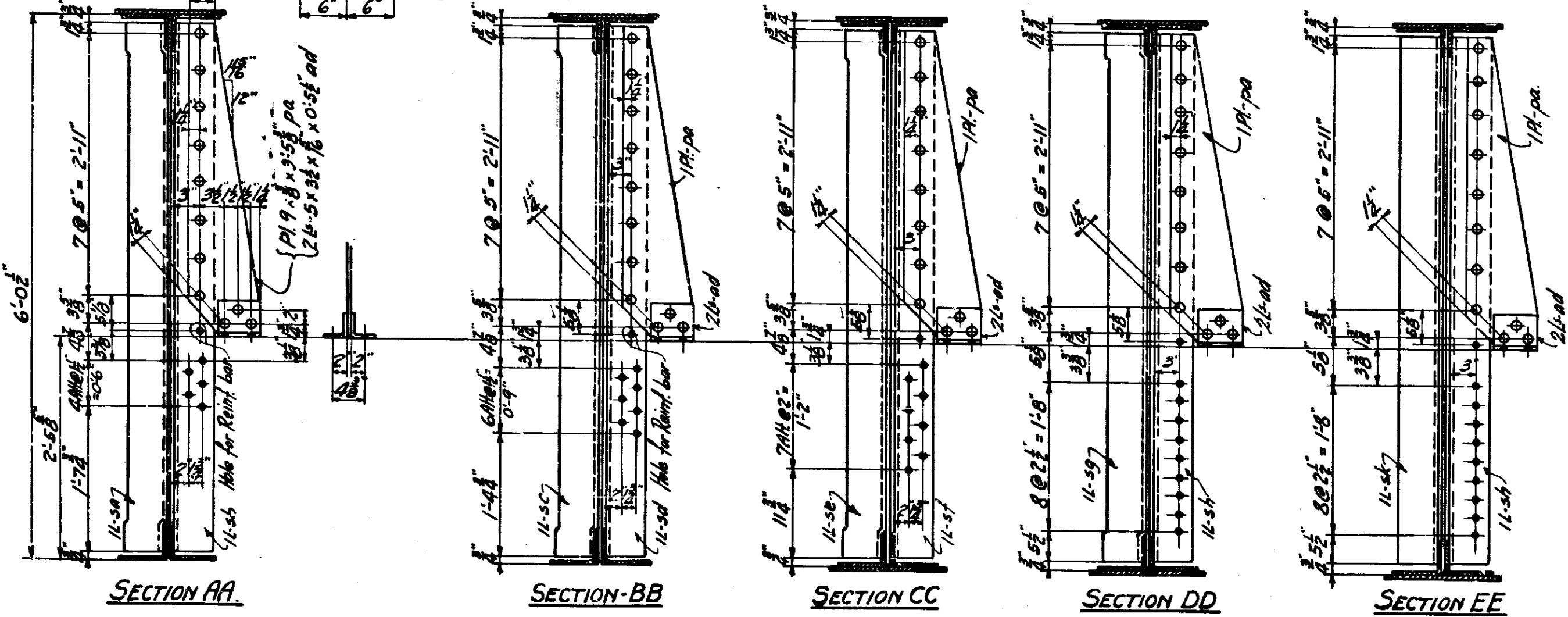
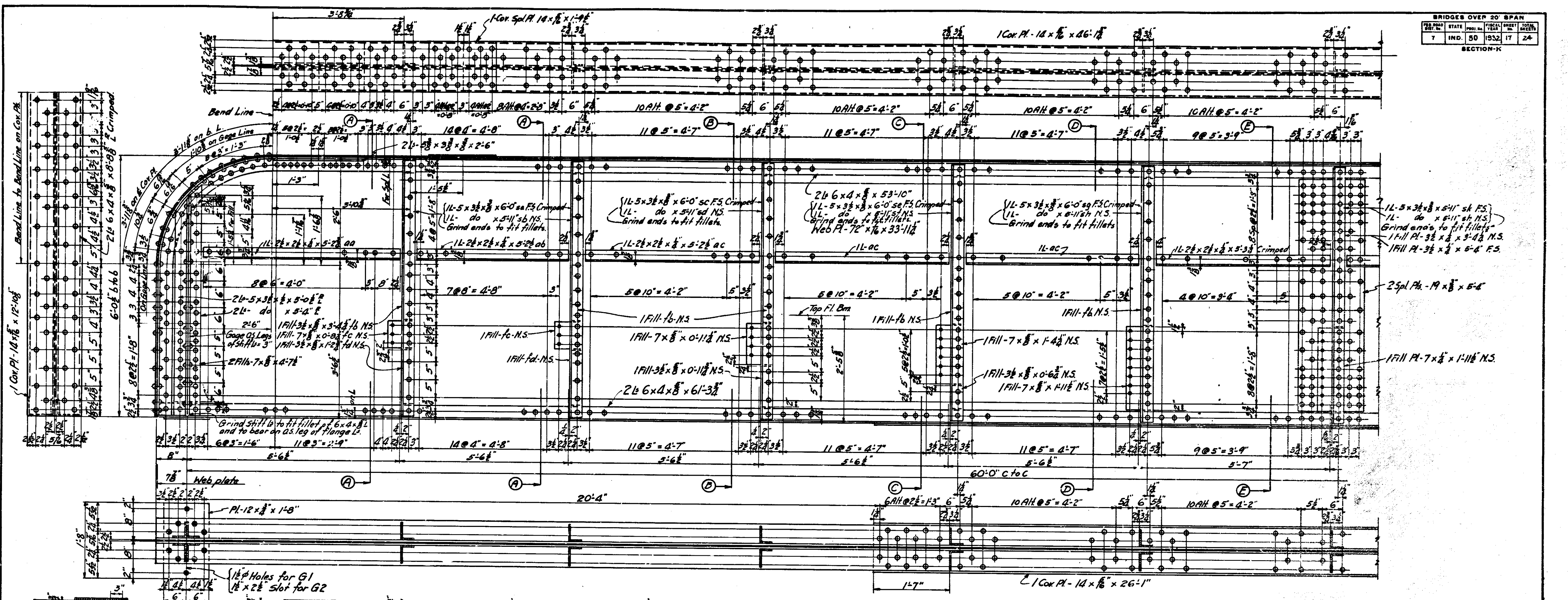




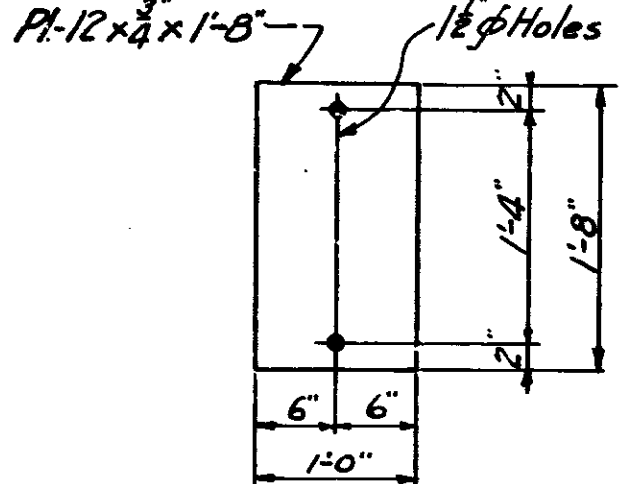
Bar No.	Length	Quantity	Location	Total Length	Weight
A1	32'-9"	2	Longitudinal in Slab	65'-6"	83'-6"
A2	31'-9"	2	"	63'-6"	81'-0"
A3	30'-6"	2	"	61'-0"	77'-0"
A4	33'-9"	2	"	67'-6"	85'-6"
A5	33'-0"	2	"	66'-0"	84'-0"
A6	33'-9"	2	"	67'-6"	85'-6"
A7	32'-0"	2	"	64'-0"	81'-0"
A8	30'-9"	2	"	61'-6"	77'-0"
A9	32'-9"	2	"	65'-6"	83'-6"
A10	31'-9"	2	"	63'-6"	81'-0"
A11	30'-0"	2	"	60'-0"	76'-0"
A12	35'-0"	2	"	70'-0"	88'-0"
A13	34'-9"	2	"	69'-6"	87'-6"
A14	32'-9"	2	"	65'-6"	83'-6"
A15	31'-9"	2	"	63'-6"	81'-0"
A16	33'-0"	2	"	66'-0"	84'-0"
A17	32'-0"	2	"	64'-0"	81'-0"
A18	30'-9"	2	"	61'-6"	77'-0"
A19	32'-9"	2	"	65'-6"	83'-6"
A20	31'-9"	2	"	63'-6"	81'-0"
A21	36'-11"	2	"	73'-6"	92'-6"
A22	35'-11"	2	"	71'-6"	89'-6"
A23	34'-0"	2	"	68'-0"	86'-0"
A24	32'-10"	2	"	65'-0"	82'-0"
A25	31'-8"	2	"	63'-0"	79'-6"
A26	35'-11"	2	"	71'-6"	89'-6"
A27	34'-9"	2	"	69'-6"	87'-6"
A28	33'-7"	2	"	67'-0"	84'-0"
B1	33'-0"	112	Longitudinal in Curb	3696'-0"	4687'-0"
B2	33'-0"	12	"	396'-0"	495'-0"
C1	3'-0"	2	Transverse in Slab (Bottom)	6'-0"	7'-6"
C2	4'-0"	2	"	8'-0"	10'-0"
C3	6'-0"	2	"	12'-0"	15'-0"
C4	7'-5"	2	"	15'-0"	18'-6"
C5	8'-6"	2	"	17'-0"	21'-0"
C6	10'-6"	2	"	21'-0"	26'-0"
C7	11'-6"	2	"	23'-0"	28'-6"
C8	12'-9"	2	"	25'-6"	32'-0"
C9	14'-9"	2	"	29'-6"	37'-0"
C10	16'-0"	2	"	32'-0"	40'-0"
C11	17'-3"	2	"	34'-6"	43'-0"
C12	19'-0"	2	"	38'-0"	48'-0"
C13	20'-3"	2	"	40'-6"	51'-0"
C14	21'-6"	2	"	43'-0"	54'-0"
C15	23'-6"	2	"	47'-0"	59'-0"
C16	24'-6"	2	"	49'-0"	62'-0"
C17	25'-6"	2	"	51'-0"	65'-0"
C18	30'-0"	4	Diagonal in End of Slab	120'-0"	150'-0"
D1	2'-0"	2	Transverse in Slab (Top)	4'-0"	5'-0"
D2	2'-6"	2	"	5'-0"	6'-0"
D3	3'-9"	2	"	7'-6"	9'-0"
D4	5'-9"	2	"	11'-6"	14'-6"
D5	7'-3"	2	"	14'-6"	18'-0"
D6	9'-9"	2	"	19'-6"	24'-6"
D7	10'-6"	2	"	21'-0"	26'-0"
D8	13'-3"	2	"	26'-6"	33'-0"
D9	15'-0"	2	"	30'-0"	37'-0"
D10	16'-0"	2	"	32'-0"	40'-0"
D11	17'-6"	2	"	35'-0"	43'-6"
D12	18'-9"	2	"	37'-6"	47'-0"
D13	20'-3"	2	"	40'-6"	51'-0"
D14	21'-9"	2	"	43'-6"	54'-0"
D15	23'-0"	2	"	46'-0"	58'-0"
D16	24'-6"	2	"	49'-0"	62'-0"
D17	25'-6"	2	"	51'-0"	65'-0"
D18	33'-6"	2	"	67'-0"	84'-0"
D19	33'-6"	2	"	67'-0"	84'-0"
D20	8'-0"	3	Splice Bars	24'-0"	30'-0"
Class D CONCRETE				45 Cu. Yds.	

FLOOR PLAN, SECTS, BEND DIAGS. & BILL OF MATERIALS  
**STEEL GIRDER BRIDGE**  
 1 SPAN 60'-0" SKEW 52° L. 24'-0" ROADWAY  
 OVER HEDDY RUN DITCH ON STATE ROAD - 50K  
**INDIANA STATE HIGHWAY COMMISSION**  
**JACKSON COUNTY**  
 SCALE: - AS NOTED. MAY 28, 1932.  
 RECOMMENDED FOR APPROVAL: *J. Hardy*  
 PROJECT: - 50 SECTION: - 8 STRUCTURE NO. 1250  
 DRAWING: - 55 OF 8 BRIDGE CONTRACT NO. 518

DESIGNED J.K. 3-23-32 CH'NGO. 4-2-32  
 DRAWN A.M. 4-26-32 CHECKED J.K. 4-28-32  
 TRACED M.C. 5-25-32 CIV. J.S.K. 5-26-32



MAKE-ONE-GIRDER AS SHOWN - MARK G1  
 MAKE-ONE-GIRDER AS SHOWN & NOTED - MARK G2



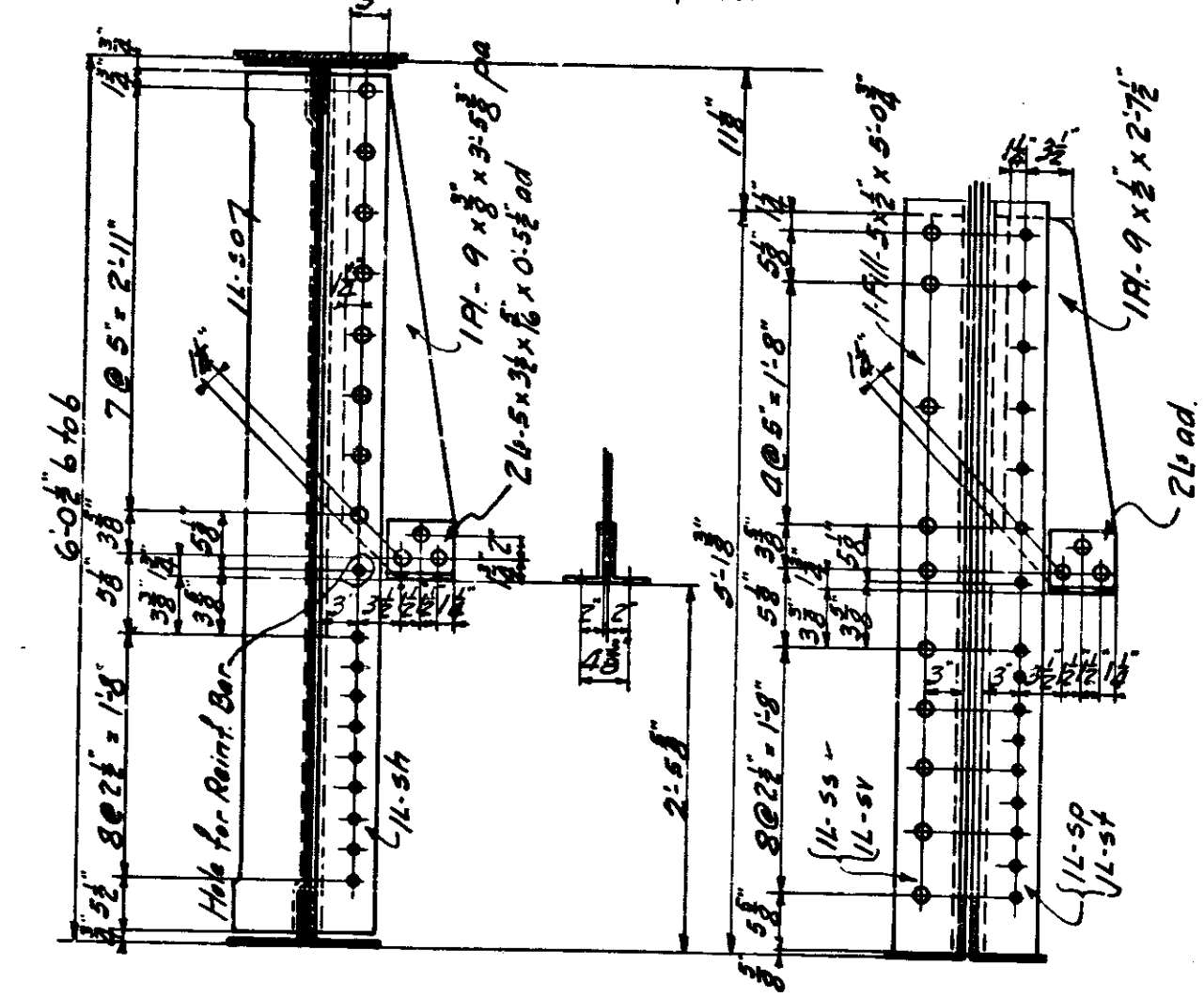
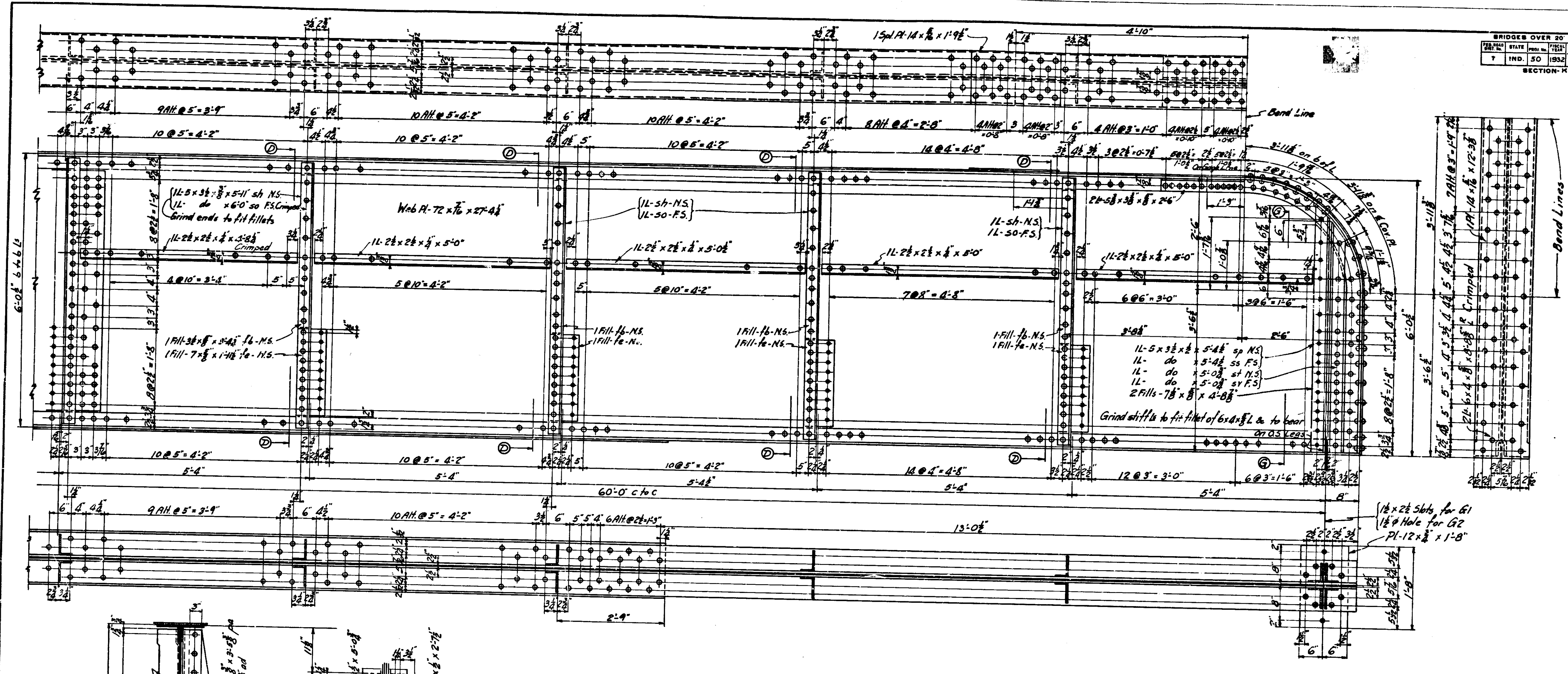
MAKE-4-MASONRY PLS. AS SHOWN

Rivets 3/4"  
 Open Holes 1/2" or as noted.  
 Edge Distances 1/4"

GIRDER DETAILS  
**STEEL GIRDER BRIDGE**  
 1 SPAN 60'-0" SKEW 52°L OVER HEDDY RUN DITCH  
 24'-0" ROADWAY ON STATE ROAD - 50-K  
**INDIANA STATE HIGHWAY COMMISSION**  
**JACKSON COUNTY**  
 SCALE: 1" = 1'-0" MAY 28, 1932.  
 RECOMMENDED FOR APPROVAL: *Richard*  
 PROJECT: 50 STATION: 400+89  
 SECTION: K STRUCTURE NO. 4250  
 BRIDGE CONTRACT NO. 518

DESIGNED J.F.H. 3-2-32 C.V.N. 6-5-32  
 DRAWN R.M.V. 5-2-32 C.V.N. 4-28-32  
 TRACED H.C.H. 8-11-32 C.V.N. 8-28-32

BRIDGES OVER 20' SPAN			
STATE	FED. PROJ. NO.	SHEET NO.	TOTAL SHEETS
IND. 50	1932	18	24
SECTION-K			

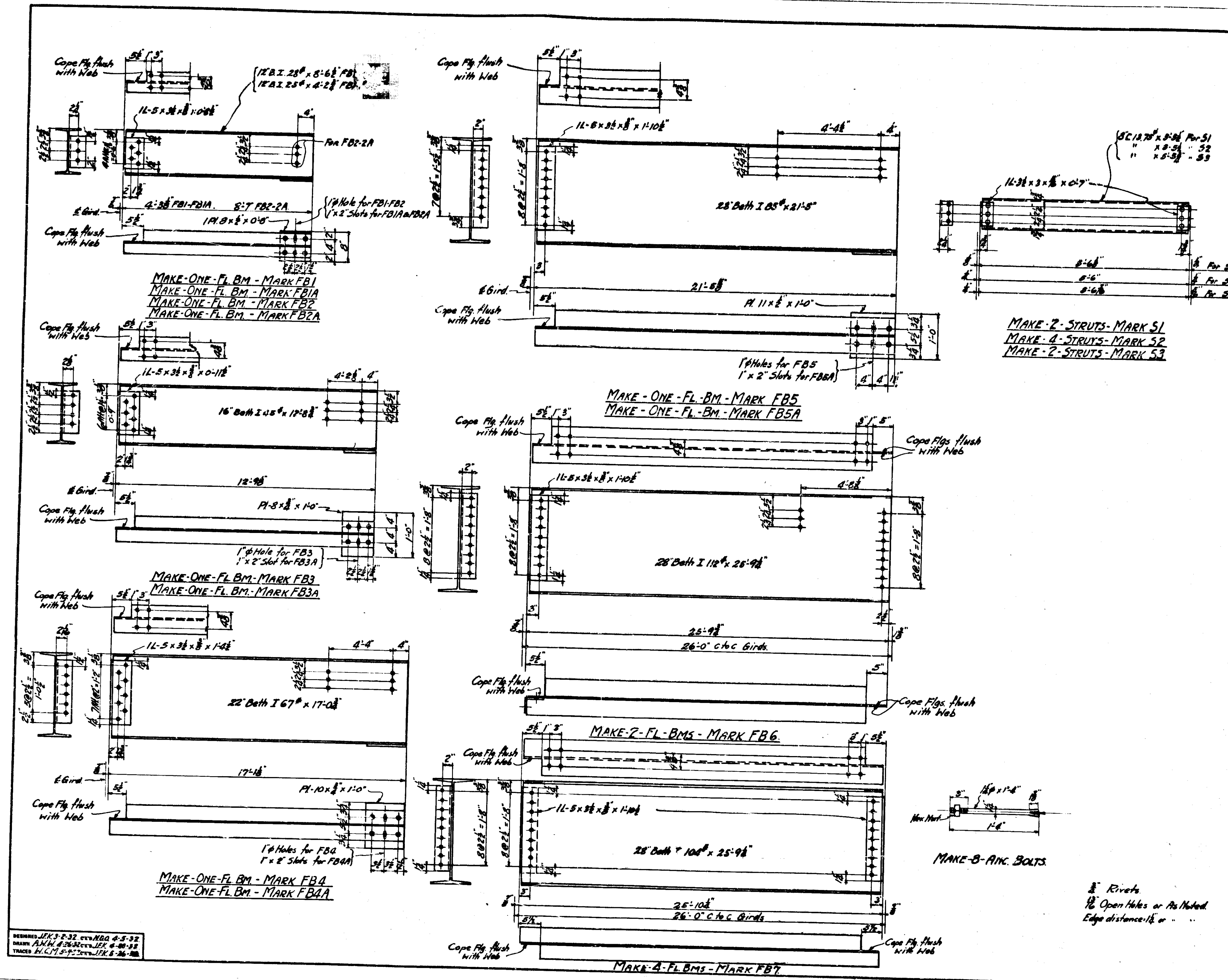


Rivets  $\frac{3}{4}$ " or as noted.  
 Open Holes  $\frac{1}{8}$ "  
 Edge distances  $1\frac{1}{2}$ " or as noted

GIRDER DETAILS  
**STEEL GIRDER BRIDGE**  
 1 SPAN 60'-0" SKEW 52°L  
 OVER HEDDY RUN DITCH  
 24'-0" ROADWAY  
 ON STATE ROAD - 50-K  
**INDIANA STATE HIGHWAY COMMISSION**  
 JACKSON COUNTY  
 SCALE: - 1" = 1'-0"  
 MAY 28, 1932.  
 RECOMMENDED FOR APPROVAL: *H. Hardy*  
 ENGINEER OF BRIDGE WORK  
 PROJECT: - 50  
 SECTION: - K  
 DRAWING: - 57 OF 8  
 STATION: - 400+89.  
 BRIDGE CONTRACT NO. 518  
 STRUCTURE NO. 1250

REVISIONS: J.E.K. 2-2-32 CTS. N.B.O. 4-5-32  
 H.M.A. 4-26-32 CTS. J.E.K. 4-28-32  
 T.M.C. 8-12-32 CTS. J.E.K. 8-28-32





No. Pcs	SECTION	LENGTH	LOCATION	MARKT.
2	28' Both I 112	28'-9 1/4"	Fl. Bm. FB6	2772
4	28' "	28'-9 1/4"	" " FB7	10721
2	28' "	21'-5"	" " FB8A	2641
2	22' "	17'-0 1/2"	" " FB4-4A	2287
2	16' "	12'-0 1/2"	" " FB3-3A	1787
2	12' "	8'-6 1/2"	" " FB2-2A	479
2	12' "	8'-2 1/2"	" " FB1-1A	212
2	8' "	8'-8 1/2"	Strut S3	131
4	4' "	8'-8 1/2"	Struts 2-31 On 4-32	450
4	4' "	61'-3 1/2"	Bottom Flg. L	4905
4	4' "	8'-8 1/2"	Top Flg. L	4307
4	4' "	2'-6"	End Flg. L	1898
4	4' "	5'-8 1/2"	Top Flg. Spl. (from 6x8x7/8 L)	278
4	4' "	5'-4"	End Spl. L	295
4	4' "	5'-0 1/2"	" " "	291
4	4' "	5'-0 1/2"	" " "	276
18	1/2" x 3/4" x 28'	6'-0"	Int. " "	172
22	1/2" do	5'-11"	" " "	1554
12	1/2" do	1'-10 1/2"	Fl. Bm. Conca. L	234
2	1/2" do	1'-4 1/2"	" " "	29
4	1/2" do	0'-11 1/2"	" " "	20
44	1/2" x 3/4" x 28'	0'-8 1/2"	Brace to Top Flg. Fl. Beam	30
16	1/2" x 3/4" x 28'	0'-8 1/2"	Clip L to Struts	176
2	1/2" x 3/4" x 28'	5'-3 1/2"	Cap L	62
2	1/2" do	5'-2 1/2"	" "	43
2	1/2" do	5'-0 1/2"	" "	171
6	1/2" do	5'-0"	" "	42
2	1/2" do	4'-8 1/2"	" "	123
2	Pls 12 x 1/2	1'-8"	Sole Pls Per Girders	403
2	Pls 10 x 1/2	1'-0"	Bearing Pls. Fl. Beams	51
2	Pls 8 x 1/2	1'-0"	" "	41
4	Pls 2 1/2 x 7/8	4'-8 1/2"	Fills under End stiff L	287
4	Pls 7 x 7/8	4'-7 1/2"	" "	275
10	Pls do	1'-11 1/2"	" " Still L	271
2	Pls do	1'-4 1/2"	" "	40
4	Pls do	0'-11 1/2"	" "	28
4	Pls do	0'-8 1/2"	" "	41
4	Pls do	1'-2 1/2"	" "	480
2	Pls do	0'-11 1/2"	" "	37
2	Pls do	0'-6 1/2"	" "	15
2	Pls 11 x 1/2	1'-0"	Bearing Pls. Fl. Bms.	38
2	Pls 7 x 1/2	2'-7 1/2"	Bracing Pls. for Girder	30
2	Pls 8 x 1/2	0'-8"	Bearing Pls. " Fl. Beams	57
2	Pls 2 x 1/2	5'-0 1/2"	Fills Bottom End Still L	86
2	Pls 7 1/2 x 7/8	33'-11 1/2"	Web Pls	7269
4	Pls 1 1/2 x 3/4	27'-4 1/2"	" "	8960
20	Pls 9 x 3/4	5'-5 1/2"	Splice Pls	517
2	Pls 1 1/2 x 3/4	46'-1 1/2"	Bracing Pls. Per Girder	792
2	Pls do	26'-1"	Cover Pls. Top Flg.	1374
2	Pls do	12'-10 1/2"	" " " "	775
2	Pls do	12'-3 1/2"	" " " "	382
4	Pls do	1'-9 1/2"	Cover Spl. Pls.	367
2	Pls 7 x 1/4	1'-11 1/2"	Fills at Spl.	107
2	Pls 3 1/2 x 1/4	5'-4"	" "	24
2	Pls do	3'-2 1/2"	" "	32
2	Pls do	3'-2 1/2"	" "	30
20	1/4" x 1 1/2"	Anchor Bolts 11x11x11x11 each (Box)	" "	52
20	3/8" x 1'-0"	" "	" "	37
2044	1/2" x 3/4"	Rivets	" "	761
488	1/4" x 1/4"	" "	" "	125
			Total	61162

FLOOR BEAMS, STRUTS, & BILL OF STRUCT. STEEL.  
 STEEL GIRDER BRIDGE  
 I SPAN 60'-0" SKEW 32° L  
 OVER HEDDY RUN DITCH ON STATE ROAD - 50-K  
 INDIANA STATE HIGHWAY COMMISSION  
 JACKSON COUNTY MAY 28, 1932.  
 SCALE: 1"=10'  
 RECOMMENDED FOR APPROVAL: [Signature]  
 PROJECT: - 50 STATION: - 400+89  
 DRAWING: - 800'S BRIDGE CONTRACT NO 518  
 STRUCTURE NO (1250)