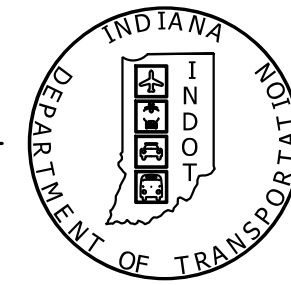


PROJECT	DESIGNATION
0710467	0710467
CONTRACT	BRIDGE FILE
B-33619	042-67-03172B

INDIANA DEPARTMENT OF TRANSPORTATION



INDEX				
STRUCTURE	TYPE	SPAN AND SKEW	OVER	STATION
042-67-03172B	STEEL TRUSS	175'-0" SQUARE	MILL CREEK	*79+20 Line "A"

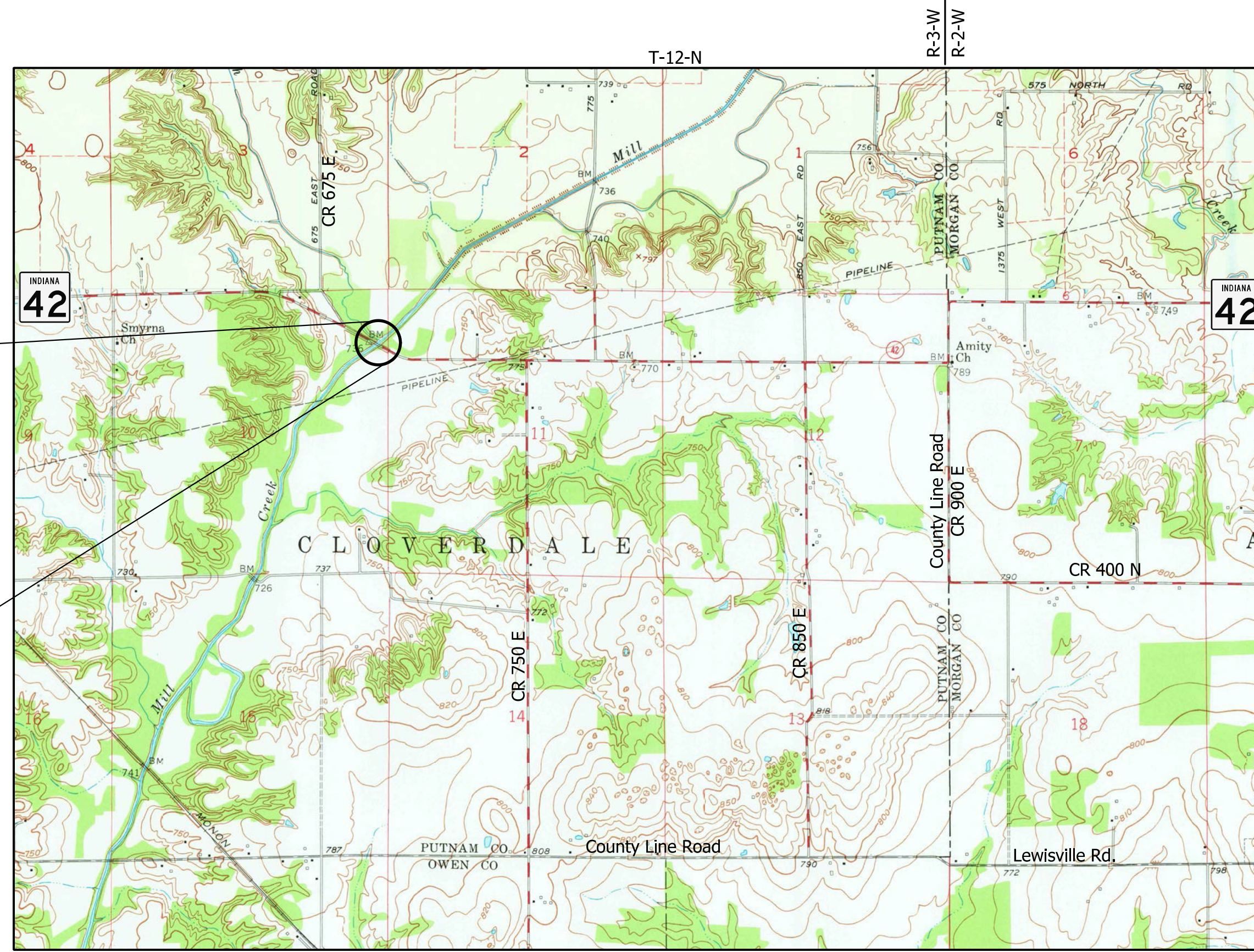
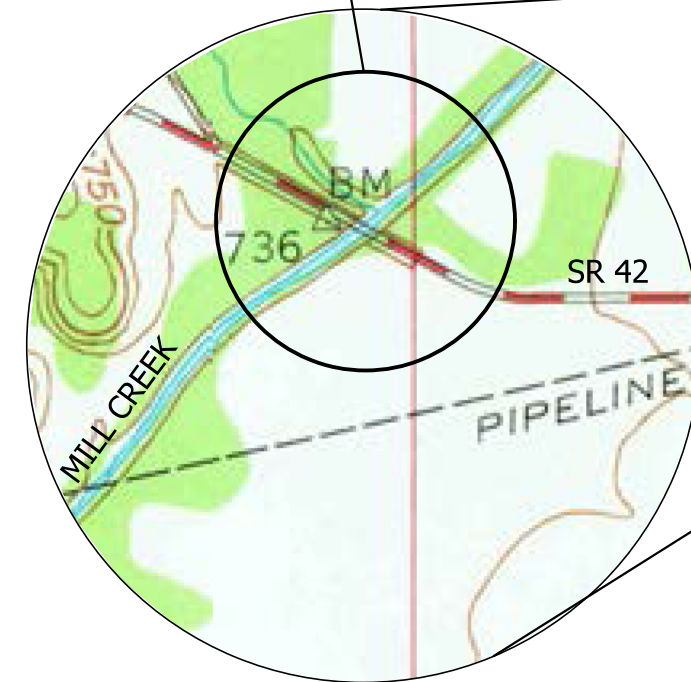
*Reestablished in field from 1940 plans
Bridge Contract No. 1979

BRIDGE REHABILITATION PLANS FOR SPANS OVER 20 FEET RP 36+47.0 SR 42 OVER MILL CREEK

PROJECT NO. 0710467 P.E.
PROJECT NO. NO ADDITIONAL R/W REQ'D. FOR THIS PROJECT R/W
PROJECT NO. 0710467 CONST.

BRIDGE REHABILITATION ON SR 42 OVER MILL CREEK LOCATED 3.47 MILES EAST OF US 231 IN SECTION 10, T-12-N, R-3-W, CLOVERDALE TOWNSHIP OF PUTNAM COUNTY, INDIANA Hydraulic Unit Code: 051202030510

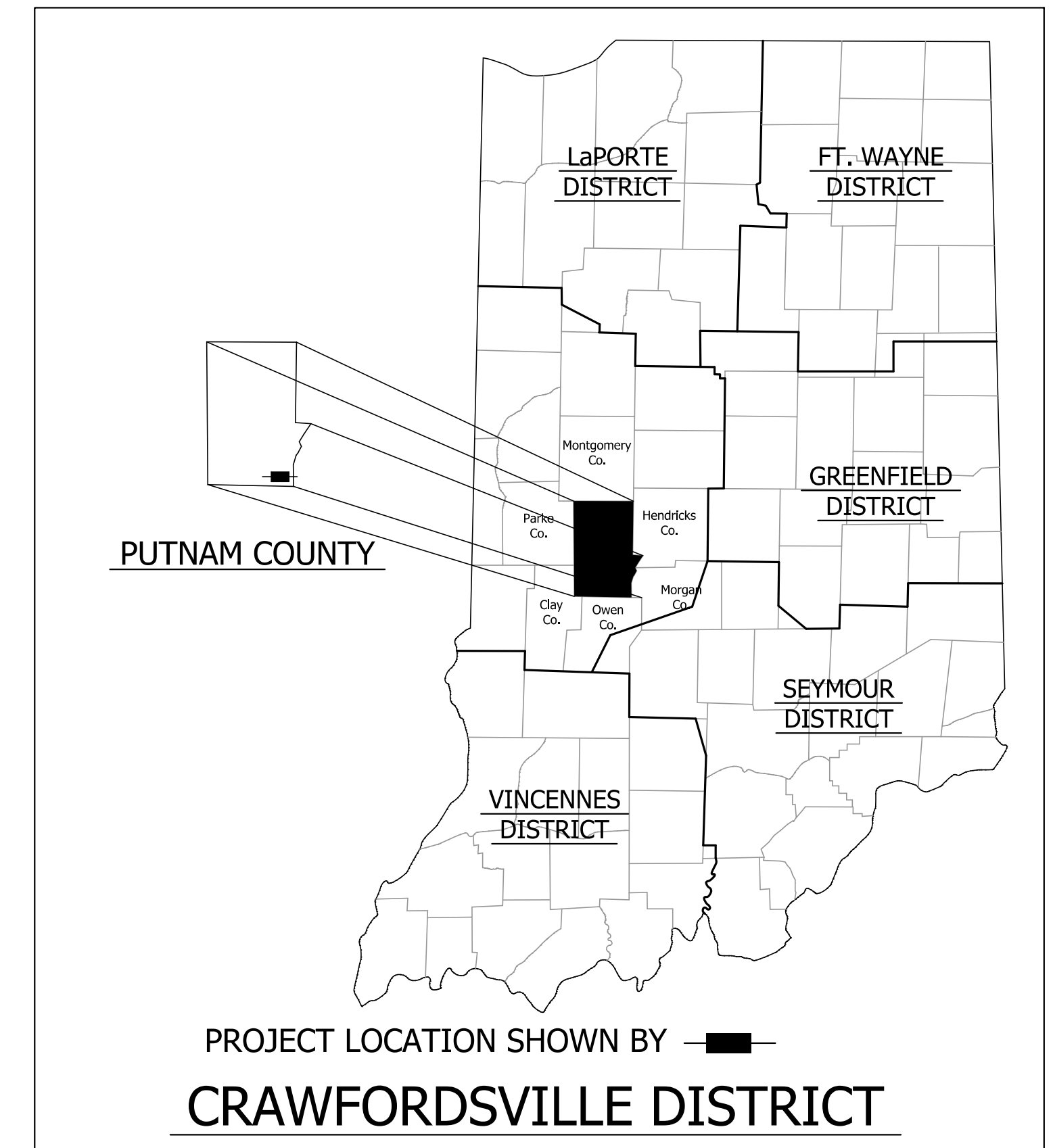
PROJECT LOCATION
PROJECT No. 0710467
STEEL TRUSS
SPAN: 175'-0"
SKEW: 0°, 24'-0" CLR RDWY WIDTH



LOCATION MAP
SCALE: 1" = 2000'

TRAFFIC DATA		SR 42
A.A.D.T. (2014)		1250 V.P.D.
A.A.D.T. (2034 PROJECTED)		1640 V.P.D.
D.H.V. (2034 PROJECTED)		177 V.P.H.
DIRECTIONAL DISTRIBUTION		48% EB ; 52% WB
TRUCKS		6.11% A.A.D.T. 11.94% D.H.V.

DESIGN DATA	
DESIGN SPEED	55 mph
PROJECT DESIGN CRITERIA	3R (Non-Freeway)
FUNCTION CLASSIFICATION	RURAL MAJOR COLLECTOR
RURAL/URBAN	RURAL
TERRAIN	LEVEL
ACCESS CONTROL	NONE



BRIDGE LENGTH:	0.034 MI.
ROADWAY LENGTH:	0.151 MI.
TOTAL LENGTH:	0.185 MI.
MAXIMUM GRADE:	0.50%

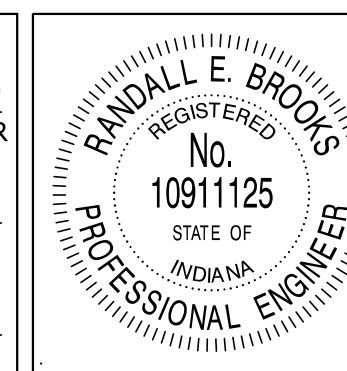
Latitude 39°29'49.56" N Longitude 86°43'33.65" W

INDIANA DEPARTMENT OF TRANSPORTATION
STANDARD SPECIFICATIONS DATED 2014
TO BE USED WITH THESE PLANS

BURGESS & NIPLE
Engineers ■ Architects ■ Planners

251 N. ILLINOIS ST.
CAPITOL CENTER SUITE 920
INDIANAPOLIS, IN 46221
PHONE (317) 237-2760
FAX (317) 237-2755

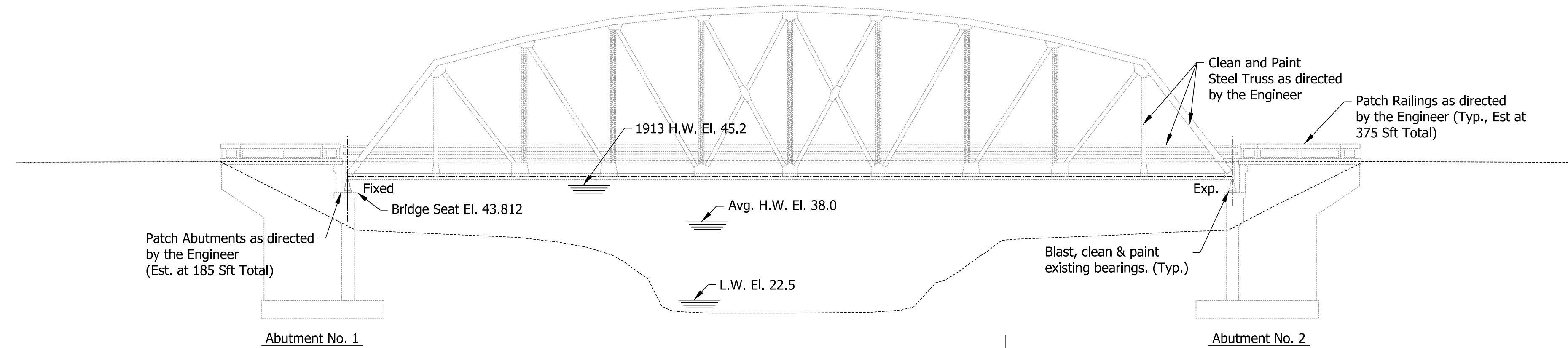
PLANS PREPARED BY:	BURGESS & NIPLE, INC.	(317) 237-2760
		PHONE NUMBER
APPROVED FOR LETTING:	<i>RWAS</i>	6-30-14
		DATE
	INDIANA DEPARTMENT OF TRANSPORTATION	DATE



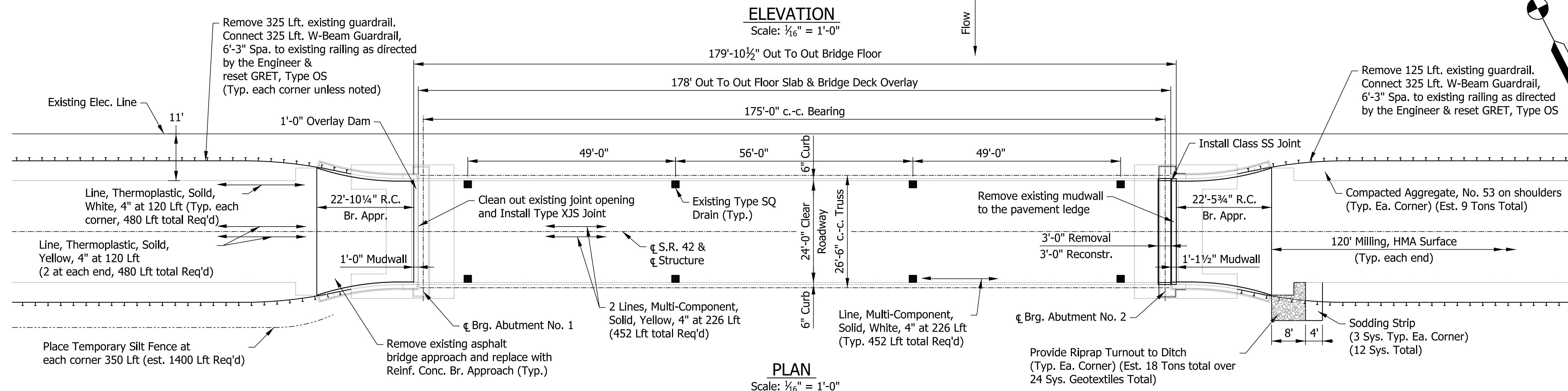
BRIDGE FILE	
042-67-03172B	
DESIGNATION	
0710467	
DWG. NO.	SHEET NO.
TI-01	1 of 7
CONTRACT	PROJECT
B-33619	0710467

\$\$\$\$\$DATE\$\$\$\$\$
\$\$\$\$\$SPECIFICATION\$\$\$\$\$

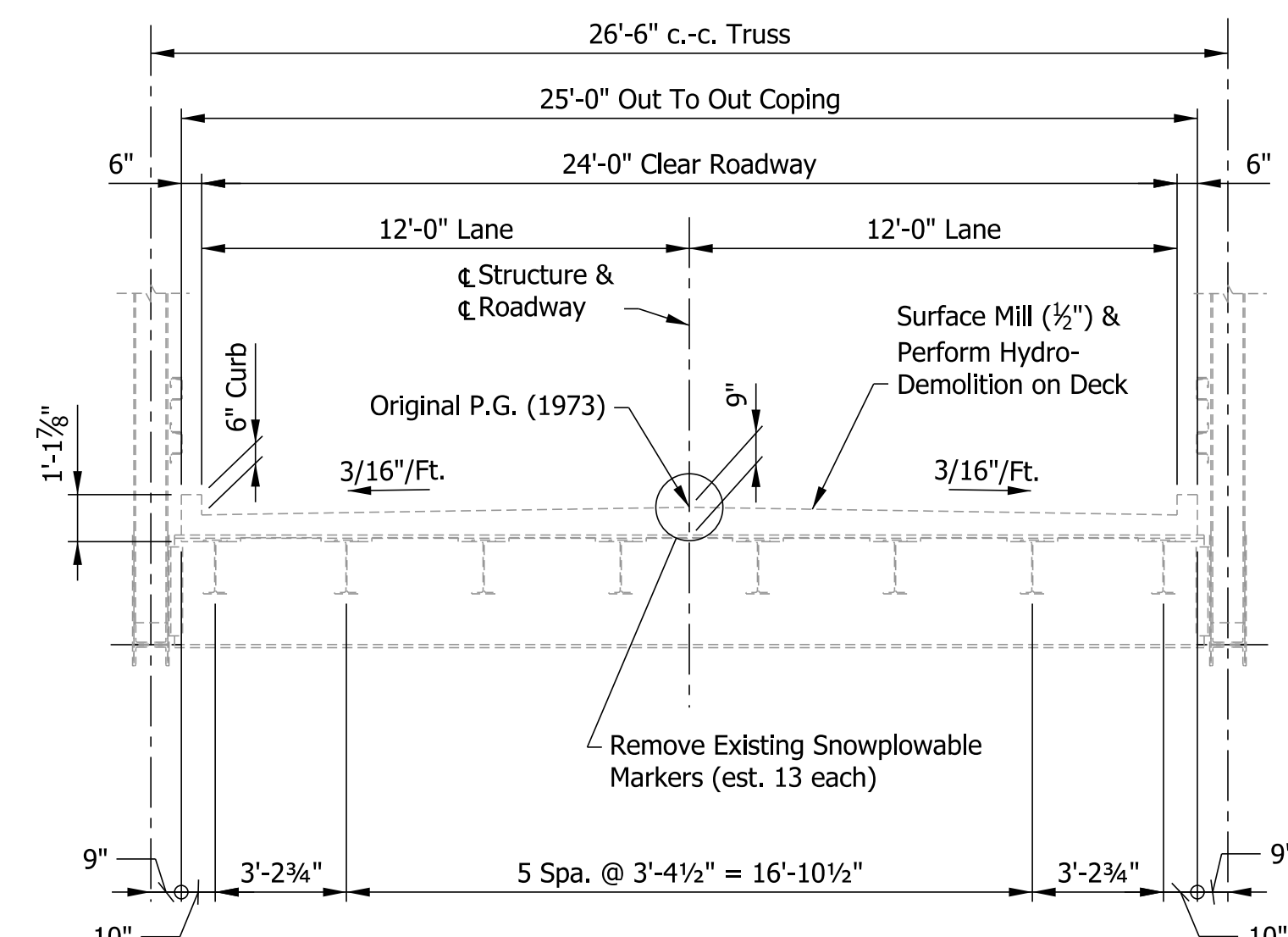
PVI Sta. 79+20
Elev. 50.55
V.C. = 350'
(From 1940 Existing Plans)
+0.50% -0.50%
Roadway is built to a 350' V.C.



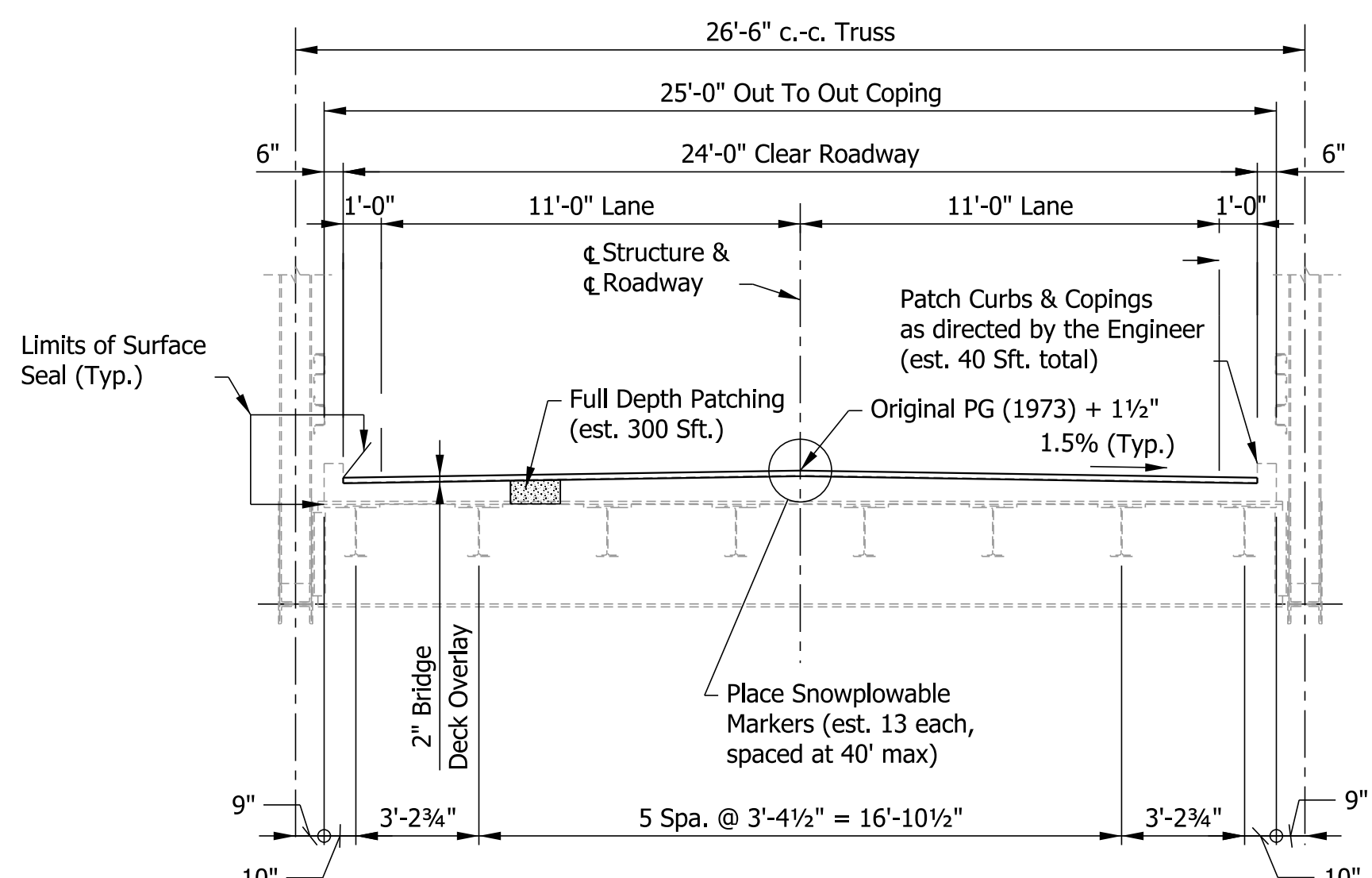
ELEVATION
Scale: 1/8" = 1'-0"



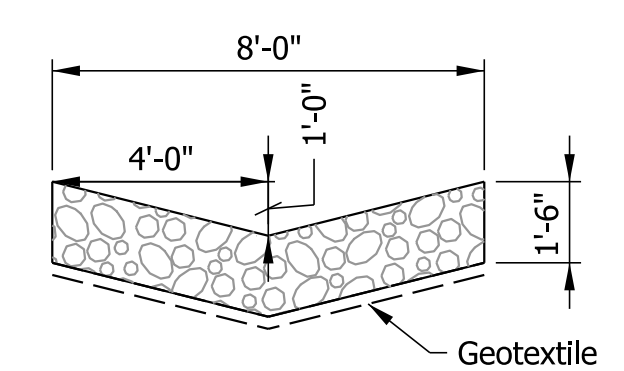
PLAN
Scale: 1/8" = 1'-0"



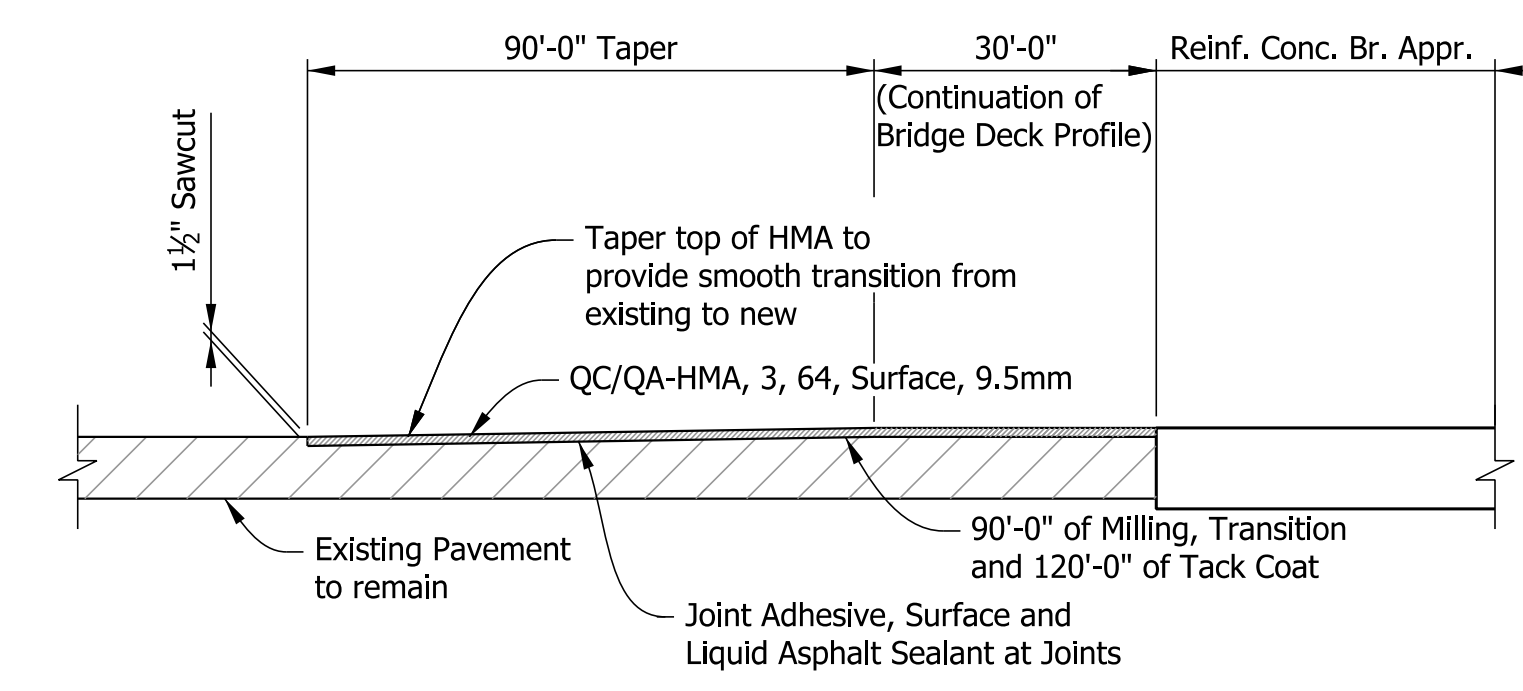
TYPICAL REMOVAL SECTION
Scale: 1/4" = 1'-0"



TYPICAL PROPOSED SECTION
Scale: 1/4" = 1'-0"



TYPICAL RIPRAP DRAINAGE TURNOUT
No Scale



WEDGE DETAIL
No Scale

**BRIDGE DECK OVERLAY
STEEL TRUSS BRIDGE**

1 Span: 175'-0"
Skew: Square
24'-0" Clear Roadway
State Road 42 over Mill Creek

GENERAL NOTES

Reinforcing steel cover shall be 2 1/2" in the top and 1" min. in the bottom of floor slab, and 2" in all other parts, unless noted.
Concrete in end bents, superstructure, and railings to be Class "C".
Chamfer exposed edges 1" unless noted.
Surface Seal curbs, concrete railings, copings, approach slabs, and all exposed wingwall faces. Estimated Quantity = 3376 Sft.
All reinforcing steel should be epoxy coated unless otherwise noted.
Plans of the existing structures are on file in the Records Department, Indiana Department of Transportation, as Bridge No. 42-F-3172 and 42-F-3172A and are available upon request. 175' Span steel truss plans are also available as Drawing Standard No. 475A Dated Sept. 12, 1933, Revised Apr. 2, 1940.

DESIGN DATA

Existing 1973 Rehab designed for H20-44 Loading in accordance with the 1973 AASHTO Specifications.
Current Rehab designed in accordance with the 2002 AASHTO Specifications.
Class "C" Concrete $f_c = 4000$ p.s.i.
Reinforcing Steel (Grade 60) $f_y = 60,000$ p.s.i.

MATERIAL NOTES

Bridge Deck Overlay:
2.0" Min. Latex Modified Portland Cement Concrete
HMA Surface:
165 lbs/sys QC/QA-HMA, 3, 64, Surface, 9.5mm
Shoulder:
Compacted aggregate, No. 53

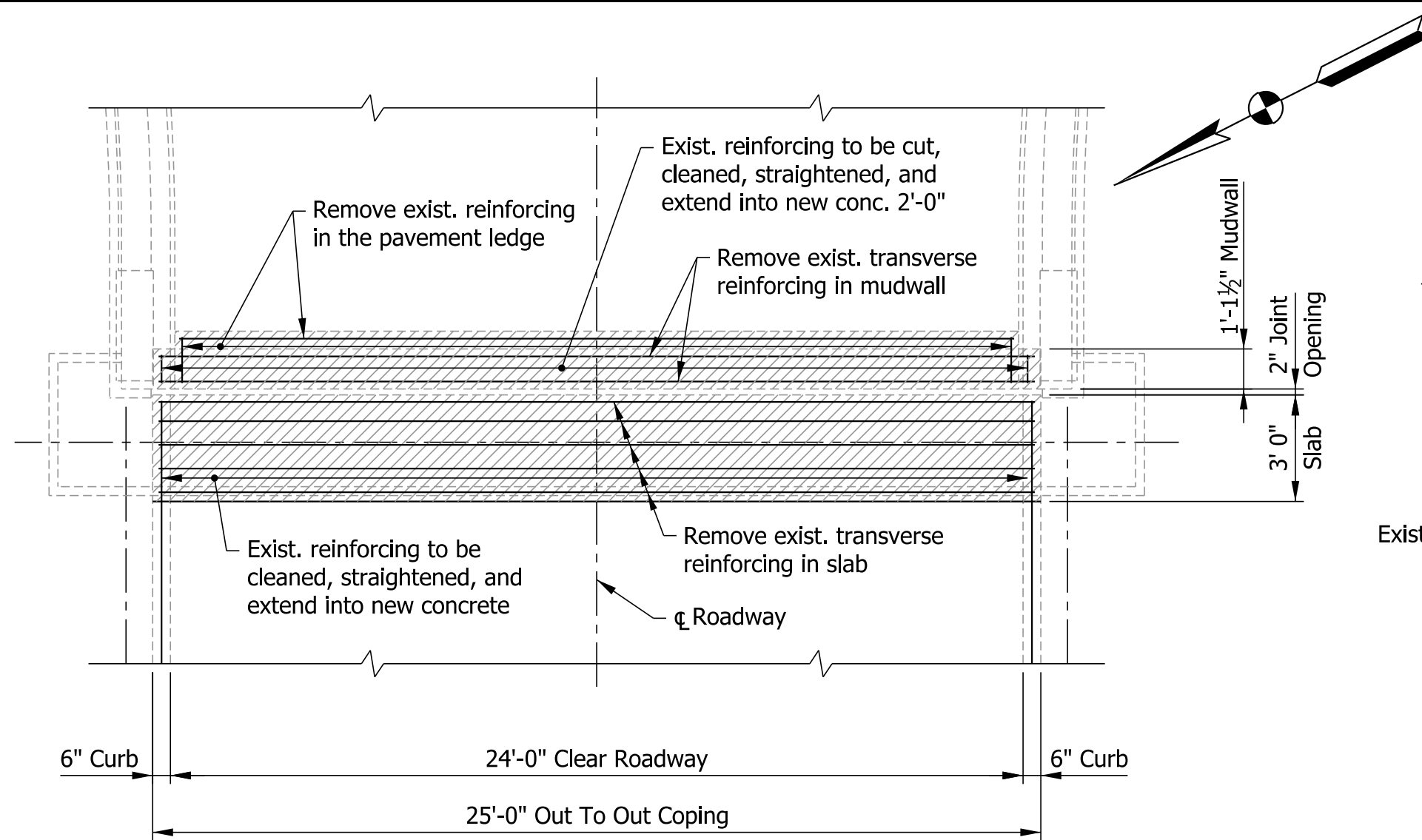
N. 1547935.2182 E. 3053188.7267 LINE "B" P.O.T. 74+61.16 "B"	N. 1547624.6658 E. 3053738.7840 LINE "B" P.C. 80+92.83 "B"	N. 1547436.6291 E. 3054071.8388 LINE "B" P.I. 84+75.30 "B"
---	---	---

CURVE DATA Sta. 84+75.30 "B" $\Delta = 29^\circ 54'$ Left $R = 1432.39'$ $T = 382.47'$ $L = 747.50'$ $E = 50.18'$	RECOMMENDED FOR APPROVAL <i>RWB</i> DESIGN ENGINEER DATE: 6-30-14
--	---

DESIGNED: JLF	DRAWN: JLF
CHECKED: MRS	CHECKED: MRS

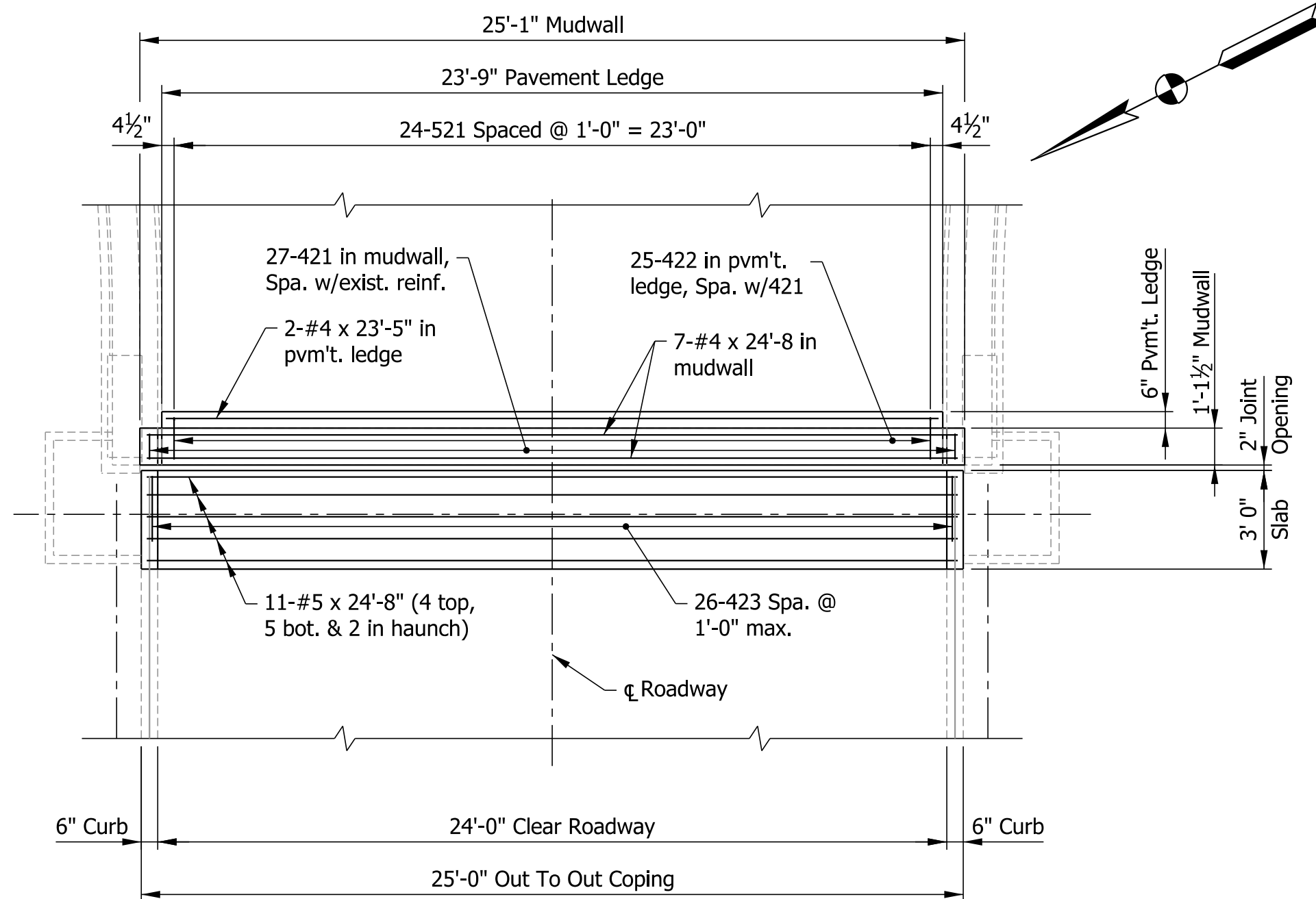
INDIANA DEPARTMENT OF TRANSPORTATION	
STATE ROAD 42 OVER MILL CREEK GENERAL PLAN	

HORIZONTAL SCALE AS NOTED	BRIDGE FILE 042-67-03172B
VERTICAL SCALE	DESIGNATION 0710467
SURVEY BOOK B-33619	DWG. NO. GP-01
	SHEET NO. 4 of 7
	PROJECT 0710467



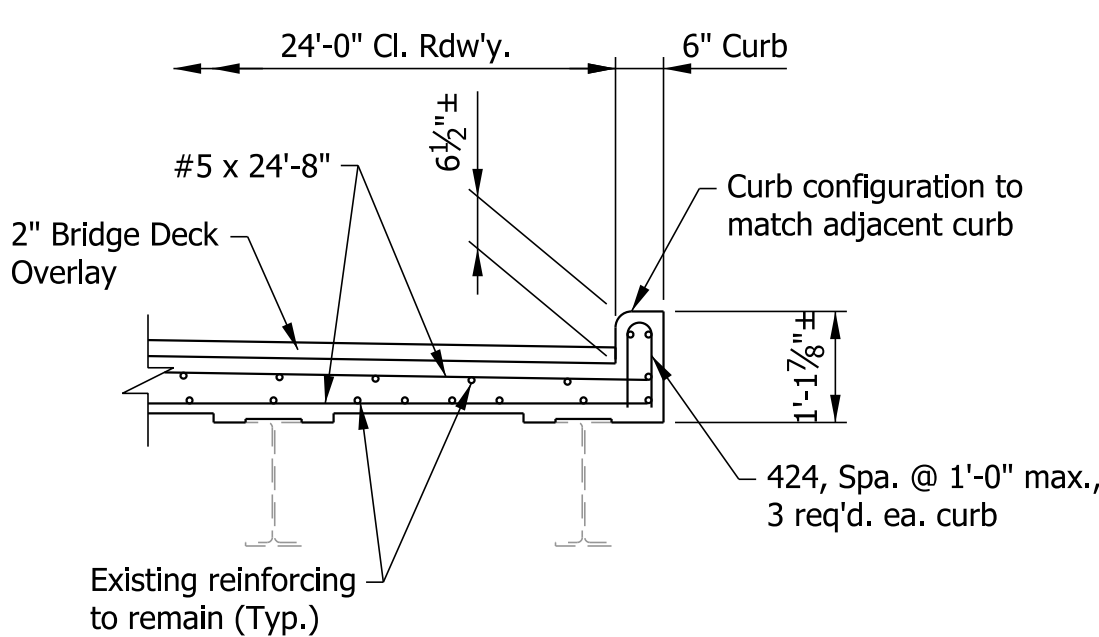
EXPANSION JOINT REMOVAL PLAN

ABUTMENT No. 2
Scale: 1/4" = 1'-0"



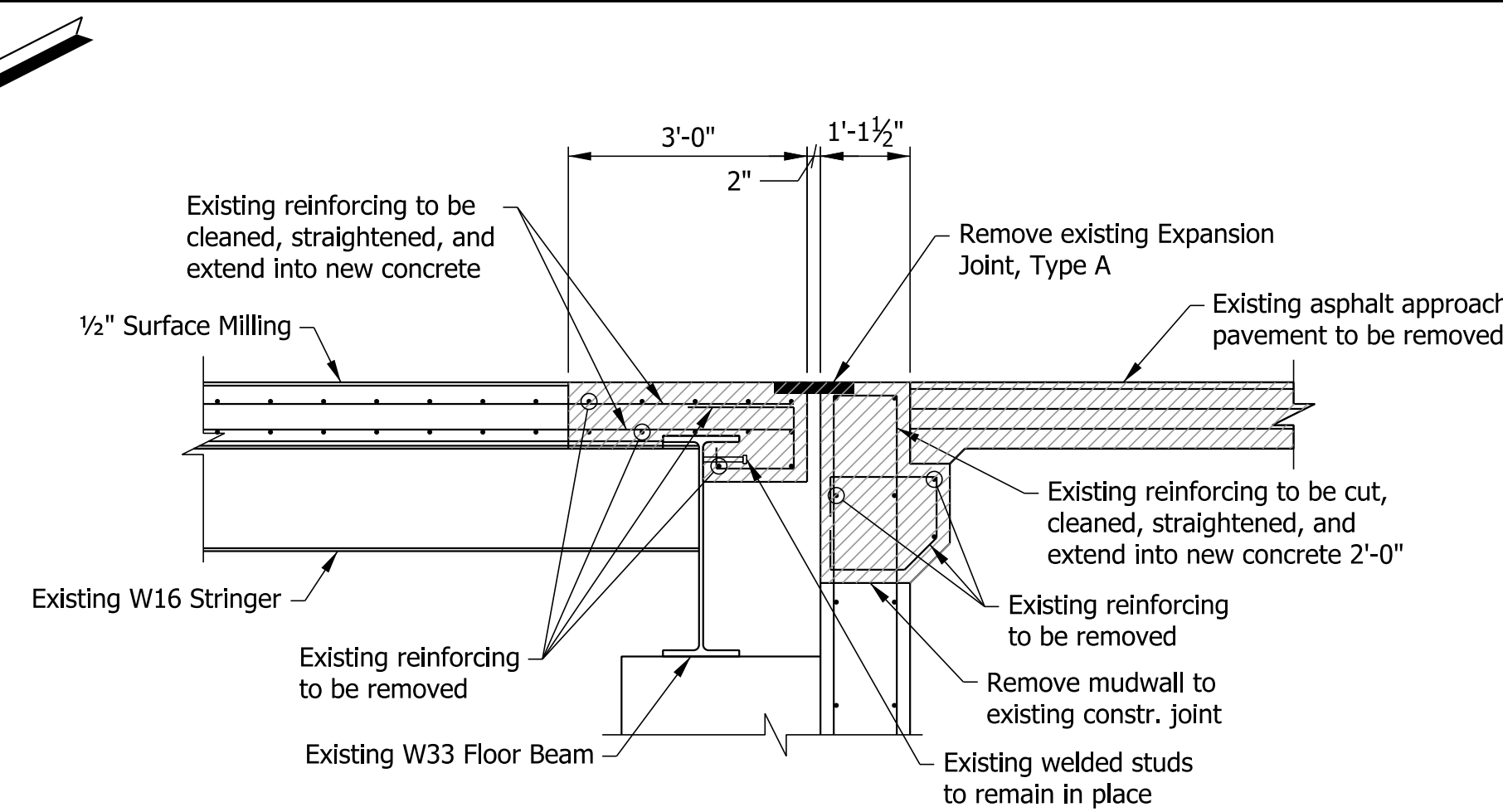
EXPANSION JOINT CONSTRUCTION PLAN

ABUTMENT No. 2
Scale: 1/4" = 1'-0"



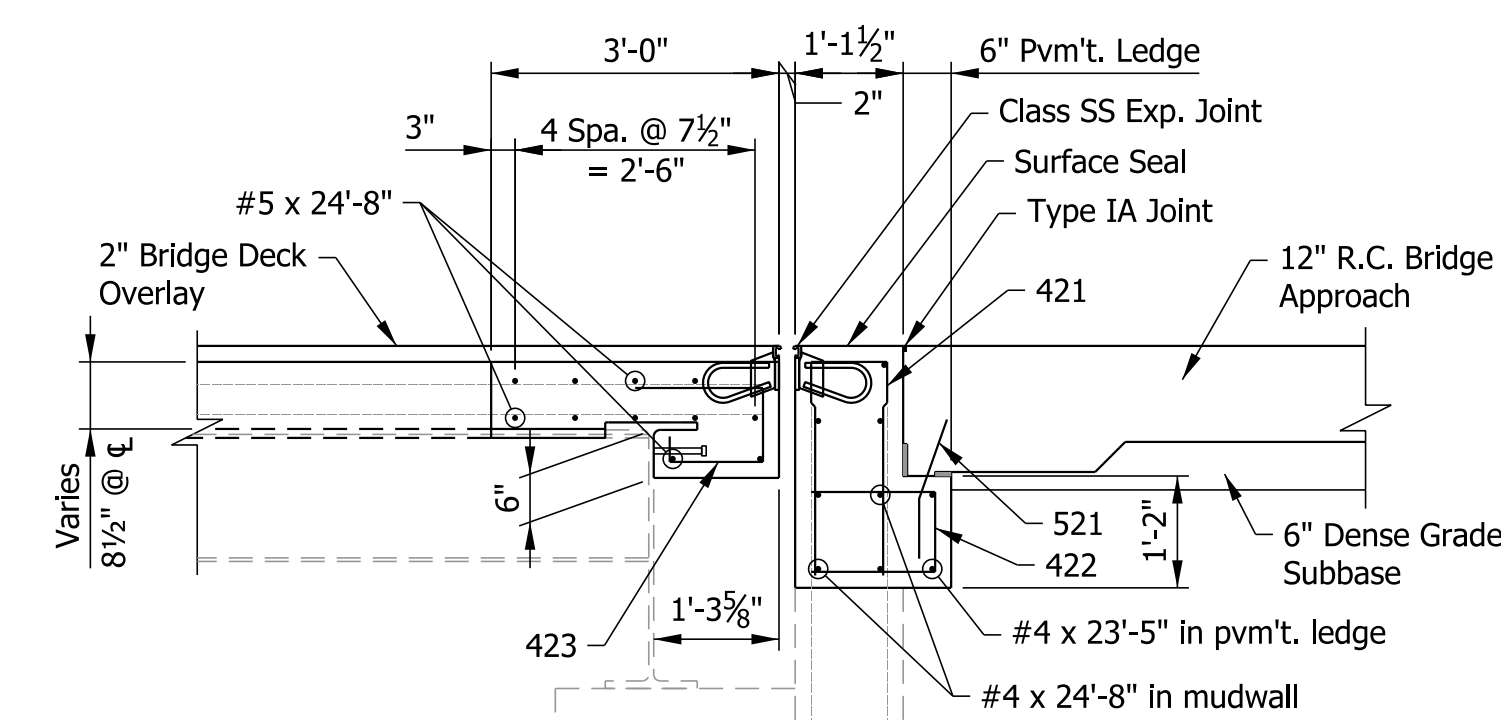
TYPICAL CURB SECTION

Scale: 1/2" = 1'-0"



TYPICAL REMOVAL SECTION

ABUTMENT No. 2
Scale: 1/2" = 1'-0"



TYPICAL PROPOSED SECTION

ABUTMENT No. 2
Scale: 1/2" = 1'-0"

NOTES:

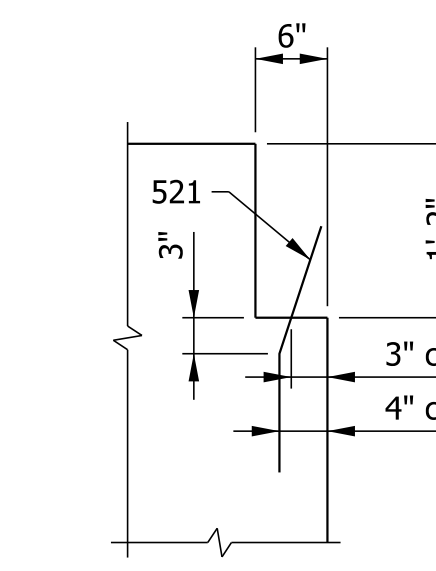
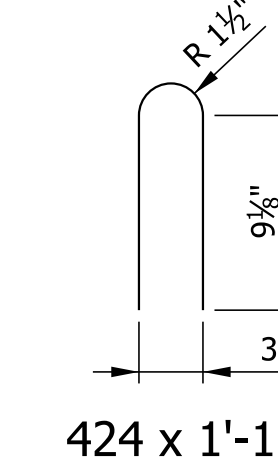
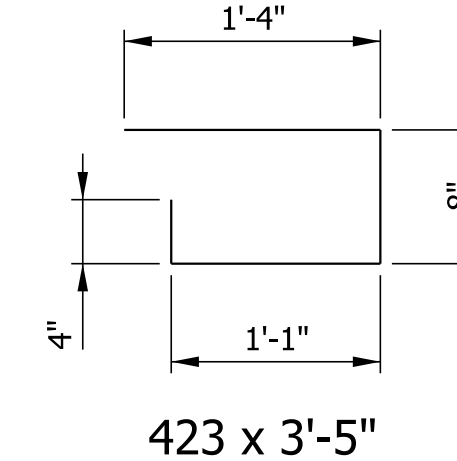
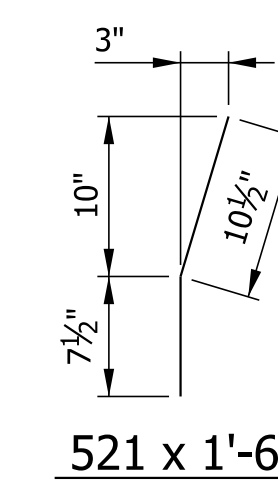
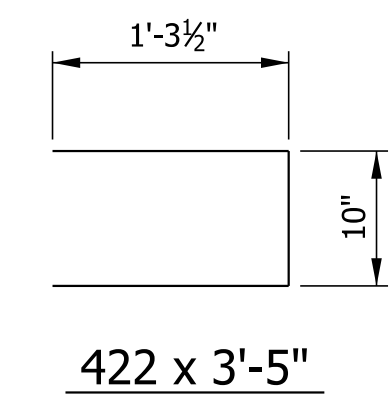
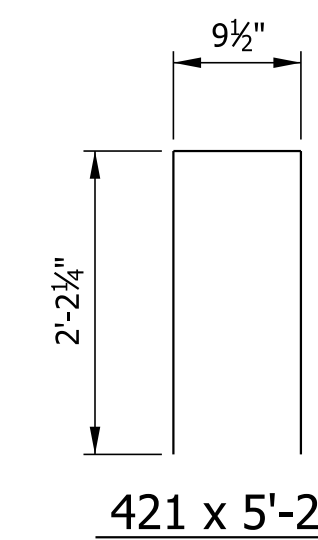
All reinforcing to be epoxy coated.
For Reinforcing Bar Notes, see Std. Dwg. 703-BRST-01.
For additional Class "S-S" Expansion Joint Details, see Std. Dwgs. 724-BSSJ-01 thru 09.

BILL OF MATERIALS
ABUTMENT No. 1

MISCELLANEOUS	
Type XJS Joint	25 Lft.
Overlay Dam	24 Sft.

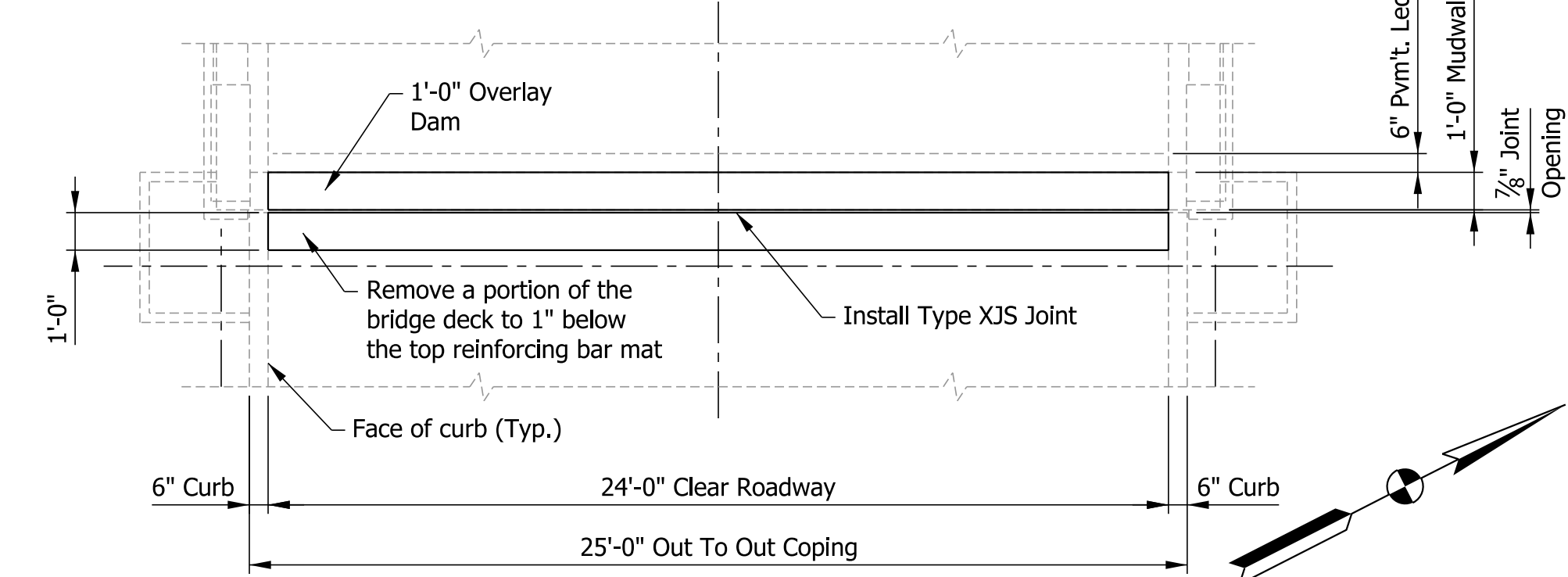
BILL OF MATERIALS
ABUTMENT No. 2

EPOXY COATED REINFORCING STEEL			
Size & Mark	No. Of Bars	Length	Weight (lbs.)
521	24	1'-6"	
#5	11	24'-8"	
Total E.C. #5			321
421	27	5'-2"	
422	25	3'-5"	
423	26	3'-5"	
424	6	1'-11"	
#4	7	24'-8"	
#4	2	23'-5"	
Total E.C. #4			364
Total E.C. Reinforcing			685
CONCRETE			
Class C In Superstructure			5.3 Sys.
MISCELLANEOUS			
Class "SS" Expansion Joint			25 Lft.
Surface Seal			30 Sft.



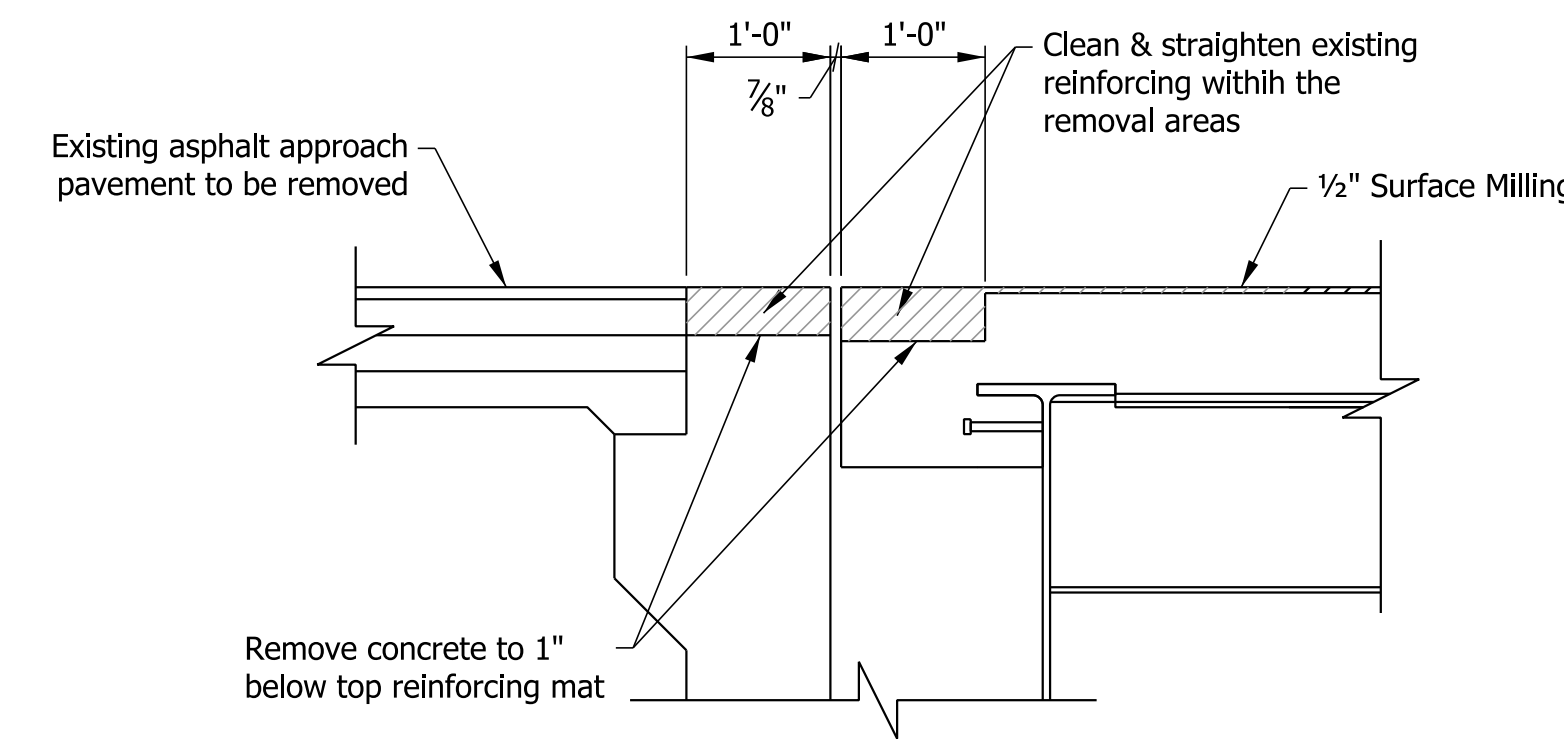
PAVEMENT LEDGE SECTION

Scale: 3/4" = 1'-0"



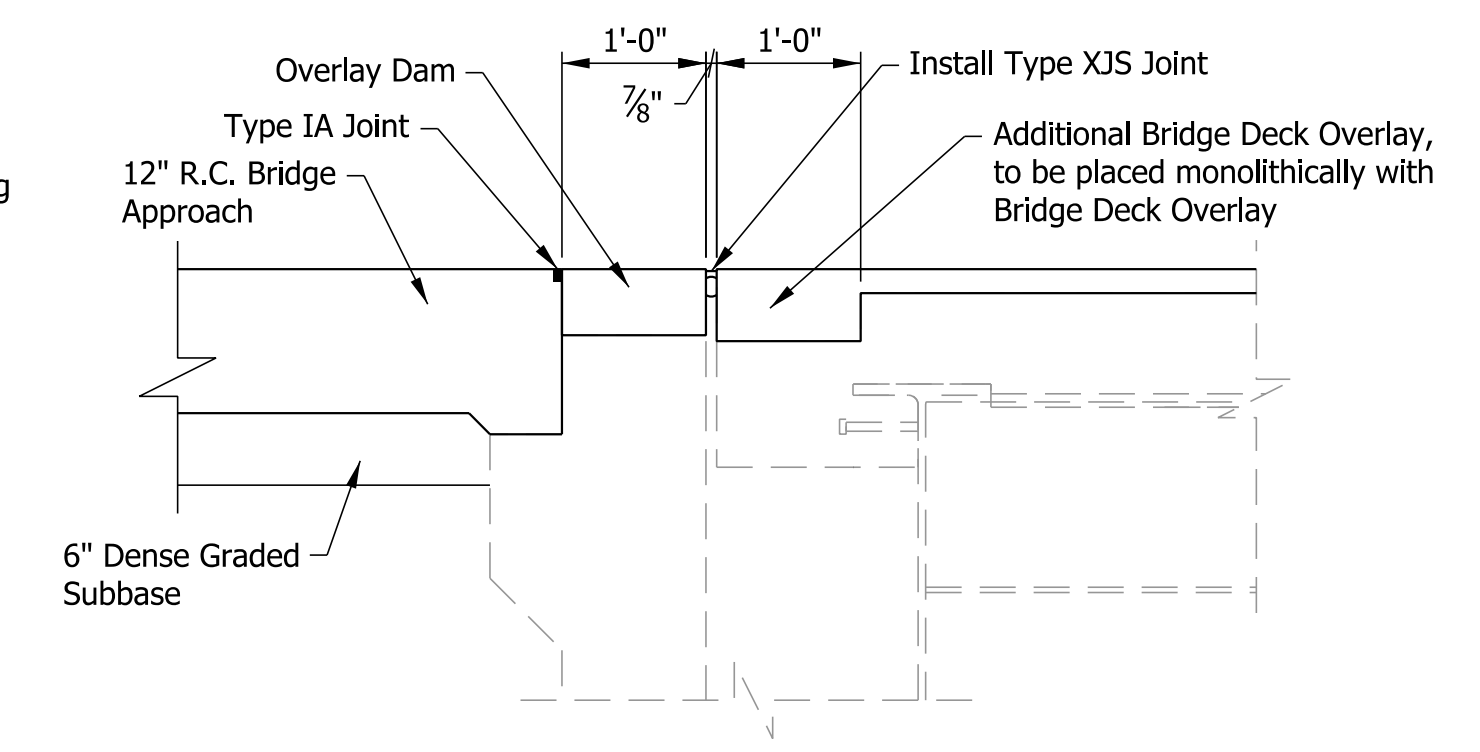
EXPANSION JOINT CONSTRUCTION PLAN

ABUTMENT No. 1
Scale: 1/4" = 1'-0"



TYPICAL REMOVAL SECTION

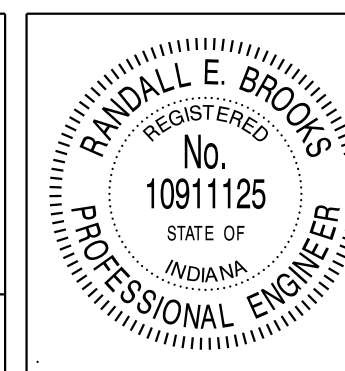
ABUTMENT No. 1
Scale: 3/4" = 1'-0"



TYPICAL PROPOSED SECTION

ABUTMENT No. 1
Scale: 3/4" = 1'-0"

\$\$\$\$\$\$DATE\$\$\$\$\$\$ \$\$\$\$\$\$TIME\$\$\$\$\$\$ \$\$\$\$\$\$SPECIFICATIONS\$\$\$\$\$\$ \$\$\$\$\$\$

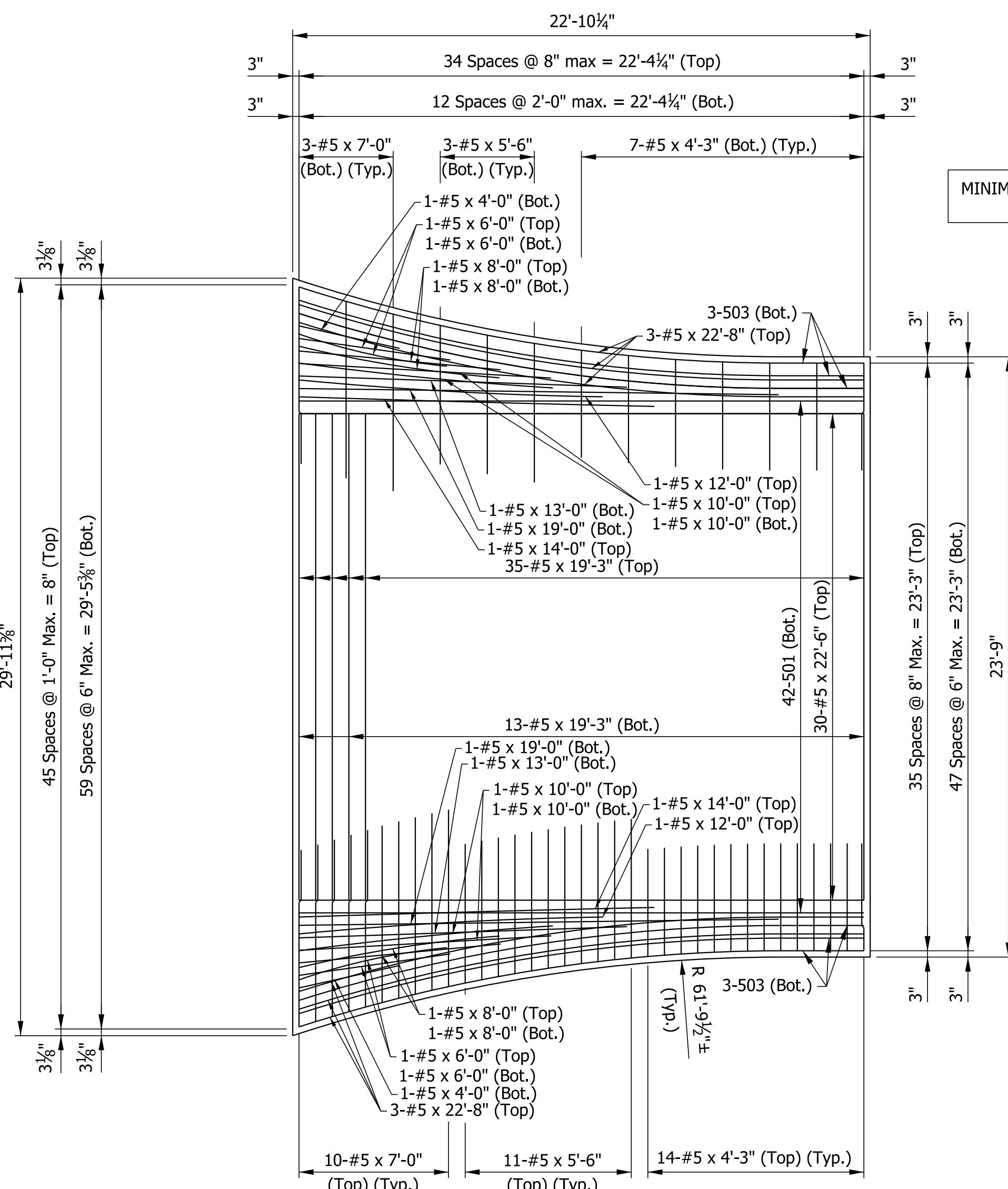


RECOMMENDED FOR APPROVAL	<i>RWB</i>	6-30-14
DESIGNED:	JLF	DRAWN:
CHECKED:	MRS	CHECKED:

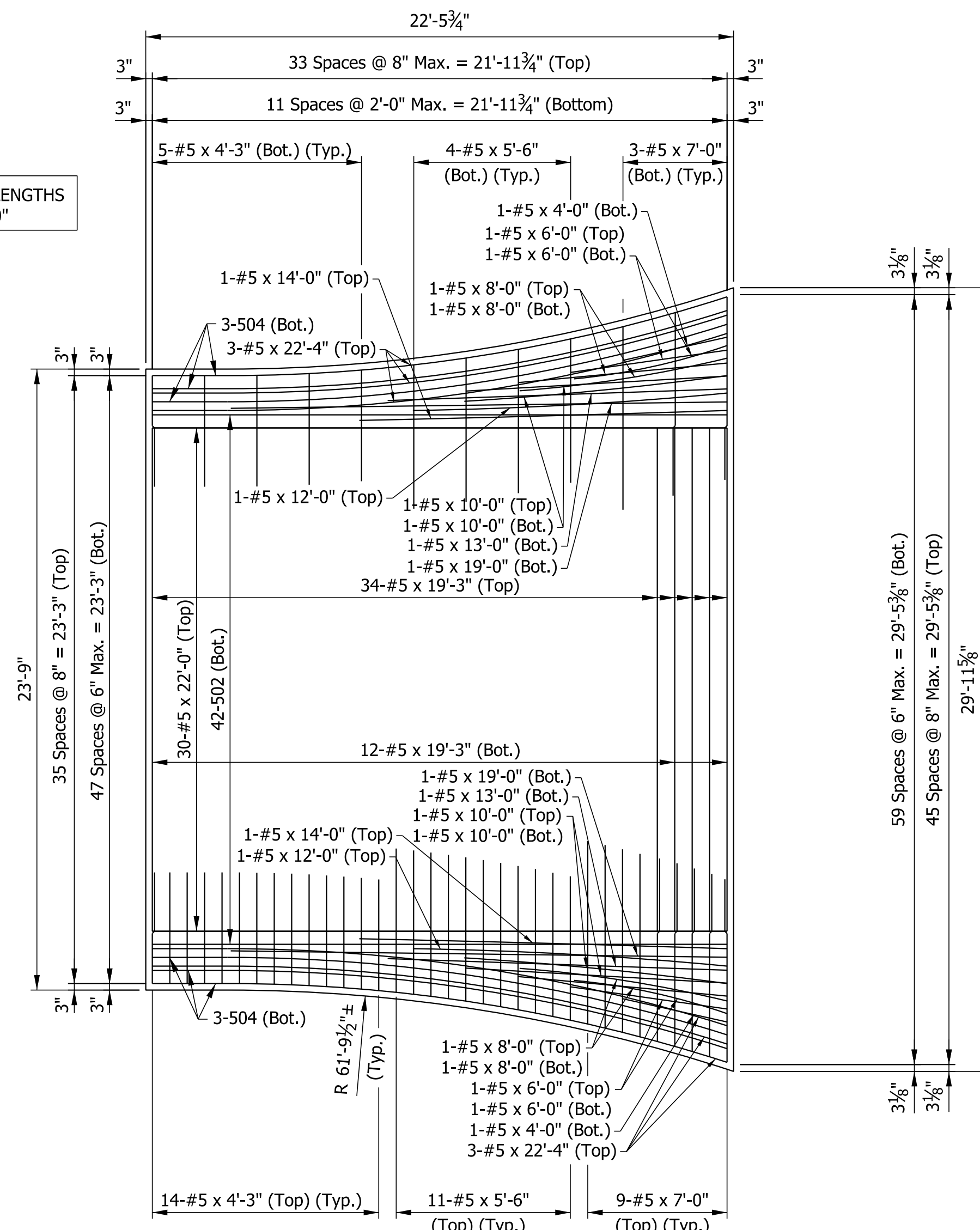
INDIANA
DEPARTMENT OF TRANSPORTATION

STATE ROAD 42 OVER MILL CREEK
EXPANSION JOINT RECONSTRUCTION

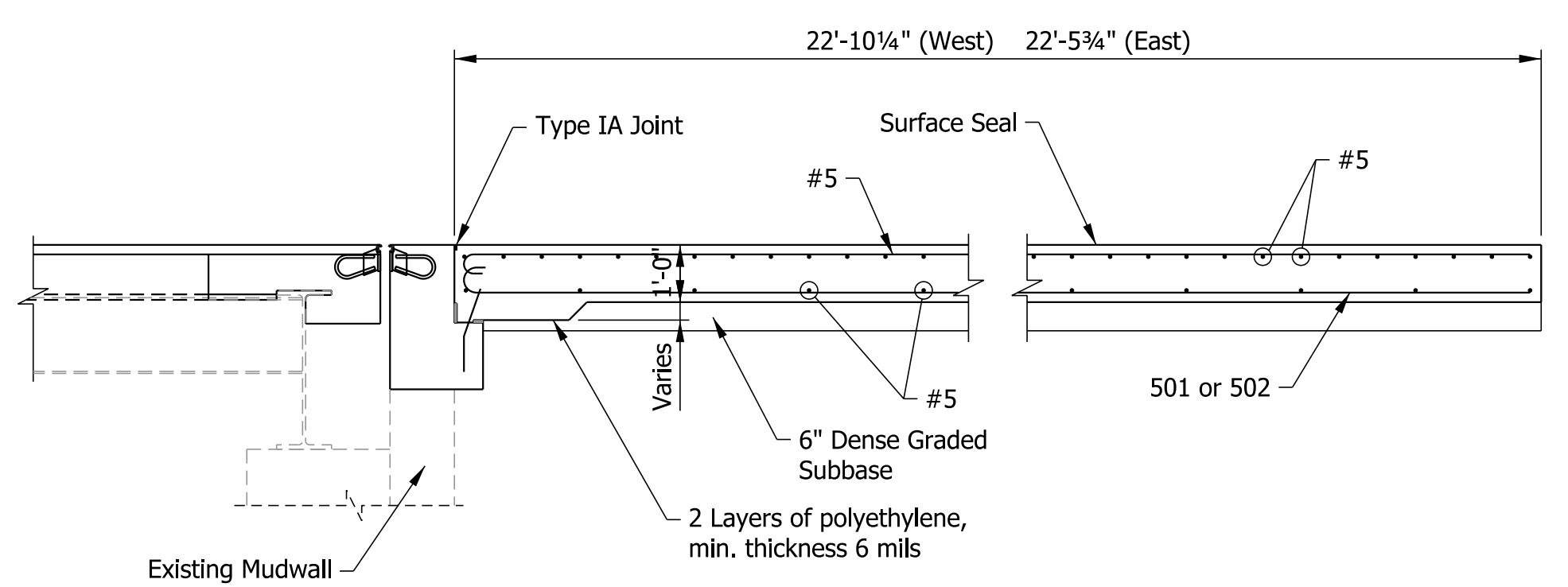
HORIZONTAL SCALE	BRIDGE FILE	
AS NOTED	042-67-03172B	
VERTICAL SCALE	DESIGNATION	
	0710467	
SURVEY BOOK	DWG. NO.	SHEET NO.
	SS-01	5 of 7
CONTRACT	PROJECT	
B-33619	0710467	



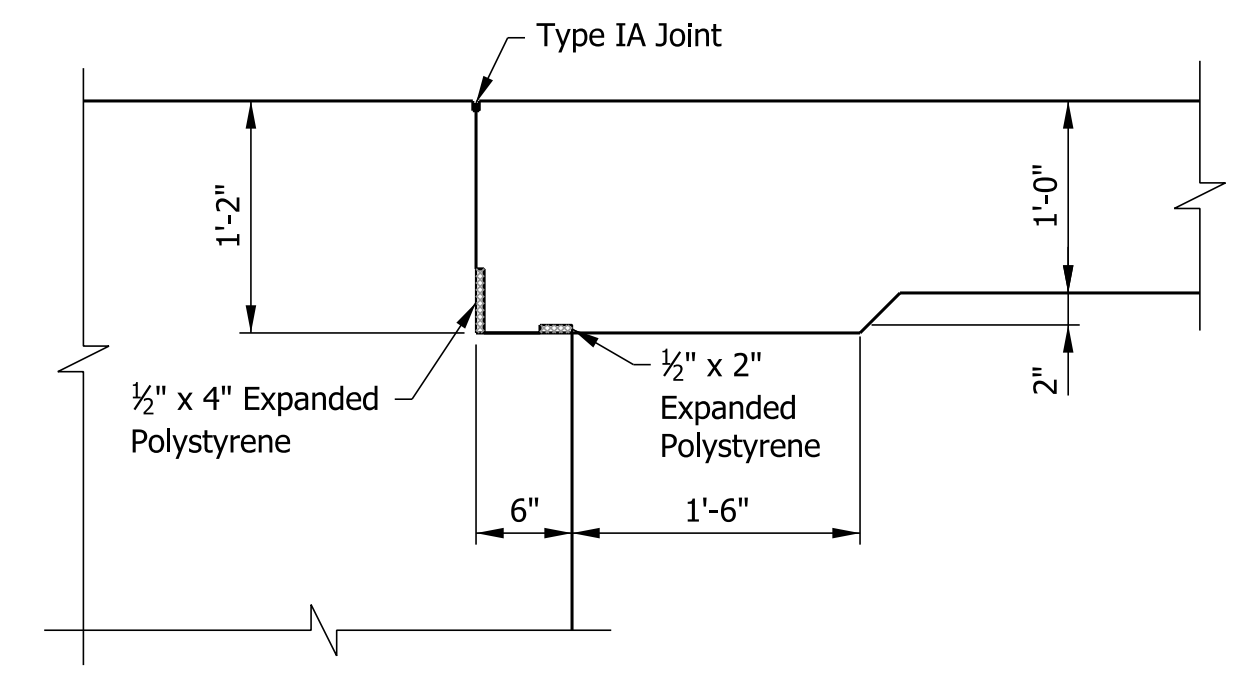
WEST APPROACH SLAB PLAN
Scale: 1/4" = 1'-0"



EAST APPROACH SLAB PLAN
Scale: 1/4" = 1'-0"



TYPICAL PROPOSED SECTION
Scale: 3/8" = 1'-0"



PAVEMENT LEDGE DETAIL
Scale: 1" = 1'-0"

"a"

7" Hook (#5)

Mark	"a"	Length
501	22'-4"	22'-11"
502	22'-0"	22'-7"
503	22'-8"	23'-3"
504	22'-3"	22'-10"

BILL OF MATERIALS

West Approach

EPOXY COATED REINFORCING STEEL			
Size & Mark	No. Of Bars	Length	Weight (lbs.)
501	42	22'-11"	
503	6	23'-3"	
#5	6	22'-8"	
#5	30	22'-6"	
#5	48	19'-3"	
#5	2	19'-0"	
#5	2	14'-0"	
#5	2	13'-0"	
#5	2	12'-0"	
#5	4	10'-0"	
#5	4	8'-0"	
#5	26	7'-0"	
#5	4	6'-0"	
#5	28	5'-6"	
#5	42	4'-3"	
#5	2	4'-0"	
Total E.C. Reinforcing			3725
MISCELLANEOUS			
Reinf. Conc. Br. Appr., 12"			64.7 Sys.
Dense Graded Subbase, 6"			10.8 Cys.
Surface Seal			583 Sft.

BILL OF MATERIALS

East Approach

EPOXY COATED REINFORCING STEEL			
Size & Mark	No. Of Bars	Length	Weight (lbs.)
502	42	22'-7"	
504	6	22'-10"	
#5	6	22'-4"	
#5	30	22'-0"	
#5	46	19'-3"	
#5	2	19'-0"	
#5	2	14'-0"	
#5	2	13'-0"	
#5	2	12'-0"	
#5	4	10'-0"	
#5	4	8'-0"	
#5	24	7'-0"	
#5	4	6'-0"	
#5	30	5'-6"	
#5	38	4'-3"	
#5	2	4'-0"	
Total E.C. Reinforcing			3630
MISCELLANEOUS			
Reinf. Conc. Br. Appr., 12"			63.7 Sys.
Dense Graded Subbase, 6"			10.6 Cys.
Surface Seal			574 Sft.

NOTES:

All reinforcing to be epoxy coated.
For Reinforcing Bar Notes, see Std. Dwg. 703-BRST-01.
Cost of Type IA Joint to be included in cost of other items.
Contractor to place 1" Exp. Joint Mat'l. between new approach and the existing wings.

\$\$\$\$\$\$DATE\$\$\$\$\$\$ \$\$\$\$\$\$TIME\$\$\$\$\$\$ \$\$\$\$\$\$SPECIFICATION\$\$\$\$\$\$ \$\$\$\$\$\$

		RECOMMENDED FOR APPROVAL <i>RWB</i> 6-30-14 DESIGN ENGINEER DATE	INDIANA DEPARTMENT OF TRANSPORTATION STATE ROAD 42 OVER MILL CREEK APPROACH SLAB DETAILS	HORIZONTAL SCALE AS NOTED BRIDGE FILE 042-67-03172B
DESIGNED: JLF CHECKED: MRS	DRAWN: MAK CHECKED: MRS	VERTICAL SCALE DESIGNATION 0710467		SURVEY BOOK DWG. NO. AS-01 SHEET NO. 6 of 7
CONTRACT B-33619		PROJECT DESIGNATION 0710467		

