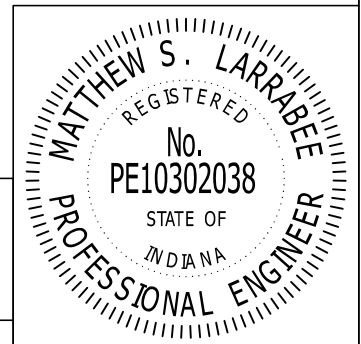


S.R. 38 PREVENTATIVE MAINTENANCE WITH HMA OVERLAY  
FROM S.R. 32 TO I-69  
IN HAMILTON COUNTY & MADISON COUNTY, IN

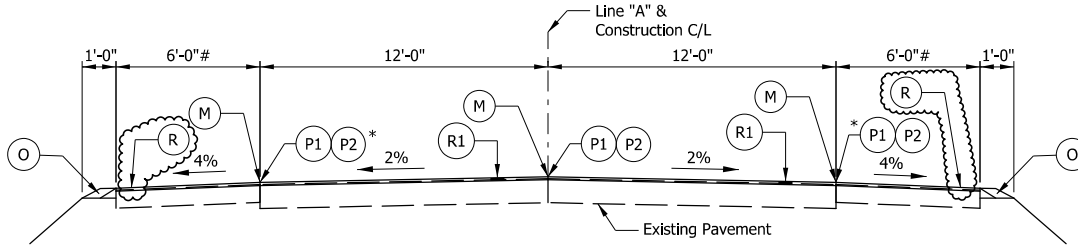
TITLE \_\_\_\_\_ 1  
 CONSTRUCTION PLANS INDEX \_\_\_\_\_ 2  
 STRIP MAP \_\_\_\_\_ 3 - 14  
 TYPICAL CROSS SECTIONS \_\_\_\_\_ 15 - 16  
 PUBLIC ROAD & APPROACH SUMMARY \_\_\_\_\_ 17 - 18  
 RESURFACING & MILLING SUMMARY \_\_\_\_\_ 19  
 PATCHING SUMMARY \_\_\_\_\_ 20 - 21  
 PAVEMENT MARKING SUMMARY \_\_\_\_\_ 22 - 23

**REVISIONS**

DATE	ITEM
1/31/2017	SHEET 15 AND 16 - REVISED SHOULDER MATERIAL
	SHEET 17 AND 18 - REVISED TREATMENT TYPE
	SHEET 19 - REVISED QUANTITIES



<b>CONSTRUCTION PLANS INDEX</b>	DESIGNED BY:	SCALE	CONTRACT NO.	Date Approved: 11/16/16  <i>Matthew S. Larrabee</i> Approved By:
	MSL	N/A	RS-39160	
	DRAWN BY:	STATE	COUNTY	
	PFC	INDIANA	HAMILTON/ MADISON	
CHECKED BY:	DES. NO.	DISTRICT		
	1592866 & 1593203	GREENFIELD		

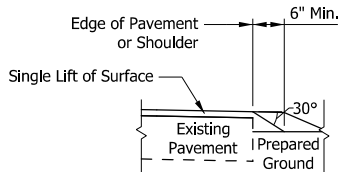


\* - If paved as part of mainline, joint adhesive and sealant not required. Only to be used with QC/QA HMA.

**PROPOSED TYPICAL SECTION**

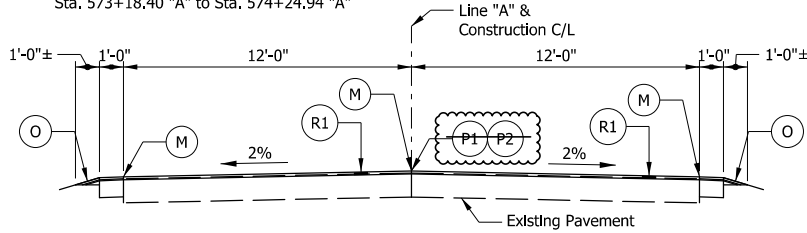
Scale: 1/8" = 1'-0"  
 Sta. 10+00.00 "A" to Sta. 61+62.25 "A"  
 Sta. 82+50.75 "A" to Sta. 161+96.00 "A"  
 Sta. 184+52.10 "A" to Sta. 373+50.00 "A"  
 Sta. 573+18.40 "A" to Sta. 574+24.94 "A"

# Shoulder is 8'-0" from Sta. 82+50.75 "A" to Sta. 132+00.00 "A"



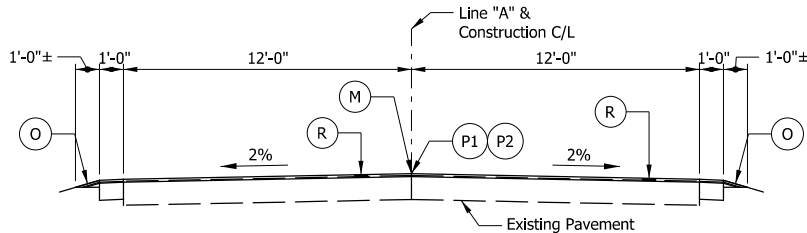
**SAFETY EDGE DETAIL**

Scale: 1/4" = 1'-0"



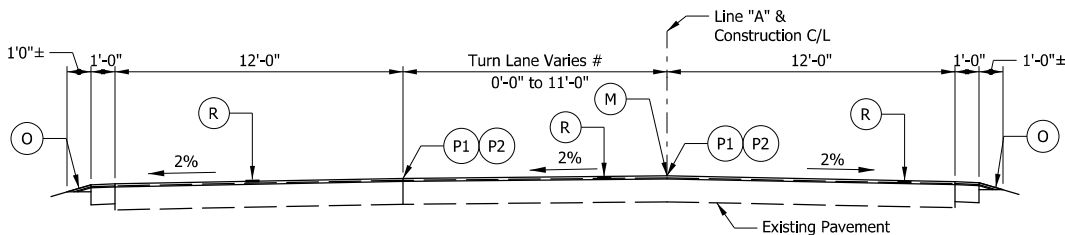
**PROPOSED TYPICAL SECTION**

Scale: 1/8" = 1'-0"  
 Sta. 161+96.00 "A" to Sta. 184+52.10 "A"



**PROPOSED TYPICAL SECTION**

Scale: 1/8" = 1'-0"  
 Sta. 373+50.00 "A" to Sta. 529+40.00 "A"  
 Sta. 536+72.00 "A" to Sta. 573+18.40 "A"



**PROPOSED TYPICAL SECTION**

Scale: 1/8" = 1'-0"  
 Sta. 529+40.00 "A" to Sta. 536+72.00 "A"

# Varies from 0'-0" at Sta. 531+66.30 "A" to 11'-0" at Sta. 533+00.00 "A"  
 11'-0" Sta. 533+00.00 "A" to Sta. 535+00.00 "A"  
 Varies from 0'-0" at Sta. 535+00.00 "A" to 11'-0" at Sta. 536+72.00 "A"

**PAVING EXCEPTIONS\***

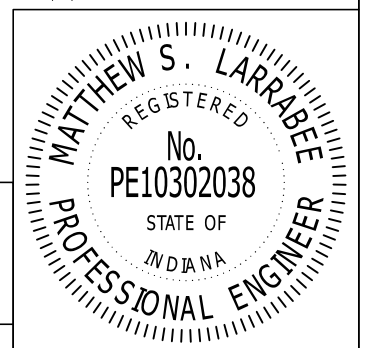
- 1 Sta. 61+62.25 "A" to Sta. 63+96.04 "A"
- 2 Sta. 92+90.80 "A" to Sta. 94+24.91 "A"
- 3 Sta. 357+03.40 "A" to Sta. 357+55.56 "A"
- 4 Sta. 527+76.90 "A" to Sta. 528+16.14 "A"

\* Stations of paving exception limits are approximate.

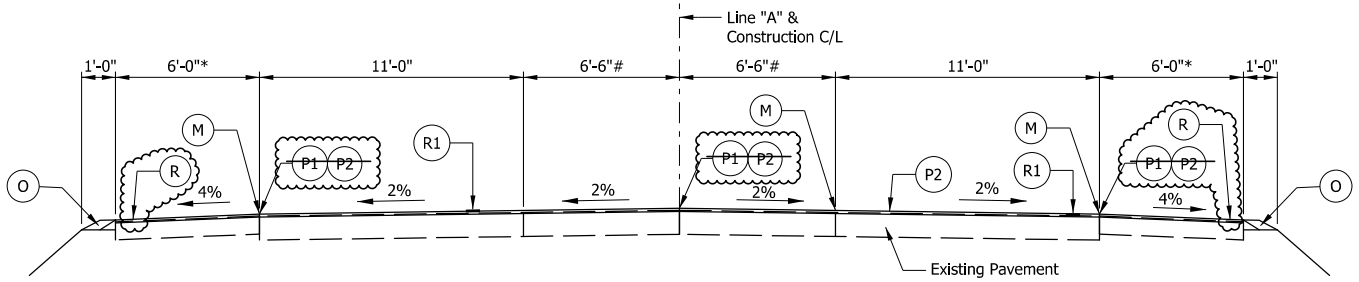
**LEGEND**

- (R) 165 #/sys QC/QA HMA, 3, 70, Surface, 9.5mm on Milling, Asphalt, 1 1/2" (edge of shoulder to edge of shoulder)
- (R1) 75 #/sys Ultra-thin Bonded Wearing Course, 9.5mm on Milling/Scarification (edge of shoulder to edge of shoulder)
- (O) Compacted Aggregate No. 53
- (P1) Joint Adhesive Required for Surface Layers at Longitudinal Joints
- (P2) Liquid Asphalt Sealant Required on Surface Layer over Longitudinal Joint, 24" Width
- (M) Milled HMA Corrugations

REV. 1/31/2107 - REVISED SHOULDER MATERIAL



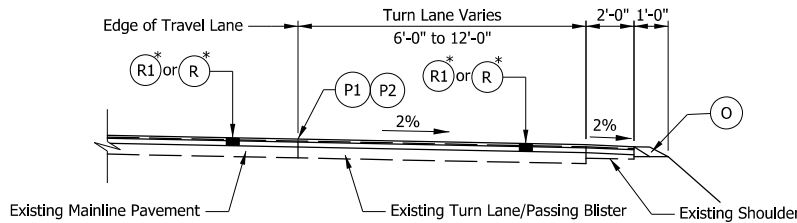
<b>TYPICAL CROSS SECTIONS</b>	DESIGNED BY:	SCALE	CONTRACT NO.	Date Approved: 11/16/16  <i>Matthew Larrabee</i> Approved By:
	MSL	AS NOTED	RS-39160	
	DRAWN BY:	STATE	COUNTY	
	AM	INDIANA	HAMILTON/MADISON DISTRICT	
CHECKED BY:	DES. NO.	DISTRICT		
MSL	1592866 & 1593203	GREENFIELD		



**PROPOSED TYPICAL SECTION**

Sta. 63+96.04 to 82+50.75

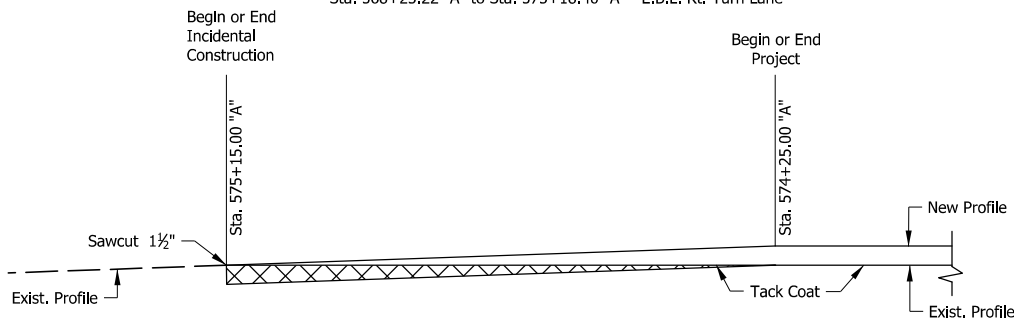
# Varies from 0' at Sta. 63+96.04 "A" to 6'-6" at Sta. 69+65.35 "A"  
 Center Lane is 6'-6" from Sta. 69+65.35 "A" to Sta. 79+34.61 "A"  
 Varies from 6'-6" at Sta. 79+34.61 "A" to 0'-0" at Sta. 82+50.75 "A"  
 \* Shoulder is 6'-0" from Sta. 63+96.04 "A" to Sta. 65+76.66 "A"  
 Varies from 2'-0" at Sta. 65+76.66 "A" to 4'-0" at Sta. 69+23.93 "A"  
 Shoulder is 6'-0" from Sta. 69+23.93 "A" to Sta. 82+50.75 "A"



**TYPICAL TURN LANE SECTION**

Sta. 35+21.90 "A" to Sta. 40+26.40 "A" - W.B.L. Passing Blister  
 Sta. 35+42.60 "A" to Sta. 39+58.28 "A" - E.B.L. Rt. Turn Lane  
 Sta. 69+65.35 "A" to Sta. 72+86.28 "A" - E.B.L. Rt. Turn Lane  
 Sta. 139+14.70 "A" to Sta. 142+42.10 "A" - W.B.L. Rt. Turn Lane  
 Sta. 207+32.00 "A" to Sta. 210+00.00 "A" - W.B.L. Rt. Turn Lane  
 Sta. 262+33.00 "A" to Sta. 265+31.35 "A" - W.B.L. Rt. Turn Lane  
 Sta. 511+18.00 "A" to Sta. 518+73.82 "A" - W.B.L. Rt. Turn Lane  
 Sta. 531+62.56 "A" to Sta. 536+38.50 "A" - W.B.L. Rt. Turn Lane  
 Sta. 565+84.14 "A" to Sta. 573+18.40 "A" - W.B.L. Rt. Turn Lane  
 Sta. 568+23.22 "A" to Sta. 573+18.40 "A" - E.B.L. Rt. Turn Lane

\* (R1) to be used Prior to Sta. 373+50 and to be used after (R).  
 (P1) and (P1) not used with (R1)



**ASPHALT MILLING TRANSITION DETAIL**

Sta. 574+25.00 "A" to 575+15.00 "A"

**LEGEND**

- (R) 165 #/sys QC/QA HMA, 3, 70, Surface, 9.5mm on Milling, Asphalt, 1 1/2" (edge of shoulder to edge of shoulder)
- (R1) 75 #/sys Ultra-thin Bonded Wearing Course, 9.5mm on Milling/Scarification (edge of shoulder to edge of shoulder)
- (O) Compacted Aggregate No. 53
- (P1) Joint Adhesive Required for Surface Layers at Longitudinal Joints
- (P2) Liquid Asphalt Sealant Required on Surface Layer over Longitudinal Joint, 24" Width
- (M) Milled HMA Corrugations

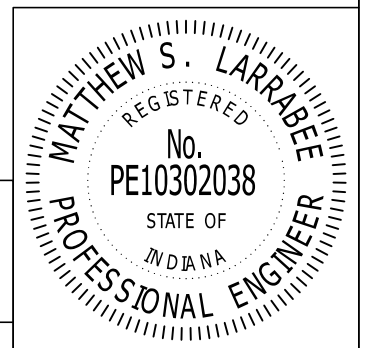
REV. 1/31/2107 - REVISED SHOULDER MATERIAL

**TYPICAL CROSS SECTIONS**

DESIGNED BY:	SCALE	CONTRACT NO.
MSL	1/8"=1'-0"	RS-39160
DRAWN BY:	STATE	COUNTY
AM	INDIANA	HAMILTON/MADISON
CHECKED BY:	DES. NO.	DISTRICT
MSL	1592866 & 1593203	GREENFIELD

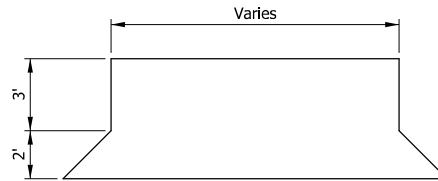
Date Approved: 11/16/16

*Matthew S. Larrabee*  
 Approved By:



PUBLIC ROAD AND APPROACH SUMMARY TABLE								
Station	Side	Road Name / Home Address	Existing Road Condition	Treatment Type	Width at Travel Lane (ft)	Width at Radii / Taper (ft)	Length (along appr.) (ft)	Area (sys)
17+90	Rt	Stony Lane		UBWC PM	85	24	40	242
21+80	Lt			UBWC PM	35	24	6	20
28+65	Lt			UBWC PM	42	24	6	22
37+33	Rt	Estates Blvd.		UBWC PM	100	54	24	205
39+94	Lt			UBWC PM	28	14	6	14
44+80	Lt	Deshane Ave.		UBWC PM	56	18	30	123
45+72	Rt			UBWC PM	32	15	6	16
50+10	Rt			UBWC PM	26	14	6	13
71+31	Rt	Long Creek Dr.		UBWC PM	105	48	36	306
85+44	Lt			UBWC PM	50	26	6	25
85+68	Lt			UBWC PM	40	22	6	21
89+27	Lt			UBWC PM	40	22	6	21
91+40	Lt			UBWC PM	80	58	6	46
98+54	Lt			UBWC PM	70	38	6	36
99+27	Lt			UBWC PM	70	38	6	36
101+75	Rt	Boden Rd.		PM	80	24	72	416
101+75	Lt	Middletown Ave.		UBWC PM	62	34	20	107
106+50	Lt			UBWC PM	40	22	6	21
118+54	Lt			UBWC PM	34	16	6	17
123+87	Lt			UBWC PM	32	16	6	16
124+21	Lt			UBWC PM	32	16	6	16
135+83	Lt			UBWC PM	24	14	6	13
139+55	Rt			UBWC PM	55	25	6	27
140+60	Lt	Mystic Rd.		UBWC PM	36	20	15	47
149+53	Rt			UBWC PM	30	18	6	16
150+82	Lt			UBWC PM	36	20	6	19
153+38	Rt			UBWC PM	44	30	6	25
154+06	Rt	Olio Rd.		UBWC PM	58	20	28	121
161+98	Rt			UBWC PM	26	14	6	13
162+10	Lt			UBWC PM	34	18	6	17
163+70	Rt			UBWC PM	36	20	6	19
168+94	Lt			UBWC PM	22	12	6	11
169+01	Rt			UBWC PM	28	18	6	15
169+66	Lt			UBWC PM	36	22	6	19
170+98	Lt	Lehr Street		UBWC PM	38	14	16	46
170+98	Rt	Lehr Street		UBWC PM	38	14	16	46
171+80	Rt			UBWC PM	30	20	6	17
172+90	Rt			UBWC PM	30	24	6	18
172+94	Lt			UBWC PM	24	14	6	13
173+84	Rt			UBWC PM	108	98	6	69
174+84	Lt	Mason Street		UBWC PM	32	14	15	38
174+84	Rt	Mason Street		UBWC PM	38	14	22	64
175+86	Rt			UBWC PM	46	46	6	31
176+80	Lt			UBWC PM	24	10	6	11
177+88	Lt			UBWC PM	28	20	6	16
178+71	Rt	E 143rd		UBWC PM	54	24	15	65
178+71	Rt	E 143rd		UBWC PM	42	18	15	50
182+40	Lt			UBWC PM	40	24	6	21
189+02	Lt			UBWC PM	30	18	6	16
191+38	Lt			UBWC PM	38	26	6	21
191+55	Rt			UBWC PM	32	18	6	17
201+89	Rt			UBWC PM	28	14	6	14
208+47	Lt	Prairie Baptist Rd.		UBWC PM	46	18	20	71
208+47	Rt	Prairie Baptist Rd.		UBWC PM	38	18	20	62
222+26	Lt			UBWC PM	30	16	6	15
224+98	Lt			UBWC PM	45	26	6	24

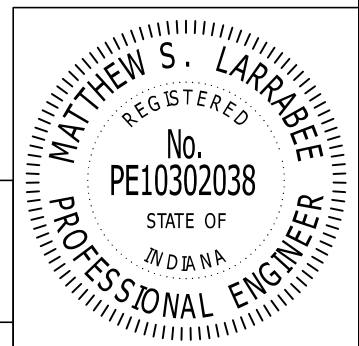
PUBLIC ROAD AND APPROACH SUMMARY TABLE								
Station	Side	Road Name / Home Address	Existing Road Condition	Treatment Type	Width at Travel Lane (ft)	Width at Radii / Taper (ft)	Length (along appr.) (ft)	Area (sys)
225+87	Lt			UBWC PM	28	12	6	13
229+38	Lt			UBWC PM	40	28	6	23
236+22	Lt			UBWC PM	85	74	6	53
243+83	Rt			UBWC PM	34	22	6	19
250+80	Rt			UBWC PM	34	24	6	19
251+85	Lt			UBWC PM	32	18	6	17
263+62	Lt	Cyntheanne Rd.		UBWC PM	54	18	30	120
263+62	Rt	Cyntheanne Rd.		UBWC PM	44	18	30	103
267+51	Lt			UBWC PM	32	16	6	16
273+20	Lt			UBWC PM	64	42	6	35
274+18	Lt			UBWC PM	64	46	6	37
277+27	Rt			UBWC PM	24	16	6	13
277+81	Rt			UBWC PM	34	24	6	19
290+82	Lt			UBWC PM	28	16	6	15
290+96	Rt			UBWC PM	28	18	6	15
291+86	Rt			UBWC PM	28	18	6	15
292+28	Lt			UBWC PM	26	16	6	14
293+12	Lt			UBWC PM	24	18	6	14
293+29	Rt			UBWC PM	24	16	6	13
294+56	Rt			UBWC PM	30	20	6	17
296+16	Rt			UBWC PM	24	16	6	13
297+00	Lt			UBWC PM	26	18	6	15
297+15	Rt			UBWC PM	28	20	6	16
298+85	Rt			UBWC PM	32	22	6	18
298+90	Lt			UBWC PM	28	18	6	15
300+70	Rt			UBWC PM	40	28	6	23
302+52	Rt			UBWC PM	30	22	6	17
306+24	Lt			UBWC PM	28	22	6	17
307+89	Rt			UBWC PM	36	24	6	20
308+57	Rt			UBWC PM	36	24	6	20
312+36	Lt			UBWC PM	36	24	6	20
313+20	Rt			UBWC PM	40	28	6	23
316+02	Lt			UBWC PM	36	24	6	20
317+01	Rt			UBWC PM	32	24	6	19
318+53	Lt	CR 168		UBWC PM	56	18	25	103
318+53	Rt	CR 168		UBWC PM	56	18	25	103
339+67	Rt			UBWC PM	28	18	6	15
344+47	Lt			UBWC PM	32	20	6	17
348+51	Rt			UBWC PM	30	20	6	17
355+03	Lt			UBWC PM	32	20	6	17
355+66	Rt			UBWC PM	34	18	6	17
355+68	Lt			UBWC PM	22	14	6	12
359+11	Lt			UBWC PM	32	20	6	17
362+27	Lt			UBWC PM	34	24	6	19
363+14	Lt			UBWC PM	20	15	6	12
364+61	Lt			UBWC PM	26	18	6	15
365+58	Lt			UBWC PM	30	20	6	17
370+75	Lt			UBWC PM	34	22	6	19
371+35	Lt			UBWC PM	34	24	6	19
372+65	Lt			UBWC PM	44	34	6	26
373+43	Lt	SR 13		UBWC PM	50	24	25	103
373+43	Rt	SR 13		UBWC PM	50	24	25	103
387+06	Rt	CR 875 W		PM	50	18	25	94
400+35	Lt			PM	68	50	6	39
413+96	Rt			PM	22	12	6	11
419+40	Lt			PM	42	26	6	23



**TYPICAL APPROACH**  
 Sta. ~~xxx+xxx~~ "A" to Sta. ~~xxx+xxx~~ "A"  
 10+00.00                      524+25.00

\* Boden Road      165 #/sys QC/QA HMA, 3, 70, Surface, 9.5mm on  
 165 #/sys QC/QA HMA, 3, 70, Surface, 9.5mm on  
 Milling, Asphalt, 3" Approach (Depth 5 in.)

REV. 1/31/2107 - REVISED TREATMENT TYPE



<b>APPROACH SUMMARY</b>	DESIGNED BY:	SCALE	CONTRACT NO.	Date Approved: 11/16/16  <i>Matthew Larrabee</i> Approved By:
	MSL	N/A	RS-39160	
	DRAWN BY:	STATE	COUNTY	
	AM	INDIANA	HAMILTON/MADISON	
CHECKED BY:	DES. NO.	DISTRICT		
MSL	1592866 & 1593203	GREENFIELD		

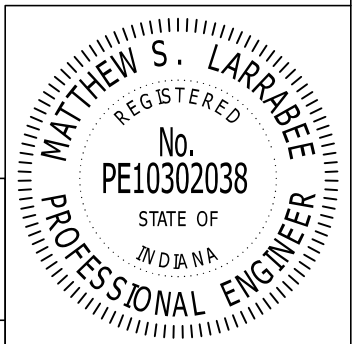


RESURFACING & MILLING SUMMARY TABLE

Station	Widths (feet)						Type of Treat.	Areas (sys)			Milling (sys)				Joint Adhesive		Liq. Asph.	Milled HMA	Description / Comments
	Left Shoulder		Mainline	Right Shoulder		Mainline		Shoulder		Asphalt 4.0in.	Asphalt 1.5in.	Transition Scarificat.	Scarification	Surface (ft)	Intermed. (ft)	Sealant (ft)	Corrug. (ft)		
	Agg.	HMA		Agg.	HMA			HMA	Agg.										
10+00																			
35+15	2	6	24	2	6	UBWC	6707	3353	1118		3353	6707	10060	2515		2515	7545		
36+50	2	2	48	2	2	UBWC	540	120	60		120	540	660	405		405	405	Turn Lane Transitions	
38+45	2	6	48	2	6	UBWC	1040	173	87		173	1040	1213	585		585	585	Turn Lane and Passing Blister	
40+15	2	6	24	2	6	UBWC	680	227	76		227	680	907	170		170	510	Turn Lane Transitions	
61+60	2	6	24	2	6	UBWC	5720	2860	953		2860	5720	8580	2145		2145	6435		
63+95			24															Paving Exception	
67+50	2	2	36	2	2	UBWC	1183	316	158		316	1183	1499	710		710	1065	Transitions	
69+65	2	6	36	2	6	UBWC	860	191	96		191	860	1051	430		430	645	Crosshatch Center Lane	
70+65	2	6	48	2	2	UBWC	467	111	44		111	467	578	300		300	300	Turn Lane Transition	
71+95	2	6	48	2	2	UBWC	693	116	58		116	693	809	390		390	390	Turn Lane	
72+95	2	6	36	2	6	UBWC	467	111	44		111	467	578	200		200	300	Turn Lane Transition	
78+95	2	6	36	2	6	UBWC	2400	800	267		800	2400	3200	1200		1200	1800	Turn Lane	
82+45	2	6	24	2	6	UBWC	1167	467	156		467	1167	1634	350		350	1050	Turn Lane Transition	
92+90	2	6	24	2	6	UBWC	2787	1393	464		1393	2787	4180	1045		1045	3135		
94+25			24															Paving Exception	
139+00	2	6	24	2	6	UBWC	11933	5967	1989		5967	11933	17900	4475		4475	13425		
140+40	2	2	36	2	6	UBWC	467	156	62		156	467	623	280		280	420	Turn Lane Transition	
141+55	2	2	36	2	6	UBWC	460	102	51		102	460	562	230		230	345	Turn Lane	
142+35	2	6	24	2	6	UBWC	267	89	36		89	267	356	80		80	240	Turn Lane Transition	
162+15	2	6	24	2	6	UBWC	5280	2640	880		2640	5280	7920	1980		1980	5505	CLELRS end at Sta. 160+70	
185+30	2	2	24	2	2	UBWC	6173	2058	1029		2058	6173	8231	2315		2315	5925	2' Shoulder through Clarksville - CLELRS begin at Sta. 187+50	
207+25	2	6	24	2	6	UBWC	5853	1951	976		1951	5853	7804	2195		2195	6585		
208+20	2	2	36	2	6	UBWC	317	106	42		106	317	423	190		190	285	Turn Lane Transition	
209+45	2	2	36	2	6	UBWC	500	111	56		111	500	611	250		250	375	Turn Lane	
210+05	2	6	24	2	6	UBWC	200	67	27		67	200	267	60		60	180	Turn Lane Transition	
262+25	2	6	24	2	6	UBWC	13920	5960	2320		5960	13920	20880	5220		5220	15660		
263+30	2	2	36	2	6	UBWC	350	117	47		117	350	467	210		210	315	Turn Lane Transition	
264+75	2	2	36	2	6	UBWC	580	129	64		129	580	709	290		290	435	Turn Lane	
265+45	2	6	24	2	6	UBWC	233	78	31		78	233	311	70		70	210	Turn Lane Transition	
356+90	2	6	24	2	6	UBWC	24387	12193	4064		12193	24387	36580	9145		9145	27435		
357+45			24															Paving Exception	
373+35	2	6	24	2	6	UBWC	4240	2120	707		2120	4240	6360	1590		1590	4770	SR 13 Intersection	
511+00	1	1	24	1	1	PM	36707	10706	3059		47413			13765		13765			
512+65	1	1	36	1	1	PM	550	37	37		587			330		330		Turn Lane Transition	
517+55	1	1	36	1	1	PM	1960	109	109		2069			980		980		Turn Lane	
518+70	1	1	24	1	1	PM	383	26	26		409			115		115		Turn Lane Transition	
527+65	1	1	24	1	1	PM	2387	199	199		2586			895		895			
528+05			24															Paving Exception	
530+40	1	1	24	1	1	PM	627	52	52		679			235		235			
533+15	1	1	48	1	1	PM	1100	61	61		1161			825		825		Turn Lane and Transitions	
535+50	1	1	48	1	1	PM	1253	52	52		1305			705		705		Turn Lane	
537+35	1	1	24	1	1	PM	740	41	41		781			185		185		Turn Lane Transitions	
565+65	1	1	24	1	1	PM	7547	629	629		8176			2830		2830			
567+15	1	1	36	1	1	PM	500	33	33		533			300		300		Turn Lane Transitions	
568+40	1	1	36	1	1	PM	500	28	28		528			250		250		Turn Lane	
570+25	1	1	48	1	1	PM	863	41	41		904			555		555		Turn Lane and Transitions	
571+90	1	1	48	1	1	PM	880	37	37		917			495		495		Turn Lanes	
573+15	1	10	36	1	1	PM	583	90	28		673			375		375		Turn Lane and Transitions	
575+05	1	10	36	1	1	PM	760	232	42		992			570		570			

QUANTITY SUMMARY													
Mainline		Shoulder		Asphalt for Tack Coat	Comp. Agg. No. 53	Milling				Joint Adhesive		Liquid Asphalt Sealant	Milled HMA Corrug.
QC/QA-HMA	Surface	QC/QA-HMA	Surface			Asphalt 4.0"	Asphalt 1.5"	Transition	Scarification	Surface	Intermed.		
9.5mm	165#/sys	9.5mm	165#/sys	(ton)	(ton)	(sys)	(sys)	(sys)	(sys)	(ft)	(ft)	(ft)	(ft)
99241	4731	49082	1021	17.4	3413	69713	144953	62435	62435	62435	62435	106275	
0		4740		28.7		114795	99871	23410	23410				

REV. 1/31/2107 - REVISED QUANTITIES



<b>RESURFACING &amp; MILLING SUMMARY</b>	DESIGNED BY:	SCALE	CONTRACT NO.	Date Approved: 11/16/16  <i>Matthew Larrabee</i> Approved By:
	MSL	N/A	RS-39160	
	DRAWN BY:	STATE	COUNTY	
	AM	INDIANA	HAMILTON/MADISON DISTRICT	
CHECKED BY:	DES. NO.	DISTRICT		
MSL	1592866 & 1593203	GREENFIELD		