
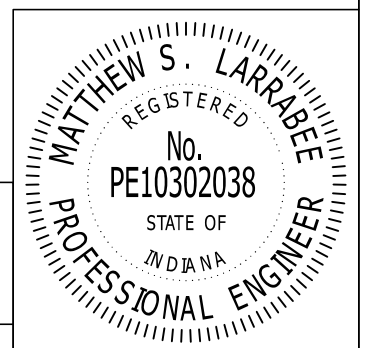


S.R. 38 PREVENTATIVE MAINTENANCE WITH HMA OVERLAY
FROM S.R. 32 TO I-69
IN HAMILTON COUNTY & MADISON COUNTY, IN

TITLE _____ 1
 CONSTRUCTION PLANS INDEX _____ 2
 STRIP MAP _____ 3 - 14
 TYPICAL CROSS SECTIONS _____ 15 - 16
 PUBLIC ROAD & APPROACH SUMMARY _____ 17 - 18
 RESURFACING & MILLING SUMMARY _____ 19
 PATCHING SUMMARY _____ 20 - 21
 PAVEMENT MARKING SUMMARY _____ 22 - 23

CONSTRUCTION PLANS INDEX	DESIGNED BY:	SCALE	CONTRACT NO.	Date Approved: 11/16/16  Approved By:
	MSL	N/A	RS-39160	
	DRAWN BY:	STATE	COUNTY	
	PFC	INDIANA	HAMILTON/ MADISON	
CHECKED BY:	DES. NO.	DISTRICT		
	1592866 & 1593203	GREENFIELD		





MATCH LINE - STA. 54+69 "A"

LEGEND

- ① Road Construction Ahead
- ② End Construction
- ③ Worksite Added Penalty
- ④ Road Construction Next 11 Miles

* Contractor to utilize flagging operations during construction.

TT Sign Assembly

STRIP MAP

DESIGNED BY:	SCALE	CONTRACT NO.
PFC	1" = 500'	RS-38673
DRAWN BY:	STATE	COUNTY
PFC	INDIANA	HAMILTON/ MADISON
CHECKED BY:	DES. NO.	DISTRICT
MSL	1592866	GREENFIELD

Date Approved: 11/16/16

Approved By: *Matthew S. Larrabee*





CURVE DATA
 P.I. STA. 82+95.77 "A"
 $\Delta = 11^\circ 17' 39''$ (RT)
 R = 4,800.00'
 T = 474.63'
 L = 946.18'
 E = 23.41'

MATCH LINE - STA. 54+69 "A"

MATCH LINE - STA. 104+26 "A"

LEGEND

- ① Road Construction Ahead
- ② End Construction
- ③ Worksite Added Penalty
- ④ Road Construction Next 11 Miles

* Contractor to utilize flagging operations during construction.

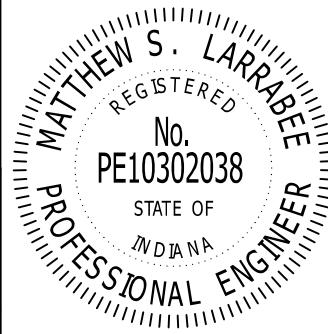
TT Sign Assembly

STRIP MAP

DESIGNED BY:	SCALE	CONTRACT NO.
PFC	1" = 500'	RS-38673
DRAWN BY:	STATE	COUNTY
PFC	INDIANA	HAMILTON/ MADISON
CHECKED BY:	DES. NO.	DISTRICT
MSL	1592866	GREENFIELD

Date Approved: 11/16/16

Approved By: *Matthew S. Larrabee*





MATCH LINE - STA. 104+26 "A"

MATCH LINE - STA. 152+39 "A"

LEGEND

- ① Road Construction Ahead
- ② End Construction
- ③ Worksite Added Penalty
- ④ Road Construction Next 11 Miles

* Contractor to utilize flagging operations during construction.

TT Sign Assembly

STRIP MAP

DESIGNED BY:	SCALE	CONTRACT NO.
PFC	1" = 500'	RS-38673
DRAWN BY:	STATE	COUNTY
PFC	INDIANA	HAMILTON/ MADISON
CHECKED BY:	DES. NO.	DISTRICT
MSL	1592866	GREENFIELD

Date Approved: 11/16/16

Approved By: *Matthew S. Larrabee*





MATCH LINE - STA. 152+39 "A"

MATCH LINE - STA. 200+72 "A"

LEGEND

- ① Road Construction Ahead
- ② End Construction
- ③ Worksite Added Penalty
- ④ Road Construction Next 11 Miles

* Contractor to utilize flagging operations during construction.

TT Sign Assembly

STRIP MAP

DESIGNED BY: PFC	SCALE 1" = 500'	CONTRACT NO. RS-38673
DRAWN BY: PFC	STATE INDIANA	COUNTY HAMILTON/ MADISON
CHECKED BY: MSL	DES. NO. 1592866	DISTRICT GREENFIELD

Date Approved: 11/16/16

Approved By: *Matthew S. Larrabee*





MATCH LINE - STA. 200+72 "A"

MATCH LINE - STA. 249+12 "A"

LEGEND

- (1) Road Construction Ahead
 - (2) End Construction
 - (3) Worksite Added Penalty
 - (4) Road Construction Next 11 Miles
- * Contractor to utilize flagging operations during construction.

TT Sign Assembly

STRIP MAP

DESIGNED BY:	SCALE	CONTRACT NO.
PFC	1" = 500'	RS-38673
DRAWN BY:	STATE	COUNTY
PFC	INDIANA	HAMILTON/ MADISON
CHECKED BY:	DES. NO.	DISTRICT
MSL	1592866	GREENFIELD

Date Approved: 11/16/16

Approved By: *Matthew S. Larrabee*





MATCH LINE - STA. 249+12 "A"

MATCH LINE - STA. 297+41 "A"

LEGEND

- ① Road Construction Ahead
- ② End Construction
- ③ Worksite Added Penalty
- ④ Road Construction Next 11 Miles

* Contractor to utilize flagging operations during construction.

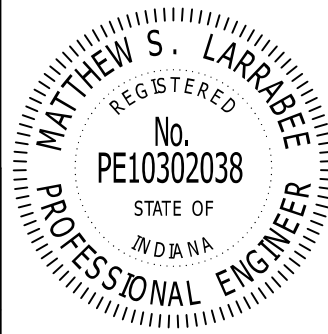
TT Sign Assembly

STRIP MAP

DESIGNED BY: PFC	SCALE 1"= 500'	CONTRACT NO. RS-38673
DRAWN BY: PFC	STATE INDIANA	COUNTY HAMILTON/ MADISON
CHECKED BY: MSL	DES. NO. 1592866	DISTRICT GREENFIELD

Date Approved: 11/16/16

Approved By: *Matthew S. Larrabee*





MATCH LINE - STA. 297+41 "A"

MATCH LINE - STA. 345+63 "A"

LEGEND

- ① Road Construction Ahead
- ② End Construction
- ③ Worksite Added Penalty
- ④ Road Construction Next 11 Miles

* Contractor to utilize flagging operations during construction.

TT Sign Assembly

STRIP MAP

	DESIGNED BY:	SCALE	CONTRACT NO.
	PFC	1" = 500'	RS-38673
	DRAWN BY:	STATE	COUNTY
	PFC	INDIANA	HAMILTON/ MADISON
	CHECKED BY:	DES. NO.	DISTRICT
	MSL	1592866	GREENFIELD

Date Approved: 11/16/16

Approved By: *Matthew S. Larrabee*





MATCH LINE - STA. 345+63 "A"

MATCH LINE - STA. 393+95 "A"

LEGEND

- ① Road Construction Ahead
- ② End Construction
- ③ Worksite Added Penalty
- ④ Road Construction Next 11 Miles

* Contractor to utilize flagging operations during construction.

TT Sign Assembly

STRIP MAP

DESIGNED BY: PFC	SCALE 1" = 500'	CONTRACT NO. RS-38673
DRAWN BY: PFC	STATE INDIANA	COUNTY HAMILTON/ MADISON
CHECKED BY: MSL	DES. NO. 1592866 & 1593203	DISTRICT GREENFIELD

Date Approved: 11/16/16

Approved By: *Matthew S. Larrabee*





LEGEND

- ① Road Construction Ahead
- ② End Construction
- ③ Worksite Added Penalty
- ④ Road Construction Next 11 Miles

* Contractor to utilize flagging operations during construction.

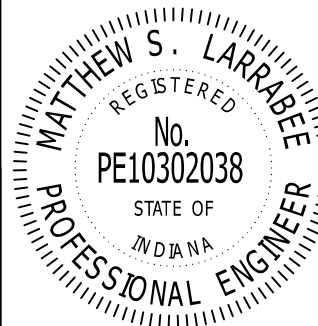
TT Sign Assembly

STRIP MAP

DESIGNED BY:	SCALE	CONTRACT NO.
PFC	1" = 500'	RS-38673
DRAWN BY:	STATE	COUNTY
PFC	INDIANA	HAMILTON/ MADISON
CHECKED BY:	DES. NO.	DISTRICT
MSL	1593203	GREENFIELD

Date Approved: 11/16/16

Approved By: *Matthew S. Larrabee*





MATCH LINE - STA. 442+55 "A"

MATCH LINE - STA. 492+42 "A"

LEGEND

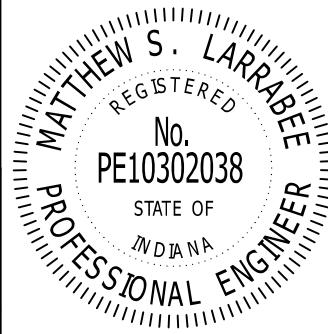
- ① Road Construction Ahead
 - ② End Construction
 - ③ Worksite Added Penalty
 - ④ Road Construction Next 11 Miles
- * Contractor to utilize flagging operations during construction.

TT Sign Assembly

STRIP MAP	DESIGNED BY:	SCALE	CONTRACT NO.
	PFC	1" = 500'	RS-38673
	DRAWN BY:	STATE	COUNTY
	PFC	INDIANA	HAMILTON/ MADISON
	CHECKED BY:	DES. NO.	DISTRICT
	MSL	1593203	GREENFIELD

Date Approved: 11/16/16

Matthew Larrabee
 Approved By:





CURVE DATA
 P.I. STA. 498+37.42 "A"
 $\Delta = 25^\circ 50' 33''$ (LT)
 R = 650.00'
 T = 149.12'
 L = 293.17'
 E = 16.89'

CURVE DATA
 P.I. STA. 506+04.86 "A"
 $\Delta = 2^\circ 24' 42''$ (LT)
 R = 10,500.00'
 T = 221.02'
 L = 441.98'
 E = 2.33'

CURVE DATA
 P.I. STA. 536+19.53 "A"
 $\Delta = 39^\circ 04' 49''$ (RT)
 R = 520.00'
 T = 184.55'
 L = 354.68'
 E = 31.78'

MATCH LINE - STA. 492+42 "A"

MATCH LINE - STA. 541+16 "A"

LEGEND

- ① Road Construction Ahead
- ② End Construction
- ③ Worksite Added Penalty
- ④ Road Construction Next 11 Miles

* Contractor to utilize flagging operations during construction.

TT Sign Assembly

STRIP MAP

DESIGNED BY:	SCALE	CONTRACT NO.
PFC	1" = 500'	RS-38673
DRAWN BY:	STATE	COUNTY
PFC	INDIANA	HAMILTON/ MADISON
CHECKED BY:	DES. NO.	DISTRICT
MSL	1593203	GREENFIELD

Date Approved: 11/16/16

Approved By: *Matthew S. Larrabee*





MATCH LINE - STA. 541+16 "A"

CURVE DATA
 P.I. STA. 554+15.45 "A"
 $\alpha = 27^\circ 36' 57''$ (LT)
 R = 600.00'
 T = 147.46'
 L = 289.19'
 E = 17.86'

CURVE DATA
 P.I. STA. 570+79.76 "A"
 $\alpha = 8^\circ 36' 54''$ (LT)
 R = 4,600.00'
 T = 346.48'
 L = 691.66'
 E = 13.03'

LEGEND

① Road Construction Ahead ③ Worksite Added Penalty * Contractor to utilize flagging operations during construction.

② End Construction ④ Road Construction Next 11 Miles

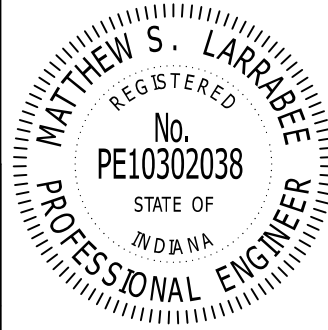
TT Sign Assembly

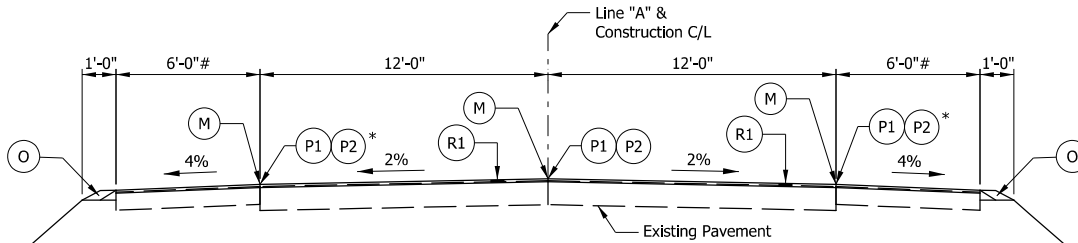
STRIP MAP

DESIGNED BY:	SCALE	CONTRACT NO.
PFC	1" = 500'	RS-38673
DRAWN BY:	STATE	COUNTY
PFC	INDIANA	HAMILTON/ MADISON
CHECKED BY:	DES. NO.	DISTRICT
MSL	1593203	GREENFIELD

Date Approved: 11/16/16

Approved By: *Matthew S. Larrabee*



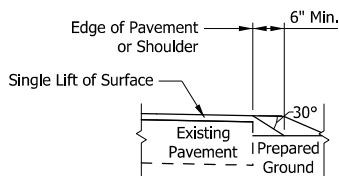


* - If paved as part of mainline, joint adhesive and sealant not required.

PROPOSED TYPICAL SECTION

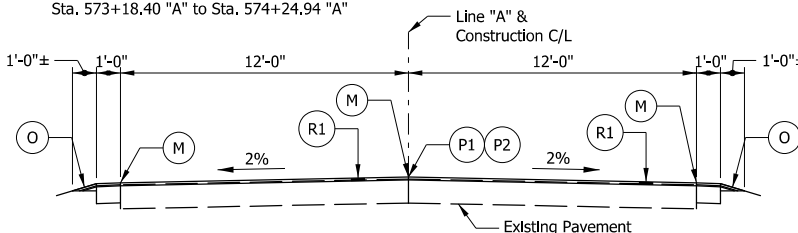
Scale: 1/8" = 1'-0"
 Sta. 10+00.00 "A" to Sta. 61+62.25 "A"
 Sta. 82+50.75 "A" to Sta. 161+96.00 "A"
 Sta. 184+52.10 "A" to Sta. 373+50.00 "A"
 Sta. 573+18.40 "A" to Sta. 574+24.94 "A"

Shoulder is 8'-0" from Sta. 82+50.75 "A" to Sta. 132+00.00 "A"



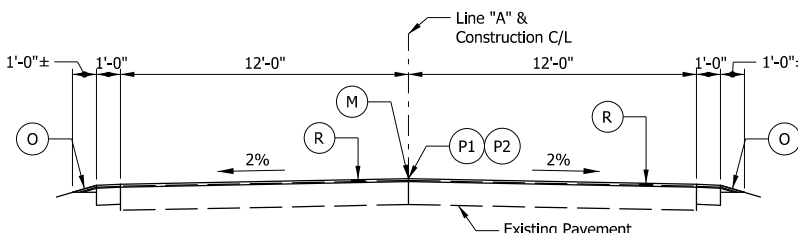
SAFETY EDGE DETAIL

Scale: 1/4" = 1'-0"



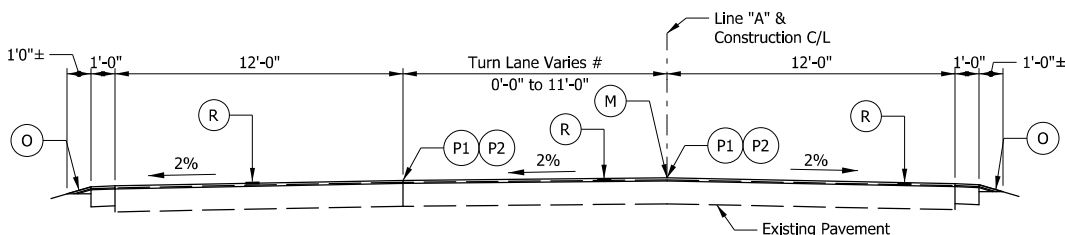
PROPOSED TYPICAL SECTION

Scale: 1/8" = 1'-0"
 Sta. 161+96.00 "A" to Sta. 184+52.10 "A"



PROPOSED TYPICAL SECTION

Scale: 1/8" = 1'-0"
 Sta. 373+50.00 "A" to Sta. 529+40.00 "A"
 Sta. 536+72.00 "A" to Sta. 573+18.40 "A"



PROPOSED TYPICAL SECTION

Scale: 1/8" = 1'-0"
 Sta. 529+40.00 "A" to Sta. 536+72.00 "A"

Varies from 0'-0" at Sta. 531+66.30 "A" to 11'-0" at Sta. 533+00.00 "A"
 11'-0" Sta. 533+00.00 "A" to Sta. 535+00.00 "A"
 Varies from 0'-0" at Sta. 535+00.00 "A" to 11'-0" at Sta. 536+72.00 "A"

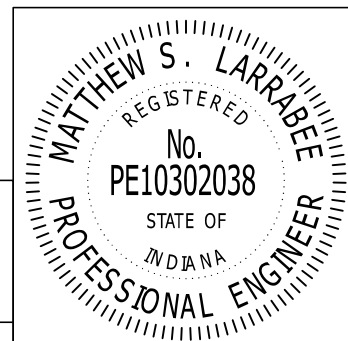
PAVING EXCEPTIONS *

- 1 Sta. 61+62.25 "A" to Sta. 63+96.04 "A"
- 2 Sta. 92+90.80 "A" to Sta. 94+24.91 "A"
- 3 Sta. 357+03.40 "A" to Sta. 357+55.56 "A"
- 4 Sta. 527+76.90 "A" to Sta. 528+16.14 "A"

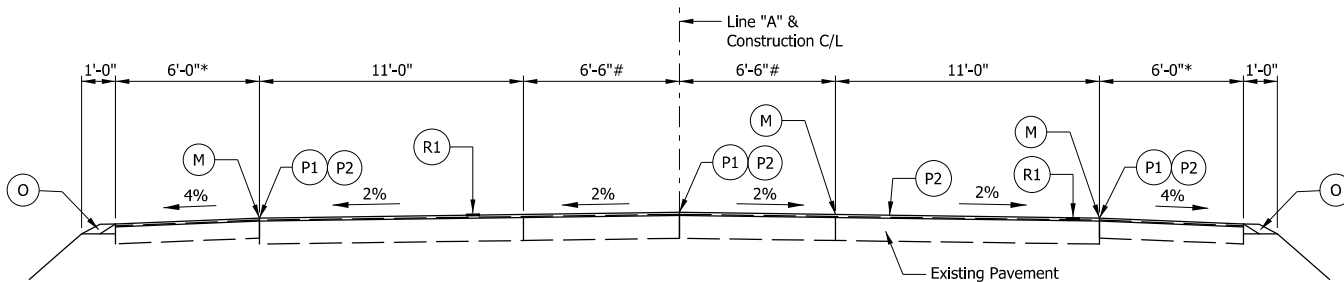
* Stations of paving exception limits are approximate.

LEGEND

- (R) 165 #/sys QC/QA HMA, 3, 70, Surface, 9.5mm on Milling, Asphalt, 1 1/2" (edge of shoulder to edge of shoulder)
- (R1) 75 #/sys Ultra-thin Bonded Wearing Course, 9.5mm on Milling/Scarification (edge of shoulder to edge of shoulder)
- (O) Compacted Aggregate No. 53
- (P1) Joint Adhesive Required for Surface Layers at Longitudinal Joints
- (P2) Liquid Asphalt Sealant Required on Surface Layer over Longitudinal Joint, 24" Width
- (M) Milled HMA Corrugations



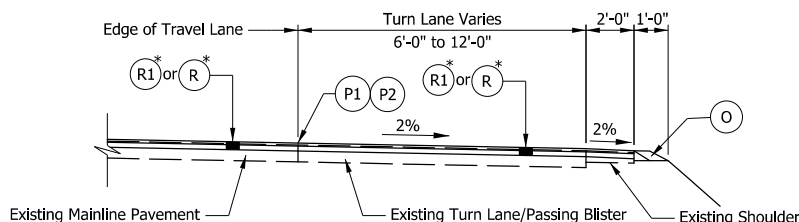
TYPICAL CROSS SECTIONS	DESIGNED BY:	SCALE	CONTRACT NO.	Date Approved: 11/16/16 <i>Matthew Larrabee</i> Approved By:
	MSL	AS NOTED	RS-39160	
	DRAWN BY:	STATE	COUNTY	
	AM	INDIANA	HAMILTON/MADISON DISTRICT	
CHECKED BY:	DES. NO.	DISTRICT		
MSL	1592866 & 1593203	GREENFIELD		



PROPOSED TYPICAL SECTION

Sta. 63+96.04 to 82+50.75

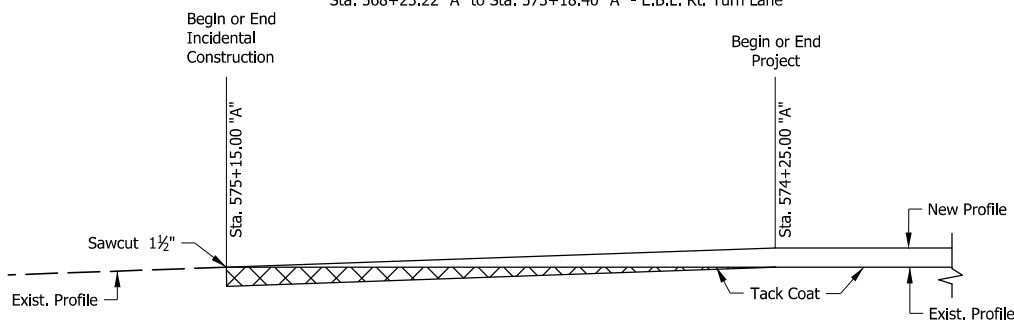
Varies from 0' at Sta. 63+96.04 "A" to 6'-6" at Sta. 69+65.35 "A"
 Center Lane is 6'-6" from Sta. 69+65.35 "A" to Sta. 79+34.61 "A"
 Varies from 6'-6" at Sta. 79+34.61 "A" to 0'-0" at Sta. 82+50.75 "A"
 * Shoulder is 6'-0" from Sta. 63+96.04 "A" to Sta. 65+76.66 "A"
 Varies from 2'-0" at Sta. 65+76.66 "A" to 4'-0" at Sta. 69+23.93 "A"
 Shoulder is 6'-0" from Sta. 69+23.93 "A" to Sta. 82+50.75 "A"



TYPICAL TURN LANE SECTION

Sta. 35+21.90 "A" to Sta. 40+26.40 "A" - W.B.L. Passing Blister
 Sta. 35+42.60 "A" to Sta. 39+58.28 "A" - E.B.L. Rt. Turn Lane
 Sta. 69+65.35 "A" to Sta. 72+86.28 "A" - E.B.L. Rt. Turn Lane
 Sta. 139+14.70 "A" to Sta. 142+42.10 "A" - W.B.L. Rt. Turn Lane
 Sta. 207+32.00 "A" to Sta. 210+00.00 "A" - W.B.L. Rt. Turn Lane
 Sta. 262+33.00 "A" to Sta. 265+31.35 "A" - W.B.L. Rt. Turn Lane
 Sta. 511+18.00 "A" to Sta. 518+73.82 "A" - W.B.L. Rt. Turn Lane
 Sta. 531+62.56 "A" to Sta. 536+38.50 "A" - W.B.L. Rt. Turn Lane
 Sta. 565+84.14 "A" to Sta. 573+18.40 "A" - W.B.L. Rt. Turn Lane
 Sta. 568+23.22 "A" to Sta. 573+18.40 "A" - E.B.L. Rt. Turn Lane

* (R1) to be used Prior to Sta. 373+50 and (R) to be used after



ASPHALT MILLING TRANSITION DETAIL

Sta. 574+25.00 "A" to 575+15.00 "A"

LEGEND

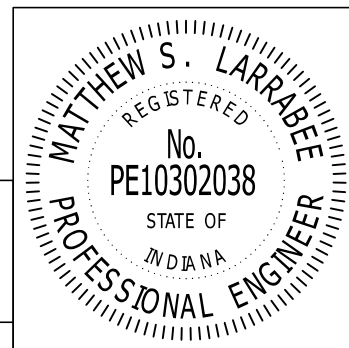
- (R) 165 #/sys QC/QA HMA, 3, 70, Surface, 9.5mm on Milling, Asphalt, 1 1/2" (edge of shoulder to edge of shoulder)
- (R1) 75 #/sys Ultra-thin Bonded Wearing Course, 9.5mm on Milling/Scarification (edge of shoulder to edge of shoulder)
- (O) Compacted Aggregate No. 53
- (P1) Joint Adhesive Required for Surface Layers at Longitudinal Joints
- (P2) Liquid Asphalt Sealant Required on Surface Layer over Longitudinal Joint, 24" Width
- (M) Milled HMA Corrugations

TYPICAL CROSS SECTIONS

DESIGNED BY: MSL	SCALE	CONTRACT NO.
	1/8"=1'-0"	RS-39160
	STATE	COUNTY
	INDIANA	HAMILTON/MADISON
DRAWN BY: AM	DES. NO.	DISTRICT
	1592866 & 1593203	GREENFIELD
CHECKED BY: MSL		

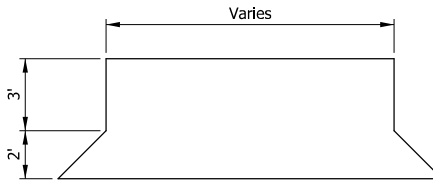
Date Approved: 11/16/16

Matthew S. Larrabee
 Approved By:



PUBLIC ROAD AND APPROACH SUMMARY TABLE								
Station	Side	Road Name / Home Address	Existing Road Condition	Treatment Type	Width at Travel Lane	Width at Radii / Taper	Length (along appr.)	Area
					(ft)	(ft)	(ft)	(sys)
17+90	Rt	Stony Lane		UBWC	85	24	40	242
21+80	Rt			UBWC	35	24	6	20
28+65	Rt			UBWC	42	24	6	22
37+33	Rt	Estates Blvd.		UBWC	100	54	24	205
39+94	Lt			UBWC	28	14	6	14
44+80	Lt	Deshane Ave.		UBWC	56	18	30	123
45+72	Rt			UBWC	32	15	6	16
50+10	Rt			UBWC	26	14	6	13
71+31	Rt	Long Creek Dr.		UBWC	105	48	36	306
85+44	Lt			UBWC	50	26	6	25
85+68	Rt			UBWC	40	22	6	21
89+27	Lt			UBWC	40	22	6	21
91+40	Lt			UBWC	80	58	6	46
98+54	Lt			UBWC	70	38	6	36
99+27	Lt			UBWC	70	38	6	36
101+75	Rt	Boden Rd.		PM	80	24	72	416
101+75	Lt	Middletown Ave.		UBWC	62	34	20	107
106+50	Lt			UBWC	40	22	6	21
118+54	Lt			UBWC	34	16	6	17
123+87	Lt			UBWC	32	16	6	16
124+21	Lt			UBWC	32	16	6	16
135+83	Lt			UBWC	24	14	6	13
139+55	Rt			UBWC	55	25	6	27
140+60	Lt	Mystic Rd.		UBWC	36	20	15	47
149+53	Rt			UBWC	30	18	6	16
150+82	Rt			UBWC	36	20	6	19
153+38	Lt			UBWC	44	30	6	25
154+06	Rt	Olio Rd.		UBWC	58	20	28	121
161+98	Rt			UBWC	26	14	6	13
162+10	Lt			UBWC	34	18	6	17
163+70	Rt			UBWC	36	20	6	19
168+94	Lt			UBWC	22	12	6	11
169+01	Rt			UBWC	28	18	6	15
169+66	Lt			UBWC	36	22	6	19
170+98	Lt	Lehr Street		UBWC	38	14	16	46
170+98	Rt	Lehr Street		UBWC	38	14	16	46
171+80	Rt			UBWC	30	20	6	17
172+90	Rt			UBWC	30	24	6	18
172+94	Lt			UBWC	24	14	6	13
173+84	Rt			UBWC	108	98	6	69
174+84	Lt	Mason Street		UBWC	32	14	15	38
174+84	Rt	Mason Street		UBWC	38	14	22	64
175+86	Rt			UBWC	46	46	6	31
176+80	Lt			UBWC	24	10	6	11
177+88	Lt			UBWC	28	20	6	16
178+71	Rt	E 143rd		UBWC	54	24	15	65
178+71	Rt	E 143rd		UBWC	42	18	15	50
182+40	Lt			UBWC	40	24	6	21
189+02	Lt			UBWC	30	18	6	16
191+38	Lt			UBWC	38	26	6	21
191+55	Rt			UBWC	32	18	6	17
201+89	Rt			UBWC	28	14	6	14
208+47	Lt	Prairie Baptist Rd.		UBWC	46	18	20	71
208+47	Rt	Prairie Baptist Rd.		UBWC	38	18	20	62
222+26	Lt			UBWC	30	16	6	15
224+98	Lt			UBWC	45	26	6	24

PUBLIC ROAD AND APPROACH SUMMARY TABLE									
Station	Side	Road Name / Home Address	Existing Road Condition	Treatment Type	Width at Travel Lane	Width at Radii / Taper	Length (along appr.)	Area	
					(ft)	(ft)	(ft)	(sys)	
225+87	Lt			UBWC	28	12	6	13	
229+38	Lt			UBWC	40	28	6	23	
236+22	Lt			UBWC	85	74	6	53	
243+83	Rt			UBWC	34	22	6	19	
250+80	Rt			UBWC	34	24	6	19	
251+85	Lt			UBWC	32	18	6	17	
263+62	Lt	Cyntheanne Rd.		UBWC	54	18	30	120	
263+62	Rt	Cyntheanne Rd.		UBWC	44	18	30	103	
267+51	Lt			UBWC	32	16	6	16	
273+20	Lt			UBWC	64	42	6	35	
274+18	Lt			UBWC	64	46	6	37	
277+27	Rt			UBWC	24	16	6	13	
277+81	Rt			UBWC	34	24	6	19	
290+82	Lt			UBWC	28	16	6	15	
290+96	Rt			UBWC	28	18	6	15	
291+86	Rt			UBWC	28	18	6	15	
292+28	Lt			UBWC	26	16	6	14	
293+12	Lt			UBWC	24	18	6	14	
293+29	Rt			UBWC	24	16	6	13	
294+56	Rt			UBWC	30	20	6	17	
296+16	Rt			UBWC	24	16	6	13	
297+00	Lt			UBWC	26	18	6	15	
297+15	Rt			UBWC	28	20	6	16	
298+85	Rt			UBWC	32	22	6	18	
298+90	Lt			UBWC	28	18	6	15	
300+70	Rt			UBWC	40	28	6	23	
302+52	Rt			UBWC	30	22	6	17	
306+24	Lt			UBWC	28	22	6	17	
307+89	Rt			UBWC	36	24	6	20	
308+57	Rt			UBWC	36	24	6	20	
312+36	Lt			UBWC	36	24	6	20	
313+20	Rt			UBWC	40	28	6	23	
316+02	Lt			UBWC	36	24	6	20	
317+01	Rt			UBWC	32	24	6	19	
318+53	Lt	CR 168		UBWC	56	18	25	103	
318+53	Rt	CR 168		UBWC	56	18	25	103	
339+67	Rt			UBWC	28	18	6	15	
344+47	Lt			UBWC	32	20	6	17	
348+51	Rt			UBWC	30	20	6	17	
355+03	Lt			UBWC	32	20	6	17	
355+66	Rt			UBWC	34	18	6	17	
355+68	Lt			UBWC	22	14	6	12	
359+11	Lt			UBWC	32	20	6	17	
362+27	Lt			UBWC	34	24	6	19	
363+14	Lt			UBWC	20	15	6	12	
364+61	Lt			UBWC	26	18	6	15	
365+58	Lt			UBWC	30	20	6	17	
370+75	Lt			UBWC	34	22	6	19	
371+35	Lt			UBWC	34	24	6	19	
372+65	Lt			UBWC	44	34	6	26	
373+43	Lt	SR 13		UBWC	50	24	25	103	
373+43	Rt	SR 13		UBWC	50	24	25	103	
387+06	Rt	CR 875 W		PM	50	18	25	94	
400+35	Lt			PM	68	50	6	39	
413+96	Rt			PM	22	12	6	11	
419+40	Lt			PM	42	26	6	23	



TYPICAL APPROACH

Sta. xx+xx.xx "A" to Sta. xx+xx.xx "A"

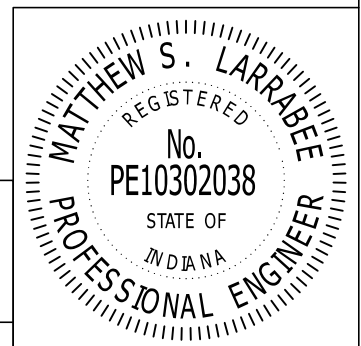
* Boden Road 165 #/sys QC/QA HMA, 3, 70, Surface, 9.5mm on
165 #/sys QC/QA HMA, 3, 70, Surface, 9.5mm on
Milling, Asphalt, 3"

APPROACH SUMMARY

DESIGNED BY: MSL	SCALE	CONTRACT NO.
	N/A	RS-39160
DRAWN BY: AM	STATE	COUNTY
	INDIANA	HAMILTON/ MADISON
CHECKED BY: MSL	DES. NO.	DISTRICT
	1592866 & 1593203	GREENFIELD

Date Approved: 11/16/16

Approved By: *Matthew S. Larrabee*

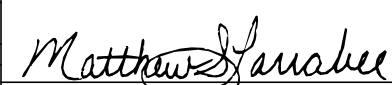


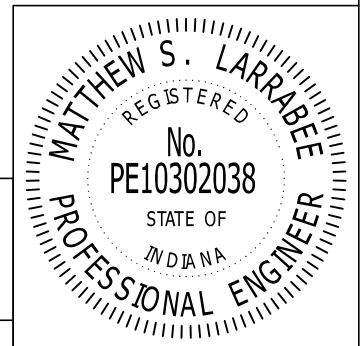
RESURFACING & MILLING SUMMARY TABLE

Station	Widths (feet)						Type of Treat.	Areas (sys)			Milling (sys)				Joint Adhesive		Liq. Asph. Sealant (lft)	Milled HMA Corrug. (lft)	Description / Comments
	Left Shoulder		Mainline	Right Shoulder		Mainline		Shoulder	Asphalt 4.0in.	Asphalt 1.5in.	Transition	Scarification	Surface (lft)	Intermed. (lft)					
	Agg.	HMA		Agg.	HMA														
10+00																			
35+15	2	6	24	2	6	UBWC	6707	3353	1118						10060	2515	2515	7545	
36+50	2	2	48	2	2	UBWC	540	120	60						660	405	405	405	Turn Lane Transitions
38+45	2	6	48	2	6	UBWC	1040	173	87						1213	585	585	585	Turn Lane and Passing Blister
40+15	2	6	24	2	6	UBWC	680	227	76						907	170	170	510	Turn Lane Transitions
61+60	2	6	24	2	6	UBWC	5720	2860	953						8580	2145	2145	6435	
63+95			24																Paving Exception
67+50	2	2	36	2	2	UBWC	1183	316	158						1499	710	710	1065	Transitions
69+65	2	6	36	2	6	UBWC	860	191	96						1051	430	430	645	Crosshatch Center Lane
70+65	2	6	48	2	2	UBWC	467	111	44						578	300	300	300	Turn Lane Transition
71+95	2	6	48	2	2	UBWC	693	116	58						809	390	390	390	Turn Lane
72+95	2	6	36	2	6	UBWC	467	111	44						578	200	200	300	Turn Lane Transition
78+95	2	6	36	2	6	UBWC	2400	800	267						3200	1200	1200	1800	Turn Lane
82+45	2	6	24	2	6	UBWC	1167	467	156						1634	350	350	1050	Turn Lane Transition
92+90	2	6	24	2	6	UBWC	2787	1393	464						4180	1045	1045	3135	
94+25			24																Paving Exception
139+00	2	6	24	2	6	UBWC	11933	5967	1989						17900	4475	4475	13425	
140+40	2	2	36	2	6	UBWC	467	156	62						623	280	280	420	Turn Lane Transition
141+55	2	2	36	2	6	UBWC	460	102	51						562	230	230	345	Turn Lane
142+35	2	6	24	2	6	UBWC	267	89	36						356	80	80	240	Turn Lane Transition
162+15	2	6	24	2	6	UBWC	5280	2640	880						7920	1980	1980	5505	CLELRS end at Sta. 160+70
185+30	2	2	24	2	2	UBWC	6173	2058	1029						8231	2315	2315	5925	2' Shoulder through Clarksville - CLELRS begin at Sta. 187+50
207+25	2	6	24	2	6	UBWC	5853	1951	976						7804	2195	2195	6585	
208+20	2	2	36	2	6	UBWC	317	106	42						423	190	190	285	Turn Lane Transition
209+45	2	2	36	2	6	UBWC	500	111	56						611	250	250	375	Turn Lane
210+05	2	6	24	2	6	UBWC	200	67	27						267	60	60	180	Turn Lane Transition
262+25	2	6	24	2	6	UBWC	13920	6960	2320						20880	5220	5220	15660	
263+30	2	2	36	2	6	UBWC	350	117	47						467	210	210	315	Turn Lane Transition
264+75	2	2	36	2	6	UBWC	580	129	64						709	290	290	435	Turn Lane
265+45	2	6	24	2	6	UBWC	233	78	31						311	70	70	210	Turn Lane Transition
356+90	2	6	24	2	6	UBWC	24387	12193	4064						36580	9145	9145	27435	
357+45			24																Paving Exception
373+35	2	6	24	2	6	UBWC	4240	2120	707						6360	1590	1590	4770	SR 13 Intersection
511+00	1	1	24	1	1	PM	36707	10706	3059						47413	13765	13765		
512+65	1	1	36	1	1	PM	550	37	37						587	330	330		Turn Lane Transition
517+55	1	1	36	1	1	PM	1960	109	109						2069	980	980		Turn Lane
518+70	1	1	24	1	1	PM	383	26	26						409	115	115		Turn Lane Transition
527+65	1	1	24	1	1	PM	2387	199	199						2586	895	895		
528+05			24																Paving Exception
530+40	1	1	24	1	1	PM	627	52	52						679	235	235		
533+15	1	1	48	1	1	PM	1100	61	61						1161	825	825		Turn Lane and Transitions
535+50	1	1	48	1	1	PM	1253	52	52						1305	705	705		Turn Lane
537+35	1	1	24	1	1	PM	740	41	41						781	185	185		Turn Lane Transitions
565+65	1	1	24	1	1	PM	7547	629	629						8176	2830	2830		
567+15	1	1	36	1	1	PM	500	33	33						533	300	300		Turn Lane Transitions
568+40	1	1	36	1	1	PM	500	28	28						528	250	250		Turn Lane
570+25	1	1	48	1	1	PM	863	41	41						904	555	555		Turn Lane and Transitions
571+90	1	1	48	1	1	PM	880	37	37						917	495	495		Turn Lanes
573+15	1	10	36	1	1	PM	583	90	28						673	375	375		Turn Lane and Transitions
575+05	1	10	36	1	1	PM	760	232	42						992	570	570		

QUANTITY SUMMARY

Mainline		Shoulder		Asphalt for Tack Coat	Comp. Agg. No. 53	Milling				Joint Adhesive		Liquid Asphalt Sealant	Milled HMA Corrug.
QC/QA-HMA		QC/QA-HMA				Asphalt	Asphalt	Transi-tion	Scarifica-tion	Surface	Intermed		
UBWC	Surface	UBWC	Surface										
9.5mm	165#/sys	9.5mm	165#/sys	(ton)	(ton)	4.0"	1.5"	(sys)	(sys)	(lft)	(lft)	(lft)	(lft)
99241	4731	45082	1021	17.4	3413	(sys)	69713	(sys)	144953	62435	(lft)	62435	106275

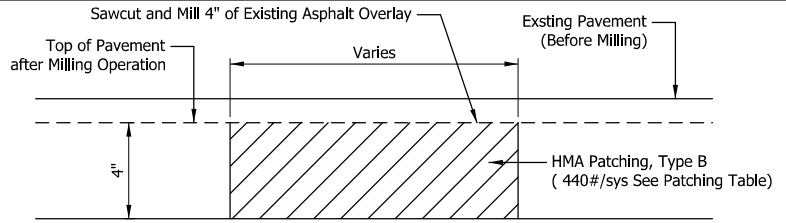
<p>RESURFACING & MILLING SUMMARY</p>	DESIGNED BY:	SCALE	CONTRACT NO.	Date Approved: 11/16/16  Approved By:
	DRAWN BY:	N/A	RS-39160	
	AM	STATE	COUNTY	
	CHECKED BY:	INDIANA	HAMILTON/MADISON DISTRICT	
	MSL	DES. NO.	GREENFIELD	
		1592866 & 1593203		



PATCHING SUMMARY TABLE								
Patch Type*	Station From	Station To	EB/WB	Length (LFT)	Width (LFT)	Area (SYS)	Description	
DES. NO. 1592866								
3	99+04	100+68	EB	164	8	145.8	PD	SH
1	102+17	102+29	EB	12	6	8.0	PD	RWP
1	102+33	102+39	EB	6	6	4.0	PD	RWP
1	131+59	135+94	EB	435	6	290.0	PD	RWP
6	150+19	151+19	EB	100	7	77.8	PD	SH
6	173+91	176+31	EB	240	7	186.7	PD	SH
5	190+00	192+44	EB	244	6	162.7	PD	CL
2	371+06	358+85	WB	1221	7	949.7	FD	SH
1	291+67	289+54	WB	213	7	165.7	PD	SH
2	156+00	155+80	WB	20	7	15.6	FD	SH
2	143+00	142+90	WB	10	7	7.8	FD	SH
2	116+00	115+20	WB	80	12	106.7	FD	ALL
1	115+20	118+21	WB	301	12	401.3	PD	ALL
1	99+46	93+84	WB	562	12	749.3	PD	ALL
7	92+27	90+69	WB	158	7	122.9	PD	CL
4	89+31	87+61	WB	170	7	132.2	FD	SH
DES. NO. 1593203								
1	374+18	374+38	EB	20	12	26.7	PD	ALL
1	387+12	398+33	EB	1121	6	747.3	PD	RWP
1	419+36	424+54	EB	518	6	345.3	PD	RWP
1	459+00	466+32	EB	732	6	488.0	PD	RWP
4	537+26	537+76	EB	50	8	44.4	FD	ALL
3	564+41	567+47	EB	306	6	204.0	PD	RWP
3	567+47	560+88	WB	659	6	439.3	PD	RWP
3	540+61	536+27	WB	434	6	289.3	PD	RWP
3	537+76	537+56	WB	20	10	22.2	PD	ALL
4	508+00	507+90	WB	10	6	6.7	FD	RWP
3	507+90	503+48	WB	442	6	294.7	PD	RWP
3	499+24	498+49	WB	75	6	50.0	PD	RWP
2	423+70	422+04	WB	166	12	221.3	FD	ALL
2	99+46	93+84	WB	562	6	374.7	FD	RWP

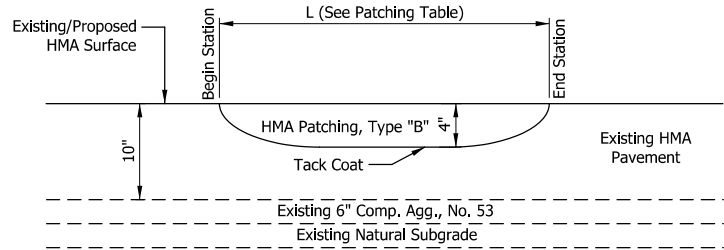
Des. No.	Patch Type	Area (SYS)	HMA for Patching, Type B (LBS/SYS)	HMA for Patching, Type B (TON)
BOTH	1	3225.7	440	709.6
BOTH	2	1675.7	1100	921.6
1592866	3	145.8	440	32.1
1593203	3	1299.6	770	500.3
1592866	4	132.2	1540	101.8
1593203	4	51.1	770	19.7
1592866	5	162.7	440	35.8
1592866	6	264.4	220	29.1
1592866	7	122.9	770	47.3

TOTAL = 2398



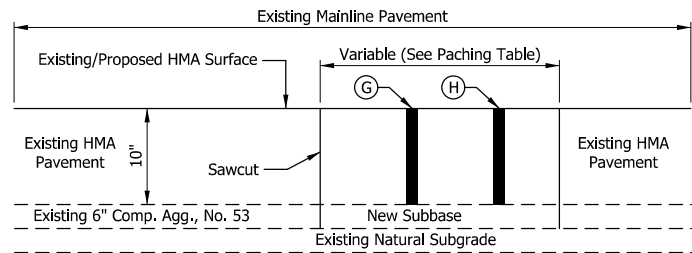
PATCHING DETAIL - FULL DEPTH

Not to Scale



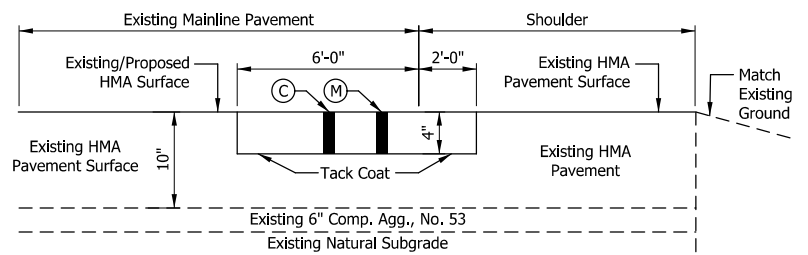
1. PARTIAL DEPTH PATCHING DETAIL

Not to Scale
(1592866 & 1593203)



2. FULL DEPTH PATCHING DETAIL

Not to Scale
(1592866)



3. LONGITUDNAL PARTIAL DEPTH PATCHING DETAIL (EDGE OF TRAVEL LANE/SHOULDER)

Not to Scale
(1592866)

LEGEND

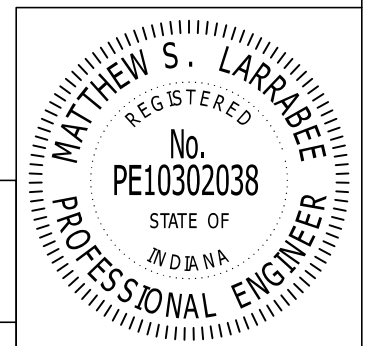
- (C) Partial-Depth HMA Patching, 4" From Surface
HMA Patching Type, B
Existing Pavement
Existing Subbase and Subgrade
- (C1) Partial-Depth HMA Patching, 2" From Surface
HMA Patching Type, B
Existing Pavement
Existing Subbase and Subgrade
- (G) Full-Depth HMA Patching To Top of Existing Subgrade
HMA Patching, Type "B"
New Subbase (6" Comp. Agg., No. 53) on,
Existing Natural Subgrade
- (H) Remove Existing Asphalt to Existing Subgrade
- (M) Remove Existing Asphalt, 4" From Surface
- (M1) Remove Existing Asphalt, 2" From Surface

Notes:

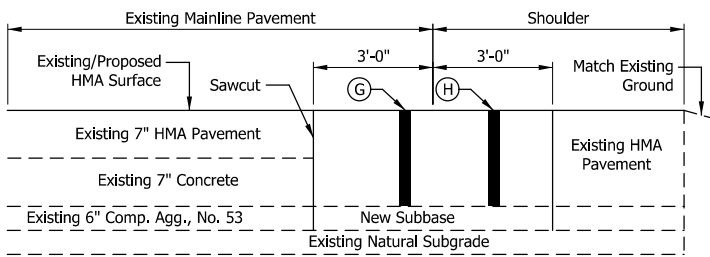
Detail Does Not Reflect Superelevated Pavement Sections. Final Profile Grade Shall Be Re-Established To Match Existing Conditions.

Partial-Depth Patching shall be done in accordance with INDOT Standard Specifications 304.04

Full-Depth Patching shall be done in accordance with INDOT Standard Specifications 506

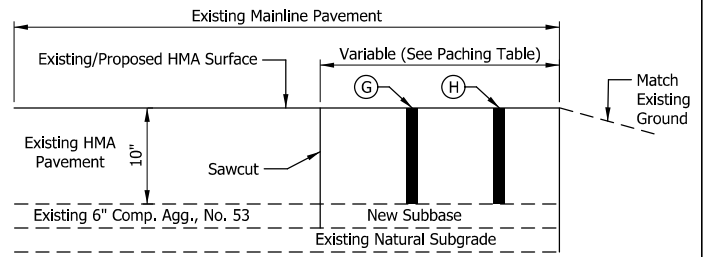


PATCHING SUMMARY	DESIGNED BY:	SCALE	CONTRACT NO.	Date Approved: 11/16/16
	MSL	N/A	RS-39160	
	DRAWN BY:	STATE	COUNTY	
	AM	INDIANA	HAMILTON/MADISON	
CHECKED BY:	DES. NO.	DISTRICT	<i>Matthew Larrabee</i>	
MSL	1592866 & 1593203	GREENFIELD		
				Approved By:



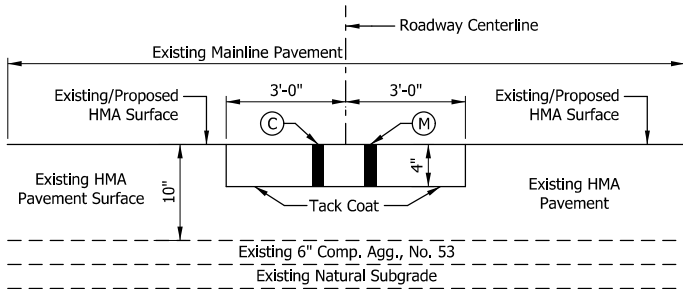
4. FULL DEPTH PATCHING DETAIL (EDGE OF TRAVEL LANE/SHOULDER)

Not to Scale
(1592866)



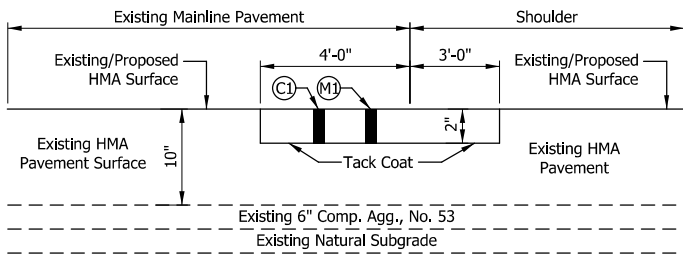
2. FULL DEPTH PATCHING DETAIL ON HMA PAVEMENT

Not to Scale
(1593203)



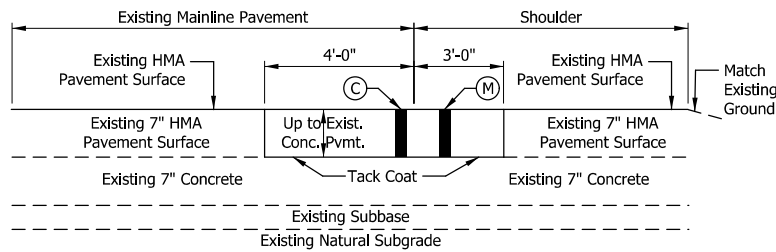
5. LONGITUDNAL PARTIAL DEPTH PATCHING DETAIL (ROADWAY CENTERLINE)

Not to Scale
(1592866)



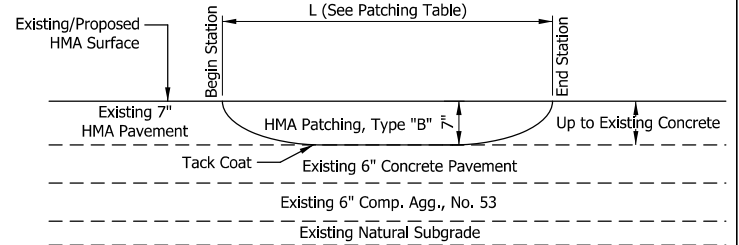
6. LONGITUDNAL PARTIAL DEPTH PATCHING DETAIL

Not to Scale
(1592866)



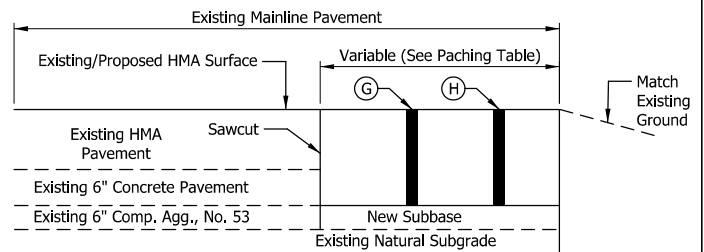
7. LONGITUDNAL PARTIAL DEPTH PATCHING DETAIL (EDGE OF TRAVEL LANE SHOULDER)

Not to Scale
(1592866)



3. PARTIAL DEPTH PATCHING DETAIL ON COMPOSITE PAVEMENT

Not to Scale
(1593203)



4. FULL DEPTH PATCHING DETAIL ON COMPOSITE PAVEMENT

Not to Scale
(1593203)

LEGEND

Notes:

(C) Partial-Depth HMA Patching, 4" From Surface Existing Pavement Existing Subbase and Subgrade

(C1) Partial-Depth HMA Patching, 2" From Surface HMA Patching Type, B Existing Pavement Existing Subbase and Subgrade

(G) Full-Depth HMA Patching To Top of Existing Subgrade HMA Patching, Type "B" New Subbase (6" Comp. Agg., No. 53) on, Existing Natural Subgrade

(H) Remove Existing Asphalt to Existing Subgrade

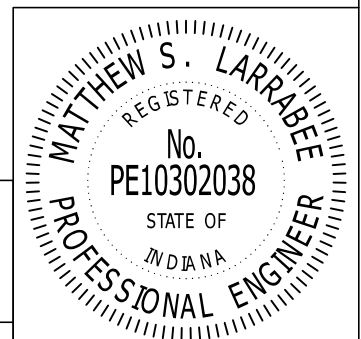
(M) Remove Existing Asphalt, 4" From Surface

(M1) Remove Existing Asphalt, 2" From Surface

Detail Does Not Reflect Superelevated Pavement Sections. Final Profile Grade Shall Be Re-Established To Match Existing Conditions.

Partial-Depth Patching shall be done in accordance with INDOT Standard Specifications 304.04

Full-Depth Patching shall be done in accordance with INDOT Standard Specifications 506



PATCHING SUMMARY

DESIGNED BY:	SCALE	CONTRACT NO.
MSL	N/A	RS-39160
DRAWN BY:	STATE	COUNTY
AM	INDIANA	HAMILTON/MADISON
CHECKED BY:	DES. NO.	DISTRICT
MSL	1592866 & 1593203	GREENFIELD

Date Approved: 11/16/16

Approved By: *Matthew S. Larrabee*

PAVEMENT MARKING SUMMARY TABLE																	
Start Station	End Station	WB		Centerline	EB		Line, Paint					Crosshatch		Temp. Pavement Marking, 4 in. (ft)	SRPM's Remove (ea)	HMA Corrugations (CL) (ft)	HMA Corrugations (EL) (ft)
		Edge Line	Lane Lines		Lane Lines	Edge Line	Solid, Yellow, 4 in. (ft)	Broken, Yellow, 4 in. (ft)	Solid, White, 4 in. (ft)	Broken, White, 4 in. (ft)	Dotted, Yellow, 4 in. (ft)	Solid, Yellow, 12 in. (ft)	Solid, White, 12 in. (ft)				
10+35	17+60	Yes		No Passing Both	Yes	1450		1450						73	9	725	1450
17+60	18+25	Yes		Stony Lane	No			65									
18+25	36+55	Yes		No Passing Both	Yes	3660		3660						183	23	1830	3660
36+55	36+85	Yes	Solid	No Passing Both	Yes	60		90						3		30	60
36+85	37+75	Yes	Solid	Estates Blvd	No			180									
37+75	38+50	Yes	Solid	No Passing Both	Yes	150		225						8	1	75	150
38+50	44+55	Yes		No Passing Both	Yes	1210		1210						61	8	605	1210
44+55	45+05	No		Deshane Ave	Yes			50									
45+05	48+65	Yes		No Passing Both	Yes	720		720						36	5	360	720
48+65	61+25	Yes		No Passing WB	Yes	1260	315	2520						126	16	1260	2520
61+25	61+60	Yes		No Passing Both	Yes	70		70						4		35	70
61+60	63+95	No		Paving Exception	No												
63+95	70+70	Yes		No Passing Both	Yes	1350		1350			225			68	8	675	1350
70+70	71+95	Yes		Long Creek Dr	No			125									
71+95	76+90	Yes	Solid	No Passing Both	Yes	990		1485						50	6	495	990
76+90	82+15	Yes		No Passing Both	Yes	1050		1050			167			53	7	525	1050
82+15	92+90	Yes		No Passing Both	Yes	2150		2150						108	13	1075	2150
92+90	94+25	No		Paving Exception	No												
94+25	101+50	Yes		No Passing Both	Yes	1450		1450						73	9	725	1450
101+50	102+05	No	Middletown Ave.														
102+05	140+40	Yes		No Passing Both	Yes	7670		7670						384	48	3835	7670
140+40	140+75	No		Mystic Road	Yes			35									
140+75	141+55	Yes	Solid	No Passing WB	Yes	80	20	240						8	1	80	160
141+55	147+25	Yes		No Passing WB	Yes	570	142.5	1140						57	7	570	1140
147+25	153+75	Yes		Passing Both	Yes		162.5	1300						65	8	650	1300
153+75	154+30	Yes		Olio Road	No			55									
154+30	157+35	Yes		Passing Both	Yes		76.25	610						31	4	305	610
157+35	162+40	Yes		No Passing EB	Yes	505	126.25	1010						51	6	505	1010
162+40	170+70	Yes		No Passing Both	Yes	1660		1660						83	10		
170+70	171+10	No		Lehr Street	No												
171+10	174+60	Yes		No Passing Both	Yes	700		700						35	4		
174+60	174+90	No		Mason Street	No												
174+90	178+45	Yes		No Passing Both	Yes	710		710						36	4		
178+45	178+90	No		E 143rd	No												
178+90	184+35	Yes		No Passing Both	Yes	1090		1090						55	7		
184+35	189+95	Yes		No Passing WB	Yes	560	140	1120						56	7		
189+95	208+20	Yes		Passing Both	Yes		456.25	3650						183	23	1825	3650
208+20	208+55	No		Prairie Baptist Rd	No												
208+55	209+30	Yes	Solid	Passing Both	Yes		18.75	225						8	1	75	150
209+30	263+30	Yes		Passing Both	Yes		1350	10800						540	68	5400	10800
263+30	263+70	No		Cyntheanne Rd	No												
263+70	264+50	Yes	Solid	Passing Both	Yes		20	240						8	1	80	160
264+50	266+50	Yes		Passing Both	Yes		50	400						20	3	200	400
266+50	278+00	Yes		No Passing EB	Yes	1150	287.5	2300						115	14	1150	2300
278+00	293+75	Yes		No Passing Both	Yes	3150		3150						158	20	1575	3150
293+75	303+90	Yes		No Passing WB	Yes	1015	253.75	2030						102	13	1015	2030
303+90	307+10	Yes		Passing Both	Yes		80	640						32	4	320	640
307+10	317+30	Yes		No Passing EB	Yes	1020	255	2040						102	13	1020	2040

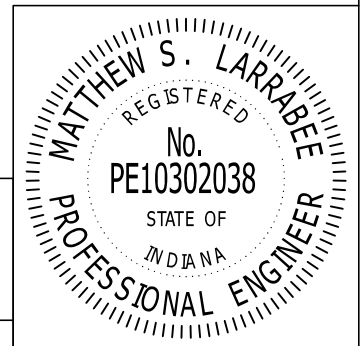
PAVEMENT MARKING SUMMARY

DESIGNED BY:	MSL	SCALE	N/A	CONTRACT NO.	RS-39160
DRAWN BY:	AM	STATE	INDIANA	COUNTY	HAMILTON/MADISON
CHECKED BY:	MSL	DES. NO.	1592866 & 1593203	DISTRICT	GREENFIELD

Date Approved: 11/16/16

Matthew S. Larrabee

Approved By:



PAVEMENT MARKING SUMMARY TABLE																	
Start Station	End Station	WB		Centerline	EB		Line, Paint					Crosshatch		Temp. Pavement Marking, 4 in. (ft)	SRPM's Remove (ea)	HMA Corrugations (CL) (ft)	HMA Corrugations (EL) (ft)
		Edge Line	Lane Lines		Lane Lines	Edge Line	Solid, Yellow, 4 in. (ft)	Broken, Yellow, 4 in. (ft)	Solid, White, 4 in. (ft)	Broken, White, 4 in. (ft)	Dotted, Yellow, 4 in. (ft)	Solid, Yellow, 12 in. (ft)	Solid, White, 12 in. (ft)				
317+30	318+05	Yes		No Passing Both		Yes	150		150					8	1	75	150
318+05	318+65	No		E CR 168		No											
318+65	332+80	Yes		No Passing Both		Yes	2830		2830					142	18	1415	2830
332+80	356+90	Yes		Passing Both		Yes		602.5	4820					241	30	2410	4820
356+90	357+45	No		Paving Exception		No											
357+45	367+45	Yes		Passing Both		Yes		250	2000					100	13	1000	2000
367+45	372+95	Yes		No Passing EB		Yes	550	137.5	1100					55	7	550	1100
372+95	373+80	Yes		SR 13		Yes			170								
373+80	381+35	Yes		No Passing WB		Yes	755	188.75	1510					76	9	755	
381+35	386+70	Yes		Passing Both		Yes		133.75	1070					54	7	535	
386+70	387+30	Yes		CR 875 W		No			60								
387+30	411+80	Yes		Passing Both		Yes		612.5	4900					245	31	2450	
411+80	418+00	Yes		No Passing EB		Yes	620	155	1240					62	8	620	
418+00	421+80	Yes		Passing Both		Yes		95	760					38	5	380	
421+80	427+70	Yes		No Passing WB		Yes	590	147.5	1180					59	7	590	
427+70	428+20	No		CR 800 W		No											
428+20	472+25	Yes		Passing Both		Yes		1101.25	8810					441	55	4405	
472+25	482+20	Yes		No Passing EB		Yes	995	248.75	1990					100	12	995	
482+20	482+60	Yes		No Passing Both		Yes	80		80					4	1	40	
482+60	483+10	No		CR 700W		Yes			50								
483+10	497+70	Yes		No Passing Both		Yes	2920		2920					146	18	1460	
497+70	498+30	Yes		CR 675 W		No			60								
498+30	508+20	Yes		No Passing WB		Yes	990	247.5	1980					99	12	990	
508+20	512+90	Yes		Passing Both		Yes		117.5	940					47	6	470	
512+90	513+50	No		Independence Ct		Yes			60								
513+50	517+30	Yes	Solid	Passing Both		Yes		95	1140					38	5	380	
517+30	524+15	Yes		Passing Both		Yes		171.25	1370					69	9	685	
524+15	524+75	No		CR 625 W		Yes			60								
524+75	525+50	Yes		Passing Both		Yes		18.75	150					8	1	75	
525+50	527+65	Yes		No Passing EB		Yes	215	53.75	430					22	3	215	
527+65	528+05	No		Paving Exception		No											
528+05	529+65	Yes		No Passing EB		Yes	160	40	320					16	2	160	
529+65	530+50	Yes		No Passing Both		Yes	170		170					9	1	85	
530+50	532+35	Yes		No Passing (4)		Yes	740		370					19	2	185	
532+35	533+15	Yes		No Passing Both	Solid	Yes	160		240					8	1	80	
533+15	533+75	No		S Fox Chase		Yes			60								
533+75	535+55	Yes	Solid	No Passing (4)		Yes	720		540					18	2	180	
535+55	536+60	Yes		No Passing (4)		Yes	420		210					11	1	105	
536+60	537+25	Yes		CR 600 W		No			65								
537+25	545+55	Yes		No Passing WB		Yes	830	207.5	1660					83	10	830	
545+55	553+05	Yes		No Passing EB		Yes	750	187.5	1500					75	9	750	
553+05	553+85	Yes		Passing Both		Yes		20	160					8	1	80	
553+85	562+00	Yes		No Passing WB		Yes	815	203.75	1630					82	10	815	
562+00	568+45	Yes		Passing Both		Yes		161.25	1290					65	8	645	
568+45	571+55	Yes	Solid	Passing Both		Yes		77.5	930					31	4	310	
571+55	575+05	Yes		No Passing EB	Solid	Yes	350	87.5	1050					35	4	350	
							51260	9115	112690	0	0	392	0	5489	684	52090	64940

PAVEMENT MARKING SUMMARY

DESIGNED BY:	SCALE	CONTRACT NO.
MSL	N/A	RS-39160
DRAWN BY:	STATE	COUNTY
AM	INDIANA	HAMILTON/MADISON
CHECKED BY:	DES. NO.	DISTRICT
MSL	1592866 & 1593203	GREENFIELD

Date Approved: 11/16/16

Approved By: *Matthew S. Larrabee*

