

CODE NO. 2091

R/W INDEX

ST-5229(C) 38-29-6905 TWIN CORRUGATED STEEL PIPE ARCHES N.A. WEST FORK SLY RUN CREEK 16+91

SHEET DESIGNATION	SUBJECT	APPROVAL
1	TITLE AND INDEX SHEET	
2	PARCEL LISTING	
3	PLAT NO. 1	
4	LAYOUT SHEET	
5	CORRUGATED STEEL STRUCTURAL PLATE PIPE ARCH DETAILS	
6	BRIDGE SUMMARY CROSS SECTIONS	

NOTE: WHEREVER "INDIANA STATE HIGHWAY COMMISSION" APPEARS IN THESE PLANS, IT SHALL BE INTERPRETED AS "INDIANA DEPARTMENT OF HIGHWAYS" EXCEPT THE 1978 INDIANA STATE HIGHWAY COMMISSION SPECIFICATIONS SHALL BE USED.

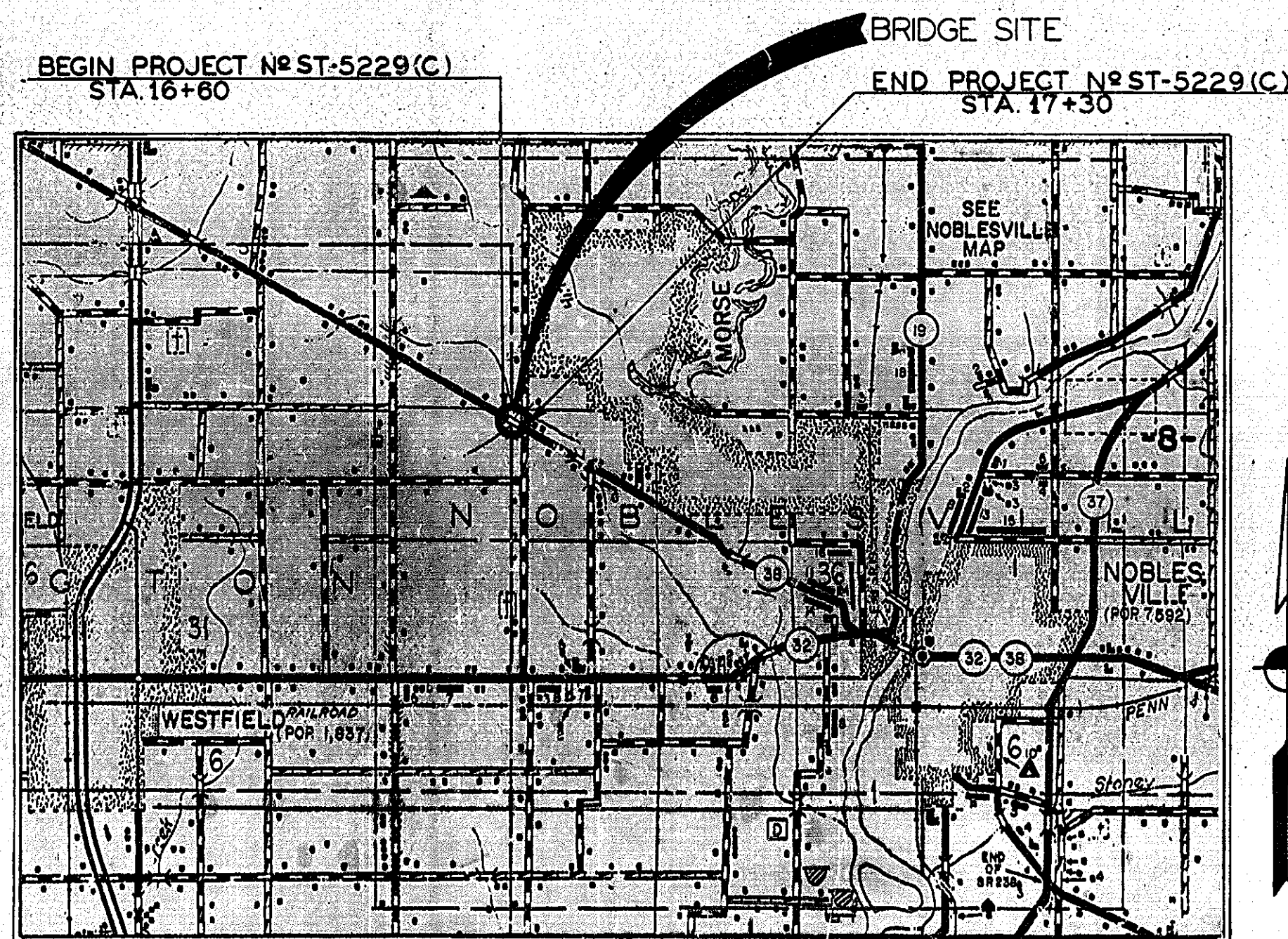
TRAFFIC DATA			
A. D. T. (1981)		3473	V. P. D.
A. D. T. (2004 PROJECTED)		6807	V. P. D.
D. H. V. (2004 PROJECTED)		476	V. P. D.
TRUCKS	D. H. V. 3 % A. D. T. 5 %		
DESIGN SPEED		70	W. P. H.
ACCESS CONTROL		NONE	

STATE OF INDIANA
INDIANA STATE HIGHWAY COMMISSION

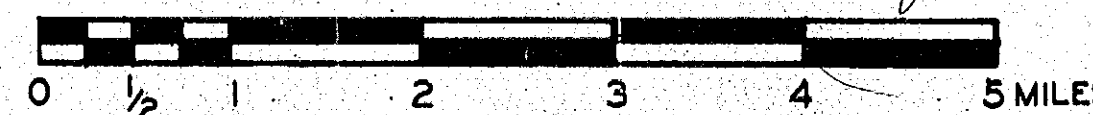
RIGHT OF WAY PLANS
FOR SPANS OVER 20 FEET
ON
STATE ROAD NO. 38
PROJECT NO. RS-5229 (2) PE
ST-5229 (C) R/W
RS-5229 () CONST.

BEGINNING AT A POINT ON E STATE ROAD 38 WHICH IS APPROXIMATELY 110.94' WEST AND 884.15' SOUTH OF THE N.W. COR. OF SEC. 27 AND EXTENDING 70' IN A SOUTHEASTERLY DIRECTION ALONG THE CENTERLINE OF STATE ROAD 38 TO A POINT ON E OF STATE ROAD 38 WHICH IS APPROXIMATELY 49.68' WEST AND 918.03' SOUTH OF THE N.W. COR. OF SEC. 27. THIS PROJECT IS LOCATED IN SEC. 28, T19N, R4E, NOBLESVILLE TOWNSHIP, HAMILTON COUNTY, INDIANA.

BRIDGE LENGTH	N.A. MI
ROADWAY LENGTH	.03 MI
TOTAL LENGTH	.03 MI
MAX. GRADE	+0.57 %



NOBLESVILLE TWP. HAMILTON COUNTY. RECOMMENDED FOR APPROVAL 3-16-84. John W. Brussard, CHIEF, DIVISION OF LAND ACQUISITION.



INDEX CONTINUED
STANDARD DRAWINGS

SHEET NO.	SHEET DESIGNATION	SUBJECT
BRIDGE STD. BR1	ALUMINUM BRIDGE RAILING	
BRIDGE STD. BR2	ALUMINUM BRIDGE RAILING DETAILS	
BRIDGE STD. BR3	STEEL BRIDGE RAILING	
BRIDGE STD. BR4	STEEL BRIDGE RAILING DETAILS	
BRIDGE STD. BR5	RAILING CONNECTION DETAILS	
BRIDGE STD. BR6	RAILING CONNECTION DETAILS	
BRIDGE STD. C1	MISCELLANEOUS DETAILS	
BRIDGE STD. C2	MISCELLANEOUS DETAILS	
BRIDGE STD. C3	MISCELLANEOUS DETAILS	
BRIDGE STD. C4	MISCELLANEOUS DETAILS	
BRIDGE STD. D	CASTING DETAILS ROADWAY DRAINS	
BRIDGE STD.		
BRIDGE STD. PB	PRESTRESSED CONCRETE TYPE I-BEAMS	
BRIDGE STD. PB	PRESTRESSED CONCRETE TYPE I-BEAMS	
BRIDGE STD. PB6	PRESTRESSED BOX BEAMS	
BRIDGE STD. PB	PRESTRESSED COMPOSITE BOX BEAMS WIDE	
BRIDGE STD. PB	PRESTRESSED COMPOSITE BOX BEAMS WIDE	
BRIDGE STD. PB10	TOLERANCES FOR FABRICATION OF PRESTRESSED BEAMS	
BRIDGE STD. PB11	ELASTOMERIC BEARING PAD DETAILS	
BRIDGE STD.		
BRIDGE STD. R2A	BRIDGE LIGHTING DETAILS	
BRIDGE STD. R2B		
BRIDGE STD. S1	MISCELLANEOUS DETAILS	
BRIDGE STD. SH1	STEEL SHOE DETAILS	
BRIDGE STD. T SHEET A	STANDARD TEMPORARY BRIDGE	
BRIDGE STD. T SHEET B	STANDARD TEMPORARY BRIDGE	
BRIDGE STD.		
BRIDGE STD.		
BRIDGE STD.		
BRIDGE STD.		
BRIDGE STD.		
ROAD STD. SHEET A	STANDARD PAVEMENT JOINTS	
ROAD STD. SHEET B	STANDARD PAVEMENT JOINTS	
ROAD STD. SHEET MA	MISCELLANEOUS STANDARDS	
ROAD STD. SHEET MA	MISCELLANEOUS STANDARDS	
ROAD STD. SHEET MB	MISCELLANEOUS STANDARDS	
ROAD STD. SHEET MB2	MISCELLANEOUS STANDARDS	
ROAD STD. SHEET MC	MISCELLANEOUS STANDARDS	
ROAD STD. SHEET MC1	MISCELLANEOUS STANDARDS	
ROAD STD. SHEET MD	MISCELLANEOUS STANDARDS	
ROAD STD. SHEET MD	MISCELLANEOUS STANDARDS	
ROAD STD. SHEET MD	MISCELLANEOUS STANDARDS	
ROAD STD. SHEET ME	MISCELLANEOUS STANDARDS	
ROAD STD. SHEET ME	MISCELLANEOUS STANDARDS	
ROAD STD. SHEET ME	MISCELLANEOUS STANDARDS	
ROAD STD. SHEET MH	MISCELLANEOUS STANDARDS	
ROAD STD. SHEET MH	MISCELLANEOUS STANDARDS	
ROAD STD. SHEET MI	MISCELLANEOUS STANDARDS	
ROAD STD. SHEET	MISCELLANEOUS STANDARDS	
ROAD STD. SHEET	MISCELLANEOUS STANDARDS	
ROAD STD. SHEET MN	MISCELLANEOUS STANDARDS	
ROAD STD. SHEET	MISCELLANEOUS STANDARDS	
ROAD STD. SHEET	MISCELLANEOUS STANDARDS	
ROAD STD. SHEET MP	MISCELLANEOUS STANDARDS	
ROAD STD. SHEET	MISCELLANEOUS STANDARDS	
ROAD STD. SHEET MQ	MISCELLANEOUS STANDARDS	
ROAD STD. SHEET MR	MISCELLANEOUS STANDARDS	
ROAD STD. SHEET		
ROAD STD.	STANDARD REINF. CONCRETE BOX CULVERTS	
ROAD STD.	STANDARD REINF. CONCRETE CULVERTS	
ROAD STD. SHEET GR	GUARD RAIL CLASS	
ROAD STD. SHEET GR	GUARD RAIL CLASS	
ROAD STD. SHEET GR	GUARD RAIL CLASS	
ROAD STD. SHEET GR5	ALUMINUM GUARD RAIL DETAILS	
ROAD STD. SHEET GR6	STEEL TUBE GUARD RAIL DETAILS	
ROAD STD. SHEET GR		
ROAD STD. SHEET GR10	GUARD RAIL BURIED ENDS	
ROAD STD.		
ROAD STD. SHEET 0	TRAFFIC SIGN DETAILS	
ROAD STD. SHEET 1 DETOURS	STANDARD DETOUR SIGNS	
ROAD STD. SHEET 1A DETOURS	STANDARD DETOUR SIGNS	
ROAD STD. SHEET 1B DETOURS	STANDARD DETOUR SIGNS	
ROAD STD. SHEET 2 DETOURS	STANDARD DETOUR SIGNS	
ROAD STD. SHEET 2A DETOURS	STANDARD DETOUR SIGNS	
ROAD STD. SHEET 3 DETOURS	STANDARD DETOUR SIGNS	
ROAD STD. SHEET 3A DETOURS	STANDARD DETOUR SIGNS	
ROAD STD. SHEET 4 DETOURS	STANDARD DETOUR SIGNS	
ROAD STD. SHEET 5 DETOURS	STANDARD DETOUR SIGNS	
ROAD STD. SHEET 5A DETOURS	STANDARD DETOUR SIGNS	

H. Stewart Kline & Assoc. Inc.
Consulting Engineers & Architects
106 South Sixteenth Street
Lafayette, Indiana 47905

REVISIONS		
DATE	REVISIONS	SHEET NO.
2/24/84	REV. BY LITTLE CHICAGO ROAD	4
3/6/84	REVISED PLAT 1 R'S	3
4/17/84	REV. R/W RI Sta. 17-18	3 & 4
4/17/84	REV. AREAS PARCEL 2	2
9-11-84	Added Sign	

REVISIONS		
DATE	REVISIONS	SHEET NO.

INDIANA STATE HIGHWAY COMMISSION
STANDARD SPECIFICATIONS DATED 1978
TO BE USED WITH THESE PLANS

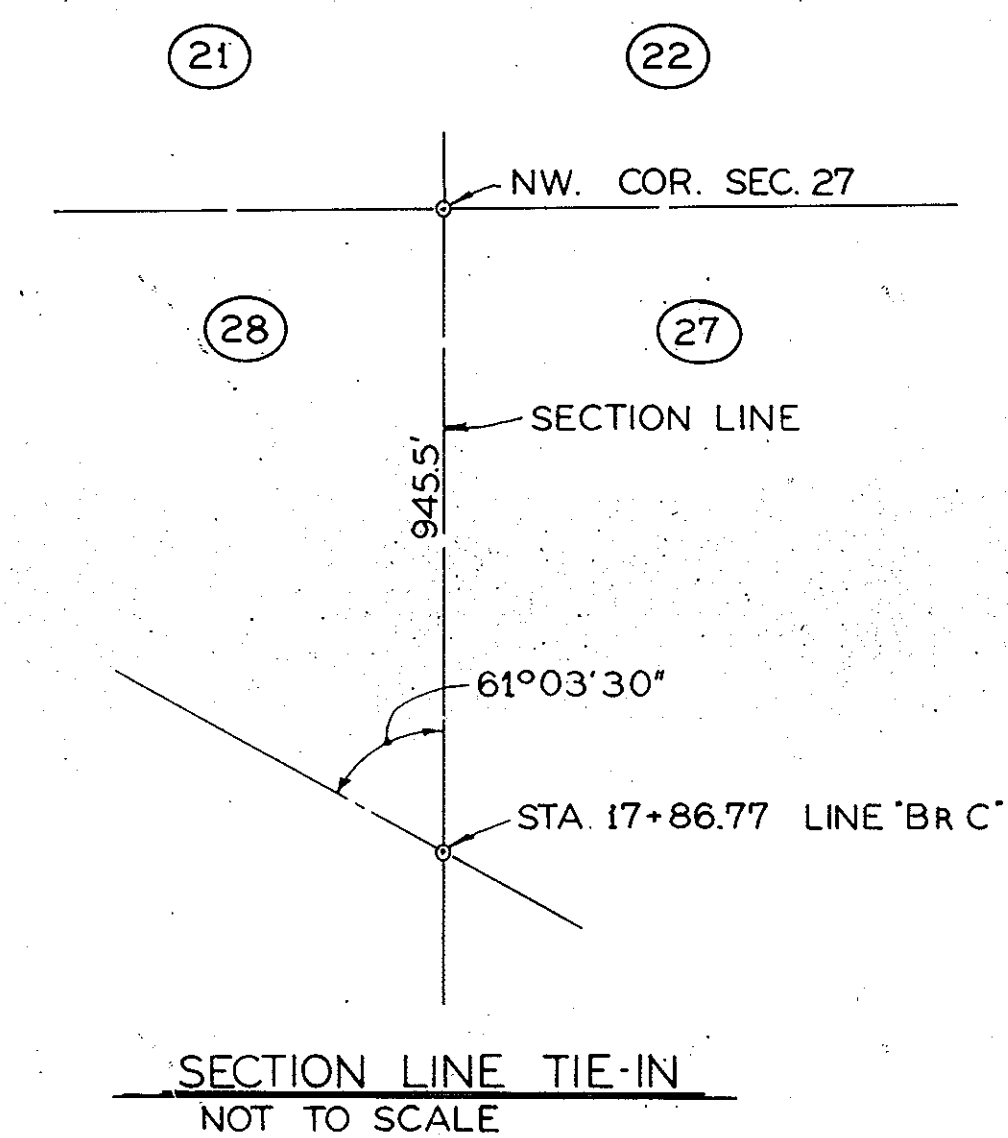
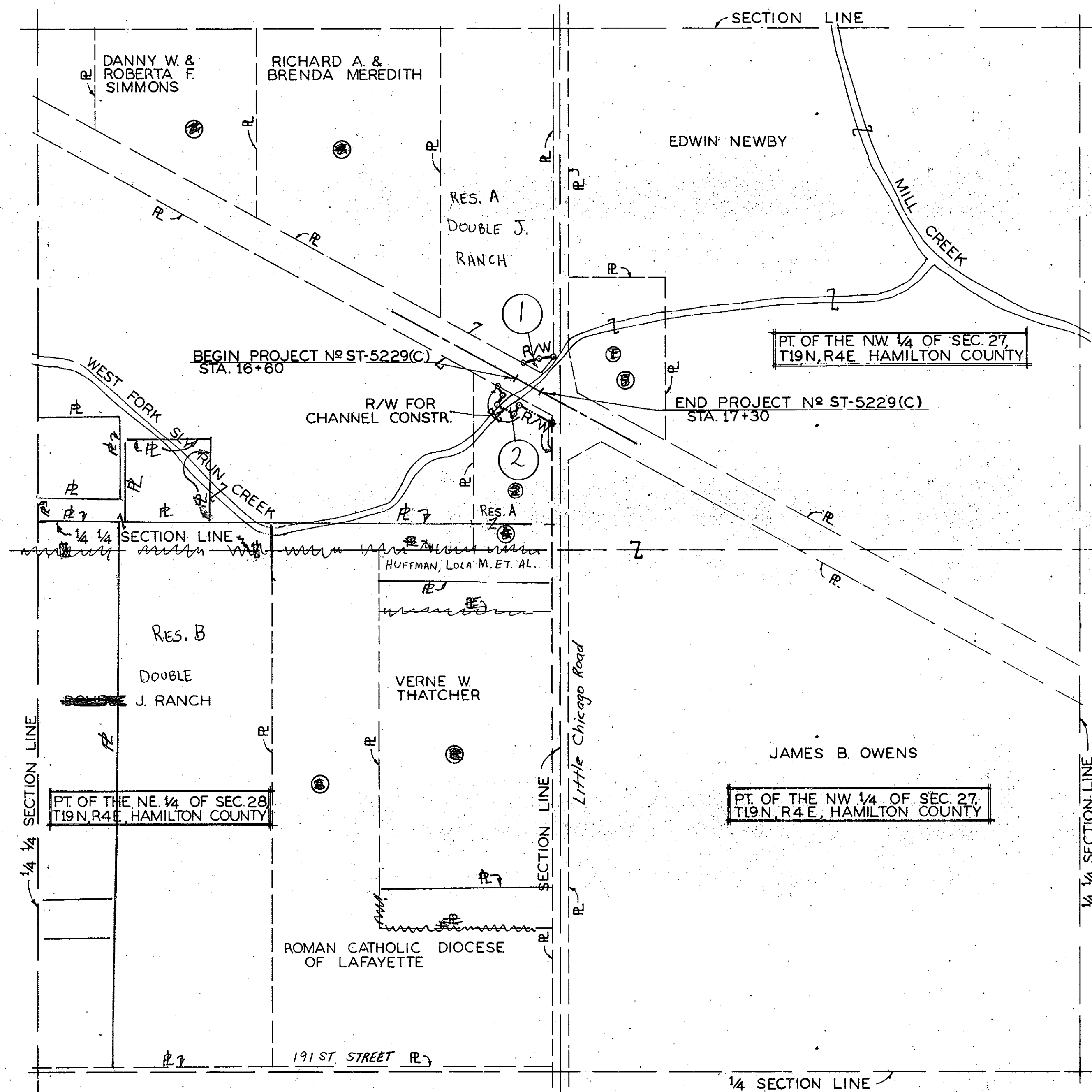
RECOMMENDED FOR APPROVAL 3-14-84
William B. Abbott
ENGINEER OF BRIDGE DESIGN - INDIANA DEPT. OF HIGHWAYS

APPROVED 3-16-84
Joe K. Hall
CHIEF HIGHWAY ENGINEER - INDIANA DEPT. OF HIGHWAYS

RIGHT OF WAY PLAN ONLY
FEDERAL HIGHWAY ADMINISTRATION
DEPARTMENT OF TRANSPORTATION

APPROVED
DIVISION ENGINEER
DATE

FEDERAL ROAD REGION NO.	STATE	PROJECT NO.	FISCAL YEAR	SHEET NO.	TOTAL SHEETS
5	IND.	ST-5229(C)	1984	3	6



- ⊙ MARTIN B. CAMMACK
- ⊙ LOLA M. HUFFMAN
- ⊙ PT. OF THE NE 1/4 OF SEC. 28, T19N, R4E, HAMILTON COUNTY
- ⊙ PT. OF THE NW 1/4 OF SEC. 27, T19N, R4E, HAMILTON COUNTY

DESIGNED	TLP	C'K'D
DRAWN	TLP	C'K'D
TRACED	TLP	C'K'D

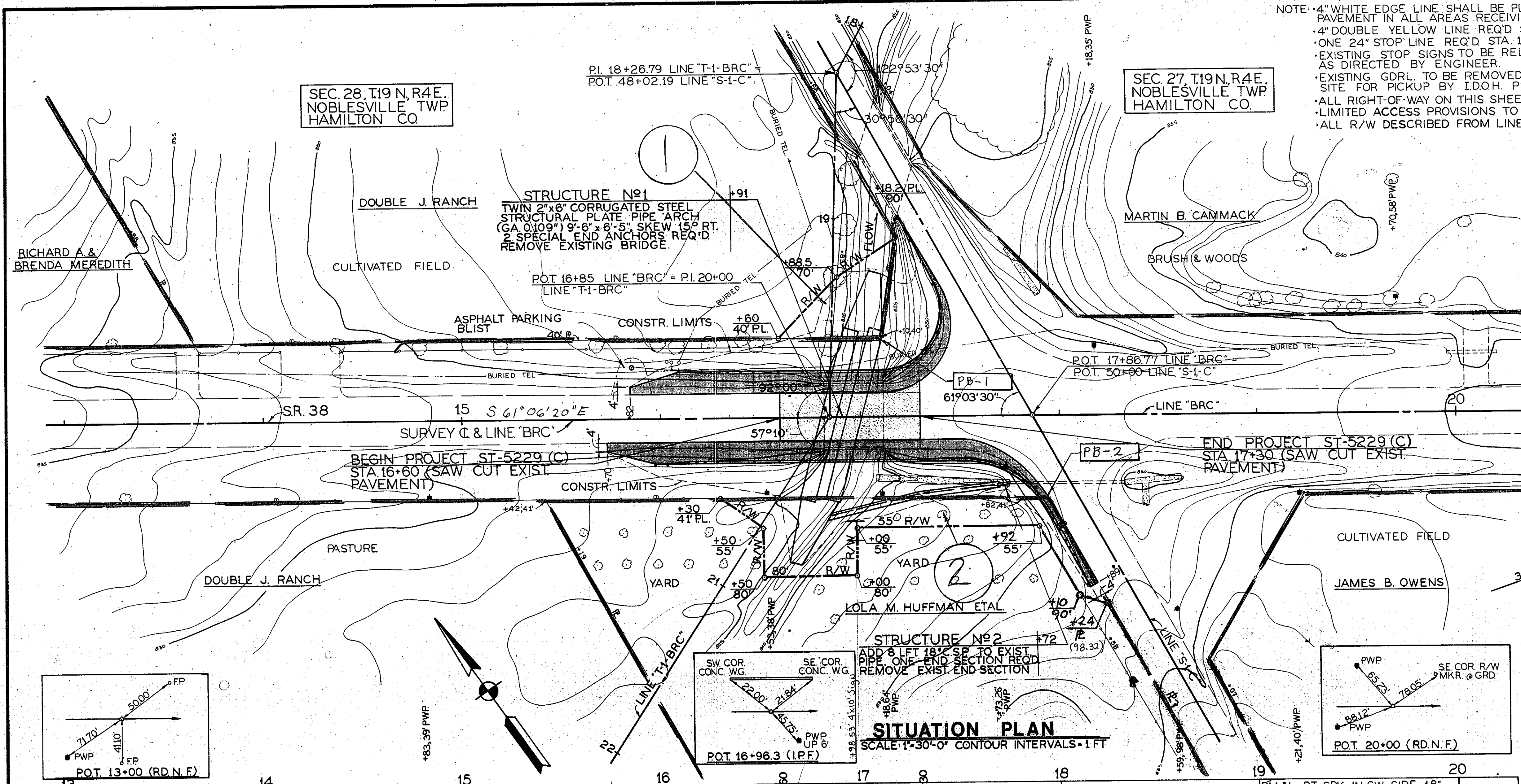
R/W PLAT NO 1 INDIANA DEPT. OF HIGHWAYS

SCALE:- 1" = 200'

DATE:-

SENIOR DESIGNER
 DRAWING: OF SHEET: 3 OF 6
 PROJECT: ST-5229 (C)
 CONTRACT NO.
 BRIDGE FILE: 38-29-6905

FEDERAL ROAD REGION NO.	STATE	PROJECT NO.	FISCAL YEAR	SHEET NO.	TOTAL SHEETS
5	IND.	ST-5229(C)	1984	3	6



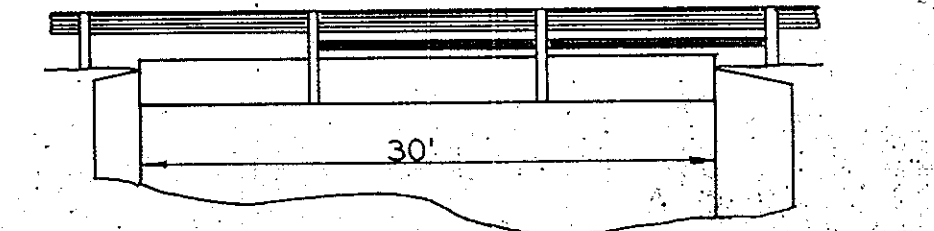
NOTE: 4" WHITE EDGE LINE SHALL BE PLACED ON EDGE PAVEMENT IN ALL AREAS RECEIVING NEW SHOULDERS.
 4" DOUBLE YELLOW LINE REQ'D STA. 16+00 TO STA. 17+60.
 ONE 24" STOP LINE REQ'D STA. 17+60 RT.
 EXISTING STOP SIGNS TO BE RELOCATED BY CONTRACTOR AS DIRECTED BY ENGINEER.
 EXISTING GDRL TO BE REMOVED AND STORED AT JOB SITE FOR PICKUP BY IDOH. PERSONNEL.
 ALL RIGHT-OF-WAY ON THIS SHEET TO BE AS SHOWN.
 LIMITED ACCESS PROVISIONS TO APPLY WHERE INDICATED.
 ALL R/W DESCRIBED FROM LINE "BRC".

UTILITIES

PUBLIC SERVICE INDIANA
 1000 E. MAIN STREET
 PLAINFIELD, INDIANA

INDIANA BELL TELEPHONE
 N. RURAL STREET
 INDIANAPOLIS, INDIANA

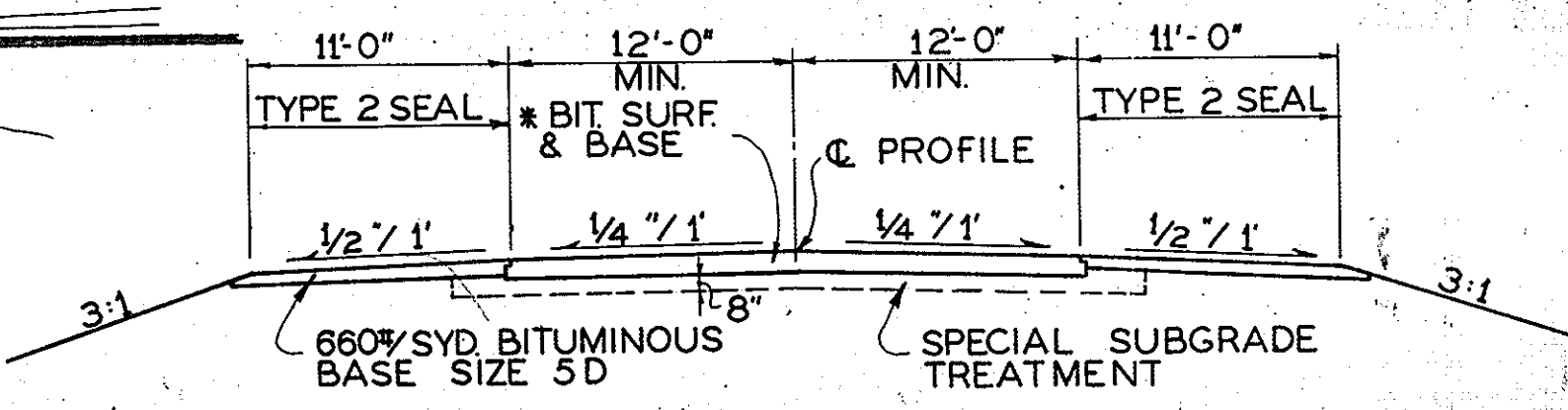
FEDERAL ROAD REGION NO.	STATE	PROJECT NO.	FISCAL YEAR	SHEET NO.	TOTAL SHEETS
5	IND.	ST-5229(C)	1984	4	6



INDICATES NEW BITUMINOUS PAVEMENT.
 INDICATES NEW 660% SYD BITUMINOUS BASE SIZE 5D FOR SHOULDERS

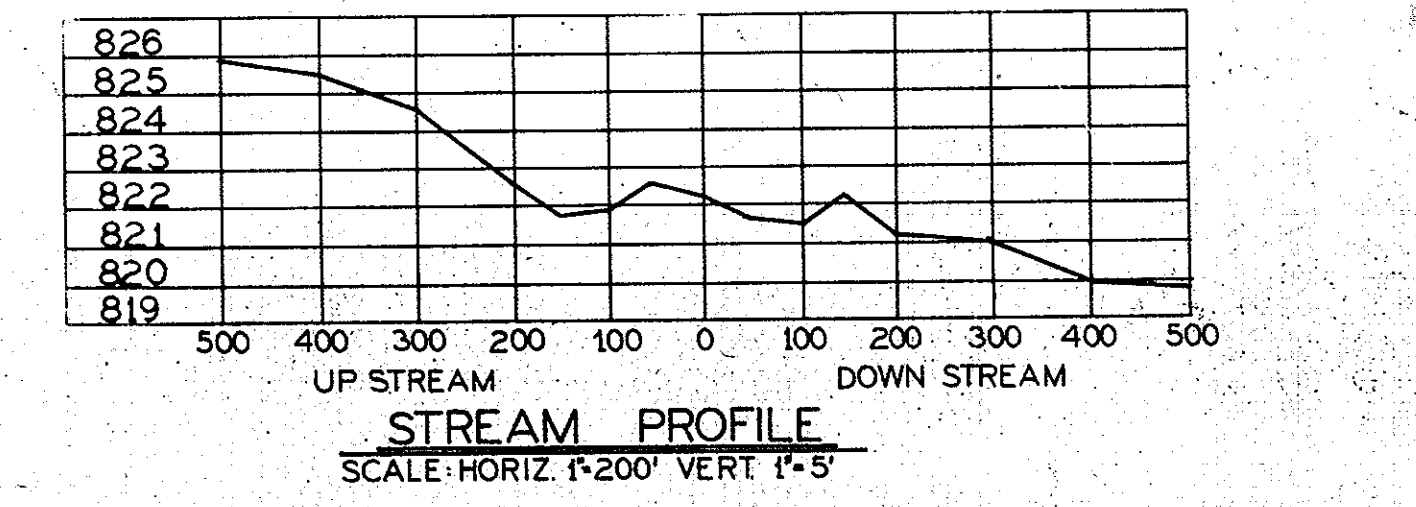
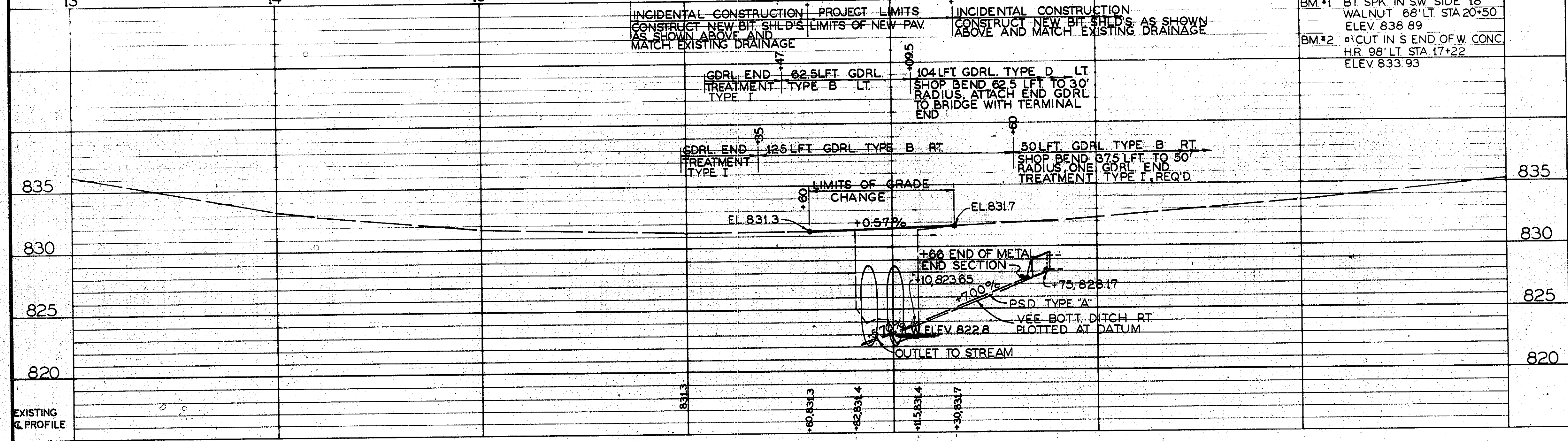
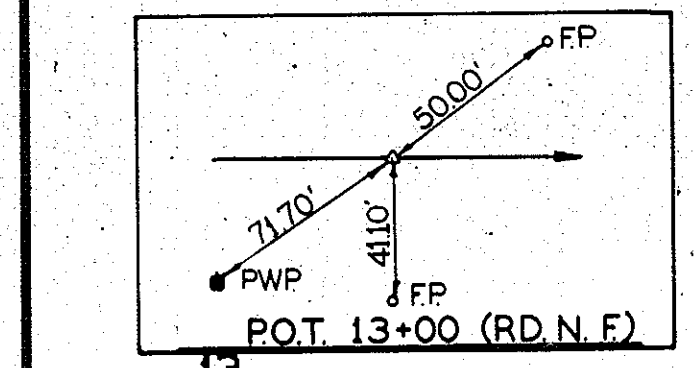
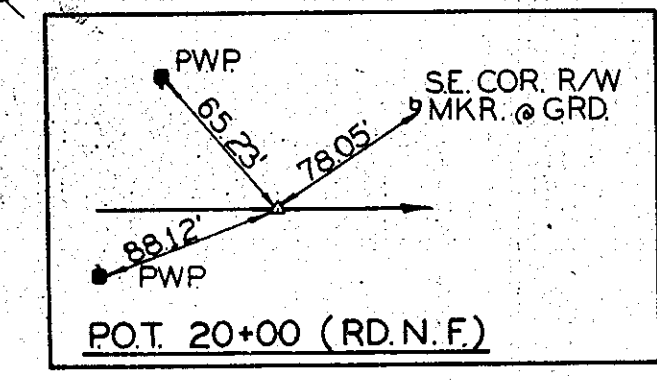
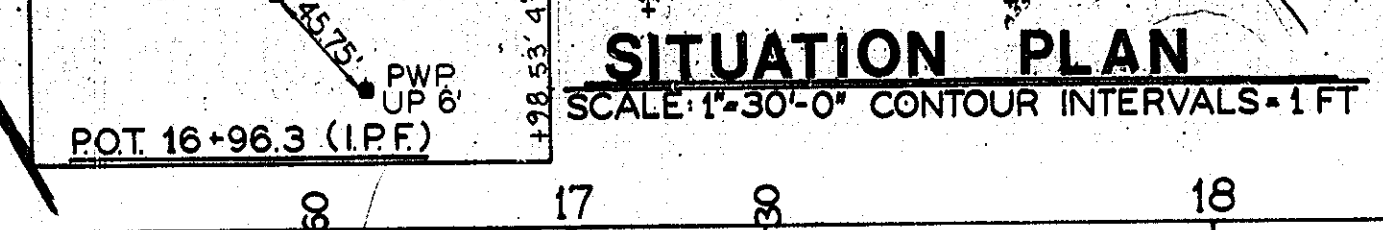
HYDRAULIC DATA

DRAINAGE AREA = 1.8 SQ. MI.
 Q₁₀ = 525 CFS
 Q₅₀ = 700 CFS



* 110% SYD. HOT ASPHALTIC CONC. SURFACE TYPE II B ON 1210% SYD. BITUMINOUS BASE

NOTE: UNLESS OTHERWISE SPECIFIED, THE CONTRACTOR SHALL HAVE THE OPTION OF USING EITHER HOT ASPHALTIC CONCRETE (H.A.C.) OR HOT ASPHALTIC EMULSION (H.A.E.) ON ALL BITUMINOUS ITEMS EXCEPT SURFACE.



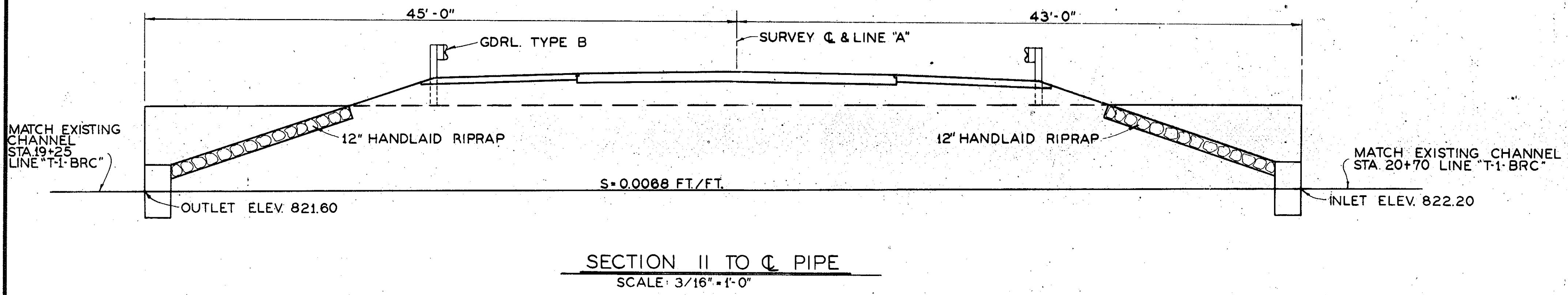
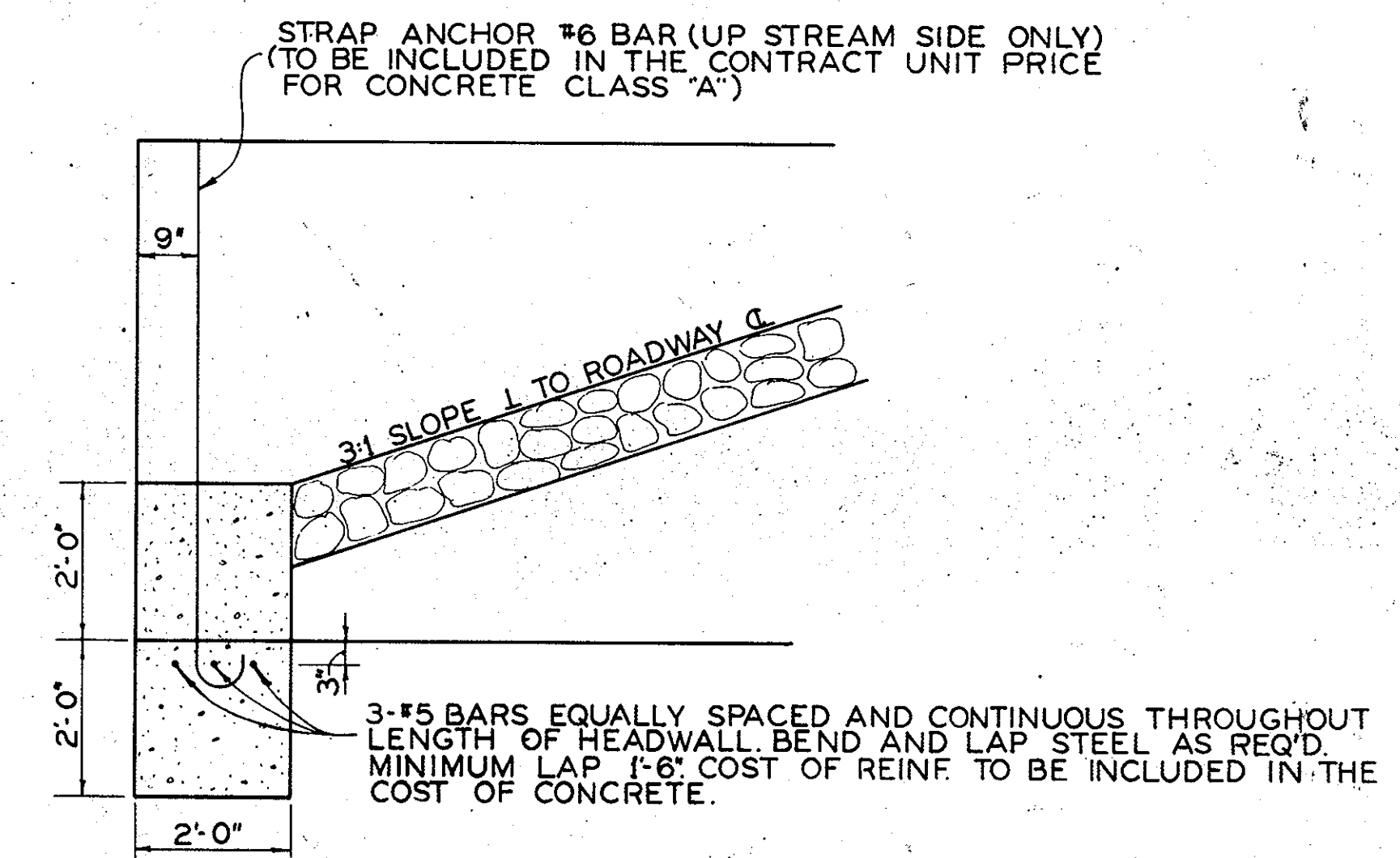
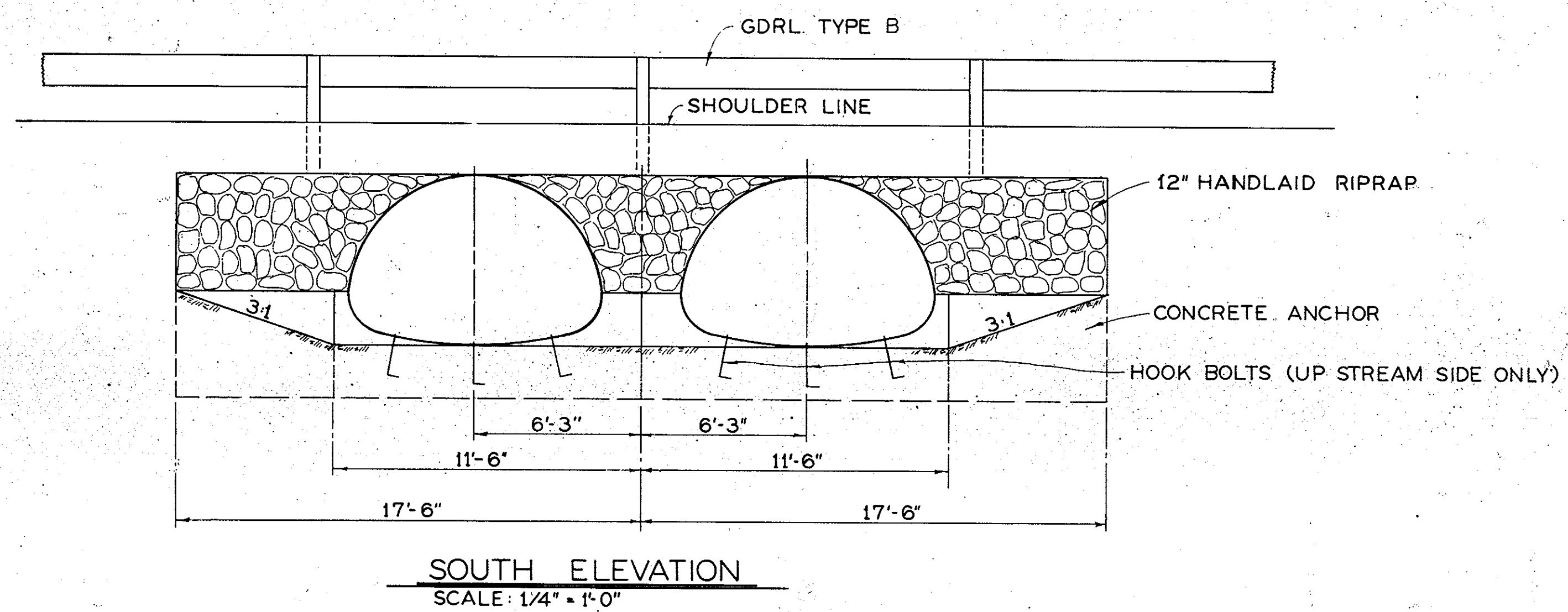
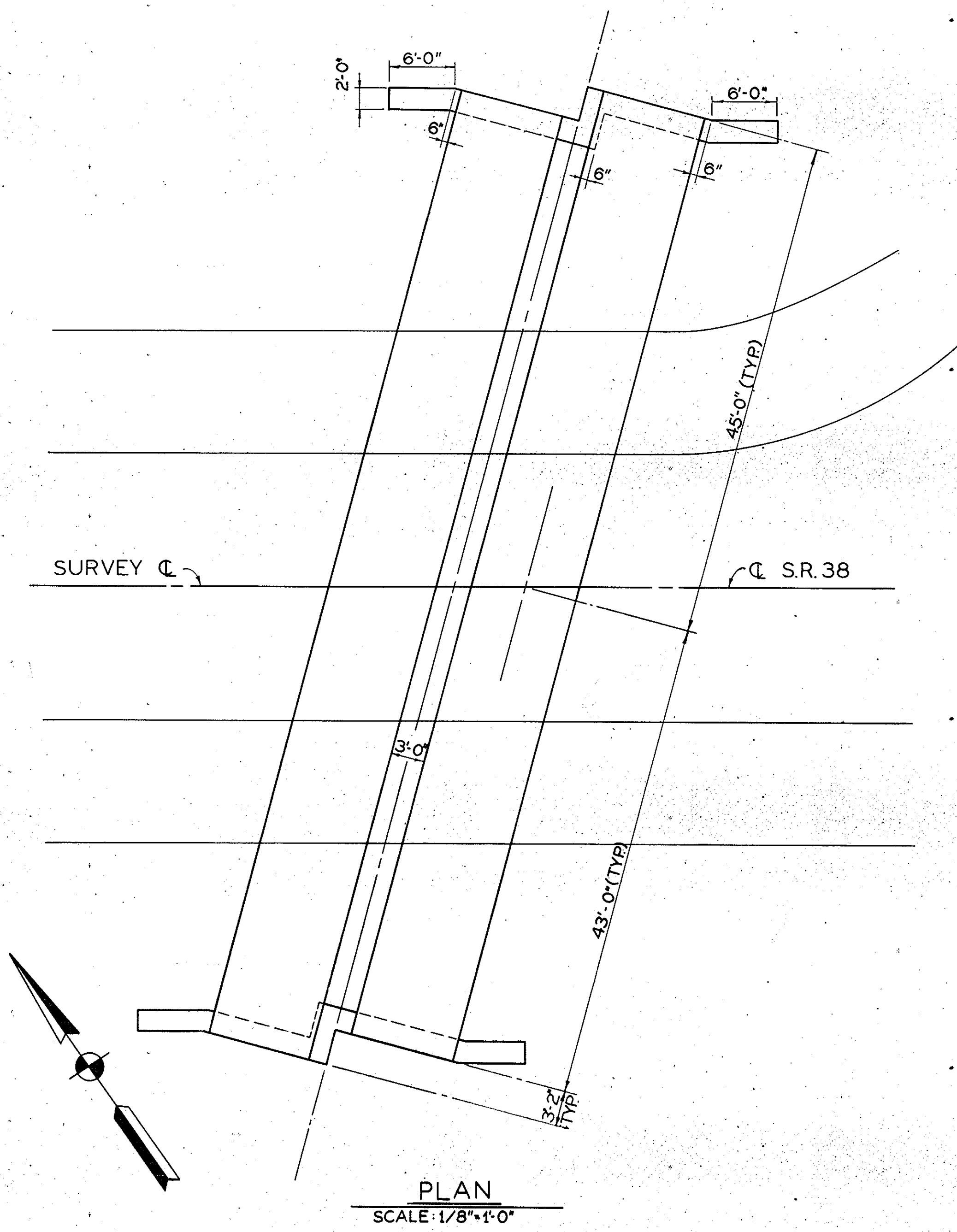
LAYOUT
INDIANA DEPT. OF HIGHWAYS

SCALE: - DATE: -
 SENIOR DESIGNER
 DRAWING: OF SHEET: 4 OF 6
 PROJECT: ST-5229 (C)
 CONTRACT NO.
 BRIDGE FILE: 38-29-6905

DESIGNED: C.K.D.
 DRAWN: T.L.P.
 TRACED: C.K.D.

PROFILE ON PROPOSED ROADWAY
 SCALE: HORIZ. 1"=30'-0" VERT. 1"=10'-0"

FEDERAL ROAD REGION NO.	STATE	PROJECT NO.	FISCAL YEAR	SHEET NO.	TOTAL SHEETS
5	IND.	ST-5229(C)	1984	4	6



8.84 CYS. CONCRETE CLASS "A" REQ'D PER END ANCHOR

CORRUGATED STEEL STRUCTURAL PLATE PIPE ARCH DETAILS

TWIN 2"x6" CORRUGATED STEEL STRUCTURAL PLATE PIPE ARCH (GA.0.109")
SIZE 9'-6" x 6'-5", SKEW 15° RT.

INDIANA DEPT. OF HIGHWAYS
SCALE:- AS SHOWN DATE:-

DESIGNED: C.K.D.
DRAWN: TLP C.K.D.
TRACED: C.K.D.

SENIOR DESIGNER

DRAWING OF SHEET: 5 OF 6
PROJECT: ST-5229(C)
CONTRACT NO.
BRIDGE FILE: 38-29-6905

