

STATE OF INDIANA  
 STATE HIGHWAY COMMISSION

BRIDGE PLANS  
 FOR SPANS OVER 20 FEET  
 IN  
 VINCENNES DISTRICT

PORTAL AND SWAY FRAME REVISIONS TO STEEL TRUSS BRIDGES

INDEX

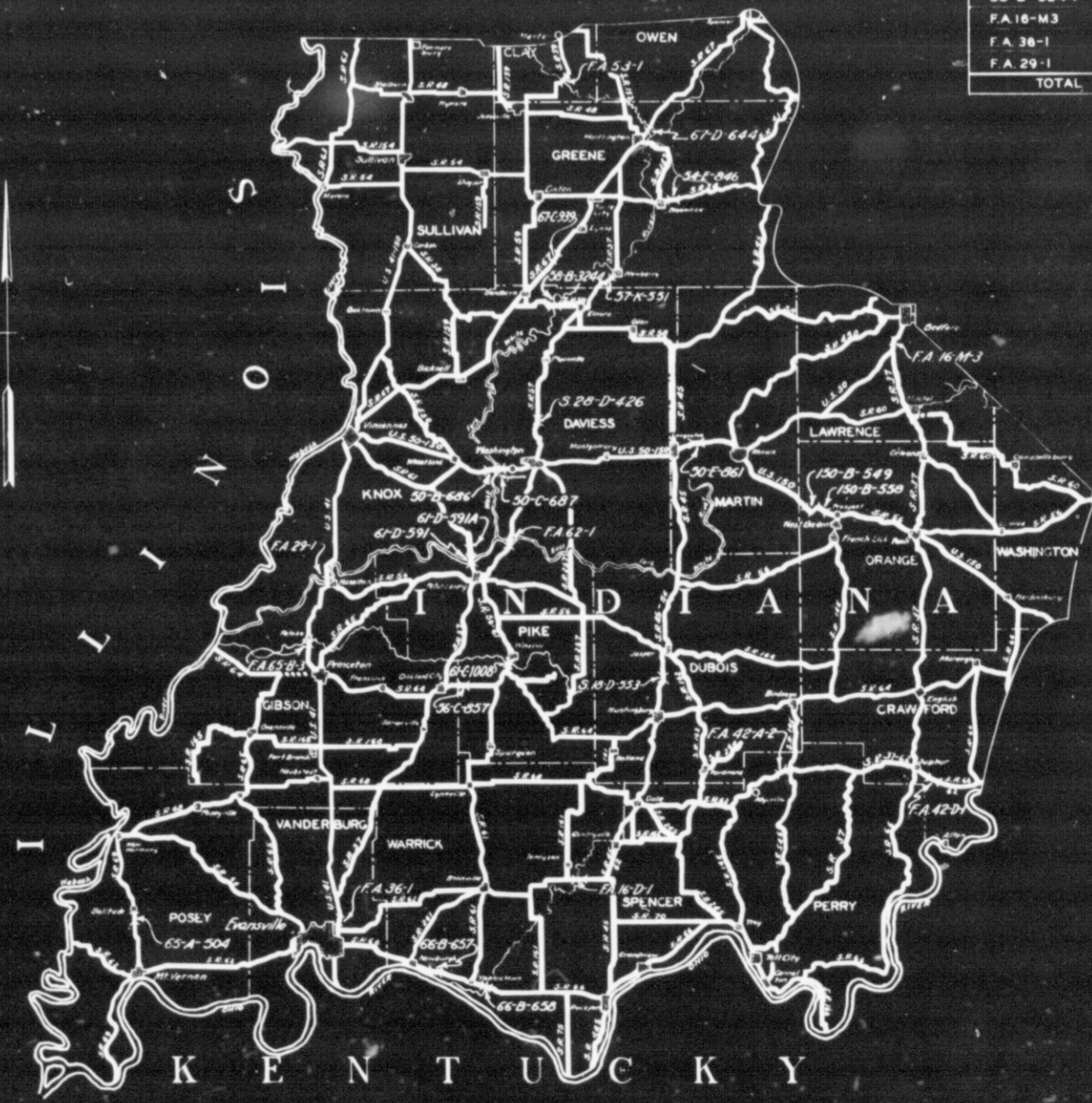
SHEET NO.	SUBJECT	DESIGNATION OF ORIGINAL PLANS
1	INDEX, TITLE & SUMMARY SHEET	
2	PORTAL REVISIONS	124'-0" STEEL TRUSS 20'-0" ROWDY DATED AUG. 1, 1923
3	SWAY FRAME REVISIONS	124'-0" " " 20'-0" " DATED AUG. 1, 1923
4	PORTAL REVISIONS	150'-0" " " 22'-0" " STANDARD NO. 422
5	PORTAL REVISIONS	150'-0" " " 20'-0" " DATED APRIL 1, 1924
6	PORTAL REVISIONS	175'-0" " " 20'-0" " DATED MARCH 1, 1924
7	PORTAL REVISIONS	198'-0" " " 20'-0" " STANDARD NO. 431
8	PORTAL REVISIONS	124'-0" " " 20'-0" " DATED AUG. 1, 1923
9	PORTAL REVISIONS	124'-0" " " 20'-0" " F.A. 16-D-1
10	SWAY FRAME REVISIONS	124'-0" " " 20'-0" " F.A. 16-D-1
11	PORTAL REVISIONS	100'-0" " " 20'-0" " DATED MARCH 1, 1924
12	PORTAL REVISIONS	150'-0" " " 20'-0" " F.A. 53-1
13	PORTAL REVISIONS	197'-11" " " 18'-0" " 58-B-3244
14	PORTAL REVISIONS	198'-0" " " 20'-0" " F.A. 16-M-3, F.A. 36-1 & F.A. 53-1
15	PORTAL REVISIONS	198'-0" " " 20'-0" " F.A. 29-1
16	PORTAL REVISIONS	124'-0" " " 22'-0" " STANDARD NO. 419
17	SWAY FRAME REVISIONS	124'-0" " " 22'-0" " STANDARD NO. 419
18	PORTAL REVISIONS	150'-0" " " 20'-0" " F.A. 21-E-9
19	SWAY FRAME REVISIONS	150'-0" " " 20'-0" " F.A. 21-E-9
20	PORTAL REVISIONS	150'-0" " " 22'-0" " DATED JAN. 6, 1925
21	PORTAL REVISIONS	150'-0" " " 22'-0" " DATED MAY 11, 1927
22	PORTAL REVISIONS	185'-0" " " 20'-0" " DATED AUG. 11, 1923
23	SUMMARY	

SUMMARY OF QUANTITIES

STRUCTURE NO.	STRUCTURAL STEEL (LBS.)	RIVETS REMOVED	HOLES DRILLED	FLAME CUTTING (SQ. FT.)	SALVAGED STEEL (LBS.)
FA 42-A-2	684	148	12	137	1921
518-D-553	684	148	12	137	1921
528-D-426	684	148	12	137	1921
56-C-857	684	148	12	137	1921
50-E-861	541	76	16	46	368
57-K-551	698	68	16	63	645
61-D-591A	4188	408	96	378	3670
66-B-658	1396	136	32	126	1290
65-A-504	698	68	16	63	645
FA 42-D-1	457	44	12	54	581
54-E-846	457	44	12	54	581
66-B-657	914	89	24	108	1162
150-B-558	457	44	12	54	581
50-B-686	1512	144	24	159	1716
50-C-687	1512	144	24	159	1716
150-B-549	304	48	8	53	572
61-D-591	1487	144	24	162	1728
FA 65-B-3	489	48	8	54	576
67-D-644	1586	176	40	138	1488
FA 62-1	1956	192	32	216	2304
FA 16-D-1	729	148	16	138	1907
FA 53-1	1143	116	28	141	1237
58-B-3244	1374	120	48	186	1407
FA 16-M-3	1632	176	48	220	2328
FA 36-1	458	44	12	55	582
FA 29-1	1880	176	48	220	2360
TOTAL	28963	3244	644	3397	37348

LIST OF STRUCTURES

STRUCTURE NO.	SPANS	OVER	COUNTY	LOCATION
62-J	1 @ 124'	ANDERSON RIVER	PERRY	8.0 MI. N.E. OF ADYVILLE
45-D	1 @ 124', 5 @ 36'	PATOKA RIVER	DUBOIS	3.0 MI. S. OF JASPER
57-H	60 @ 124'-60'	PRAIRIE CREEK	DAVISS	4.0 MI. N. OF WASHINGTON
64-C	1 @ 124'	SHY DREDGE DITCH	PIKE	1.0 MI. E. OF OAKLAND CITY
50-E	45 @ 150'-45 @ 198'	BOGGS CREEK	MARTIN	2.0 MI. E. OF LOGGWOODLEE
57-K	1 @ 150'	FIRST CREEK	GREENE	1.0 MI. SW. OF NEWBERRY
61-D	6 @ 150'	WHITE RIVER OVERFLOW	KNOX	2.0 MI. N. OF PETERSBURG
66-D	2 @ 150'	LITTLE TIGEON CREEK	WARRICK	1.7 MI. E. OF YANKEETOWN
69-B	1 @ 150'	BIG CREEK	POSEY	0.1 MI. S. OF SULTZIDE
62-L	1 @ 175'	LITTLE BLUE RIVER	CRAWFORD	0.75 MI. E. OF SU. PHUR
54-E	84 @ 175'	RICHLAND CREEK	GREENE	1.0 MI. E. OF BUDMFIELD
66-D	2 @ 75'	CYPRESS CREEK	WARRICK	2.0 MI. SE. OF NEWBURG
150-B	1 @ 175'	LOST RIVER	ORANGE	1.0 MI. NW. OF WEST BADEN
50-B	3 @ 198'	WHITE RIVER OVERFLOW	KNOX & DAVISS	3.5 MI. E. OF WHEATLAND
50-C	3 @ 198'	WHITE RIVER	DAVISS	0.5 MI. W. OF MARSHVILLE
150-B	1 @ 198'	LOST RIVER	ORANGE	3.5 MI. W. OF PROSPECT
61-D	2 @ 84', 3 @ 198'	WHITE RIVER	PIKE & KNOX	1.0 MI. N. OF PETERSBURG
41-D	1 @ 198'	PATOKA RIVER	GIBSON	S.E. SECTION OF PATOKA
67-D	100 @ 98-100	ELL RIVER	GREENE	1.0 MI. E. OF WORTHINGTON
57-G	4 @ 198'	WHITE RIVER	DAVISS & PIKE	3.5 MI. N. OF PETERSBURG
67-G	1 @ 74'	LITTLE PIGEON CREEK	SPENCER	3.0 MI. SW. OF GENTRYVILLE
59-C	1 @ 198'-1 @ 150'	EEL RIVER	CLAY	6.0 MI. S. OF MARTZ
58-B	3 @ 197'-11"	WHITE RIVER (WEST FORK)	KNOX & DAVISS	2.0 MI. W. OF ELDORA
37-I	4 @ 198'	WHITE RIVER	LAWRENCE	4.0 MI. S. OF BELFORD
41-B	1 @ 198'	PIGEON CREEK	VANDERBURGH	1.5 MI. N. OF EVANSVILLE
41-E	4 @ 198'-4 @ 84'	WHITE RIVER	GIBSON	N. EDGE OF HAZELTON
67-L	1 @ 198'	PATOKA RIVER	PIKE	S. PART OF WINSLOW
67-L	1 @ 124'	BLACK CREEK	GREENE	1/4 MI. N.E. OF MARCO



NOTES

THIS CONTRACT INCLUDES ONLY THOSE STRUCTURES LISTED AND LOCATED ON THIS SHEET.  
 THE WORK INCLUDED IN THIS CONTRACT CONSISTS OF THE FOLLOWING:—  
 ON ALL OF THE STRUCTURES INCLUDED IN THIS CONTRACT, PORTAL MEMBERS WHICH ENCRUCH ON THE ROADWAY CLEARANCE ARE TO BE REMOVED AND ARE TO BE REPLACED WITH MEMBERS OUTSIDE THE CLEARANCE LINES.  
 ON CERTAIN OF THE STRUCTURES INCLUDED IN THIS CONTRACT, SWAY FRAME MEMBERS WHICH ENCRUCH ON THE ROADWAY CLEARANCE ARE TO BE REMOVED.  
 ALL NEW STRUCTURAL STEEL SHALL BE PAINTED ONE SHOP COAT OF RED LEAD AND ONE COAT OF BROWN FIELD PAINT AND ONE COAT OF BLACK FIELD PAINT.  
 SEE SPECIAL PROVISIONS REGARDING THE FOLLOWING ITEMS INCLUDED IN THIS CONTRACT—  
 STRUCTURAL STEEL ALLOWANCE FOR SALVAGED MATERIAL, FLAME CUTTING AND HOLES DRILLED.

REVISED 3-28-42

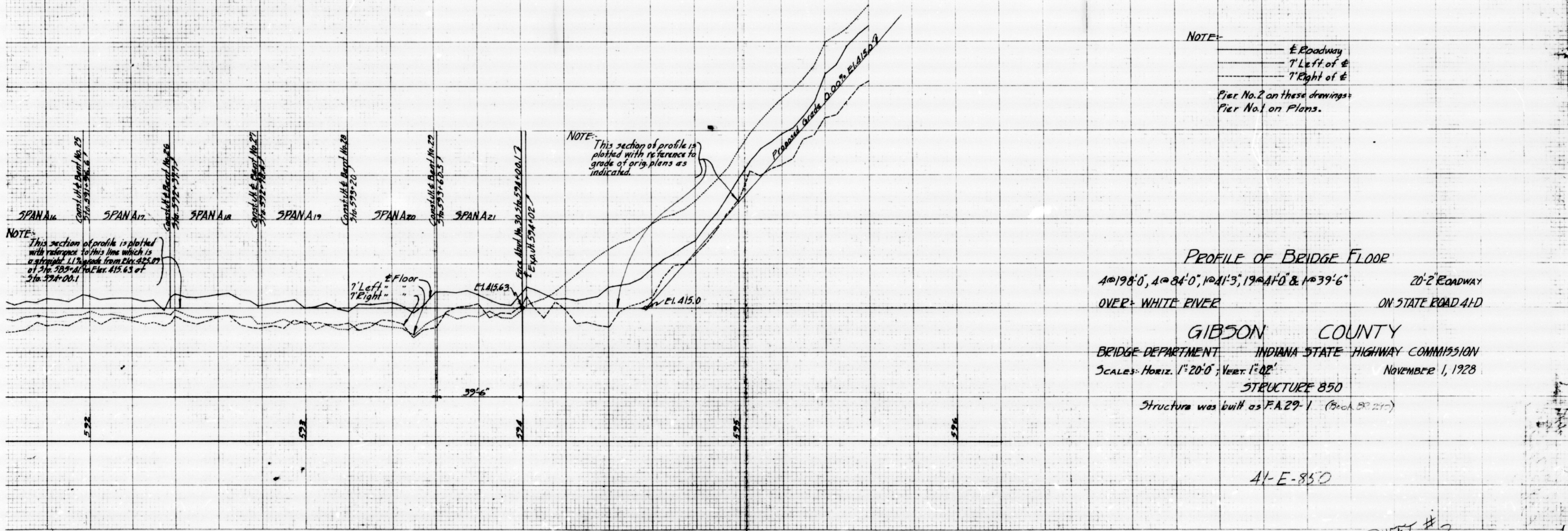
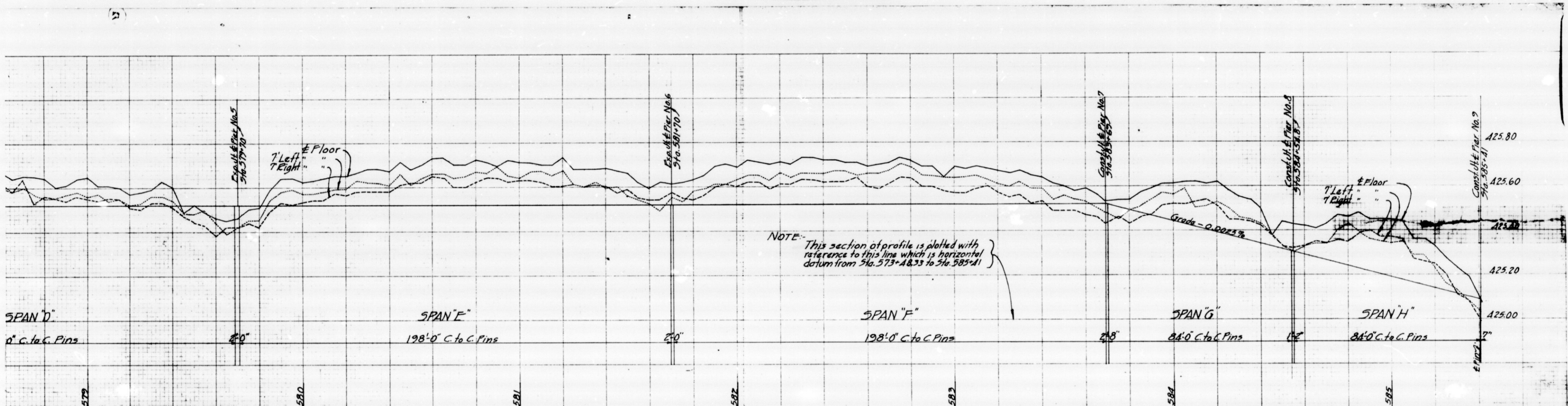
APPROVED AND ADOPTED 12-1-1941  
 BY STATE HIGHWAY COMMISSION OF INDIANA

*Samuel S. Hadden*  
 CHAIRMAN, STATE HIGHWAY COMMISSION OF INDIANA

APPROVED DECEMBER 1, 1941

*W. H. Kelly*  
 CHIEF ENGINEER, STATE HIGHWAY COMMISSION OF INDIANA





PROFILE OF BRIDGE FLOOR  
 4 @ 198' 0", 4 @ 84' 0", 1 @ 41' 3", 19 @ 41' 0" & 1 @ 39' 6"  
 20'-2" ROADWAY  
 OVER WHITE RIVER ON STATE ROAD 41-D

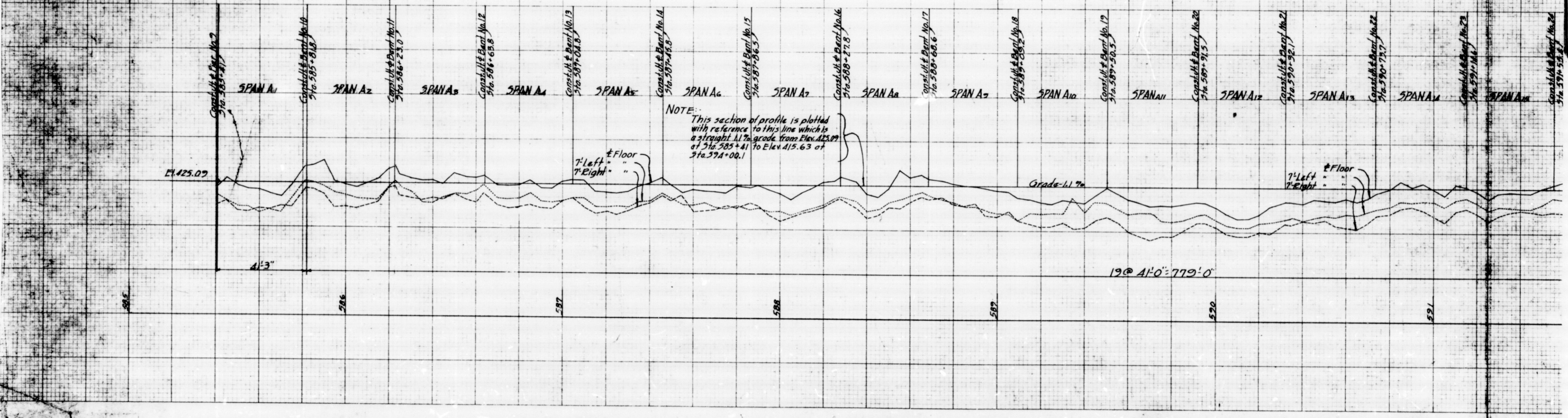
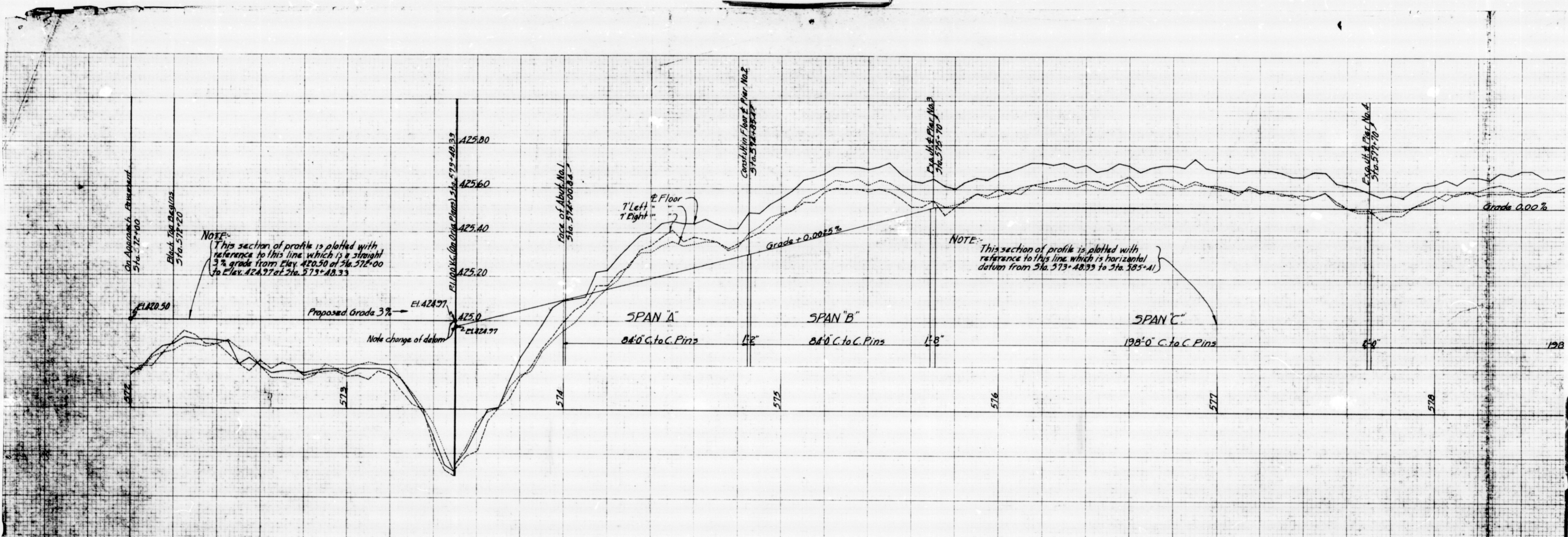
GIBSON COUNTY  
 BRIDGE DEPARTMENT INDIANA STATE HIGHWAY COMMISSION  
 SCALE: Horiz. 1"=20' 0", Vert. 1"=4' 0"  
 STRUCTURE 850  
 Structure was built as F.A. 29-1 (Bach. 80-210)

NOVEMBER 1, 1928

41-E-850

SHEET # 2





STANDARD CROSS SECTION 10 X 10  
 41-E-850

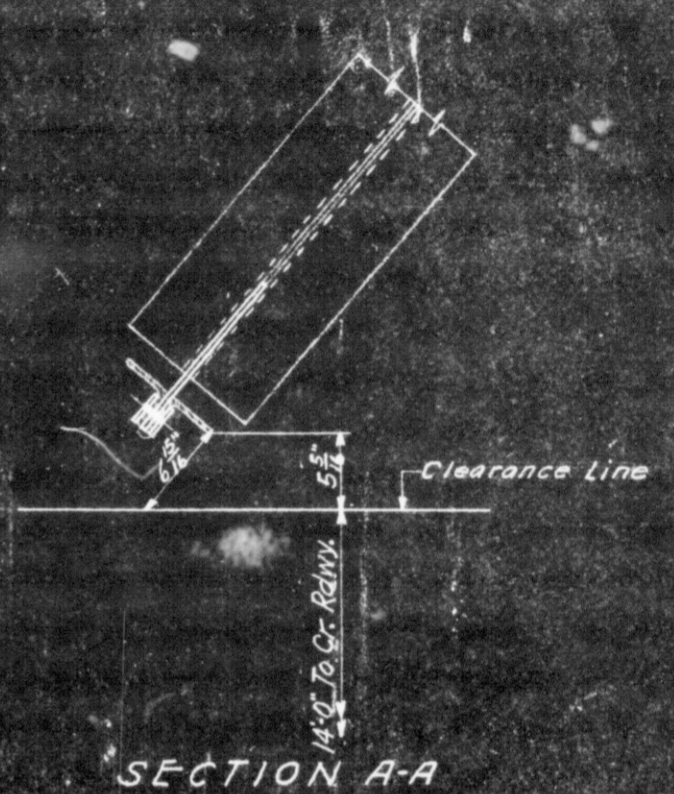
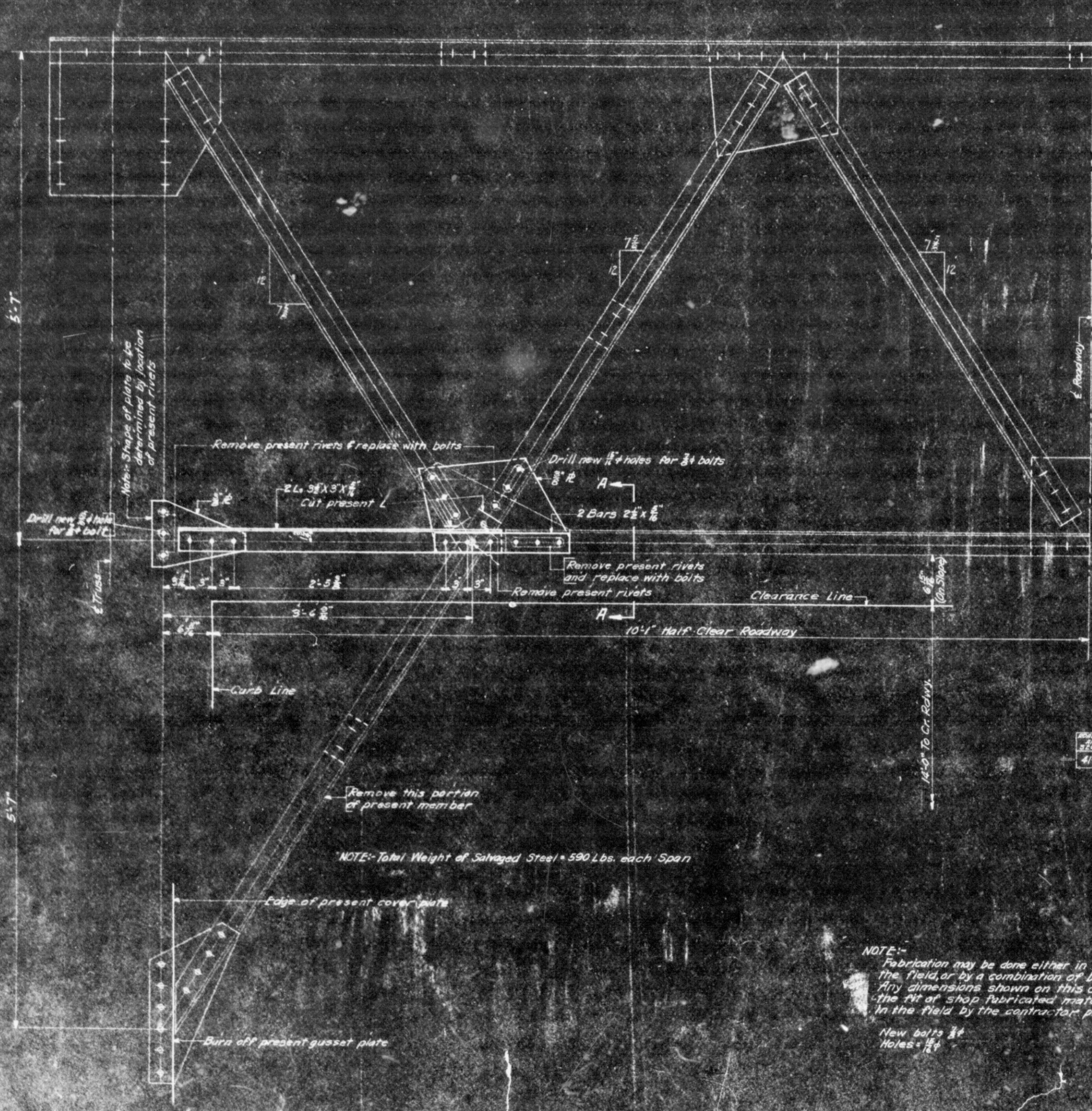
STANDARD CROSS SECTION 10 X 10  
 KEUFFEL & ESSER CO. - NEW YORK

STANDARD CROSS SECTION 10 X 10  
 41-E-850

STANDARD CROSS SECTION 10 X 10  
 KEUFFEL & ESSER CO. - NEW YORK

3  
 SHEET # 3





SECTION A-A

BILL OF MATERIALS FOR ONE SPAN

NO. OF SECTIONS	SECTION	LENGTH	TOTAL WEIGHT
8	Ls 9 1/2" X 3" X 3/8"	3'-8 1/2"	193#
4	12s 1 1/2" X 3"	1'-9"	116#
4	12s 9" X 3"	1'-1"	50#
8	Bars 2 1/2" X 3/8"	1'-6"	99#
24	3/4" Bolts (100% WASH. PA.)	0'-3"	27#
12	3/4" Bolts (100% WASH. PA.)	0'-2 1/2"	13#
36	3/4" Bolts (100% WASH. PA.)	0'-2 1/2"	36#
TOTAL			470#
Rivets to be removed in field			44
Holes to be drilled in field			12
Flame cutting in field			55 Sq. In.

THIS PORTAL USED ON THE FOLLOWING STRUCTURES

BRIDGE NO. SECTION	STRUCTURE NO.	SPANS OVER	COUNTY	LOCATION	DISTRICT
41-E	FA-29-1	40198'4084	White River	Gibson	North Edge of Hazelton Vincennes

NOTE: Total Weight of Salvaged Steel = 590 Lbs. each Span

NOTE: Fabrication may be done either in the shop or in the field, or by a combination of both methods. Any dimensions shown on this drawing affecting the fit of shop fabricated material shall be checked in the field by the contractor prior to fabrication.

New bolts 3/4"  
 Holes 1 1/2"

PORTAL REVISIONS  
 STATE HIGHWAY COMMISSION OF INDIANA

SPAN: 105'-8" STEEL TRUSS 80'-8" RDWY. DATED: FEB. 8, 1942  
 SCALE: 1" = 10'  
 NOV. 10, 1941  
 RECOMMENDED FOR APPROVAL



DESIGNED BY: [Name]  
 DRAWN BY: [Name]  
 CHECKED BY: [Name]