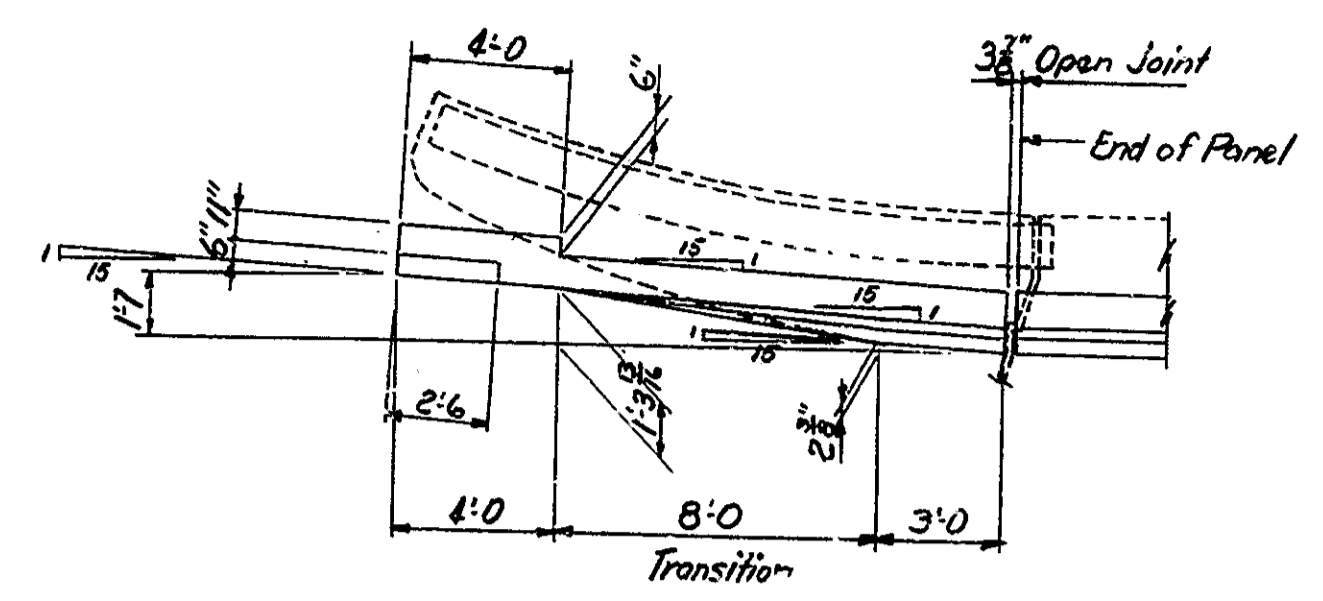
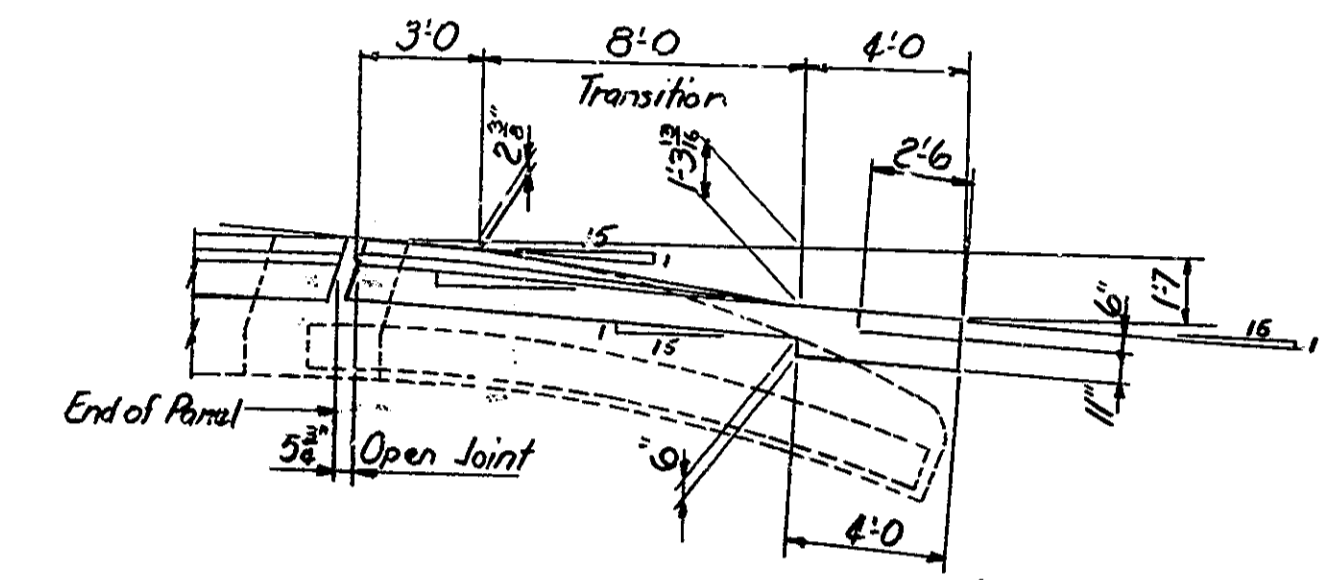


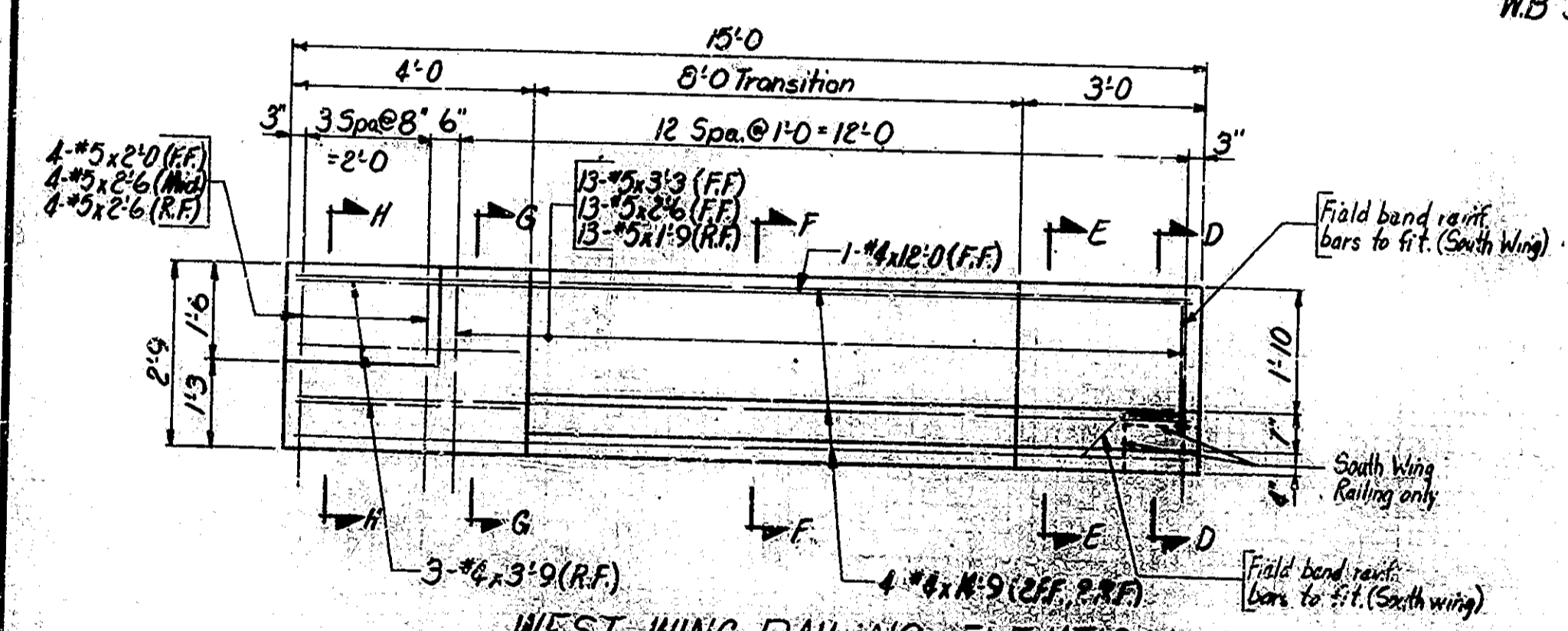
E.B. STRUCTURE PLAN
WB STRUCTURE SAME
No Scale



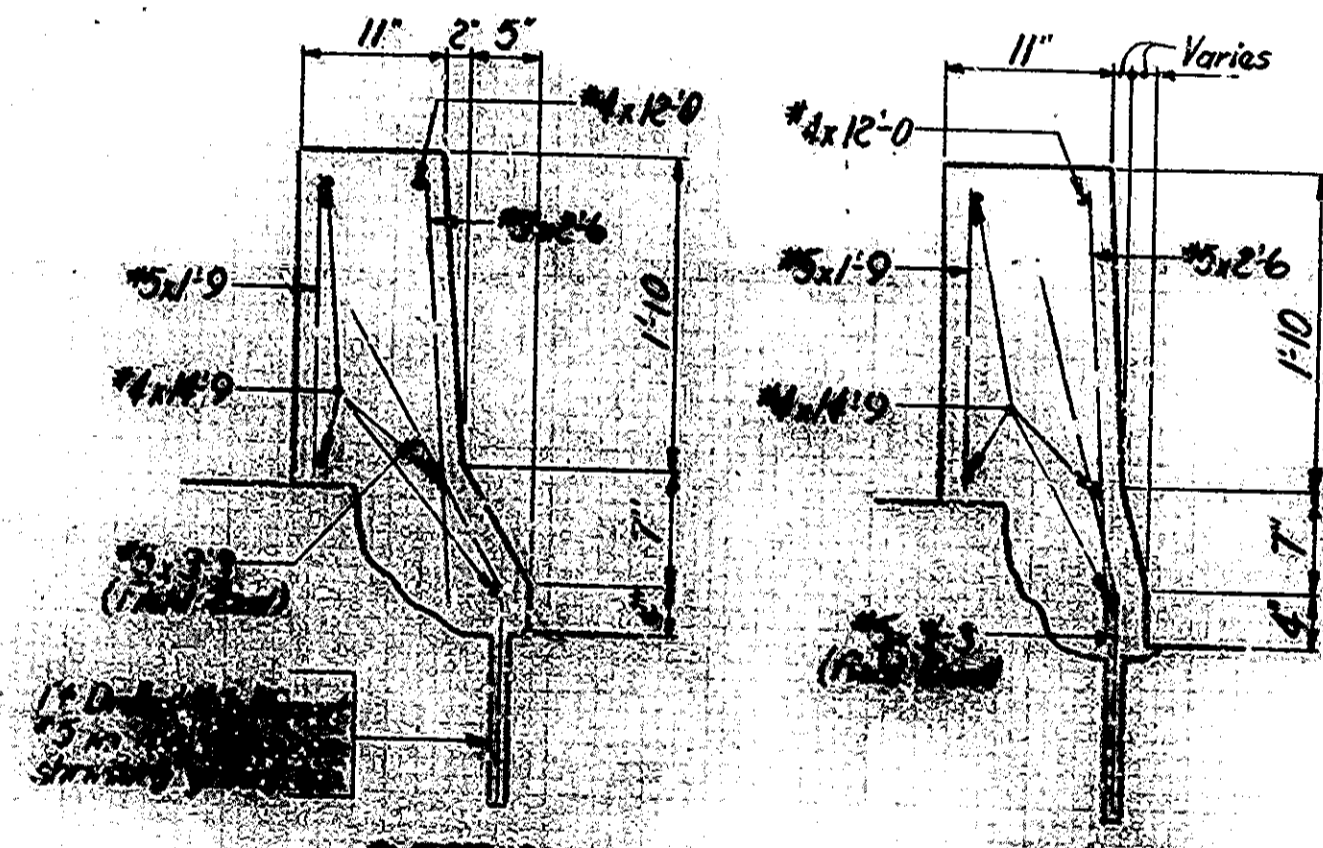
EAST WING RAILING PLAN
Scale: 1/4" = 1'-0"



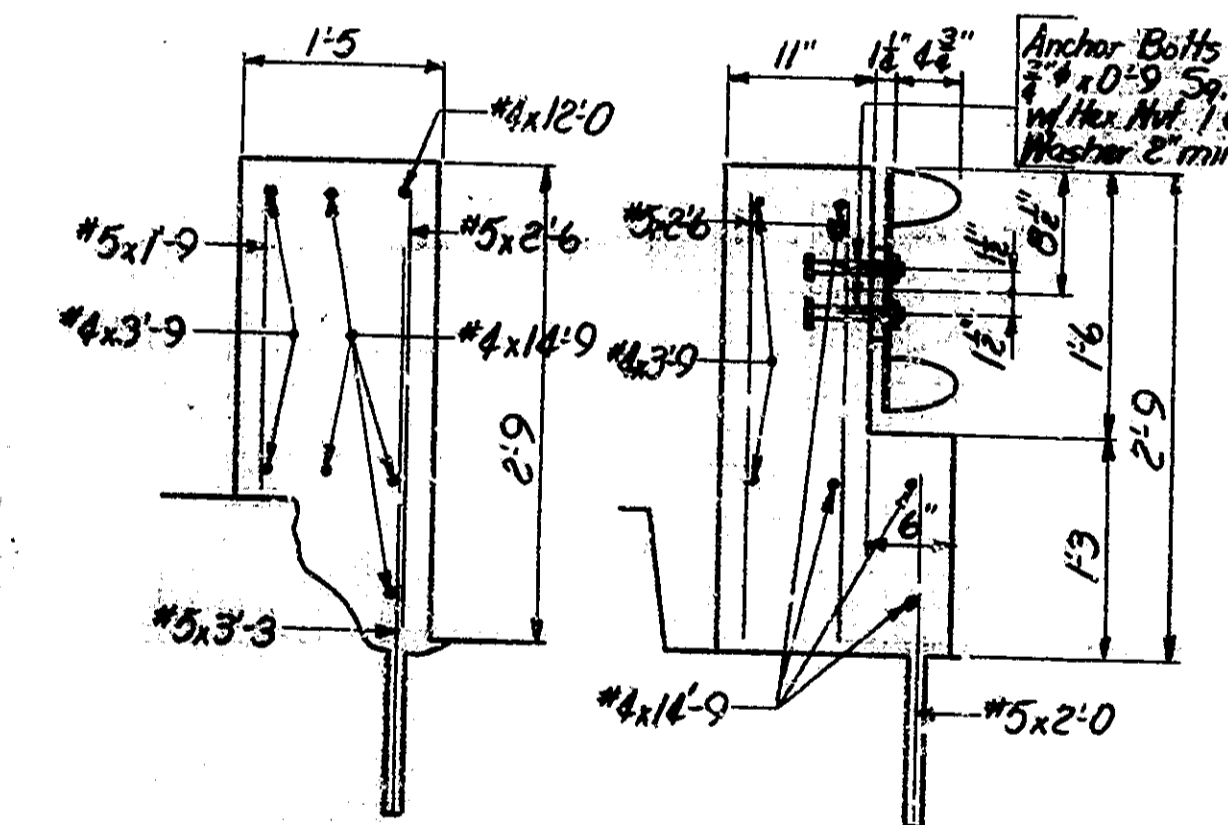
WEST WING RAILING PLAN
Scale: 1/4" = 1'-0"



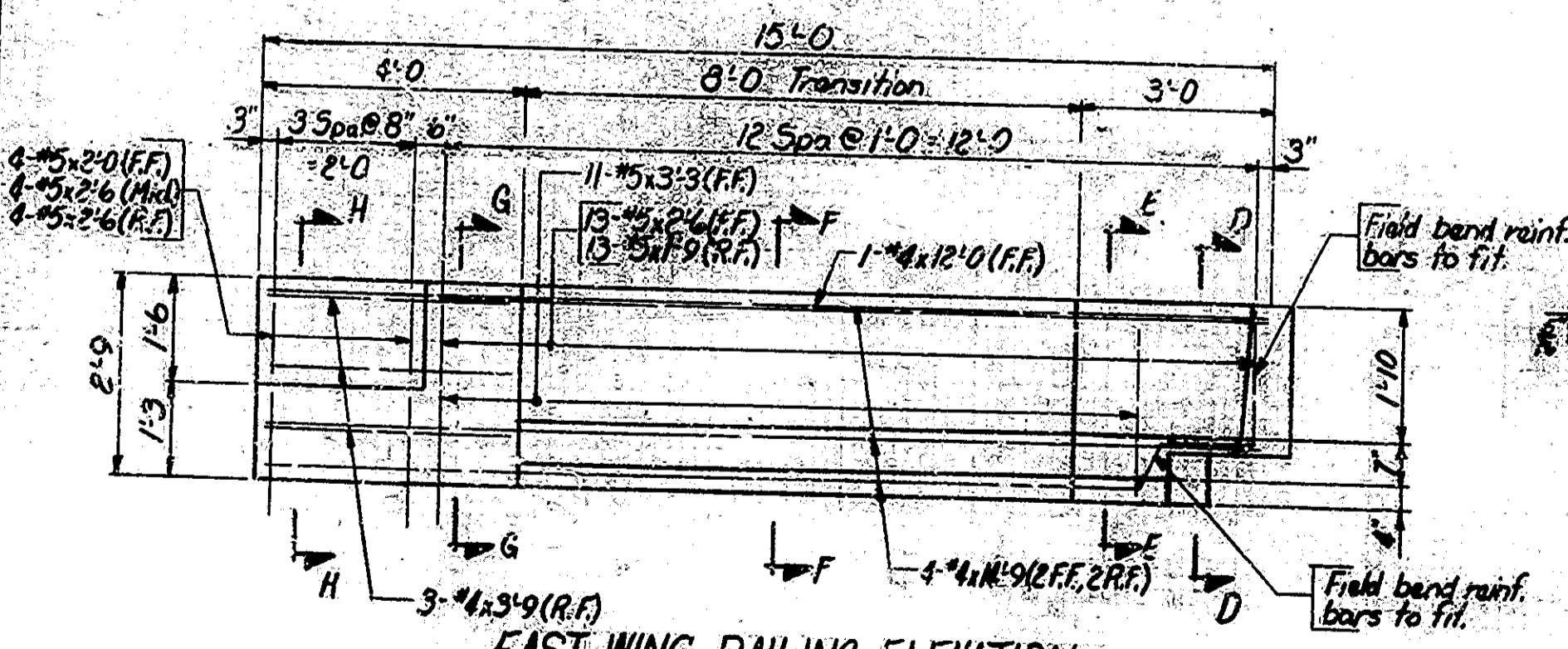
WEST WING RAILING ELEVATION
Scale: 1/2" = 1'-0"



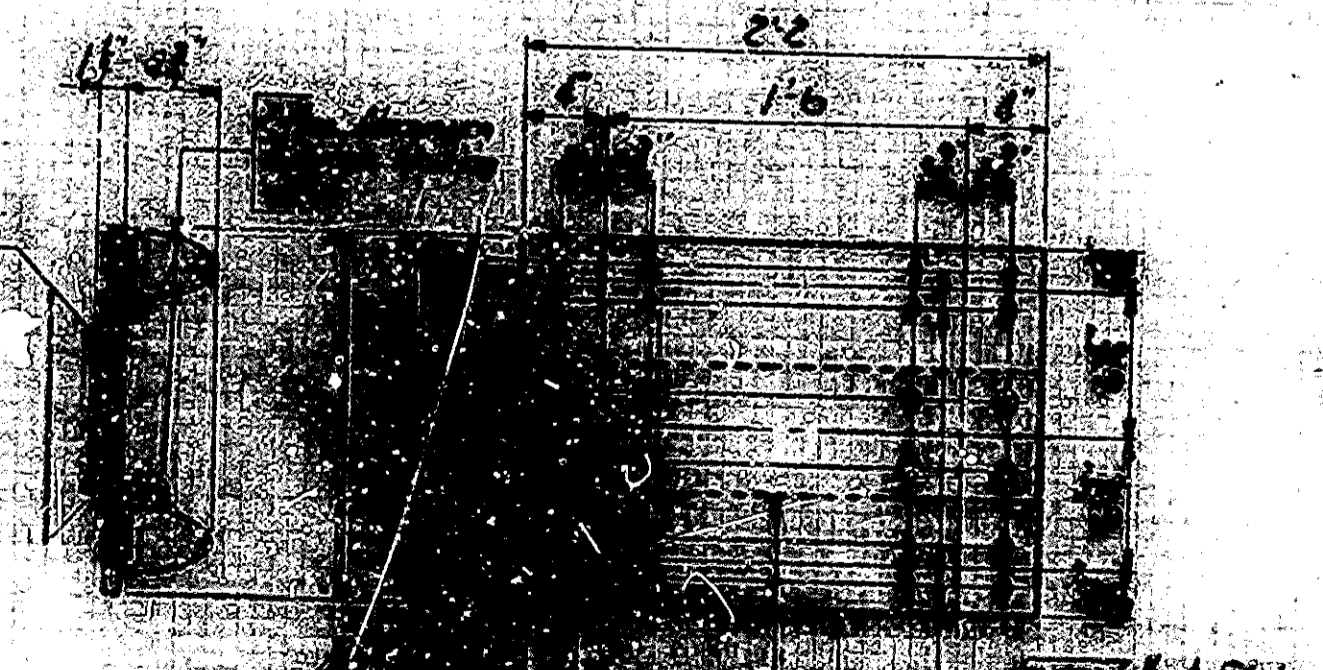
SECTION E-E **SECTION F-F**



SECTION G-G **SECTION H-H**



EAST WING RAILING ELEVATION
Scale: 1/2" = 1'-0"



SECTION D-D

Notes: For additional details and Bill of Materials, see Drwg. R2.
For reinforcing bar notes, see Br. Std. C.
All exist. runt. steel to be cleaned, straightened and left in place.

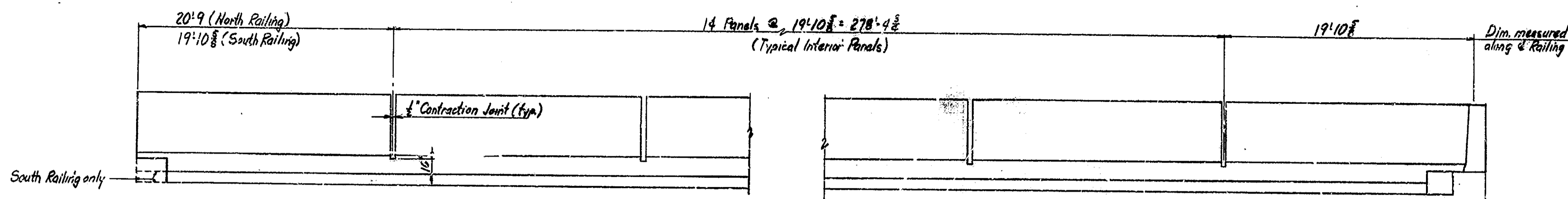
**GENERAL PLAN AND
WING RAILING DETAILS**
INDIANA STATE HIGHWAY COMMISSION

SCALE: 1" = 1'-0" Unless Noted DATE: Nov. 14, 1978
Robert J. Schirmer
SENIOR DESIGNER

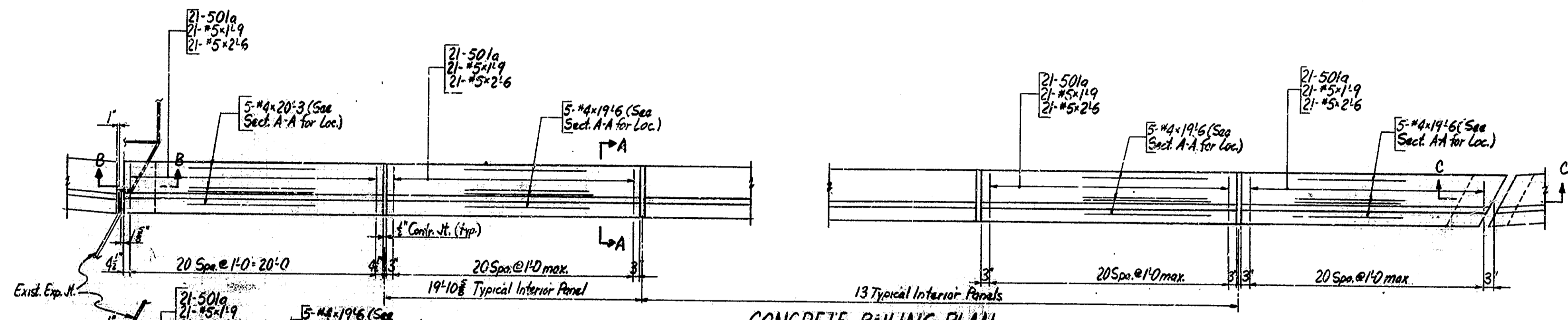
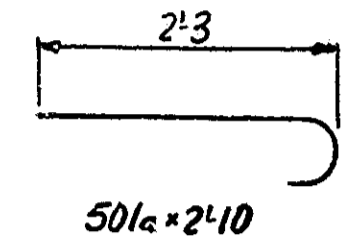
DRAWING: R1 OF 2 SHEET: 1 OF 2
PROJECT: I-IR-74-1(8A)0
CONTRACT NO. R-11855
BRIDGE FILE: I-74-14-2333 B



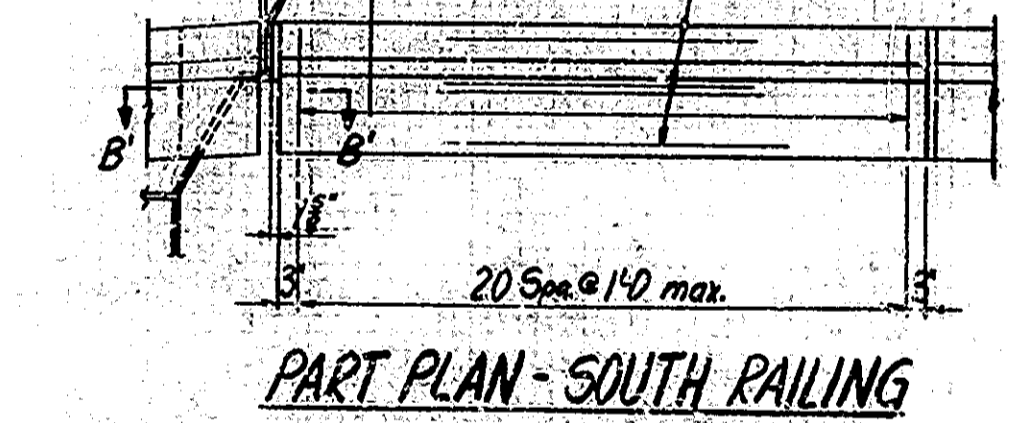
DESIGNED: CKD
DRAWN: JFR 11-14-78 CKD RIS 11-14-78
TRACED: CKD



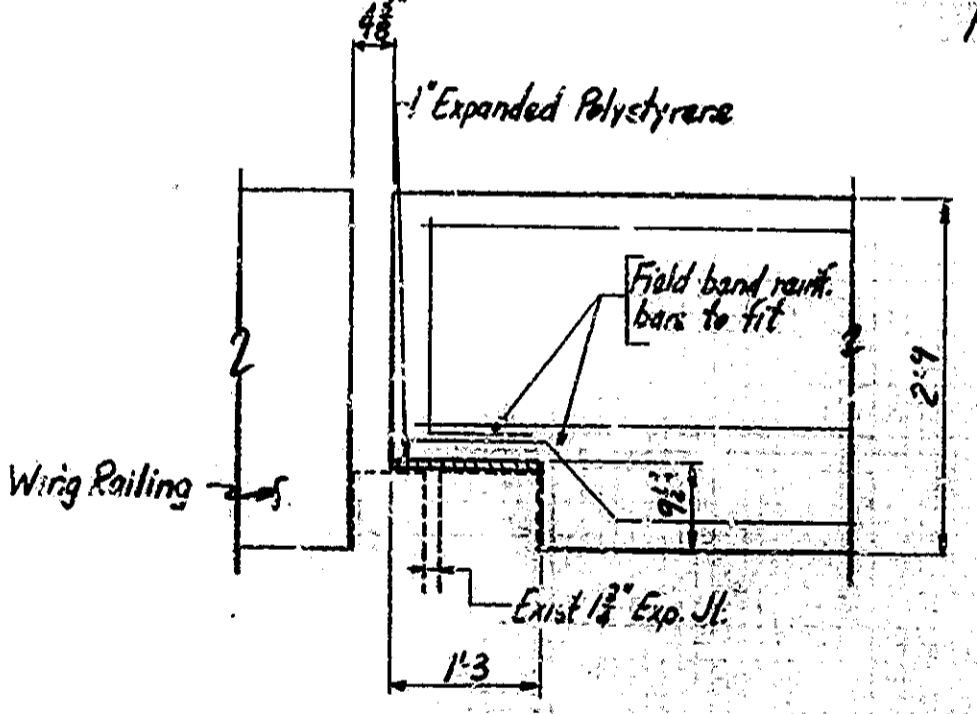
CONCRETE RAILING ELEVATION



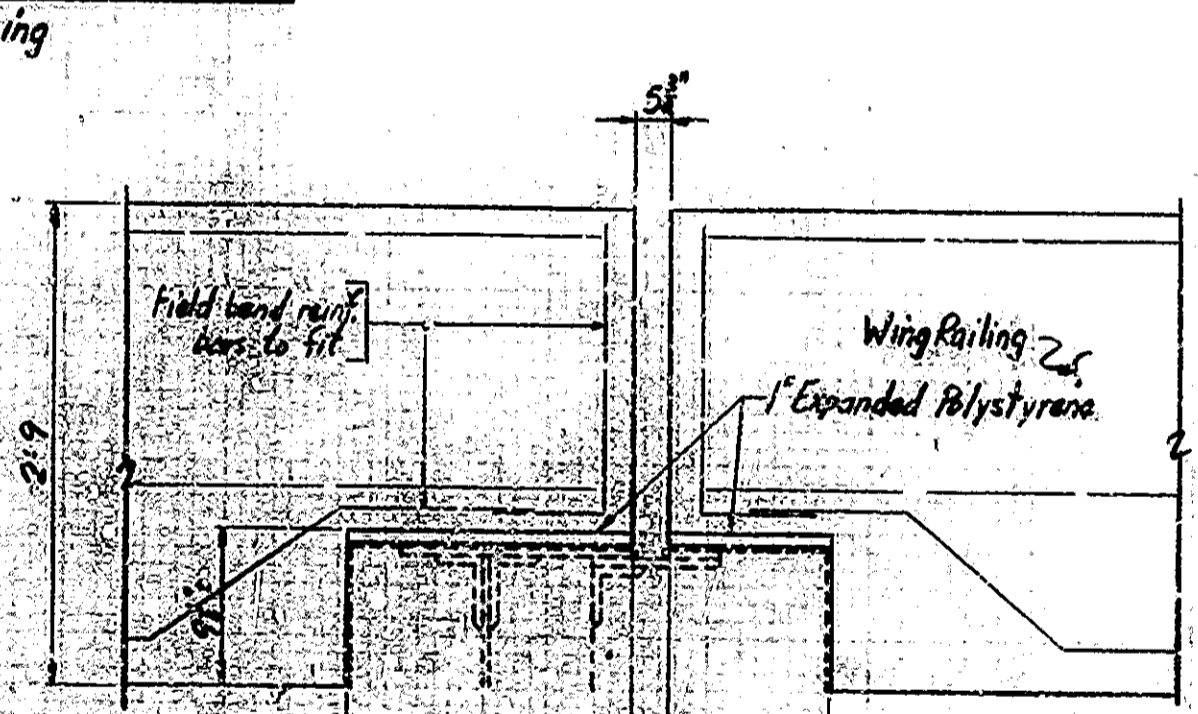
CONCRETE RAILING PLAN



PART PLAN - SOUTH RAILING

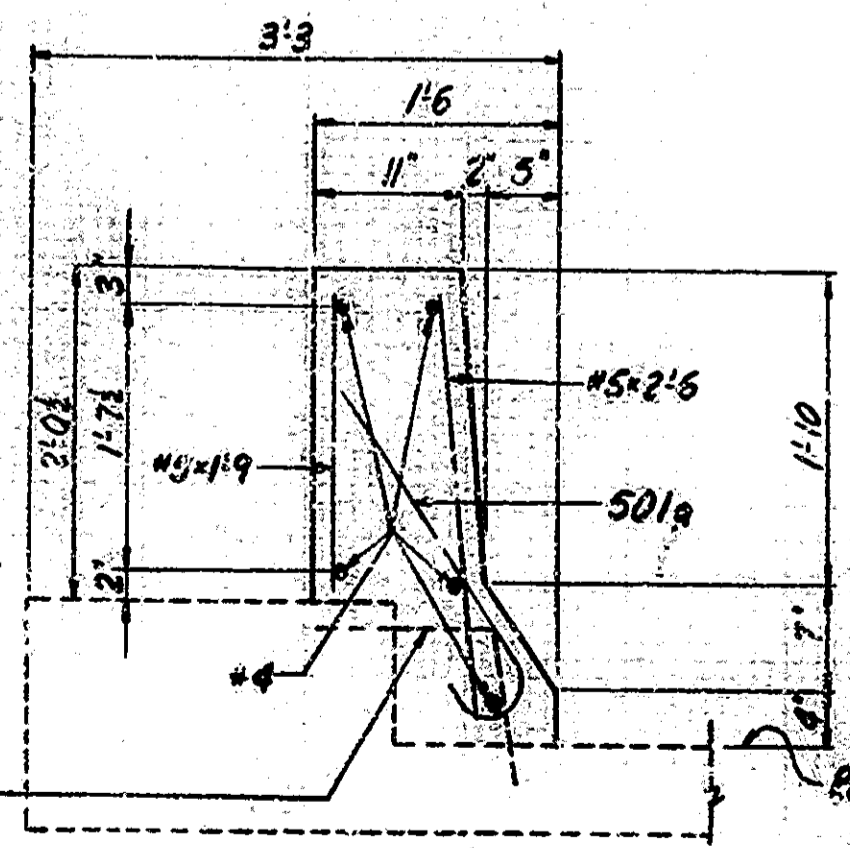


SECTION B-B (Section B'B similar)
Scale 3/4"=1'-0"

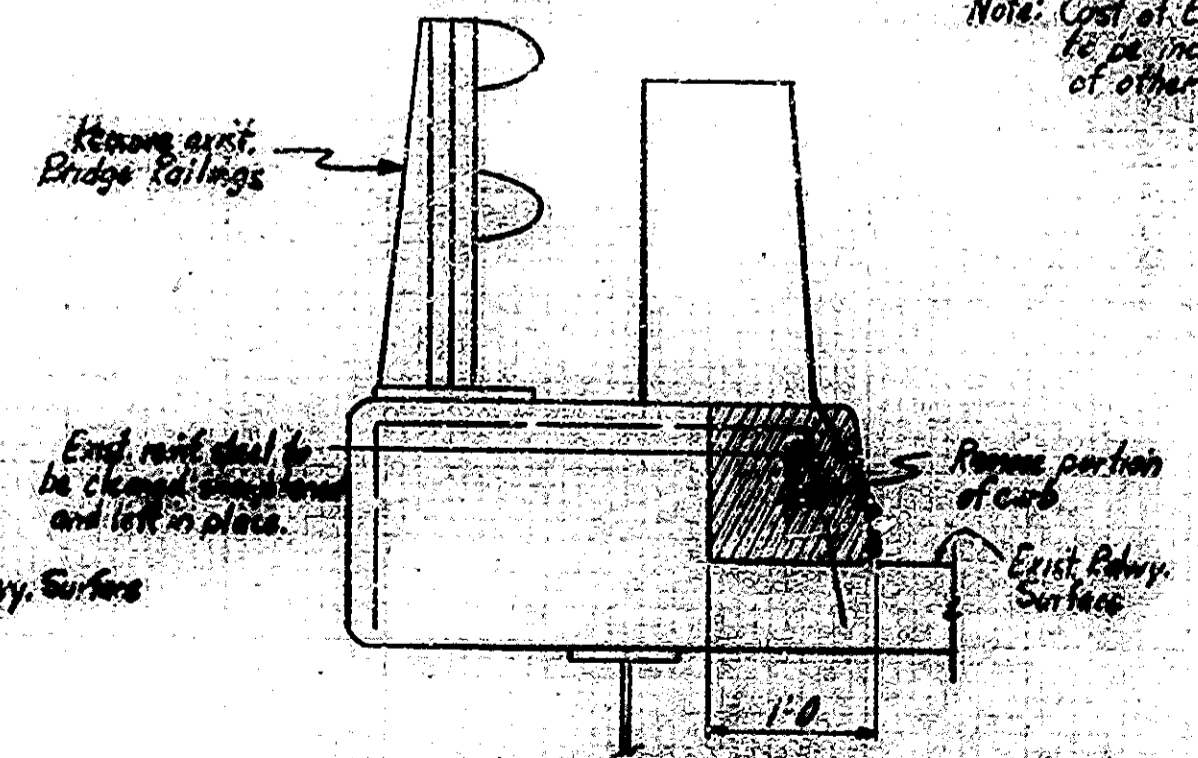


SECTION C-C
Scale 3/4"=1'-0"

Note: Cost of Expanded Polystyrene to be included in the cost of other items.



SECTION A-A
Scale 1"=1'-0"



SHOWING CURB REMOVAL LIMITS

| BILL OF MATERIALS | | | |
|--|--------------|--------|--------|
| REINFORCING STEEL | | | |
| SIZE AND MARK | Nº of PIECES | LENGTH | WEIGHT |
| 501a | 1344 | 2'-10" | |
| #5 | 104 | 3'-3" | |
| #5 | 1512 | 2'-6" | |
| #5 | 32 | 2'-0" | |
| #5 | 1448 | 1'-9" | |
| TOTAL #5 | | | 10977* |
| #4 | 10 | 20'-3" | |
| #4 | 310 | 19'-6" | |
| #4 | 32 | 14'-9" | |
| #4 | 8 | 12'-0" | |
| #4 | 24 | 3'-9" | |
| TOTAL #4 | | | 4613* |
| TOTAL REINF. STEEL | | | 15590* |
| CONCRETE RAILING CLASS "C" 140.9 cfs | | | |
| SURFACE SEAL 8250 sq. ft. | | | |
| GALVANIZED GUARD RAIL BRACKETS 8 each | | | |
| REMOVAL OF PRESENT RAILING 1273 L.F.T. | | | |

END STR

I-74-14-2333B

Notes: For reinforcing bar notes, see Br. Std. C1.
All reinforcing steel clearance shall be 2" min.
Concrete in Railing to be Class "C".
Surface Seal the Roadway, top and rear face of concrete railing.
For additional details, see Draw. R1.
Exist. bridge railings shall be removed and shall remain the property of the Indiana State Highway Commission.
Cost of curb removal and field drilled holes in concrete will not be paid for directly but shall be included in the cost of other items in the contract.

CONCRETE RAILING DETAILS
INDIANA STATE HIGHWAY COMMISSION

SCALE: - None, unless noted
DATE: - Nov. 14, 1978

Robert H. Schmitt
SENIOR DESIGNER

DRAWING: - P2 OF 2 SHEET: - 2 OF 2
PROJECT: - I-74-14-1040
CONTRACT NO. - R11855
BRIDGE FILE: - I-74-14-2333B



DESIGNED: CKD
DRAWN: RJS 11-10-78 CKD
TRACED: CKD