

FEDERAL ROAD DISTRICT NO.	STATE	LSF PROJ. NO.	FISCAL YEAR	SHEET NO.	TOTAL SHEETS
4	IND.	875(2)	1968	-1	

RIGHT OF WAY PLANS

STATE OF INDIANA

STATE HIGHWAY DEPARTMENT

CODE 0985

R/W INDEX	
SHEET NO.	DESIGNATION
1	TITLE SHEET
2	PARCEL LISTING
3	DETAIL

PLAN OF PROPOSED SCENIC STRIP

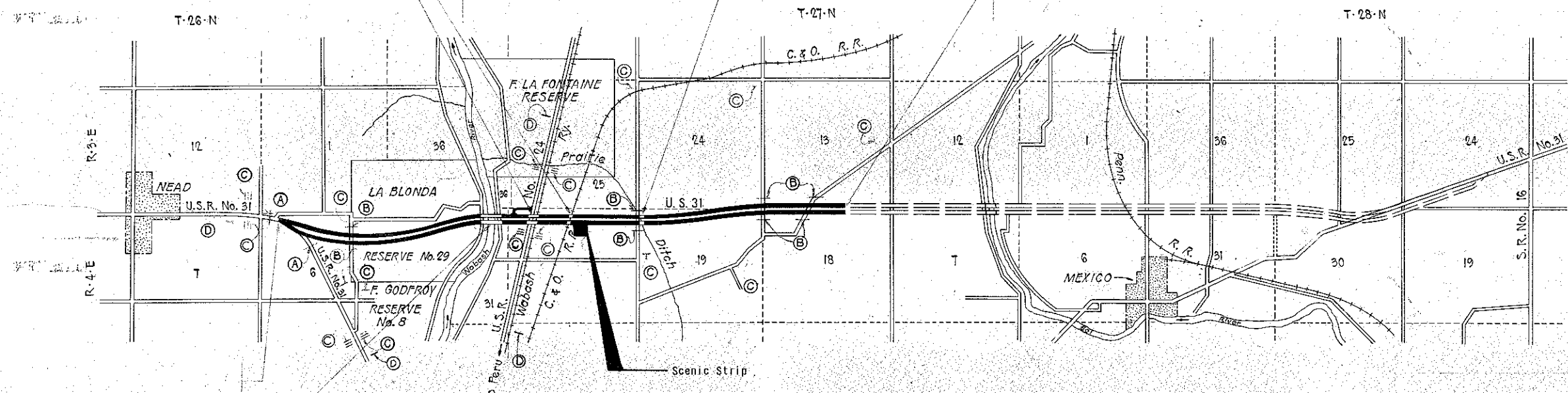
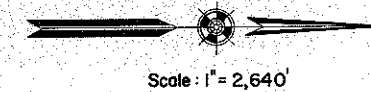
STATE HIGHWAY

LSF PROJECT NO. 875 (2) ^R/_W

Scenic Strip 0.330 mile north of S.R. 24 on U.S. 31 in Miami County

REVISIONS		
SHEET NO.	DATE	REVISED

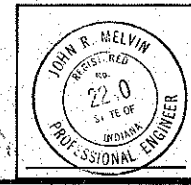
SCALE
 PLAN { LONG: 1"=100'
 { TRANS: 1"=100'



Approved By: _____
 Chief Engineer, INDIANA STATE HIGHWAY COMMISSION

MIAMI CO.

Designed By: J. H. Mills
 RECOMMENDED FOR APPROVAL S-27-69
L. D. Cooper
 Engineer of Roadside Development
 RECOMMENDED FOR APPROVAL T-8-69
Sanborn
 Engineer of Plans and Specifications



Code 0985
 LSF-875(2)
 U.S.R. 31 Miami Co.
 3 sheets

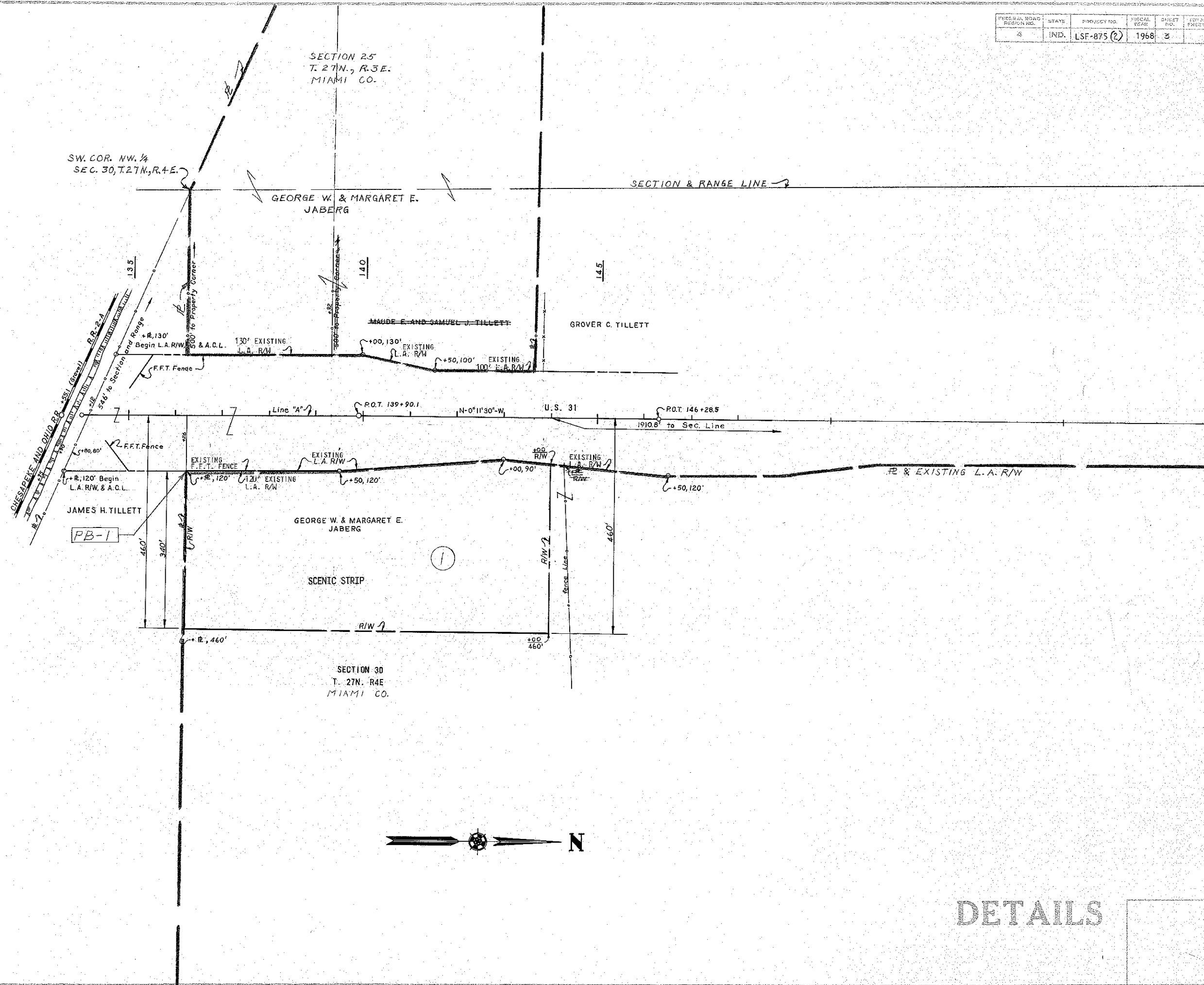
ROAD USJX COUNTY-MIAMI PROJECT LSF-875(2) L.A. CODE 0985 DATE 07/28/71

LALLO PARCEL LISTING FOR LAND ACQUISITION INDIANA STATE HIGHWAY COMMISSION

PARCEL NUMBER	GRANTOR	CENTER LINE	FROM APPROX STA.	TO APPROX STA.	PLAN SHEET	BRIDGE AREA	TOTAL AREA	R/W EXISTING	MATURE LAND TO BE ACQUIRED	RESIDUE AREA	BLOG.
1	JABERG-GEORGE W. ET UX. A	136	144	3	136.470AC	9.957AC	FS	6.221AC	A= 86.738AC B= 22.504AC D= 8.105AC		

* (ASTERISK) IN THE BRIDGE COLUMN INDICATES THE PARCEL IS PARTIALLY OR COMPLETELY WITHIN THE LIMITS OF A BRIDGE PROJECT.
 * (DASH) IN THE BLOG. COLUMN INDICATES A BUILDING IS PARTIALLY OR COMPLETELY WITHIN THE LIMITS OF THE R/W REQUIRED.
 FS = FEE SIMPLE TITLE

FEDERAL ROAD DISTRICT NO.	STATE	PROJECT NO.	FISCAL YEAR	SHEET NO.	TOTAL SHEETS
48	IND.	LSF-875 (2)	1968	3	



DETAILS

PROJECT NO.	SHEET NO.	TOTAL SHEETS
LSF-875 (2)	3	