

BRIDGES OVER 20' SPAN					
PUB. ROAD DIV. NO.	STATE	PROJECT NO.	FISCAL YEAR	SHEET NO.	TOTAL SHEETS
4	IND.	F-70(6)	1956	1	37

INDEX

PROJECT	STRUCTURE	TYPE	SPAN	OVER	STATION	CONTRACT NO.
F-70(6)	31-R-4041	CONTINUOUS STEEL BEAM	70', 84', 70', 5K. 50' R.	PIPE CREEK	G20+95	

SHEET NO.	SHEET DESIGNATION	SUBJECT
1		INDEX & TITLE SHEET
2	ONE SHEET	TYPICAL CROSS SECTIONS
3	ONE SHEET	APPROACH DETAILS
4	S1(STRUCTURE 31-R-4041)	LAYOUT
5	S2	GENERAL PLAN
6	S3	BENT N° 1 DETAILS
7	S4	BENT N° 1 DETAILS
8	S5	BENT N° 1 DETAILS
9	S6	BENT N° 1 DETAILS
10	S7	BENT N° 1 DETAILS & BILL OF MATERIALS
11	S8	PIER N° 2 DETAILS
12	S9	PIER N° 3 DETAILS
13	S10	ABUTMENT N° 4 DETAILS
14	S11	ABUTMENT N° 4 DETAILS
15	S12	ABUTMENT N° 4 RAILING DETAILS & BILL OF MATERIALS
16	S13	FRAMING PLAN - SPANS A, B & C
17	S14	RAILING & SHOE DETAILS
18	S15	TOOTHED EXPANSION JOINT
19	S16	FLOOR DETAILS
20	S17	FLOOR DETAILS
21	S18	FLOOR DETAILS & BILL OF MATERIALS
22	S19	SCREEDS
23	ONE SHEET	SUMMARY
24	ONE SHEET	CROSS SECTIONS
25	BRIDGE STD. C1	STANDARD MISCELLANEOUS DETAILS (REV. 9-15-55)
26	ROAD STD. SHEET A	STANDARD PAVEMENT JOINTS (REV. 10-6-53)
27	ROAD STD. SHEET ME	MISCELLANEOUS STANDARDS (REV. 2-9-53)
28	ROAD STD. SHEET MI	MISCELLANEOUS STANDARDS (REV. 8-10-54)
29	ROAD STD. SHEET MP	MISCELLANEOUS STANDARDS (OCT. 1954)
30	BRIDGE STD. G1	STANDARD THICKENED PAVEMENT DETAILS (REV. 3-20-53)
31	BRIDGE STD. M1	MISCELLANEOUS APPROACH DETAILS (REV. 4-15-53)
32	BRIDGE STD. M2	MISCELLANEOUS APPROACH DETAILS (REV. 9-7-54)
33	BRIDGE STD. S2	TYPICAL DETAILS FOR PLACING SPECIAL FILLING MATERIAL (REV. 9-20-52)
34	BRIDGE STD. T SHEET A	STANDARD TEMPORARY BRIDGE (REV. 3-26-43)
35	BRIDGE STD. T SHEET B	STANDARD TEMPORARY BRIDGE (REV. 11-13-39)
36	SHEET 1 DETOURS	STANDARD DETOUR SIGNS (REV. 2-11-54)
37	SHEET 2 DETOURS	STANDARD DETOUR SIGNS (REV. 5-1-51)

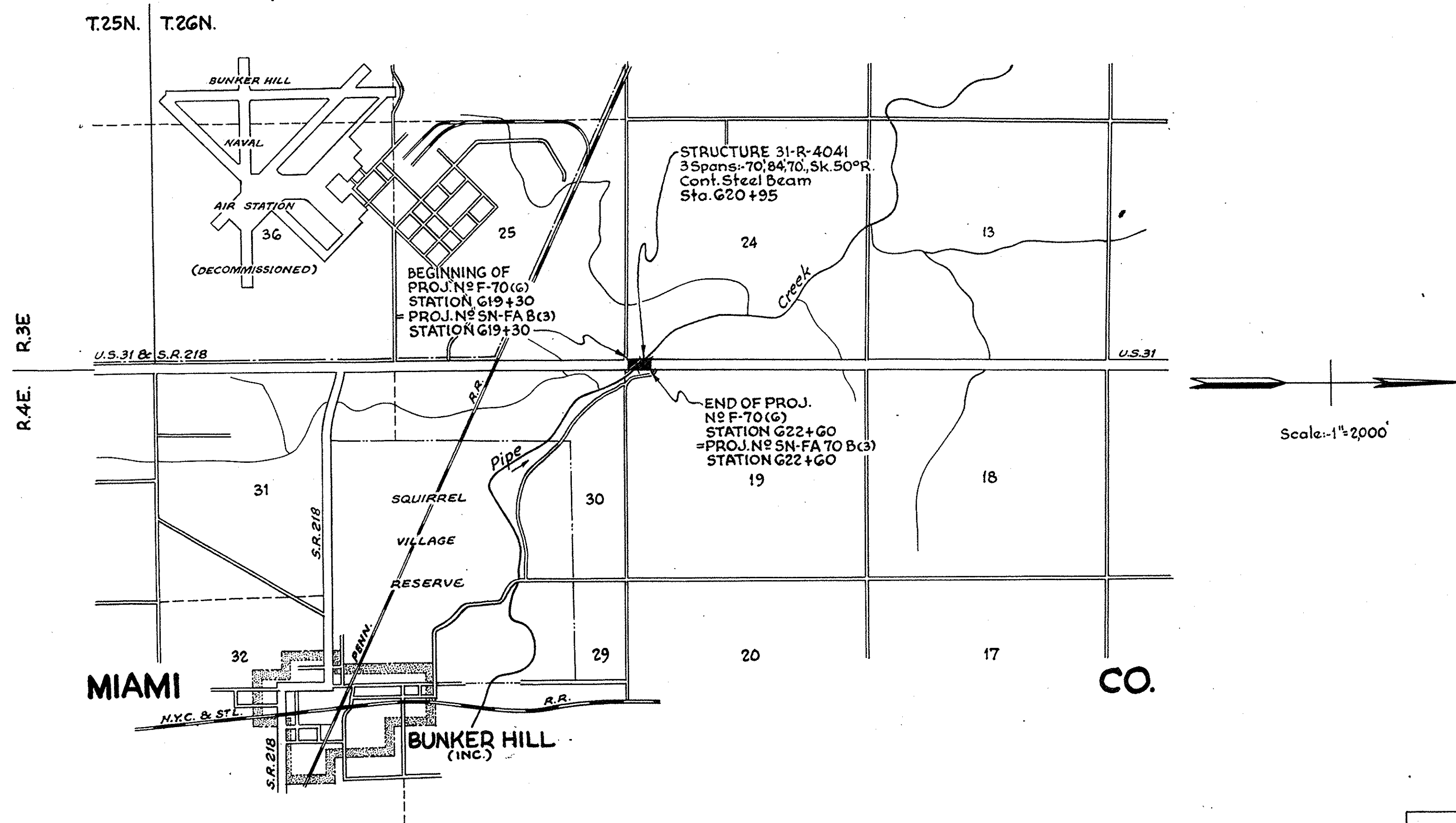
STATE OF INDIANA  
STATE HIGHWAY DEPARTMENT

BRIDGE PLANS  
FOR SPANS OVER 20 FEET  
ON  
STATE ROAD NO. 31 SECTION R  
F.A. PROJECT NO. F-70(6) R/W  
KOKOMO-PERU ROAD

CODE 082A

Returned from Me.

BEGINNING AT A POINT ON U.S. 31 APPROX. 79' NORTH OF THE CORNER COMMON TO SECTIONS 25, 24, 30 & 19 AND EXTENDING NORTH A DISTANCE OF APPROX. 330' TO A POINT ON U.S. 31 APPROX. 409' NORTH OF THE CORNER COMMON TO SECTIONS 25, 24, 30 & 19, ALL IN T.26N. - R.3&4E., IN MIAMI CO.  
ROADWAY LENGTH = 0.019 MI. MAX. GRADE = 0.00%  
BRIDGE LENGTH = 0.043 MI.  
TOTAL LENGTH = 0.062 MI.

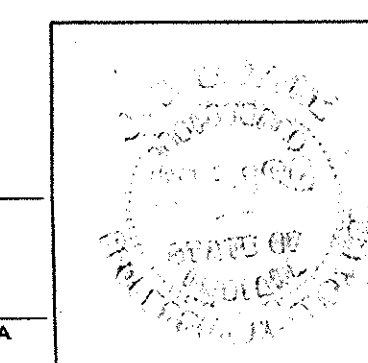


APPROVED AND ADOPTED  
BY STATE HIGHWAY DEPARTMENT OF INDIANA  
*Vigil W. Smith*  
CHAIRMAN, STATE HIGHWAY DEPARTMENT OF INDIANA  
DATE 1-4-56

APPROVED  
*Carl E. Nopelssang*  
CHIEF ENGINEER, STATE HIGHWAY DEPARTMENT OF INDIANA  
DATE 12-27-55

RECOMMENDED FOR APPROVAL DATE 12-27-55

*J. W. Smith*  
ENGINEER OF BRIDGE DESIGN, STATE HIGHWAY DEPARTMENT OF INDIANA

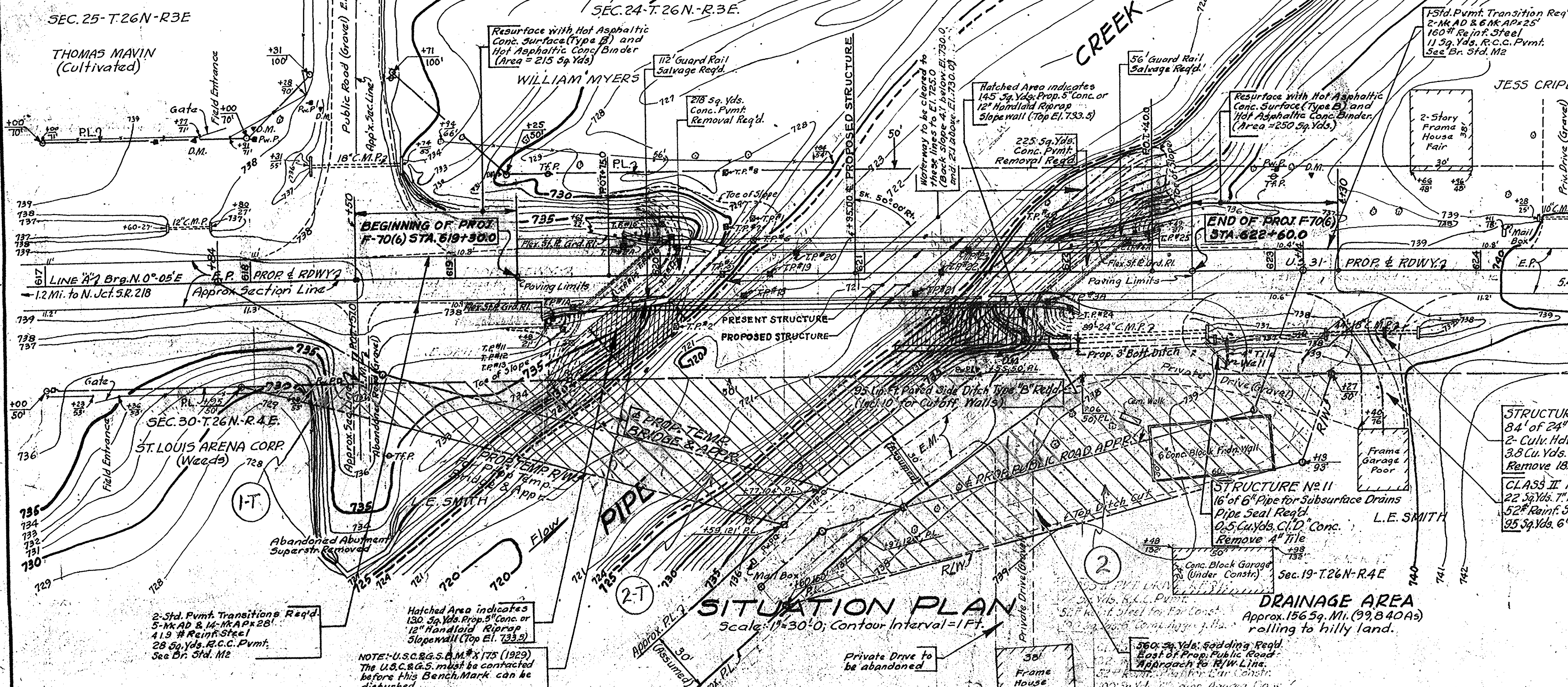


DEPARTMENT OF COMMERCE  
BUREAU OF PUBLIC ROADS  
APPROVED:  
\_\_\_\_\_  
DISTRICT ENGINEER DATE

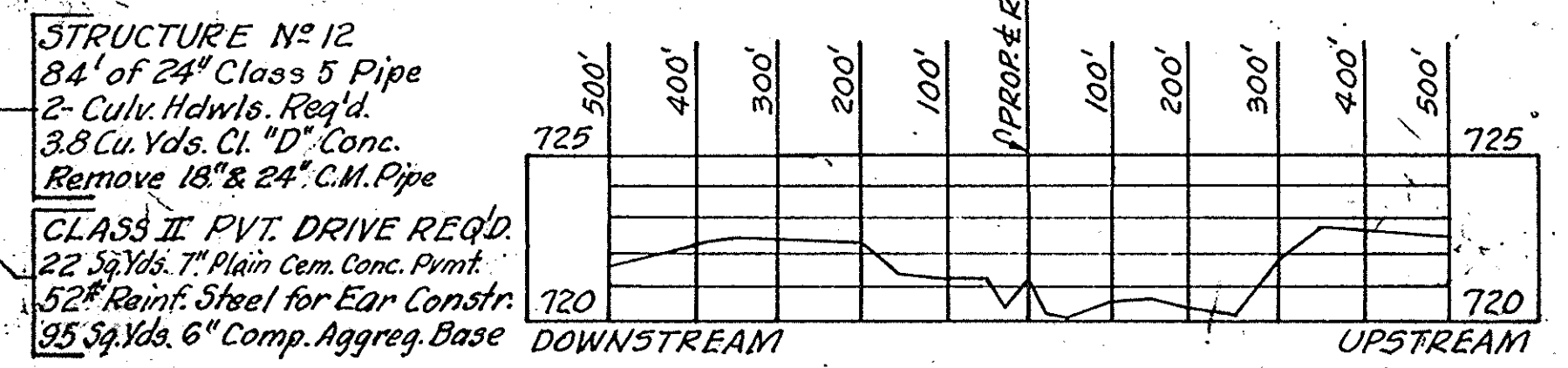
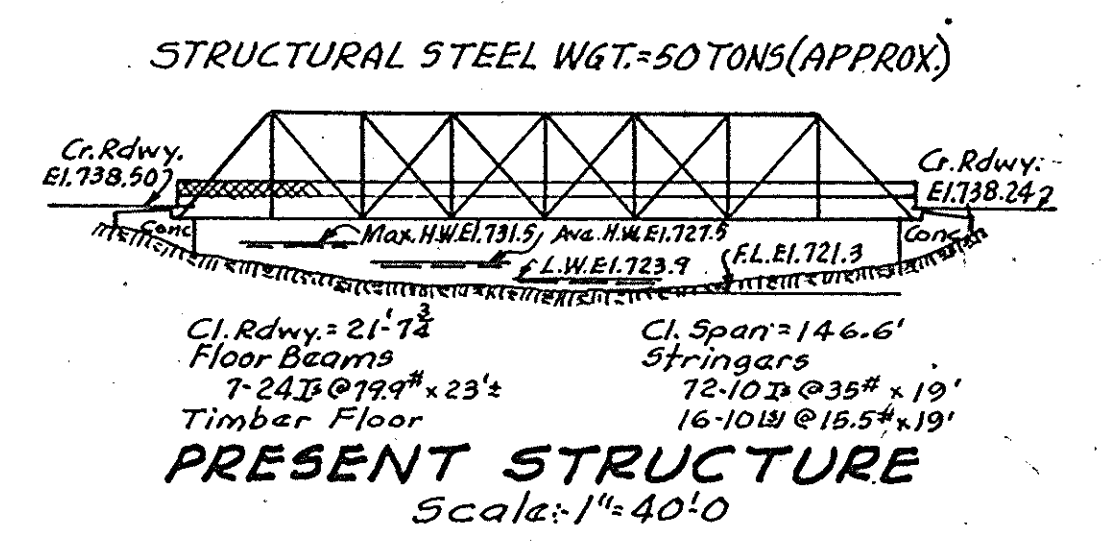
BRIDGE FILE: 31-R-4041

NOTE:   
 - Indicates Power Poles owned by Rural Electrification Membership Corp.   
 - Indicates Power Poles owned by Peru Municipal Power & Light Co.   
 - Telephone Poles owned by Indiana Bell Telephone Co. Present U.S. 31 is 18" Concrete widened to 24" with Concrete and resurfaced with Rock Asphalt.

PROJECT	FISCAL YEAR	SHEET NO.	TOTAL SHEETS
F-70(6)		1	3



REFERENCES   
 Set By Br. Dept.   
 (Not to Scale)



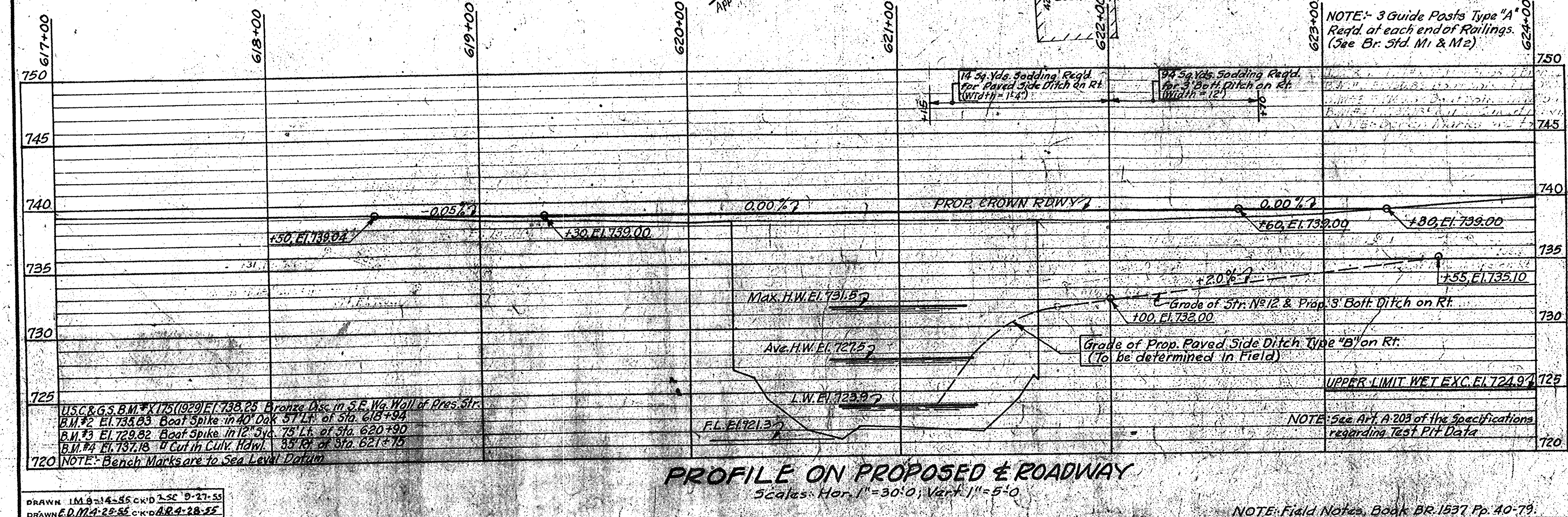
TEST BORINGS				TEST PITS			
ST. NO.	STA.	OFFSET	ROD DEPTH	MATERIAL	ROCK ELEV.	ST. NO.	STA.
1A	619+57	15' R	737.3	18.7 Br. Clay	718.5	1	620+45
			18.8 Rock	718.7			
			17.5 Br. Clay	721.1			
			19.4 Sand. Clay, Gravel	724.3			
2A	619+82	15' L	737.5	19.4 Sand. Clay, Gravel	718.0	2	620+30
			19.3 Rock	726.3			
			6.5 Br. Clay	727.8			
			6.6 Rock	729.9			
3A	621+89	15' R	738.0	6.5 Br. Clay	731.4	3	620+32
			6.6 Rock	725.9			
			7.4 Br. Clay	729.6			
			7.6 Rock	732.5			
4A	622+29	15' L	737.9	7.4 Br. Clay	730.4	4	619+57
			7.6 Rock	733.7			
				735.7			
				738.7			
5	619+78	11' R	738.8		721.6	5	620+01
				737.0			
				737.0			
				738.6			
6	620+06	19' L	738.1		718.6	6	620+11
				728.7			
				728.7			
				718.6			
7	620+14	10' R	728.7		718.8	7	620+39
				722.4			
				719.3			
				717.0			
8	621+84	10' R	721.5		720.5	8	621+34
				721.5			
				721.5			
				719.5			
9	621+50	11' L	722.2		721.5	9	622+10
				731.6			
				731.6			
				731.8			
10	622+38	18' L	737.8		731.8	10	622+38
				731.8			
				731.8			
				731.8			

FILL + 20% = 210 Cu. Yds.   
 SURPLUS EXC. = 1890 Cu. Yds.   
 COMMON EXC. = 1050 Cu. Yds.   
 WASTE = 2530 Cu. Yds.

NOTE: SEE SHEET NO. 3 FOR DETAILS OF PROP. TEMP. BRIDGE & APPROACHES AND PROP. PUBLIC ROAD APPROACH

LAYOUT   
 CONTINUOUS STEEL BEAM BRIDGE   
 3 SPANS: 70'0", 84'0", 70'0" SK. 50' RT. 2-2' OWALKS 300' ROADWAY   
 OVER PIPE CREEK ON STATE ROAD 31-R   
 STATE HIGHWAY DEPARTMENT OF INDIANA   
 MIAMI COUNTY

SCALE: AS NOTED 1955   
 RECOMMENDED FOR APPROVAL:   
 DRAWING: S1 OF 19   
 PROJECT: F-70(6) STATION: 620+95.00   
 BRIDGE CONTRACT NO.   
 BRIDGE FILE: 31-R-4041



DRAWN I.M.B. 14-55 C.R.D. 2-27-55   
 DRAWN E.D.M. 4-25-55 C.R.D. 4-28-55   
 TRACED T.B. 6-21-55 C.R.D. 7-9-55

NOTE: Field Notes, Book BR. 1537 Pp. 40-79.