

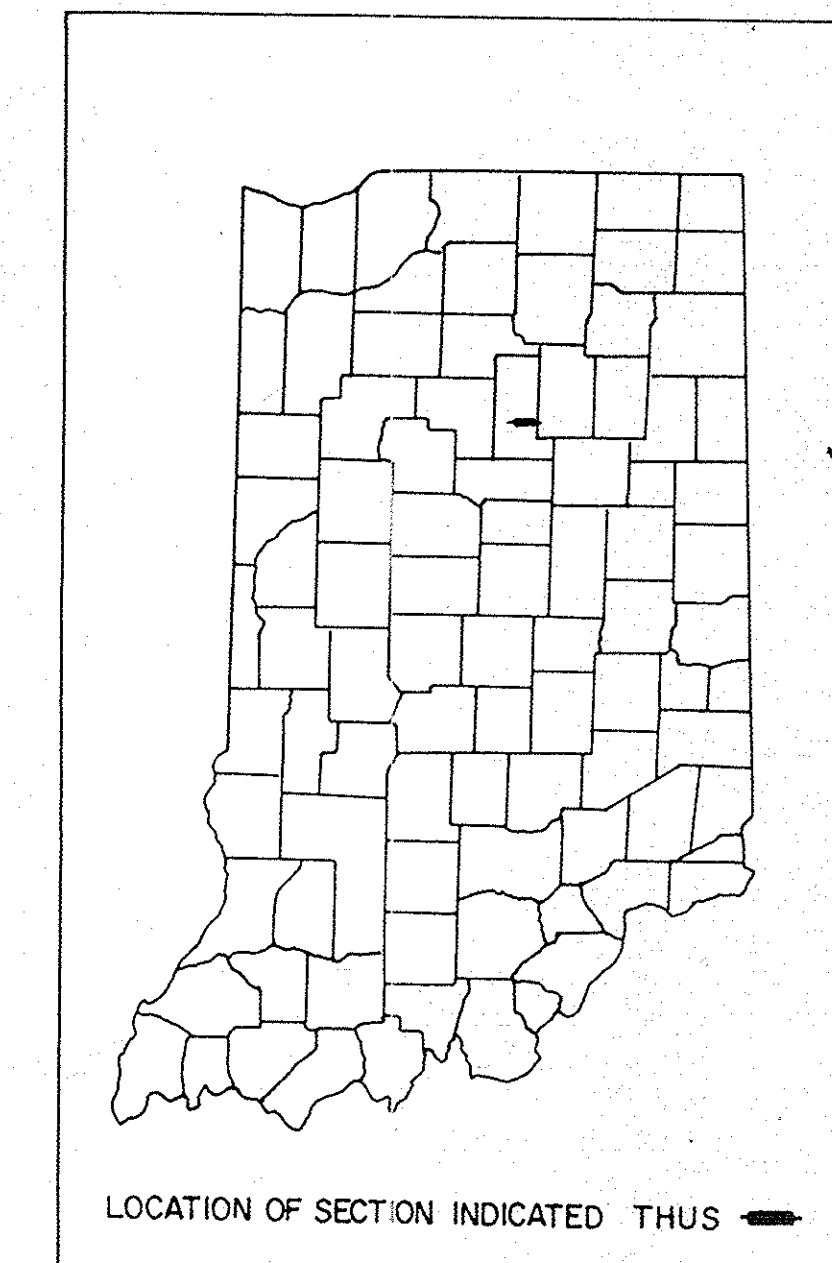
STATE OF INDIANA
INDIANA STATE HIGHWAY COMMISSION

PLAN AND PROFILE OF PROPOSED
STATE HIGHWAY
PROJECT NO. ST-153-4(A)
CONTRACT NO. 12622

CODE 1814

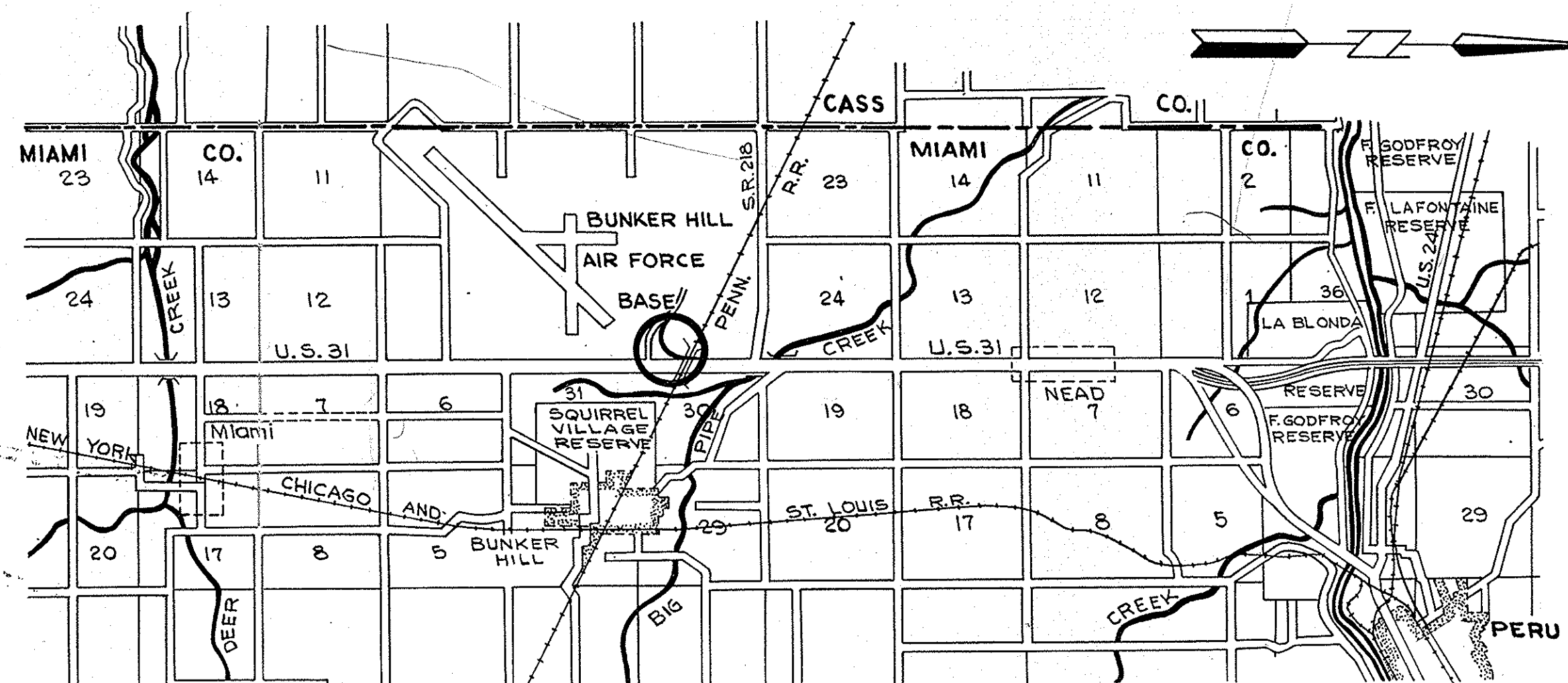
FEDERAL ROAD REGION NO.	STATE	PROJECT NO.	FISCAL YEAR	SHEET NO.	TOTAL SHEETS
5	IND.	ST-153-4(A)	1980	1	45

DESIGN DATA				
A.D.T. (19)				V.P.D.
A.D.T. (19)	PROJECTED			V.P.D.
D.H.V. (19)				V.P.H.
DIRECTIONAL DISTRIBUTION				%
TRUCKS	D.H.V.	A.D.T.		%
DESIGN SPEED				M.P.H.
ACCESS CONTROL				



LEGEND

- (A) BARRICADE TYPE "A"
- (B) BARRICADE TYPE "B"
- (C) CONSTRUCTION SIGN TYPE "A"
- (D) CONSTRUCTION IDENTIFICATION SIGN
- (A) PERMANENT BARRICADE TYPE "A"



U.S. 31 & RAMP ENTRANCE
TO GRISSOM AIR FORCE BASE
MIAMI, COUNTY

RECOMMENDED FOR APPROVAL 3-10-80

[Signature]
ENGINEER OF TRAFFIC DESIGN

RECOMMENDED FOR APPROVAL 3-11-80

[Signature]
CHIEF DIVISION OF TRAFFIC

APPROVED 3-11-80

[Signature]
CHIEF ENGINEER INDIANA STATE HIGHWAY COMMISSION

INDIANA STATE HIGHWAY COMMISSION
STANDARD SPECIFICATIONS DATED 1978
TO BE USED WITH THESE PLANS

FEDERAL HIGHWAY ADMINISTRATION
DEPARTMENT OF TRANSPORTATION

APPROVED

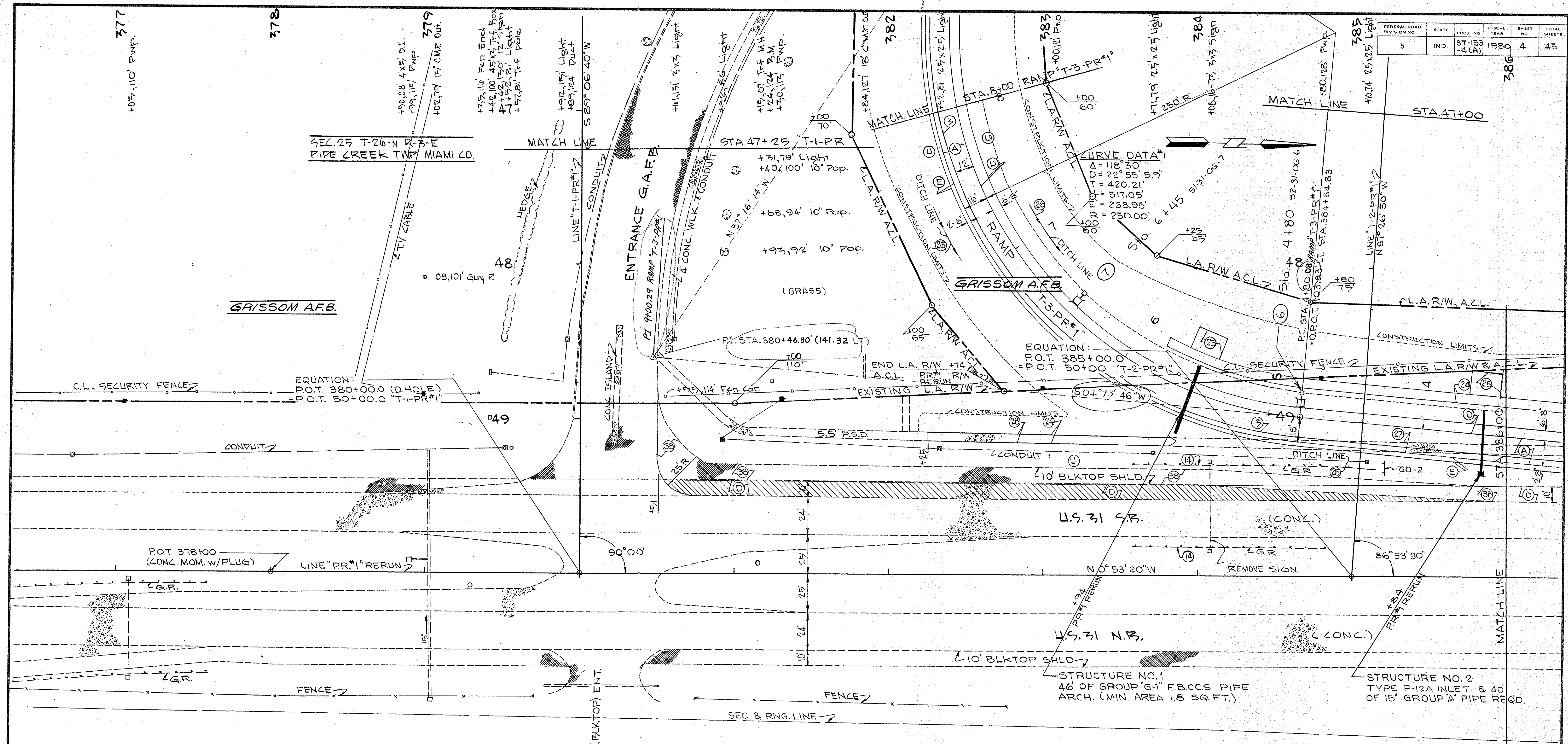
DIVISION ENGINEER

DATE

ROAD FILE:-

PROJECT NO.	LINE	SHEET NO.	TOTAL SHEETS	FILE
ST-153-4(A)		1		

FEDERAL ROAD DIVISION NO.	STATE	PROJ. NO.	FISCAL YEAR	SHEET NO.	TOTAL SHEETS
5	IND.	ST-153-4 (P)	1980	4	45



SEC. 25 T-20-N R-7-E
PIPE CREEK TWP. MIAMI CO.

SEC. 30 T-20-N R-4-E
PIPE CREEK TWP. MIAMI CO.

377
+05,110' P.M.P.

378

379

382

383

384

385

386

+08,05' 3x3 Sign Base
+08,69' 3x3 Sign Base

+03,82' 2 Inlet w/15" Out

+29,06' 2 Conc. T-F M.H.

+10,80' End Fern.
+18,15' 12" C.M.P. InH

+15,15' 12" C.M.P. Out.

+15,81' Begin Fern

+17,85' Fern. Cor.

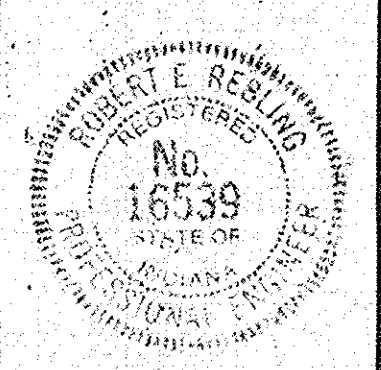
LEGEND

- (A) 8" Reinforced Concrete
- (D) Bituminous Shoulder
660#/SYS. Bituminous Base (Size No. 5D)
- (C) Bituminous Shoulder
6" to 6" Bituminous Base (Size No. 5D)
- (E) Bituminous Shoulder
880#/SYS. Bituminous Base (Size No. 5D)
- (F) 4" Concrete Sidewalk
- (U) Mulched Seeding
- (X) Ear Construction Type "A"
- (P) Pavement Removal
- (L) Longitudinal Joint
- (B) 1" Preformed Expansion Joint With Load Transfer
- (3) Concrete Curb
- (14) Guard Rail Removal
- (24) Paved Side Ditch Type "J"
- (25) Retement Riprap
- (26) Sodding
- (27) Anchor Bolt
- (28) Paved Side Ditch Removal
- (32) Sidewalk Removal
- (33) Curb Removal
- (38) Shoulder Removal

INDIANA STATE HIGHWAY COMMISSION
DIVISION OF TRAFFIC
CHANNELIZATION
U.S. 31 & RAMP ENTRANCE TO GRISSOM
A.F.B.
MIAMI COUNTY

Robert C. Ballou

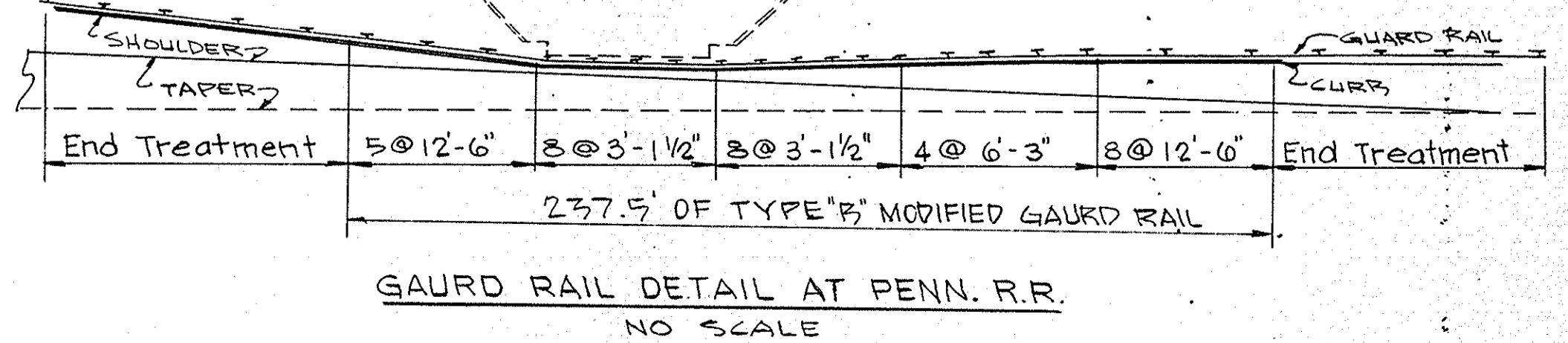
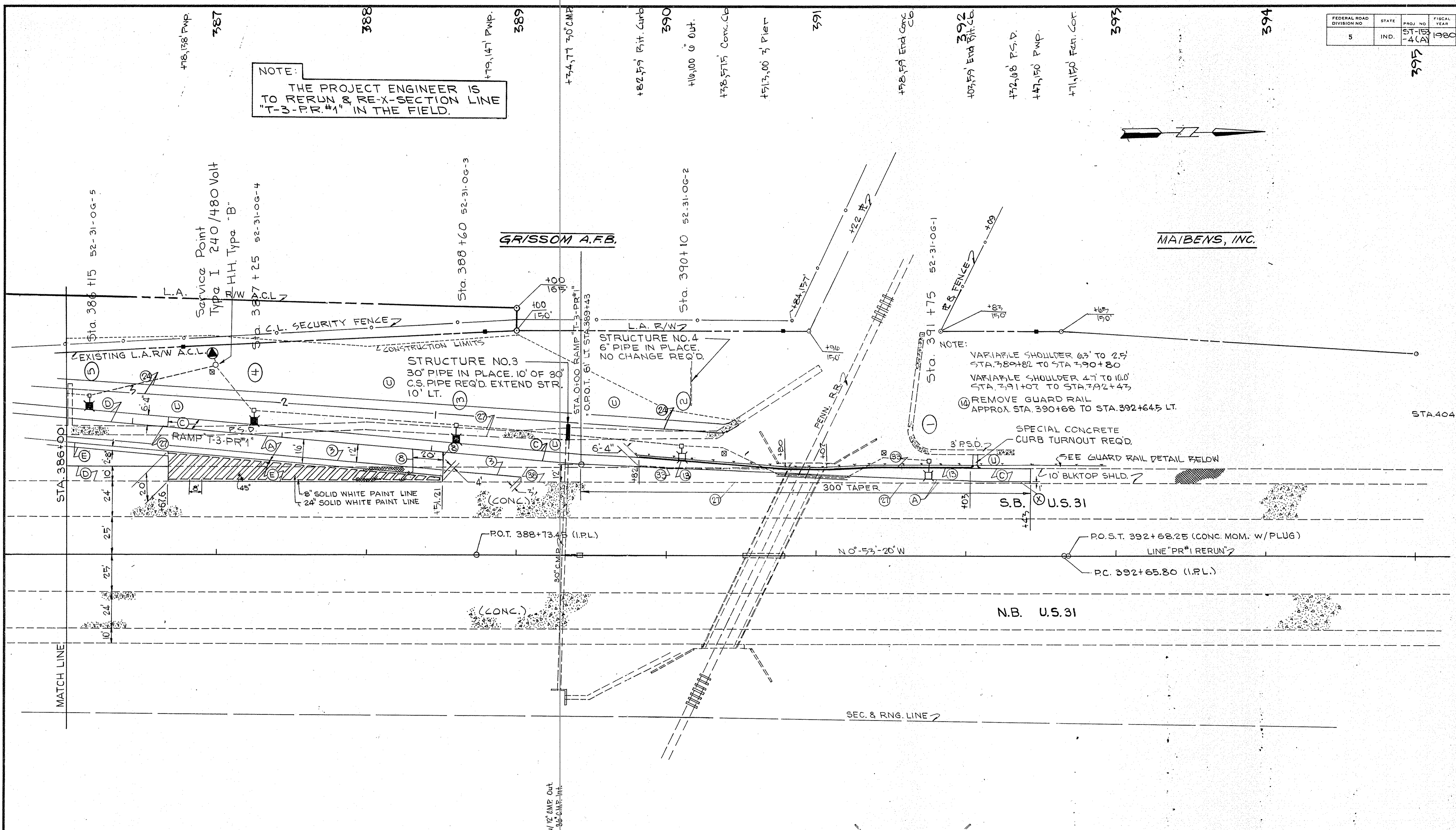
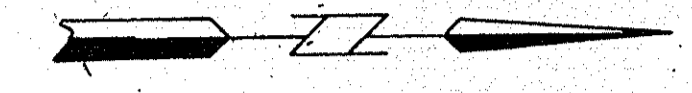
SCALE: 1" = 30'-0" DRAFTSMAN: S.R.G. DATE: 3-8-80



FEDERAL ROAD DIVISION NO.	STATE	PROJ. NO.	FISCAL YEAR	SHEET NO.	TOTAL SHEETS
5	IND.	5T-153-4 (A)	1980	5	45

395

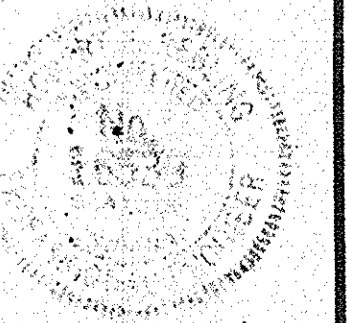
NOTE:
THE PROJECT ENGINEER IS TO RERUN & RE-X-SECTION LINE T-3-PR#1 IN THE FIELD.



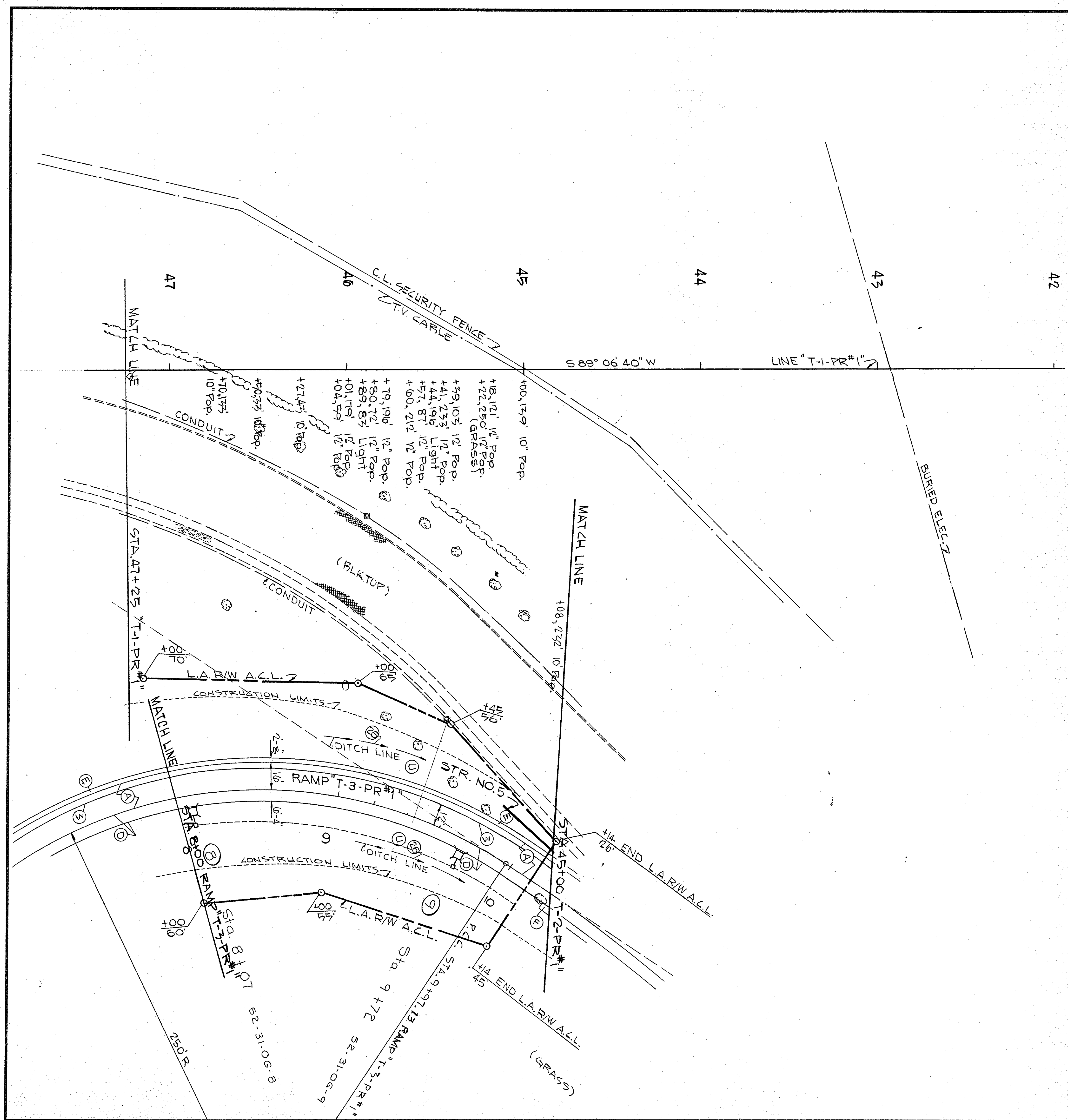
INDIANA STATE HIGHWAY COMMISSION
DIVISION OF TRAFFIC
CHANNELIZATION
U.S. 31 & RAMP ENTRANCE TO
GRISSOM A.F.B.
MIAMI COUNTY

Robert E. Bellamy

SCALE: 1"=30'-0" DRAFTSMAN: S.R.G. DATE: 3-8-80



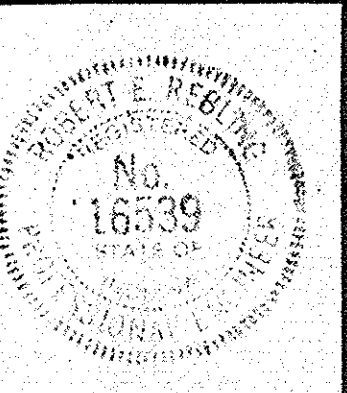
T-12622



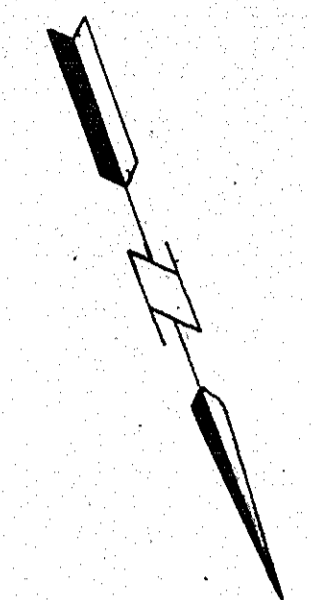
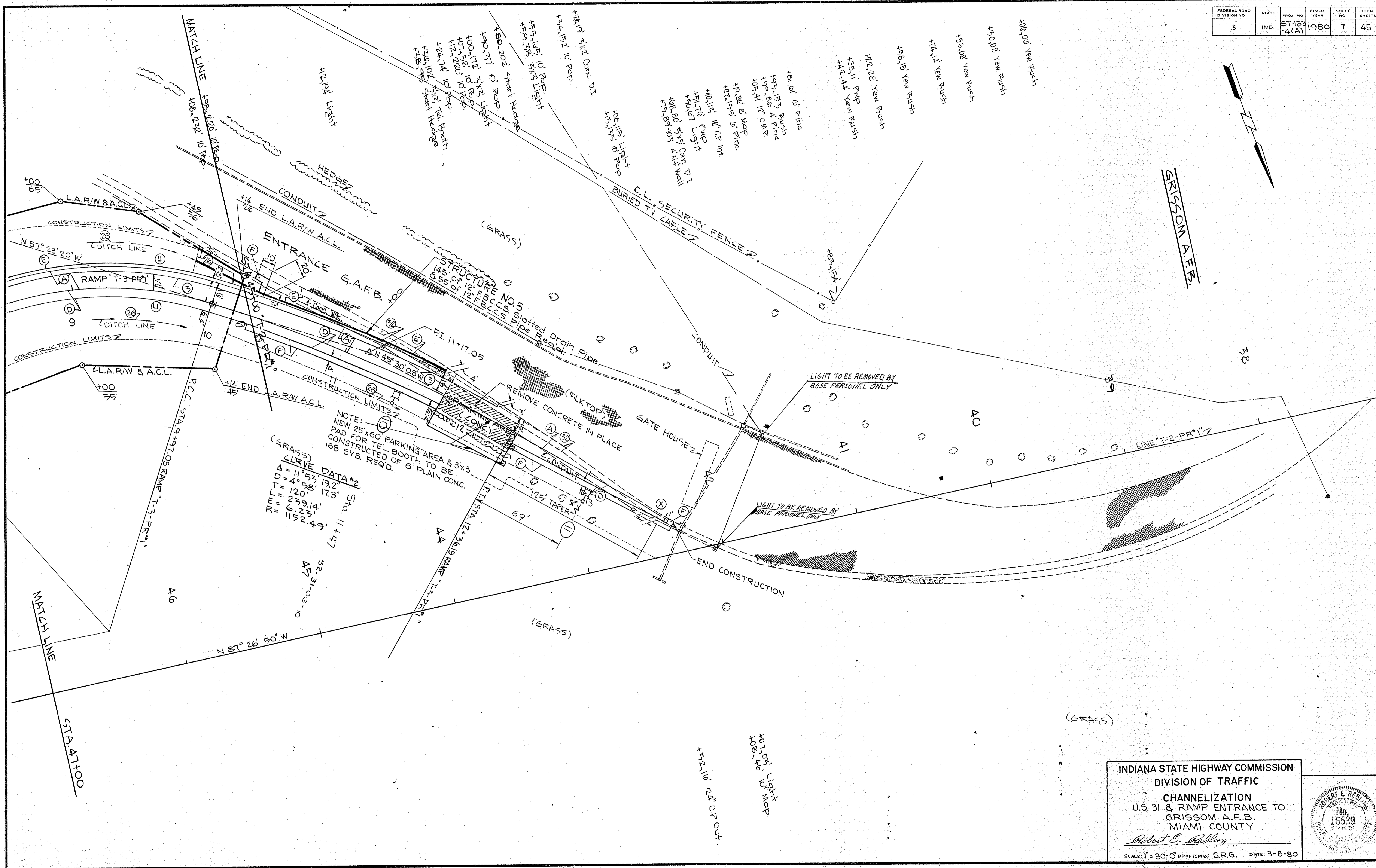
LUMINAIRE NO.	1	2	3	4	5	6	7	8	9	10	11
I FOUNDATION TYPE	X	X	X	X	X	X	X	X	X	X	X
II CIRCUIT CONN.	R	B	R	B	R	B	R	B	R	B	R
III CONNECTION TYPE	1	2	2	2	2	2	2	2	2	2	1
IV SET BACK	15	20	20	20	15	15	15	15	15	20	20
V MAST ARM	10	10	20	20	15	5	5	5	5	10	10
VI ELEVATION	+0.5	-0.4	-3.3	-3.4	-1.5	-1.5	-1.5	-1.5	-1.5	-2.0	-0.9
IV SET BACK in feet FROM	CURB										
	THRU LANE	✓	✓								✓
	TAPER										
				✓	✓	✓	✓	✓	✓	✓	

NOTES:
 For lighting legend see sheet no. 11.
 For service details see sheet no. 14.

INDIANA STATE HIGHWAY COMMISSION
 DIVISION OF TRAFFIC
 CHANNELIZATION
 U.S. 31 & RAMP ENTRANCE TO
 GRISSOM A.F.B.
 MIAMI COUNTY
Robert C. Adkins
 SCALE: 1"=30'-0" DRAFTSMAN S.R.G. DATE: 3-8-80

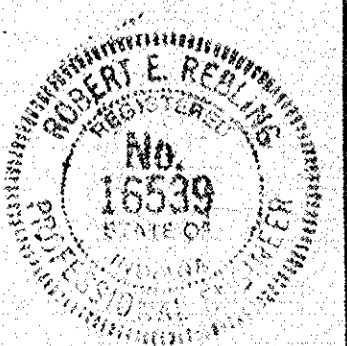


FEDERAL ROAD DIVISION NO	STATE	PROJ NO	FISCAL YEAR	SHEET NO	TOTAL SHEETS
5	IND	ST-183-4(A)	1980	7	45



GRISSOM AFB

INDIANA STATE HIGHWAY COMMISSION
 DIVISION OF TRAFFIC
 CHANNELIZATION
 U.S. 31 & RAMP ENTRANCE TO
 GRISSOM A.F.B.
 MIAMI COUNTY
Robert E. Redling
 SCALE: 1" = 30'-0" DRAFTSMAN: S.R.G. DATE: 3-8-80



FEDERAL ROAD DISTRICT NO.	STATE	PROJECT NO.	FISCAL YEAR	SHEET NO.	TOTAL SHEETS
IND	ST-F-70-9	1964	9		

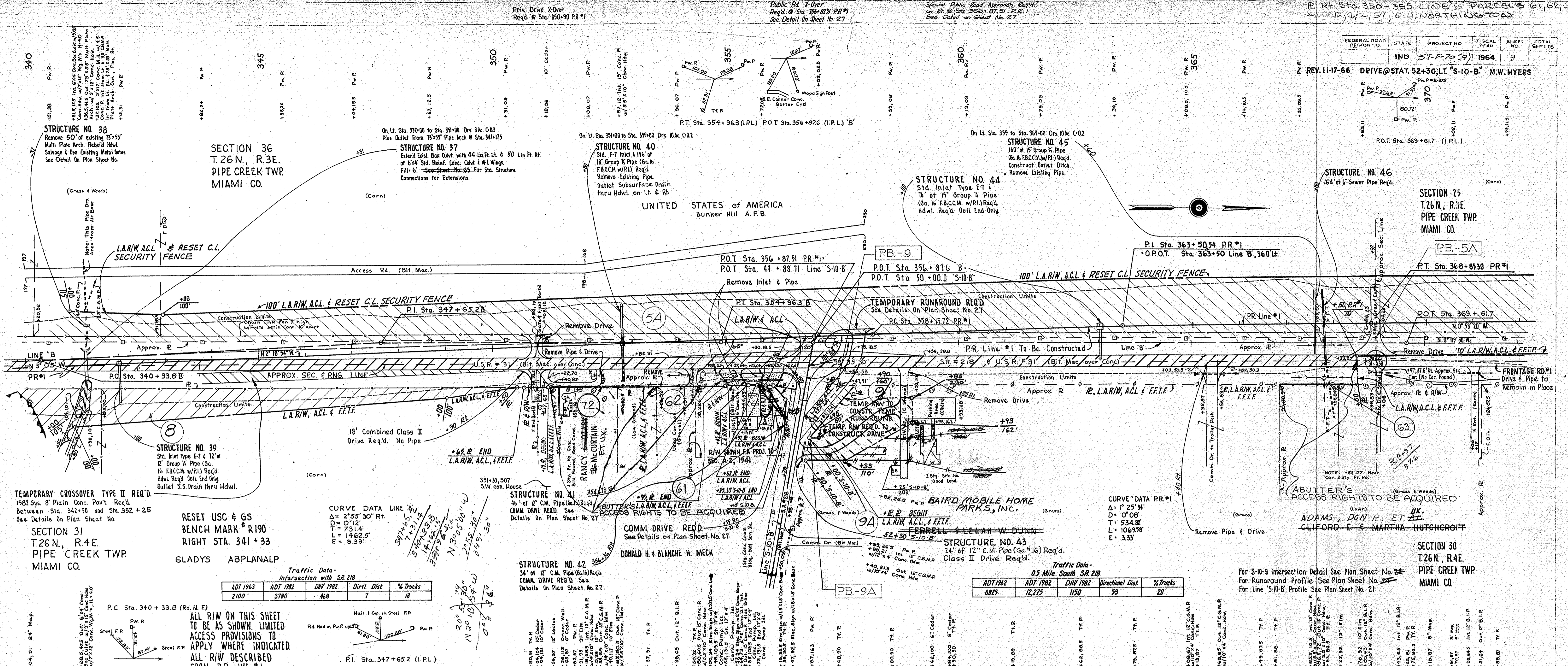
REV. 11-7-66 DRIVE @ STAT. 52+30, LT. 'S-10-B' M.W. MYERS

SECTION 36
 T.26N., R.3E.
 PIPE CREEK TWP.
 MIAMI CO.

SECTION 29
 T.26N., R.3E.
 PIPE CREEK TWP.
 MIAMI CO.

SECTION 30
 T.26N., R.4E.
 PIPE CREEK TWP.
 MIAMI CO.

UNITED STATES OF AMERICA
 Bunker Hill A.F.B.



RESET USC & GS
 BENCH MARK # R190
 RIGHT STA. 341+33
 GLADYS ABPLANALP

Traffic Data - Intersection with SR 218

ADT 1963	ADT 1962	DHV 1962	Dir't. Dist	% Trucks
2100	3780	468	7	18

Traffic Data - 0.5 Mile South SR 218

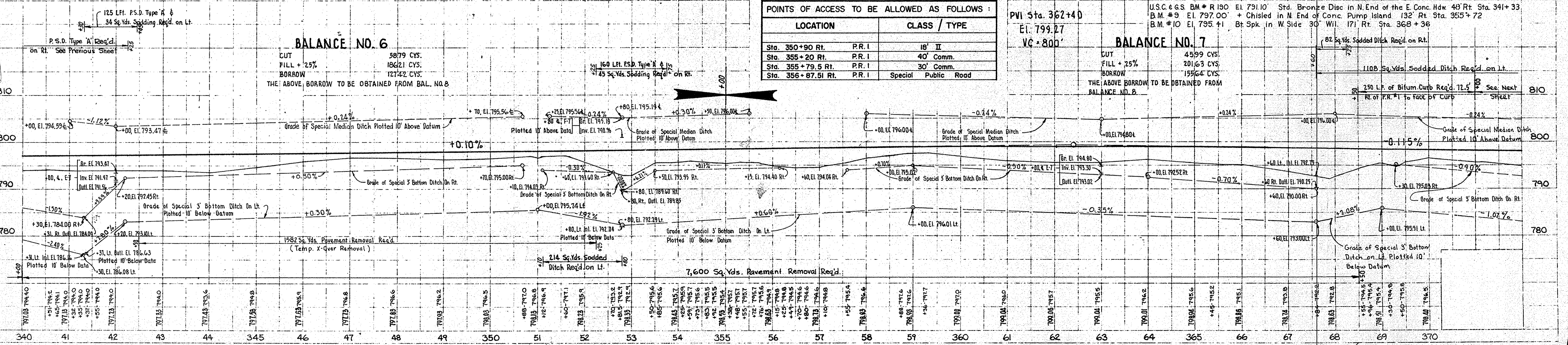
ADT 1962	ADT 1962	DHV 1962	Directional Dist.	% Trucks
6827	12,275	1150	53	20

POINTS OF ACCESS TO BE ALLOWED AS FOLLOWS:

LOCATION	CLASS / TYPE
Sta. 350+90 Rt.	P.R. I 18' II
Sta. 355+20 Rt.	P.R. I 40' Comm.
Sta. 355+79.5 Rt.	P.R. I 30' Comm.
Sta. 356+87.51 Rt.	P.R. I Special Public Road

BALANCE NO. 6
 CUT 5879 CY.
 FILL + 25% 18621 CY.
 BORROW 12742 CY.
 THE ABOVE BORROW TO BE OBTAINED FROM BAL. NO. 8

BALANCE NO. 7
 CUT 4599 CY.
 FILL + 25% 20163 CY.
 BORROW 19564 CY.
 THE ABOVE BORROW TO BE OBTAINED FROM BALANCE NO. 8



PLAN
 CHAS. W. COLE & SON
 CIVIL ENGINEERS
 8667 L

PROFILE
 CHAS. W. COLE & SON
 CIVIL ENGINEERS
 8667 L

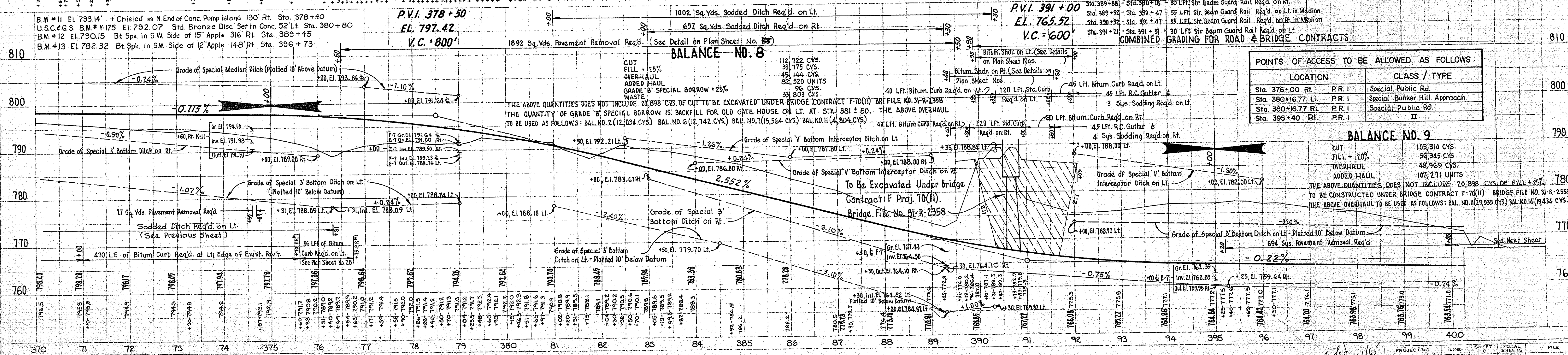
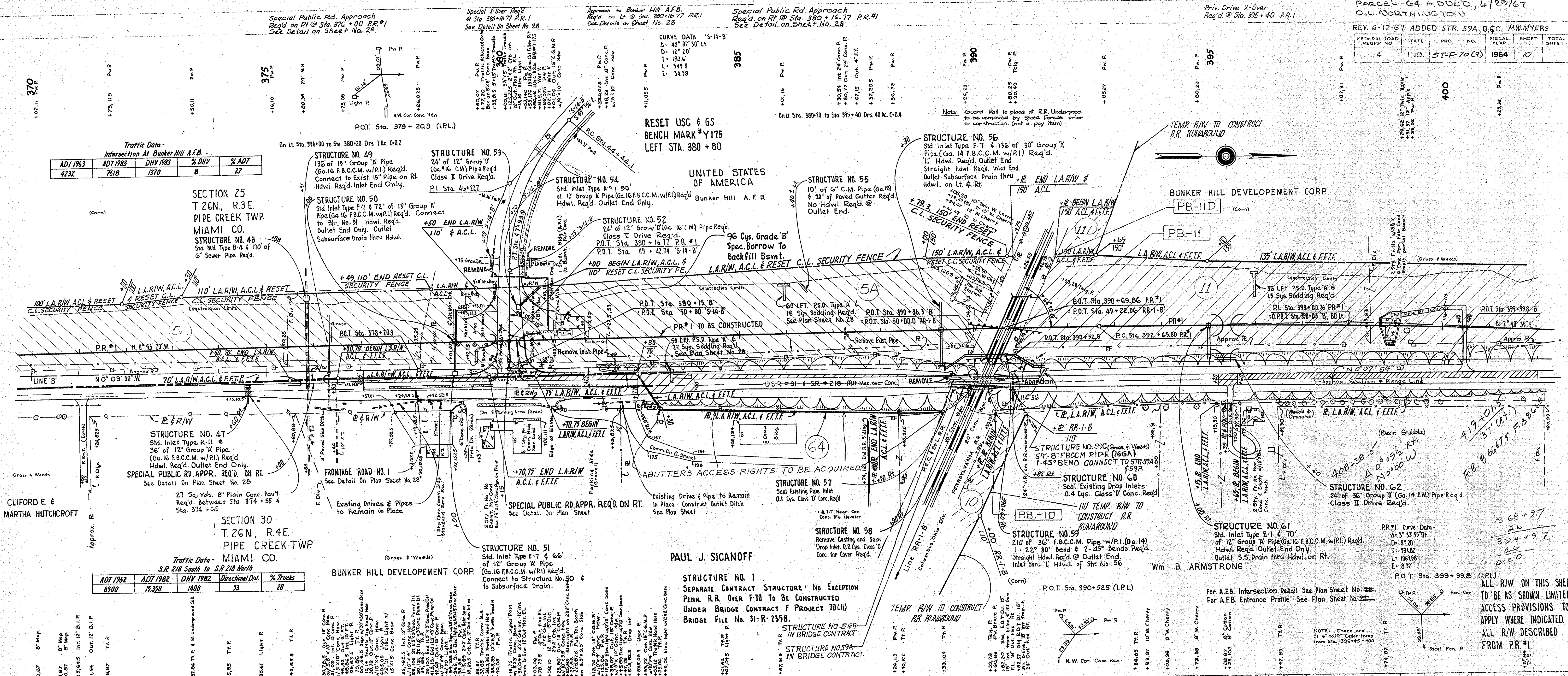
PLAN
NO. 8666 T
DATE: 10/11/65
BY: M.W.MYERS
CHECKED: H.R.M. CALE & SON
DATE: 11/18/65
BY: H.R.M. CALE & SON
DATE: 11/18/65
BY: H.R.M. CALE & SON

Traffic Data - Intersection At Bunker Hill A.F.B.

ADT 1963	ADT 1965	DHV 1963	% DHV	% ADT
4232	7618	1370	8	27

Traffic Data - MIAMI CO.
S.R. 218 South to S.R. 218 North

ADT 1962	ADT 1962	DHV 1962	Directional Dist.	% Trucks
8500	13,350	1400	53	20



POINTS OF ACCESS TO BE ALLOWED AS FOLLOWS:

LOCATION	CLASS / TYPE
Sta. 376+00 Rt. P.R. I	Special Public Rd.
Sta. 380+16.77 Lt. P.R. I	Special Bunker Hill Approach
Sta. 380+16.77 Rt. P.R. I	Special Public Rd.
Sta. 395+40 Rt. P.R. I	II

BALANCE NO. 9

CUT	105,314 CYS.
FILL + 20% OVERHAUL	56,345 CYS.
ADDED HAUL	48,969 CYS.
WASTE	107,271 UNITS

THE ABOVE QUANTITIES DOES NOT INCLUDE 20,898 CYS. OF CUT TO BE EXCAVATED UNDER BRIDGE CONTRACT F-70(II) BRIDGE FILE NO. 31-R-2358 TO BE CONSTRUCTED UNDER BRIDGE CONTRACT F-70(II) BRIDGE FILE NO. 31-R-2358 THE ABOVE OVERHAUL TO BE USED AS FOLLOWS: BAL. NO. 2 (12,034 CYS.) BAL. NO. 6 (12,742 CYS.) BAL. NO. 7 (15,564 CYS.) BAL. NO. 11 (4,804 CYS.)

BALANCE NO. 8

CUT	112,722 CYS.
FILL + 25% OVERHAUL	33,775 CYS.
ADDED HAUL	45,144 CYS.
WASTE	82,520 UNITS

THE ABOVE QUANTITIES DOES NOT INCLUDE 20,898 CYS. OF CUT TO BE EXCAVATED UNDER BRIDGE CONTRACT F-70(II) BRIDGE FILE NO. 31-R-2358 TO BE CONSTRUCTED UNDER BRIDGE CONTRACT F-70(II) BRIDGE FILE NO. 31-R-2358 THE ABOVE OVERHAUL TO BE USED AS FOLLOWS: BAL. NO. 2 (12,034 CYS.) BAL. NO. 6 (12,742 CYS.) BAL. NO. 7 (15,564 CYS.) BAL. NO. 11 (4,804 CYS.)

BALANCE NO. 8 (continued)

CUT	112,722 CYS.
FILL + 25% OVERHAUL	33,775 CYS.
ADDED HAUL	45,144 CYS.
WASTE	82,520 UNITS