

STATE OF INDIANA
STATE HIGHWAY COMMISSION

FEDERAL ROAD DISTRICT NO.	STATE	FED. AID PROJ. YEAR	SHEET NO.	TOTAL SHEETS
7	IND.	70	1	40

SECTION A

INDEX

SHEET NO. 1	TITLE SHEET.
SHEET NO. 2	STANDARD CROSS SECTIONS.
SHEET NO. 3-7	PLAN AND PROFILE.
SHEET NO. 8	BRIDGE AND CULVERT DATA AND ESTIMATE OF QUANTITIES.
SHEET NO. 9	MISCELLANEOUS STANDARDS.
SHEET NO. 10	STANDARD R.C. BOX CULVERTS.
SHEET NO. 11	STANDARD R.C. CULVERTS (5'-10').
SHEET NO. 12	STANDARD REINFORCEMENT OF PAVEMENT AT STRUCTURES.
SHEET NO. 13	STANDARD DETOUR SIGNS.
SHEET NO. 14-15	CROSS SECTIONS.
SHEET NO. 16	STANDARD R.C. CULVERTS (10'-20').

PLAN AND PROFILE OF PROPOSED

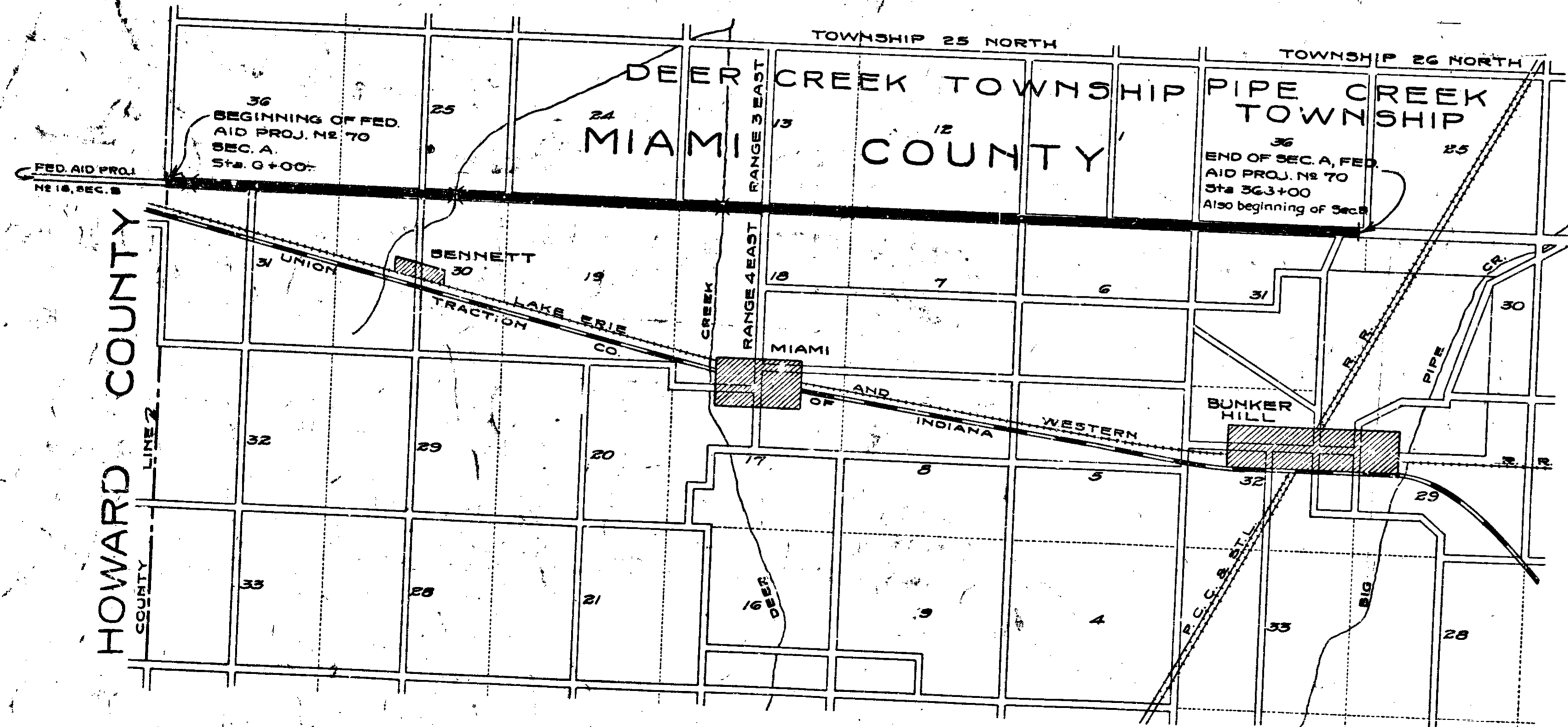
STATE HIGHWAY

FED. AID PROJ. NO. 70-SEC. A.

RANGE LINE ROAD

BEGINNING ON THE RANGE LINE ROAD AT THE NORTH LINE OF HOWARD COUNTY, THENCE IN A NORTHERLY DIRECTION TO A POINT 31.2 FEET SOUTH OF THE NORTH LINE OF SECTION 36, T. 26 N. R. 3 E. PIPE CREEK TOWNSHIP, MIAMI COUNTY. LENGTH = 6.969 MILES

PLAN { HOR. 1"=100'
TRANS. 1"=100' } SCALES PROFILE { HOR. 1"=100'
VERT. 1"=10' }



REVISIONS		
DATE	REVISED	SHEET NO.
7-22-38	R/W	3, 4

CONVENTIONAL SIGNS

STATE AND NATIONAL LINE	RETAINING WALL
COUNTY LINE	LEVEL
CITY, VILLAGE OR BOROUGH	CULVERTS
TOWNSHIP LINE	DROP INLET
SECTION LINE	TROLLEY POLE
SUB DIVISION LINE	POWER POLE
RIGHT OF WAY LINE	TELEPHONE OR TELEGRAPH POLES
FENCE LINE (BARBED WIRE)	MARSH
(RAIL)	HEDGE
(WORM)	BASE OR SURVEY LINE
(STONE)	GROUND ELEVATION
UNFENCED PROPERTY	GRADE ELEVATION
TRAVELED WAY	
RAILROADS	

INDIANA STATE HIGHWAY STANDARD SPECIFICATIONS, ON FILE WITH U. S. BUREAU OF PUBLIC ROADS, TO BE USED WITH THESE PLANS.

APPROVED DATE July 17, 1923
John D. Williams
 DIRECTOR - INDIANA STATE HIGHWAY COMMISSION

APPROVED DATE July 17, 1923
[Signature]
 CHIEF ENGINEER - INDIANA STATE HIGHWAY COMMISSION

RECOMMENDED FOR APPROVAL
 DISTRICT ENGINEER - BUREAU OF PUBLIC ROADS

RECOMMENDED FOR APPROVAL
 CHIEF ENGINEER - BUREAU OF PUBL. ROADS

APPROVED
 DIRECTOR - BUREAU OF PUBLIC ROADS

HOWARD CO.

MIAMI CO.
SEC. 36 T-25N R-3-E
DEERCREEK TWP

J.H. THOMAS
STRUCTURE NO. 1
6.5' Span in place
No Changes Required

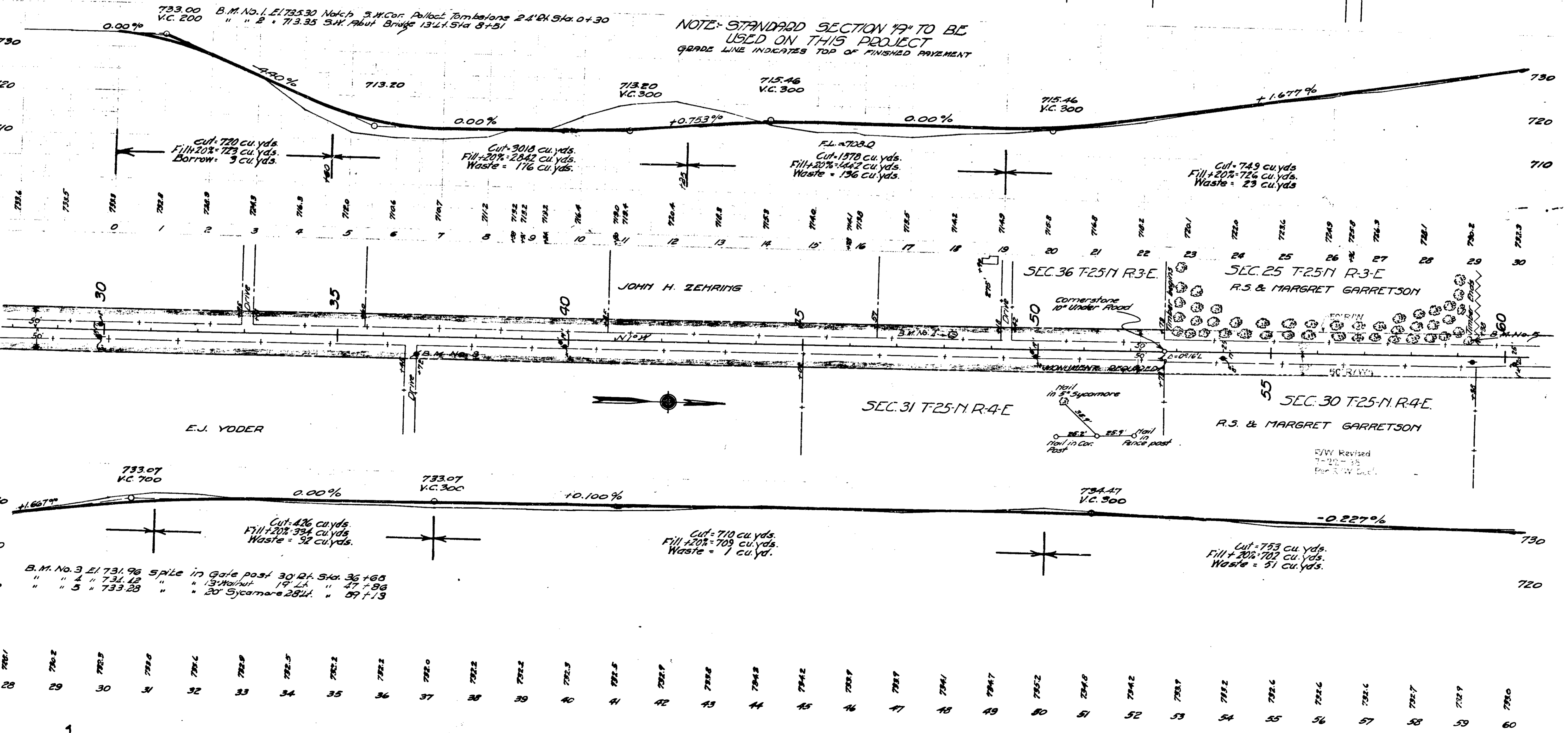
FEDERAL ROAD DISTRICT NO.	STATE	ED. AND FISCAL YEAR	SHEET NO.	TOTAL SHEETS
7	IND	70 1923	3	40

SECTION 7
JOHN H. ZEHRING
22-22-36

BEGINNING OF PROJECT STA. 0+00

SEC. 31 T-25-N R-4-E NOTE: ALL RIGHT OF WAY OF THIS PROJECT 50'-2.5' EACH SIDE & 7'S LOCATED

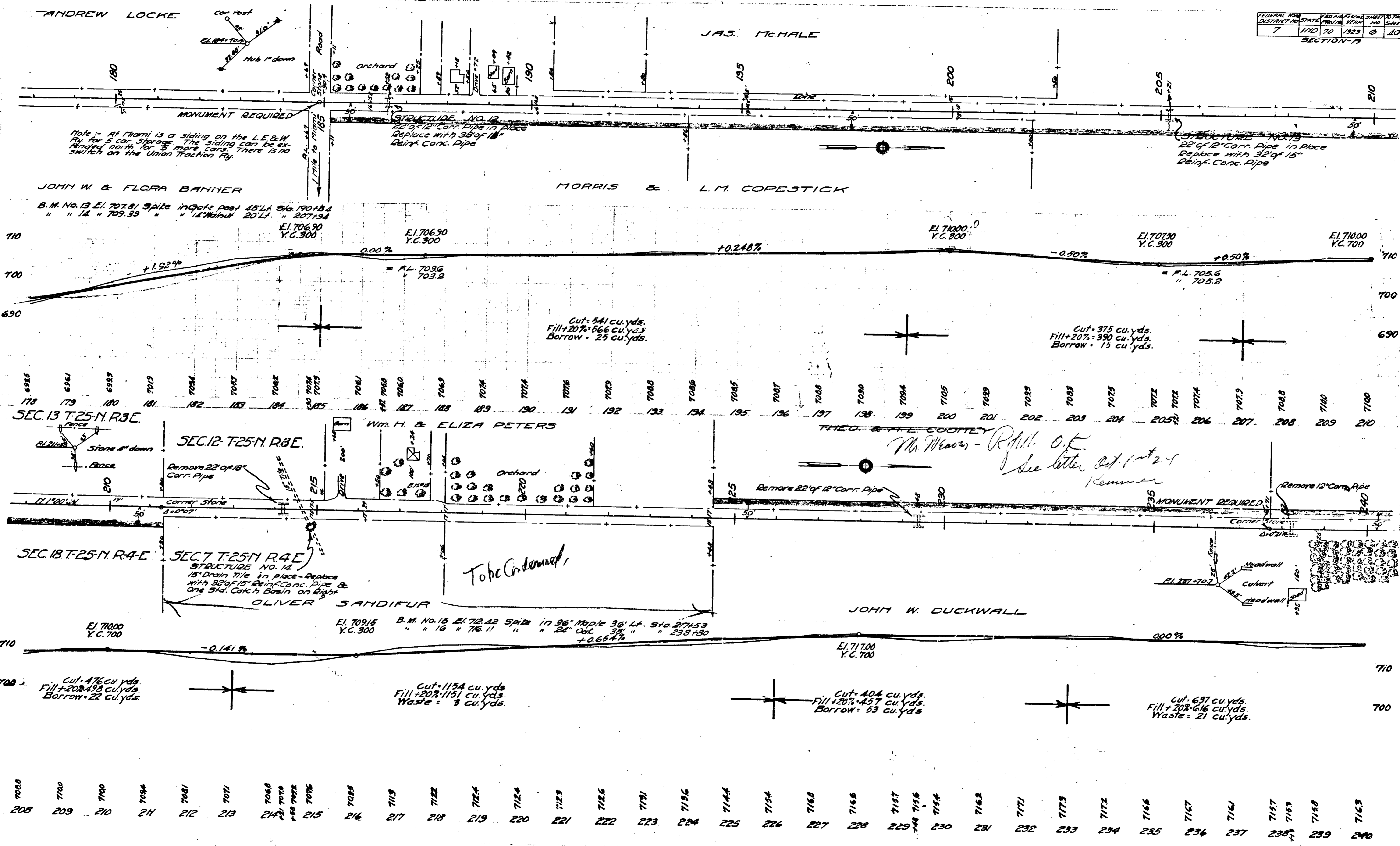
NOTE: STANDARD SECTION 19" TO BE USED ON THIS PROJECT
GRADE LINE INDICATES TOP OF FINISHED PAVEMENT



B.M. No. 3 El. 731.96 spike in Gate post 30' at Sta. 36+65
 " " 4 " 731.42 " " 19' " " 47+86
 " " 5 " 733.28 " " 20' Sycamore 284' " 59+13

FEDERAL DISTRICT NO.	STATE	FED. ROAD DIST. NO.	SECTION	SHEET NO.	TOTAL SHEETS
7	FLA.	70	1923	6	10

SECTION - F

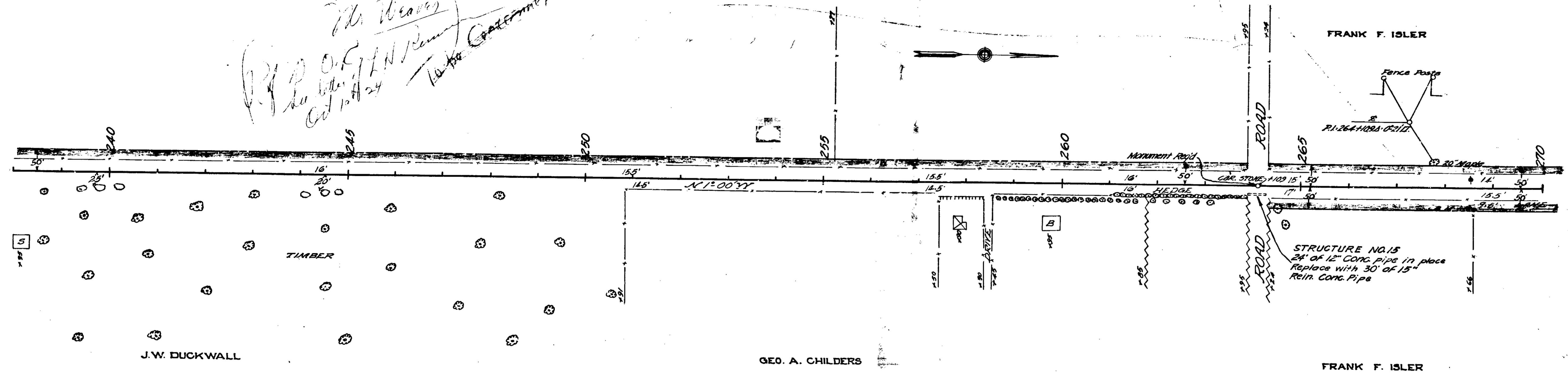


FEDERAL ROAD DISTRICT NO.	STATE	FED. AID FISCAL YEAR	SHEET NO.	TOTAL SHEETS
7	IND	70	7	10

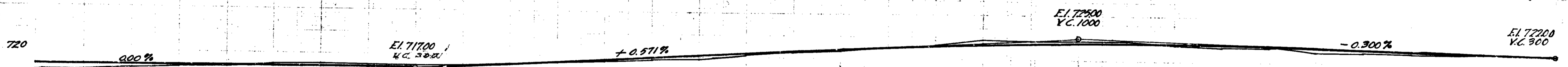
SECTION - 19

THEO. A. L. COONEY

Handwritten notes:
 Mr. Weaver
 O.C. H.N. Rem
 Oct 12/24
 To the Chief Engineer



B.M. NO. 17 Elev. 721.67 Spike in Gate Post 25' Nt. Sta. 268+66



Cut = 625 cu. yds.
 Fill + 20% = 543 cu. yds.
 Waste = 82 cu. yds.

Cut = 441 cu. yds.
 Fill + 20% = 424 cu. yds.
 Waste = 17 cu. yds.

- 7157
- 7158
- 7159
- 7160
- 7161
- 7162
- 7163
- 7164
- 7165
- 7166
- 7167
- 7168
- 7169
- 7170
- 7171
- 7172
- 7173
- 7174
- 7175
- 7176
- 7177
- 7178
- 7179
- 7180
- 7181
- 7182
- 7183
- 7184
- 7185
- 7186
- 7187
- 7188
- 7189
- 7190
- 7191
- 7192
- 7193
- 7194
- 7195
- 7196
- 7197
- 7198
- 7199
- 7200
- 7201
- 7202
- 7203
- 7204
- 7205
- 7206
- 7207
- 7208
- 7209
- 7210
- 7211
- 7212
- 7213
- 7214
- 7215
- 7216
- 7217
- 7218
- 7219
- 7220
- 7221
- 7222
- 7223
- 7224
- 7225
- 7226
- 7227
- 7228
- 7229
- 7230

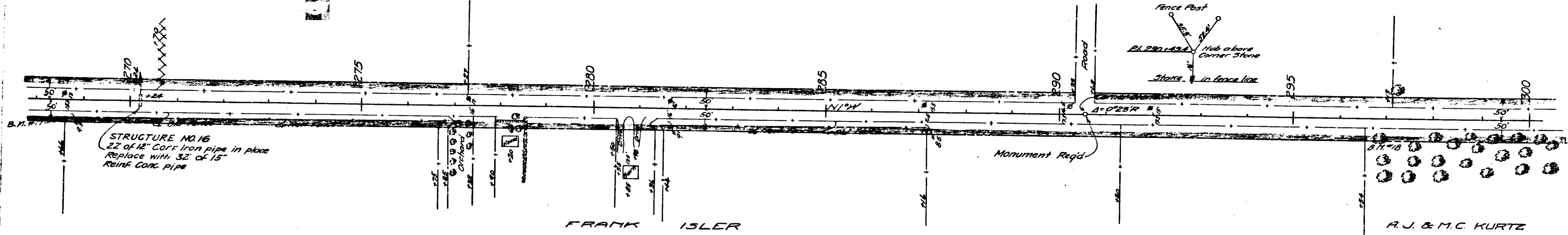
FEDERAL DISTRICT NO.	STATE	RD NO.	FISCAL YEAR	SHEET NO.	TOTAL SHEETS
7	1170	70	1923	8	40

SECTION-A

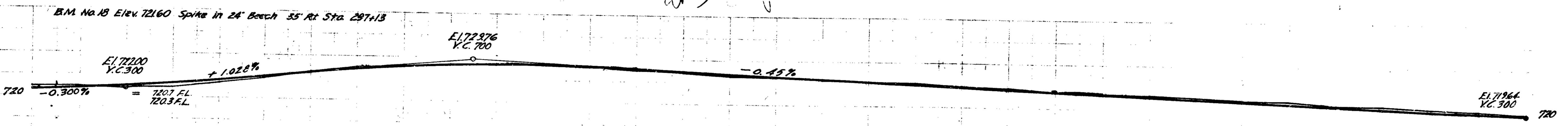
FRANK ISLER

JOHN SCHROCK

U. Dartman
Engr. 1500
6-23



*to be
Amended
see plan*



Cut = 603 cu. yds.
Fill + 20% = 605 cu. yds.
Borrow = 2 cu. yds.

Cut = 634 cu. yds.
Fill + 20% = 624 cu. yds.
Waste = 10 cu. yds.

- 7222 268
- 7224 269
- 7220 270
- 7222 270
- 7223 271
- 7224 272
- 7243 273
- 7264 274
- 7279 275
- 7279 276
- 7281 277
- 7283 278
- 7285 279
- 7281 280
- 7276 281
- 7271 282
- 7265 283
- 7262 284
- 7259 285
- 7256 286
- 7254 287
- 7249 288
- 7245 289
- 7239 290
- 7240 290
- 7238 291
- 7232 292
- 7210 293
- 7224 294
- 7220 295
- 7214 296
- 7213 297
- 7209 298
- 7206 299
- 7200 300

Rev'd

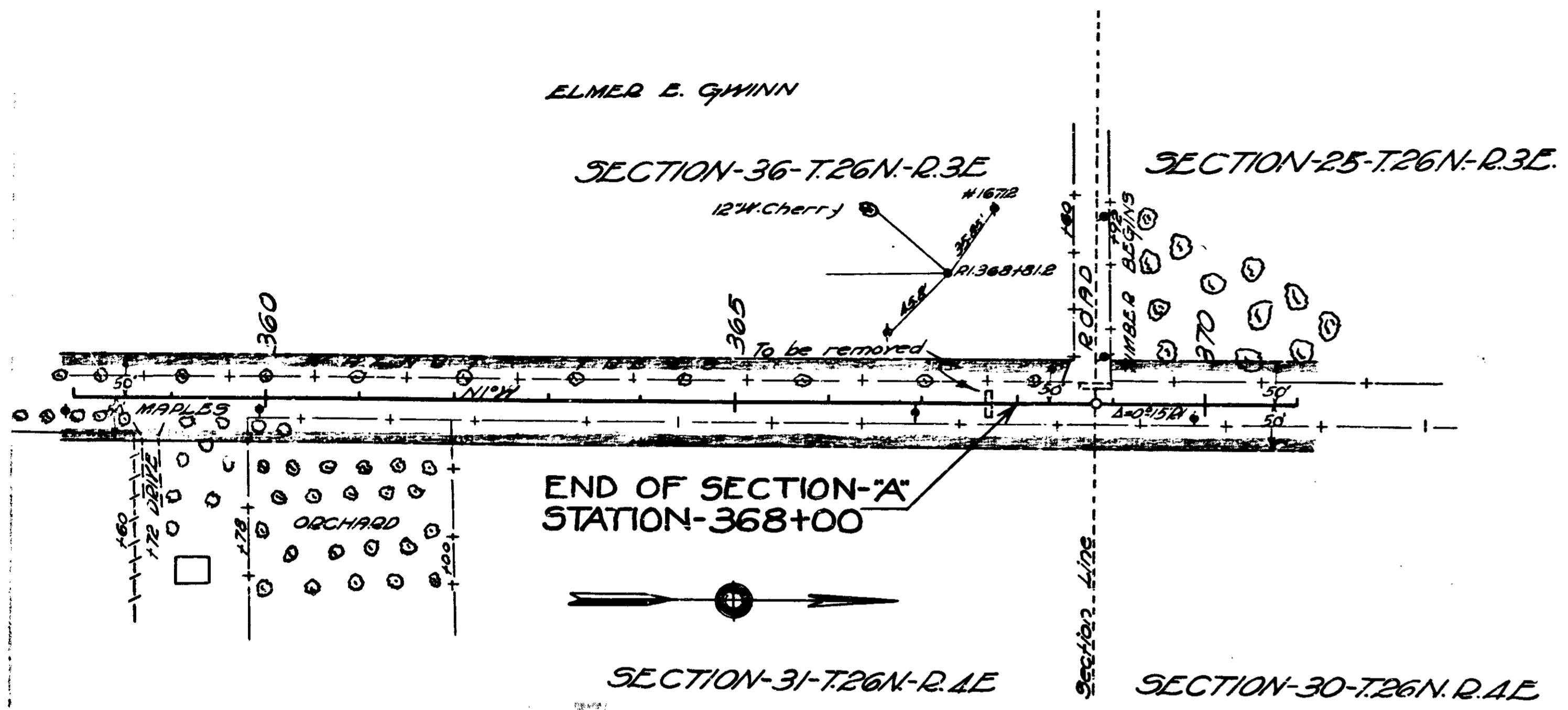
PROJECT NO.	DATE	BY	NO.	TOTAL SHEETS
7	IND.	70	1223	11

SECTION-19

ELMER E. GWINN

SECTION-36-T.26N-R.3E

SECTION-25-T.26N-R.3E



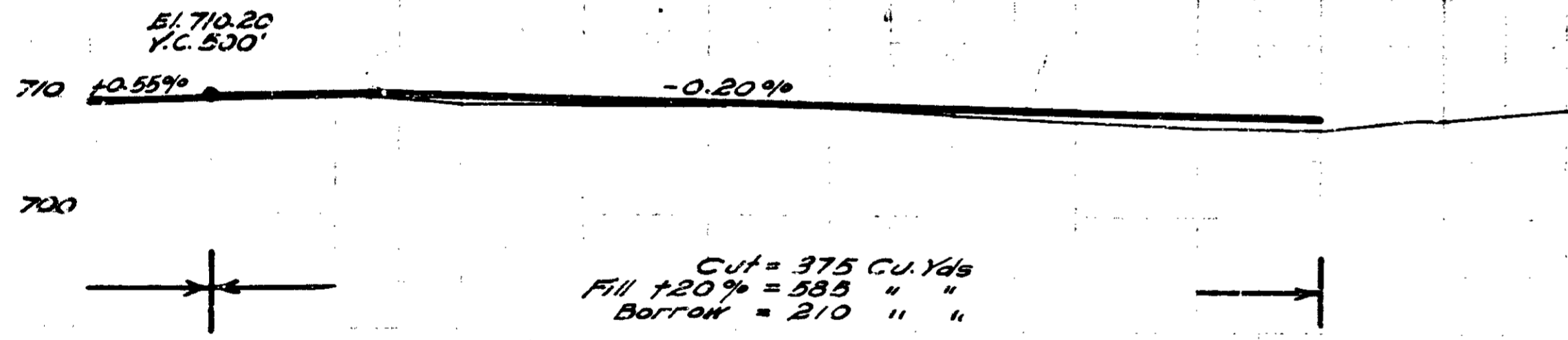
END OF SECTION 'A'
STATION-368+00



SECTION-31-T.26N-R.4E

SECTION-30-T.26N-R.4E

ELMER E. GWINN



FROM	TO	STATION
358	59	710.5
360	61	709.4
362	62	709.5
363	63	709.5
364	64	709.8
365	65	708.7
366	66	708.1
367	67	707.6
368	68	707.6
369	69	707.5
370	70	708.5
370.5	70.5	709.5

END STR