

CONTRACT NO. B-15331

BRIDGES OVER 20' SPAN				
SHEET NO.	STATE	PROJECT NO.	TYPE	DATE
5	IND.	100	I	50

PROJECT	STRUCTURE	TYPE	SPAN	OVER	STATION
MAF-153-4 (6)	3I-52-4857B	BRIDGE DECK RECONSTRUCTION AND OVERLAY	92', 5 @ 122'-6", 92'	WABASH RIVER	
MAFR-153-4 (6)	3I-52-2317B		52'-6", 2 @ 70', 52'-6"	U.S. 24 and N&W RAILWAY	
MAFR-144-6 (5)	3I-52-2318B		52'-6", 63', 52'-6"	C&O RAILWAY	
MAFR-153-4 (6)	3I-52-4858A		30', 40', 30'	PRAIRIE DITCH	

SHEET NO.	SHEET DESIGNATION	SUBJECT	I.N.H.A. APPROVAL
1	ONE SHEET	INDEX & TITLE SHEET	
2, 3, 4	THREE SHEETS	TRAFFIC MAINTENANCE DETAILS	
5	D1	CONSTRUCTION PROCEDURE GENERAL NOTES, & MISCELLANEOUS DETAILS	
6	D2	GENERAL PLAN (4857B)	
7	D3	REPAIR DETAILS	
8	D4	REPAIR DETAILS	
9	D5	EXPANSION JOINT CLASS S-S	
10	D6	BARRIER RAILING TYPE "X" DETAILS	
11	D7	GENERAL PLAN (2317B)	
12	D8	REPAIR DETAILS	
13	D9	REPAIR DETAILS	
14	D10	GENERAL PLAN (2318B)	
15	D11	SECTIONS & DETAILS	
16	D12	BENT N#1 & N#4 S.B. & N.B. DETAILS	
17	D13	BENT N#1 & N#4 S.B. & N.B. DETAILS	
18	D14	PIER N#2 & N#3 S.B. & N.B. DETAILS	
19	D15	STRUCTURAL STEEL DETAILS	
20	D16	FLOOR DETAILS S.B.L.	
21	D17	FLOOR DETAILS N.B.L.	
22	D18	FLOOR DETAILS S.B.L. & N.B.L.	
23	D19	WIDENED R.C. BRIDGE APPROACH DETAILS	
24	D20	GENERAL PLAN (4858A)	
25	D21	RAILING REPAIR DETAILS	
26	ONE SHEET	BRIDGE SUMMARY	
27	ONE SHEET	ESTIMATE OF QUANTITIES	

**TRAFFIC DATA-ADT (1978)**

STR. 4857B-11300
STR. 2317B-9900
STR. 2318B-12200
STR. 4858A-12200

NOTE: WHEREVER "INDIANA STATE HIGHWAY COMMISSION" APPEARS IN THESE PLANS, IT SHALL BE INTERPRETED AS "INDIANA DEPARTMENT OF HIGHWAYS"

NOTE: WHENEVER FR-153-4 (8) APPEARS IN THESE PLANS OR CONTRACT DOCUMENTS IT SHALL BE INTERPRETED AS MAFR-153-4 (8), MAFR-153-4 (6), MAFR-144-6 (5)

REVISIONS	
DATE	SHEET NO.
2-7-85	U.S. 24 & 24
4-20-85	U.S.

REVISIONS	
DATE	SHEET NO.

INDIANA DEPARTMENT OF HIGHWAYS  
STANDARD SPECIFICATIONS DATED 1985  
TO BE USED WITH THESE PLANS.

**INDIANA DEPARTMENT OF HIGHWAYS**

**BRIDGE PLANS  
FOR SPANS OVER 20 FEET  
ON**

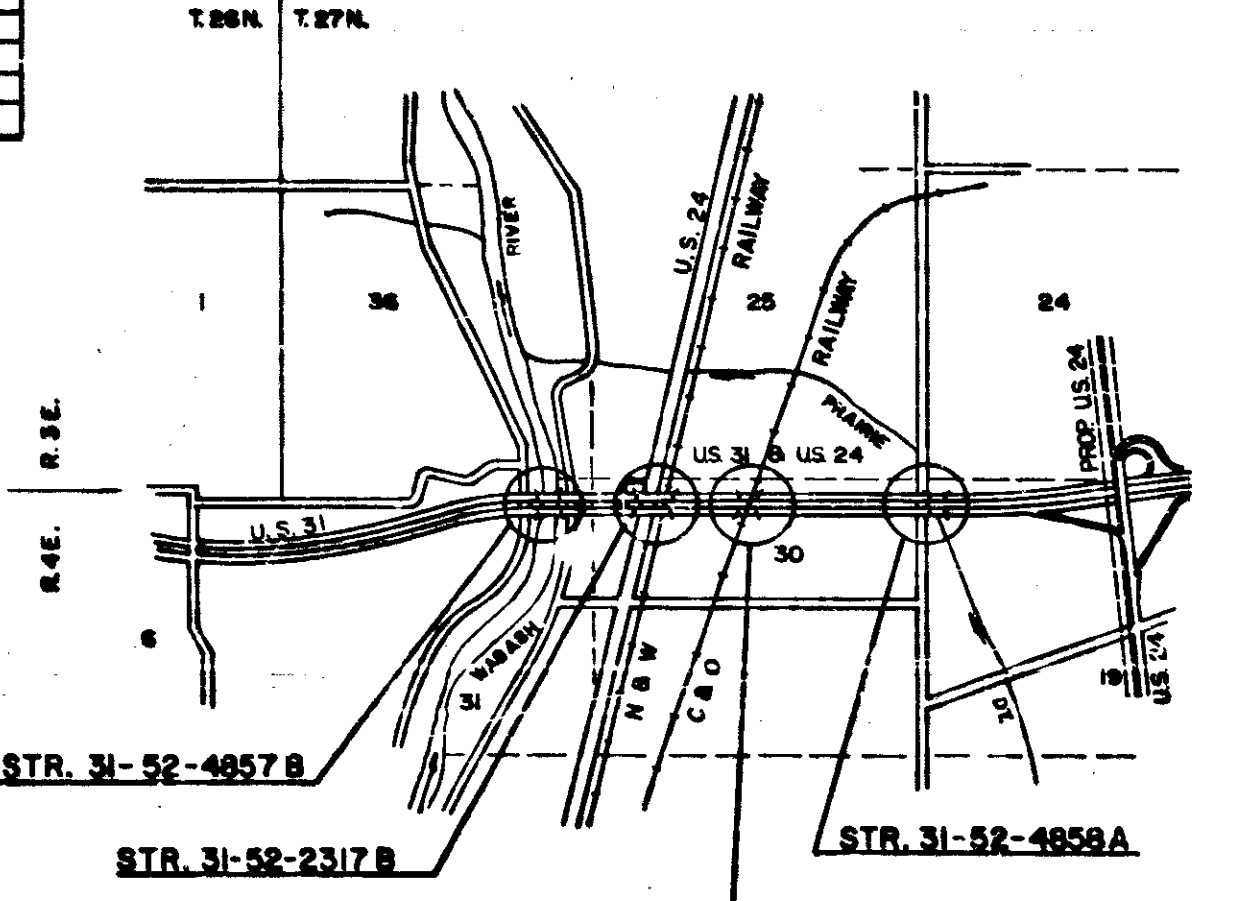
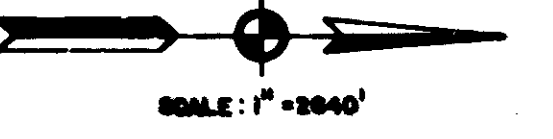
**U.S. ROUTE NO. 31 & 24  
PROJECT NO. MAF-153-4 (6)  
MAFR-153-4 (8)  
MAFR-144-6 (5)**

THIS STRUCTURE IS LOCATED ON U.S. 31, APPROXIMATELY 2.1 MILES SOUTH OF U.S. 24, IN SECTION 31, T-27-N, R-4-E, MIAMI COUNTY, INDIANA.  
STR. N# 31-52-4857B

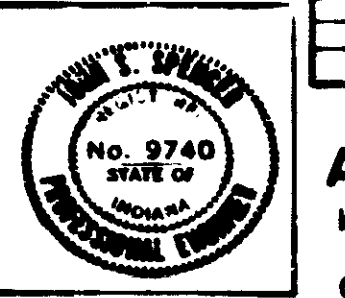
THIS STRUCTURE IS LOCATED ON U.S. 31, APPROXIMATELY 1.8 MILES SOUTH OF U.S. 24, IN SECTION 30, T-27-N, R-4-E, MIAMI COUNTY, INDIANA.  
STR. N# 31-52-2317B

THIS STRUCTURE IS LOCATED ON U.S. 31, APPROXIMATELY 1.8 MILES SOUTH OF U.S. 24, IN SECTION 30, T-27-N, R-4-E, MIAMI COUNTY, INDIANA.  
STR. N# 31-52-2318B

THIS STRUCTURE IS LOCATED ON U.S. 31, APPROXIMATELY 0.9 MILES SOUTH OF U.S. 24, IN SECTION 19, T-27-N, R-4-E, MIAMI COUNTY, INDIANA.  
STR. N# 31-52-4858A



**MIAMI COUNTY**



**INDEX CONTINUED  
STANDARD DRAWINGS**

SHEET NO.	SHEET DESIGNATION	SUBJECT	I.N.H.A. APPROVAL
BRIDGE STD. BR1	ALUMINUM BRIDGE RAILING		
BRIDGE STD. BR2	ALUMINUM BRIDGE RAILING DETAILS		
BRIDGE STD. BR3	STEEL BRIDGE RAILING		
BRIDGE STD. BR4	STEEL BRIDGE RAILING DETAILS		
BRIDGE STD. BR5	RAILING CONNECTION DETAILS		R-12-7-84
BRIDGE STD. BR6	RAILING CONNECTION DETAILS		
BRIDGE STD. C1	MISCELLANEOUS DETAILS		12-21-81 R-27-81
BRIDGE STD. C2	MISCELLANEOUS DETAILS		
BRIDGE STD. C3	MISCELLANEOUS DETAILS		12-21-81 R-27-81
BRIDGE STD. D	CASTING DETAILS ROADWAY DRAINS		
BRIDGE STD. P1	PRESTRESSED CONCRETE TYPE I-BEAMS		
BRIDGE STD. P2	PRESTRESSED CONCRETE TYPE I-BEAMS		
BRIDGE STD. P3	PRESTRESSED CONCRETE TYPE I-BEAMS		
BRIDGE STD. P4	PRESTRESSED CONCRETE TYPE I-BEAMS		
BRIDGE STD. P5	PRESTRESSED CONCRETE TYPE I-BEAMS		
BRIDGE STD. P6	PRESTRESSED CONCRETE TYPE I-BEAMS		
BRIDGE STD. P7	PRESTRESSED CONCRETE TYPE I-BEAMS		
BRIDGE STD. P8	PRESTRESSED CONCRETE TYPE I-BEAMS		
BRIDGE STD. P9	PRESTRESSED CONCRETE TYPE I-BEAMS		
BRIDGE STD. P10	PRESTRESSED CONCRETE TYPE I-BEAMS		
BRIDGE STD. P11	PRESTRESSED CONCRETE TYPE I-BEAMS		
BRIDGE STD. P12	PRESTRESSED CONCRETE TYPE I-BEAMS		
BRIDGE STD. P13	PRESTRESSED CONCRETE TYPE I-BEAMS		
BRIDGE STD. P14	PRESTRESSED CONCRETE TYPE I-BEAMS		
BRIDGE STD. P15	PRESTRESSED CONCRETE TYPE I-BEAMS		
BRIDGE STD. P16	PRESTRESSED CONCRETE TYPE I-BEAMS		
BRIDGE STD. P17	PRESTRESSED CONCRETE TYPE I-BEAMS		
BRIDGE STD. P18	PRESTRESSED CONCRETE TYPE I-BEAMS		
BRIDGE STD. P19	PRESTRESSED CONCRETE TYPE I-BEAMS		
BRIDGE STD. P20	PRESTRESSED CONCRETE TYPE I-BEAMS		
BRIDGE STD. P21	PRESTRESSED CONCRETE TYPE I-BEAMS		
BRIDGE STD. P22	PRESTRESSED CONCRETE TYPE I-BEAMS		
BRIDGE STD. P23	PRESTRESSED CONCRETE TYPE I-BEAMS		
BRIDGE STD. P24	PRESTRESSED CONCRETE TYPE I-BEAMS		
BRIDGE STD. P25	PRESTRESSED CONCRETE TYPE I-BEAMS		
BRIDGE STD. P26	PRESTRESSED CONCRETE TYPE I-BEAMS		
BRIDGE STD. P27	PRESTRESSED CONCRETE TYPE I-BEAMS		
BRIDGE STD. P28	PRESTRESSED CONCRETE TYPE I-BEAMS		
BRIDGE STD. P29	PRESTRESSED CONCRETE TYPE I-BEAMS		
BRIDGE STD. P30	PRESTRESSED CONCRETE TYPE I-BEAMS		
BRIDGE STD. P31	PRESTRESSED CONCRETE TYPE I-BEAMS		
BRIDGE STD. P32	PRESTRESSED CONCRETE TYPE I-BEAMS		
BRIDGE STD. P33	PRESTRESSED CONCRETE TYPE I-BEAMS		
BRIDGE STD. P34	PRESTRESSED CONCRETE TYPE I-BEAMS		
BRIDGE STD. P35	PRESTRESSED CONCRETE TYPE I-BEAMS		
BRIDGE STD. P36	PRESTRESSED CONCRETE TYPE I-BEAMS		
BRIDGE STD. P37	PRESTRESSED CONCRETE TYPE I-BEAMS		
BRIDGE STD. P38	PRESTRESSED CONCRETE TYPE I-BEAMS		
BRIDGE STD. P39	PRESTRESSED CONCRETE TYPE I-BEAMS		
BRIDGE STD. P40	PRESTRESSED CONCRETE TYPE I-BEAMS		
BRIDGE STD. P41	PRESTRESSED CONCRETE TYPE I-BEAMS		
BRIDGE STD. P42	PRESTRESSED CONCRETE TYPE I-BEAMS		
BRIDGE STD. P43	PRESTRESSED CONCRETE TYPE I-BEAMS		
BRIDGE STD. P44	PRESTRESSED CONCRETE TYPE I-BEAMS		
BRIDGE STD. P45	PRESTRESSED CONCRETE TYPE I-BEAMS		
BRIDGE STD. P46	PRESTRESSED CONCRETE TYPE I-BEAMS		
BRIDGE STD. P47	PRESTRESSED CONCRETE TYPE I-BEAMS		
BRIDGE STD. P48	PRESTRESSED CONCRETE TYPE I-BEAMS		
BRIDGE STD. P49	PRESTRESSED CONCRETE TYPE I-BEAMS		
BRIDGE STD. P50	PRESTRESSED CONCRETE TYPE I-BEAMS		

PLANS PREPARED BY  
**AMERICAN CONSULTING ENGINEERS**  
INDIANAPOLIS, INDIANA  
CERTIFIED BY: *John J. Jones* DATE: SEPT 17, 1984

APPROVED: *E. W. Walters*  
STATE HIGHWAY ENGINEER

RECOMMENDED FOR APPROVAL: *W. Adams*

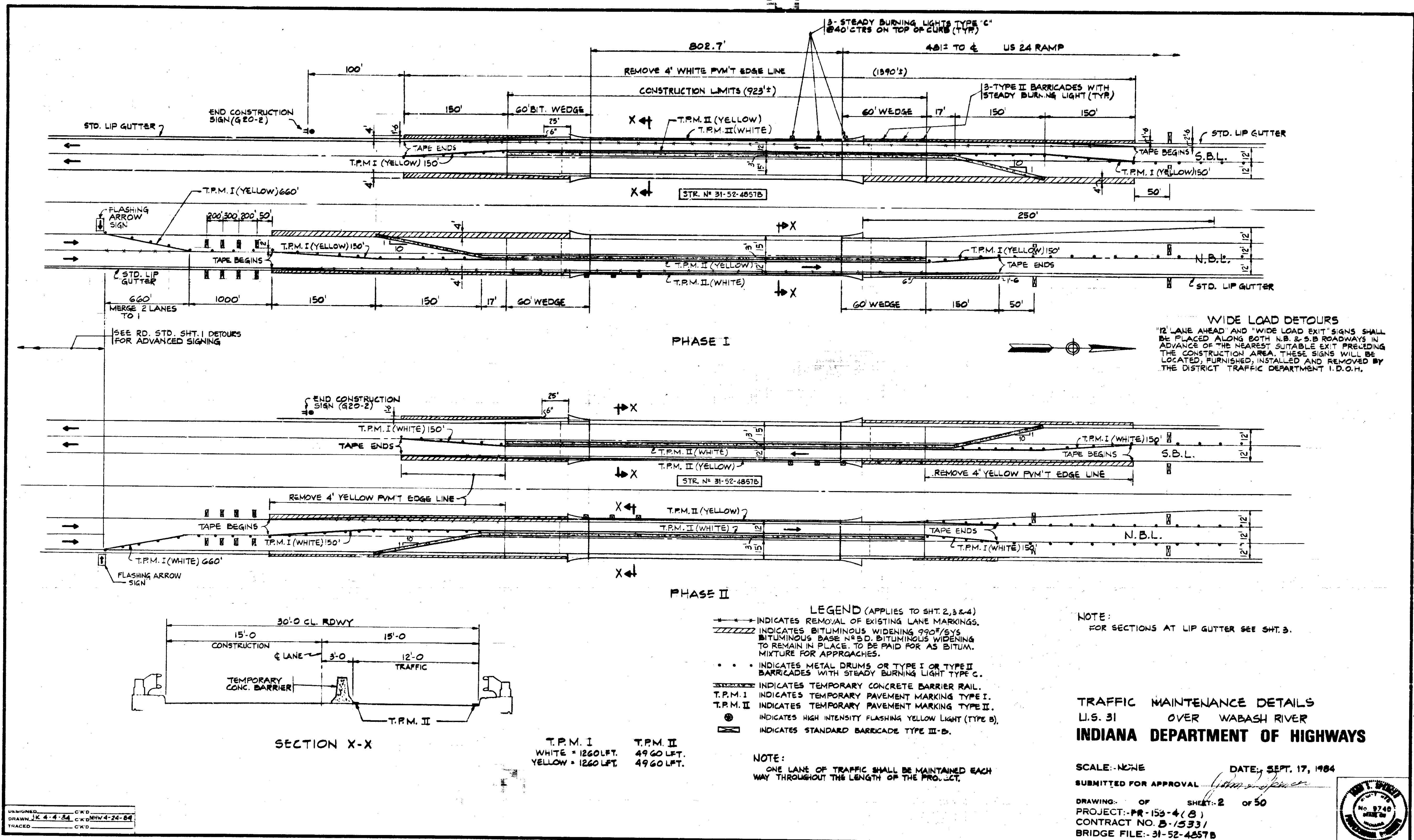


FEDERAL HIGHWAY ADMINISTRATION  
DEPARTMENT OF TRANSPORTATION

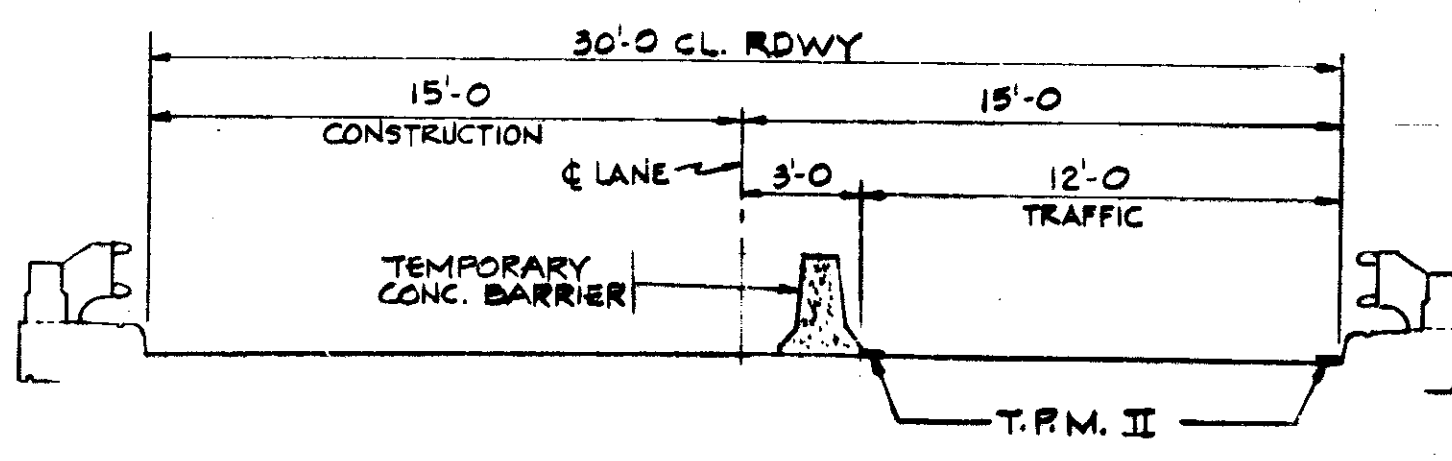
APPROVED: \_\_\_\_\_

DIVISION ADMINISTRATOR DATE

BRIDGE FILE: 3I-52-4857B, 3I-52-2317B, 3I-52-2318B, 3I-52-4858A



DESIGNED: CKD  
 DRAWN: JK 4-4-84 CKD/MHW 4-24-84  
 TRACED: CKD



SECTION X-X

T.P.M. I  
 WHITE = 1260 LFT.  
 YELLOW = 1260 LFT.

T.P.M. II  
 4960 LFT.  
 4960 LFT.

- LEGEND (APPLIES TO SHT. 2, 3 & 4)
- INDICATES REMOVAL OF EXISTING LANE MARKINGS.
  - /// INDICATES BITUMINOUS WIDENING 990#/SYS BITUMINOUS BASE N.B.D. BITUMINOUS WIDENING TO REMAIN IN PLACE. TO BE PAID FOR AS BITUM. MIXTURE FOR APPROACHES.
  - INDICATES METAL DRUMS OR TYPE I OR TYPE II BARRICADES WITH STEADY BURNING LIGHT TYPE C.
  - INDICATES TEMPORARY CONCRETE BARRIER RAIL.
  - T.P.M. I INDICATES TEMPORARY PAVEMENT MARKING TYPE I.
  - T.P.M. II INDICATES TEMPORARY PAVEMENT MARKING TYPE II.
  - ⊙ INDICATES HIGH INTENSITY FLASHING YELLOW LIGHT (TYPE B).
  - ⊠ INDICATES STANDARD BARRICADE TYPE III-B.

NOTE:  
 ONE LANE OF TRAFFIC SHALL BE MAINTAINED EACH WAY THROUGHOUT THE LENGTH OF THE PROJECT.

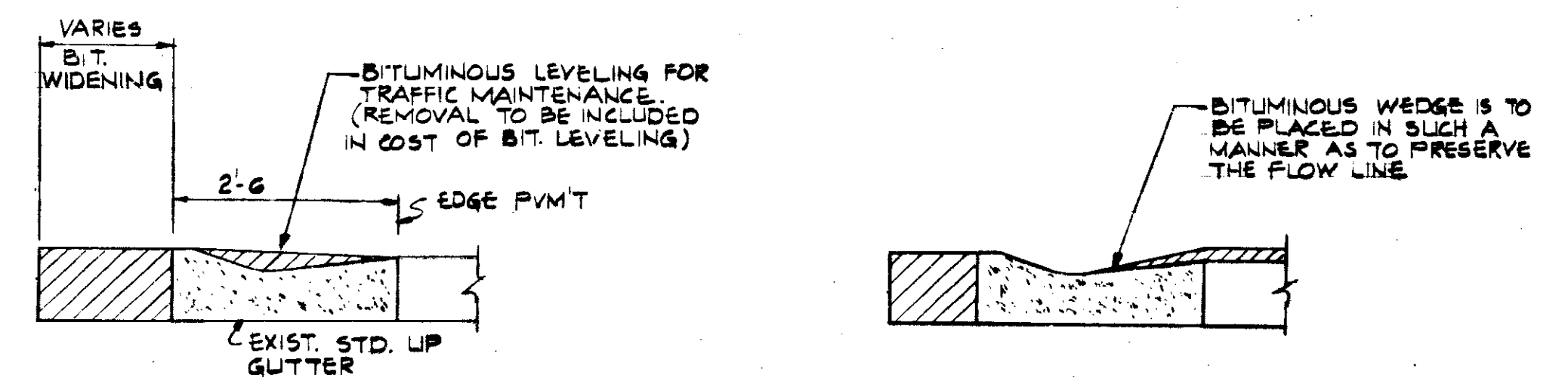
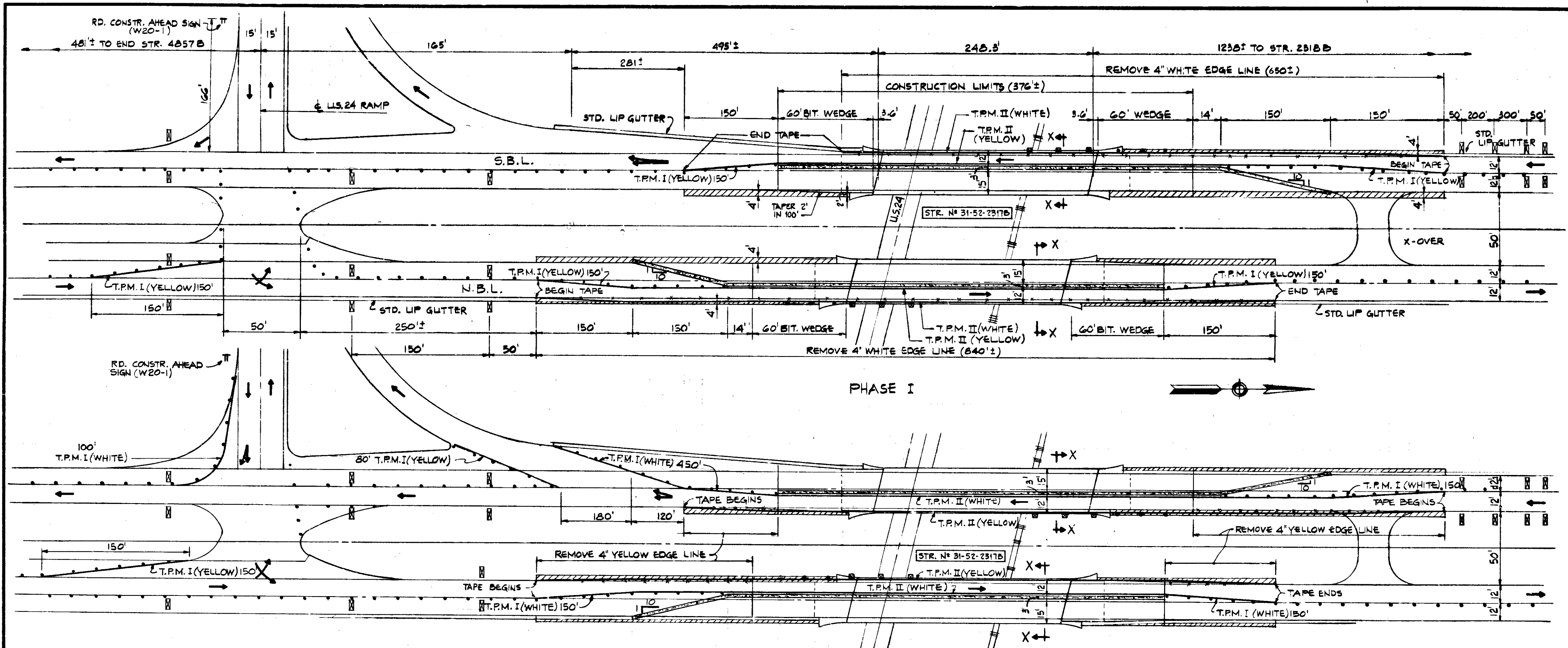
NOTE:  
 FOR SECTIONS AT LIP GUTTER SEE SHT. 3.

TRAFFIC MAINTENANCE DETAILS  
 U.S. 31 OVER WABASH RIVER  
 INDIANA DEPARTMENT OF HIGHWAYS

SCALE: NONE DATE: SEPT. 17, 1984  
 SUBMITTED FOR APPROVAL: *[Signature]*

DRAWING: OF SHEET: 2 OF 50  
 PROJECT: PR-153-4(B)  
 CONTRACT NO. B-15331  
 BRIDGE FILE: 31-52-4857B





TYP. SECTIONS AT LIP GUTTERS

PHASE I

PHASE II

NOTE:  
FOR SECTION X-X AND LEGEND SEE SHT. 2

T.P.M. I  
WHITE = 1000 LFT.  
YELLOW = 980 LFT.

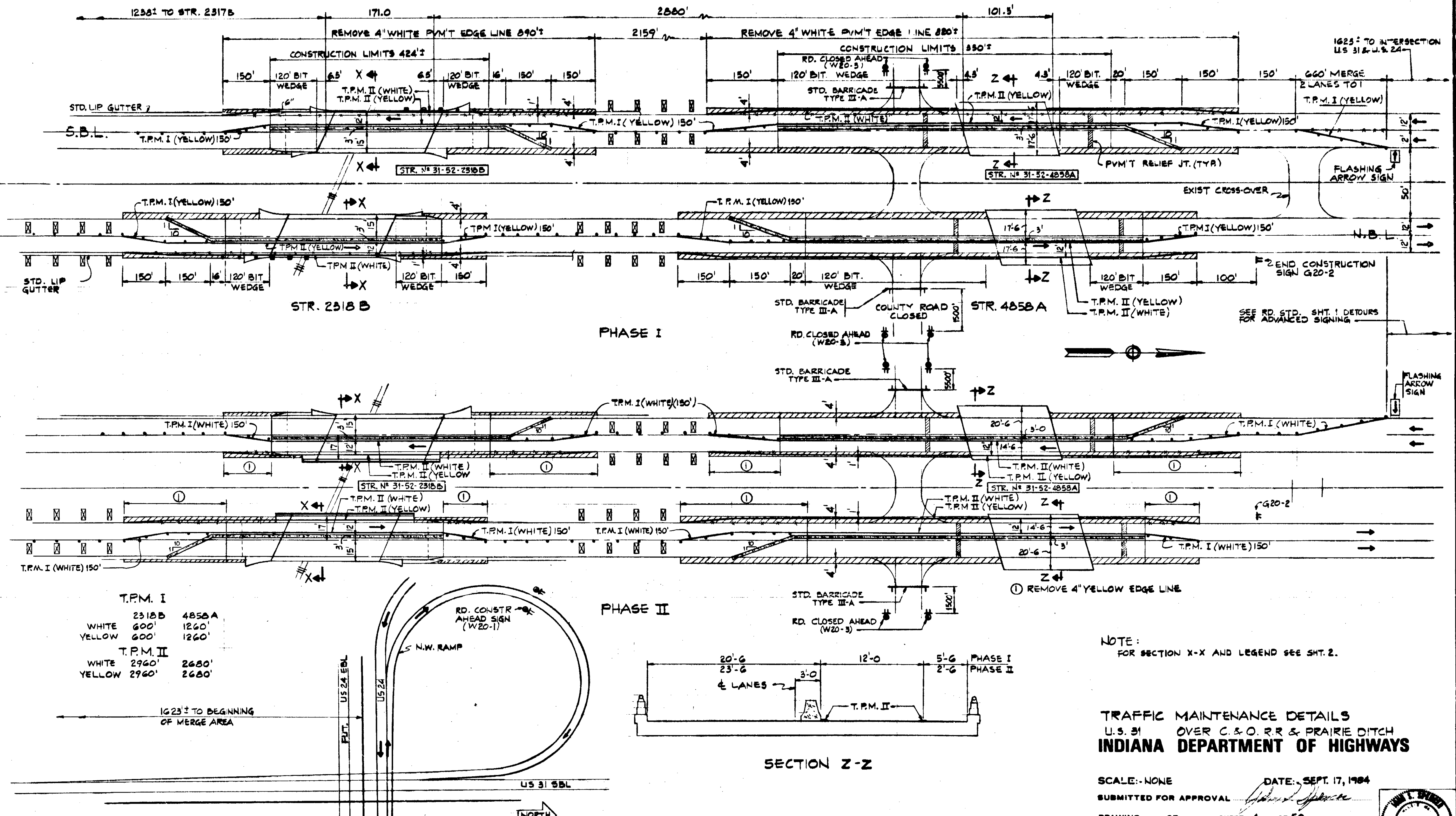
T.P.M. II  
WHITE = 2570 LFT.  
YELLOW = 2760 LFT.

TRAFFIC MAINTENANCE DETAILS  
US 31 OVER US 24 & N&W RR  
INDIANA DEPARTMENT OF HIGHWAYS

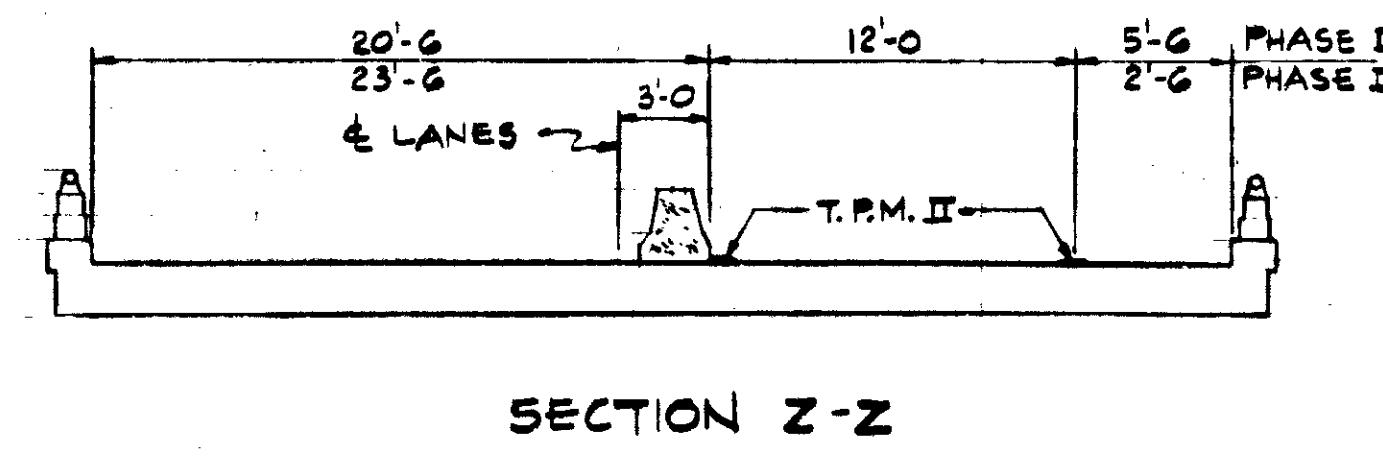
SCALE: NONE DATE: SEPT. 17, 1964  
SUBMITTED FOR APPROVAL *[Signature]*  
DRAWING OF SHEET 5 OF 50  
PROJECT: FR-155-4 (8)  
CONTRACT NO. B-15331  
BRIDGE FILE: 31-52-2317B



DESIGNED: CKD  
DRAWN: J. G. 4-5-64 CKD MHW 423-64  
TRACED: CKD



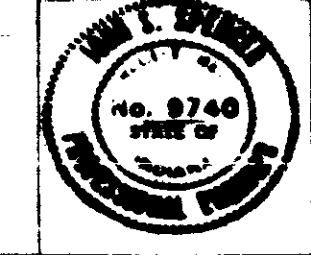
T.P.M. I	2318B	4858A
WHITE	600'	1260'
YELLOW	600'	1260'
T.P.M. II	2960'	2680'
WHITE	2960'	2680'
YELLOW	2960'	2680'



NOTE:  
FOR SECTION X-X AND LEGEND SEE SHT. 2.

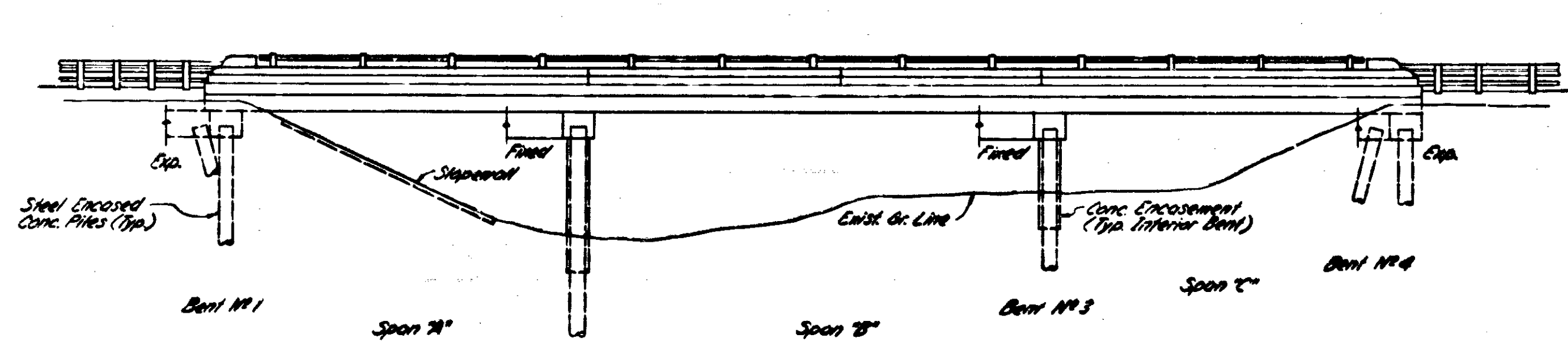
**TRAFFIC MAINTENANCE DETAILS**  
 U.S. 31 OVER C.&O. R.R. & PRAIRIE DITCH  
**INDIANA DEPARTMENT OF HIGHWAYS**

SCALE: NONE DATE: SEPT. 17, 1964  
 SUBMITTED FOR APPROVAL [Signature]  
 DRAWING: OF SHEET: 4 OF 50  
 PROJECT: FR-153-4(8)  
 CONTRACT NO. B-7533/  
 BRIDGE FILE: 31-52-2318B & 4858A

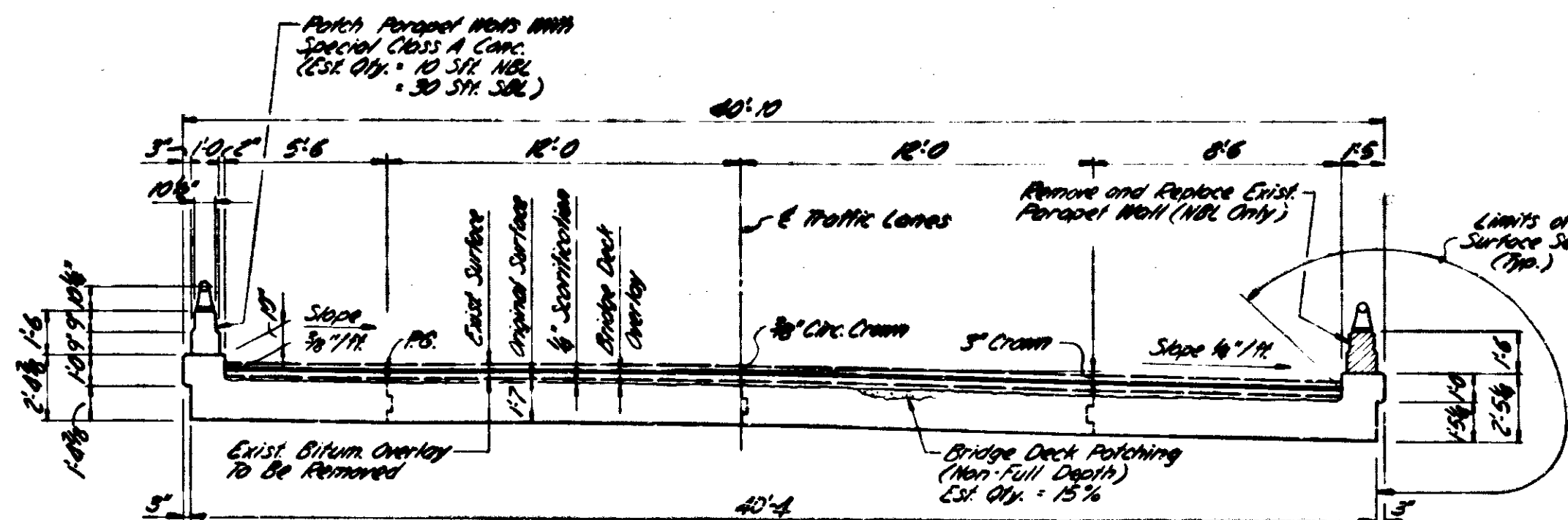


DESIGNED: CKD  
 DRAWN: JK 4-6-64 CKD MHW 4-23-64  
 TRACED: CKD

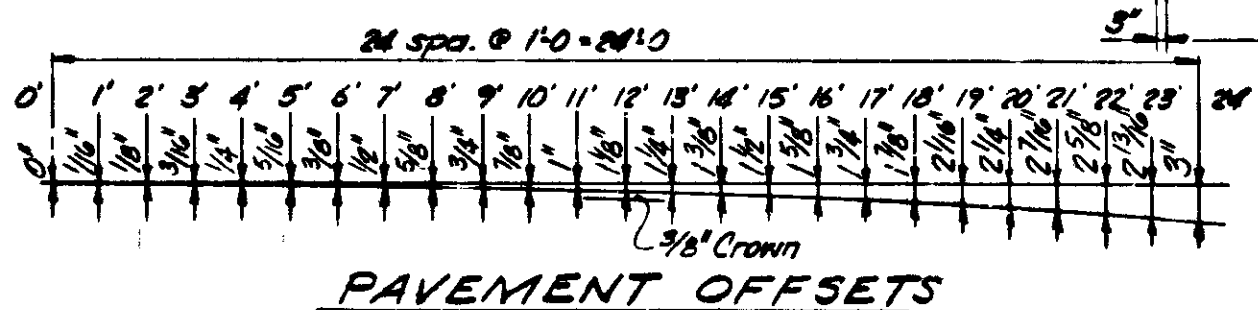
PART PLAN NORTH INTERCHANGE U.S. 24 & U.S. 31



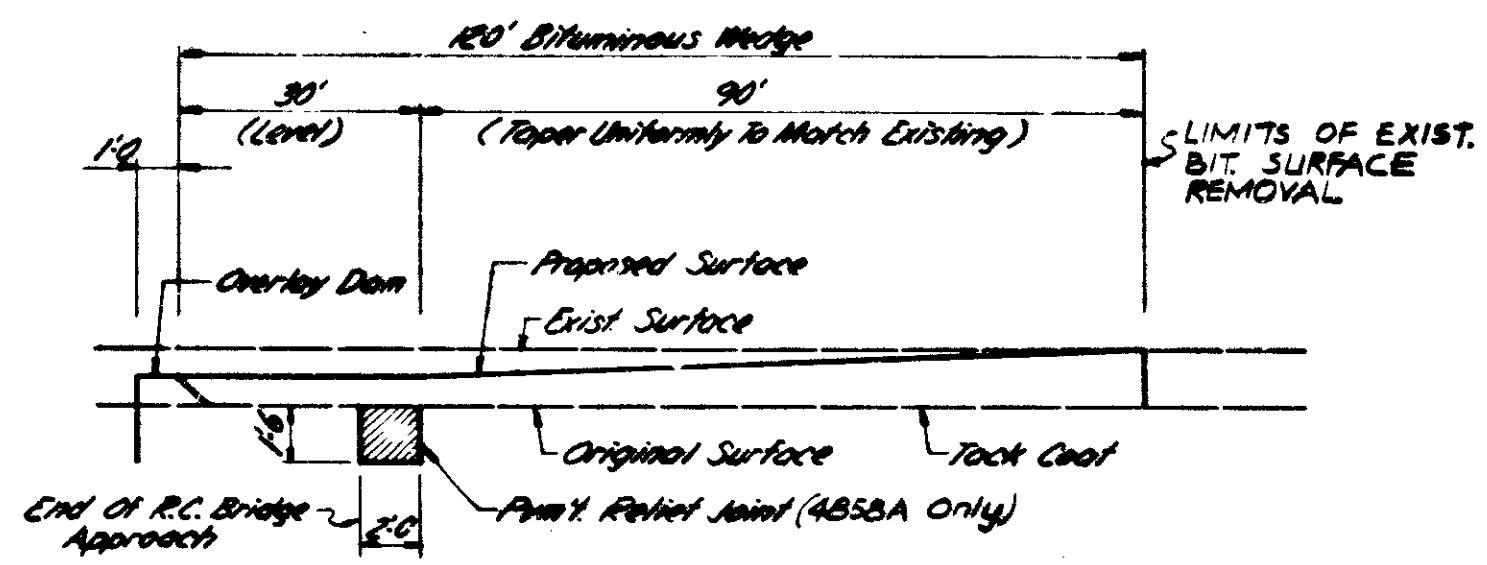
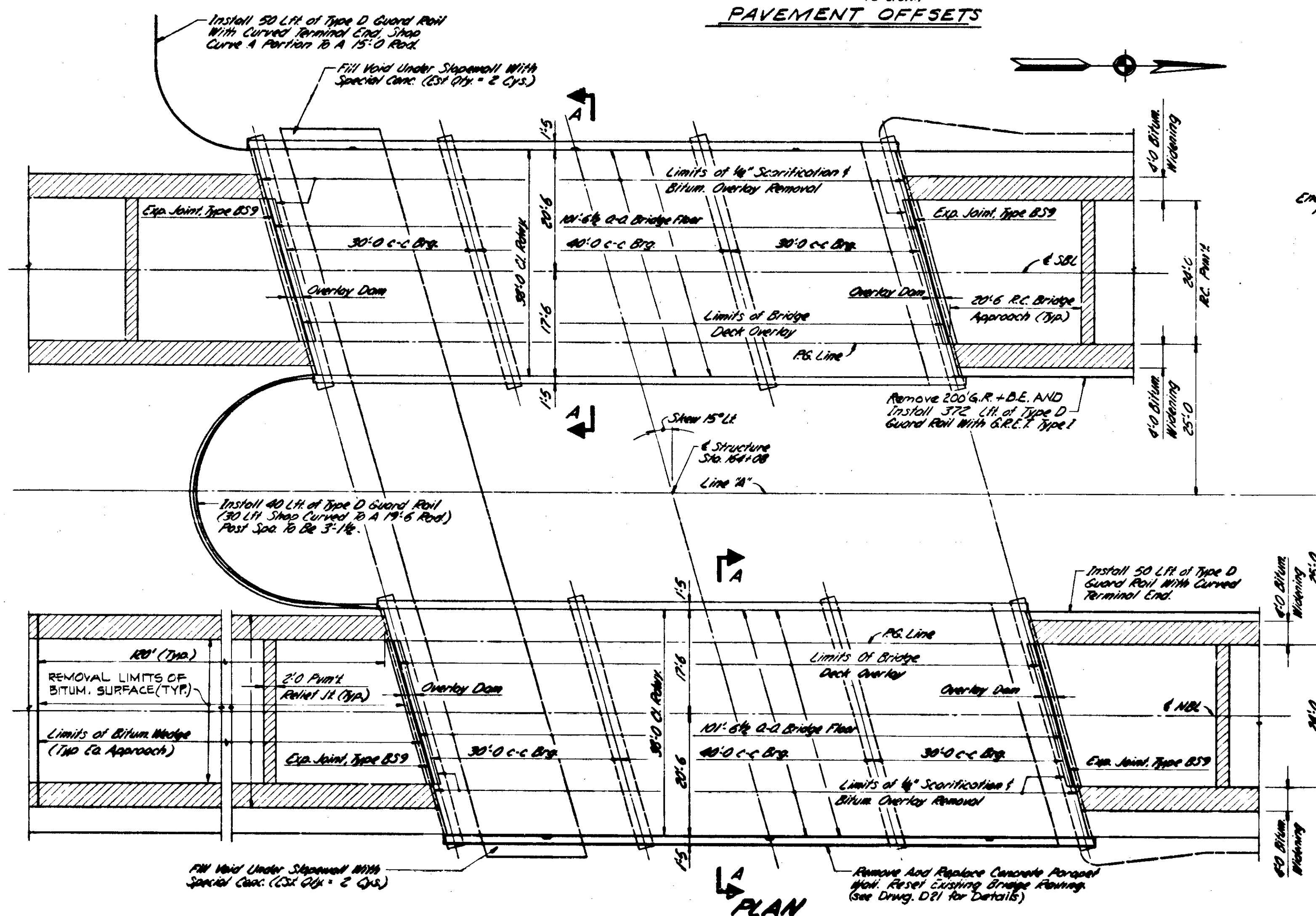
**ELEVATION**  
Scale - 1/4" = 1'-0"



**SECTION A-A**  
Scale - 1/4" = 1'-0"



**PAVEMENT OFFSETS**



**BITUMINOUS WEDGE DETAIL (STR'S. 4858A & 2986A)**  
No Scale

**NOTES:**  
For General Notes, Construction Procedures, Material Notes and Misc. Details, see Drwg. D1.

**GENERAL PLAN**  
**BRIDGE DECK RECONSTRUCTION AND OVERLAY**  
CONTINUOUSLY REINFORCED CONCRETE SLAB BRIDGES  
SPANS: 30'-0", 40'-0", 30'-0", 38'-0" CL. ROAD, SKEN 15'-0"  
TRUSS STRUCTURES U.S. 31 OVER PARALLEL DITCH  
**INDIANA DEPARTMENT OF HIGHWAYS**  
**MIAMI COUNTY**

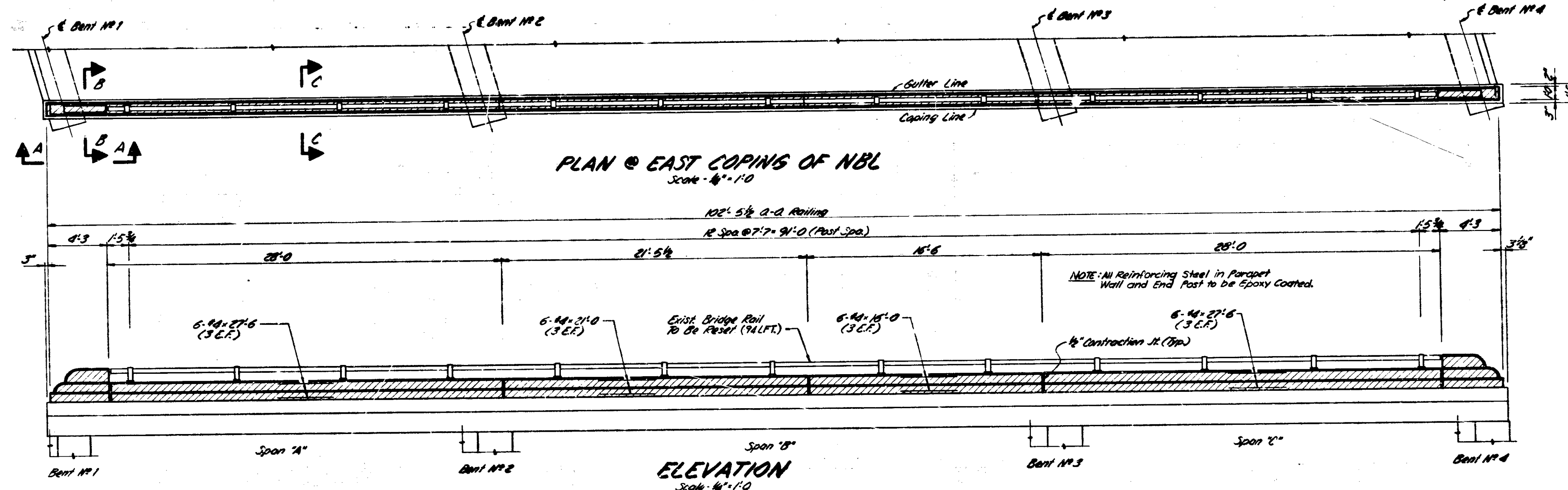
SCALE: 3/4" = 1'-0" UNLESS NOTED DATE: SEPT. 17, 1984

SUBMITTED FOR APPROVAL

DRAWING: D20 OF D21 SHEET: 24 OF 50  
PROJECT: 12-158-4(0)  
CONTRACT NO. B-1533/  
BRIDGE FILE: 31-52-4858A

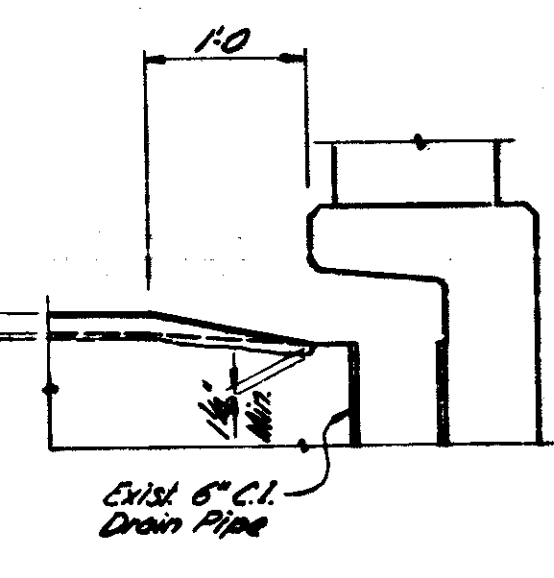
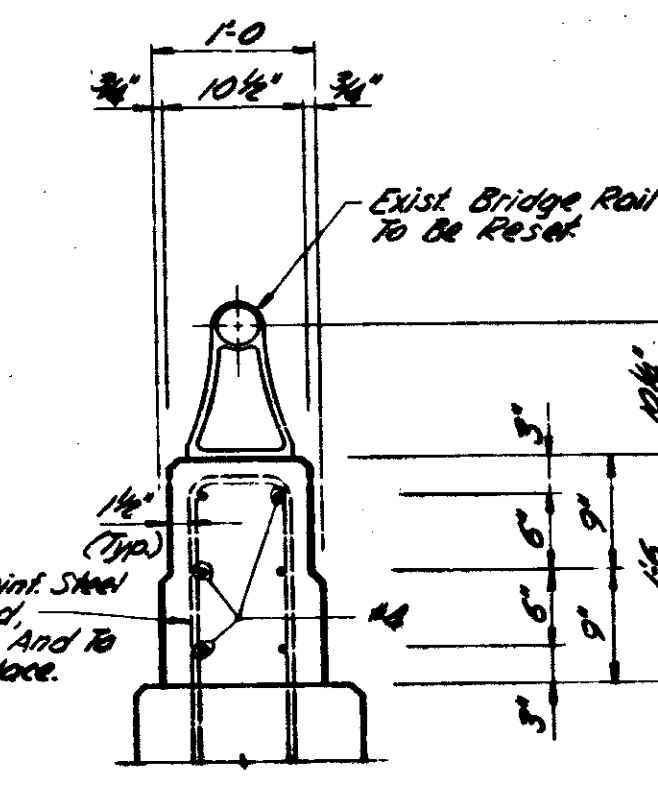
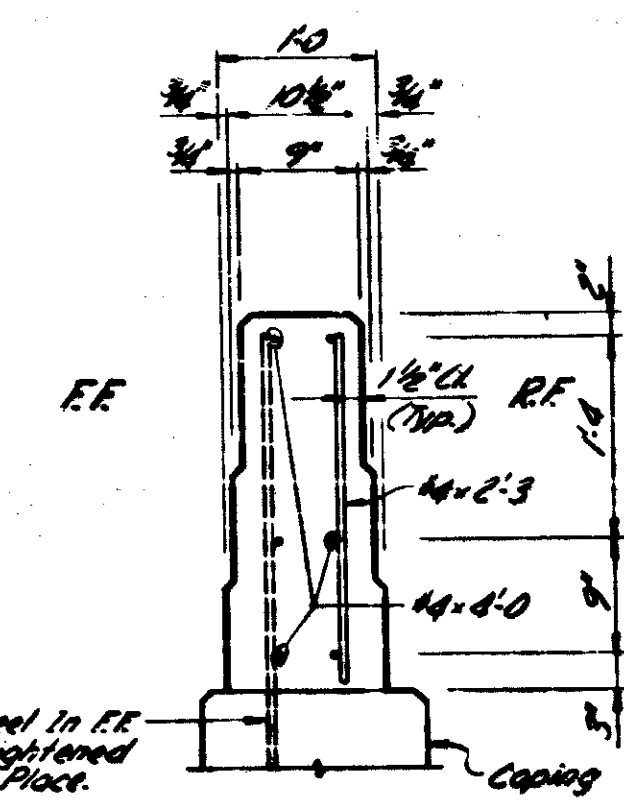
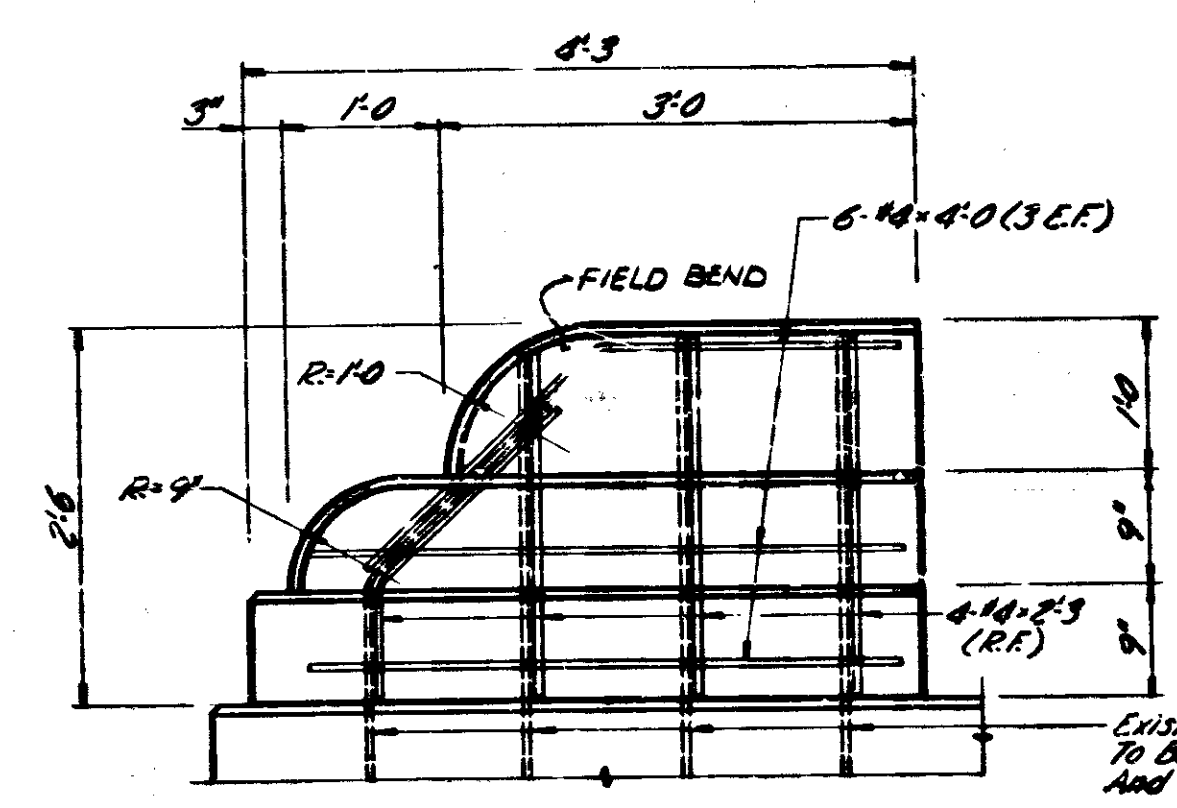


DESIGNED: CKD  
DRAWN: B.A.B. CKD  
TRACED: CKD



**BILL OF MATERIALS**

REINFORCING STEEL			
SIZE AND MARK	NO. OF BARS	LENGTH (FEET)	WEIGHT (LBS.)
EPOXY COATED REINFORCING STEEL			
#4	12	27'-6"	
#4	6	21'-0"	
#4	6	16'-0"	
#4	12	4'-0"	
#4	8	2'-3"	
TOTAL EPOXY COATED REINFC. 413			
CONCRETE			
CLASS C IN PAVING			5.5 CY3



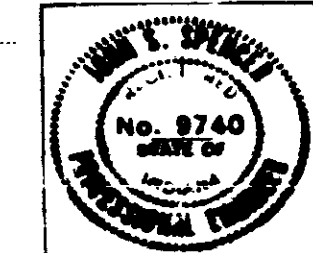
For reinforcing bar notes, see Bridge Std. C1.

**RAILING REPAIR DETAILS  
INDIANA DEPARTMENT OF HIGHWAYS**

SCALE: 1/4" = 1'-0" UNLESS NOTED DATE: SEPT. 17, 1984

SUBMITTED FOR APPROVAL *[Signature]*

DRAWING: D21 OF D21 SHEET: 25 OF 50  
PROJECT: 12-153-4(B)  
CONTRACT NO. B-15331  
BRIDGE FILE: 31-52-4958A



DESIGNED: CWD  
DRAWN: CWD  
TRACED: CWD



