

New No. 1-65-1(5)

INDEX

SHEET NO. 1	TITLE SHEET
SHEET NO. 2	STANDARD CROSS SECTIONS SHEET E-11-JR ADOPTED DECEMBER 1956
SHEET NO. 3	STANDARD CROSS SECTIONS STANDARD DIVIDED LANE SECTIONS ADOPTED JANUARY 1957
SHEET NO. 4-6	TYPICAL CROSS SECTIONS
SHEET NO. 7	STD. PAVEMENT JOINTS ADOPTED APRIL 1957 SHEET 'A'
SHEET NO. 8-17A	PLAN AND PROFILE
SHEET NO. 18-27	BRIDGE AND CULVERT DATA—ESTIMATE OF QUANTITIES
SHEET NO. 28-31	MISCELLANEOUS STANDARDS SHEET A-REV. 12-19-57, SHEET B-REV. 9-3-57, SHEET C-REV. 3-8-57
SHEET NO. 32-35	MISCELLANEOUS STANDARDS SHEET D-REV. 2-1-54, SHEET E-REV. 2-11-54, SHEET H-REV. 1-6-54
SHEET NO. 36-39	MISCELLANEOUS STANDARDS SHEET I-REV. 5-31-56, SHEET J-REV. 9-3-57, SHEET N-REV. 1-23-58
SHEET NO. 40-43	MISCELLANEOUS STANDARDS SHEET P-REV. 2-28-58, SHEET Q-REV. 4-25-58, SHEET R-REV. 4-25-58
SHEET NO. 44-47	MISCELLANEOUS STANDARDS
SHEET NO. 48-51	STD. STRUCTURE CONNECTIONS FOR EXTENSIONS
SHEET NO. 52-55	STD. REINF. CONC. BOX CULVERT, SKEWED END AND WING DETAILS, SKEW
SHEET NO. 56-59	STD. REINF. CONC. BOX CULVERT, SKEWED END AND WING DETAILS, SKEW
SHEET NO. 60-63	STD. REINF. CONC. CULV.—SLAB TOP TYPE WITHOUT FILL (10'-0" TO 20'-0" SPAN)
SHEET NO. 64-67	STD. REINF. CONC. CULV.—SLAB TOP TYPE UNDER FILL 1'-6" TO 5'-0" (10'-0" TO 20'-0" SPAN)
SHEET NO. 68-71	STD. REINF. CONC. CULV.—SLAB TOP TYPE UNDER FILL 1'-6" TO 5'-0" (10'-0" TO 20'-0" SPAN) 15 SKEW
SHEET NO. 72-75	STD. REINF. CONC. CULV.—SLAB TOP TYPE UNDER FILL 1'-6" TO 5'-0" (10'-0" TO 20'-0" SPAN) 30 SKEW
SHEET NO. 76-79	STD. REINF. CONC. CULV.—SLAB TOP TYPE UNDER FILL 1'-6" TO 5'-0" (10'-0" TO 20'-0" SPAN) 45 SKEW
SHEET NO. 80-83	STD. REINF. CONC. CULV.—SLAB TOP TYPE UNDER FILL 1'-6" TO 5'-0" (10'-0" TO 20'-0" SPAN) 45 SKEW
SHEET NO. 84-87	STD. GUARD RAIL ADOPTED JULY 1956
SHEET NO. 88	STEEL BEAM GUARD RAIL REV. 1-10-57
SHEET NO. 89	BRIDGE STANDARD M2 REV. 6-3-57
SHEET NO. 90-93	DATA FOR SUPERELEVATION AND WIDENING OF CURVES ADOPTED SEPTEMBER 1932
SHEET NO. 94-97	STD. DETOUR SIGNS SHEET I-REV. 2-11-54 SHEET 2-REV. 5-1-51
SHEET NO. 98-101	CROSS SECTIONS

STATE OF INDIANA STATE HIGHWAY DEPARTMENT

PLAN AND PROFILE OF PROPOSED STATE HIGHWAY I PROJECT NO. 03-1(5)

CODE 0210

JEFFERSONVILLE TO INDIANAPOLIS ROAD

Beginning in Grant 47 Approximately 2,986 Feet West and 103 Feet North of North-East Corner of Grant 33 and Extending in a Northerly Direction 38,167.8 Feet To a Point in Grant 167 Approximately 1,602 Feet East and 1,790 Feet North of South-West Corner of Grant 167, All in Clark County.

GROSS LENGTH: 7.228 MI.
NET LENGTH: 6.895 MI.

SCALES:
PLAN LONG: 1"=100'
TRANS: 1"=100'
PROFILE HORIZ: 1"=100'
VERT: 1"=10'

REVISIONS		
REVISION	SHEET NO.	DATE
NEW TOPO.	10, 12, 14, 16, 17, 17A, 20, 27 & 41	9-10-57.
CURVE DATA	1, 17 & 23	-2-21-58.
RIGHT OF WAY	41, 55	3-31-58
QUANTITIES	54, 65	3-31-58
Subsurface Drains	54, 6	5-19-58
TYPE A ₃ Inlet Entrance	60	" " "
Anchor Note	61	" " "

- LEGEND:
- Ⓐ BARRICADE TYPE 'A'
 - Ⓑ BARRICADE TYPE 'B'
 - Ⓒ TYPICAL SIGN STANDARDS

DESIGN DATA	
A.D.T. 1955	12,503
A.D.T. 1975	25,006
D.H.V.	3,000
DIRECTION	50%
TRUCKS	15%
DESIGN SPEED	70 MPH.
ACCESS CONTROL	FULL

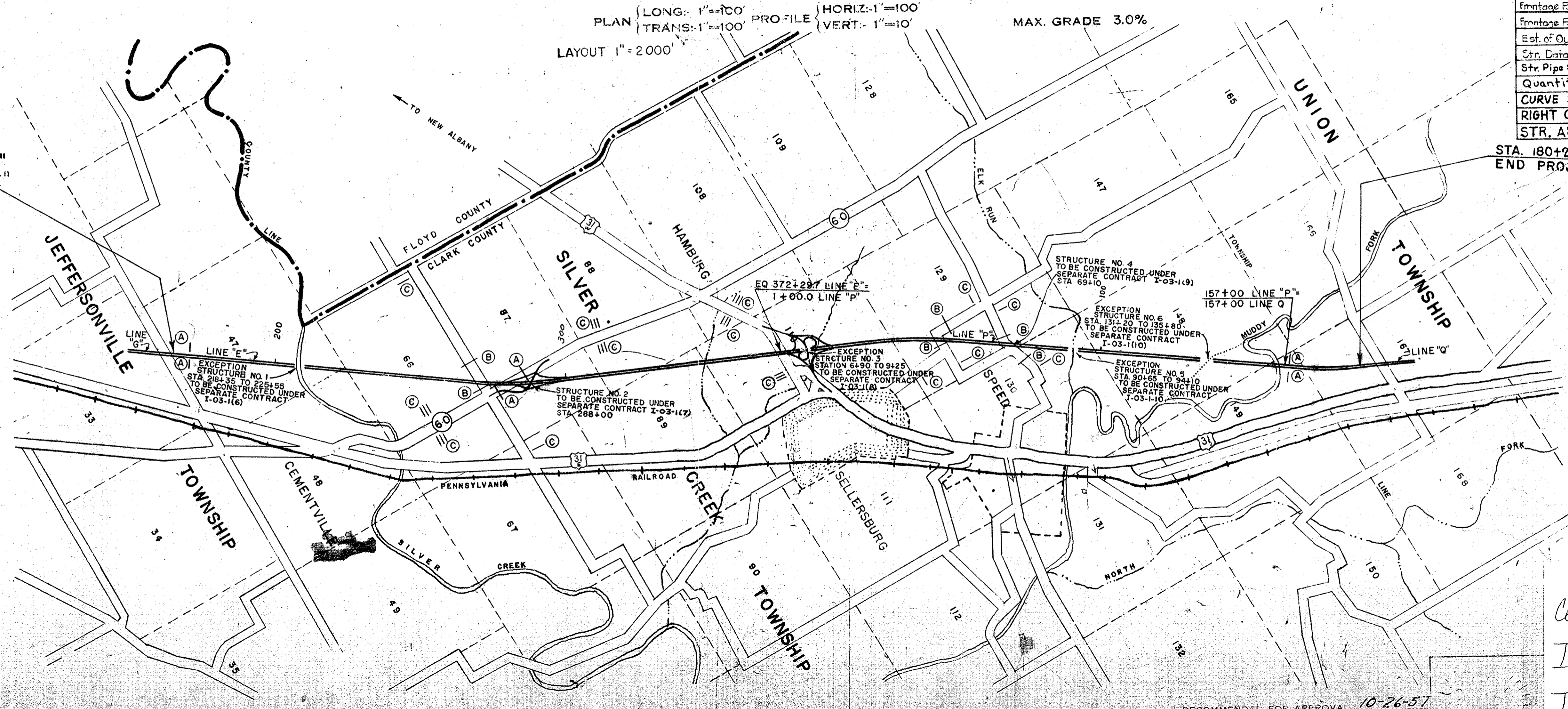
PREPARED BY: BRIGHTON ENGINEERING COMPANY
SIGNATURE: *[Signature]* TITLE: _____
DATE: 12 Aug. 1957

INDEX FOR RIGHT OF WAY PLANS		
SHEET NO.	PROJECT	DESCRIPTION
1	I PROJ. 03-1(5)	TITLE SHEET
4-5	I PROJ. 03-1(5)	TYPICAL CROSS SECTIONS
8-17A	I PROJ. 03-1(5)	PLAN & PROFILE
18-27	I PROJ. 03-1(5)	PLAN & PROFILE
30-41	I PROJ. 03-1(5)	DETAILS

R/W PLANS FOR THIS PROJECT INCLUDES R/W PLANS FOR SEPARATE CONTRACT STRUCTURES.

Quantities Sheet	65	5-19-58
Frontage Road Structures to R/W	16	5-20-58
Frontage Road R/W	17	" " "
Frontage Road R/W	41	" " "
Est. of Quantities	65	" " "
Str. Data	67	" " "
Str. Pipe Size Revised	19, 65, 68	5-23-58
Quantities Sheet	65	5-22-58
CURVE DATA	40	5-26-58
RIGHT OF WAY	27	6-2-58
STR. ADDED	16	7-1-58

EQUATION: STA. 170+28.9 LINE "G"
BEGIN PROJECT I-03-1(5)
END PROJECT I-03-1(1)

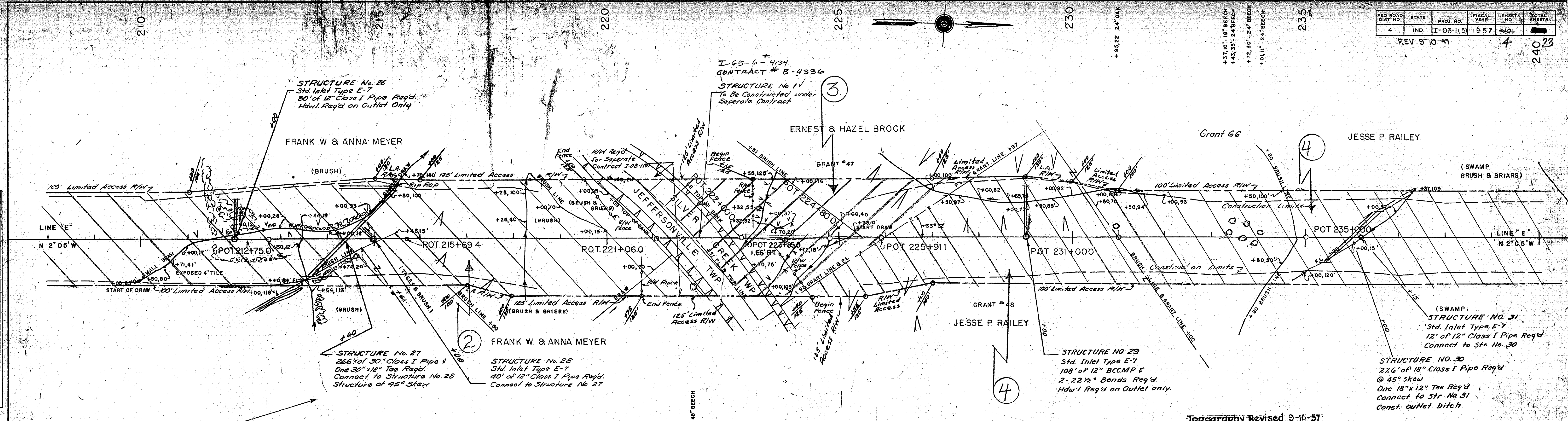


STA. 180+28.9 LINE "Q"
END PROJECT I-03-1(5)

APPROVED AND ADOPTED 11/1/57
BY STATE HIGHWAY DEPARTMENT OF INDIANA
[Signature]
APPROVED 10-29-57
[Signature]
CHIEF ENGINEER, STATE HIGHWAY DEPARTMENT OF INDIANA

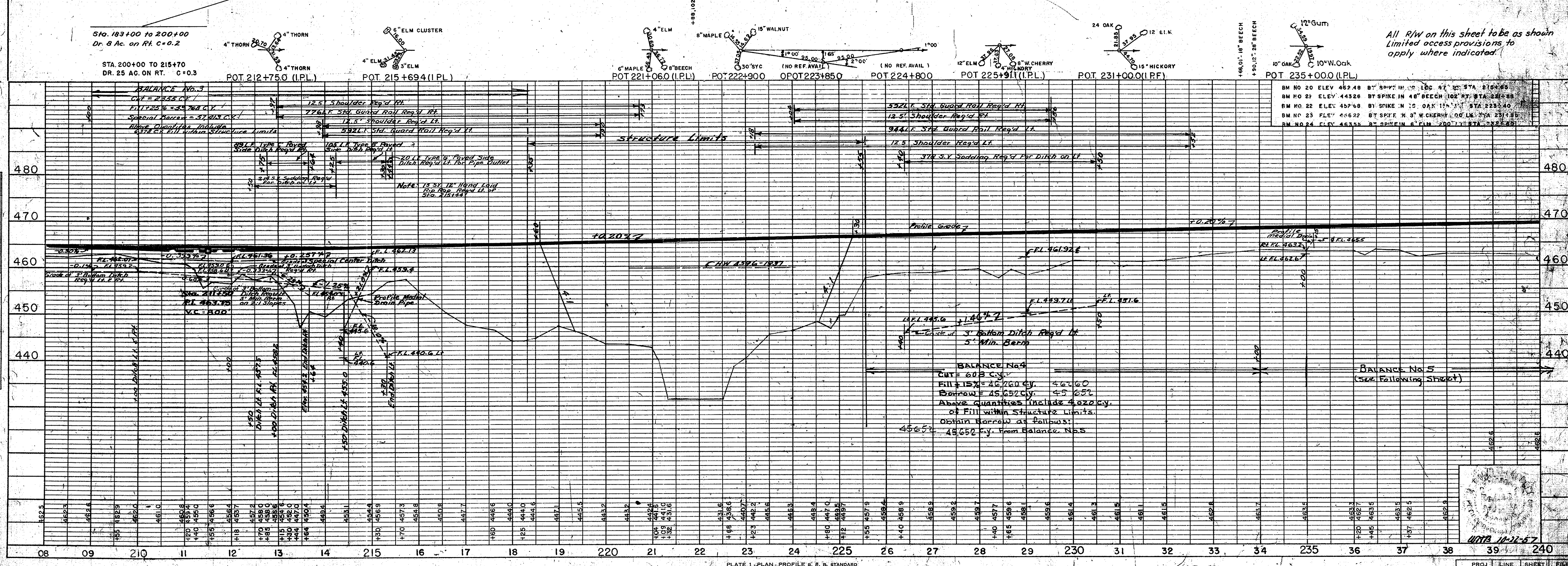
Code 0210
I-65-1(5)
I-65 Clark County
25 sheets

RECOMMENDED FOR APPROVAL 10-26-57
[Signature]



PLAN
 SURVEYED BY: []
 PHOTOGRAPHED BY: []
 NOTE BOOK NO. OF WAY CHECKED: []

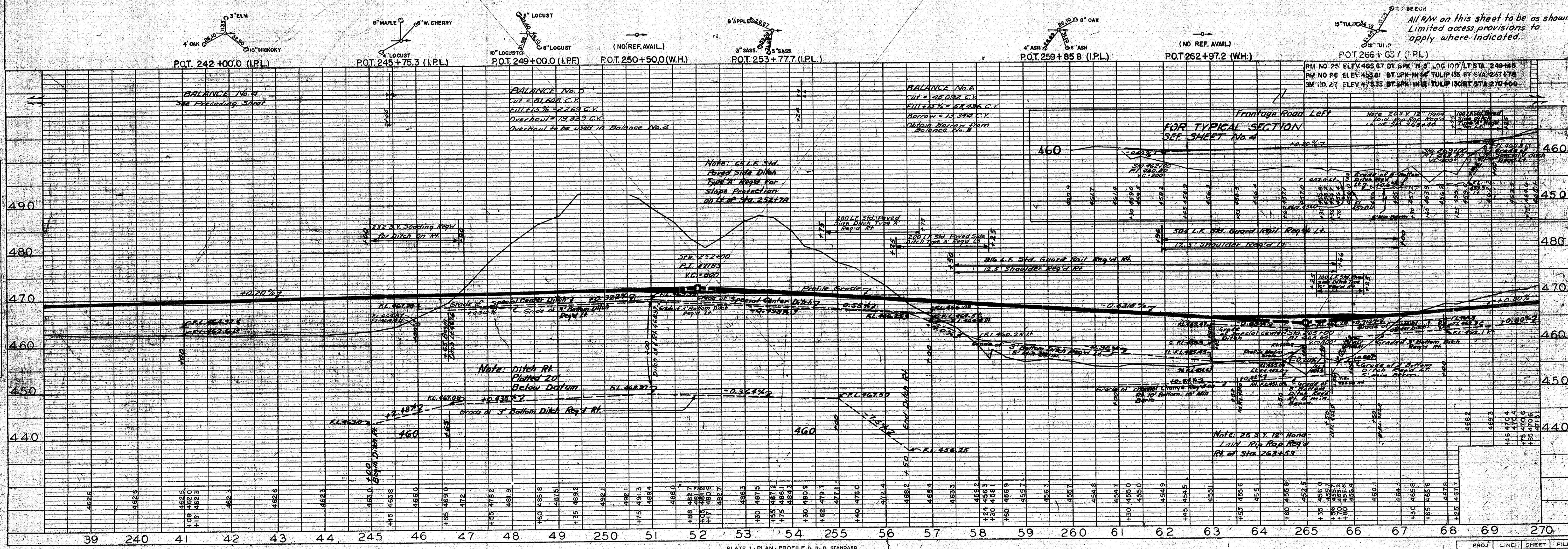
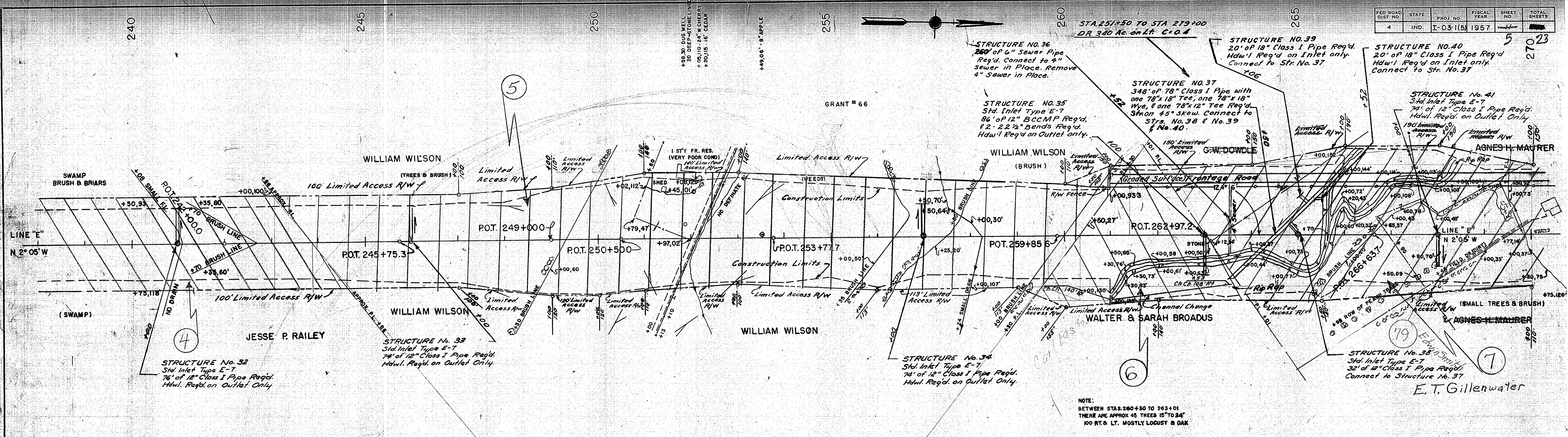
PROFILE
 SURVEYED BY: []
 NOTE BOOK NO. OF WAY CHECKED: []
 S. A. I. NOTED: []
 STRUCTURE NOTATIONS CHECKED: []



All R/W on this sheet to be as shown Limited access provisions to apply where indicated.

PLAN
 SHOWN
 NOTE BOOK ALPHABET CHECKED
 BY OF WAY CHECKED
 No.

PROFILE
 SHOWN
 NOTE BOOK ALPHABET CHECKED
 BY OF WAY CHECKED
 No.

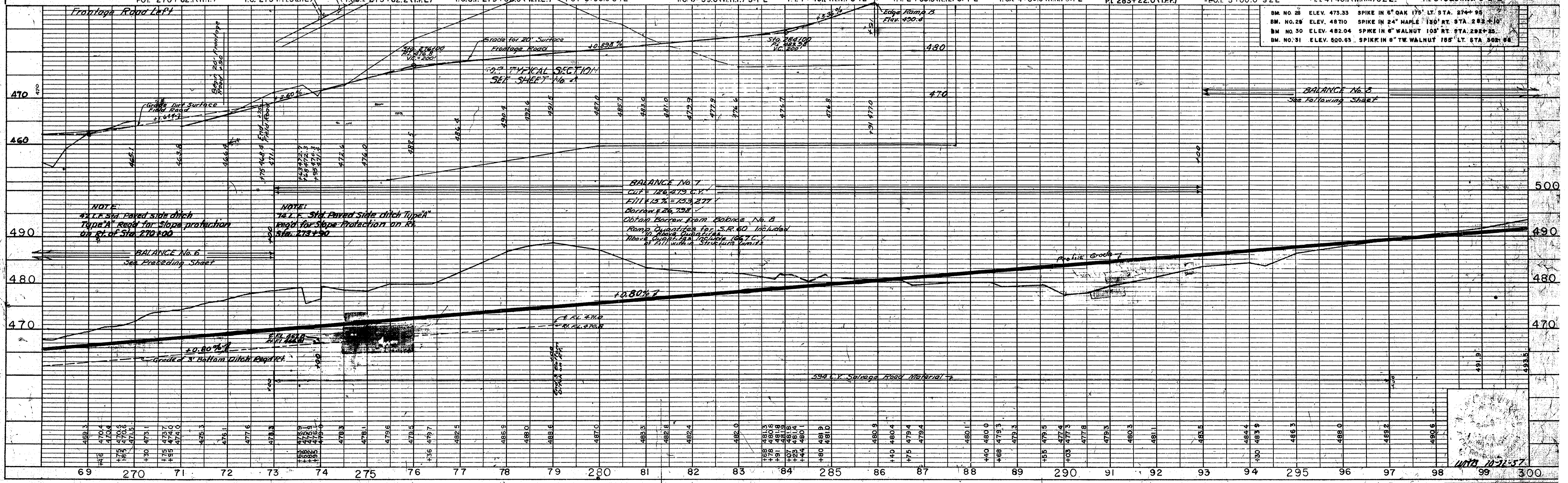
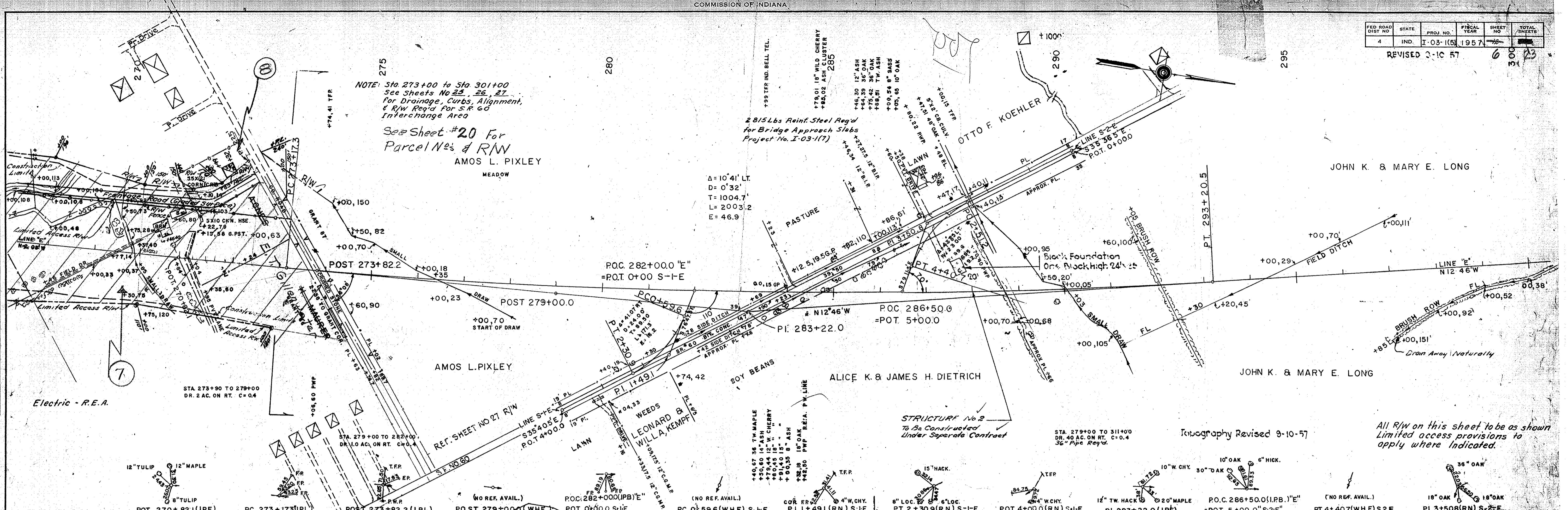


FED. ROAD DIST. NO.	STATE	PROJ. NO.	FISCAL YEAR	SHEET NO.	TOTAL SHEETS
4	IND.	I-03-115	1957	12	12

REVISED 2-10-57

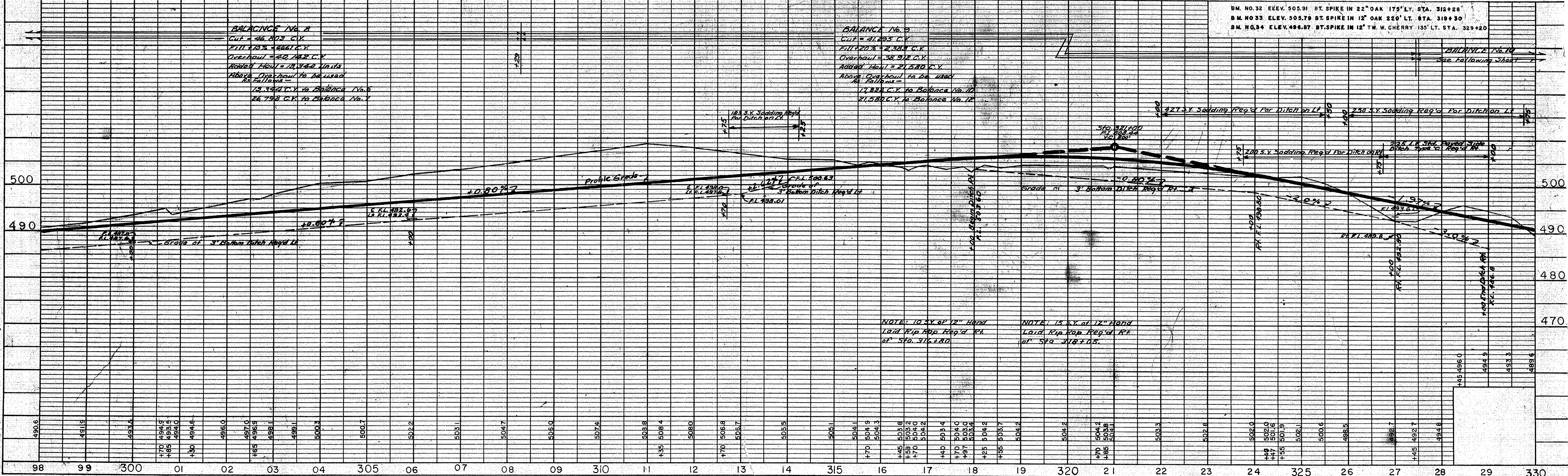
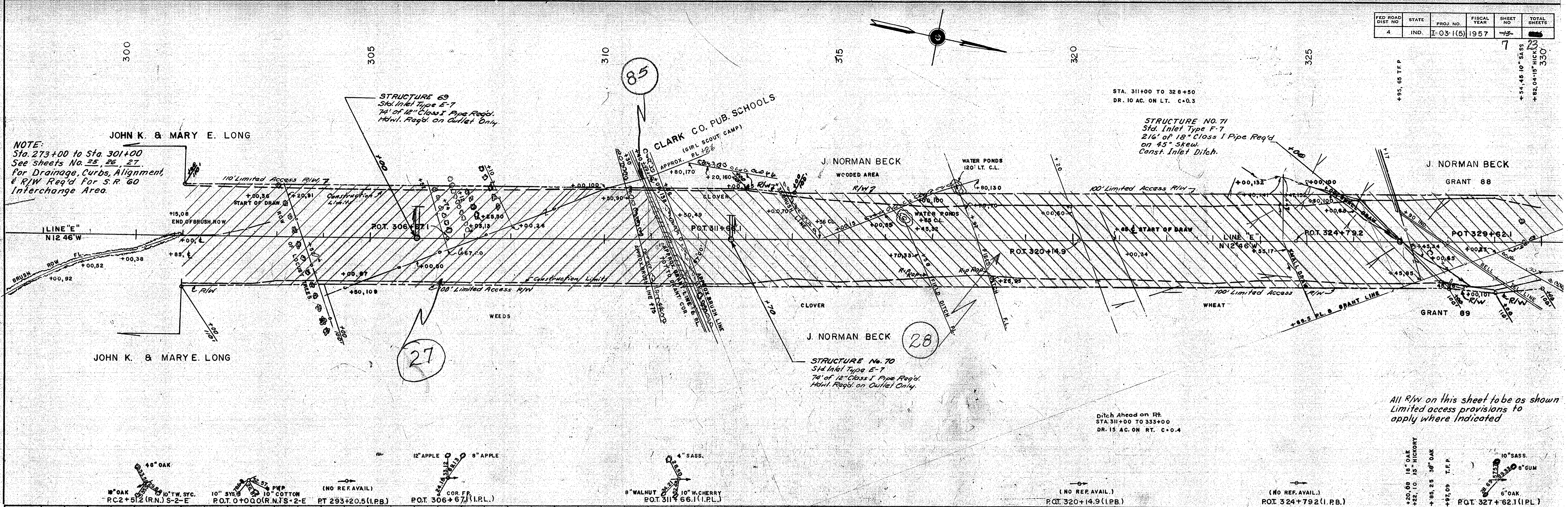
PLAN
 SURVEYED
 HORIZONTAL CHECKED
 VERTICAL CHECKED
 RT. OF WAY CHECKED
 NO. _____

PROFILE
 SURVEYED
 NOTE BOOK PAGES CHECKED
 E. & M. NOTED
 STRUCTURE NOTATIONS CHECKED
 NO. _____



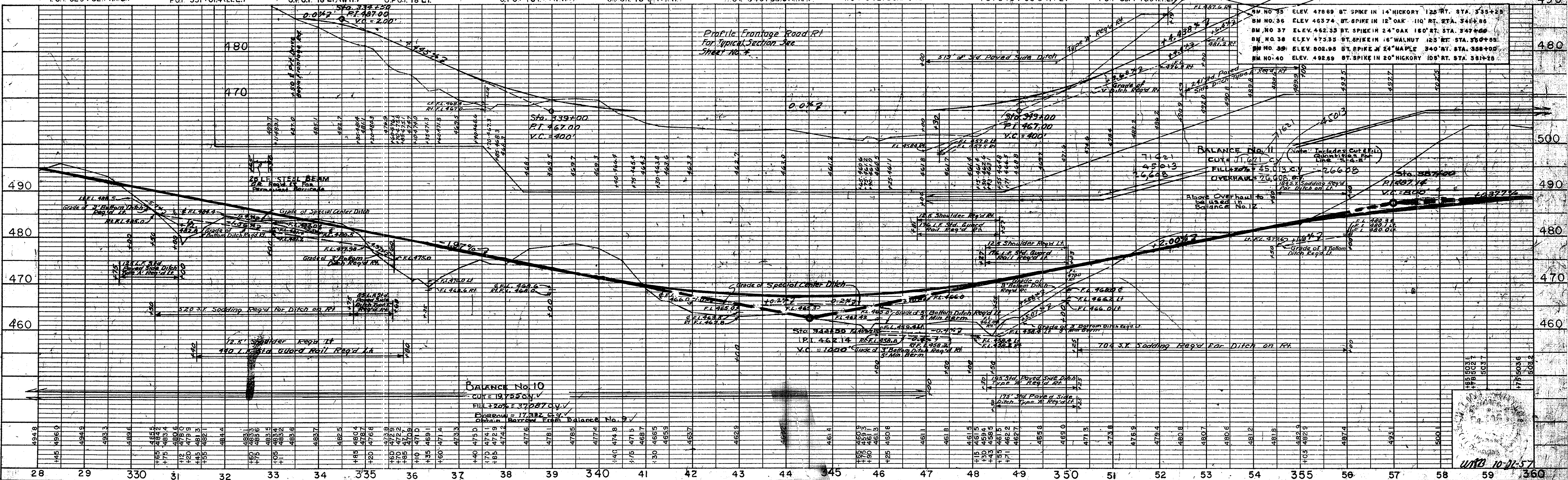
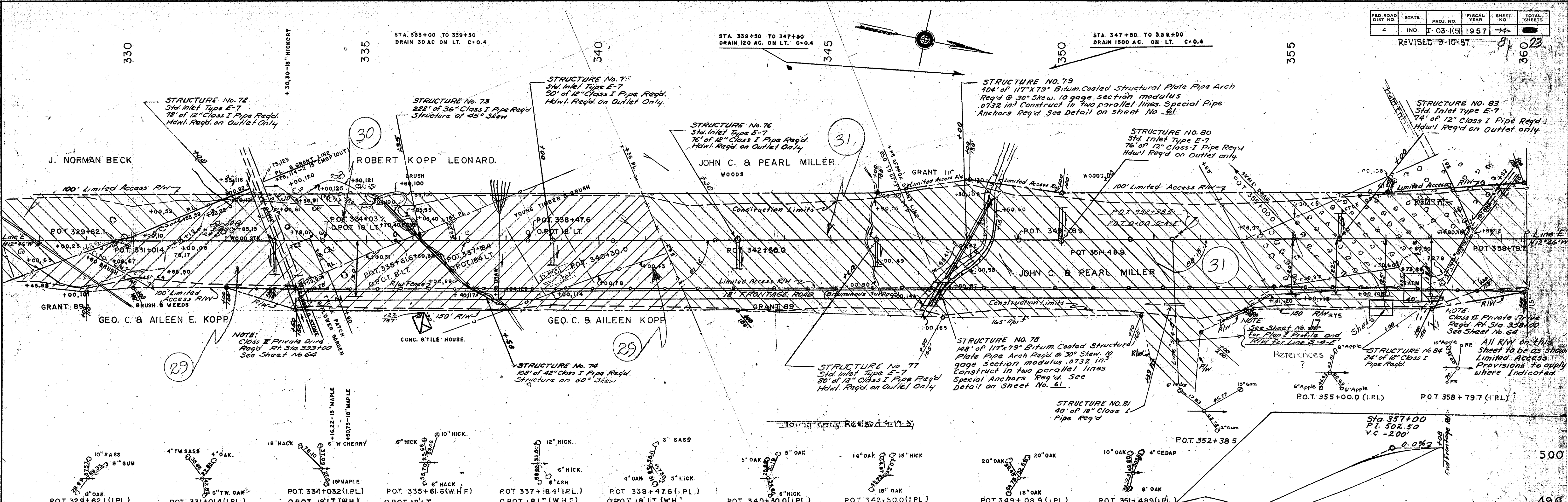
PROJ.	LINE	SHEET	FILE
I-03-115	270	12	12

FED. ROAD DIST. NO.	STATE	PROJ. NO.	FISCAL YEAR	SHEET NO.	TOTAL SHEETS
4	IND.	I-03-1(5)	1957	15	23



DATE: _____
BY: _____
SUPERVISED: _____
NOTE BOOK: _____
ALIGNMENT CHECKED: _____
RT. OF WAY CHECKED: _____
No. _____

DATE: _____
BY: _____
SUPERVISED: _____
NOTE BOOK: _____
GRADES CHECKED: _____
P. A. I. NOTED: _____
STRUCTURE NOTATIONS CHECKED: _____
No. _____



PLAN

DATE	
BY	
SURVEYED	
NOTED	
ALIGNED	
GRADES CHECKED	
BY	
DATE	
NOTE BOOK	
No.	
BY	
DATE	
BY	
DATE	

PROFILE

DATE	
BY	
SURVEYED	
NOTED	
GRADES CHECKED	
BY	
DATE	
NOTE BOOK	
No.	
BY	
DATE	
BY	
DATE	

FED. ROAD DIST. NO.	STATE	PROJ. NO.	FISCAL YEAR	SHEET NO.	TOTAL SHEETS
4	IND.	I-03-115	1957	9	23

DATE: _____ BY: _____
 SURVEYED: _____
 NOTE BOOK NO. _____
 GRADES CHECKED: _____
 B. M.'S. NOTED: _____
 STRUCTURE NOTATIONS CHECKED: _____

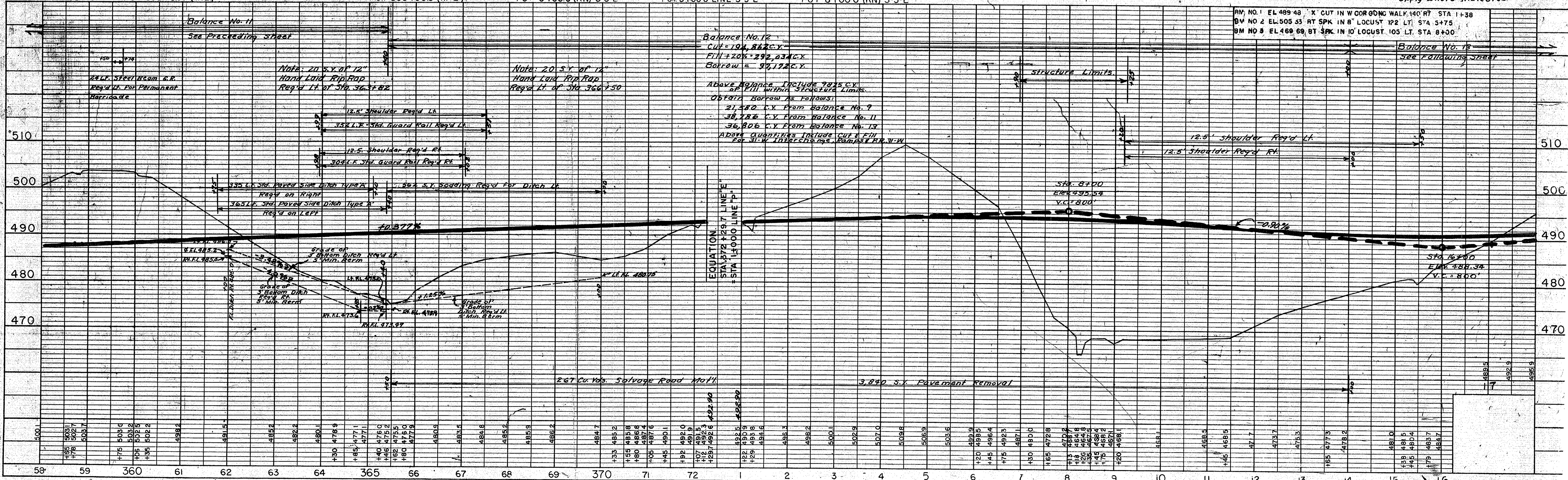
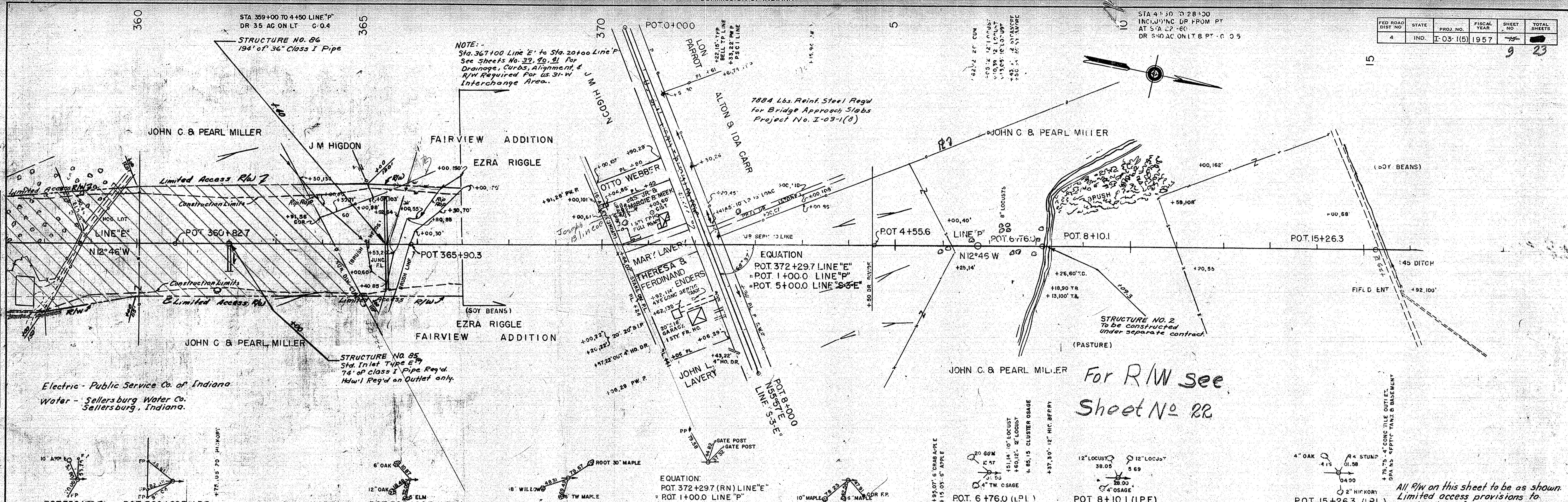


PLATE 1 - PLAN - PROFILE B. R. R. STANDARD
 INDIANAPOLIS BLUE PRINT AND LITHOGRAPH COMPANY

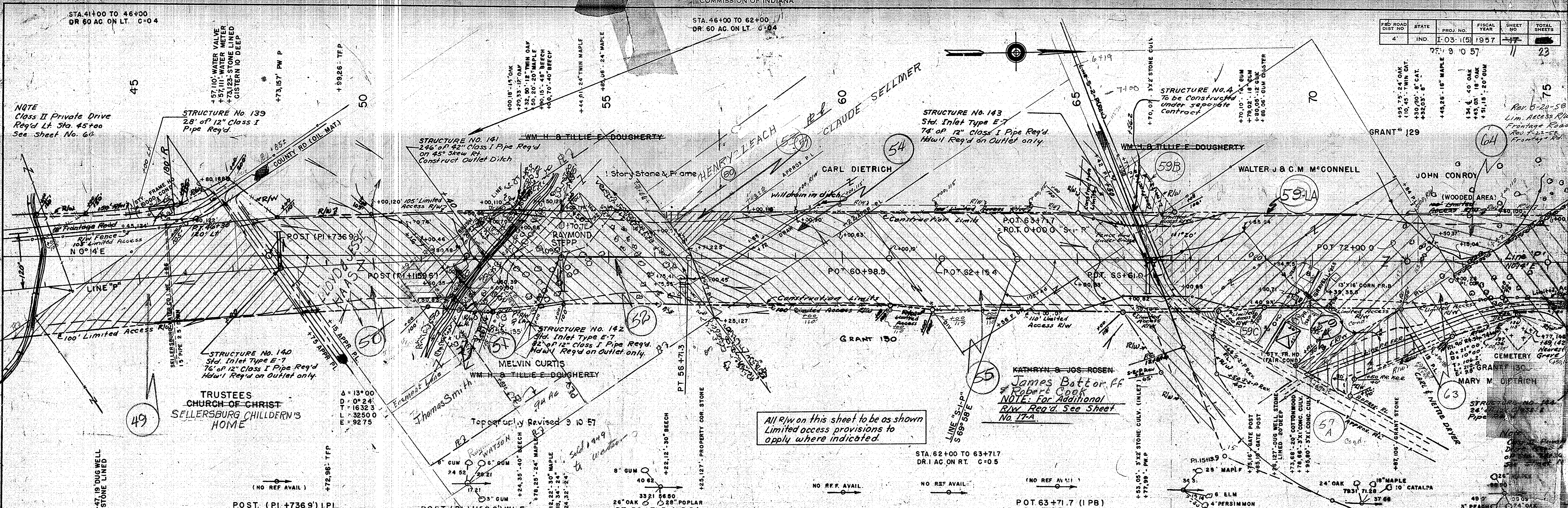
STA. 41+00 TO 46+00
DR. 60 AC. ON LT. C-04

STA. 46+00 TO 62+00
DR. 60 AC. ON LT. C-04

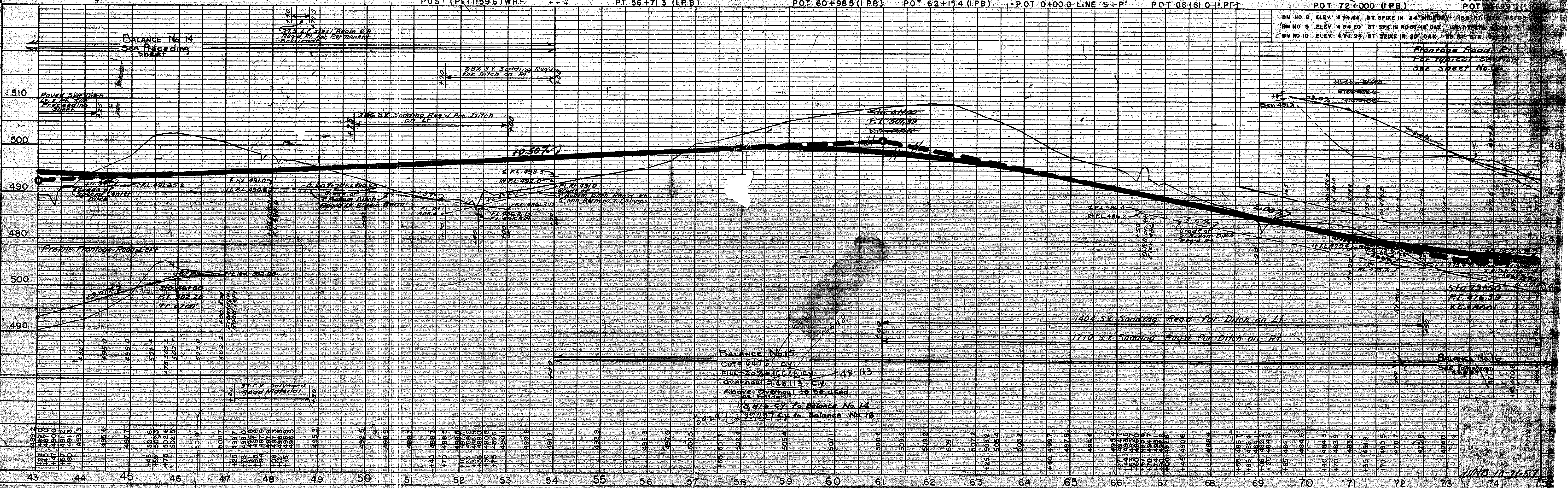
PROJ. NO.	FISCAL YEAR	SHEET NO.	TOTAL SHEETS
1-03-15	1957	11	23

PLAN	BY	DATE
PLAN	BY	DATE

PROFILE	BY	DATE
PROFILE	BY	DATE



All R/W on this sheet to be as shown
Limited access provisions to
apply where indicated.



STRUCTURE N°1 @ STA 5+00
 Lin. Ft. 12" Class I Pipe
 2-Hd Wlls. Regd. (1.71 CY Cl. D Conc.)

STRUCTURE N°2
 Lin. Ft. 12" Cl. I Pipe, 2-Pvt
 Ent. Hd Wlls. Regd. (0.58 CY Cl. D Conc.)
 Const. Class II Pvt Drive
 CY Special Borrow
 Tons Comp. Agg. Base
 Tons Hot Asph. Conc. Binder

STRUCTURE N°3, 5, 12, 14
 Std. Inlet Type D-6
 22" 12" Class I Pipe

STRUCTURE N°4
 Std. Inlet Type D-6
 12" Class I Pipe

STRUCTURE N°6
 Std. Inlet Type D-6
 12" Class I Pipe

STRUCTURE N°7 @ STA 9+46
 of 6" Perforated C.M. Pipe
 of 6" C.M. Pipe 1-Hd Wlls. Regd.
 (22 CY Cl. D Conc.)

STRUCTURE N°8 @ STA 9+88
 of 18" Cl. I Pipe, 2-Hd Wlls. Regd.
 (29 CY Cl. D Conc.)

STRUCTURE N°9 @ STA 11+44
 of 18" Cl. I Pipe, 2-Hd Wlls. Regd.
 (29 CY Cl. D Conc.)

STRUCTURE N°10 @ STA 11+84
 of 6" Perforated C.M. Pipe, of 6" C.M. Pipe
 1-Hd Wlls. Regd. (0.2 CY Cl. D Conc.)

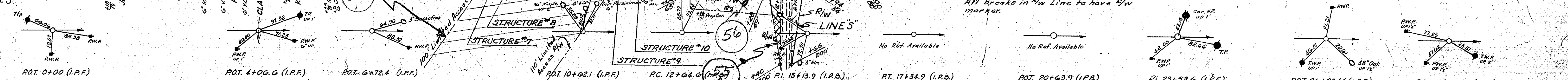
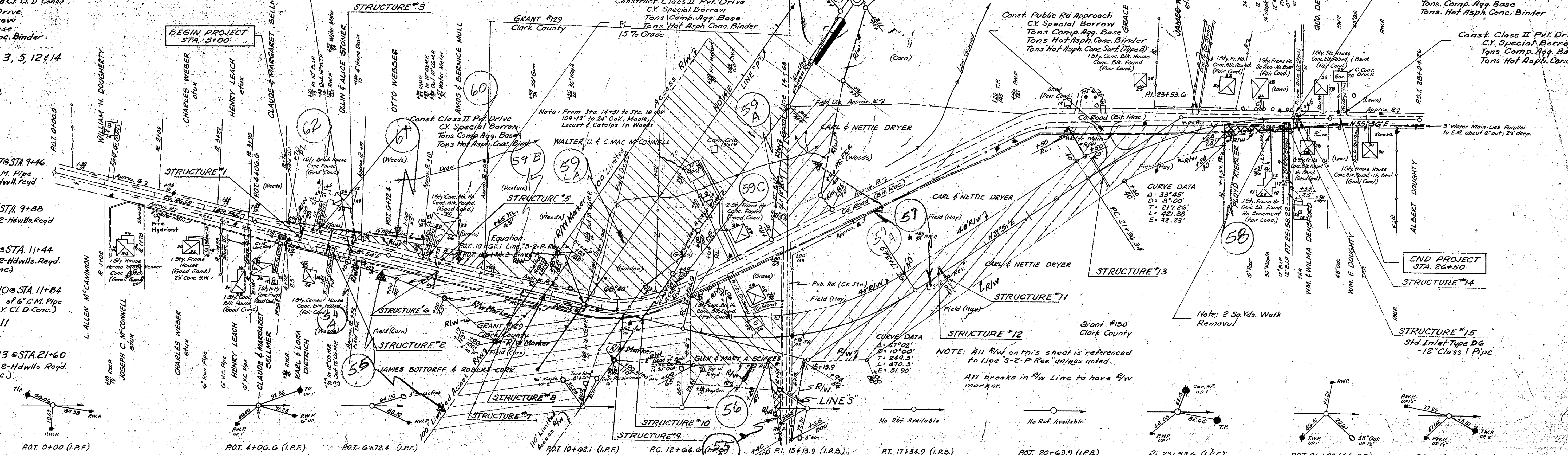
STRUCTURE N°11
 Std. Inlet Type D-6
 12" Class I Pipe

STRUCTURE N°13 @ STA 21+60
 15" Class I Pipe, 2-Hd Wlls. Regd.
 (1.71 CY Class D Conc.)

LINE S-2-P-Rev.

NOTE:
 This sheet for R/W
 Purposes Only.

FEDERAL ROAD REGION NO.	STATE	PROJECT NO.	FISCAL YEAR	SHEET NO.	TOTAL SHEETS
4	IND.	103-110-1-05-115	1958	12	23

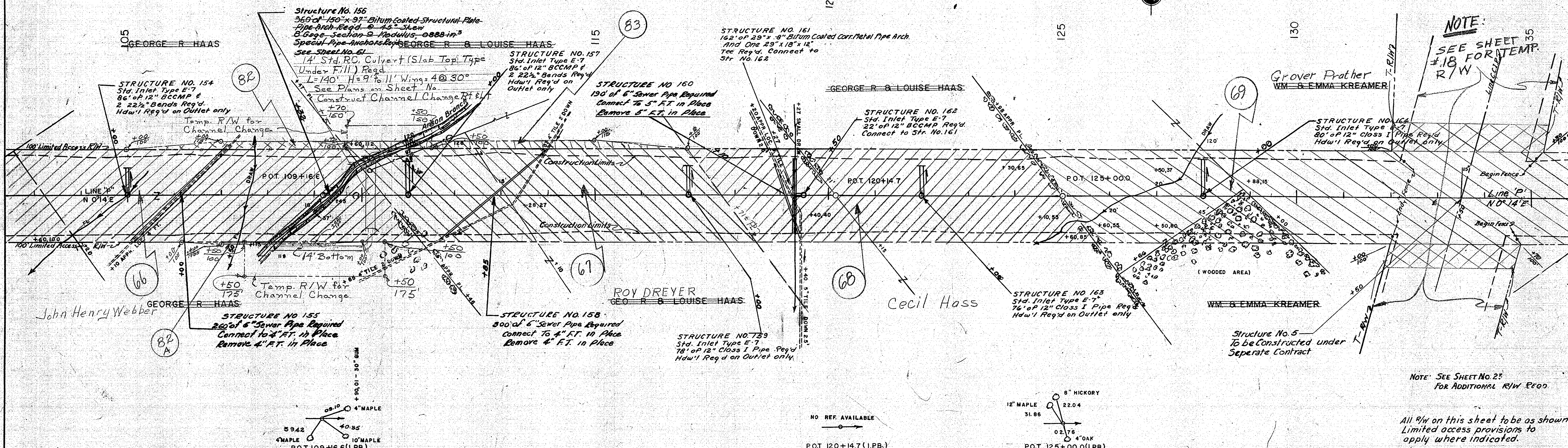


Tons Hot Asph. Conc. Surface (20' Wide)
 Tons Hot Asph. Conc. Binder
 CY Comp. Agg. Base
 Tons Bituminous Primer
 CY Special Borrow

Anson Branch 1050 Acres on Lt. C+0.45

DATE: BY: DIVISION: PROJECT: SHEET NO. 14 OF 23

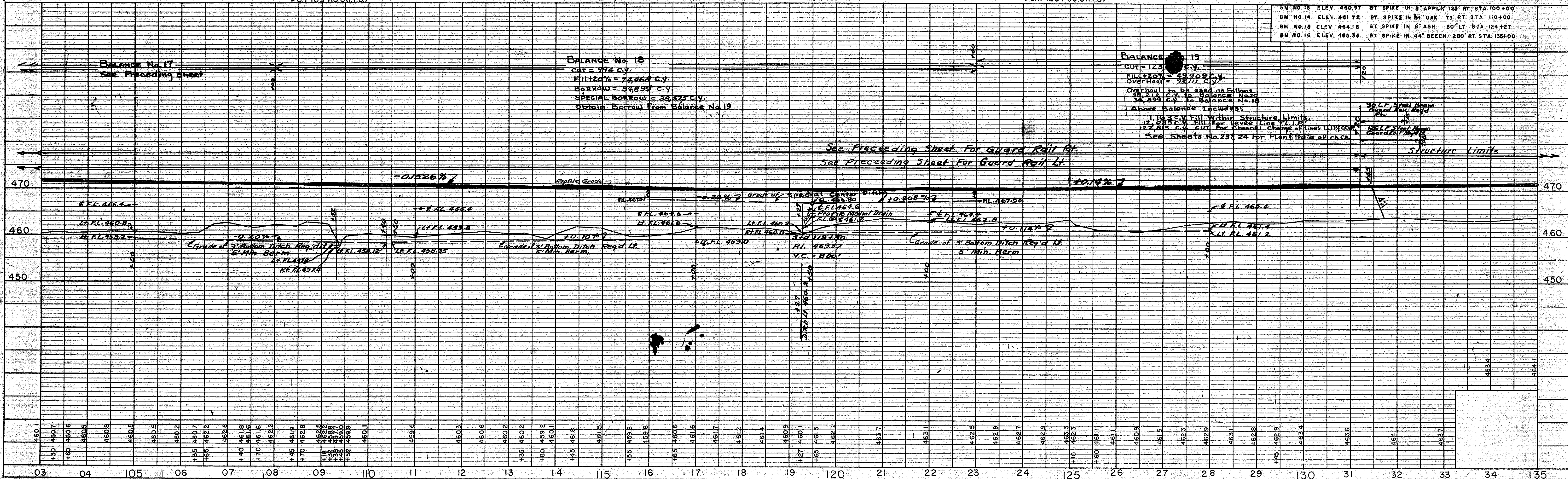
DATE: BY: DIVISION: PROJECT: SHEET NO. 14 OF 23



NOTE: SEE SHEET #18 FOR TEMP. R/W

NOTE: SEE SHEET NO. 23 FOR ADDITIONAL R/W REQ.

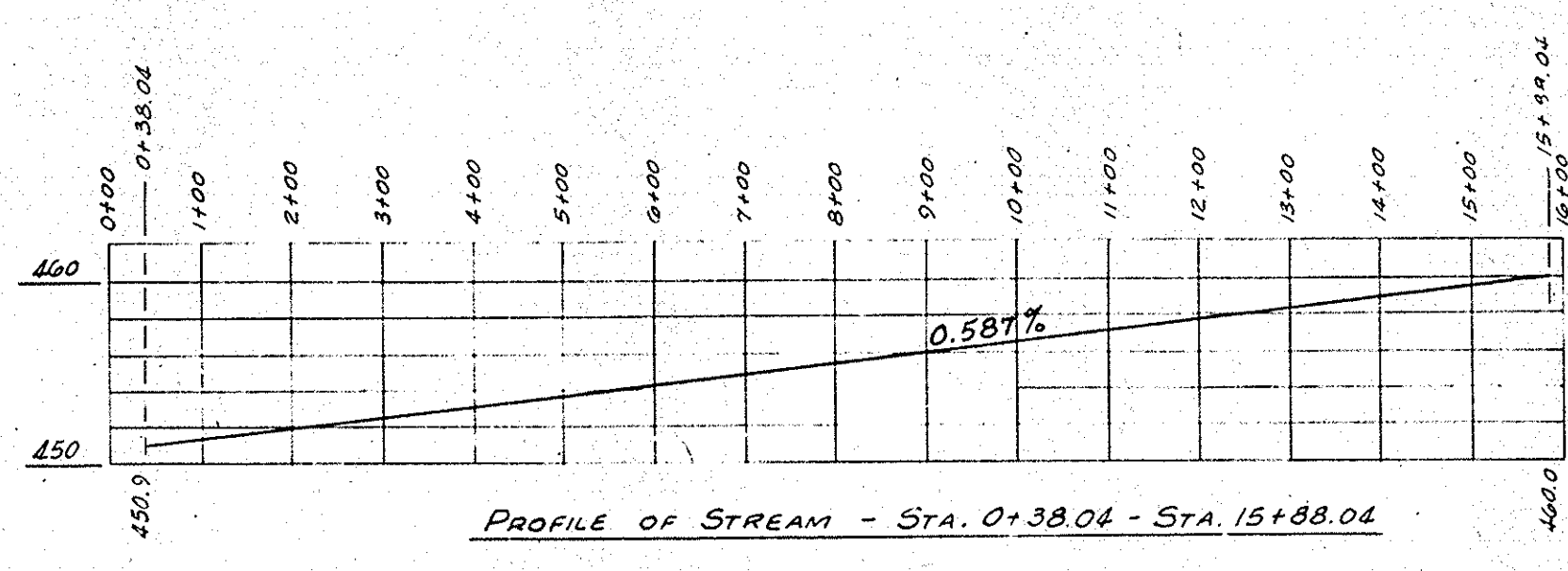
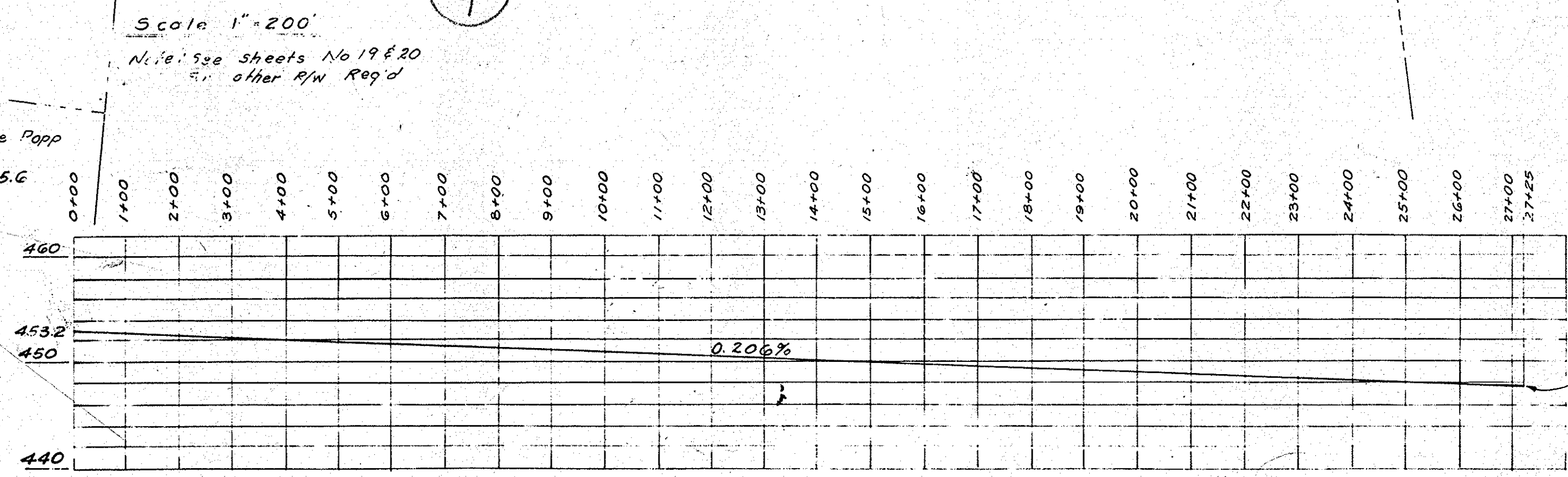
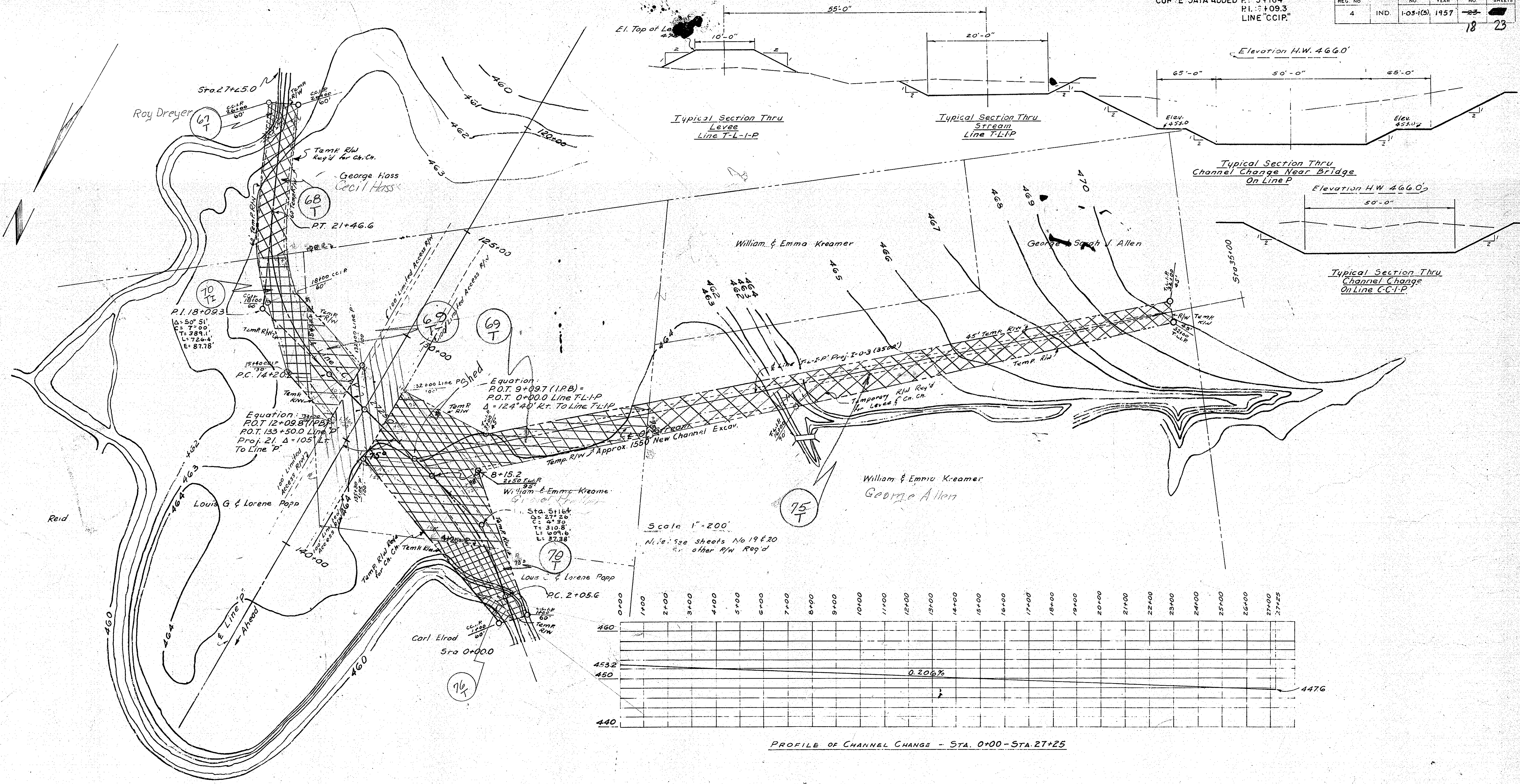
All R/W on this sheet to be as shown Limited access provisions to apply where indicated.



BALANCE No. 18
CUT = 974 C.Y.
FILL = 74,860 C.Y.
BORROW = 34,899 C.Y.
SPECIAL BORROW = 38,523 C.Y.
Obtain Borrow from Balance No. 19

BALANCE No. 19
CUT = 123 C.Y.
FILL = 23,809 C.Y.
OVERHAUL = 23,117 C.Y.
Overhaul to be used as follows:
38,523 C.Y. to Balance No. 20
34,899 C.Y. to Balance No. 18
Above balance includes:
11,035 C.Y. Fill within Structure Limits.
12,083 C.Y. Fill for Level Line P.L.P.
12,843 C.Y. Cut for Channel Change of Lines L.R.E.S.S.
See sheets No. 23 & 24 for Plan & Rank of ch. ch.

PUB. ROAD REG. NO.	STATE	PROJECT NO.	FISCAL YEAR	SHEET NO.	TOTAL SHEETS
4	IND.	1-05-105	1957	18	23



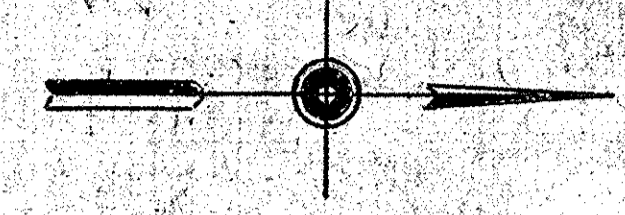
LAYOUT
 CHANNEL CHANGE & LEVEE
 MUDDY FORK CREEK
STATE HIGHWAY DEPARTMENT OF INDIANA

SCALE: AS NOTED
 SUBMITTED FOR APPROVAL: JUNE 20, 1957

STA. 133+50

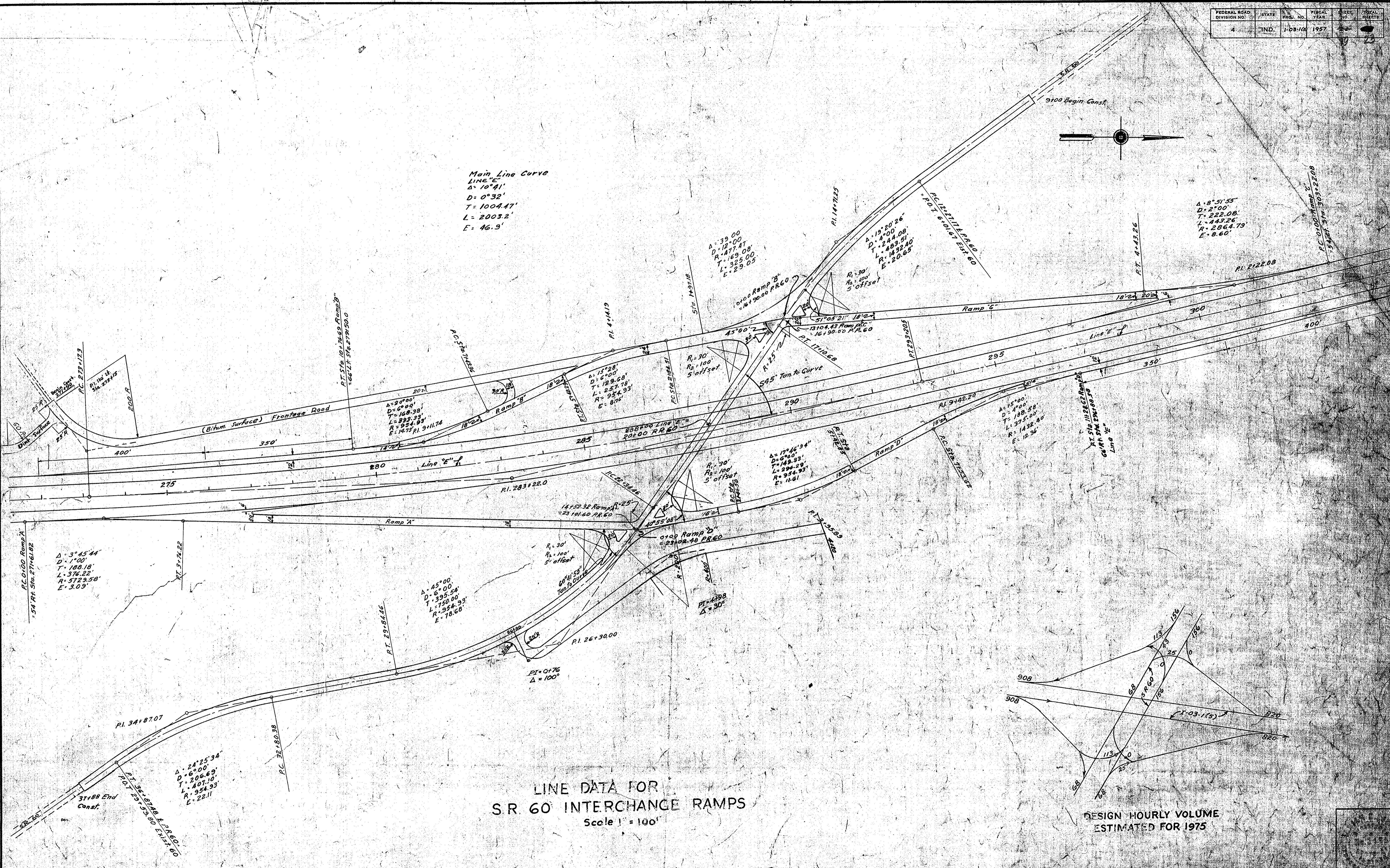
DESIGNED	C.K.D.
DRAWN	C.K.D.
CHECKED	C.K.D.

10-26-57



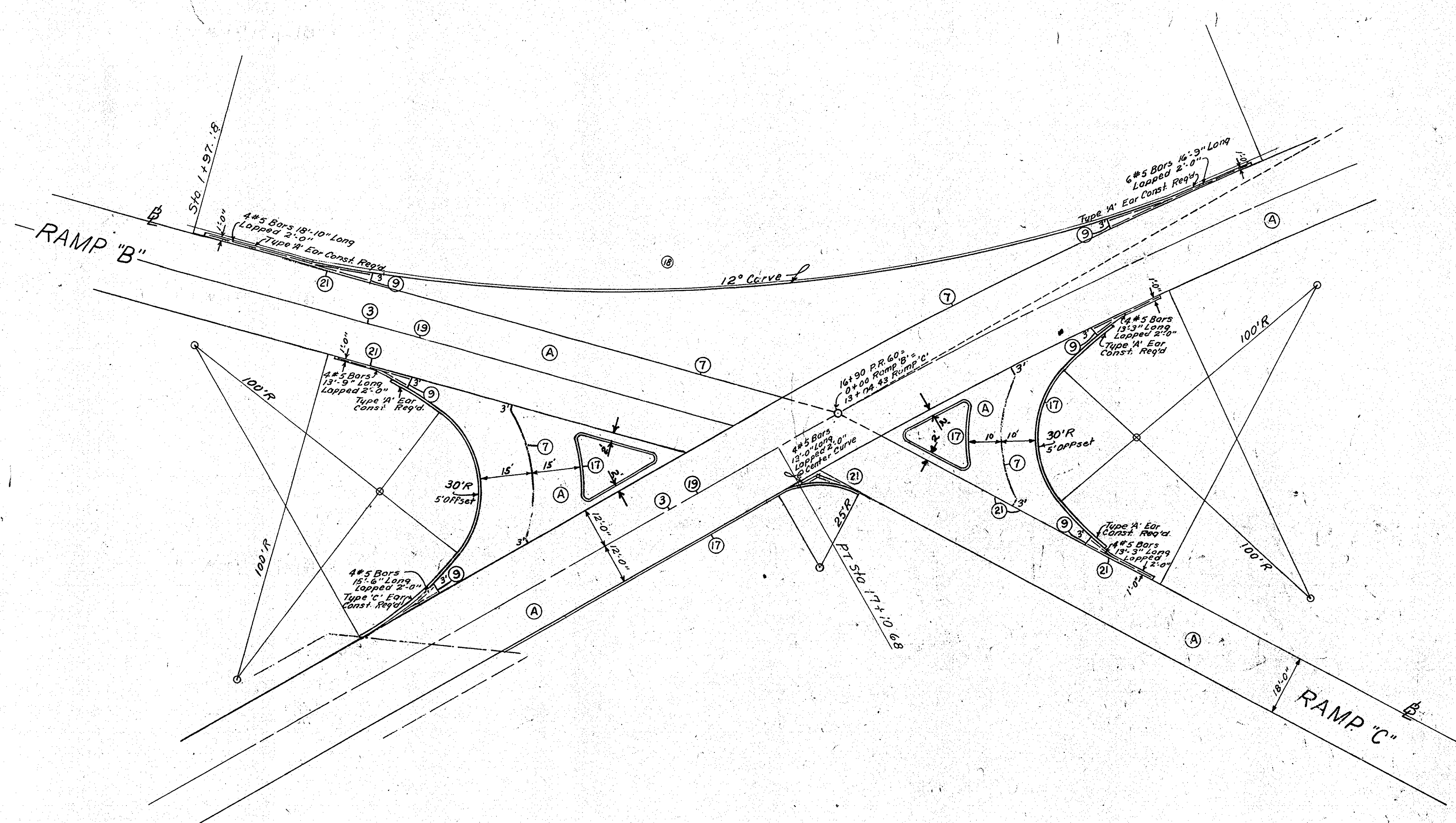
Main Line Curve
 LINE "E"
 $\Delta = 10^{\circ}41'$
 $D = 0^{\circ}32'$
 $T = 1004.47'$
 $L = 2003.2'$
 $E = 46.9'$

$\Delta = 8^{\circ}51'55''$
 $D = 2^{\circ}00'$
 $T = 222.08'$
 $L = 443.26'$
 $R = 2864.79'$
 $E = 8.60'$



LINE DATA FOR
 S.R. 60 INTERCHANGE RAMPS
 Scale 1" = 100'

DESIGN HOURLY VOLUME
 ESTIMATED FOR 1975



INTERSECTION RAMPS "B" & "C"
WITH STATE ROUTE 60

SCALE 1"=20'

LEGEND

- (A) Reinforced Concrete Pavement
- (3) Longitudinal Joint
- (7) Keyway Joint
- (9) 1" Preformed Expansion Joint
- (17) Integral Concrete Curb Type 'B'
- (19) 6" Traffic Lane Stripe
- (21) Keyway Construction Joint
- (18) Std. Lip Gutter

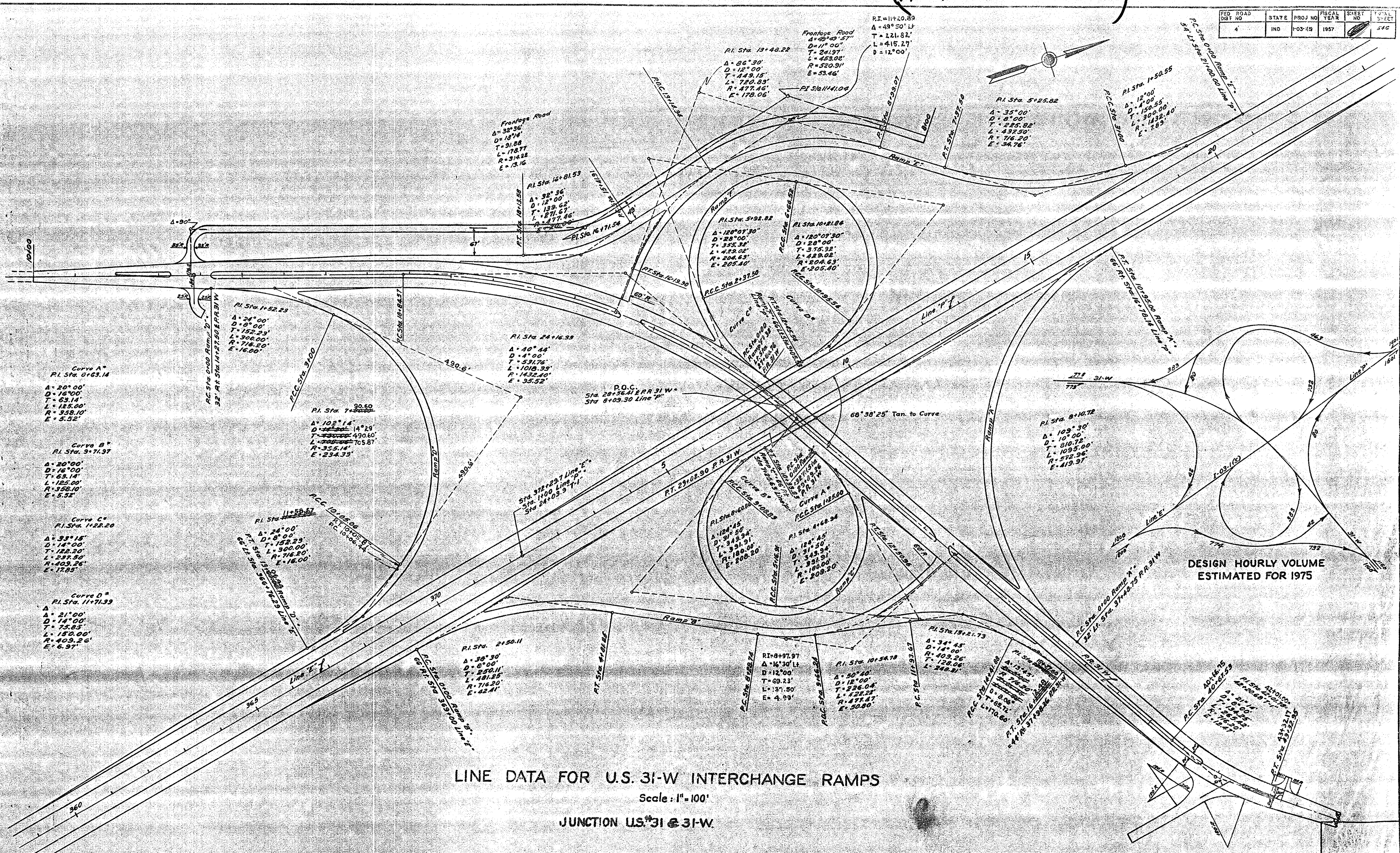
DETAILS



THIS SHEET FROM CONSTRUCTION PLAN
(R/W Plans have no Line Data)

Revised 5-26-53
CURVE DATA.

FED. ROAD DIST. NO.	STATE	PROJ. NO.	FISCAL YEAR	SHEET NO.	TOTAL SHEETS
4	IND.	1-03-19	1957	54C	54C



Curve A*
P.I. Sta. 0+63.14
A = 20° 00'
D = 16° 00'
T = 63.14'
L = 185.00'
R = 358.10'
E = 5.52'

Curve B*
P.I. Sta. 3+71.97
A = 20° 00'
D = 16° 00'
T = 63.14'
L = 185.00'
R = 358.10'
E = 5.52'

Curve C*
P.I. Sta. 1+22.20
A = 39° 15'
D = 14° 00'
T = 122.20'
L = 257.30'
R = 403.26'
E = 17.85'

Curve D*
P.I. Sta. 11+71.93
A = 21° 00'
D = 14° 00'
T = 73.85'
L = 152.00'
R = 403.26'
E = 6.97'

LINE DATA FOR U.S. 31-W INTERCHANGE RAMP

Scale: 1" = 100'

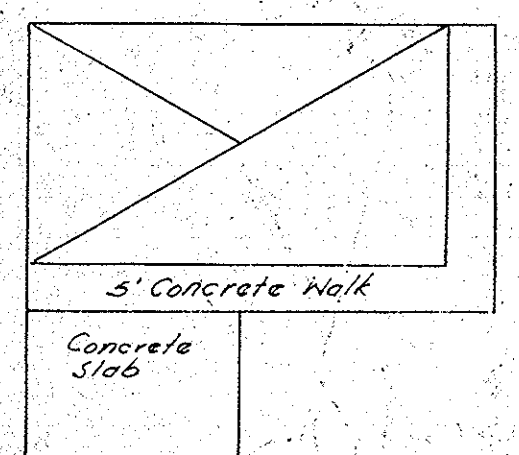
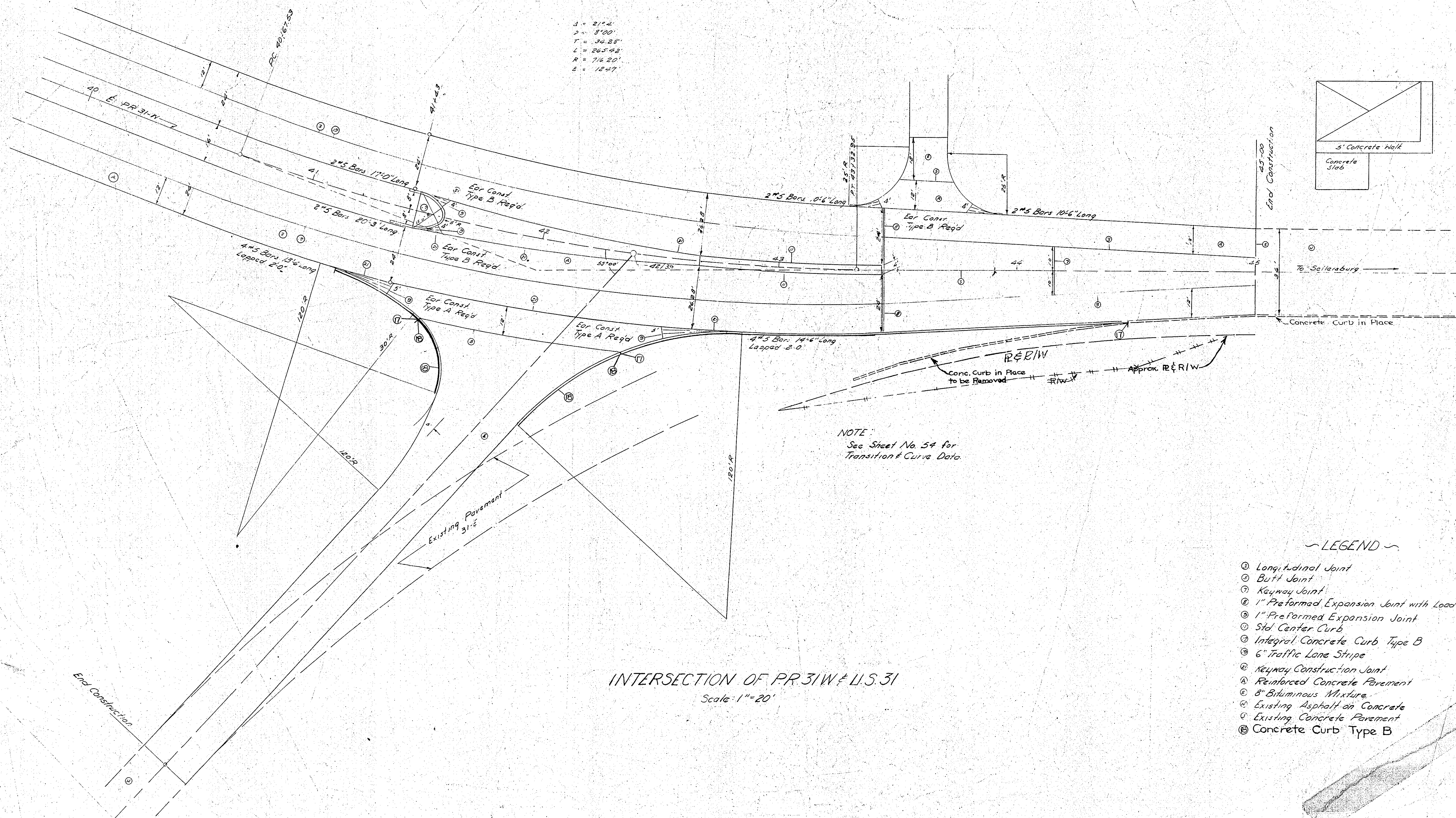
JUNCTION U.S. 31 @ 31-W

DESIGN HOURLY VOLUME
ESTIMATED FOR 1975

FEDERAL ROAD DISTRICT NO.	STATE	PROJ. NO.	FISCAL YEAR	SHEET NO.	TOTAL SHEETS
4	IND.	103-(5)	1957	23	23

March 31, 1958
 R/W Placed on Detail
 Sta 43+00 to 45+00
 R/W Revised

$\Delta = 21.4'$
 $D = 8'00''$
 $T = 34.25'$
 $L = 265.93'$
 $R = 716.20'$
 $E = 12.47'$



NOTE:
 See Sheet No. 54 for
 Transition & Curve Data.

INTERSECTION OF PR 31-W & U.S. 31
 Scale: 1" = 20'

- ~ LEGEND ~
- ① Longitudinal Joint
 - ② Butt Joint
 - ③ Keyway Joint
 - ④ 1" Preformed Expansion Joint with Load Transfer
 - ⑤ 1" Preformed Expansion Joint
 - ⑥ Std. Center Curb
 - ⑦ Integral Concrete Curb Type B
 - ⑧ 6" Traffic Lane Stripe
 - ⑨ Keyway Construction Joint
 - ⑩ Reinforced Concrete Pavement
 - ⑪ 8" Bituminous Mixture
 - ⊙ Existing Asphalt on Concrete
 - ⊙ Existing Concrete Pavement
 - ⊙ Concrete Curb Type B

10-16-57