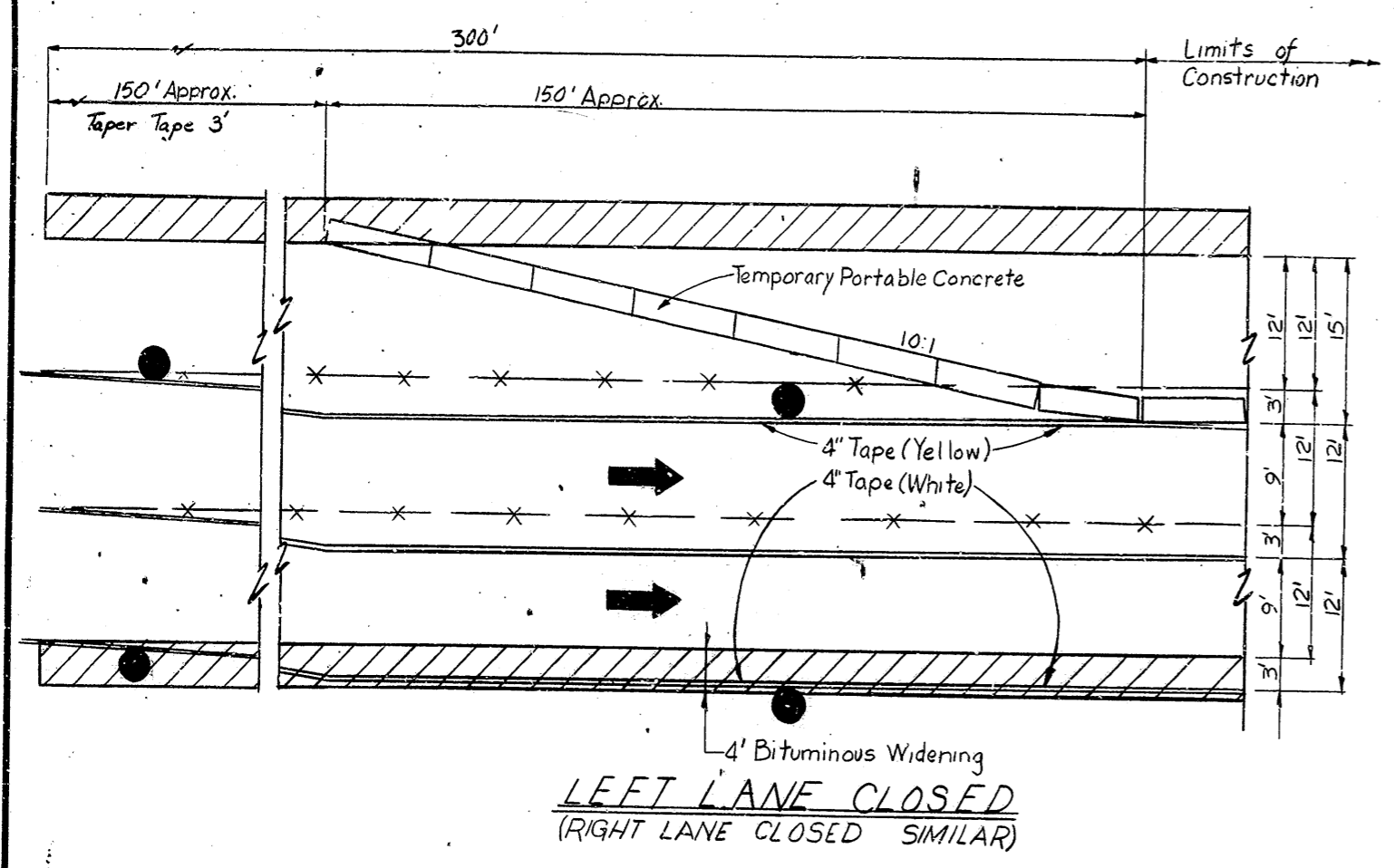
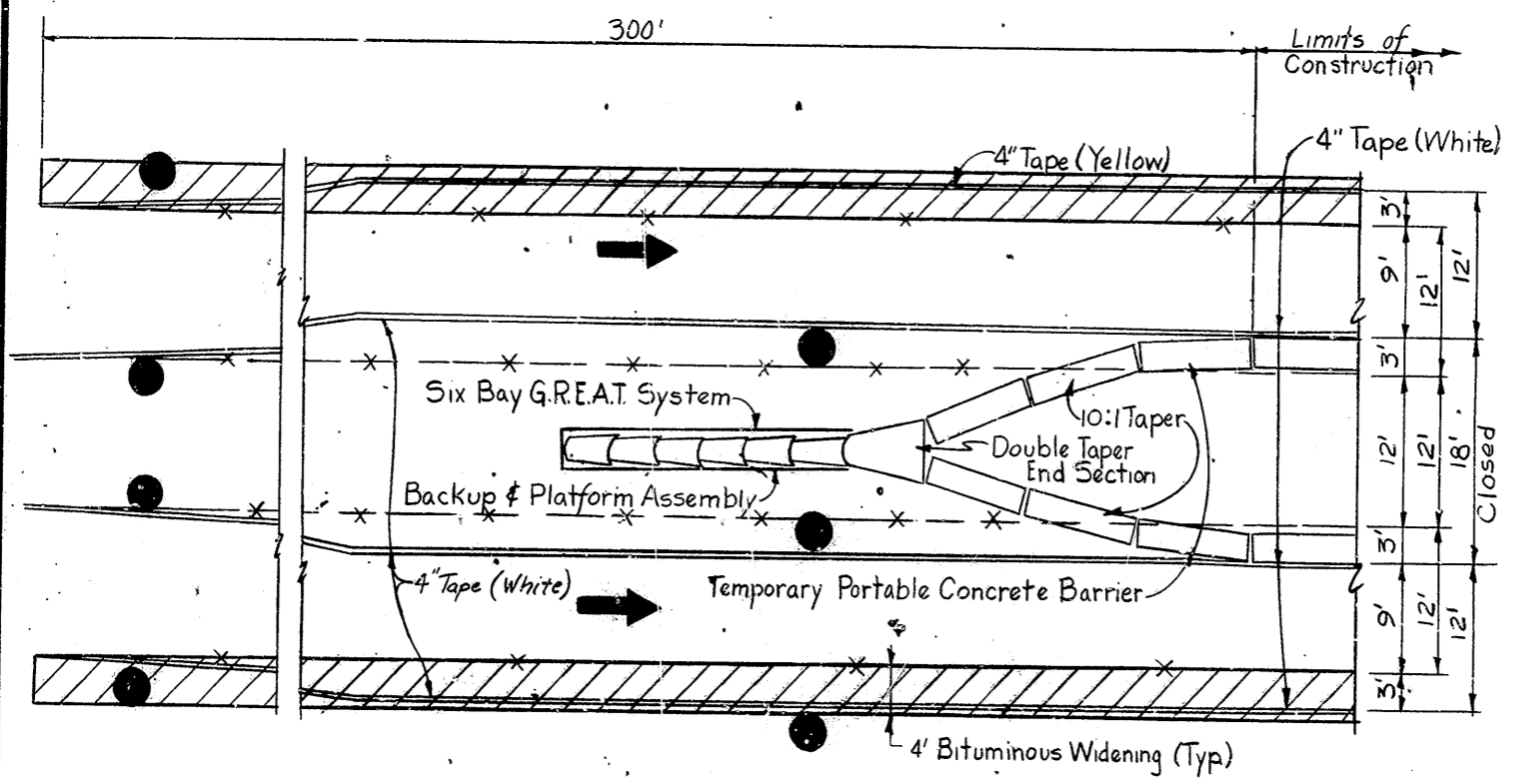


See Rd. Std. Sheet
1B Detours (W.B. 5285A only)



LEFT LANE CLOSED
(RIGHT LANE CLOSED SIMILAR)

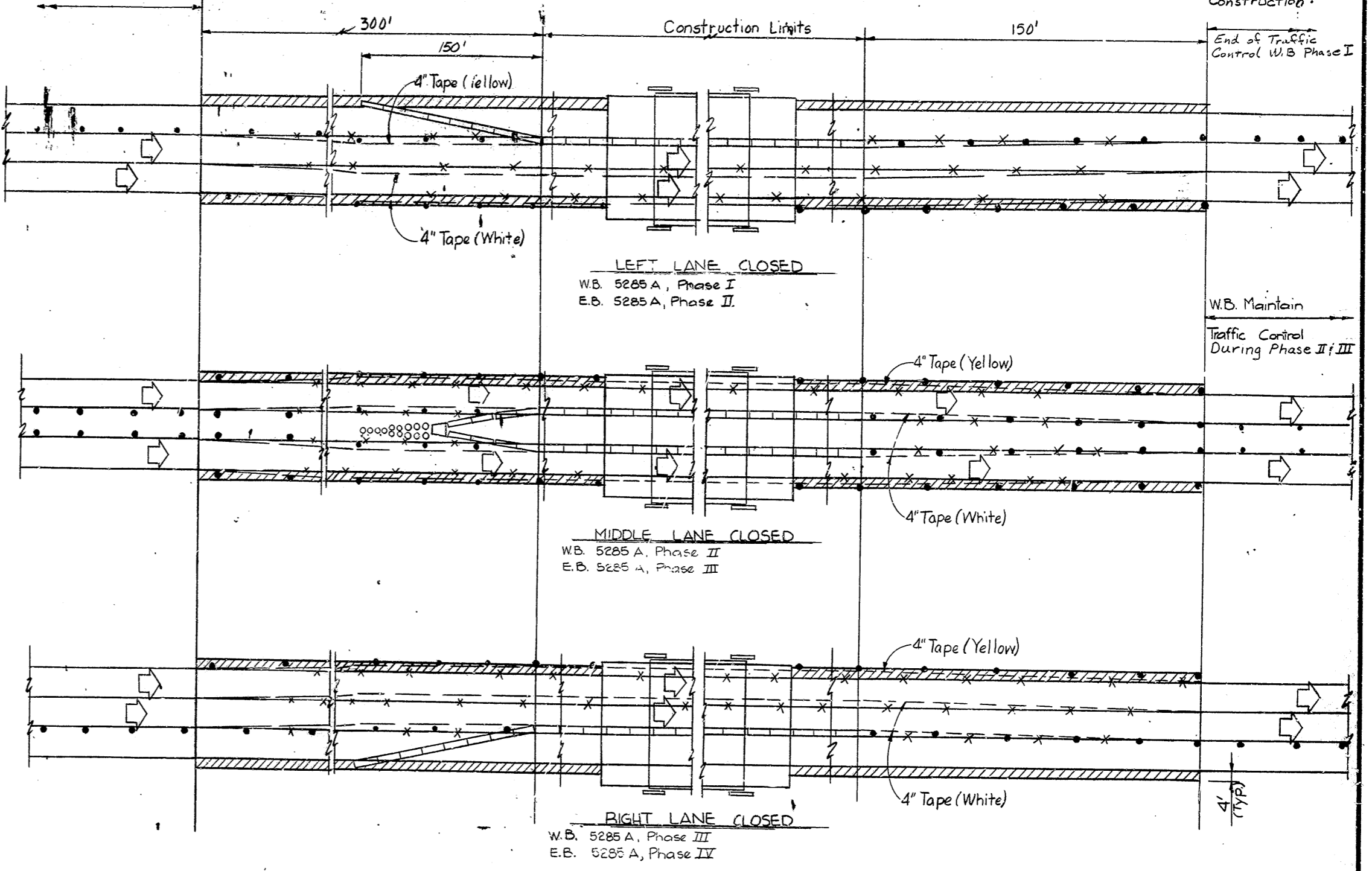


**TEMPORARY IMPACT ATTENUATION DEVICE
CENTER LANE CLOSED**

The Temporary Impact Attenuation Device shall be paid for "Each" and shall be either the "Sand Barrel Array" as manufactured by Fibco, Inc., Fitch Inertial Barrier, 15 Lewis Street, Hartford, Connecticut, 06103, or "Energite Barrier" or "Six (6) Bay G.R.E.A.T. System" as manufactured by Energy Absorption Systems, Inc., 1 I.B.M. Plaza, Chicago, Illinois, 60611. The devices shall be installed in accordance with the manufacturers' specifications.

1. For alternate installation See Detail "A" Drawing T-1
2. For Detail of Double Taper End Section, See Temporary Concrete Barrier and Rd. Std. CB 2.
3. Backup & Platform Assembly shall be constructed & installed in accordance with manufacturers' specifications.

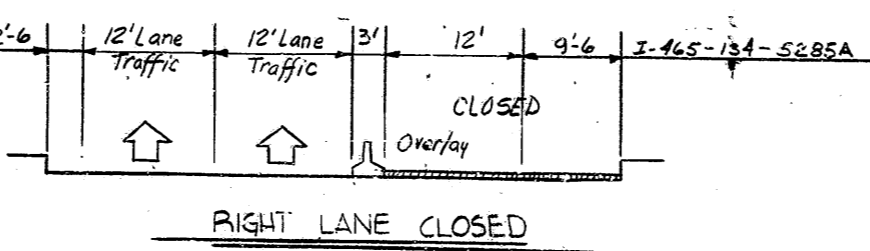
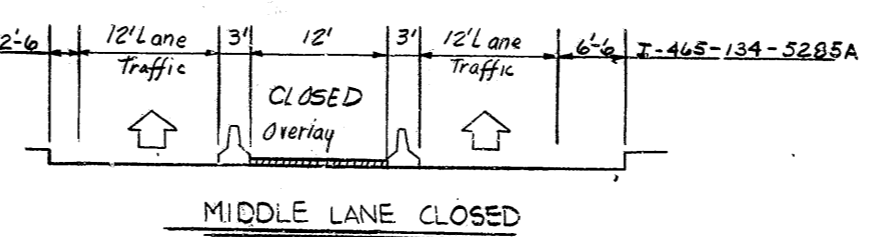
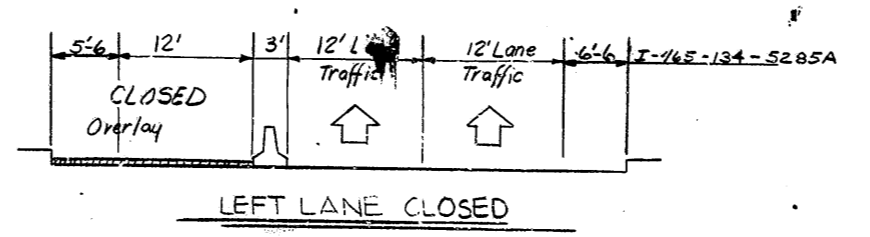
DESIGNED	CKD
DRAWN	CKD
TRACED	CKD



LEFT LANE CLOSED
W.B. 5285 A, Phase I
E.B. 5285 A, Phase II

MIDDLE LANE CLOSED
W.B. 5285 A, Phase II
E.B. 5285 A, Phase III

RIGHT LANE CLOSED
W.B. 5285 A, Phase III
E.B. 5285 A, Phase IV



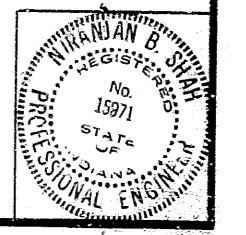
NOTES:
Hatched area indicates Bituminous Widening to remain in place when construction is completed.
For Temporary Concrete Barrier see Rd. Std. CB 2.
• Indicates Metal Drums or Type I or Type II Barricades with Type "C" Steady Burning Lights.
See Rd. Std. Sheet 1 Detours & Rd. Std. Sheet 1B for Traffic Control Devices.
Bituminous Widening to be 990 lbs/Sq. Yd. Bituminous Base Type 5D.
Bituminous Widening to be 4'-0" wide unless noted.
There is no Traffic Control on EB structure, Phase I and on WB structure, Phase IV.

All conflicting existing pavement stripes must be removed before the temporary tape is placed.

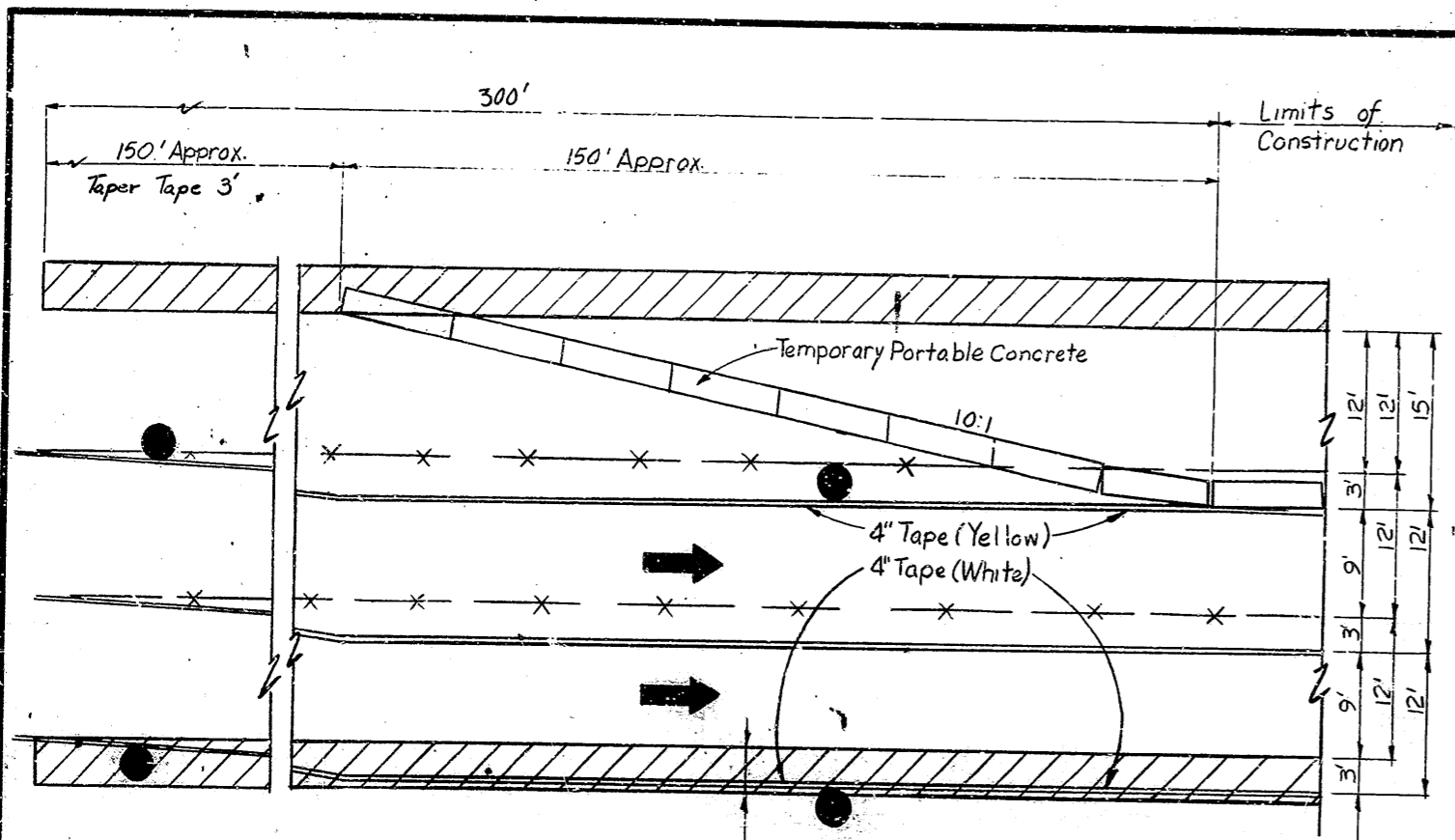
**TRAFFIC MAINTENANCE DETAILS - 2
INDIANA STATE HIGHWAY COMMISSION**

SCALE: NONE DATE: JULY 2, 1981

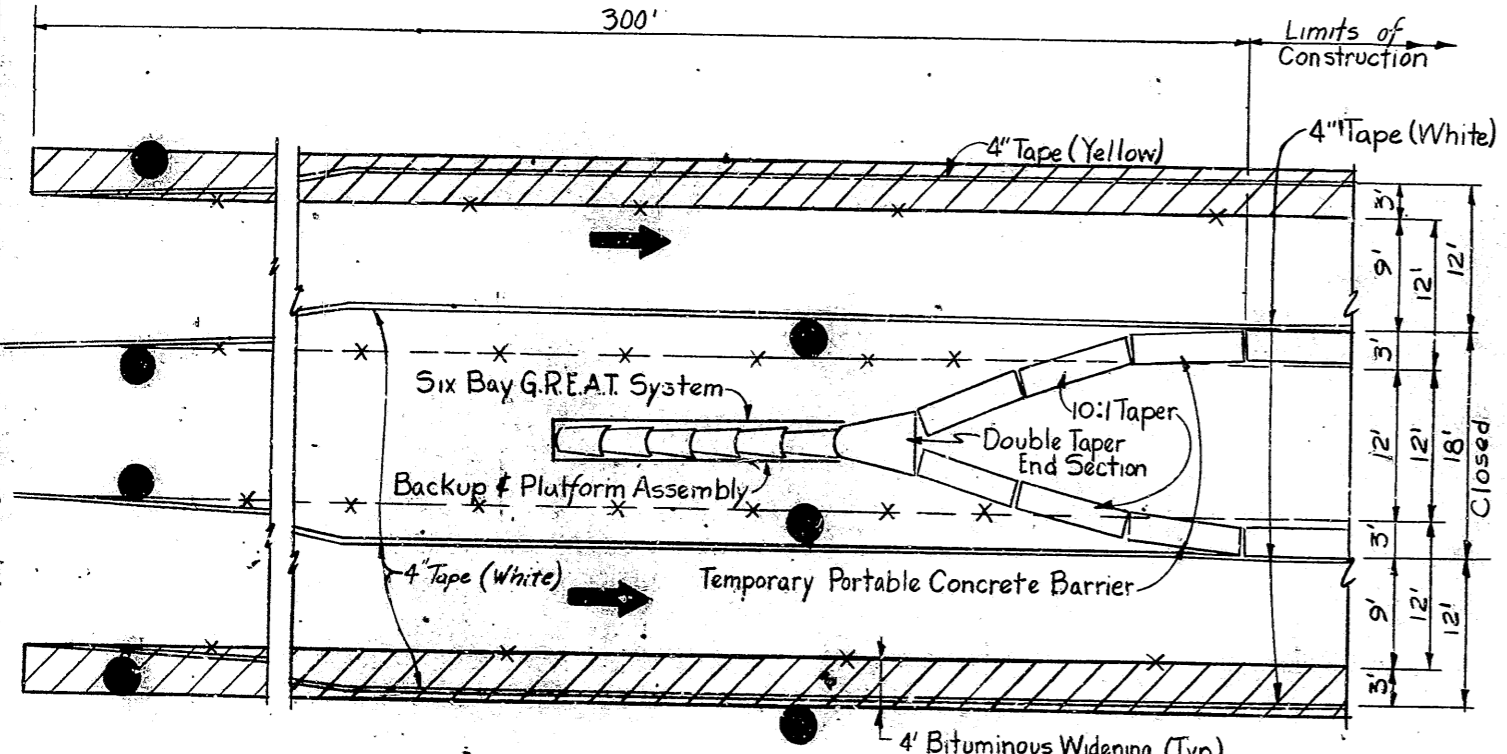
DRAWING: 7-2 OF 12 SHEET: 72 OF 116
PROJECT: I-FRI-465-4 (215) 134
CONTRACT NO. B-13219
BRIDGE FILE: I-465-134-5285A 5434A



Rev. 6-7-81, Phase I, II, III, IV notes; note added; Entrance & Exit notes.



LEFT LANE CLOSED
(RIGHT LANE CLOSED SIMILAR)

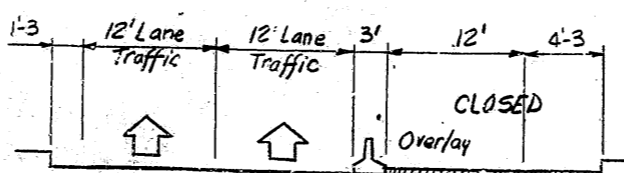
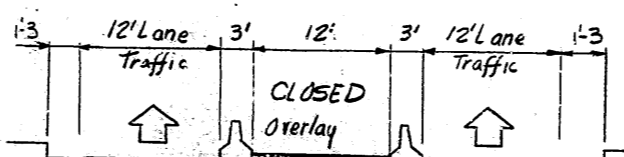
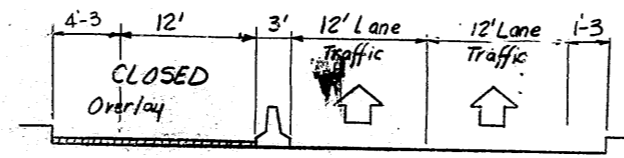
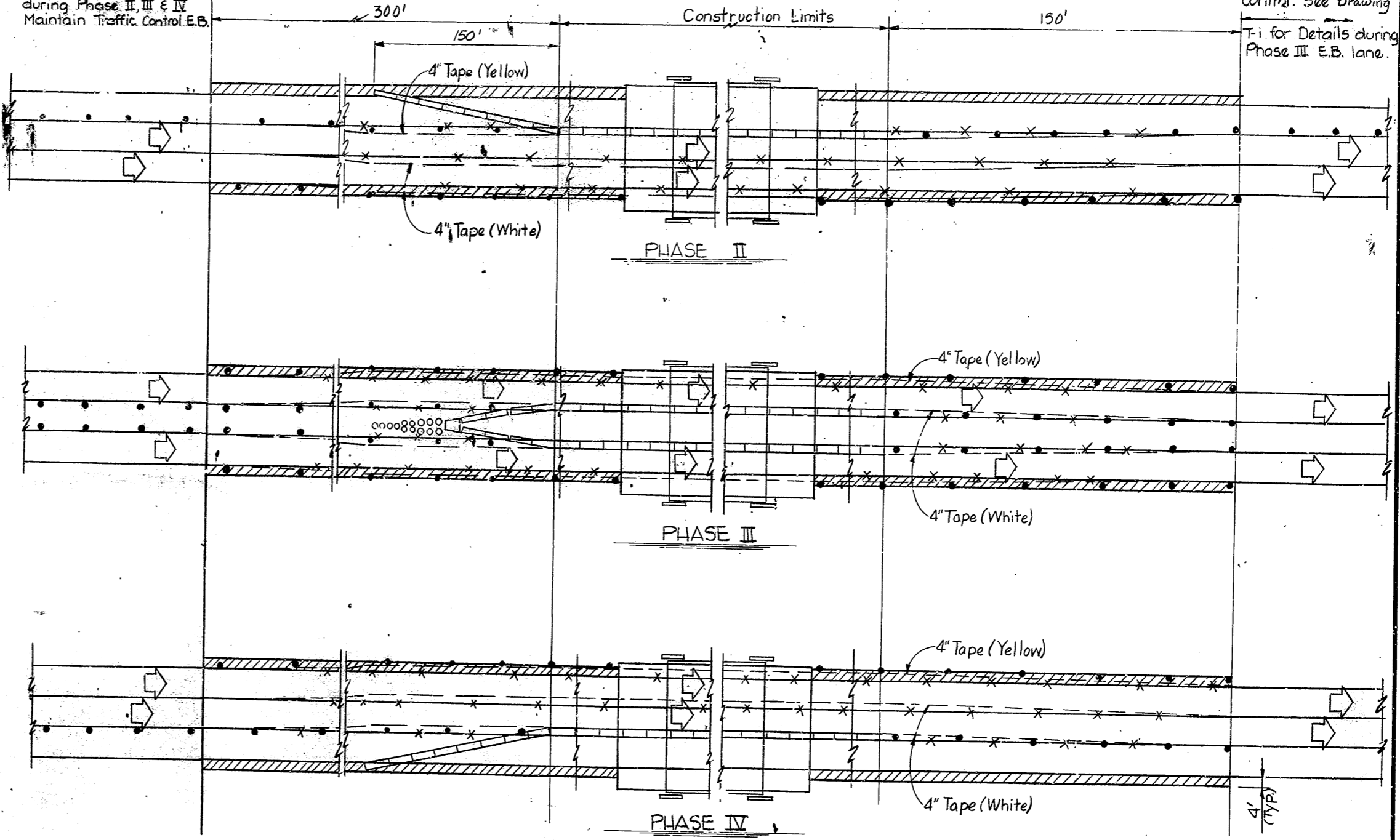


TEMPORARY IMPACT ATTENUATION DEVICE
CENTER LANE CLOSED

The Temporary Impact Attenuation Device shall be paid for "Each" and shall be either the "Sand Barrel Array" as manufactured by Fibco, Inc., Fitch Inertial Barrier, 15 Lewis Street, Hartford, Connecticut, 06103, or "Energy Barrier" or "Six (6) Bay G.R.E.A.T. System" as manufactured by Energy Absorption Systems, Inc., 1 IBM Plaza, Chicago, Illinois, 60611. The devices shall be installed in accordance with the manufacturers specifications.

1. For alternate installation See Detail "A" Drawing T-
2. For Detail of Double Taper End Section, See Temporary Concrete Barrier
3. Backup & Platform Assembly shall be constructed & installed in accordance with manufacturers specifications.

See Sheet T-2B for details for W.B. Traffic Control during Phase II, III & IV. Maintain Traffic Control E.B.

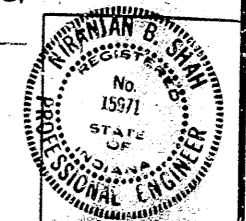


NOTES:
 Hatched area indicates Bituminous Widening to remain in place when construction is completed.
 For Temporary Concrete Barrier see Rd. Std. CB2
 • Indicates Metal Drums or Type I or Type II Barricades with Type "C" Steady Burning Lights.
 See Rd. Std. Sheet 1 Detours & Rd. Std. Sheet 1B for Traffic Control Devices.
 Bituminous Widening to be 990 Lbs./Sq. Yd. Bituminous Base Type 5D.
 Bituminous Widening to be 4:0 wide unless noted.
 There is no Traffic Control on either structure during Phase I.
 All conflicting existing pavement stripes must be removed before the temporary tape is placed.

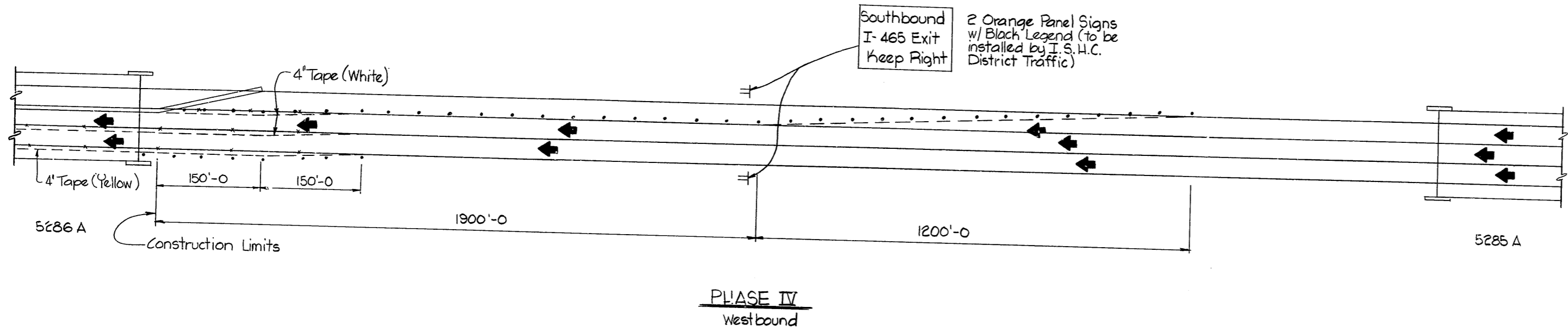
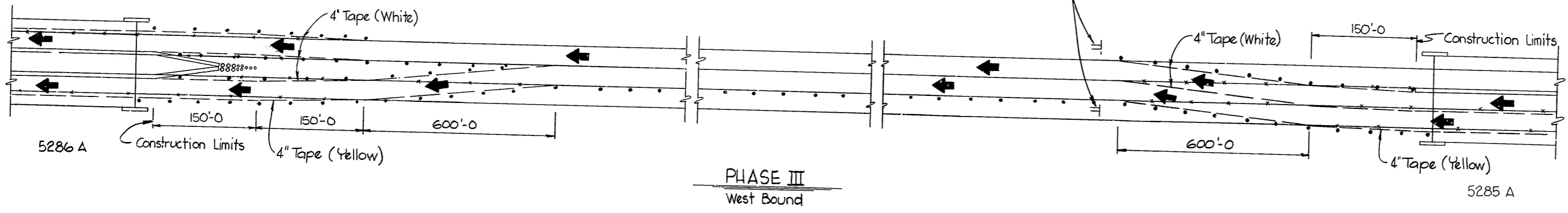
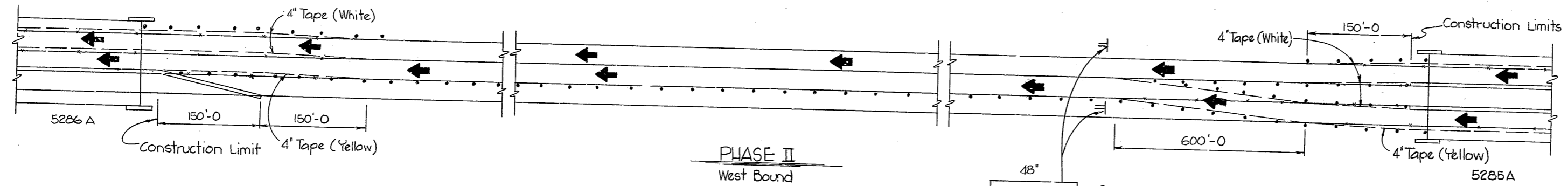
TRAFFIC MAINTENANCE DETAILS-2A
INDIANA STATE HIGHWAY COMMISSION

SCALE:- NONE DATE:- August 7, 1981

DRAWING: T-2A OF 12 SHEET: 72A OF 116
 PROJECT: I-FRI-465-4
 CONTRACT NO.
 BRIDGE FILE: I-465-135-5286A



DESIGNED: C.K.D.
 DRAWN: C.K.D.
 TRACED: C.K.D.



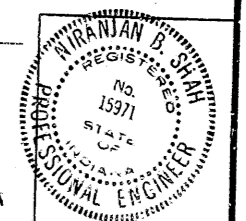
TRAFFIC MAINTENANCE DETAILS 2B
INDIANA DEPARTMENT OF HIGHWAYS

SCALE:- NONE

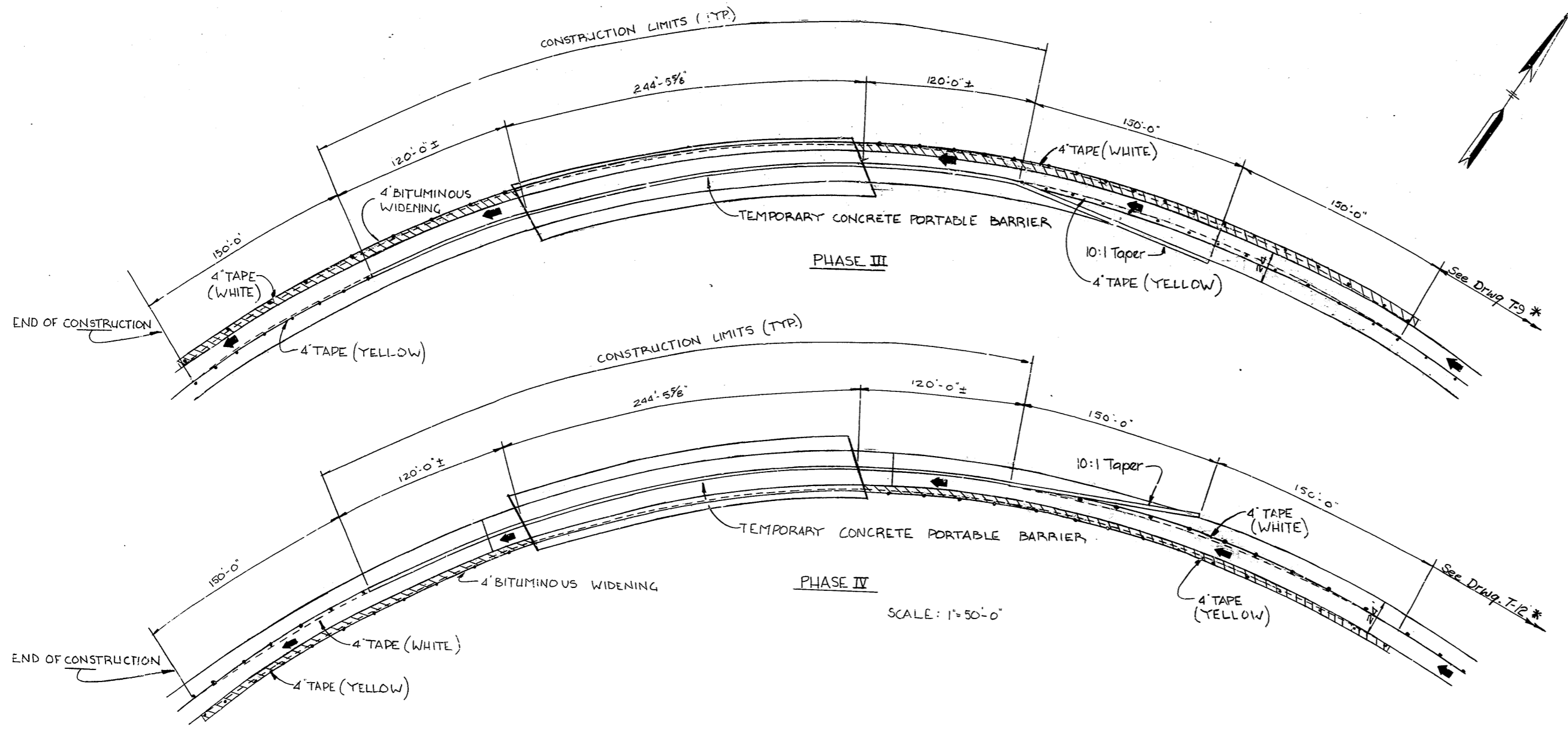
DATE:- August 7, 1981

William B. Riley
SENIOR DESIGNER

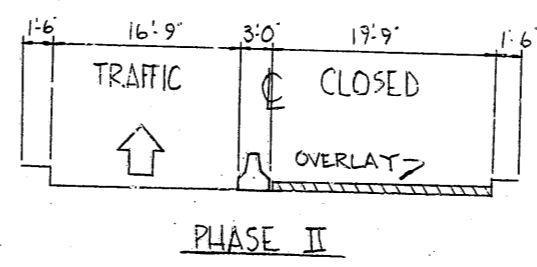
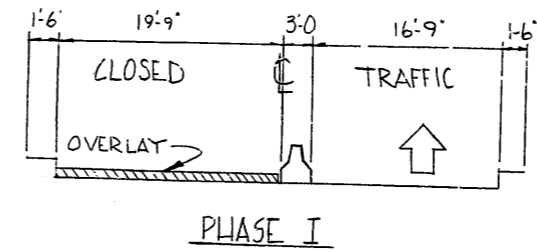
DRAWING: T-2B OF 12 SHEET: 2B OF 116
PROJECT: I-FRI-465-4 (215)134
CONTRACT NO. B-13219
BRIDGE FILE: I-465-134-5285A & I-465-135-5286A



DESIGNED	CKD
DRAWN	RLP
TRACED	RLP
	CKD



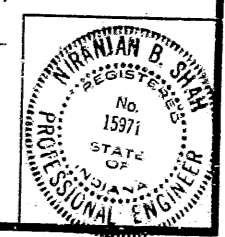
Notes:
 See Drwg. T-2 for Notes & Legend.
 * Phase III and Phase IV at this structure to be concurrent with Phase III and Phase IV respectively at structure I-465-136-5287JA. (See Drwg. T-9 and T-12 for details.)
 No Traffic Control during Phase I & II



TRAFFIC MAINTENANCE DETAILS-3
INDIANA STATE HIGHWAY COMMISSION

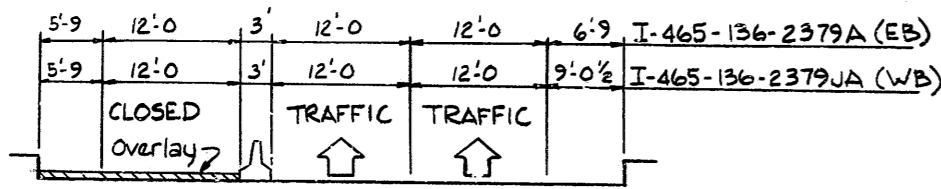
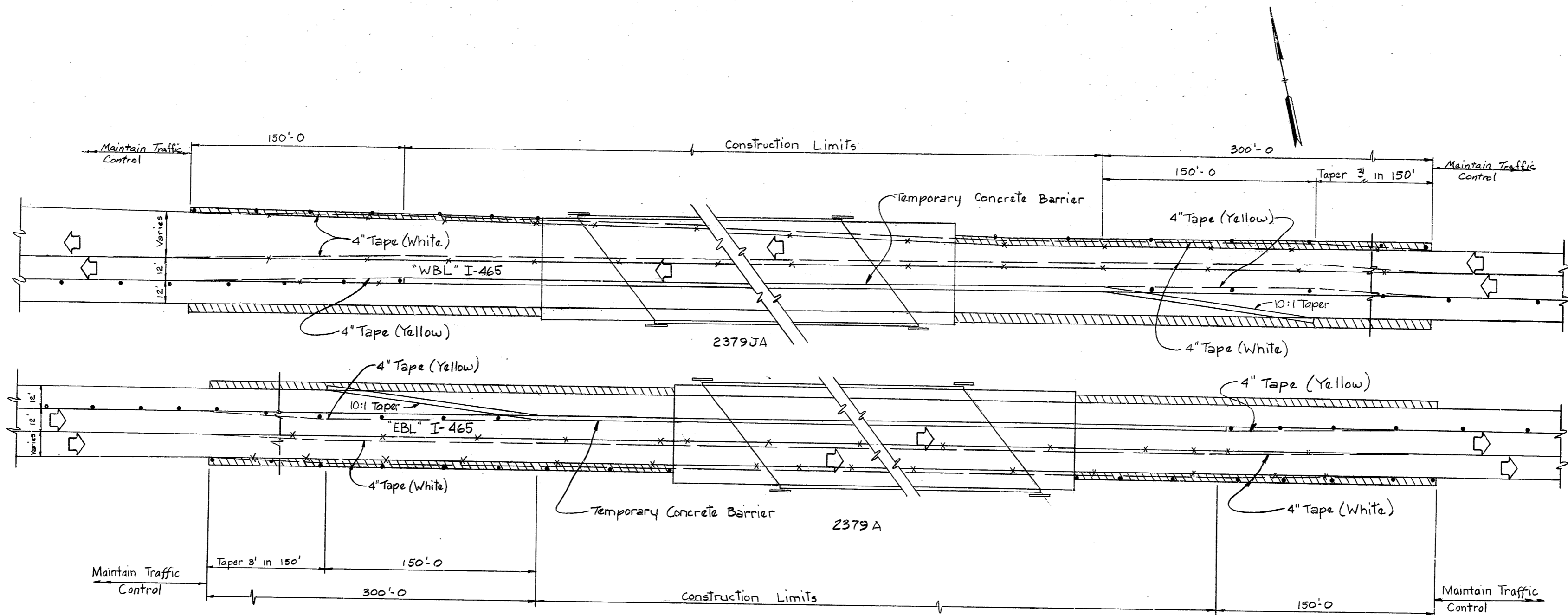
SCALE:- AS NOTED DATE:- JULY 2, 1981

DRAWING: T-3 OF 12 SHEET: 73 OF 116
 PROJECT:- I-FRI-465-4(215)134
 CONTRACT NO. B-13219
 BRIDGE FILE:- I-465-136-5435A



DESIGNED: CKD
 DRAWN: RLP 7-22-81 CKD 1/25 4-28-81
 TRACED: CKD

Rev: 8-7-81; Phase III, IV; See Drwg T-9; Note added.



PHASE I

See Drwg T-2 for Notes and Legend.
 No Traffic Control on either Structure during Phase I.

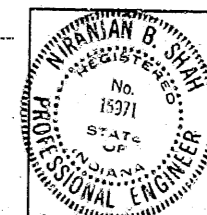
PHASE II
 TRAFFIC MAINTENANCE DETAILS-4
 INDIANA STATE HIGHWAY COMMISSION

SCALE:- None

DATE:- JULY 2, 1981

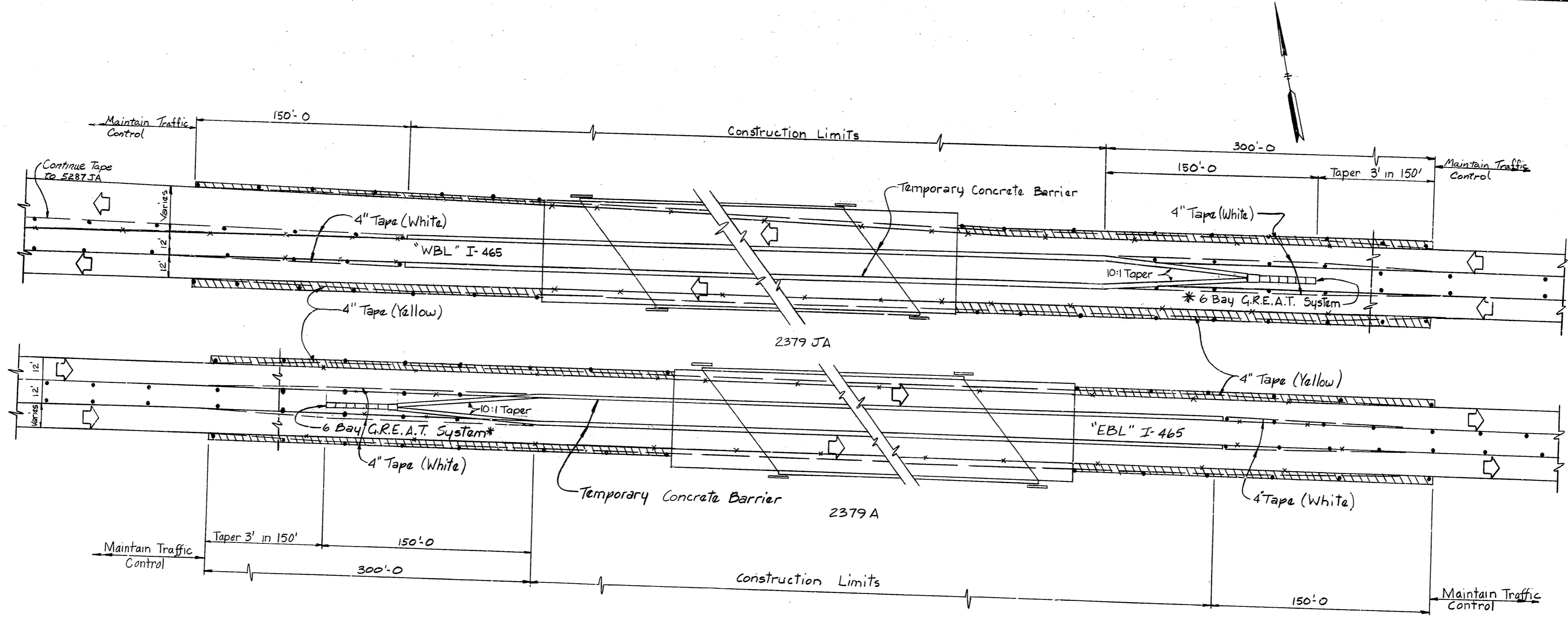
SENIOR DESIGNER

DRAWING: T-4 OF 12 SHEET: 74 OF 116
 PROJECT: I-FRI-465-4(215)-134
 CONTRACT NO. B-13219
 BRIDGE FILE: I-465-136-2379A & 2379JA

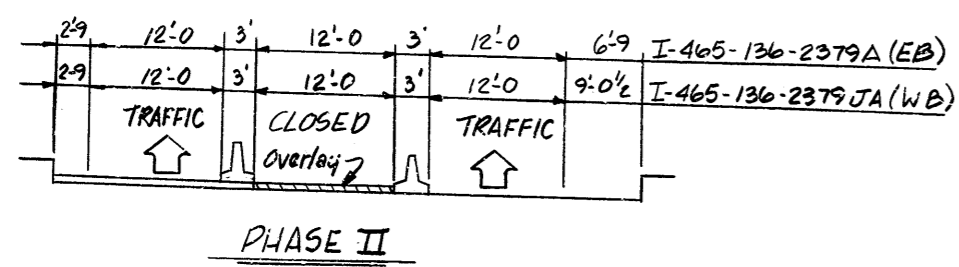


DESIGNED: CKD
 DRAWN: RLP
 TRACED: CKD

Rev: 8-7-81; Note added, Phase II



*For alternate installation see Detail 'A' on Drawing 'T-1'.

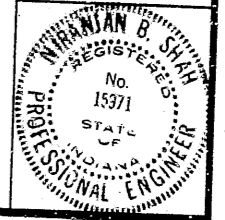


See Drawing T-2 for Notes and Legends
No Traffic Control on either Structure during Phase I.

PHASE III
TRAFFIC MAINTENANCE DETAIL S-5
INDIANA STATE HIGHWAY COMMISSION

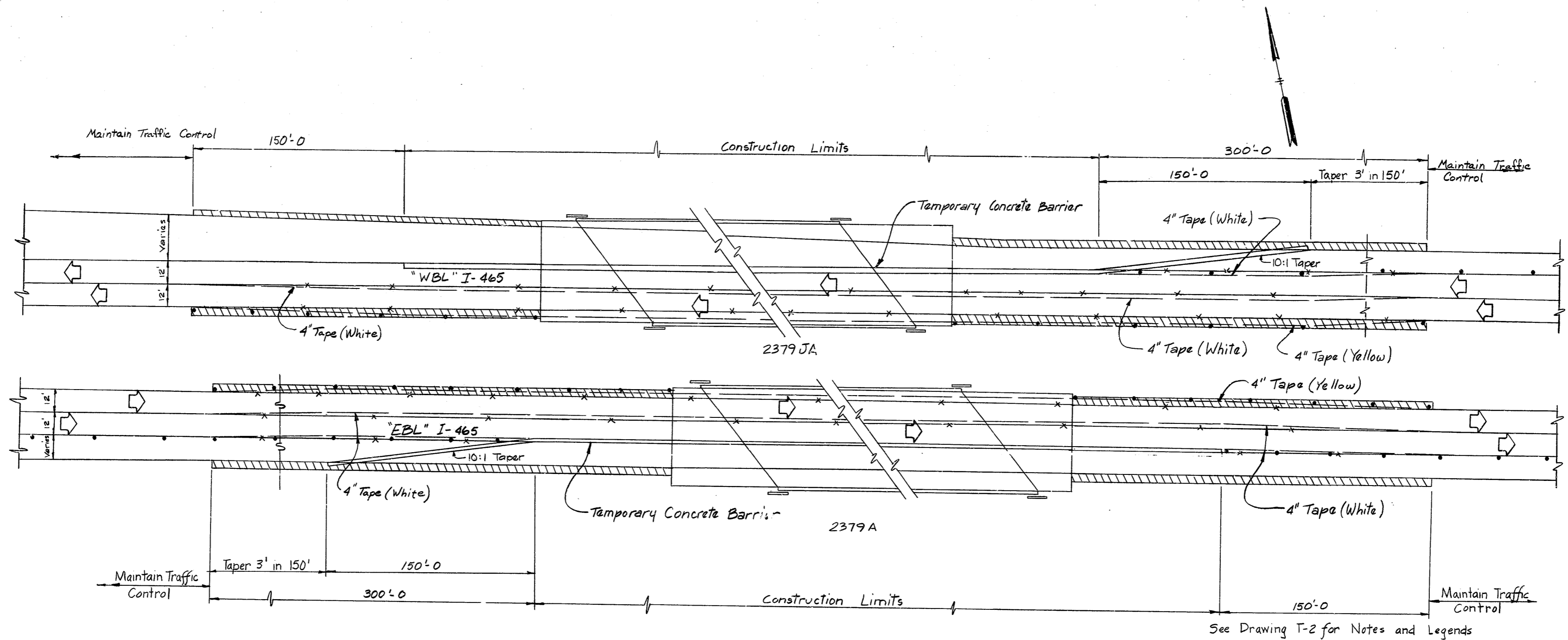
SCALE: - None DATE: - JULY 2, 1981

DRAWING: T-5 OF 12 SHEET: 75 OF 116
PROJECT: - I-FRI-465-4(215)-134
CONTRACT NO. B-13219
BRIDGE FILE: - I-465-136-2379A & 2379JA



DESIGNED: CKD
DRAWN: RLP '80 CKD JAS '80
TRACED: CKD

Rev: 8-7-81; Note added; Phase III; Tape Note added.



See Drawing T-2 for Notes and Legends

2'-9"	12'-0"	12'-0"	3'	12'-0"	9'-9"	I-465-136-2379A(EB)
2'-9"	12'-0"	12'-0"	3'	12'-0"	12'-0 1/2"	I-465-136-2379JA(WB)
TRAFFIC	TRAFFIC		CLOSED	Overlay		

PHASE III

See Drawing T-2 for Notes & Legends
 No Traffic Control on either Structure during Phase I.

PHASE IV
 TRAFFIC MAINTENANCE DETAILS-6
 INDIANA STATE HIGHWAY COMMISSION

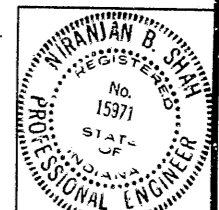
SCALE: None

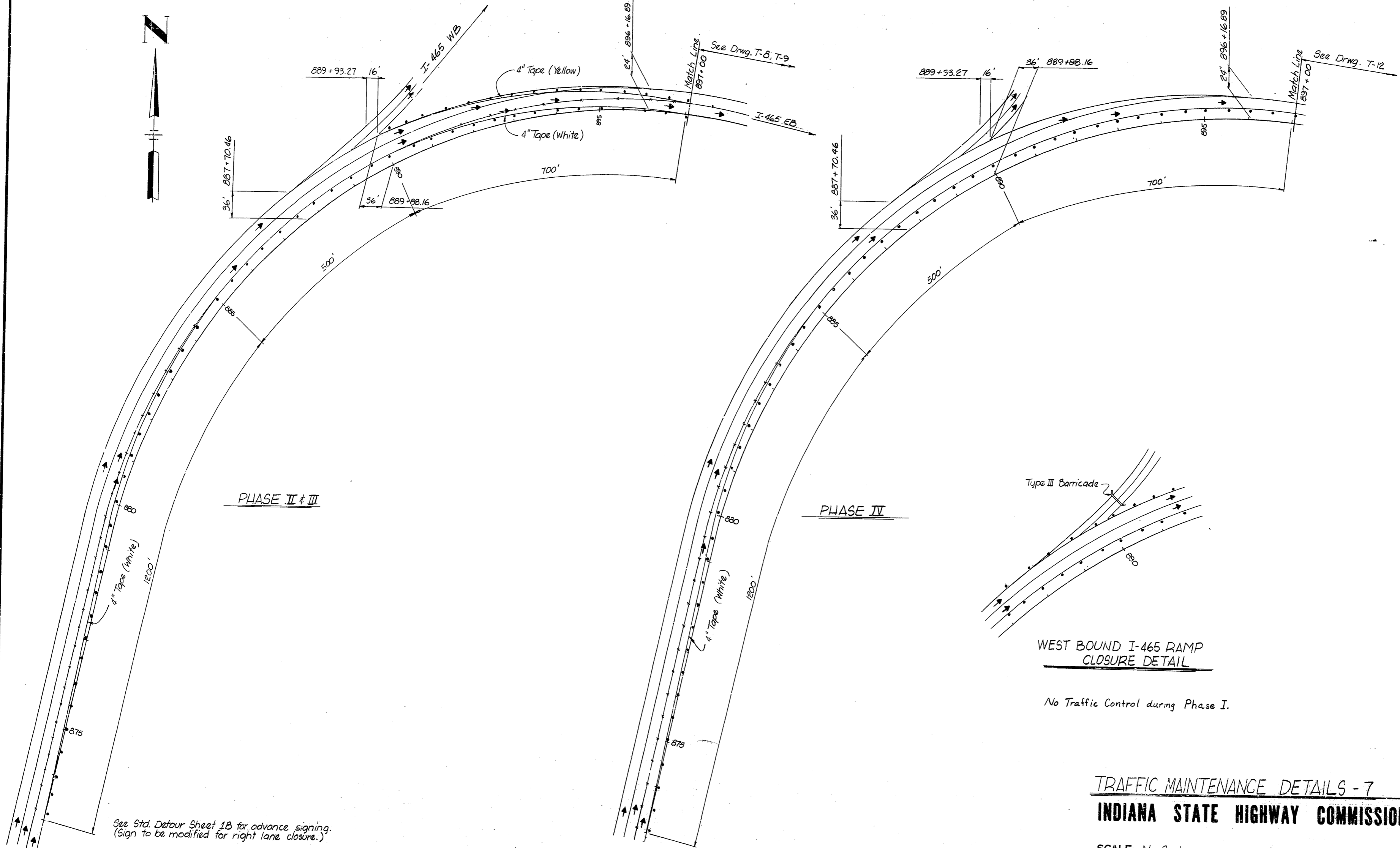
DATE: JULY 2, 1981

DESIGNED: CKD
 DRAWN: RLP/80 CKD JAS/80
 TRACED: CKD

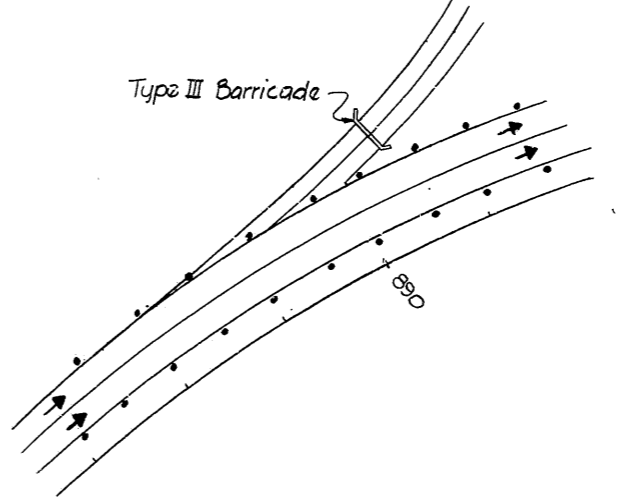
Rev: 8-7-81. Note added: Phase IV. Detail B deleted.

DRAWING: T-6 OF 12 SHEET: 76 OF 116
 PROJECT: I-FRI-465-4(215)-134
 CONTRACT NO. B-13219
 BRIDGE FILE: I-465-136-2379A & 2379JA





See Std. Detour Sheet 1B for advance signing.
(Sign to be modified for right lane closure.)



WEST BOUND I-465 RAMP
CLOSURE DETAIL

No Traffic Control during Phase I.

TRAFFIC MAINTENANCE DETAILS - 7
INDIANA STATE HIGHWAY COMMISSION

SCALE:- No Scale DATE:- JULY 2, 1981

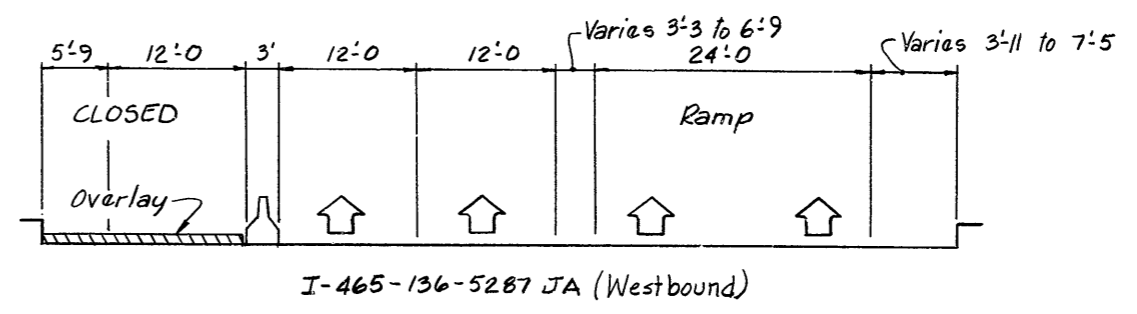
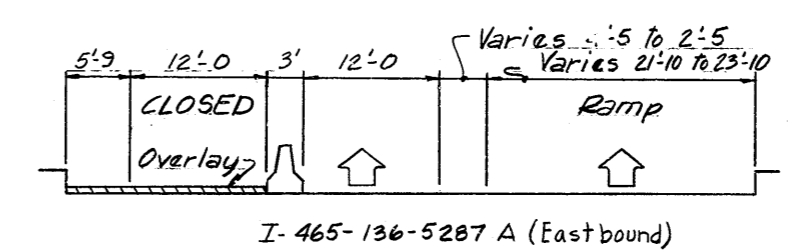
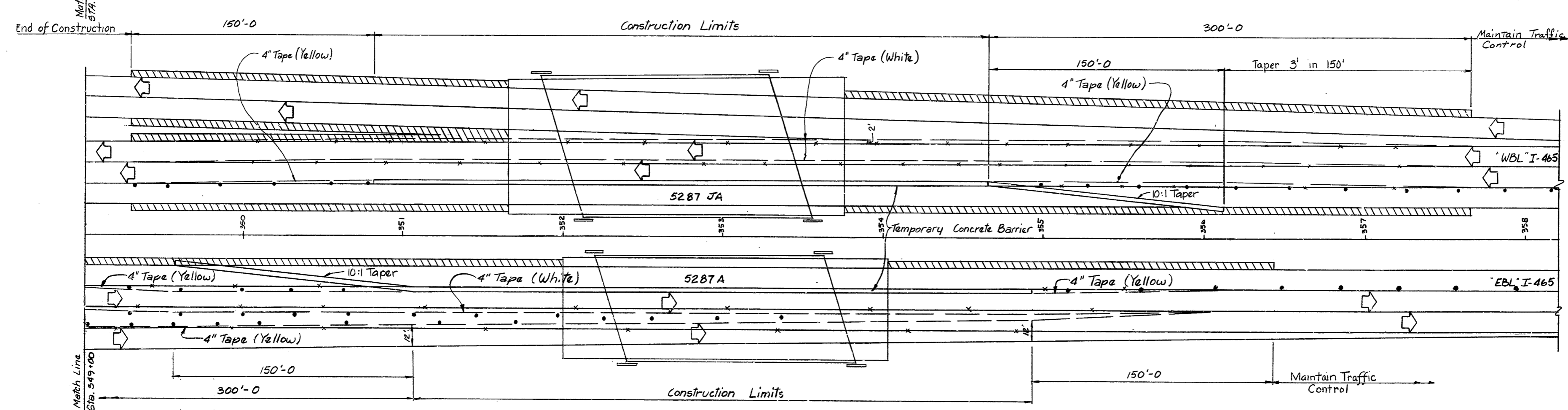
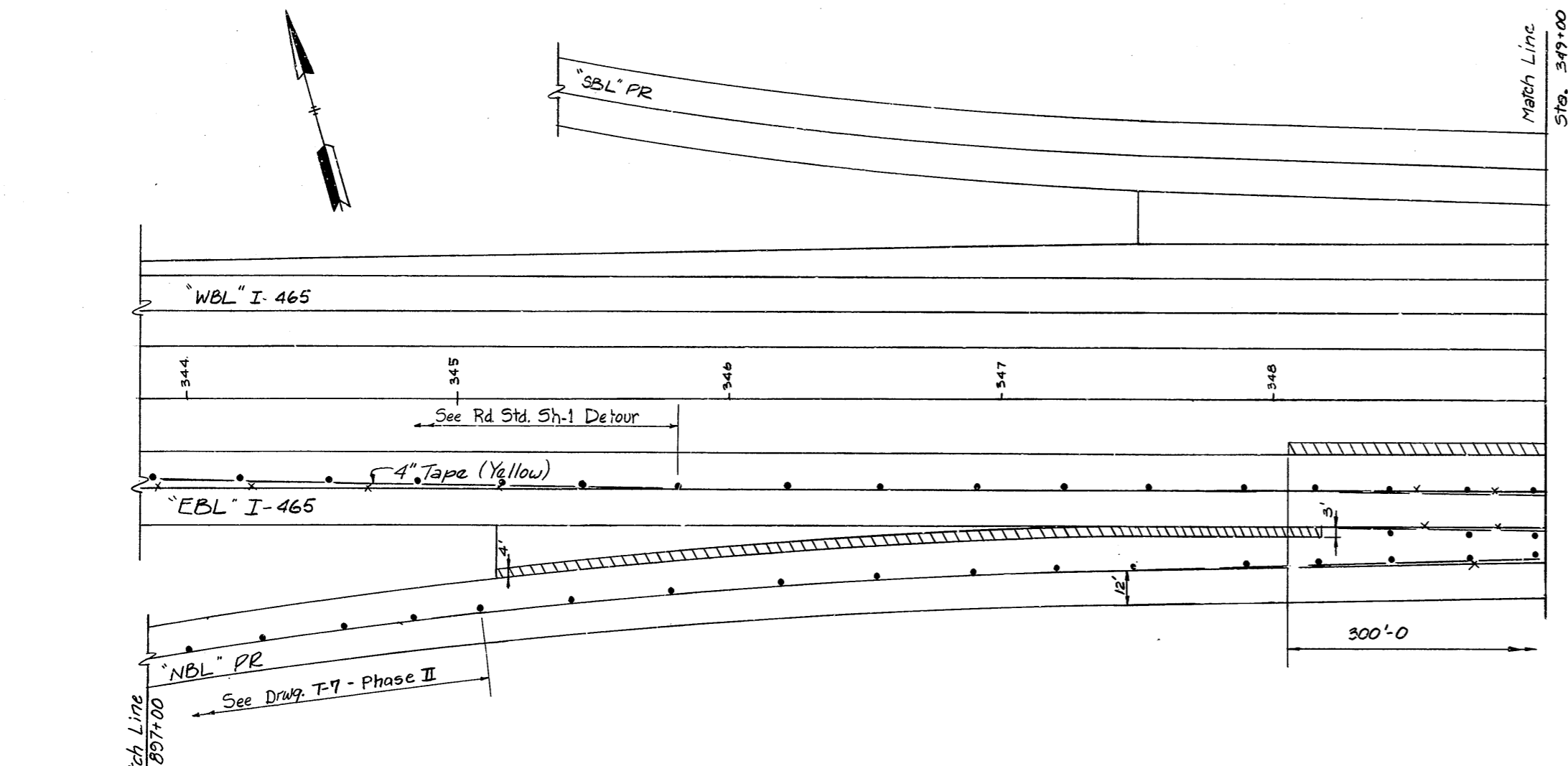
SENIOR DESIGNER

DRAWING: 77 OF 12 SHEET: 77 OF 116
PROJECT:- I-FRI-465-4(215)134
CONTRACT NO. B-13219
BRIDGE FILE:- I-465-136-5287A



DESIGNED	CK'D
DRAWN <i>RLP</i>	CK'D <i>NBS</i>
TRACED	CK'D

Rev: 8-7-81; Phase II, III; Phase IV. Note added; Exit note T-9, T-12

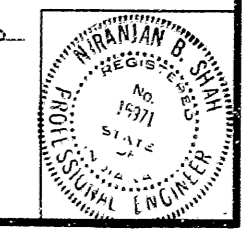


See Drawing T-2 for Notes and Legends.
No Traffic Control on either Structure during Phase I.

PHASE II
TRAFFIC MAINTENANCE DETAILS-8
INDIANA STATE HIGHWAY COMMISSION

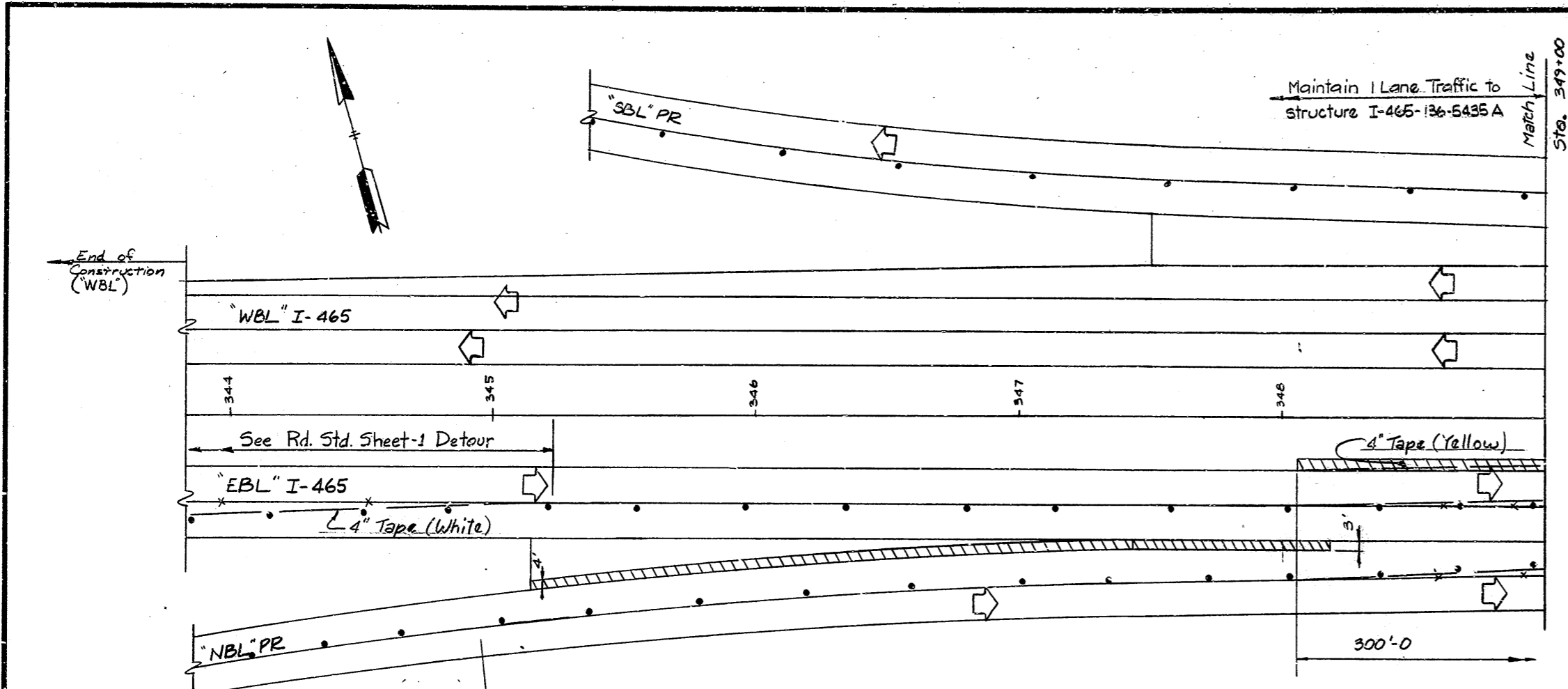
SCALE:- 1"=30'-0' DATE:- JULY 2, 1981

DRAWING:- 7-8 OF 12 SHEET:- 78 OF 116
PROJECT:- I-FRI-465-4(215)134
CONTRACT NO. B-13219
BRIDGE FILE:- I-465-136-5287A & 5287JA

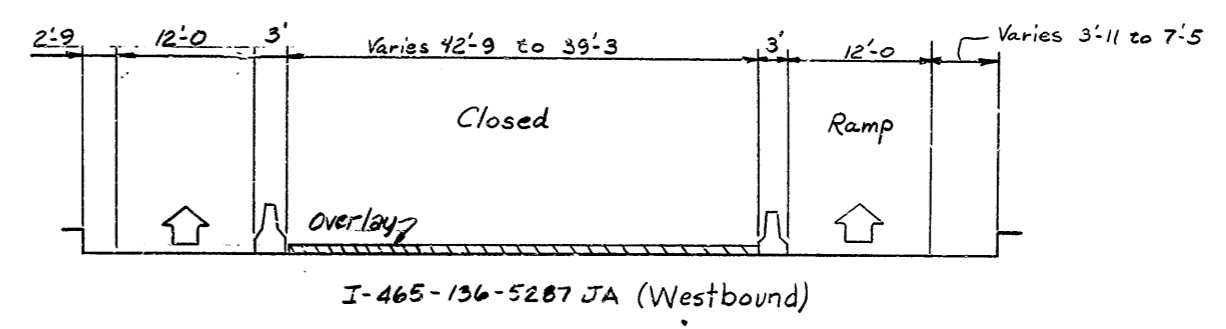
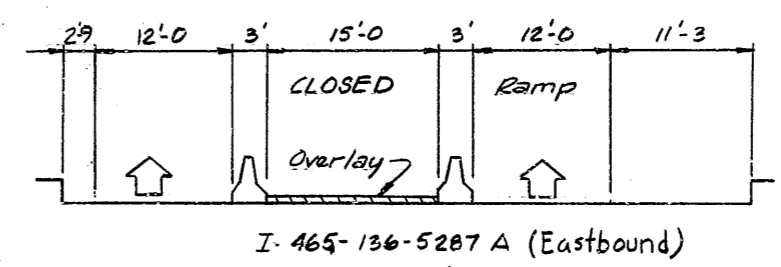


DESIGNED: C'KD
DRAWN: RLP/180 C'KD JAS/180
TRACED: C'KD

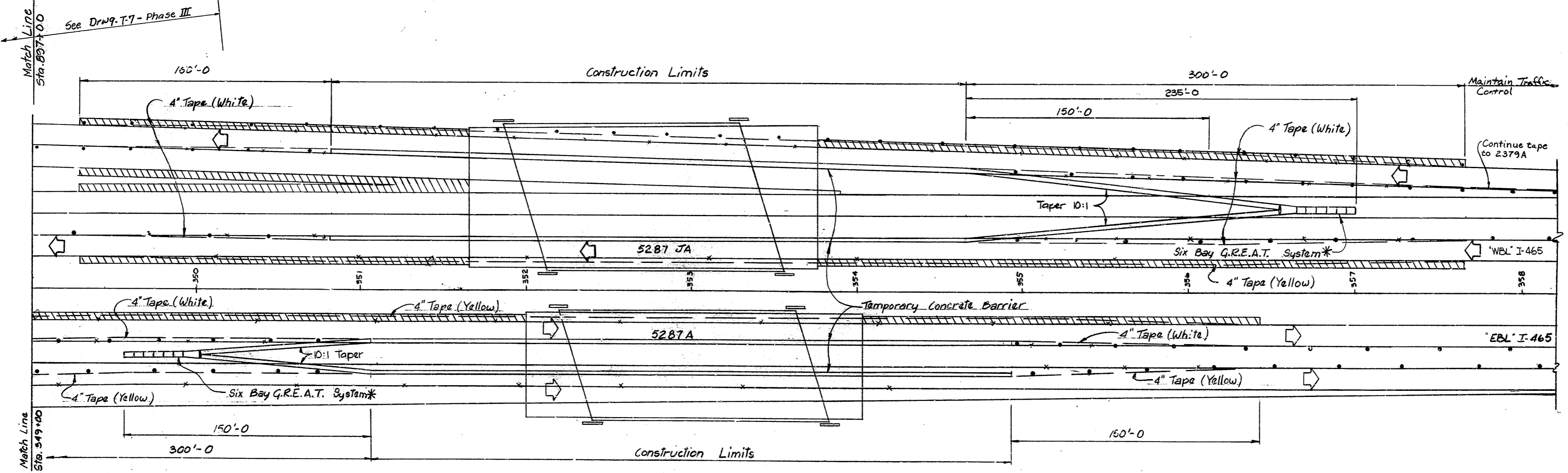
Rev: 8-7-81; Phase II; Note added.



Phase III at structure I-465-136-5287 JA to be concurrent with Phase III at structure I-465-136-5435 A. See Drwg T-3 for details.



See Drawing T-2 for Notes and Legends.
No Traffic Control on either Structure during Phase I.

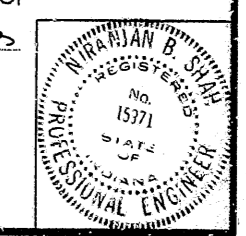


* For alternate installation see Detail 'A' on Drawing T-1

PHASE III
TRAFFIC MAINTENANCE DETAILS-9
INDIANA STATE HIGHWAY COMMISSION

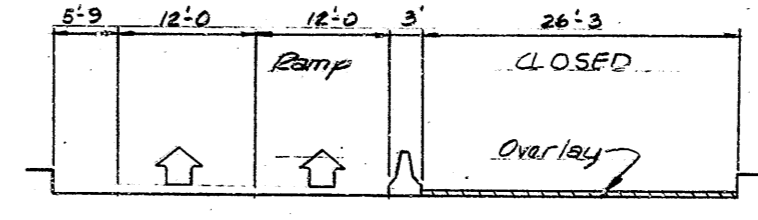
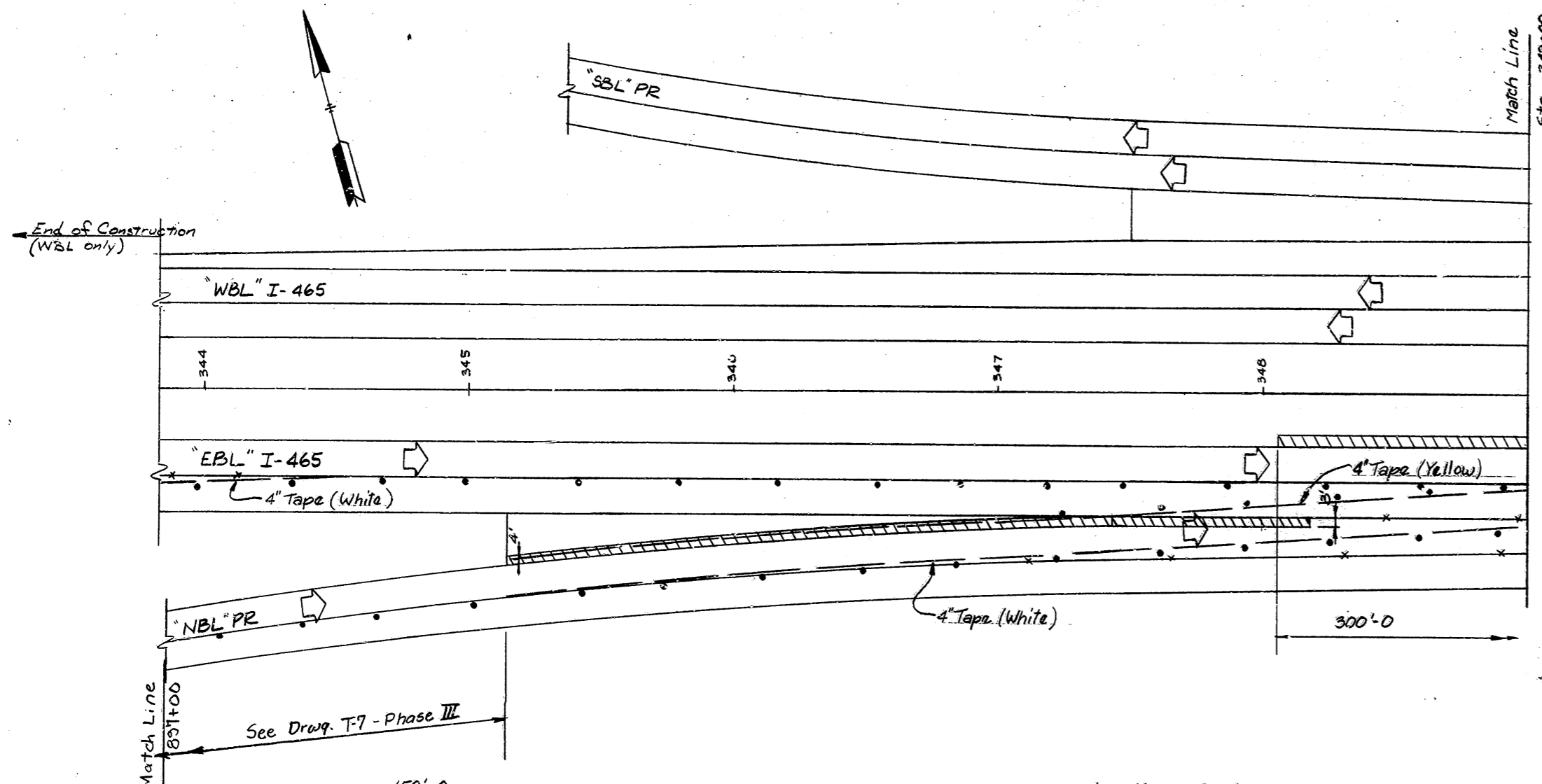
SCALE: 1"=30'-0" DATE: JULY 2, 1981

DRAWING: T-9 OF 12 SHEET: 79 OF 116
PROJECT: I-FRI-465-4 (215) 134
CONTRACT NO. B-13219
BRIDGE FILE: I-465-136-5287A & 5287JA

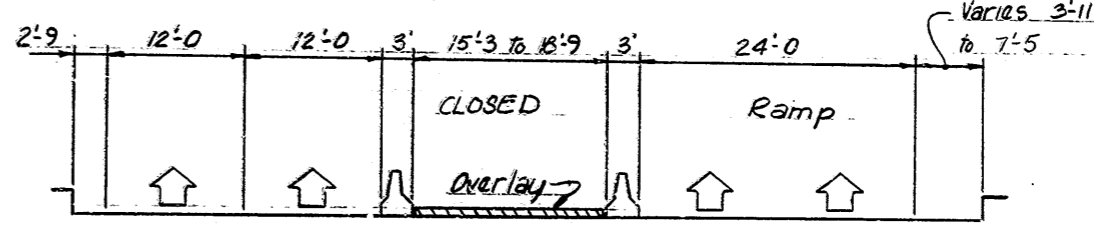


DESIGNED: RLP	CHKD: JAS
DRAWN: RLP	CHKD: JAS
TRACED: RLP	CHKD: JAS

Rev: 8-7-81, Phase III; Note added; Middle Lane Closure on 5287 JA;
Ramp lane control note; Section Detail 5287 JA; Tape note added.

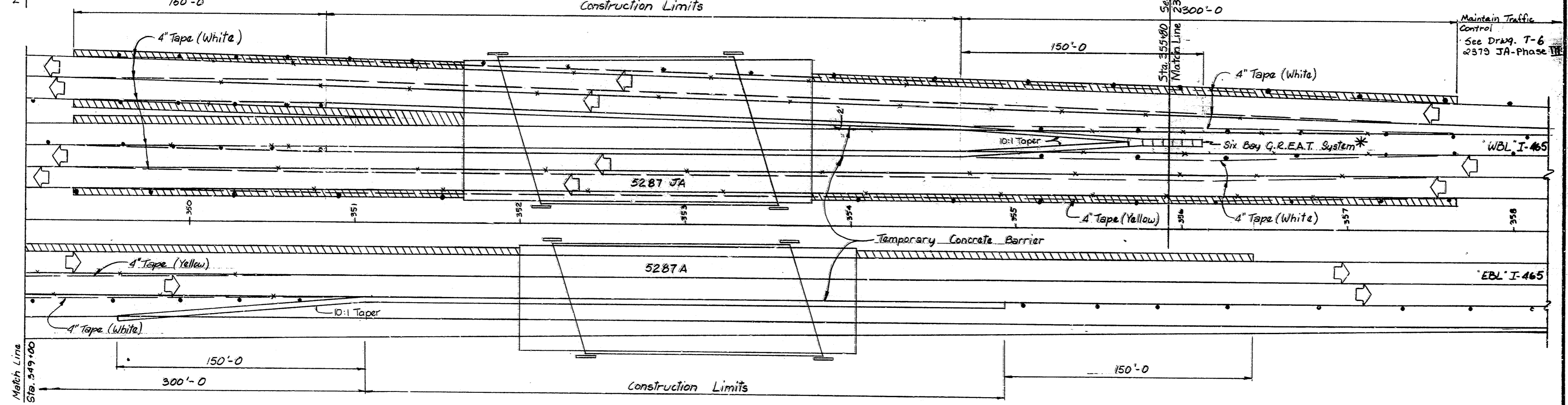


I-465-136-5287 A Eastbound



I-465-136-5287 JA Westbound

See Drawing F2 for Notes and Legends.



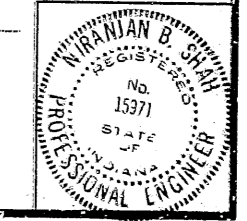
*For alternate installation see Detail 'A' on Drwg 'T-1'

VOID

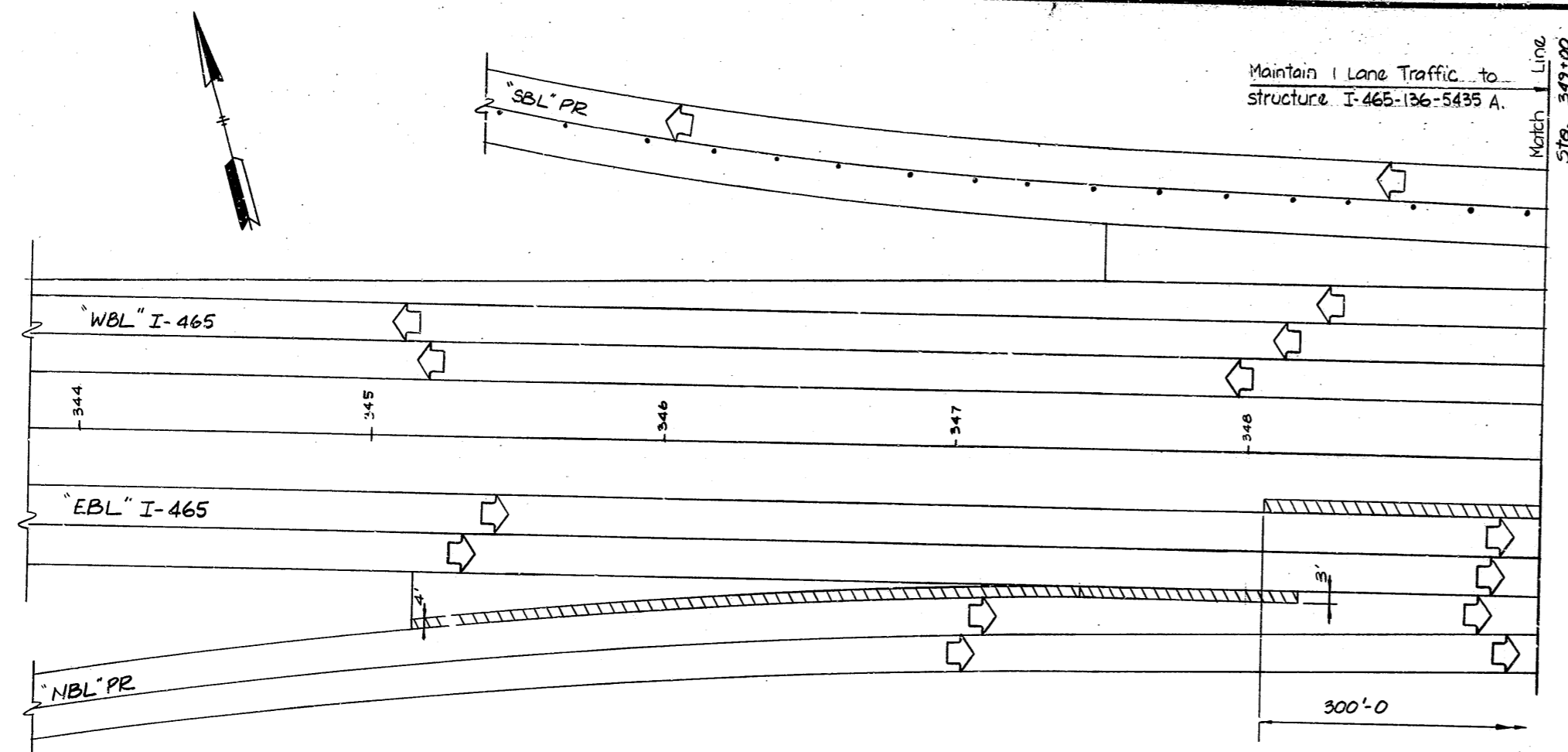
**PHASE III
TRAFFIC MAINTENANCE DETAILS-10
INDIANA STATE HIGHWAY COMMISSION**

SCALE: 1"=30'-0" DATE: JULY 2, 1981

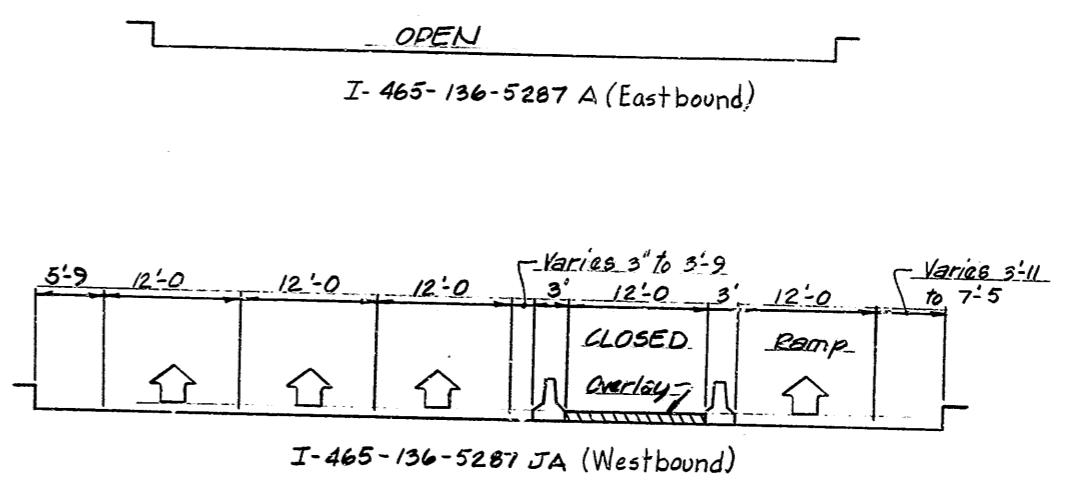
DRAWING: T-10 OF 12 SHEET: 80 OF 116
PROJECT: I-FRI-465-4(215)134
CONTRACT NO. B-13219
BRIDGE FILE: I-465-136-5287A & 5287JA



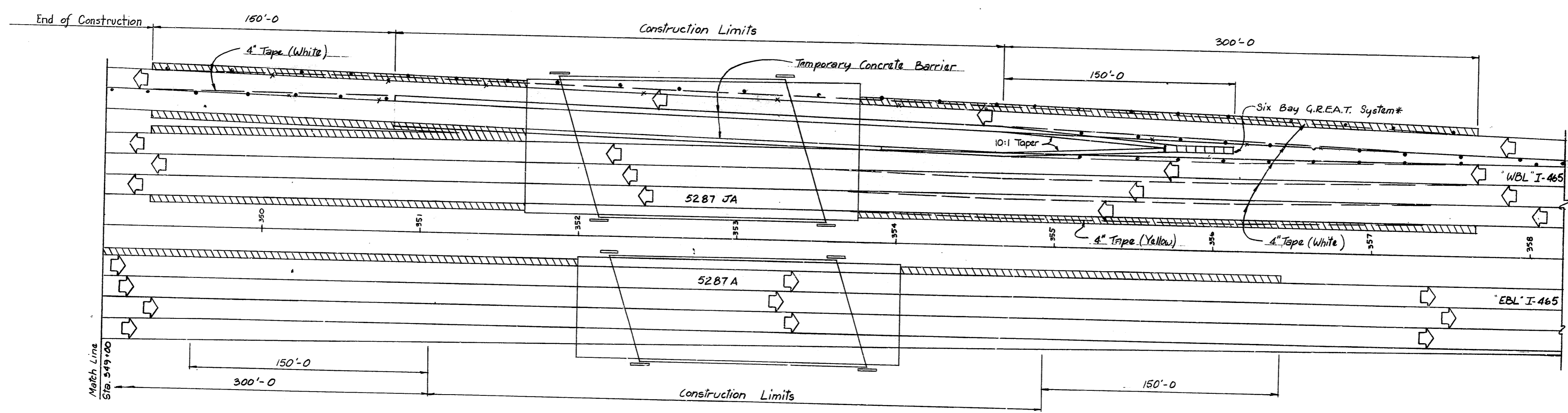
DESIGNED	CKD
DRAWN	RLP 1/80
TRACED	CKD



Phase IV at structure I-465-136-5287 JA to be concurrent with Phase I at structure I-465-136-5435 A. See Drwg. T-3 for details.



See Drawing T-2 for Notes and Legends.



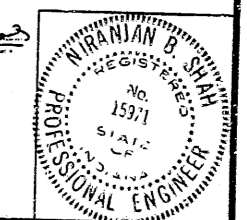
*For alternate installation see Detail 'A' on Drawing 'T-1'

VOID

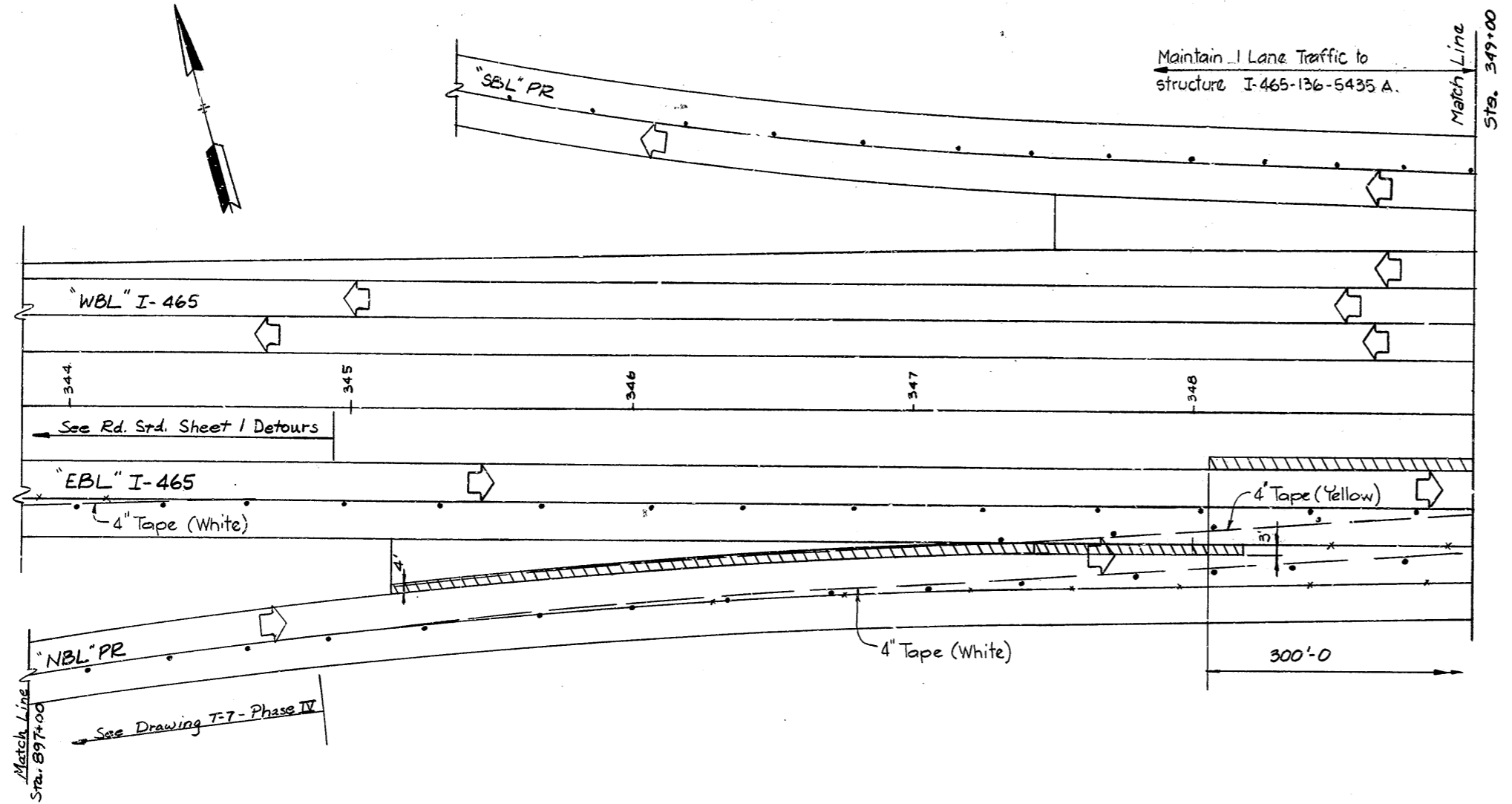
**PHASE IV
TRAFFIC MAINTENANCE DETAILS-II
INDIANA STATE HIGHWAY COMMISSION**

SCALE: 1"=30'-0" DATE: JULY 2, 1981

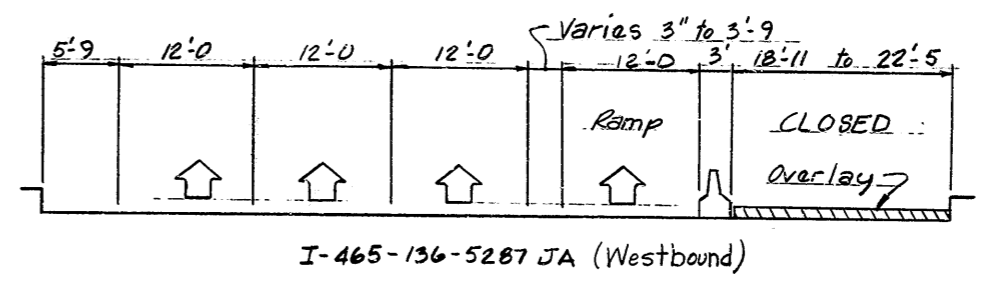
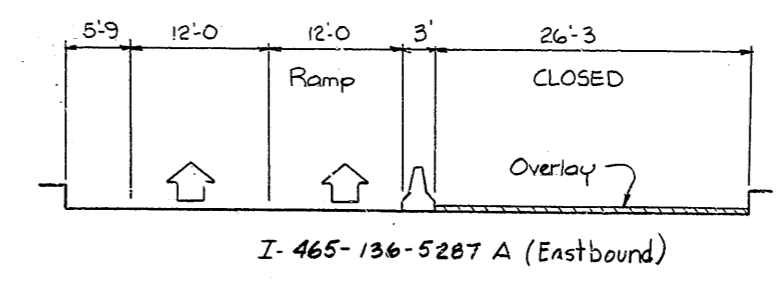
DRAWING: 7-11 OF 12 SHEET: 81 OF 116
PROJECT: I-FRI-465-4(215)134
CONTRACT NO. B-13219
BRIDGE FILE: I-465-136-5287A & 5287JA



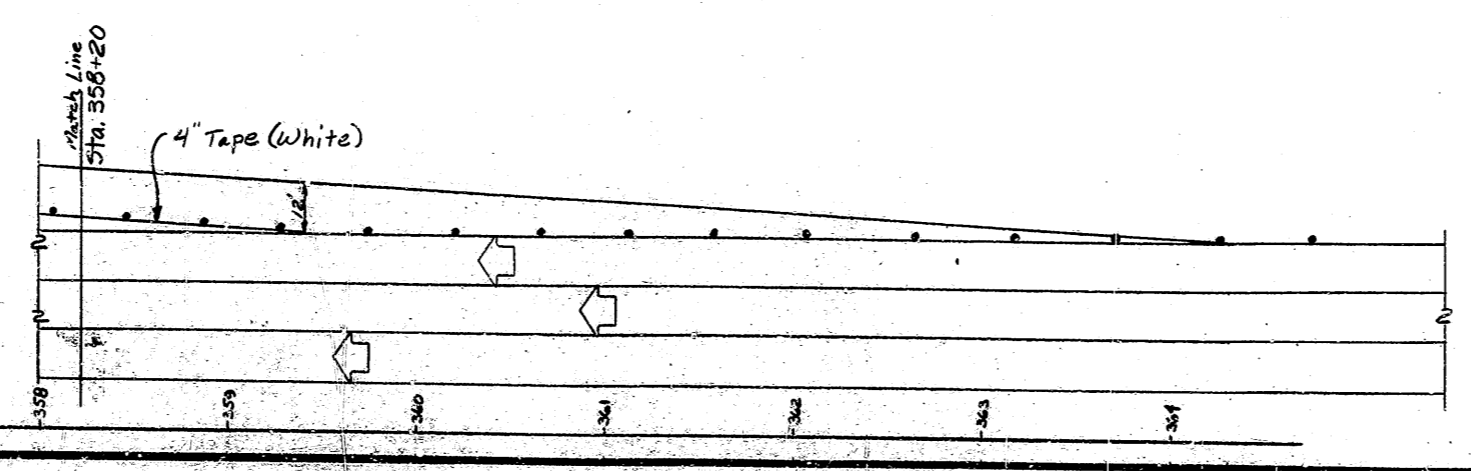
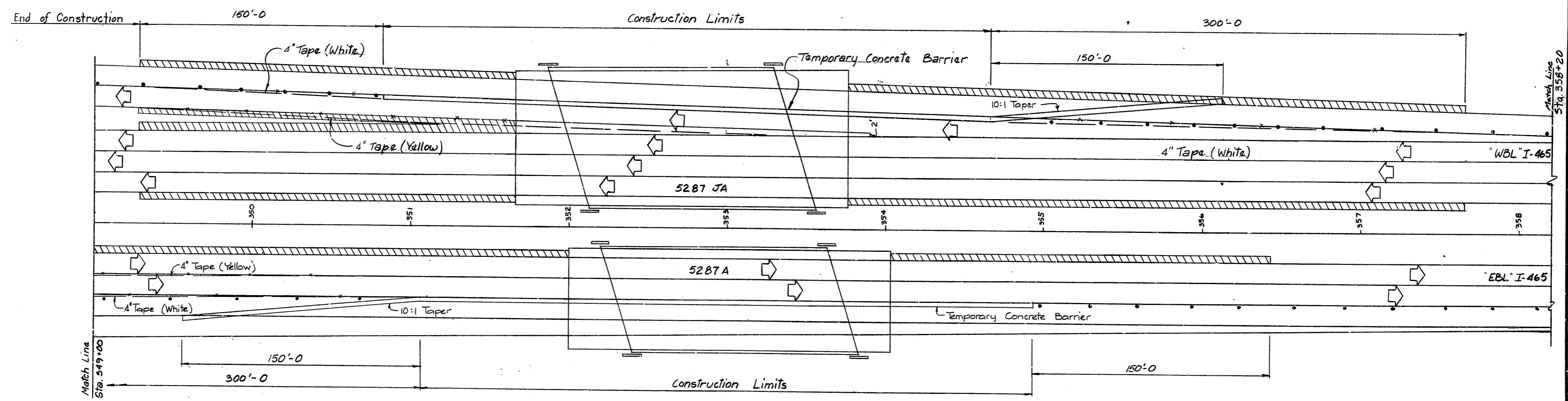
DESIGNED: CKD
DRAWN: RLP 11/80 CKD JAS 4/81
TRACED: CKD



Phase III of structure I-465-136-5287 JA to be concurrent with Phase IV at structure I-465-136-5435 A. See Drwg T-3 for Details.



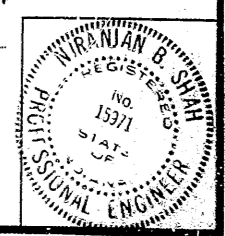
See Drawing T-2 for Notes and Legends.
No Traffic Control on either Structure during Phase I.



**PHASE IV
TRAFFIC MAINTENANCE DETAILS-12
INDIANA STATE HIGHWAY COMMISSION**

SCALE: - 1" = 30'-0"
DATE: - JULY 2, 1981

DRAWING: T-12 OF 12 SHEET: 02 OF 116
PROJECT: I-FRI-465-4(215)134
CONTRACT NO. B-13219
BRIDGE FILE: I-465-136-5287A & 5287JA



DESIGNED	CKD
DRAWN	RLP
TRACED	CKD

Rev: 8-7-81; Phase IV; Note added; Ramp control note;
Tape note added.

END STP