

R/W INDEX					
PROJECT	STRUCTURE	TYPE	SPAN	OVER	STATION
ST-179-1(2)	9-48-6702	CONT REINF CONC SLAB	2 SPANS 22'-0" 22'-0" SKEW 25° RT.	LITTLE PIPE CREEK	STA. 24+20" BrA"
SHEET NO.	SHEET DESIGNATION	SUBJECT			F.H.W.A. APPROVAL
1	ONE SHEET	TITLE AND INDEX			
2	ONE SHEET	PARCEL LISTING FOR LAND ACQUISITION			
3	ONE SHEET	TYPICAL CROSS SECTIONS			
4	ONE SHEET	PLAT 1			
5-8	FOUR SHEET	PLAN & PROFILE			
9	ONE SHEET	DETAILS			
10	ONE SHEET	SPOT ELEVATIONS			
11	ONE SHEET	CONTOUR & GRADING PLAN			
12	ONE SHEET	SIGNALIZATION			
13	ONE SHEET	MISC. TABLE			
14	C1	LAYOUT			
15	C2	GENERAL PLAN			

STATE OF INDIANA
INDIANA STATE HIGHWAY COMMISSION

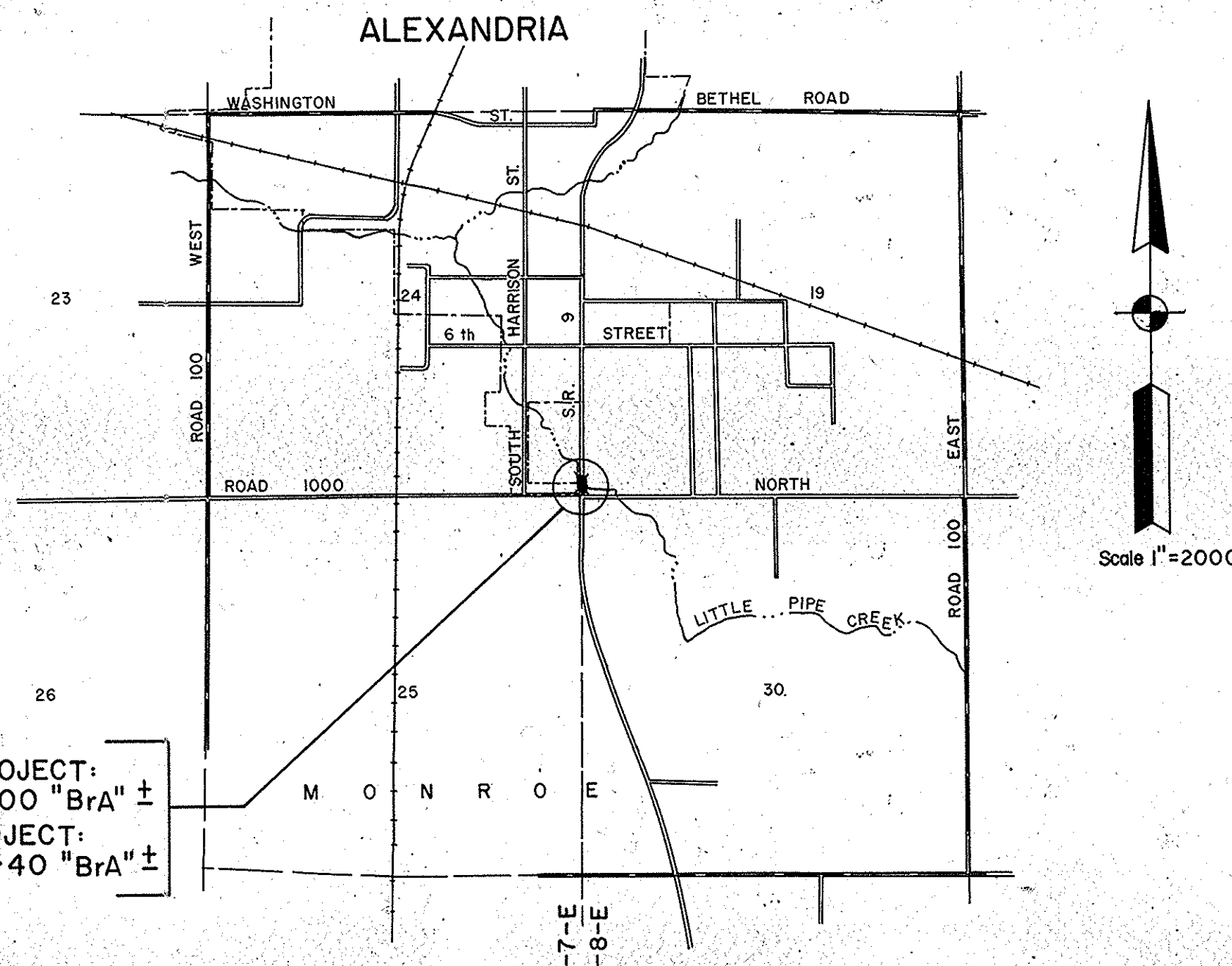
**RIGHT OF WAY PLANS
FOR SPANS OVER 20 FEET
ON
STATE ROAD NO. 9
PROJECT NO. ST-179-1**

~~1~~ R/W
~~2~~ R/W

BEGINNING AT A POINT APPROXIMATELY 336.00 FEET SOUTH OF THE NORTHWEST CORNER OF SECTION 30, TOWNSHIP 21 NORTH, RANGE 8 EAST, MONROE TOWNSHIP, MADISON COUNTY THENCE EXTENDING NORTH A DISTANCE OF 850.00 FEET TO A POINT APPROXIMATELY 614.00 FEET NORTH OF THE SOUTHWEST CORNER SECTION 19, TOWNSHIP 21 NORTH, RANGE 8 EAST, MONROE TOWNSHIP, MADISON COUNTY.

BRIDGE LENGTH: 0.0086 MI.
ROADWAY LENGTH: 0.1505 MI.
TOTAL LENGTH: 0.1590 MI.
MAX. GRADE: 3.50 %

TRAFFIC DATA		S.R.#9
A.D.T. (1978)		11,760 V.P.D.
A.D.T. (1998 PROJECTED)		16,655 V.P.D.
D.H.V. (1998 PROJECTED)		1,666 V.P.D.
TRUCKS		D.H.V. 6% A.D.T. 11%
DESIGN SPEED		55 M.P.H.
ACCESS CONTROL		NONE



BEGIN PROJECT: STA. 20+00 "BrA" ±
END PROJECT: STA. 28+40 "BrA" ±

PREPARED BY
REID, QUEBE, ALLISON, WILCOX AND ASSOC., INC. ENGINEERS
INDIANAPOLIS, INDIANA

INDEX CONTINUED		STANDARD DRAWINGS	SUBJECT	F.H.W.A. APPROVAL	ADDITIONAL APPROVAL
SHEET NO.	SHEET DESIGNATION				
	BRIDGE STD. BR1	ALUMINUM BRIDGE RAILING			
	BRIDGE STD. BR2	ALUMINUM BRIDGE RAILING DETAILS			
	BRIDGE STD. BR3	STEEL BRIDGE RAILING			
	BRIDGE STD. BR4	STEEL BRIDGE RAILING DETAILS			
	BRIDGE STD. BR5	RAILING CONNECTION DETAILS			
	BRIDGE STD. BR6	RAILING CONNECTION DETAILS			
	BRIDGE STD. C1	MISCELLANEOUS DETAILS			
	BRIDGE STD. C2	MISCELLANEOUS DETAILS			
	BRIDGE STD. C3	MISCELLANEOUS DETAILS			
	BRIDGE STD. C4	MISCELLANEOUS DETAILS			
	BRIDGE STD. D	CASTING DETAILS ROADWAY DRAINS			
	BRIDGE STD.				
	BRIDGE STD. PB	PRESTRESSED CONCRETE TYPE I-BEAMS			
	BRIDGE STD. PB	PRESTRESSED CONCRETE TYPE I-BEAMS			
	BRIDGE STD. PB6	PRESTRESSED BOX BEAMS			
	BRIDGE STD. PB	PRESTRESSED COMPOSITE BOX BEAMS WIDE			
	BRIDGE STD. PB	PRESTRESSED COMPOSITE BOX BEAMS WIDE			
	BRIDGE STD. PB10	TOLERANCES FOR FABRICATION OF PRESTRESSED BEAMS			
	BRIDGE STD. PB11	ELASTOMERIC BEARING PAD DETAILS			
	BRIDGE STD.				
	BRIDGE STD.				
	BRIDGE STD. R2A	BRIDGE LIGHTING DETAILS			
	BRIDGE STD. R2B				
	BRIDGE STD. S1	MISCELLANEOUS DETAILS			
	BRIDGE STD. SH1	STEEL SHOE DETAILS			
	BRIDGE STD. T SHEET A	STANDARD TEMPORARY BRIDGE			
	BRIDGE STD. T SHEET B	STANDARD TEMPORARY BRIDGE			
	BRIDGE STD.				
	BRIDGE STD.				
	BRIDGE STD.				
	BRIDGE STD.				
	ROAD STD. SHEET A	STANDARD PAVEMENT JOINTS			
	ROAD STD. SHEET B	STANDARD PAVEMENT JOINTS			
	ROAD STD. SHEET MA	MISCELLANEOUS STANDARDS			
	ROAD STD. SHEET MA	MISCELLANEOUS STANDARDS			
	ROAD STD. SHEET MB	MISCELLANEOUS STANDARDS			
	ROAD STD. SHEET MB2	MISCELLANEOUS STANDARDS			
	ROAD STD. SHEET	MISCELLANEOUS STANDARDS			
	ROAD STD. SHEET MC	MISCELLANEOUS STANDARDS			
	ROAD STD. SHEET MC1	MISCELLANEOUS STANDARDS			
	ROAD STD. SHEET MD	MISCELLANEOUS STANDARDS			
	ROAD STD. SHEET MD	MISCELLANEOUS STANDARDS			
	ROAD STD. SHEET MD	MISCELLANEOUS STANDARDS			
	ROAD STD. SHEET MD	MISCELLANEOUS STANDARDS			
	ROAD STD. SHEET ME	MISCELLANEOUS STANDARDS			
	ROAD STD. SHEET ME	MISCELLANEOUS STANDARDS			
	ROAD STD. SHEET	MISCELLANEOUS STANDARDS			
	ROAD STD. SHEET MH	MISCELLANEOUS STANDARDS			
	ROAD STD. SHEET MH	MISCELLANEOUS STANDARDS			
	ROAD STD. SHEET MI	MISCELLANEOUS STANDARDS			
	ROAD STD. SHEET	MISCELLANEOUS STANDARDS			
	ROAD STD. SHEET	MISCELLANEOUS STANDARDS			
	ROAD STD. SHEET MN	MISCELLANEOUS STANDARDS			
	ROAD STD. SHEET	MISCELLANEOUS STANDARDS			
	ROAD STD. SHEET MP	MISCELLANEOUS STANDARDS			
	ROAD STD. SHEET	MISCELLANEOUS STANDARDS			
	ROAD STD. SHEET MQ	MISCELLANEOUS STANDARDS			
	ROAD STD. SHEET MR	MISCELLANEOUS STANDARDS			
	ROAD STD. SHEET				
	ROAD STD.	STANDARD REINF. CONCRETE BOX CULVERTS			
	ROAD STD.	STANDARD REINF. CONCRETE CULVERTS			
	ROAD STD. SHEET GR	GUARD RAIL CLASS			
	ROAD STD. SHEET GR	GUARD RAIL CLASS			
	ROAD STD. SHEET GR	GUARD RAIL CLASS			
	ROAD STD. SHEET GR5	ALUMINUM GUARD RAIL DETAILS			
	ROAD STD. SHEET GR6	STEEL TUBE GUARD RAIL DETAILS			
	ROAD STD. SHEET GR				
	ROAD STD. SHEET GR10	GUARD RAIL BURIED ENDS			
	ROAD STD.				
	ROAD STD. SHEET 9	TRAFFIC SIGN DETAILS			
	ROAD STD. SHEET 1A DETOURS	STANDARD DETOUR SIGNS			
	ROAD STD. SHEET 1A DETOURS	STANDARD DETOUR SIGNS			
	ROAD STD. SHEET 1B DETOURS	STANDARD DETOUR SIGNS			
	ROAD STD. SHEET 2 DETOURS	STANDARD DETOUR SIGNS			
	ROAD STD. SHEET 2A DETOURS	STANDARD DETOUR SIGNS			
	ROAD STD. SHEET 3 DETOURS	STANDARD DETOUR SIGNS			
	ROAD STD. SHEET 3A DETOURS	STANDARD DETOUR SIGNS			
	ROAD STD. SHEET 4 DETOURS	STANDARD DETOUR SIGNS			
	ROAD STD. SHEET 5 DETOURS	STANDARD DETOUR SIGNS			
	ROAD STD. SHEET 5A DETOURS	STANDARD DETOUR SIGNS			

RECOMMENDED FOR APPROVAL 3-12-81
[Signature]
CHIEF, DIVISION OF LAND ACQUISITION

RECOMMENDED FOR APPROVAL
ASSISTANT ENGINEER OF BRIDGE DESIGN,
INDIANA STATE HIGHWAY COMMISSION

APPROVED 3-20-81
[Signature]
CHIEF HIGHWAY ENGINEER—INDIANA STATE HIGHWAY COMMISSION
RIGHT OF WAY PLANS ONLY

FEDERAL HIGHWAY ADMINISTRATION
DEPARTMENT OF TRANSPORTATION
APPROVED: _____
DIVISION ADMINISTRATOR _____ DATE _____

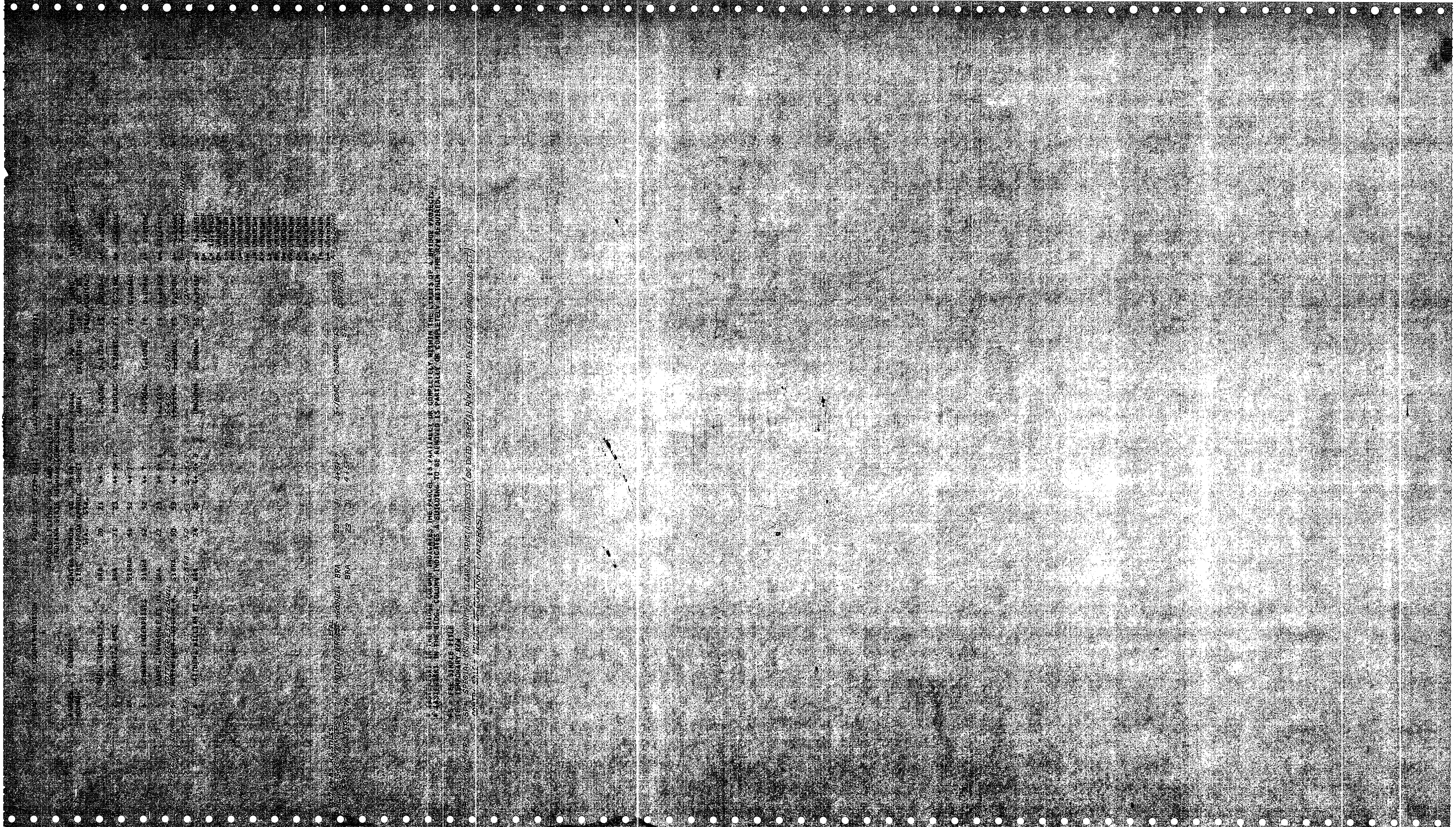
REVISIONS		
DATE	SHEET NO.	REVISION
3-12-81	5, 6, 7 & 8	REV. B'S AND R/W
2-23-82	3, 4, 5 & 7	CONTRACT SALE SHOWN ON PARCEL 5
5-13-83	2, 4, 5, 6 & 7	ADDED PARCEL 7
7-14-83	2, 4, 5, 6 & 7	NAME CHANGE PARCEL 7

REVISIONS		
DATE	SHEET NO.	REVISION

RECOMMENDED FOR APPROVAL
ENGINEER OF BRIDGE DESIGN, INDIANA STATE HIGHWAY COMMISSION

INDIANA STATE HIGHWAY COMMISSION
STANDARD SPECIFICATIONS DATED 1978
TO BE USED WITH THESE PLANS.

BRIDGE FILE: 9-48-6702

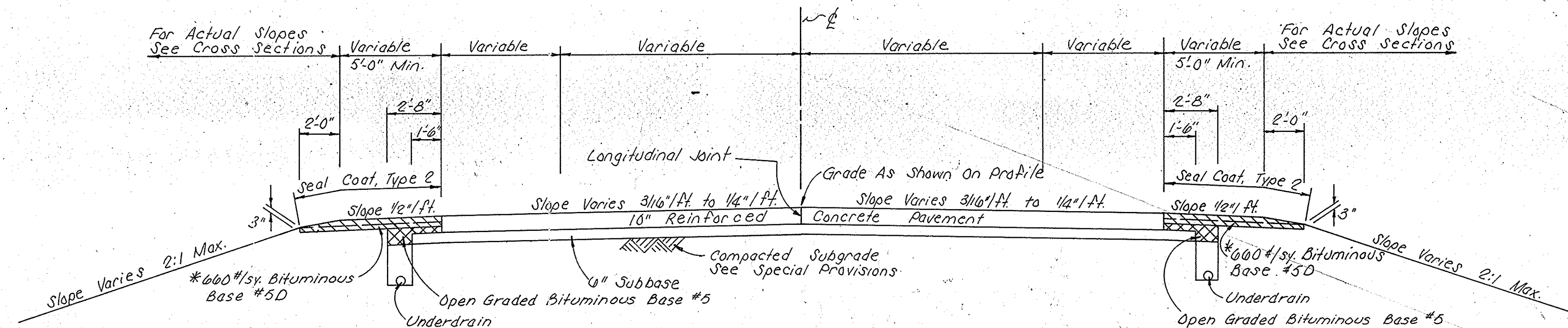


STILLS
 MATTHEW J. HARRIS - ORIGINAL BWA 29 31 41897
 BWA 22 31 41577

IF THE BLANK COLUMN INDICATES THE CASE IS UNABLE TO COMPLETELY REPRODUCE THE PRINTS IN THE MARGIN, THE PRINTS IN THE MARGIN SHOULD BE REPRODUCED IN THE BLANK COLUMN. INDICATES A PRINTING OR REPRODUCTION ERROR. PARTICULAR ATTENTION SHOULD BE GIVEN TO THE MARGIN PRINTS IN THESE CASES.

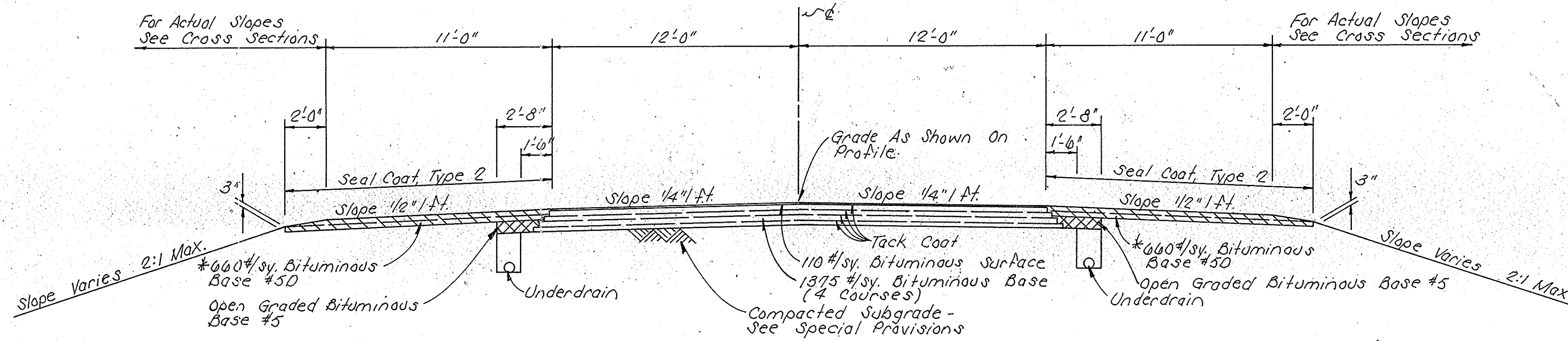
SEE SPECIAL AGENT'S REPORT OF DEED - SPECIAL RAY GRANT RELEASE OF EVIDENCE (FBI)
 SPECIAL AGENT'S REPORT OF DEED - SPECIAL RAY GRANT RELEASE OF EVIDENCE (FBI)

FEDERAL ROAD REGION NO.	STATE	PROJECT NO.	FISCAL YEAR	SHEET NO.	TOTAL SHEETS
5	IND.	ST-179-1(e)		3	15



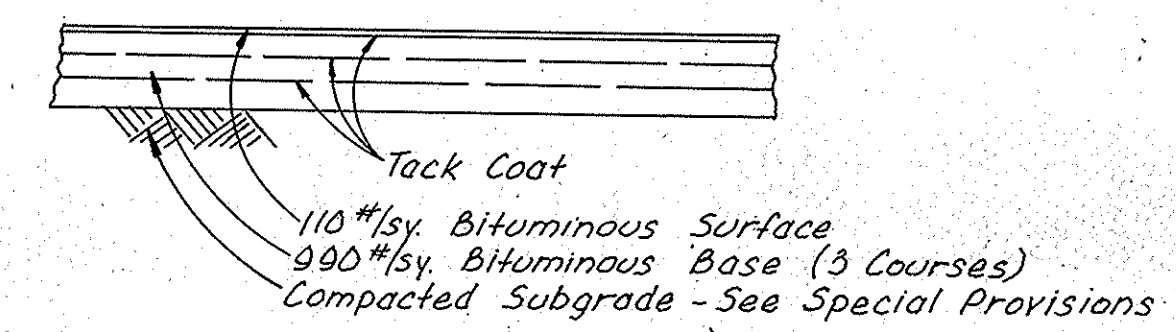
TANGENT SECTION
 STA. 23+76.75 TO STA. 23+97.25 "BrA"
 STA. 24+42.75 TO STA. 24+73.12 "BrA"

- * 10" FULL DEPTH SHOULDER
 Sta. 21+25.24 To Sta. 22+70 "BrA" Rt.
 Sta. 22+45 To Sta. 22+90 "BrA" Lt.
 Sta. 24+34.5 To Sta. 24+40 "BrA" Rt.
- * 13 1/2" FULL DEPTH SHOULDER
 Sta. 24+73 To Sta. 25+38.70 "BrA" Lt.

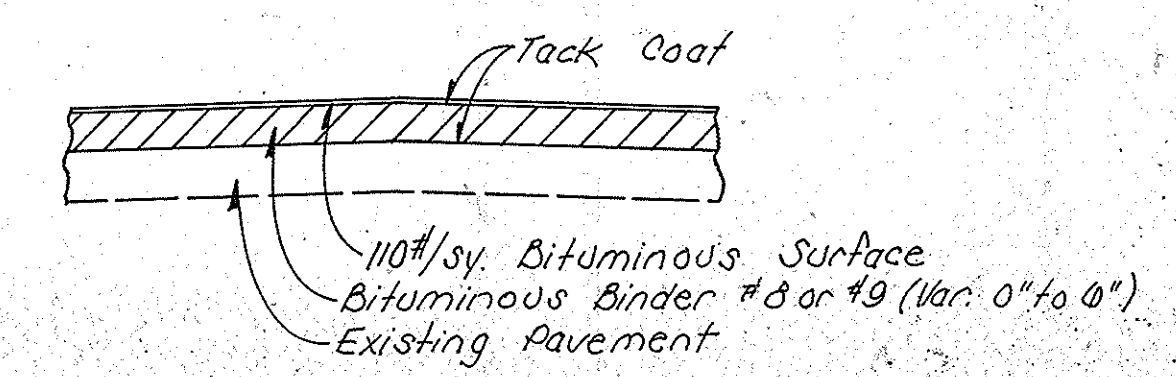


TANGENT SECTION
 STA. 20+00 TO STA. 23+76.75 "BrA"
 STA. 24+73.12 TO STA. 27+70 "BrA"

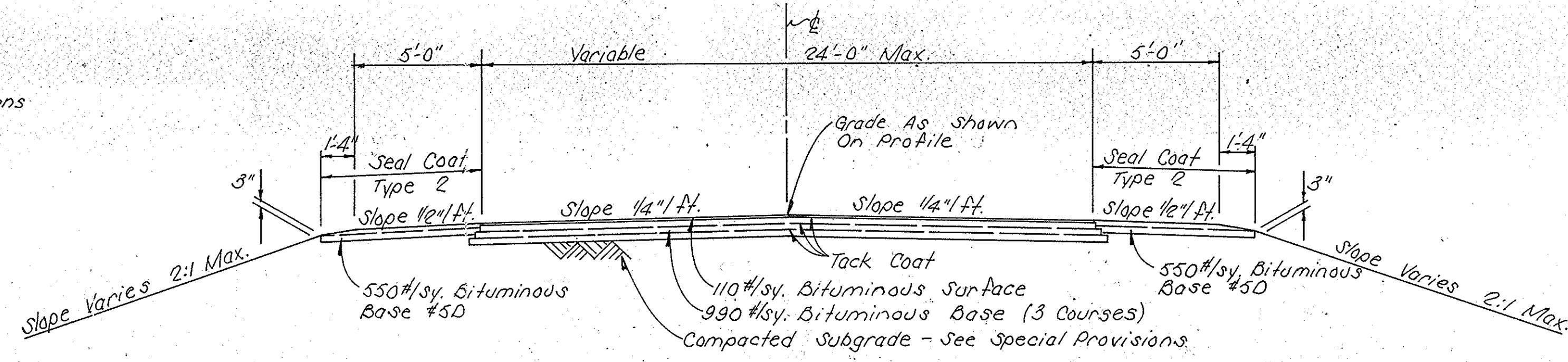
- NOTES:
1. BITUMINOUS SURFACE SHALL BE HOT ASPHALT CONCRETE SURFACE, TYPE "11B".
 2. FOR UNDERDRAIN DETAILS, SEE MISC. STANDARD SHEET "MN".



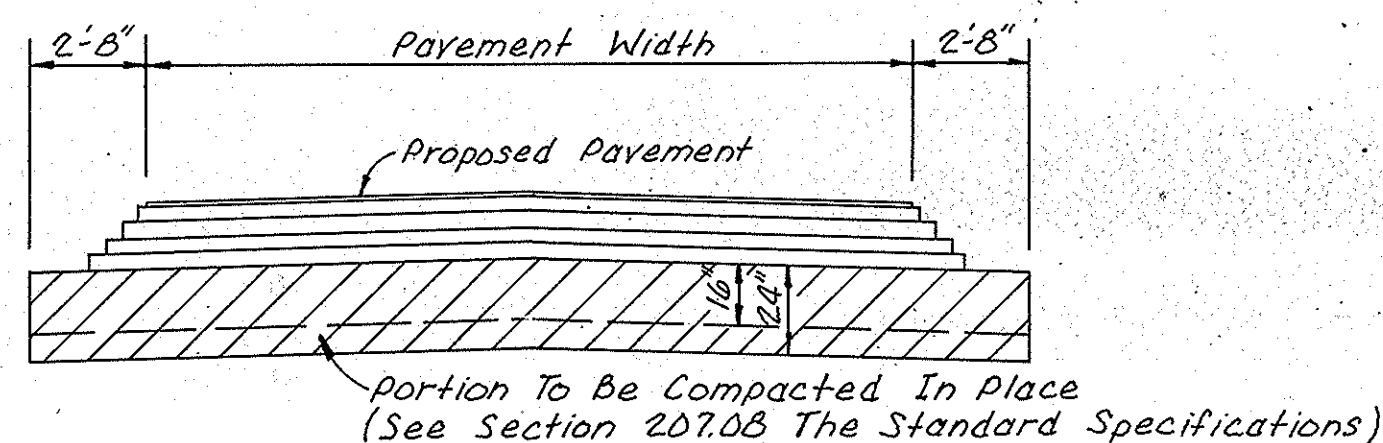
FULL DEPTH SECTION FOR SHOULDERS AND DRIVES
 DRIVES RT. OF STA. 25+85.50 AND STA. 27+86.50 "BrA"



BITUMINOUS RESURFACE
 STA. 27+70 TO STA. 28+40 "BrA"
 STA. 47+64 TO STA. 48+20 "S-2-BrA"
 LONGWOOD DR. RT. OF 47+90 "S-2-BrA"
 STA. 51+80 TO STA. 52+22 "S-1-BrA"
 DRIVE RT. OF STA. 51+60 "S-1-BrA"



TANGENT SECTION
 STA. 48+20 TO STA. 49+88 "S-2-BrA"
 STA. 50+12 TO STA. 51+80 "S-1-BrA"



TYPICAL SECTION FOR SUBGRADE TREATMENT
 NOT TO SCALE

TYPICAL CROSS SECTIONS

SCALE: 1/4" = 1'-0"

RECOMMENDED FOR APPROVAL _____

ENGINEER OF ROAD DESIGN INDIANA STATE HIGHWAY COMMISSION

PROJECT NO.	LINE	SHEET NO.	TOTAL SHEETS	FILE
ST-179-1(e)		3	15	

REV. 5-13-83, ADDED PARCEL 7, M.W. MYERS

SEC. 24, T.21N., R.7E.
MADISON CO.

SEC. 25, T.21N., R.7-E
MONROE TWP.
MADISON COUNTY

A PART
YULE ESTATES TO
TOWN OF ALEXANDRIA

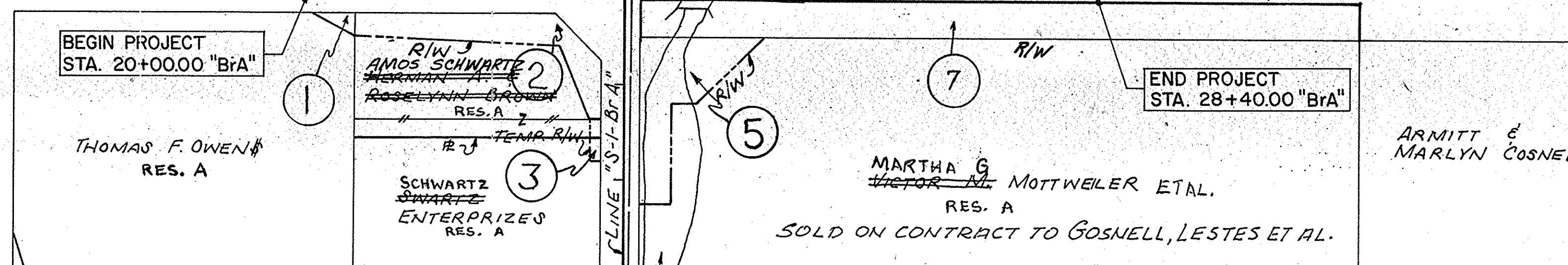
WEDGEWOOD NORTH DR.

Lot #12	Lot #17	Lot #18
	THOMAS W. & JANICE L. SHIRK	JAMES L. & LINDA L. SMALL
Lot #14	Lot #15	Lot #16
	JOHN C. & MARY L. MEFARREN	RICHARD O. & ROBERTA SCHUYLER

LONGWOOD DR.

Lot #6	Lot #5	Lot #4	Lot #3	Lot #2	Lot #1
MARVIN E. & DONNA J. ETCHISON	JACK W. & DOROTHY M. JOHNSON	LARRY J. & PATRICIA J. MERCER	ALDUS NELSON	(4)	LAWRENCE K. & IDA R. BAKER

SECTION LINE S.R. #9 20 LINE "B-A" 25 30 SECTION LINE

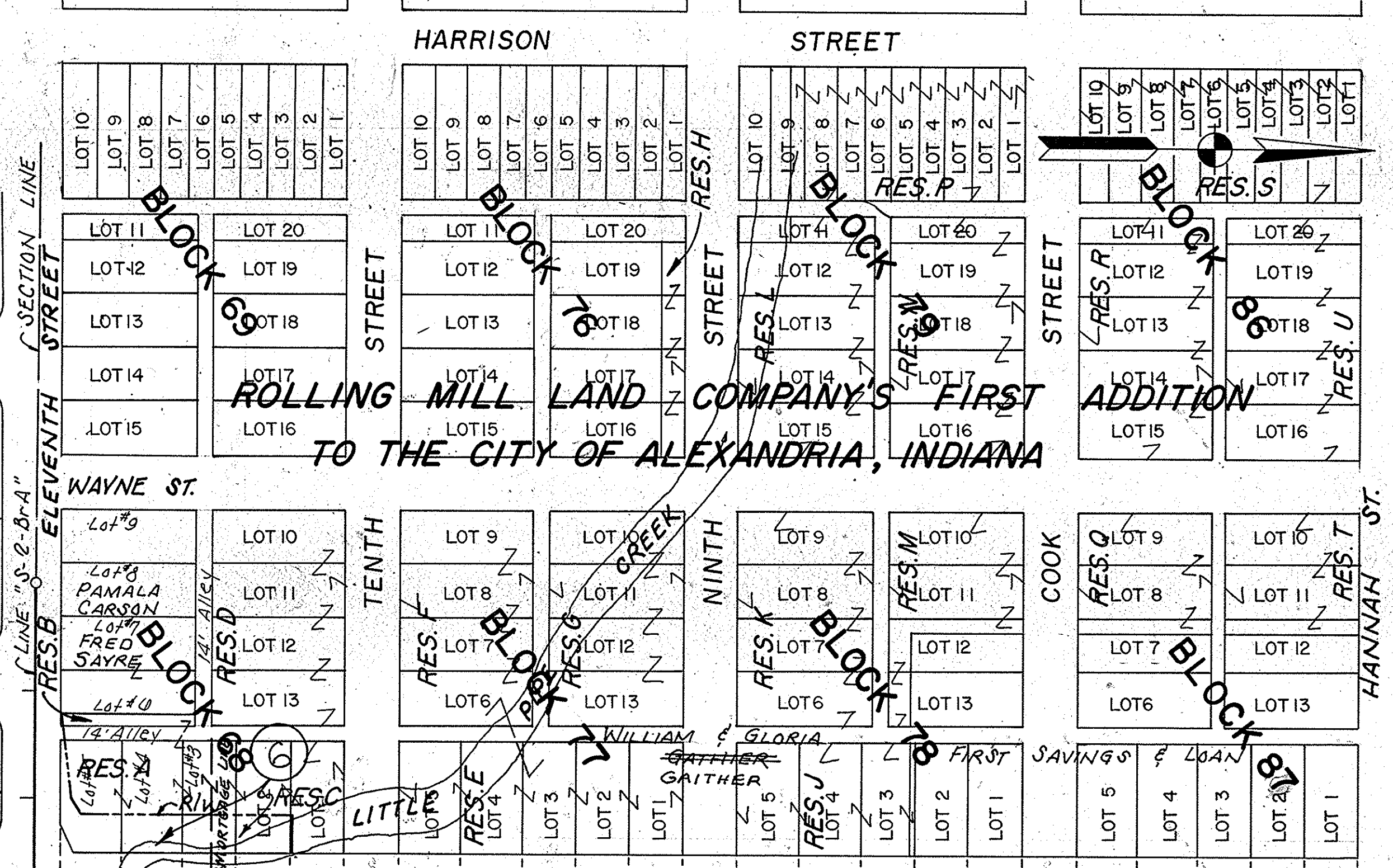


HOWARD & PATRICIA KING

SEC. 30, T.21N., R.8-E
MONROE TWP.
MADISON COUNTY

SEC. 19, T.21N., R.8-E
MONROE TWP.
MADISON COUNTY

MARTHA G. MOTTWEILER ETAL. RES. B



PLAT I
SCALE: 1" = 100'

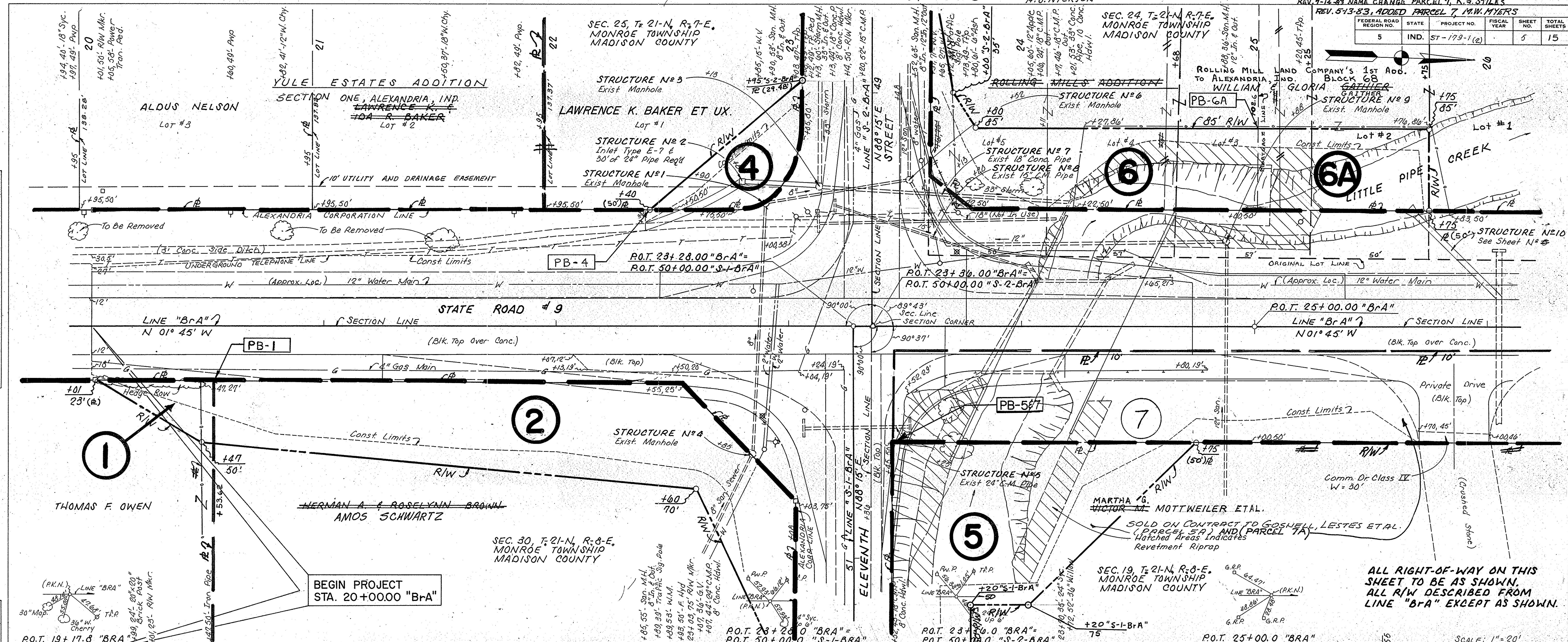
REV. 2-23-82: CONTR. SALE SHOWN ON PARCEL 5. A.J. NICKSON

REV. 3-12-81 CHANGED LOT LINES AND R.F.'S R.F. LEWIS AND R.F.'S REV. 7-14-87 NAME CHANGE PARCEL 7, K.G. STILES REV. 5-13-83 ADDED PARCEL 7, M.W. MYERS

FEDERAL ROAD REGION NO.	STATE	PROJECT NO.	FISCAL YEAR	SHEET NO.	TOTAL SHEETS
5	IND.	ST-179-1(2)		5	15

DATE: 1/14/77
BY: I.S.A.C. R.J.G.
I.S.A.C. R.J.G.
NOTE BOOK: 2235
NO. 2235
STRUCTURE NOTATIONS CHECKED

DATE: 1/14/77
BY: I.S.A.C. J.A.E.
I.S.A.C. J.A.E.
NOTE BOOK: 2235
NO. 2235
STRUCTURE NOTATIONS CHECKED



ALL RIGHT-OF-WAY ON THIS SHEET TO BE AS SHOWN. ALL R/W DESCRIBED FROM LINE "B+A" EXCEPT AS SHOWN.

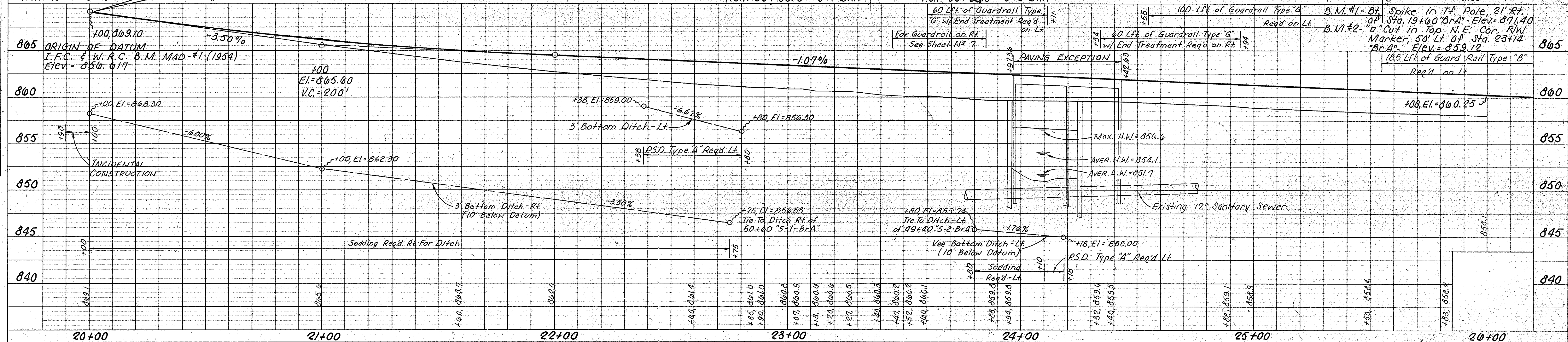
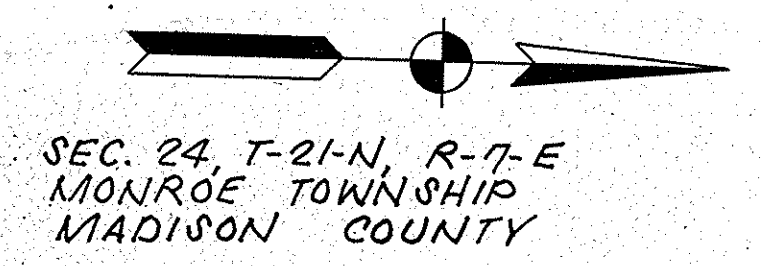
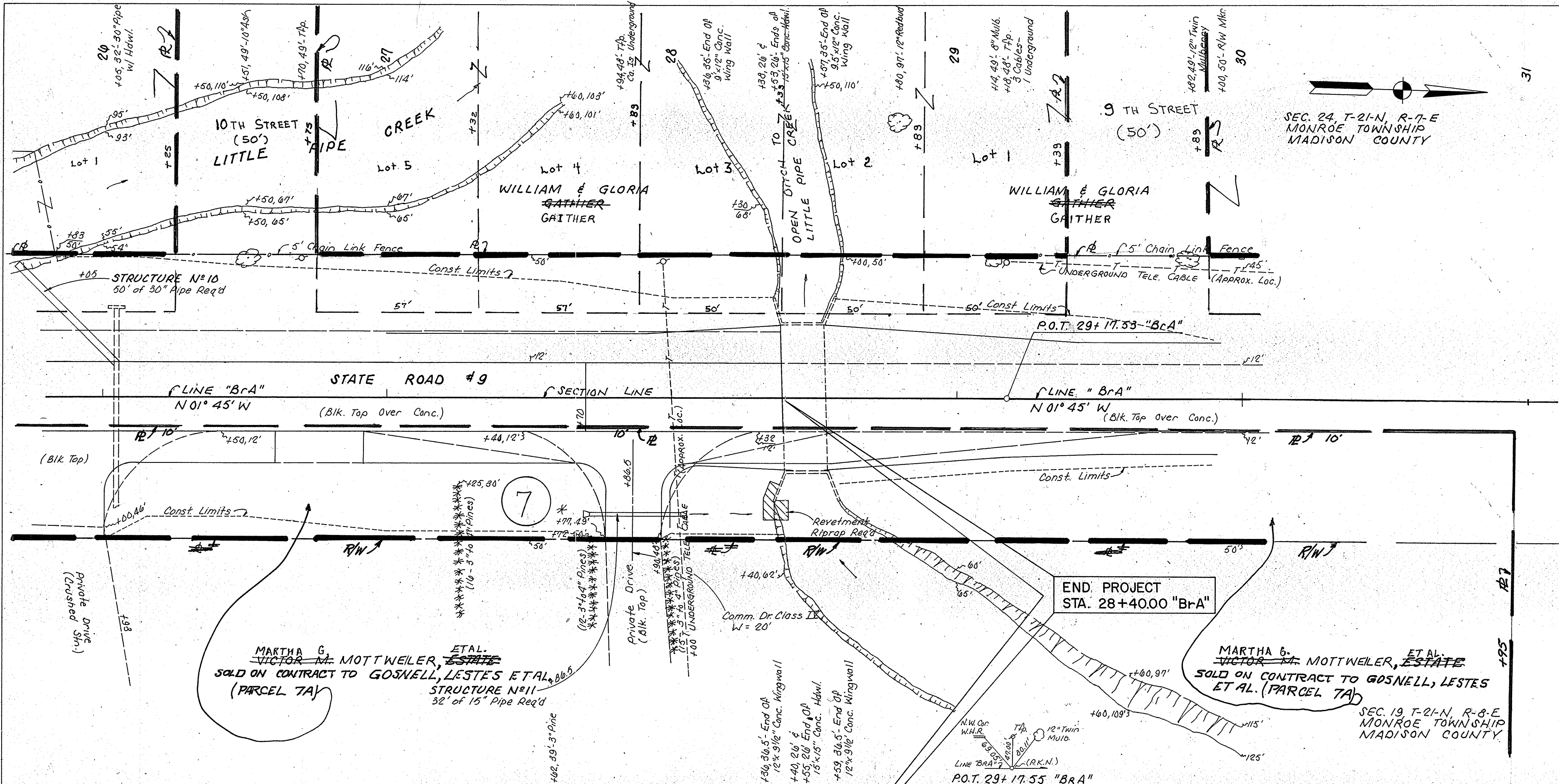


PLATE 3 - PLAN, PROFILE & R.R. STANDARD 1975

PROJECT NO.	LINE	SHEET NO.	TOTAL SHEETS	FILE
ST-179-1(2)	"B+A"	5	15	

FEDERAL ROAD REGION NO.	STATE	PROJECT NO.	FISCAL YEAR	SHEET NO.	TOTAL SHEETS
5	IND.	ST-179-1(2)		6	15

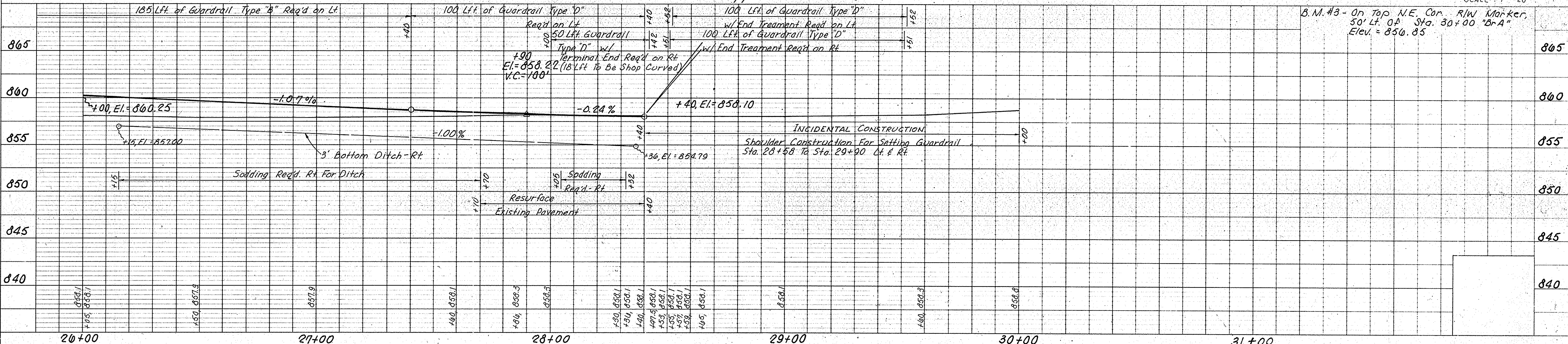
REV. 7-14-83 NAME CHANGE PARCEL 7, K.G. STILES
REV. 5-13-83, ADDED PARCEL 7, M.W. MYERS



SEC. 24, T-21-N, R-7-E
MONROE TOWNSHIP
MADISON COUNTY

PLAN
SURVEYED BY: I.S.H.C.
P.L.C.
R.J.G.
NOTE BOOK: GRADES CHECKED
NO. 82,293 (1) OF WAY CHECKED
NO. 82,293 (2) STRUCTURE NOTATIONS CHECKED

PROFILE
SURVEYED BY: I.S.H.C.
P.L.C.
E.B.P.
NOTE BOOK: GRADES CHECKED
NO. 82,293 (1) OF WAY CHECKED
NO. 82,293 (2) STRUCTURE NOTATIONS CHECKED



ALL RIGHT-OF-WAY ON THIS SHEET TO BE AS SHOWN. ALL R/W DESCRIBED FROM LINE "BrA" EXCEPT AS SHOWN.

MARTHA G. VICTOR MOTTWEILER, ET AL. SELLER
SOLD ON CONTRACT TO GOSNELL, LESTES ET AL. (PARCEL 7A)
SEC. 19 T-21-N, R-8-E
MONROE TOWNSHIP
MADISON COUNTY.

PROJECT NO.	LINE	SHEET NO.	TOTAL SHEETS	FILE
ST-179-1(2)	"BrA"	6	15	

FEDERAL ROAD DISTRICT NO.	STATE	PROJECT NO.	FISCAL YEAR	SHEET NO.	TOTAL SHEETS
5	IND.	ST-179-1 (2)	1980	7	15

REV. 3-12-81 R/W POINTS CHANGED
RT. OF STA. 51+37
R.F. LEWIS

REV. 2-23-82: CONTR. SALE SHOWN ON PARCEL 5.
A.J. NICKSON
REV. 5-13-83, ADDED PARCEL 7, M.W. MYERS

NOTE: FOR STRS. N°# &#
SEE SHEET N°#

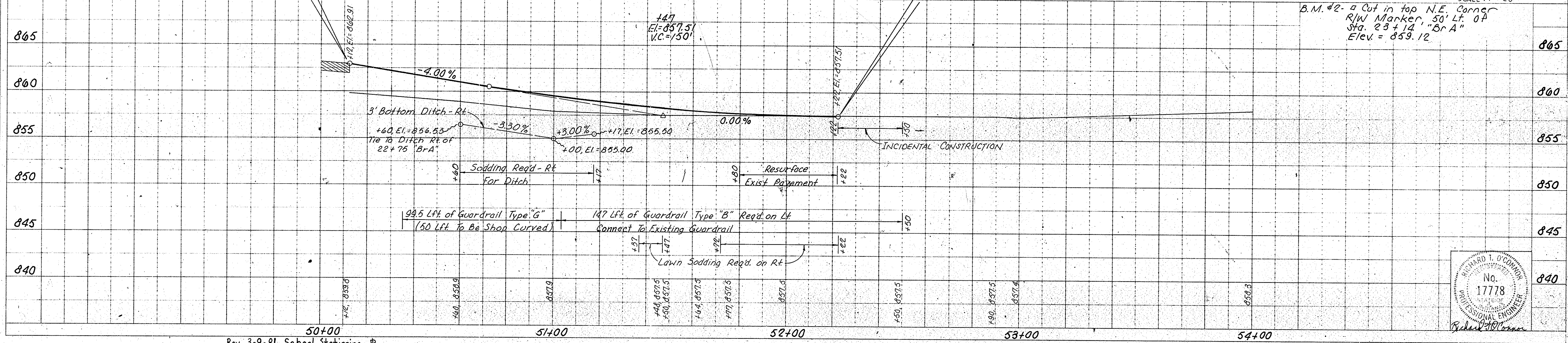
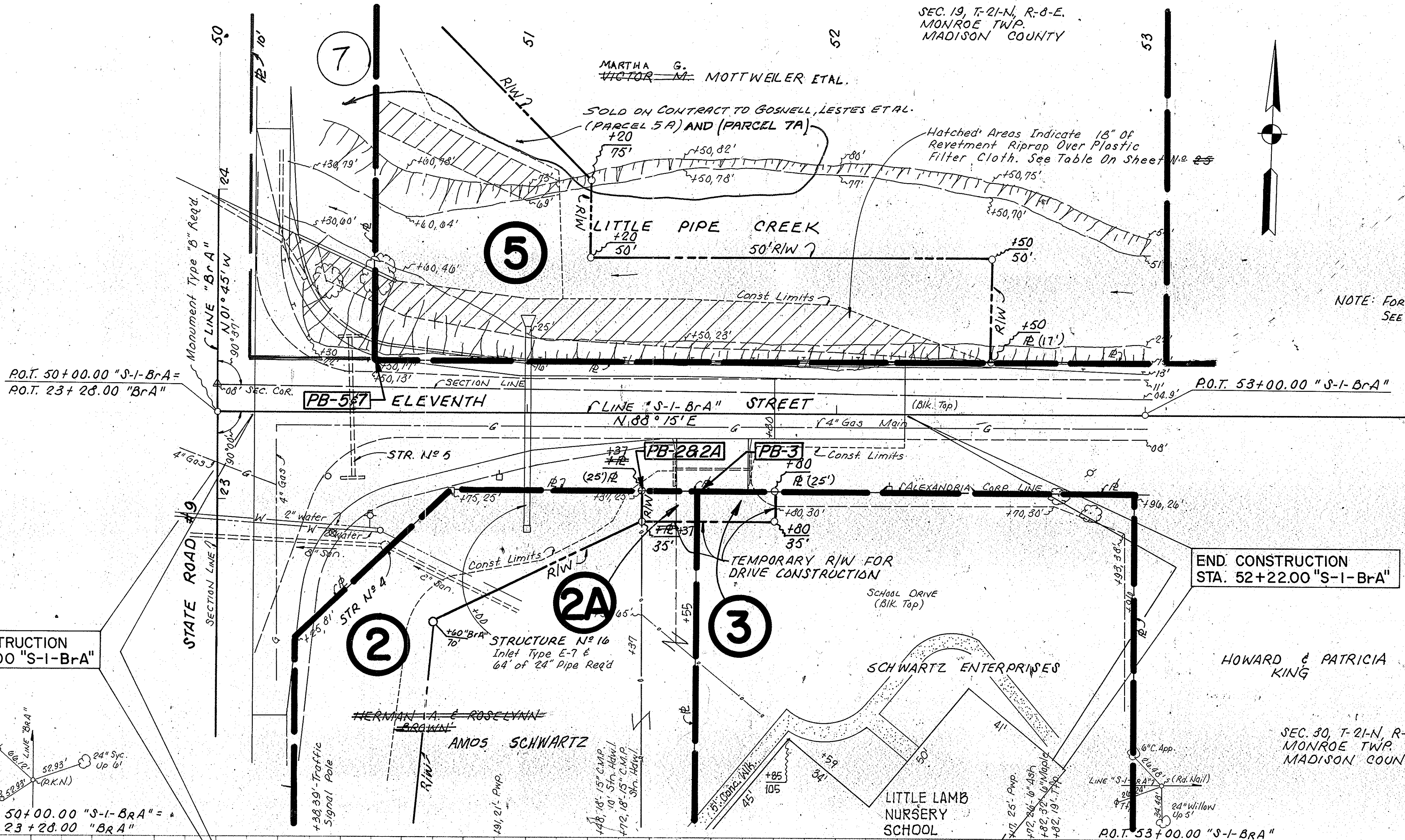
ALL RIGHT-OF-WAY ON THIS SHEET TO BE AS SHOWN. ALL R/W DESCRIBED FROM LINE "S-1-BrA" EXCEPT AS SHOWN.

SCALE: 1" = 20'

B.M. #2 - a Cut in top N.E. Corner R/W Marker, 50' Lt. of Sta. 23+14 "BrA" Elev. = 859.12

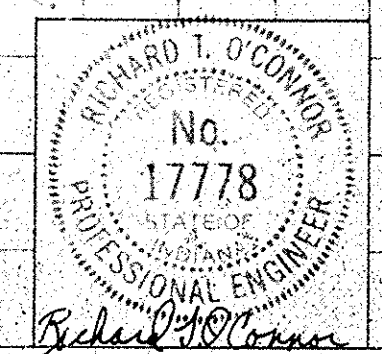
DATE: 11-4-77
I.S.A.C. K.J.G.
PLAN
NOTE BOOK, GRADES CHECKED
NO. 642295

DATE: 11-4-77
I.S.A.C. E.P.
PROFILE
NOTE BOOK, GRADES CHECKED
NO. 642295



Rev. 3-9-81 School Stationing, R

PLATE 3 PLAN, PROFILE & R STANDARD
1975

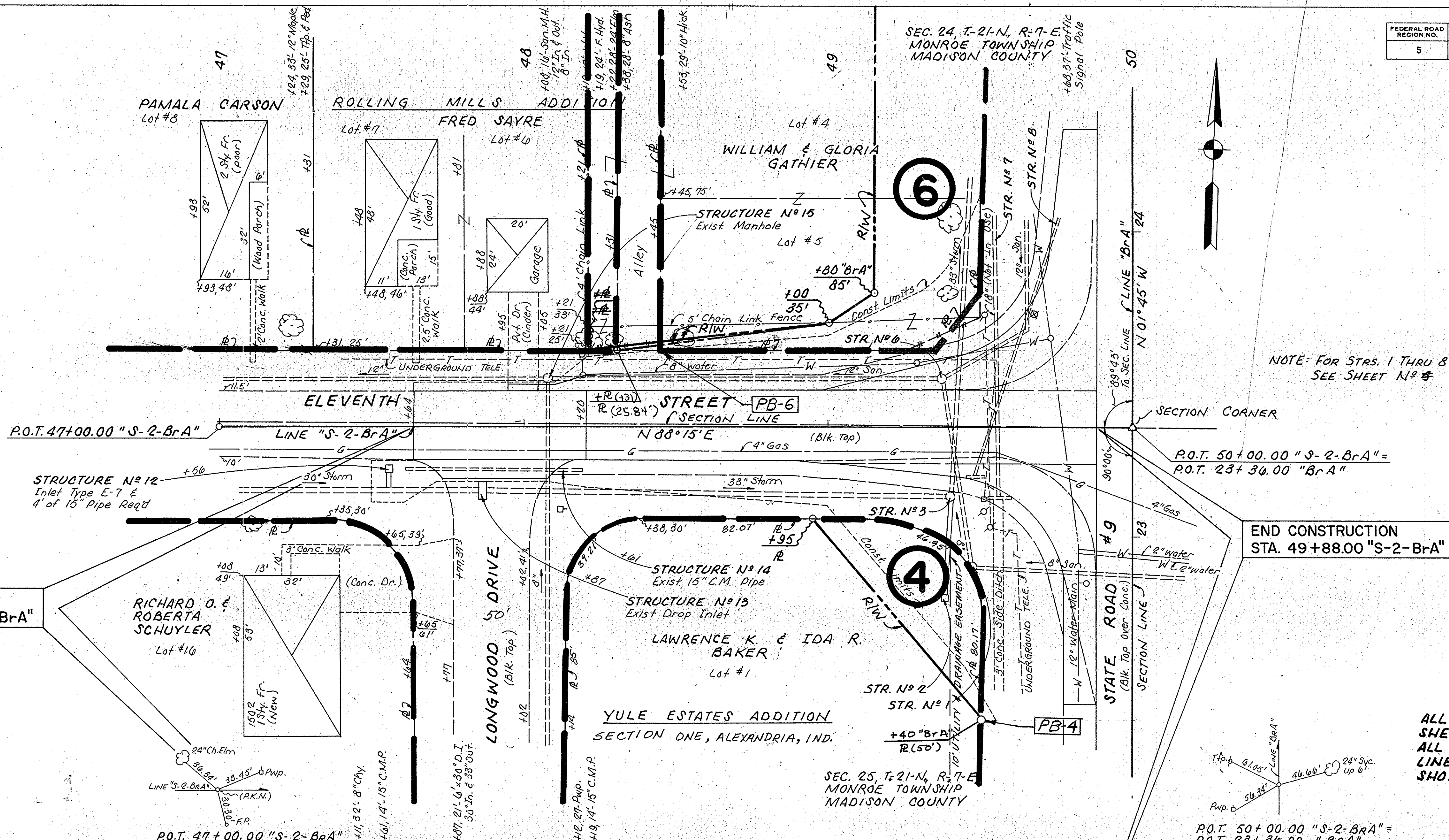


PROJECT NO.	LINE	SHEET NO.	TOTAL SHEETS	FILE
ST-179-1 (2)	"S-1-BrA"	7	15	4-48-6702

FEDERAL ROAD REGION NO.	STATE	PROJECT NO.	FISCAL YEAR	SHEET NO.	TOTAL SHEETS
5	IND.	ST-179-1 (2)		8	15

DATE: 11/14/77
BY: E.S.H.C.
K.C.G.
SUPERVISOR: E.S.H.C.
NOTE BOOK ALIGNMENT CHECKED
NO. 8622295
PLAN

DATE: 11/14/77
BY: E.S.H.C.
K.C.G.
SUPERVISOR: E.S.H.C.
NOTE BOOK GRADES CHECKED
B.M.'S NOTED
NO. 8622295
PROFILE



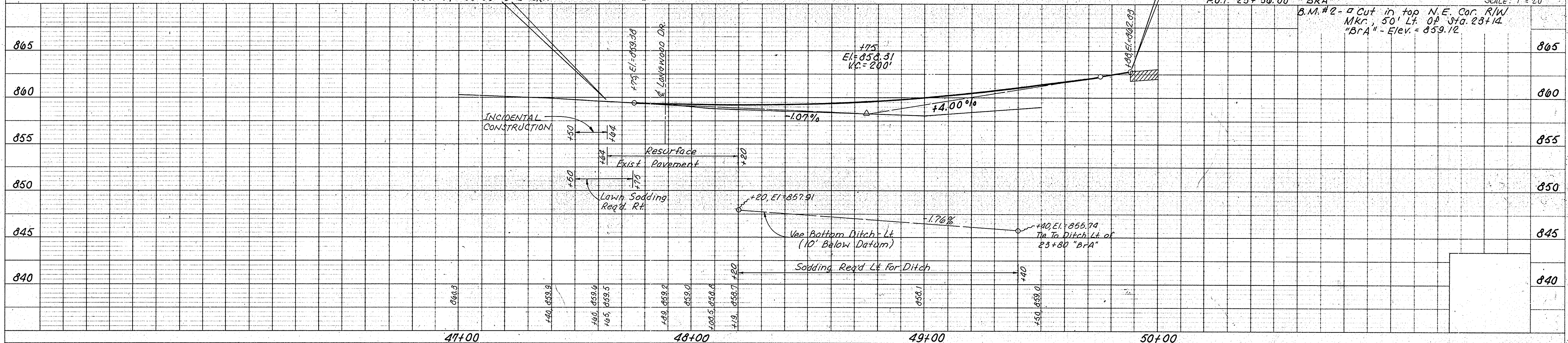
NOTE: FOR STRS. 1 THRU 8 SEE SHEET NO. 8

END CONSTRUCTION STA. 49+88.00 "S-2-BrA"

BEGIN CONSTRUCTION STA. 47+64.00 "S-2-BrA"

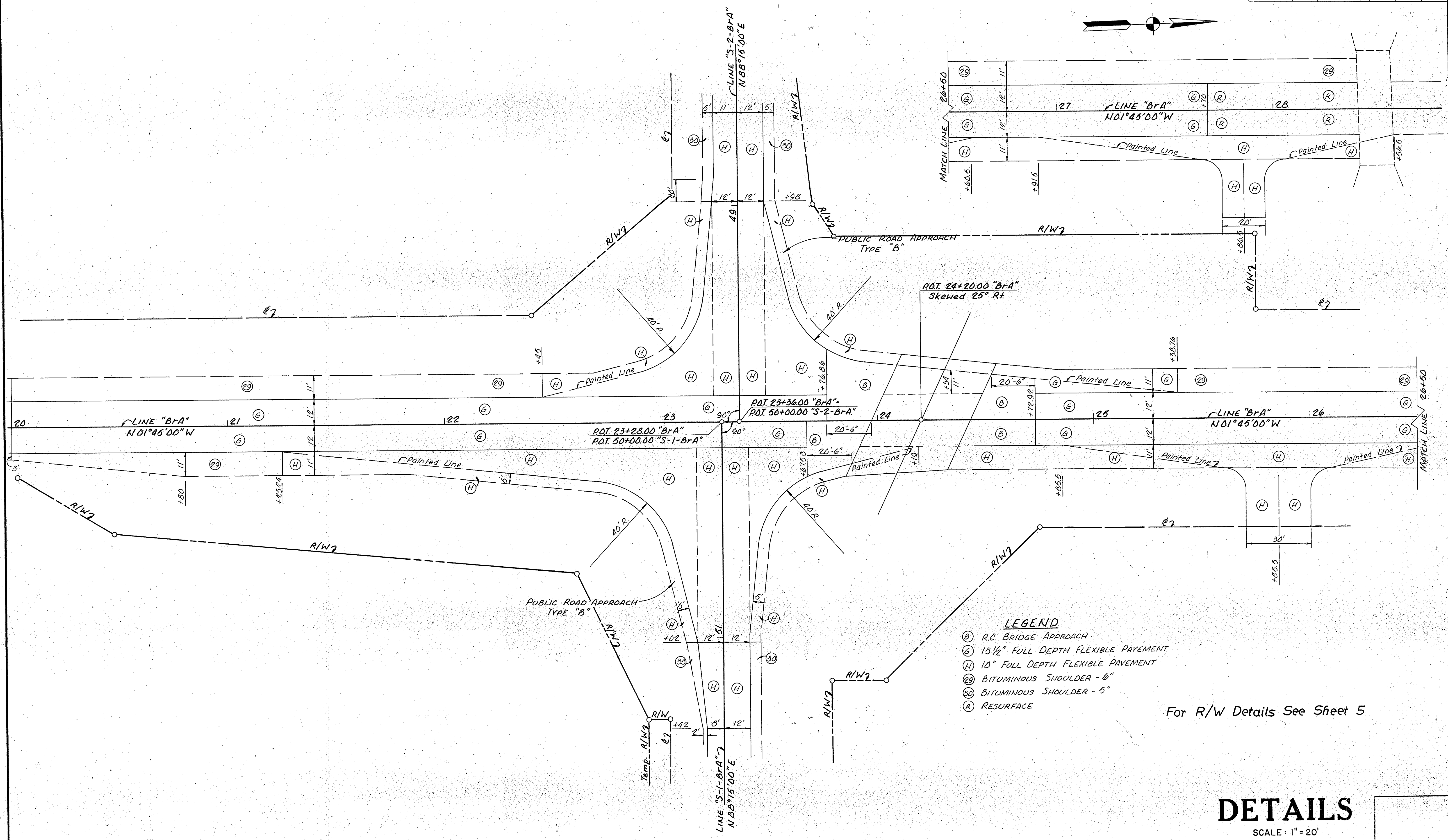
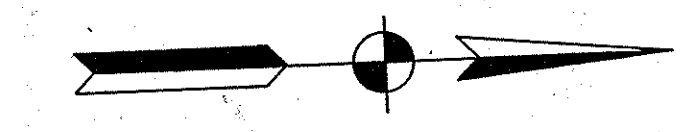
ALL RIGHT-OF-WAY ON THIS SHEET TO BE AS SHOWN. ALL R/W DESCRIBED FROM LINE "S-2-BrA" EXCEPT AS SHOWN.

SCALE: 1" = 20'
B.M. #2 - a cut in top N.E. Cor. R/W Mkr., 50' Lt. of Sta. 23+14 "BrA" - Elev. = 859.12



PROJECT NO.	LINE	SHEET NO.	TOTAL SHEETS	FILE
ST-179-1 (2)	S-2-BrA	8	15	

FEDERAL ROAD REGION NO.	STATE	PROJECT NO.	FISCAL YEAR	SHEET NO.	TOTAL SHEETS
5	IND.	ST-179-1(2)		9	15



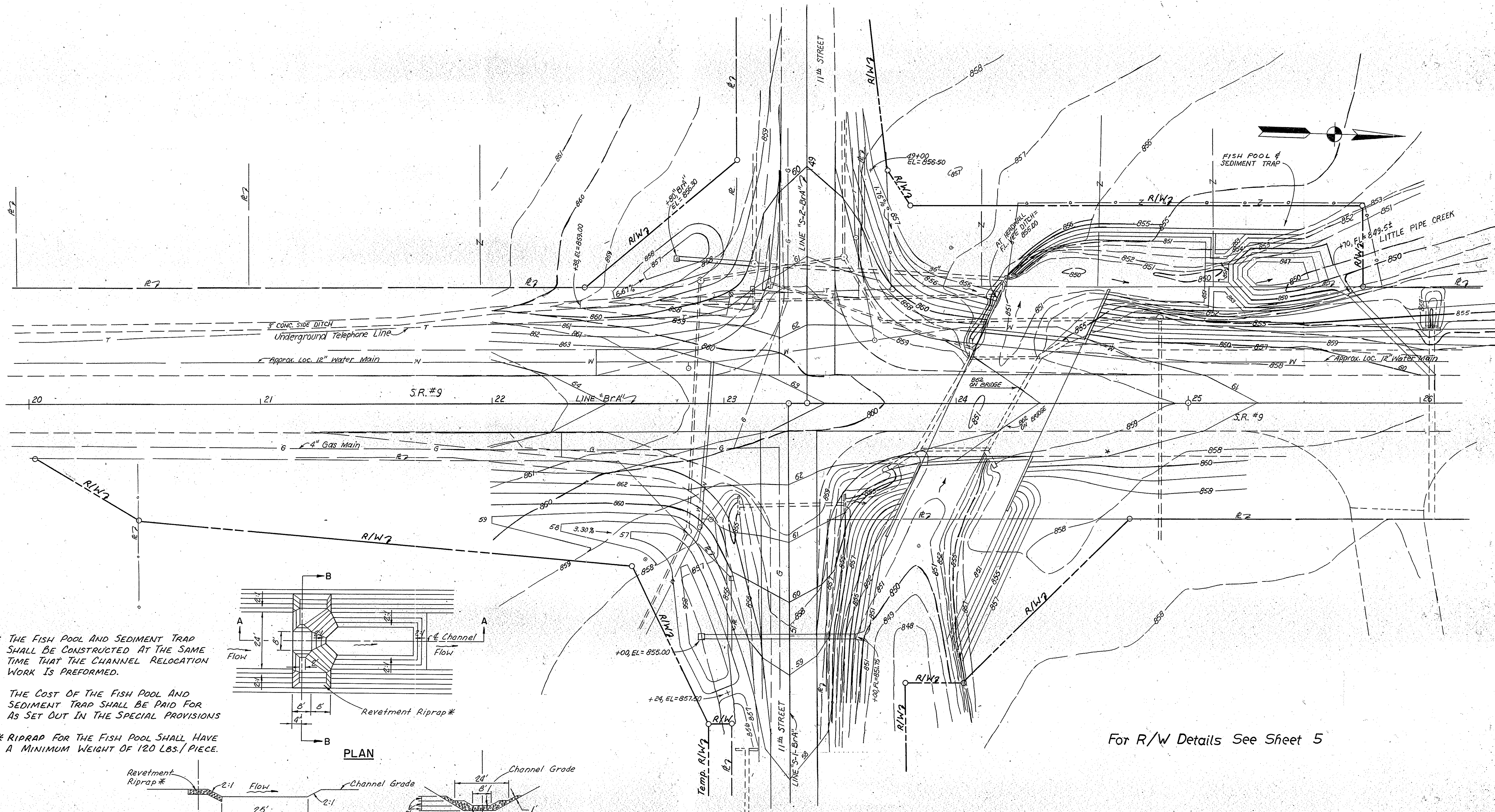
- LEGEND**
- (B) R.C. BRIDGE APPROACH
 - (G) 13 1/2" FULL DEPTH FLEXIBLE PAVEMENT
 - (H) 10" FULL DEPTH FLEXIBLE PAVEMENT
 - (S) BITUMINOUS SHOULDER - 6"
 - (SD) BITUMINOUS SHOULDER - 5"
 - (R) RESURFACE

For R/W Details See Sheet 5

DETAILS

SCALE: 1" = 20'

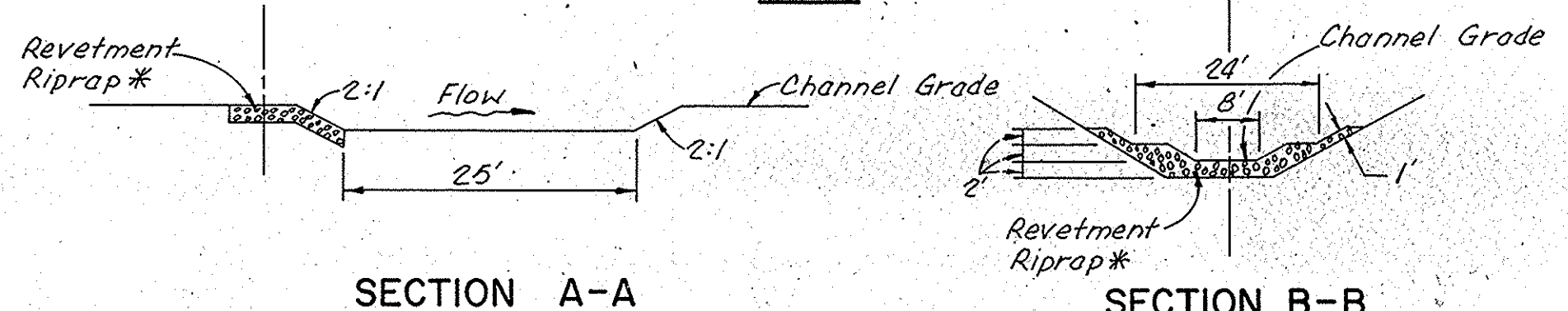
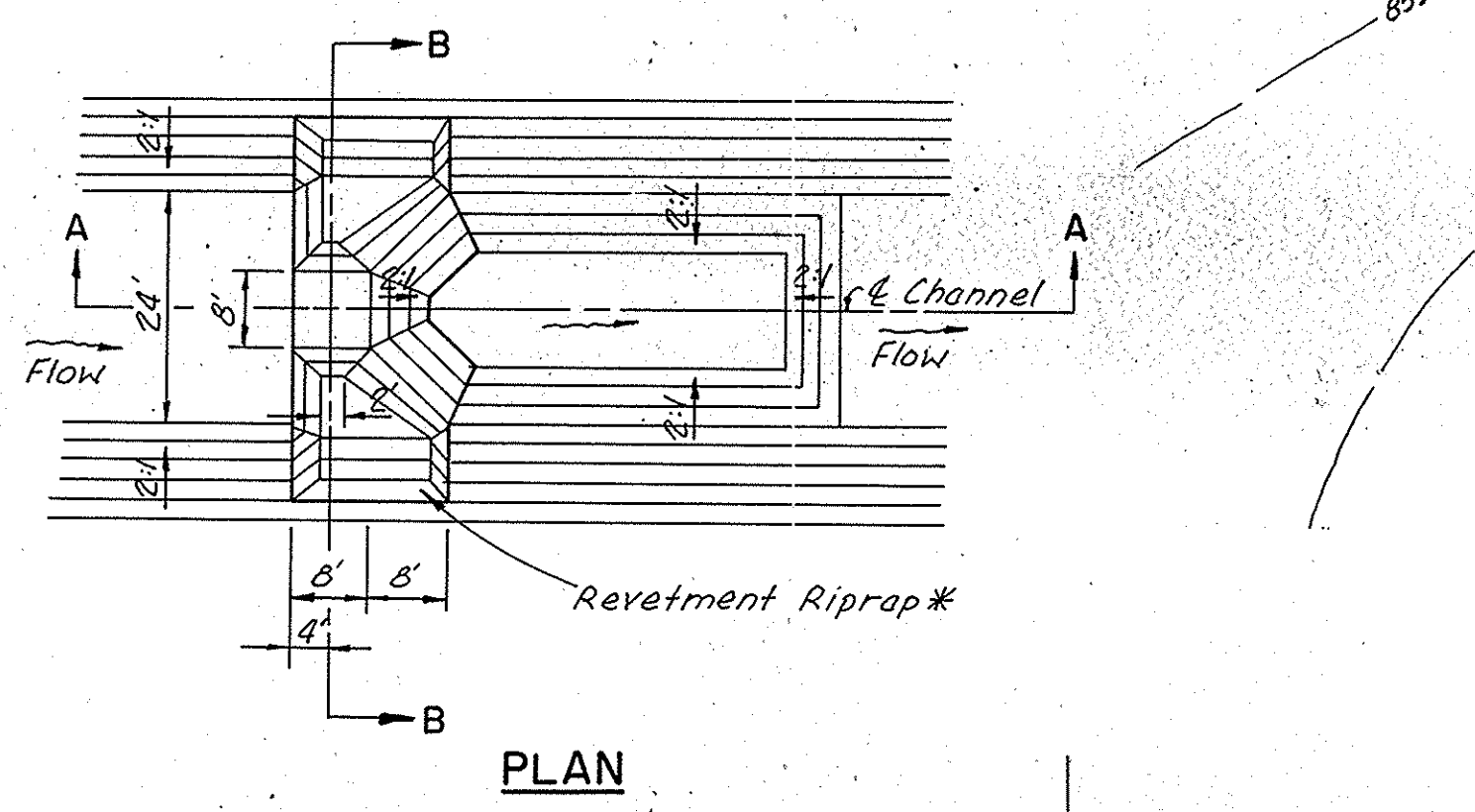
FEDERAL ROAD REGION NO.	STATE	PROJECT NO.	FISCAL YEAR	SHEET NO.	TOTAL SHEETS
5	IND.	ST-179-1(2)		11	15



NOTE: THE FISH POOL AND SEDIMENT TRAP SHALL BE CONSTRUCTED AT THE SAME TIME THAT THE CHANNEL RELOCATION WORK IS PERFORMED.

THE COST OF THE FISH POOL AND SEDIMENT TRAP SHALL BE PAID FOR AS SET OUT IN THE SPECIAL PROVISIONS

* RIPRAP FOR THE FISH POOL SHALL HAVE A MINIMUM WEIGHT OF 120 LBS./PIECE.



FISH POOL AND SEDIMENT TRAP

For R/W Details See Sheet 5

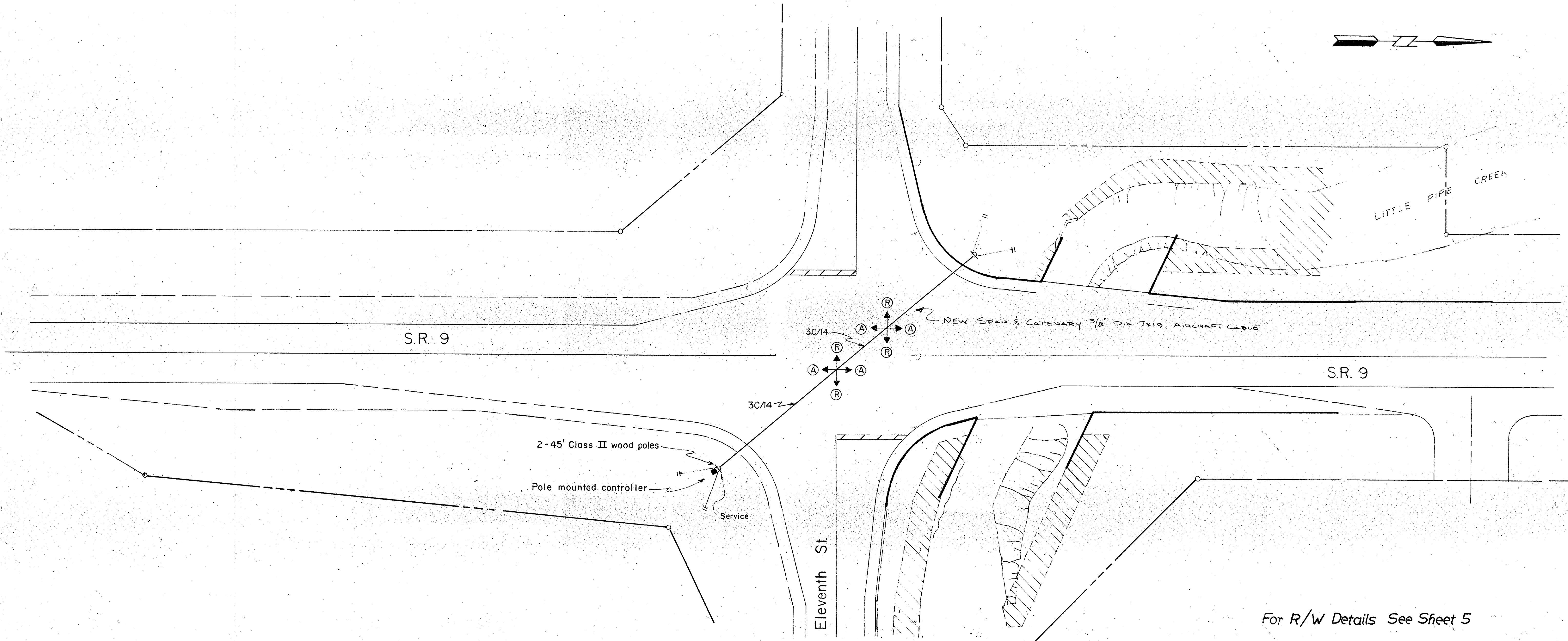
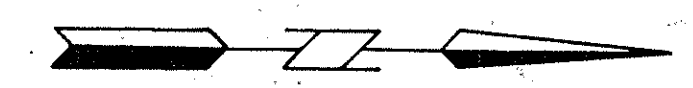
CONTOUR AND GRADING PLAN

SCALE: 1" = 20'

FEDERAL ROAD DISTRICT NO.	STATE	PROJECT NO.	FISCAL YEAR	SHEET NO.	TOTAL SHEETS
5	IND.	ST-179-1(2)		12	15

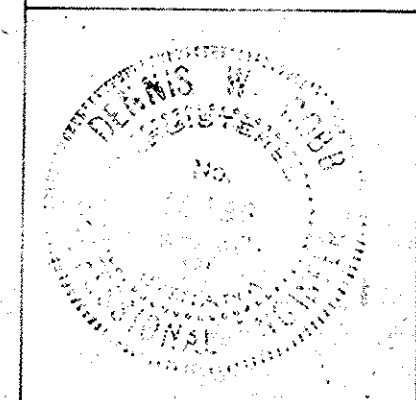
CONT. NO.
PROJ. NO.
COMM. NO. 02-048-012

NOTE
 POLES TO BE RELOCATED IN THE LOCATIONS SHOWN.
 ALL NEW SIGNAL CABLE TO BE INSTALLED.
 EXISTING FLASHER & SIGNAL INDICATIONS TO BE REUSED.
 THE CONTRACTOR SHALL HAVE THE OPTION OF SUPPLYING NEW WOOD POLES AND KEEPING THE EXISTING OR RELOCATING THE EXISTING POLES.



For R/W Details See Sheet 5

INDIANA STATE HIGHWAY COMMISSION
 DIVISION OF TRAFFIC
 FLASHING BEACON RELOCATION
 S.R. 9 & 11th St.
 ALEXANDRIA, MADISON CO.
 GREENFIELD DISTRICT
Dennis W. Cobb
 ENGINEER OF ELECTRICAL SYSTEMS



SCALE: 1" = 20' DRAWN BY: R.J. WILSON DATE: 6-1-79

STRUCTURE DATA

* IF CONTRACTOR ELECTS TO USE METAL PIPE THICKNESS AS SHOWN BELOW ARE TO BE USED.

STRUCTURE NUMBER	LOCATION	LEFT	RIGHT	CROSS	SIZE INCHES	GROUP	DESCRIPTION SEE STD. SHEET "MP" FOR ACCEPTABLE TYPE OF PIPE WITHIN EACH GROUP.	LENGTH FT.	SKEW	FLOW LINE			CONCRETE CLASS "A"	"B" BORROW	METHOD OF BACKFILL	THICKNESS		VELOCITY	RIPRAP	PIPE END SECTION	REIN. STEEL	REMARKS	PLANS ON SHEET NO.	
										COVER	UP STREAM ELEV.	DOWN STREAM ELEV.				STEEL	ALUM.							
1	22+90 "BrA"	✓					Exist. Manhole															3.5 Lft. of Reconstructed M.H. & Adjust Casting To Grade	5	
2	22+80 "BrA"	✓			24	P	Inlet Type E-7 &	30		1	856.72	853.50			A								Connect To STR. N# 3 Adjust Casting To Grade	5
3	23+13 "BrA"	✓					Existing Manhole																3.5 Lft. of Reconstructed M.H. & Adjust Casting To Grade	5
4	22+85 "BrA"	✓					Existing Manhole																To Be Removed	5
5	23+25 "BrA"	✓					Exist. 18" C.M.P.																3 Lft. of Reconstructed M.H. & Adjust Casting To Grade	5
6	23+52 "BrA"	✓					Exist. Manhole																To Be Removed	5
7	23+13 "BrA"	✓					Exist. 18" Conc. Pipe																To Be Removed	5
8	23+20 "BrA"	✓					Exist. 15" C.M.P.																To Be Removed	5
9	24+88 "BrA"	✓					Exist. Manhole																No Change Required	5
10	26+05 "BrA"	✓					Exist. 30" Conc. Pipe				850.0±	849.5±											Remove 20 Lft. of Pipe & 1-25° Bend Req'd.	6
11	27+86.5 "BrA"	✓			15	D		32		1	855.11	854.79			A	.064	.105						1-25° Bend Req'd.	6
12	47+56 "5-2-BrA"	✓			15	P	Inlet Type E-7 &	4		3	855.42	855.40			A								Connect To Exist. 30" Pipe	7
13	47+87 "5-2-BrA"	✓					Exist. Drop Inlet																No Change Required	7
14	47+61 "5-2-BrA"	✓					Exist. 15" C.M.P.						0.25										Seal Inlet & Outlet End	7
15	48+08 "5-2-BrA"	✓					Exist. Manhole																No Change Required	7
16	51+00 "5-1-BrA"	✓			24	D	Inlet Type E-7 &	64		5	852.39	851.75			B	.064	.060						No Change Required	8
17	51+00 "5-1-BrA"	✓					Exist. 15" C.M.P.																No Change Required	8

LEGEND FOR ABBREVIATION

F.B.C.C.S./P.I. FULLY BITUMINOUS COATED CORRUGATED STEEL WITH PAVED INVERT.	F.B.C.S.A./P.I. FULLY BITUMINOUS COATED CORRUGATED STEEL ARCH WITH PAVED INVERT.
F.B.C.C.A.A./P.I. FULLY BITUMINOUS COATED CORRUGATED ALUMINUM ALLOY WITH PAVED INVERT.	F.B.C.C.A.A.A./P.I. FULLY BITUMINOUS COATED CORRUGATED ALUMINUM ARCH WITH PAVED INVERT.
F.B.C.C.S. FULLY BITUMINOUS COATED CORRUGATED STEEL.	F.B.C.C.A. FULLY BITUMINOUS COATED CORRUGATED STEEL ARCH.
C.S. CORRUGATED STEEL.	F.B.C.C.A.A.A. FULLY BITUMINOUS COATED CORRUGATED ALUMINUM ALLOY ARCH.
C.A.A. CORRUGATED ALUMINUM ALLOY.	C.S.A. CORRUGATED STEEL ARCH.
S.P.S. STRUCTURAL PLATE STEEL.	C.A.A.A. CORRUGATED ALUMINUM ALLOY ARCH.
F.B.C.P.C.S. FULLY BITUMINOUS COATED PERFORATED CORRUGATED STEEL.	S.P.S.A. STRUCTURAL PLATE STEEL ARCH.

PAVED SIDE DITCH AND SODDING SUMMARY TABLE

STATION TO STATION	PAVED SIDE DITCH (Linear Feet)					SODDING (Square Yards)				SHEET NUMBER
	TYPE	PAY LENGTH	NUMBER OF LUGS	PAY LENGTH	CUT OFF WALLS	FOR PAVED SIDE DITCH	FOR DITCHES	OTHER	TOTAL SQUARE YARDS SOD	
20+00 - 22+75 "BrA", Rt.								344	344	4
22+38 - 22+80 "BrA", Lt.	A	45		2	10	55	14		14	4
23+80 - 24+10 "BrA", Lt.							30		30	4
24+10 - 24+18 "BrA", Lt.	A	8		2	10	18	2		2	4
26+15 - 27+70 "BrA", Rt.								261	261	5
28+05 - 28+32 "BrA", Rt.								46	46	5
47+50 - 47+75 "5-2-BrA", Rt.								29	29	6
48+20 - 49+40 "5-2-BrA", Lt.								120	120	6
50+60 - 51+17 "5-1-BrA", Rt.								71	71	7
51+37 - 51+47 "5-1-BrA", Rt.								21	21	7
51+72 - 52+22 "5-1-BrA", Rt.								13	13	7
TOTALS:										
P.S.D. TYPE "A" = 73 Lft.										
SODDING = 951 sys.										

RIGHT-OF-WAY MARKERS

STATION	OFFSET	LEFT	RIGHT
20+47 "BrA"	50'		✓
22+40 "BrA"	50'±	✓	
22+60 "BrA"	70'		✓
23+80 "BrA"	85'	✓	
24+75 "BrA"	50'±		✓
25+75 "BrA"	85'	✓	
25+75 "BrA"	50'±	✓	
48+21 "5-2-BrA"	25'±	✓	
48+95 "5-2-BrA"	30'±		✓
49+00 "5-2-BrA"	35'	✓	
51+20 "5-1-BrA"	50'	✓	
51+20 "5-1-BrA"	75'	✓	
51+37 "5-1-BrA"	25'±		✓
51+37 "5-1-BrA"	35'		✓
52+50 "5-1-BrA"	12'	✓	
52+50 "5-1-BrA"	50'	✓	

APPROACH TABLE

LOCATION	DESCRIPTION	RADIUS	WIDTH	LENGTH	BITUMINOUS SURFACE - 1"	BITUMINOUS BINDER	BITUMINOUS BASE - 9"	TACK COAT	BITUMINOUS BASE FOR SHOULDERS	SEAL COAT TYPE 2
		FT.	FT.	FT.	TON	TON	TON	TON	TON	TON
Sta. 28+28 "BrA", Rt. (5-1-BrA)	P.R.A. TYPE "B"	40	24	210	61	15	540	0.72	29	112
Sta. 28+36 "BrA", Lt. (5-2-BrA)	P.R.A. TYPE "B"	40	24	224	62	23	510	0.70	19	134
Sta. 25+85.5 "BrA", Rt.	CLASS III DRIVE	10	30	27	5		47	0.04		
Sta. 27+86.5 "BrA", Rt.	CLASS IV DRIVE	10	20	27	4		32	0.04		
Sta. 51+60 "5-1-BrA", Rt.	PRIVATE DRIVE		24	17	3	8				
Sta. 47+90 "5-2-BrA", Rt.	LONGWOOD DRIVE	10	33	6	1	4				
TOTAL					136	50	1129	1.52	48	246

TOTAL

136 50 1129 1.52 48 246

UNDERDRAIN TABLE

RUN NO.	LOCATION	6" GROUP	6" NON-PREF	OUTLET	WYES	BENDS	SODDING SYS.	DELIN. POSTS
		"K" PIPE	FBCCS PIPE					
1	20+00 To 22+75 "BrA", Rt.	275'	42'	Ditch Rt. of Sta. 22+75		1-90°	2	1
2	20+00 To 22+75 "BrA", Lt.	275'	42'	Ditch Lt. of Sta. 22+75		1-90°	2	1
3	50+60 "5-1-BrA", Lt. To 23+86 "BrA", Rt.	62'	10'	Creek Lt. of Sta. 50+60		1-90°	2	1
4	23+70 To 24+08 "BrA", Lt.	42'	20'	Ditch Lt. of Sta. 23+86		1-90°	2	1
5	24+40 To 27+70 "BrA", Rt.	330'	28'	Connect To Run N# 6		1-90°		
6	24+55 To 27+70 "BrA", Lt.	315'	26'	Ditch Lt. of Sta. 27+70	1-Tee		2	1
	1 Tee x 5 Lft./Tee		5'					
	5 Bends x 2 Lft./Bend		10'					
TOTALS		1,299	183		1	5	10	5

AGGREGATE FOR UNDERDRAIN
1,482 Lft. x 0.09 cys/Lft. = 133 cys.

SHT. NO.	LOCATION	RIPRAP TYPE	SYS.
4	24+00 To 24+40 "BrA", Rt.	Revetment	88
4	24+22 To 25+31 "BrA", Lt.	Revetment	223
4	28+32 To 28+41 "BrA", Rt.	Revetment	10
7	50+31 To 52+50 "5-1-BrA", Lt.	Revetment	303
TOTAL			624

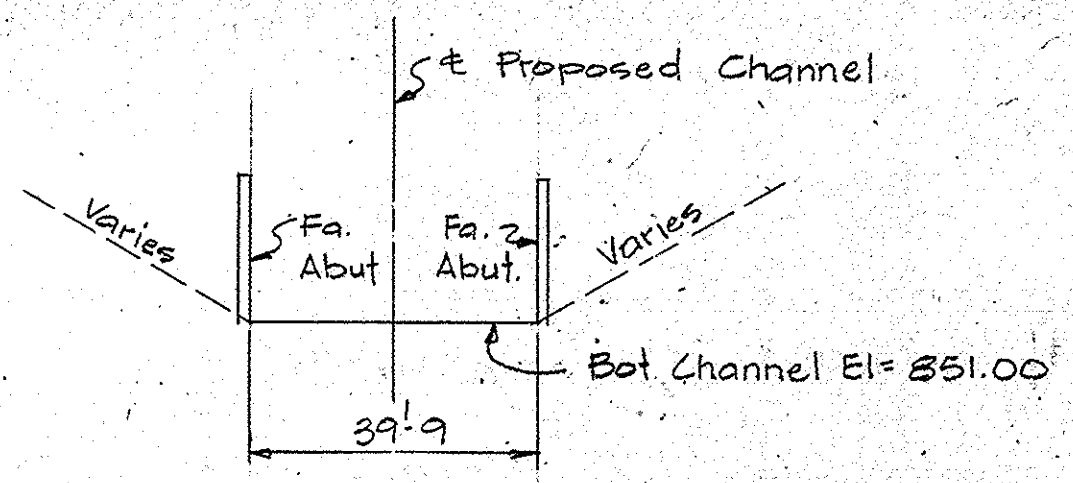
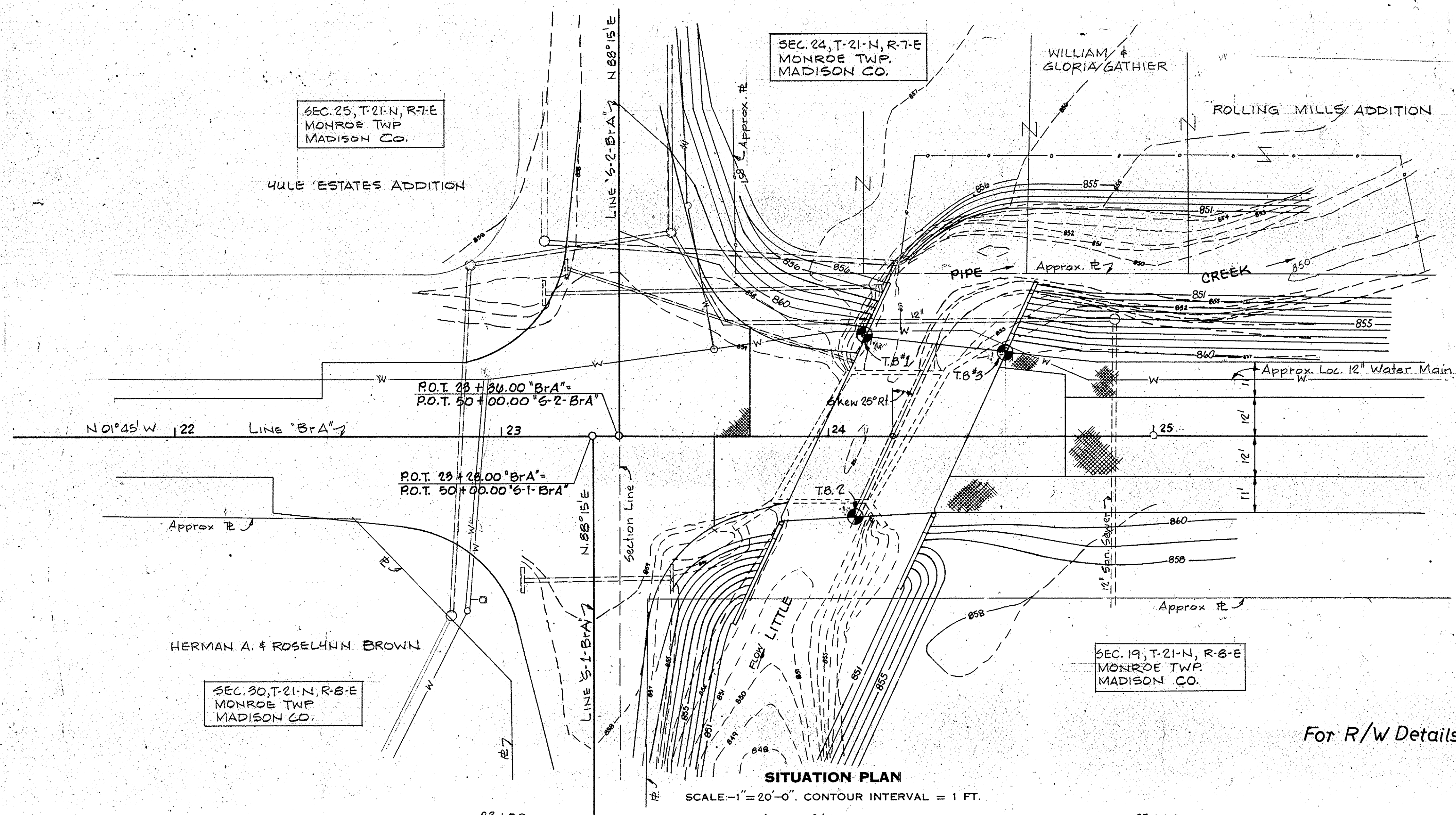
MISCELLANEOUS TABLES

BRIDGES OVER 20' SPAN				
PUB. ROAD REG. NO.	STATE	PROJECT NO.	FISCAL YEAR	TOTAL SHEETS
5	IND.	ST-179-1(2)	14	15

TEST BORING LOCATIONS
 T.B.#1 Sta. 24+11, 30' Lt., 30' Deep
 T.B.#2 Sta. 24+08, 25' Rt., 30' Deep
 T.B.#3 Sta. 24+54, 25' Lt., 40' Deep

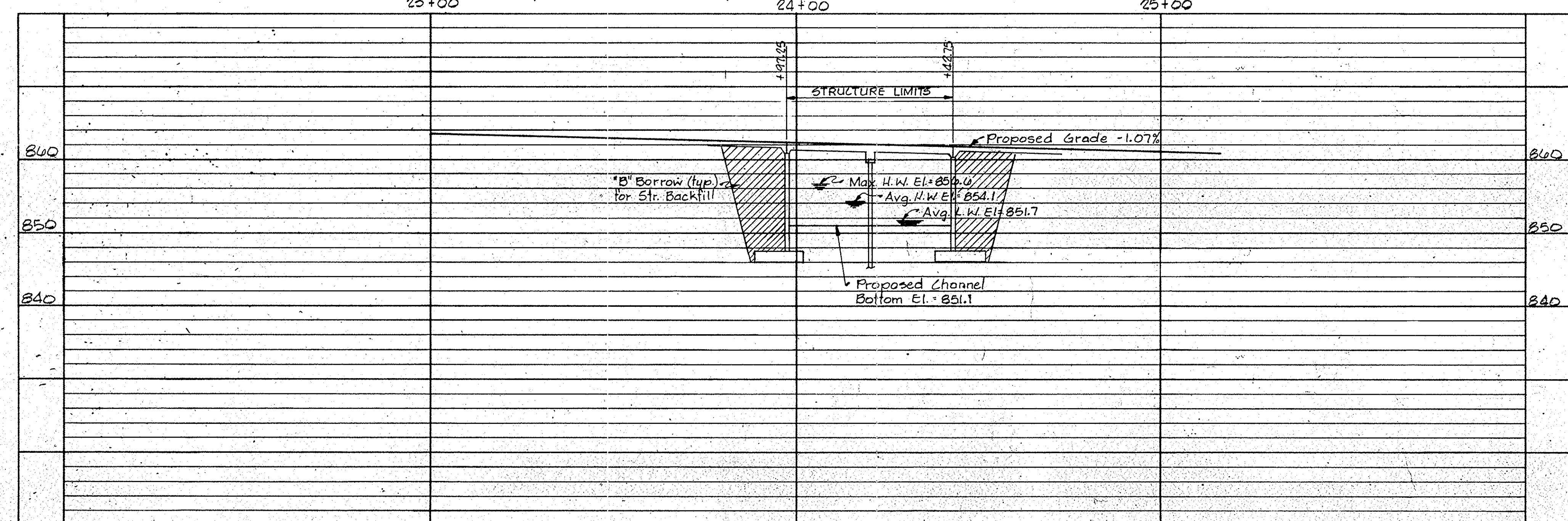
UTILITIES
 Power: Public Service Indiana
 1000 E. Main St.
 Plainfield, Indiana 46168
 Telephone: Indiana Bell Tele.
 333 S. Madison
 Muncie, Indiana 47305
 Gas: Indiana Gas Company
 1680 N. Meridian St.
 Indianapolis, Indiana 46202
 Water & Sewer: City of Alexandria
 Town Hall
 Alexandria, Indiana 46001

Waterway Information
 Drainage Area = 7.6 sq. miles
 Design Discharge Q_{100} = 1800 Cfs
 Waterway Area Req'd. = 300 sq. ft.
 Waterway Area Provided = 312 sq. ft.
 High Water El. (Q_{100}) = 859.1

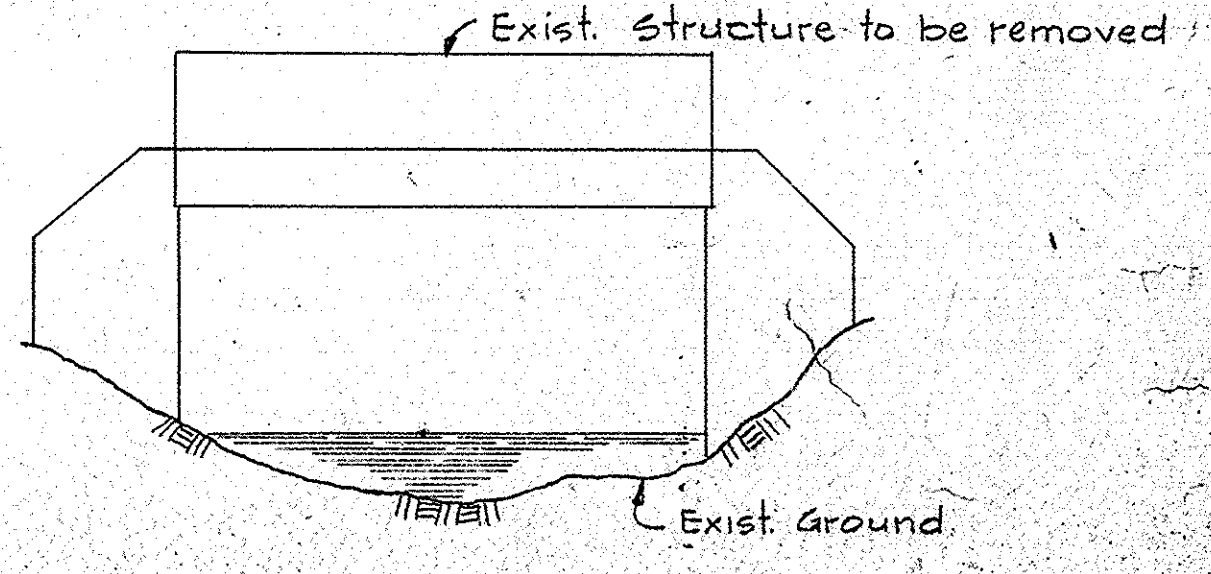


SECTION THRU PROPOSED CHANNEL
 (UNDER PROPOSED STRUCTURE)
 No Scale

For R/W Details See Sheet 5



PROFILE ON PROPOSED ROADWAY
 SCALES: HORIZ. 1"=20'-0" VERT. 1"=10'-0"



ELEVATION ~ EXIST. STRUCTURE (to be Removed)
 No Scale

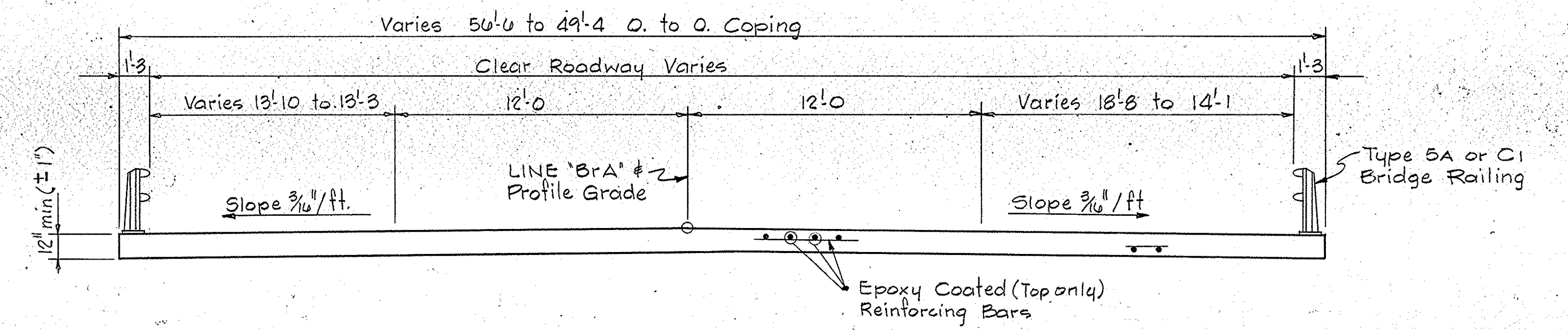
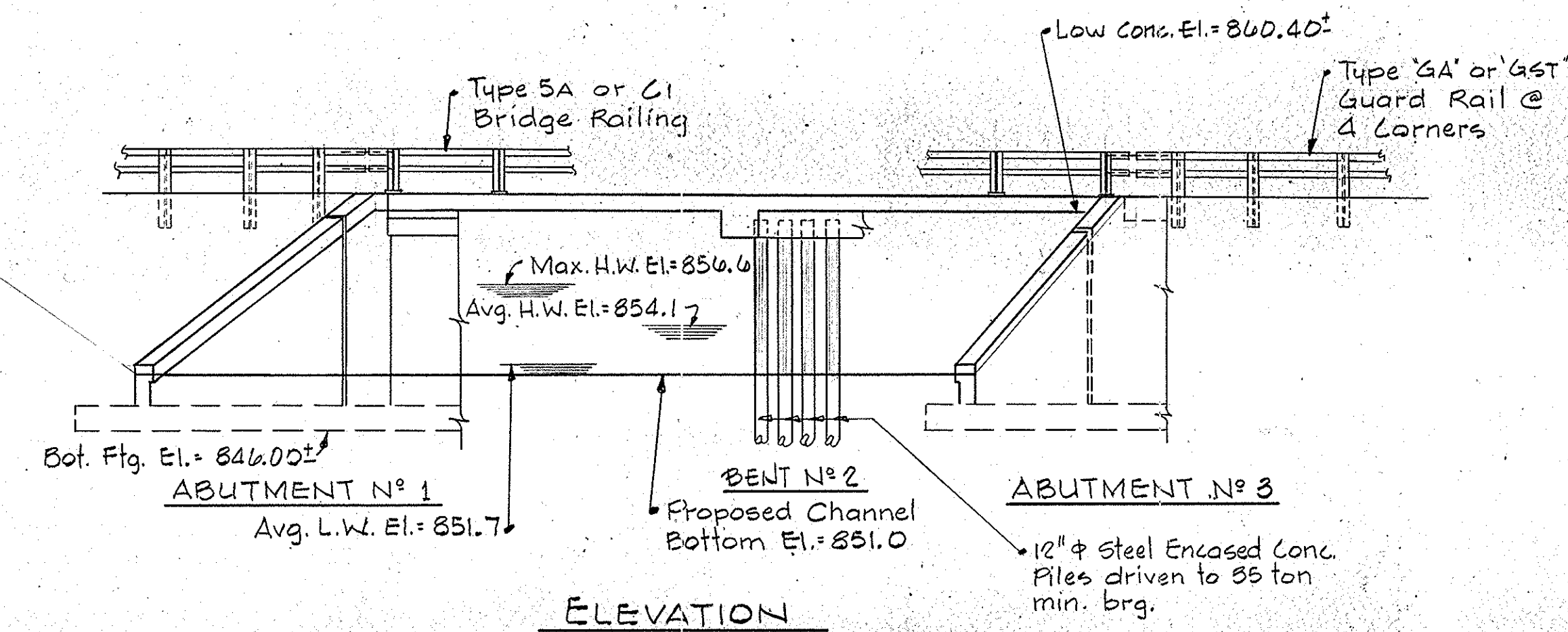
LAYOUT
 CONTINUOUS REINFORCED CONCRETE SLAB BRIDGE
 2 SPANS @ 22' 0" SKEW 25° RT.
 S.R. 9 OVER LITTLE PIPE CREEK
INDIANA STATE HIGHWAY COMMISSION
 MADISON COUNTY

SCALE: -AS NOTED
 SUBMITTED FOR APPROVAL
 DRAWING: # OF SHEET #
 PROJECT: - ST-179-1(2) STATION: -
 BRIDGE CONTRACT NO.
 BRIDGE FILE: - 9-48-6702

DRAWN: SCS C.K.D. T.S.U.
 DESIGNED: RDP C.K.D.
 TRACED: C.K.D.

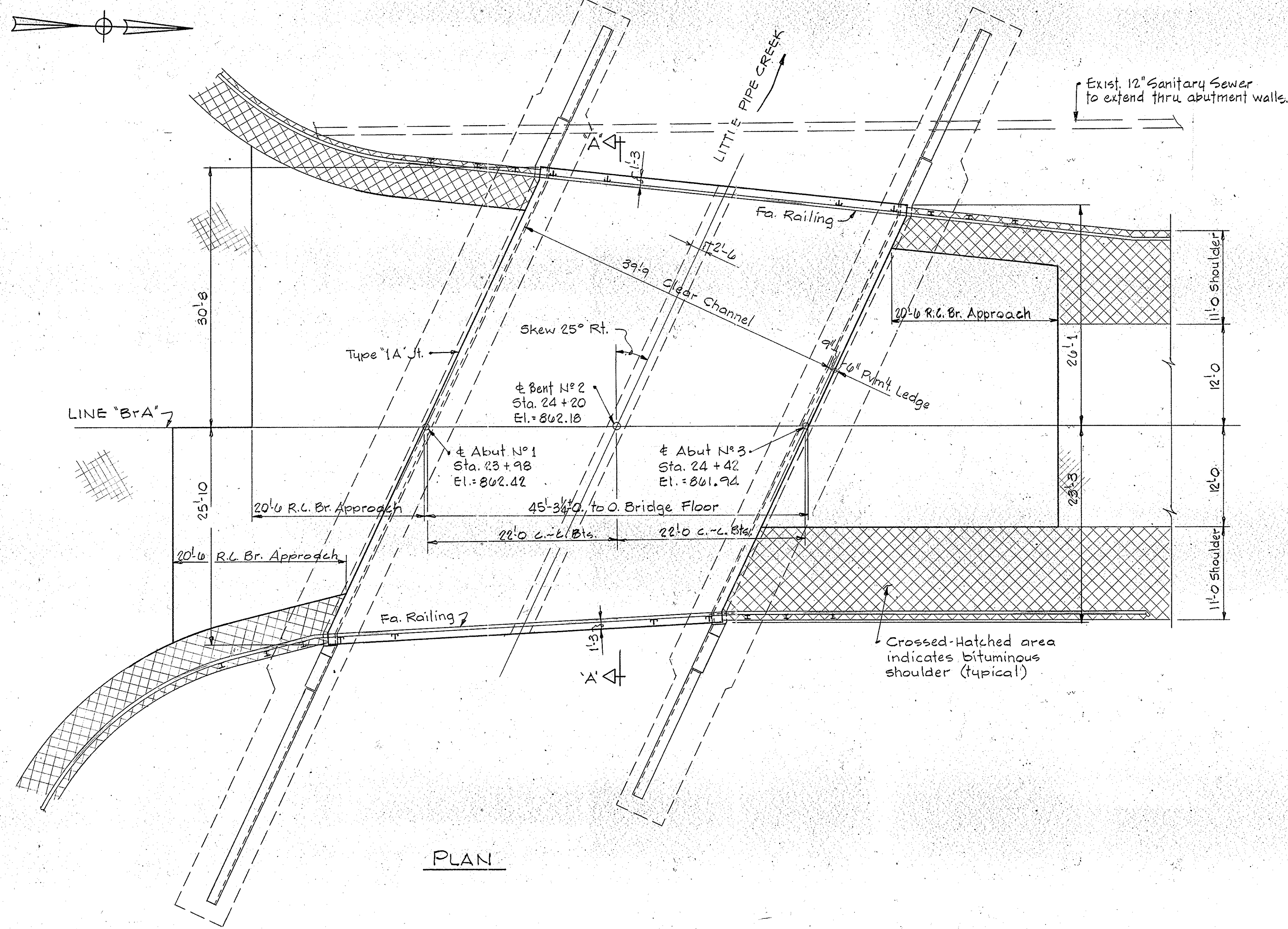
NOTE: FIELD NOTES, BOOK

STRUCTURE TO BE BUILT ON A -1.07% GRADE



SECTION "A-A"
Scale 1/4" = 1'-0"

ELEVATION



PLAN

DESIGN DATA

Designed for HS20-44 loading in accordance with 1977 A.A.S.H.T.O. Specifications and 1978 Interims
 Dead Load: Actual load plus 35#/sq.ft. for future wearing surface.

GENERAL NOTES

Present structure is a reinf. conc. girder, one span @ 28'-0"; 30° skew rt., 38'-0" clear rdwy., built in 1938 by the I.S.H.C., as 9-H-3123. Present structure to be removed.

TYPICAL CROSS-SECTION

See sheet No.

GENERAL PLAN

CONTINUOUS REINFORCED CONCRETE SLAB BRIDGE
 2 SPANS @ 22'-0" SKEW 25° RT.
 OVER LITTLE PIPE CREEK ON S. R. 9

INDIANA STATE HIGHWAY COMMISSION

SCALE: 1/8" = 1'-0" U.N. DATE: -

SUBMITTED FOR APPROVAL: _____

DRAWING: ~~22~~ OF SHEET: 15 OF 15
 PROJECT: ST-179-1(2)
 CONTRACT NO.
 BRIDGE FILE: 9-48-6702

DESIGNED	C.K'D
DRAWN	C.K'D
TRACED	C.K'D