

INDEX

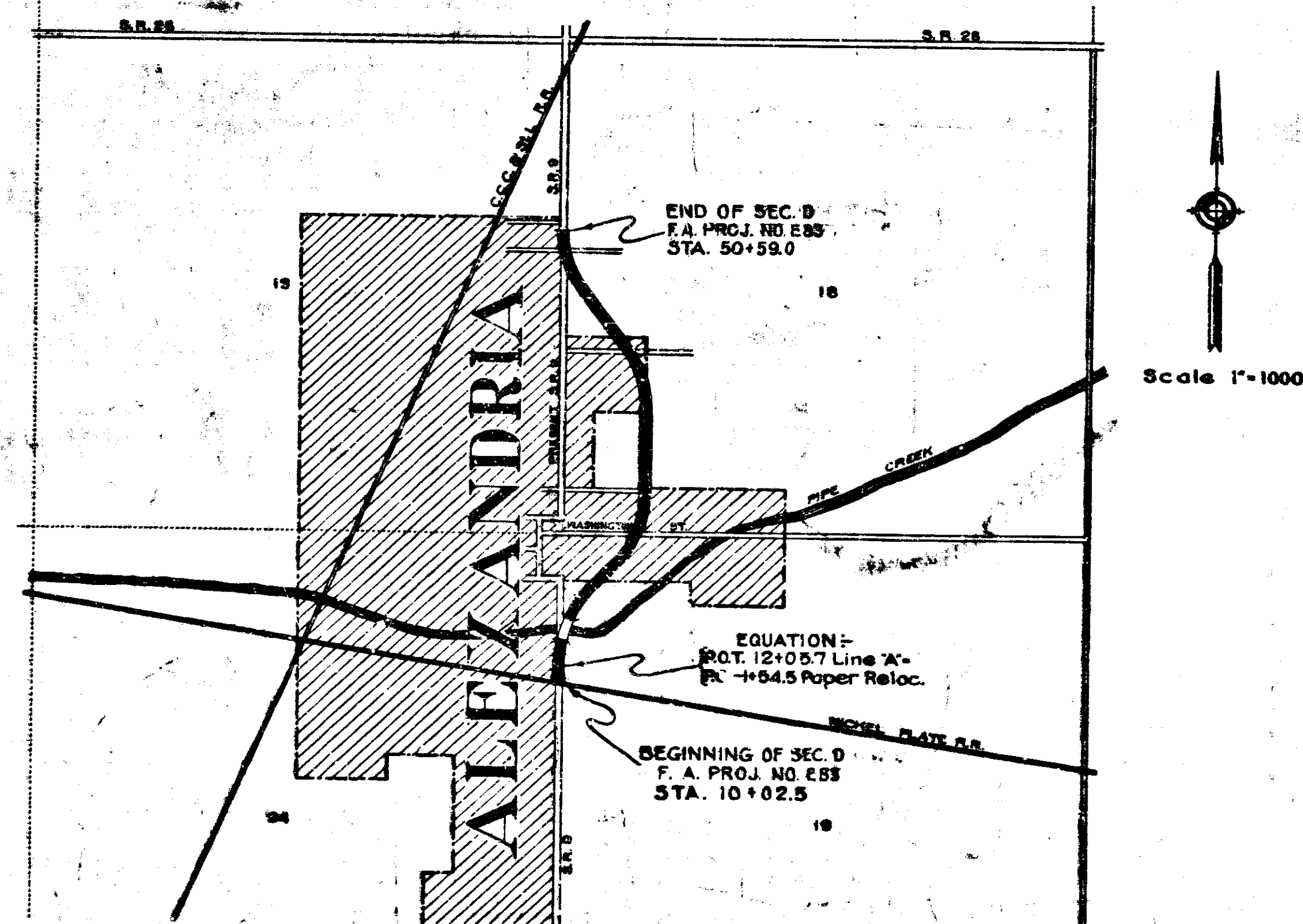
SHEET NO.	1	TITLE SHEET
SHEET NO.	2-3	STANDARD CROSS SECTIONS (C.C. OCT. 1925 Rev. APRIL 29, 1932) & (C.C. & B. AUG. 1931 Rev. APRIL 29, 1932)
SHEET NO.	4-7	PLAN AND PROFILE
SHEET NO.	8	BRIDGE AND CULVERT DATA - ESTIMATE OF QUANTITIES FOR CONC. BITUM. CONC. & BRICK PAVTS.
SHEET NO.	10-11	MANHOLES STANDARDS (JAN. 1933) & (SHEET 'B' JAN. 1933)
SHEET NO.		STD. REINF. CONC. BOX CULVERT
SHEET NO.		STD. REINF. CONC. CULV. - SLAB TOP TYPE WITHOUT FILL (10'-0" TO 18'-0" SPAN)
SHEET NO.		STD. REINF. CONC. CULV. - SLAB TOP TYPE UNDER FILL (4'-0" TO 6'-0" (10'-0" TO 20'-0" SPAN)
SHEET NO.		STD. REINF. CONC. CULV. - SLAB AND GIRDER WITHOUT FILL (20'-0" SPAN) 24'-0" ROADWAY
SHEET NO.		STD. REINF. CONC. CULV. - SLAB TOP TYPE WITHOUT FILL (10'-0" TO 20'-0" SPAN) 18' SKEW 24'-0" RDWY.
SHEET NO.		STD. REINF. CONC. CULV. - SLAB TOP TYPE WITHOUT FILL (10'-0" TO 16'-0" SPAN) 30' SKEW.
SHEET NO.		STD. REINF. CONC. CULV. - SLAB TOP TYPE WITHOUT FILL (10'-0" TO 20'-0" SPAN) 30' SKEW.
SHEET NO.		STD. REINF. CONC. CULV. - SLAB TOP TYPE UNDER FILL (10'-0" TO 20'-0" SPAN) 20' SKEW.
SHEET NO.		STD. REINF. CONC. CULV. - SLAB TOP TYPE WITHOUT FILL (10'-0" TO 20'-0" SPAN) 45' SKEW.
SHEET NO.		STD. REINF. CONC. CULV. - SLAB TOP TYPE (6'-0" TO 16'-0" SPAN) GRAVITY TYPE.
SHEET NO.	8	ESTIMATE OF QUANTITIES FOR ROCK ASPHALT & ASPHALTIC MACADAM PAVTS.
SHEET NO.	16	STD. CABLE GUARD RAIL & GUARD RAIL FUNNELS (MAY 1932 Rev. DEC. 1932)
SHEET NO.	17	FLEXIBLE STEEL PLATE GUARD RAIL FUNNELS (REV. MARCH 1933)
SHEET NO.		STD. ARCH CULV.
SHEET NO.		STD. PLAN FOR FILLING IN PEAT MARSHES.
SHEET NO.	14	DATA FOR SUPER-ELEVATING AND WIDENING OF CURVES (SEPT. 1932)
SHEET NO.	15	STD. DETOUR SIGNS (JAN. 1927)
SHEET NO.	16-35	CROSS SECTIONS

STATE OF INDIANA
STATE HIGHWAY COMMISSION

PLAN AND PROFILE OF PROPOSED
STATE HIGHWAY
F.A. PROJECT NO. E83 SEC. D
ANDERSON-MARION ROAD

BEGINNING ON S.R. 9 AT THE NORTH RAIL OF THE NICKEL PLATE R.R. AND RUNNING NORTH TO A POINT ON S.R. 9 APPROX. 1632 FEET SOUTH OF THE C.C.C. & ST. L. R.R. IN ALEXANDRIA IN MADISON COUNTY.

GROSS LENGTH - 1.005 MI.
NET LENGTH - 0.961 MI.
SCALES -
PLAN (LONG. - 1"=100' PROFILE (HORIZ. - 1"=100'
(TRANS. - 1"=100' VERT. - 1"=10'
MAX. GRADE = 4.52%



Original location taken with the plan 11-15-33

INDIANA STATE HIGHWAY STANDARD SPECIFICATIONS DATED 1928 AND INDIANA STATE HIGHWAY STANDARD SPECIFICATIONS 'B' DATED APRIL 1931 ON FILE WITH U.S. BUREAU OF PUBLIC ROADS. TO BE USED WITH THESE PLANS, ALSO SUPPLEMENTAL SPECIFICATIONS DRAFT OF NOV. 1928 & NOV. 1930 ALSO SUPPLEMENTAL SPECIFICATIONS NO. 1 DRAFT OF MARCH 1932.

APPROVED & ADDED 2-13-33
BY STATE HIGHWAY COMMISSION OF INDIANA
Joseph Adams
DISTRICT ENGINEER - BUREAU OF PUBLIC ROADS
APPROVED 2-13-33
W. J. Sullivan
DISTRICT ENGINEER - BUREAU OF PUBLIC ROADS
RECOMMENDED FOR APPROVAL
DISTRICT ENGINEER - BUREAU OF PUBLIC ROADS
RECOMMENDED FOR APPROVAL
DISTRICT ENGINEER - BUREAU OF PUBLIC ROADS
APPROVED
DISTRICT ENGINEER - BUREAU OF PUBLIC ROADS

C.C.C. 3-11-33

DISTRICT NO.	STATE	PROJ. NO.	YEAR	SHEET NO.	TOTAL SHEETS
7	IND	E 83	1933	4	33

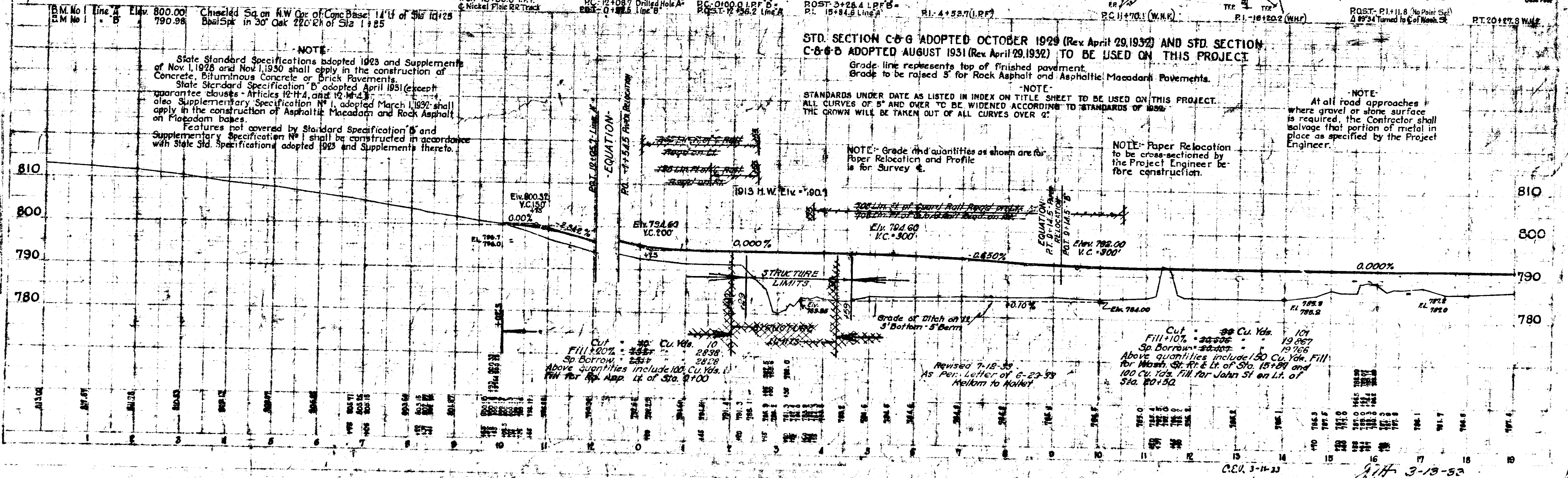
ALEXANDRIA
Pop. 1932 4,308.

SEC-24-T2IN-R7E
MONROE TWP
MADISON CO.

SEC-19-T2IN-R8E

BEGINNING OF SEC. D
F.A. PROJ. NO. E83
STA. 10 +02.5

ALL R/W ON THIS SHEET 35' EACH
SIDE C EXCEPT AS SHOWN.



NOTE:
State Standard Specifications adopted 1923 and Supplements of Nov. 1, 1928 and Nov. 1, 1930 shall apply in the construction of Concrete, Bituminous Concrete or Brick Pavements.
State Standard Specification "B" adopted April 1931 (except guarantee clauses - Articles 12-H, 4, and 12-H, 4, 5) shall also apply in the construction of Asphaltic Macadam and Rock Asphalt on Flagstone bases.
Features not covered by Standard Specification "B" and Supplementary Specification "A" shall be constructed in accordance with State Std. Specifications adopted 1923 and Supplements thereto.

STD. SECTION C-8-G ADOPTED OCTOBER 1929 (Rev. April 29, 1932) AND STD. SECTION C-8-G-B ADOPTED AUGUST 1931 (Rev. April 29, 1932) TO BE USED ON THIS PROJECT.

Grade line represents top of finished pavement.
Grade to be raised 3' for Rock Asphalt and Asphaltic Macadam Pavements.
NOTE: STANDARDS UNDER DATE AS LISTED IN INDEX ON TITLE SHEET TO BE USED ON THIS PROJECT.
ALL CURVES OF 5' AND OVER TO BE WIDENED ACCORDING TO STANDARDS OF 1932.
THE CROWN WILL BE TAKEN OUT OF ALL CURVES OVER 2'.

NOTE: Paper Relocation to be cross-sectioned by the Project Engineer before construction.

NOTE: At all road approaches where gravel or stone surface is required, the Contractor shall salvage that portion of metal in place as specified by the Project Engineer.

NOTE: Grade and quantities as shown are for Paper Relocation and Profile is for Survey.

Cut 10 Cu. Yds.
Fill 107.00 " 2838.29
Sp. Borrow 2838.29
Above quantities include 100 Cu. Yds. for R/W for R.P. App. Lt. of Sta. 9+00

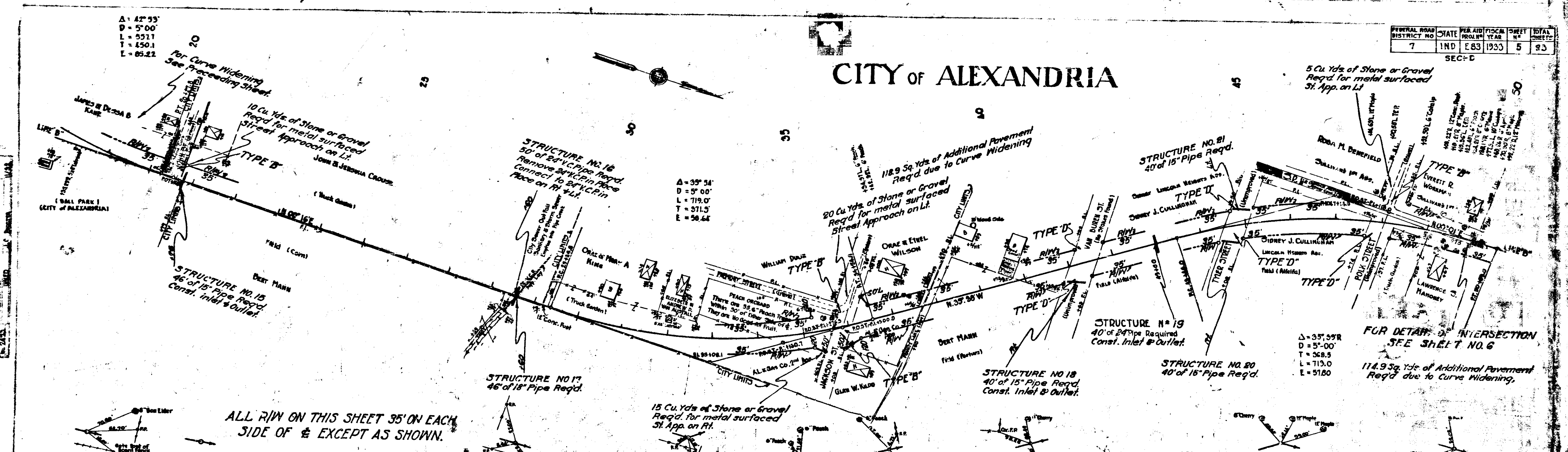
Cut 39 Cu. Yds. 121
Fill 107.00 " 19,067
Sp. Borrow 2838.29 " 19,766
Above quantities include 150 Cu. Yds. Fill for Wash, St. Rt. & Lt. of Sta. 15+89 and 100 Cu. Yds. Fill for John St. on Lt. of Sta. 20+52.

C.E.V. 3-14-33
3-19-33

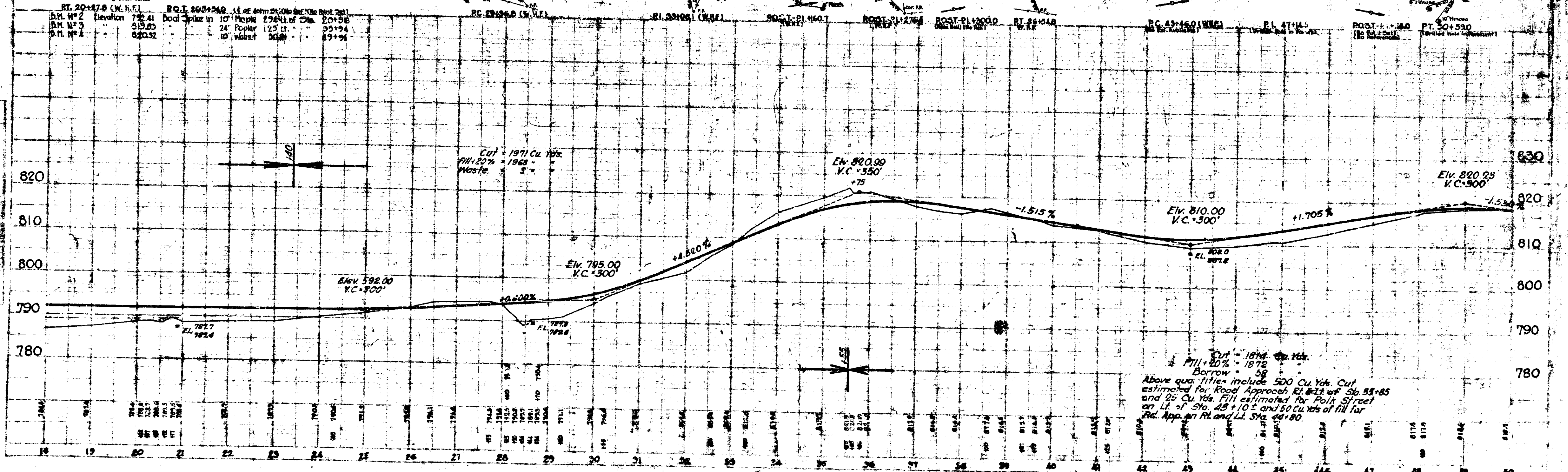
CITY OF ALEXANDRIA

FEDERAL ROAD DISTRICT NO.	STATE	FISCAL YEAR	SHEET NO.	TOTAL SHEETS
7	IND	E83	1933	5

SEC-D



ALL R/W ON THIS SHEET 35' ON EACH SIDE OF & EXCEPT AS SHOWN.



Cut - 1874 Cu Yds.
 Fill - 20% = 1872
 Borrow - 58
 Above quantities include 500 Cu Yds. Cut estimated for Road Approach RT. #12 of Sta. 33+85 and 25 Cu Yds. Fill estimated for Right of Way on Lt. of Sta. 48+10.5 and 50 Cu Yds. of fill for Rd. App. on Rt. and Lt. Sta. 48+80.

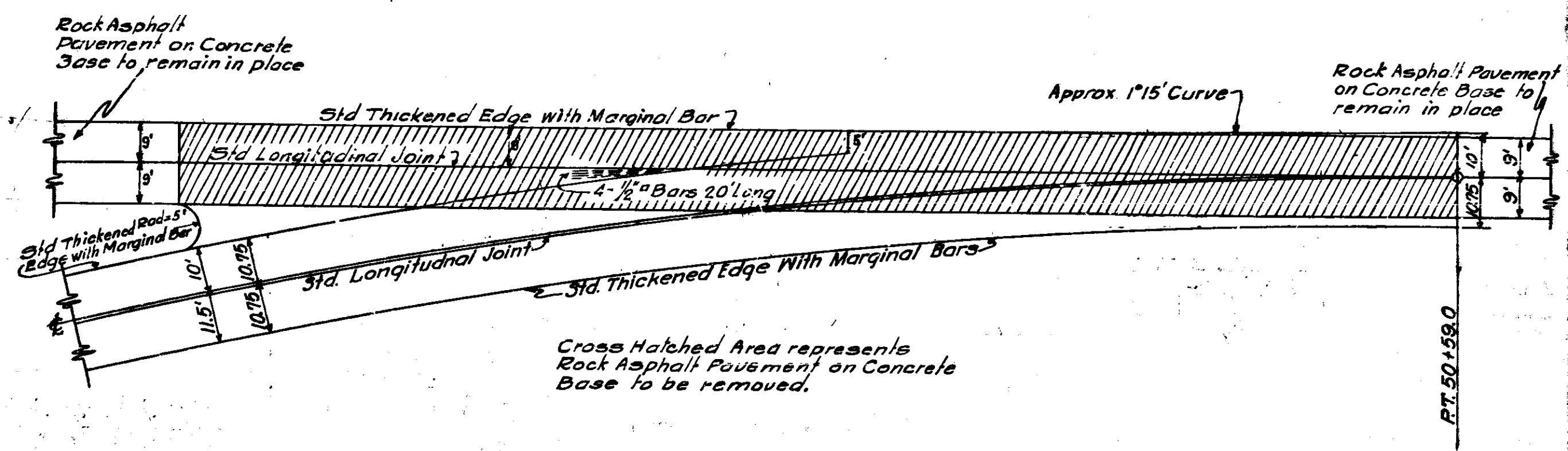
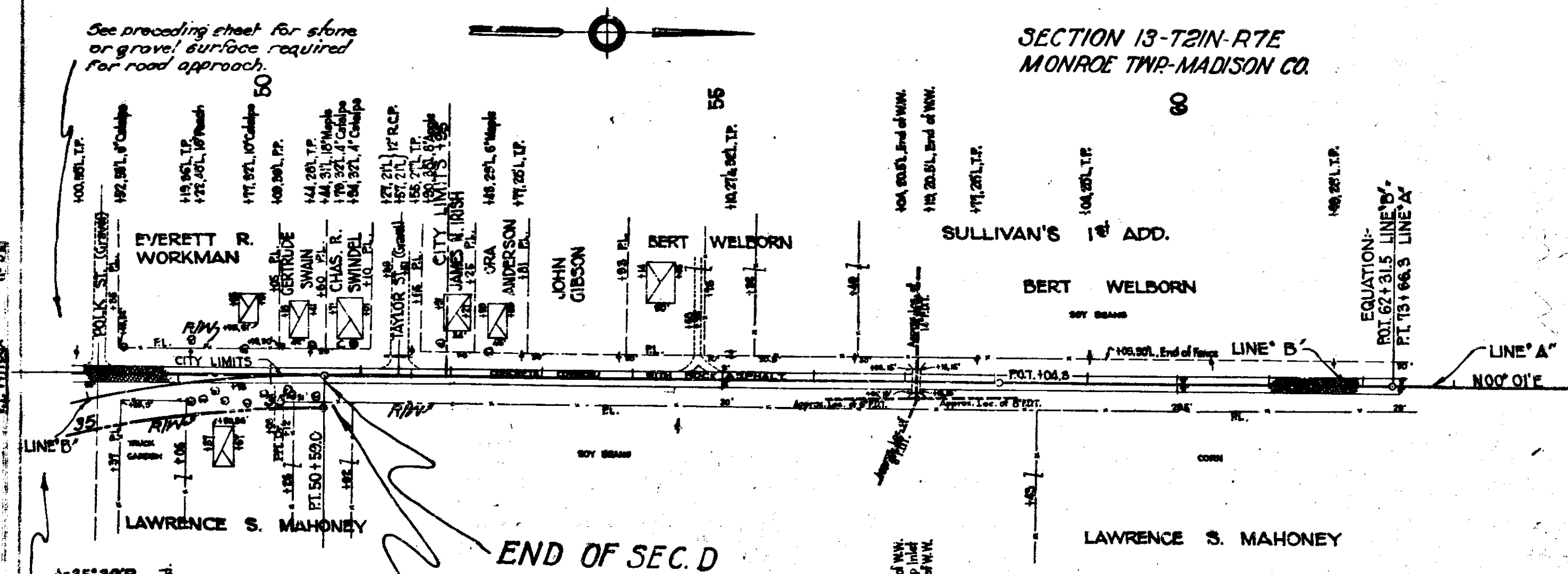
874 3-13-33

FEDERAL ROAD DISTRICT NO.	STATE	PER ANNUM FISCAL YEAR	SHEET NO.	TOTAL SHEETS
7	IND.	E83 1933	6	33

SECTION 'D'

SECTION 13-T2IN-R7E
MONROE TWP-MADISON CO.

SECTION 18-T2IN-R8E
MONROE TWP-MADISON CO.

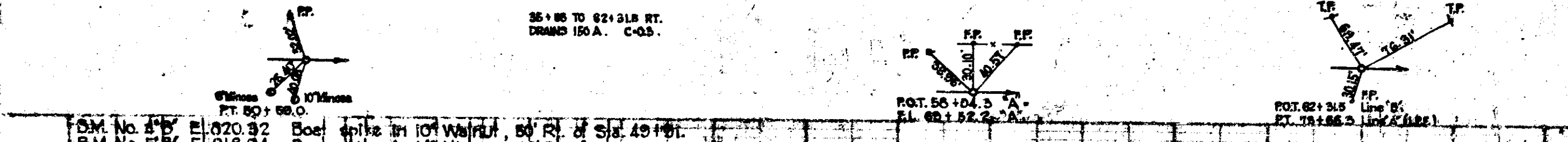


DETAIL OF INTERSECTION
AT STA. 50+59.0
Scale 1" = 80'-0"

ADDITIONAL QUANTITIES
FOR INTERSECTION
AT STA. 50+59.0
Pavement 251.9 Sq. Yds.
Steel 30.5 Pounds
Pavement Removal 634.5 Sq. Yds.

NOTE: ALL R/W ON THIS SHEET 35' ON EACH SIDE OF C. EXCEPT AS SHOWN.

END OF SEC. D
F.A. PROJ. NO. E83
STA. 50+59.0
FOR DETAIL OF INTERSECTION
SEE THIS SHEET.

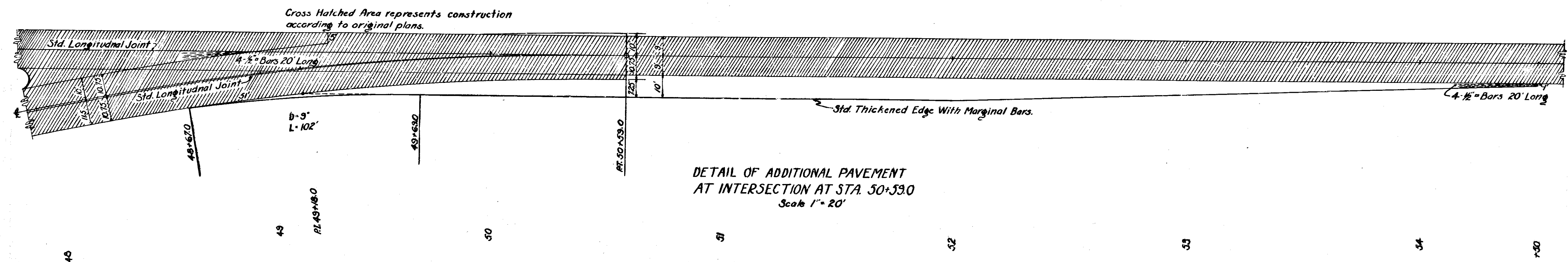


Sta.	Elev.	Notes
50+00	610.00	
50+05	610.00	
50+10	610.00	
50+15	610.00	
50+20	610.00	
50+25	610.00	
50+30	610.00	
50+35	610.00	
50+40	610.00	
50+45	610.00	
50+50	610.00	
50+55	610.00	
50+60	610.00	
50+65	610.00	
50+70	610.00	
50+75	610.00	
50+80	610.00	
50+85	610.00	
50+90	610.00	
50+95	610.00	
51+00	610.00	

2000 3-11-33

J.H. 3-15-33

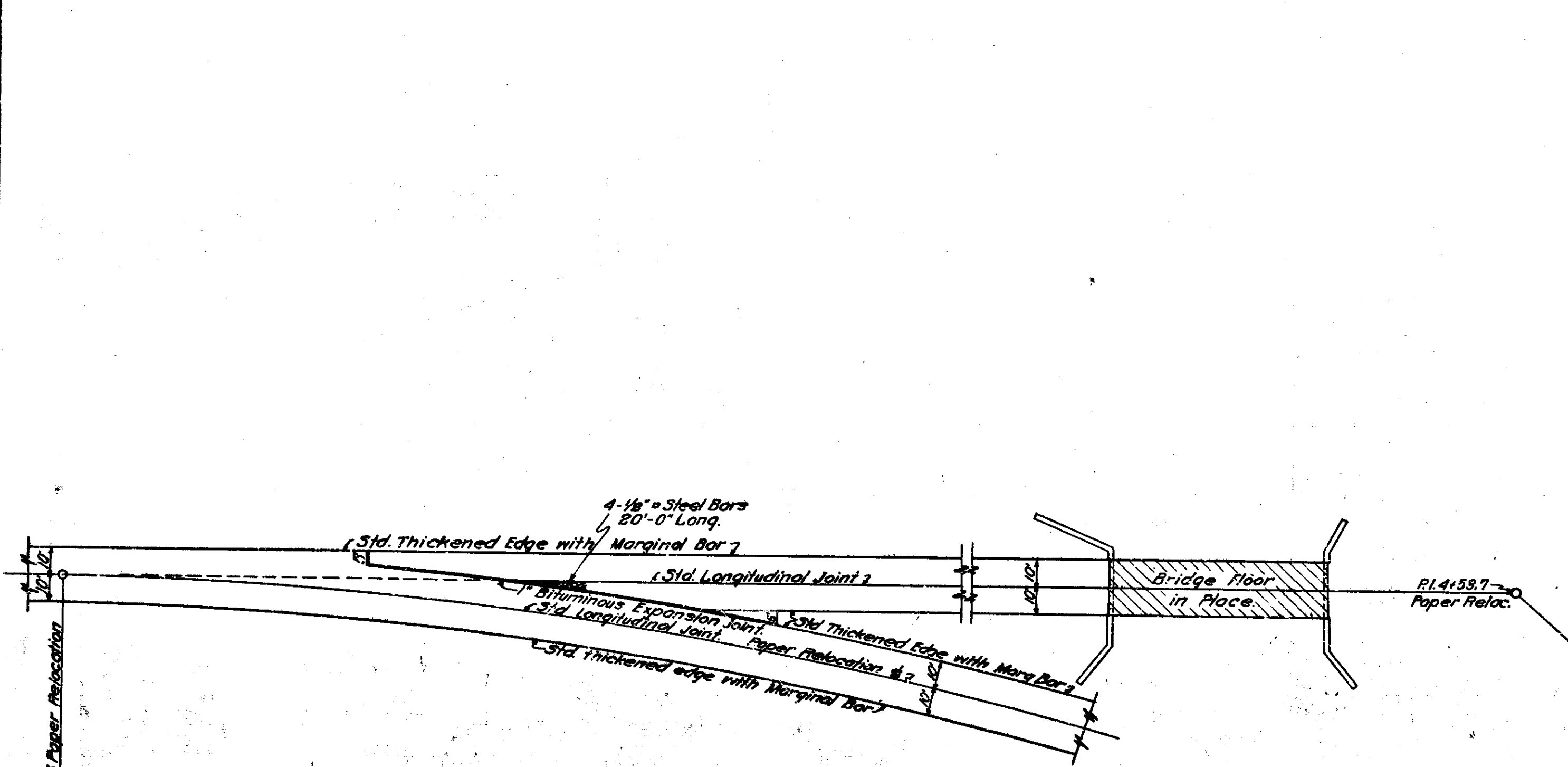
DISTRICT NO.	STATE	FED. AID PROJ. NO.	FISCAL YEAR	SHEET NO.	TOTAL SHEETS
7	IND	E 63	1933	6A	34



DETAIL OF ADDITIONAL PAVEMENT
AT INTERSECTION AT STA. 50+53.0
Scale 1" = 20'

FEDERAL ROAD DISTRICT NO.	STATE	FED. AID FISCAL YEAR	FISCAL YEAR	SHEET NO.	TOTAL SHEETS
7	IND.	E83	1933	7	38

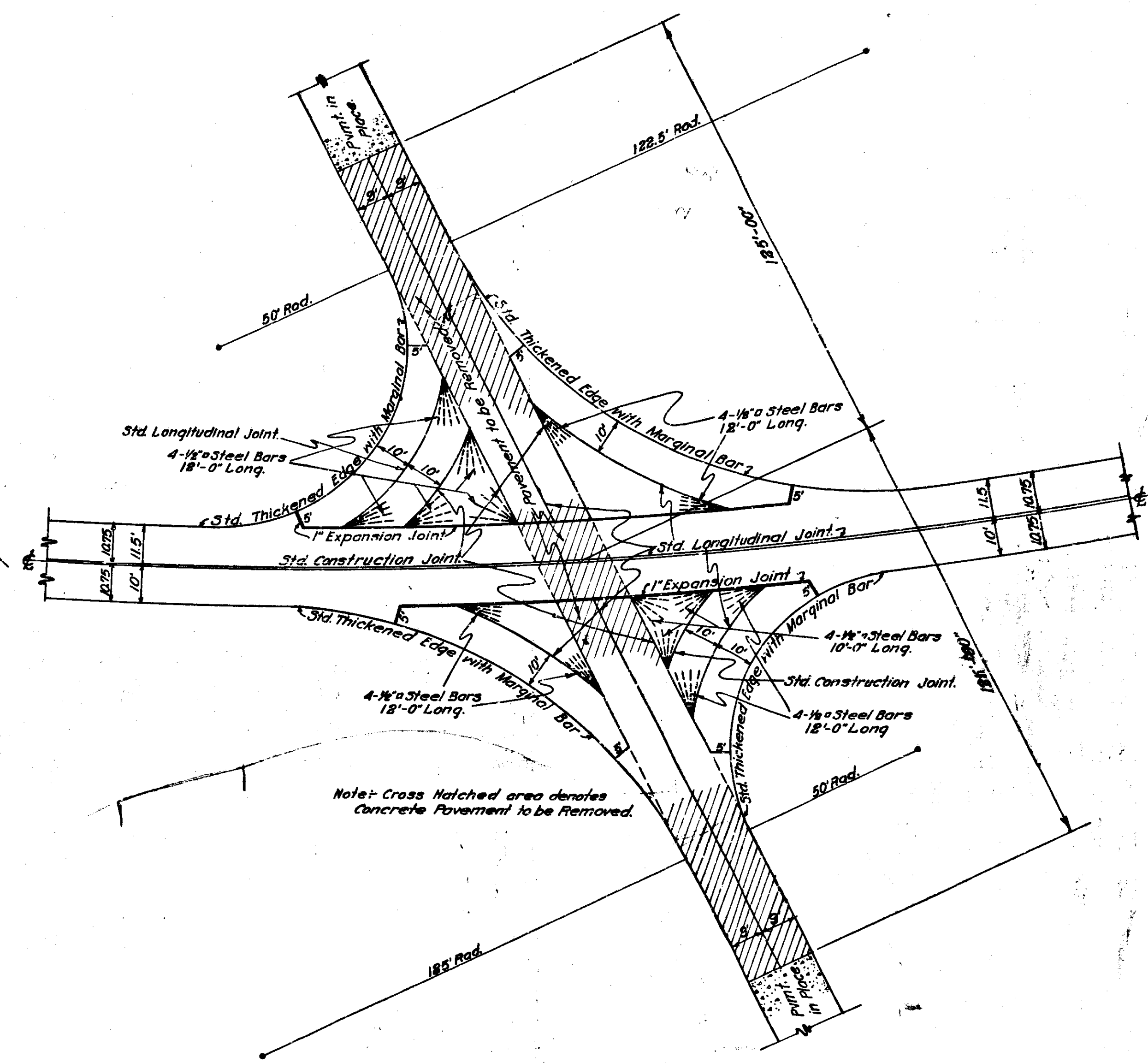
SEC. D



ADDITIONAL QUANTITIES FOR INTERSECTION

Pavement	416.5 Sq. Yds.
Steel	796 Pounds
Shoulders	142 Lin. Ft.
1" Bitum. Expansion Joint	M.B. Lin. Ft.

DETAIL OF INTERSECTION STA. 1+00
Scale 1" = 30'-0"



DETAIL OF INTERSECTION STA. 15+76.3
Scale 1" = 20'-0"

ADDITIONAL QUANTITIES FOR INTERSECTION

Pavement	990.5 Sq. Yds.
Steel	1421 Pounds
Shoulders	191 Lin. Ft.
1" Bitum. Expansion Joint	859 Lin. Ft.
Conc. Pmt. Removal	500 Sq. Yds.

END STR