

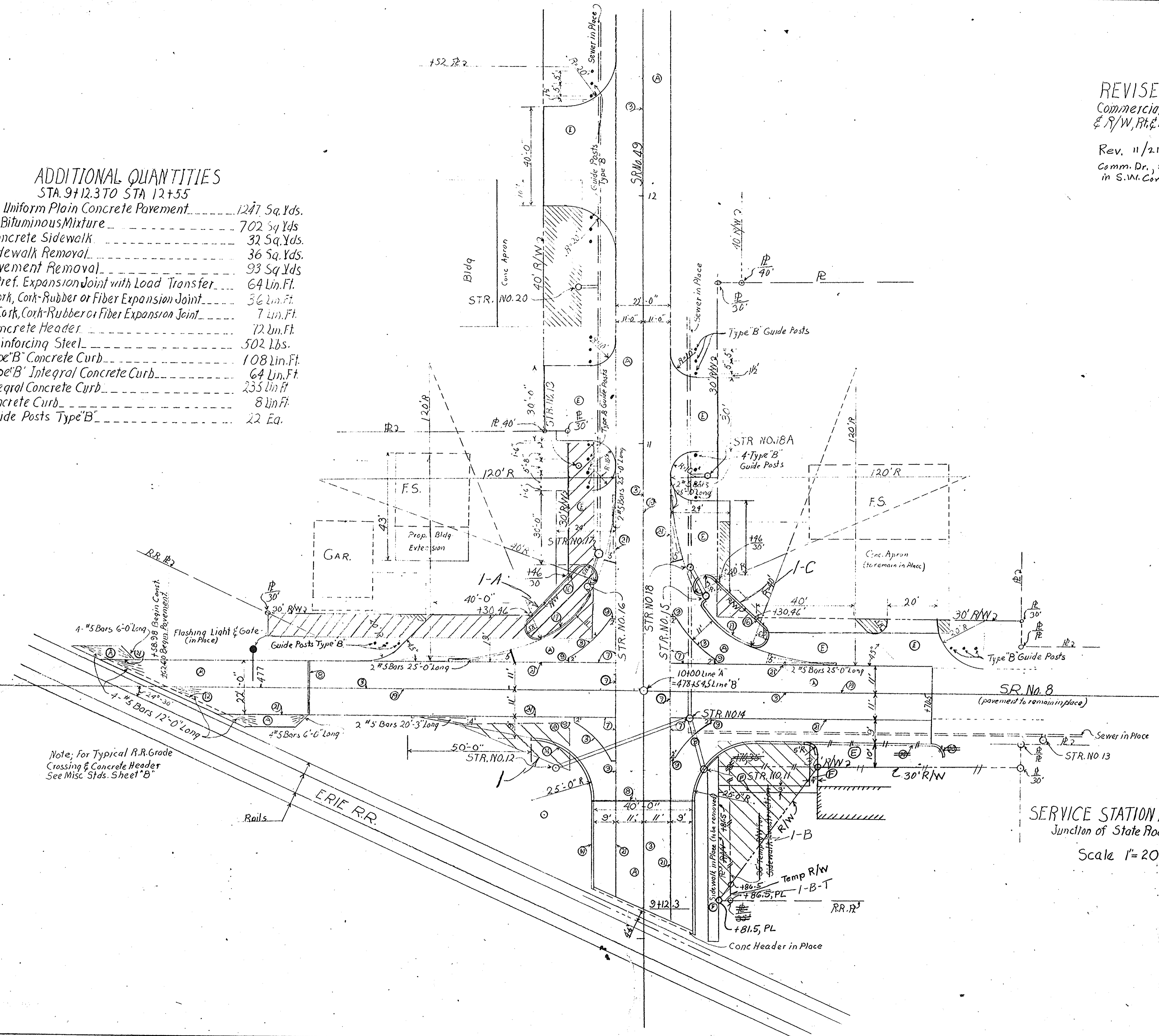
FEDERAL ROAD DIVISION No.	STATE	PROJ. No.	FISCAL YEAR	SHEET No.	TOTAL SHEETS
4	IND.	770	1955	13A	61

REVISED 8-4-55
Commercial Drives Rt. & Lt.
& R/W, Rt. & Lt.

Rev. 11/21/55 per R/W Dept.
Comm. Dr., Sidewalk & R/W
in S.W. Corner

ADDITIONAL QUANTITIES
STA. 9+12.3 TO STA. 12+55

8" Uniform Plain Concrete Pavement	1247 Sq. Yds.
8" Bituminous Mixture	702 Sq. Yds.
Concrete Sidewalk	32 Sq. Yds.
Sidewalk Removal	36 Sq. Yds.
Pavement Removal	93 Sq. Yds.
1" Pref. Expansion Joint with Load Transfer	64 Lin. Ft.
1" Cork, Cork-Rubber or Fiber Expansion Joint	36 Lin. Ft.
1/2" Cork, Cork-Rubber or Fiber Expansion Joint	7 Lin. Ft.
Concrete Header	12 Lin. Ft.
Reinforcing Steel	502 Lbs.
Type "B" Concrete Curb	108 Lin. Ft.
Type "B" Integral Concrete Curb	64 Lin. Ft.
Integral Concrete Curb	235 Lin. Ft.
Concrete Curb	8 Lin. Ft.
Guide Posts Type "B"	22 Ea.



Note: For Typical R.R. Grade Crossing & Concrete Header See Misc. Stds. Sheet "B"

SERVICE STATION APPROACHES
Junction of State Roads No. 8 & No. 49
Scale 1" = 20'

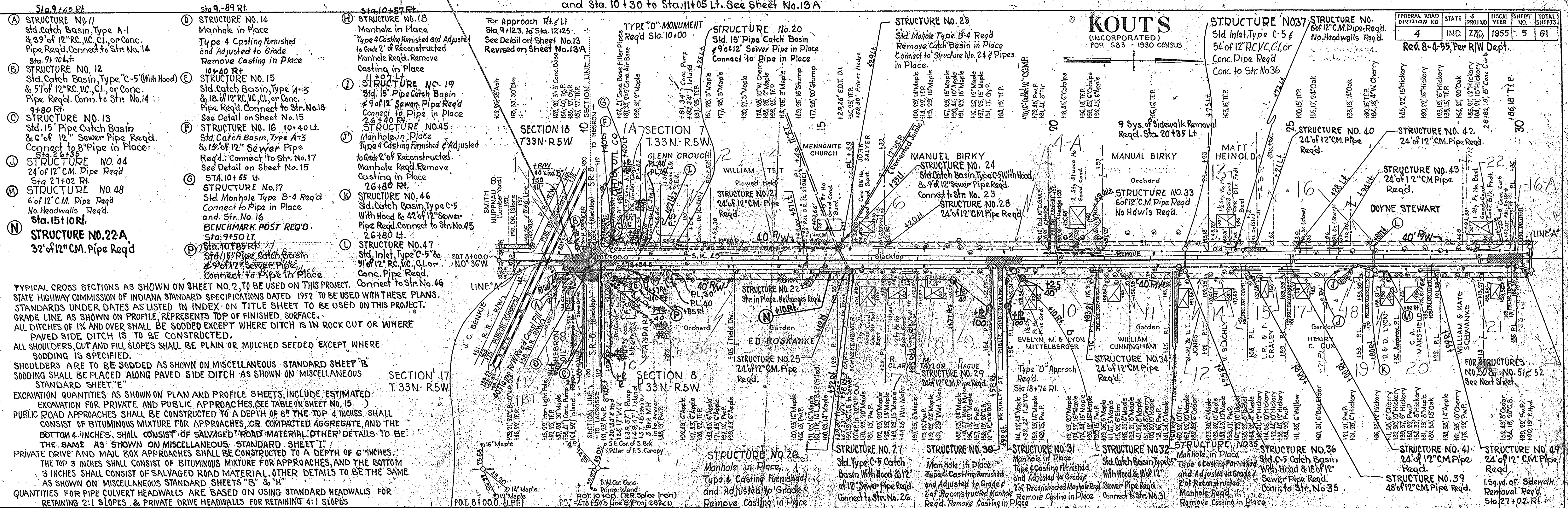
LEGEND

- (3) Longitudinal Joint
- (7) Keyway Joint
- (8) 1" Preformed Expansion Joint with Load Transfer
- (9) 1" Cork, Cork-Rubber or Fiber Expansion Joint
- (10) 1/2" Cork, Cork-Rubber or Fiber Expansion Joint
- (12) Concrete Header
- (13) Concrete Curb
- (14) Integral Concrete Curb
- (16) Concrete Curb Type "B"
- (17) Integral Concrete Curb Type "B"
- (19) 6" Traffic Lane Stripe
- (21) Keyway Construction Joint
- (A) 8" Uniform Plain Concrete Pavement
- (E) 8" Bituminous Mixture
- (F) Concrete Sidewalk
- (Hatched) Pavement Removal

DETAILS

Note: See Detail Sheet for Parcels

Note: For Revised R/W Sta 9+11 to Sta. 11+65 Rt. and Sta. 10+30 to Sta. 11+05 Lt. See Sheet No. 13A



FEDERAL ROAD DIVISION NO.	STATE	S PROJ. NO.	FISCAL YEAR	SHEET NO.	TOTAL SHEETS
4	IND.	77(1)	1955	5	61

Rev. 8-4-55, Per R/W Dept.

- (A) STRUCTURE NO. 11 Std. Catch Basin, Type A-1 & 3' of 12" RC, VC, Cl., or Conc. Pipe Req'd. Connect to Str. No. 14 Sta. 9+70 Lt.
- (B) STRUCTURE NO. 12 Std. Catch Basin, Type "C-5" (With Hood) & 5' of 12" RC, VC, Cl., or Conc. Pipe Req'd. Conn. to Str. No. 14 9+80 Rt.
- (C) STRUCTURE NO. 13 Std. 15" Pipe Catch Basin & 6' of 12" Sewer Pipe Req'd. Connect to 8" Pipe in Place Sta. 26+35
- (D) STRUCTURE NO. 44 24" of 12" C.M. Pipe Req'd Sta. 27+02 Rt.
- (M) STRUCTURE NO. 48 6" of 12" C.M. Pipe Req'd No Headwalls Req'd. Sta. 15+10 Rt.
- (N) STRUCTURE NO. 22A 32" of 12" C.M. Pipe Req'd

- (D) STRUCTURE NO. 14 Manhole in Place Type 4 Casting Furnished and Adjusted to Grade Remove Casting in Place 10+40 Rt.
- (E) STRUCTURE NO. 15 Std. Catch Basin, Type A-3 & 18" of 12" RC, VC, Cl., or Conc. Pipe Req'd. Connect to Str. No. 18 See Detail on Sheet No. 15
- (F) STRUCTURE NO. 16 10+40 Lt. Std. Catch Basin, Type A-3 & 15" of 12" Sewer Pipe Req'd. Connect to Str. No. 17 See Detail on Sheet No. 15
- (G) STA. 10+55 Lt. STRUCTURE NO. 17 Std. Manhole Type B-4 Req'd Connect to Pipe in Place and Str. No. 16 BENCHMARK POST REQ'D. Sta. 9+50 Lt.
- (P) Sta. 10+85 Rt. Std. 15" Pipe Catch Basin & 9' of 12" Sewer Pipe Req'd. Connect to Pipe in Place

- (H) STRUCTURE NO. 18 Manhole in Place Type 4 Casting Furnished and Adjusted to Grade 2' of Reconstructed Manhole Req'd. Remove Casting in Place 11+07 Lt.
- (I) STRUCTURE NO. 19 Std. 15" Pipe Catch Basin & 9' of 12" Sewer Pipe Req'd Connect to Pipe in Place 26+40 Rt.
- (J) Manhole in Place Type 4 Casting Furnished & Adjusted to Grade 2' of Reconstructed Manhole Req'd. Remove Casting in Place 26+80 Rt.
- (K) STRUCTURE NO. 46 Std. Catch Basin, Type C-5 With Hood & 42" of 12" Sewer Pipe Req'd. Connect to Str. No. 45 26+80 Lt.
- (L) STRUCTURE NO. 47 Std. Inlet, Type "C-5" & 3' of 12" RC, VC, Cl., or Conc. Pipe Req'd. Connect to Str. No. 46

- For Approach Rt. Lt. Sta. 9+12.3 to Sta. 12+25 See Detail on Sheet No. 13A Revised on Sheet No. 13A
- TYPE "D" MONUMENT Req'd Sta. 10+00
- STRUCTURE NO. 20 Std. 15" Pipe Catch Basin & 9' of 12" Sewer Pipe in Place Connect to Pipe in Place
- STRUCTURE NO. 23 Std. Manhole Type B-4 Req'd Remove Catch Basin in Place Connect to Structure No. 24 & Pipes in Place
- STRUCTURE NO. 24 Std. Catch Basin, Type C-5 With Hood & 9' of 12" Sewer Pipe Req'd. Connect to Str. No. 23
- STRUCTURE NO. 28 24" of 12" C.M. Pipe Req'd
- STRUCTURE NO. 29 24" of 12" C.M. Pipe Req'd
- STRUCTURE NO. 30 Manhole in Place Type 4 Casting Furnished and Adjusted to Grade 2' of Reconstructed Manhole Req'd. Remove Casting in Place
- STRUCTURE NO. 31 Manhole in Place Type 4 Casting Furnished and Adjusted to Grade 2' of Reconstructed Manhole Req'd. Remove Casting in Place
- STRUCTURE NO. 32 Std. Catch Basin, Type B-5 With Hood & 18" of 12" Sewer Pipe Req'd. Connect to Str. No. 31
- STRUCTURE NO. 33 6" of 12" C.M. Pipe Req'd No Hdws Req'd
- STRUCTURE NO. 34 24" of 12" C.M. Pipe Req'd
- STRUCTURE NO. 35 Manhole in Place Type 4 Casting Furnished and Adjusted to Grade 2' of Reconstructed Manhole Req'd. Remove Casting in Place
- STRUCTURE NO. 36 Std. C-5 Catch Basin With Hood & 18" of 12" Sewer Pipe Req'd. Connect to Str. No. 35
- STRUCTURE NO. 37 Std. Inlet, Type C-5 & 54' of 12" RC, VC, Cl., or Conc. Pipe Req'd Conc. to Str. No. 36
- STRUCTURE NO. 40 24" of 12" C.M. Pipe Req'd
- STRUCTURE NO. 42 24" of 12" C.M. Pipe Req'd
- STRUCTURE NO. 43 24" of 12" C.M. Pipe Req'd
- STRUCTURE NO. 41 24" of 12" C.M. Pipe Req'd
- STRUCTURE NO. 49 24" of 12" C.M. Pipe Req'd
- STRUCTURE NO. 39 48" of 12" C.M. Pipe Req'd
- STRUCTURE NO. 40 159 yds. of Sidewalk Removal Req'd. Sta. 27+02 Rt.

TYPICAL CROSS SECTIONS AS SHOWN ON SHEET NO. 2, TO BE USED ON THIS PROJECT.
 STATE HIGHWAY COMMISSION OF INDIANA STANDARD SPECIFICATIONS DATED 1952 TO BE USED WITH THESE PLANS.
 STANDARDS UNDER DATES AS LISTED IN INDEX ON TITLE SHEET TO BE USED ON THIS PROJECT.
 GRADE LINE AS SHOWN ON PROFILE REPRESENTS TOP OF FINISHED SURFACE.
 ALL DITCHES TO 1% AND OVER SHALL BE SODDED EXCEPT WHERE DITCH IS IN ROCK CUT OR WHERE PAVED SIDE DITCH IS TO BE CONSTRUCTED.
 ALL SHOULDERS, CUT AND FILL SLOPES SHALL BE PLAIN OR MULCHED SEEDS EXCEPT WHERE SODDING IS SPECIFIED.
 SHOULDERS ARE TO BE SODDED AS SHOWN ON MISCELLANEOUS STANDARD SHEET "B"
 SODDING SHALL BE PLACED ALONG PAVED SIDE DITCH AS SHOWN ON MISCELLANEOUS STANDARD SHEET "E"
 EXCAVATION QUANTITIES AS SHOWN ON PLAN AND PROFILE SHEETS, INCLUDE ESTIMATED EXCAVATION FOR PRIVATE AND PUBLIC APPROACHES. (SEE TABLE ON SHEET NO. 15)
 PUBLIC ROAD APPROACHES SHALL BE CONSTRUCTED TO A DEPTH OF 8" THE TOP 4" INCHES SHALL CONSIST OF BITUMINOUS MIXTURE FOR APPROACHES, OR COMPACTED AGGREGATE, AND THE BOTTOM 4" INCHES, SHALL CONSIST OF SALVAGED ROAD MATERIAL. OTHER DETAILS TO BE THE SAME AS SHOWN ON MISCELLANEOUS STANDARD SHEET "I".
 PRIVATE DRIVE AND MAIL BOX APPROACHES SHALL BE CONSTRUCTED TO A DEPTH OF 6" INCHES. THE TOP 3 INCHES SHALL CONSIST OF BITUMINOUS MIXTURE FOR APPROACHES, AND THE BOTTOM 3 INCHES SHALL CONSIST OF SALVAGED ROAD MATERIAL. OTHER DETAILS TO BE THE SAME AS SHOWN ON MISCELLANEOUS STANDARD SHEETS "B" & "H".
 QUANTITIES FOR PIPE CULVERT HEADWALLS ARE BASED ON USING STANDARD HEADWALLS FOR RETAINING 2:1 SLOPES & PRIVATE DRIVE HEADWALLS FOR RETAINING 4:1 SLOPES

LINE	STATION	PERCENT	AMOUNT	REMARKS
SR #8 Line B	Sta. 9+123	25%	690	BEGIN S-PROJ 77(1)
EL. 686.02	VC+290	11.8%	690	56 Sq. Yds. of Sodding Req'd on Lt.
VC+37		11.8%	690	60 Sq. Yds. of Sodding Req'd on Rt.
VC+37		11.8%	690	59 Sq. Yds. of Sodding Req'd
VC+37		11.8%	690	85 Sq. Yds. of Sodding Req'd on Lt.
VC+37		11.8%	690	94 Sq. Yds. of Sodding Req'd on Lt.
VC+37		11.8%	690	57 Sq. Yds. of Sodding Req'd on Lt.

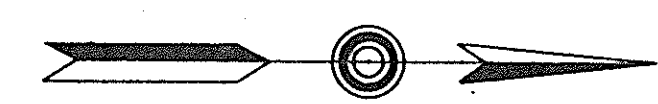
ALL R/W ON THIS SHEET TO BE 40' ON EACH SIDE OF C EXCEPT AS SHOWN

DATE	BY	REVISION
12/31/54	ELIASHANG	1
1/1/55	ELIASHANG	2
1/1/55	ELIASHANG	3

PLAN
 SURVEYED
 PLOTTED
 ALIGNED CHECKED
 RT. OF WAY CHECKED
 NO. 3592-L
 BY ELIASHANG

FEDERAL ROAD DIVISION NO.	STATE	PROJECT NO.	FISCAL YEAR	SHEET NO.	TOTAL SHEETS
4	IND.	72	1955	6	61

KOUTS



30

35

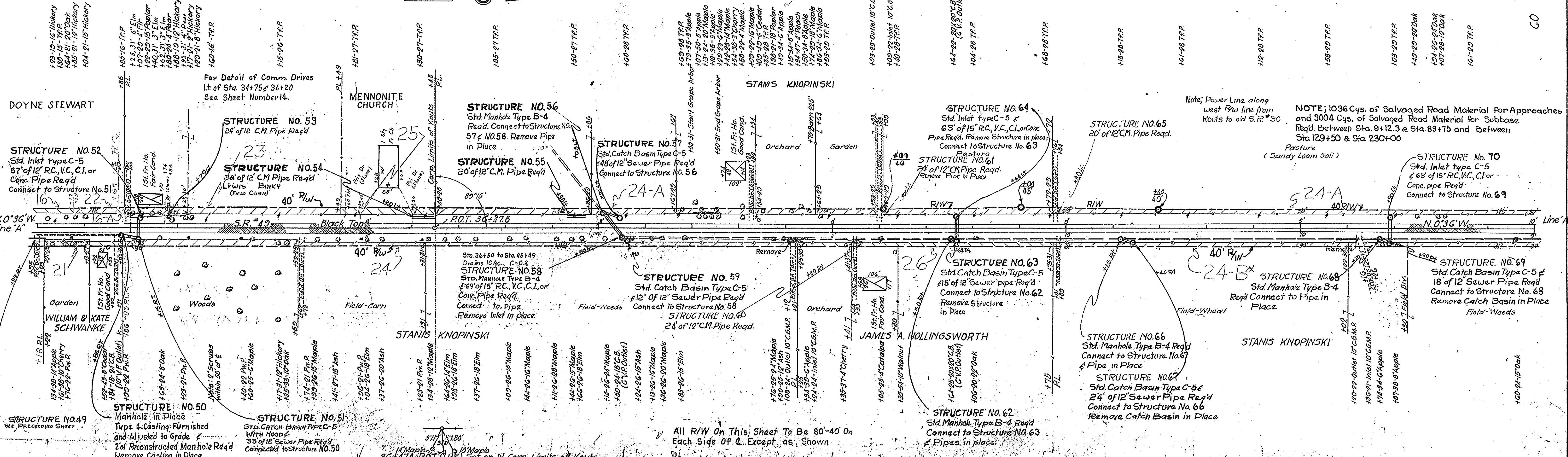
40

45

50

55

60



DATE	BY
12/13/54	B. WAYS
2/13/56	H. NIELSON
6/3/56	F. CLINT

- BM *4A* Elev. 685.65 Bt. Spk. in 12" Hickory 88'R. Sta. 33+07
- BM *5A* Elev. 687.10 Bt. Spk. in 10" Mulberry 60'L. Sta. 42+92
- BM *6A* Elev. 687.15 Bt. Spk. in 10" Oak 70'L. Sta. 49+75
- BM *7A* Elev. 689.20 Bt. Spk. in 24" Maple 75'R. Sta. 56+70

All R/W On This Sheet To Be 80'-40' On Each Side Of C. Except as Shown

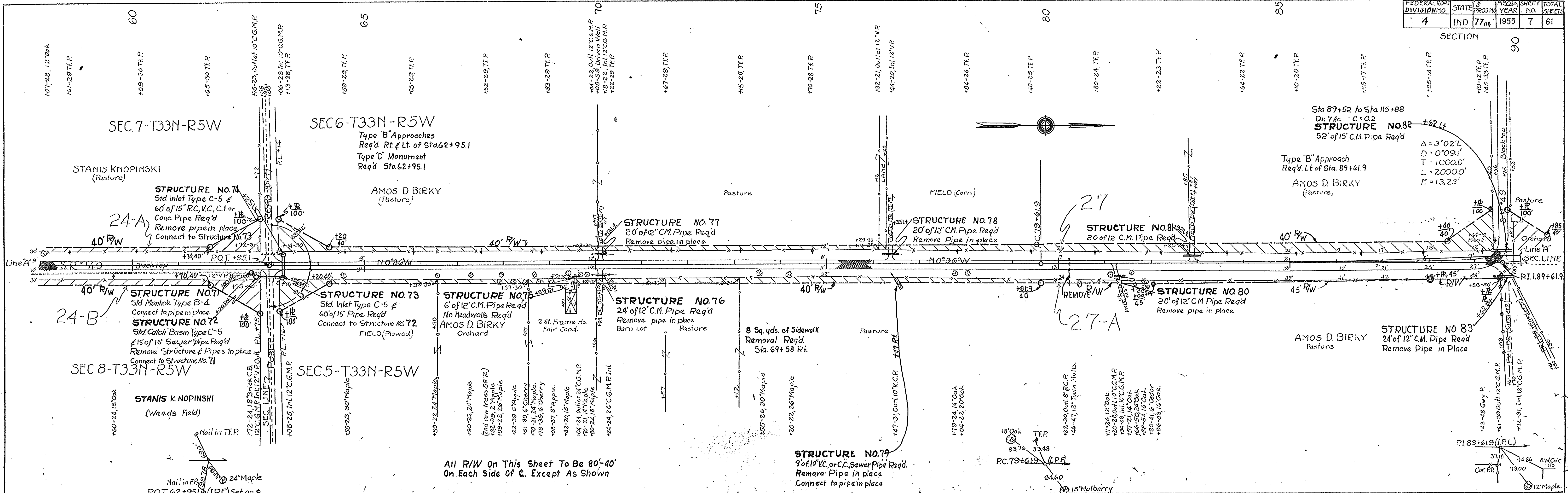
STATION	REMARKS
36+50 to 45+49	Drains 10 Ac. C=0.2
36+47.8	P.O.T. (I.P.F.) Set on N. Corp. Limits of Kouts
1285	Sq. Yds. of Sodding Req'd on Lt.
1115	Sq. Yds. of Sodding Req'd on Rt.

NOTE: 1036 Cys. of Salvaged Road Material for Approaches and 9004 Cys. of Salvaged Road Material for Subbase Req'd. Between Sta. 9+12.3 & Sta. 89+75 and Between Sta. 129+50 & Sta. 230+00

Note: Power Line along west R/W line from Kouts to old S.R. #30

For Detail of Comm. Drives Lt. of Sta. 34+75 & 36+20 See Sheet Number 14.

SECTION 90



BY	DATE
EVANS	12/31/54
H. NOLTING	12/31/54
W. H. BREHOB	12/31/54
PLAN	NO. 2524
NOTE BOOK	NO. 2524
ALIGNED CHECKED	
BY	
DATE	

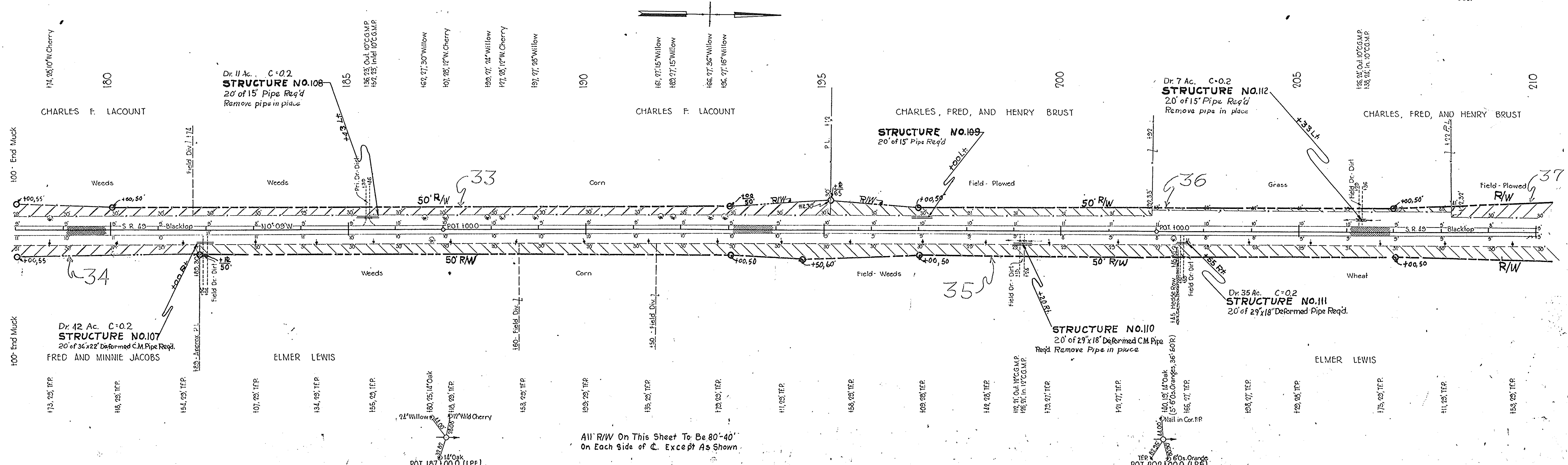
All R/W On This Sheet To Be 80'-40'
On Each Side Of C. Except As Shown

B.M. *8A" Elev. 690.19 Bt Spk. in 12" Hickory 95'R Sta. 62+73
 B.M. *9A" Elev. 691.36 " in S.E. Cor. Conc. step to porch of Ho. 55'R Sta. 69+53
 B.M. *10A" Elev. 693.38 B Spk. in 20" Oak 74'R Sta. 81+69

For Sodding on Rt. See Next Sheet

FEDERAL ROAD DIVISION NO.	STATE	PROJ NO.	FISCAL YEAR	SHEET NO.	TOTAL SHEETS
4	IND.	77(4)	1955	11	61

SEC.



All R/W On This Sheet To Be 80'-40'
On Each Side of C. Except As Shown

PLAN	BY	DATE
PLANNED	H. WILCOX	10/30
NOTED	H. WILCOX	10/30
ALIGNED	H. WILCOX	10/30
CHECKED	H. WILCOX	10/30
REVISION	H. WILCOX	10/30

B.M. No. 20 "A" Elv. 694.74 Boat spike in 12" W. Cherry, 150' L. of Sta. 185+50.
 B.M. No. 21 "A" Elv. 701.63 " " " 12" Oak, 210' L. of Sta. 195+12.
 B.M. No. 22 "A" Elv. 703.06 " " " 8" Or. Orange, 90' R. of Sta. 202+15.

38 Sys of Sodding Req'd on Lt