

INDEX

SHEET NO. 1	TITLE SHEET
SHEET NO. 2	STANDARD CROSS SECTIONS
SHEET NO. 3	TYPICAL CROSS SECTIONS
SHEET NO. 4-23	PLAN AND PROFILE
SHEET NO. 24-26	BRIDGE AND CULVERT DATA—ESTIMATE OF QUANTITIES
SHEET NO. 27-28	MISCELLANEOUS STANDARDS SHEET "A" REV. 3/6/50; SHEET "B" REV. 3/23/50
SHEET NO. 29-31	MISCELLANEOUS STANDARDS SHEET "C" REV. 3/25/47; SHEET "D" REV. 2/19/50; SHEET "E" REV. 1/2/50
SHEET NO. 32-33	MISCELLANEOUS STANDARDS SHEET "H" REV. 4/29/52; SHEET "I" ADOPTED FEB. 1949
SHEET NO. 34-35	MISCELLANEOUS STANDARDS SHEET "J" REV. 10-20-49; SHEET "K" ADOPTED FEB. 1949
SHEET NO. 36	STD. STRUCTURE CONNECTIONS FOR EXTENSIONS
SHEET NO. 37	SKEWED END π WING DETAILS FOR STD. RC BOX CULVERTS, 30° SKEW, REV. 1/30/47
SHEET NO. 38	STD. REINF. CONC. CULV.—SLAB TOP TYPE UNDER FILL 10'-0" TO 5'-0" (10'-0" TO 20'-0" SPAN)
SHEET NO. 39	STD. REINF. CONC. CULV.—SLAB TOP TYPE WITHOUT FILL 10'-0" TO 20'-0" SPAN) 15' SKEW
SHEET NO. 40	STD. REINF. CONC. CULV.—SLAB TOP TYPE UNDER FILL 14'-0" TO 5'-0" (10'-0" TO 20'-0" SPAN) 15' SKEW
SHEET NO. 41	STD. REINF. CONC. CULV.—SLAB TOP TYPE WITHOUT FILL (10'-0" TO 20'-0" SPAN) 30' SKEW
SHEET NO. 42	STD. REINF. CONC. CULV.—SLAB TOP TYPE UNDER FILL 10'-0" TO 5'-0" (10'-0" TO 20'-0" SPAN) 30' SKEW
SHEET NO. 43	STD. REINF. CONC. CULV.—SLAB TOP TYPE WITHOUT FILL (10'-0" TO 20'-0" SPAN) 45' SKEW
SHEET NO. 44	STD. CONC. SLAB RAILROAD GRADE CROSSING
SHEET NO. 45	ALTERNATE STD. CONC. SLAB RAILROAD GRADE CROSSING
SHEET NO. 46	DATA FOR SUPER-ELEVATING AND WIDENING OF CURVES
SHEET NO. 47-49	STD. DETECTOR SIGNS SHEET "1", ADOPTED 4/1/51; SHEET "2", REV. 5-1-51
SHEET NO. 50-52	CROSS SECTIONS

FEDERAL ROAD DISTRICT NO.	STATE	PROJECT NO.	FISCAL YEAR	SHEET NO.	TOTAL SHEETS
8	IND.	124(3)	1952	1	369

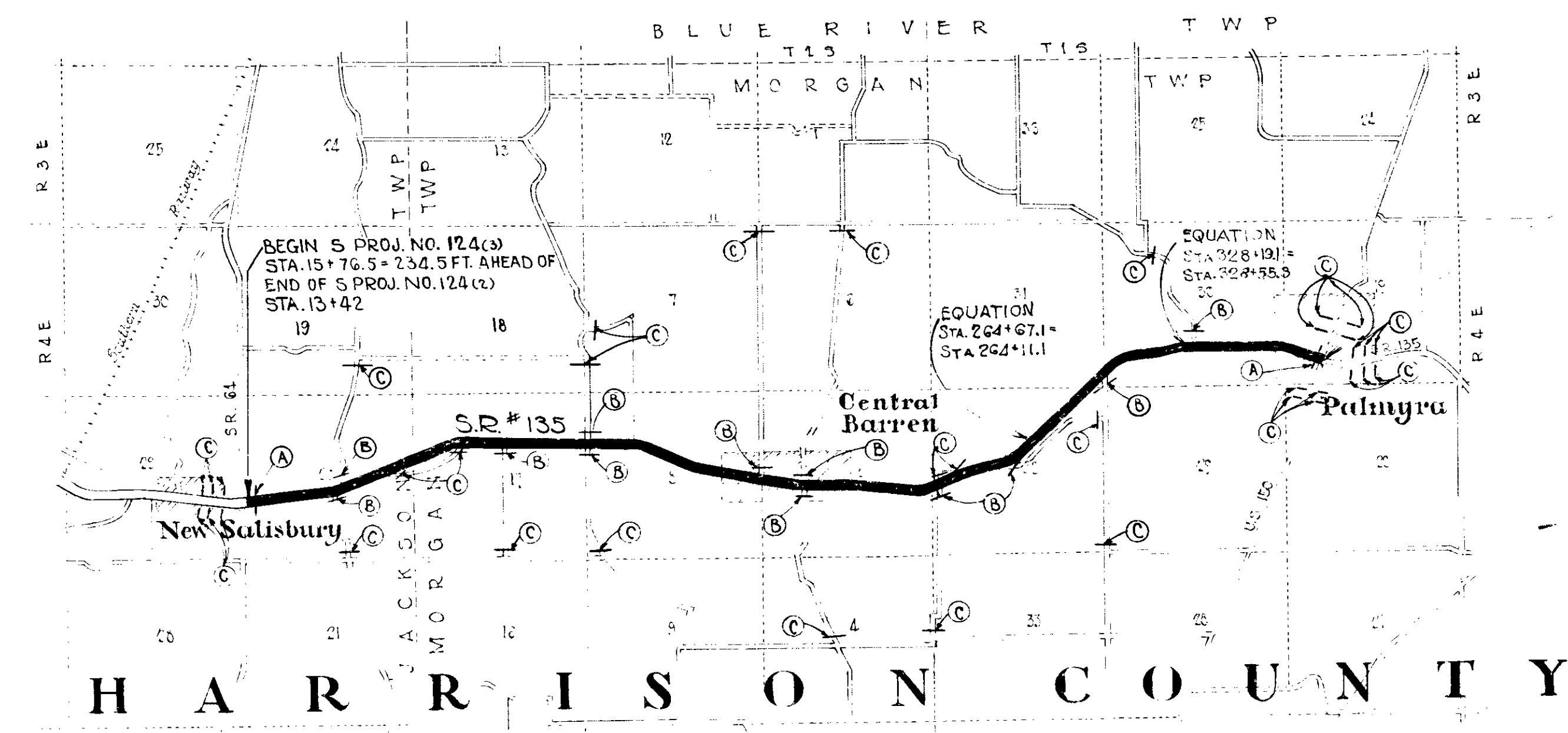
**STATE OF INDIANA
STATE HIGHWAY COMMISSION**

**PLAN AND PROFILE OF PROPOSED
STATE HIGHWAY
S PROJECT NO. 124 (3)
CORYDON-PALMYRA ROAD**

BEGINNING AT A POINT ON S.W. COR. NO. 135 APPROXIMATELY 51.5 FT. NORTH OF THE SOUTH LINE OF SECTION 20, T2S-R4E AND EXTENDING IN A NORTHERLY DIRECTION TO A POINT APPROXIMATELY 1207 FT. NORTH OF THE SOUTH LINE OF SECTION 13, T1S-R4E ALL IN HARRISON COUNTY.

GROSS LENGTH: 0.673 MI.
NET LENGTH: 0.673 MI.
SCALES:
PLAN LONG: 1" = 100' TRANS: 1" = 100' PROFILE HORIZ: 1" = 100' VERT: 1" = 10' MAX. GRADE 3.20%

LEGEND OF SIGNS
A Std. Barricade Type "A"
B Std. Barricade Type "B"
C Typical Sign Standards



DATE	SHEET NO.	REVISION
3-8-52	1	1A
1-26-53	5, 6, 11, 2, 3, 4, 5, 6, 7, 8, 9, 10, 11, 12, 13, 14, 15, 16, 17, 18, 19, 20, 21, 22, 23, 24, 25, 26, 27, 28, 29, 30, 31, 32, 33, 34, 35, 36, 37, 38, 39, 40, 41, 42, 43, 44, 45, 46, 47, 48, 49, 50, 51, 52	R/W
1-28-53	1173-185 Incl.	R/W

END OF S. PROJ. 124 (3)
STA. 367+82

APPROVED AND ADOPTED Sept. 24, 1952
By STATE HIGHWAY COMMISSION OF INDIANA
Samuel C. Hadden
CHAIRMAN, STATE HIGHWAY COMMISSION OF INDIANA
APPROVED Sept. 24, '52
Rand H. Bowers
CHIEF ENGINEER, STATE HIGHWAY COMMISSION OF INDIANA

DEPARTMENT OF COMMERCE
BUREAU OF PUBLIC ROADS

RECOMMENDED FOR APPROVAL

DISTRICT ENGINEER _____ DATE _____

APPROVED _____

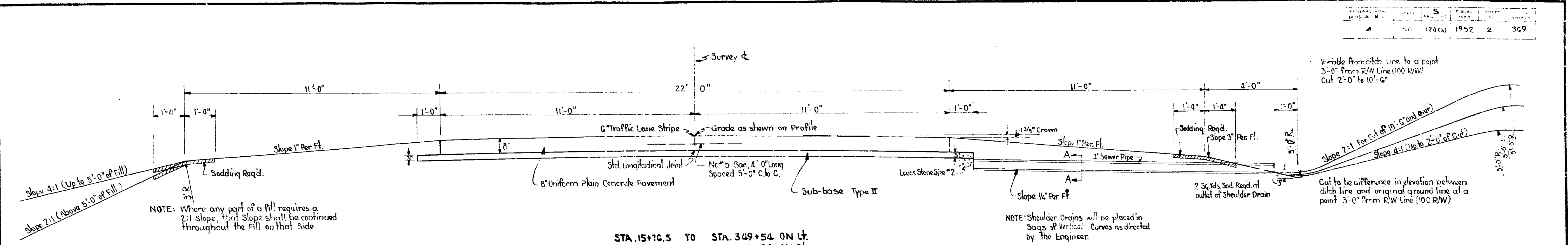
DIVISION ENGINEER _____ DATE _____

RECOMMENDED FOR APPROVAL 9-24-52
W. H. Behrens
ENGINEER OF ROAD DESIGN, STATE HIGHWAY COMMISSION OF INDIANA

STATE HIGHWAY COMMISSION OF INDIANA
STANDARD SPECIFICATIONS DATED 1952
TO BE USED WITH THESE PLANS.

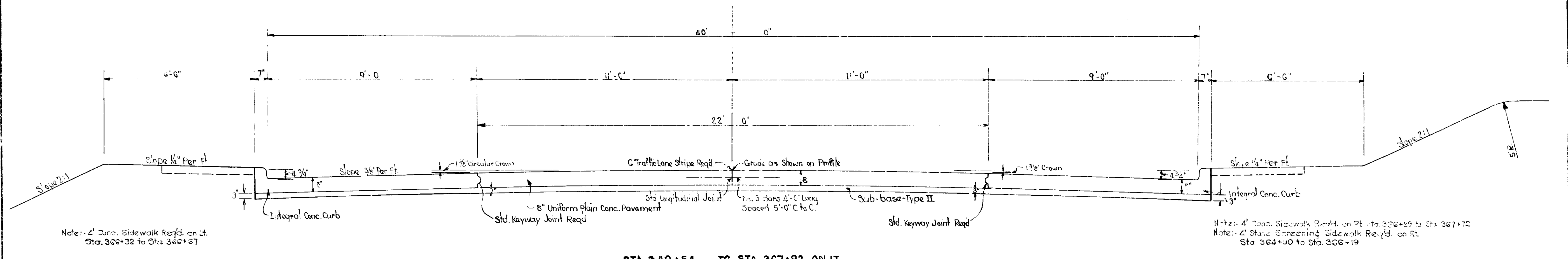
Scale 1" = 3000'

PROJECT NO.	5
DATE	1952
NO.	2
369	



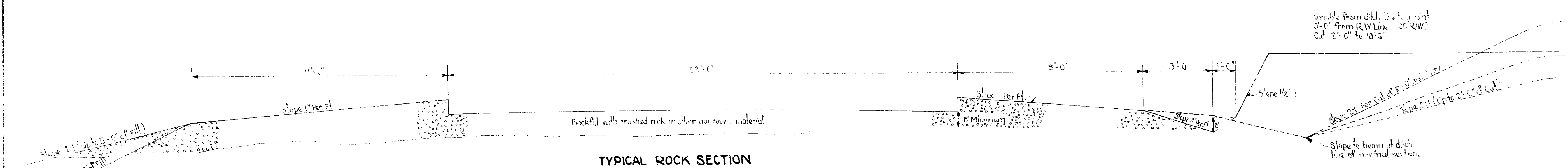
STA. 15+76.5 TO STA. 349+54 ON LT.
 STA. 15+76.5 TO STA. 354+38 ON RT.

NOTE: Shoulder Drains will be placed in bays of vertical curves as directed by the Engineer.
 Pipe screens as shown on Misc. S&E Sheet "1" are req'd. on inlet and outlet of shoulder drain pipe.



STA. 349+54 TO STA. 367+92 ON LT.
 STA. 354+38 TO STA. 367+92 ON RT.

Note: 4' Conc. Sidewalk Req'd. on Rt. Sta. 366+19 to Sta. 367+10
 Note: 4' Stone Screening Sidewalk Req'd. on Rt. Sta. 366+10 to Sta. 366+19



TYPICAL ROCK SECTION

TYPICAL CROSS SECTIONS

SCALE 1/2"=1'

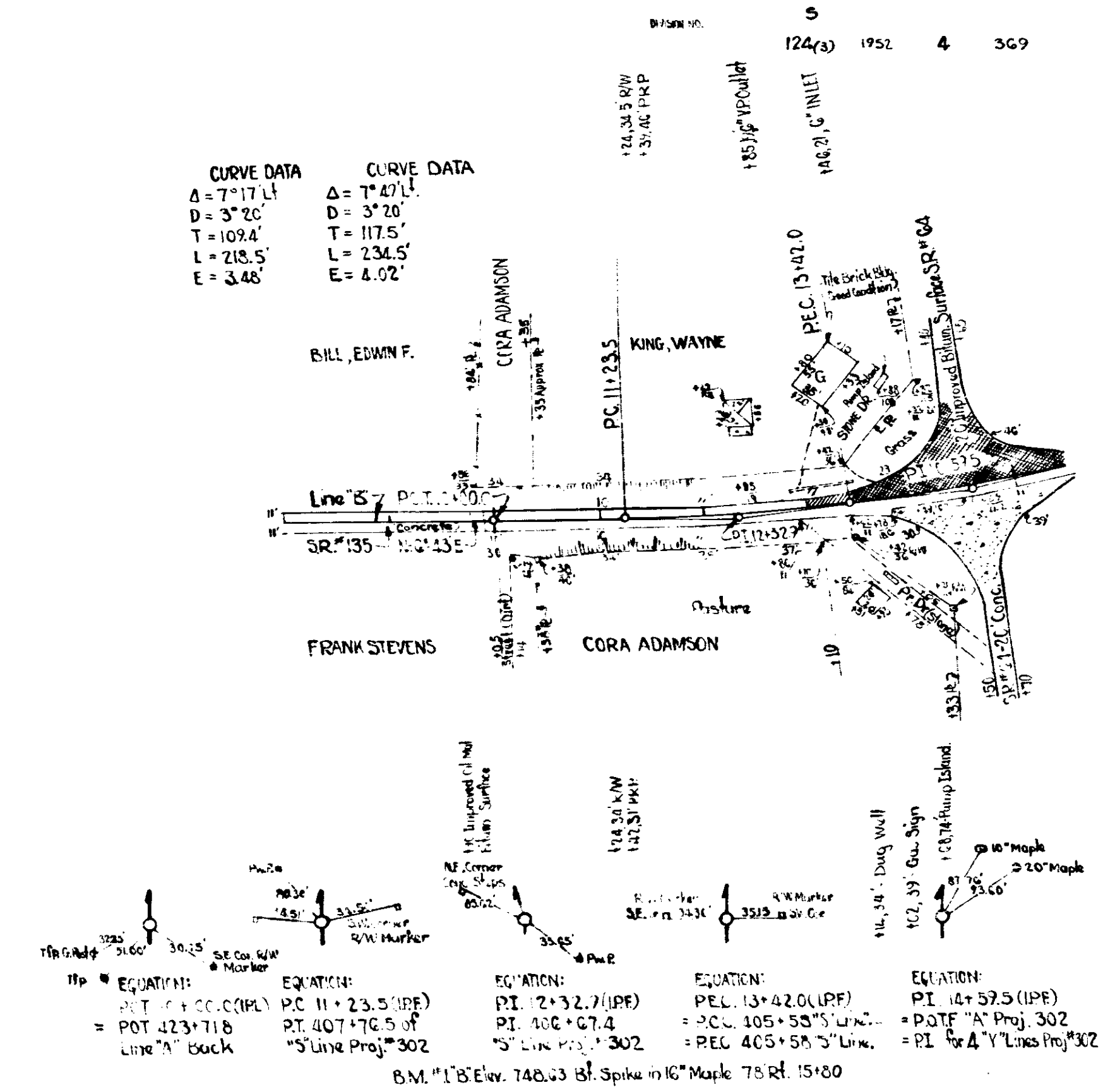
DESIGNED BY: *Ralph Bower* 7/24/52
 CHECKED BY: *Samuel C. Hadden* 7/24/52
 APPROVED FOR APPROVAL: *W. H. Schum* 9-24-52

4-91
6-52
RICHNER
J.D. YOUNG
P.E. REGISTERED

55151

4-91
6-52
RICHNER
J.D. YOUNG
P.E. REGISTERED

55151



TYPICAL CROSS SECTIONS AS SHOWN ON SHEET No. 2 TO BE USED ON THIS PROJECT.

STATE HIGHWAY COMMISSION OF INDIANA STANDARD SPECIFICATIONS DATED 1952 TO BE USED WITH THESE PLANS. STANDARDS UNDER DATES AS LISTED IN INDEX ON TITLE SHEET TO BE USED ON THIS PROJECT.

GRADE LINE AS SHOWN ON PROFILE REPRESENTS TOP OF FINISHED SURFACE.

ALL DITCHES OF 1% AND OVER SHALL BE SODDED EXCEPT WHERE DITCH IS IN ROCK CUT OR WHERE PAVED SIDE DITCH IS TO BE CONSTRUCTED.

ALL SHOULDERS, CUT AND FILL SLOPES SHALL BE PLAIN OR MACHED SEEDD EXCEPT WHERE SODDING IS SPECIFIED.

SHOULDERS ARE TO BE SODDED AS SHOWN ON MISCELLANEOUS STANDARD SHEET "D".

SODDING SHALL BE PLACED ALONG PAVED SIDE DITCH AS SHOWN ON MISCELLANEOUS STANDARD SHEET "E".

EXCAVATION QUANTITIES AS SHOWN ON PLAN AND PROFILE SHEETS INCLUDE ESTIMATED EXCAVATION FOR PRIVATE AND PUBLIC APPROACHES, SEE TABLE ON SHEET NO. 23.

WHERE EXISTING SURFACE IS LOCATED OUTSIDE THE LIMITS OF NEW CONSTRUCTION BETWEEN STA. 63+00 & 65+00, STA. 143+00 & 155+00, STA. 156+00 & 158+00, STA. 255+00 & 258+00 AND STA. 300+00 & 318+00 THE CONTRACTOR WILL BE REQUIRED TO REMOVE THE PRESENT ROADWAY AND BASE AS DIRECTED BY THE ENGINEER.

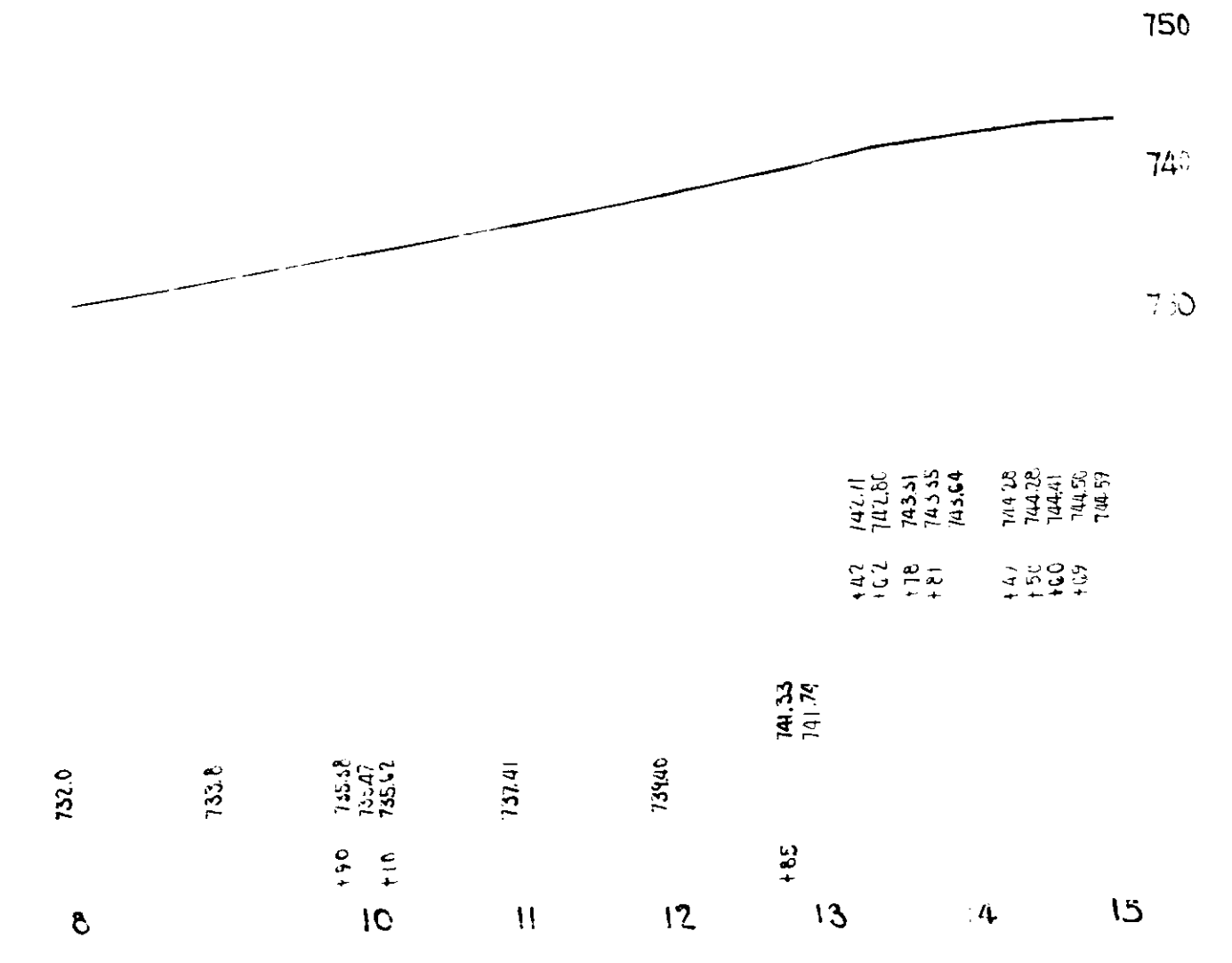
CURVES OF 1% AND OVER SHALL BE SUPERELEVATED ACCORDING TO THE STANDARDS OF 1932.

ALL CORRUGATED METAL PIPE USED ON THIS PROJECT SHALL BE BITUMINOUS COATED.

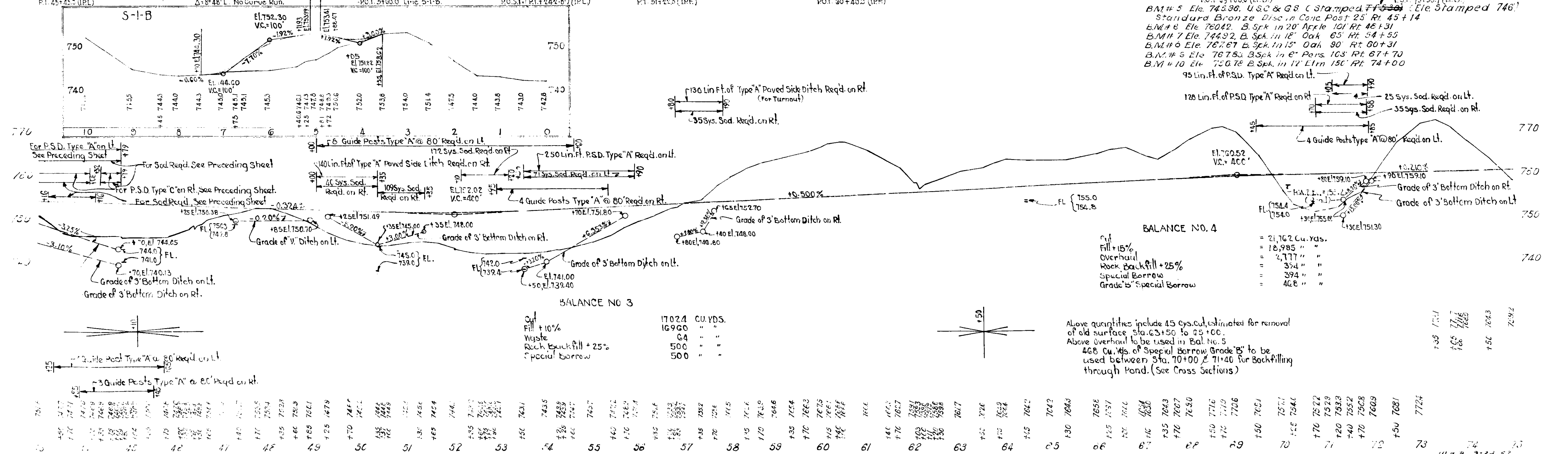
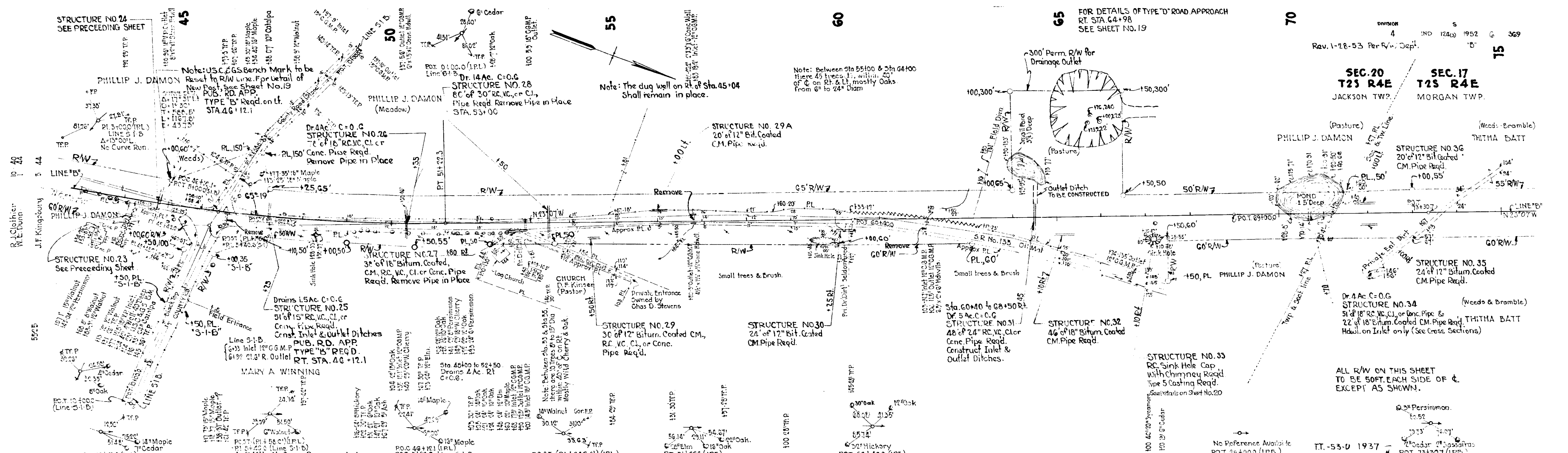
PUBLIC ROAD, PRIVATE DRIVE & MAIL BOX APPROACHES SHALL BE CONSTRUCTED OF SALVAGED ROAD MATERIAL. OTHER DETAILS TO BE SAME AS SHOWN ON MISCELLANEOUS STANDARD SHEETS B, H & I.

SUCH PART OF EXISTING DOWNSPOUT DRAINS THAT ARE DISTURBED BY PLACING THE CURB SHALL BE REPLACED AS DIRECTED BY THE ENGINEER.

QUANTITIES FOR PIPE CULVERT HEADWALLS ARE BASED ON USING STD. HEADWALLS FOR RETAINING 2:1 SLOPES AND PRIVATE DRIVE HEADWALLS FOR RETAINING 4:1 SLOPES. THE QUANTITIES OF COMMON EXCAVATION SHOWN IN THE ESTIMATE OF QUANTITIES ON SHEET NO. 26 INCLUDES 7500 CYS. (2500 CYS. OF ACTUAL CUT) ESTIMATED FOR SINKHOLE INVESTIGATION. THE AMOUNT OF ACTUAL CUT ESTIMATED FOR EACH SINKHOLE IS SHOWN IN COLUMN 14 OF STRUCTURE DATA ON SHEET NO. 24, 25 & 26.



3-10-52



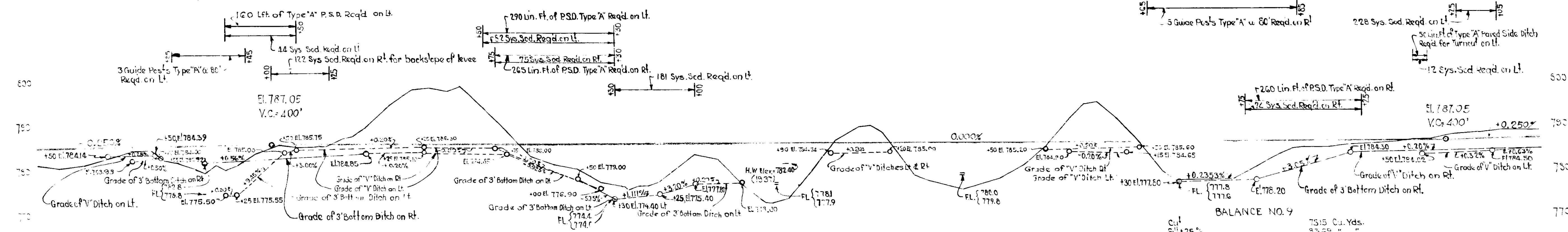
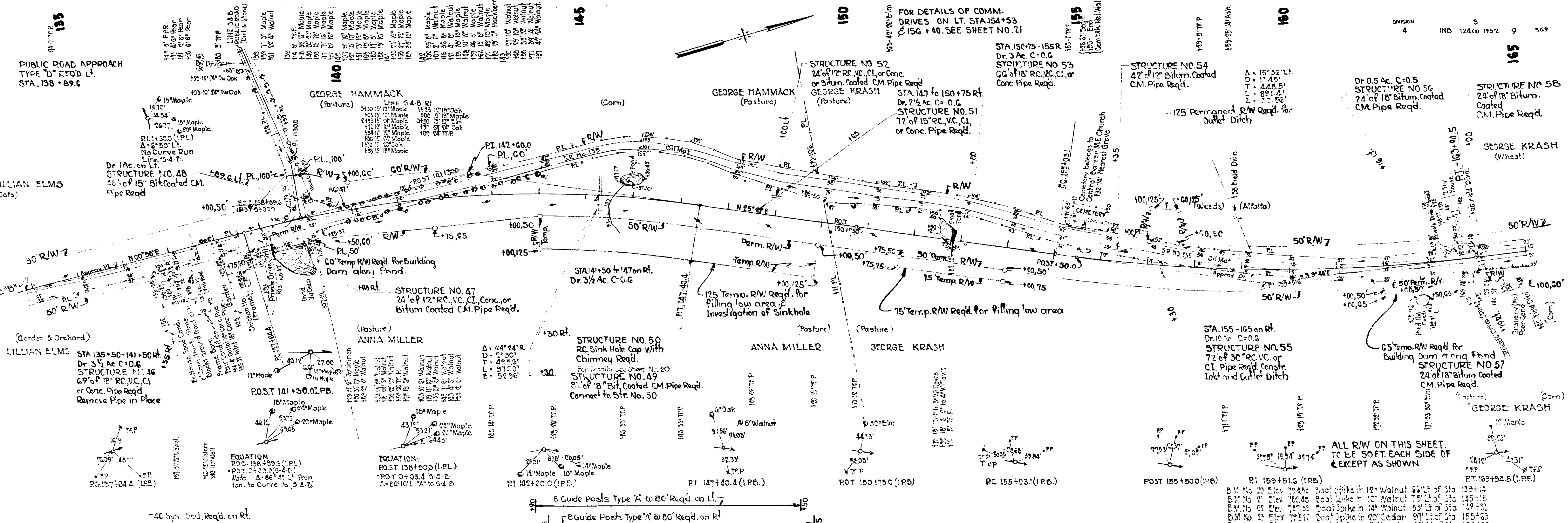
FOR DETAILS OF TYPE "D" ROAD APPROACH
 RE STA 64+98
 SEE SHEET NO. 19

SEC. 20 T25 R4E JACKSON TWP.
 SEC. 17 T25 R4E MORGAN TWP.

No Reference Available
 POT 24+000 (L.P.D.)
 IT-53-0 1937 - POT 73+007 (L.P.D.)
 B.M. # 5 Ele. 743.96 U.S.C. & G.S. (Stamped) ~~743.96~~ Ele. Stamped 746'
 Standard Bronze Disc. in Conc. Post 25" R. 45+14
 B.M. # 6 Ele. 760.42 B.S. in 12" Oak 121' R. 48+131
 B.M. # 7 Ele. 744.92 B.S. in 12" Oak 65' R. 54+55
 B.M. # 8 Ele. 782.67 B.S. in 12" Oak 90' R. 60+31
 B.M. # 9 Ele. 767.53 B.S. in 6" Pers. 103' R. 67+70
 B.M. # 10 Ele. 730.78 B.S. in 12" Elm 150' R. 74+00
 95 Lin. Ft. of P.S.D. Type "A" Req'd on Lt.

Above quantities include 45 Cys. Est. for removal of old surface Sta. 63+50 to 25+00
 Above overhaul to be used in Bal. No. 3
 408 Cu. Yds. of Special Borrow Grade "B" to be used between Sta. 70+00 & 71+00 for Backfilling through Pond. (See Cross Sections)

73	73.00	73.00
74	74.00	74.00
75	75.00	75.00
76	76.00	76.00
77	77.00	77.00
78	78.00	78.00
79	79.00	79.00
80	80.00	80.00
81	81.00	81.00
82	82.00	82.00
83	83.00	83.00
84	84.00	84.00
85	85.00	85.00
86	86.00	86.00
87	87.00	87.00
88	88.00	88.00
89	89.00	89.00
90	90.00	90.00
91	91.00	91.00
92	92.00	92.00
93	93.00	93.00
94	94.00	94.00
95	95.00	95.00
96	96.00	96.00
97	97.00	97.00
98	98.00	98.00
99	99.00	99.00
100	100.00	100.00



BALANCE NO. 8

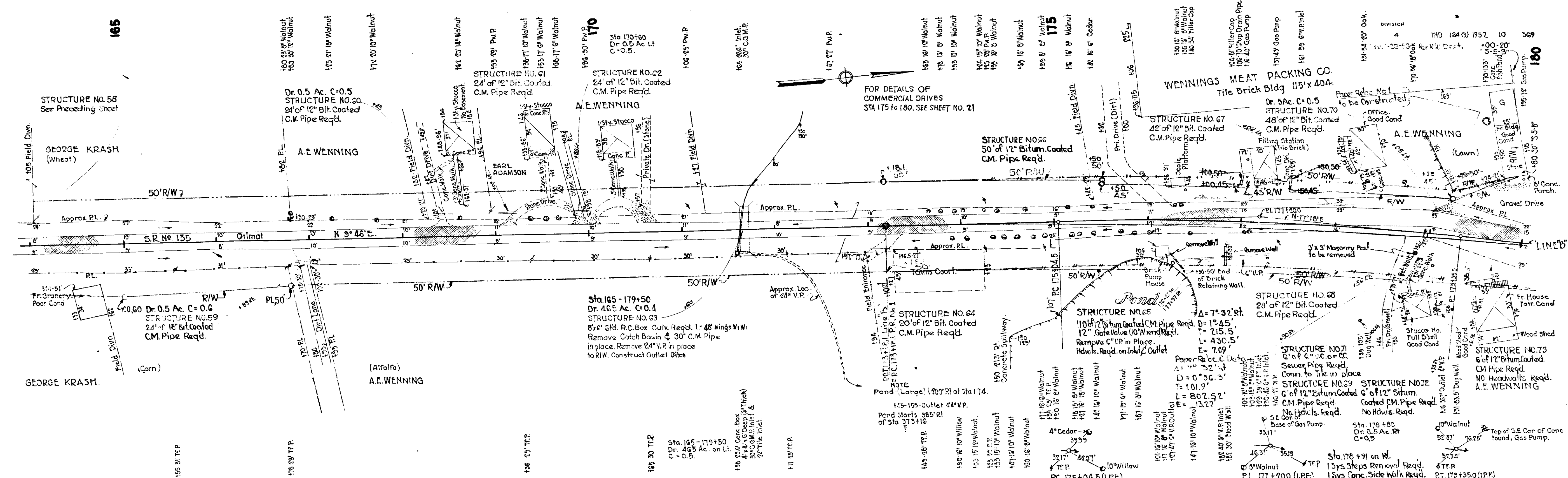
Cut	13,445
Fill + 15%	20,016
Rock Backfill + 25%	296
Borrow	23,793
Special Borrow	3,969

Above quantities include 44 Cys. Cut & 44 Cys. Fill for tearing down old fill.
 Above borrow to be obtained from Balance No. 7
 Above quantities include 220 Cys. Cut estimated for removal of old surface Sta. 153+00 to 143+00

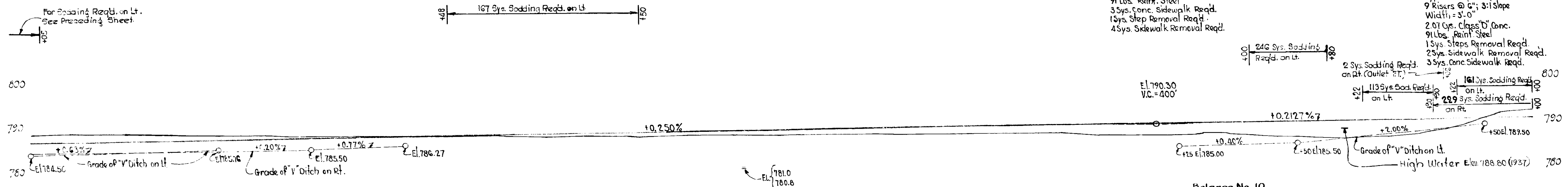
135	136	137	138	139	140	141	142	143	144	145	146	147	148	149	150	151	152	153	154	155	156	157	158	159	160	161	162	163	164	165
-----	-----	-----	-----	-----	-----	-----	-----	-----	-----	-----	-----	-----	-----	-----	-----	-----	-----	-----	-----	-----	-----	-----	-----	-----	-----	-----	-----	-----	-----	-----

u.n.3 3-24-52

1: 21
 4444
 55257
 5 24
 5 21 41
 65264



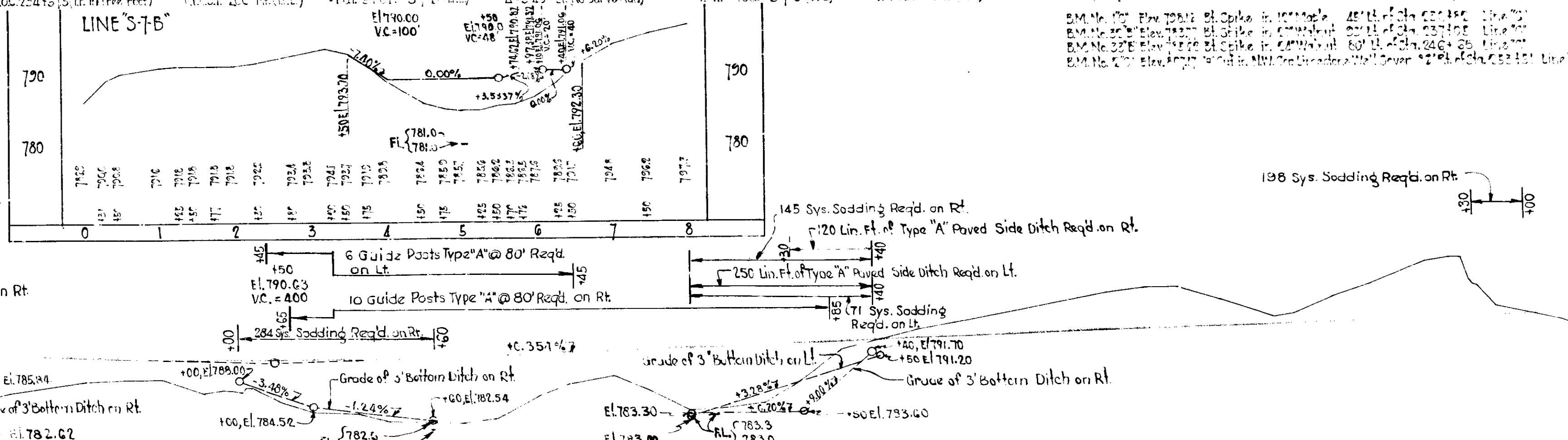
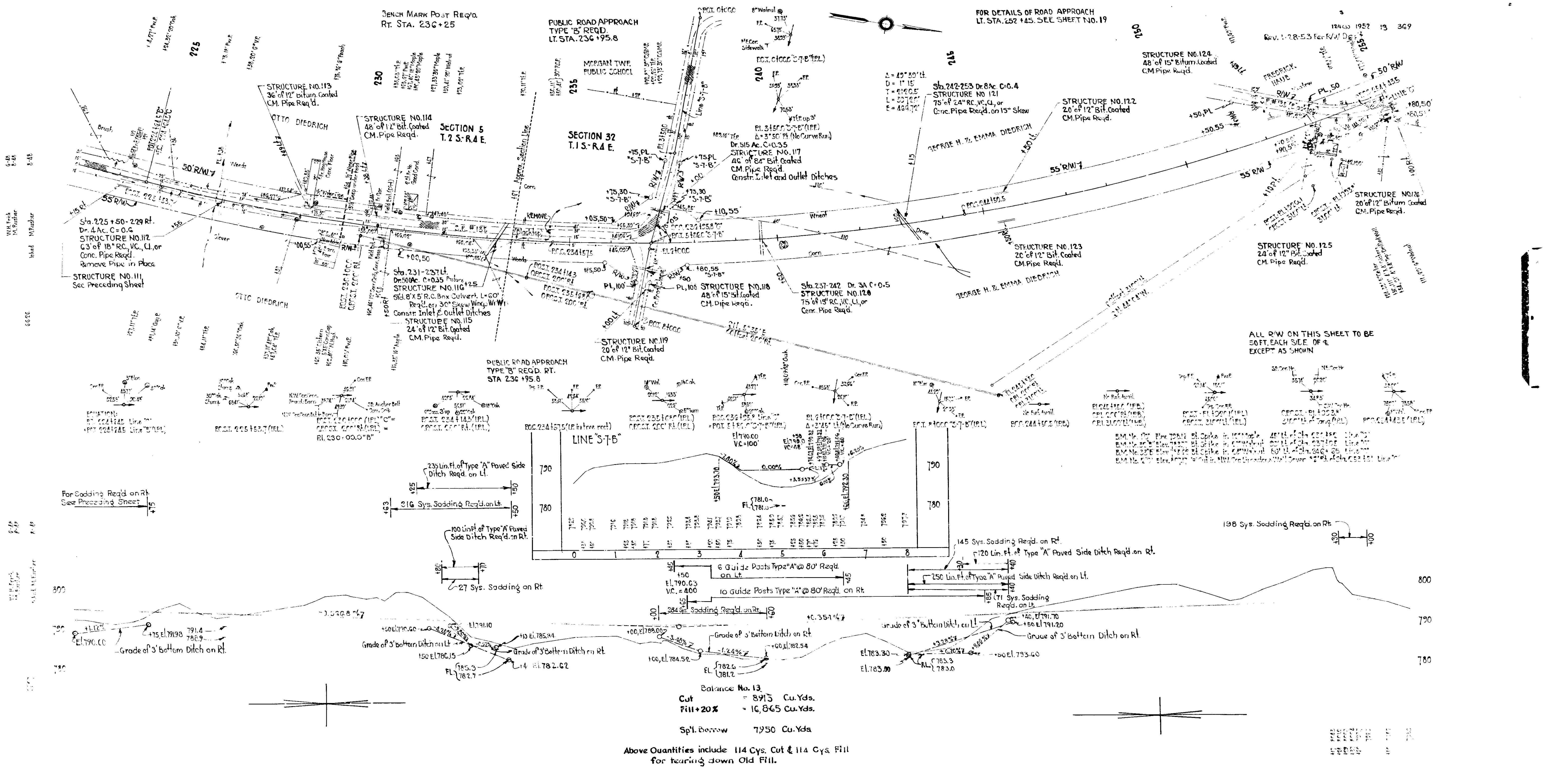
ALL R/W ON THIS SHEET TO BE AS SHOWN
 STA. 164+00 TO STA. 173+18.1 TO BE MEASURED
 FROM SURVEY @
 STA. 173+18.1 TO STA. 180+00 TO BE MEASURED
 FROM PAPER RELOCATION @



Balance No. 10

Cut	=	5270	ys
Fill + 25%	=	5200	"
Waste	=	20	"

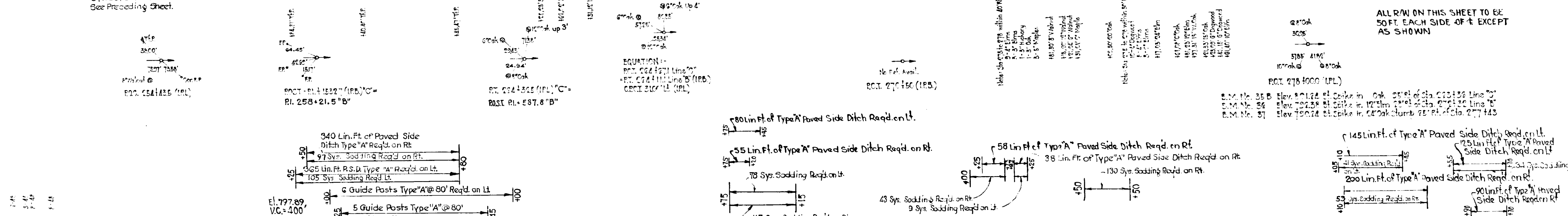
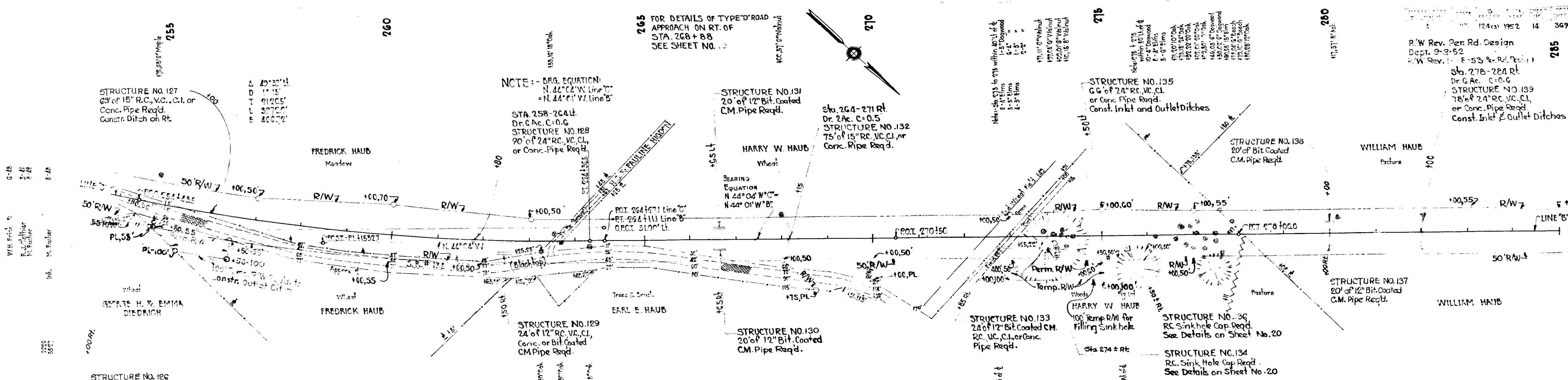
W.D. 9-24-52



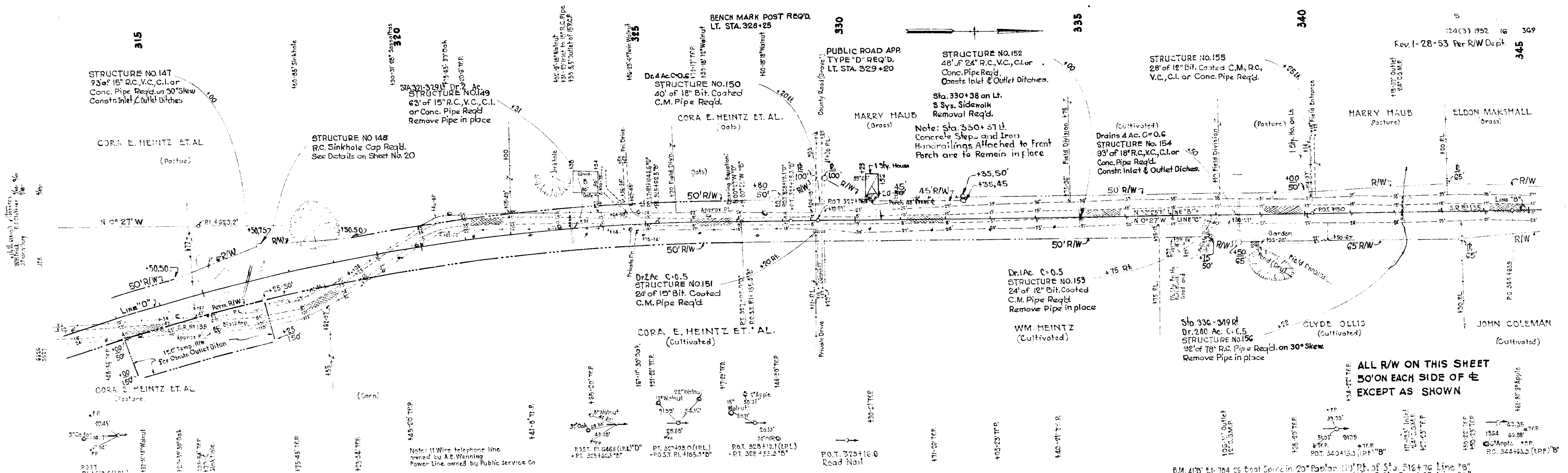
Balance No. 13
 Cut = 8915 Cu.Yds.
 Fill + 20% = 10,865 Cu.Yds.
 Spl. Borrow = 7950 Cu.Yds.

Above Quantities include 114 Cys. Cut & 114 Cys. Fill for bearing down Old Fill.

23	24	25	26	27	28	29	30	31	32	33	34	35	36	37	38	39	40	41	42	43	44	45	46	47	48	49	50	51	52	53	54	55	56	57	58	59	60	61	62	63	64	65	66	67	68	69	70	71	72	73	74	75	76	77	78	79	80	81	82	83	84	85	86	87	88	89	90	91	92	93	94	95	96	97	98	99	100
----	----	----	----	----	----	----	----	----	----	----	----	----	----	----	----	----	----	----	----	----	----	----	----	----	----	----	----	----	----	----	----	----	----	----	----	----	----	----	----	----	----	----	----	----	----	----	----	----	----	----	----	----	----	----	----	----	----	----	----	----	----	----	----	----	----	----	----	----	----	----	----	----	----	----	----	----	-----

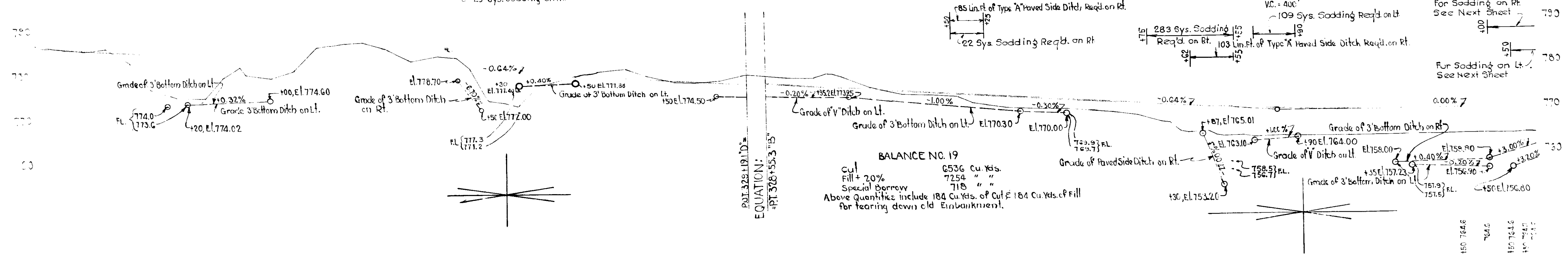
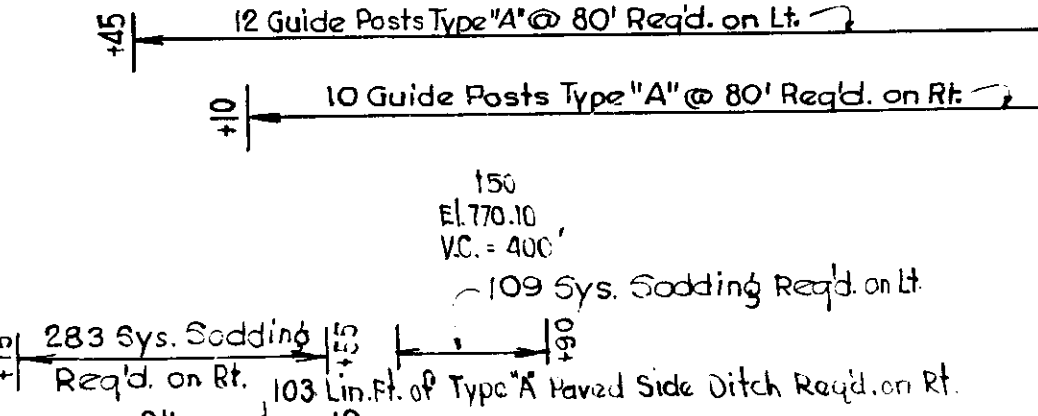
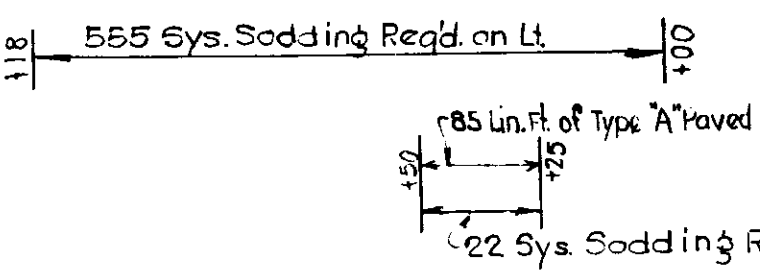
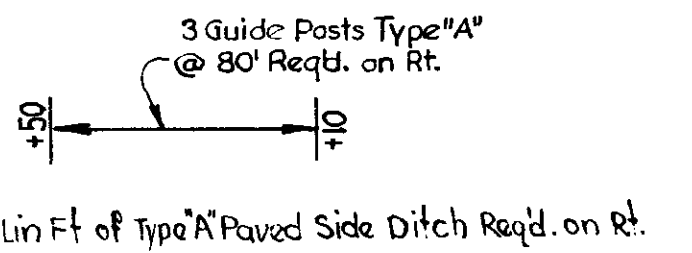
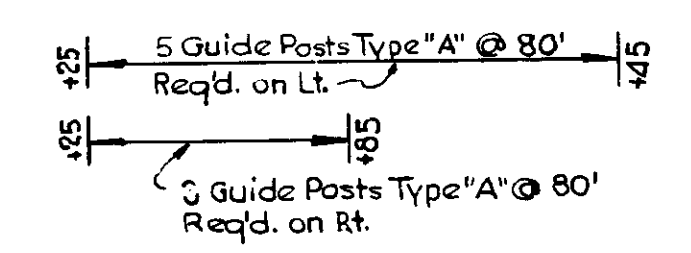


255	256	257	258	259	260	261	262	263	264	265	266	267	268	269	270	271	272	273	274	275	276	277	278	279	280	281	282	283	284	285
-----	-----	-----	-----	-----	-----	-----	-----	-----	-----	-----	-----	-----	-----	-----	-----	-----	-----	-----	-----	-----	-----	-----	-----	-----	-----	-----	-----	-----	-----	-----



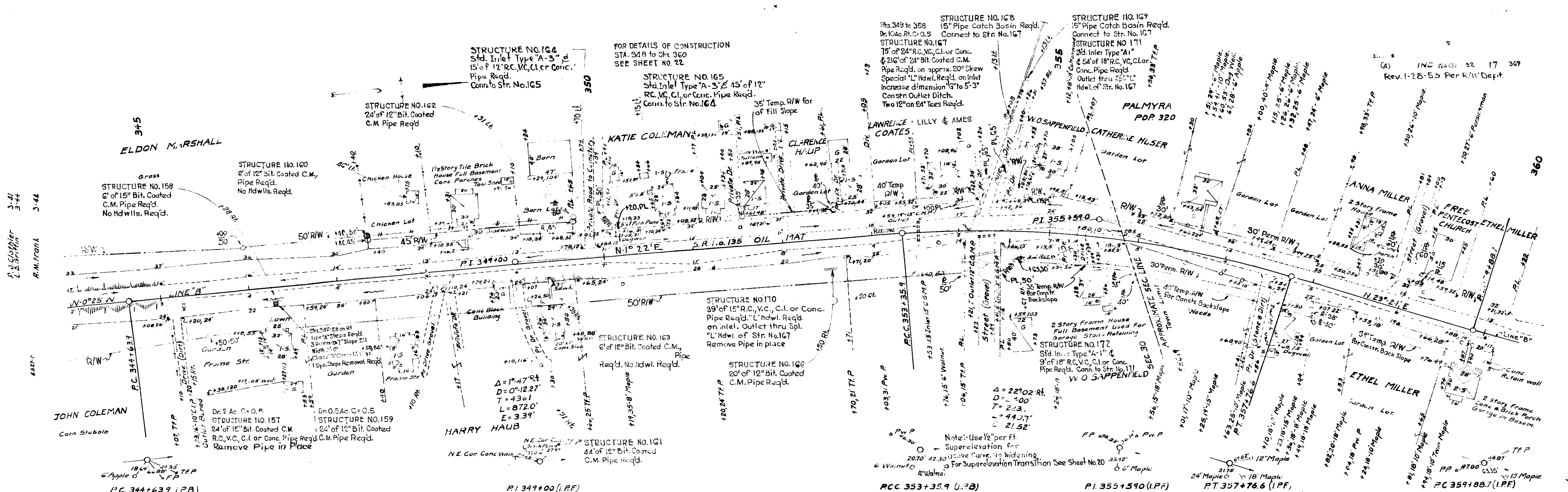
ALL R/W ON THIS SHEET
 50' ON EACH SIDE OF \pm
 EXCEPT AS SHOWN

6 M. 415' E. 78.42' East Spike in 20' Poplar 110' Rt. of Sta. 316+76 Line 'B'
 6 M. 428' E. 78.41' East Spike in 8' Pear 103' Lt. of Sta. 327+97 Line 'B'
 6 M. 457' E. 76.82' East Spike in 20' Elm 91' Rt. of Sta. 330+15 Line 'B'



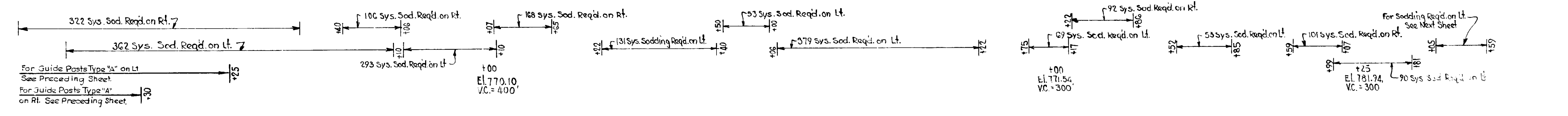
EQUATION: $Y = 1.1912X - 373.2$

315	316	317	318	319	320	321	322	323	324	325	326	327	328	329	330	331	332	333	334	335	336	337	338	339	340	341	342	343	344	345
750.0	750.5	751.0	751.5	752.0	752.5	753.0	753.5	754.0	754.5	755.0	755.5	756.0	756.5	757.0	757.5	758.0	758.5	759.0	759.5	760.0	760.5	761.0	761.5	762.0	762.5	763.0	763.5	764.0	764.5	765.0



1937 HIGH WATER ELEV. = 767.3

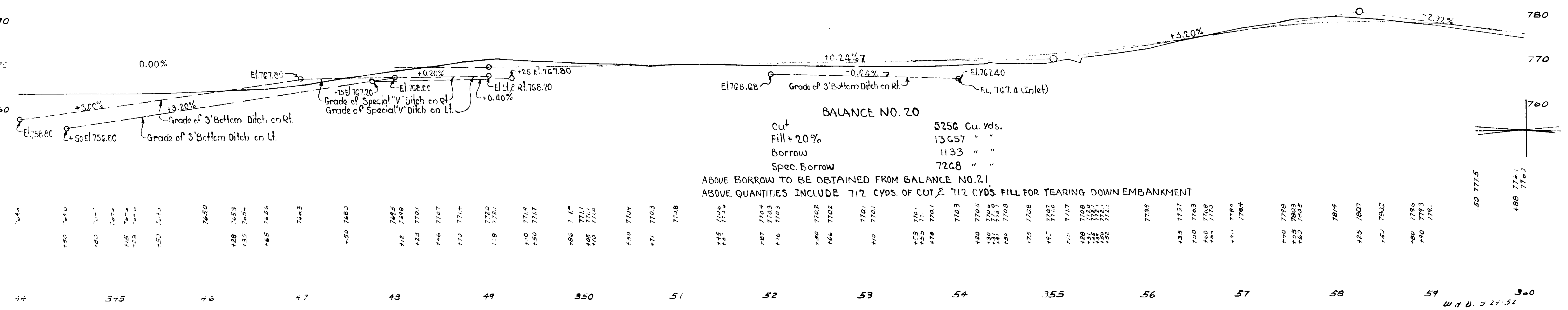
ALL R/W ON THIS SHEET AS SHOWN
B.M. No 4 + Elev. 773.05 Boat Spike in 20" Cottonwood Tr 362.354+66



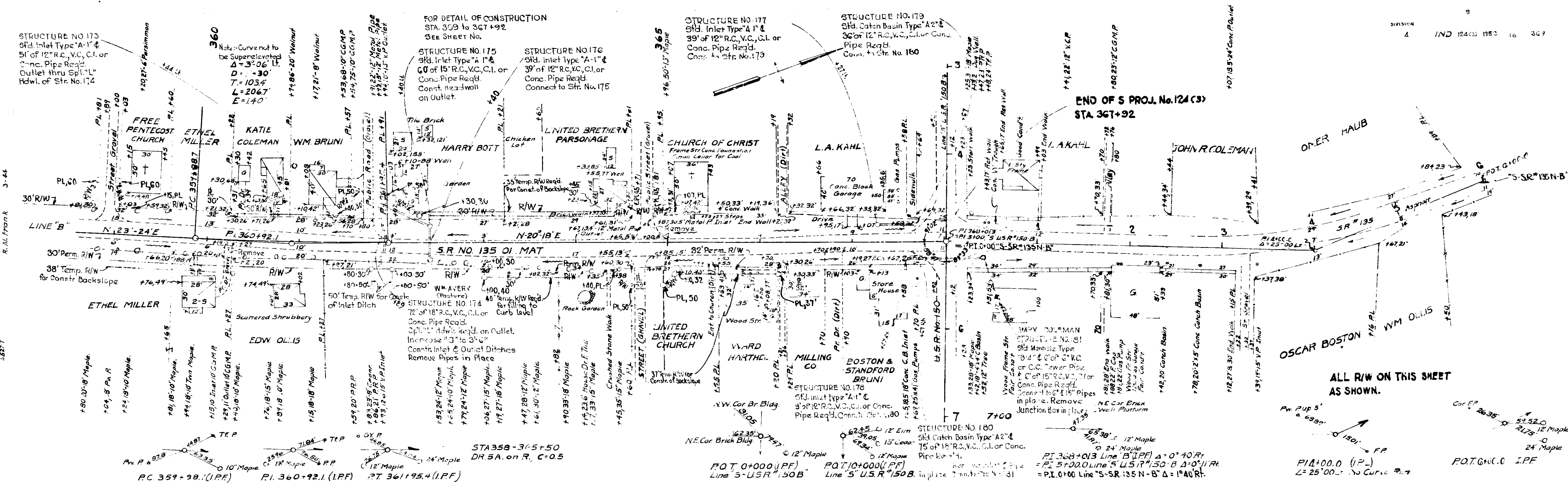
BALANCE NO. 20

Cut	5256 Cu. Yds.
Fill + 20%	13657 " "
Borrow	1133 " "
Spec. Borrow	7268 " "

ABOVE BORROW TO BE OBTAINED FROM BALANCE NO. 21
ABOVE QUANTITIES INCLUDE 712 CYDS. OF CUT & 712 CYDS. FILL FOR TEARING DOWN EMBANKMENT

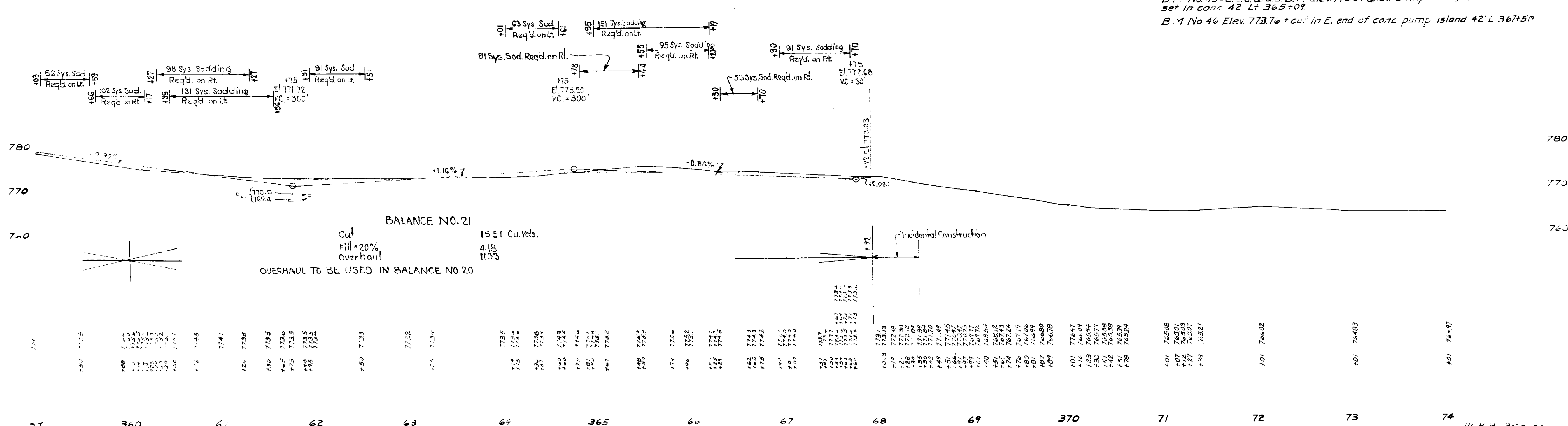


W.H.D. 5 24-32



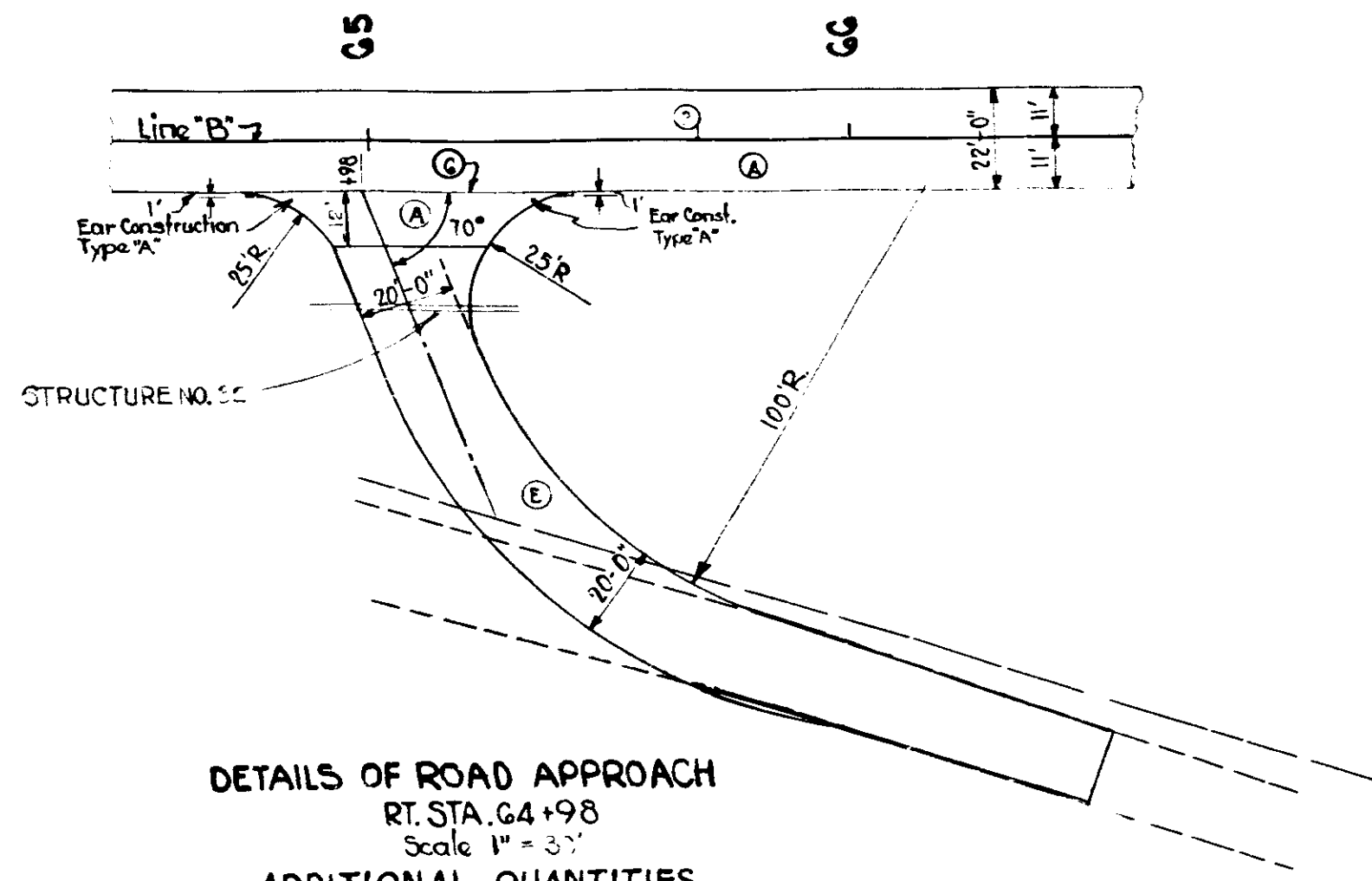
ALL R/W ON THIS SHEET AS SHOWN.

B.M. No 45-U.S.C. & G.S. B.M. Elev 776.64 (Elev. stamped 777) Std disc. set in conc. 42" Lt 365+07
 B.M. No 46 Elev 773.76 + cut in E. end of conc. pump island 42" Lt 367+50



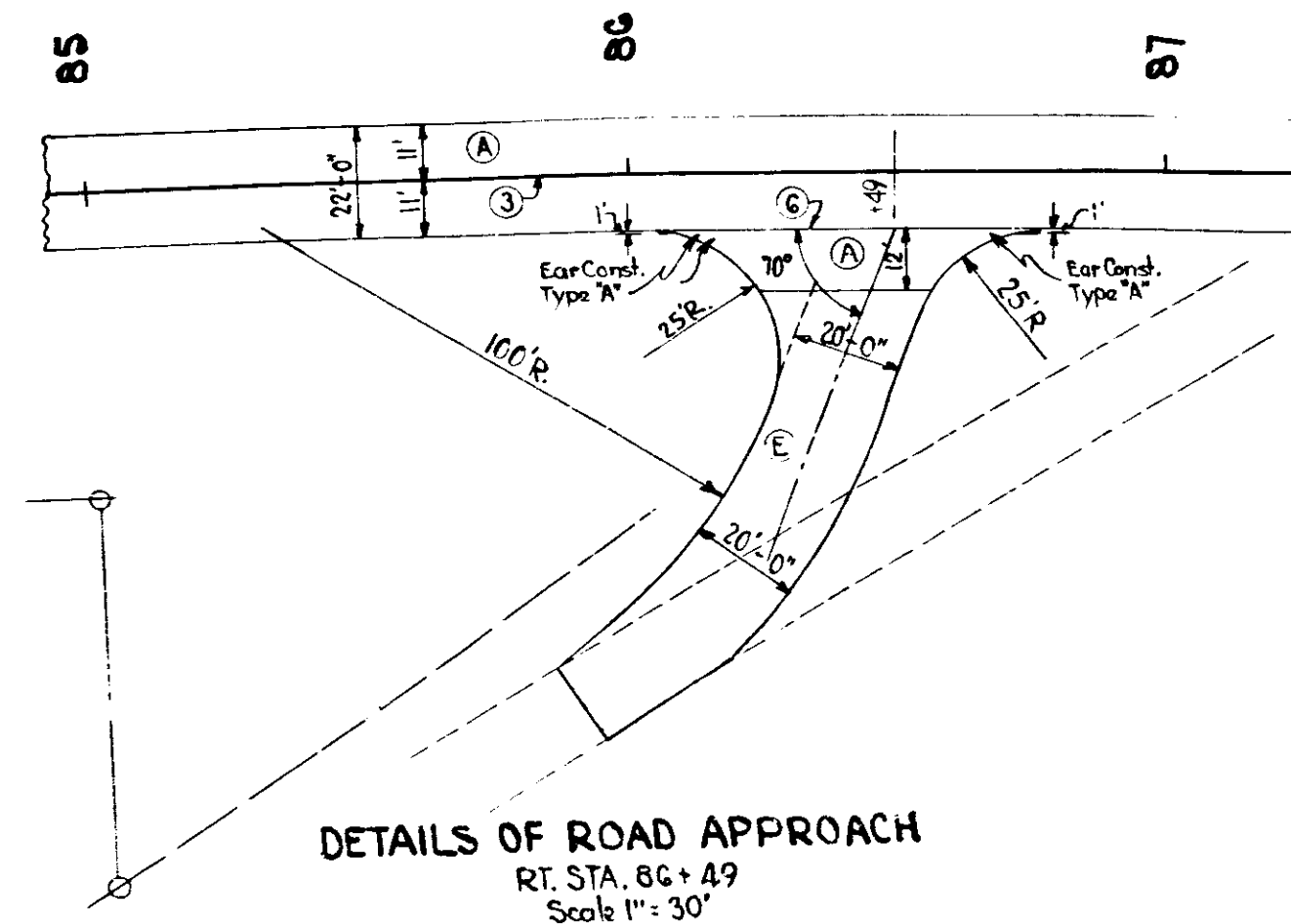
BALANCE NO. 21
 Cut 15.51 Cu. Yds.
 Fill + 20% Overhaul 418
 1133
 OVERHAUL TO BE USED IN BALANCE NO. 20

357	360	61	62	63	64	365	66	67	68	69	370	71	72	73	74
775.5	775.5	775.5	775.5	775.5	775.5	775.5	775.5	775.5	775.5	775.5	775.5	775.5	775.5	775.5	775.5



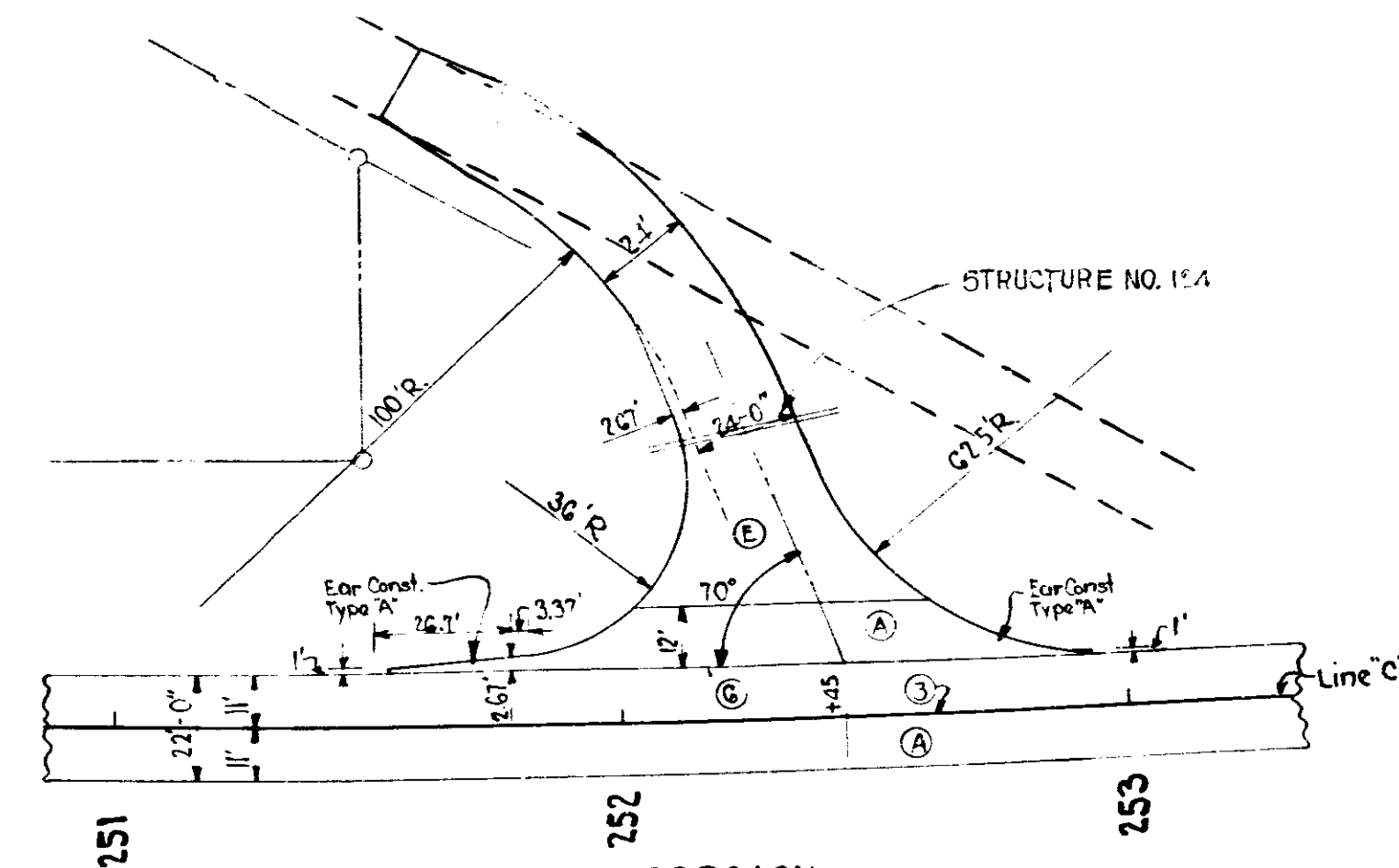
DETAILS OF ROAD APPROACH
RT. STA. 64+98
Scale 1" = 30'

ADDITIONAL QUANTITIES
8" Plain Concrete Pavement 59 Sys.
Reinf. Steel for Pavement 48 Lbs.
8" Salvaged Road Material 441 Sys.



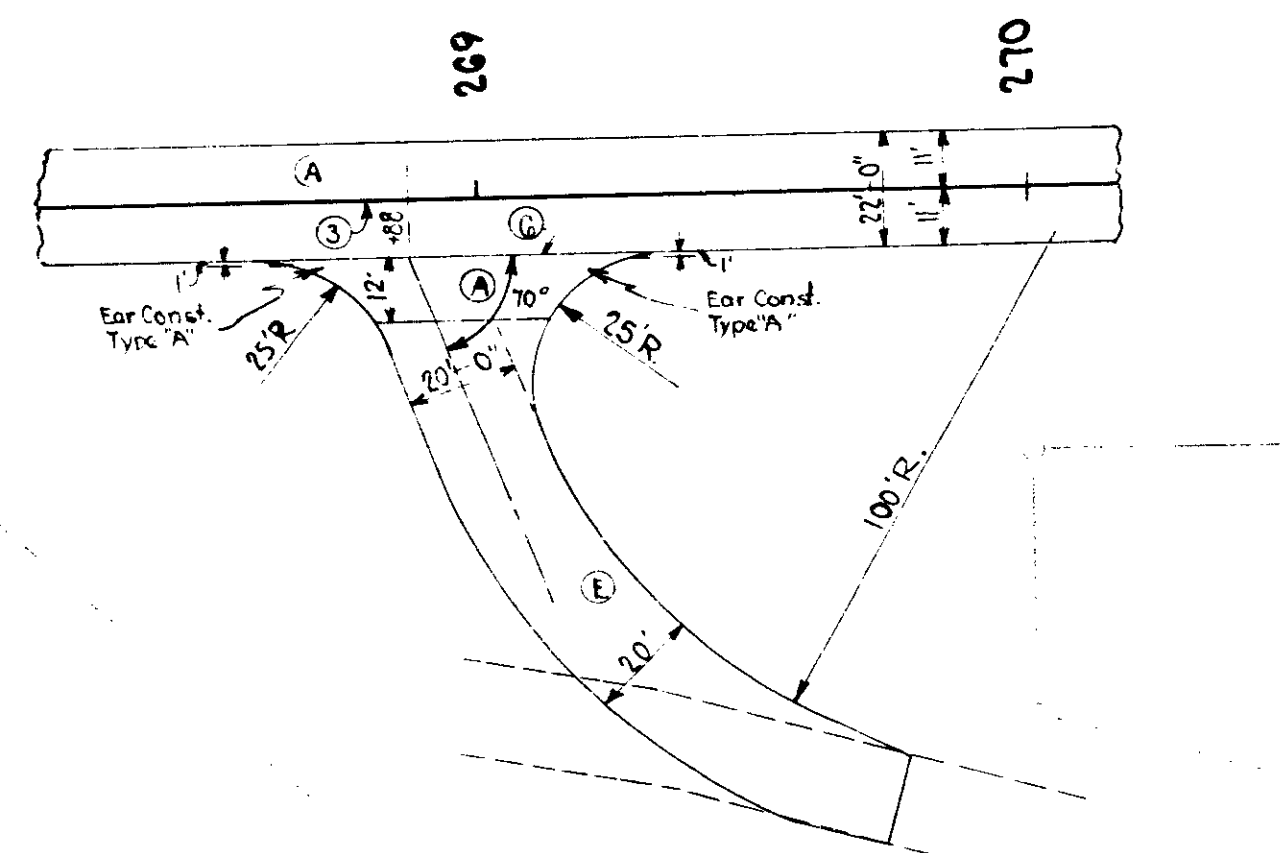
DETAILS OF ROAD APPROACH
RT. STA. 86+49
Scale 1" = 30'

ADDITIONAL QUANTITIES
8" Plain Concrete Pavement 59 Sys.
Reinf. Steel for Pavement 43 Lbs.
8" Salvaged Road Material 224 Sys.



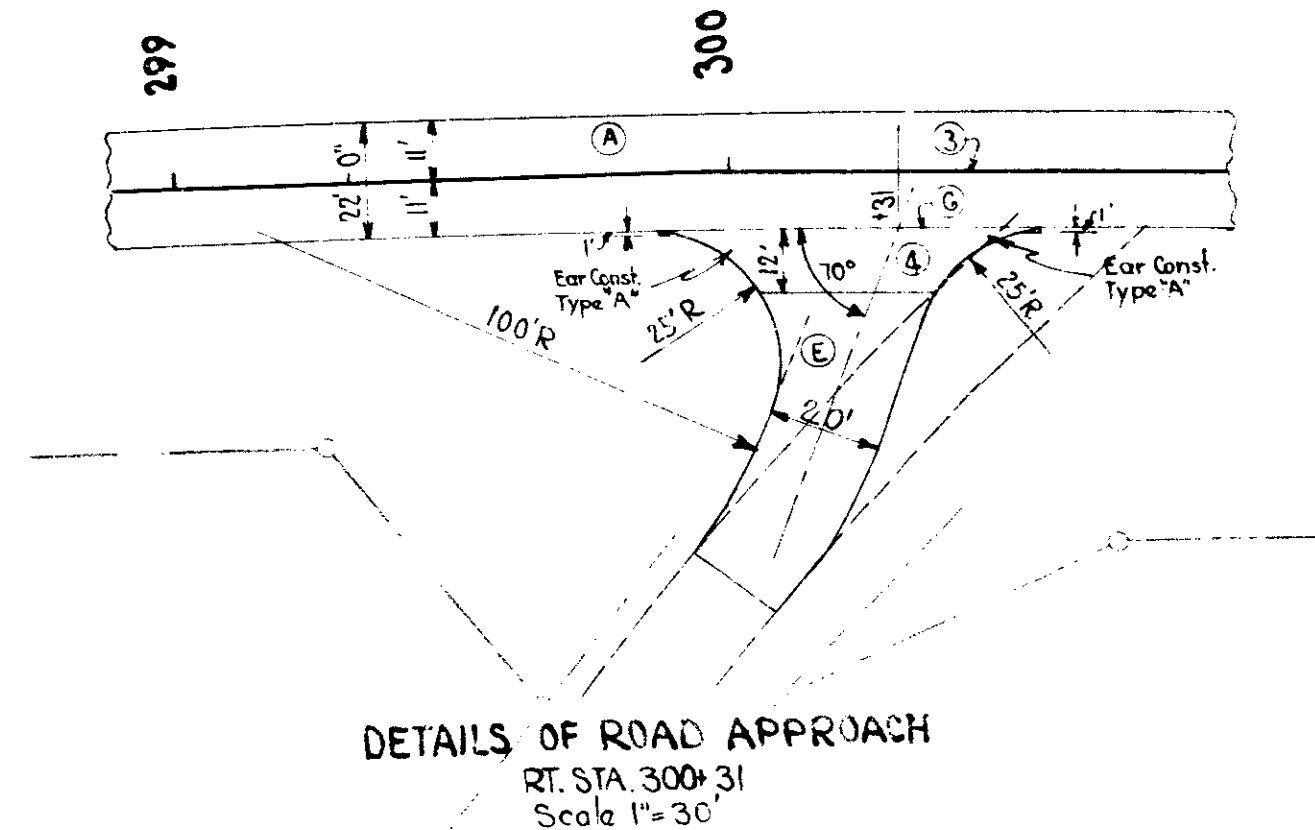
DETAILS OF ROAD APPROACH
LT. STA. 252+45

ADDITIONAL QUANTITIES
8" Plain Concrete Pavement 117 Sys.
Reinf. Steel for Pavement 119 Lbs.
8" Salvaged Road Material 426 Sys.



DETAILS OF ROAD APPROACH
RT. STA. 268+66
Scale 1" = 30'

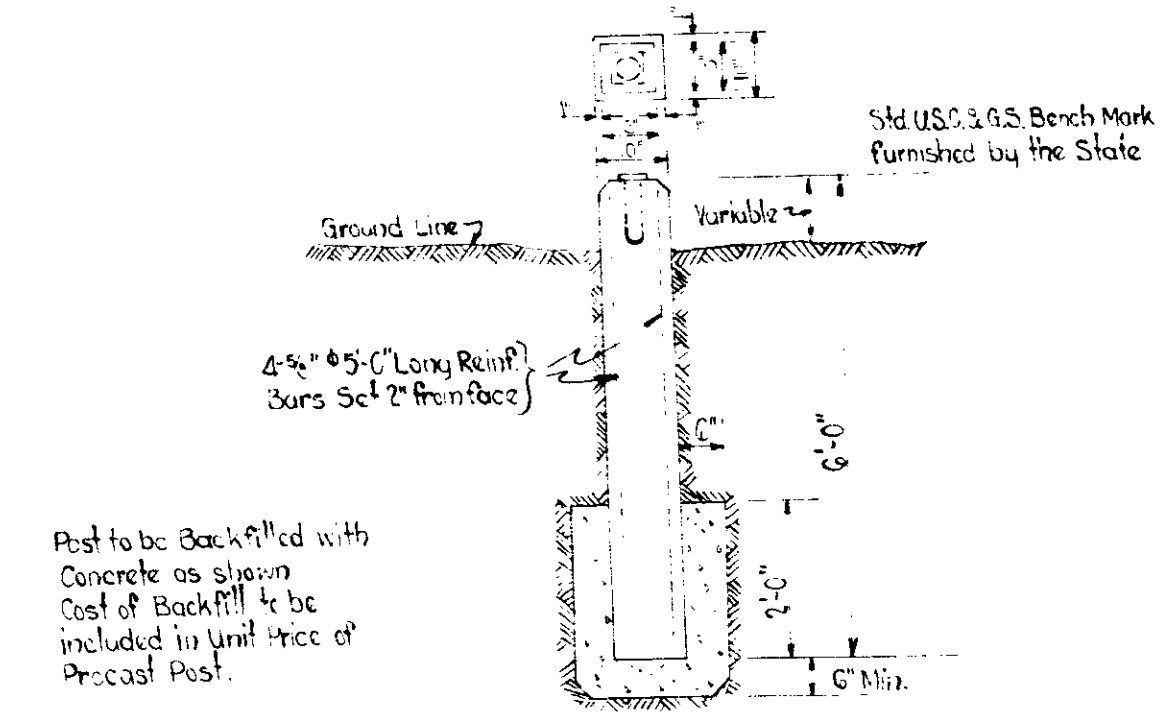
ADDITIONAL QUANTITIES
8" Plain Concrete Pavement 59 Sys.
Reinf. Steel for Pavement 48 Lbs.
8" Salvaged Road Material 334 Sys.



DETAILS OF ROAD APPROACH
RT. STA. 300+31
Scale 1" = 30'

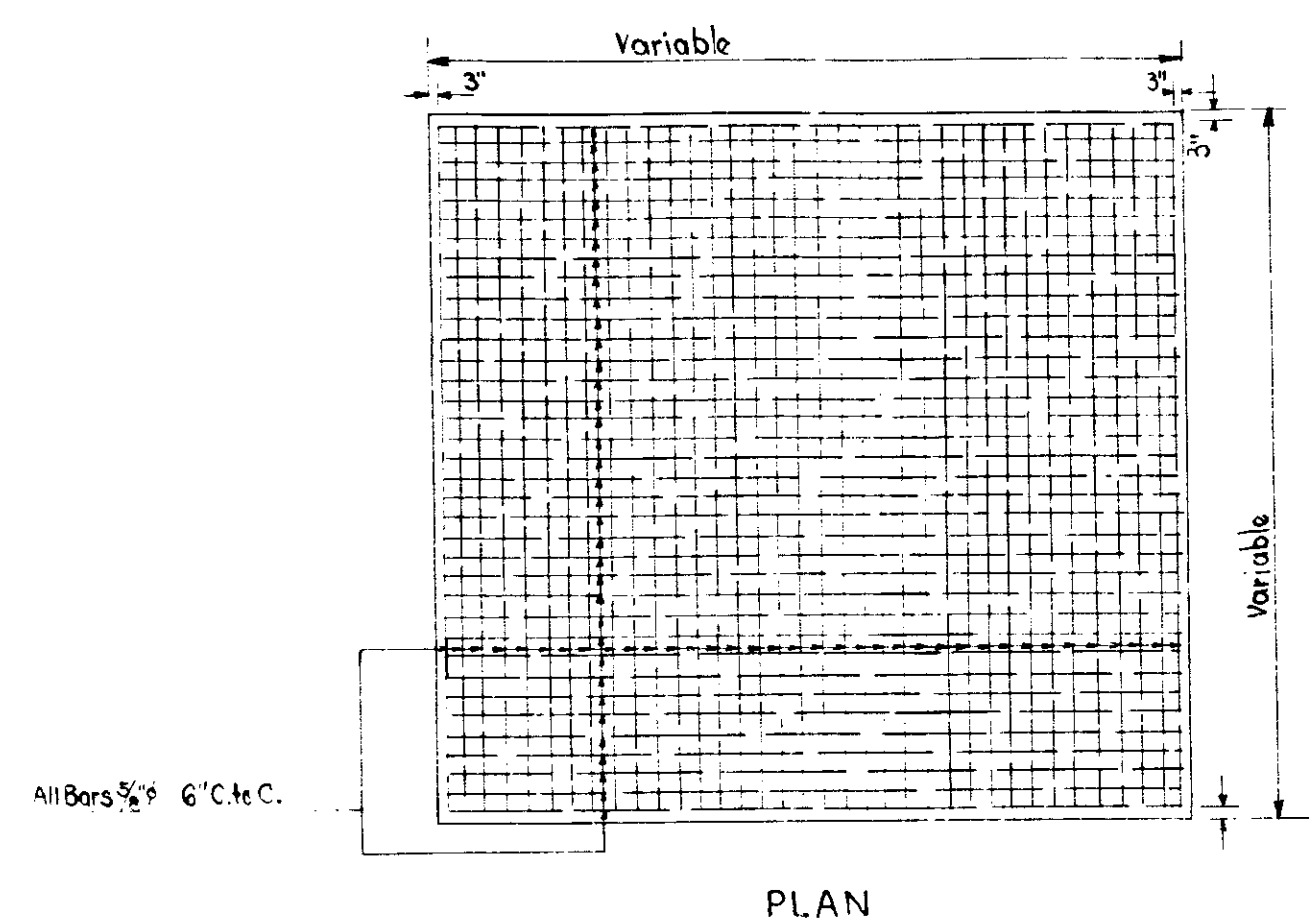
ADDITIONAL QUANTITIES
8" Plain Concrete Pavement 59 Sys.
Reinf. Steel for Pavement 48 Lbs.
8" Salvaged Road Material 142 Sys.

- LEGEND**
- ⊖ Longitudinal Joint.
 - ⊕ Construction Joint.
 - ⊙ 8" Plain Concrete Pavement.
 - ⊗ 8" Salvaged Road Material.
 - ▭ Portion to be removed.

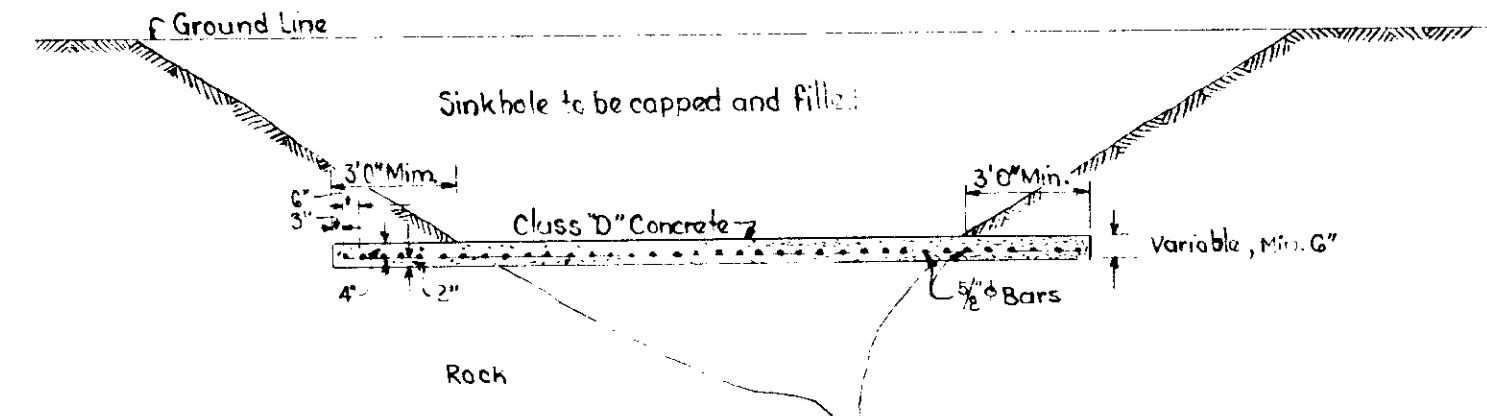
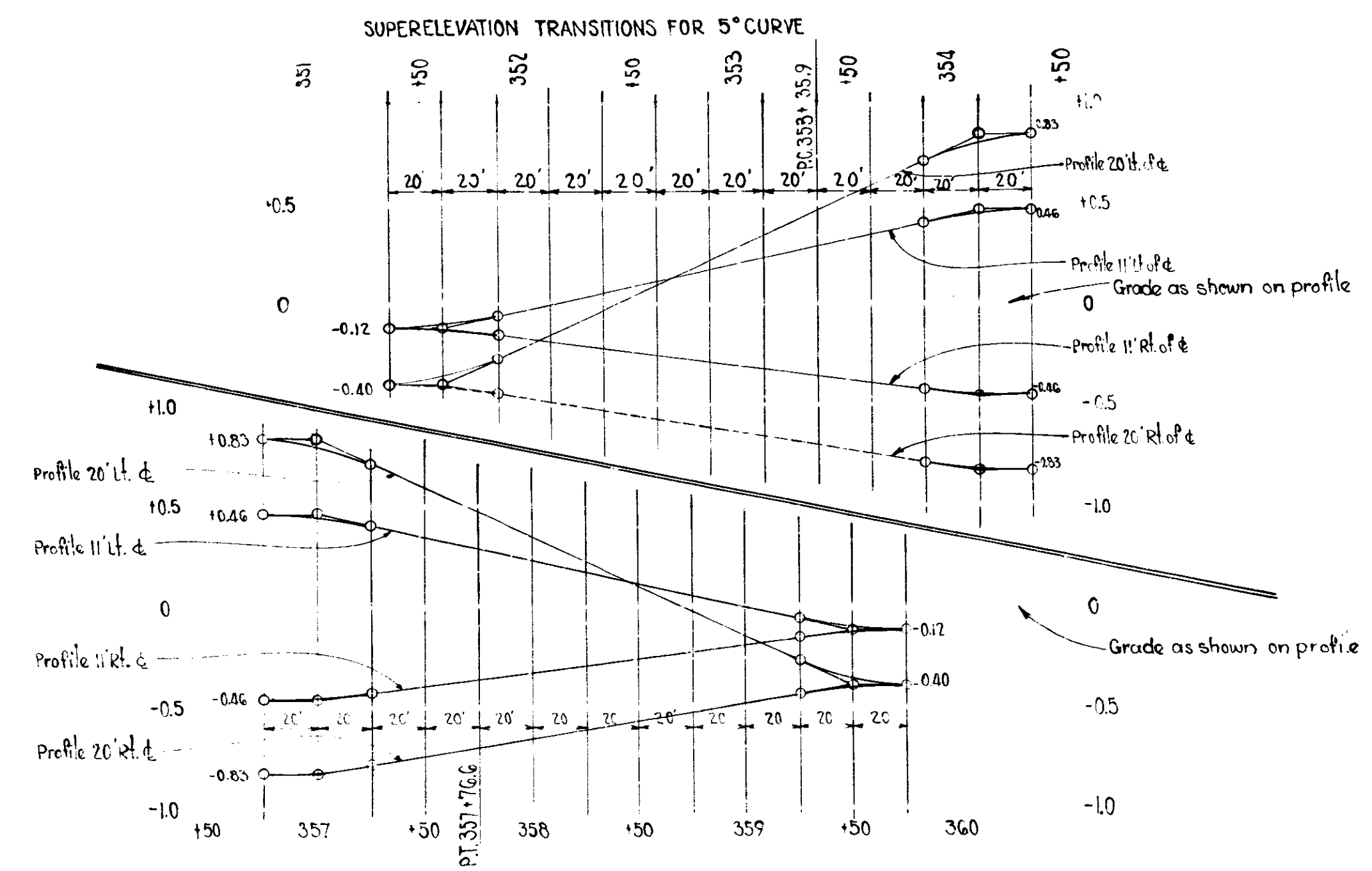


DETAIL OF SPECIAL PRECAST POST
FOR U.S.C. & G.S. BENCH MARK
STA. 45+14

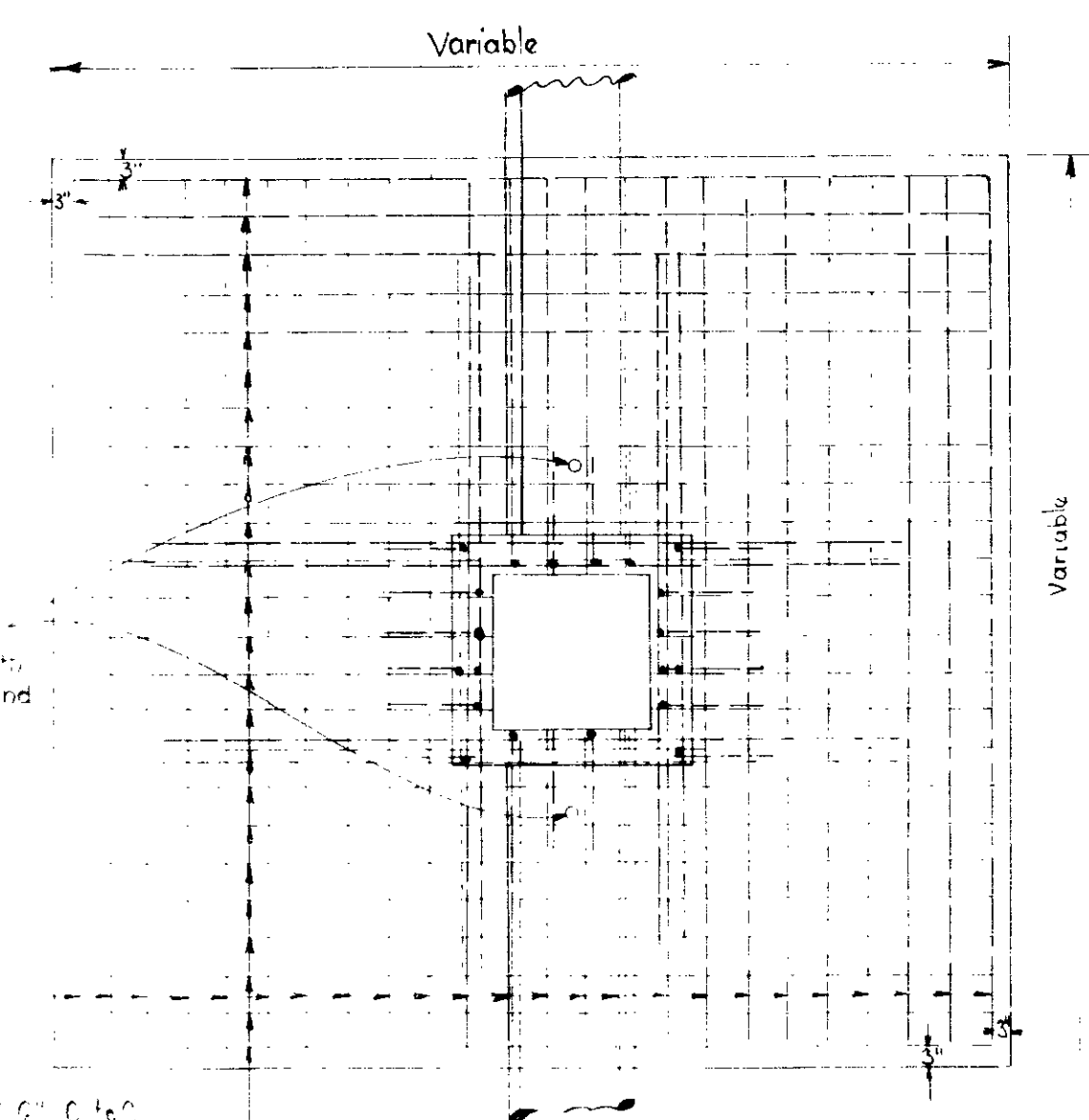
DETAILS



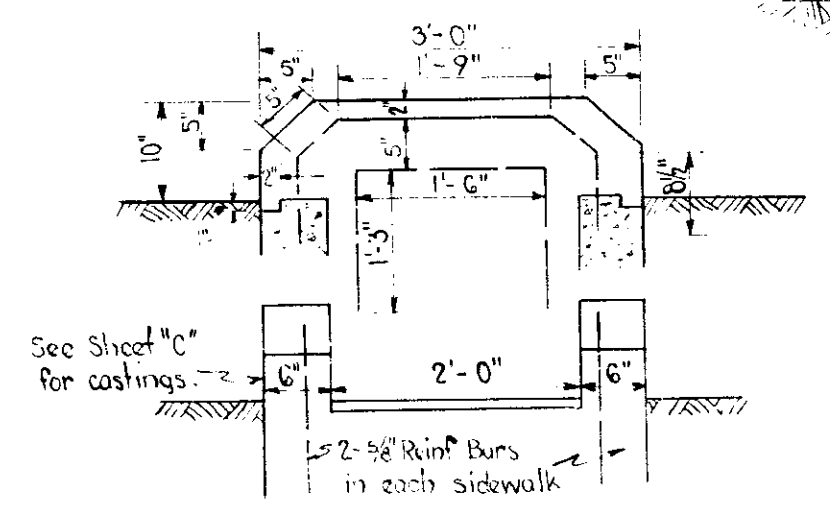
PLAN



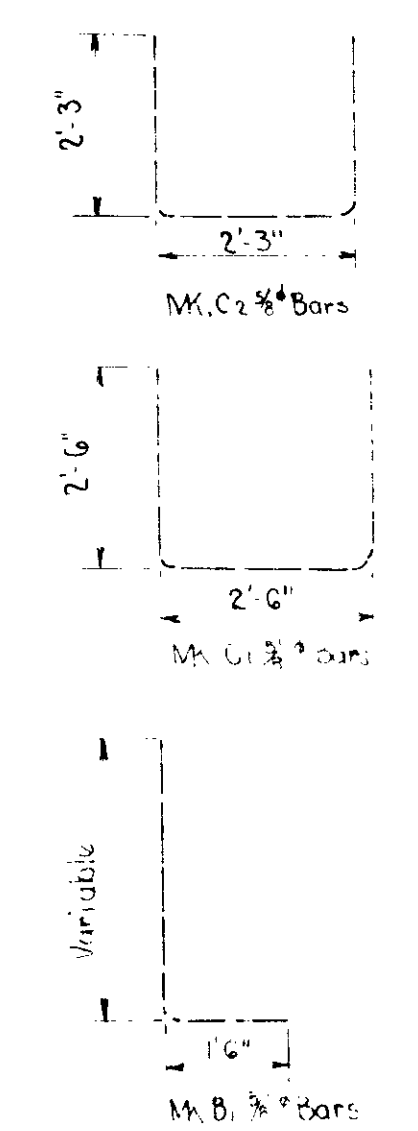
CROSS SECTION
DETAIL OF R.C. SINKHOLE CAP
Scale 1/4"=1'-0"



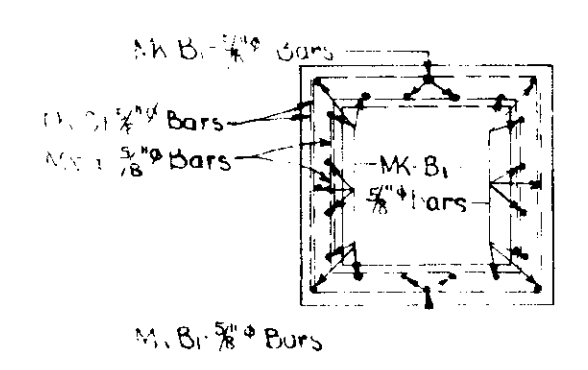
PLAN
With R.C. Cap removed



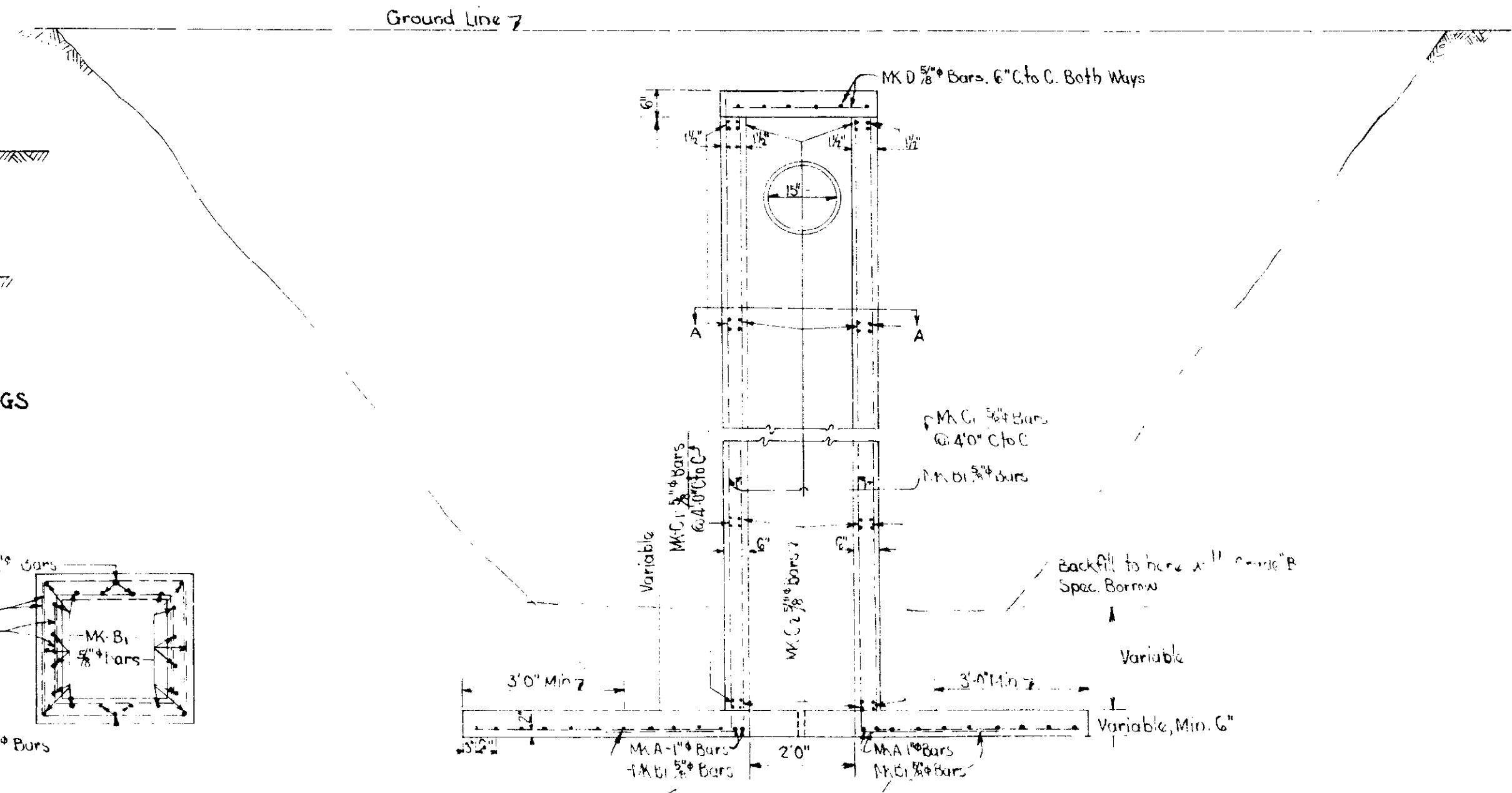
DETAIL OF CHIMNEY TOP FOR
EARTH DITCH TYPE CASTINGS



DETAIL OF R.C. SINKHOLE CAP WITH CHIMNEY
Scale 1/4"=1'-0"



SECTION A-A
With R.C. Cap removed

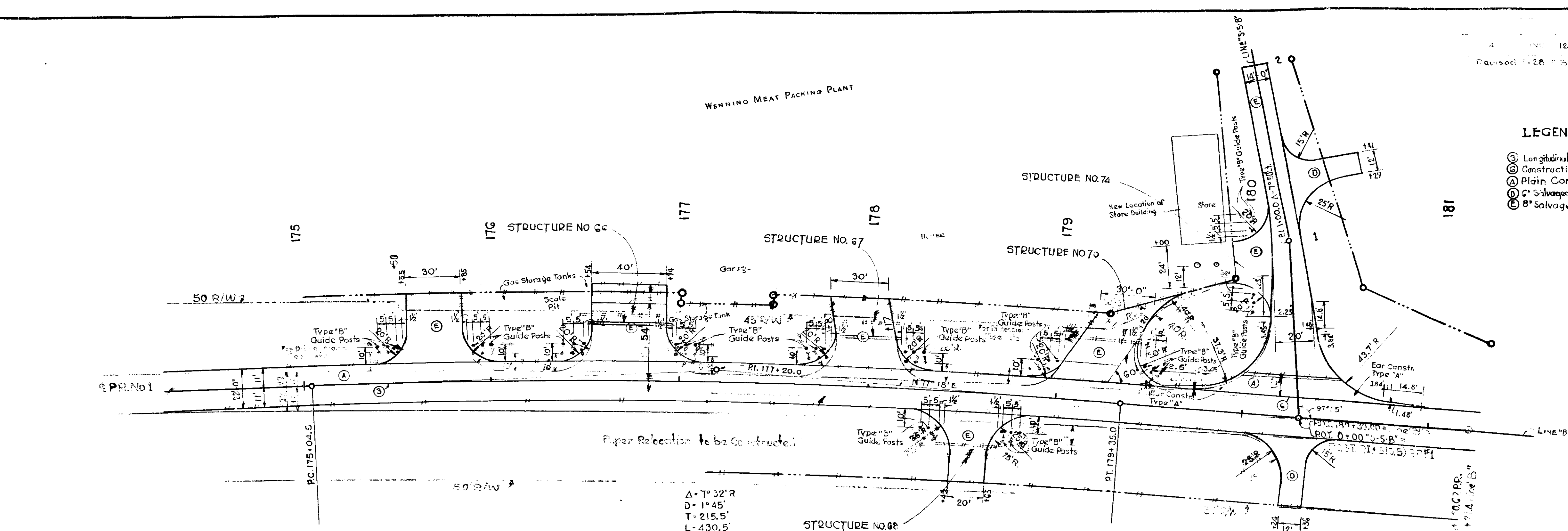


CROSS SECTION

DETAILS

LEGEND

- ⊖ Longitudinal Joint
- ⊕ Construction Joint
- ⊙ Plain Conc. Pavement
- ⊗ 8" Salvaged Road Material
- ⊘ 8" Salvaged Road Material

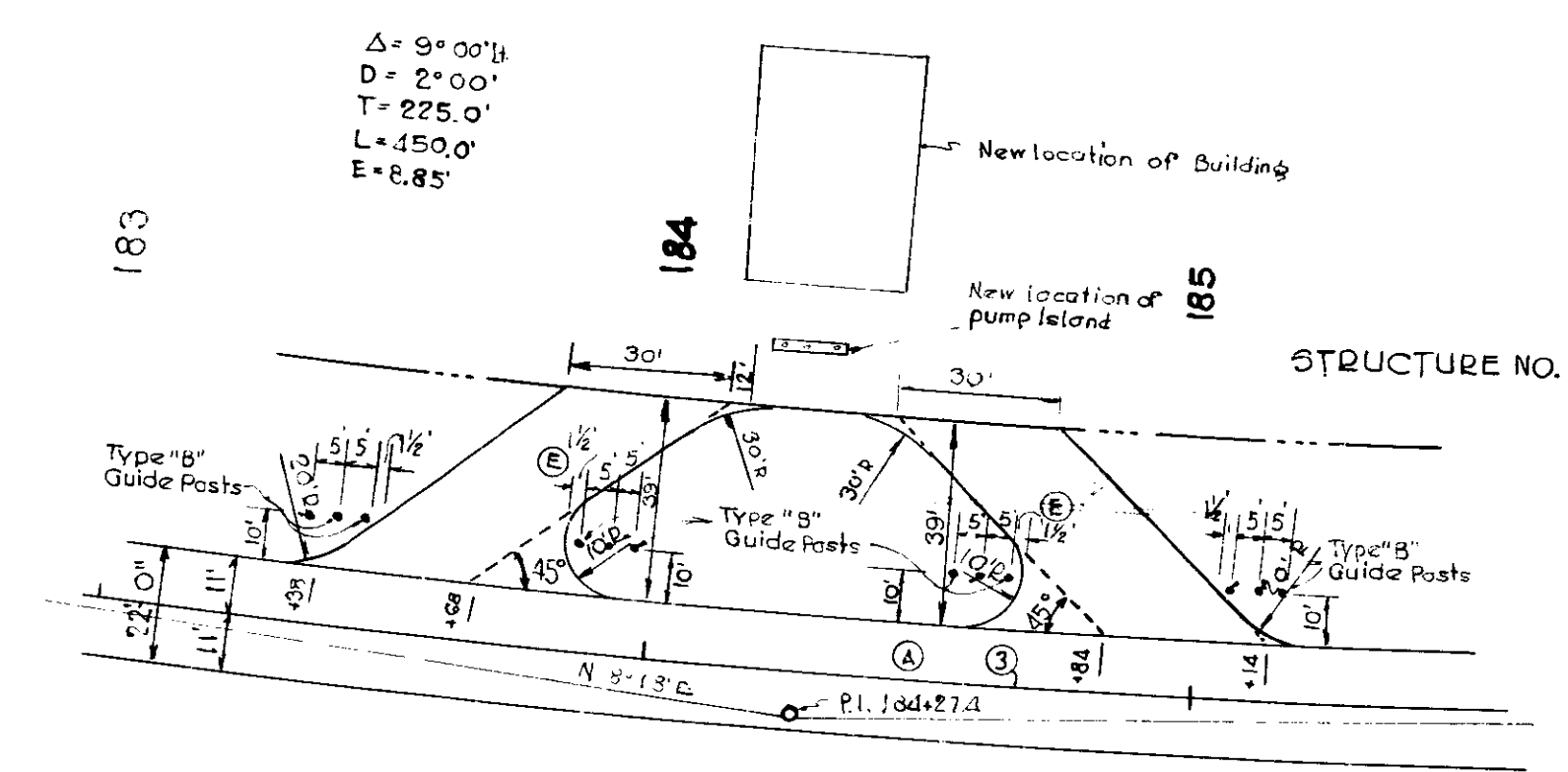


**DETAILS OF APPROACHES
STA. 175+00 TO STA. 181+00**
Scale 1"=30'

**ADDITIONAL QUANTITIES
STA. 175+00 TO STA. 181+00**

8" Plain Conc. Pavement	103 Sys.
Reinforcing Steel for Pavement	135 Lbs.
8" Salvaged Road Material	1263 Sys.
6" Salvaged Road Material	142 Sys.
Type "B" Guide Posts	36 Each

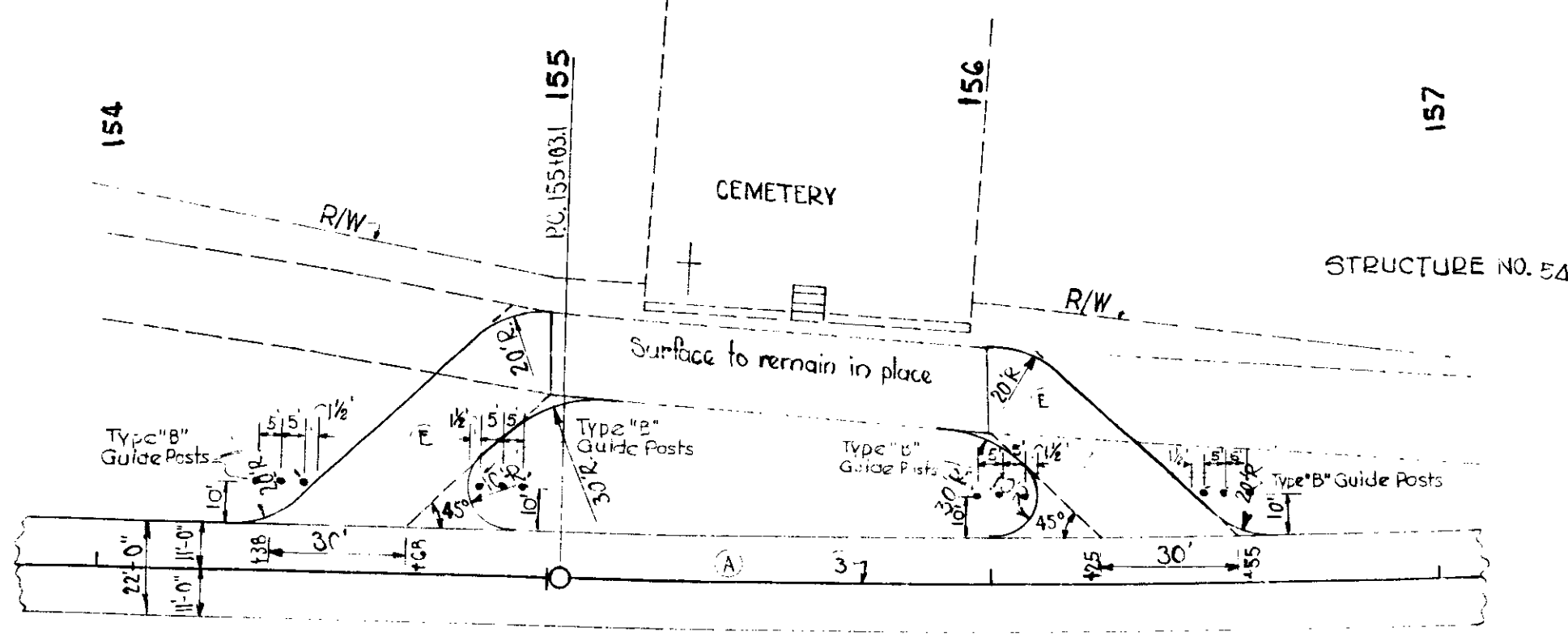
Note: All Type "B" Guide Posts to be placed 10' from Edge of Pavement and 12" from Edge of Drive to Wash Side of Drive.



**DETAILS OF COMMERCIAL DRIVES
LT. STA. 183+53 & STA. 184+99**
Scale 1"=30'

ADDITIONAL QUANTITIES

8" Salvaged Road Material	305 Sys.
Type "B" Guide Posts	12 Each



**DETAILS OF COMMERCIAL DRIVES
LT. STA. 154+53 & STA. 156+40**
Scale 1"=30'

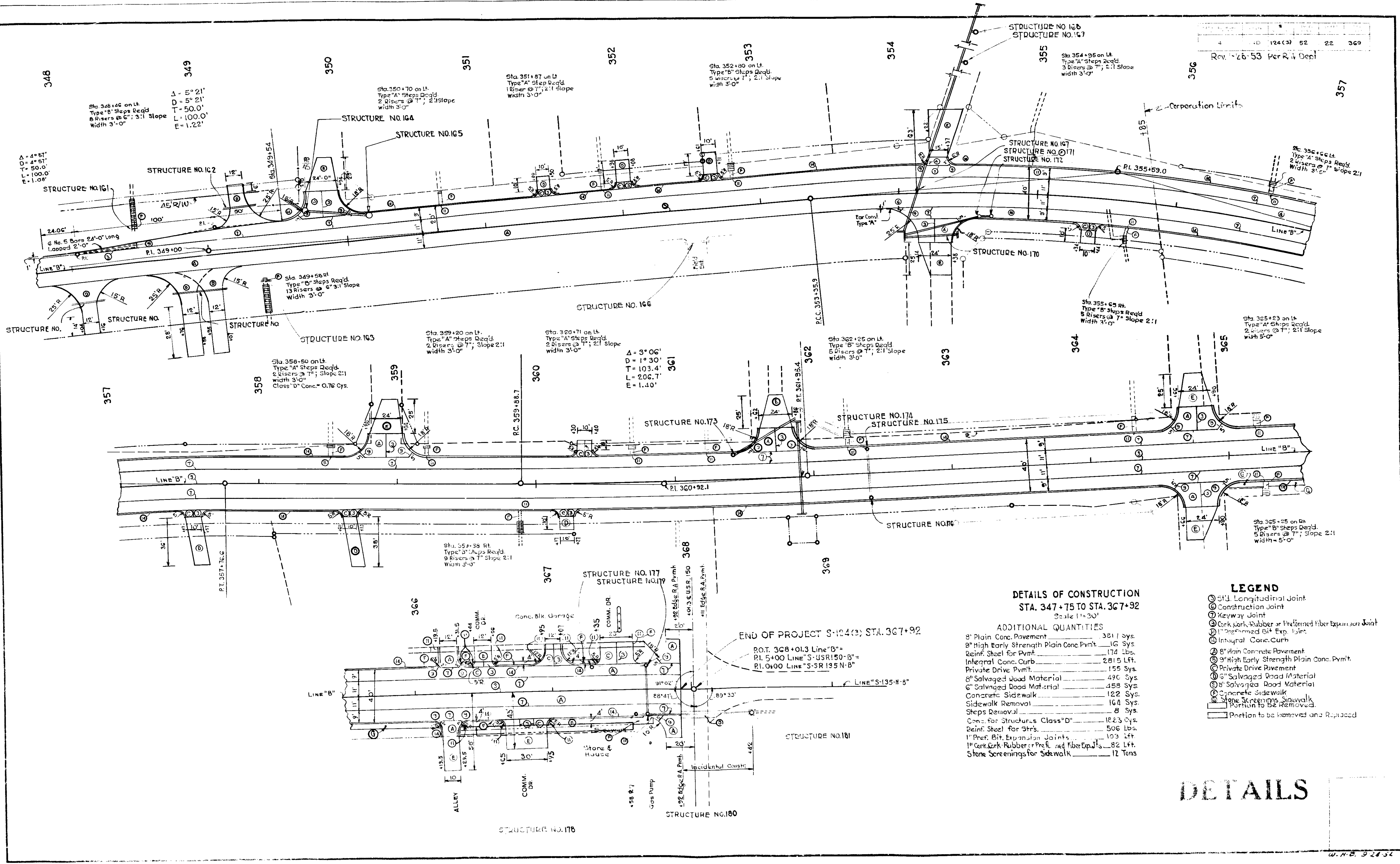
ADDITIONAL QUANTITIES

8" Salvaged Road Material	311 Sys.
Type "B" Guide Posts	12 Each

DETAILS

4	10	124(3)	52	22	369
---	----	--------	----	----	-----

Rev. 12-26-53 Per R.W. Dept.



DETAILS OF CONSTRUCTION
STA. 347+75 TO STA. 367+92
 Scale 1"=30'

ADDITIONAL QUANTITIES

9" Plain Conc. Pavement	3211 Sys.
8" High Early Strength Plain Conc. Pvm't	174 Sys.
Reinf. Steel for Pvm't	174 Lbs.
Integral Conc. Curb	2815 Lft.
Private Drive Pvm't	155 Sys.
8" Salvaged Wood Material	490 Sys.
6" Salvaged Road Material	458 Sys.
Concrete Sidewalk	122 Sys.
Sidewalk Removal	164 Sys.
Steps Removal	8 Sys.
Conc. for Structures Class "D"	1823 Cys.
Reinf. Steel for Strs.	506 Lbs.
11" Pref. Bit. Expansion Joints	103 Lft.
11" Cork-Rubber or Pref. Bit. Fiber Exp. Jts.	82 Lft.
Stone Screenings for Sidewalk	12 Tons

LEGEND

- ⊙ S.I. Longitudinal Joint
- ⊙ Construction Joint
- ⊙ Keyway Joint
- ⊙ Cork-Rubber or Preformed fiber Expansion Joint
- ⊙ Preformed Bit. Exp. Jnt.
- ⊙ Integral Conc. Curb
- ⊙ 8" Plain Concrete Pavement
- ⊙ 9" High Early Strength Plain Conc. Pvm't
- ⊙ Private Drive Pavement
- ⊙ 8" Salvaged Road Material
- ⊙ 6" Salvaged Road Material
- ⊙ Concrete Sidewalk
- ⊙ Stone Screenings Sidewalk
- ⊙ Portion to be Removed and Replaced

DETAILS

W.H.C. 9-24-54

