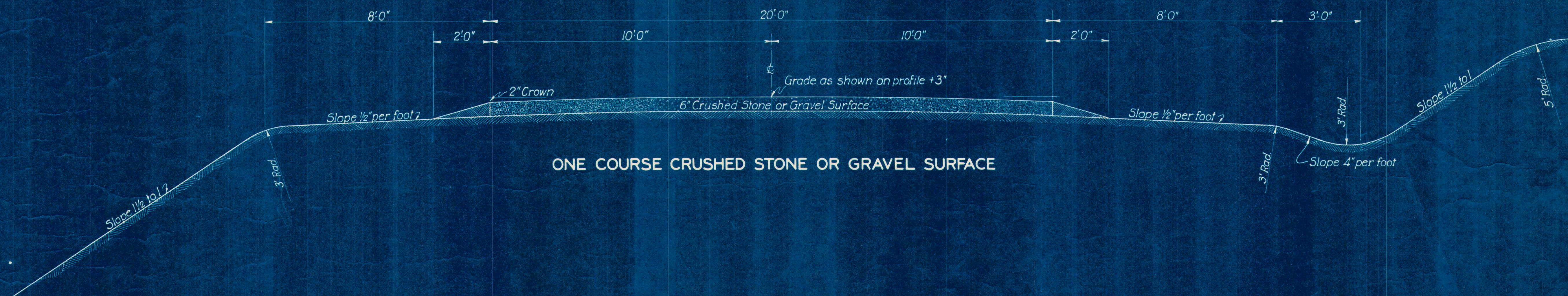






FEDERAL ROAD DISTRICT No.	STATE	PROJ. No.	FISCAL YEAR	SHEET No.	TOTAL SHEETS
7	IND.	380	1936	2	164

SEC. "B"



ONE COURSE CRUSHED STONE OR GRAVEL SURFACE

TYPICAL CROSS SECTION  
 TO BE USED ON  
 PROJECT NO. 380 SEC. B  
 SCALE: ~ 1/2" = 1'-0"  
 STATE HIGHWAY COMMISSION OF INDIANA

APPROVED \_\_\_\_\_  
 CHIEF ENGINEER

APPROVED \_\_\_\_\_  
 CHAIRMAN







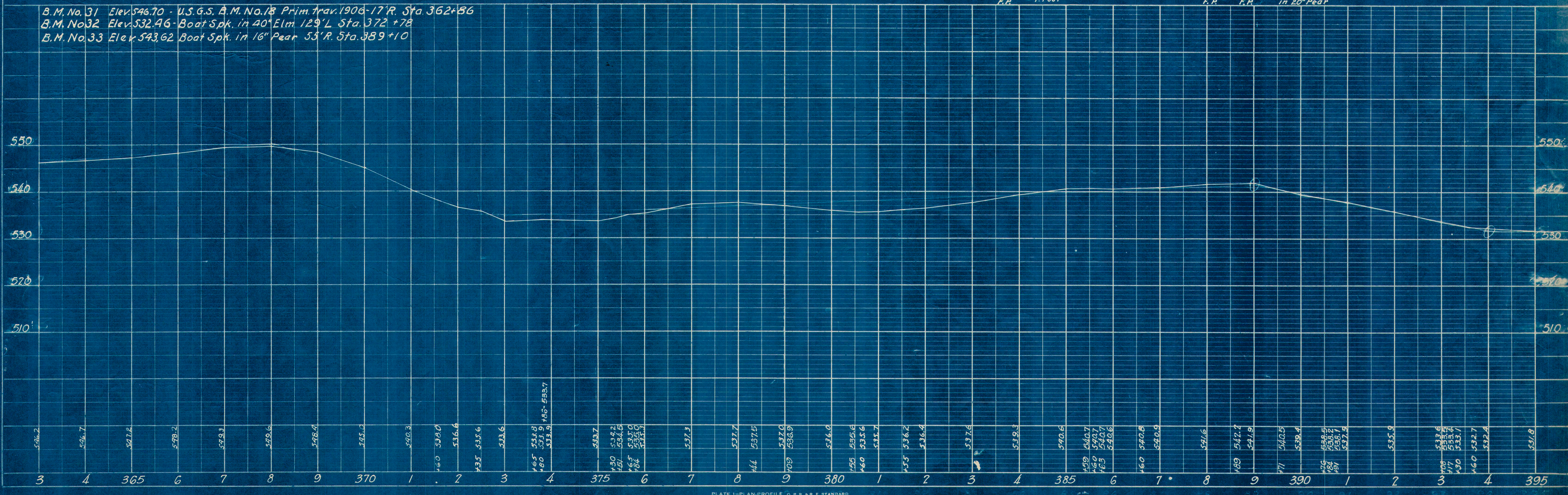
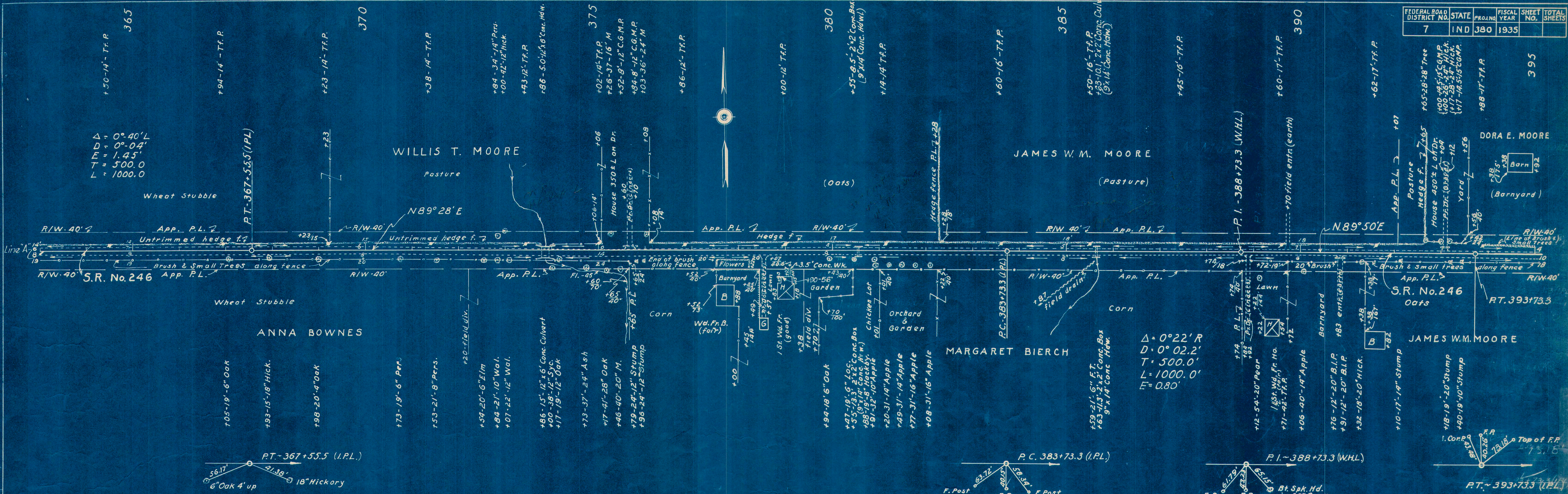




T. J. Poggiani 1-34  
 Paul J. Fosch 3-35  
 W. R. Jones 3-35  
 PLANNED BY  
 CHECKED BY  
 DRAWN BY  
 NOTE BOOK NUMBER 32767  
 DATE 12/1/35

T. J. Poggiani 1-34  
 Paul J. Fosch 3-35  
 W. R. Jones 3-35  
 PROFILE  
 CHECKED BY  
 DRAWN BY  
 NOTE BOOK NUMBER 32792  
 DATE 12/1/35

FEDERAL ROAD DISTRICT NO.	STATE	PROJ. NO.	FISCAL YEAR	SHEET NO.	TOTAL SHEETS
7	IND	380	1935		



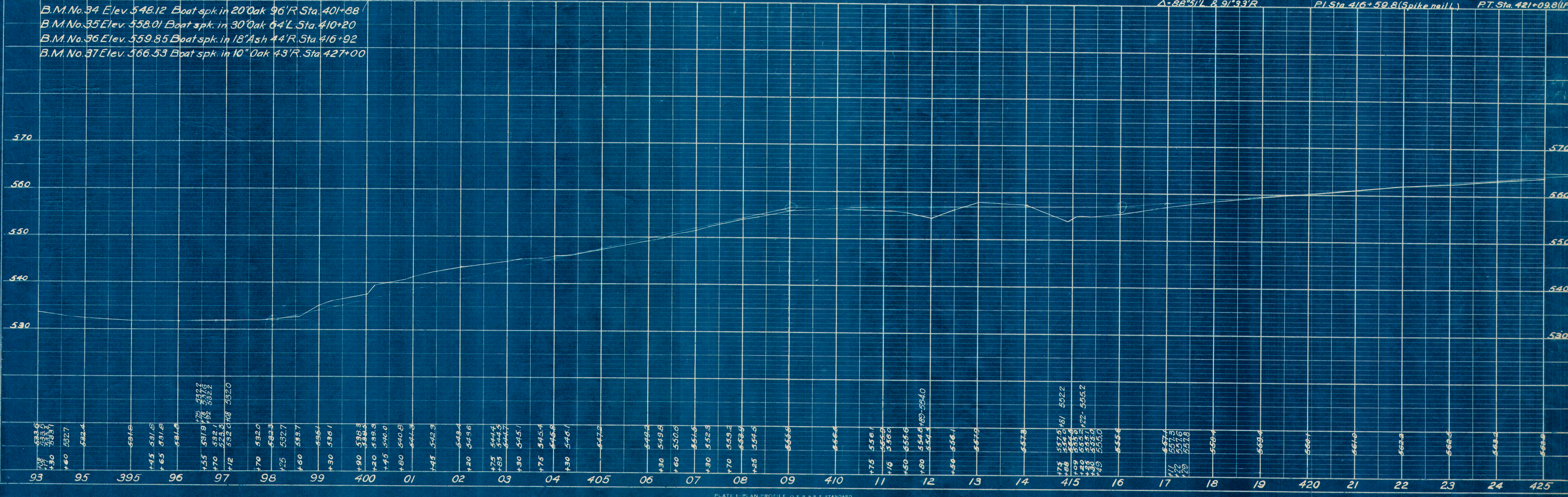
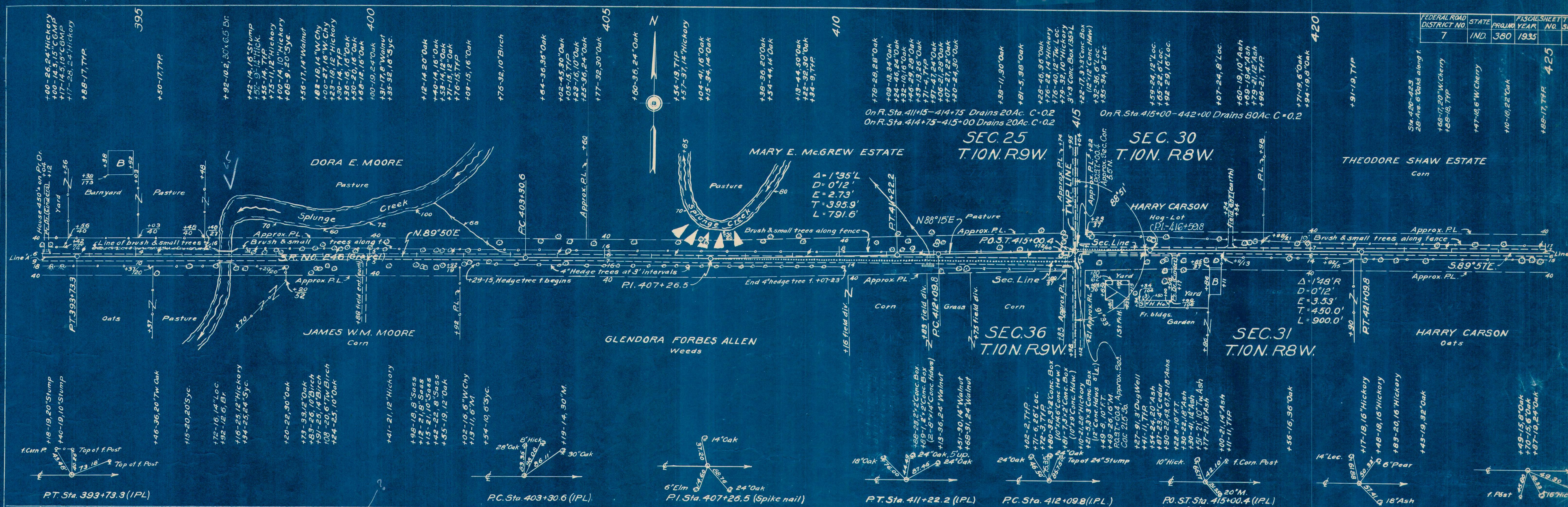
B.M. No. 31 Elev. 546.70 - U.S.G.S. A.M. No. 18 Prim. Trav. 1906-17 R. Sta. 362+56  
 B.M. No. 32 Elev. 532.46 - Boat Spk. in 40' Elm 129' L Sta. 372+78  
 B.M. No. 33 Elev. 543.62 - Boat Spk. in 16' Pear 53' R. Sta. 389+10



PLAN  
 T. J. Paggianni  
 Paul J. Frosch  
 1/24 1935  
 3/15 1935  
 NOTE: BOOK NO. 32767  
 SURVEY MADE BY WAY ORDERED

PROFILE  
 T. J. Paggianni  
 Paul J. Frosch  
 1/24 1935  
 3/15 1935  
 NOTE: BOOK NO. 32767  
 SURVEY MADE BY WAY ORDERED

FEDERAL ROAD DISTRICT NO.	STATE	PROJECT NO.	FISCAL YEAR	SHEET NO.	TOTAL SHEETS
7	IND.	380	1935	425	

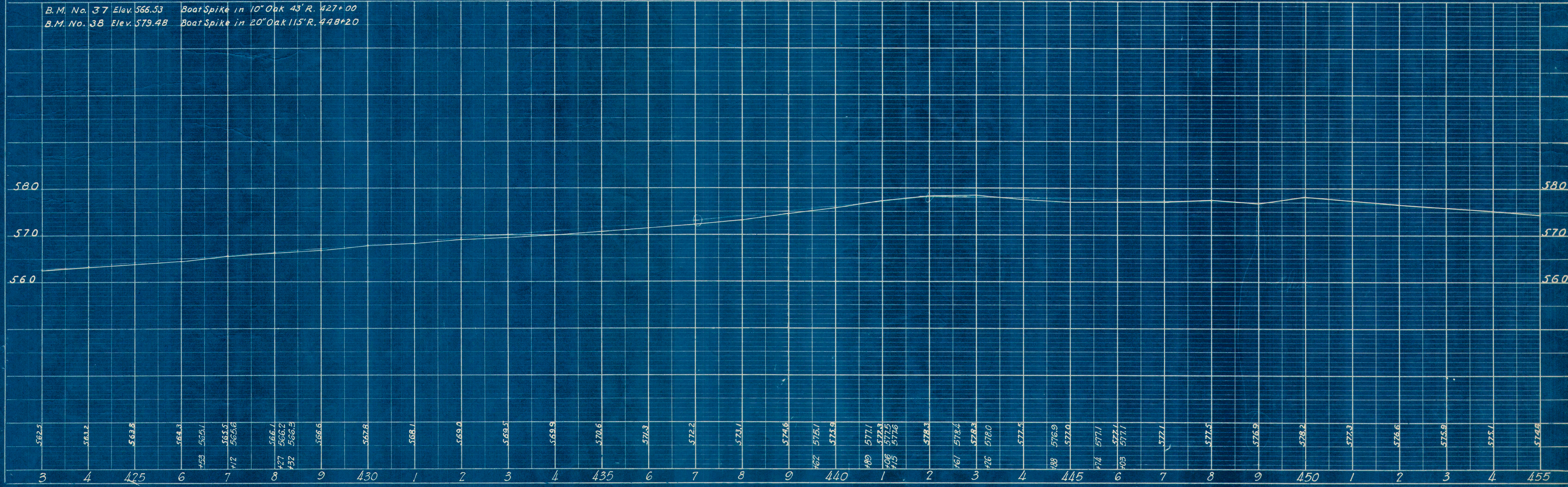
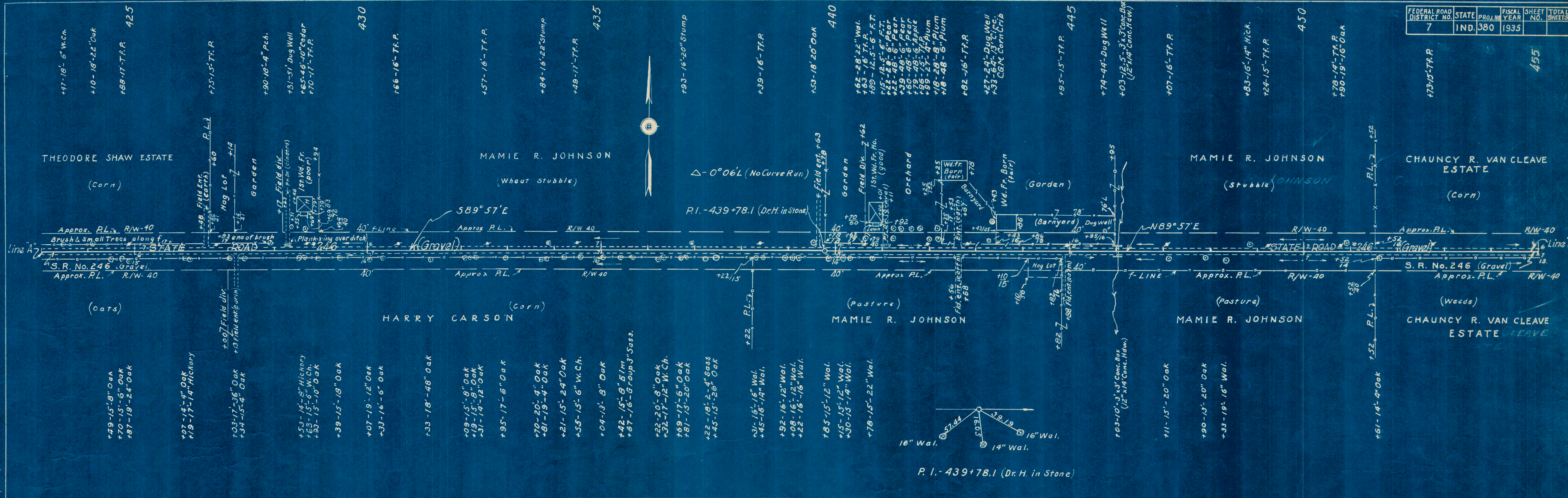




PLAN  
 DRAWN BY  
**T. J. Poggiani**  
 CHECKED BY  
**Paul J. Fosch**  
 DATE  
**3-3-35**  
 NOTE BOOK  
 NO. **32767**  
 SURVEYED BY  
**Wm. R. Jones**

PROFILE  
 DRAWN BY  
**T. J. Poggiani**  
 CHECKED BY  
**Paul J. Fosch**  
 DATE  
**3-3-35**  
 NOTE BOOK  
 NO. **32794**  
 SURVEYED BY  
**Wm. R. Jones**

FEDERAL ROAD DISTRICT NO.	STATE	PROJ. NO.	FISCAL YEAR	SHEET NO.	TOTAL SHEETS
7	IND.	380	1935	455	





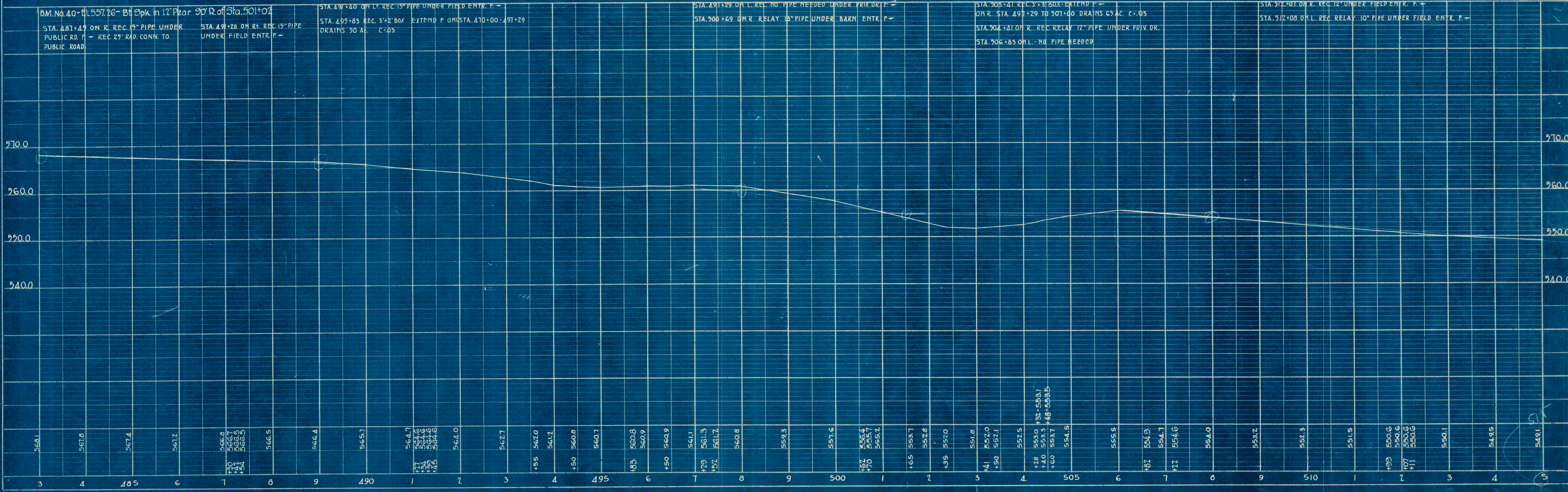
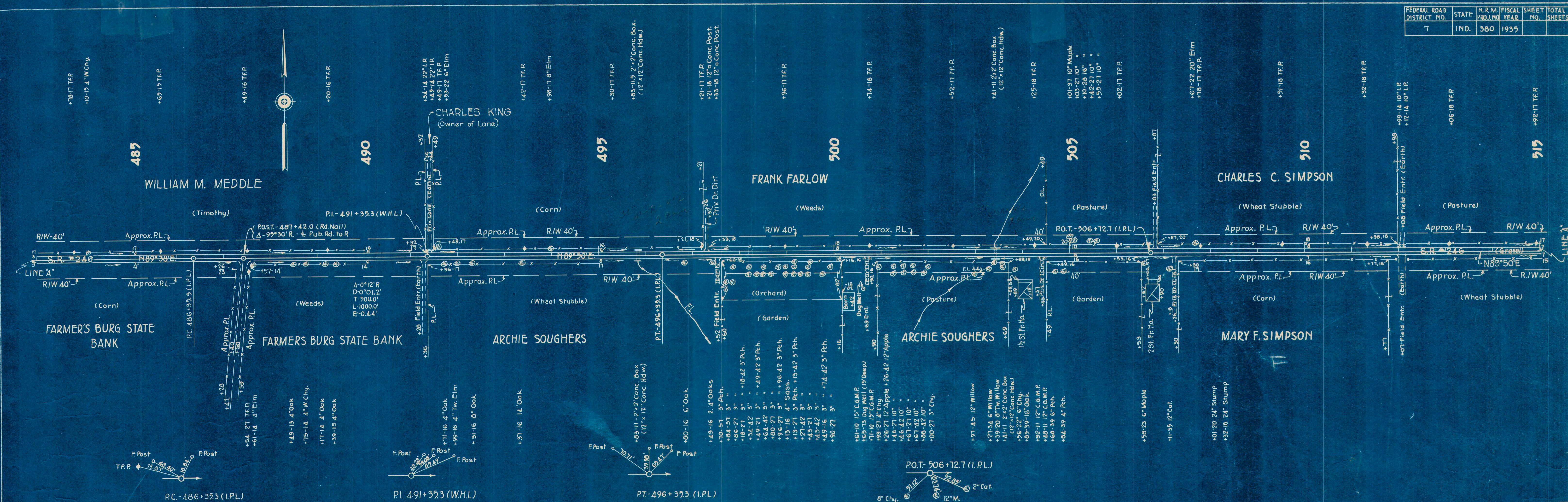




FEDERAL ROAD DISTRICT NO.	STATE	N.R.M. PROJ. NO.	FISCAL YEAR	SHEET NO.	TOTAL SHEETS
7	IND.	380	1939		

PLAN  
 REVISIONS  
 1-34  
 3-39  
 3-39  
 3-39  
 POGGIANI  
 FROSCIO  
 CALL  
 NOTE BOOK  
 ALUMINUM CHECKER  
 1/16" W. H. CHECKER  
 No. 1

PROFILE  
 REVISIONS  
 1-34  
 3-39  
 3-39  
 3-39  
 POGGIANI  
 FROSCIO  
 CALL  
 NOTE BOOK  
 1/16" W. H. CHECKER  
 1/16" W. H. CHECKER  
 No. 1

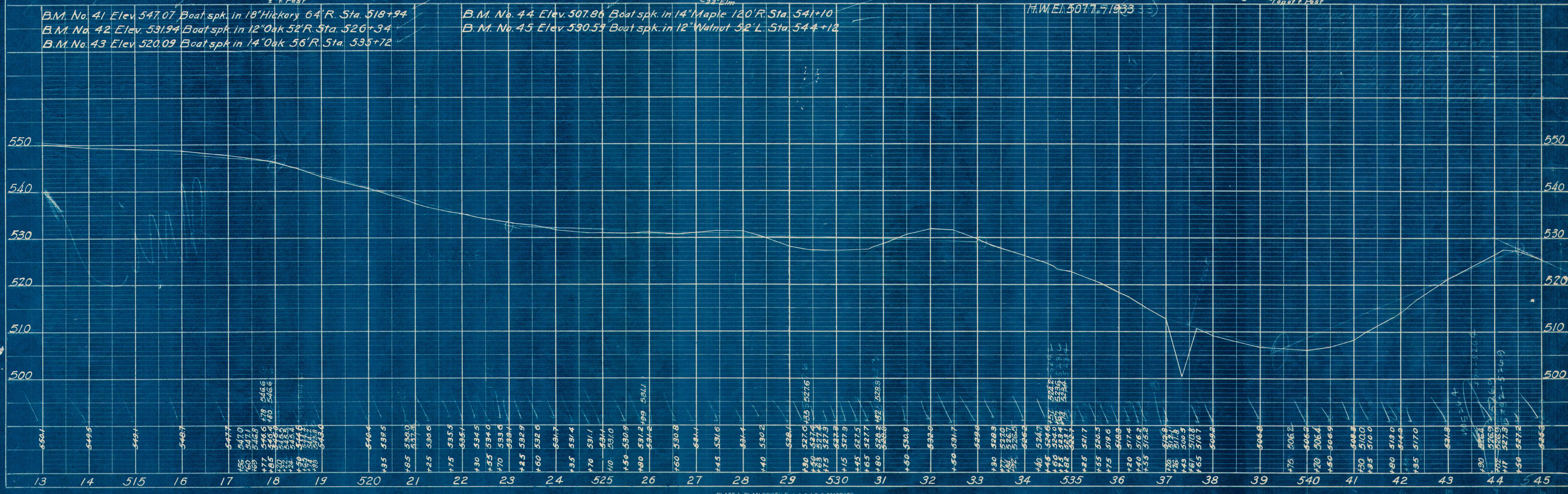
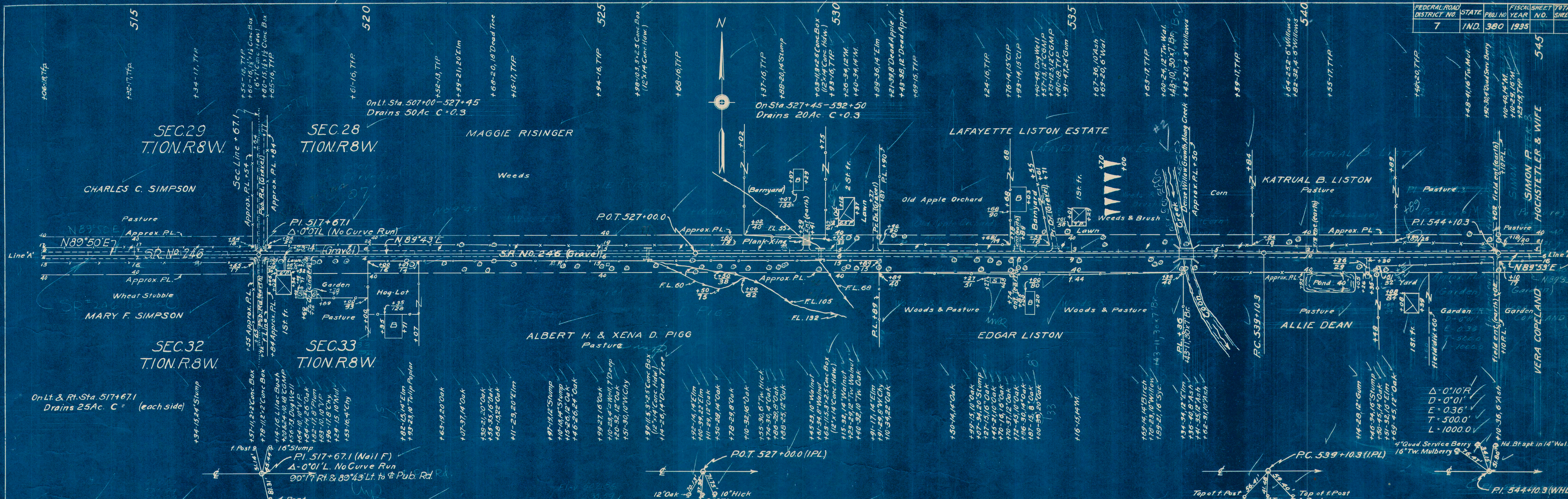




SURVEYED BY  
**T. J. Poggiani**  
 CHECKED BY  
**Paul J. Frasch**  
 DATE  
 7/24/35  
 SHEET NO.  
 3/35

PROFILE  
 SURVEYED BY  
**T. J. Poggiani**  
 CHECKED BY  
**Paul J. Frasch**  
 DATE  
 7/24/35  
 SHEET NO.  
 3/35

FEDERAL ROAD DISTRICT NO.	STATE	PROJ. NO.	FISCAL YEAR	SHEET NO.	TOTAL SHEETS
7	IND.	380	1935	545	545

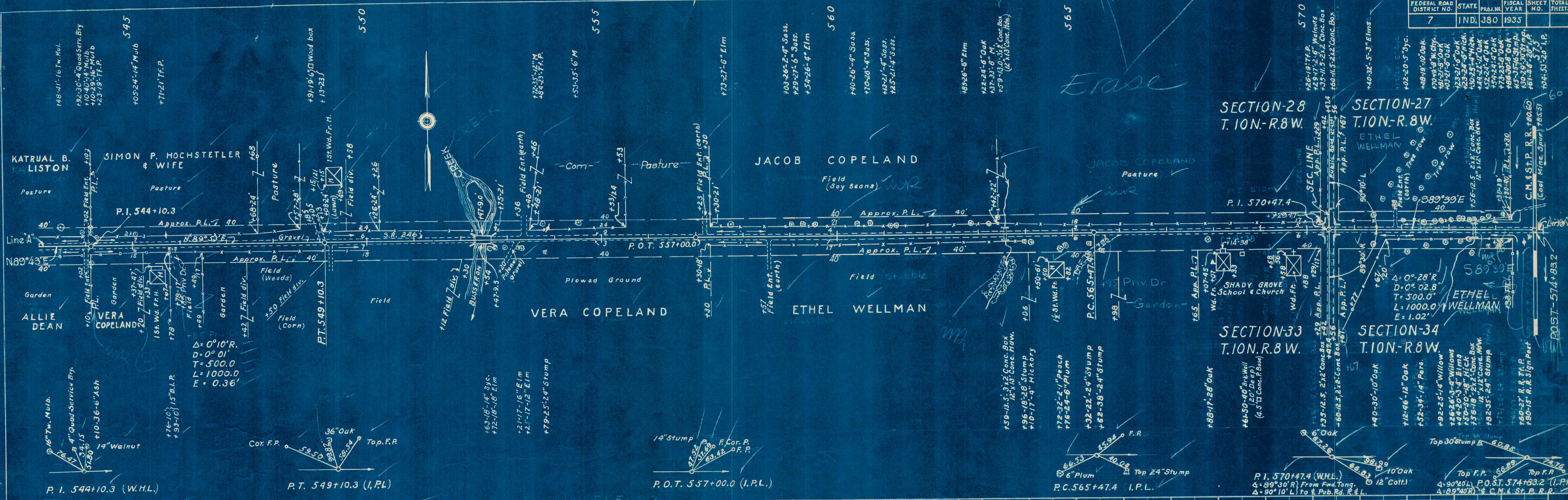




PLAN  
 T. J. Poggiani  
 Montgomery 7-34  
 Wm. R. Jones 3-35  
 NO. 3276

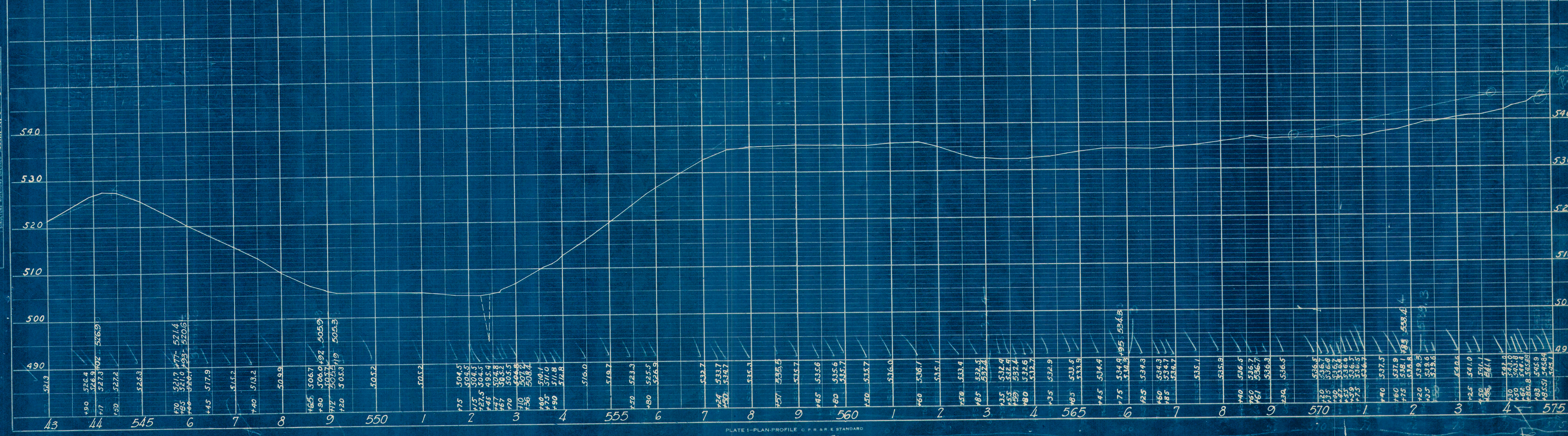
PROFILE  
 T. J. Poggiani  
 Montgomery 7-34  
 Wm. R. Jones 3-35  
 NO. 3279

FEDERAL ROAD DISTRICT NO.	STATE	PRJ. NO.	FISCAL YEAR	SHEET NO.	TOTAL SHEETS
7	IND.	380	1935		



1937 - H.W.E.I. 504.3

B.M. No. 45 - Elev. 530.59	Boat Spike in 12'	Walnut 5p'l. Sta. 544+12
B.M. No. 46 - 500.69	"	36 Elm 70' R. Sta. 532+10
B.M. No. 47 - 504.32	"	14 Maple 65' L. " 533+62
B.M. No. 48 - 532.15	"	30 Maple 95' R. " 565+88
B.M. No. 49 - 538.76	"	8 Hickory 77' R. " 573+77



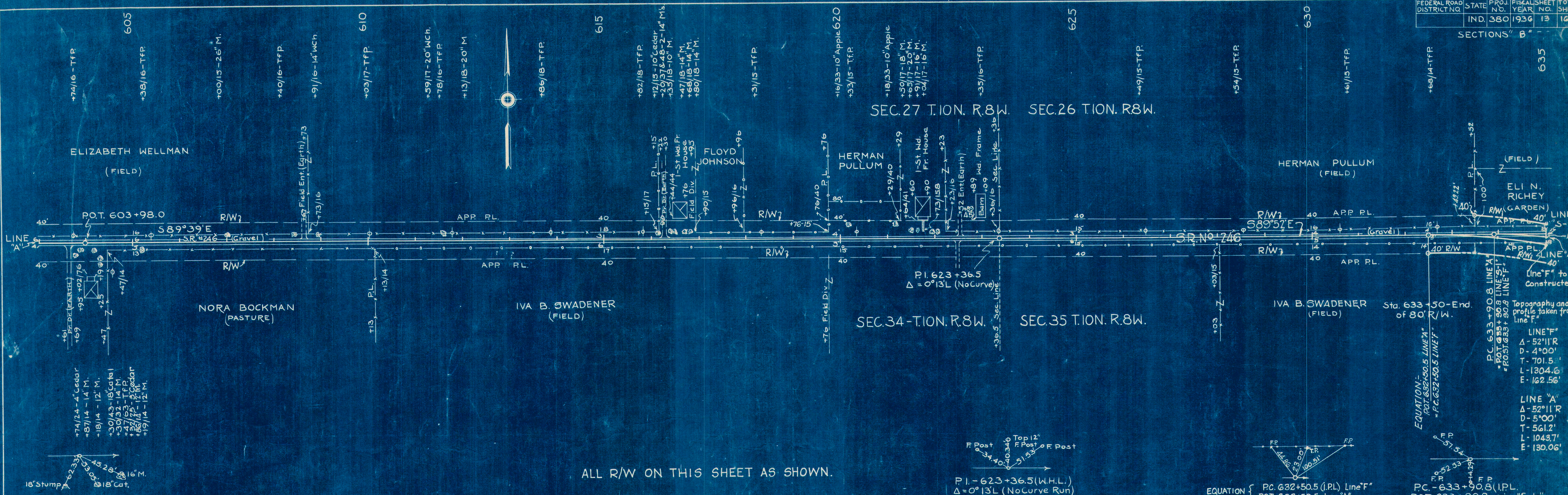




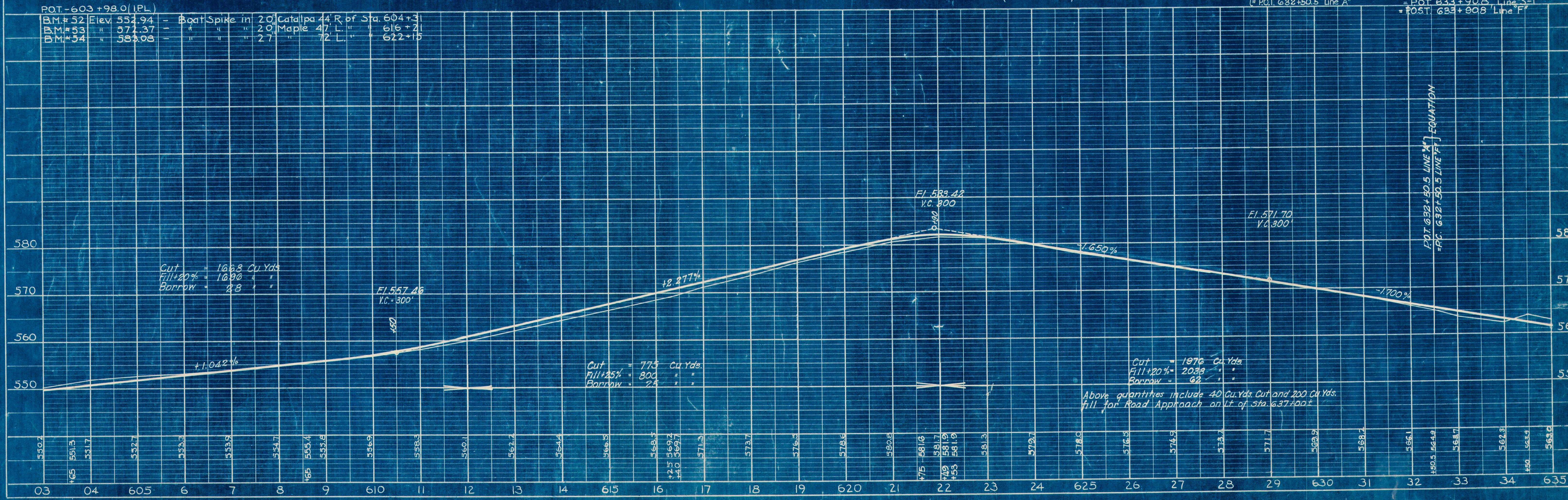


BY: J. J. BOCKMAN, J. J. MONTGOMERY, D. R. RINGO  
 CHECKED BY: J. J. BOCKMAN, J. J. MONTGOMERY, D. R. RINGO  
 DATE: 7-34, 3-35, 3-35  
 NOTE: BOOK 3262, SHEET 13, OF MAT CHECKED

BY: J. J. BOCKMAN, J. J. MONTGOMERY, D. R. RINGO  
 CHECKED BY: J. J. BOCKMAN, J. J. MONTGOMERY, D. R. RINGO  
 DATE: 7-34, 3-35, 3-35  
 NOTE: BOOK 3262, SHEET 13, OF MAT CHECKED



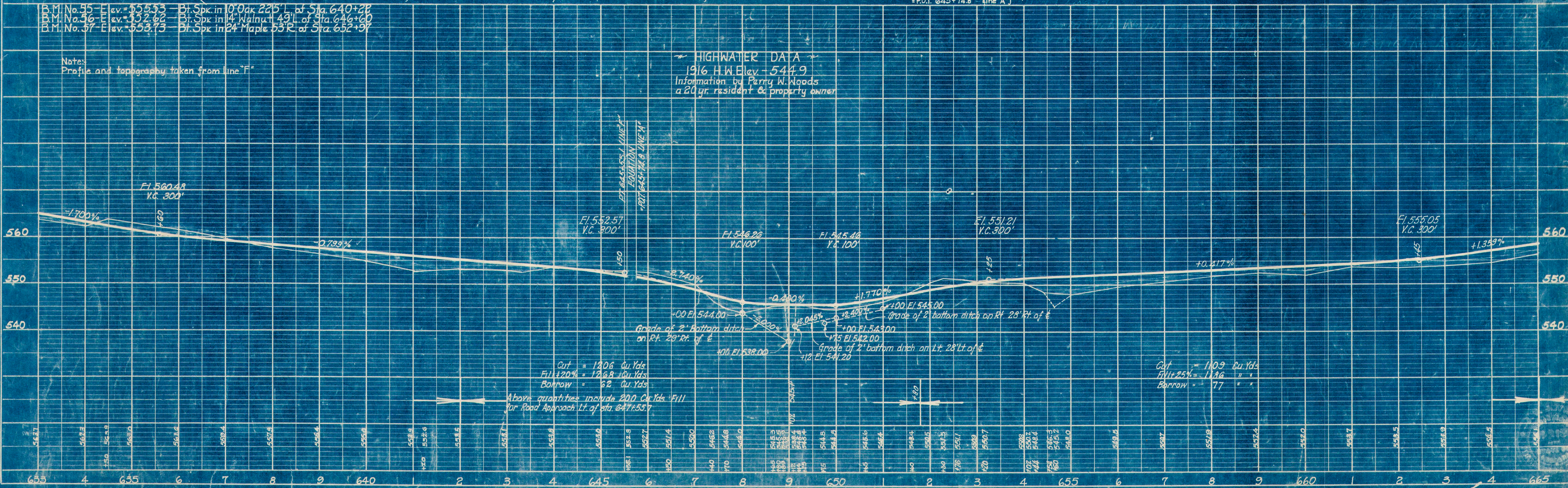
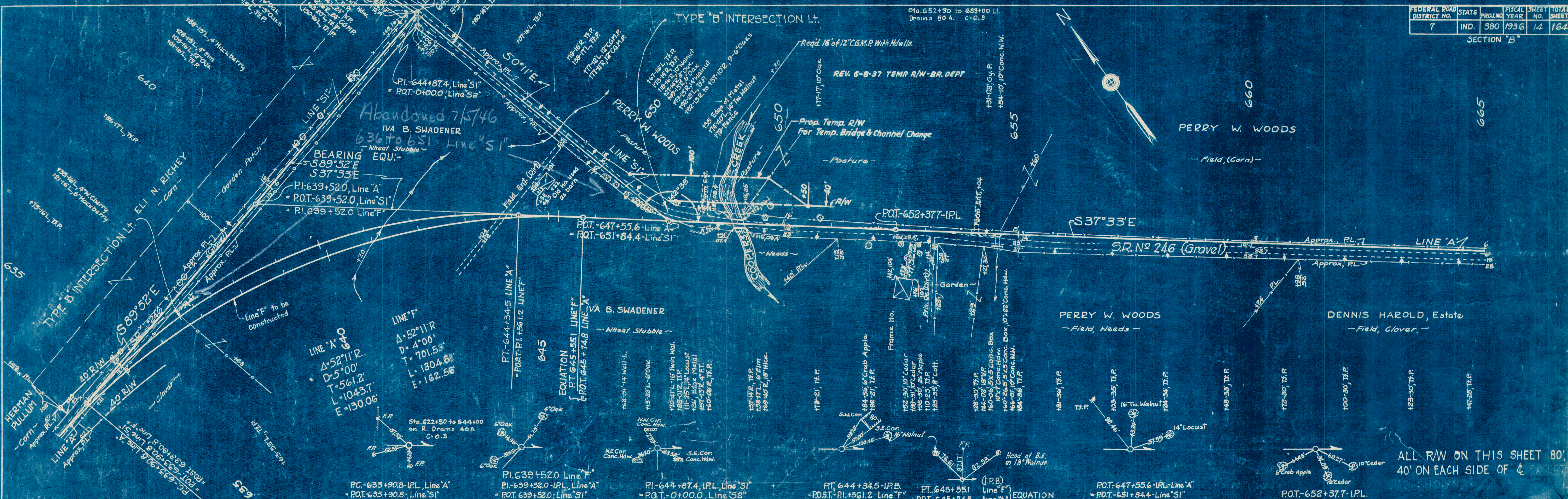
ALL R/W ON THIS SHEET AS SHOWN.





PLAN  
 DRAWN BY: E.F. COX  
 CHECKED BY: E.F. COX  
 DATE: 7-3-35

PROFILE  
 DRAWN BY: E.F. COX  
 CHECKED BY: E.F. COX  
 DATE: 7-3-35

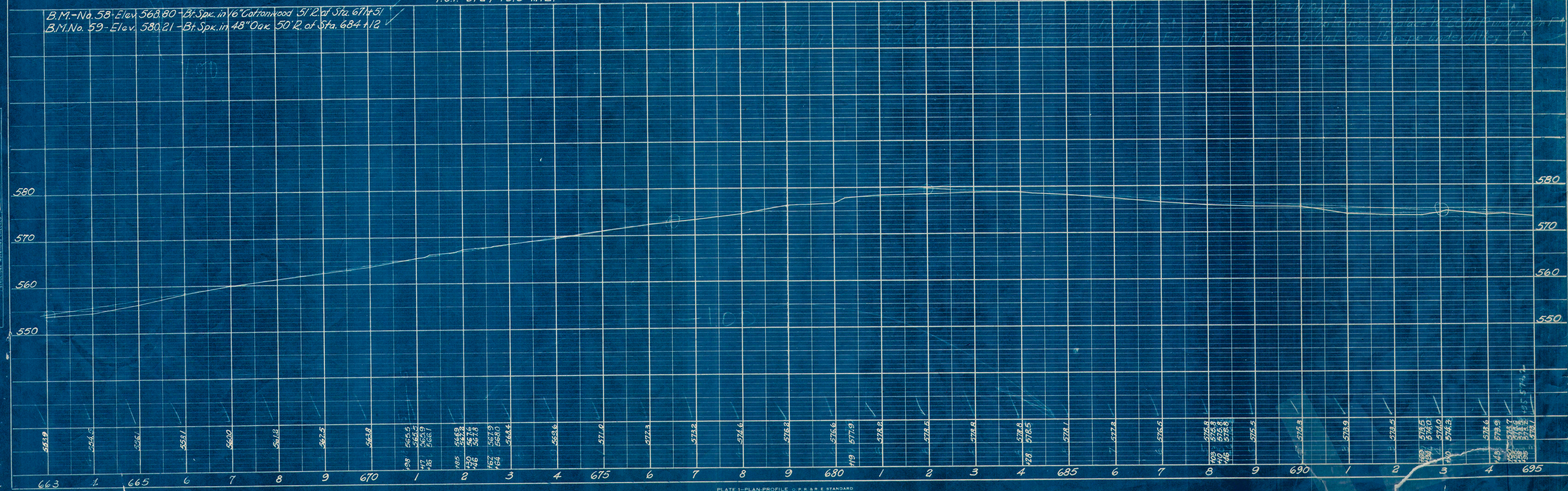
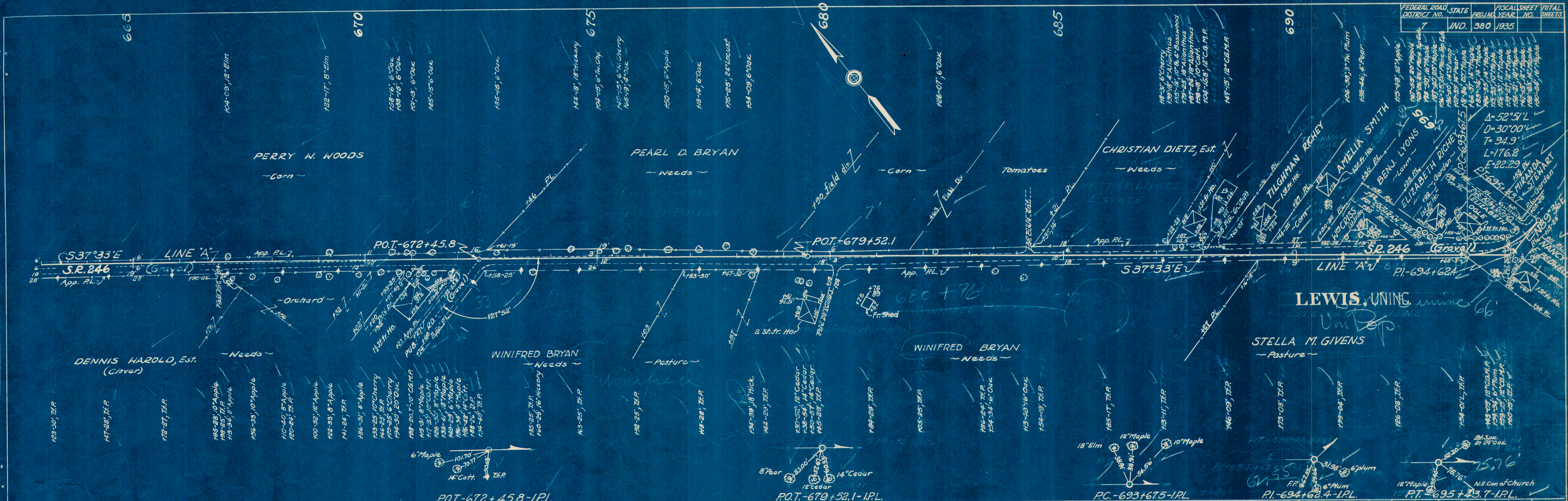




PLAN  
 SURVEYED BY T. J. Paggianni  
 PLOTTED BY F. F. Cox  
 NOTE BOOK NO. 3277  
 DATE 7-34-35

PROFILE  
 SURVEYED BY T. J. Paggianni  
 PLOTTED BY F. F. Cox  
 NOTE BOOK NO. 3280  
 DATE 7-34-35

FEDERAL ROAD DISTRICT NO.	STATE	PROJ. YEAR	FISCAL SHEET NO.	TOTAL SHEETS
7	IND.	1935	380	





BY T.J. Poggiani 7-34  
 PAUL J. FRASCH 3-34  
 Wm. R. Jones 3-34  
 SURVEYED, PLANNED, DRAWN, CHECKED, REVISIONS, DATE, BY, NO.

PROFILE  
 SURVEYED, PLANNED, DRAWN, CHECKED, REVISIONS, DATE, BY, NO.

