

| FEDERAL ROAD DISTRICT NO. | STATE | PROJ. NO. | FISCAL YEAR | SHEET NO. | TOTAL SHEETS |
|---------------------------|-------|-----------|-------------|-----------|--------------|
| 4                         | IND.  | 779 "A"   | 1961        | 1         | 55           |

# INDEX

| SHEET NO. | DESIGNATION   | B.P.R. APPROVAL | DATE ADOPTED 'A' or LATEST REVISION 'R' |
|-----------|---|-----------------|---|
| 1         | TITLE SHEET<br>ST'D. DIV. LANE (INTERSTATE)<br>ST'D. DIV. LANE (INTERSTATE)<br>ST'D. DIV. LANE (INTERSTATE)<br>ST'D. CROSS SECTION,<br>ST'D. CROSS SECTION,<br>ST'D. CROSS SECTION,   |                 |   |
| 2         | TYPICAL CROSS SECTION<br>ST'D. 8 INCH RAMP SECTION<br>ST'D. 10 INCH RAMP SECTION  |                 |   |
| 3-15      | ST'D. PAVEMENT JOINTS SHEET "A"<br>PLAN AND PROFILE   |                 |   |
| 16        | STRUCTURE DATA<br>STRUCTURE DATA<br>ESTIMATE OF QUANTITIES<br>ESTIMATE OF QUANTITIES  |                 |   |
| 17        | MISCELLANEOUS STANDARDS, SHEET "MA"<br>MISCELLANEOUS STANDARDS, SHEET "MB"<br>MISCELLANEOUS STANDARDS, SHEET "MC"<br>MISCELLANEOUS STANDARDS, SHEET "MD"<br>MISCELLANEOUS STANDARDS, SHEET "ME"<br>MISCELLANEOUS STANDARDS, SHEET "MF"<br>MISCELLANEOUS STANDARDS, SHEET "MG"<br>MISCELLANEOUS STANDARDS, SHEET "MH"<br>MISCELLANEOUS STANDARDS, SHEET "MI"<br>MISCELLANEOUS STANDARDS, SHEET "MJ"<br>MISCELLANEOUS STANDARDS, SHEET "MK"<br>MISCELLANEOUS STANDARDS, SHEET "MN"<br>MISCELLANEOUS STANDARDS, SHEET "MP" | 3-9-61          | "R" 2-13-61                             |
| 18        | MISCELLANEOUS STANDARDS, SHEET "MQ"<br>MISCELLANEOUS STANDARDS, SHEET "MR"<br>MISCELLANEOUS STANDARDS, SHEET "S"<br>MISCELLANEOUS STANDARDS, SHEET "S-I"<br>MISCELLANEOUS STANDARDS, SHEET "MT"<br>MISCELLANEOUS STANDARDS, SHEET "MU"<br>MISCELLANEOUS STANDARDS, SHEET "MV"<br>MISCELLANEOUS STANDARDS, SHEET "MV-1"  | 8-9-61          | "R" 10-14-60                            |
| 19        | MISCELLANEOUS STANDARDS, SHEET "N"  | 5-9-61          | "R" 4-11-61                             |
| 20        | MISCELLANEOUS STANDARDS, SHEET "O"  | 8-9-61          | "R" 10-14-60                            |
| 21        | MISCELLANEOUS STANDARDS, SHEET "P"  | 11-23-60        | "R" 10-24-60                            |
| 22        | ST'D. FOR SUPERELEVATION<br>ST'D. FOR SUPERELEVATION AND WIDENING OF CURVES   | 1-26-62         | "A" - Dec. 1961                         |
| 22A       | ST'D. DETOUR SIGNS, SHEET 1   | 1-26-62         | "A" - Dec. 1961                         |
| 22B       | ST'D. DETOUR SIGNS, SHEET 2   | 1-26-62         | "A" - Dec. 1961                         |
| 22C       | ST'D. DETOUR SIGNS, SHEET 3   | 1-26-62         | "A" - Dec. 1961                         |
| 22C       | ST'D. DETOUR SIGNS, SHEET 4   | 1-26-62         | "R" - 12-1-61                           |
| 23-55     | CROSS SECTIONS  |                 |   |

## STATE OF INDIANA STATE HIGHWAY DEPARTMENT

# PLAN AND PROFILE OF PROPOSED STATE HIGHWAY ST. PROJECT NO. 779 "A" JEFFERSONVILLE-COLUMBUS

(BEGINNING AT A POINT ON ROAD I-65, APPROXIMATELY 1410 FEET SOUTH OF ROAD S.R. 60 AND PROCEEDING IN A NORTHERLY DIRECTION TO A POINT ON ROAD I-65, APPROXIMATELY 3093 FEET SOUTH OF THE CLARK-SCOTT COUNTY LINE, ALL IN CLARK COUNTY.)

# Code 0008

| DESIGN DATA              |        |
|--------------------------|--------|
| A.D.T. (19 )             | V.P.D. |
| A.D.T. (19 ) PROJECTED   | V.P.D. |
| D.H.V.                   | V.P.D. |
| DIRECTIONAL DISTRIBUTION | %      |
| TRUCKS                   | %      |
| DESIGN SPEED             | M.P.H. |
| ACCESS CONTROL           |        |

GROSS LENGTH: 16.084 MI.  
NET LENGTH: 14.245 MI.  
SCALES:-  
PLAN (LONG:- 1"=100' PROFILE (HORIZ:- 1"=100'  
TRANS:- 1"=100' VERT:- 1"=10')

| REVISIONS |         |                 |
|-----------|---------|-----------------|
| SHEET NO. | DATE    | REVISED         |
| 6         | 7-23-62 | PROVISIONAL R/W |

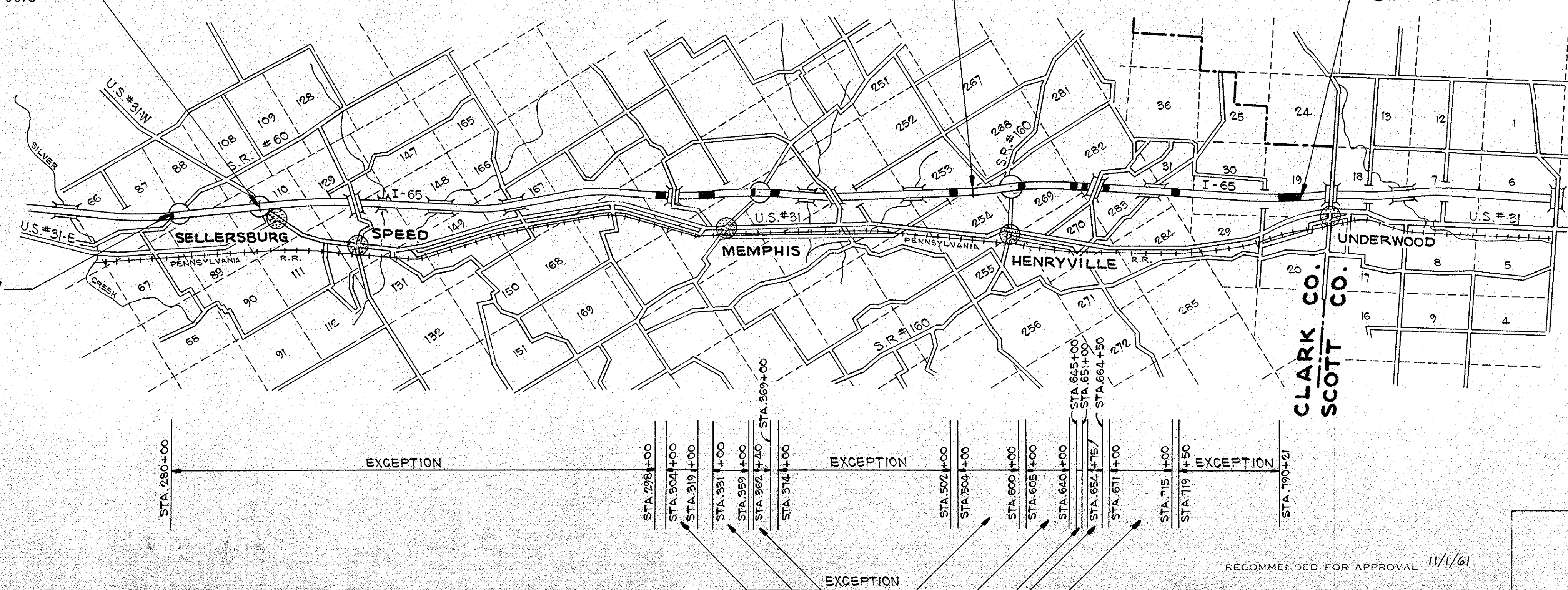
EQUATION:-  
372+29.7 "E"  
=1+00.0 "P"

EQUATION:-  
515+86.5 BACK  
=566+00 AHEAD

SCALE 1" = 1 MILE

BEGINNING OF ST. PROJ. 779 "A"  
STA. 273+90

END OF ST. PROJECT 779 "A"  
STA. 802+00



APPROVED 11-2-61

CHIEF ENGINEER INDIANA STATE HIGHWAY COMMISSION

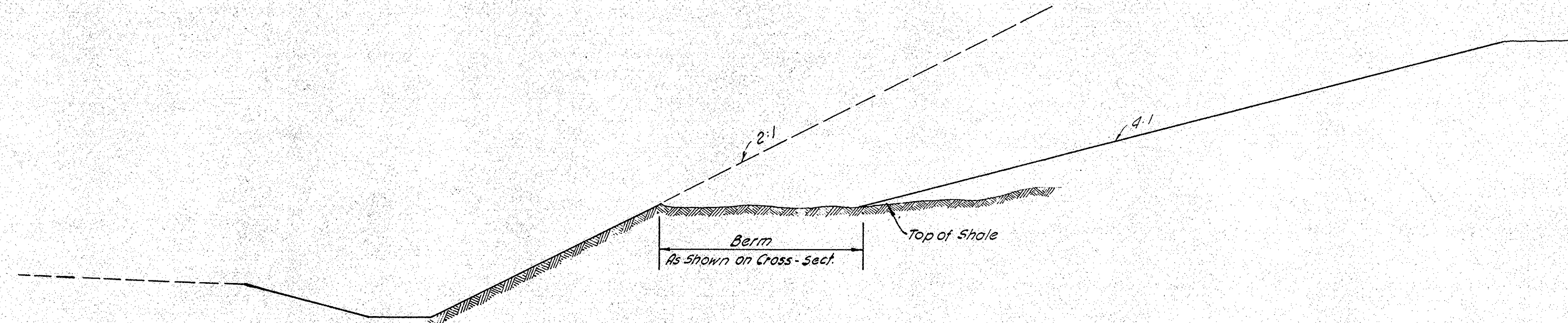
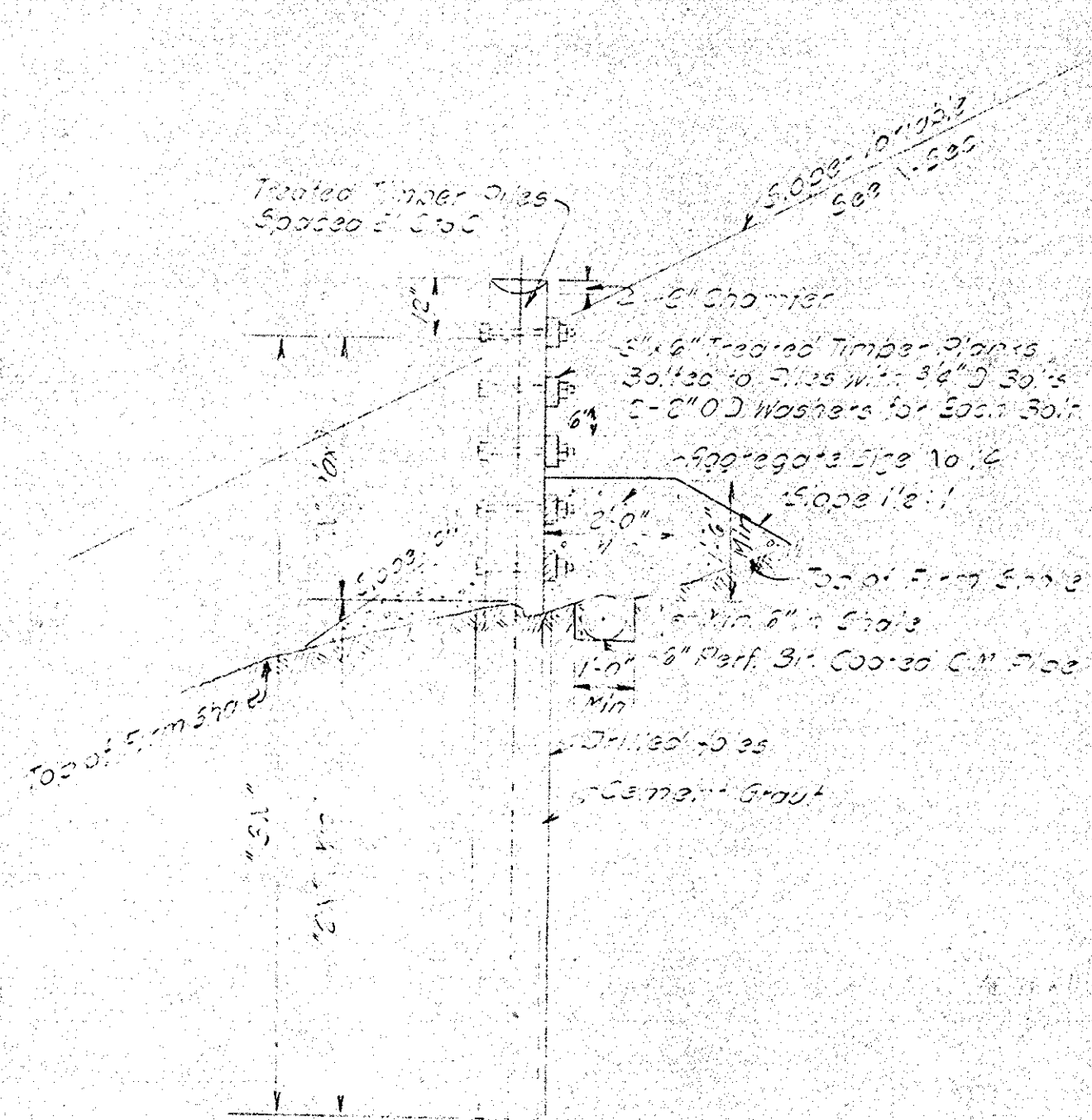
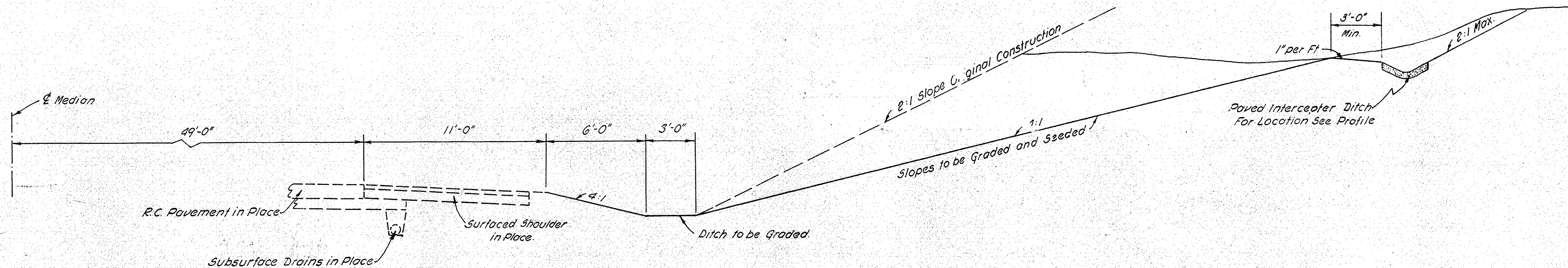
Code: 0008  
St. - 779 "A"  
I-65 Clark County  
15 Sheets

RECOMMENDED FOR APPROVAL 11/1/61





| FEDERAL ROAD DISTRICT NO. | STATE | PROJ. NO. | FISCAL YEAR | SHEET NO. | TOTAL SHEETS |
|---------------------------|-------|-----------|-------------|-----------|--------------|
| 4                         | IND.  | 719 A     | 1961        | 2         |              |



# TYPICAL CROSS SECTIONS

SCALE: 1/4" = 1'-0"

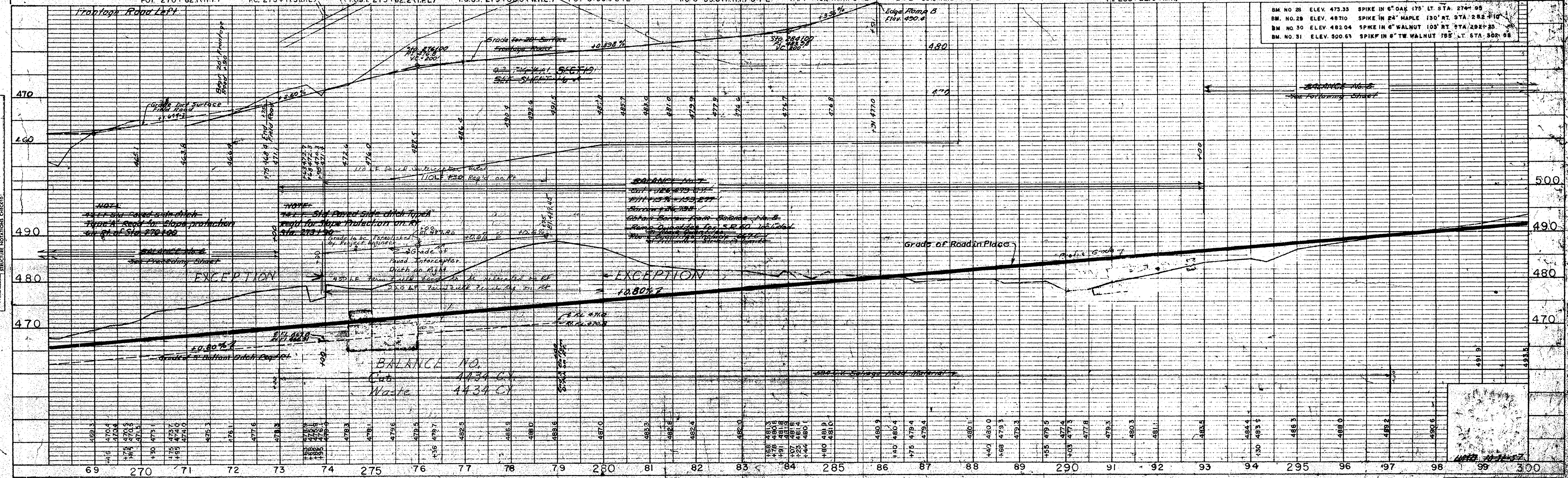
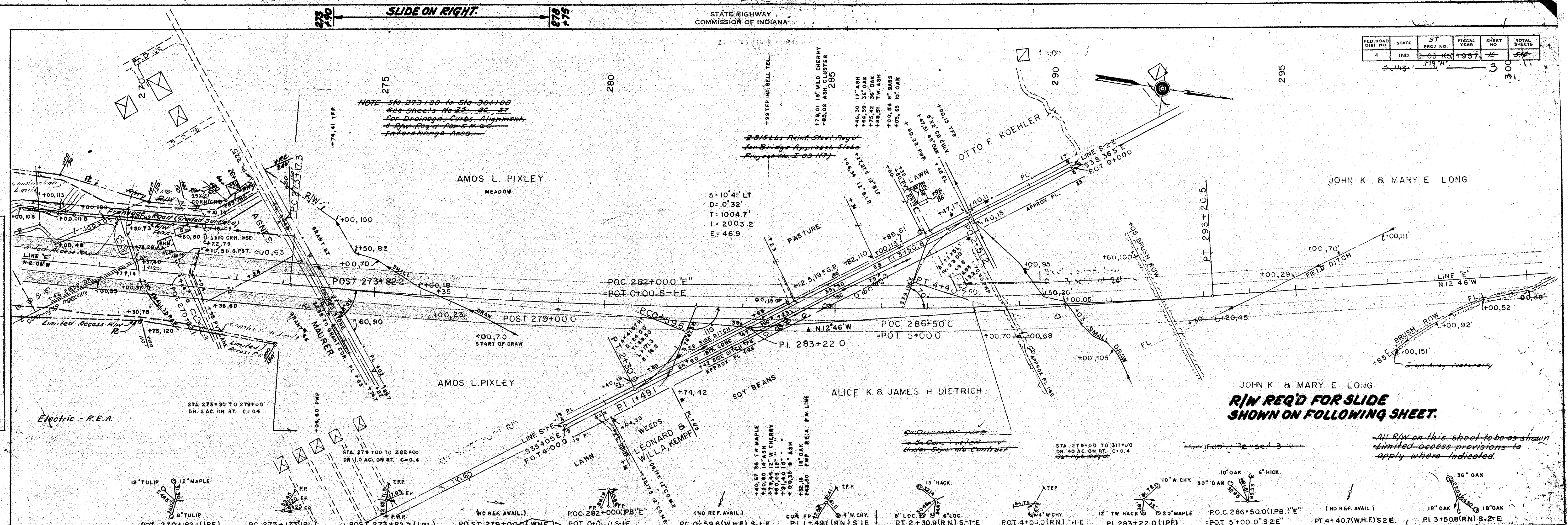
APPROVED  
CHIEF ENGINEER - INDIANA STATE HIGHWAY COMMISSION

RECOMMENDED FOR APPROVAL

ENGINEER OF ROAD DESIGN, INDIANA STATE HIGHWAY COMMISSION



| FED. ROAD DIST. NO. | STATE | ST. PROJ. NO. | FISCAL YEAR | SHEET NO. | TOTAL SHEETS |
|---------------------|-------|---------------|-------------|-----------|--------------|
| 4                   | IND.  | 2-03 (10)     | 1957        | 16        | 546          |

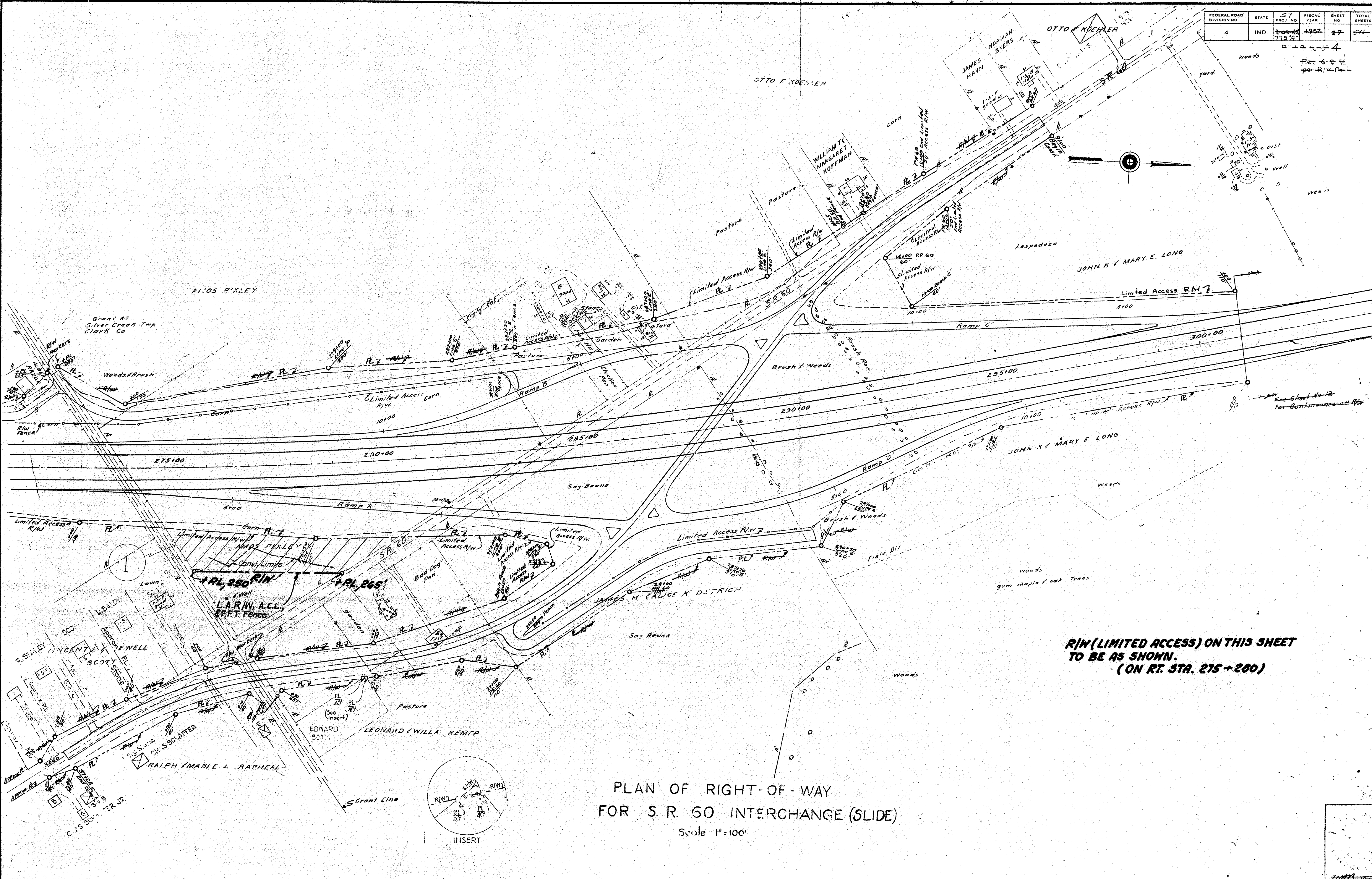


DATE: \_\_\_\_\_  
BY: \_\_\_\_\_  
CHECKED: \_\_\_\_\_  
DATE: \_\_\_\_\_

DATE: \_\_\_\_\_  
BY: \_\_\_\_\_  
CHECKED: \_\_\_\_\_  
DATE: \_\_\_\_\_

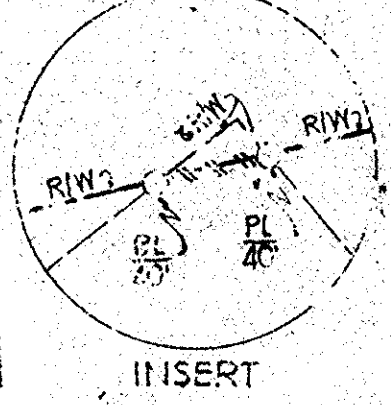


| FEDERAL ROAD DIVISION NO. | STATE | ST PROJ NO | FISCAL YEAR | SHEET NO | TOTAL SHEETS |
|---------------------------|-------|------------|-------------|----------|--------------|
| 4                         | IND.  | 1-00-10    | 1952        | 27       | 44           |



**R/W (LIMITED ACCESS) ON THIS SHEET  
TO BE AS SHOWN.  
(ON RT. STA. 275+200)**

**PLAN OF RIGHT-OF-WAY  
FOR S. R. 60 INTERCHANGE (SLIDE)**  
Scale 1"=100'







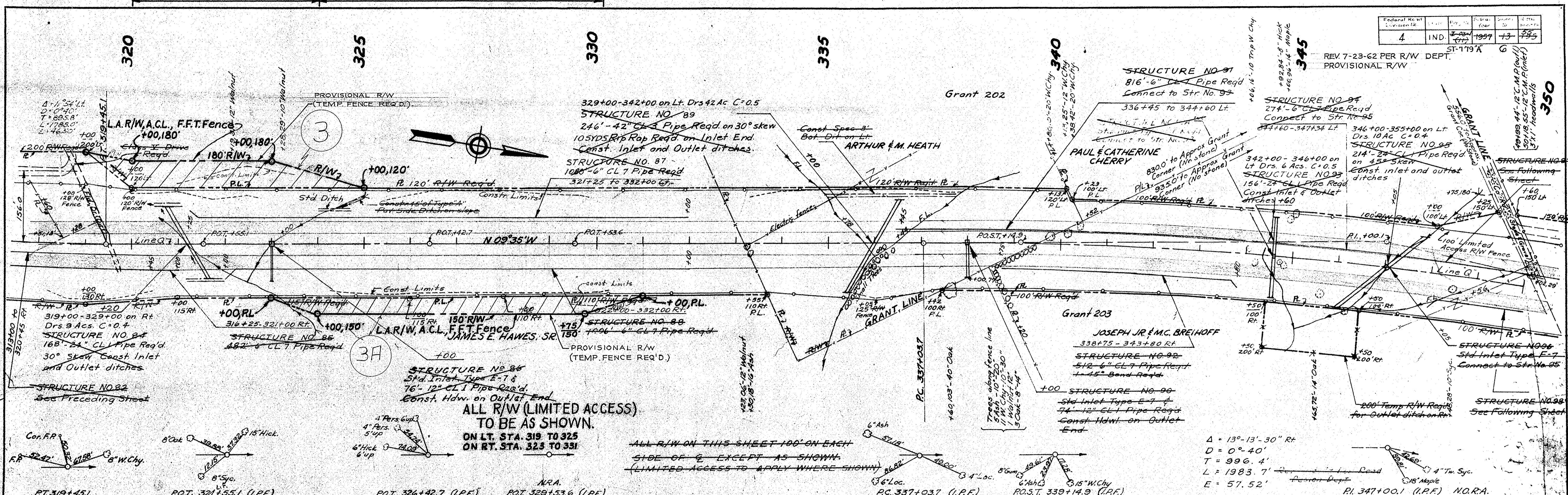


SLIDE AREA ON LT.

SLIDE AREA ON RT.

|               |          |          |          |          |
|---------------|----------|----------|----------|----------|
| Federal Route | IND      | 1957     | 13       | 285      |
| Division      | 4        | IND      | 1957     | 13       |
| Project       | 4        | IND      | 1957     | 13       |
| Sheet         | 4        | IND      | 1957     | 13       |
| Scale         | 1" = 40' | 1" = 40' | 1" = 40' | 1" = 40' |

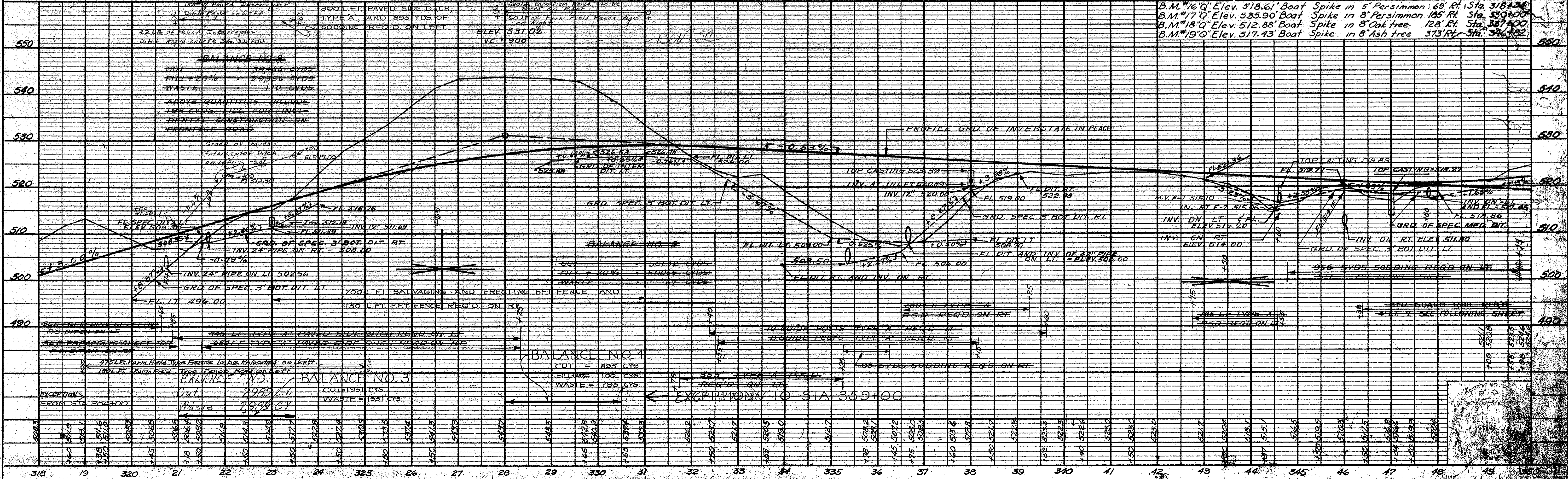
REV 7-23-62 PER R/W DEPT.  
PROVISIONAL R/W



**ALL R/W (LIMITED ACCESS)  
TO BE AS SHOWN.  
ON LT. STA. 319 TO 325  
ON RT. STA. 325 TO 331**

**ALL R/W ON THIS SHEET 100' ON EACH  
SIDE OF & EXCEPT AS SHOWN.  
(LIMITED ACCESS TO APPLY WHERE SHOWN)**

$\Delta = 13^{\circ}-13'-30''$  Rt  
 $D = 0^{\circ}-40'$   
 $T = 996.4'$   
 $L = 1983.7'$   
 $E = 57.52'$



**BALANCE NO. 4**  
CUT = 895 CYS.  
FILL = 100 CYS.  
WASTE = 785 CYS.

**EXCEPTION TO STA 359+00**

**BALANCE NO. 3**  
CUT = 2085 CYS.  
FILL = 1951 CYS.  
WASTE = 1831 CYS.

DATE: 10/1/56  
BY: V.D. Donald  
CHECKED: R.D. Luce  
NOTE: NOTE BOOK GRADES CHECKED  
NO. 22582  
STRUCTURE NOTING BY: C.W.

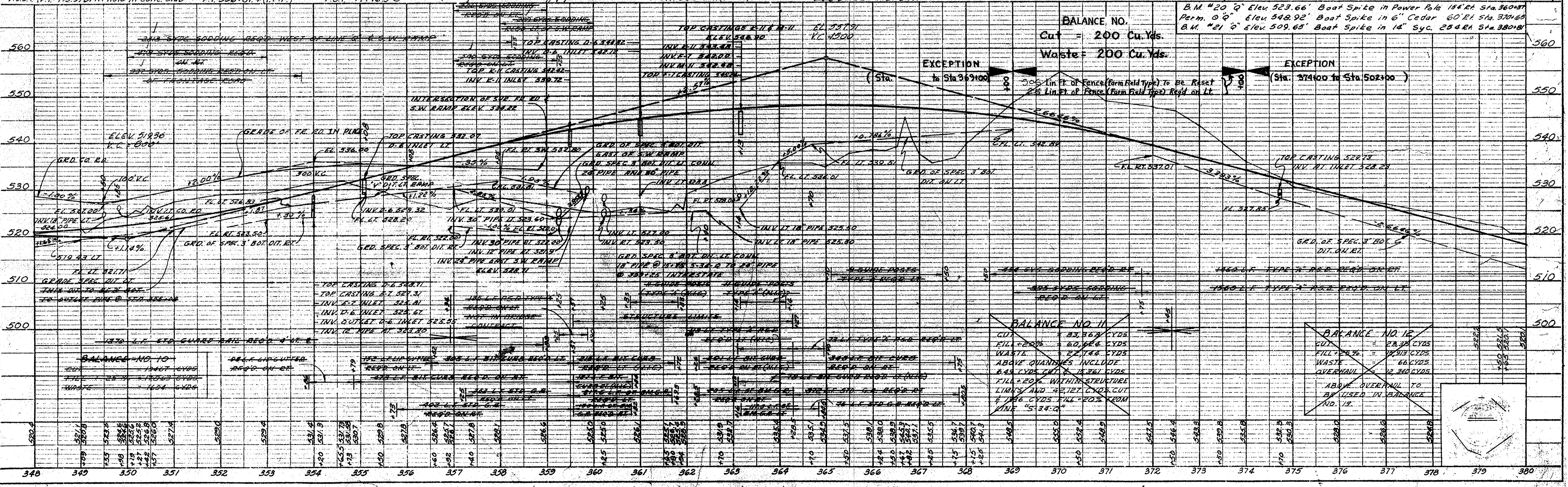
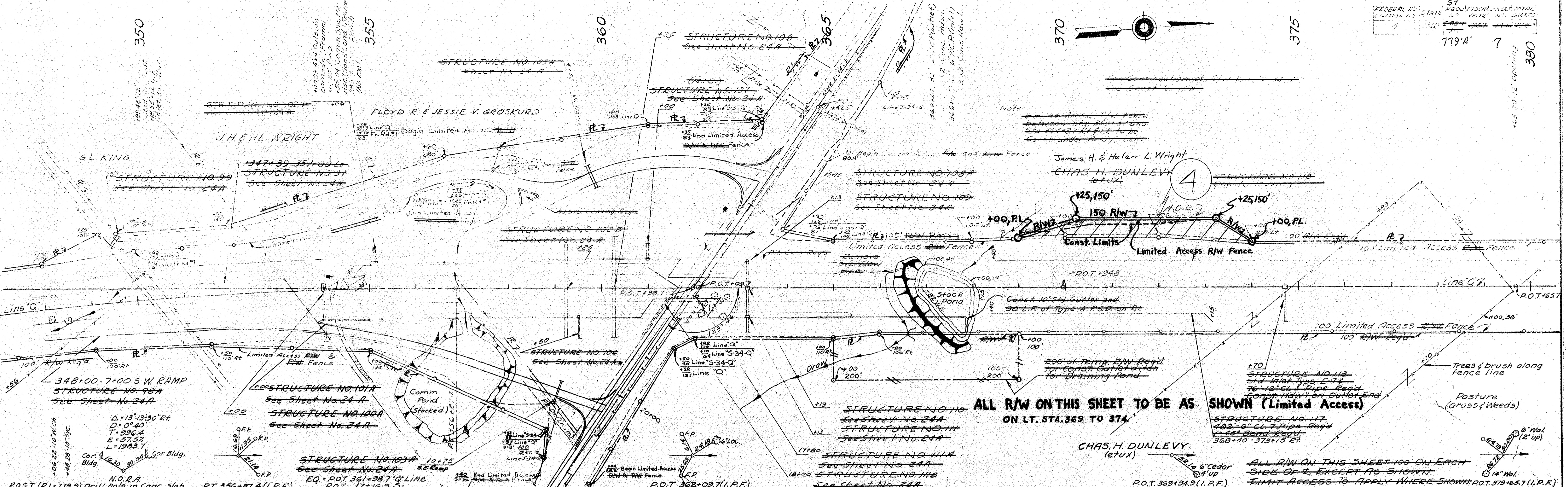
DATE: 10/1/56  
BY: V.D. Donald  
CHECKED: R.D. Luce  
NOTE: NOTE BOOK GRADES CHECKED  
NO. 22582  
STRUCTURE NOTING BY: C.W.



SLIDE ON LT.  
See Following Sheet

SLIDE ON LEFT

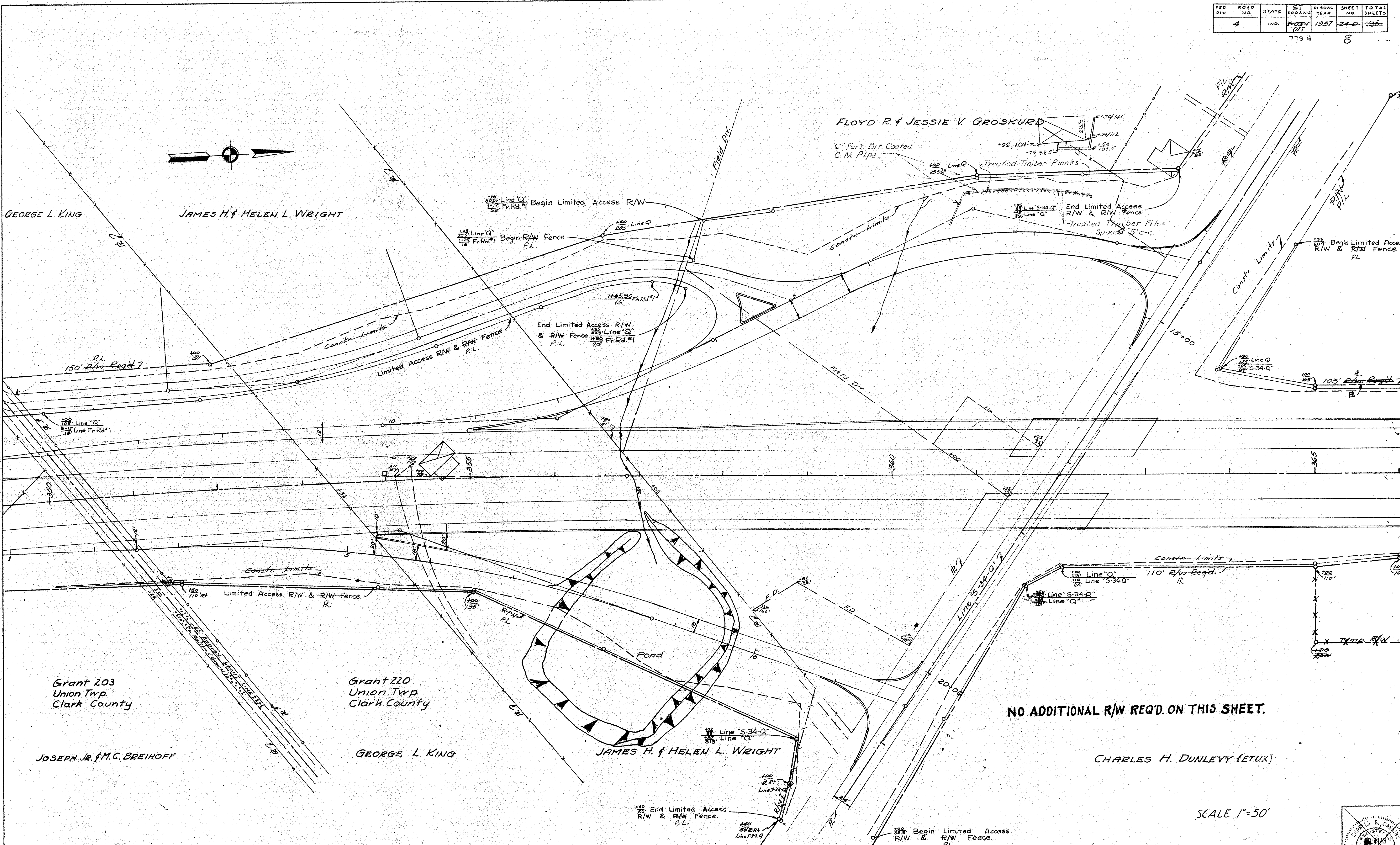
FEDERAL ROAD DISTRICT NO. 11  
STATE OF ILLINOIS  
DIVISION OF HIGHWAYS  
ST. LOUIS, MO.  
779'4" 7



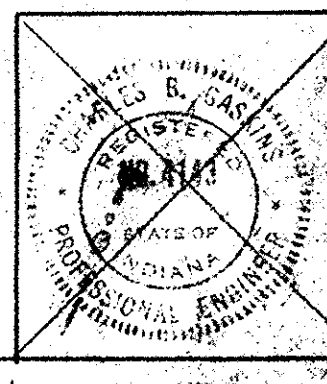


| FED. ROAD DIV. | ROAD NO. | STATE | ST. PROJ. NO. | FISCAL YEAR | SHEET NO. | TOTAL SHEETS |
|----------------|----------|-------|---------------|-------------|-----------|--------------|
| 4              | IND.     | IND.  | 703-7         | 1957        | 24-0      | 195          |

779 H 8



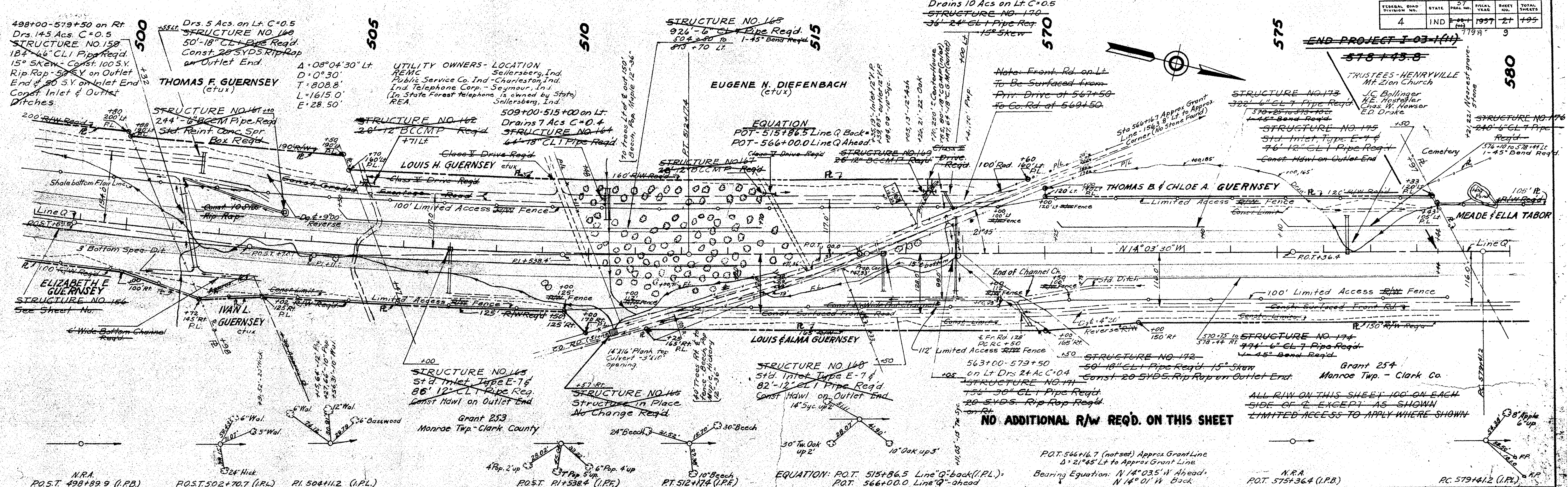
# PLAN OF RIGHT-OF-WAY MEMPHIS INTERCHANGE



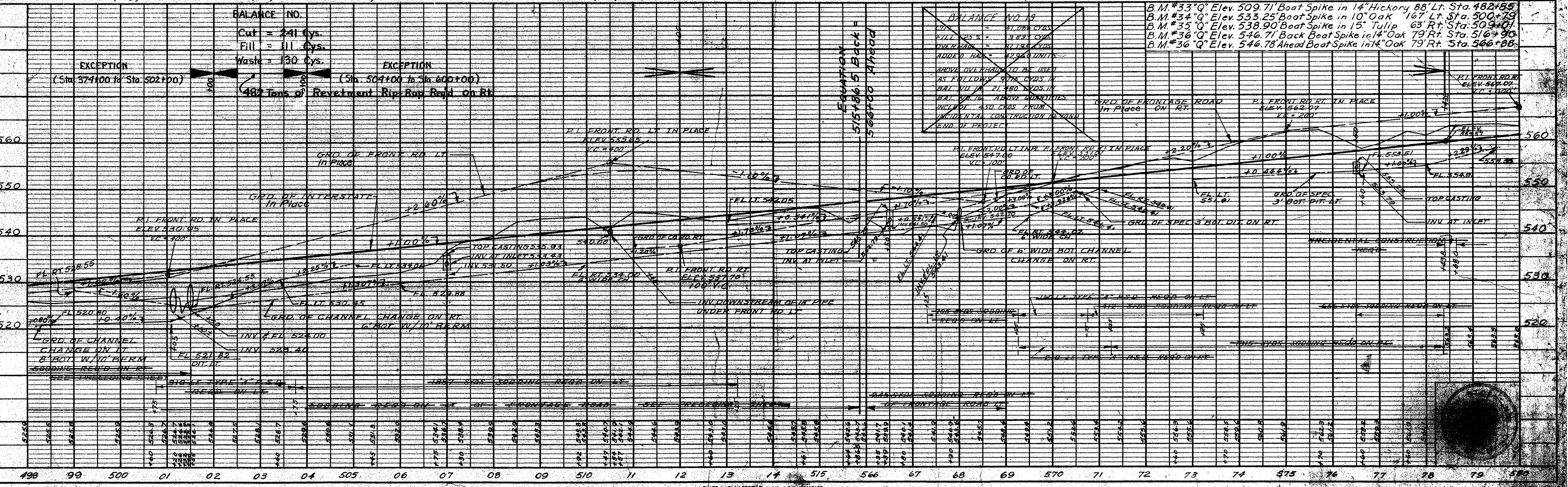


SLIDE ON RIGHT

| FEDERAL ROAD DIVISION NO. | STATE | PROJECT NO. | FISCAL YEAR | SHEET NO. | TOTAL SHEETS |
|---------------------------|-------|-------------|-------------|-----------|--------------|
| 4                         | IND   | 1957        | 27          | 195       |              |



NO ADDITIONAL R/W REQ'D. ON THIS SHEET



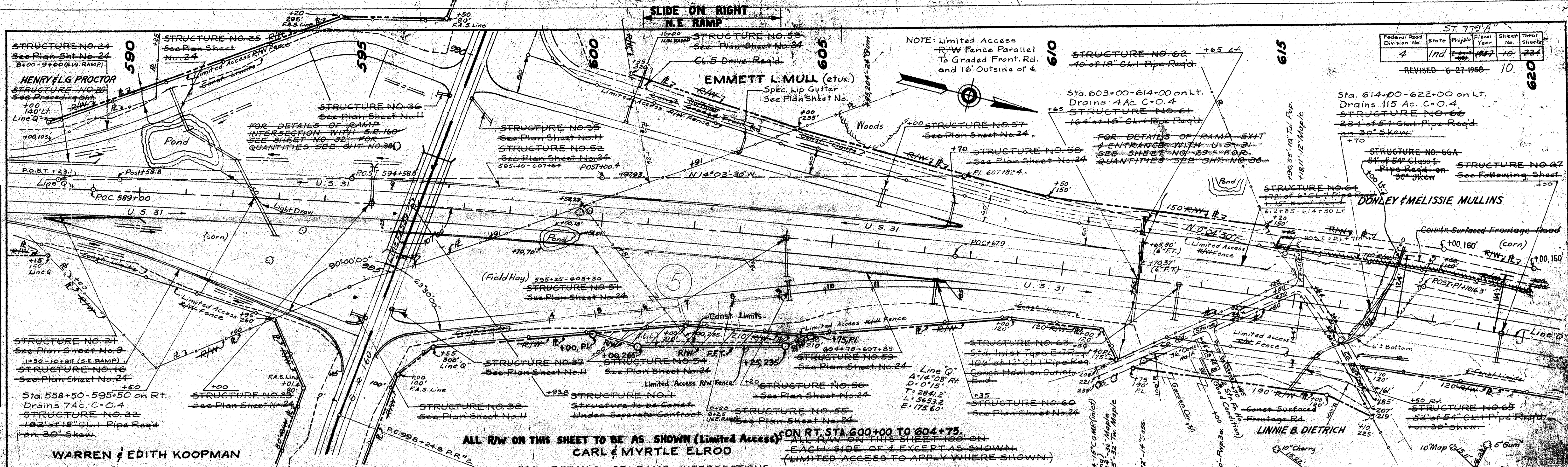
BALANCE NO.  
 Cut = 241 Cys.  
 Fill = 111 Cys.  
 Waste = 130 Cys.

EXCEPTION  
 (Sta. 374+00 to Sta. 502+00)  
 482 Tons of Revetment Rip-Rap Req'd on Rt

BALANCE NO. 19  
 CUT = 21,075 CYS.  
 FILL = 25,500 CYS.  
 OVERBURDEN = 11,195 CYS.  
 ADDED BANK = 27,940 UNITS  
 ABOVE OVERHEADS TO BE USED AS FOLLOWS: 978 CYS. IN BAL. NO. 18, 21,562 CYS. IN BAL. NO. 19 ABOVE QUANTITIES WILL NOT BE USED FROM INCIDENTAL CONSTRUCTION BEHIND END OF PROJECT.

B.M. #33 "Q" Elev. 509.71' Boat Spike in 14" Hickory 88' Lt. Sta. 482+85  
 B.M. #34 "Q" Elev. 533.25' Boat Spike in 10" Oak 167' Lt. Sta. 500+79  
 B.M. #35 "Q" Elev. 538.90' Boat Spike in 15" Tulip 63' Rt. Sta. 509+01  
 B.M. #36 "Q" Elev. 546.71' Boat Spike in 14" Oak 79' Rt. Sta. 516+90  
 B.M. #36 "Q" Elev. 546.78' Ahead Boat Spike in 14" Oak 79' Rt. Sta. 516+88





**WARREN & EDITH KOOPMAN**  
 FOR DETAILS OF RAMP EXIT & ENTRANCE WITH U.S. 31 - SEE SHT. NO. 30  
 (N.R.A.) P.O.C. 589+00 (I.R.B.) P.O.C. 589+00 (I.R.B.) P.O.C. 594+58.8 (I.R.B.)  
 (N.R.A.) P.O.C. 595+93.8 (I.R.B.) N.R.A. Line Q = P.O.C. 993+51.2 Line A Proj. FA539

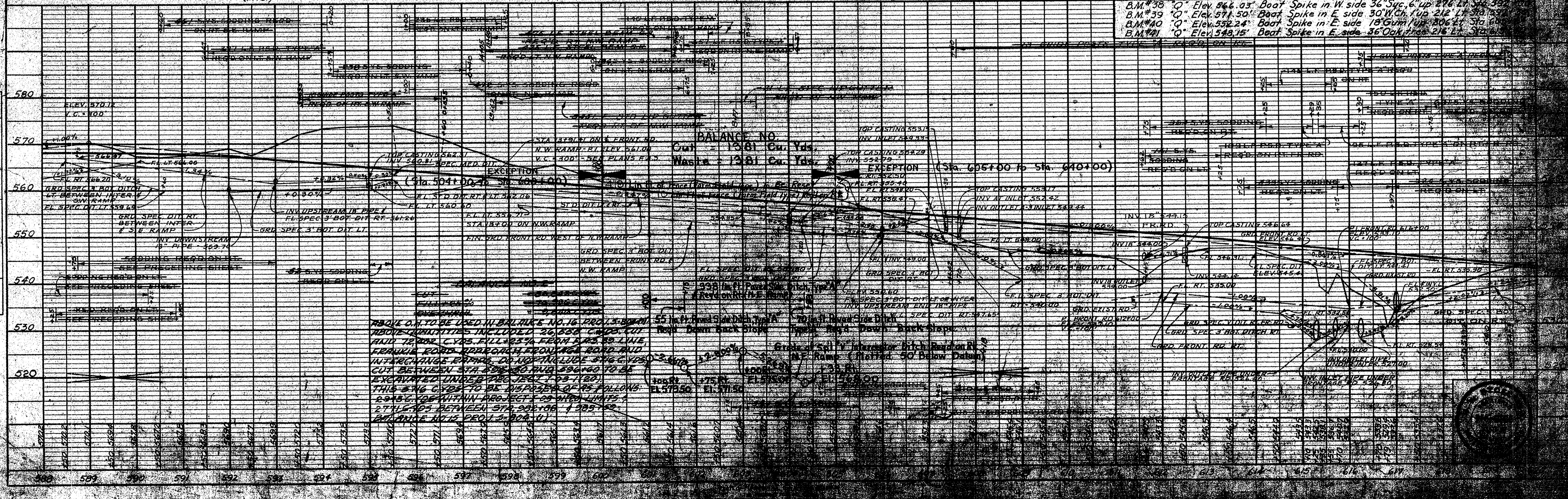
**EMMETT L. MULL (et ux.)**  
 Spec. Lip Gutter See Plan Sheet No. 24

**WARREN & EDITH KOOPMAN**  
 ALL R/W ON THIS SHEET TO BE AS SHOWN (Limited Access) ON RT. STA 600+00 TO 604+75.  
 FOR DETAILS OF RAMP INTERSECTIONS WITH S.R. 160 - SEE SHEET NO. 33 - FOR QUANTITIES SEE SHEET NO. 38

**CARL & MYRTLE ELROD**  
 FOR DETAILS OF RAMP INTERSECTIONS WITH S.R. 160 - SEE SHEET NO. 33 - FOR QUANTITIES SEE SHEET NO. 38

**DONLEY & MELISSIE MULLINS**  
 Sta. 614+00-622+00 on Lt. Drains 115 Ac. C.O.4  
 STRUCTURE NO. 66 234' of 54" Cl. Pipe Road on 30° Skew

**LINNIE B. DIETRICH**  
 Sta. 603+00-614+00 on Lt. Drains 4 Ac. C.O.4  
 STRUCTURE NO. 61 164' of 18" Cl. Pipe Road



DATE 7-2-58  
 DRAWN BY J. L. LANGE  
 CHECKED BY J. L. LANGE  
 SURVEYED BY J. L. LANGE  
 PLANNED BY J. L. LANGE  
 NOTE: BOOK PLANNED CHECKED BY J. L. LANGE  
 NO. 25022 STRUCTURE NO. 24

DATE 7-2-58  
 DRAWN BY J. L. LANGE  
 CHECKED BY J. L. LANGE  
 SURVEYED BY J. L. LANGE  
 PLANNED BY J. L. LANGE  
 NOTE: BOOK PLANNED CHECKED BY J. L. LANGE  
 NO. 25022 STRUCTURE NO. 24

**BALANCE NO. 1381 Cu. Yds. Cut**  
**Waste 1381 Cu. Yds.**  
 EXCEPTION (Sta. 605+00 to Sta. 610+00)  
 ABOVE Q TO BE USED IN BALANCE NO. 16 PRO. 15-B-10  
 ABOVE QUANTITIES INCLUDED 26,388 CU. YDS. CUT  
 HAD 12,000 CU. YDS. FULL 23.7% FROM D.B.S. TO L.V.I.E.  
 FRANKIE ROND BRANCH FROM BRIDGE ROAD AND  
 INTERCHANGE BRANCH DO NOT INCLUDE 3,166 CU. YDS.  
 CUT BETWEEN STA. 595+00 AND 596+00 TO BE  
 EXCAVATED UNDER PROJ. JET 1-03-1180.  
 THIS 3,166 CU. YDS. TO BE DISPOSED OF AS FOLLOWS:  
 2,945 CU. YDS. WITHIN PROJECT - 50' WIDE DITCHES  
 271 CU. YDS. BETWEEN STA. 595+00 & 595+52  
 AND PRICE NOTE PER 1.2, 200' WIDE

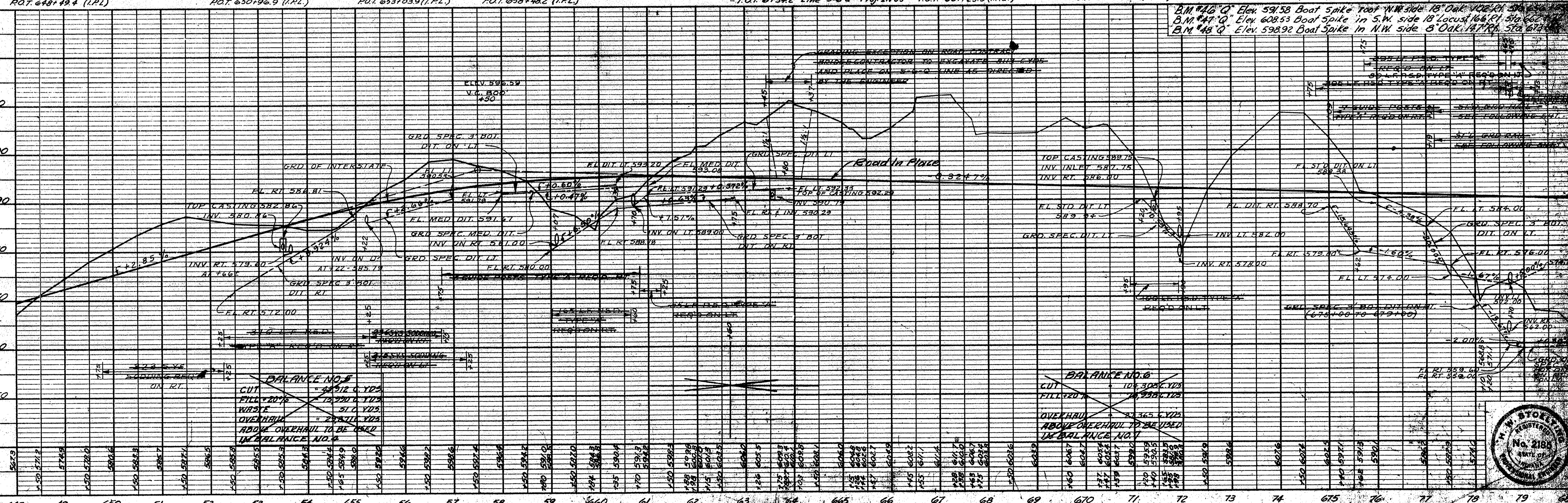
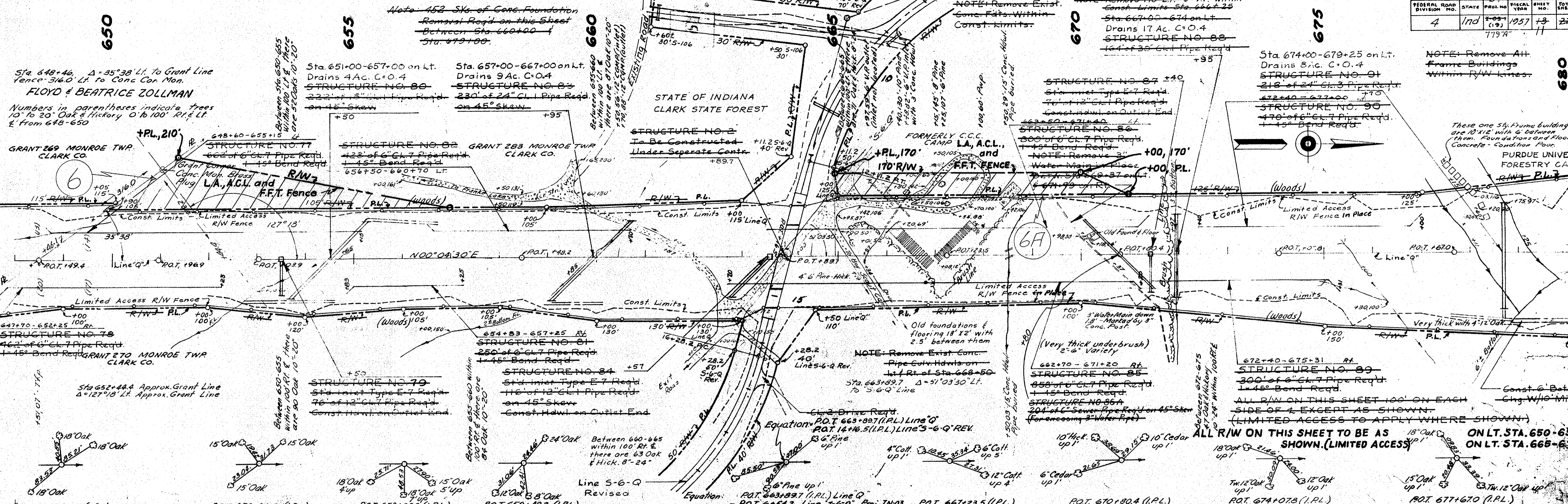
B.M. #38 "Q" Elev. 566.03' Boat Spike in W. side 36" Syc. 6" up 216' Lt. Sta. 587+00  
 B.M. #39 "Q" Elev. 571.50' Boat Spike in E. side 30" W. Ch. 1 up 212' Lt. Sta. 587+00  
 B.M. #40 "Q" Elev. 552.24' Boat Spike in E. side 18" Gum 1 up 206' Lt. Sta. 587+00  
 B.M. #41 "Q" Elev. 548.15' Boat Spike in E. side 36" Oak 1 up 216' Lt. Sta. 587+00



SLIDE ON LEFT

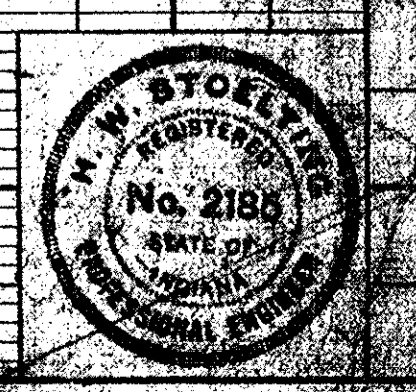
SLIDE ON LEFT

|                           |       |           |             |           |              |
|---------------------------|-------|-----------|-------------|-----------|--------------|
| FEDERAL ROAD DIVISION NO. | STATE | PROJ. NO. | FISCAL YEAR | SHEET NO. | TOTAL SHEETS |
| 4                         | Ind   | 1957      | 19          | 224       |              |



DATE: 9-22-57  
 BY: R.S. JONES  
 CHECKED: R.S. JONES  
 PLAN  
 SURVEYED: 9-22-57  
 ALIGNED: 9-22-57  
 CHECKED: 9-22-57  
 NO. 22422  
 22422

DATE: 9-22-57  
 BY: R.S. JONES  
 CHECKED: R.S. JONES  
 PROFILE  
 SURVEYED: 9-22-57  
 ALIGNED: 9-22-57  
 CHECKED: 9-22-57  
 NO. 22422  
 22422

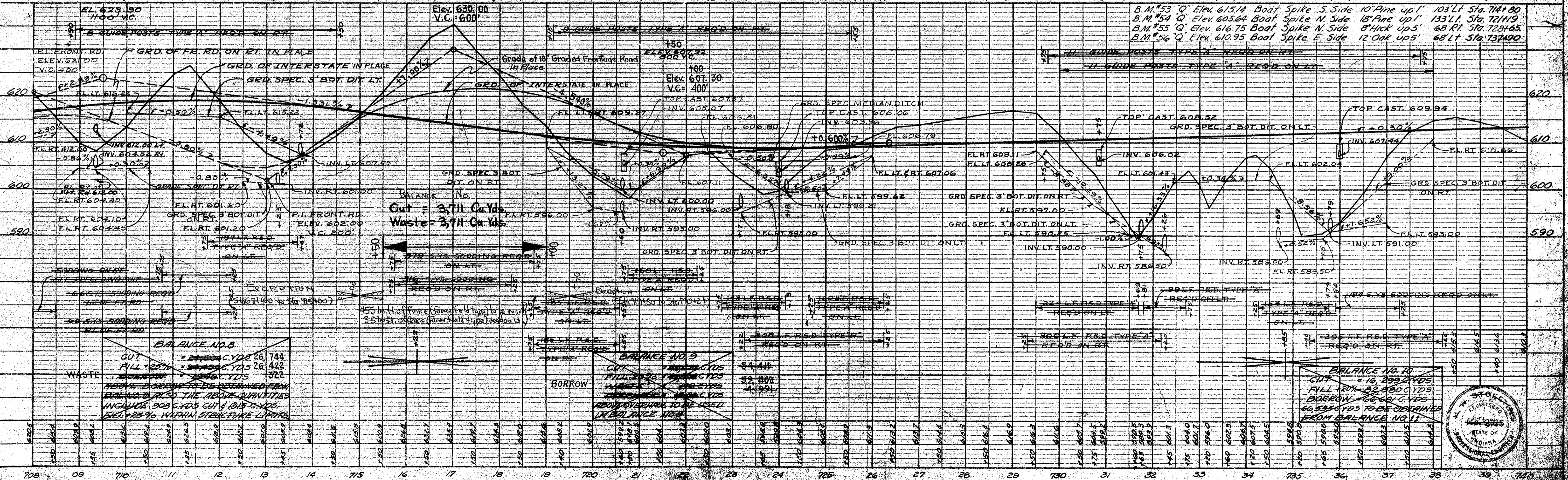
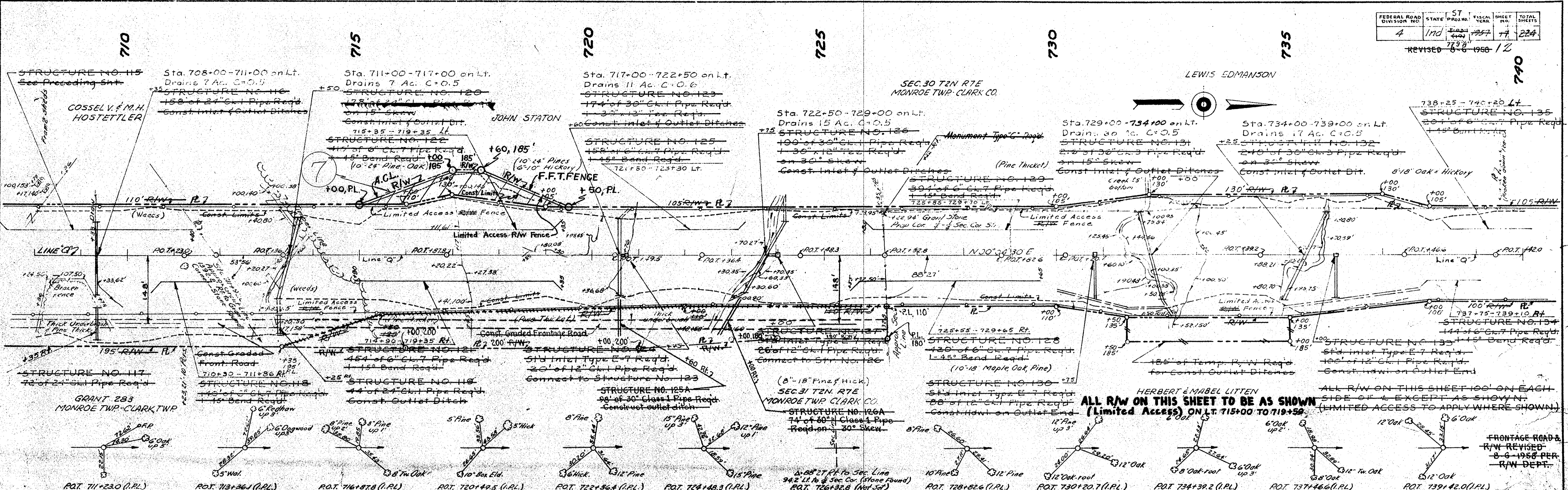




SLIDE ON LEFT

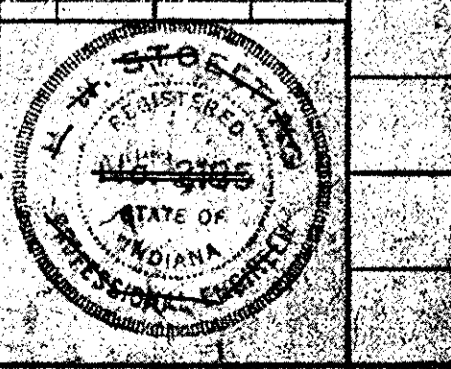
|                           |                   |             |           |              |
|---------------------------|-------------------|-------------|-----------|--------------|
| FEDERAL ROAD DIVISION NO. | STATE PROJECT NO. | FISCAL YEAR | SHEET NO. | TOTAL SHEETS |
| 4                         | 170               | 1957        | 7         | 224          |

REVISED 8-6-1958 PER



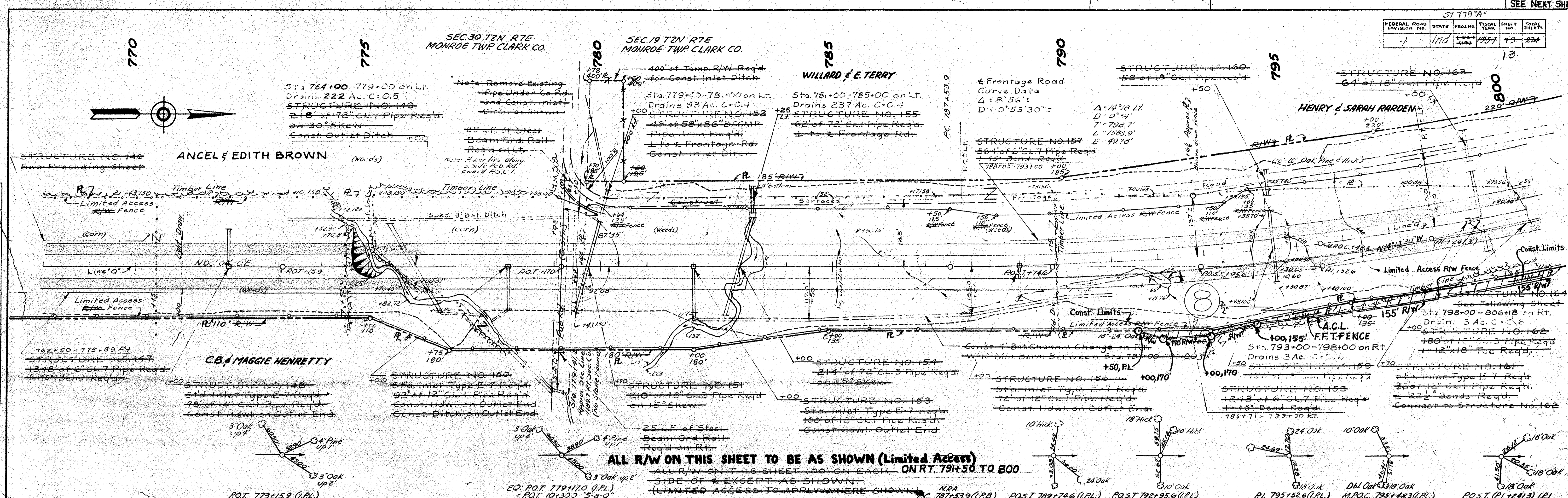
DATE: 8-6-58  
 SURVEYED BY: E.C. STOLTZ  
 GRADES CHECKED BY: E.C. STOLTZ  
 PLAN CHECKED BY: E.C. STOLTZ  
 NOTE BOOK NO. 2627  
 NO. 2627  
 STRUCTURE NOTATION CHKD

DATE: 8-6-58  
 SURVEYED BY: E.C. STOLTZ  
 GRADES CHECKED BY: E.C. STOLTZ  
 PLAN CHECKED BY: E.C. STOLTZ  
 NOTE BOOK NO. 2627  
 NO. 2627  
 STRUCTURE NOTATION CHKD

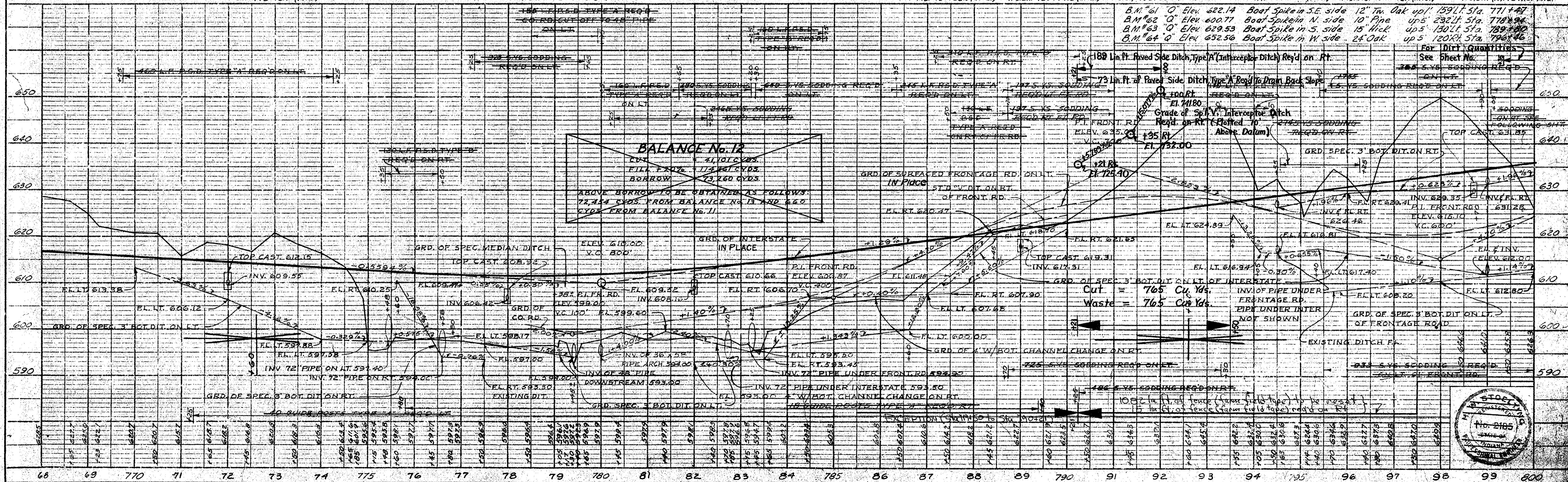




|         |  |                           |       |         |             |           |              |
|---------|--|---------------------------|-------|---------|-------------|-----------|--------------|
| 57779'A |  | FEDERAL ROAD DIVISION NO. | STATE | PROJECT | FISCAL YEAR | SHEET NO. | TOTAL SHEETS |
|         |  | 4                         | MO    | 1957    | 43          | 224       |              |

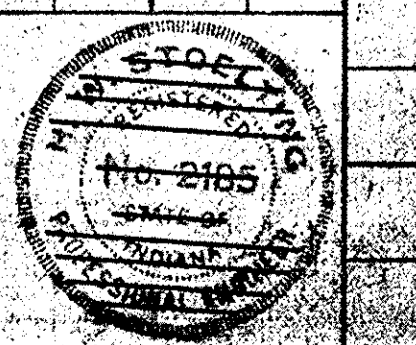


**ALL R/W ON THIS SHEET TO BE AS SHOWN (Limited Access)**  
 ALL R/W ON THIS SHEET 100' ON EACH ON RT. 791+50 TO 800  
 SIDE OF & EXCEPT AS SHOWN  
 (LIMITED ACCESS TO APPLY WHERE SHOWN)



DATE: 12/15/57  
 SURVEYED BY: E. J. WILSON  
 CHECKED BY: E. J. WILSON  
 NOTE BOOK NO. 2622  
 RT. OF WAY CHECKED BY: E. J. WILSON

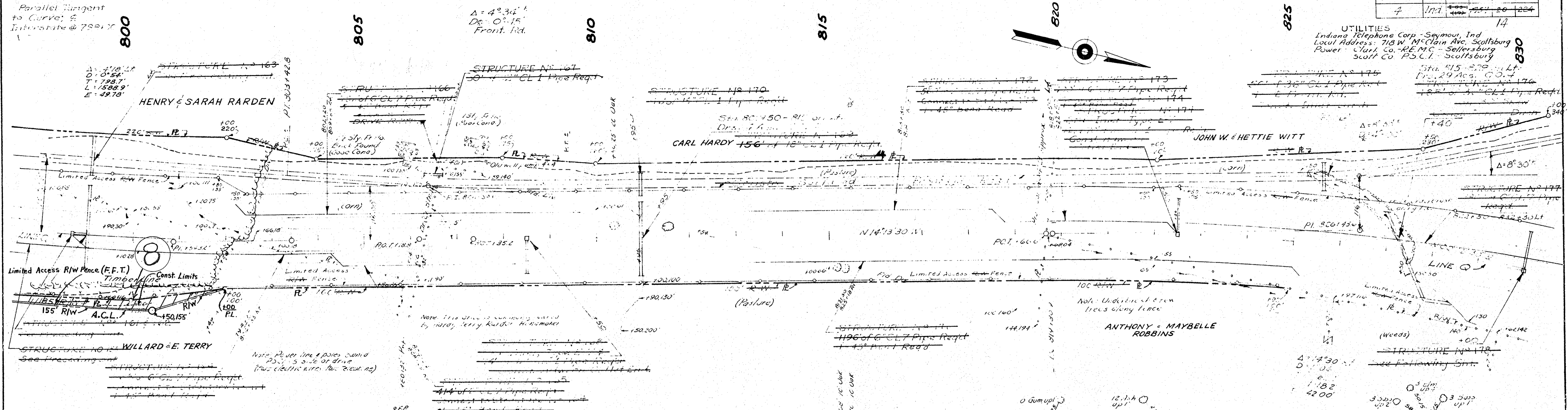
DATE: 12/15/57  
 SURVEYED BY: E. J. WILSON  
 CHECKED BY: E. J. WILSON  
 NOTE BOOK NO. 2622  
 STRUCTURE NOTATION CHECKED BY: E. J. WILSON





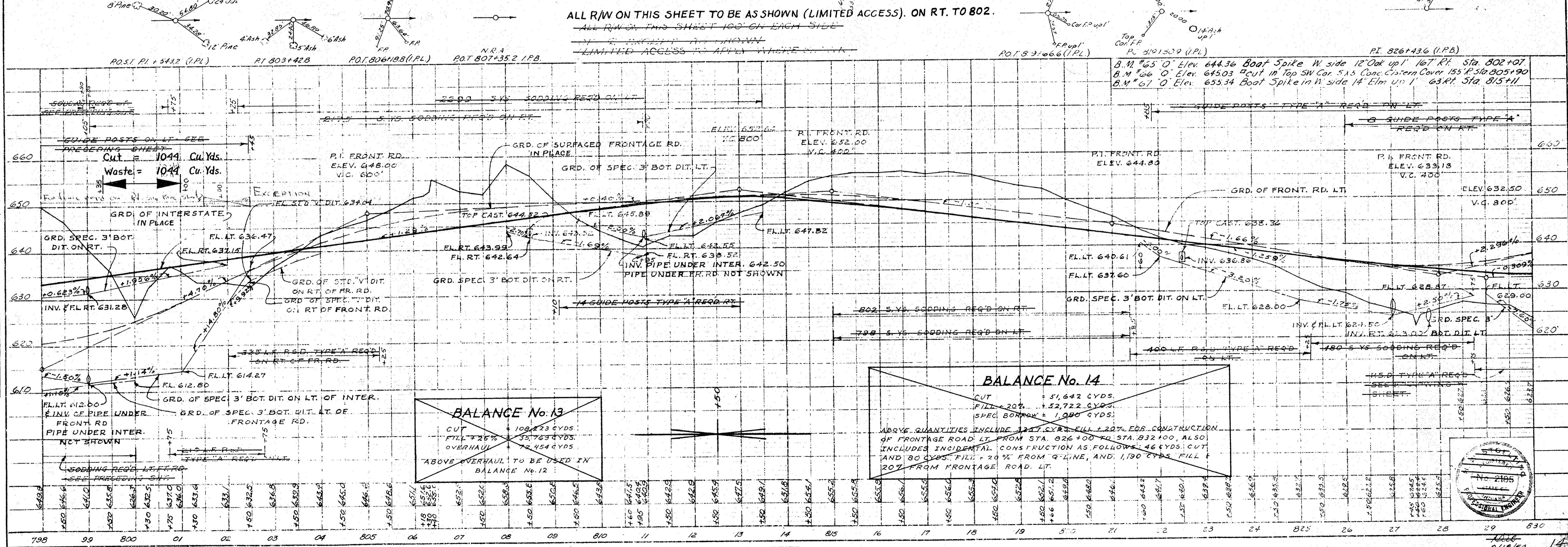
SLIDE ON RIGHT  
SEE PRECEDING SHEET

| FEDERAL ROAD DIVISION NO. | STATE | PROJ. NO. | FISCAL YEAR | SHEET NO. | TOTAL SHEETS |
|---------------------------|-------|-----------|-------------|-----------|--------------|
| 7                         | IND.  | 14        | 1957        | 26        | 284          |



ALL R/W ON THIS SHEET TO BE AS SHOWN (LIMITED ACCESS). ON RT. TO 802.

ALL R/W ON THIS SHEET 100' ON EACH SIDE  
LIMITED ACCESS TO APPLY WHERE SHOWN



DATE: 1/25/57  
BY: R. G. Shantz  
CHECKED: R. G. Shantz  
NOTE: BOX GRADINGS CHECKED  
NO. 7621, STRUCTURE NOTATION CHD.

DATE: 1/25/57  
BY: R. G. Shantz  
CHECKED: R. G. Shantz  
NOTE: BOX GRADINGS CHECKED  
NO. 7621, STRUCTURE NOTATION CHD.

