

UTILITY OWNERS

Indiana & Michigan Electric Company 2101 Spy Run Avenue Fort Wayne, Indiana 46801 United R.E.M.C. PO Box 733 Huntington, Indiana 46750
Indiana Bell Telephone Company 3638 North Rural Street Indianapolis, Indiana 46205 Mississippi Telephone Corporation PO Box 200 Ossian, Indiana
Tri-State Pipe-Line Company 4133 New Haven Road Fort Wayne, Indiana

NOTES
 1. Cross-hatched area indicates 5' x 5' Sys. of Slope-wall Includes 3' Sys. as Toe-wall and Special Concrete Curb equivalent.
 2. Remove concrete box, hdwl. & retaining wall. Cost of this shall be included in cost of other items.
 3. EGN: P.O.T. Sta. 844+70.88 "PR-1" = P.O.T. Sta. 0+00.00 "11/16" = P.O.T. Sta. 12+73.01 "1/2R"
 4. EGN: P.O.T. Sta. 847+20.88 "PR-1" = P.O.T. Sta. 15+06.47 "SHR" = P.O.T. Sta. 0+00.00 "SER"
 5. EGN: P.O.T. Sta. 842+00.00 "PI" = P.O.T. Sta. 399+88.62 "A" = P.O.T. Sta. 42+00 "Rt. to A"
 6. EGN: P.O.T. Sta. 829+70.88 "PR-1" = P.O.T. Sta. 15+06.47 "SHR" = P.O.T. Sta. 0+00.00 "SER"

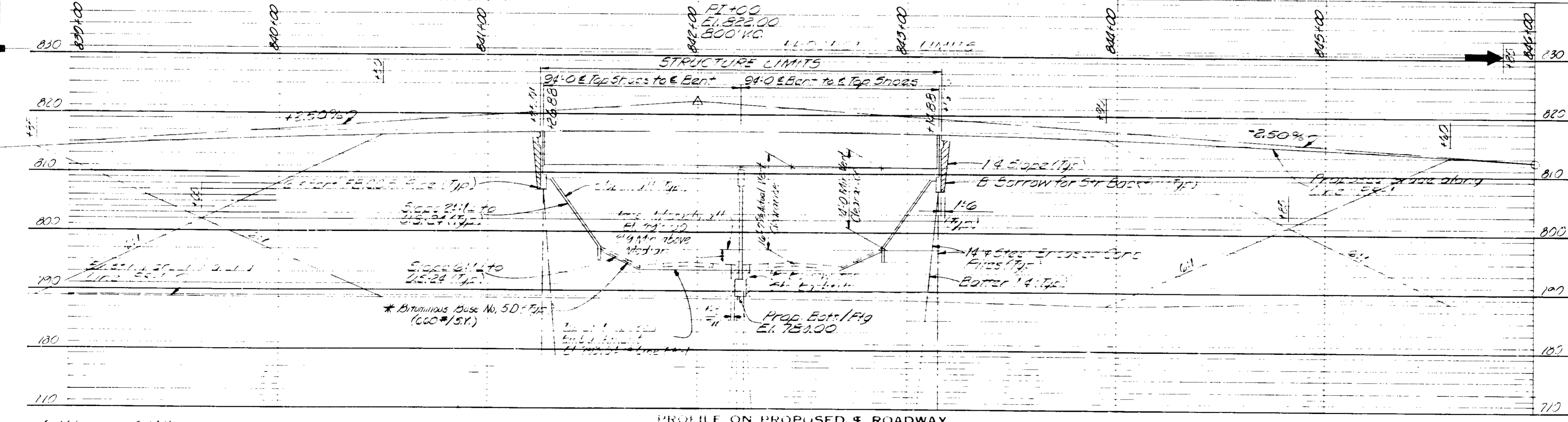
All R/W References to Line A in notes.

SITUATION PLAN

EASTMAN

PLAN	34000 CYS
Excavation	0 CYS
Fill	34000 CYS
Total	34000 CYS

* Indicates items not shown in the notes.



PROFILE ON PROPOSED E ROADWAY

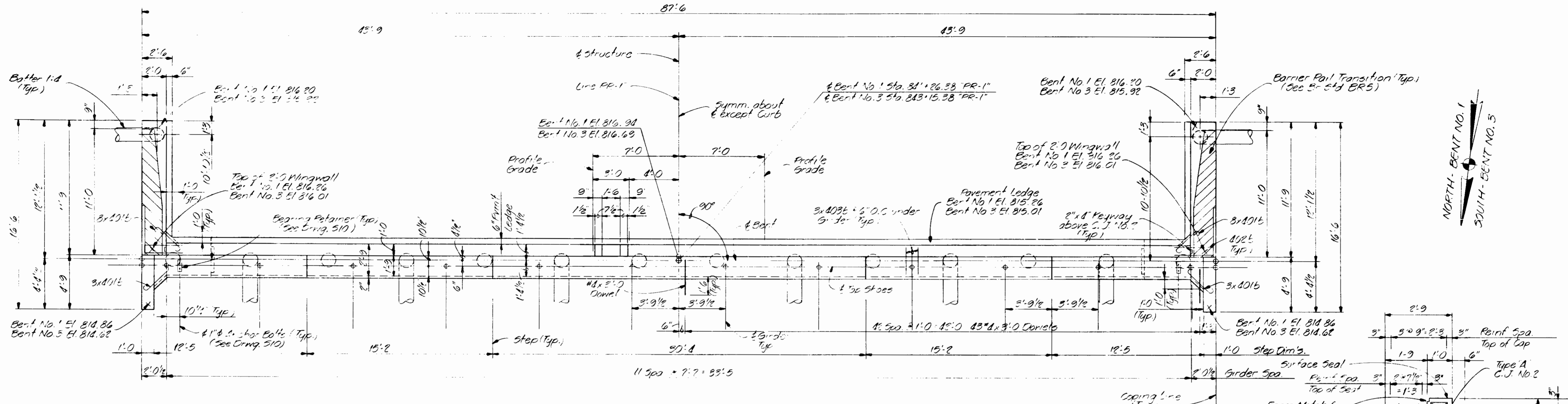
LAYOUT
 COMPOSITE E. TUB PLATE GIRDER BRIDGE
 37'-3" x 8'-0" SQUARE CLEAR ROADWAY SPAN
 ON 5'-0" OVER 45'-0"

INDIANA DEPARTMENT OF HIGHWAYS

ALLEN COUNTY
 SCALE: AS NOTED DATE: MARCH 9, 1985
 SUBMITTED FOR APPROVAL: *Leuit Smith*
 DRAWING: 3' OF 11 SHEET: 7 OF 11
 PROJECT: F-170-1(2) STATION: 342+25.50
 BRIDGE CONTRACT NO. 117-1-3
 BRIDGE FILE: 117-1-3

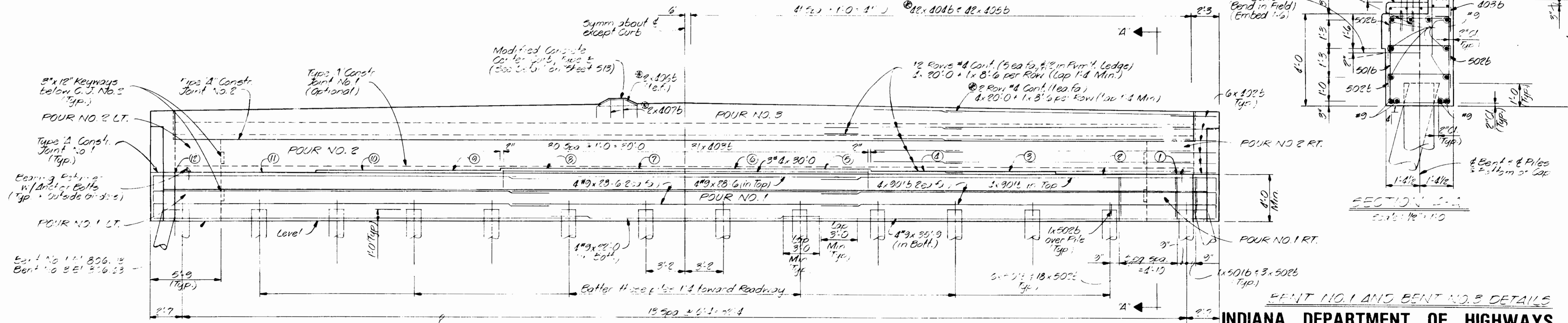
NOTE: FIELD NOTES, BOOK 100807

Revised 12-15-87 Actual Vertical Clearance, Earthwork Quantities, Pipe Lengths & Approach Slabs



PLAN
Scale: 1/4" = 1'-0"

SEAT ELEVATIONS						
Order No.	(2) and (1)	(1) and (2)	(3) and (4)	(4) and (3)	(5) and (6)	(6) and (5)
Bent No. 1	810.925	811.160	811.400	811.160	810.925	810.925
Bent No. 3	810.680	810.915	811.150	810.915	810.680	810.680



ELEVATION
Scale: 1/4" = 1'-0"

INDIANA DEPARTMENT OF HIGHWAYS
ALLEN COUNTY

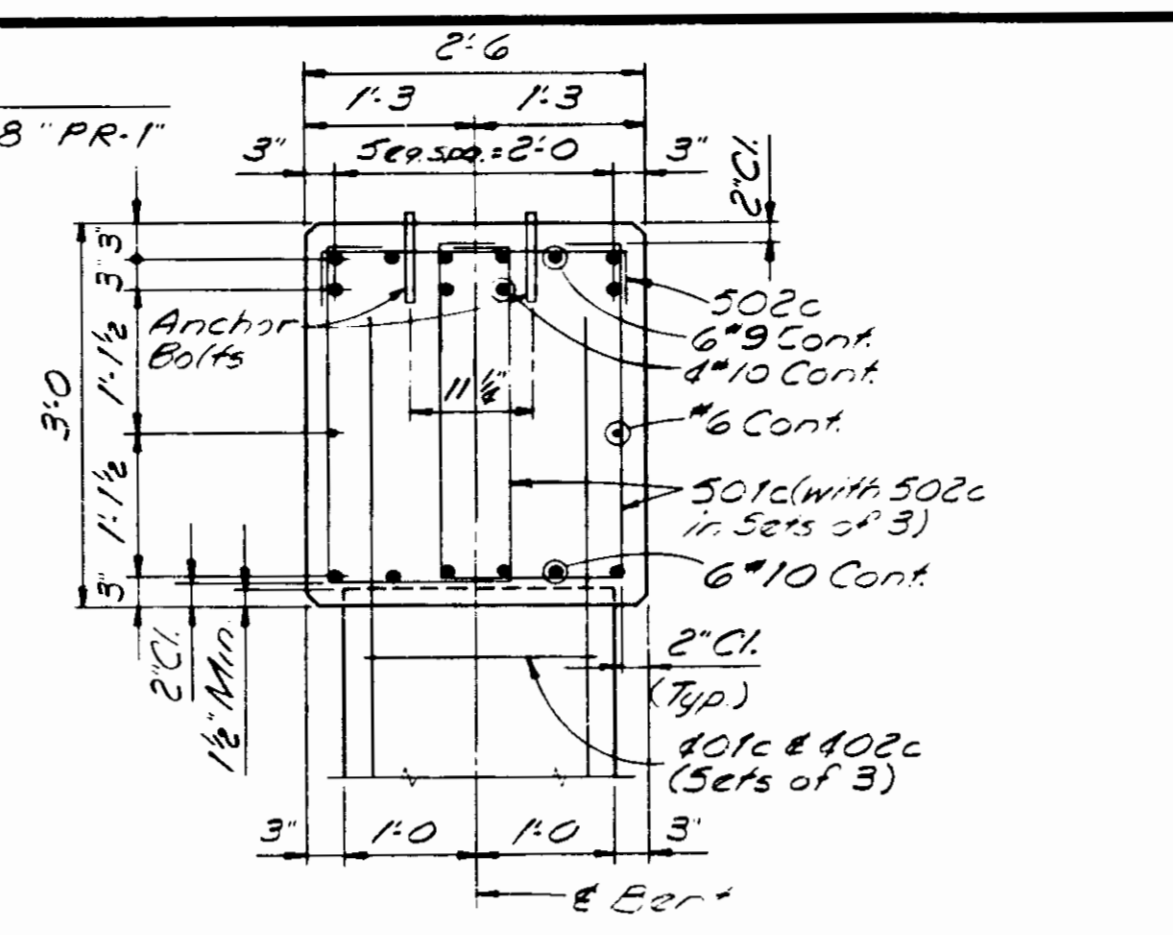
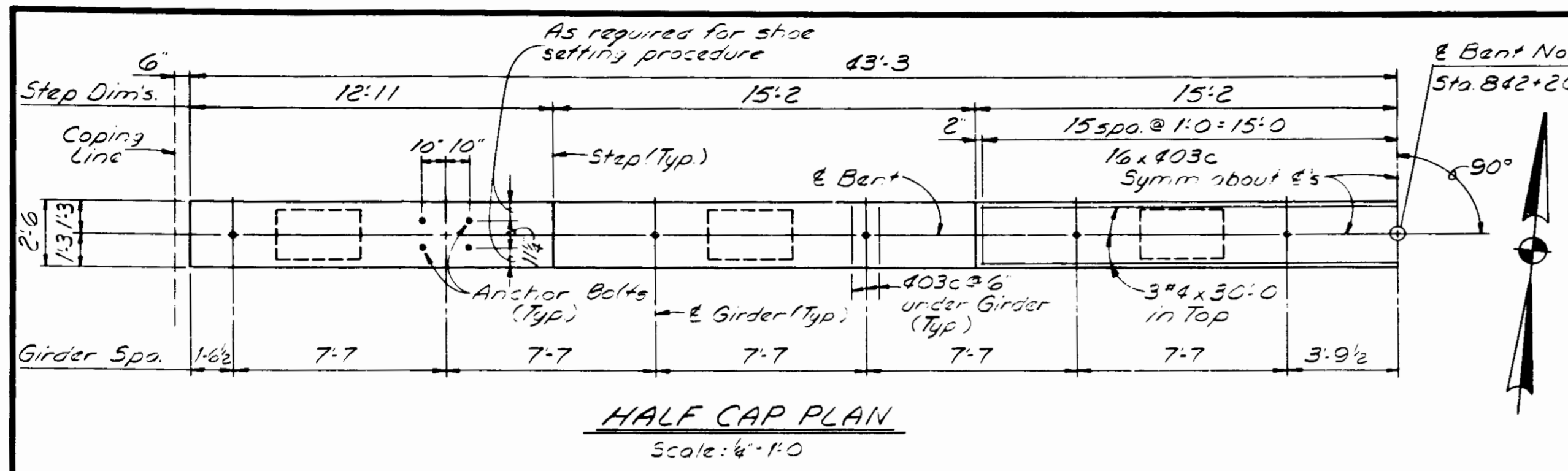
SCALE: 1/4" = 1'-0" DATE: March 5, 1955
SUBMITTED FOR APPROVAL: Robert F. ...

DRAWING: 55 OF 15 SHEET: 11 OF 31
PROJECT: 1-170-1-12
CONTRACT NO. 1-170-1-12
BRIDGE FILE: 1-01-1-12

DESIGNED: P. J. ...
DRAWN: ...
CHECKED: ...

See Drawing 54 for General Notes
See Drawing 56 for Reinforcement Details and List of Materials
See Drawing 511 for Concrete Details

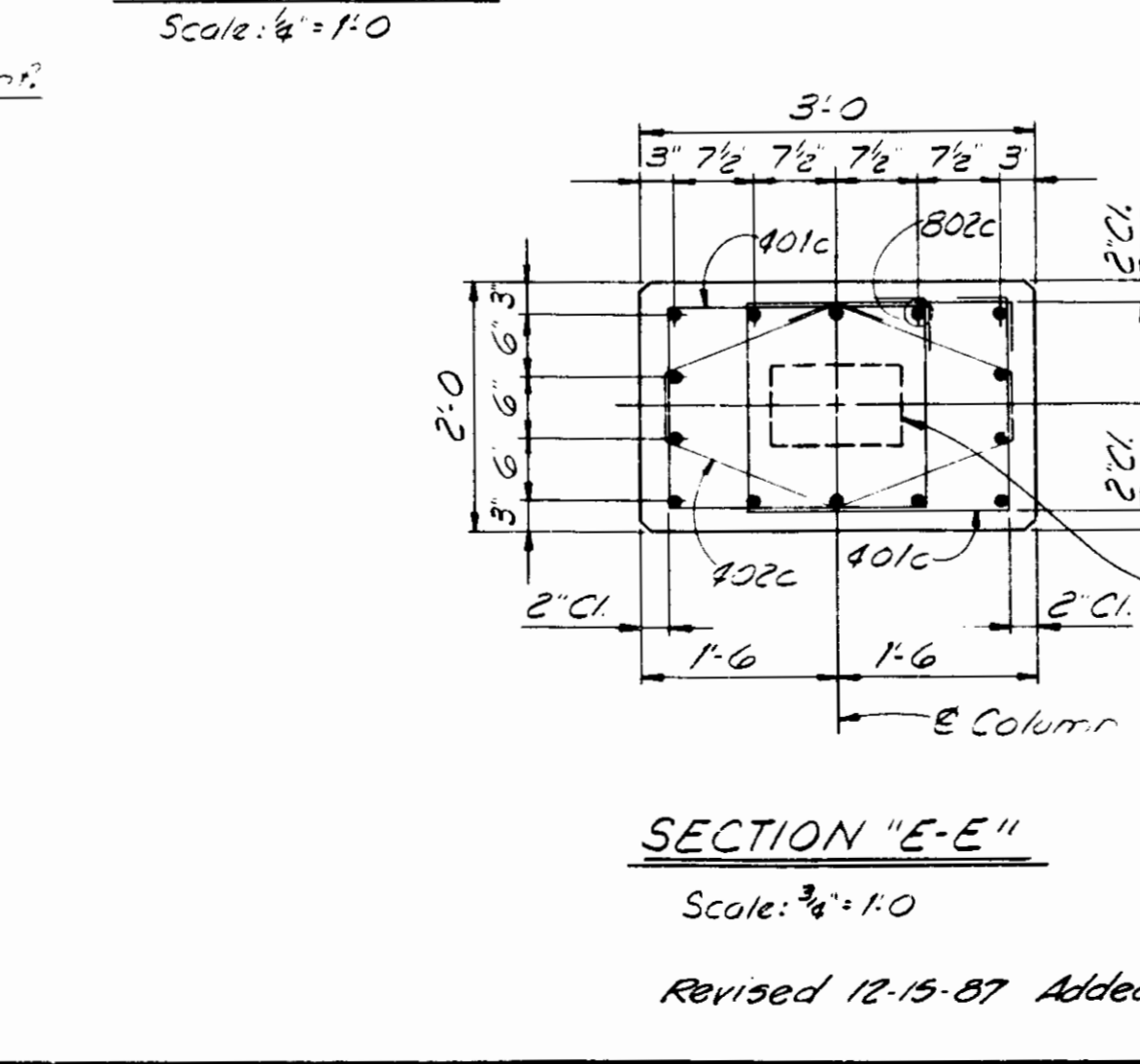
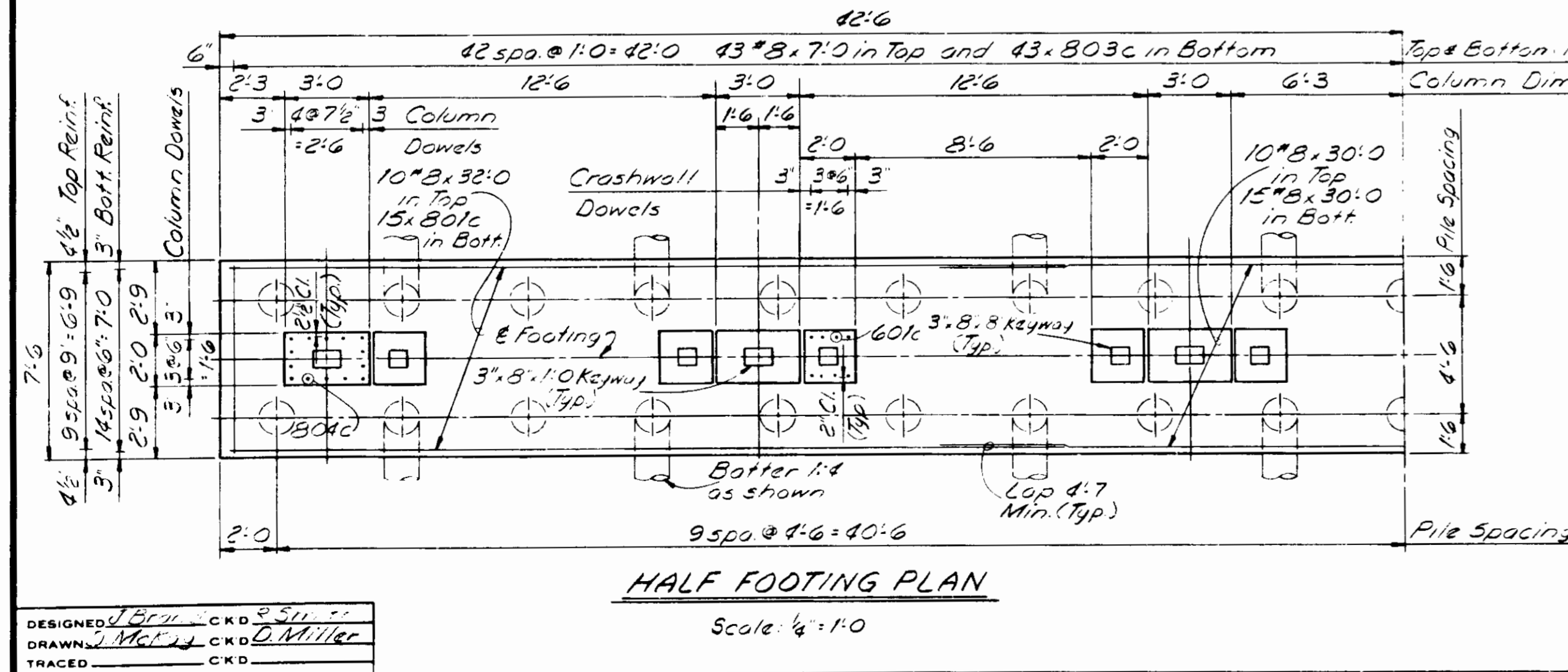
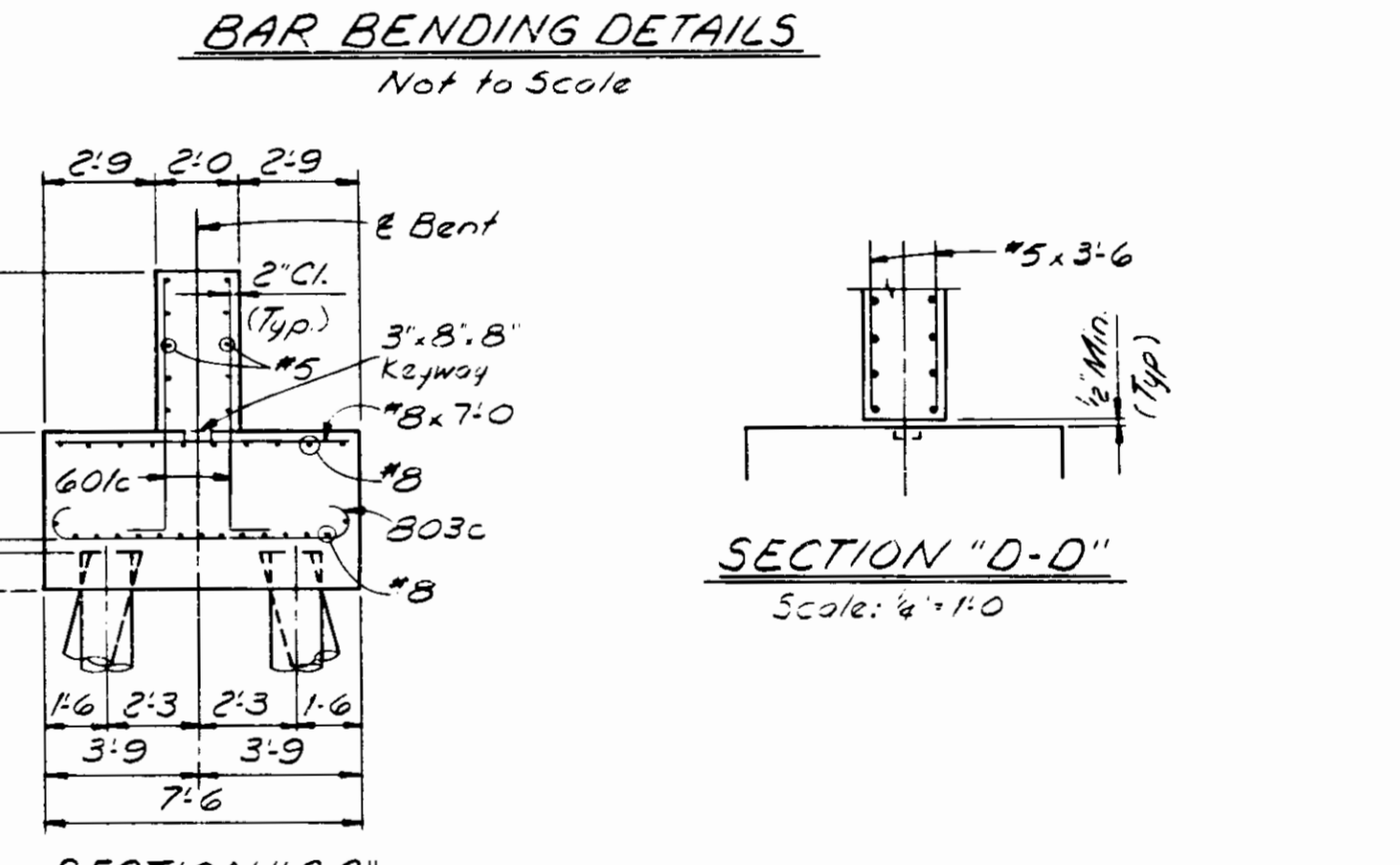
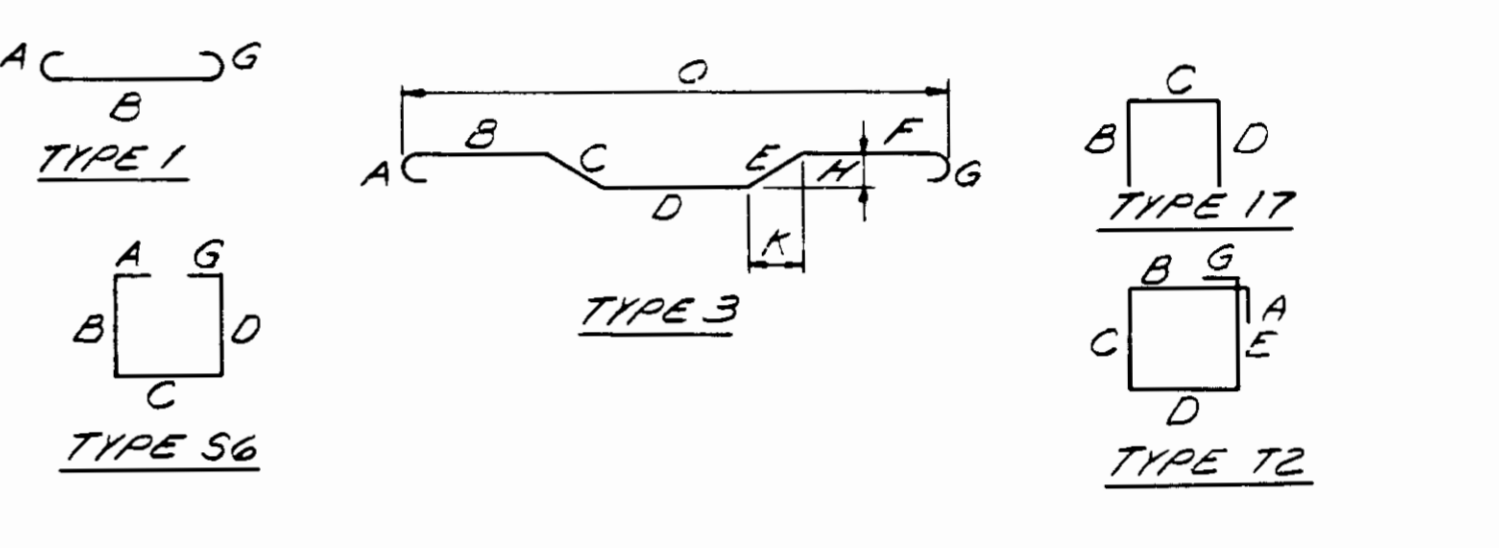
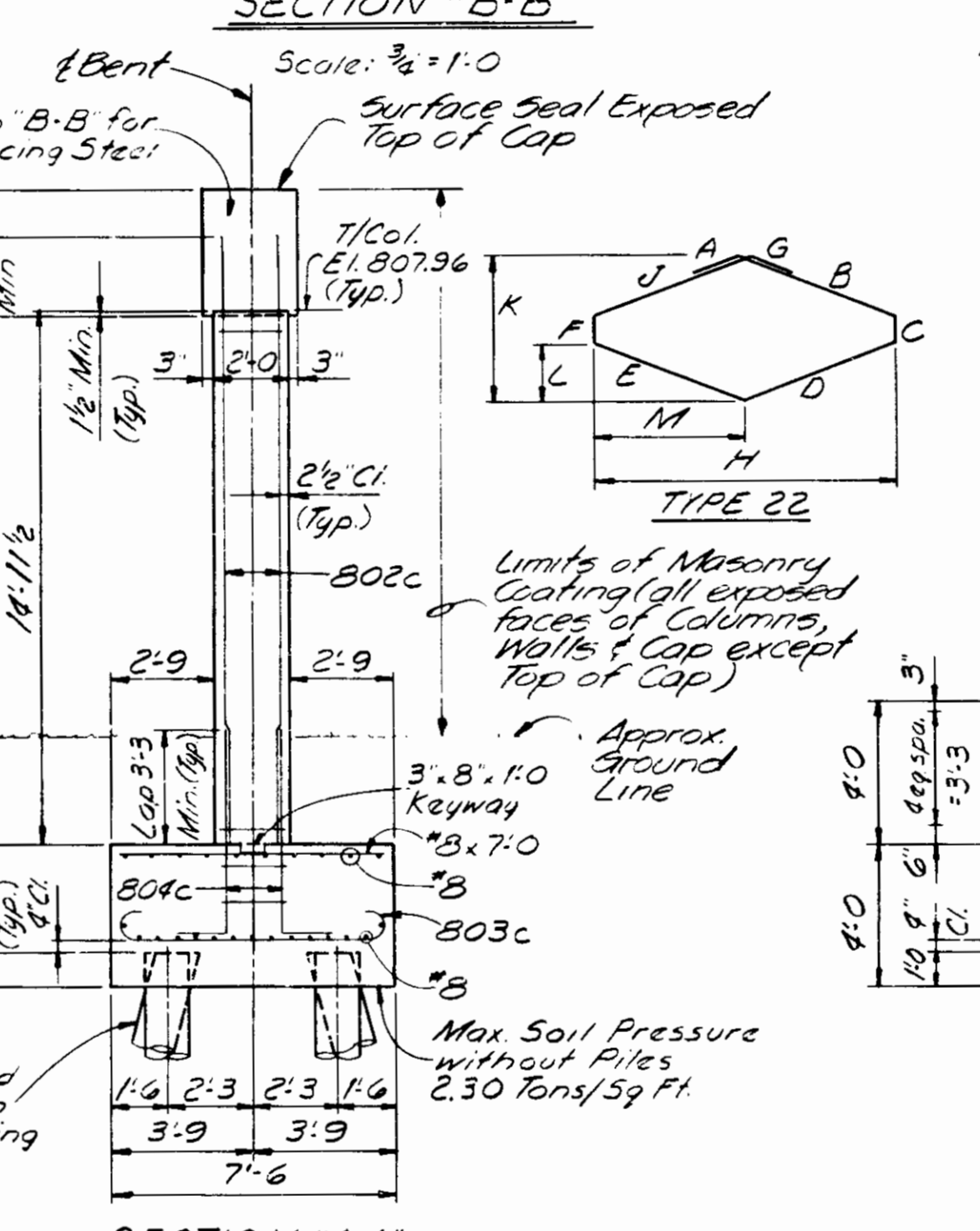
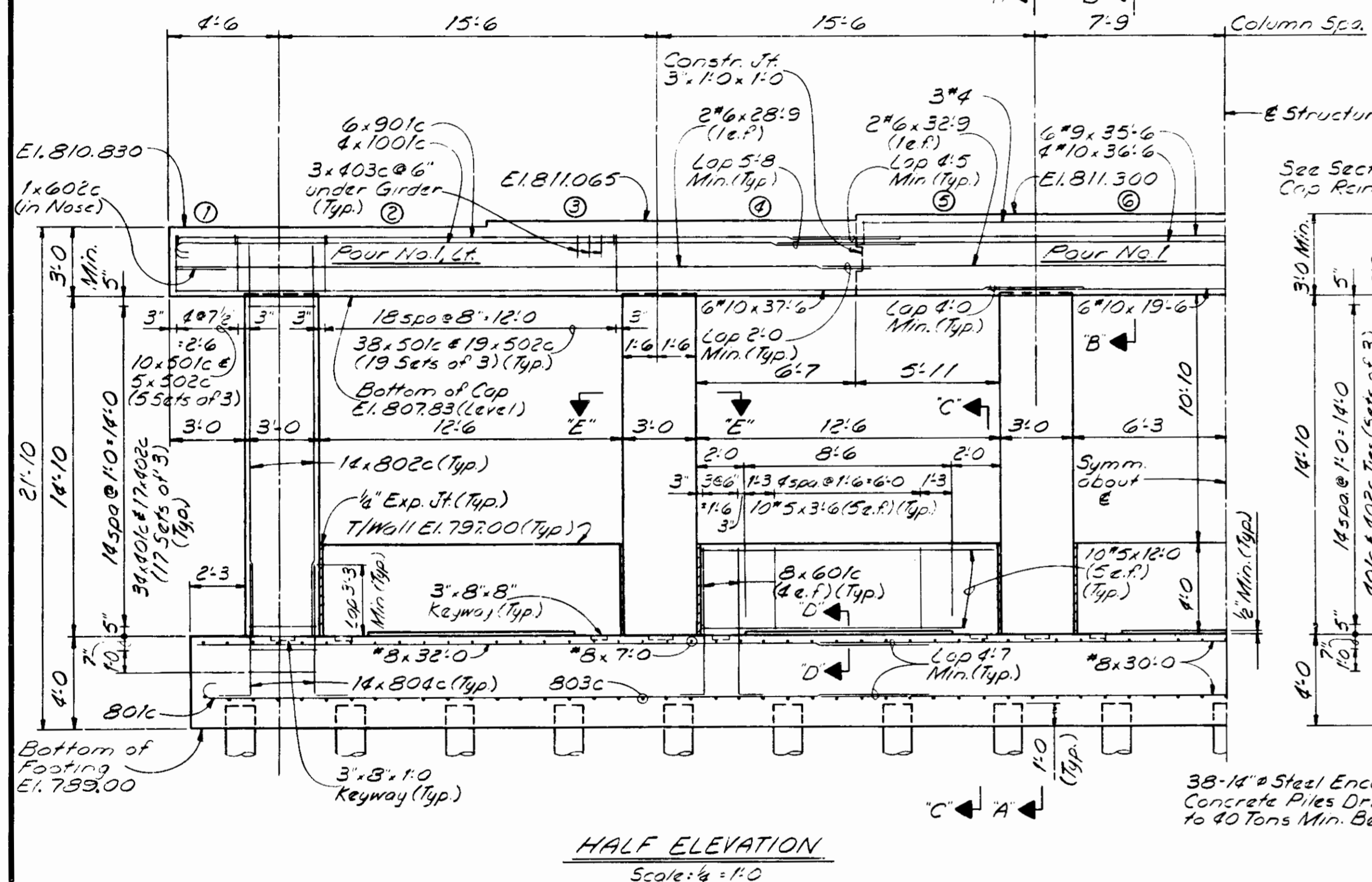
As an alternative to precast concrete piles may be used in place of steel pipe piles when approved by the Engineer. See Drawing 511 for details. Modified concrete joint No. 2 shall be covered with concrete in plan view.



Mark	Length	Type	A	B	C	D	E	F	G	H	J	K	L	M
100lc	31:11	1	1:5	30:6										
90lc	31:0	1	1:3	29:9										
80lc	32:9	1	1:1	31:0										
802c	17:2	3		12:7	1:1	3:6				2'		1:0		
803c	8:10	1	1:1	7:0						11"				
804c	7:3	17		5:11	1:4									
60lc	7:6	17		6:6	1:0									
602c	6:0	17		2:0	2:0	2:0								
50lc	7:9	56	6'	2:8	1:5	2:8			6'					
502c	3:2	17		6	2:2	6'								
40lc	8:3	72	4 1/2"	2:1	1:8	2:1	1:8		4 1/2"					
402c	7:9	22	4 1/2"	1:5	8'	1:5	1:5	8'	4 1/2"	2:8	1:5	1:8	6'	1:4
403c	4:2	17		1:0	2:2	1:0								

BILL OF MATERIALS
BENT NO.2

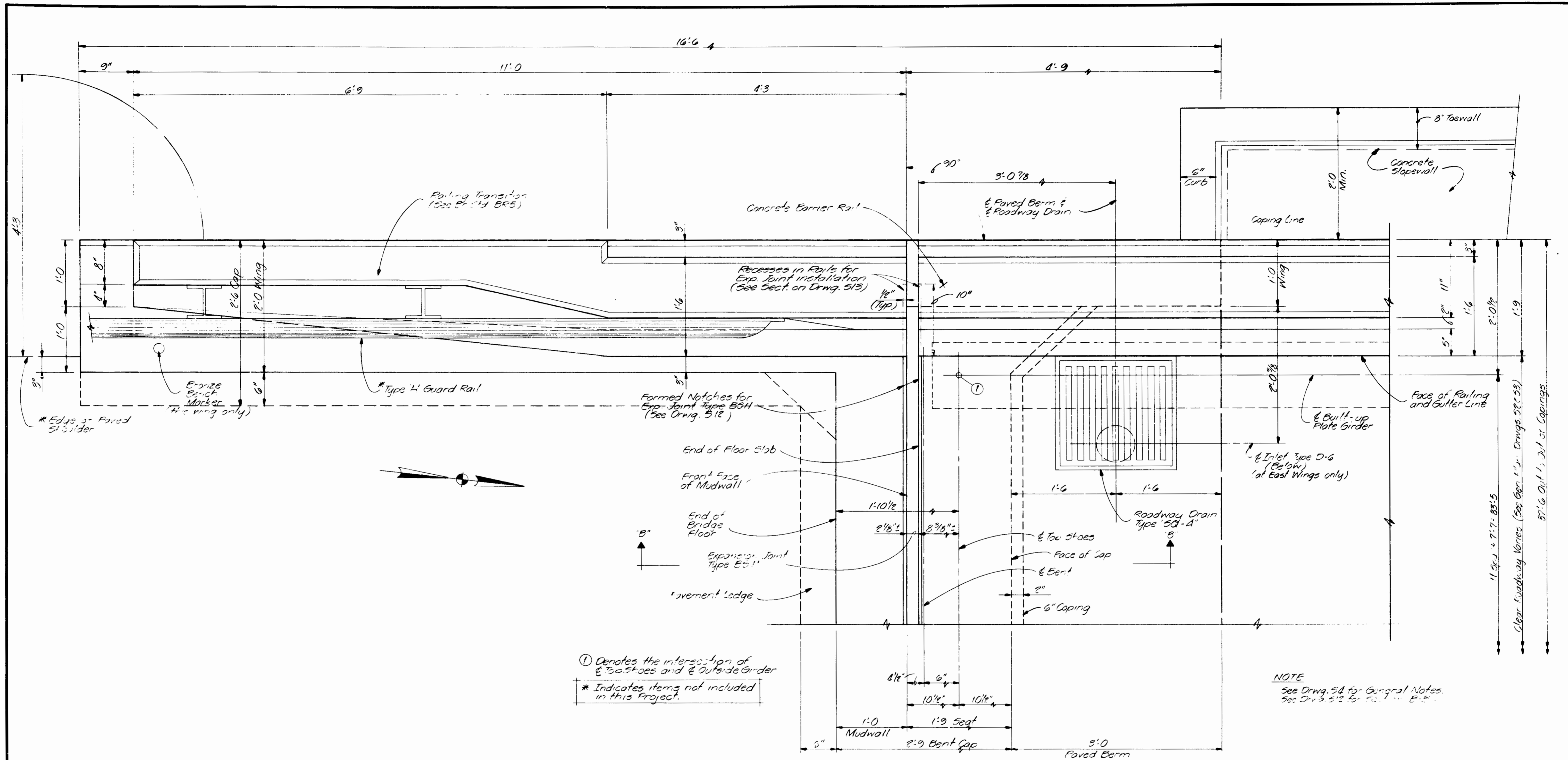
Mark or Size	No. of Bars	Length (Ft.)	Weight (Lbs.)
100lc	8	31:11	
#10	12	37:6	
#10	4	36:6	
#10	6	19:6	
Total #10			4167
90lc	12	31:0	
#9	6	35:6	
Total #9			1989
80lc	30	32:9	
802c	84	17:2	
803c	85	8:10	
804c	84	7:3	
#8	20	32:0	
#8	25	30:0	
#8	85	7:0	
Total #8			15404
60lc	80	7:6	
602c	2	6:0	
#6	2	32:9	
#6	4	28:9	
Total #6			1190
50lc	210	7:9	
502c	105	3:2	
#5	50	12:0	
#5	50	3:6	
Total #5			2853
40lc	204	8:3	
402c	102	7:9	
403c	67	4:2	
#4	3	30:0	
Total #4			1899
Total Steel			27502



NOTES
See Drwg. 54 for General Notes.
72 hours shall elapse after completing Cap Pour No.1 before making pours No.1 Left and No.1 Right.
See Drwg. 510 for Anchor Bolt Details.
Holes for Anchor Bolts may be cored or drilled.
Dimensions shown are for locating core notes.
Anchor Bolts shall be set in non-shrinking grout.
See Bridge Standards C1 for Reinforcing Bar Notes.
As an alternate, prestressed concrete piles may be used in place of steel encased concrete piles. See Bridge Standards C4.

BENT NO.2 DETAILS
INDIANA DEPARTMENT OF HIGHWAYS
ALLEN COUNTY

SCALE: AS NOTED DATE: MARCH 6, 1985
SUBMITTED FOR APPROVAL: [Signature]
DRAWING 57 OF 15 SHEET 13 OF 51
PROJECT: F-170-112
BRIDGE CONTRACT NO. R-112-83
BRIDGE FILE: 1-02-6950



PLAN
 (SOUTHWEST CORNER SHOWN)
 (OTHER CORNERS SIMILAR)
 Scale: 1/2" = 1'-0"

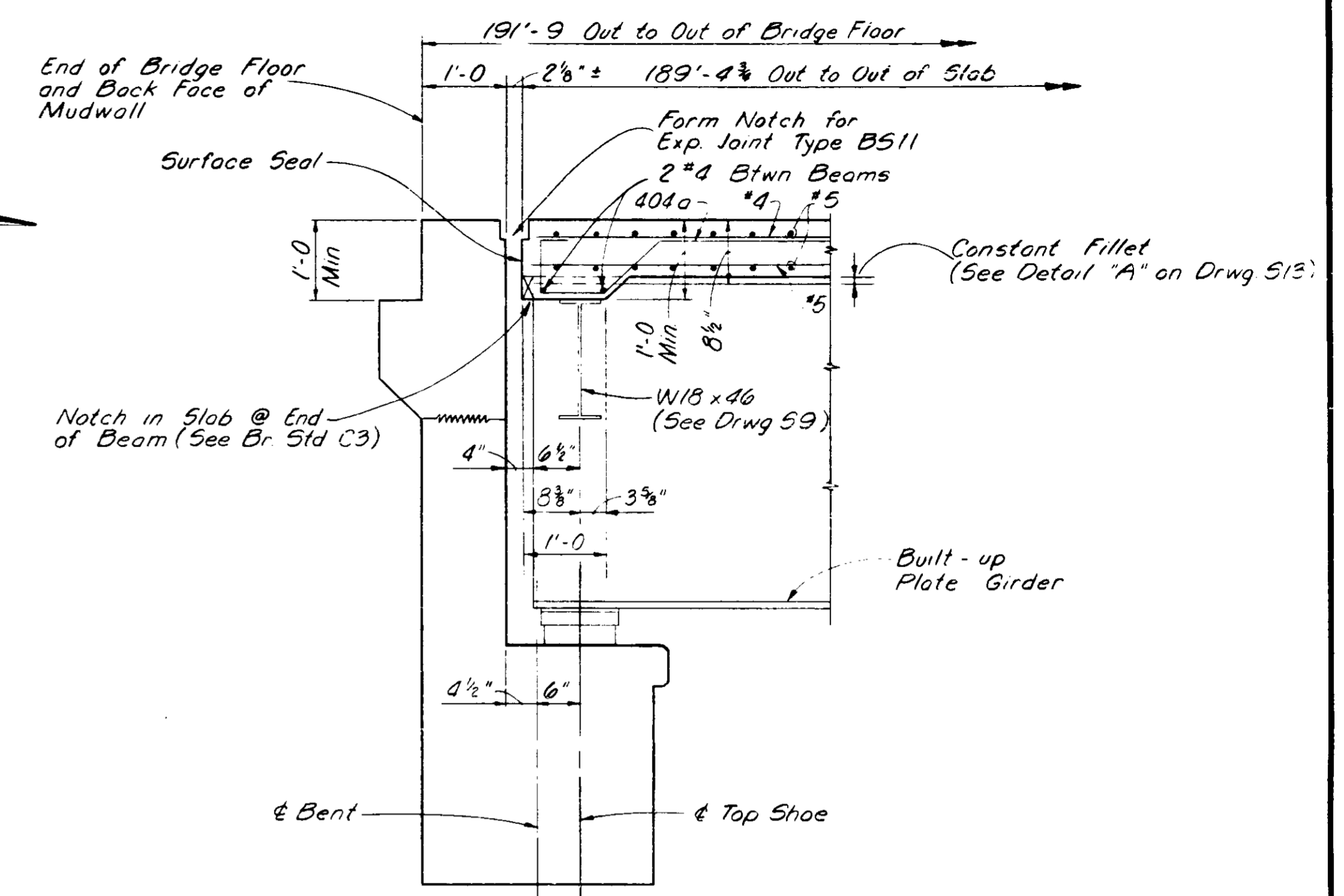
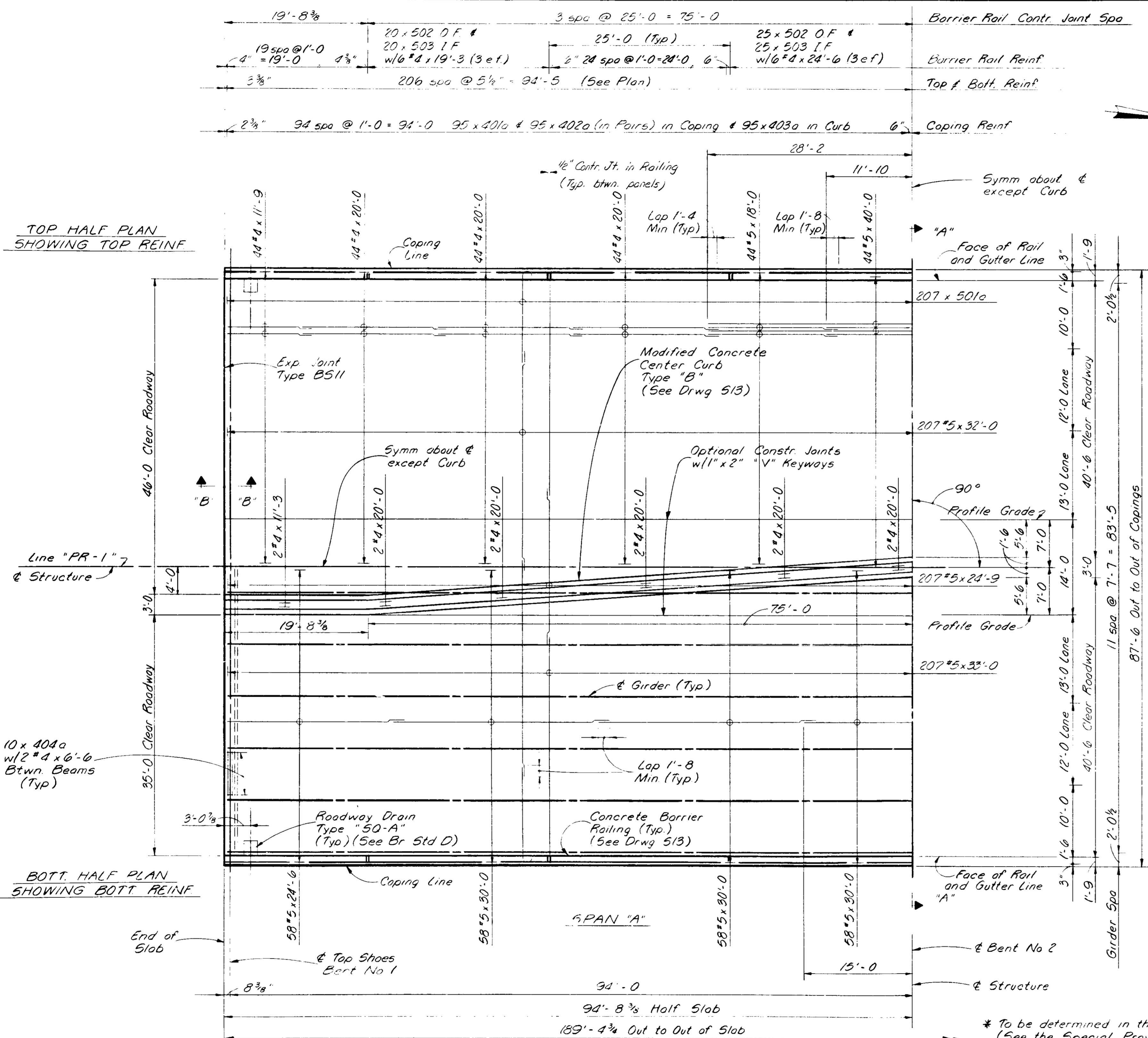
CORNER DETAIL
INDIANA DEPARTMENT OF HIGHWAYS
 ALLEN COUNTY

SCALE: AS NOTED DATE: MARCH 5, 1985
 SUBMITTED FOR APPROVAL: Robert L. Smith

DRAWING: 511 OF 15 SHEET: 17 OF 51
 PROJECT: 4-170-1-2
 CONTRACT NO. R-17483
 BRIDGE FILE: 1-02-592

Revised 12-15-87 Shoulder Dimension, Added Recess Note at Joint and Slapewall Curb Dimensions

DESIGNED	J. E. Reid, CKD	REVISION	
DRAWN	T. E. Smith, CKD	DATE	6/11/85
THAWED	CKD		

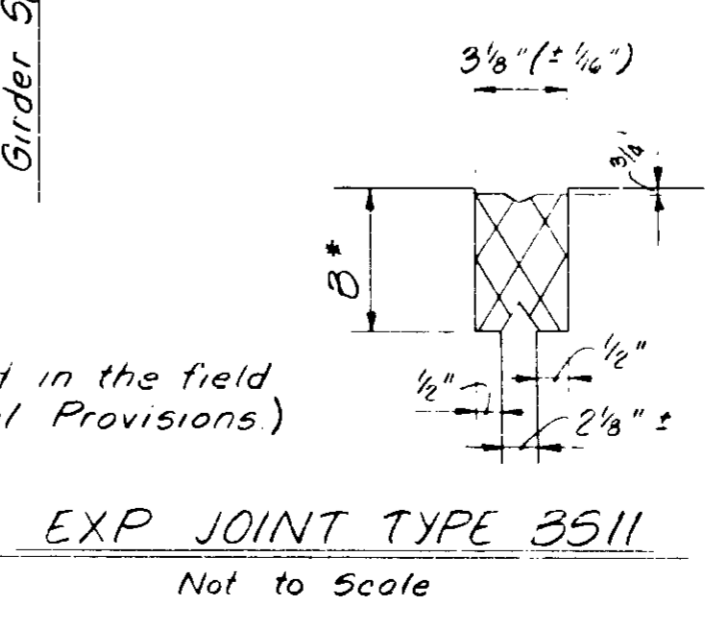


Note: Top of Jacking Frame to be set to maintain a minimum slab depth of 1'-0" Upper portion of Mudwall to be poured with or after the Floor Slab.

SECTION "B-B"
Scale 3/4" = 1'-0"

Notes:
 After Structural Steel has been erected, concrete forms shall not be blocked against the expansion end of steel in making any pours adjacent to steel spans.
 The Top reinforcing in the slab shall be securely tied down to slab forms and/or the Girders to prevent lifting during concrete placement.
 The Contractor will have the option of using permanent metal forms for the concrete bridge deck in lieu of removal forms in this Contract. See Special Provisions.
 Surface Seal the Bridge Deck, Center Curb and Barrier Railings as shown.
 All Reinforcing Steel in the Floor Slab, Center Curb and Barrier Railings shall be Epoxy Coated.

NOTES See Drwg 54 for General Notes.
 See Drwg 511 for Corner Details.
 See Drwg 513 for Section 'A-A', Sequence of Pours, Bar Bending Details and Bill of Materials.
 See Drwgs 515 & 516 for Screed Elevations.
 See Bridge Standard C1 for Reinforcing Bar Notes.



EXP JOINT TYPE 3511
Not to Scale

FLOOR DETAILS
 INDIANA DEPARTMENT OF HIGHWAYS
 ALLEN COUNTY

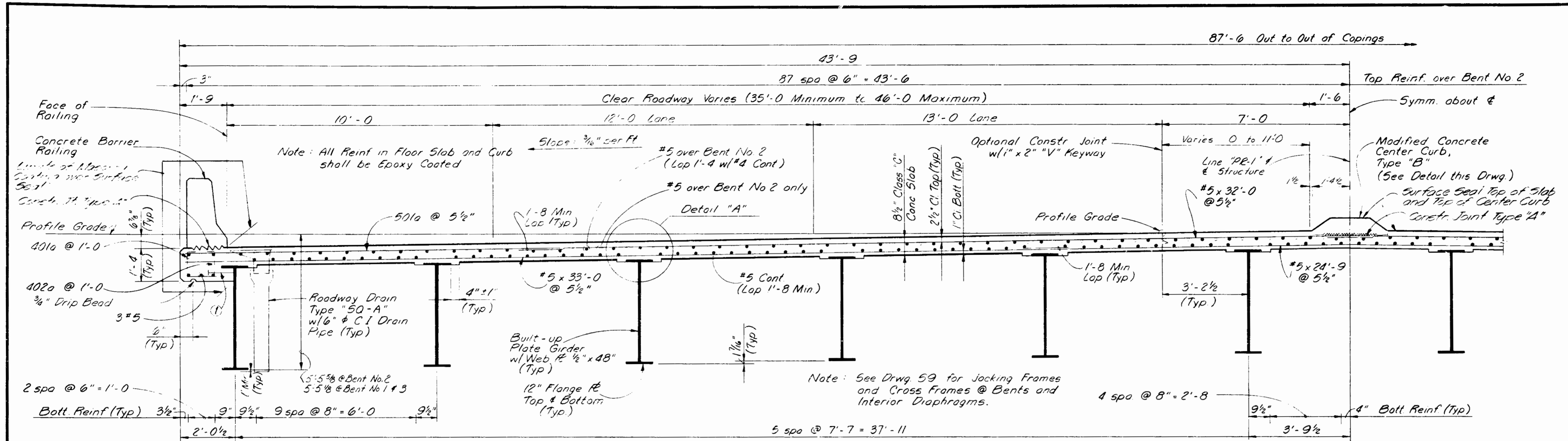
SCALE:- AS NOTED DATE:- MARCH 5, 1985

SUBMITTED FOR APPROVAL:

DRAWING: 512 OF 15 SHEET: 18 OF 51
 PROJECT:- F-170-1(2)
 CONTRACT NO: R-174 B3
 BRIDGE FILE:- 1-02-6950

DESIGNED: Grund C.K.D. R. Smith
 DRAWN: L. Parsons C.K.D. D. Miller
 THAGED: C.K.D.

HALF PLAN
 Scale 1/4" = 1'-0"
 SPAN "A" (Shown)
 SPAN "B" (Rotate 180°)



BILL OF MATERIALS
SUPERSTRUCTURE
SPANS 'A' & 'B'

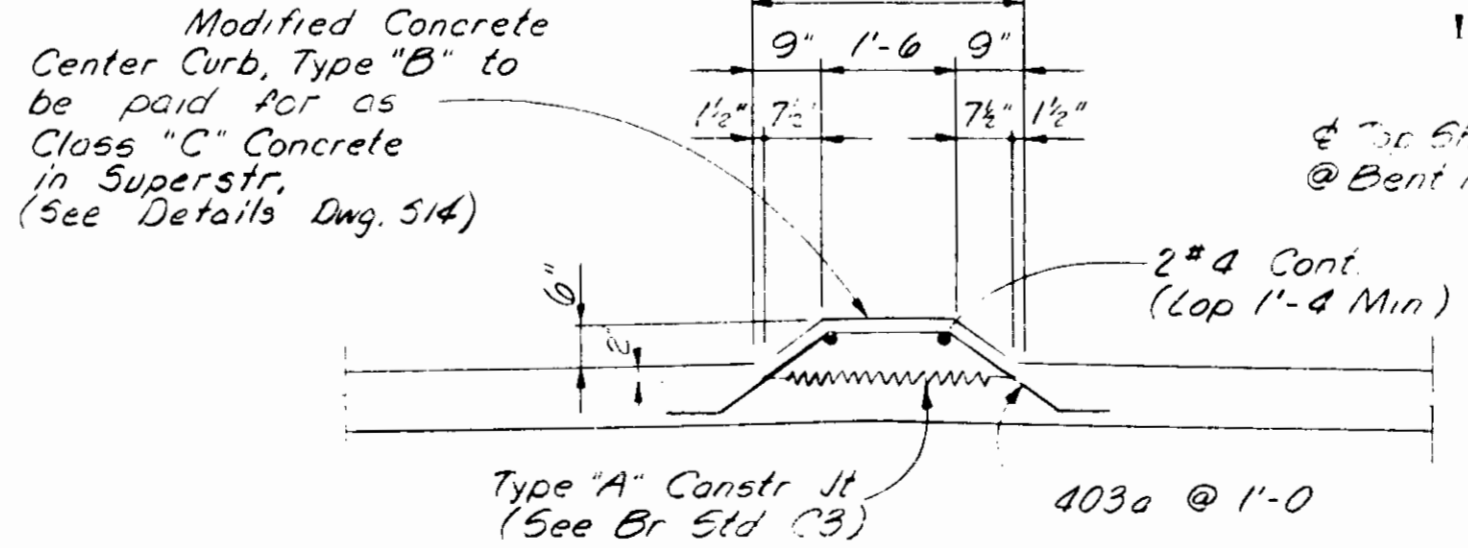
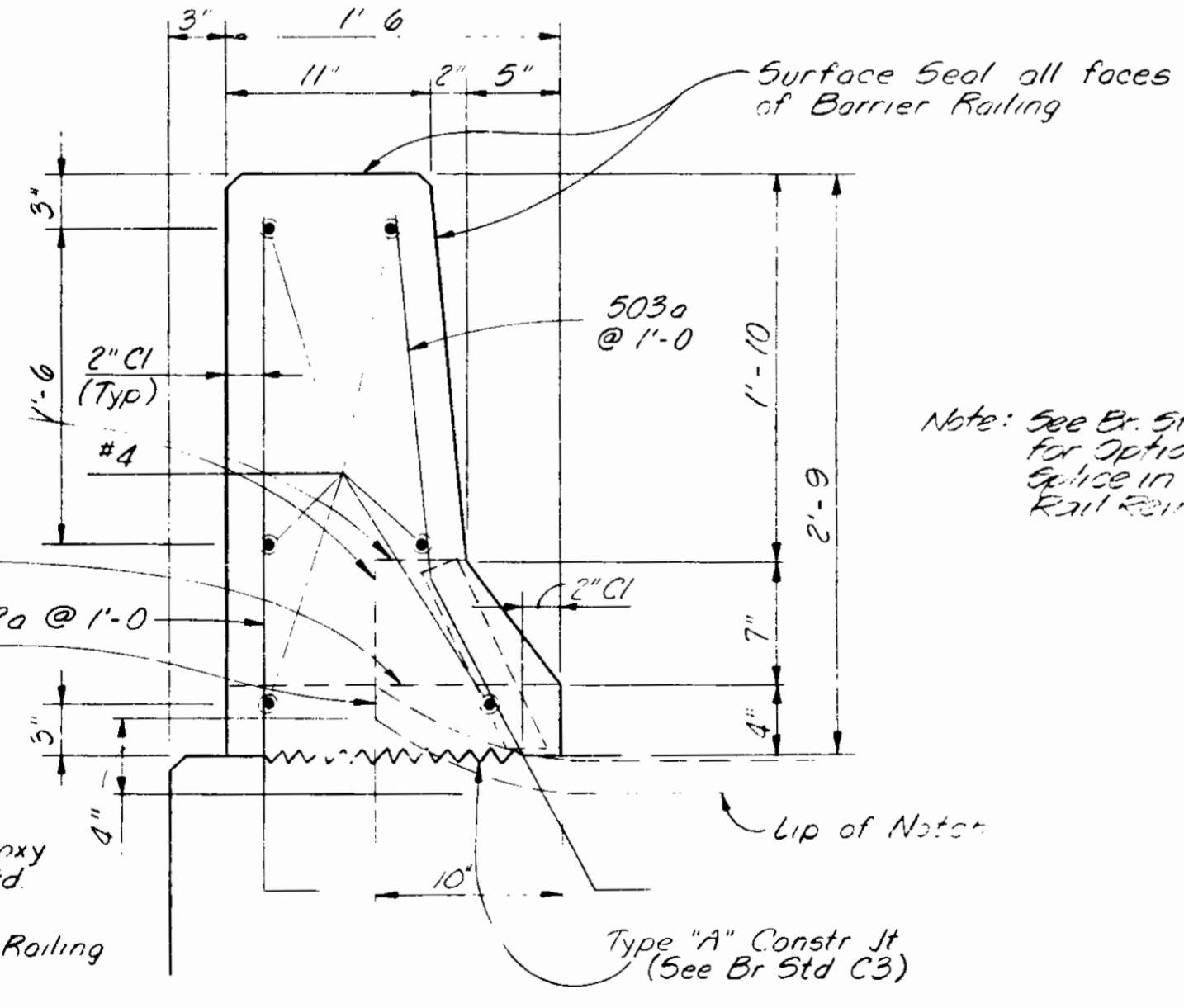
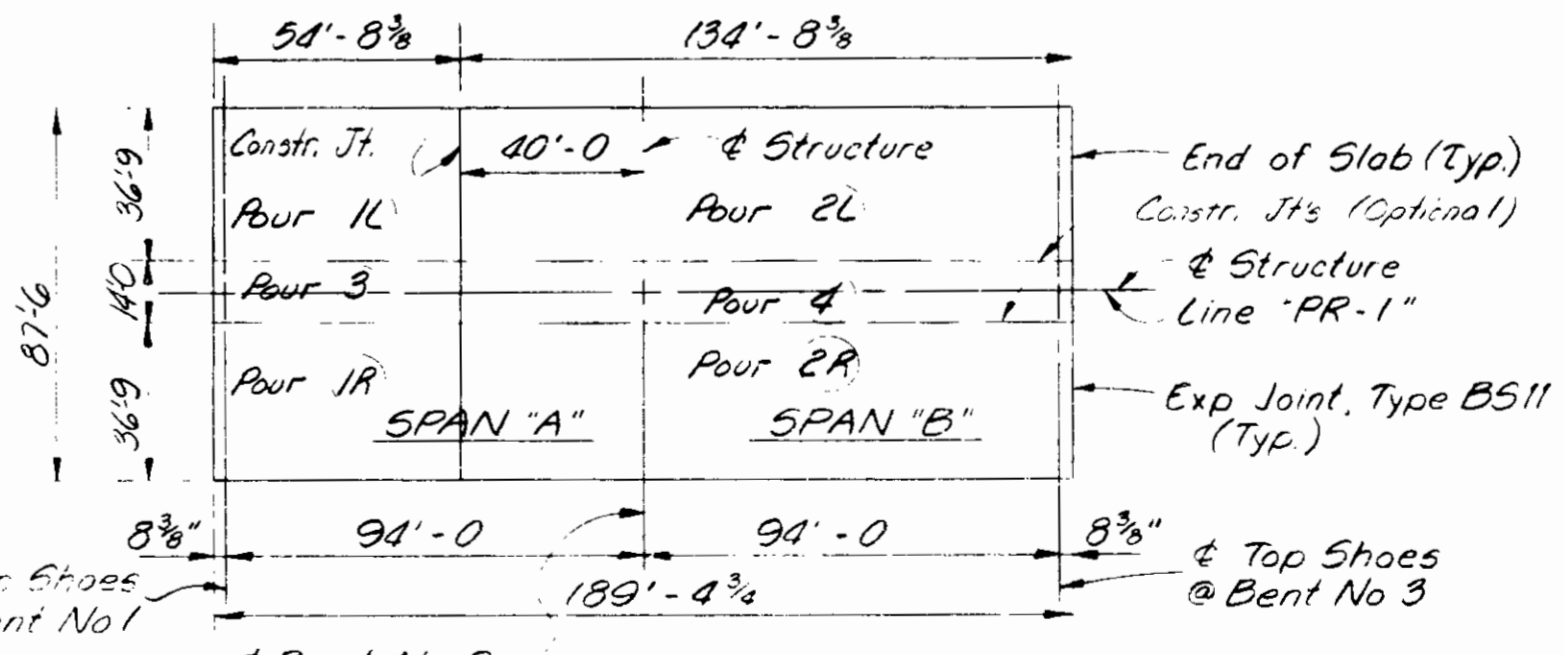
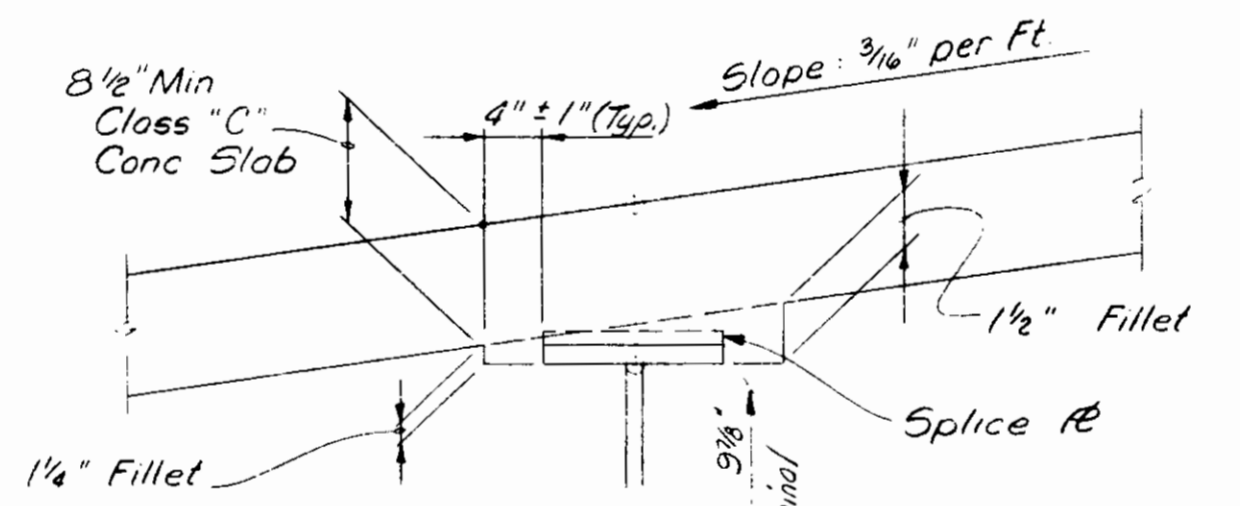
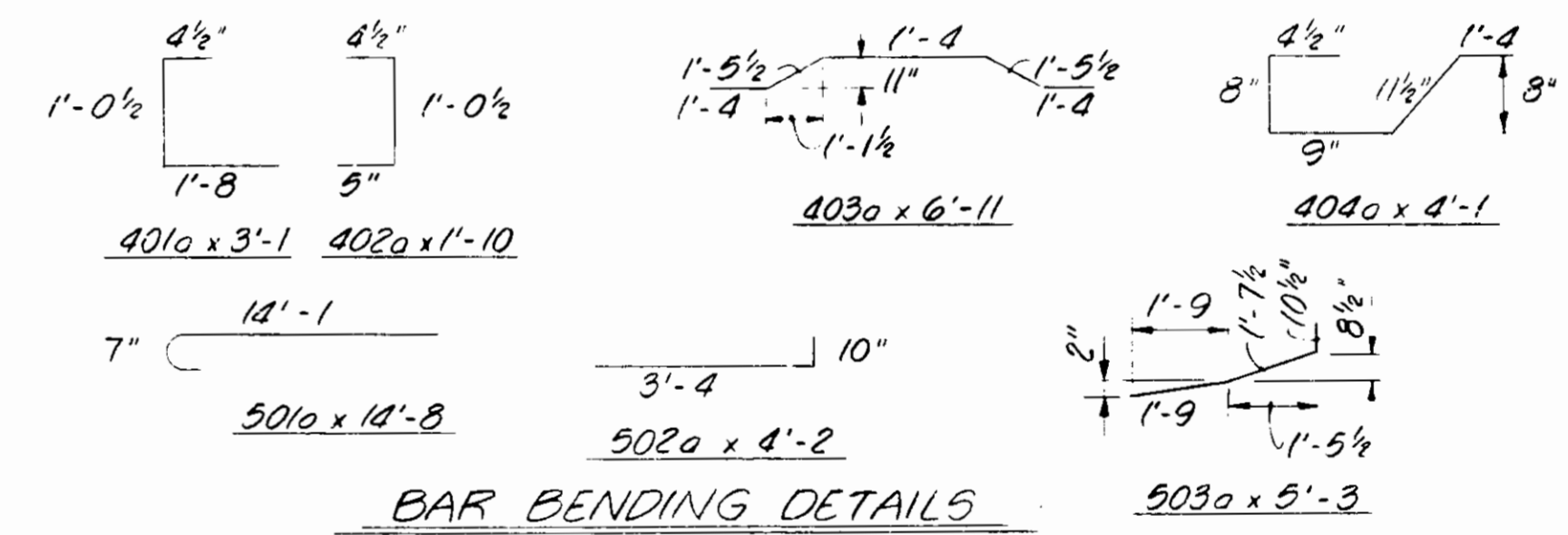
REINFORCING STEEL			
Mark or Size	No. of Bars	Length (ft)	Weight (Lbs)
501a	826	14'-8"	
502a	380	4'-2"	
503a	380	5'-3"	
#5	176	40'-0"	
#5	826	33'-0"	
#5	826	32'-0"	
#5	380	30'-0"	
#5	413	24'-9"	
#5	232	24'-6"	
#5	176	18'-0"	
Total #5 (Epoxy Coated)			117,751
401a	380	3'-1"	
402a	380	1'-10"	
403a	190	6'-11"	
404a	220	4'-1"	
#4	72	24'-6"	
#4	546	20'-0"	
#4	24	19'-3"	
#4	176	11'-9"	
#4	4	11'-3"	
#4	44	6'-6"	
Total #4 (Epoxy Coated)			13,110
Total Steel (Epoxy Coated)			130,861

CONCRETE	
Pour No. 1 L	57.0 Cys
Pour No. 1 R	57.0 Cys
Pour No. 2 L	139.2 Cys
Pour No. 2 R	139.2 Cys
Pour No. 3	29.1 Cys
Pour No. 4	29.1 Cys
Total Class "C" in Superstr.	471.7 Cys
Class "C" Concrete Railing	43.3 Cys

MISCELLANEOUS	
4-CI Roadway Drains, Type "5Q-A" @ 192 Lbs Ea	768 Lbs
4-6" & CI Drain Pipe w/ Single Hub x 4'-0 Lg @ 77 Lbs Ea	308 Lbs
Exp Joint, Type BS11	133 Lbs
Surface Seal	133.35 Lbs
Masonry Coating	3857.5 Lbs

① Welded Studs spa @ 2'-0" ctrs max. w/ 1/4" & x 0'-6" Threaded Stud w/ nut (Typ). (A-3/4" & x 0'-6" Headed Stud may be used at the Contractors option) (See Detail on Drwg. 58)

HALF-SECTION "A-A"
Scale: 1/2" = 1'-0"



Note:
Sequence of Pours to be made in order of Pour numbers.
All Superstructure Construction Joints are Optional and Pours may be continuous provided the Pour terminates at a Construction Joint indicated on the Plans.
The Contractor may change the width of Pours, Sequence of Pours, location of Construction Joints or eliminate longitudinal Construction Joints subject to the approval of the Engineer.

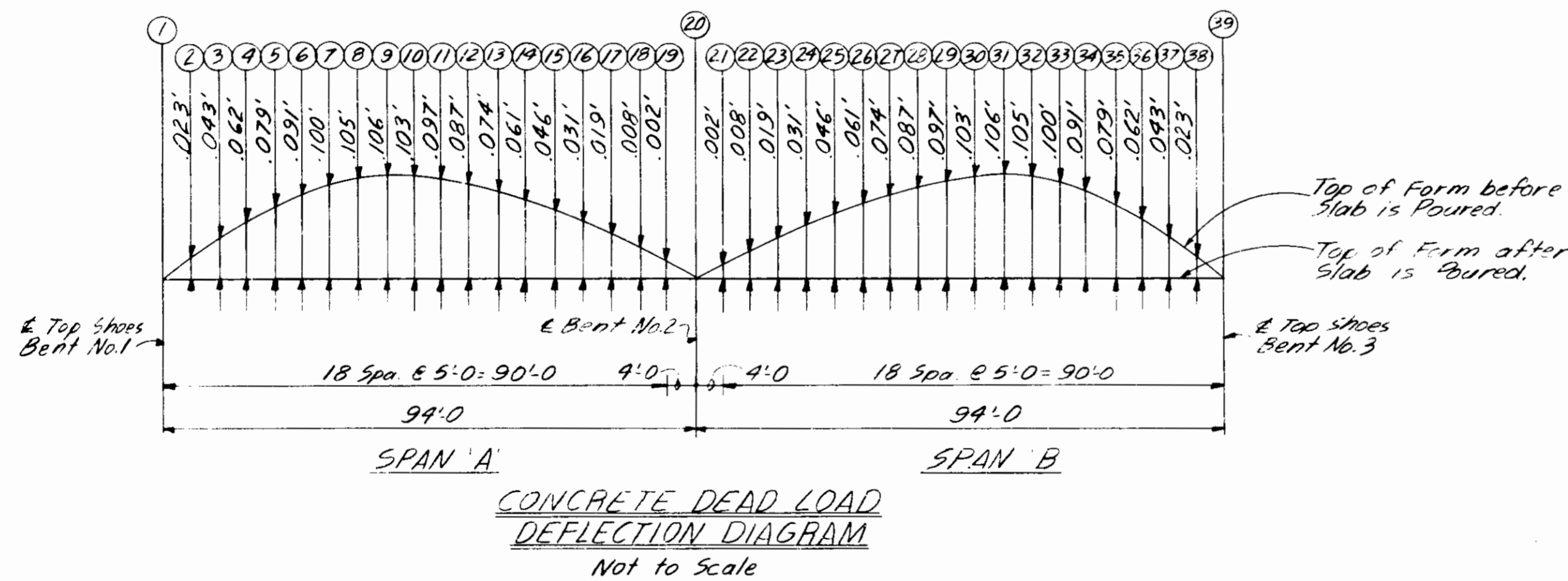
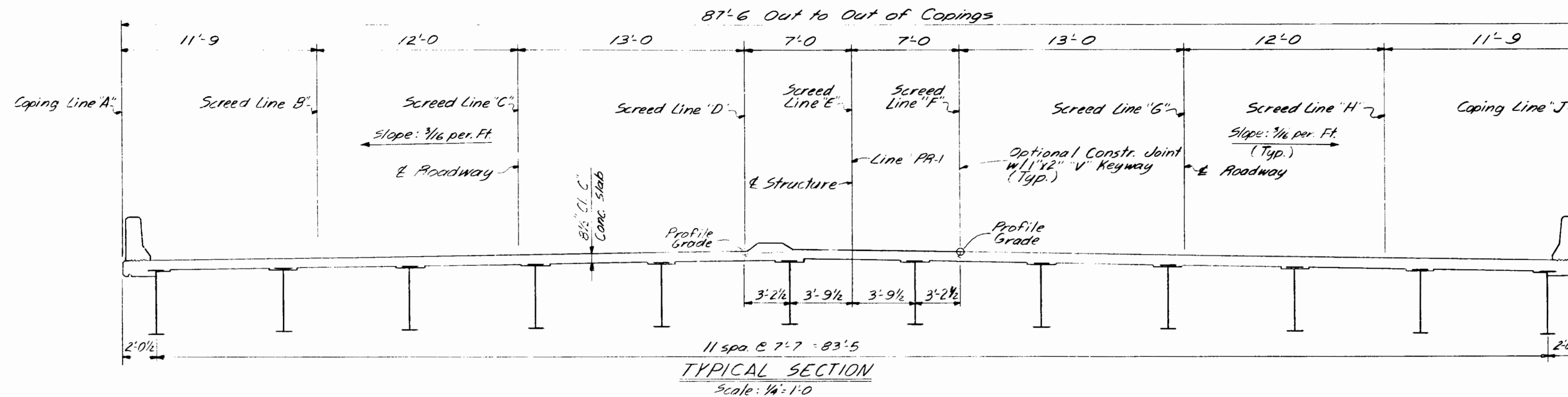
FLOOR DETAILS
INDIANA DEPARTMENT OF HIGHWAYS
ALLEN COUNTY

SCALE: AS NOTED DATE: March 5, 1985
SUBMITTED FOR APPROVAL: Robert L. Smith

DRAWING: 2 OF 15 SHEET: 19 OF 21
PROJECT: F-170-1(2)
CONTRACT NC R-17483
BRIDGE FILE: 1-02-6950

Revised 12-15-87 Added Optional Rail Reinf. Splice Note & Masonry Coating

DESIGNED: J. Brand C.R.D. R. Smith
DRAWN: C. Foster C.R.D. D. Miller
CHECKED: C.R.D.



SCREED NOTES

Screed Table elevations show data for setting Screeds and Coping Forms so that Class C Concrete Slab and Copings will be at the required elevations after all the Concrete has been Poured.
 Take elevations at all Screed points on top of adjacent Girders, enter these elevations below the tabulated elevations in the Screed Table.
 Subtract these elevations from the tabulated elevations and use the resulting dimensions as the height for setting the Screed or Coping Forms above that point. This dimension remains unchanged regardless of how much or what order the concrete is poured.
 No Concrete is to be poured until the above operation is complete.
 Do not set Screeds or Coping Forms by leveling.

NOTES

See Drwg. 5A for General Notes.
 See Drwg. 51A for Screed Plan.

SCREED ELEVATIONS

INDIANA DEPARTMENT OF HIGHWAYS
 ALLEN COUNTY

SCALE: - AS NOTED

DATE: - March 5, 1985

SUBMITTED FOR APPROVAL:

Robert L. Smith

DRAWING: - 515 OF 15 SHEET: - 21 OF 51

PROJECT: - F-170-112)

CONTRACT NO. R-17483

BRIDGE FILE: - I-02-6950

DESIGNED: *J. Brand* CKD *A. Smith*
 DRAWN: *C. Carter* CKD *D. Miller*
 TRACED: *C. Carter* CKD *D. Miller*

