

R/W INDEX

SHEET NO.	DESIGNATION	B.P.R. APPROVAL	DATE ADOPTED 'A' or LATEST REVISION 'R'
1	TITLE SHEET		
1A	PARCEL LISTING		
	ST.D. DIV. LANE INTERSTATE		
	PLAT No. 1		
	ST.D. CROSS SECTION, 6-11-1R	8/1/61	R-8/11/61
	ST.D. CROSS SECTION		
	ST.D. CROSS SECTION		
2-3	TYPICAL CROSS SECTION		
	ST.D. 8 INCH RAMP SECTION		
	ST.D. 10 INCH RAMP SECTION		
4-73	ST.D. PAVEMENT JOINTS SHEET 'A'	5/28/62	R-8/11/62
	PLAN AND PROFILE		
	DETAILS		
14	APPROACH TABLE		
15-21	RIGHT-OF-WAY PLAT No. 3		
	STRUCTURE DATA		
	ESTIMATE OF QUANTITIES		
	ESTIMATE OF QUANTITIES		
	MISCELLANEOUS STANDARDS, SHEET 'MA'		A-July, 1965
	MISCELLANEOUS STANDARDS, SHEET 'MB'		R-10/18/65
	MISCELLANEOUS STANDARDS, SHEET 'MC'		
	MISCELLANEOUS STANDARDS, SHEET 'MC1'		
	MISCELLANEOUS STANDARDS, SHEET 'MD'		
	MISCELLANEOUS STANDARDS, SHEET 'MD1'		
	MISCELLANEOUS STANDARDS, SHEET 'ME-1'		R-10/18/65
	MISCELLANEOUS STANDARDS, SHEET 'MF'		
	MISCELLANEOUS STANDARDS, SHEET 'MG'		
	MISCELLANEOUS STANDARDS, SHEET 'MH-1'		R-10/18/65
	MISCELLANEOUS STANDARDS, SHEET 'MI'		A-July, 1965
	MISCELLANEOUS STANDARDS, SHEET 'MJ'		
	MISCELLANEOUS STANDARDS, SHEET 'MK'		
	MISCELLANEOUS STANDARDS, SHEET 'MN'		R-11/24/66
	MISCELLANEOUS STANDARDS, SHEET 'MP'		R-11/20/66
	MISCELLANEOUS STANDARDS, SHEET 'MQ'		
	MISCELLANEOUS STANDARDS, SHEET 'MR'		
	MISCELLANEOUS STANDARDS, SHEET 'MS'	5/14/64	R-4/17/64
	MISCELLANEOUS STANDARDS, SHEET 'ST'		
	MISCELLANEOUS STANDARDS, SHEET 'MT-1'		A-March, 1963
	MISCELLANEOUS STANDARDS, SHEET 'MU'		
	MISCELLANEOUS STANDARDS, SHEET 'MV'		
	MISCELLANEOUS STANDARDS, SHEET 'MV-1'		
	ST.D. GUARD RAIL		
	STEEL BEAM GUARD RAIL		
34	BEAM GUARD RAIL GR-1		A-July, 1965
35	ST.D. FOR SUPERELEVATION	2/27/61	A-JANUARY, 1961
	ST.D. FOR SUPERELEVATION AND WIDENING OF CURVES		
36	ST.D. DETOUR SIGNS, SHEET 1		R-3/8/65
37	ST.D. DETOUR SIGNS, SHEET 2		R-3/8/65
38-39	ST.D. DETOUR SIGNS, SHEET 3 AND SHEET 3A		R-3/8/65
40	ST.D. DETOUR SIGNS, SHEET 5		R-12/11/61, R-8/21/62
41	CONSTRUCTION IDENTIFICATION SIGNS	3-9-64	A-February, 1964
42-127	CROSS SECTION		

SHEET NO.	DATE	REVISED
11	5/25/65	Temp R/W For Building Removal
15	5-28-66	Limits of F.F.T.F.
10, 21, 22	6-30-66	R/W & Drives
9, 5, 7, 11	5-27-65	ADDED TOPO.
1, 5, 7, 4	10-13-66	R/W & Drives, STA. 2212 To 3475 U.S.
1, 5, 7, 10, 11, 14	11-16-66	TOPO. REVISED & ADDED
4, 5, 7, 10, 11, 14	12-6/12-66	PARCELS 34, 39, 7A, 8B, 9A, 10, 13A, 14, 21A, 22, 21B, 24B, 26A, 28, 27, 27A, 31A
4, 5, 6, 7, 9, 10, 11	4-11-68	Eliminated Parcels 7A, 8B, 8C, 10B, 21A, 21B, 24B, 31A, 31B, 33A, 34B, 35C, 37B, 37C & 37 D.
4-STA 90 to 120	PP. TABLE 10/18/66	R/W, DRIVES & P.S.
9A	5-7-71	TEMP. R/W STA. 379 to 384 R/W

BEGIN PROJECT F-69 (56)
STA. 26+775

INDIANA STATE HIGHWAY COMMISSION
STANDARD SPECIFICATIONS DATED 1963
TO BE USED WITH THESE PLANS.

RIGHT OF WAY PLANS

STATE OF INDIANA

INDIANA STATE HIGHWAY COMMISSION

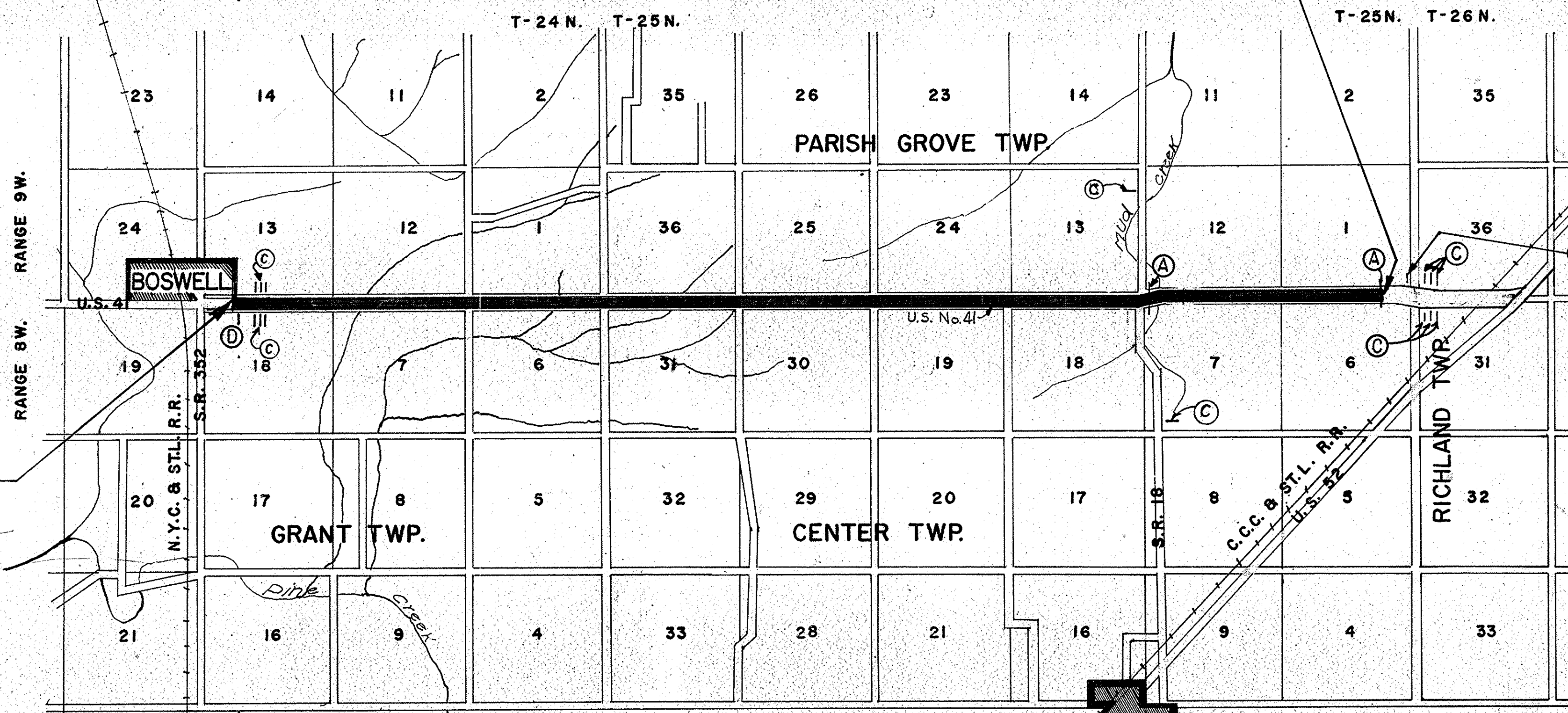
PLAN AND PROFILE OF PROPOSED
STATE HIGHWAY

F-PROJECT NO. 69 (56) ~~PE~~ R/W

U.S. 41 (50) CONSTR.

BEGINNING AT A POINT ON ROAD US 41, APPROXIMATELY 3,959.5 FEET SOUTH OF THE
NORTHEAST CORNER OF SECTION 13 T24N, R9W AND EXTENDING IN A NORTHERLY DIRECTION
FOR A DISTANCE OF 44,422.5 FEET TO A POINT ON ROAD US 41 APPROXIMATELY 1176 FEET
SOUTH OF THE NORTHEAST CORNER OF SECTION 1 T25N, R9W ALL IN BENTON COUNTY

GROSS LENGTH: 8.4133 MI.
NET LENGTH: 8.4133 MI.
SCALES:
PLAN (LONG: 1"=100' TRANS: 1"=100') PROFILE (HORIZ: 1"=100' VERT: 1"=10')
MAX. GRADE 3.14 %



BENTON CO.

SCALE 1" = 3520'

FOWLER

RECOMMENDED FOR APPROVAL 7-15-66
C.J. Klingelhoefer
ENGINEER OF PLANS AND SPECIFICATIONS - INDIANA STATE HIGHWAY COMMISSION

Code 0571
F-69 (56)
US-41 Benton Co.
22 Sheets

FEDERAL ROAD DIVISION NO.	STATE	PROJ. NO.	FISCAL YEAR	SHEET NO.	TOTAL SHEETS
4	IND.	F-69	1963	1	(56)

DESIGN DATA		
A.D.T. (1963)	3300	V.P.D.
A.D.T. (1983) PROJECTED	6000	V.P.D.
D.H.V.	675	V.P.D.
DIRECTIONAL DISTRIBUTION	55 %	
TRUCKS	22 %	
DESIGN SPEED	50 M.P.H.	
ACCESS CONTROL	PARTIAL	

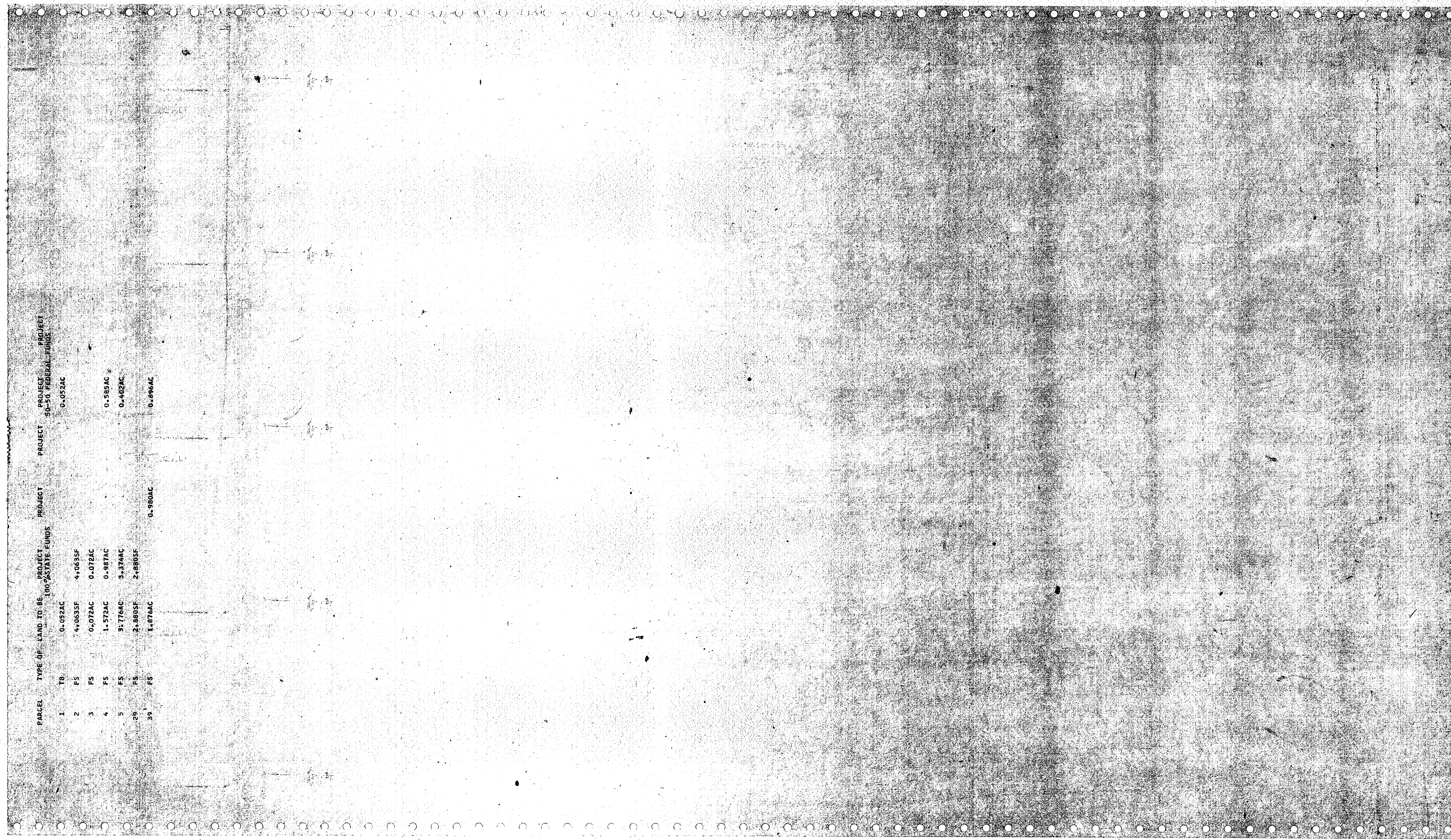
CODE NO. 0571

END PROJECT F 69 (56)
STA. 471+00.0
= STA. 470+86.6
(BEGIN PROJECT F-69 (60))

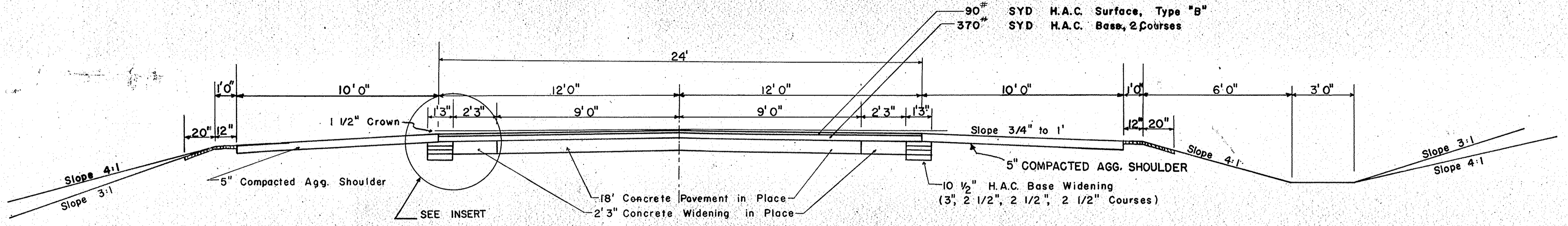
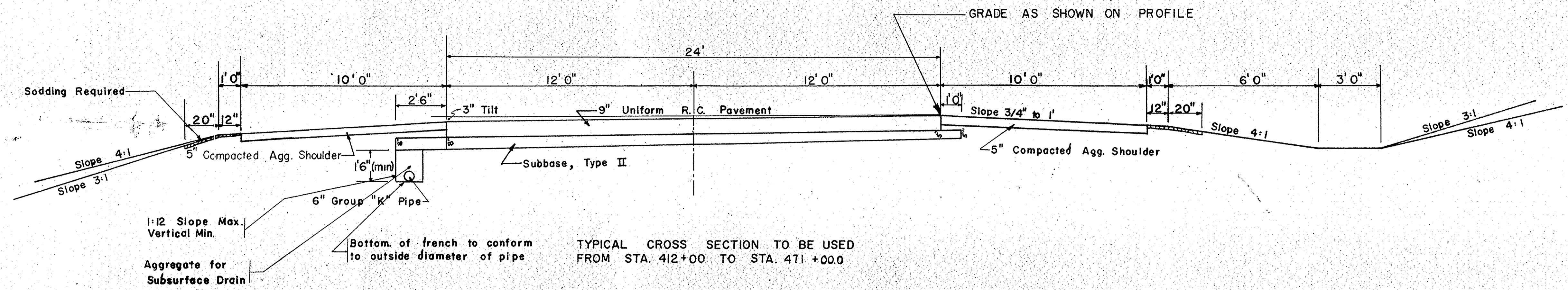
- LEGEND
- (A) STANDARD BARRICADE, TYPE "A"
 - (C) TYPICAL SIGN STANDARDS
 - (D) CONSTRUCTION IDENTIFICATION SIGN

APPROVED 7-18-66
F.T. Dillman
CHIEF ENGINEER, INDIANA STATE HIGHWAY COMMISSION

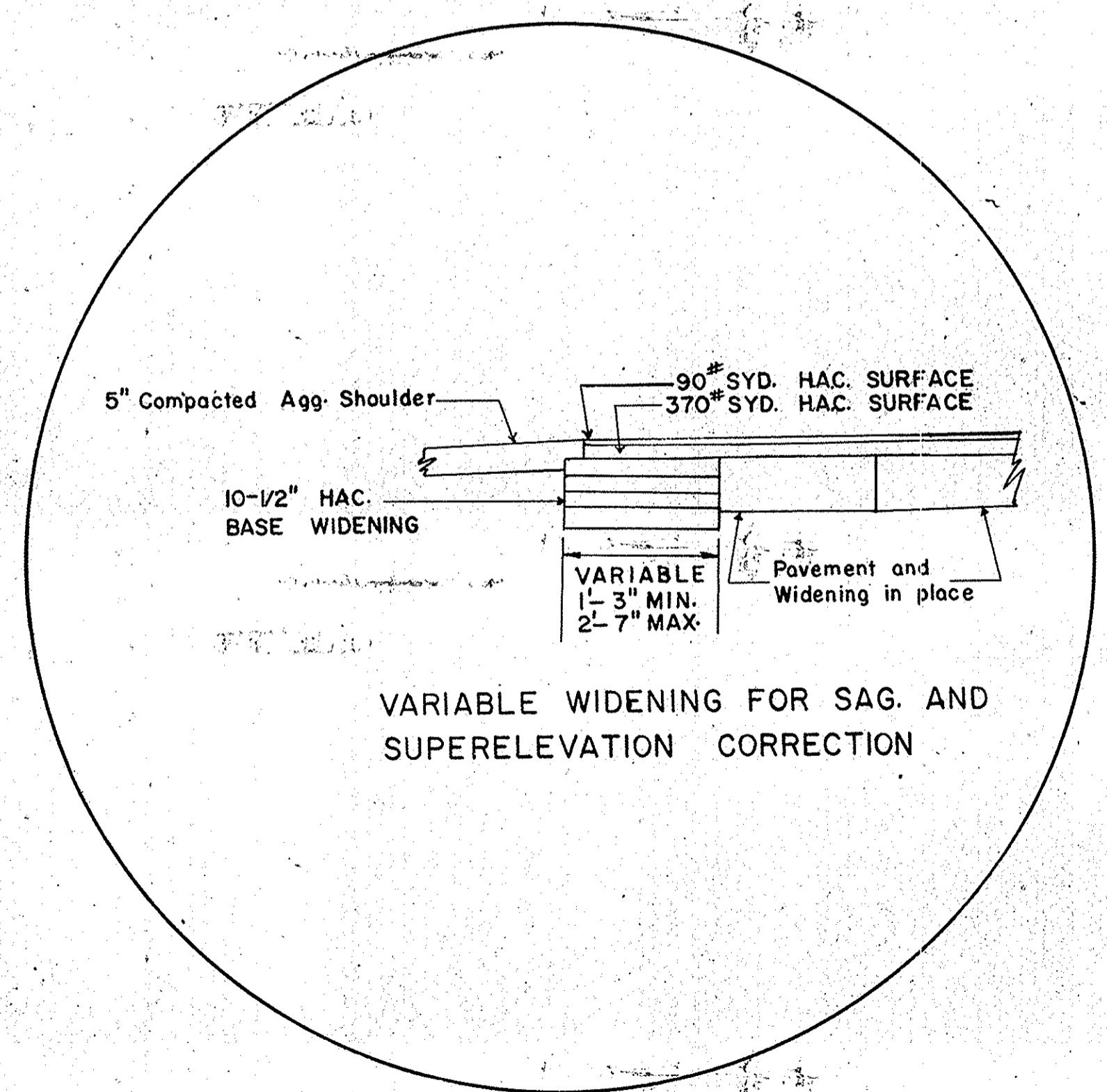
ROADS
MERGE
DATE



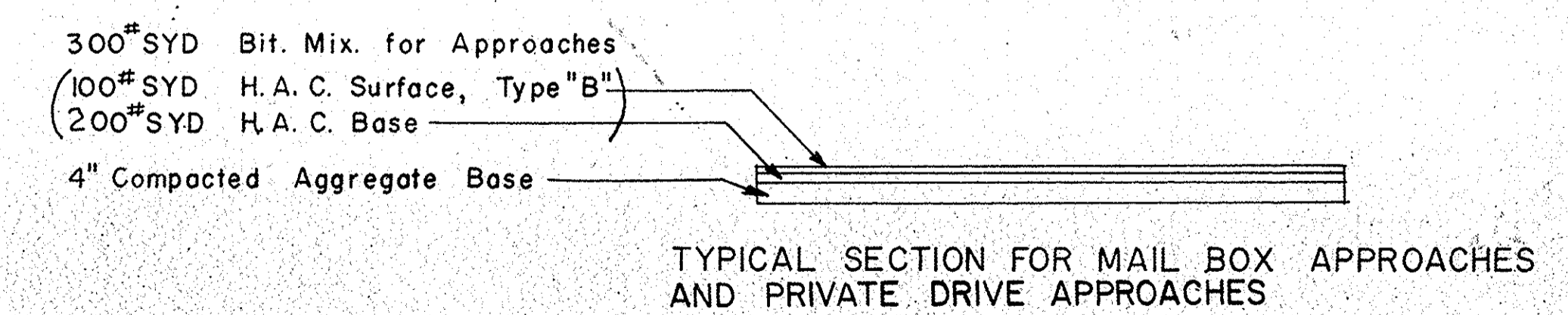
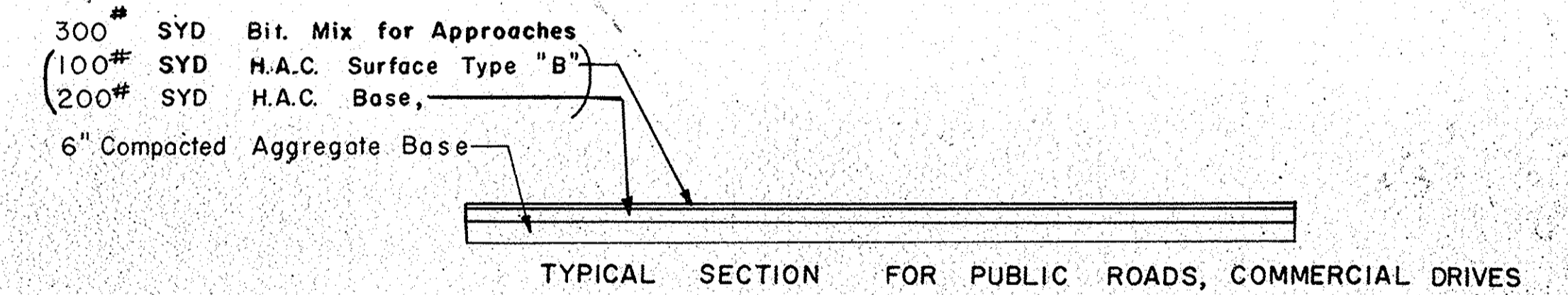
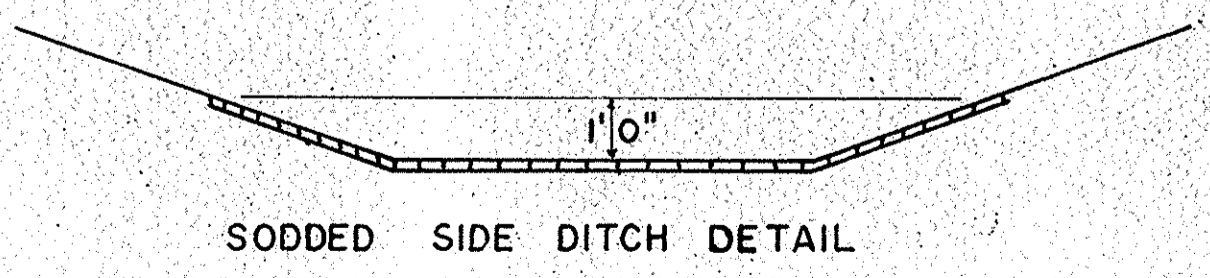
PARCEL TYPE OF LAND TO BE PROJECT PROJECT PROJECT PROJECT
 1 TB 0-092AC 100% STATE FUNDS 50-50 FEDERAL FUNDS
 2 FS 4-0635F 4-0635F 0-052AC
 3 FS 0-072AC 0-072AC 0-588AC
 4 FS 1-572AC 0-987AC 0-402AC
 5 FS 3-776AC 3-374AC 0-966AC
 29 FS 2-8805F 2-8805F
 39 FS 1-876AC 0-980AC



STRAIGHT BEAM GUARD RAIL
Station 383+26 4 Funnels at 42.5=170 Lft.



INSERT



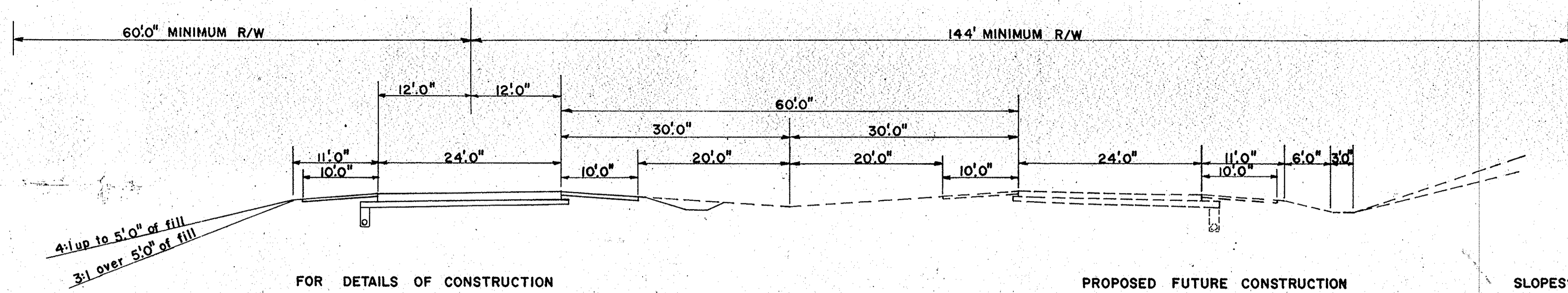
TYPICAL CROSS SECTIONS

SCALE: 1" = 3' 0"

APPROVED _____
CHIEF ENGINEER - INDIANA STATE HIGHWAY COMMISSION

RECOMMENDED FOR APPROVAL _____
ENGINEER OF ROAD DESIGN, INDIANA STATE HIGHWAY COMMISSION

FEDERAL ROAD REGION NO.	STATE	PROJECT NO.	FISCAL YEAR	SHEET NO.	TOTAL SHEETS
4	IND.	F 69 (56)	1963	3	



4:1 up to 5'0" of fill
3:1 over 5'0" of fill

FOR DETAILS OF CONSTRUCTION
SEE SHEET NO.

PROPOSED FUTURE CONSTRUCTION

SLOPES: 4:1 up to 5'0" of cut
3:1 over 5'0" of cut

TYPICAL CROSS SECTIONS

SCALE:-

RECOMMENDED FOR APPROVAL _____

APPROVED _____
CHIEF ENGINEER - INDIANA STATE HIGHWAY COMMISSION

ENGINEER OF ROAD DESIGN, INDIANA STATE HIGHWAY COMMISSION

November 6, 1961

PROJECT NO.	LINE	SHEET NO.	TOTAL SHEETS	FILE
F-69(56)		3		

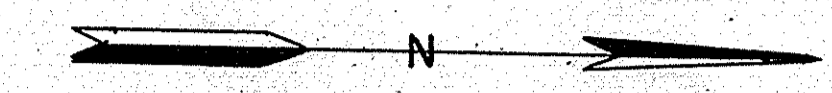
Rev. 11-30-67 Added Parcels 8B & 8C
 Rev. 9-5-67 Add Temp. RW Bldg. Removal
 H.B. Woodcock Sta. 49+85 to 50+55 Left
 Rev. 11-20-67, R/E Secured For Bldg.
 Rev. 11-23-69, New Limits Of Construction & Limits Of Federal Participation In R/W @ 50+50.
 Rev. 10-23-69, New Limits Of Construction & Limits Of Federal Participation In R/W @ 50+50.
 Rev. 10-13-66 21W AND DEWES STA. 22+11 TO STA. 26+75 PER ROAD DESIGN
 Rev. 5-27-65 ADDED TOPO.
 Federal Road Division No. 4
 State Project No. IND.F 69 (56)
 Fiscal Year 1963
 Sheet Total 4

(UTILITIES)
 BELL TELEPHONE CO.
 NORTHERN INDIANA PUBLIC SERVICE CO.
 WARREN CO. R.E.M.C.
 TRUNKLINE GAS CO.

Subject to an agreement in favor of Robert S. & Elizabeth C. Nesbitt for Right of Entry for maintenance and guaranteed the use of water at all times.

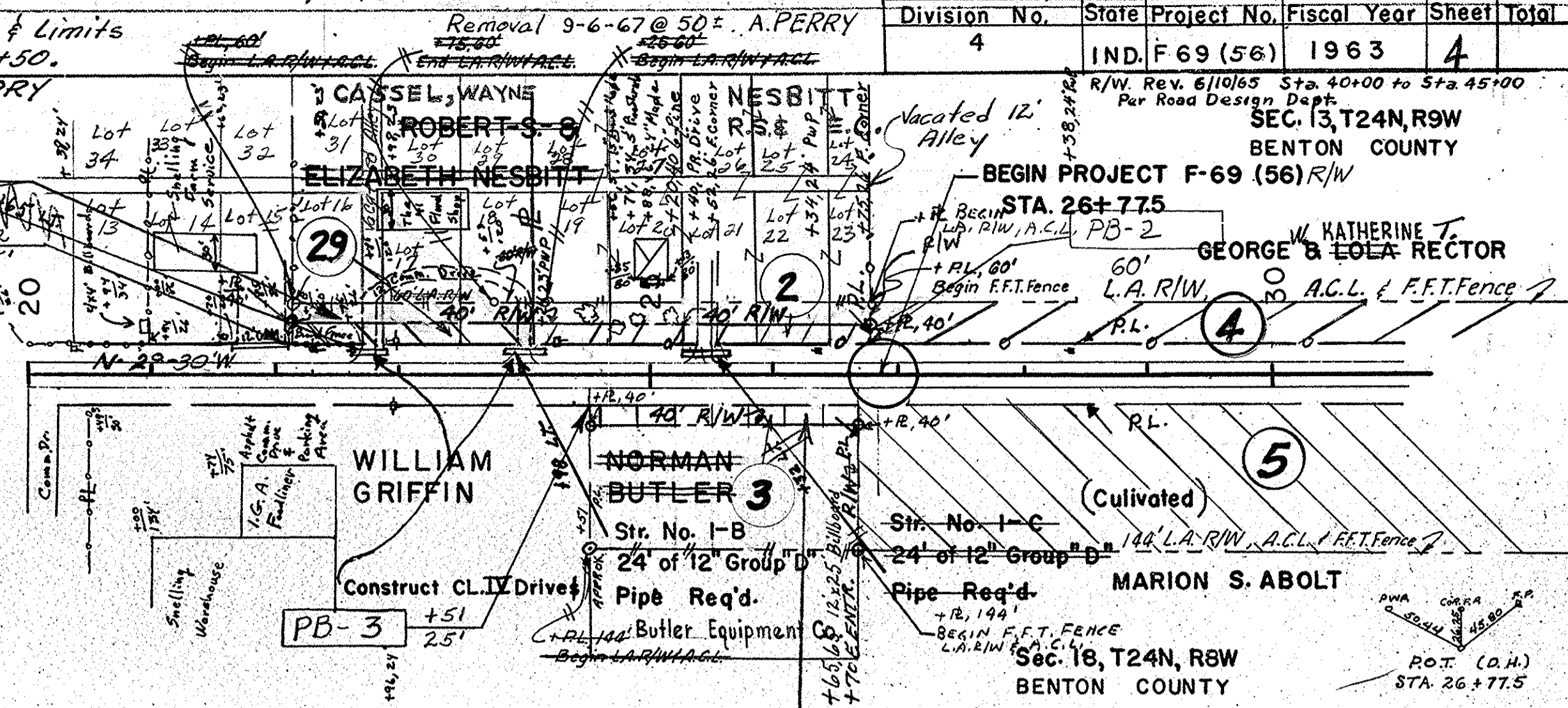
Subject to an easement in favor of the Northern Indiana Public Service Company.

Str. No. 1-A
 24' of 12" Group "D"
 Pipe Req'd.
 PB-29
 JAMES MAZEY'S
 3RD ADDITION TO THE TOWN OF BOSWELL, IND.



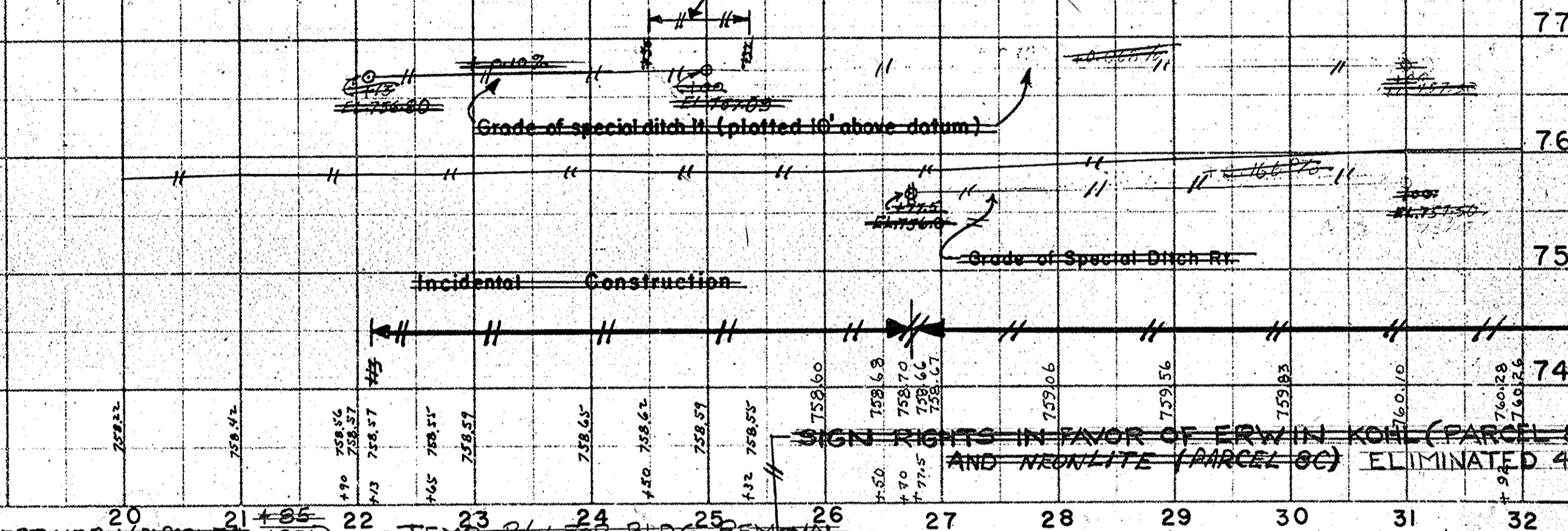
ALL R/W ON THIS SHEET TO BE AS SHOWN
 R/W TO BE ACQUIRED UNDER LIMITED ACCESS PROVISIONS. POINTS OF ACCESS TO BE AS SHOWN BELOW.

24-04' Class II
31+95' Lt. Class II
31+95' Rt. Class II
41+75' Lt. Class II
49+75' Lt. Class II

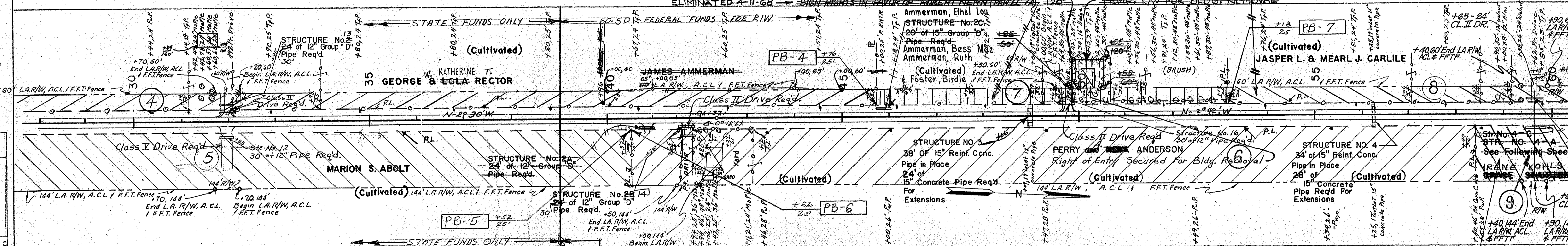


STANDARD PAVEMENT SECTION E-11 (REV. JULY 1963) TO BE USED ON THIS PROJECT
 TYPICAL CROSS SECTIONS AS SHOWN ON SHEETS NO. 1 TO NO. 10 INCLUSIVE TO BE USED ON THIS PROJECT
 STATE HIGHWAY COMMISSION OF INDIANA STANDARD SPECIFICATIONS DATED 1960, TO BE USED ON THIS PROJECT
 STANDARDS UNDER DATES AS LISTED IN INDEX ON TITLE SHEETS TO BE USED ON THIS PROJECT
 GRADE LINE AS SHOWN ON PROFILE REPRESENTS TOP OF FINISHED SURFACE.
 FOR KINDS OF PIPE PERMITTED FOR EACH SIZE AND CLASSIFICATION AS SHOWN IN STRUCTURE NOTES,
 SEE MISCELLANEOUS STANDARD SHEETS MP AND MPI
 QUANTITIES FOR PIPE CULVERT HEADWALLS ARE BASED ON USING STANDARD HEADWALLS FOR CROSS STRUCTURES AND PRIVATE DRIVE HEADWALLS FOR SIDE STRUCTURES
 ALL DITCHES OF 1% AND OVER SHALL BE SODDED EXCEPT WHERE PAVED SIDE DITCH IS TO BE CONSTRUCTED
 SODDING SHALL BE PLACED ALONG PAVED SIDE DITCHES IN ACCORDANCE WITH STANDARD SHEET ME
 EXCAVATION QUANTITIES AS SHOWN ON PLAN AND PROFILE SHEETS INCLUDE ESTIMATED EXCAVATION FOR PRIVATE AND PUBLIC APPROACHES AS SHOWN ON SHEET NO.
 CURVES SHALL BE SUPERELEVATED IN ACCORDANCE WITH THE STANDARDS OF JANUARY 1961
 ALL DITCHES OF 3% GRADE AND OVER SHALL BE PAVED
 ALL EARTH SHOULDERS, CUT AND FILL SLOPES SHALL BE PLAIN OR MULCHED SEEDED EXCEPT WHERE SODDING IS SPECIFIED
 OVERHAUL AND ADDED HAUL QUANTITIES AS SHOWN ON PLAN AND PROFILE SHEETS ARE FOR INFORMATION ONLY AND WILL NOT BE PAID FOR DIRECTLY

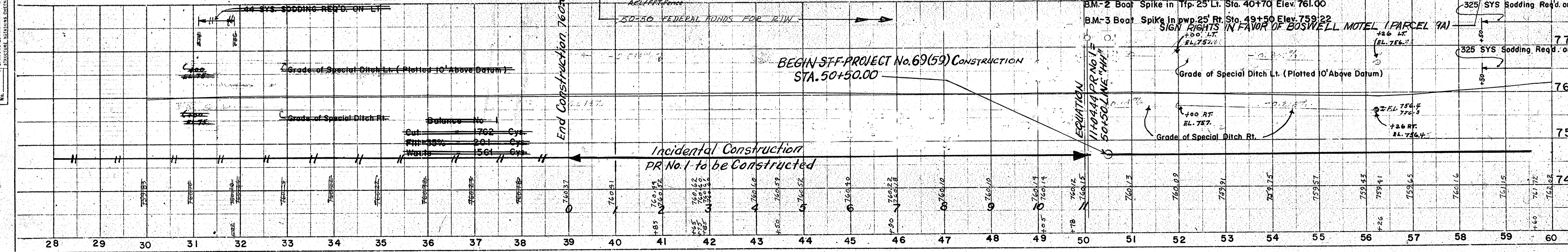
SIGN RIGHTS IN FAVOR OF INDO ADVERTISING (PARCEL 3A)



ELIMINATED 4-11-68 SIGN RIGHTS IN FAVOR OF ROBERT NESBITT (PARCEL 7A)



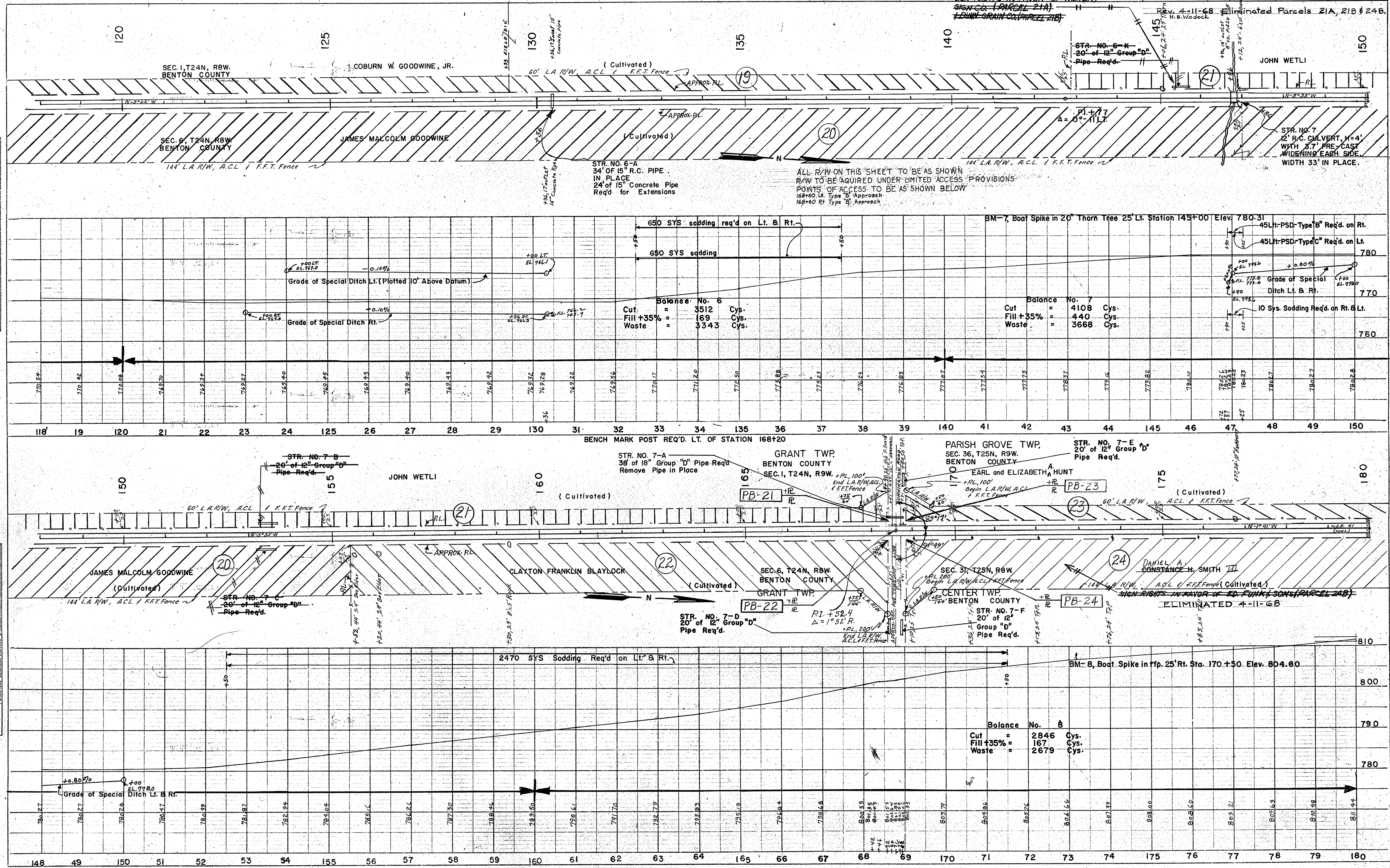
BEGIN STP PROJECT No. 69 (59) CONSTRUCTION
 STA. 50+50.00



ELIMINATED 4-11-68 → SIGN RIGHTS IN FAVOR OF MEYER
 SIGN CO. (PARCEL 21A)
 DOWN GRAIN CO. (PARCEL 21B)
 Rev. 4-11-68 H. B. Woodcock
 Eliminated Parcels 21A, 21B & 24B

PLAN
 DRAWN BY: []
 CHECKED BY: []
 DATE: []
 NOTE: []

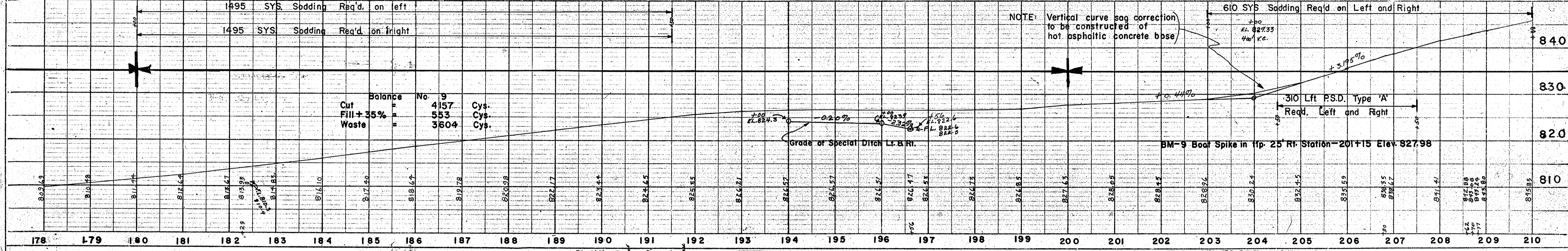
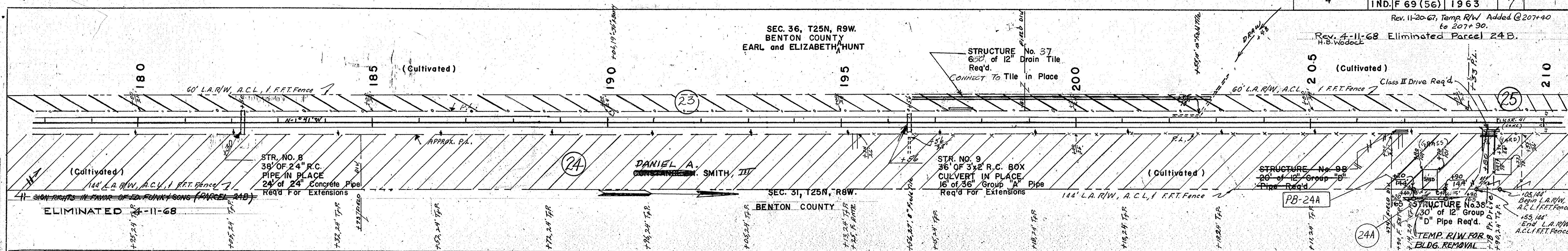
PROFILE
 DRAWN BY: []
 CHECKED BY: []
 DATE: []
 NOTE: []



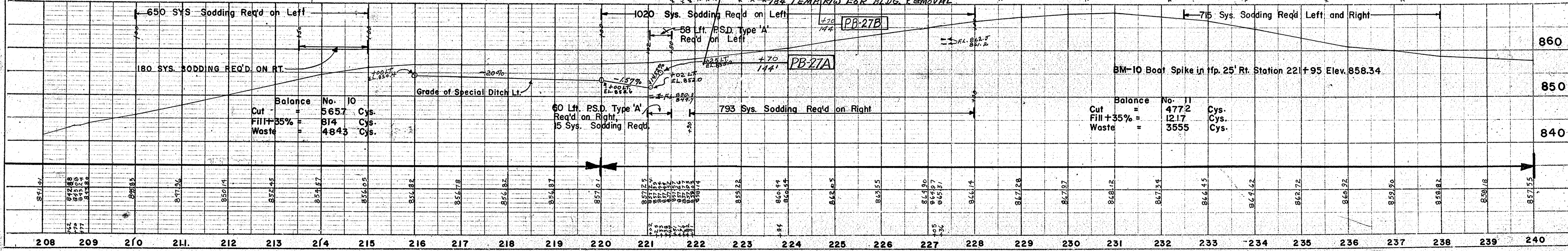
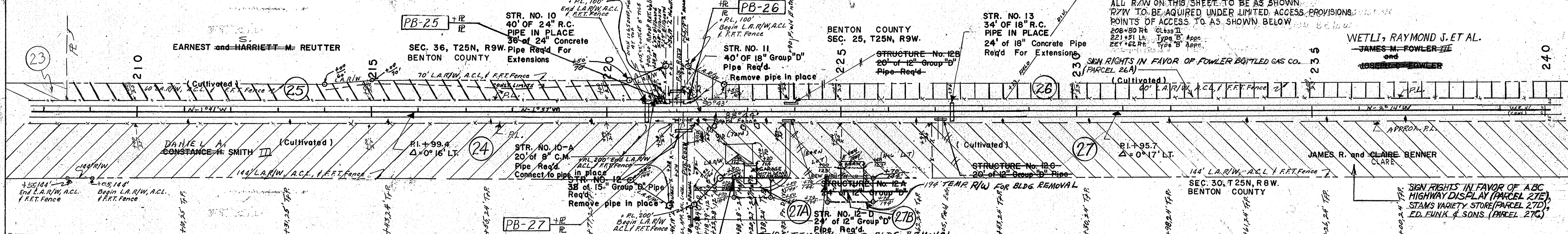
SEC. 36, T25N, R9W.
 BENTON COUNTY
 EARL and ELIZABETH HUNT

Rev. 11-20-67, Temp R/W Added @ 207+40 to 207+90.
 Rev. 4-11-68 Eliminated Parcel 24B.

PLAN
 NOTE BOOK
 NO. 10

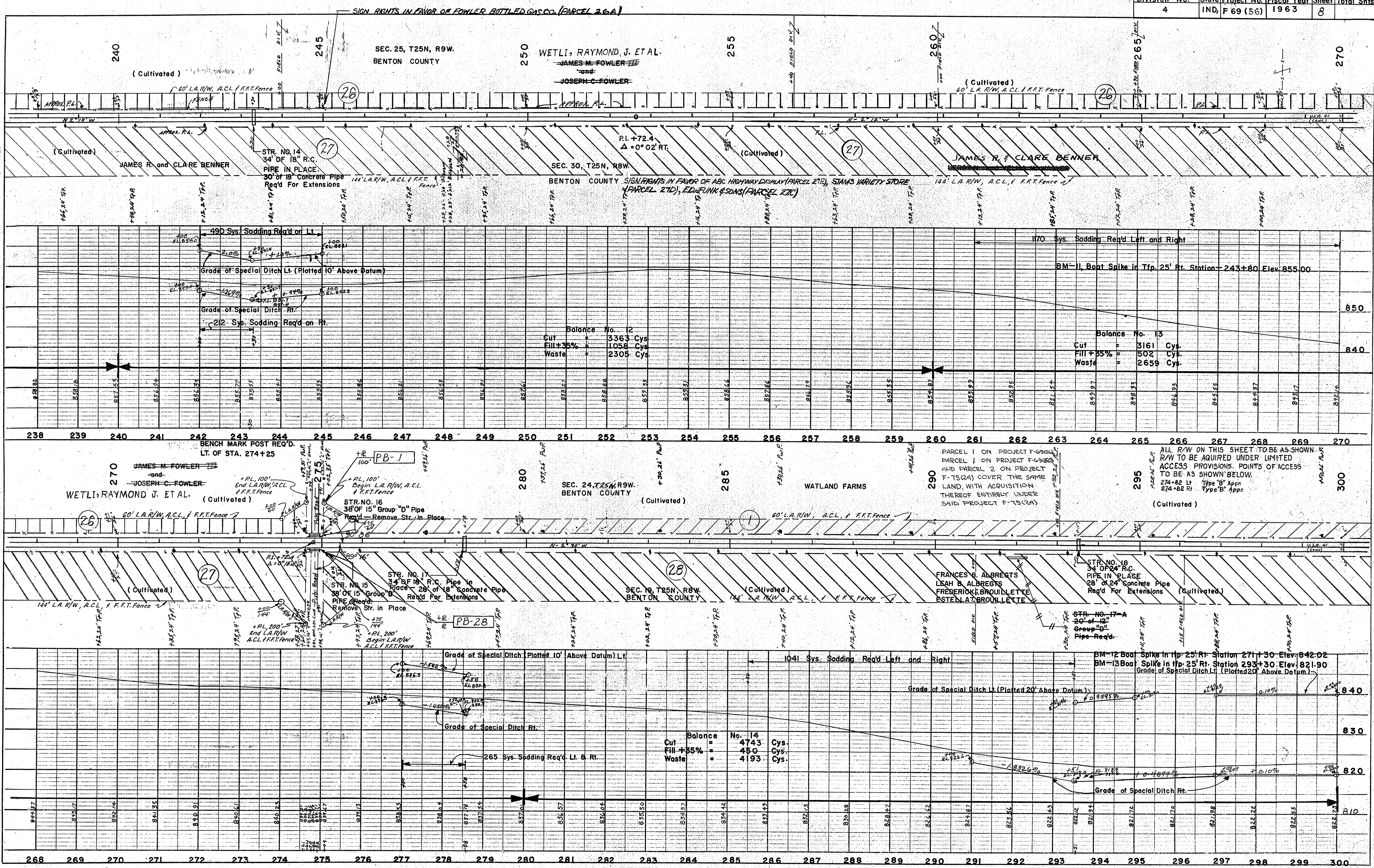


PROFILE
 NOTE BOOK
 NO. 10

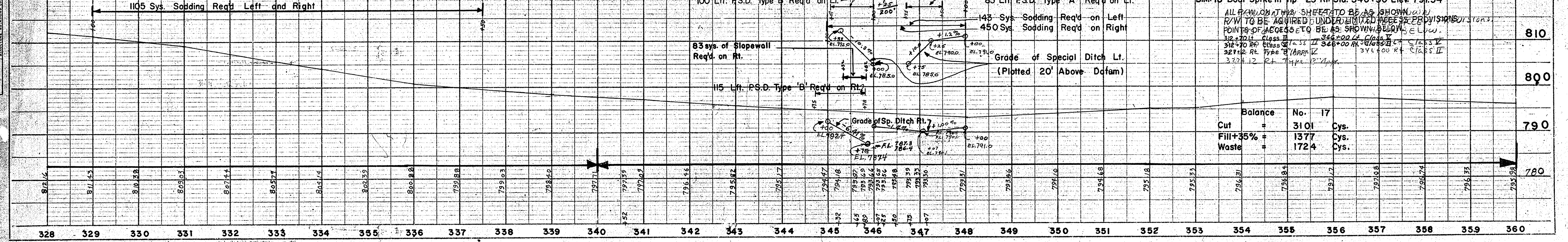
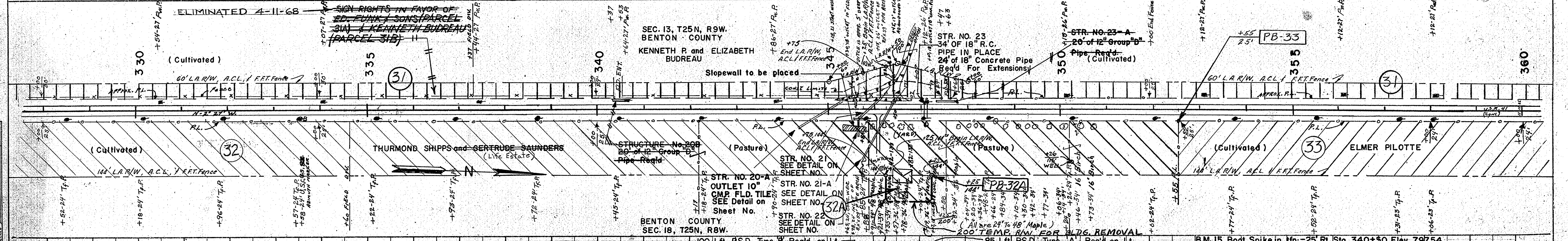
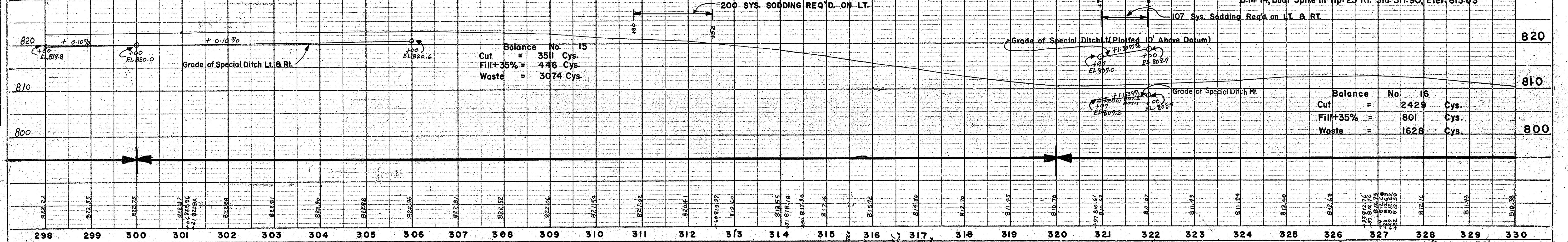
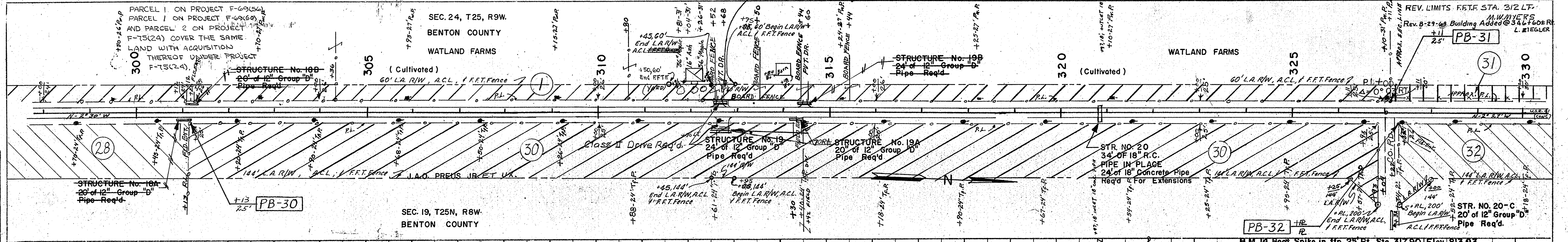


PLAN
 NUMBERED
 PLANNING
 ALIGNMENT CHECKED
 NOTE BOOK
 BY: []
 DATE: []

PROFILE
 NUMBERED
 PLOTTED
 GRADES CHECKED
 NOTE BOOK
 BY: []
 DATE: []



Federal Road	REV. 12-4-67 ADDED PARCELS 31A & 31B R.C.A.
Division No.	State Project No. Fiscal Year Sheet Total Shts.
4	IND. F 69 (56) 1963 9



PLAN
 SURVEYED BY
 NOTES BOOK NO. 100
 DATE 10/1/68
 CHECKED BY
 DATE 10/1/68

PROFILE
 SURVEYED BY
 NOTES BOOK NO. 100
 DATE 10/1/68
 CHECKED BY
 DATE 10/1/68

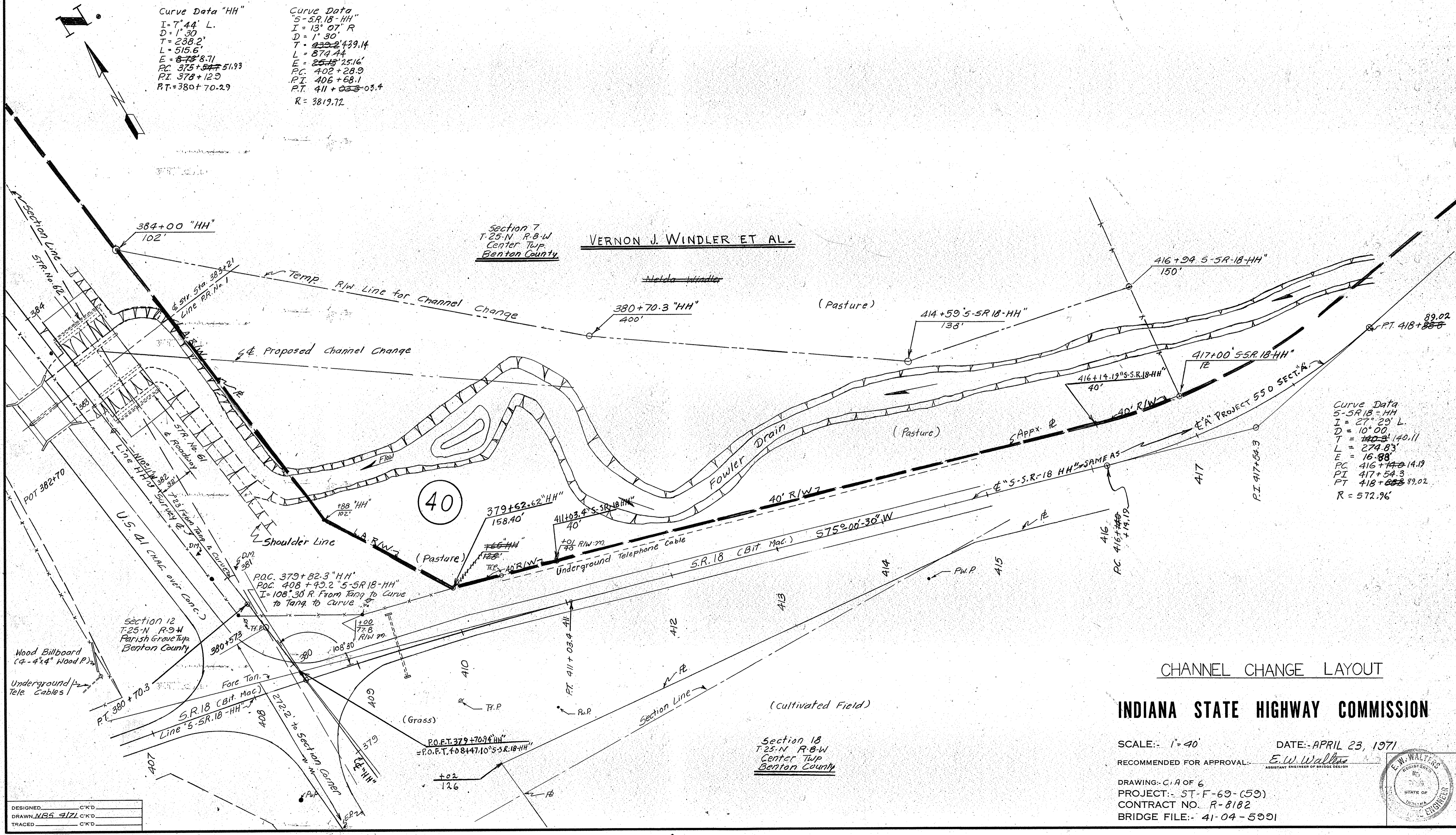
BRIDGES OVER 20' SPAN					
PUB. ROAD REG. NO.	STATE	PROJECT NO.	FISCAL YEAR	SHEET NO.	TOTAL SHEETS
4	IND.	69159	1969	9A	

REV. 5-7-71 (LR-4-23-71) ADD NEW SH. SHOWING TEMP. R/W FROM STA. 384+00 RT. "HH" TO STA. 416+94 LT. "S-SR-18-HH". ADD PARCEL 40. E.E. FARROW (BY: F.B. SMITH)

Curve Data "HH"
 I = 7° 44' L.
 D = 1' 30"
 T = 238.2'
 L = 515.6'
 E = 873.87'
 PC 375+54.7
 PI 378+12.9
 PT 380+70.29
 RT = 380+70.29

Curve Data
 "S-SR-18-HH"
 I = 13° 07' R
 D = 1' 30"
 T = 439.2439.14
 L = 874.44'
 E = 2516.2516'
 PC 402+28.9
 PI 406+68.1
 PT 411+03.4
 R = 3819.72

Curve Data
 S-SR-18-HH
 I = 27° 29' L.
 D = 10° 00"
 T = 140.11'
 L = 274.83'
 E = 16.88'
 PC 416+14.19
 PI 417+54.3
 PT 418+89.02
 R = 572.96'



DESIGNED	C.K.D.
DRAWN	M.B.S. 9121
TRACED	C.K.D.

CHANNEL CHANGE LAYOUT

INDIANA STATE HIGHWAY COMMISSION

SCALE: 1" = 40'

DATE: APRIL 23, 1971

RECOMMENDED FOR APPROVAL: *E.W. Walters*
 ASSISTANT ENGINEER OF BRIDGE DESIGN

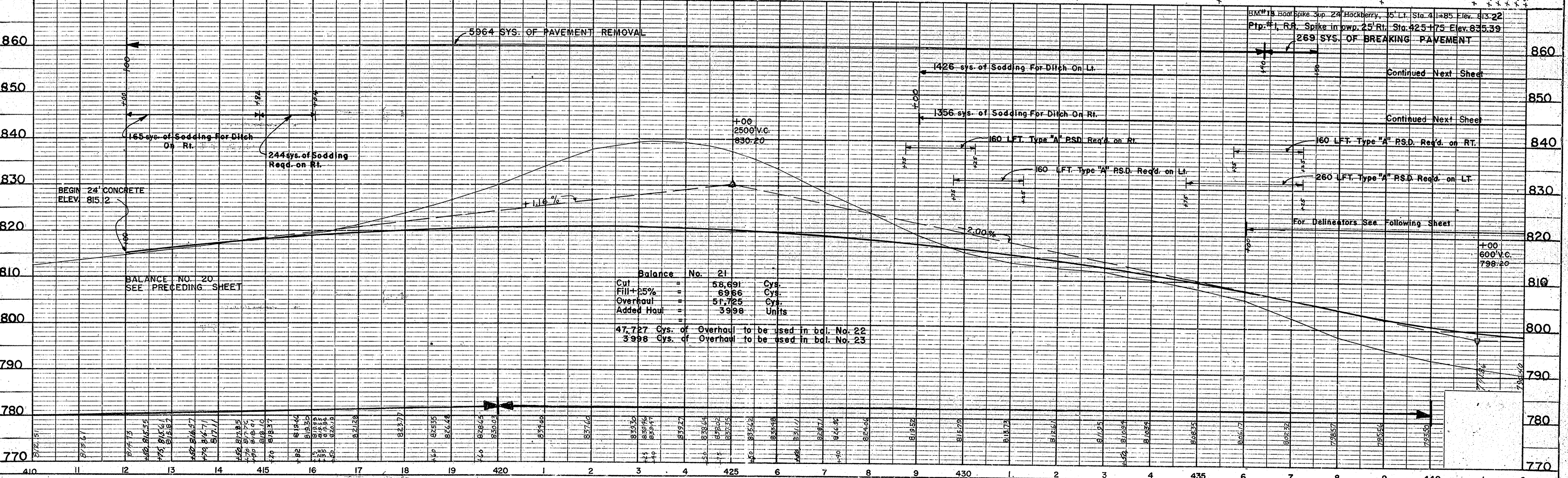
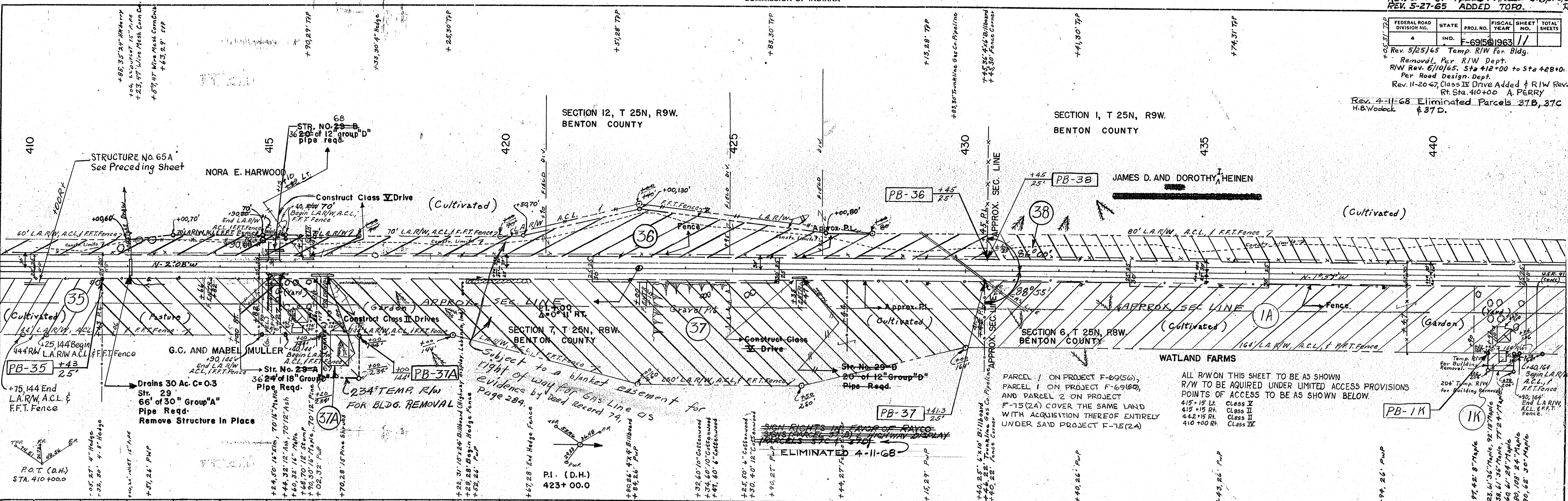
DRAWING: C.I.A OF 6
 PROJECT: ST-F-69-(59)
 CONTRACT NO. R-8182
 BRIDGE FILE: 41-04-5901

E.W. Walters
 REGISTERED ENGINEER
 STATE OF INDIANA

FEDERAL ROAD DIVISION NO.	STATE	PROJ. NO.	FISCAL YEAR	SHEET NO.	TOTAL SHEETS
4	IND.	F-69(56)	1963	11	

Rev. 5/25/65 Temp. R/W For Bldg. Removal, Per R/W Dept.
R/W Rev. 6/10/65. Sta 412+00 to Sta 428+00. Per Road Design Dept.
Rev. 11-20-67, Class II Drive Added & R/W Rev. Rt. Sta. 410+00 A. PERRY
Rev. 4-11-68 Eliminated Parcels 378, 379, 370 & 37 D.
H.B. Woodcock

DATE	BY	REVISION

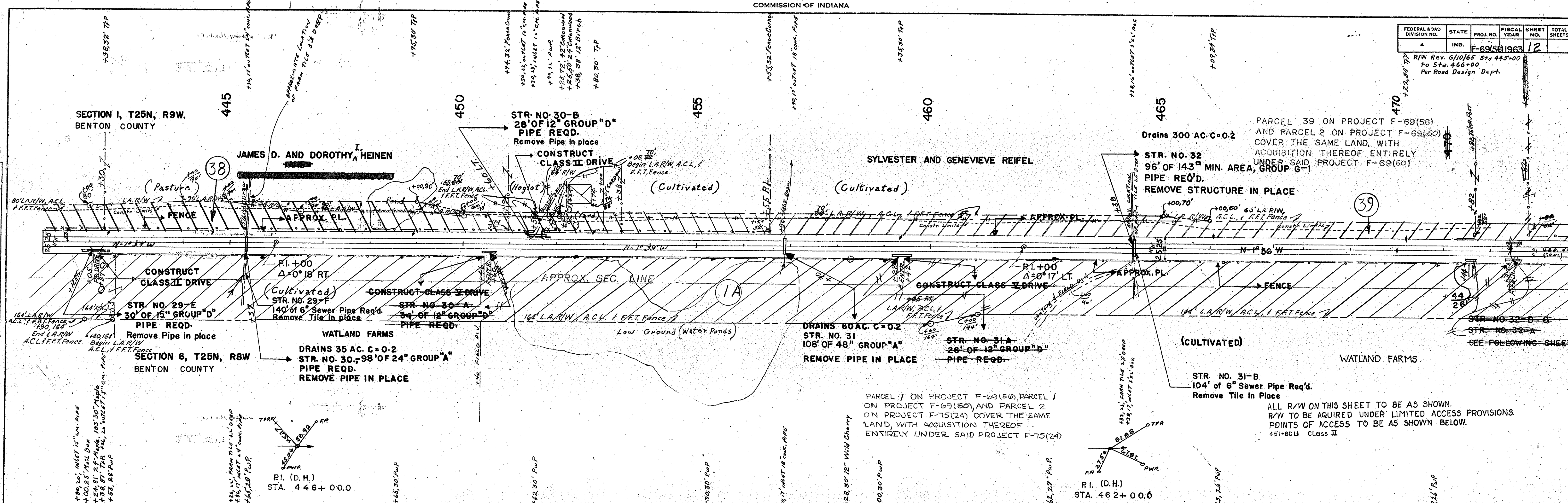


DATE	BY	REVISION

FEDERAL ROAD DIVISION NO.	STATE	PROJ. NO.	FISCAL YEAR	SHEET NO.	TOTAL SHEETS
4	IND.	F-69(56)	1963	12	

R/W Rev. 6/10/65 Sta. 445+00
To Sta. 466+00
Per Road Design Dept.

PLAN	DATE	
BY		
REVISIONS		
NO.	DATE	DESCRIPTION
1		AS SHOWN



PROFILE	DATE	
BY		
REVISIONS		
NO.	DATE	DESCRIPTION
1		AS SHOWN

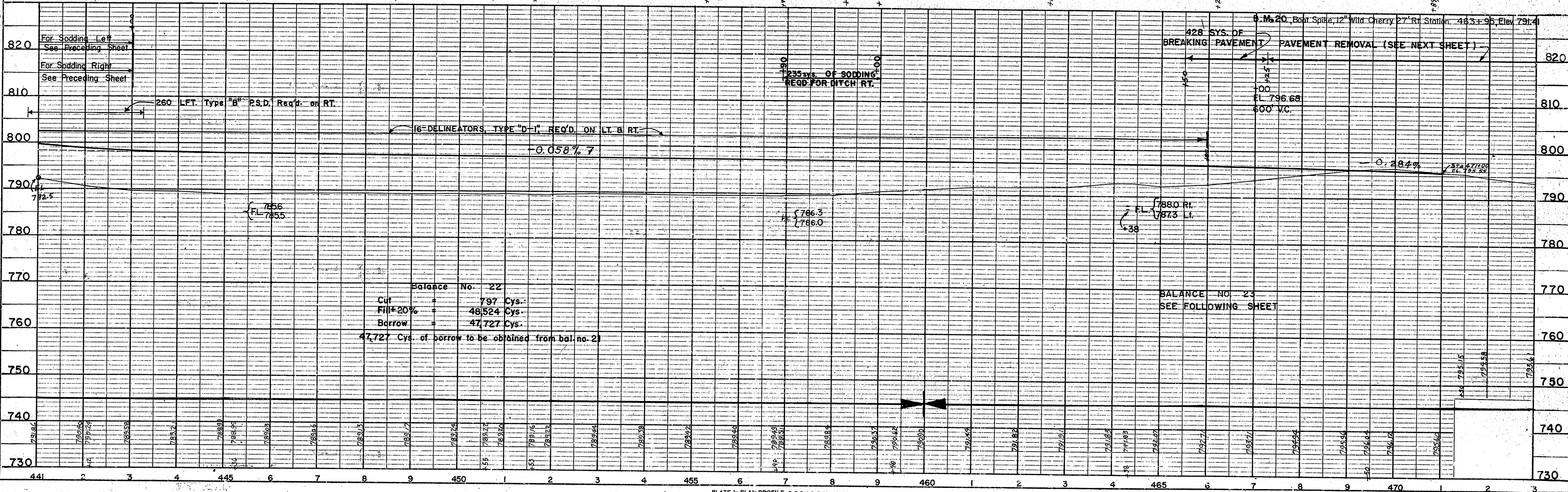


PLATE I-PLAN-PROFILE C.P.R.E.E. STANDARD
THE FREDERICK POST CO., Chicago

PROJ.	LINE	SHEET	FILE
F-69(56)		12	

Sec. 36, T26N, R9W

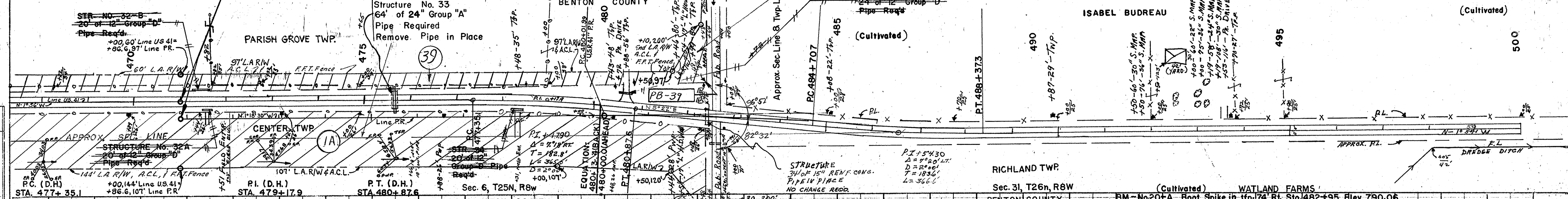
Federal Road	STATE	PROJ. NO.	FISCAL YEAR	SHEET	TOTAL SHTS
Division No. 4	IND.	F 69 (56)	1963	13	

Bearing Equation
 N 1° 56' W Line U.S. 41 (Back) =
 N 1° 18' 30" W Line P.R. (Ahead)

END F-PROJECT NO. 69(54)
 STA. 471+000 LINE U.S. 41 =
 STA. 470+86.6 LINE P.R. (37'R)
 BEGIN F-PROJECT NO. 69(54)

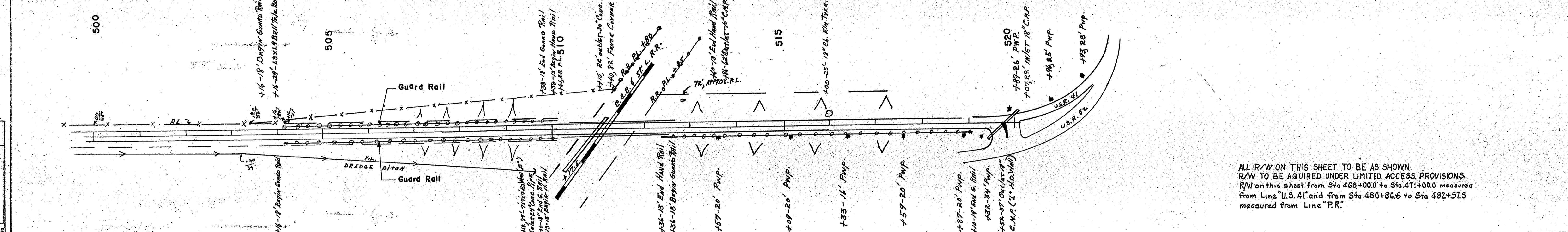
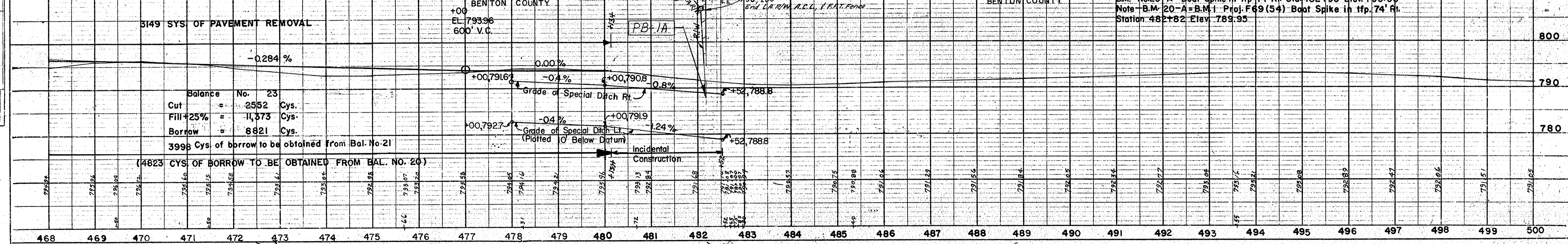
PARCEL 1 ON PROJECT F-69(56), PARCEL 2 ON PROJECT F-69(56), AND PARCEL 3 ON PROJECT F-75(2A) COVER THE SAME LAND, WITH ACQUISITION THEREOF ENTIRELY UNDER SAID PROJECT F-75(2A)

PARCEL 39 ON PROJECT F-69(56) AND PARCEL 2 ON PROJECT F-69(56) COVER THE SAME LAND, WITH ACQUISITION THEREOF ENTIRELY UNDER SAID PROJECT F-69(56)



3149 SYS OF PAVEMENT REMOVAL

Balance No. 23
 Cut +25% = 2552 Cys.
 Borrow = 11,373 Cys.
 Borrow = 8821 Cys.
 3998 Cys. of borrow to be obtained from Bal. No. 21
 (4823 CYS OF BORROW TO BE OBTAINED FROM BAL. NO. 20)



ALL R/W ON THIS SHEET TO BE AS SHOWN.
 R/W TO BE ACQUIRED UNDER LIMITED ACCESS PROVISIONS.
 R/W on this sheet from Sta 468+00.0 to Sta 471+00.0 measured from Line U.S. 41 and from Sta 480+86.6 to Sta 482+57.5 measured from Line "P.R."

PLAN
 SURVEYED
 PLOTTED
 CHECKED
 NOTE BOOK
 NO.

PROFILE
 SURVEYED
 PLOTTED
 CHECKED
 NOTE BOOK
 NO.

APPROACH TABLE

FEDERAL ROAD REGION NO.	STATE	PROJECT NO.	FISCAL YEAR	SHEET NO.	TOTAL SHEETS
4	IND.	F-69(56)	1966	14	

Drives added Rev. 10-13-66 Per R/W Dept. and Road Design
 Rev. 11-20-67, Drives moved to 59+65 R+Lt. Drive added @ 410+00 Rt. A.PERRY

LOCATION	DESCRIPTION	CUT		FILL		WIDTH FT.	RADIUS FT.	LENGTH FT.	GRADE LESS THAN 1% DISTANCE BEYOND R/W LINE	BITUMINOUS MIXTURE FOR APPROACHES SQ.YDS.	COMPACTED AGGREGATE BASE SQ. YDS.			GUIDE POST TYPE "B"
		CYS.	CYS.	3"	5"						8"			
* 25+32 Lt.	CLASS II	3		12		15'-20'	28			58.6				
22+45 Lt.	CLASS IV	10		20		20'-20'	28			81.3		81.3		6
24+00 Lt.	CLASS IV	29 ¹⁰		36 ¹⁰		20'-20'	48 ²⁸			178.9		81.3	178.9	6
31+95 Rt.	CLASS V	24		24		15'-25'	132							
31+95 Lt.	CLASS II	5		24		15'-25'	48			147.2		147.2		
41+75 Rt.	CLASS II	35		24		15'-25'	132			371.1		371.2		
49+75 Lt.	CLASS II	5		24		15'-25'	48			147.2				
59+65 60+49 Rt.	CLASS V	41		24		15'-25'	132							
59+65 60+49 Lt.	CLASS II	3		24		15'-25'	48			147.2		147.2		
73+50 Rt.	CLASS II	24		24		15'-25'	132			371.1		371.1		
73+50 Lt.	CLASS II	5		24		15'-25'	48			147.2		147.2		
83+85 Rt.	CLASS V	23		24		15'-25'	132							
83+85 Lt.	CLASS II	3		24		15'-25'	48			147.2	78.9	147.2	78.9	
84+01 Rt.	CLASS II	3		13		25'	48			78.9		78.9		
92+90 Rt.	CLASS II	21		24		15'-25'	132			371.1		371.1		
101+75 Lt.	CLASS II	5		24		15'-25'	48			147.2		147.2		
105+80 Rt.	CLASS II	23		24		15'-25'	132			371.1		371.1		
116+40 Rt.	TYPE "B"	54		20		38.0'	60			244.0			244.0	
116+40 Lt.	TYPE "B"	54		20		38.0'	60			244.0			244.0	
116+60, 210' Rt.	CLASS V	2		24		15'-25'	8							
168+45, 210' Rt.	CLASS V	1		24		15'-25'	10							
168+60 Rt.	TYPE "B"	54		20		38.0'	60			244.0			244.0	
168+60 Lt.	TYPE "B"	54		20		38.0'	60			244.0			244.0	
168+75, 210' Rt.	CLASS V	1		24		15'-25'	14							
168+75, 210' Lt.	CLASS V	5		24		15'-25'	10							
208+80 Rt.	CLASS II	24		24		15'-25'	132			371.1		371.1		
221+50 Lt.	TYPE "B"	54		20		38.0'	60			244.0			244.0	
221+65 Rt.	TYPE "B"	54		20		38.0'	60			244.0			244.0	
221+87, 210' Rt.	CLASS II	5		24		15'-25'	22			77.8		77.8		
274+82 Rt.	TYPE "B"	54		20		38.0'	60			244.0			244.0	
274+82 Lt.	TYPE "B"	54		20		38.0'	60			244.0			244.0	
312+70 Rt.	CLASS V	30		24		15'-25'	132							
312+70 Lt.	CLASS II	6		24		15'-25'	48			147.2		147.2		
327+12 Rt.	TYPE "B"	54		20		38.0'	60			244.0			244.0	
327+27, 210' Rt.	CLASS V	5		24		15'-25'	10							
346+00 Rt.	CLASS II	12		24		15'-25'	132			371.1		371.1		
346+00 Lt.	CLASS V	100		24		15'-25'	74							
365+50 Lt.	CLASS II	10		24		15'-25'	48			147.2		147.2		
380+00 Rt.	SR 18, TYPE "B"													
380+00 Lt.	SR 18, TYPE "B"													
385+75 Rt.	CLASS II	12		24		15'-25'	132			371.1		371.1		
385+75 Lt.	CLASS II	12		24		15'-25'	48			147.2		147.2		
415+15 Rt.	CLASS II	12		24		15'-25'	132			371.1		371.1		
415+15 Lt.	CLASS V	10		24		15'-25'	58							
442+15 Rt.	CLASS II	194		24		15'-25'	152			371.1		371.1		
451+80 Lt.	CLASS II	102		24		15'-25'	58			147.2		147.2		
410+00 Rt.	CLASS IV	10		30'		20'-20'	132			359.4		359.4		6

* Indicates Out of Order

UNTS 2-11-66



Begin F-Project No. 69(56) Sta 26+77.5 (5)

ABOLT, MARION S.
110-202 Ac.
RES. A

RIGHT-OF-WAY PLAT #3
PROJECT: F-69(56)
MOSAIC SCALE 1"=400' SHEET 1 OF 7
DATE OF PHOTOGRAPHY:
SOURCE: UNCONTROLLED PHOTO MOSAIC
INDIANA STATE HIGHWAY COMMISSION
BUREAU OF PHOTOGRAMMETRIC & ELECTRONIC PROCESSES

LEUCK, ETHEL M.
240A

GOODWIN

RES.
105

GO EAST
LEFT PENCE

16

RES. A

16

RES.

MEDIA

10

GOODWIN, JAMES MALCOMB

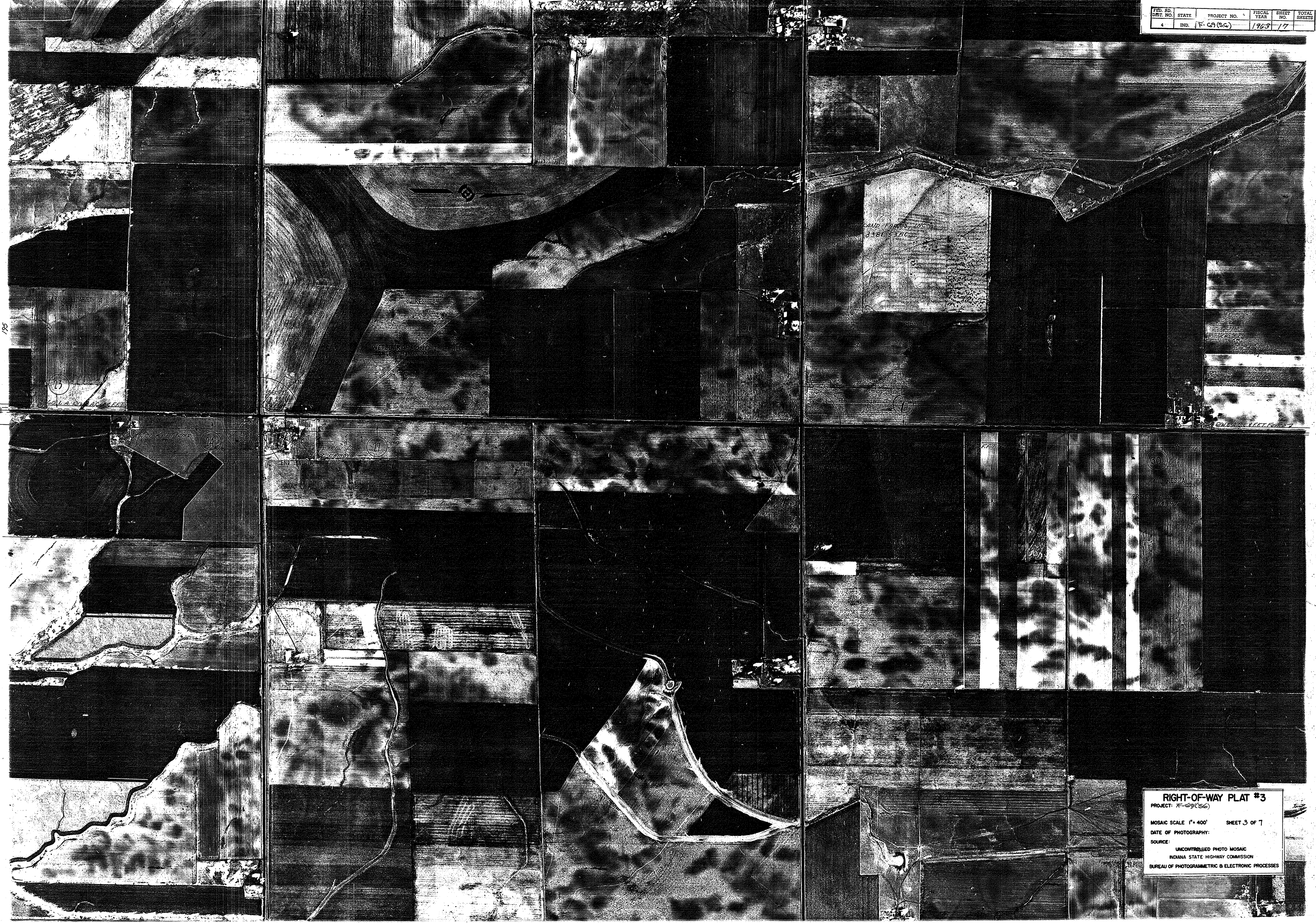
BLAYLOCK, CLAYTON FRANKLIN

14

GOODWIN, JAMES MALCOMB

RIGHT-OF-WAY PLAT #3
PROJECT F-69 (56)
MOSAIC SCALE 1" = 400' SHEET 2 OF 7
DATE OF PHOTOGRAPHY: -
SOURCE: UNCONTROLLED PHOTO MOSAIC
INDIANA STATE HIGHWAY COMMISSION
BUREAU OF PHOTOGRAMMETRIC & ELECTRONIC PROCESSES

FED. RD. DIST. NO.	STATE	PROJECT NO.	FISCAL YEAR	SHEET NO.	TOTAL SHEETS
4	IND.	F-69(S6)	1963	17	





DATA
 PI = STA. 378+10.10
 $\Delta I = 7^{\circ}44'17''$
 D = 1230
 R = 3819
 L = 515.56
 E = 288.17
 S = 8.72'

RES. A

RES. B

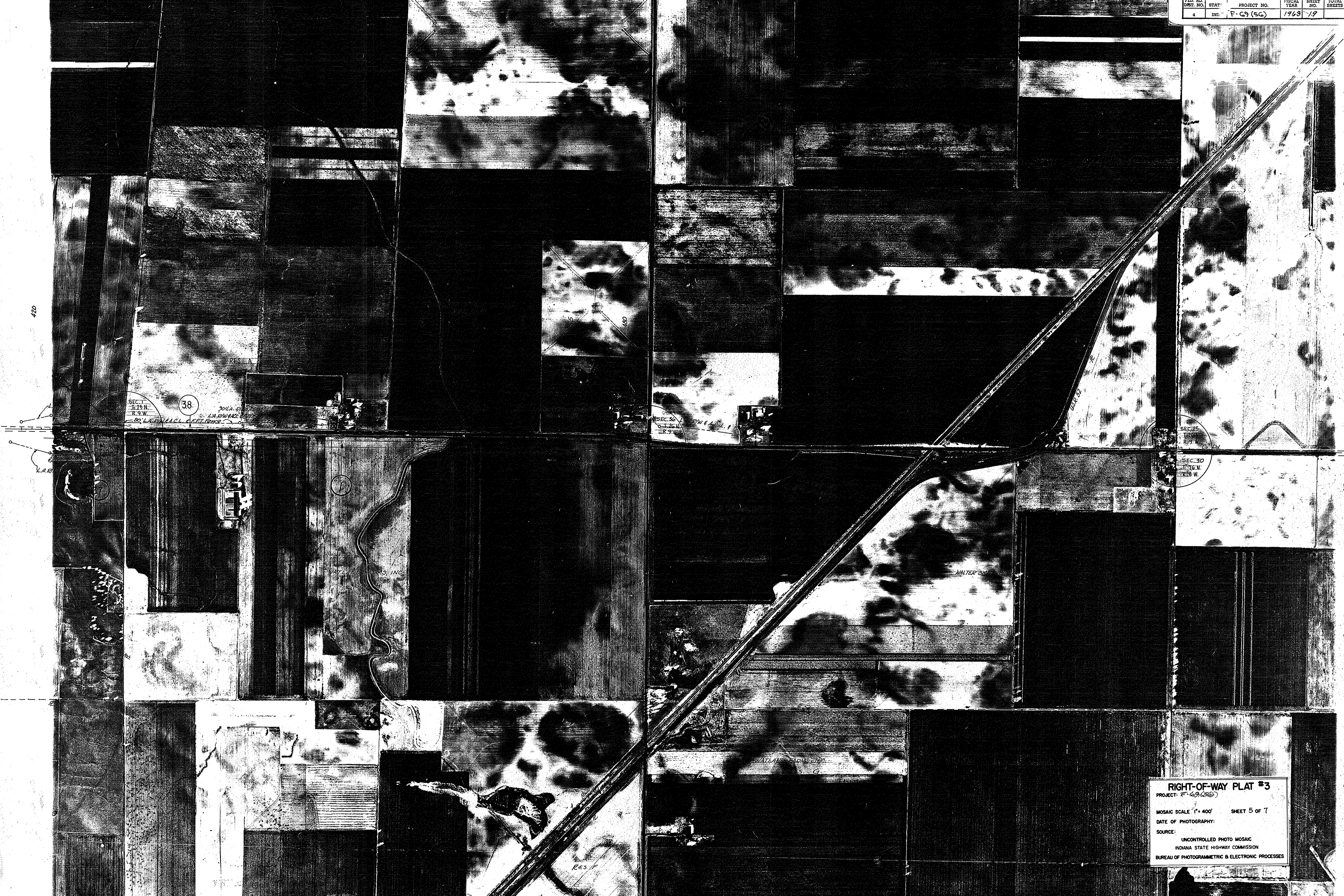
RES. C

38

SEC. 1
 T45N
 R9W

PT. 1 - STA. 388+0.00

RIGHT-OF-WAY PLAT #3
 PROJECT: F-69(56)
 MOSAIC SCALE 1" = 400' SHEET 4 OF 7
 DATE OF PHOTOGRAPHY: _____
 SOURCE:
 UNCONTROLLED PHOTO MOSAIC
 INDIANA STATE HIGHWAY COMMISSION
 BUREAU OF PHOTOGRAMMETRIC & ELECTRONIC PROCESSES



RIGHT-OF-WAY PLAT #3
 PROJECT: F-69 (56)
 MOSAIC SCALE: 1" = 400' SHEET 5 OF 7
 DATE OF PHOTOGRAPHY:
 SOURCE: UNCONTROLLED PHOTO MOSAIC
 INDIANA STATE HIGHWAY COMMISSION
 BUREAU OF PHOTOGRAMMETRIC & ELECTRONIC PROCESSES