

INDEX

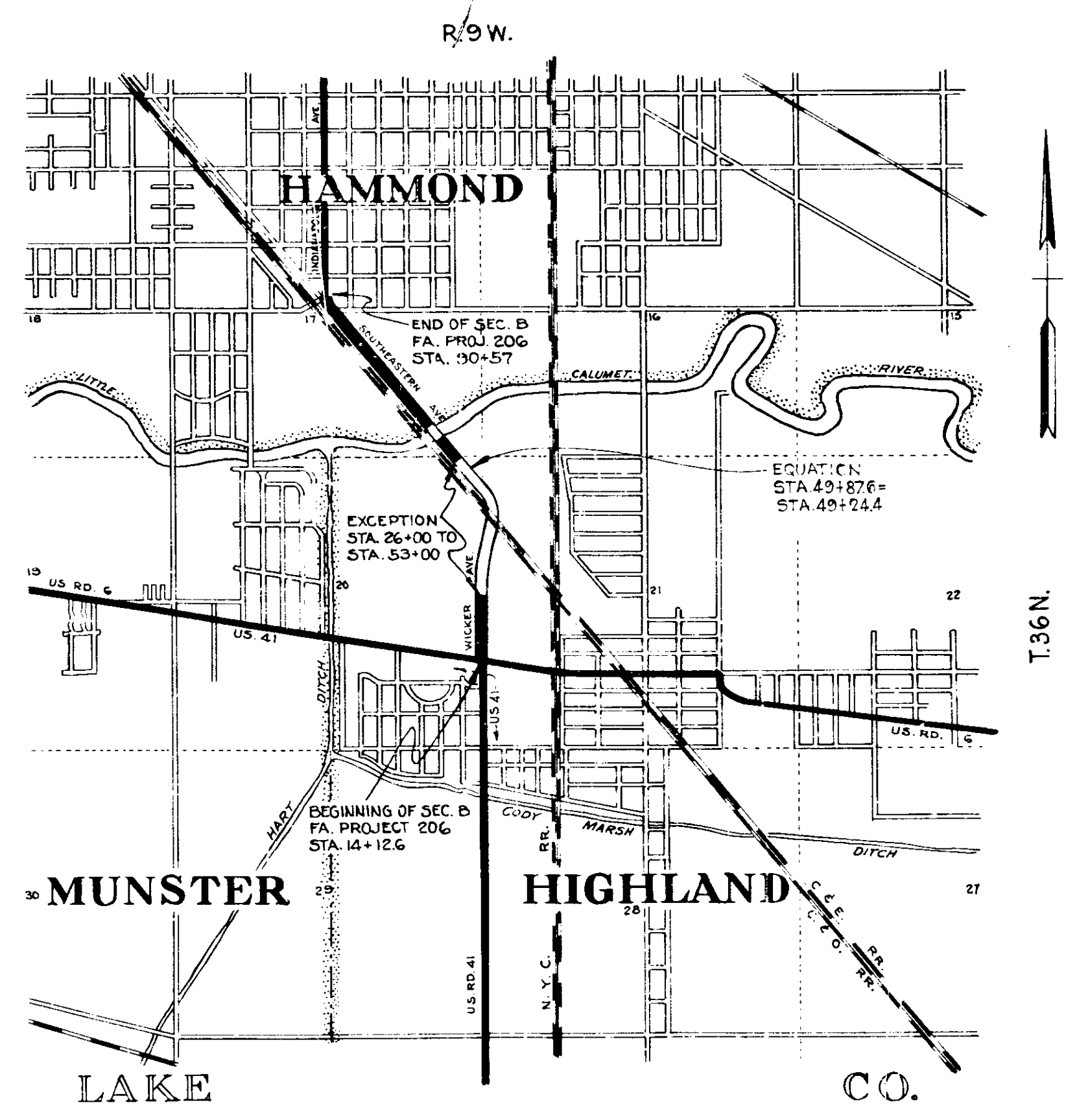
SHEET NO.	1	TITLE SHEET.
SHEET NO.	2-3	TYPICAL CROSS SECTIONS.
SHEET NO.	4	STD. EXPANSION JOINTS. REV. FEB. 13, 1937.
SHEET NO.	5-6	STD. PAVEMENT JOINTS. SHEET NO. 5 REV. FEB. 27, 1937. SHEET NO. 6 FEB. 1937.
SHEET NO.	7-8	PLAN AND PROFILE.
SHEET NO.	14	BRIDGE AND CULVERT DATA - ESTIMATE OF QUANTITIES.
SHEET NO.	15-18A	MISCELLANEOUS STANDARDS. SHEET A REV. FEB. 1935 ~ SHEET B REV. MARCH 9, 1937.
SHEET NO.	16-17	MISCELLANEOUS STANDARDS. SHEET C REV. MAY 9, 1935 SHEET D REV. MAY 23, 1936.
SHEET NO.		STD. REINF. CONC. BOX CULVERT.
SHEET NO.		STD. REINF. CONC. CULV.—SLAB TOP TYPE WITHOUT FILL (10'-0" TO 15'-0" SPAN).
SHEET NO.		STD. REINF. CONC. CULV.—SLAB TOP TYPE UNDER FILL (4'-0" TO 5'-0" (10'-0" TO 20'-0" SPAN).
SHEET NO.		STD. REINF. CONC. CULV.—SLAB AND GIRDER WITHOUT FILL (20'-0" SPAN).
SHEET NO.		STD. REINF. CONC. CULV.—SLAB TOP TYPE WITHOUT FILL (10'-0" TO 20'-0" SPAN) 15' SKEW.
SHEET NO.		STD. REINF. CONC. CULV.—SLAB TOP TYPE UNDER FILL (4'-0" TO 5'-0" (10'-0" TO 20'-0" SPAN) 15' SKEW.
SHEET NO.		STD. REINF. CONC. CULV.—SLAB TOP TYPE WITHOUT FILL (10'-0" TO 20'-0" SPAN) 30' SKEW.
SHEET NO.		STD. REINF. CONC. CULV.—SLAB TOP TYPE UNDER FILL (4'-0" TO 5'-0" (10'-0" TO 20'-0" SPAN) 30' SKEW.
SHEET NO.		STD. REINF. CONC. CULV.—SLAB TOP TYPE WITHOUT FILL (10'-0" TO 20'-0" SPAN) 45' SKEW.
SHEET NO.		STD. REINF. CONC. CULV.—SLAB TOP TYPE UNDER FILL (4'-0" TO 5'-0" (10'-0" TO 20'-0" SPAN) 45' SKEW.
SHEET NO.		STD. REINF. CONC. CULV.—SLAB TOP TYPE (15'-0" TO 19'-0" SPAN) GRAVITY TYPE.
SHEET NO.	18	STD. FLEXIBLE STEEL PLATE GUARD RAIL. ADOPTED MAY 1935.
SHEET NO.		STD. RAILROAD GRADE CROSSING.
SHEET NO.		
SHEET NO.		
SHEET NO.		
SHEET NO.		
SHEET NO.		
SHEET NO.		
SHEET NO.		
SHEET NO.	19	STD. PLAN FOR FILLING IN PEAT MARSHES.
SHEET NO.		DATA FOR SUPPL. ELEVATING AND WIDENING OF CURVES.
SHEET NO.		STD. DETOUR SIGNS. MARCH 1936.
SHEET NO.	20-30	CROSS SECTIONS.

STATE OF INDIANA STATE HIGHWAY COMMISSION

PLAN AND PROFILE OF PROPOSED STATE HIGHWAY FA. PROJECT NO. 206 SEC. B (1938)

BEGINNING ON WICKER AVE. (S.R. 152) IN HIGHLAND, LAKE COUNTY AT A POINT ON THE SOUTH EDGE OF THE PAVEMENT OF U.S. 6 AND EXTENDING IN A NORTHWESTERLY DIRECTION TO A POINT ON INDIANAPOLIS AVENUE AT ITS INTERSECTION WITH SOUTHEASTERN AVE. IN HAMMOND, LAKE COUNTY APPROX. 7,644.4 FT. FROM THE POINT OF BEGINNING.

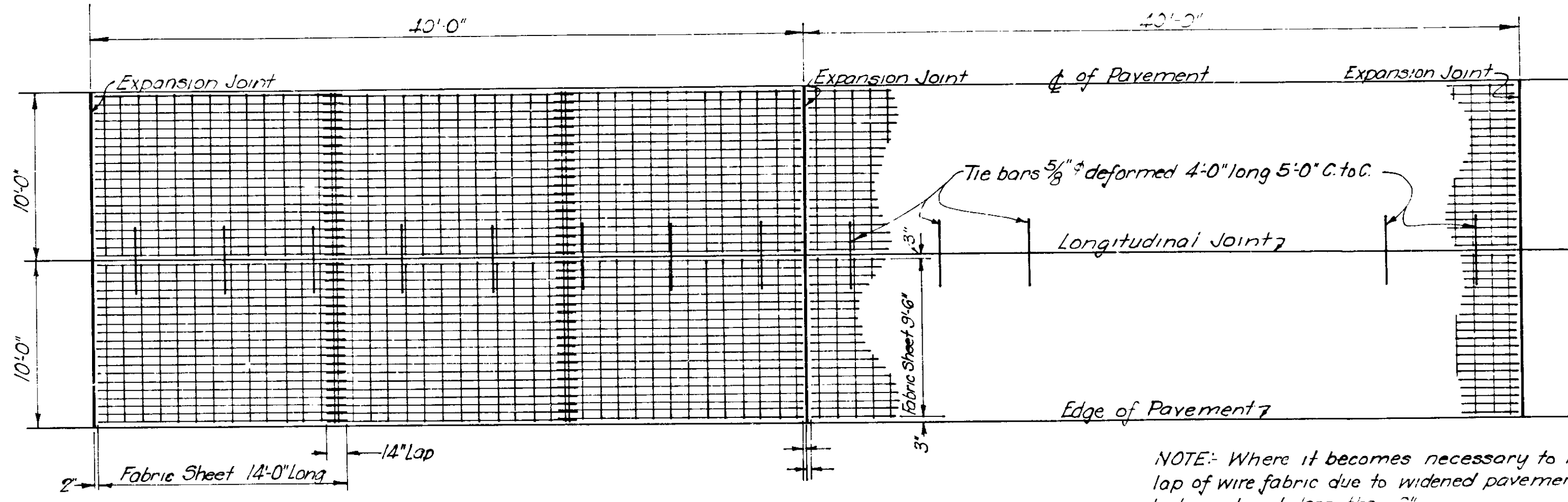
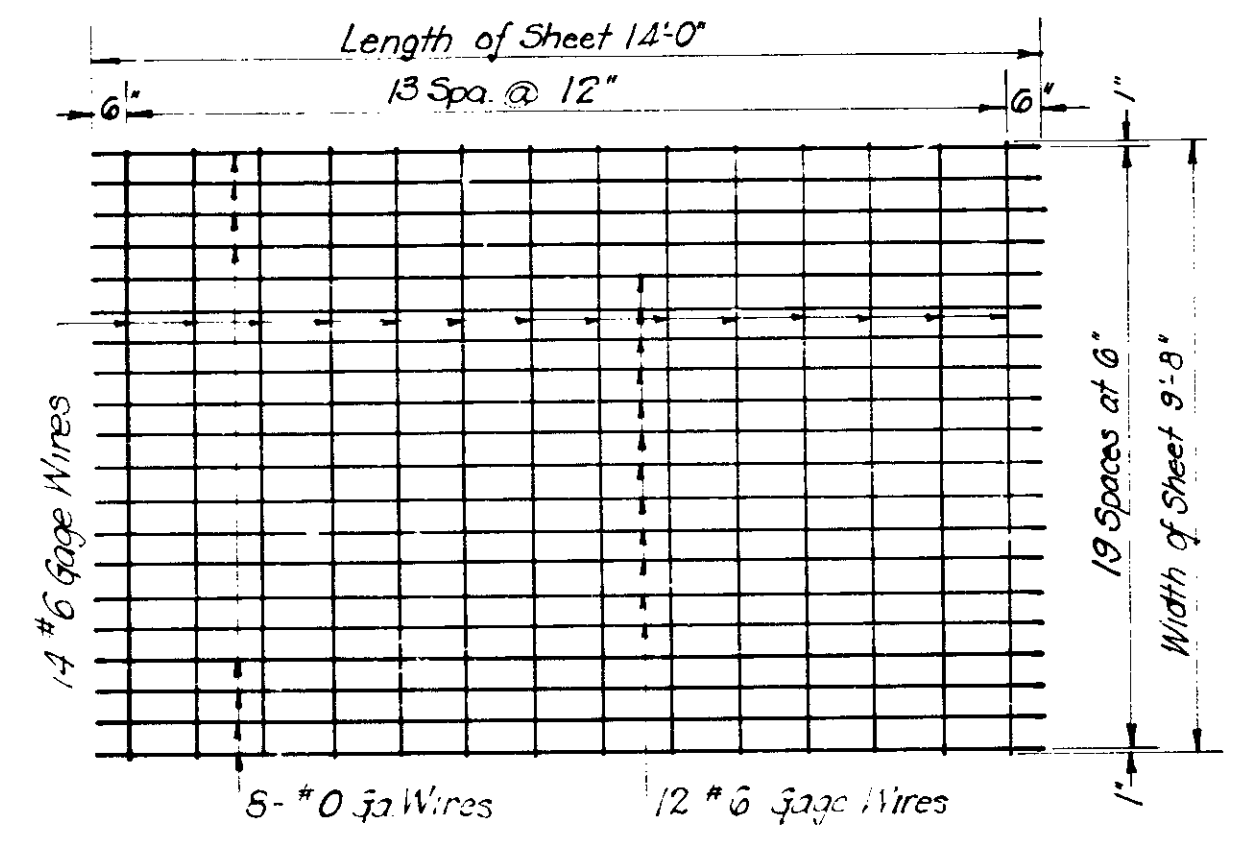
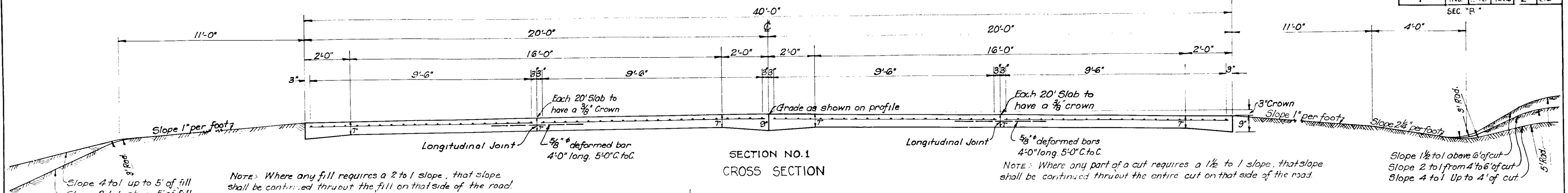
GROSS LENGTH: 1.459 MI.
NET LENGTH: 0.903 MI.
SCALES:
PLAN LONG: 1" = 50'
TRANS: 1" = 50'
PROFILE HORIZ: 1" = 50'
VERT: 1" = 10'
MAX. GRADE 1.713 %



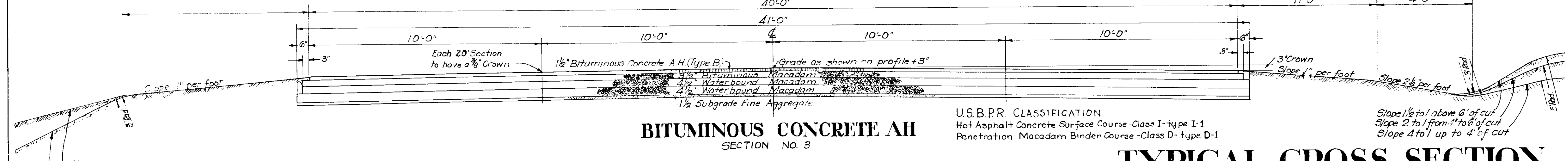
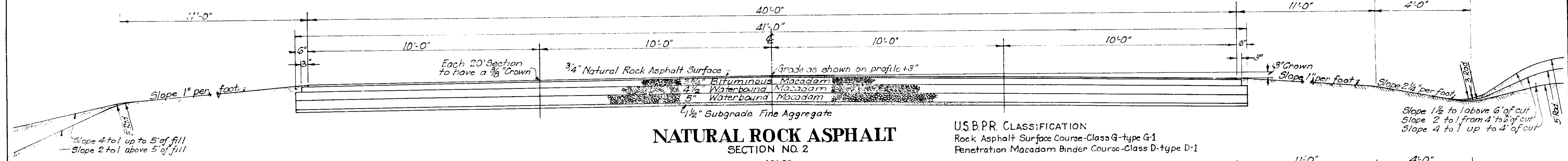
STATE HIGHWAY COMMISSION OF INDIANA.
STANDARD SPECIFICATIONS FOR ROAD CONSTRUCTION DATED MARCH 1935 AND SUPPLEMENT DATED
JUNE 1936. ON FILE WITH U. S. BUREAU OF PUBLIC
ROADS TO BE USED WITH THESE PLANS.

APPROVED AND ADOPTED 3-23-37
BY STATE HIGHWAY COMMISSION OF INDIANA
E. C. Campbell
APPROVED 3-23-37
M. Keefe
RECOMMENDED FOR APPROVAL
RECOMMENDED FOR APPROVAL
APPROVED

FEDERAL ROAD DISTRICT NO.	STATE	F.A. PROJ. NO.	FISCAL YEAR	SHEET NO.	TOTAL SHEETS
7	IND.	008	1936	2	39



REINFORCED CONCRETE PAVEMENT



SECTION NO. 1, 2 and 3 to be used between sta. 14+12.6 and 65+88

TYPICAL CROSS SECTION

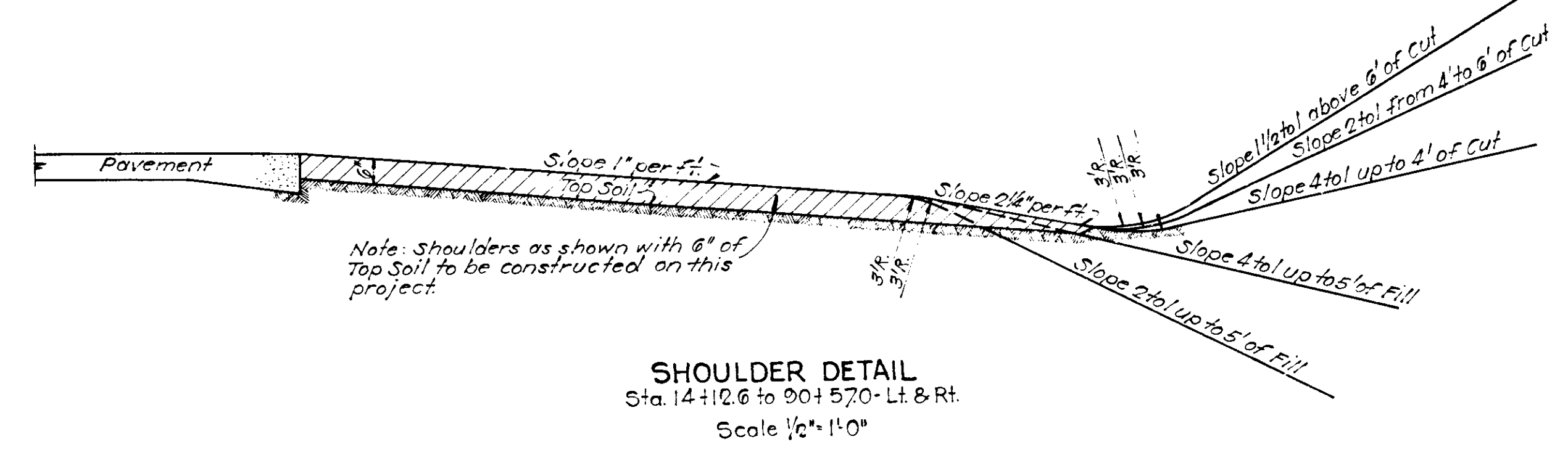
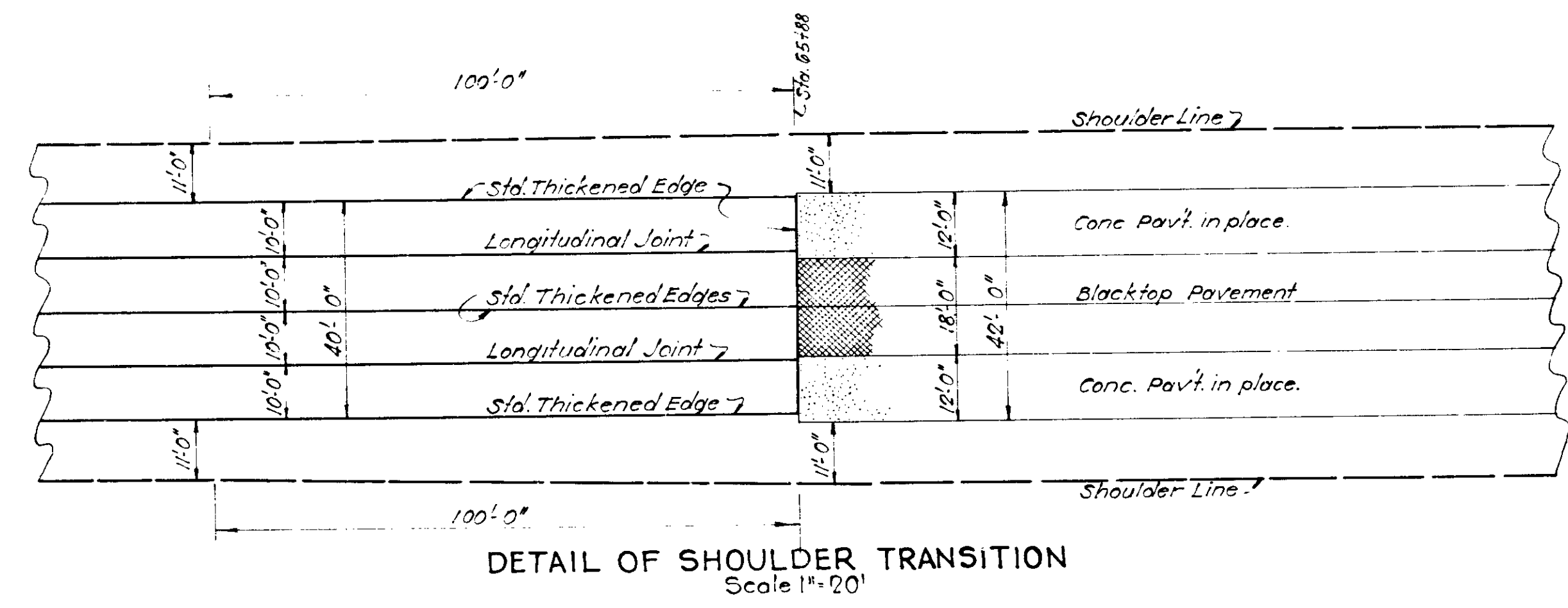
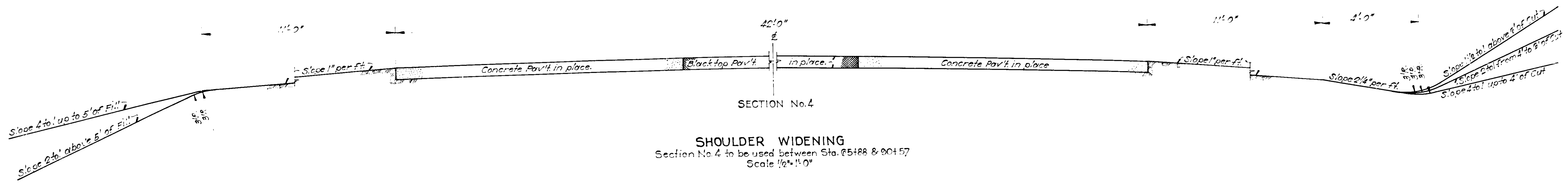
Scale $\frac{1}{2}$ " = 1'-0"

APPROVED: *Earl C. ...*
CHAIRMAN - STATE HIGHWAY COMMISSION OF INDIANA

APPROVED: *...*
CHIEF ENGINEER - STATE HIGHWAY COMMISSION OF INDIANA

FEDERAL ROAD DISTRICT No.	STATE	FED AID PROJ. No.	FISCAL YEAR	SHEET No.	TOTAL SHEETS
7	IND	206	1930	3	30

SECTION - "B"

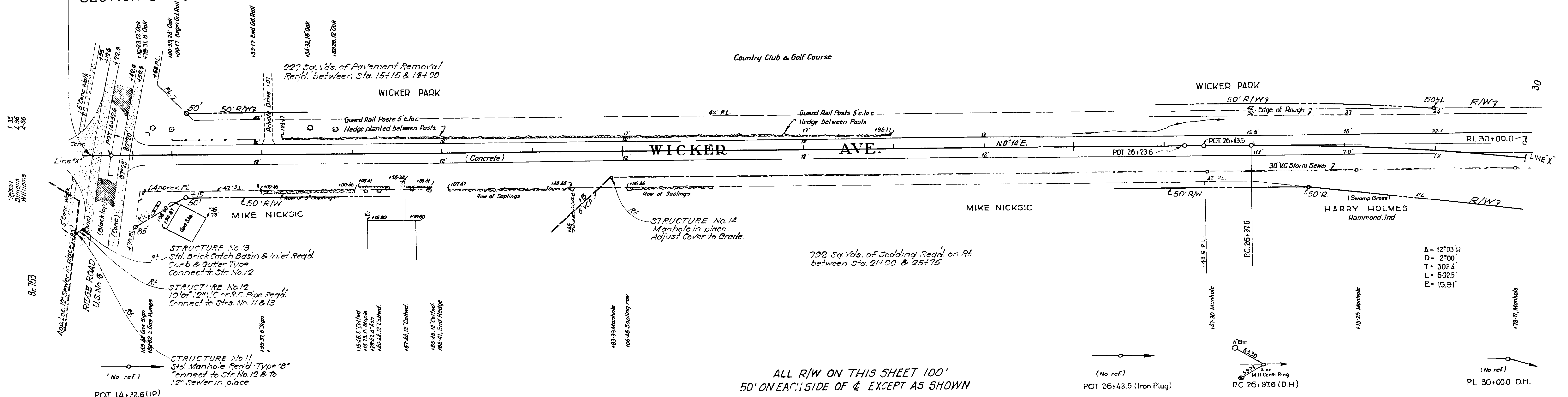


FED. ROAD DIST. NO.	STATE	FISCAL YEAR	SHEET NO.	TOTAL SHEETS
7	IND	206	1936	7

Section: "B"

BEGINNING OF F.A. PROJ. No. 206
SECTION "B" ~ STA. 14+12.6

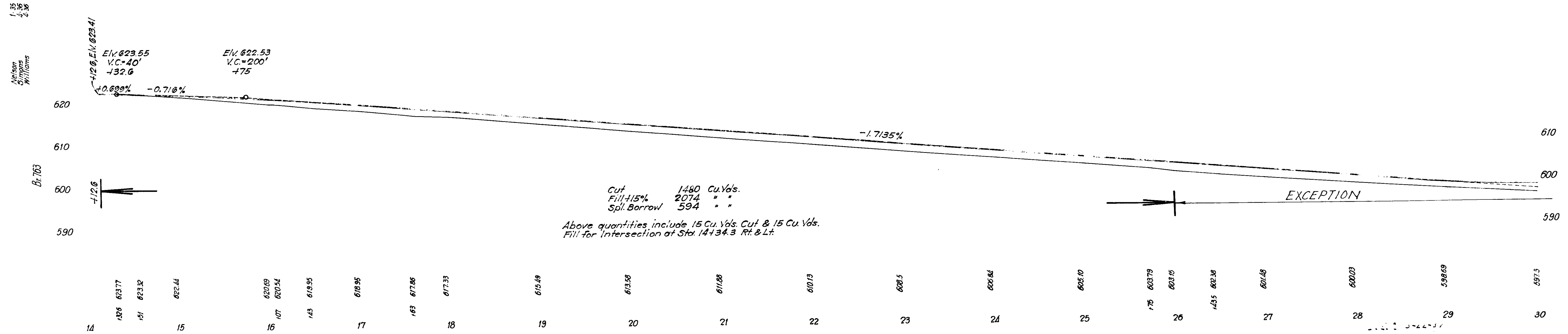
For Detail of Intersection at Sta. 14+32.6 See Sheet No. 13



ALL R/W ON THIS SHEET 100'
50' ON EACH SIDE OF & EXCEPT AS SHOWN

TYPICAL CROSS SECTIONS AS SHOWN ON SHEET Nos. 2 & 3
TO BE USED ON THIS PROJECT.

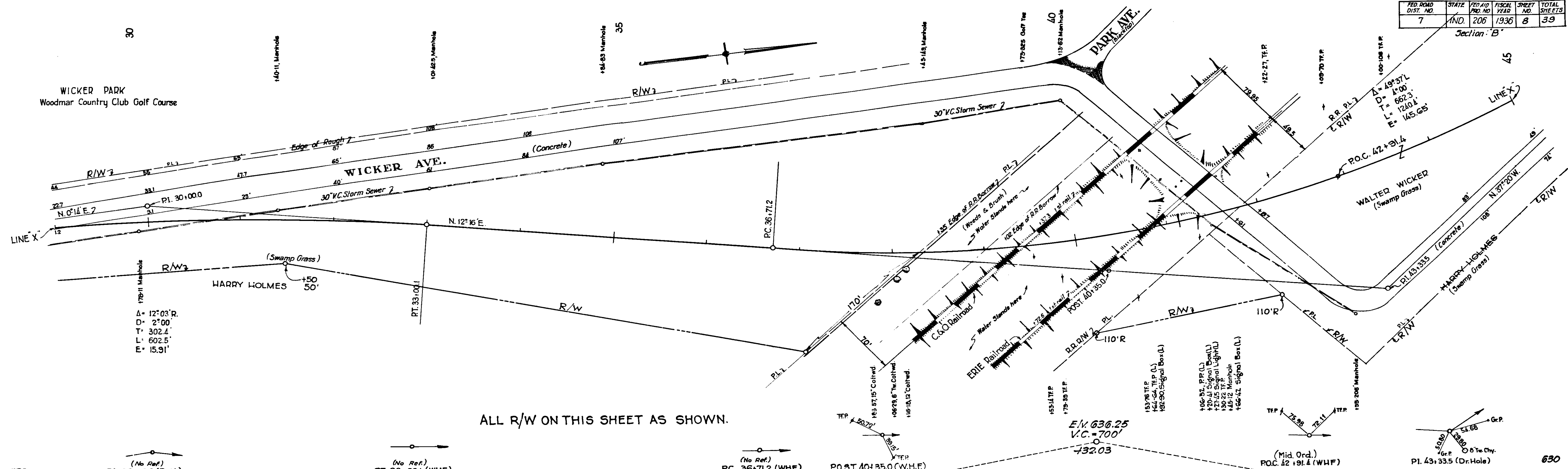
State Highway Commission of Indiana Std. Specifications for Road Construction dated March 1935 & Supplement dated June 1936 to be used with these plans.
Standards under dates as listed in Index on Title Sheet, to be used on this project.
Grade Line represents top of Finished Reinforced Concrete Pavement.
Grade to be raised 3" for Rock Asphalt or Bituminous Concrete Pavements.



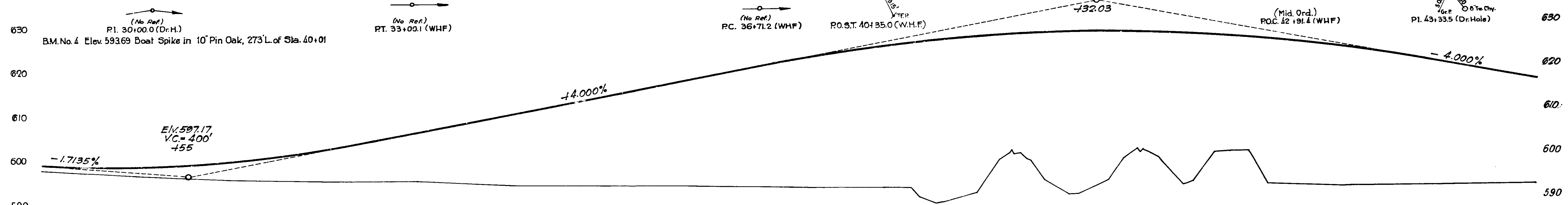
FED. ROAD DIST. NO.	STATE	FED. AID PROJ. NO.	FISCAL YEAR	SHEET NO.	TOTAL SHEETS
7	IND.	206	1936	8	39

Section 'B'

WICKER PARK
Woodmar Country Club Golf Course



ALL R/W ON THIS SHEET AS SHOWN.



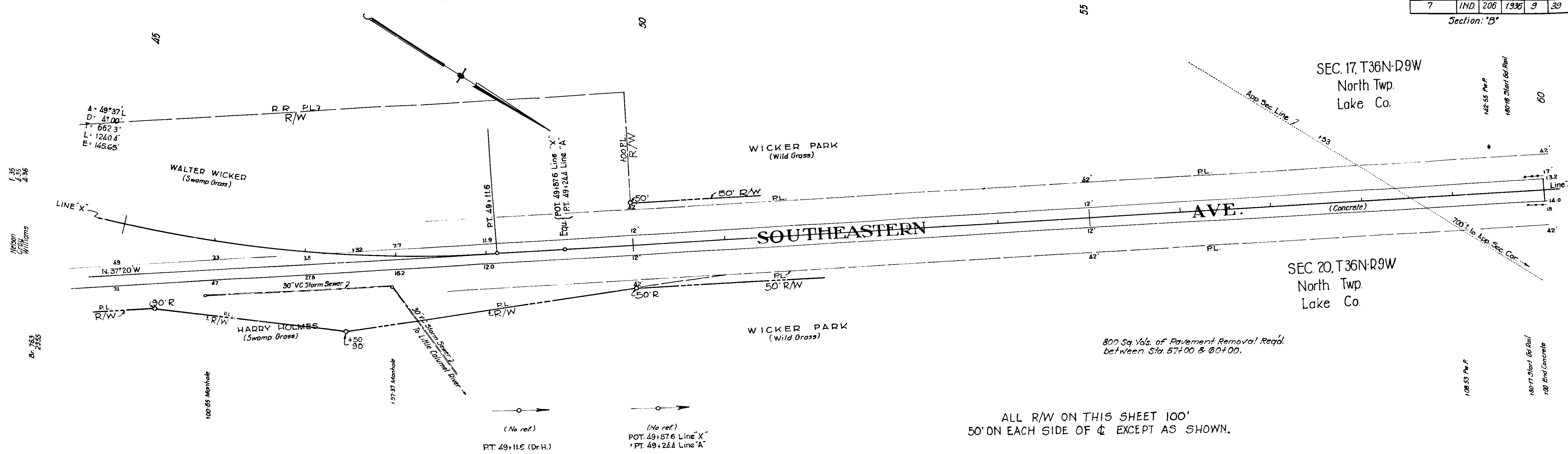
EXCEPTION

596.69	597.3	596.3	595.9	595.7	594.8	594.5	594.2	593.9	593.7	593.6	593.5	593.0	592.2	592.0	591.2	590.5	590.2	590.1	590.1	590.0	589.9	589.8	589.8	589.3	589.2	589.1
9	30	1	2	3	4	35	6	7	8	9	40	1	2	3	4	45										

C.P. 3-22-37

FED. ROAD DIST. NO.	STATE	FED. AID PRO. NO.	FISCAL YEAR	SHEET NO.	TOTAL SHEETS
7	IND.	206	1936	9	39

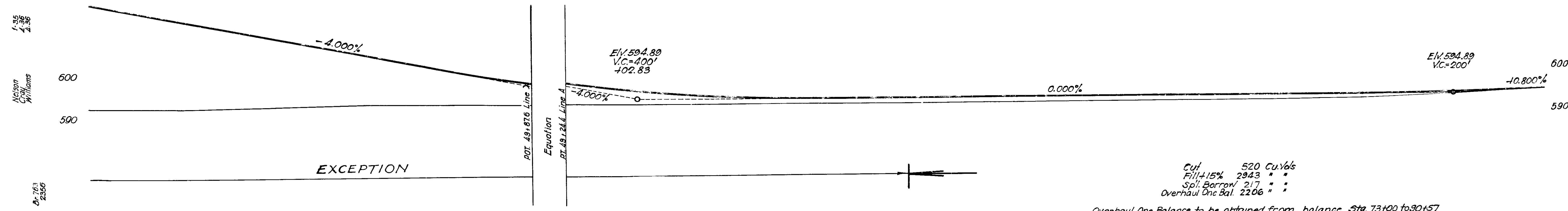
Section: "B"



800 Sq Yds. of Pavement Removal Req'd. between Sta. 57+00 & 60+00.

ALL R/W ON THIS SHEET 100' 50' ON EACH SIDE OF C EXCEPT AS SHOWN.

B.M. No. 5 X Elev. 593.75 Boat Spike in T.P. [161' Lt. of Sta. 45+90 'X'
 B.M. No. 5 A Elev. 593.75 " " " [85' Lt. of Sta. 45+20 'A'



Cut 520 Cu. Yds
 Fill +15% 2943 " "
 Spl. Borrow 217 " "
 Overhaul One Bal. 2206 " "

Overhaul One Balance to be obtained from balance Sta. 73+00 to 90+57

Station	Elevation
45	593.1
46	592.9
47	593.4
48	593.7
49	593.73
49+87.6	593.89
50	593.58
51	593.63
52	593.64
53	593.59
54	593.59
55	593.59
56	593.60
57	593.70
58	593.88
59	594.59
60	595.57

FED. ROAD DIST. NO.	STATE	FED. AID PRO. NO.	FISCAL YEAR	SHEET NO.	TOTAL SHEETS
7	IND	206	1936	10	39

Section: 'B'

See preceding sheet for Pavement Removal between Sta. 57+00 and 60+00

3628 Lbs of Special Reinforcing Steel Req'd for Structure over Little Calumet River.

HAMMOND

Between $\frac{1}{2}$ of River & Sta. 65 there are 7-8" to 14" Ash, Willow & Poplar, within 50' of $\frac{1}{2}$ on L.

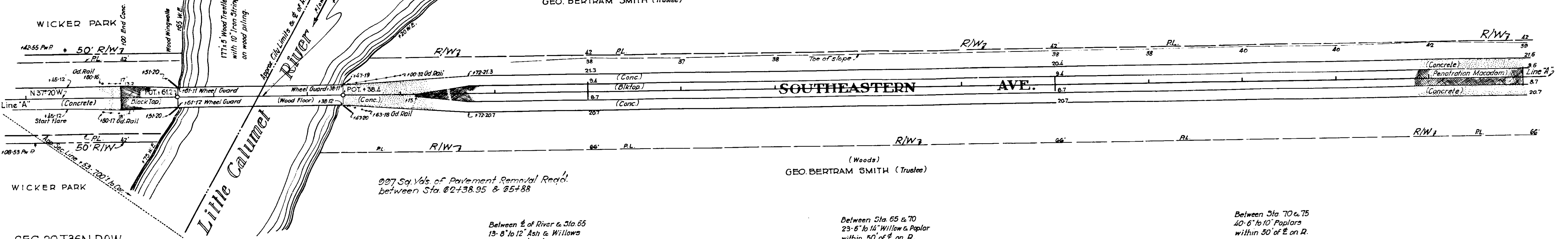
Between Sta. 65 & 70 40-4" to 12" Willow & Poplar within 50' of $\frac{1}{2}$ on L.

Between Sta. 70 & 75 55-6" to 10" Poplars within 50' of $\frac{1}{2}$ on L.

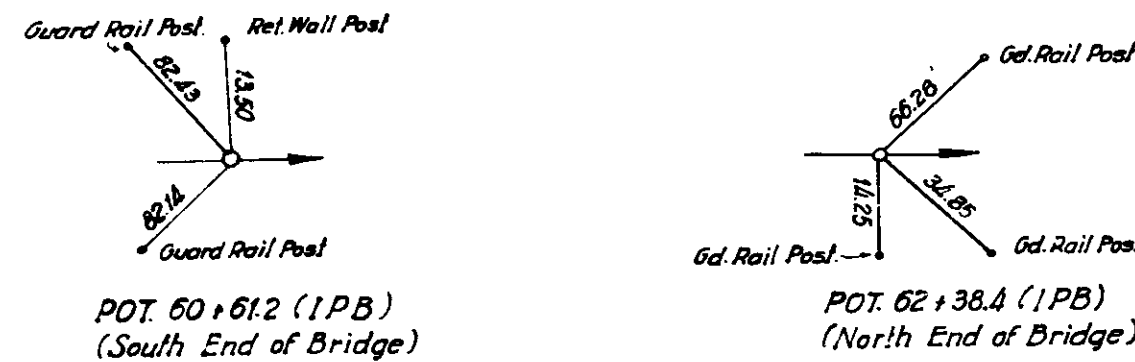
(Woods)
GEO. BERTRAM SMITH (Trustee)

GEO. BERTRAM SMITH (Trustee)

SEC. 17, T.36N-R.9W

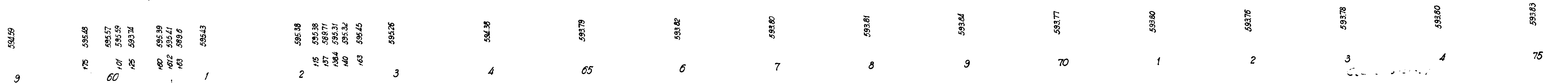
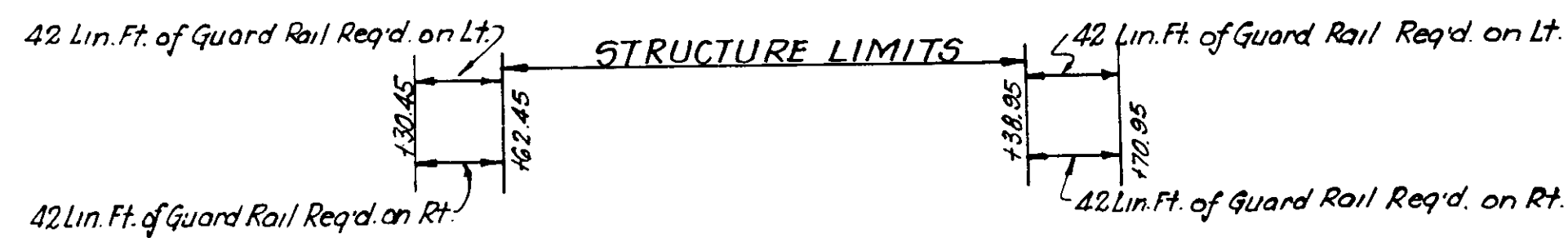
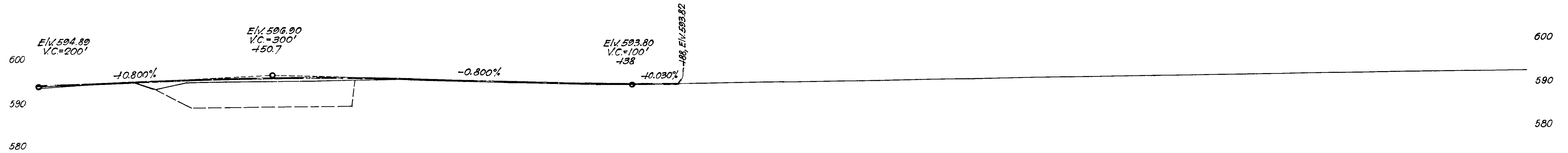


SEC. 20, T.36N-R.9W



B.M. No. 6 Elev. 592.23 Boat Spike in W. Side of 14" Willow 52' L. of Sta. 60 + 25
7 Elev. 592.89 10" Poplar 51' L. of Sta. 74 + 10

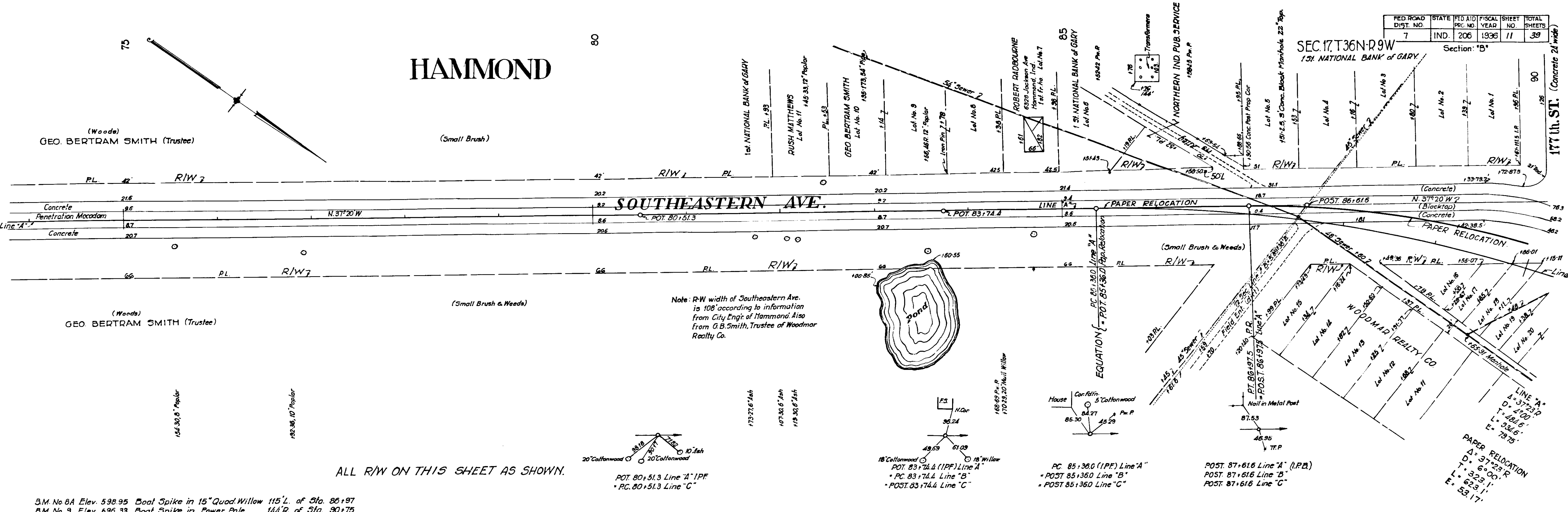
ALL R/W ON THIS SHEET AS SHOWN.



FED. ROAD DIST. NO.	STATE	FED. AID PRG. NO.	FISCAL YEAR	SHEET NO.	TOTAL SHEETS
7	IND.	206	1936	11	39

SEC. 17, T. 36N, R. 9W
 1st. NATIONAL BANK of GARY
 Section: "B"

HAMMOND



Condey
Cry
Williams

2355

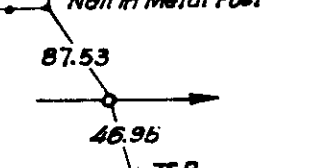
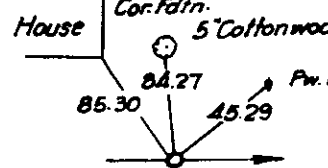
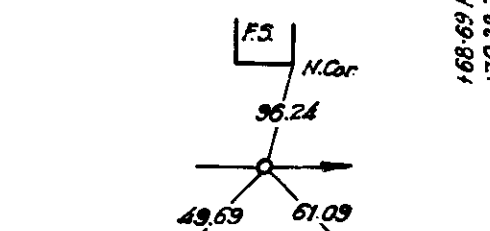
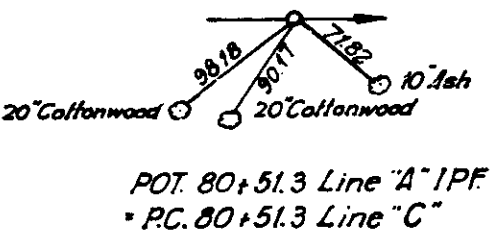
Condey
Cry
Williams

2356

ALL R/W ON THIS SHEET AS SHOWN.

Note: R-W width of Southeastern Ave. is 108' according to information from City Eng'r of Hammond. Also from G.B. Smith, Trustee of Woodmar Realty Co.

B.M. No 8A Elev. 598.95 Boat Spike in 15" Quad Willow 115' L. of Sta. 86+97
 B.M. No. 9 Elev. 596.33 Boat Spike in Power Pole 144' R. of Sta. 90+75

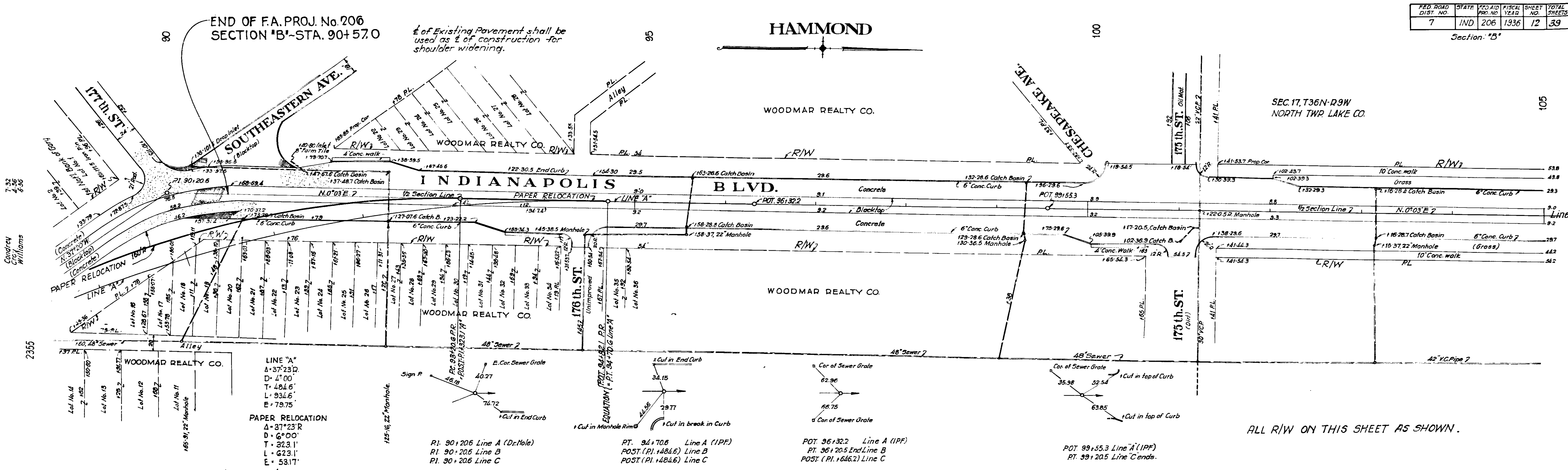


Cut = 2206 Cu. Yds.
 Fill + 25% = 0 " "
 Overhaul One Balance = 2206 " "
 Overhaul One Balance to be used in balance sta. 53+00 to 73+00.

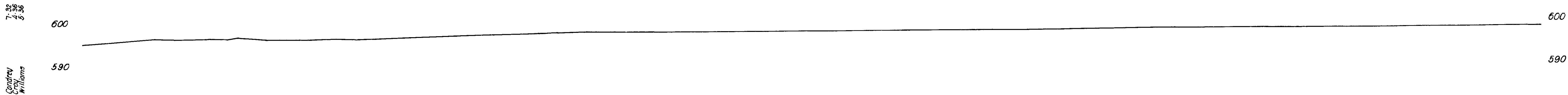
593.8	593.83	593.81	593.79	593.73	593.81	593.72	593.76	593.8	593.87	593.89	594.25	594.49	594.95	594.95	594.95	595.09	595.13	595.11	595.2	595.3	595.2	595.2	
74	75	6	7	8	9	80	1	2	3	4	85	86	6	7	7	80	8	8	8	9	9	9	90

FED. ROAD DIST. NO.	STATE	FISCAL YEAR	SHEET NO.	TOTAL SHEETS
7	IND	206	12	39

Section: "B"

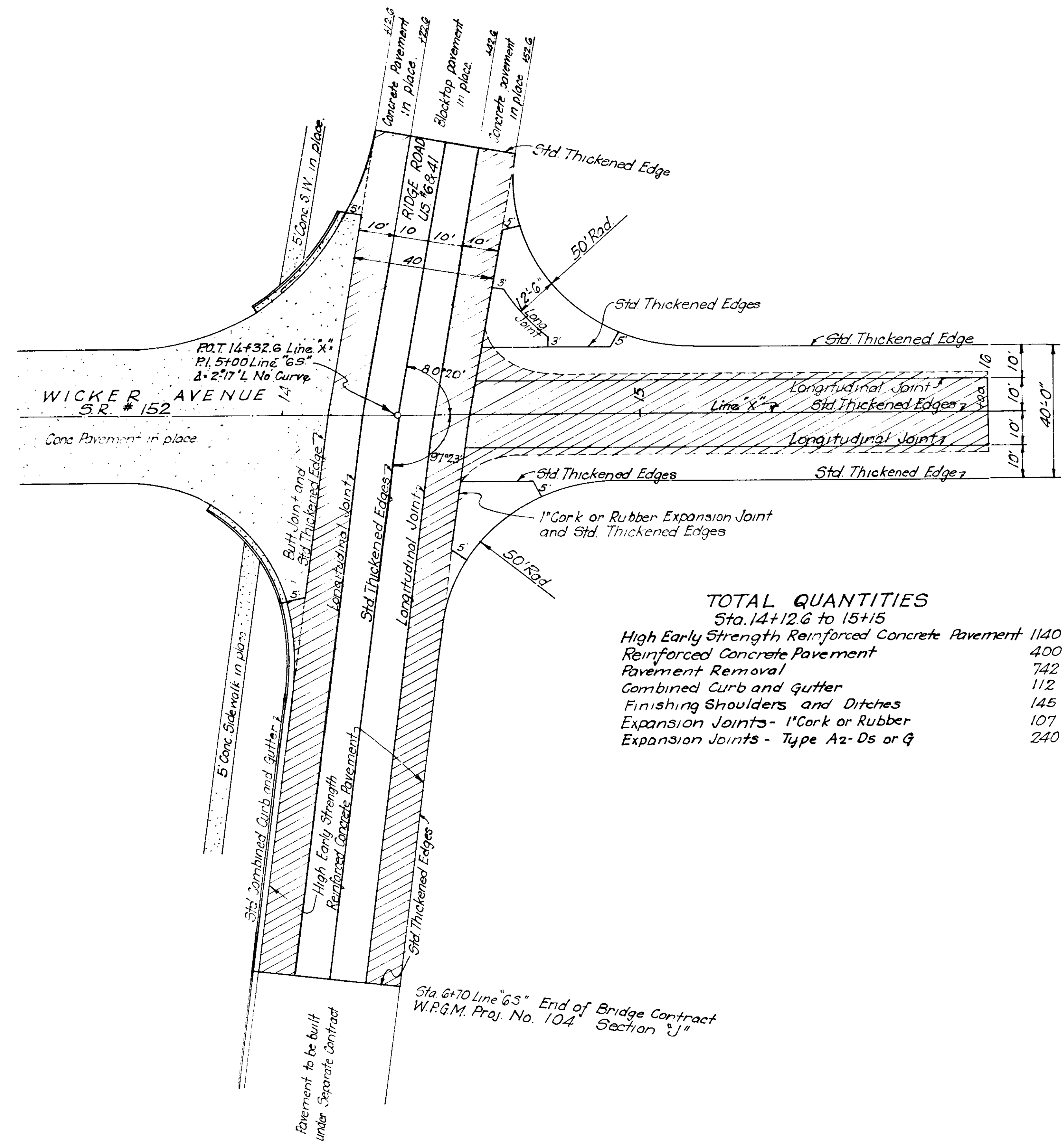


BM. No. 10 Elev. 600.63 Boat Spike in Pw.P. 182 R. of Sta. 98+68



89	596.3	180	597.5	136	597.4	112	597.94	119	598.59	108	598.73	175	598.99	101	599.08	102	599.14	103	599.22	104	599.29	105	599.29	
		133	597.6	138	597.6	117	598.03	121	598.70	162	598.73	176	598.99	117	599.09									
		171	597.8	140	598.71	123	597.23	144	598.71	158	598.73	175	598.99	125	599.10									
		172	597.8	144	598.71	126	597.38	154	598.53	166	598.73	175	598.99											
		173	597.8	144	598.71	126	597.38	154	598.53	166	598.73	175	598.99											
		174	597.8	144	598.71	126	597.38	154	598.53	166	598.73	175	598.99											
		175	597.8	144	598.71	126	597.38	154	598.53	166	598.73	175	598.99											
		176	597.8	144	598.71	126	597.38	154	598.53	166	598.73	175	598.99											
		177	597.8	144	598.71	126	597.38	154	598.53	166	598.73	175	598.99											
		178	597.8	144	598.71	126	597.38	154	598.53	166	598.73	175	598.99											
		179	597.8	144	598.71	126	597.38	154	598.53	166	598.73	175	598.99											
		180	597.5	136	597.4	112	597.94	119	598.59	108	598.73	175	598.99											
		181	597.2	133	597.6	117	598.03	121	598.70	162	598.73	176	598.99											
		182	597.2	133	597.6	117	598.03	121	598.70	162	598.73	176	598.99											
		183	597.2	133	597.6	117	598.03	121	598.70	162	598.73	176	598.99											
		184	597.2	133	597.6	117	598.03	121	598.70	162	598.73	176	598.99											
		185	597.2	133	597.6	117	598.03	121	598.70	162	598.73	176	598.99											
		186	597.2	133	597.6	117	598.03	121	598.70	162	598.73	176	598.99											
		187	597.2	133	597.6	117	598.03	121	598.70	162	598.73	176	598.99											
		188	597.2	133	597.6	117	598.03	121	598.70	162	598.73	176	598.99											
		189	597.2	133	597.6	117	598.03	121	598.70	162	598.73	176	598.99											
		190	597.2	133	597.6	117	598.03	121	598.70	162	598.73	176	598.99											

200 5-22-57



TOTAL QUANTITIES
Sta. 14+12.6 to 15+15

High Early Strength Reinforced Concrete Pavement	1140 Sq. Yds.
Reinforced Concrete Pavement	400 Sq. Yds.
Pavement Removal	742 Sq. Yds.
Combined Curb and Gutter	112 Lin. Ft.
Finishing Shoulders and Ditches	145 Lin. Ft.
Expansion Joints - 1" Cork or Rubber	107 Lin. Ft.
Expansion Joints - Type A2-Ds or Q	240 Lin. Ft.

Pavement to be built under separate contract

Sta 6+70 Line "65" End of Bridge Contract
W.R.G.M. Proj. No. 104 Section "J"

ESTIMATE OF QUANTITIES

BRIDGE AND CULVERT DATA

OFFICIAL ROAD DISTRICT NO. 7
 COUNTY FA
 YEAR 1936
 SEC. 'B'

FOR ROCK ASPHALT SURFACE										FOR BITUMINOUS CONCRETE SURFACE									
CONCRETE	WATERBOUND MACADAM	BITUMINOUS MACADAM	BITUMINOUS CONCRETE	BITUMINOUS CONCRETE AC	BIT COATED AGGREGATE	RECONSTRUCTED	BASE AND BINDER COURSES		CONCRETE	WATERBOUND MACADAM	BITUMINOUS MACADAM	BITUMINOUS CONCRETE	BITUMINOUS CONCRETE AC	BITUMINOUS COATED AGGREGATE	RECONSTRUCTED				
	4752						COARSE AGGREGATE	TONS	4510										
	1434						SCREENINGS	TONS	1353										
			2201				SUB-GRADE FINE AGGREGATE	TONS	601										
			1428				AGGREGATE	TONS		2064									
			3130				BITUMINOUS MATL. 1" 2" COAT	GALS		1429									
							BITUMINOUS MATL. 3" COAT	GALS		3430									
							BIT. MATL. FOR BASE TREAT.	TONS											
							COVER AGG. FOR BASE TREAT.	TONS											
							BIT. MATL. FOR PRIME	GALS											
							LEVELING OR WEDGE COURSE	TONS											
							BIT. COATED AGG. "EA"	TONS											
							BIT. COATED AGG. "LA"	TONS											
							BIT. COATED AGG. "T"	TONS											
							BIT. CONC. MIXTURE	TONS											
							CONCRETE	CU YDS											
							CONCRETE BASE COURSE	CU YDS											
							REINFORCING STEEL	TONS											

SURFACE COURSES	CONCRETE	REINFORCED CONCRETE	REINFORCED CONCRETE SURFACE	BITUMINOUS CONC. "A"	BITUMINOUS CONC. "B"	BITUMINOUS CONC. "AC"	NATURAL ROCK ASPHALT	STONE OR GRAVEL	BITUMINOUS MUDCH	BITUMINOUS RE-TREAD	BITUMINOUS TREATMENT	BITUMINOUS COATED AGGREGATE	ROAD OIL TREATMENT	PAVING
CONCRETE PAVEMENT	30 YDS													
REINFORCED PAVEMENT	30 YDS	10201		39			39							
REINFORCED RESURFACE	30 YDS													
REINFORCED CONC. PAVEMENT	30 YDS	1140												
REINFORCING STEEL	TONS	3628												
EXPANSION JOINTS TYPE A	LN FT	2400												
EXPANSION JOINT TYPE D	LN FT													
PREFORMED EXPANSION JOINT	LN FT		215											
CORK OR RUBBER EXP. JOINTS	LN FT													
BITUMINOUS EXP. JOINT	LN FT													
CONTRACTION JOINTS	LN FT													
CONCRETE OVERRUN	CU YDS													
ROCK ASPHALT	TONS						396							
BIT. CONC. MIX. TYPE "B"	TONS			848										
CRUSHED STONE OR GRAVEL	TONS													
AGG. FOR BIT. MICH SURFACE	TONS													
COVERING AGGREGATE	TONS													
BIT. MATL. FOR SURFACE SEAL	GALS													
BIT. MATL. FOR PRIME	GALS													
BIT. COATED AGGREGATE "EA"	TONS													
BIT. COATED AGGREGATE "LA"	TONS													
BIT. COATED AGGREGATE "T"	TONS													
MONUMENTS TYPE A	EACH													
MONUMENTS TYPE B	EACH													
MONUMENTS TYPE D	EACH													
CONCRETE HEADER	LN FT													
1/2" CORK OR RUBBER EXP. JOINTS	LN FT	59												

* Includes 39 Sq. Yds. Widened Pavement at Structure

TYPE OF PAVEMENT	EXCAVATION CU YDS.	SPECIAL BORROW	SPECIAL FILL MATERIAL	OVERHAUL CU YDS.			CONCRETE FOR STRUCTURES	RUBBLE HEADWALLS	REINFORCING STEEL FOR STRUCTURES	CATCH BASIN AND INLETS CONCRETE	CATCH BASINS AND INLETS BRICK
				ONE BALANCE	TWO BALANCES	THREE BALANCES					
	4206		811	125	2206						

CONCRETE	BRICK	MANHOLES	V.C. PIPE INLETS			ADJUSTED TO GRADE	STRUCTURE REMOVAL FOR CULVERT	FINISHING SHOULDRS AND DITCHES	SOODING	AGGREGATE FOR SHOULDRS	AGG. FOR SUB-SURFACE DRAINS	RIP-RAP	GROUTED RIP-RAP	RELAID RIP-RAP	PAVED SIDE DITCH	PAVED GUTTER
			12"	18"	24"											
								4811	792							

COMBINED CURB AND GUTTER	INTERNAL CONCRETE CURB	CONCRETE CURB	CURB RESET	SIDEWALK	CROSSWALK	PAVEMENT REMOVAL	PAVEMENT SURFACE REMOVAL	BRICK SURFACE RELAID	TEST HOLES	DYNAMIC	MACHINE OPERATION	FINAL BLASTING	TIMBER PILING
112			58	8			2766						

GUARD RAIL	MONUMENTS	SALVAGED ROAD	R.R. GRADE CROSSINGS	TOP SOIL	REMOVAL GUIDE POSTS AND GUARD RAIL POSTS
168				2226	32

	PIPE															
	6"	8"	10"	12"	15"	18"	21"	24"	30"	36"	42"	48"	54"	60"	72"	84"
VITRIFIED CLAY																
REINFORCED CONCRETE																
CAST IRON																
CORRUGATED METAL																
REINFORCED CLAY CAST IRON																
REINFORCED OR VIT. CLAY																
PIPE																
PIPE RELAID																
SEWER																
DRAIN TILE																

STRUCTURE NUMBER	LOCATION	DESCRIPTION	SIZE	KIND	SKEW	LENGTH	HEIGHT	WINGS	FLOW LINE		CONCRETE CLASS 'D'	SPECIAL CONCRETE CLASS 'D'	REINFORCING STEEL	REMARKS
									UP STREAM	DOWN STREAM				
7	614507	See Bridge Plans												
11	13432 R	Std. Manhole Regd. Type 2"												Connect to Str. No. 12 and 12" Sewer in place
12	13436 R	V.C. or R.C. Pipe Reg'd				10'								
13	14100 R	Std. Brick Catch Basin and Inlet Reg'd												
14	18433 R	Manhole in place Adjust cover to grade												

11
12
13
14