

FEDERAL ROAD DISTRICT NO.	STATE	STATE PROJ. NO.	FISCAL YEAR	SHEET NO.	TOTAL SHEETS
7	IND.	508	1927	1	16

### INDEX

SHEET NO.	TITLE SHEET
1	TITLE SHEET
2	STANDARD CROSS SECTIONS. MARCH 1926
3-4	PLAN AND PROFILE
5	BRIDGE AND CULVERT DATA - ESTIMATE OF QUANTITIES
6	MISCELLANEOUS STANDARDS. JAN. 1926
7	STANDARD REINFORCED CONCRETE BOX CULVERT. JAN. 1926
8	STANDARD REINFORCED CONCRETE CULVERT - SLAB TOP TYPE WITHOUT FILL (10' TO 18' SPAN)
9	STANDARD REINFORCED CONCRETE CULVERT - SLAB AND GIRDER WITHOUT FILL (20' SPAN)
10	STANDARD REINFORCED CONCRETE CULVERT - SLAB TOP TYPE UNDER FILL TO 5' (SPAN 10'-0" TO 20'-0")
11	DATA FOR SUPER-ELEVATING AND WIDENING OF CURVES
12	STANDARD DETOUR SIGNS
13-16	CROSS SECTIONS

## STATE OF INDIANA STATE HIGHWAY COMMISSION

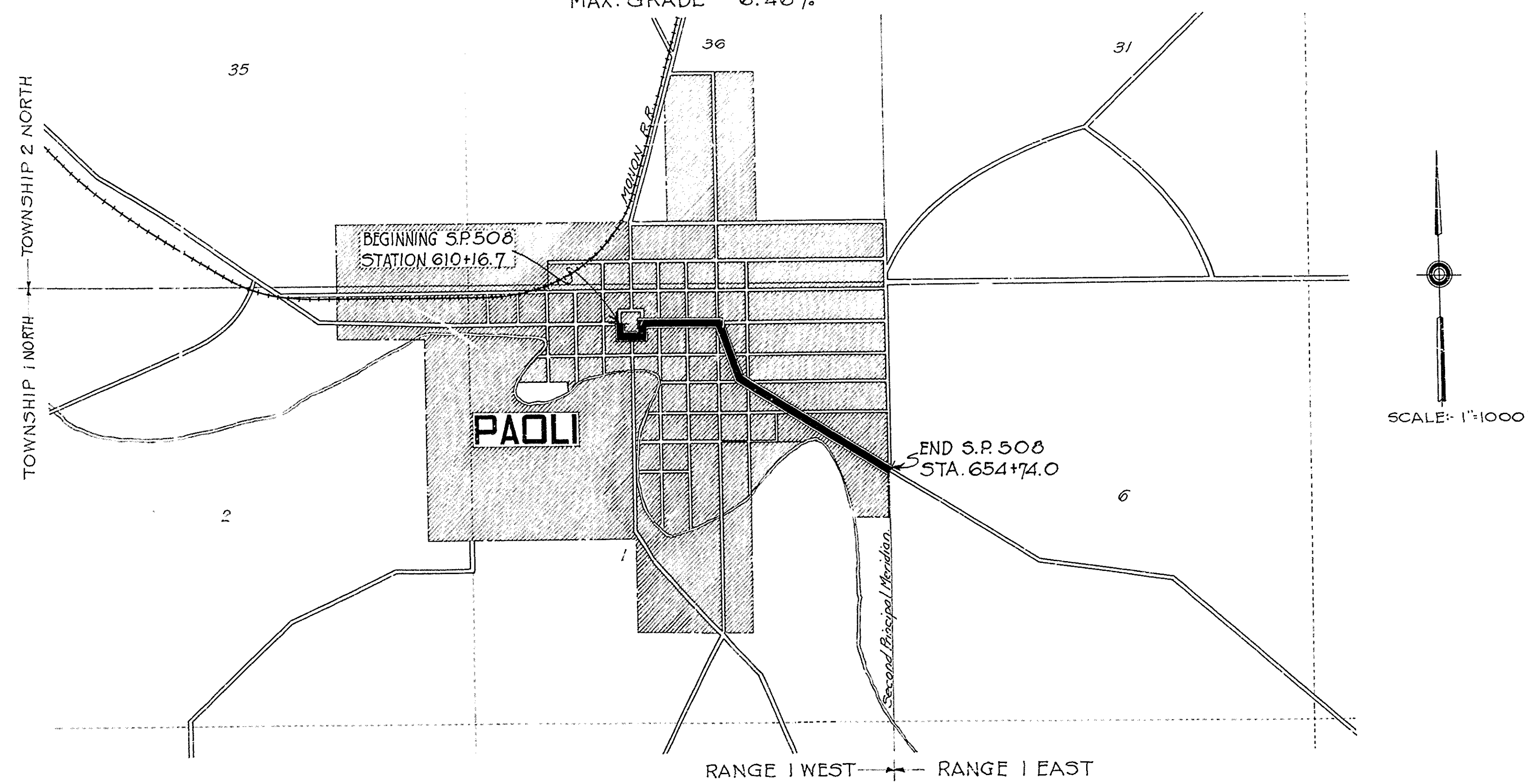
# PLAN AND PROFILE OF PROPOSED STATE HIGHWAY STATE PROJECT NO. 508 PAOLI - NEW ALBANY ROAD

BEGINNING AT THE INTERSECTION OF WEST COURT STREET AND MAIN STREET AND EXTENDING AROUND SOUTH SIDE OF COURT HOUSE SQUARE IN PAOLI THENCE EAST AND SOUTH EAST TO THE EAST CORPORATION LINE OF PAOLI, SAME BEING THE SECOND PRINCIPAL MERIDIAN. TOWNSHIP 1 NORTH. ORANGE COUNTY.

GROSS LENGTH = 0.844 MILES  
NET LENGTH = 0.844 MILES

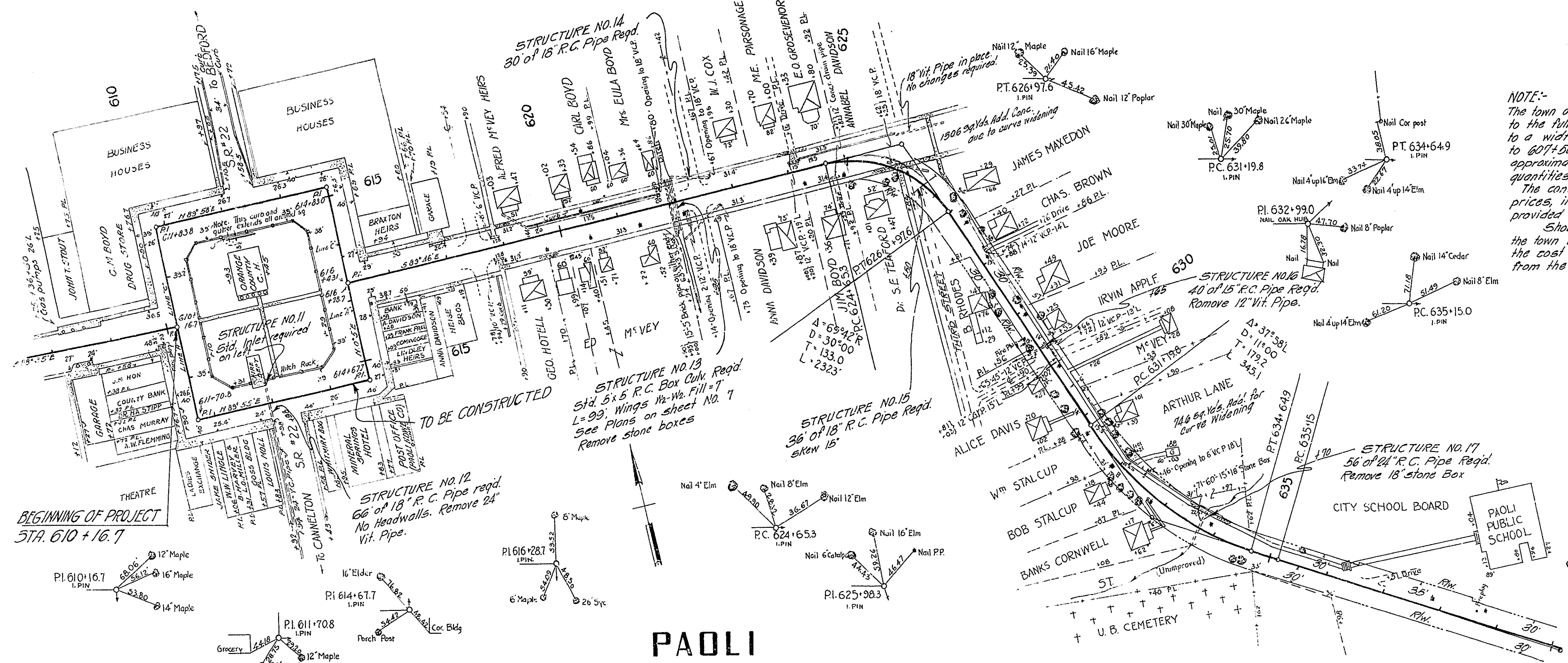
SCALES.  
PLAN { LONG: 1"=100'    TRANS: 1"=100' }    PROFILE { HORIZ: 1"=100'    VERT: 1"=10' }

MAX. GRADE = 6.46%



INDIANA STATE HIGHWAY STANDARD SPECIFICATIONS.  
TO BE USED WITH THESE PLANS, ALSO SUPPLEMENTAL  
SPECIFICATIONS, DRAFT OF FEB. 21, 1927

APPROVED: *Oct 25, 1926*  
*John D. Williams*  
DIRECTOR - INDIANA STATE HIGHWAY COMMISSION  
APPROVED: *Oct. 25, 1926*  
*W. H. ...*  
CHIEF ENGINEER - INDIANA STATE HIGHWAY COMMISSION



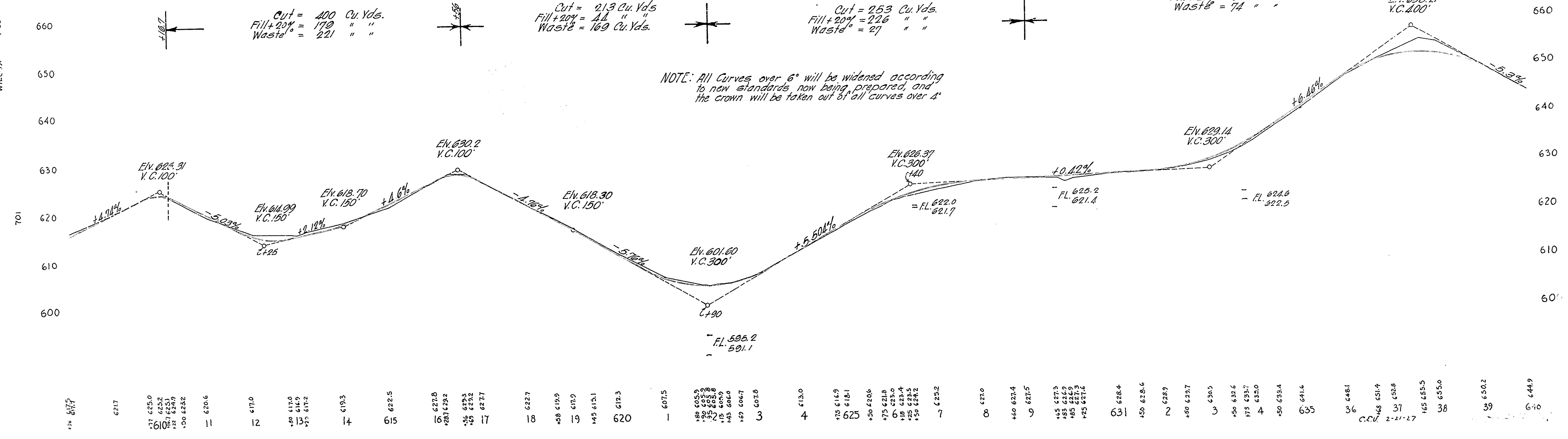
**NOTE:-**  
 The town of Paoli is desirous of widening the pavement through town to the full width between sidewalks from Sta. 607+50 to 610+30 and to a width of 36' from Sta. 614+80 to 633+50, also from Sta. 635+00 to 627+50. This widening is to include curbs, inlets etc. and the approximate quantities are as in the following table. The approximate quantities are included in the quantities in the proposal and contract. The contractor shall construct this pavement, curb etc. at his unit bid prices, in accordance with more detailed plans to be worked out and provided by the engineer at a later date. Should the state fail to make satisfactory arrangements for the town of Paoli to reimburse the state highway fund for the amount of the cost of such work, these added quantities will be deducted from the contract.

ADDITIONAL QUANTITIES DUE TO WIDENING.	
ITEMS	QUANTITIES
Excavation, Cu. Yds.	3153
Special Borrow, Cu. Yds.	600
Pavement, Sq. Yds.	21,384
Bit Expansion Joints pre-molded or poured, Lin. Ft.	650
Class 12 Concrete in Culverts, Cu. Yds.	4.7
New 15" Reinf. Conc. Pipe, Lin. Ft.	50
New 18" Reinf. Conc. Pipe, Lin. Ft.	78
Inlets	10
Combination Curb and Gutter, Lin. Ft.	1185
Integral Curb, Lin. Ft.	11070

B.M. No. 71 E.V. 622.25 Boat spike in 16" Alder, S.E. Cor. of Court House Lawn, 5d Lt. Sta. 614+15  
 B.M. No. 72 E.V. 609.20 " " " 24" Maple, 35' Lt. Sta. 620+70  
 B.M. No. 73 E.V. 628.27 " " " 12" Walnut, 27' Lt. Sta. 629+73  
 B.M. No. 74 E.V. 642.51 " " " 8" Twin Elm, 29' Lt. Sta. 635+60

**PAOLI**  
 STANDARD SECTION A-6, ADOPTED MARCH 1906 TO BE USED ON THIS PROJECT  
 Grade Line indicates top of finished Pavement.

**NOTE:** Standards, under date as listed in index on Title Sheet, to be used on this Project.



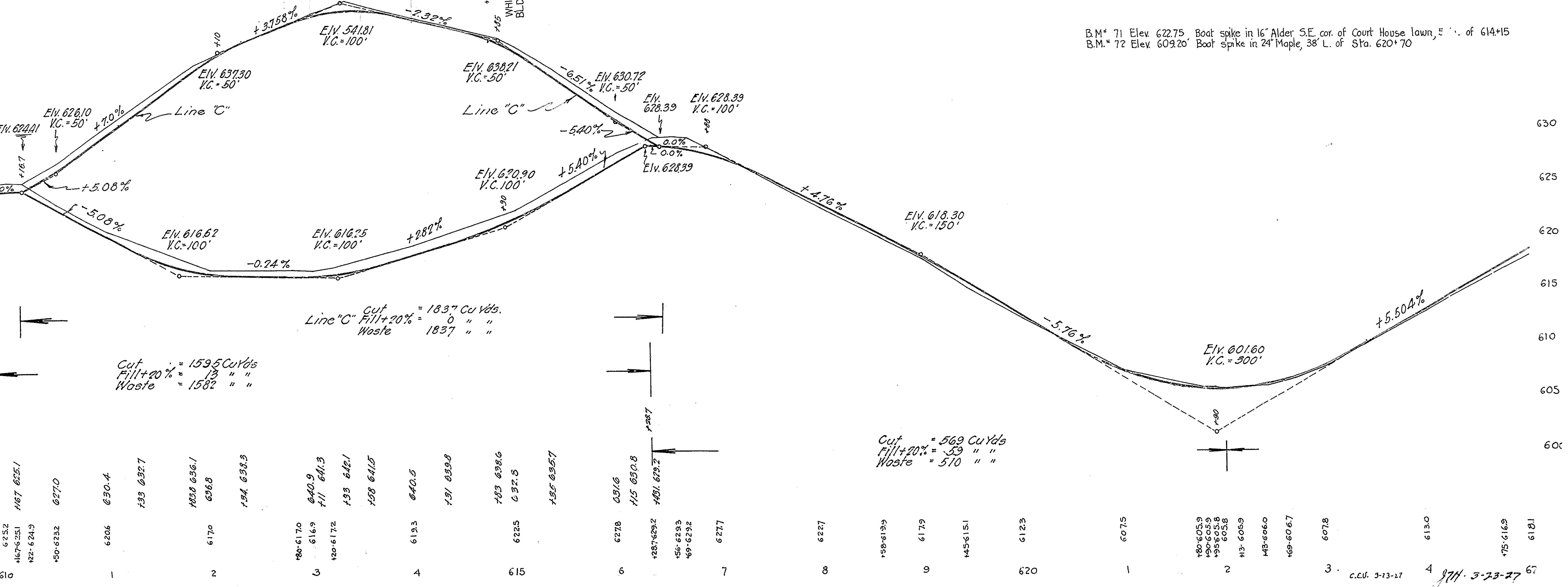
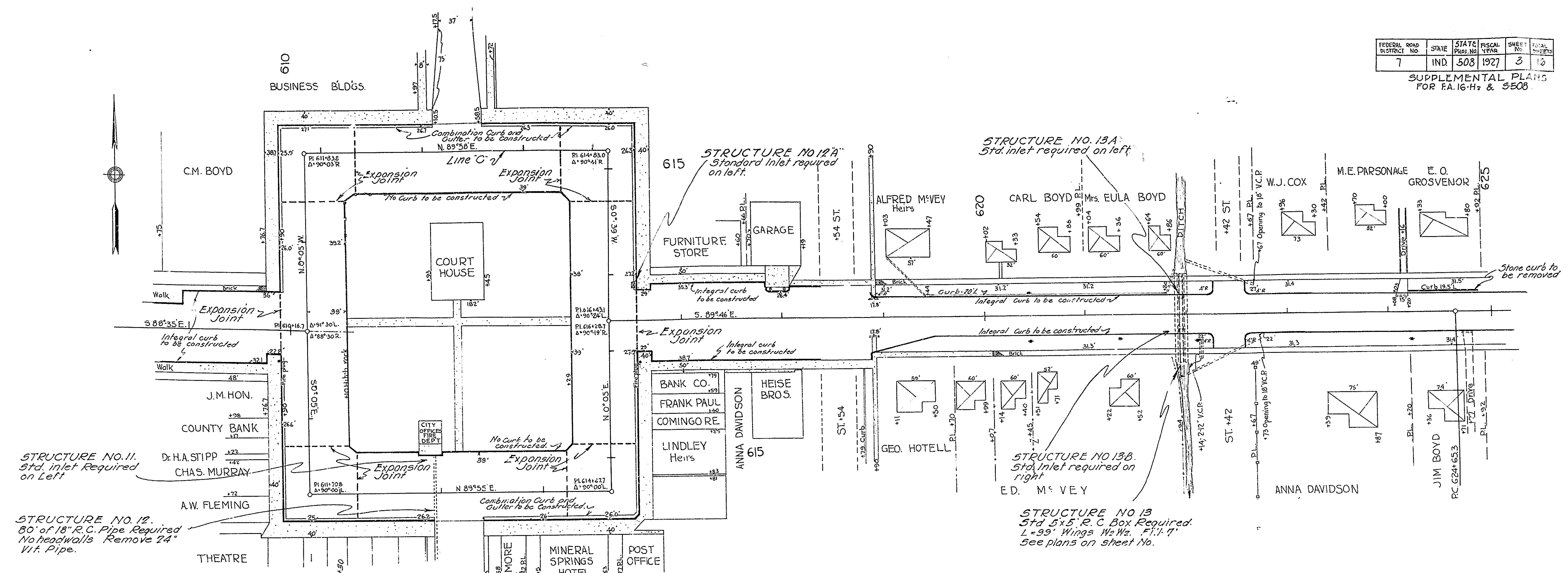


FEDERAL ROAD DISTRICT NO.	STATE	STATE PROJ. NO.	FISCAL YEAR	SHEET NO.	TOTAL SHEETS
7	IND.	508	1927	3	13

SUPPLEMENTAL PLANS FOR FA. 16-H<sub>2</sub> & 3508

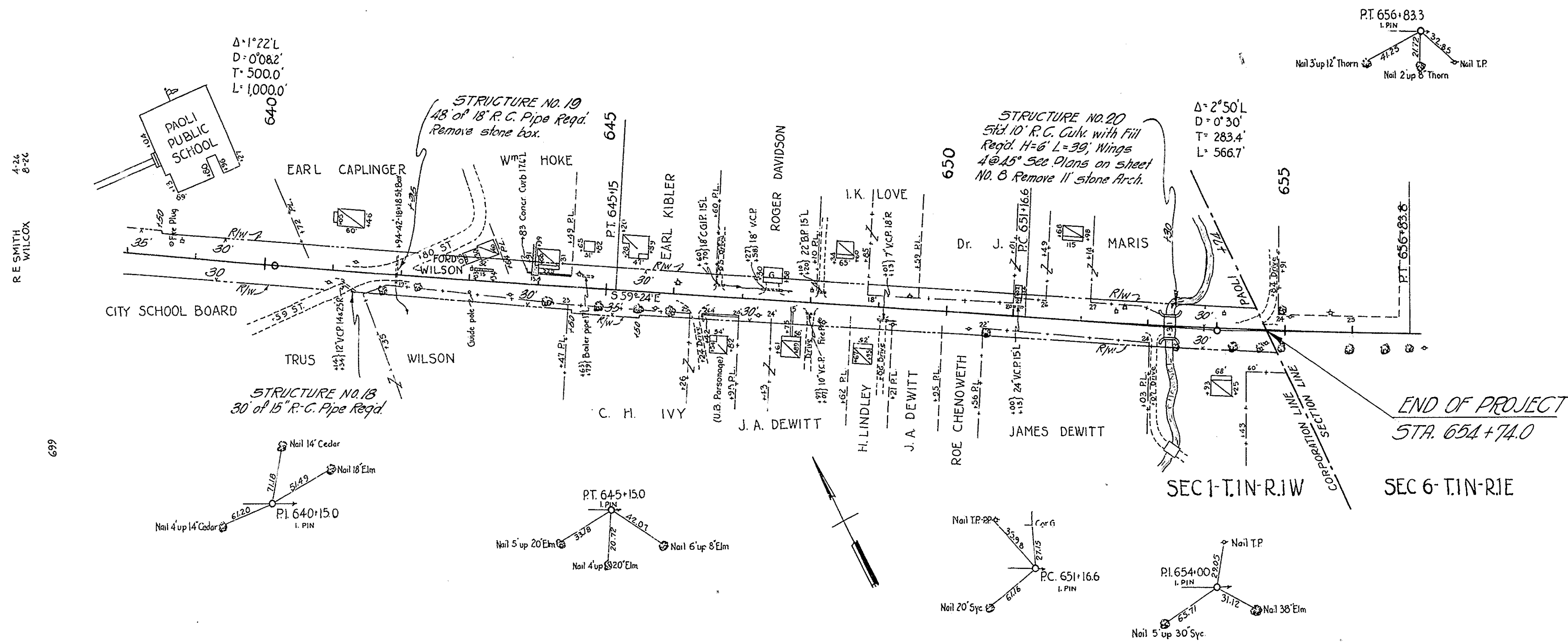
E.L.F. SMITH 3-27

699

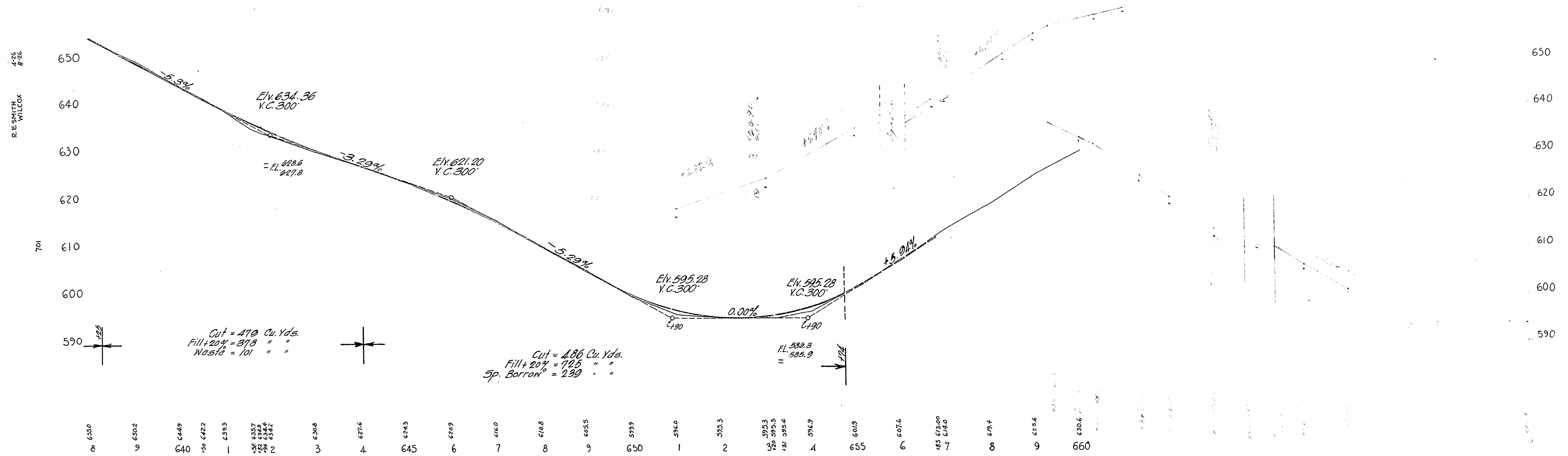


B.M. 71 Elev. 622.75. Boat spike in 16' Alder S.E. cor. of Court House lawn, E. of 614+15  
 B.M. 72 Elev. 609.20. Boat spike in 24' Maple, 38' L. of Sta. 620+70

STATE	FISCAL YEAR	SHEET NO.	TOTAL SHEETS
IND	1927	4	16



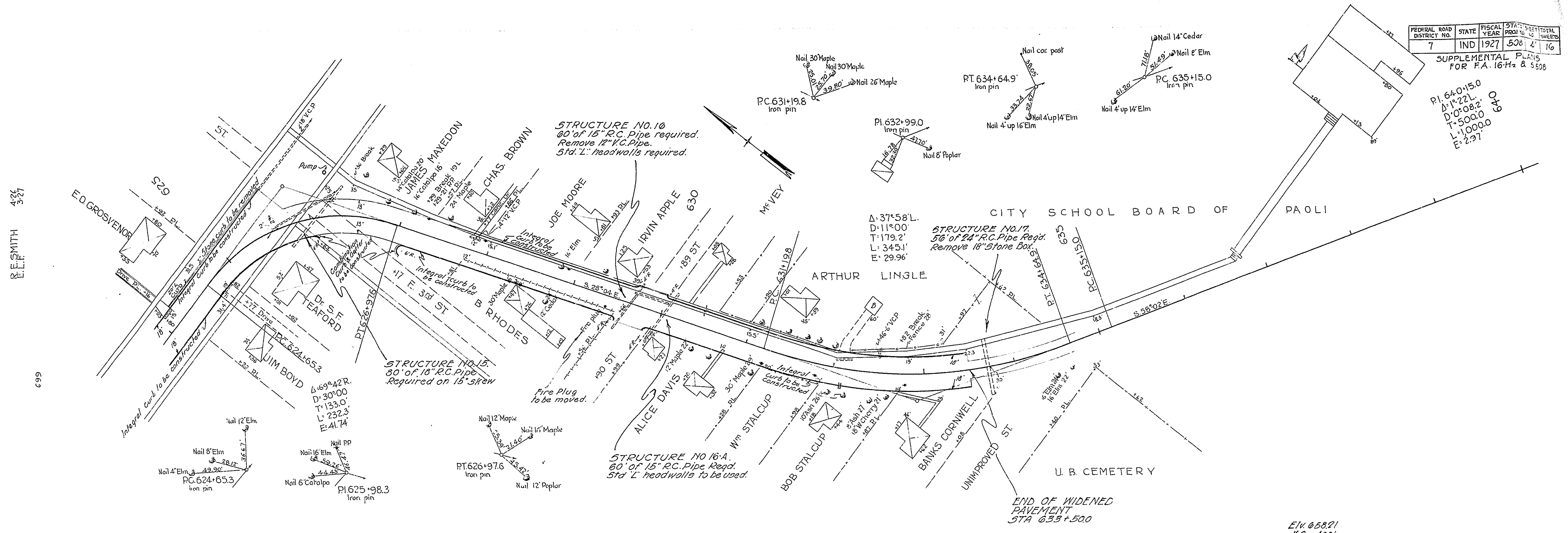
B.M. No. 75 Elev. 639.27 Boat Spike in 14' Cedar, 37' L. Sta. 641+16  
 B.M. No. 76 Elev. 597.53 " " " 21' Sycamore, 27' R. Sta. 650+02  
 B.M. No. 77 Elev. 602.13 " " " 30' Elm, 24' R. Sta. 655+96



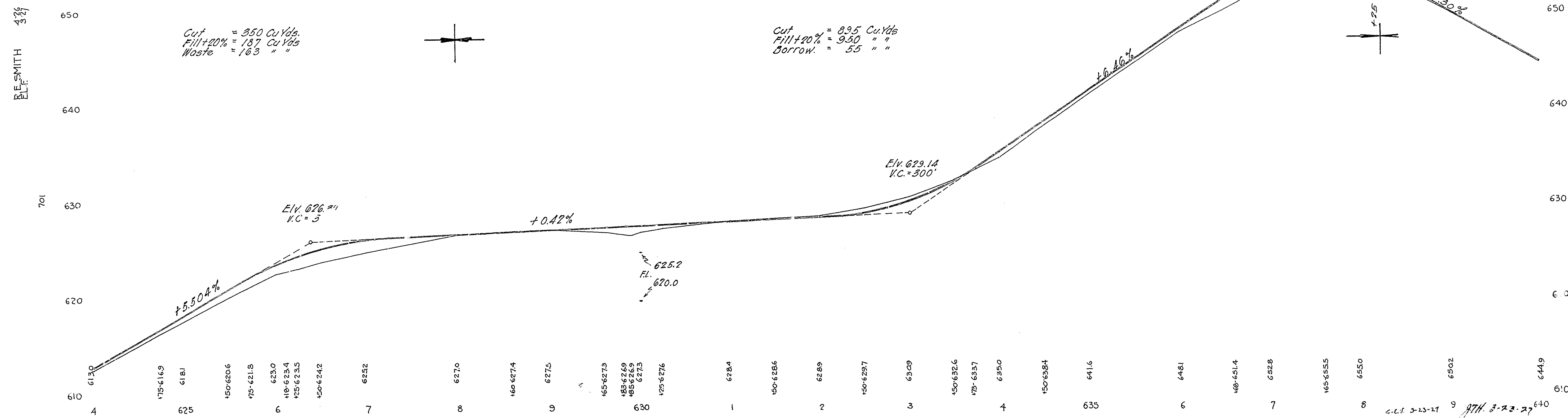
FEDERAL ROAD DISTRICT NO.	STATE	FISCAL YEAR	PROJECT NO.	SHEET NO.	TOTAL SHEETS
7	IND	1927	508	4	16

SUPPLEMENTAL PLANS FOR F.A. 16th & 95th

PI. 640+15.0  
 Δ: 17.22L  
 D: 0°08.2'  
 T: 500.0  
 L: 1000.0  
 E: 2.27



B.M. #73 Elev. 628.27 Boat spike in 12' Walnut, 27' L. Sta. 629+73  
 B.M. #74 Elev. 642.31 Boat spike in 8' Twin Elm, 29' L. Sta. 635+60



3-23-27 97th 3-23-27