

# INDEX

SHEET NO.	1	TITLE SHEET.
SHEET NO.	2	TYPICAL CROSS SECTIONS.
SHEET NO.		STANDARD CROSS SECTIONS.
SHEET NO.	3-4	PLAN AND PROFILE.
SHEET NO.	5	BRIDGE AND CULVERT DATA—ESTIMATE OF QUANTITIES (PORTION BUILT WITH N.R.M. FUNDS.)
SHEET NO.	5A	BRIDGE & CULVERT DATA—ESTIMATE OF QUANTITIES (PORTION BUILT WITH STATE FUNDS.)
SHEET NO.	6-7	MISCELLANEOUS STANDARDS. SHEET "A" Rev. DEC. 21, 1933. SHEET "B" Rev. JAN. 19, 1934.
SHEET NO.	8	MISCELLANEOUS STANDARDS. SHEET "C" Rev. NOV. 28, 1933.
SHEET NO.		STD. REINF. CONC. BOX CULVERT.
SHEET NO.		STD. REINF. CONC. CULV.—SLAB TOP TYPE WITHOUT FILL (10'-0" TO 18'-0" SPAN)
SHEET NO.		STD. REINF. CONC. CULV.—SLAB TOP TYPE UNDER FILL 1'-0" TO 5'-0" (10'-0" TO 20'-0" SPAN)
SHEET NO.		STD. REINF. CONC. CULV.—SLAB AND GIRDER WITHOUT FILL (20'-0" SPAN) 24'-0" ROADWAY
SHEET NO.		STD. REINF. CONC. CULV.—SLAB TOP TYPE WITHOUT FILL (10'-0" TO 20'-0" SPAN) 15° SKEW.
SHEET NO.		STD. REINF. CONC. CULV.—SLAB TOP TYPE UNDER FILL 1'-0" TO 5'-0" (10'-0" TO 20'-0" SPAN) 15° SKEW.
SHEET NO.		STD. REINF. CONC. CULV.—SLAB TOP TYPE WITHOUT FILL (10'-0" TO 20'-0" SPAN) 30° SKEW.
SHEET NO.		STD. REINF. CONC. CULV.—SLAB TOP TYPE UNDER FILL 1'-0" TO 5'-0" (10'-0" TO 20'-0" SPAN) 30° SKEW.
SHEET NO.		STD. REINF. CONC. CULV.—SLAB TOP TYPE WITHOUT FILL (10'-0" TO 20'-0" SPAN) 45° SKEW.
SHEET NO.		STD. REINF. CONC. CULV.—SLAB TOP TYPE (5'-0" TO 10'-0" SPAN) GRAVITY TYPE.
SHEET NO.		STD. REINF. CONC. CULV.—SLAB TOP TYPE (12'-0" TO 20'-0" SPAN) GRAVITY TYPE.
SHEET NO.		STD. CABLE GUARD RAIL AND GUARD RAIL FUNNELS
SHEET NO.		FLEXIBLE STEEL PLATE GUARD RAIL AND GUARD RAIL FUNNELS
SHEET NO.		
SHEET NO.		
SHEET NO.		
SHEET NO.		STD. ARCH CULV.
SHEET NO.		STD. PLAN FOR FILLING IN PEAT MARSHES.
SHEET NO.		DATA FOR SUPER-ELEVATING AND WIDENING OF CURVES.
SHEET NO.	9	STD. DETOUR SIGNS, JAN. 1927.
SHEET NO.		CROSS SECTIONS

FEDERAL ROAD DISTRICT NO.	STATE	N.R.M. PROJ. NO.	FISCAL YEAR	SHEET NO.	TOTAL SHEETS
7	IND.	239	1934	1	9

SECTION: C

## STATE OF INDIANA STATE HIGHWAY COMMISSION

# PLAN AND PROFILE OF PROPOSED STATE HIGHWAY N.R.H.M. PROJECT NO. 239 SEC. C S.R. 18 IN MARION

BEGINNING AT THE WEST SIDE OF NICKEL PLATE R.R. TRACKS AND  
RUNNING EAST ON THIRD STREET TO THE BEGINNING OF THE 20'  
CONCRETE PAVEMENT IN PLACE ON S.R. 18 (THIRD STREET) IN  
MARION IN GRANT COUNTY.

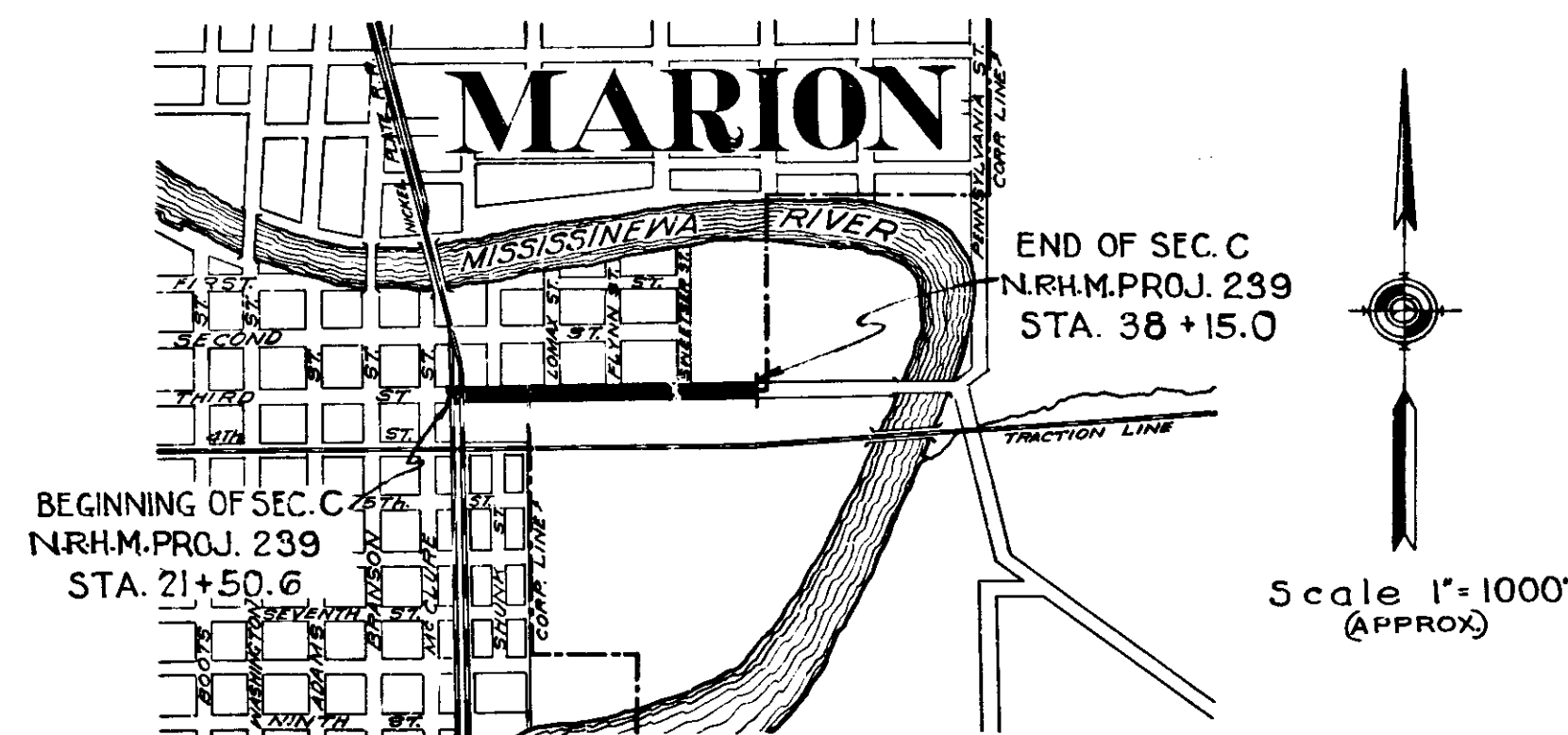
GROSS LENGTH:- 0.315 MI.

NET LENGTH:- 0.307 MI.

SCALES:-

PLAN { LONG:- 1"=100'  
TRANS:- 1"=100' } PROFILE { HORIZ:- 1"=100'  
VERT:- 1"=10'

MAX. GRADE= 4.50%



STATE HIGHWAY COMMISSION OF INDIANA.  
STANDARD SPECIFICATIONS FOR ROAD CONSTRUCTION,  
DATED 1934, ON FILE WITH U.S. BUREAU OF PUBLIC  
ROADS, TO BE USED WITH THESE PLANS.

APPROVED AND ADOPTED  
BY STATE HIGHWAY COMMISSION OF INDIANA

*Ervin B. Stevenson*  
CHAIRMAN - PRO TEM - STATE HIGHWAY COMMISSION OF INDIANA

APPROVED

*W. Keefe*  
CHIEF ENGINEER - STATE HIGHWAY COMMISSION OF INDIANA

RECOMMENDED FOR APPROVAL

DISTRICT ENGINEER - PUBLIC ROADS

RECOMMENDED FOR APPROVAL

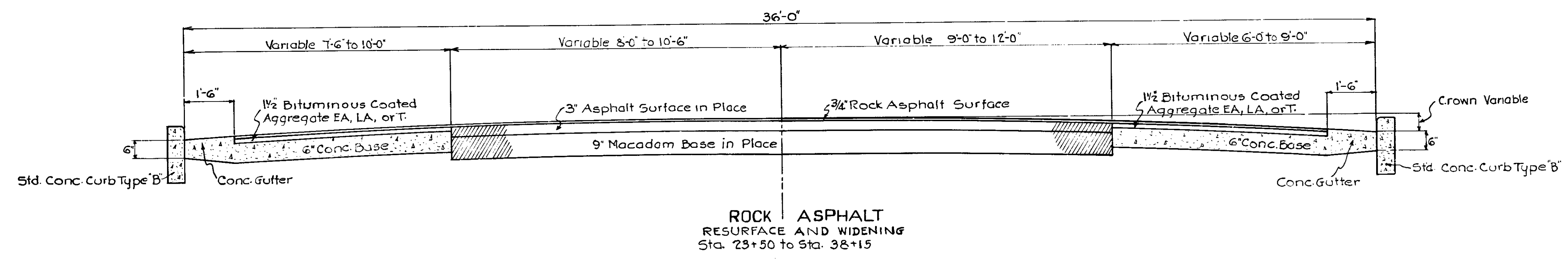
CHIEF ENGINEER - DISTRICT OF PUBLIC ROADS

APPROVED

CHIEF BUREAU OF PUBLIC ROADS

C.C.R. 2-5-34

SECTION - C



TYPICAL PAVING SECTION  
TO BE USED ON  
N.R.H.M. PROJ. NO. 239 SEC. 'C'  
SCALE 1" = 20'

APPROVED *Evan B. [Signature]*  
CHAIRMAN - PRO TEM. STATE HIGHWAY COMMISSION OF INDIANA

APPROVED *[Signature]*  
CHIEF ENGINEER - STATE HIGHWAY COMMISSION OF INDIANA

C.S.A. 2-1-34



FEDERAL ROAD DISTRICT NO.	STATE	N.R.H.M. PROJ. NO.	FISCAL YEAR	SHEET NO.	SH.
7	IND.	239	1934	4	9

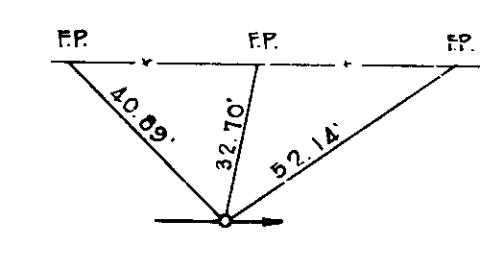
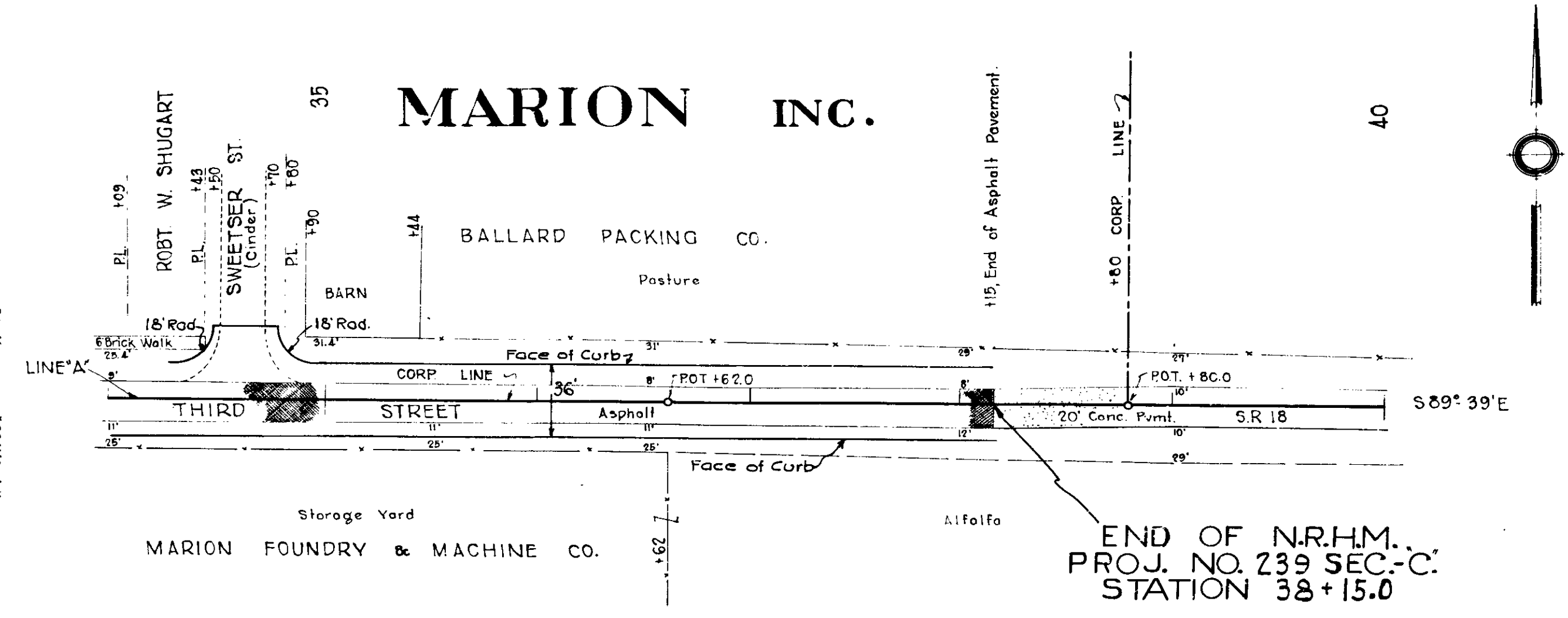
SECTION: - C

10-33  
10-34  
D.A. Gunder  
G.E. Goodwin  
Y.P. Wilcox

1585

10-33  
10-34  
D.A. Gunder  
G.E. Goodwin

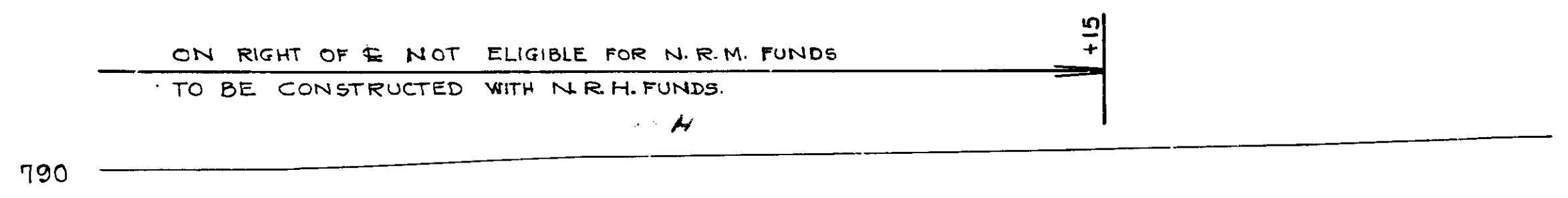
1586



P.O.T. 36 + 62.0 (I.P.)  
B.M. No. 5 El. 792.47 Boot spike in Power Pole, 30' Left of Sta. 36 + 15.

No Point Set  
P.O.T. 38 + 80.0

NOTE:- ALL R/W ON THIS SHEET ON EACH SIDE OF E, EXCEPT AS SHOWN.



1913	1913	1925	1928	1931	1932	1935	1937	1943	1944
34	440 1913 180 1917	35	36	37	38 +15 1932	39	40	40	40

C.R. 3-2-34





