

INDEX

SHEET NO.	1	TITLE SHEET.
SHEET NO.	2	TYPICAL CROSS SECTIONS.
SHEET NO.	3-4	STANDARD CROSS SECTIONS. C.I.I.F.R. Rev. Apr. 10, 1935. C.I.I.F.R. Rev. Jan. 8, 1935.
SHEET NO.	5	STD. EXPANSION JOINTS. Rev. June 1, 1935. October 3, 1935.
SHEET NO.	6	STD. PAVEMENT JOINTS. Rev. June 1, 1935.
SHEET NO.	7-20	PLAN AND PROFILE.
SHEET NO.	21-22	BRIDGE AND CULVERT DATA—ESTIMATE OF QUANTITIES FOR P.C., R.A., & BIT. CONC. P.V.M.TS.
SHEET NO.	23-24	MISCELLANEOUS STANDARDS. SHEET 'A' FEB. 1935. SHEET 'B' FEB. 1935.
SHEET NO.	25-26	MISCELLANEOUS STANDARDS. SHEET 'C' Rev. MAY 9, 1935. SHEET 'D' FEB. 1935.
SHEET NO.	27	STD. REINF. CONC. BOX CULVERT. Rev. Jan. 11, 1935.
SHEET NO.	28	STD. REINF. CONC. CULV.—SLAB TOP TYPE WITHOUT FILL (10'-0" TO 18'-0" SPAN)
SHEET NO.	29	STD. REINF. CONC. CULV.—SLAB TOP TYPE UNDER FILL (1'-0" TO 5'-0" (10'-0" TO 20'-0" SPAN)
SHEET NO.	30	STD. REINF. CONC. CULV.—SLAB AND GIRDER WITHOUT FILL (20'-0" SPAN)
SHEET NO.	31	STD. REINF. CONC. CULV.—SLAB TOP TYPE WITHOUT FILL (10'-0" TO 20'-0" SPAN) 15° SKEW.
SHEET NO.	32	STD. REINF. CONC. CULV.—SLAB TOP TYPE UNDER FILL (1'-0" TO 5'-0" (10'-0" TO 20'-0" SPAN) 15° SKEW.
SHEET NO.	33	STD. REINF. CONC. CULV.—SLAB TOP TYPE WITHOUT FILL (10'-0" TO 20'-0" SPAN) 30° SKEW.
SHEET NO.	34	STD. REINF. CONC. CULV.—SLAB TOP TYPE UNDER FILL (1'-0" TO 5'-0" (10'-0" TO 20'-0" SPAN) 30° SKEW.
SHEET NO.	35	STD. REINF. CONC. CULV.—SLAB TOP TYPE WITHOUT FILL (10'-0" TO 20'-0" SPAN) 45° SKEW.
SHEET NO.	36	STD. REINF. CONC. CULV.—SLAB TOP TYPE UNDER FILL (1'-0" TO 5'-0" (10'-0" TO 20'-0" SPAN) 45° SKEW.
SHEET NO.	37	STD. REINF. CONC. CULV.—SLAB TOP TYPE (10'-0" TO 10'-0" SPAN) GRAVITY TYPE.
SHEET NO.	38	STD. FLEXIBLE STEEL PLATE GUARD RAIL. MAY 1935.
SHEET NO.	39	STD. RAILROAD GRADE CROSSING.
SHEET NO.	40	STD. PLAN FOR FILLING IN FEAT MARSHES.
SHEET NO.	41	DATA FOR SUPER-ELEVATING AND WIDENING OF CURVES. SEPT. 1932.
SHEET NO.	42	STD. DETOUR SIGNS. Rev. Feb. 14, 1935.
SHEET NO.	43-46	CROSS SECTIONS.

FEDERAL ROAD DISTRICT NO.	STATE	PROJ. NO.	FISCAL YEAR	SHEET NO.	TOTAL SHEETS
7	IND.	284	1936	1	96

SECTION - G

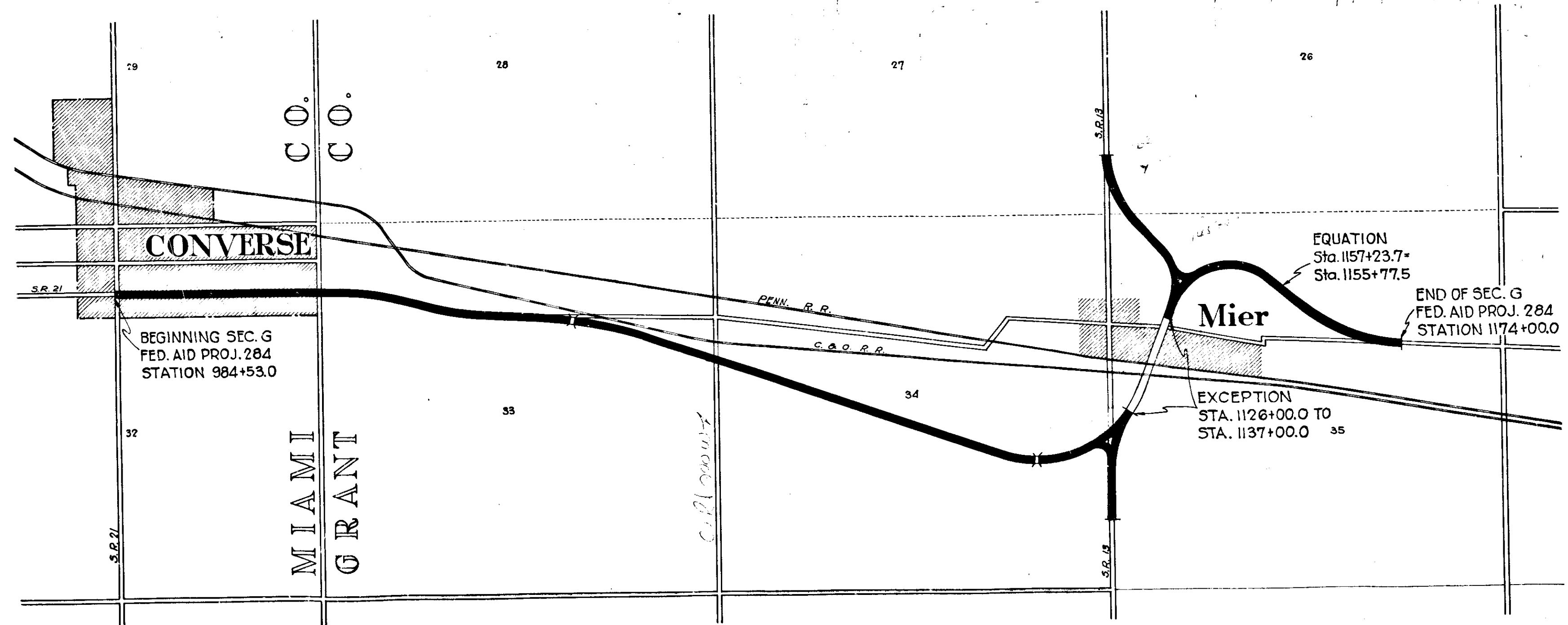
STATE OF INDIANA
STATE HIGHWAY COMMISSION

PLAN AND PROFILE OF PROPOSED
STATE HIGHWAY
F.A. PROJECT NO. 284 SEC. G (1936)
MARION-^{PERU} ROAD

BEGINNING ON MARION ST. AT THE WEST SIDE OF JEFFERSON ST. (S.R. 21) IN CONVERSE, IN MIAMI COUNTY, AND RUNNING EAST THRU MIER TO A POINT ON THE DELPHI ROAD APPROX. 1440 FT. WEST OF THE EAST LINE OF SECTION 35 TOWNSHIP 25 NORTH RANGE 6 EAST IN GRANT COUNTY.

GROSS LENGTH = 4.480 MI.
NET LENGTH = 4.150 MI.
F.A. NET LENGTH = 3.495 MI.
STATE NET LENGTH = 0.465 MI.

SCALES:-
PLAN LONG:- 1"=100' PROFILE HORIZ:- 1"=100'
TRANS:- 1"=100' VERT:- 1"=10' MAX. GRADE 5.00%



REVISED	SHEET NO.	REVISION
3-21-35	13, 15, 19, 21, 22	Intersection Details & R/W
10-11-35	12, 13, 14, 21	Guard Rail
10-16-35	20, 14, 15, 19, 21, 42	State Funds
2-29-36	10	R/W
4-1-36	8 and 10	R/W
5-29-36	8	R/W

SCALE: 1"=1000'

APPROVED AND ADOPTED *[Signature]*
BY STATE HIGHWAY COMMISSION OF INDIANA

APPROVED *[Signature]*
CHIEF ENGINEER STATE HIGHWAY COMMISSION OF INDIANA

RECOMMENDED FOR APPROVAL *[Signature]*
DISTRICT ENGINEER - SOUTH DISTRICT

RECOMMENDED FOR APPROVAL *[Signature]*
CHIEF ENGINEER - WEST DISTRICT

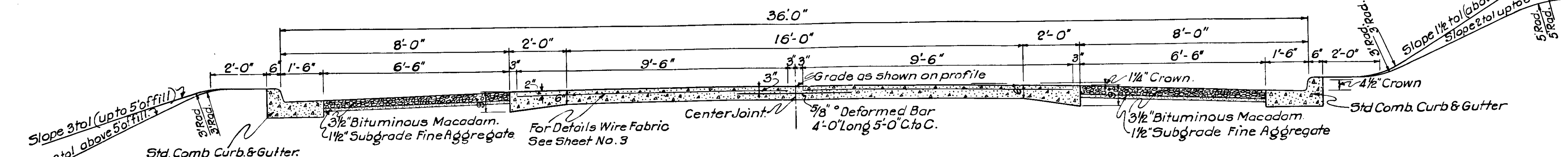
APPROVED *[Signature]*
CHIEF ENGINEER - EAST DISTRICT

STATE HIGHWAY COMMISSION OF INDIANA.
STANDARD SPECIFICATIONS FOR ROAD CONSTRUCTION, DATED MARCH 1935,
AND ADDENDUM NO. 1 ON FILE WITH U. S. BUREAU OF PUBLIC
ROADS TO BE USED WITH THESE PLANS.

344 8-3-35

FEDERAL ROAD DISTRICT NO.	STATE	FED. AID PROJ. NO.	FISCAL YEAR	SHEET NO.	TOTAL SHEETS
1	IND.	284	1936	2	96

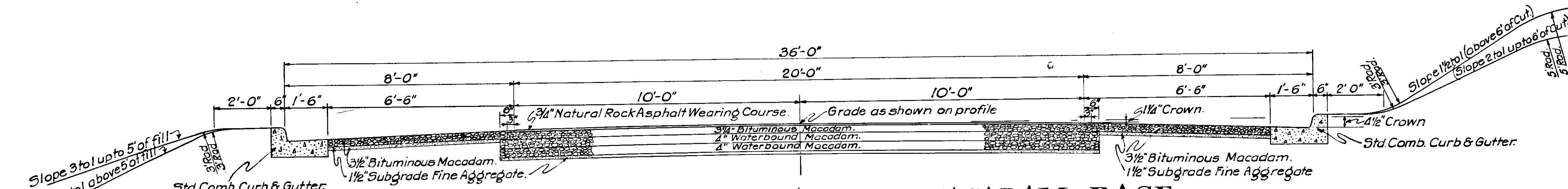
Sec. 6.



REINFORCED CONCRETE PAVEMENT

STA. 984+53 to STA. 1011+64

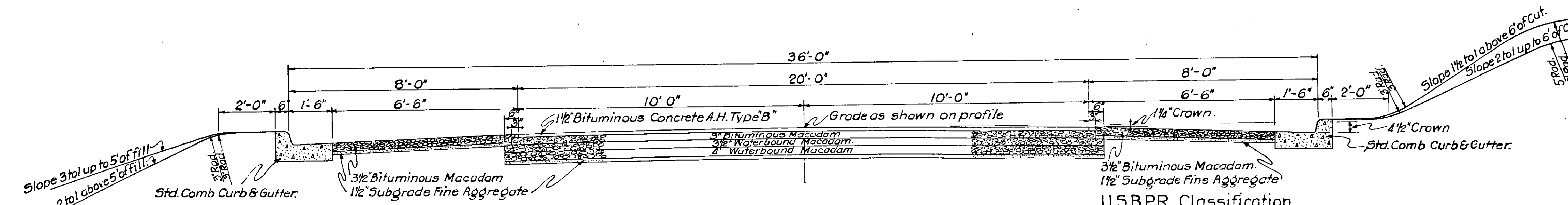
U.S.B.P.R. Classification
Penetration Macadam Surface Course Class D-Type D1.



NATURAL ROCK ASPHALT ON MACADAM BASE

STA. 984+53 to STA. 1011+64

U.S.B.P.R. Classification
Rock Asphalt Surface Course - Class G-Type G1
Penetration Macadam Binder Course Class D-Type D1
Penetration Macadam Surface Course Class D-Type D1



BITUMINOUS CONCRETE AH ON MACADAM BASE

STA. 984+53 to STA. 1011+64

U.S.B.P.R. Classification
Hot Asphalt Concrete Surface Course Class I Type I1
Penetration Macadam Binder Course Class D-Type D1
Penetration Macadam Surface Course Class D-Type D1

Note: When any part of a fill requires a 2 to 1 slope, that slope should be continued thruout the fill on that side of road.

NOTE: When any part of a cut requires a 1 1/2 to 1 slope, that slope shall be continued thruout the cut on that side of road.

NOTE: Where the new construction follows along an old gravel or stone road, the portion of traffic bound metal within the limits of the required water bound macadam base course may be substituted for same, the remaining thickness to be built up in accordance with the specifications for new waterbound macadam base course. The total thickness of traffic bound metal and waterbound macadam shall not be less than the thickness of the waterbound courses.

Wherever, in the construction of the subgrade, material is encountered which in the opinion of the Engineer may be substituted for Subgrade Fine Aggregate, that item shall be omitted from that portion of the contract.

TYPICAL CROSS SECTIONS.

APPROVED: *James D. Adams*
CHAIRMAN: State Highway Commission of Indiana.

APPROVED: *W. H. Kemp*
CHIEF ENGINEER: State Highway Commission of Indiana.

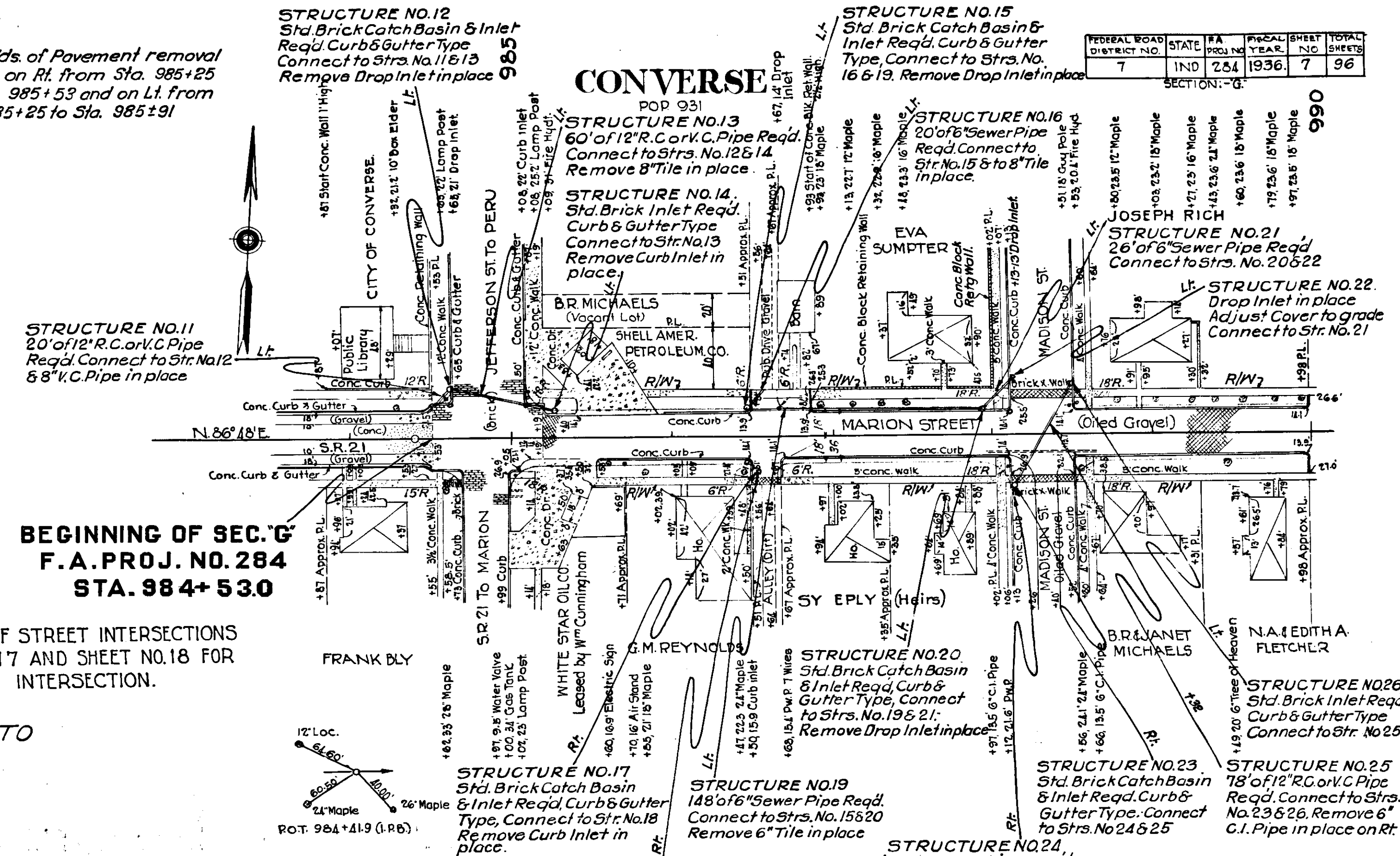
T-31
5-3-32
F. A. Proje.
F. A. Proje.
F. A. Proje.

4170

T-31
5-3-32
F. A. Proje.
F. A. Proje.

2283

48 Sq. Yds. of Pavement removal
Req'd. on Rt. from Sta. 985+25
to Sta. 985+53 and on Lt. from
Sta. 985+25 to Sta. 985+91



**BEGINNING OF SEC. G
F.A. PROJ. NO. 284
STA. 984+53.0**

FOR DETAILS OF STREET INTERSECTIONS
SEE SHEET NO. 17 AND SHEET NO. 18 FOR
TYPICAL ALLEY INTERSECTION.

ALL R/W ON THIS SHEET TO
BE PRESENT R/W.

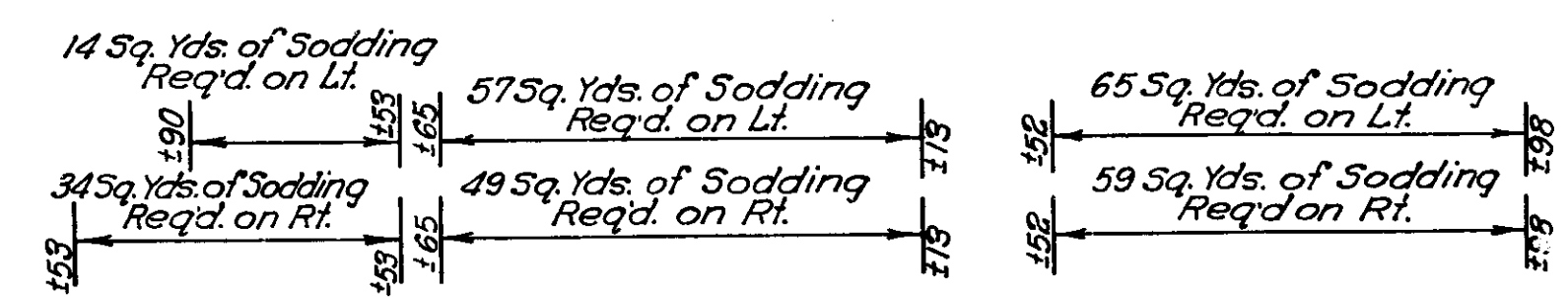
B.M. No. 80 Elev. 829.09 Point of Arrow on Top of Fire Hyd, N.E. Cor. Jefferson & Marion St Converse 33' Lt. of Sta. 985+10

TYPICAL PAVING SECTIONS AS SHOWN ON SHEET NO. 2 TO BE USED BETWEEN
STA. 984+53.0 AND STA. 1011+64, AND STANDARD PAVING SECTIONS C-11-FR REVISED
APRIL 1935, AND C-11-GB REVISED JANUARY 8, 1935, AS SHOWN ON SHEETS NO. 3 & 4
TO BE USED BETWEEN STA. 1011+64 AND STA. 1174+00.

State Highway Commission of Indiana Std. Specifications for Road Construction
Dated March 1935 and Addendum No. 1 shall apply in the construction of this project.
Standards under dates listed in Index on Title Sheet, shall apply in the construction of this project.

Grade line as shown represents top of finished pavement.
Top of all castings within the pavement limits shall be set 1/4\" below proposed surface.
All curves of 5° and over shall be widened according to Standards of 1932.
The crown will be taken out of all curves over 2°.

At all Road Approaches where Metal Surface is required, the Contractor shall salvage that
part of Grovel or Stone in place as directed by the Project Engineer.
Grade will be raised 3\" for Rock Asphalt and Bituminous Concrete Pavements between
Sta. 1011+64 and Sta. 1174+00.



Cut = 1055 Cu. Yds.
Fill + 25% = 26 \" \"
Waste = 1029 \" \"
1029 Cu. Yds. of above waste to be used
between Sta. 1013+00 and Sta. 1029+00.

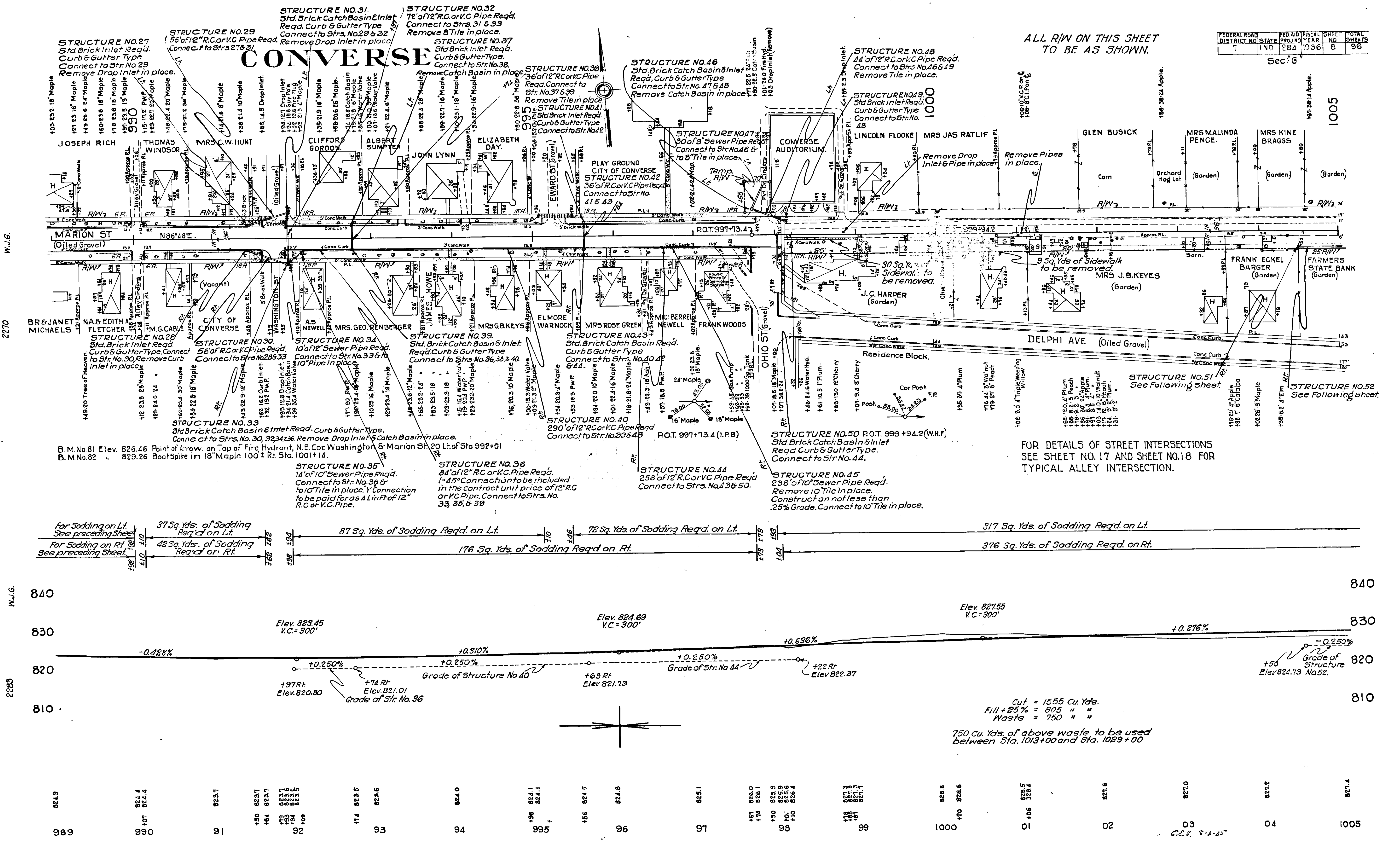
Station	Elevation	Station	Elevation
984	824.40	986	826.08
984+25	824.40	986+25	826.08
984+50	824.40	986+50	826.08
984+75	824.40	986+75	826.08
985+00	824.40	987+00	826.08
985+25	824.40	987+25	826.08
985+50	824.40	987+50	826.08
985+75	824.40	988+00	826.08
986+00	824.40	988+25	826.08
986+25	824.40	988+50	826.08
986+50	824.40	989+00	826.08
986+75	824.40	989+25	826.08
987+00	824.40	989+50	826.08
987+25	824.40	990+00	826.08
987+50	824.40		
987+75	824.40		
988+00	824.40		
988+25	824.40		
988+50	824.40		
988+75	824.40		
989+00	824.40		
989+25	824.40		
989+50	824.40		
989+75	824.40		
990+00	824.40		

FEDERAL ROAD DISTRICT NO.	STATE	PROJ. NO.	YEAR	SHEET NO.	TOTAL SHEETS
7	IND	284	1936	7	96

SECTION: 1-0

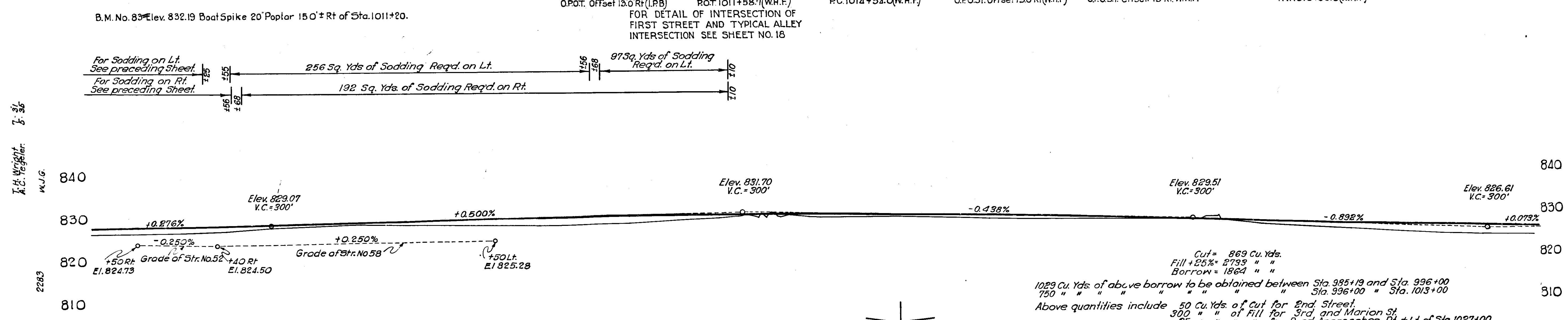
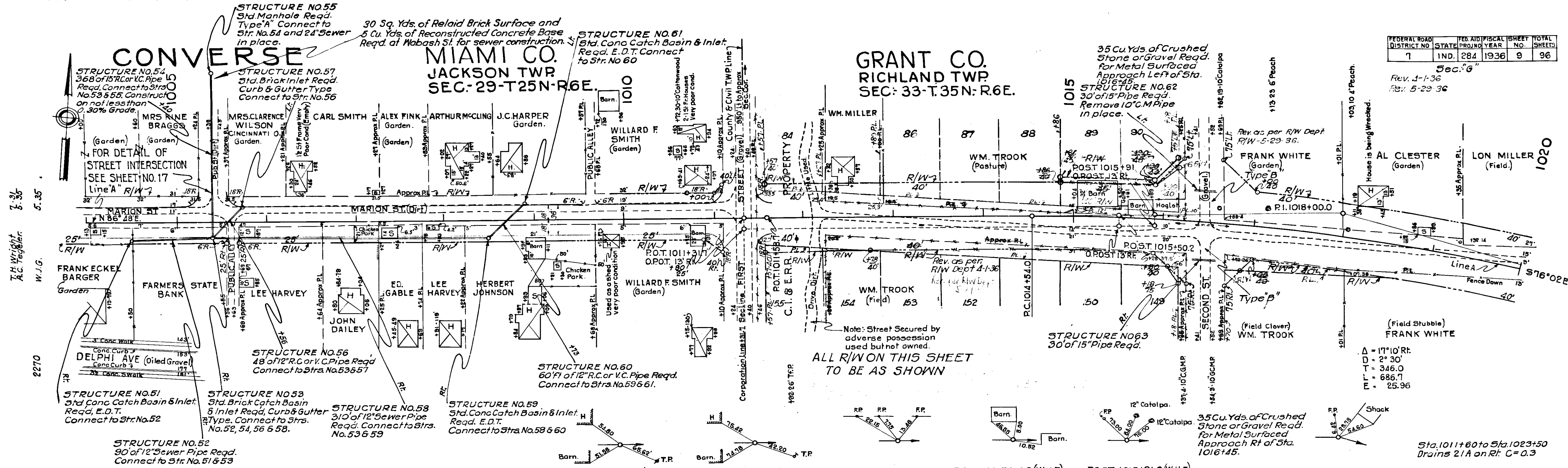
T.H. Wright
A.C. Tegeler
7-35
W.J.G.

T.H. Wright
A.C. Tegeler
7-35
W.J.G.



FEDERAL ROAD DISTRICT NO.	STATE	PROJECT NO.	YEAR	SHEET NO.	TOTAL SHEETS
7	IND.	284	1936	9	96

Sec. 26
 Rev. 4-1-36
 Rev. 5-23-36



Station	Elevation
1004	827.2
1005	827.4
1006	827.8
1007	828.0
1008	828.5
1009	829.2
1010	829.9
1011	830.2
1012	830.8
1013	831.0
1014	831.3
1015	831.5
1016	831.8
1017	832.0
1018	832.5
1019	833.0
1020	834.9

35 Cu.Yds of Crushed Stone or Gravel Req'd. For Metal Surfaced Approach to Marion St. Lt. of Sta. 1020+50

70 Cu.Yds of Crushed Stone or Gravel Req'd. For Metal Surfaced Approach to Third St. and Rt. of Sta. 102+55

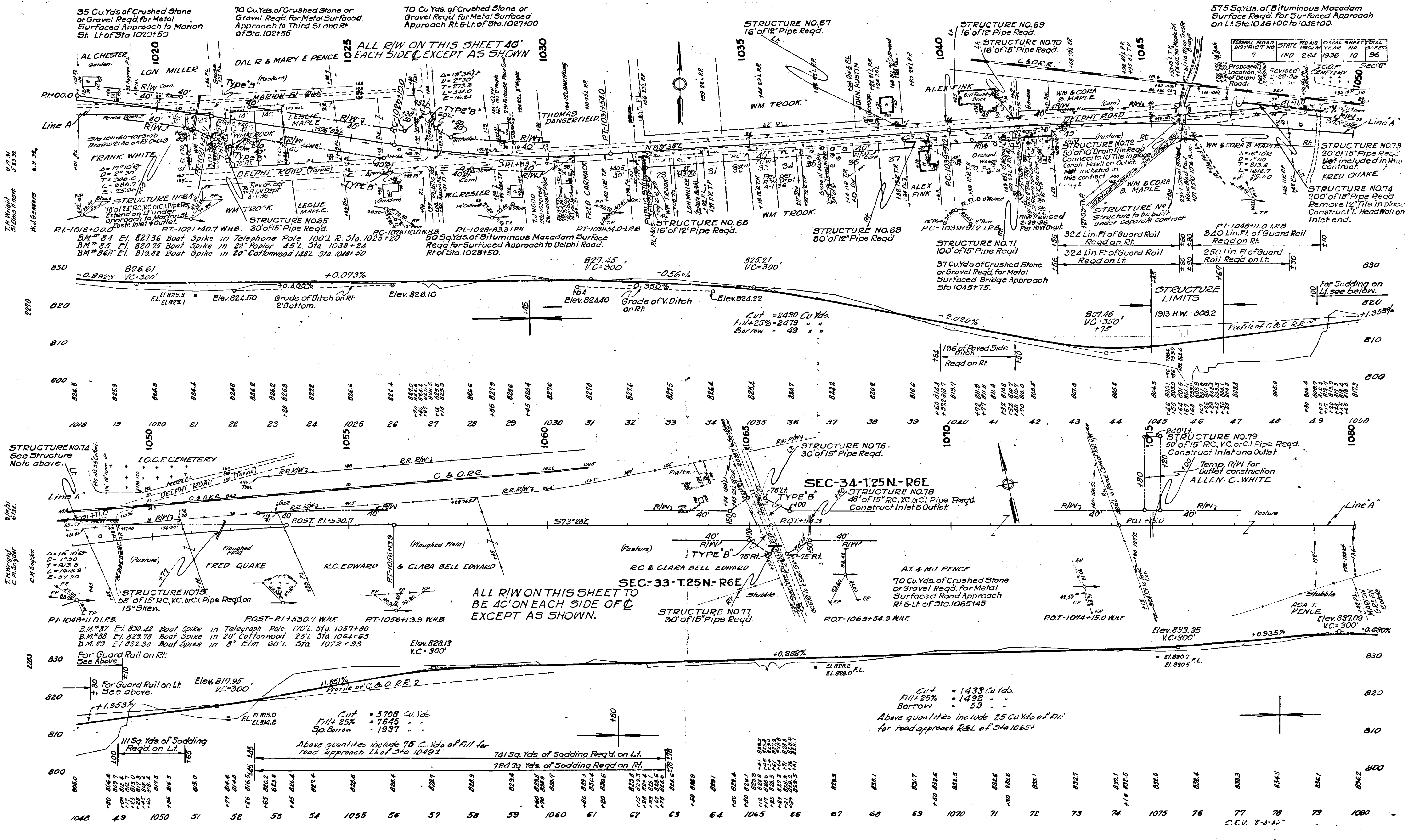
70 Cu.Yds of Crushed Stone or Gravel Req'd. For Metal Surfaced Approach Rt. & Lt. of Sta. 1027+00

575 Sq.Yds. of Bituminous Macadam Surface Req'd. For Surfaced Approach on Lt. Sta. 1046+00 to 1048+00.

FEDERAL ROAD DISTRICT NO.	STATE	FED. AID FROM YEAR	FISCAL YEAR	SHEET TOTAL NO.	TOTAL SHEETS
7	IND	284	1936	10	96

ALL R/W ON THIS SHEET 40' EACH SIDE EXCEPT AS SHOWN

ALL R/W ON THIS SHEET TO BE 40' ON EACH SIDE OF C EXCEPT AS SHOWN.

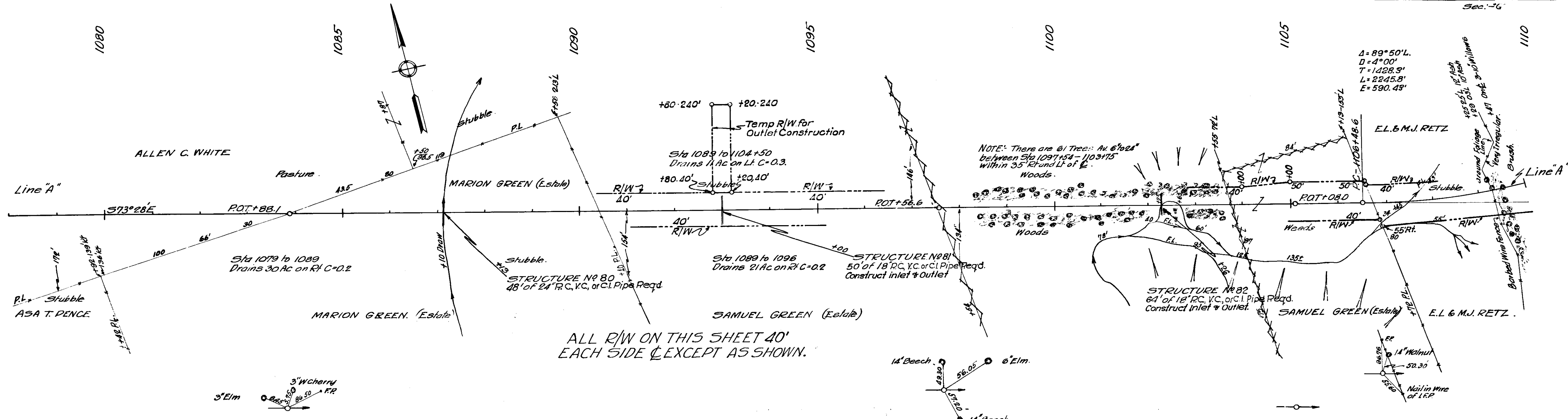


T.M. Wright, S. L. H. Hart, N.J. Gammara

T.M. Wright, C.M. Snyder, C.M. Snyder

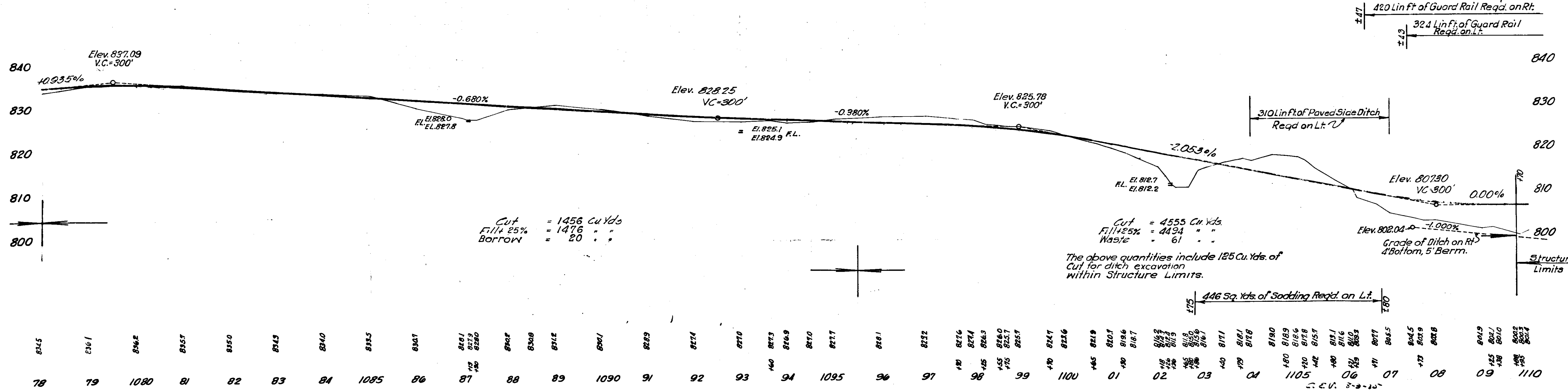
C.C.V. 8-3-35

FEDERAL ROAD DISTRICT NO.	STATE	PROJECT YEAR	SHEET NO.	TOTAL SHEETS
7	IND	284 192	7	96



ALL R/W ON THIS SHEET 40' EACH SIDE EXCEPT AS SHOWN.

POT-1083+88.1 WHF
 B.M. No. 90 Elev. 831.68 Boat Spike in 6" Twin Elm 72' Lt. of Sta. 1085+80
 B.M. No. 91 Elev. 829.77 " " 6" Elm 45' Lt. " " 1097+74
 B.M. No. 92 Elev. 811.27 " " 12" Ash 82' Lt. " " 1103+82
 B.M. No. 93 Elev. 801.80 " " 8" Ash 120' Lt. " " 1108+90



Cut = 1456 Cu Yds
 Fill @ 25% = 1476 " "
 Borrow = 20 " "

Cut = 4555 Cu Yds
 Fill @ 25% = 4494 " "
 Waste = 61 " "

The above quantities include 125 Cu. Yds. of Cut for ditch excavation within Structure Limits.

446 Sq. Yds. of Sodding Req'd. on Lt.

I. H. Wright 9/12/31
 S. E. Elmo 11/19/32
 W. J. Genders 6/19/32

I. H. Wright 5/11/31
 S. E. Elmo 11/19/32
 W. J. Genders

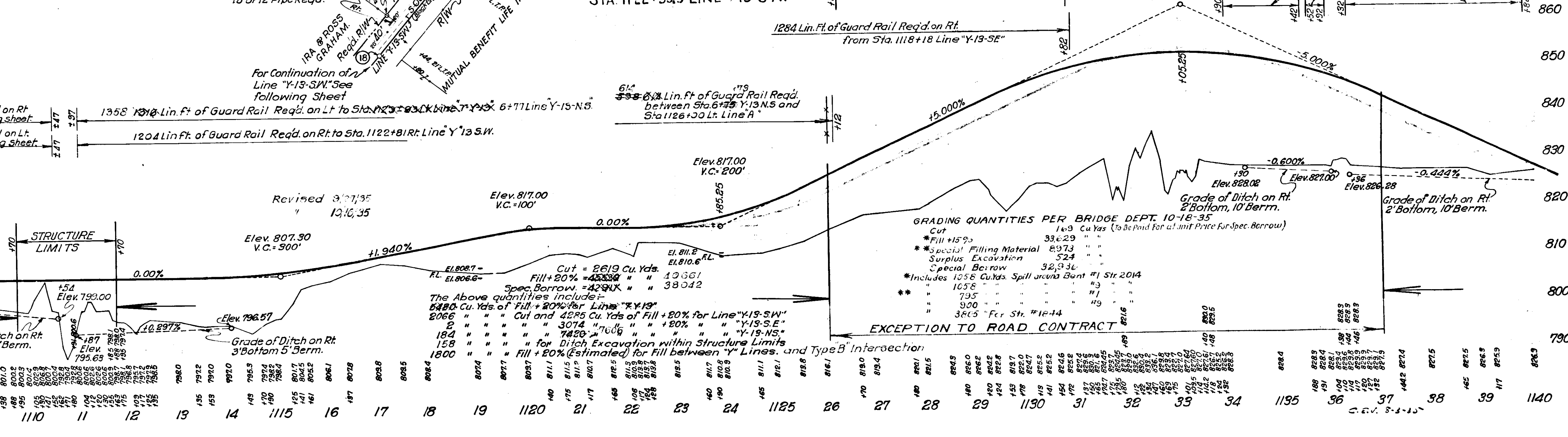
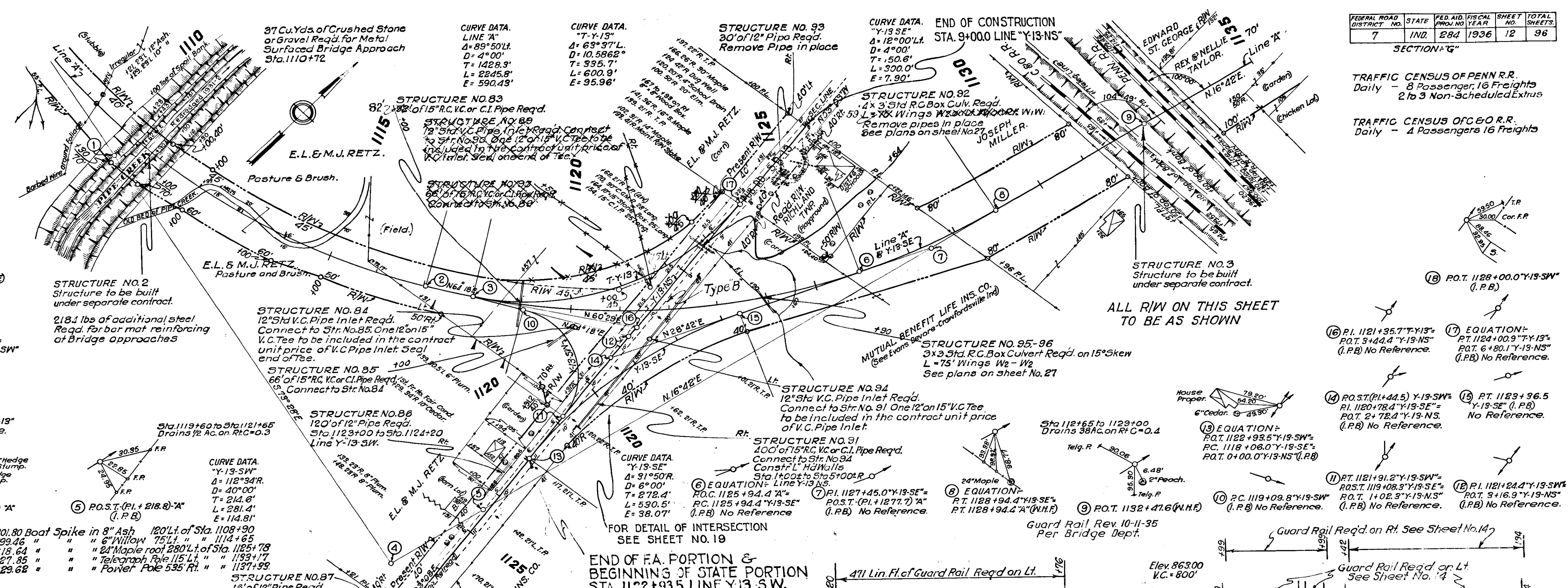
2283

FEDERAL ROAD DISTRICT NO.	STATE	FED. AID. PROJ. NO.	FISCAL YEAR	SHEET NO.	TOTAL SHEETS
7	IND.	284	1936	12	96

SECTION "G"

TRAFFIC CENSUS OF PENN. R.R.
Daily - 8 Passenger, 16 Freights
2 to 3 Non-Scheduled Extras

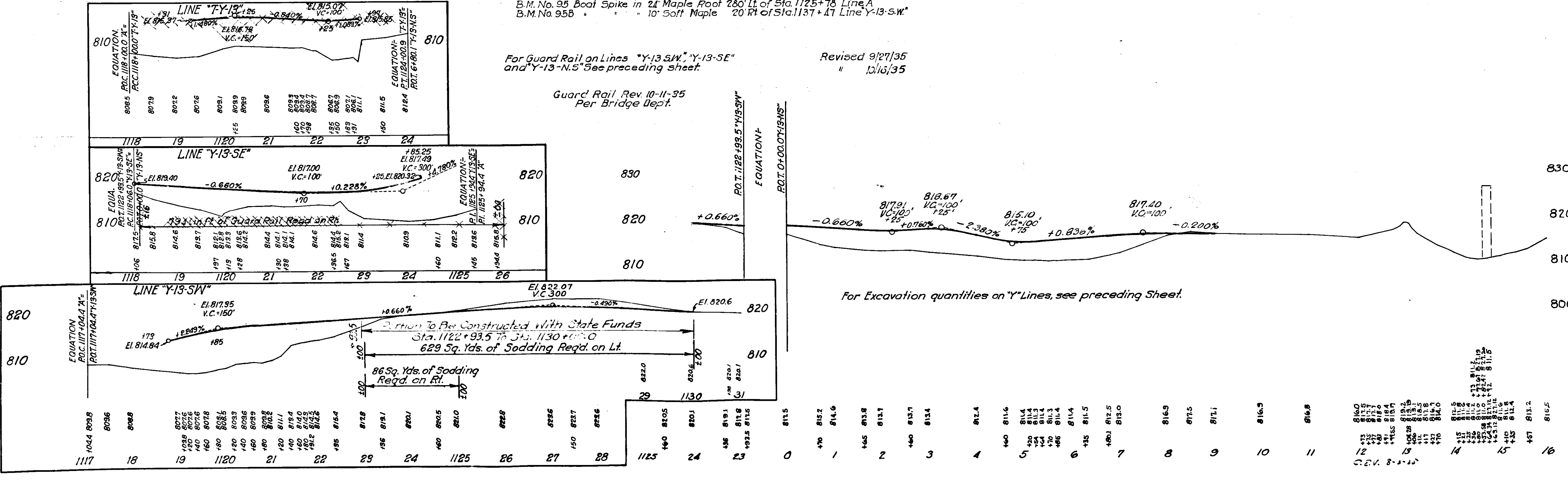
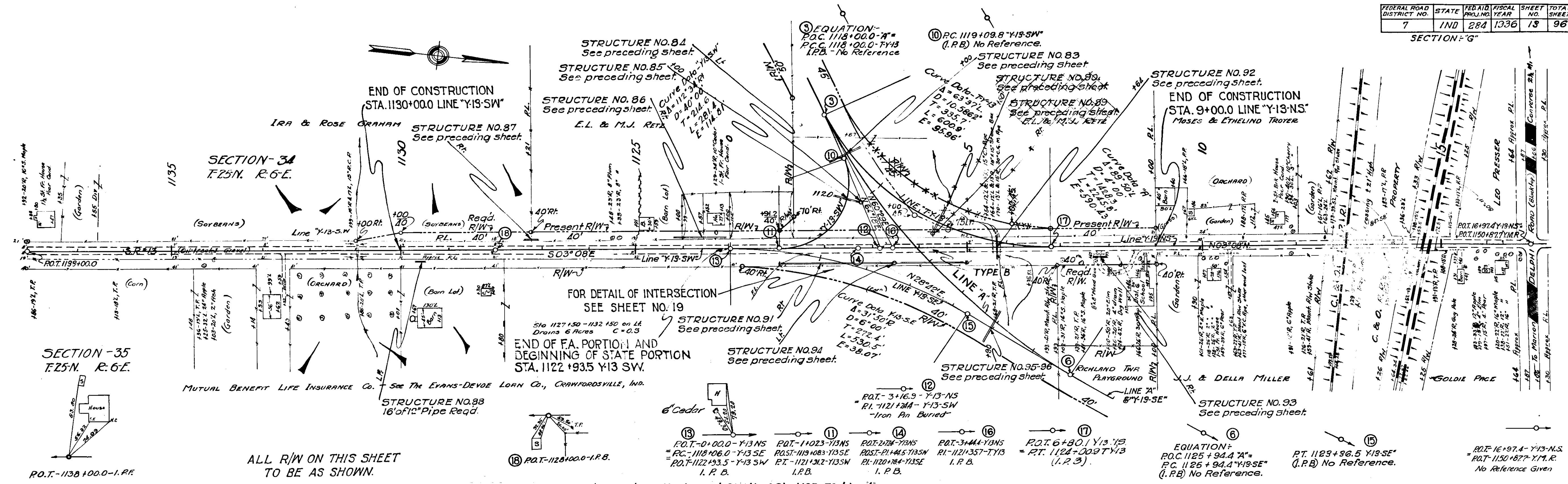
TRAFFIC CENSUS OF C. & O. R.R.
Daily - 4 Passengers 16 Freights



Station	Elev.	Station	Elev.	Station	Elev.	Station	Elev.
8	803.9	11	795.6	14	795.5	17	803.8
9	801.9	12	795.6	15	795.5	18	803.8
10	801.9	13	795.6	16	801.1	19	803.8
11	801.9	14	795.6	17	803.8	20	803.8
12	801.9	15	795.6	18	803.8	21	803.8
13	801.9	16	801.1	19	803.8	22	803.8
14	795.5	17	803.8	20	803.8	23	803.8
15	795.5	18	803.8	21	803.8	24	803.8
16	801.1	19	803.8	22	803.8	25	803.8
17	803.8	20	803.8	23	803.8	26	803.8
18	803.8	21	803.8	24	803.8	27	803.8
19	803.8	22	803.8	25	803.8	28	803.8
20	803.8	23	803.8	26	803.8	29	803.8
21	803.8	24	803.8	27	803.8	30	803.8
22	803.8	25	803.8	28	803.8	31	803.8
23	803.8	26	803.8	29	803.8	32	803.8
24	803.8	27	803.8	30	803.8	33	803.8
25	803.8	28	803.8	31	803.8	34	803.8
26	803.8	29	803.8	32	803.8	35	803.8
27	803.8	30	803.8	33	803.8	36	803.8
28	803.8	31	803.8	34	803.8	37	803.8
29	803.8	32	803.8	35	803.8	38	803.8
30	803.8	33	803.8	36	803.8	39	803.8
31	803.8	34	803.8	37	803.8	40	803.8
32	803.8	35	803.8	38	803.8	41	803.8
33	803.8	36	803.8	39	803.8	42	803.8
34	803.8	37	803.8	40	803.8	43	803.8
35	803.8	38	803.8	41	803.8	44	803.8
36	803.8	39	803.8	42	803.8	45	803.8
37	803.8	40	803.8	43	803.8	46	803.8
38	803.8	41	803.8	44	803.8	47	803.8
39	803.8	42	803.8	45	803.8	48	803.8
40	803.8	43	803.8	46	803.8	49	803.8
41	803.8	44	803.8	47	803.8	50	803.8
42	803.8	45	803.8	48	803.8	51	803.8
43	803.8	46	803.8	49	803.8	52	803.8
44	803.8	47	803.8	50	803.8	53	803.8
45	803.8	48	803.8	51	803.8	54	803.8
46	803.8	49	803.8	52	803.8	55	803.8
47	803.8	50	803.8	53	803.8	56	803.8
48	803.8	51	803.8	54	803.8	57	803.8
49	803.8	52	803.8	55	803.8	58	803.8
50	803.8	53	803.8	56	803.8	59	803.8
51	803.8	54	803.8	57	803.8	60	803.8
52	803.8	55	803.8	58	803.8	61	803.8
53	803.8	56	803.8	59	803.8	62	803.8
54	803.8	57	803.8	60	803.8	63	803.8
55	803.8	58	803.8	61	803.8	64	803.8
56	803.8	59	803.8	62	803.8	65	803.8
57	803.8	60	803.8	63	803.8	66	803.8
58	803.8	61	803.8	64	803.8	67	803.8
59	803.8	62	803.8	65	803.8	68	803.8
60	803.8	63	803.8	66	803.8	69	803.8
61	803.8	64	803.8	67	803.8	70	803.8

FEDERAL ROAD DISTRICT NO.	STATE	FED. AID PERCENT	FISCAL YEAR	SHEET NO.	TOTAL SHEETS
7	IND	284	1936	13	96

SECTION "G"



8 24

8 24

8 24

8 24

8 24

8 24

8 24

8 24

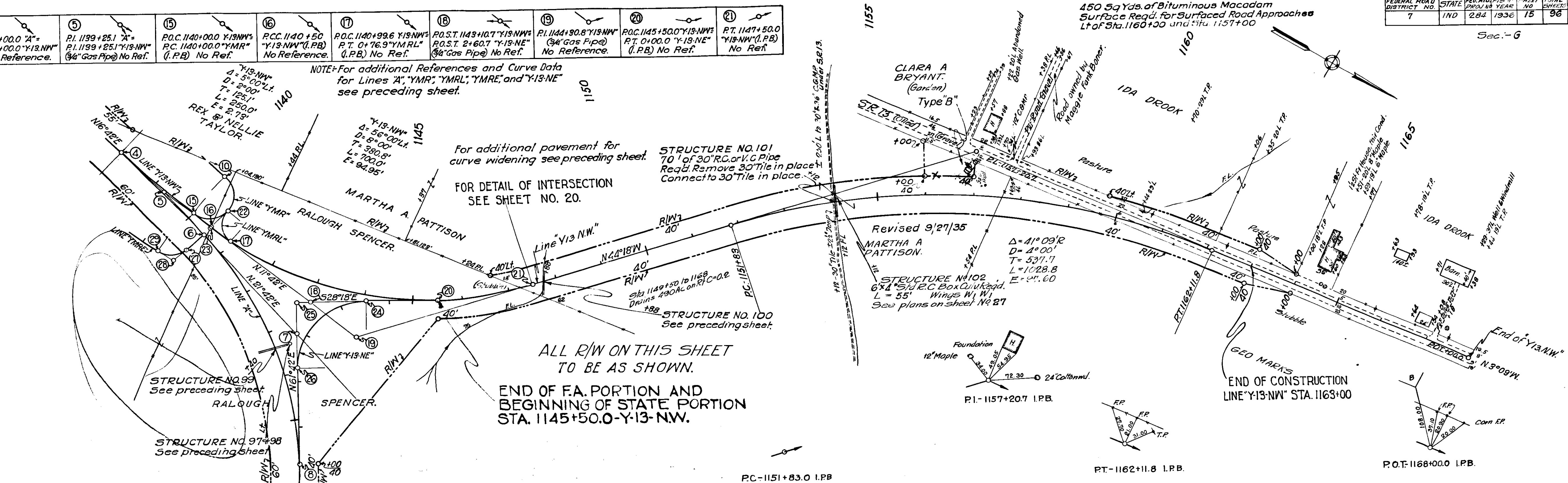
8 24

FEDERAL ROAD DISTRICT NO.	STATE	FED. AID FISCAL YEAR	SHEET NO.	TOTAL SHEETS
7	IND	284 1936	15	98

Sec. - 6

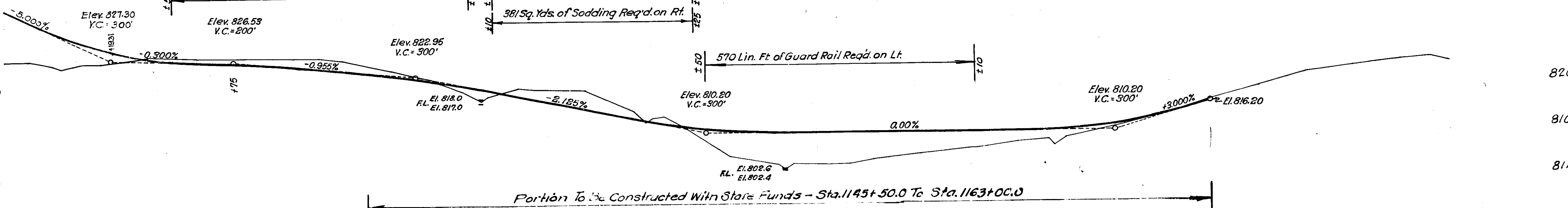
④	⑤	⑬	⑭	⑮	⑯	⑰	⑱	⑲	⑳	㉑
P.C. 1138+00.0 "A" P.C. 1138+00.0 "Y-13-NW" (I.P.B.) No Reference.	P.I. 1139+25.1 "A" P.I. 1139+25.1 "Y-13-NW" (3/4" Gas Pipe) No Ref.	P.O.C. 1140+00.0 "Y-13-NW" P.C. 1140+00.0 "YMR" (I.P.B.) No Ref.	P.C.C. 1140+50 "Y-13-NW" (I.P.B.) No Reference.	P.O.C. 1140+98.6 "Y-13-NW" P.T. 0+76.9 "YMR" (I.P.B.) No Reference.	P.O.S.T. 1143+04.7 "Y-13-NW" P.O.S.T. 2+60.7 "Y-13-NE" (3/4" Gas Pipe) No Ref.	P.I. 1144+30.8 "Y-13-NW" No Reference.	P.O.C. 1145+50.0 "Y-13-NW" P.T. 0+00.0 "Y-13-NE" (I.P.B.) No Ref.	P.T. 1147+50.0 "Y-13-NW" (I.P.B.) No Ref.		

NOTE: For additional References and Curve Data for Lines "A", "YMR", "YML", "YMR", and "Y-13-NE" see preceding sheet.



ALL R/W ON THIS SHEET TO BE AS SHOWN.
END OF F.A. PORTION AND BEGINNING OF STATE PORTION STA. 1145+50.0-Y-13-NW.

BM No 95	Elev. 818.64	Boat Spike	in Root of 24' Maple 280' Lt. Sta. 1125+78
BM No 96	827.85	Telegraph Pole	115' Lt. Sta. 1133+17
BM No 96Y	825.13	10' Pear	16' Lt. of Sta. 1166+65 Line Y-13-NW



Excavation included in balance from Sta 1137+00 to Sta 1145+50 Line "A" See preceding sheet.

Cut = 2852 Cu. Yds.
Fill + 25% = 3901 . . .
Spec. Borrow = 7049 . . .
The above quantities include 200 Cu. Yds. of Fill for Rd. Approach on Lt. of Sta. 1060+00 and 1057+00

38	165	827.3	39	119	825.7	140	826.6	150	827.1	160	827.6	170	828.0	180	828.5	190	829.0	200	829.5	210	830.0	220	830.5	230	831.0	240	831.5	250	832.0	260	832.5	270	833.0	280	833.5	290	834.0	300	834.5	310	835.0	320	835.5	330	836.0	340	836.5	350	837.0	360	837.5	370	838.0	380	838.5	390	839.0	400	839.5	410	840.0	420	840.5	430	841.0	440	841.5	450	842.0	460	842.5	470	843.0	480	843.5	490	844.0	500	844.5	510	845.0	520	845.5	530	846.0	540	846.5	550	847.0	560	847.5	570	848.0	580	848.5	590	849.0	600	849.5	610	850.0	620	850.5	630	851.0	640	851.5	650	852.0	660	852.5	670	853.0	680	853.5	690	854.0	700	854.5
----	-----	-------	----	-----	-------	-----	-------	-----	-------	-----	-------	-----	-------	-----	-------	-----	-------	-----	-------	-----	-------	-----	-------	-----	-------	-----	-------	-----	-------	-----	-------	-----	-------	-----	-------	-----	-------	-----	-------	-----	-------	-----	-------	-----	-------	-----	-------	-----	-------	-----	-------	-----	-------	-----	-------	-----	-------	-----	-------	-----	-------	-----	-------	-----	-------	-----	-------	-----	-------	-----	-------	-----	-------	-----	-------	-----	-------	-----	-------	-----	-------	-----	-------	-----	-------	-----	-------	-----	-------	-----	-------	-----	-------	-----	-------	-----	-------	-----	-------	-----	-------	-----	-------	-----	-------	-----	-------	-----	-------	-----	-------	-----	-------	-----	-------	-----	-------	-----	-------

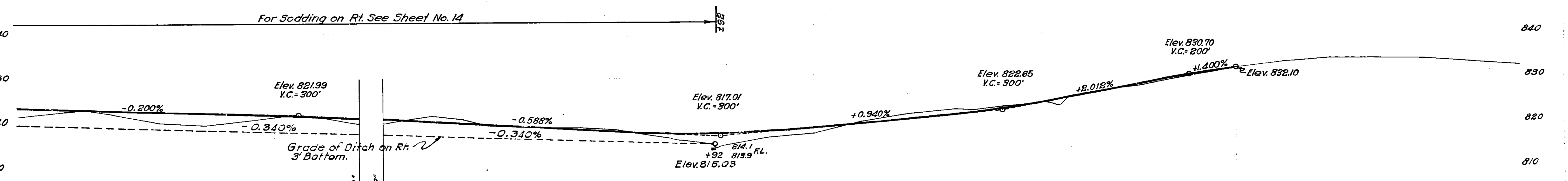
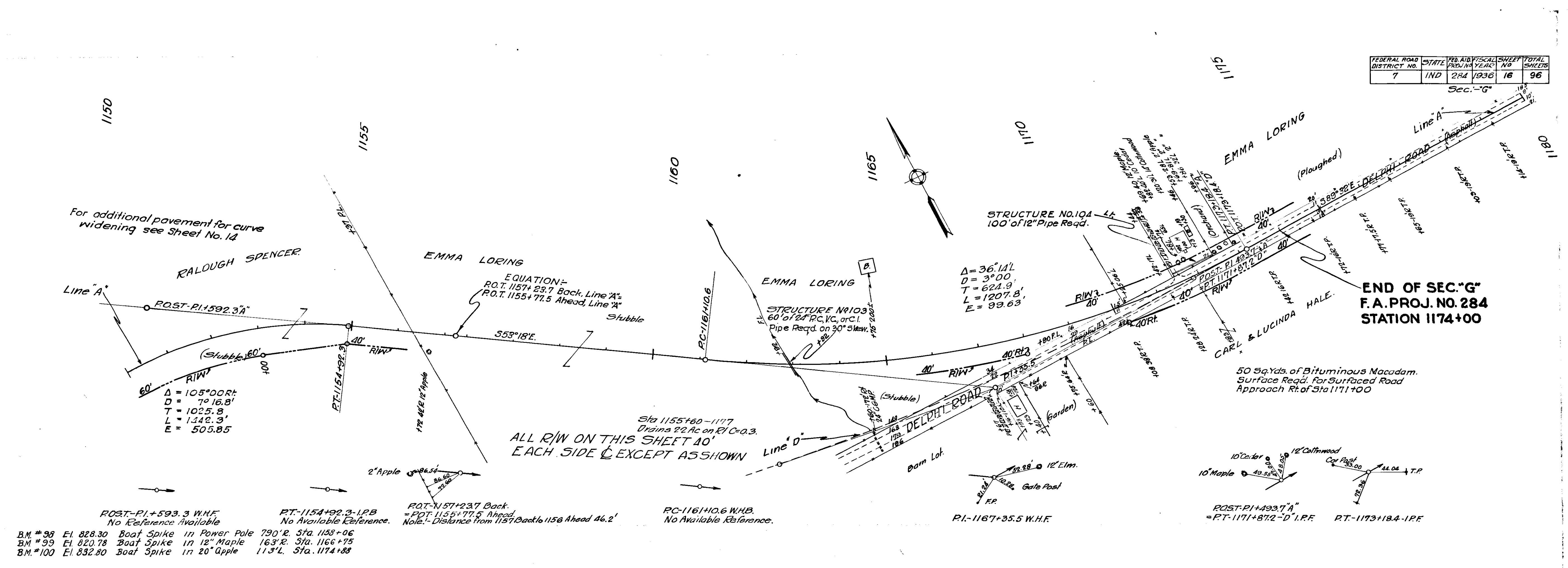
FEDERAL ROAD DISTRICT NO.	STATE	FED. AID FISCAL YEAR	SHEET NO.	TOTAL SHEETS
7	IND	284	1936	16 96

E. H. Wright, Engineer
 9-17-31
 M. J. Gowers, 6-13-31

2273

E. H. Wright, Engineer
 2-22-32
 C. M. Snyder

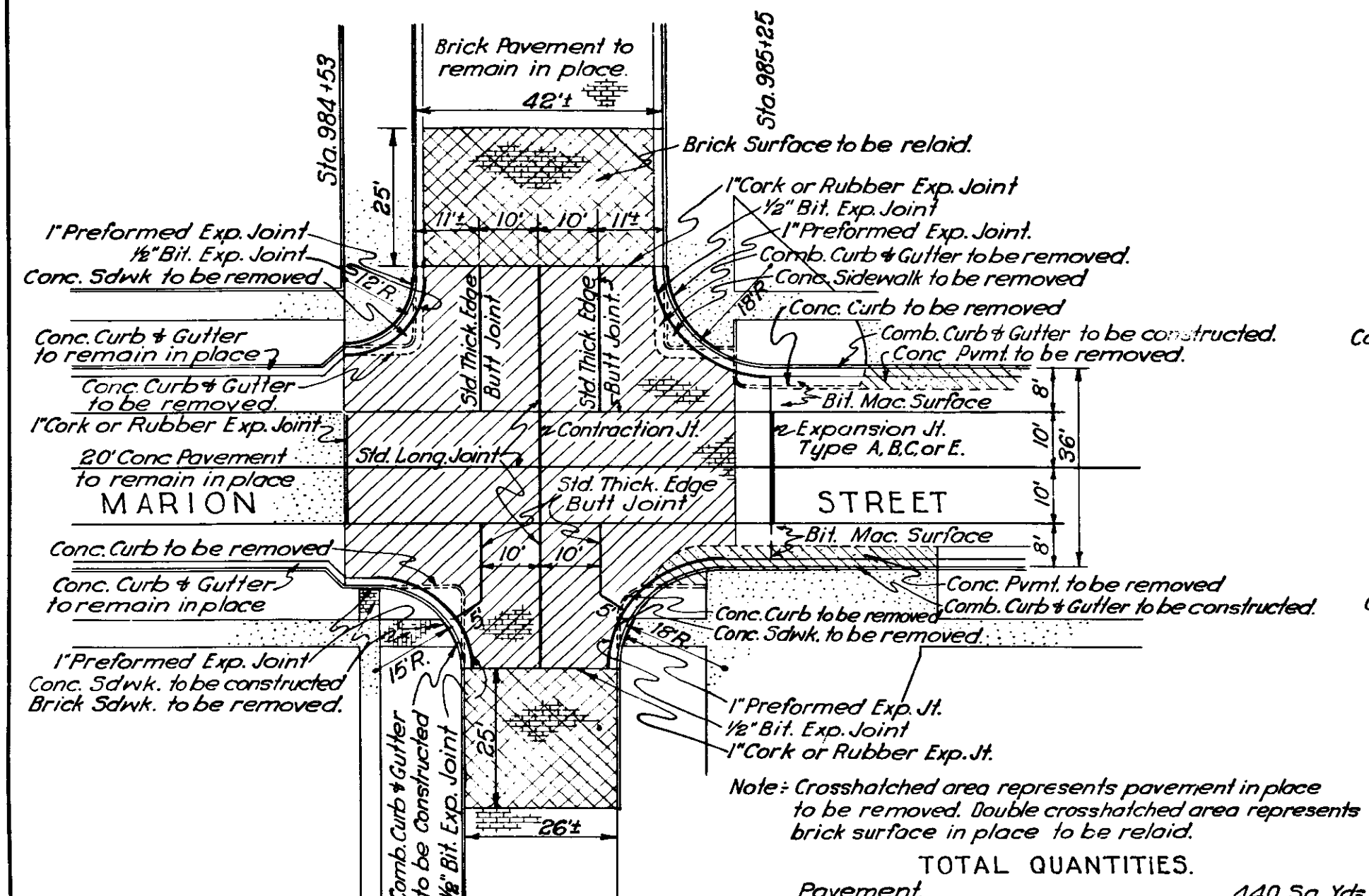
2276



Cut = 2244 Cu.Yds.
 Fill +25% = 3520 " "
 Spec. Borrow = 1276 " "

Cut = 1971 Cu.Yds.
 Fill +25% = 1959 " "
 Waste = 12 " "

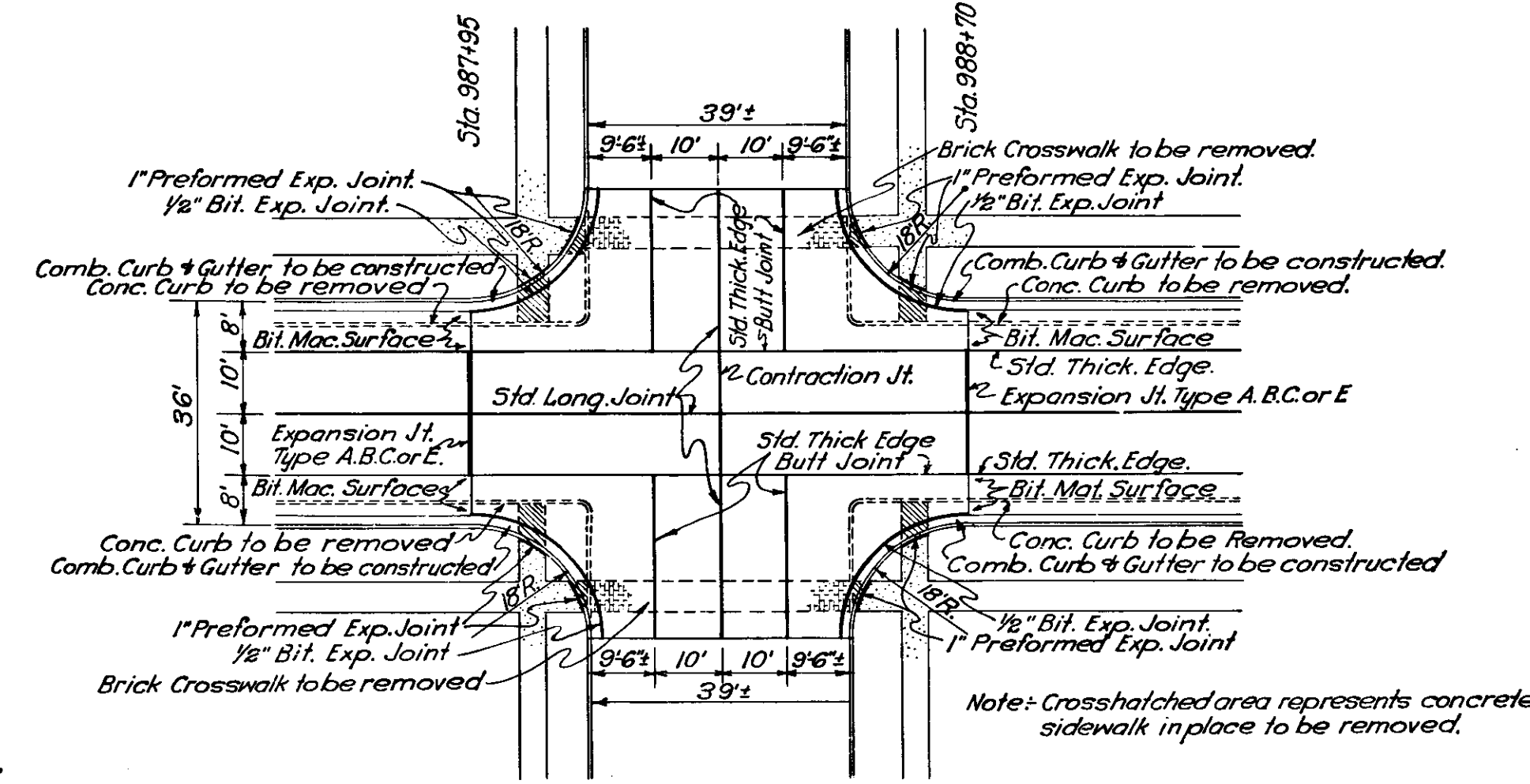
1150	51	52	53	54	1155	56	57	58	59	1160	61	62	63	64	1165	66	67	68	69	1170	71	72	73	74	1175	76	77	78	79	1180
------	----	----	----	----	------	----	----	----	----	------	----	----	----	----	------	----	----	----	----	------	----	----	----	----	------	----	----	----	----	------



JEFFERSON STREET
 STA. 984+53 to STA. 985+25
 Scale 1"=20'-0"

TOTAL QUANTITIES

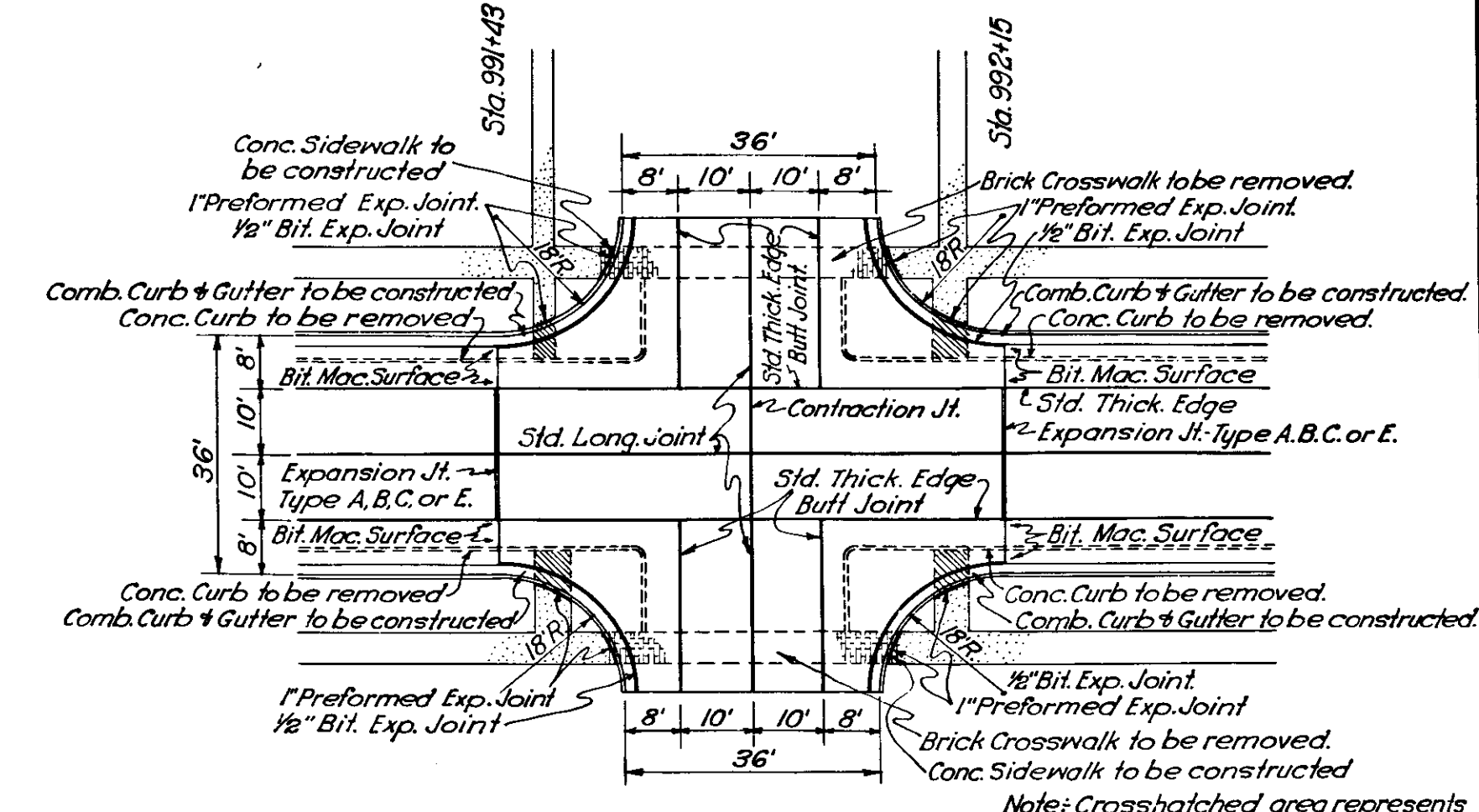
Pavement	440 Sq. Yds.
Brick Surface to be relaid	189 Sq. Yds.
Combined Curb & Gutter	114 Lin. Ft.
Expansion Joint-Type A,B,C or E	20 Lin. Ft.
Contraction Joint	20 Lin. Ft.
1" Cork or Rubber Expansion Joint	88 Lin. Ft.
1" Preformed Expansion Joint	63 Lin. Ft.
1/2" Bituminous Expansion Joint	112 Lin. Ft.
Pavement Removal	10 Sq. Yds.
Brick Surface Removal	414 Sq. Yds.
Concrete Sidewalk Removal	8 Sq. Yds.
Concrete Curb Removal	78 Lin. Ft.
Concrete Curb & Gutter Removal	52 Lin. Ft.
Concrete Sidewalk	10 Sq. Yds.



MADISON STREET
 STA. 987+95 to STA. 988+70
 Scale 1"=20'-0"

TOTAL QUANTITIES

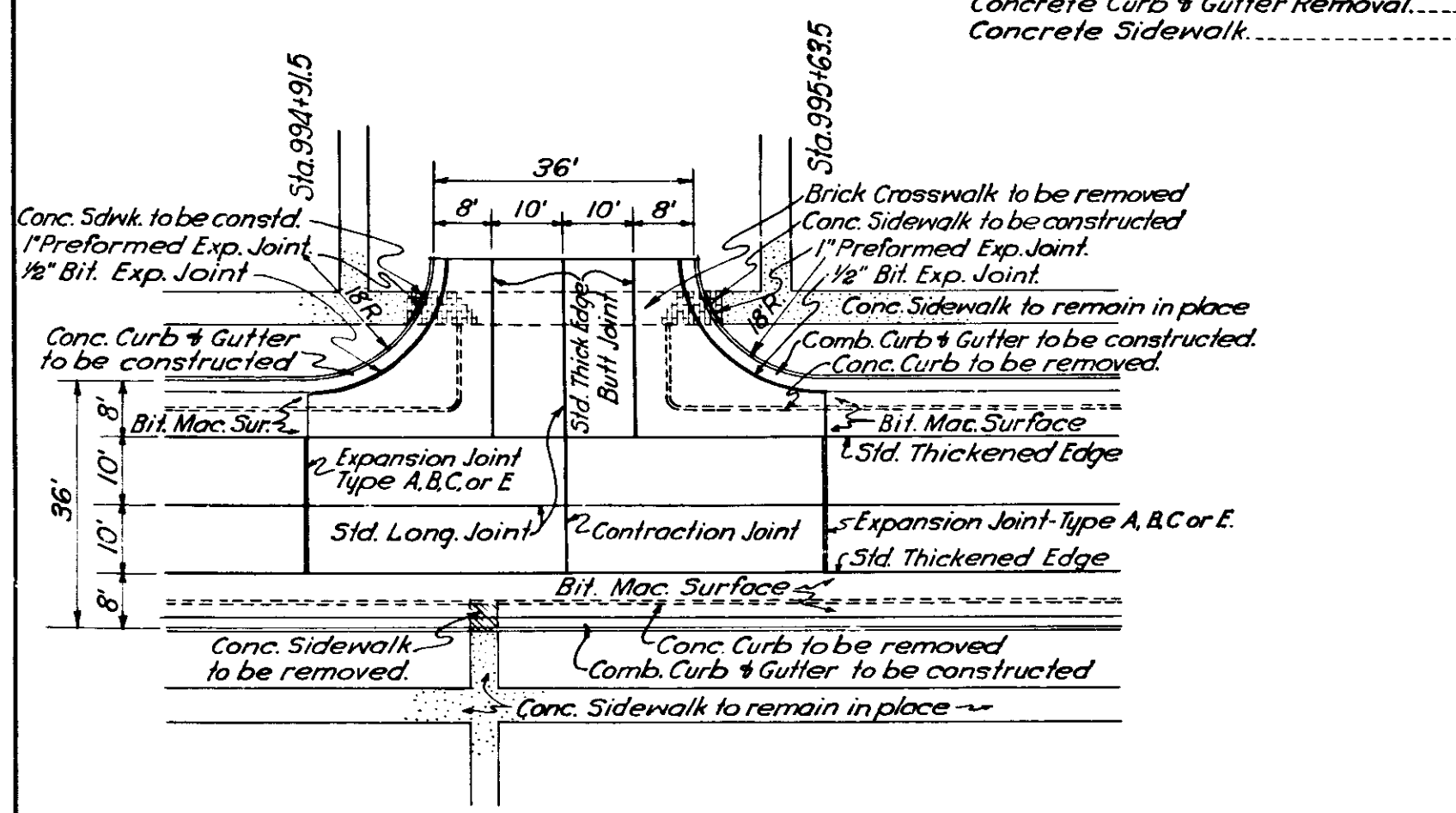
Pavement	467 Sq. Yds.
Expansion Joint-Type A,B,C or E	40 Lin. Ft.
Contraction Joint	40 Lin. Ft.
Combined Curb & Gutter	113 Lin. Ft.
1" Preformed Expansion Joint	43 Lin. Ft.
1/2" Bituminous Expansion Joint	123 Lin. Ft.
Concrete Sidewalk Removal	15 Sq. Yds.
Concrete Curb Removal	160 Lin. Ft.



WASHINGTON STREET
 STA. 991+43 to STA. 992+15
 Scale 1"=20'-0"

TOTAL QUANTITIES

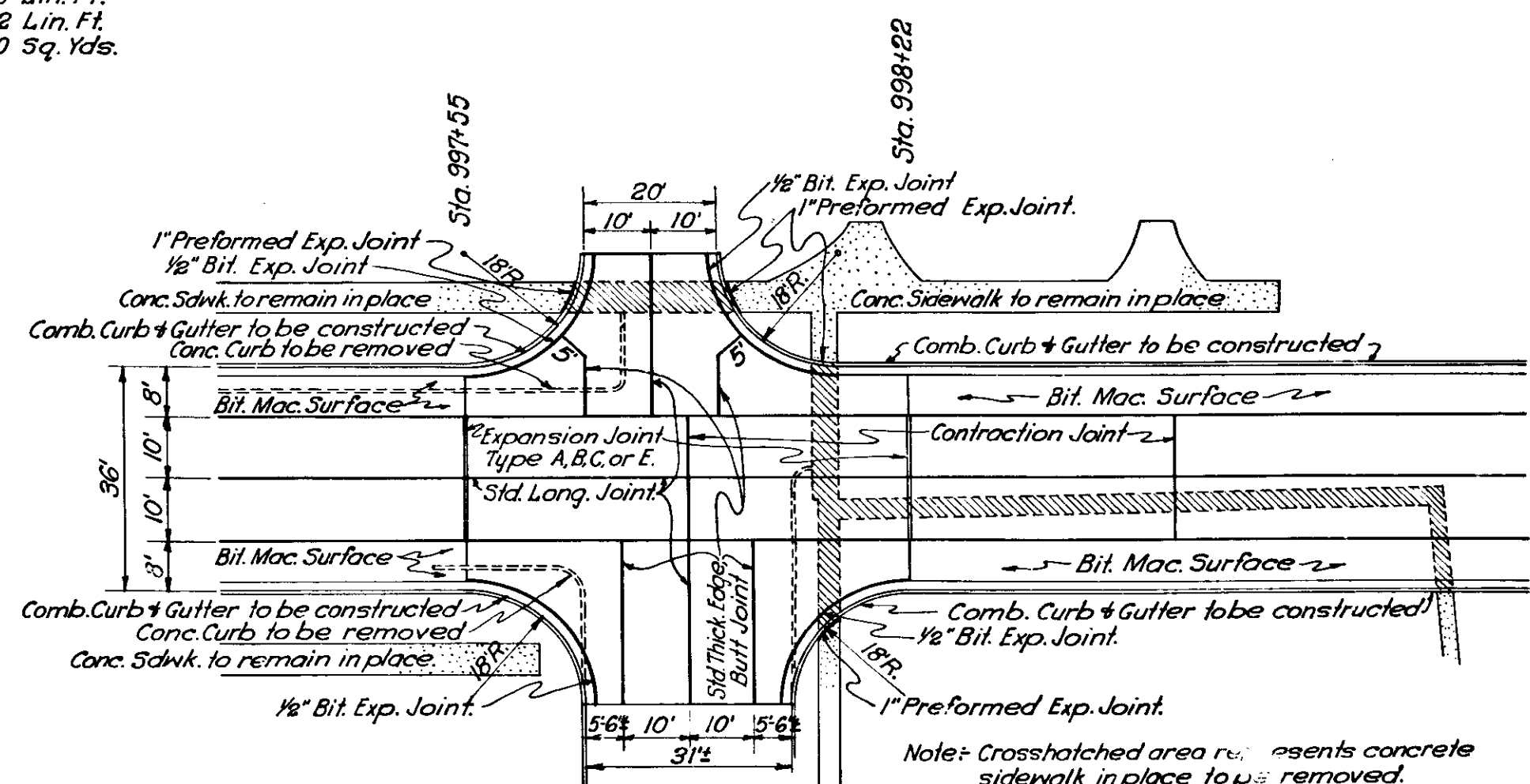
Pavement	449 Sq. Yds.
Expansion Joint-Type A,B,C or E	40 Lin. Ft.
Contraction Joint	20 Lin. Ft.
Combined Curb & Gutter	113 Lin. Ft.
1" Preformed Expansion Joint	42 Lin. Ft.
1/2" Bituminous Expansion Joint	123 Lin. Ft.
Concrete Sidewalk	3 Sq. Yds.
Concrete Sidewalk Removal	12 Sq. Yds.
Concrete Curb Removal	137 Lin. Ft.



EWARD STREET
 STA. 994+91.5 to STA. 995+63.5
 Scale 1"=20'-0"

TOTAL QUANTITIES

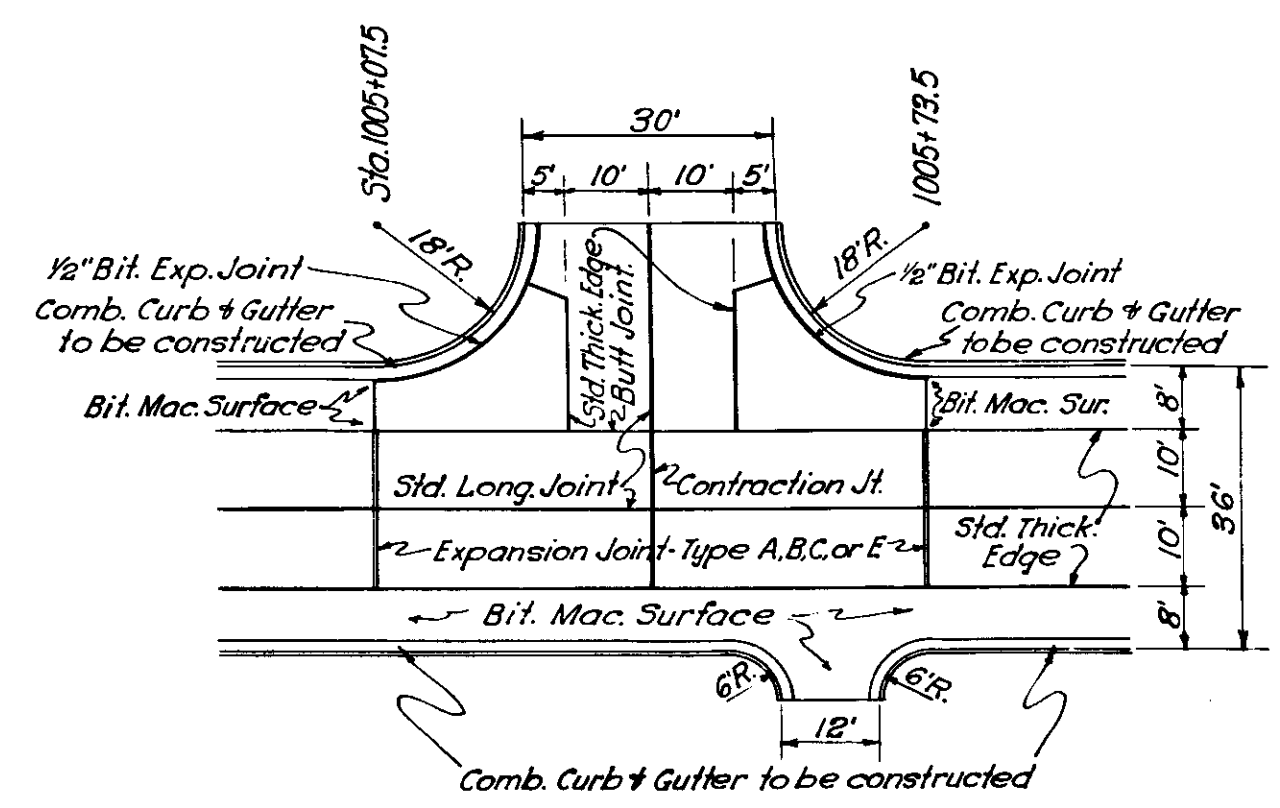
Pavement	502 Sq. Yds.
Combined Curb & Gutter	57 Lin. Ft.
Concrete Sidewalk	2 Sq. Yds.
Expansion Joint-Type A,B,C or E	40 Lin. Ft.
1" Preformed Expansion Joint	15 Lin. Ft.
1/2" Bituminous Expansion Joint	62 Lin. Ft.
Contraction Joint	20 Lin. Ft.
Bituminous Macadam Surface	52 Sq. Yds.
Concrete Sidewalk Removal	2 Sq. Yds.
Concrete Curb Removal	138 Lin. Ft.



OHIO STREET
 STA. 997+55 to STA. 998+22
 Scale 1"=20'-0"

TOTAL QUANTITIES

Pavement	380 Sq. Yds.
Combined Curb & Gutter	113 Lin. Ft.
Expansion Joint-Type A,B,C or E	40 Lin. Ft.
1" Preformed Expansion Joint	19 Lin. Ft.
1/2" Bituminous Expansion Joint	123 Lin. Ft.
Contraction Joint	20 Lin. Ft.
Concrete Sidewalk Removal	34 Sq. Yds.
Concrete Curb Removal	113 Lin. Ft.



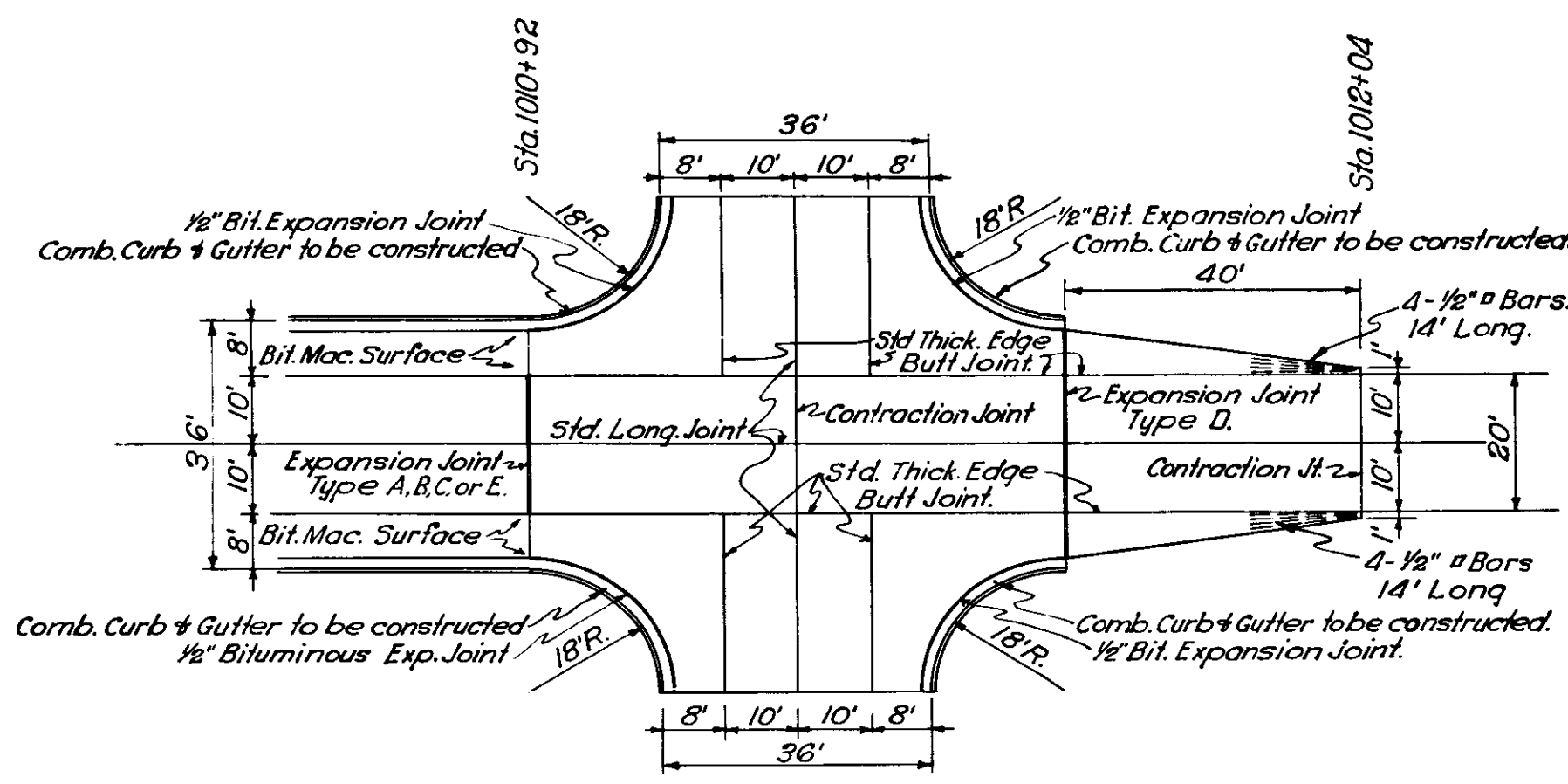
PUBLIC STREET
 STA. 1005+07.5 to STA. 1005+73.5
 Scale 1"=20'-0"

TOTAL QUANTITIES

Pavement	271 Sq. Yds.
Combined Curb & Gutter	118 Lin. Ft.
Bituminous Macadam Surface	58 Sq. Yds.
Expansion Joint-Type A,B,C or E	40 Lin. Ft.
1/2" Bituminous Expansion Joint	62 Lin. Ft.
Contraction Joint	20 Lin. Ft.

FEDERAL ROAD DISTRICT NO.	STATE	VEG. AID PROJ. NO.	FISCAL YEAR	SHEET NO.	TOTAL SHEETS
7	IN		1936	18	96

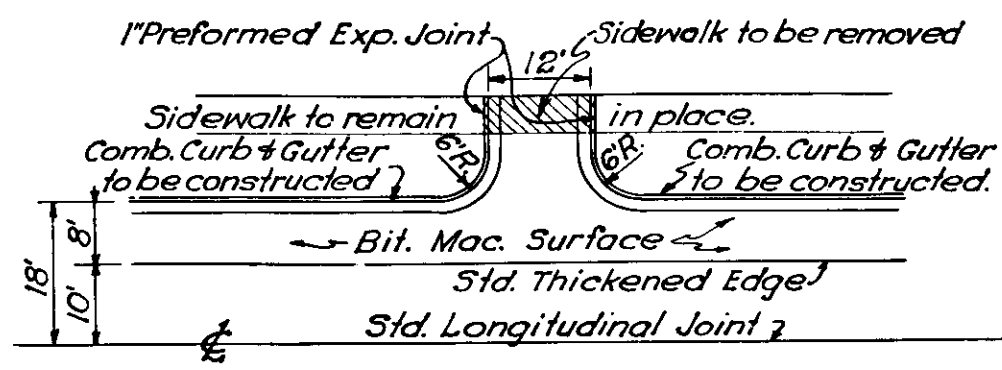
SECTION "G"



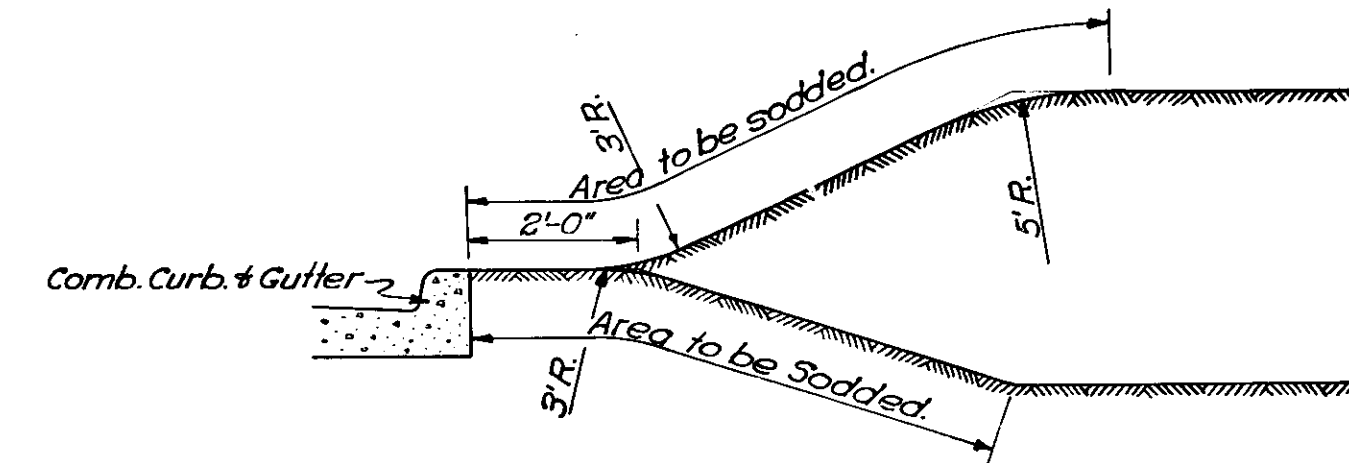
FIRST STREET
STA. 1010+92 to STA. 1012+04
Scale 1"=20'-0"

TOTAL QUANTITIES.

Pavement.....	585 Sq. Yds.
Combined Curb & Gutter.....	113 Lin. Ft.
Expansion Joint - Type A,B,C or E.....	20 Lin. Ft.
Expansion Joint - Type D.....	33 Lin. Ft.
1/2" Bituminous Expansion Joint.....	153 Lin. Ft.
Contraction Joint.....	40 Lin. Ft.
Finishing Shoulders & Ditches.....	40 Lin. Ft.
Reinforcing Steel.....	96 Lbs.

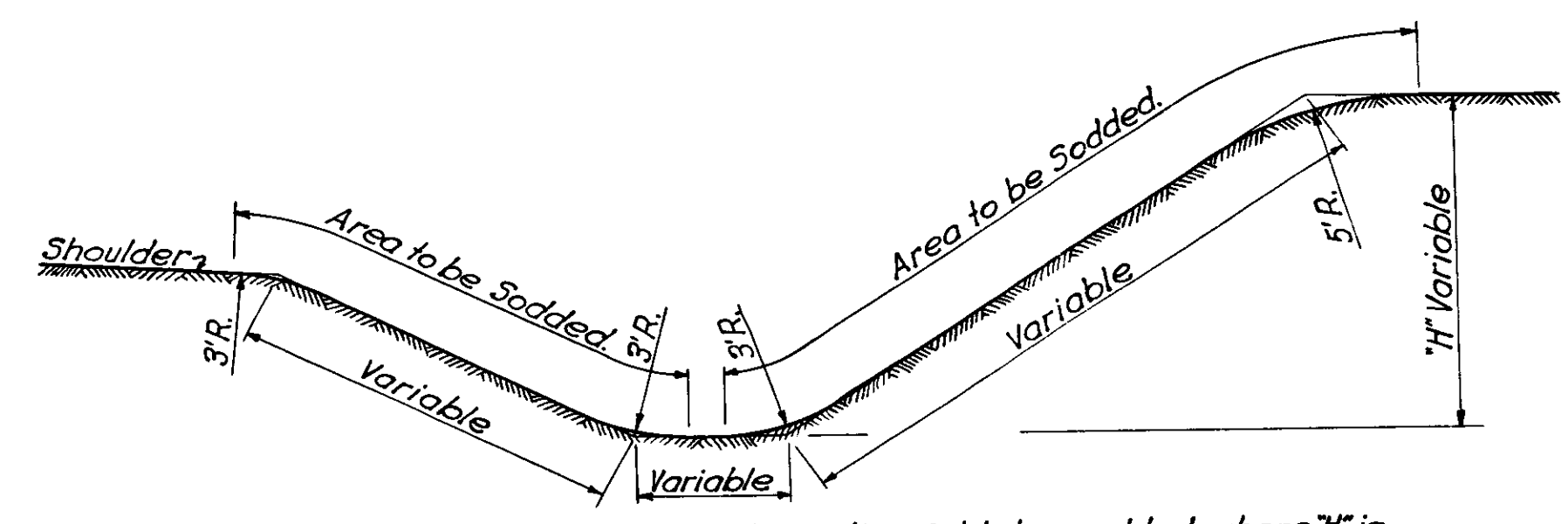


TYPICAL ALLEY INTERSECTION
STA. 986+59 Rt. & Lt.
STA. 990+05 Rt. & Lt.
STA. 1009+62 Lt.
Scale 1"=20'-0"



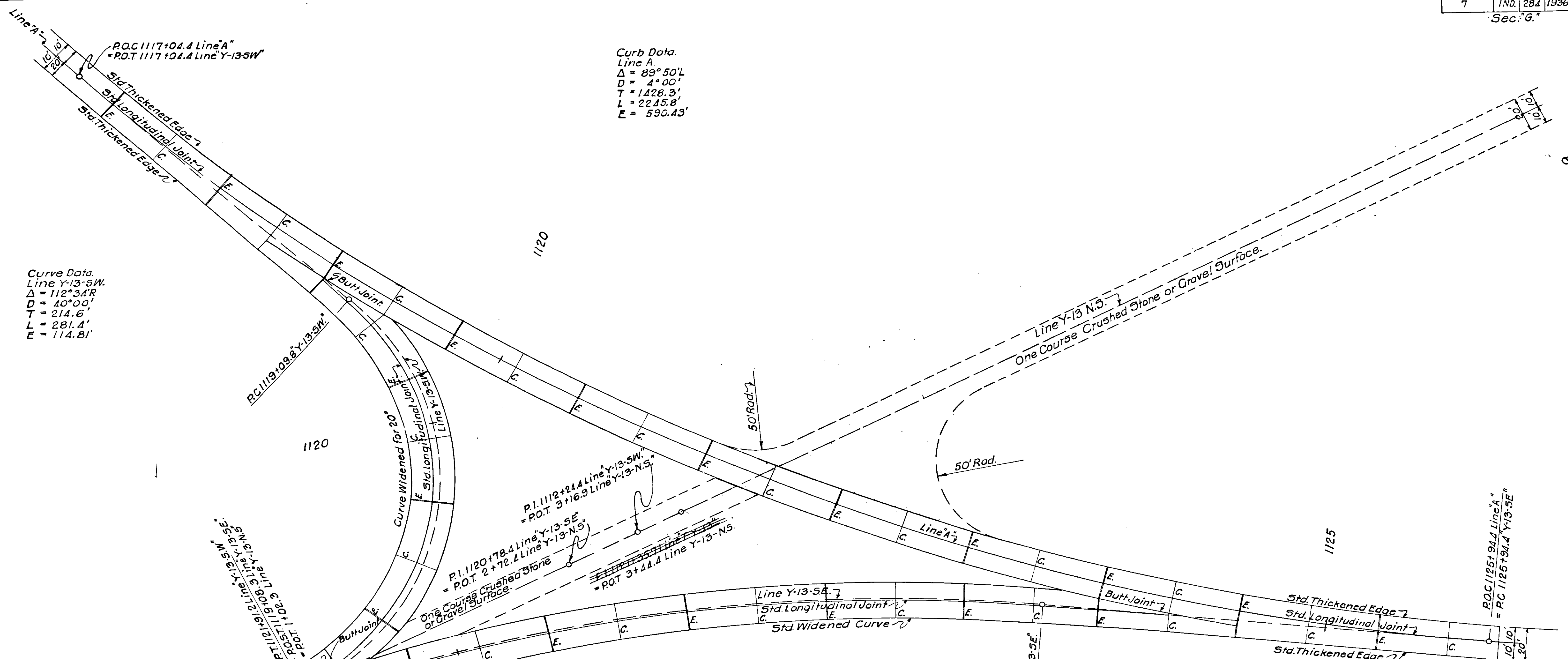
Note: All cuts and fills to be sodded.

STA. 984+53 to STA. 1011+64
Scale 1/2"=1'-0"



Note: Entire Cut to be sodded where 'H' is 4'-8" or more at any part of cut.

SPECIAL SODDING DETAILS
Scale 1/2"=1'-0"



Curve Data
 Line A
 $\Delta = 89^{\circ}50' L$
 $D = 4^{\circ}00'$
 $T = 1400.3'$
 $L = 2245.8'$
 $E = 590.43'$

Curve Data
 Line Y-13-SW
 $\Delta = 112^{\circ}34' R$
 $D = 40^{\circ}00'$
 $T = 214.6'$
 $L = 281.4'$
 $E = 114.81'$

NOTE: All Joints marked "C" are Contraction Joints and all Joints marked "E" are Type "D" Expansion Joints except as otherwise noted.

Curve Data
 Line Y-13-SE
 $\Delta = 31^{\circ}50' R$
 $D = 6^{\circ}00'$
 $T = 272.4'$
 $L = 530.5'$
 $E = 38.07'$

DETAIL OF INTERSECTION

Line A Sta. 1117+04.4 To Sta. 1126+00.0
 Line Y-13-SW Sta. 1117+04.4 To Sta. 1124+00.0
 Line Y-13-NS Sta. 1+02.3 To Sta. 9+00.0
 Line Y-13-SE Sta. 1118+06.0 To Sta. 1125+34.4

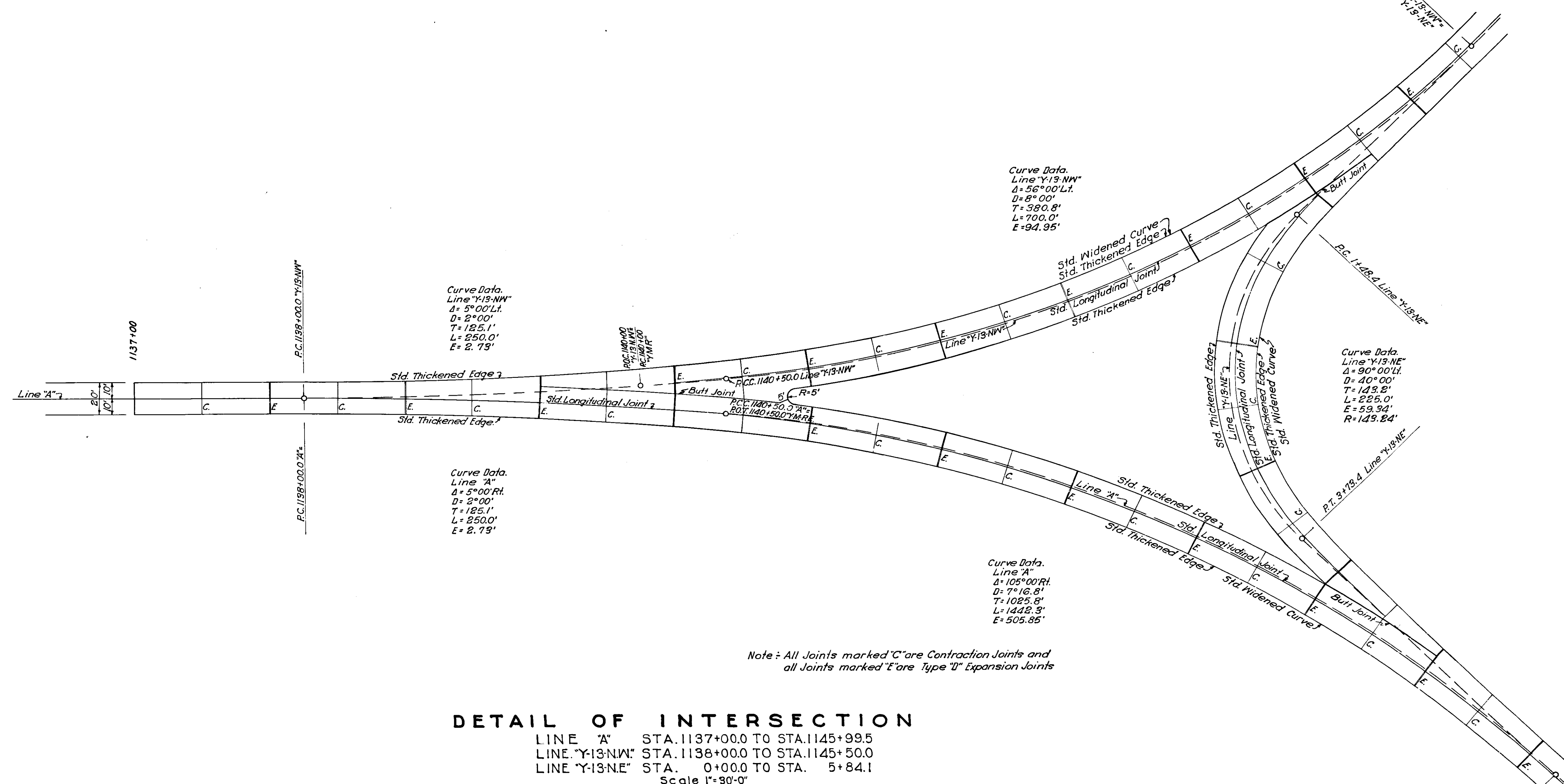
Total Quantities

Pavement	4550 Sq.Yds.
Expansion Joint Type A, B, C or E	20 Lin Ft.
Expansion Joint Type D	484 Lin Ft.
Contraction Joint	502 Lin Ft.
Crushed Stone or Gravel Surface	322 Cu. Yds.
Finishing Shoulders & Ditches	2270 Lin Ft.

Scale 1" = 50'-0"

Revised 9/27/35
 CJC-35

Portion To Be Constructed With State Funds Sta. 1122+93.5 To 1130+00.0
 Expansion Joint Type A, B, C or E
 Std. Thickened Edge
 Std. Longitudinal Joint
 Line Y-13-SW and Line Y-13-NS
 Sta. 1121+00.0 To Sta. 1122+93.5
 Sta. 1122+93.5 To Sta. 1124+00.0
 Sta. 1124+00.0 To Sta. 1125+34.4



DETAIL OF INTERSECTION

LINE "A" STA. 1137+00.0 TO STA. 1145+99.5
 LINE "Y-13-NW" STA. 1138+00.0 TO STA. 1145+50.0
 LINE "Y-13-NE" STA. 0+00.0 TO STA. 5+84.1
 Scale 1"=30'-0"

TOTAL QUANTITIES.

Pavement.....	4,460 Sq. Yds.
Expansion Joint-Type D.....	474 Lin. Ft.
Contraction Joint.....	500 Lin. Ft.
Finishing Shoulders and Ditches.....	1570 Lin. Ft.

ESTIMATE OF QUANTITIES FOR F.A. FUNDS

BRIDGE AND CULVERT DATA

PA 1936 21 96
SECTION 6

BASE & BINDER COURSES										COURSE	AGGREGATE	COURSE	AGGREGATE	COURSE	AGGREGATE	COURSE	AGGREGATE	COURSE	AGGREGATE	COURSE	AGGREGATE	COURSE	AGGREGATE	COURSE	AGGREGATE	COURSE	AGGREGATE	COURSE	AGGREGATE	COURSE	AGGREGATE	COURSE	AGGREGATE	COURSE	AGGREGATE	COURSE	AGGREGATE	COURSE	AGGREGATE
CONCRETE	PORTLAND CEMENT	WATER	SAND	GRAVEL	CRUSHED STONE	CRUSHED BRICK	CRUSHED TILE	CRUSHED PAVEMENT	CRUSHED ASPHALT																														

FOR BITUMINOUS CONCRETE SURFACE COURSE																																		
CONCRETE (FOR BRICK SURFACE)																																		
1	1045775		Structure to be built under Separate Contract																															

FOR BITUMINOUS CONCRETE SURFACE COURSE																																		
CONCRETE (FOR BRICK SURFACE)																																		
11	984534	12"	R.C. or V.C. Pipe																															

SURFACE COURSES																																		
CONCRETE (FOR BRICK SURFACE)																																		
36	991970		Sewer Pipe																															

EXCAVATION																																		
33	228		2280																															

CURB & GUTTER																																		
61	1008401		30																															

PIPE																																		
84	120400		84																															

REMARKS																																		
11	984534	12"	R.C. or V.C. Pipe																															

Structures to be shown with State Funds. Revised 10/1/35.

ESTIMATE OF QUANTITIES FOR STATE FUNDS

BRIDGE AND CULVERT DATA

PA 284 1936 22 96
6

BASE & BINDER COURSES	CONCRETE		SAND		GRANULAR		OTHER	
	TONS	CU YDS	TONS	CU YDS	TONS	CU YDS	TONS	CU YDS
FOR ROCK ASPHALT SURFACE								
CONCRETE								
WATER BOUND MACADAM	100	241			7023	1695	891	
BITUMINOUS CONC. AH								
BITUMINOUS CONC. AC								
BIT. COATED AGG. EA								
BIT. COATED AGG. LA								
BIT. COATED AGG. T								
RECONSTRUCTED								
FOR BITUMINOUS CONC. SURFACE								
CONCRETE								
WATER BOUND MACADAM	1675	561	241		7023	1695	814	
BITUMINOUS CONC. AH								
BITUMINOUS CONC. AC								
BIT. COATED AGG. EA								
BIT. COATED AGG. LA								
BIT. COATED AGG. T								
RECONSTRUCTED								
CONCRETE (For Brick Surface TEL FORD)								

SURFACE COURSES	CONCRETE		SAND		GRANULAR		OTHER	
	TONS	CU YDS	TONS	CU YDS	TONS	CU YDS	TONS	CU YDS
CONCRETE								
BIT. FILLED VIT. BRICK								
WATER BOUND ASPHALT								
BITUMINOUS CONC. AH								
BITUMINOUS CONC. AC								
BIT. COATED AGG. EA								
BIT. COATED AGG. LA								
BIT. COATED AGG. T								
BITUMINOUS MULCH								
BITUMINOUS RETREAD								
BITUMINOUS TREATMENT								
ROAD OIL TREATMENT								
STONE OR GRAVEL								
CRACK CONCRETE								
CRACK CONCRETE SURFACE PATCHING								

EXCAVATION CU. YDS	SPECIAL BORROW CU. YDS	SPECIAL FILL MATERIAL CU. YDS	FINISHING SHOULDERS & DITCHES LIN. FT.	SALVAGED ROAD METAL CU. YDS	CONCRETE FOR STRUCTURE CLASS "D" CU. YDS	REINFORCING STEEL FOR STRUCTURES LBS.	TIMBER PILING ROAD LIN. FT.	BITUMINOUS MACADAM SHOULDERS LIN. FT.	SHOULDER DRAINS LIN. FT.	PAVED SIDE DITCH LIN. FT.	PAVED GUTTER LIN. FT.

CATCH BASIN & LID	INLETS ADJUSTED TO GRADE	MAN HOLES	MANHOLE COVERS ADJUSTED TO GRADE	CONCRETE CURB LIN. FT.	CURB REMOVAL LIN. FT.	STONE CURB LIN. FT.	COMBINED CURB & GUTTER LIN. FT.	MONUMENT	RIGHT OF WAY MARKERS (REINF. CONC)

SIDE WALK SQ. YDS	CROSSWALKS SQ. YDS	EXPANSION JOINTS LIN. FT.	CONTRACTION JOINTS LIN. FT.	PAVEMENT REMOVAL SQ. YDS	BRICK PAVEMENT RELAID SQ. YDS	SURFACE REMOVAL SQ. YDS	BLASTING PRELIM. LIN. FT.	BLASTING FINAL LIN. FT.	RIP RAP SQ. YDS	ROUTED RIP SQ. YDS	RELAID RIP SQ. YDS

GUARD RAIL		FURNISHING		INSTALLING	
CONCRETE	STEEL	CONCRETE	STEEL	CONCRETE	STEEL

PIPE	LENGTH														
	6"	8"	10"	12"	15"	18"	24"	30"	36"	42"	48"	54"	60"	72"	84"
PIPE															
PIPE															
PIPE															
PIPE															
PIPE															
PIPE															
PIPE															
PIPE															
PIPE															

LOCATION	DESCRIPTION	LENGTH	HEIGHT	WINGS	FLOW		CONCRETE CLASS	STEEL REINFORCING LBS.	REMARKS
					UP STREAM	DOWN STREAM			
114900	15" RC V.C. or C.I. Pipe	400			W/W	W/W	1.76		Connect to Str. No 94 Constr. L" Hd Walls.
114900	5" RC Box Culv.	50					3.52		Remove Pipes in place
114900	12" Std. V.C. Pipe Inlet	75					4.503		Remove Pipe in place
114900	12" Std. V.C. Pipe Inlet	75					4.503		Connect to Str. No 91 one 12" on 15" V.C. Tee, to be included in contract unit price of V.C. Pipe Inlet.
114900	15" Pipe	36					1.63		Not included in this Contract
114900	12" Std. V.C. Pipe Inlet	75					1.70		Connect to Str. No 99 one 12" on 15" V.C. Tee to be included in the contract unit price of V.C. Pipe Inlet. Seal one end of Tee.
114900	15" RC V.C. or C.I. Pipe	50					0.92		Connect to Str. No 98
114900	15" RC V.C. or C.I. Pipe 15" Skew	50					46.75	5400	Construct L" Hd Wall on Inlet. Remove 10' of 30" Tile in place. Connect to 30" Tile in place
114900	6" RC or V.C. Pipe	70					3.57		
114900	6" Std. RC Box Culv.	55					0.34		
114900	24" RC V.C. or C.I. Pipe 30" Skew	60							
114900	12" Pipe	100							

* Structures to be Constructed With State Funds

Revised 3/21/65
3/21/65