

INDEX

SHEET NO. 1	TITLE SHEET.
SHEET NO. 2	STANDARD CROSS SECTIONS. C & G. OCT. 29 Rev. DEC. 1929 Rev. FEB. 14, 1930.
SHEET NO. 3-11	PLAN AND PROFILE.
SHEET NO. 12	BRIDGE AND CULVERT DATA - ESTIMATE OF QUANTITIES FOR CONCR. BIT. FILLED BRICK & BIT. CONC. PAVTMS.
SHEET NO. 13-13A	MISCELLANEOUS STANDARDS (SHEET 'A' MAY 1931) (SHEET 'B' APRIL 1931). BIT. A REVOCED BY IN.V.C.O. 1931.
SHEET NO. 14	STD. REINF. CONC. BOX CULVERT. JAN. 7, 1926.
SHEET NO.	STD. REINF. CONC. CULV. - SLAB TOP TYPE WITHOUT FILL (10'-0" TO 18'-0" SPAN)
SHEET NO.	STD. REINF. CONC. CULV. - SLAB TOP TYPE UNDER FILL (1'-0" TO 5'-0" (10'-0" TO 20'-0" SPAN)
SHEET NO. 17-19	STD. REINF. CONC. CULV. - SLAB AND GIRDER WITHOUT FILL (20'-0" SPAN) 24'-0" ROADWAY. JAN. 31, 1927.
SHEET NO. 15	STD. REINF. CONC. CULV. - SLAB TOP TYPE WITHOUT FILL (10'-0" TO 20'-0" SPAN) 15' SKEW. 24'-0" RDWY. JULY 11, 1930.
SHEET NO.	STD. REINF. CONC. CULV. - SLAB TOP TYPE UNDER FILL (1'-0" TO 5'-0" (10'-0" TO 20'-0" SPAN) 15' SKEW.
SHEET NO.	STD. REINF. CONC. CULV. - SLAB TOP TYPE WITHOUT FILL (10'-0" TO 20'-0" SPAN) 30' SKEW.
SHEET NO.	STD. REINF. CONC. CULV. - SLAB TOP TYPE UNDER FILL (1'-0" TO 5'-0" (10'-0" TO 20'-0" SPAN) 30' SKEW.
SHEET NO. 16	STD. REINF. CONC. CULV. - SLAB TOP TYPE WITHOUT FILL (10'-0" TO 20'-0" SPAN) 45' SKEW. JULY 11, 1930.
SHEET NO.	STD. REINF. CONC. CULV. - SLAB TOP TYPE UNDER FILL (5'-0" TO 10'-0" SPAN) GRAVITY TYPE.
SHEET NO.	STD. REINF. CONC. CULV. - SLAB TOP TYPE WITHOUT FILL (12'-0" TO 20'-0" SPAN) GRAVITY TYPE.
SHEET NO. 2-A	STD. CROSS SECTION C & G 'B' ADOPTED AUG. 1931. REV. NOV. 3, 1931.
SHEET NO. 12-A	ESTIMATE OF QUANTITIES FOR ROCK ASPHALT & ASPHALTIC MACADAM PAVEMENTS.
SHEET NO.	STD. ARCH CULV.
SHEET NO.	STD. PLAN FOR FILLING IN PEAT MARSHES.
SHEET NO. 20	DATA FOR SUPER-ELEVATING AND WIDENING OF CURVES. MARCH 1930.
SHEET NO. 21	STD. DETOUR SIGNS. JAN. 1927.
SHEET NO. 22-72	CROSS SECTIONS.

STATE OF INDIANA
STATE HIGHWAY COMMISSION

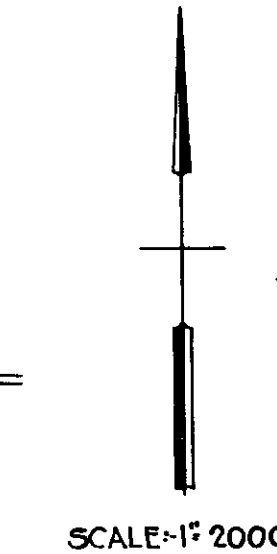
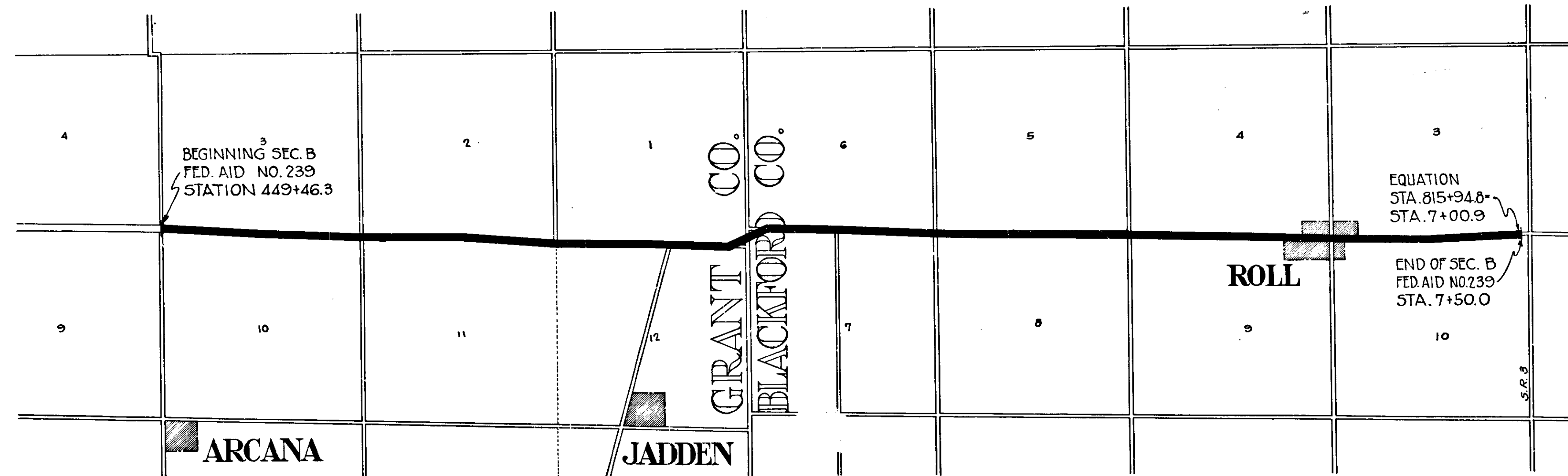
PLAN AND PROFILE OF PROPOSED
STATE HIGHWAY
F.A. PROJ. NO. 239 SEC. B
MARION-ROLL ROAD.

BEGINNING AT THE SOUTH EAST CORNER OF SECTION 4 TOWNSHIP 24 NORTH
RANGE 9 EAST IN GRANT COUNTY AND RUNNING EAST TO A POINT APPROX.
250' WEST OF THE C. OF S.R. 3 IN BLACKFORD COUNTY.

GROSS LENGTH-6.950 MI.
NET LENGTH-6.950 MI.
SCALES-

(LONG- 1"=100' PROFILE (HORIZ- 1"=100'
PLAN (TRANS- 1"=100' VERT- 1"=10'

MAX. GRADE=2.10%

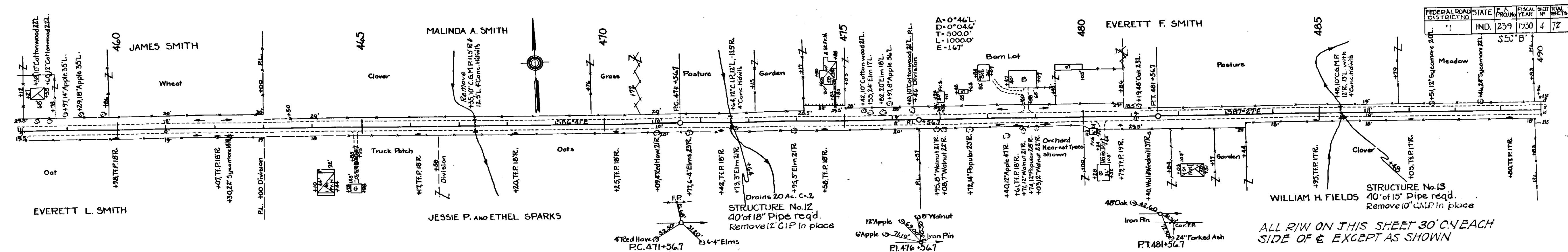


APPROVED 2-10-31
 [Signature]
 DIRECTOR, INDIANA STATE HIGHWAY COMMISSION
 APPROVED 2-10-31
 [Signature]
 CHIEF ENGINEER, INDIANA STATE HIGHWAY COMMISSION
 RECOMMENDED FOR APPROVAL
 [Redacted]
 DISTRICT ENGINEER, BUREAU OF PUBLIC ROADS
 RECOMMENDED FOR APPROVAL
 [Redacted]
 CHIEF ENGINEER, BUREAU OF PUBLIC ROADS
 APPROVED
 [Redacted]
 DIRECTOR, BUREAU OF PUBLIC ROADS

INDIANA STATE HIGHWAY STANDARD SPECIFICATIONS,
DATED 1923, OF FILE WITH THE U. S. BUREAU OF PUBLIC ROADS,
TO BE USED WITH THESE PLANS, ALSO SUPPLEMENTAL SPECIFICATIONS,
DRAFT OF NOV. 1, 1928 AND NOV. 1, 1930. ALSO IND. STATE HIGHWAY STD. SPECIFICATION "B" ADOPTED, APR. 1931.

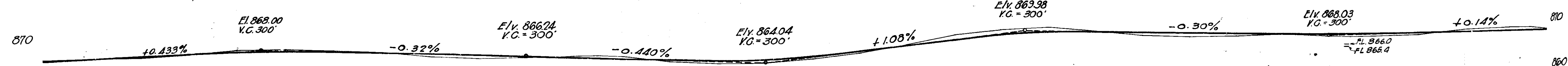
77-1-23-31

FEDERAL ROAD DISTRICT NO.	STATE	PROJECT NO.	FISCAL YEAR	SHEET NO.	TOTAL SHEETS
1	IND.	239	1930	4	72



B.M. No. 54 - El. 066.62 - Boat Spike in 24' Apple, 35' L of Sta. 459+30.
 B.M. No. 55 - El. 068.94 - North East corner of Bottom conc. step of one story house, 36' R of Sta. 464+30.
 B.M. No. 56 - El. 067.53 - Boat Spike in 16' Apple, 50' L of Sta. 470+12.
 B.M. No. 57 - El. 062.00 - Boat Spike in 12' Hackberry, 70' R of Sta. 481+18.
 B.M. No. 58 - El. 068.23 - Boat Spike in Corner Fence Post, 30' R of Sta. 489+24.

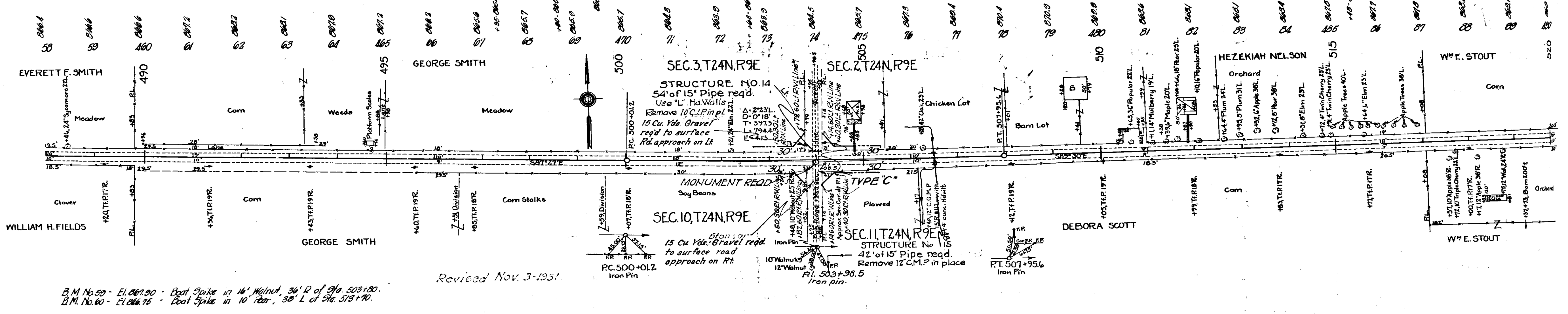
ALL R/W ON THIS SHEET 30' C/W EACH SIDE OF E EXCEPT AS SHOWN



Cut	= 1649	cu. yd.	Cut	= 773	cu. yd.
Fill + 20%	= 1638	"	Fill + 20%	= 727	"
Borrow	= 49	"	Waste	= 46	"

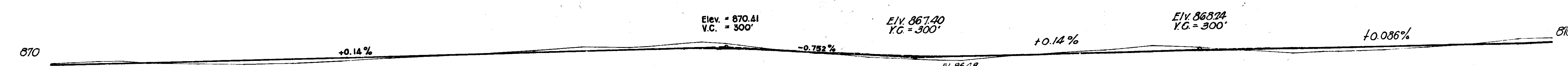
Cut	= 726	cu. yd.
Fill + 20%	= 734	"
Borrow	= 8	"

The above quantities include 100 Cu. Yds. of Fill for road Approach on Rt. and Lt. of Sta. 449+46

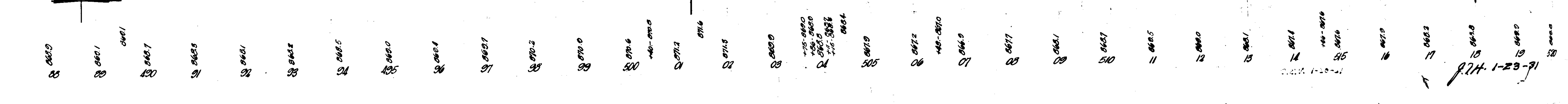


B.M. No. 59 - El. 067.00 - Boat Spike in 16' Walnut, 34' R of Sta. 503+20.
 B.M. No. 60 - El. 066.75 - Boat Spike in 10' Pear, 35' L of Sta. 513+10.

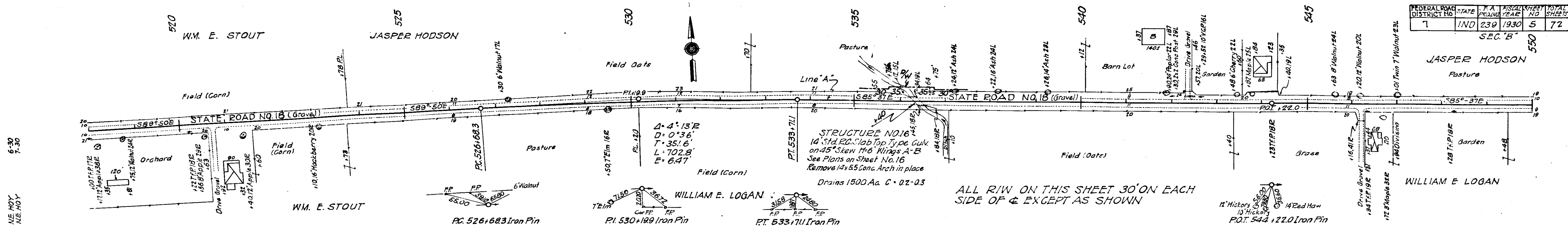
Revised Nov. 3-1931.



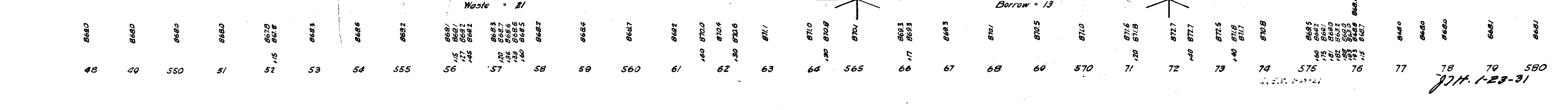
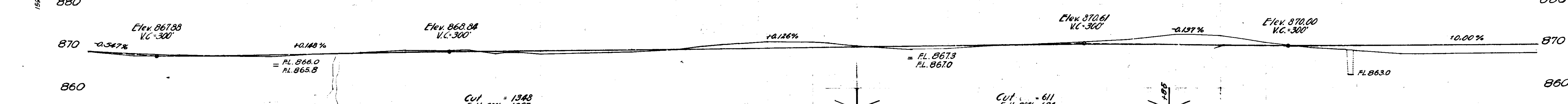
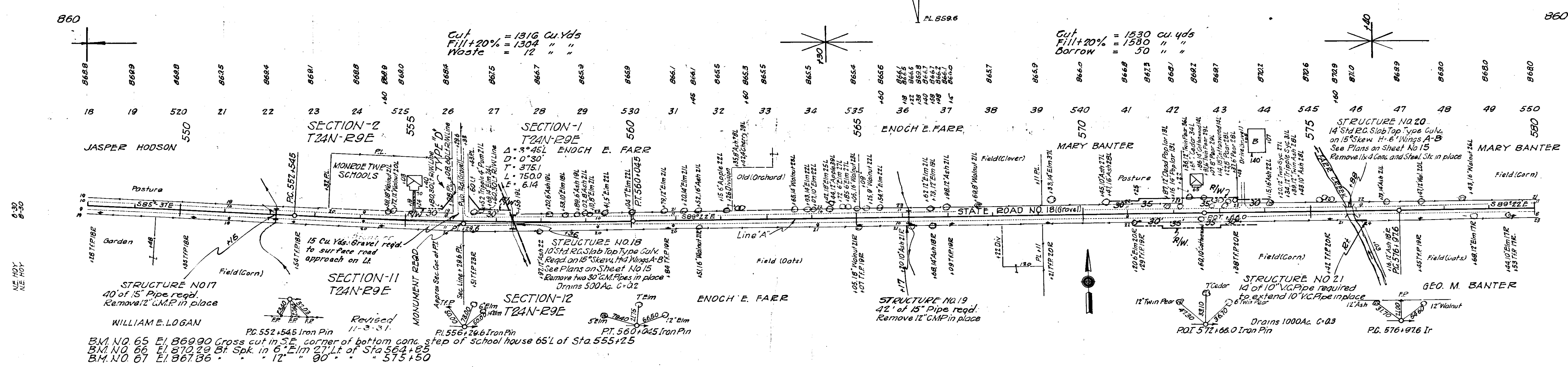
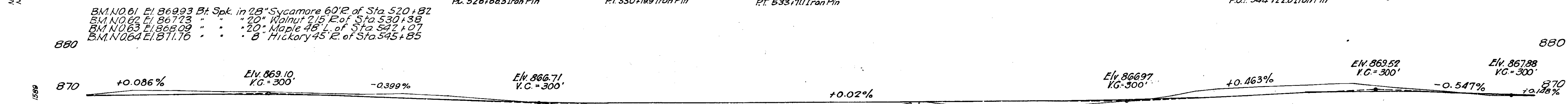
Cut	= 924	cu. yd.	Cut	= 1348	cu. yd.
Fill + 20%	= 910	"	Fill + 20%	= 1294	"
Waste	= 14	"	Waste	= 54	"



FEDERAL ROAD DISTRICT NO.	STATE	PROJECT NO.	DATE	NO.	SHEET
7	IND	239	1930	5	72

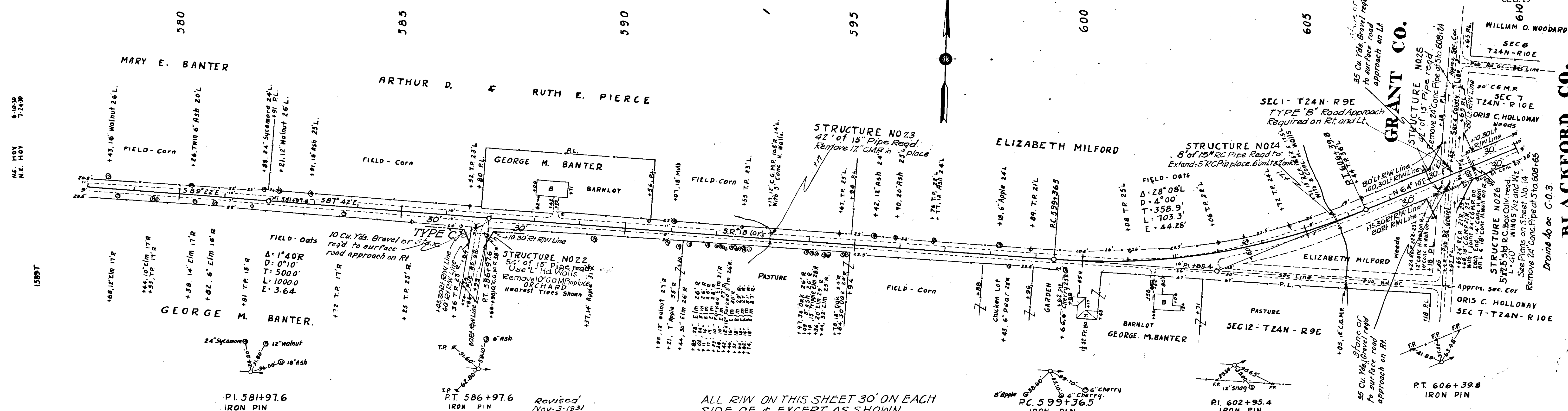


ALL R/W ON THIS SHEET 30' ON EACH SIDE OF & EXCEPT AS SHOWN



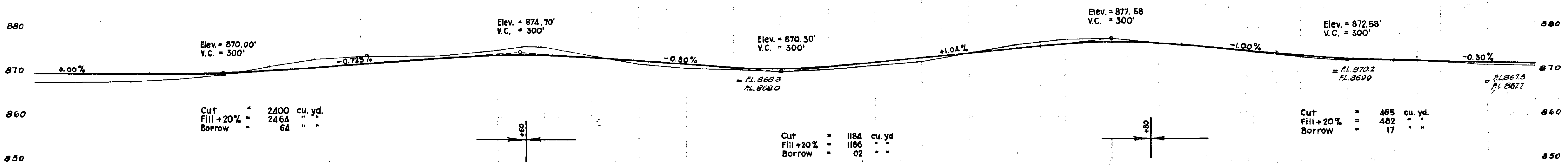
771-1-23-31

FEDERAL ROAD DISTRICT NO.	STATE	PROJECT YEAR	NO. SHEETS	TOTAL SHEETS
7	IND	239	1930	6



ALL RIW ON THIS SHEET 30' ON EACH SIDE OF & EXCEPT AS SHOWN

B.M. 68 El. 877.63 Boat Spike in 14" Pine 50' R of Sta 588+38
 B.M. 69 El. 875.53 " " " 12" Apple 38' R " " 598+44
 B.M. 70 El. 873.46 " " " 8" Hickory 135' R " " 607+58



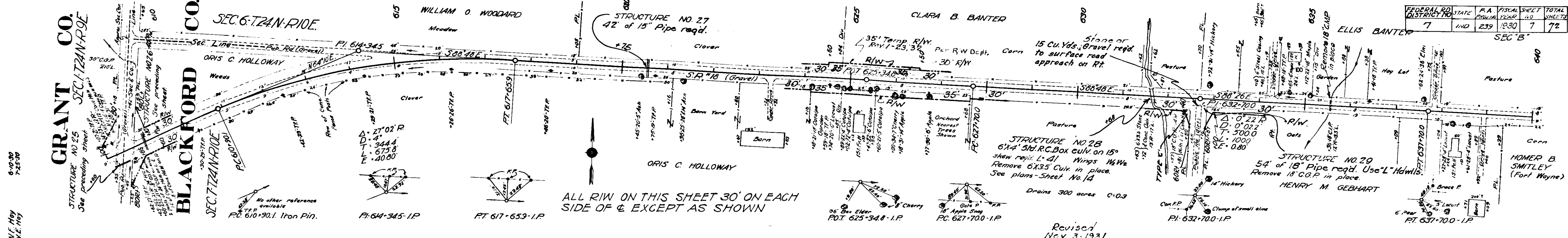
868.0	868.1	868.1	868.6	869.4	869.7	870.5	871.5	872.2	872.8	873.9	874.9	875.2	876.1	875.9	875.9	875.0	870.7	870.6	872.2	872.8	871.6	872.4	874.4	876.3	877.5	877.6	877.6	876.5	875.6	874.4	873.3	871.7	872.6	872.7	872.4	872.2	871.5	871.1
578	79	580	81	82	83	84	585	86	87	88	89	590	91	92	93	94	595	96	97	98	99	600	01	02	03	04	605	06	07	08	09	610						

J.H. 1-23-31

GRANT CO. SEC. 7 T24N R10E

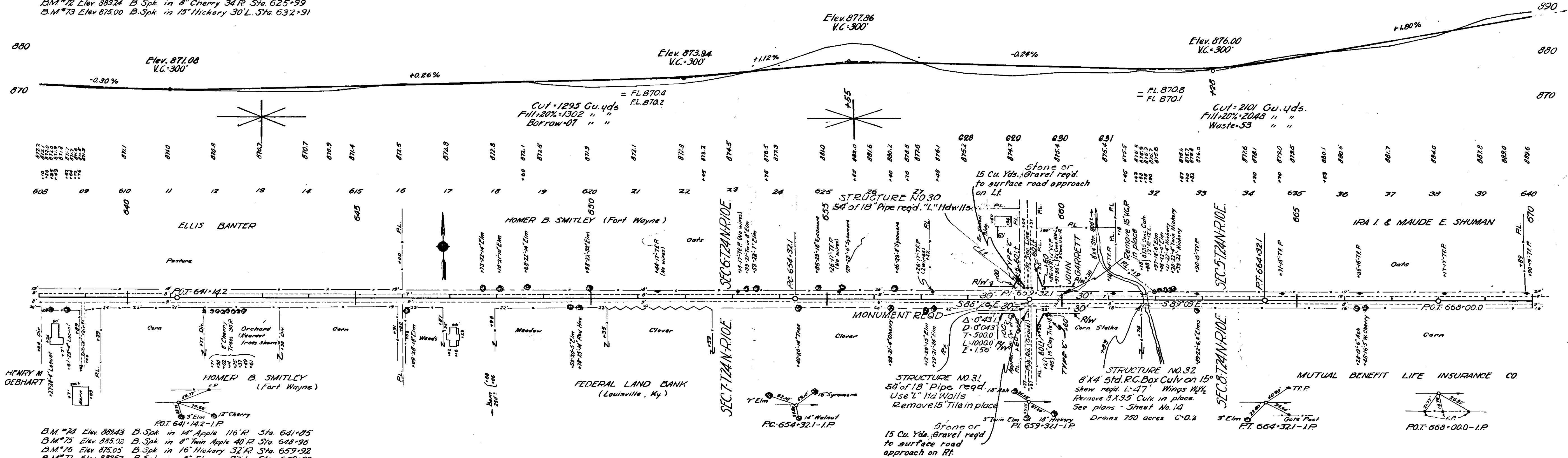
BLACKFORD CO. SEC. 6 T24N R10E

FEDERAL DISTRICT	STATE	P.A.	LOCAL	SHEET	TOTAL
7	IND	239	1830	7	72



ALL R/W ON THIS SHEET 30' ON EACH SIDE OF & EXCEPT AS SHOWN

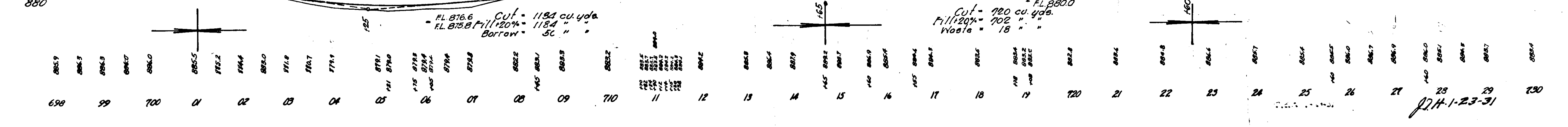
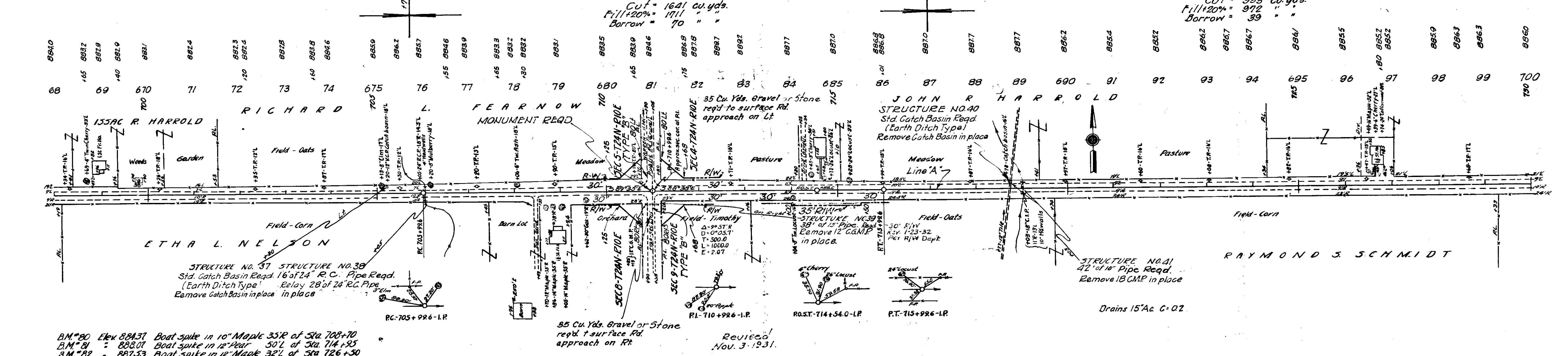
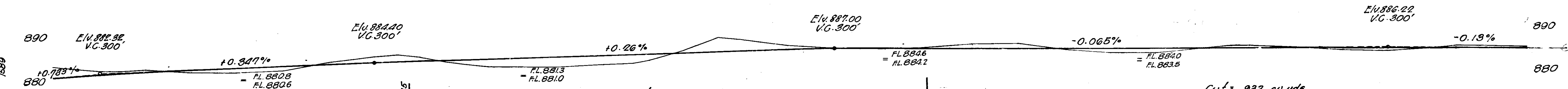
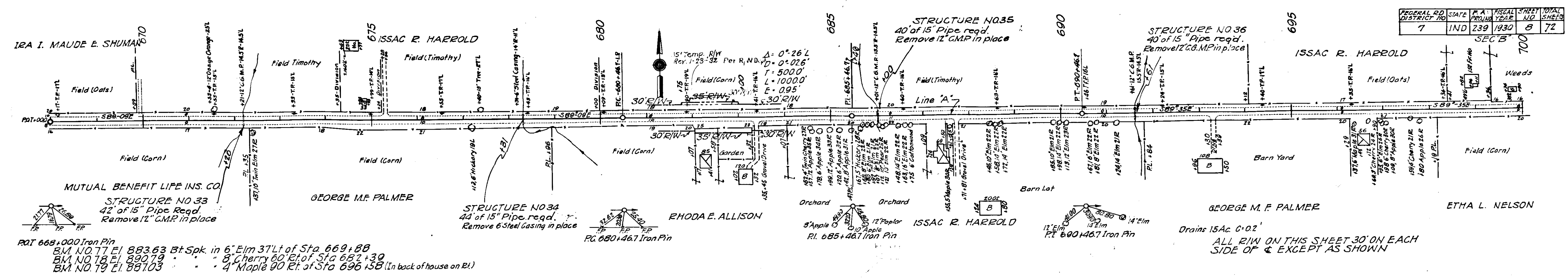
BM #71 Elev 870.73 B. Spk in 5" Elm 84 L Sta 619+05
 BM #72 Elev 883.24 B. Spk in 8" Cherry 34 R Sta 625+99
 BM #73 Elev 875.00 B. Spk in 15" Hickory 30 L Sta 632+91



BM #74 Elev 889.43 B. Spk in 14" Apple 116 R Sta 641+95
 BM #75 Elev 895.03 B. Spk in 8" Tans Apple 40 R Sta 644+98
 BM #76 Elev 875.05 B. Spk in 16" Hickory 32 R Sta 659+92
 BM #77 Elev 883.63 B. Spk in 6" Elm 37 L Sta 669+88

121-123-31

FEDERAL RD DISTRICT NO.	STATE	F.A. PROJECT NO.	FISCAL YEAR	SHEET NO.	TOTAL SHEETS
7	IND	239	1930	8	72



6-30
7-30
NE HOY
NE HOY

6-30
8-30
NE HOY
NE HOY

1690

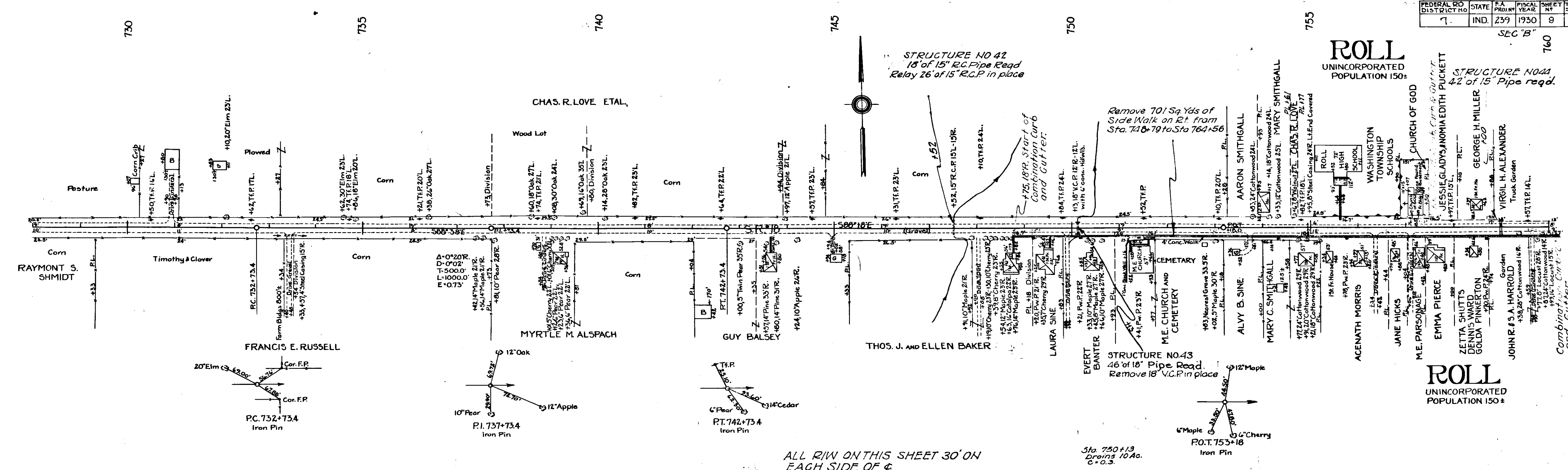
7-1-23-31

FEDERAL RD DISTRICT NO	STATE	PROJECT NO	FISCAL YEAR	SHEET NO	TOTAL SHEETS
1	IND.	239	1950	9	72

ROLL
UNINCORPORATED
POPULATION 150±

STRUCTURE NO. 44
22' of 15" Pipe reqd.

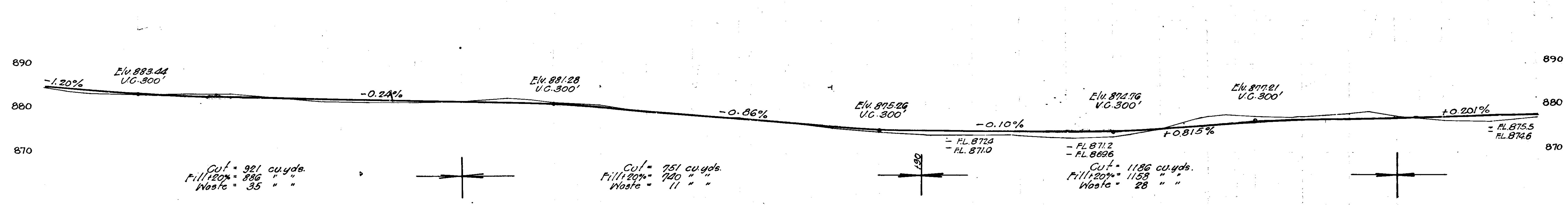
ROLL
UNINCORPORATED
POPULATION 150±



ALL R/W ON THIS SHEET 30' ON EACH SIDE OF C

Revised 10/30/31 Per J.T.H.

B.M. #83, Elev. 881.65, Boat Spike in 15' Oak, 57'L of Sta. 737+49
B.M. #84, Elev. 876.59, Boat Spike in 30' Elm, 48'L of Sta. 744+68
B.M. #85, Elev. 878.16, Boat Spike in 18' Poplar, 42'RC of Sta. 755+75



865.1	864.5	863.7	863.1	863.4	863.5	862.4	861.9	861.6	861.7	861.9	862.5	862.1	861.6	861.1	861.0	871.5	876.5	878.1	878.0	877.7	877.0	875.7	874.7	874.0	874.0	874.0	873.3	873.3	873.5	874.0	875.5	877.5	878.2	878.5	878.1	877.9	878.1	878.3	878.5	877.9	877.9		
28	29	730	31	32	33	34	735	36	37	38	39	740	41	42	43	44	745	46	47	48	49	750	51	52	53	54	755	56	57	58	59	760											

16-22-31

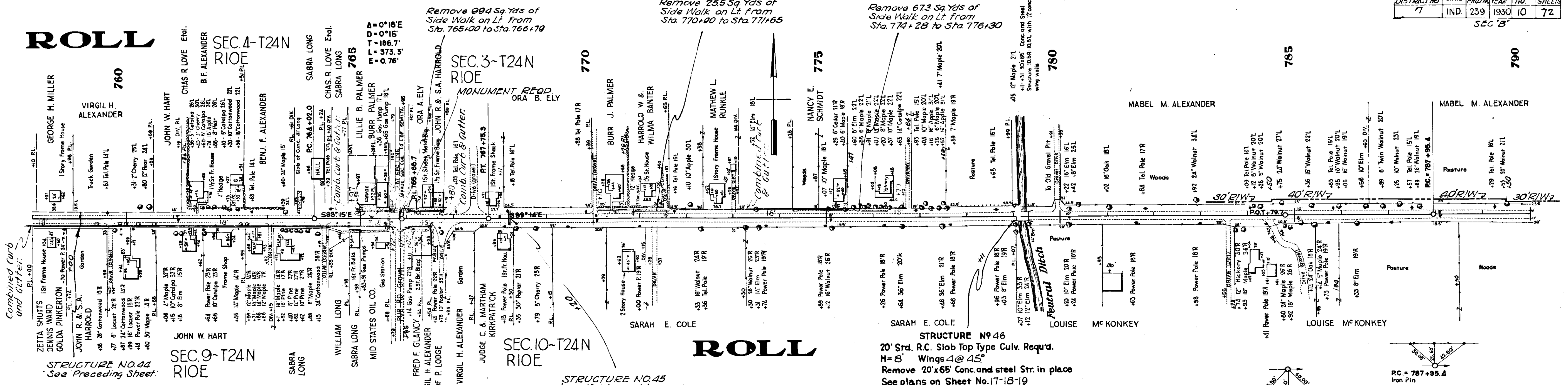
FEDERAL ROAD DISTRICT NO.	STATE	PROJ. YEAR	SHEET NO.	TOTAL SHEETS
7	IND	1939	10	72

SEC 'B'

ROLL

6-16-30
N.E. HOY
8-1-30

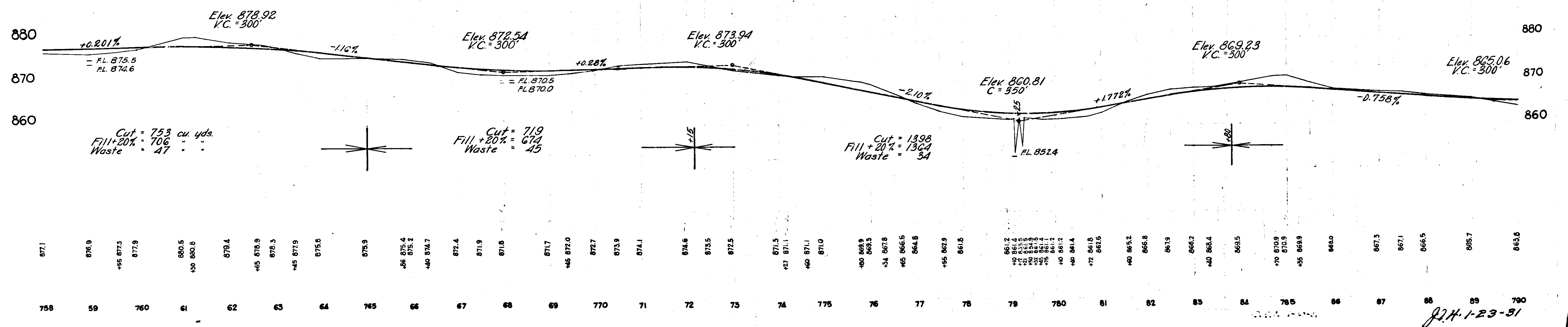
1891-7



B.M. No. 86	Elev. 877.89	Boat Spike in 10" Pine 28'R of Sta. 763+40
B.M. " 87	874.67	" " " 18" Walnut 28'R " 772+33
B.M. " 88	856.66	" " " 14" Oak 34'L " 760+72

Revised 10/30/31 Per. J.T.H.

ALL RIW ON THIS SHEET 30' ON EACH SIDE OF C EXCEPT AS SHOWN



6-16-30
N.E. HOY
8-1-30

1892-L

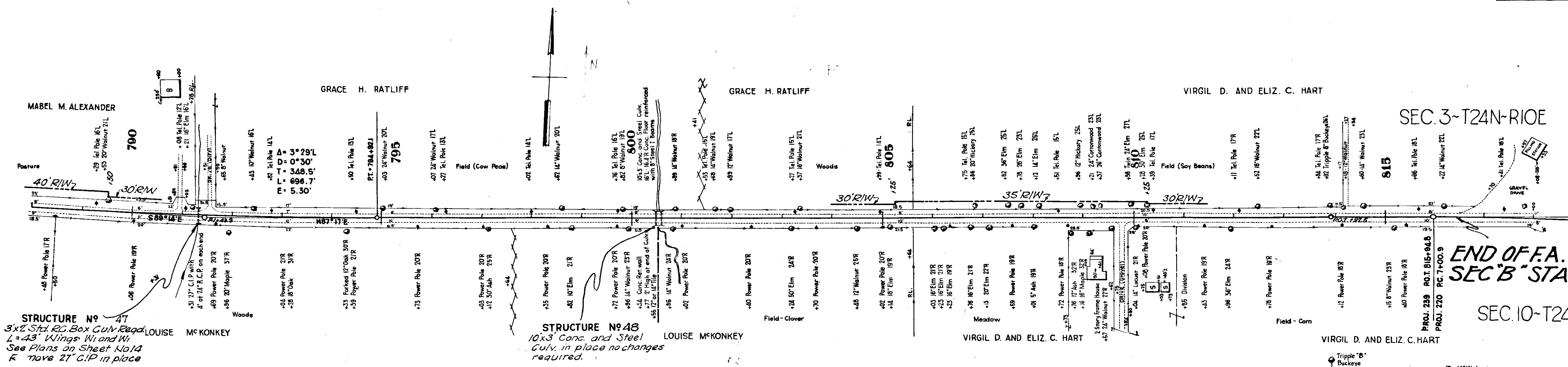
J.T.H. 1-23-31

6-14-30
N.E. 100
8-4-30

6-14-30
N.E. 100
8-4-30

6-14-30
N.E. 100
8-4-30

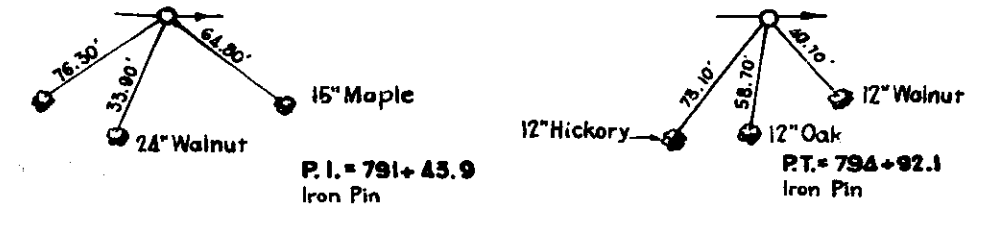
6-14-30
N.E. 100
8-4-30



STRUCTURE No. 47
3x2 Steel Box Cul. w/ Road
L=43' Wings 14' and 14'
See Plans on Sheet No. 14
R. Move 21' C.P. in place

STRUCTURE No. 48
10x3 Conc. and Steel
Culv. in place no changes
required.

Drains 20 Ac. C-0.3.



B.M. No. 89 Elev. = 863.33 Boat Spike in 24\"/>

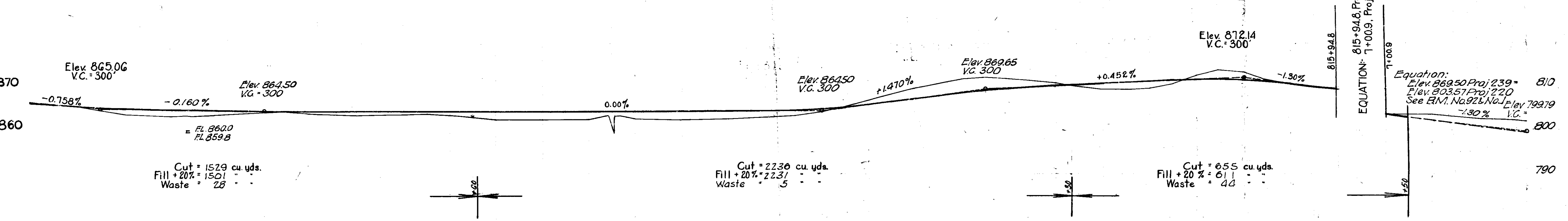
B.M. 90 " " " " 15\"/>

B.M. 91 " " " " 18\"/>

B.M. 92 " " " " 15\"/>

= B.M. 1 Proj. 220 800.00

ALL R/W ON THIS SHEET 30' ON EACH SIDE OF & EXCEPT AS SHOWN



EQUATION: $815+94.8 \text{ Proj. 239} = 810$
 $7+0.09 \text{ Proj. 220, Sec. A} = 803.57 \text{ Proj. 220}$
 See R.M. No. 92 & No. 1 Elev. 799.79
 $-1.30\% \text{ I.C.} = 800$

865	865.7	865.8	865.9	866.0	866.1	866.2	866.3	866.4	866.5	866.6	866.7	866.8	866.9	867.0	867.1	867.2	867.3	867.4	867.5	867.6	867.7	867.8	867.9	868.0	868.1	868.2	868.3	868.4	868.5	868.6	868.7	868.8	868.9	869.0	869.1	869.2	869.3	869.4	869.5	869.6	869.7	869.8	869.9	870.0
785	88	790	91	92	93	94	795	96	97	98	99	800	01	02	03	04	805	06	07	08	09	810	11	12	13	14	15	+94.8	7+0.09	8	9	10	11	12	13	14	15	16	17	18	19	20		

J.H. 123-31