

FEDERAL ROAD DISTRICT NO.	STATE	FED. AID PROJ. NO.	FISCAL YEAR	SHEET NO.	TOTAL SHEETS
7	IND.	239	1931	1	124

SECTION:- A

# INDEX

SHEET NO. 1	TITLE SHEET.
SHEET NO. 2	STANDARD CROSS SECTIONS C-8-G ADOPTED OCT. 1929 Rev. DEC. 1929. Rev. FEB. 14, 1930.
SHEET NO. 3-10	PLAN AND PROFILE.
SHEET NO. 11	BRIDGE AND CULVERT DATA - ESTIMATE OF QUANTITIES FOR CONC. BITUM FILLED BRICK OR BITUM CONC.
SHEET NO. 12-17A	MISCELLANEOUS STANDARDS SHEET A MAY 1931 (SHEET B APRIL 1931) A Rev. 10-24-31, B Rev. 10-17-31   PAVMTS
SHEET NO. 18	STD. REINF. CONC. BOX CULVERT. JAN. 7, 1926.
SHEET NO. 19	STD. REINF. CONC. CULV. - SLAB TOP TYPE WITHOUT FILL (10'-0" TO 18'-0" SPAN)
SHEET NO. 20	STD. REINF. CONC. CULV. - SLAB TOP TYPE UNDER FILL (1'-0" TO 5'-0" (10'-0" TO 20'-0" SPAN) JAN. 7, 1926.
SHEET NO. 21	STD. REINF. CONC. CULV. - SLAB AND GIRDER WITHOUT FILL (20'-0" SPAN) 24'-0" ROADWAY JAN. 31, 1927.
SHEET NO. 22	STD. REINF. CONC. CULV. - SLAB TOP TYPE WITHOUT FILL (10'-0" TO 20'-0" SPAN) 15' SKEW 24'-0" RDWY.
SHEET NO. 23	STD. REINF. CONC. CULV. - SLAB TOP TYPE UNDER FILL (1'-0" TO 5'-0" (10'-0" TO 20'-0" SPAN) 15' SKEW.
SHEET NO. 24	STD. REINF. CONC. CULV. - SLAB TOP TYPE WITHOUT FILL (10'-0" TO 20'-0" SPAN) 30' SKEW.
SHEET NO. 25	STD. REINF. CONC. CULV. - SLAB TOP TYPE UNDER FILL (1'-0" TO 5'-0" (10'-0" TO 20'-0" SPAN) 30' SKEW.
SHEET NO. 26	STD. REINF. CONC. CULV. - SLAB TOP TYPE WITHOUT FILL (10'-0" TO 20'-0" SPAN) 45' SKEW.
SHEET NO. 27	STD. REINF. CONC. CULV. - SLAB TOP TYPE WITHOUT FILL (10'-0" TO 20'-0" SPAN) GRAVITY TYPE.
SHEET NO. 28	STD. REINF. CONC. CULV. - SLAB TOP TYPE WITHOUT FILL (12'-0" TO 20'-0" SPAN) GRAVITY TYPE.
SHEET NO. 29	STD. CROSS SECTIONS C-8-G ADOPTED AUG. 1931. Rev. NOV. 3, 1931
SHEET NO. 30	ESTIMATE OF QUANTITIES FOR ROCK ASPHALT & ASPHALTIC MACADAM PAVEMENTS.
SHEET NO. 31	STD. ARCH CULV.
SHEET NO. 32	STD. PLAN FOR FILLING IN PEAT MARSHES.
SHEET NO. 33	DATA FOR SUPER-ELEVATING AND WIDENING OF CURVES. MARCH 1930.
SHEET NO. 34	STD. DETOUR SIGNS. JAN. 1927.
SHEET NO. 35-37	CROSS SECTIONS.

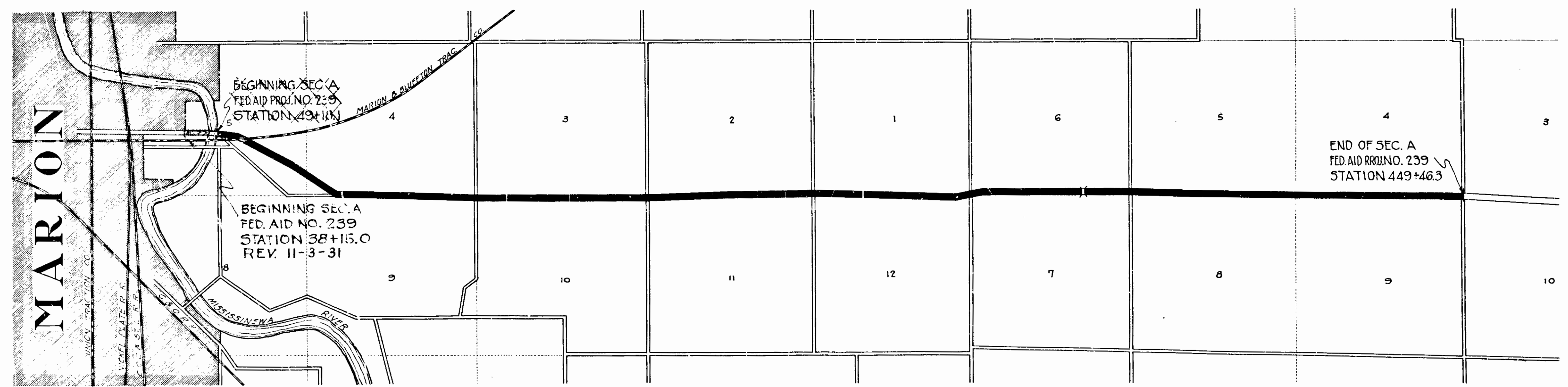
# STATE OF INDIANA

## STATE HIGHWAY COMMISSION

# PLAN AND PROFILE OF PROPOSED STATE HIGHWAY F.A. PROJ. NO. 239 SEC. A MARION-ROLL ROAD.

BEGINNING AT THE EAST END OF THE STRUCTURE OVER THE MISSISSIPPI RIVER IN S.R. 18 AT MARION AND RUNNING EAST TO THE SOUTH EAST CORNER OF SECTION 4 TOWNSHIP 24 NORTH RANGE 03 EAST IN GRANT COUNTY. BEGINNING ON S.R. 13 APPROX. 65' WEST OF THE EAST CORP. LINE OF MARION AND RUNNING EAST TO THE SOUTH EAST CORNER OF SECTION 4 TOWNSHIP 24 NORTH RANGE 03 EAST IN GRANT CO.  
 GROSS LENGTH: 7.581 MI. 7.789  
 NET LENGTH: 4.550 MI. 7.778

SCALES:-  
 PLAN (LONG:- 1"=100' PROFILE (HORIZ:- 1"=100'  
 TRANS:- 1"=100' VERT:- 1"=10'  
 MAX. GRADE=4.92%



APPROVED 2-10-31  
 DIRECTOR INDIANA STATE HIGHWAY COMMISSION  
 APPROVED 2-10-31  
 CHIEF ENGINEER INDIANA STATE HIGHWAY COMMISSION  
 RECOMMENDED FOR APPROVAL  
 DISTRICT ENGINEER BUREAU OF PUBLIC ROADS  
 RECOMMENDED FOR APPROVAL  
 CHIEF ENGINEER BUREAU OF PUBLIC ROADS  
 APPROVED  
 DIRECTOR BUREAU OF PUBLIC ROADS

INDIANA STATE HIGHWAY STANDARD SPECIFICATIONS, DATED 1923, ON FILE WITH THE U.S. BUREAU OF PUBLIC ROADS, TO BE USED WITH THESE PLANS, ALSO SUPPLEMENTAL SPECIFICATIONS, DRAFT OF NOV. 1, 1928, AND NOV. 1, 1930. ALSO INDIANA STATE HIGHWAY STANDARD SPECIFICATION "B" ADOPTED APRIL 1931.

J.H.F. 1-23-31

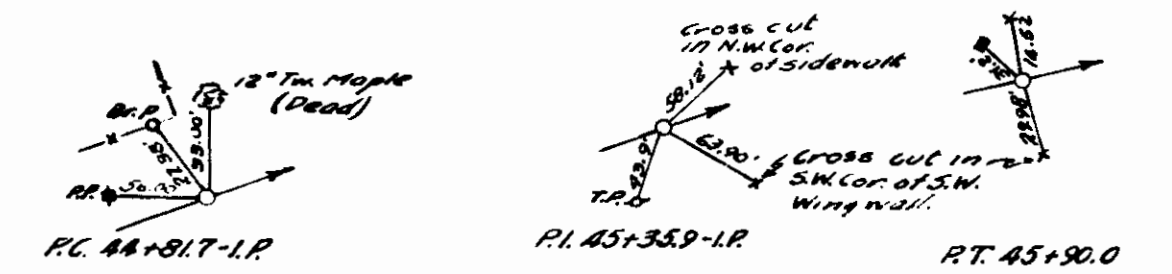
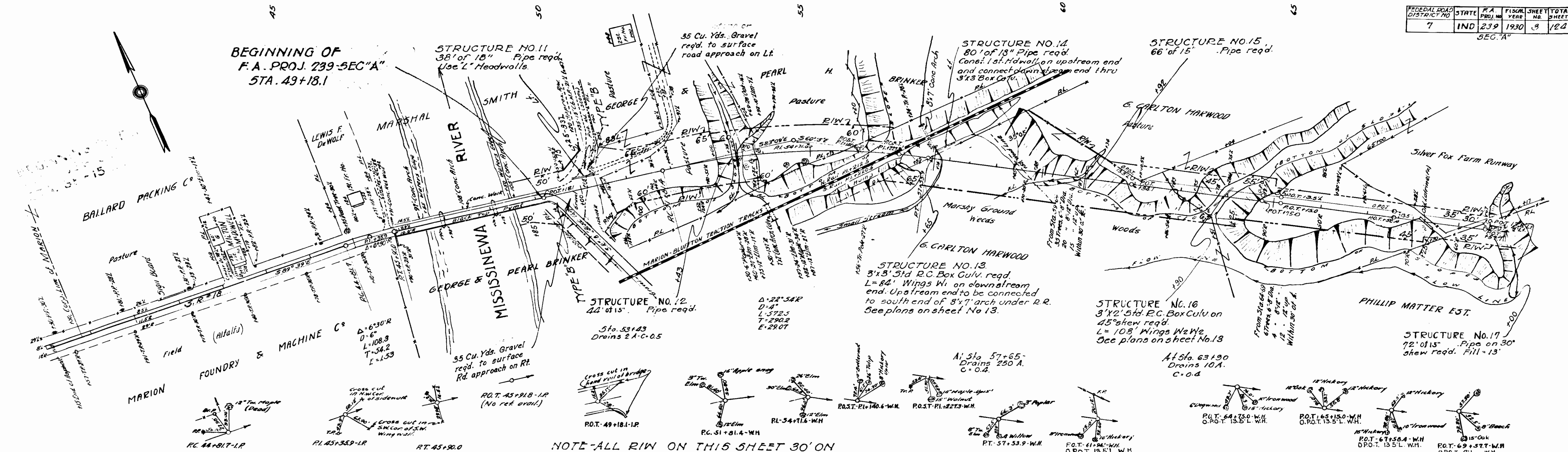


5-14-30  
N.E. HOY

5-14-30  
N.E. HOY

1585T

1586-L



**NOTE-ALL R.I.W. ON THIS SHEET 30' ON EACH SIDE OF & EXCEPT AS SHOWN. STD. SECT. C-8-G-6 ADOPTED AUG. 1931 & STANDARD SECTION C-8-G-6 ADOPTED OCT. 1929-REVISED FEB. 4, 1930 TO BE USED ON THIS PROJECT.**

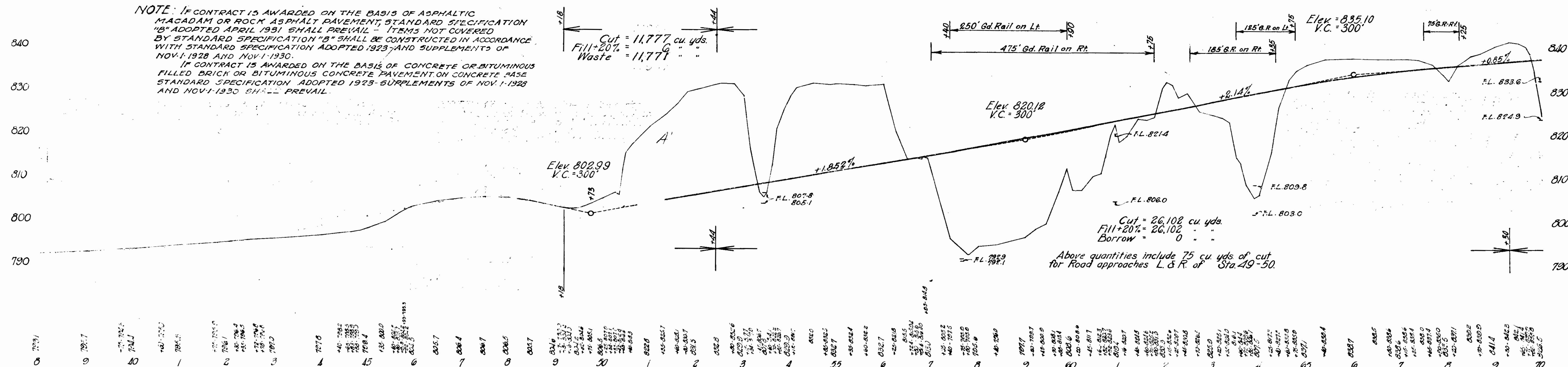
**NOTE-At all road approaches where gravel surface is required, the contractor shall salvage that portion of gravel in place as specified by the engineer.**

**NOTE-Grade line represents top of finished pavement. (Grade to be raised 3/4" for Rock Standards under date as listed in index on title, Asphalt & Asphaltic Macadam Pavements) sheet to be used on this project. All curves of 6° and over to be widened according to standards of 1930. The crown will be taken out of all curves of 6° and over.**

- B.M. No. 6 - E. 804.67 - Cross cut in NW corner of conc. bridge sidewalk, 14' L. of Sta. 45+92.
- B.M. No. 7 - E. 803.09 - Cross cut in N.E. conc. Hdwl. of bridge, 15' L. of Sta. 49+50.
- B.M. No. 8 - E. 836.03 - Boot Spike in 30" Cyc. 126' L. of Sta. 52+72.
- B.M. No. 9 - E. 832.13 - Boot Spike in 30" T. Poplar, 60' L. of Sta. 56+55.
- B.M. No. 10 - E. 820.06 - Boot Spike in 10" Hickory, 130' L. of Sta. 59+06.
- B.M. No. 11 - E. 827.36 - Boot Spike in Root of 18" Maple, 30' L. of Sta. 63+70.
- B.M. No. 12 - E. 833.55 - Boot Spike in Root of 22" Oak, 30' R. of Sta. 66+46.

**NOTE: IF CONTRACT IS AWARDED ON THE BASIS OF ASPHALTIC MACADAM OR ROCK ASPHALT PAVEMENT, STANDARD SPECIFICATION "B" ADOPTED APRIL 1931 SHALL PREVAIL - ITEMS NOT COVERED BY STANDARD SPECIFICATION "B" SHALL BE CONSTRUCTED IN ACCORDANCE WITH STANDARD SPECIFICATION ADOPTED 1923 AND SUPPLEMENTS OF NOV. 1, 1928 AND NOV. 1, 1930.**

**IF CONTRACT IS AWARDED ON THE BASIS OF CONCRETE OR BITUMINOUS FILLED BRICK OR BITUMINOUS CONCRETE PAVEMENT ON CONCRETE BASE STANDARD SPECIFICATION ADOPTED 1923-SUPPLEMENTS OF NOV. 1, 1928 AND NOV. 1, 1930 SHALL PREVAIL.**

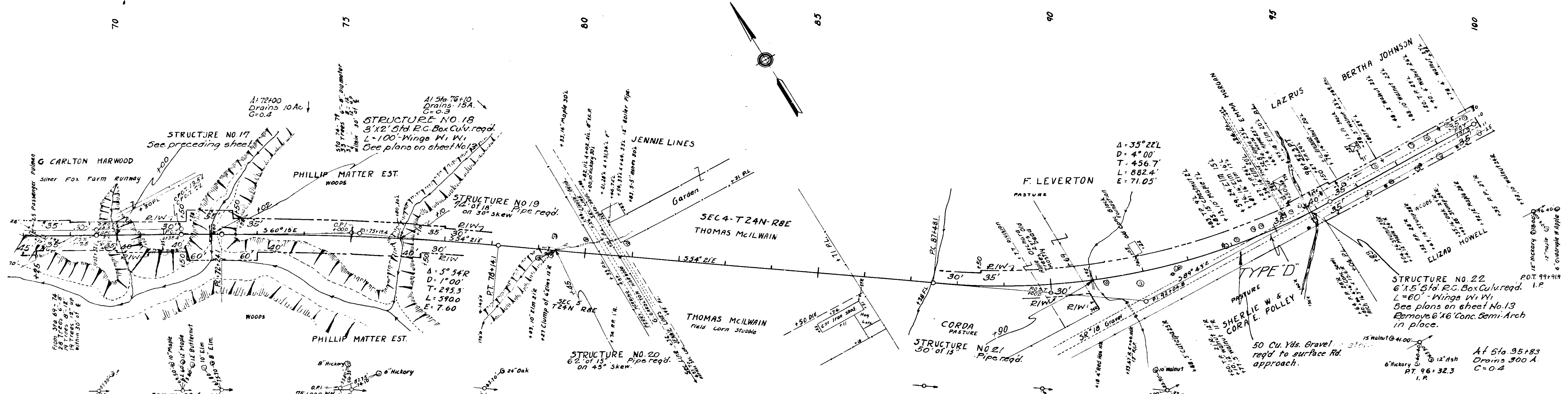


**Cut = 26,102 cu. yds.**  
**Fill = 20% = 5,220 "**  
**Borrow = 0 "**

**Above quantities include 75 cu. yds. of cut for Road approaches L & R. of Sta. 49-50.**

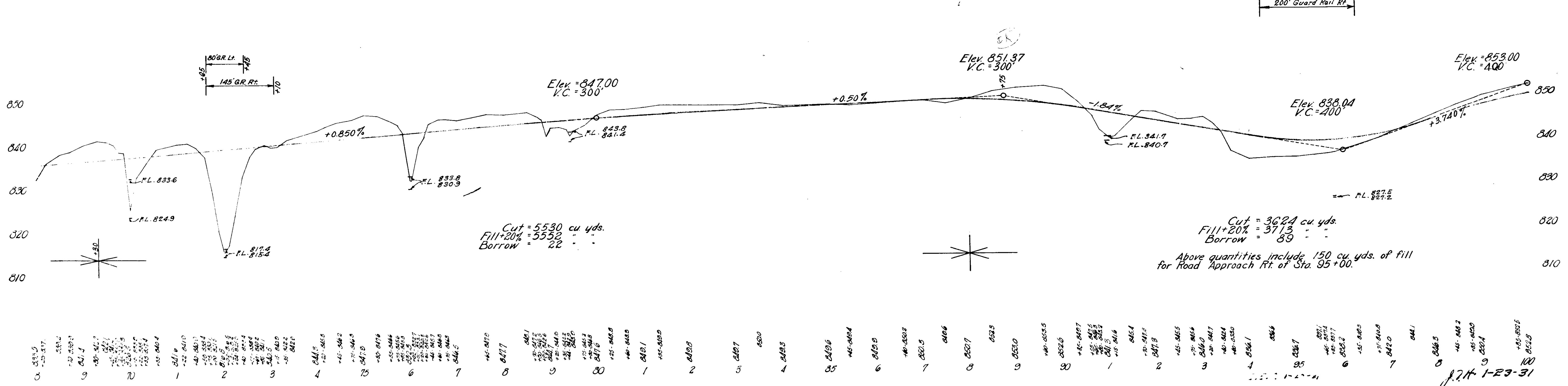
J.T.H. 1-23-31

SECTION



- B.M. No. 12 - El. 835.55 - Boat Spike in Roof of 22" Oak, 50' R of Sta. 88+46.
- B.M. No. 13 - El. 845.16 - Boat Spike in 12" Hickory, 60' L of Sta. 73+14.
- B.M. No. 14 - El. 850.24 - Boat Spike in 18" Oak, 50' L of Sta. 79+42.
- B.M. No. 15 - El. 852.44 - Boat Spike in 8" Elm, 105' L of Sta. 84+88.
- B.M. No. 16 - El. 839.26 - Cross cut in S.W. corner of conc. HWY, 100' R of Sta. 91+60.
- B.M. No. 17 - El. 849.51 - Boat Spike in 15" Maple, 73' R of Sta. 99+80.

NOTE-ALL RIW ON THIS SHEET 30' ON EACH SIDE OF & EXCEPT AS SHOWN



5-14-30  
N.E. HOY  
7-11-30

5-14-30  
N.E. HOY  
7-24-30

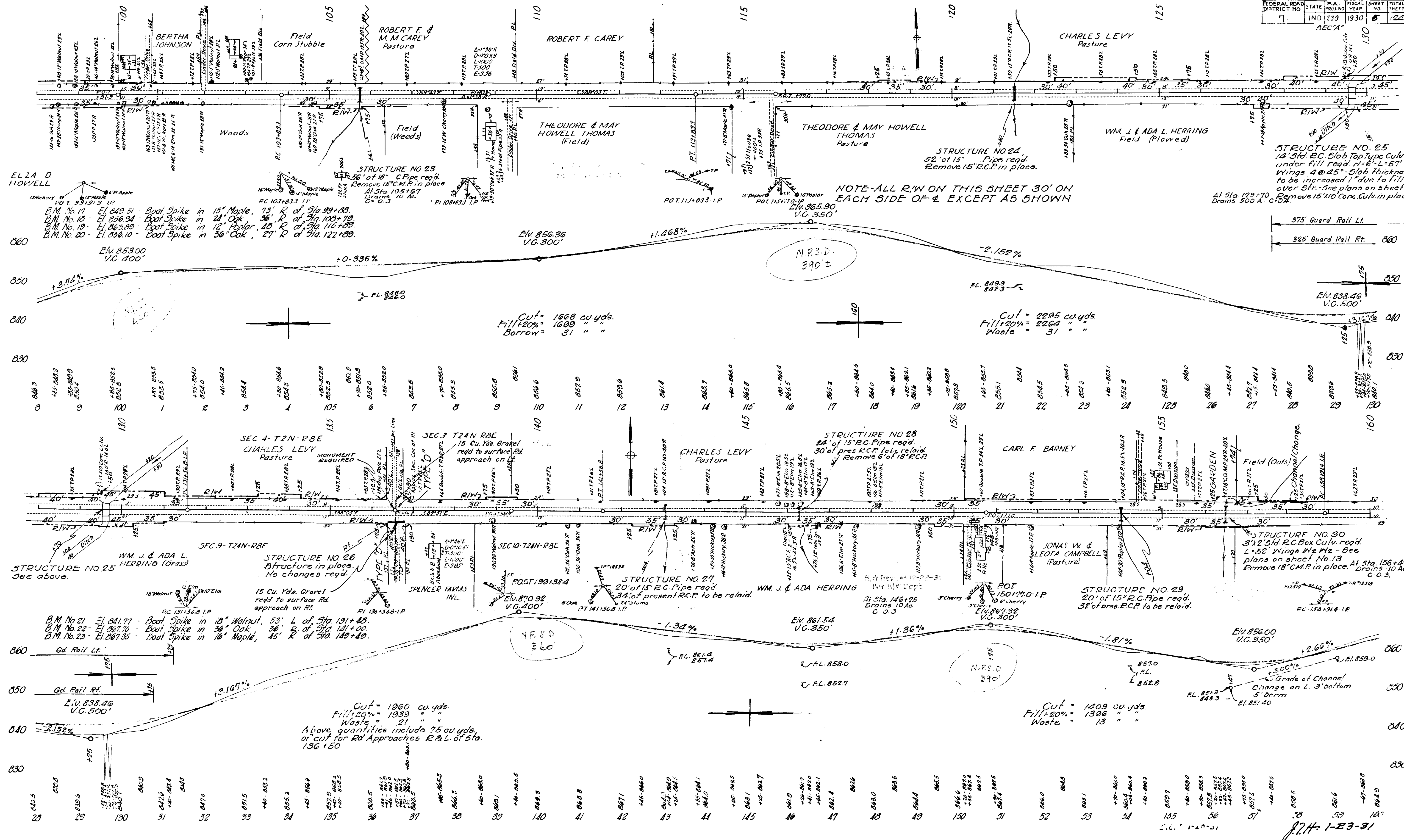
J.H. 1-23-31



51430  
N.E. HOY  
7330

51430  
N.E. HOY  
7330

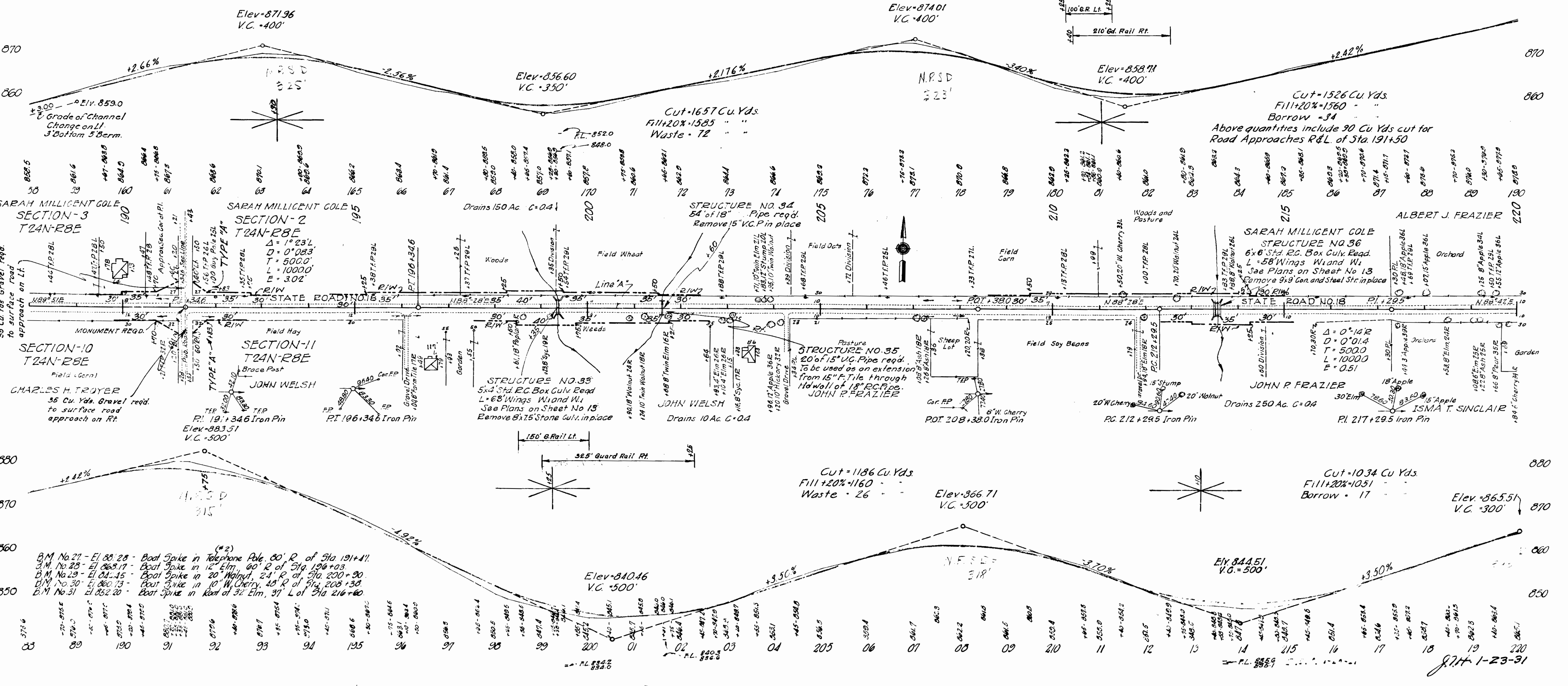
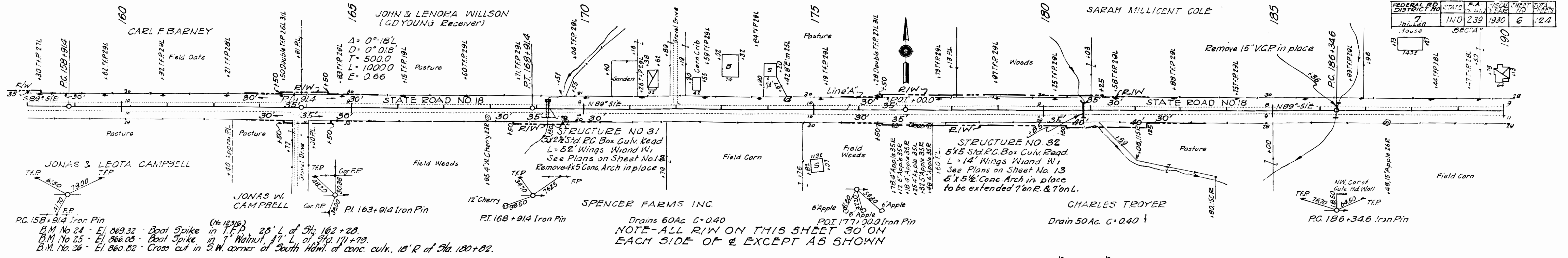
7381



J.P.H. 1-23-31



FEDERAL RD DISTRICT NO	STATE	F.A. No.	SCALE	DATE	BY
7	IND	239	1930	6	124

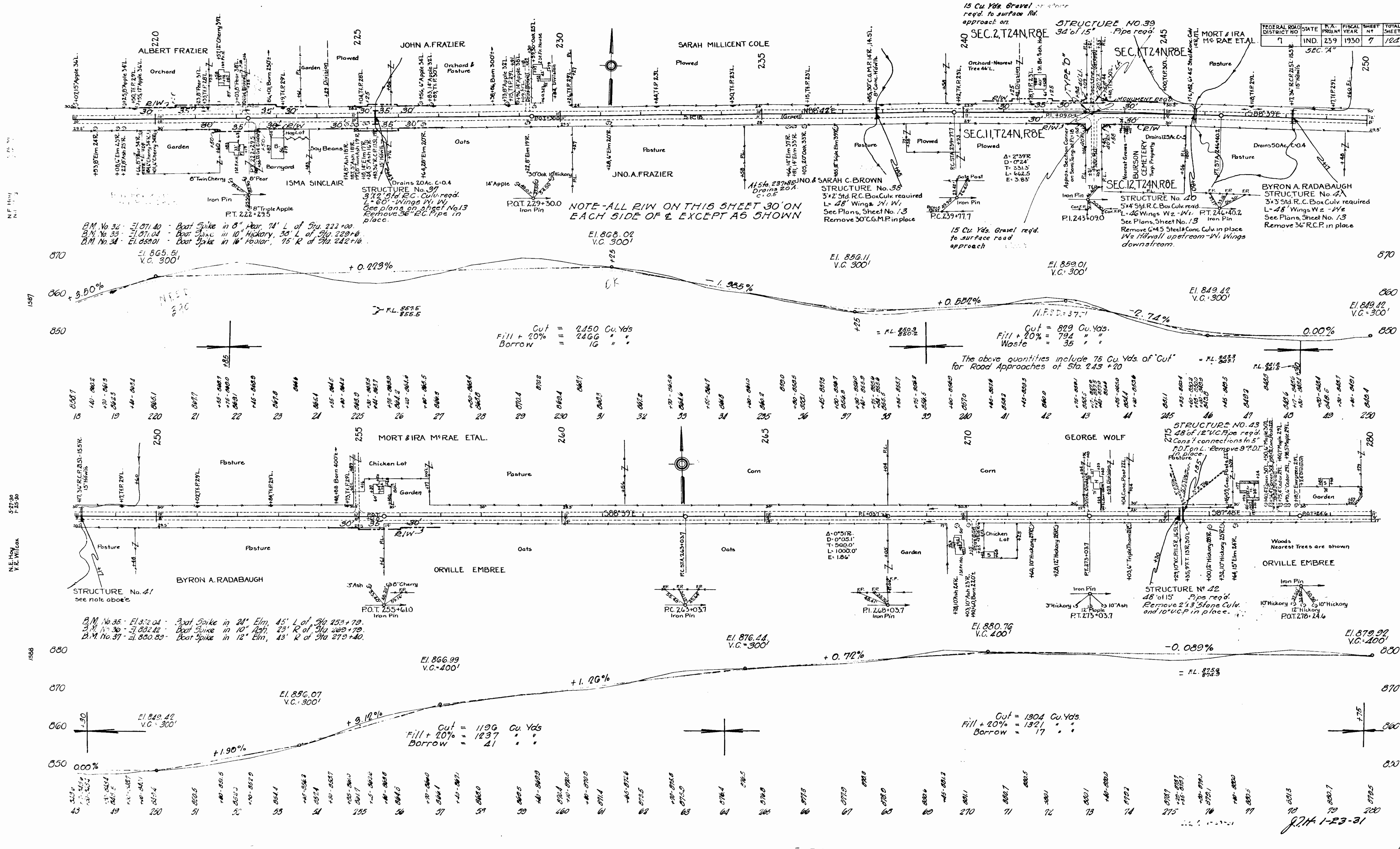


B.M. No 21 - El. 88.28 - Boat Spike in Telephone Pole, 80' R. of Sta. 191+41.  
 B.M. No 25 - El. 86.17 - Boat Spike in 12' Elm, 60' R. of Sta. 196+03.  
 B.M. No 29 - El. 84.45 - Boat Spike in 20' Walnut, 24' R. of Sta. 200+30.  
 B.M. No 30 - El. 86.73 - Boat Spike in 10' W. Cherry, 45' R. of Sta. 208+38.  
 B.M. No 31 - El. 85.20 - Boat Spike in Road of 32' Elm, 37' Lot Sta. 216+60.

Sheet 1-23-31



FEDERAL ROAD DISTRICT NO.	STATE	P.A. PROJECT	FISCAL YEAR	SHEET NO.	TOTAL SHEETS
7	IND.	259	1930	7	122



15 Cu. Yds. Gravel reqd. to surface Rd. approach on

STRUCTURE NO. 39  
34' of 15" Pipe reqd.

MORT & IRA M<sup>r</sup> RAE ETAL

NOTE - ALL R/W ON THIS SHEET 30' ON EACH SIDE OF & EXCEPT AS SHOWN

15 Cu. Yds. Gravel reqd. to surface road approach

BYRON A. RADABAUGH  
STRUCTURE No. 41  
3x3 Std. R.C. Box Culv. required  
L=48' Wings Wz - 14'  
See Plans, Sheet No. 13  
Remove 3/4" R.C.P. in place

Cut = 2450 Cu. Yds.  
Fill + 20% = 2466 " "  
Borrow = 16 " "

Cut = 829 Cu. Yds.  
Fill + 10% = 794 " "  
Waste = 35 " "

The above quantities include 75 Cu. Yds. of Cut for Road Approaches of Sta. 243 +20

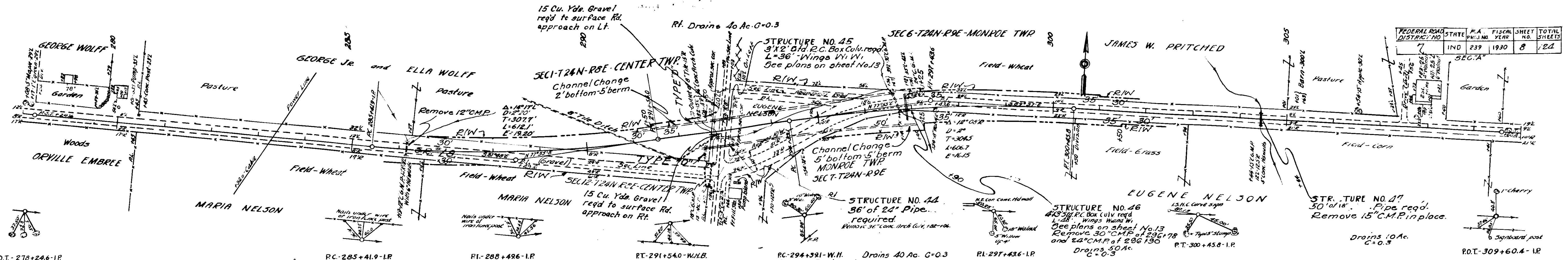
B.M. No. 35 - El. 872.04 - Boat Spike in 21" Elm, 45' L of Sta 253 +70.  
B.M. No. 36 - El. 882.42 - Boat Spike in 10" Ash, 23' R of Sta 269 +70.  
B.M. No. 37 - El. 880.83 - Boat Spike in 12" Elm, 13' R of Sta 279 +40.

Cut = 1196 Cu. Yds.  
Fill + 20% = 1237 " "  
Borrow = 41 " "

Cut = 1304 Cu. Yds.  
Fill + 20% = 1321 " "  
Borrow = 17 " "

9.21.1-23-31

FEDERAL ROAD DISTRICT NO.	STATE	F.A. NO.	FISCAL YEAR	SHEET NO.	TOTAL SHEETS
7	IND	239	1930	8	121



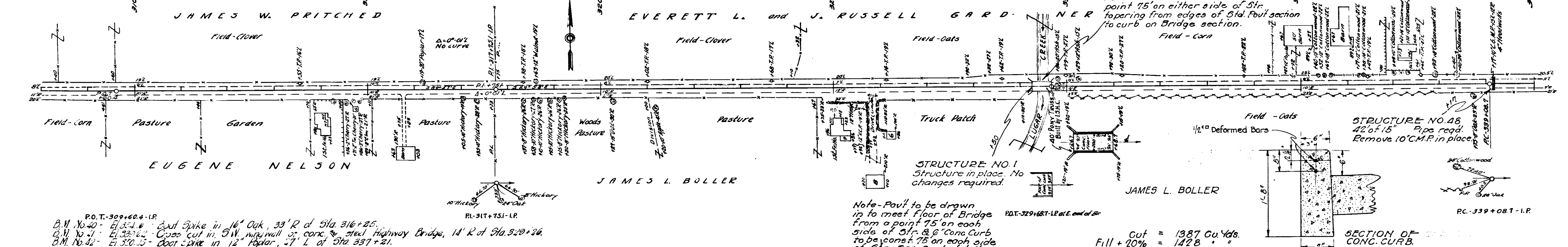
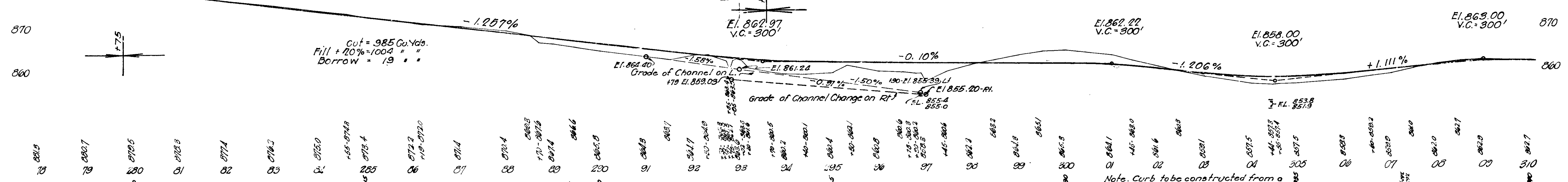
NOTE-ALL R/W ON THIS SHEET 30' ON EACH SIDE OF & EXCEPT AS SHOWN

Cut = 2833 Cu. Yds.  
 Fill + 20% = 2927 " "  
 Borrow = 94 " "

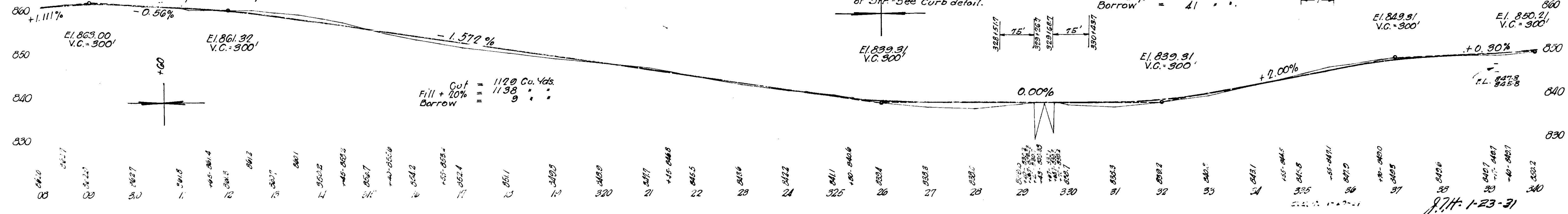
P.O.T.-278+24.6-I.P.  
 B.M. No. 37 - El. 880.89  
 B.M. No. 38 - El. 865.71  
 B.M. No. 39 - El. 879.92  
 V.C. = 260'

PC-285+41.9-I.P.  
 B.M. No. 40 - El. 875.16  
 B.M. No. 41 - El. 870.25  
 B.M. No. 42 - El. 870.25  
 V.C. = 260'

RI-288+49.6-I.P.



Cut = 1387 Cu. Yds.  
 Fill + 20% = 1428 " "  
 Borrow = 41 " "

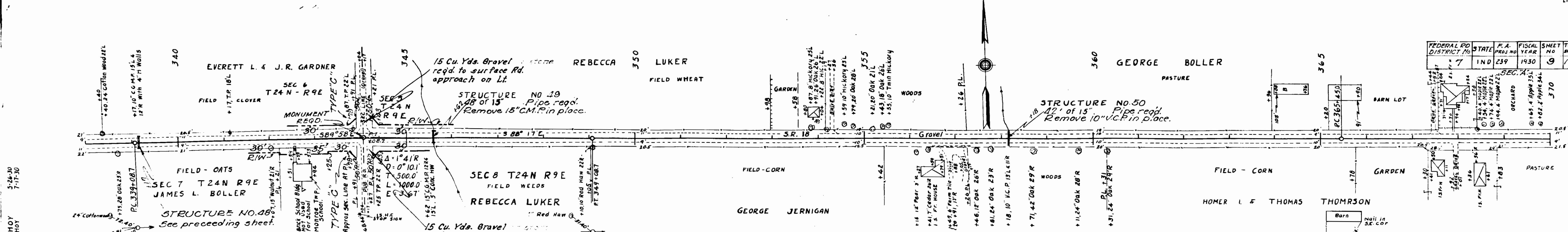


Cut = 1120 Cu. Yds.  
 Fill + 20% = 1138 " "  
 Borrow = 9 " "

9.7.H. 1-23-31



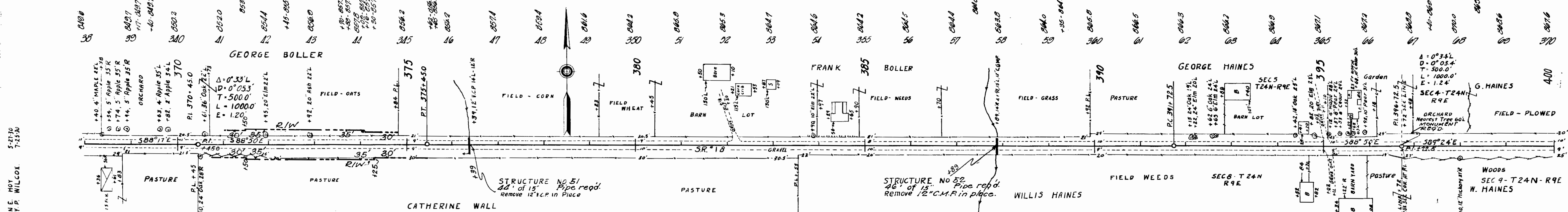
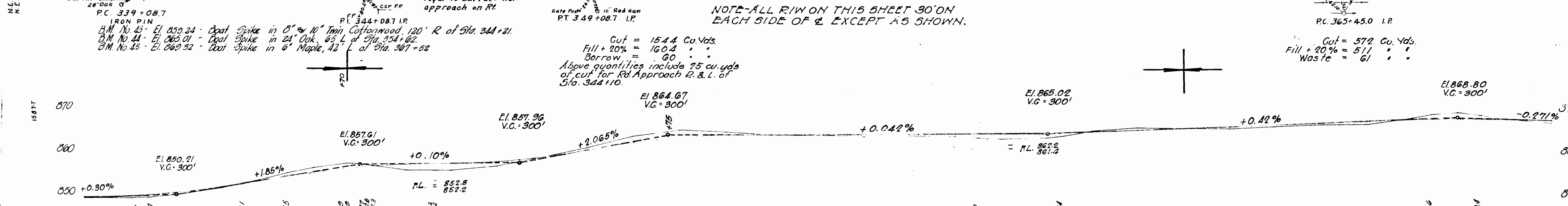
FEDERAL RD DISTRICT NO	STATE	F.A. PROJ NO	FISCAL YEAR	SHEET NO	TOTAL SHEETS
7	IND	239	1930	9	122



NOTE-ALL R/W ON THIS SHEET 30' ON EACH SIDE OF & EXCEPT AS SHOWN.

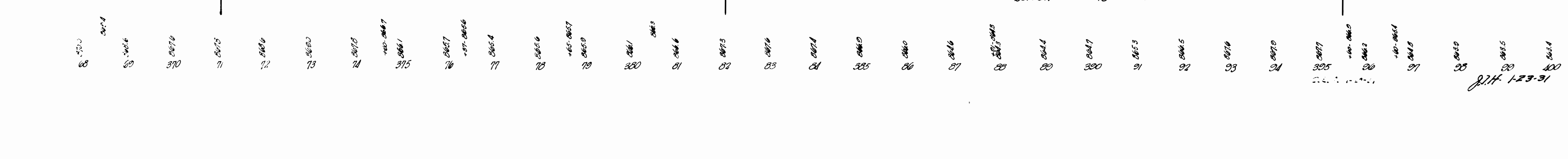
Cut = 1544 Cu. Yds.  
 Fill + 20% = 1604 " "  
 Borrow = 60 " "  
 Above quantities include 75 cu. yds. of cut for Rd. Approach R. & L. of Sta. 344+10.

Cut = 572 Cu. Yds.  
 Fill + 20% = 511 " "  
 Waste = 61 " "



Cut = 1051 Cu. Yds.  
 Fill + 20% = 1033 " "  
 Waste = 18 " "

Cut = 1492 Cu. Yds.  
 Fill + 20% = 1510 " "  
 Borrow = 18 " "

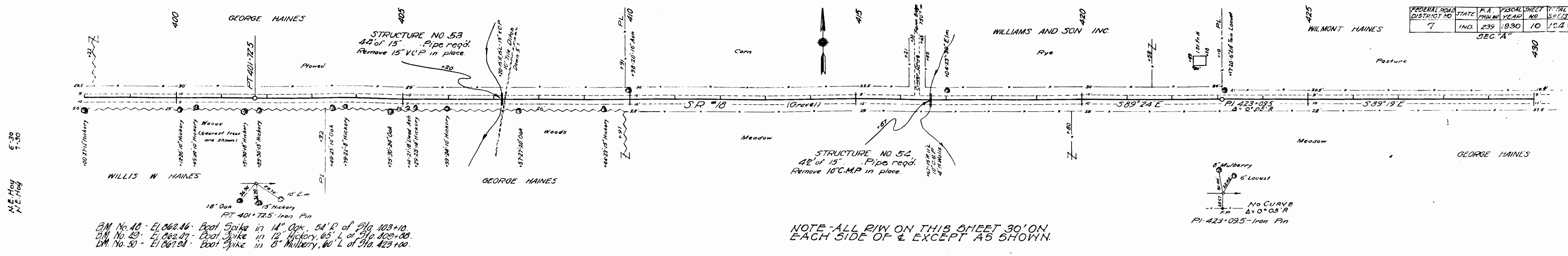


274-1-23-31



FEDERAL ROAD DISTRICT NO.	STATE	F.A. PROJ. NO.	FISCAL YEAR	SHEET NO.	TOTAL SHEETS
7	IND.	239	1930	10	124

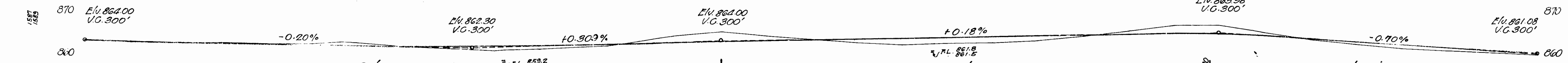
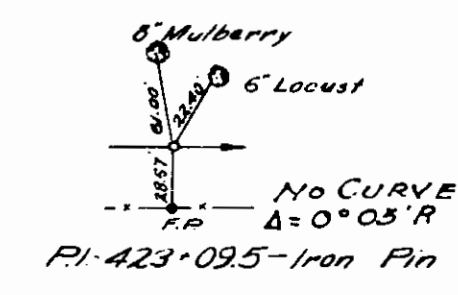
SEC. "A"



5-30  
N.E. Hoy  
N.E. Hoy

BM No. 40 - El. 862.46 - Boot Spike in 14" Oak, 54' R. of Sta. 103+10.  
 BM No. 49 - El. 862.47 - Boot Spike in 12" Hickory, 65' L. of Sta. 109+30.  
 BM No. 50 - El. 867.23 - Boot Spike in 5" Mulberry, 60' L. of Sta. 423+00.

NOTE - ALL R/W ON THIS SHEET 30' ON EACH SIDE OF & EXCEPT AS SHOWN.



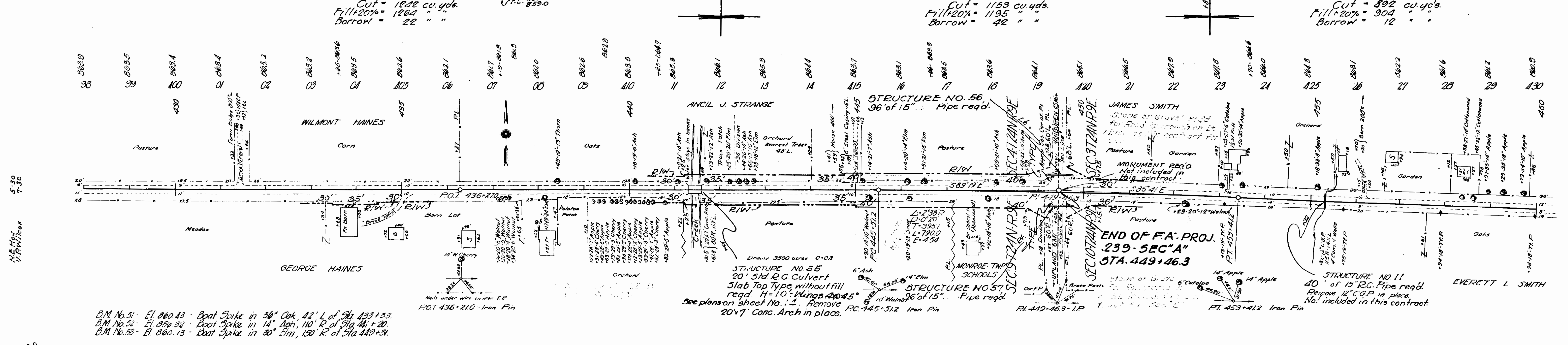
Cut = 1232 cu. yds.  
 Fill +20% = 1264 " "  
 Borrow = 22 " "

Cut = 1153 cu. yds.  
 Fill +20% = 1195 " "  
 Borrow = 42 " "

Cut = 892 cu. yds.  
 Fill +20% = 904 " "  
 Borrow = 12 " "

5-30  
N.E. Hoy  
N.E. Hoy

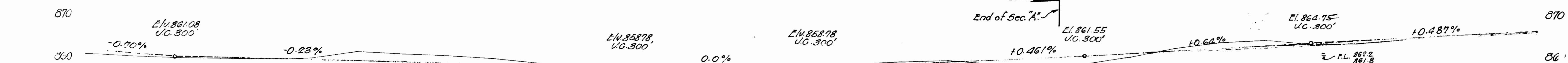
5-30  
N.E. Hoy  
N.E. Hoy



BM No. 51 - El. 860.43 - Boot Spike in 36" Oak, 42' L. of Sta. 433+33.  
 BM No. 52 - El. 859.32 - Boot Spike in 14" Ash, 110' R. of Sta. 441+20.  
 BM No. 53 - El. 860.13 - Boot Spike in 30" Elm, 150' R. of Sta. 449+31.

See plans on sheet No. 12. Remove PC 445+512 Iron Pin  
 20' x 7' Conc. Arch in place.

Structure No. 11  
 40' of 15" R.C. Pipe reqd.  
 Remove 12" C.G.P. in place.  
 No. included in this contract.



Cut = 1991 cu. yds.  
 Fill +20% = 2073 " "  
 Borrow = 82 " "

Grade of ditch on R & L 2' bottom 5' berm

274-1-23-31