

**INDEX**

SHEET NO. 1	TITLE SHEET
SHEET NO. 2	STANDARD CROSS SECTIONS
SHEET NO. 3	TYPICAL CROSS SECTIONS
SHEET NO. 4-18	STD. PAVEMENT JOINTS (REV. OCTOBER 6, 1953) SPECIAL PAVEMENT JOINTS
SHEET NO. 19-17	PLAN AND PROFILE
SHEET NO. 18-20	MISCELLANEOUS STANDARDS SHEET A (REV. MARCH 11, 1953) B (REV. OCTOBER 5, 1954) C (REV. MARCH 25, 1947)
SHEET NO. 21-23	MISCELLANEOUS STANDARDS SHEET D (REV. FEBRUARY 12, 1950) E (REV. FEBRUARY 9, 1950) F (REV. JANUARY 6, 1954)
SHEET NO. 24-26	MISCELLANEOUS STANDARDS SHEET G (REV. AUGUST 10, 1954) H (REV. JUNE 10, 1955) I (REV. FEBRUARY 1949)
SHEET NO. 27	STD. STRUCTURE CONNECTIONS FOR EXTENSIONS
SHEET NO. 28	STD. REINF. CONC. BOX CULVERT
SHEET NO. 29	STD. REINF. CONC. CULV.—SLAB TOP TYPE WITHOUT FILL (10'-0" TO 20'-0" SPAN)
SHEET NO. 30	STD. REINF. CONC. CULV.—SLAB TOP TYPE UNDER FILL 1'-0" TO 5'-0" (10'-0" TO 20'-0" SPAN)
SHEET NO. 31	STD. REINF. CONC. CULV.—SLAB TOP TYPE WITHOUT FILL (10'-0" TO 20'-0" SPAN) 16° SKEW
SHEET NO. 32	STD. REINF. CONC. CULV.—SLAB TOP TYPE UNDER FILL 1'-0" TO 5'-0" (10'-0" TO 20'-0" SPAN) 16° SKEW
SHEET NO. 33	STD. REINF. CONC. CULV.—SLAB TOP TYPE WITHOUT FILL (10'-0" TO 20'-0" SPAN) 30° SKEW
SHEET NO. 34	STD. REINF. CONC. CULV.—SLAB TOP TYPE UNDER FILL 1'-0" TO 5'-0" (10'-0" TO 20'-0" SPAN) 30° SKEW
SHEET NO. 35	STD. REINF. CONC. CULV.—SLAB TOP TYPE WITHOUT FILL (10'-0" TO 20'-0" SPAN) 45° SKEW
SHEET NO. 36	STD. REINF. CONC. CULV.—SLAB TOP TYPE UNDER FILL 1'-0" TO 5'-0" (10'-0" TO 20'-0" SPAN) 45° SKEW
SHEET NO. 37	STEEL PIPE SAND PILE REV. 7-27-49
SHEET NO. 38	STD. CONC. SLAB RAILROAD GRADE CROSSING
SHEET NO. 39	ALTERNATE STD. CONC. SLAB RAILROAD GRADE CROSSING
SHEET NO. 40	
SHEET NO. 41	
SHEET NO. 42	
SHEET NO. 43	
SHEET NO. 44	
SHEET NO. 45	
SHEET NO. 46	
SHEET NO. 47	
SHEET NO. 48	
SHEET NO. 49	
SHEET NO. 50	
SHEET NO. 51	
SHEET NO. 52	
SHEET NO. 53	
SHEET NO. 54	
SHEET NO. 55	
SHEET NO. 56	
SHEET NO. 57	
SHEET NO. 58	
SHEET NO. 59	
SHEET NO. 60	
SHEET NO. 61	
SHEET NO. 62	
SHEET NO. 63	
SHEET NO. 64	
SHEET NO. 65	
SHEET NO. 66	
SHEET NO. 67	
SHEET NO. 68	
SHEET NO. 69	
SHEET NO. 70	
SHEET NO. 71	
SHEET NO. 72	
SHEET NO. 73	
SHEET NO. 74	
SHEET NO. 75	
SHEET NO. 76	
SHEET NO. 77	
SHEET NO. 78	
SHEET NO. 79	
SHEET NO. 80	
SHEET NO. 81	
SHEET NO. 82	
SHEET NO. 83	
SHEET NO. 84	
SHEET NO. 85	
SHEET NO. 86	
SHEET NO. 87	
SHEET NO. 88	
SHEET NO. 89	
SHEET NO. 90	
SHEET NO. 91	
SHEET NO. 92	
SHEET NO. 93	
SHEET NO. 94	
SHEET NO. 95	
SHEET NO. 96	
SHEET NO. 97	
SHEET NO. 98	
SHEET NO. 99	
SHEET NO. 100	

SHEET NO. 13A STA. 10+11 to STA. 11+45 COMM. DRIVES REVISED  
SHEET NO. 39A CROSS SECTIONS

**STATE OF INDIANA  
STATE HIGHWAY DEPARTMENT**

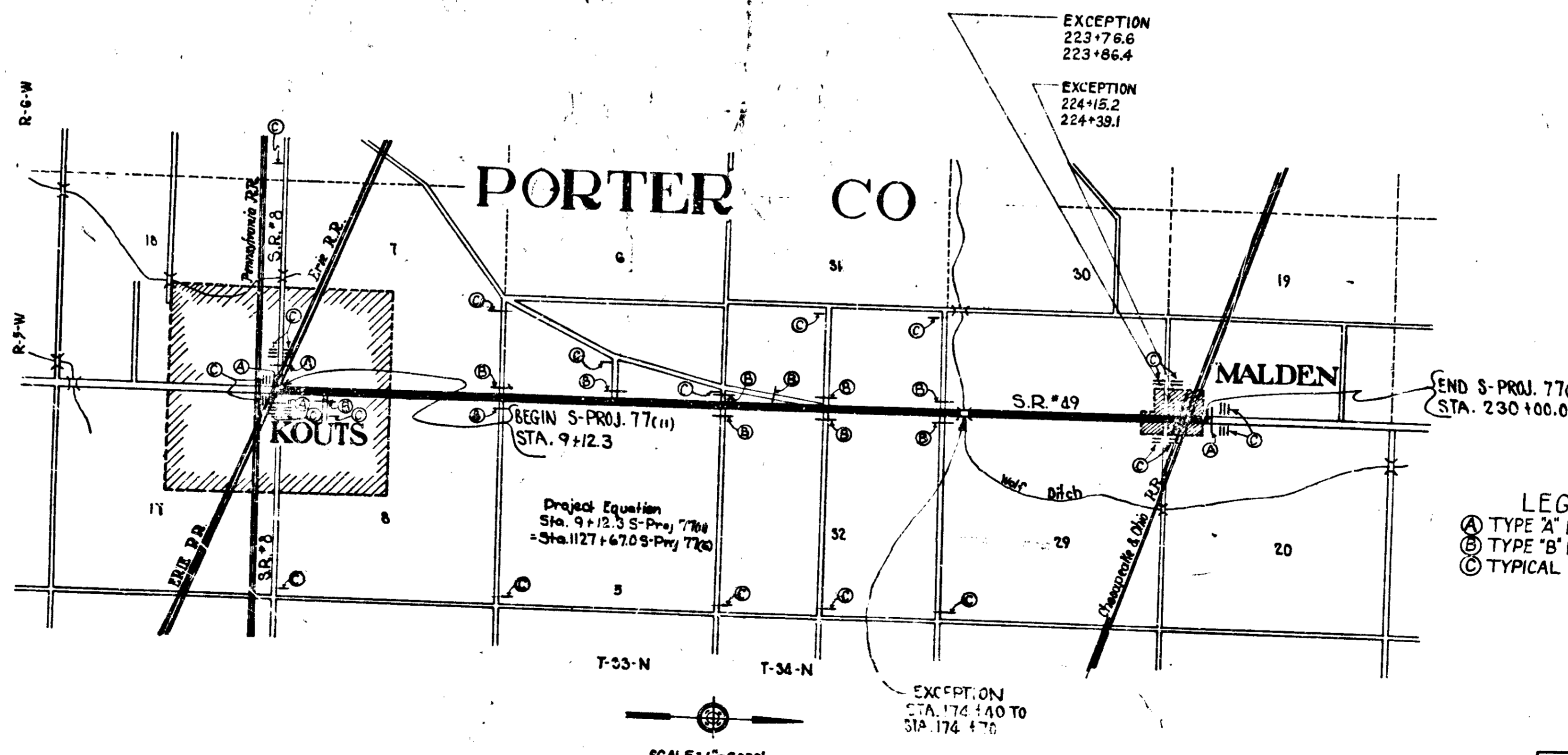
**PLAN AND PROFILE OF PROPOSED  
STATE HIGHWAY  
S PROJECT NO. 77 R.C.**

FEDERAL ROAD DISTRICT NO.	STATE	PROJ. NO.	FISCAL YEAR	SHEET NO.	TOTAL SHEETS
4	IND.	1106	1955	1	61

8-4-55 - REVISED  
12-21-55 - REVISED PER ROAD DESIGN

BEGINNING AT A POINT APPROXIMATELY 81.7 FT. SOUTH OF THE SOUTH-WEST CORNER OF SECTION 8, T.33 N., R.5-W AND EXTENDING IN A NORTHERLY DIRECTION, APPROXIMATELY 22,087.8 FT. TO A POINT APPROXIMATELY 85.4 FT. NORTH OF THE SOUTH-WEST CORNER OF SECTION 20, T.34 N., R.5-W. ALL IN PORTER COUNTY

GROSS LENGTH: 4.183 MI.  
NET LENGTH: 4.171 MI.  
SCALES: 4.171  
PLAN LONG: 1"=100' TRANS: 1"=100' PROFILE HORIZ: 1"=100' VERT: 1"=10'  
MAX. GRADE, 1.035%



REVISIONS		
DATE	SHEET NO.	REVISED
8-4-55	5	Per R/W Dept.
8-4-55	12	Per R/W Dept.
8-4-55	13	Per R/W Dept.
8-4-55	13A	Per R/W Dept.
8-4-55	14	Per R/W Dept.
8-4-55	15	Per R/W Dept.
8-4-55	17	Per R/W Dept.
8-4-55	1	REVISED
11-21-55	13-A	Per R/W Dept.
12-21-55	1 & 10	Per Road Design

DESIGN DATA	
Average Daily Traffic (1955)	1000 VPD
Average Daily Traffic (1975)	1500 VPD
Design Hourly Volume	180 VPH
Directional Distribution	50% North
Trucks	22%
Design Speed	70 MPH

- LEGEND**
- (A) TYPE 'A' BARRICADES
  - (B) TYPE 'B' BARRICADES
  - (C) TYPICAL SIGN STANDARDS

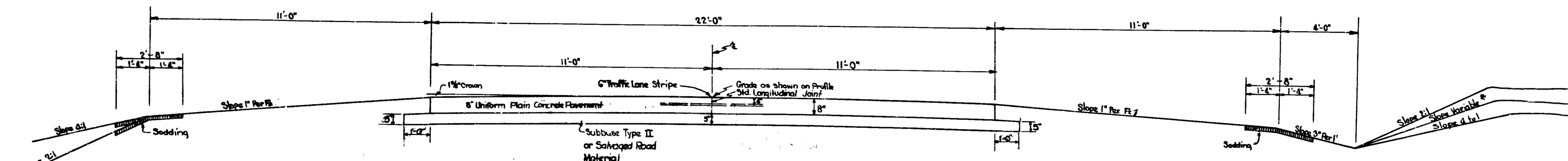
APPROVED AND ADOPTED 2-23-55  
BY STATE HIGHWAY DEPARTMENT OF INDIANA  
*Neil R. Erdman*  
CHAIRMAN, STATE HIGHWAY DEPARTMENT OF INDIANA  
APPROVED 2-22-55  
*Carl E. Vogelbein*  
CHIEF ENGINEER, STATE HIGHWAY DEPARTMENT OF INDIANA

STATE HIGHWAY COMMISSION OF INDIANA.  
STANDARD SPECIFICATIONS DATED 1952  
TO BE USED WITH THESE PLANS

RECOMMENDED FOR APPROVAL 2-18-55  
*W.H. Johnson*  
MEMBER OF ROAD DESIGN, STATE HIGHWAY DEPARTMENT OF INDIANA

DEPARTMENT OF COMMERCE  
BUREAU OF PUBLIC ROADS  
APPROVED: \_\_\_\_\_  
DISTRICT ENGINEER  
DATE \_\_\_\_\_

FEDERAL ROAD DISTRICT NO.	STATE	PROJ. NO.	FISCAL YEAR	SHEET NO.	TOTAL SHEETS
4	IND.	1700	1965	2	81

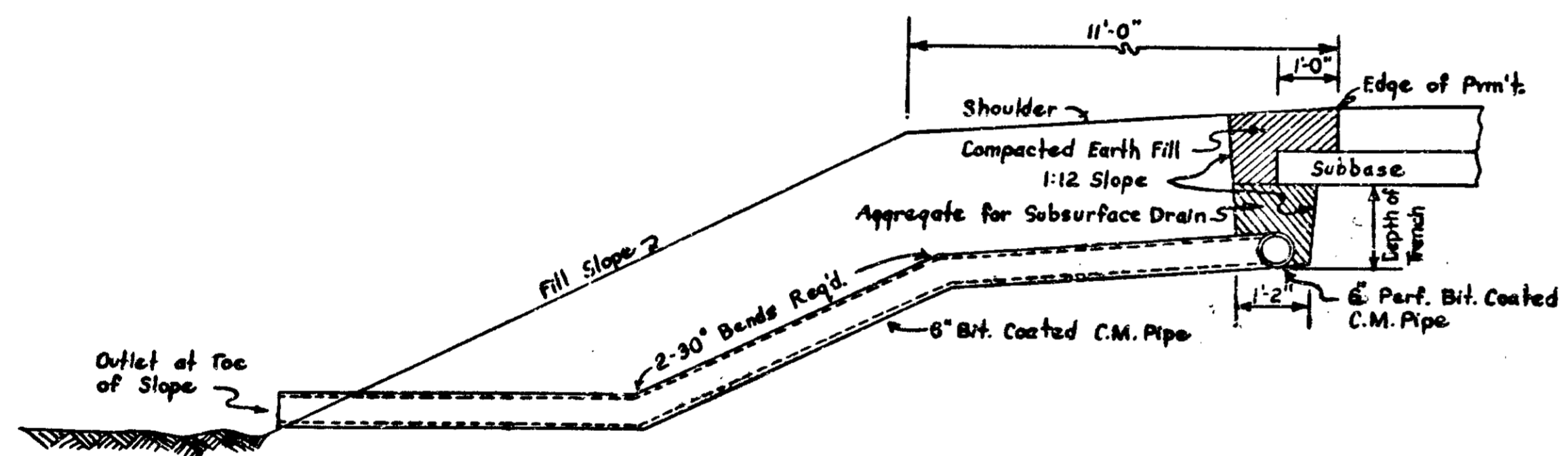


Note: Where any part of fill requires a 2:1 slope, that slope shall be continued throughout the fill on that side.

Scale 1/2"=1 Ft.

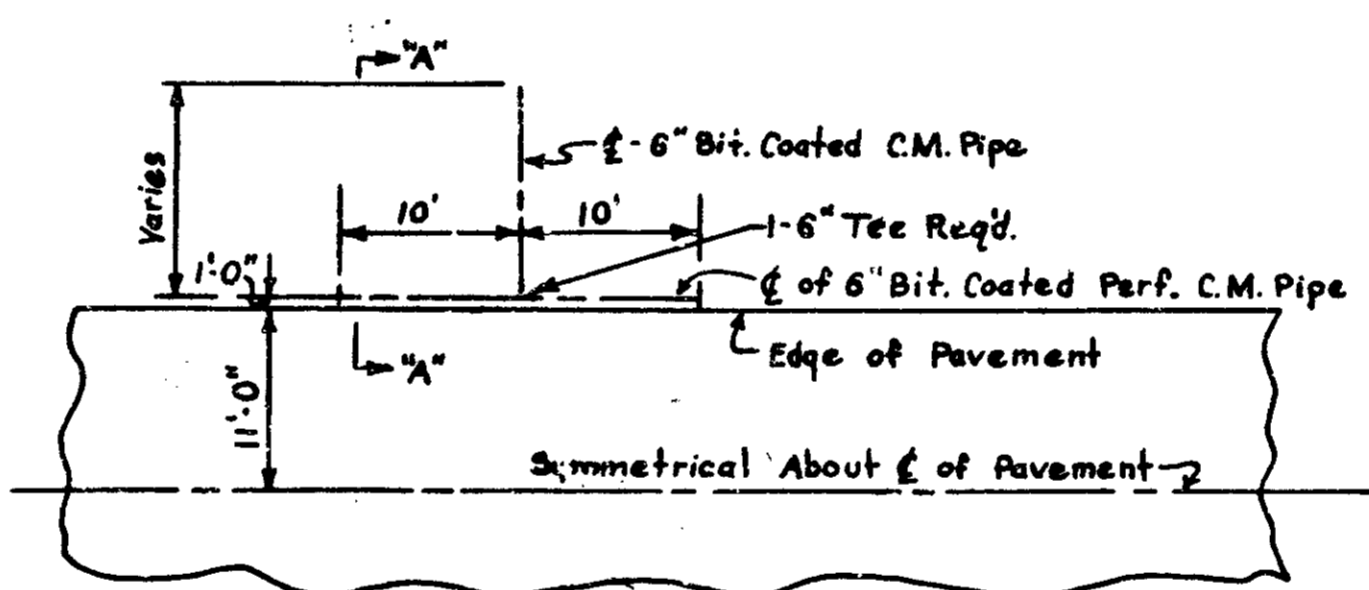
\* Variable from ditch line to a point 3'-0" from Right of Way Line (R/W 80') Cut 2'-9" to 5'-0"

Cut to be difference in elevation between ditch line and original ground line at a point 3'-0" from R/W Line (80' R/W)



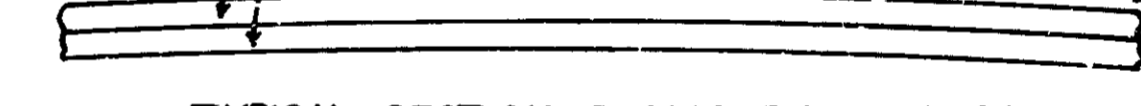
SECTION A-A  
Not to Scale

SUBSURFACE DRAINS AT SAGS  
(Location by Engineer)



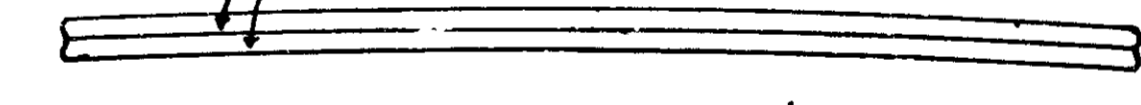
HALF PLAN  
Scale: 1"=10'-0"

4" Bituminous Mixture for Apps. or Compacted Aggregate  
3" Salvaged Road Material



TYPICAL SECTION-PUBLIC ROAD APPROACHES

3" Bituminous Mixture for Apps.  
3" Salvaged Road Material



TYPICAL SECTION-PRIVATE DRIVE & MAIL BOX APPROACHES

# TYPICAL CROSS SECTIONS

SCALE:-

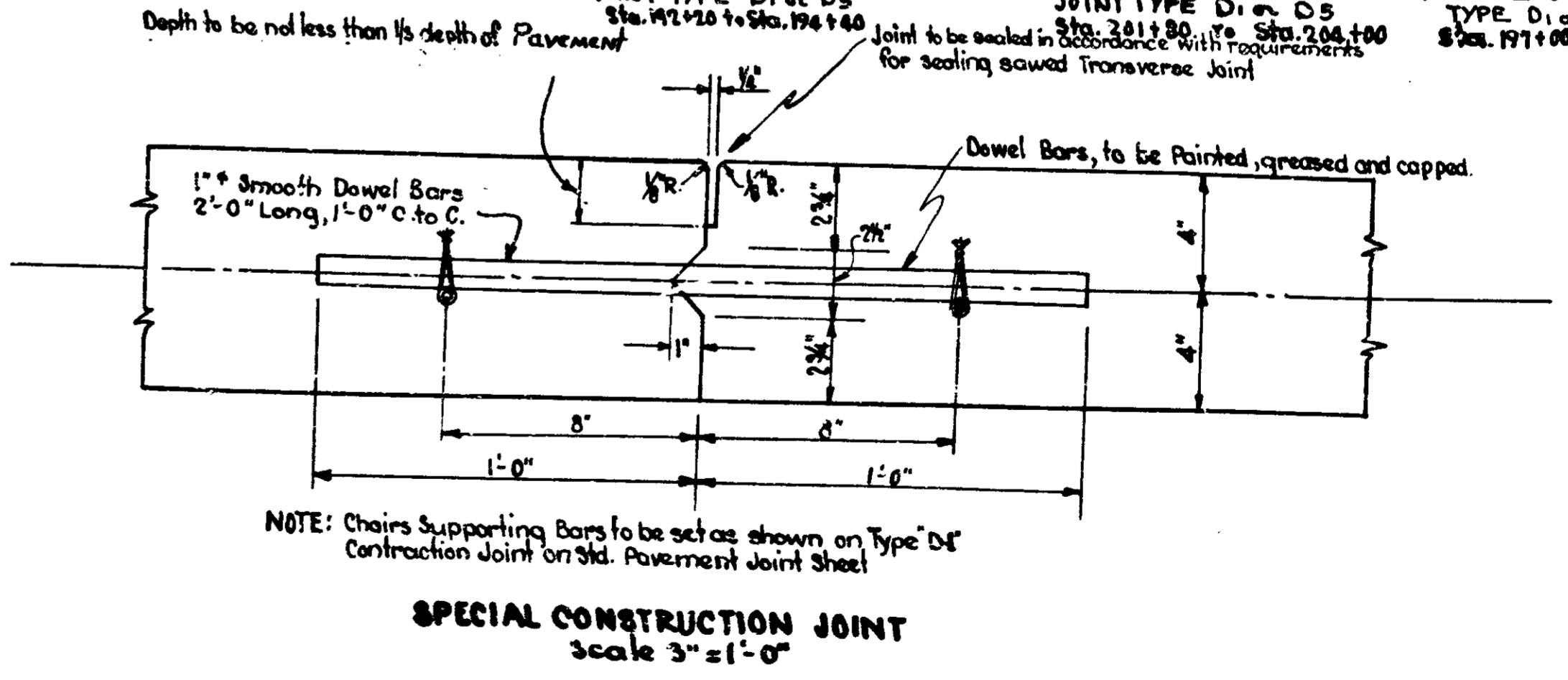
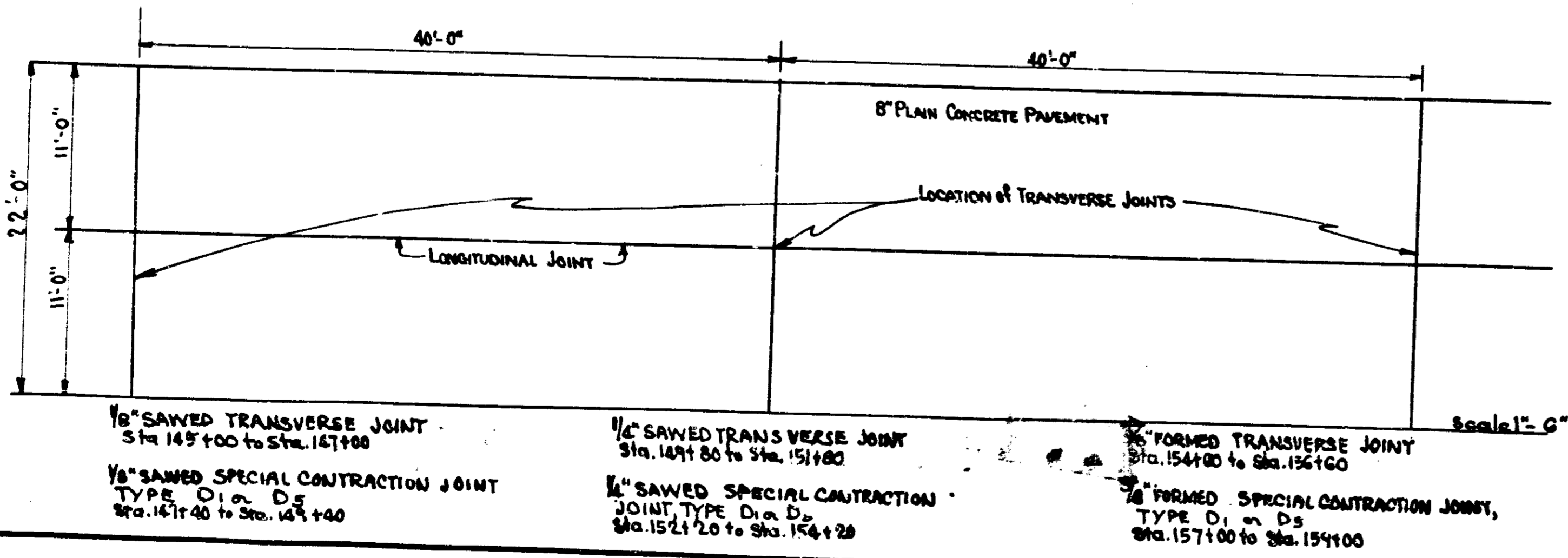
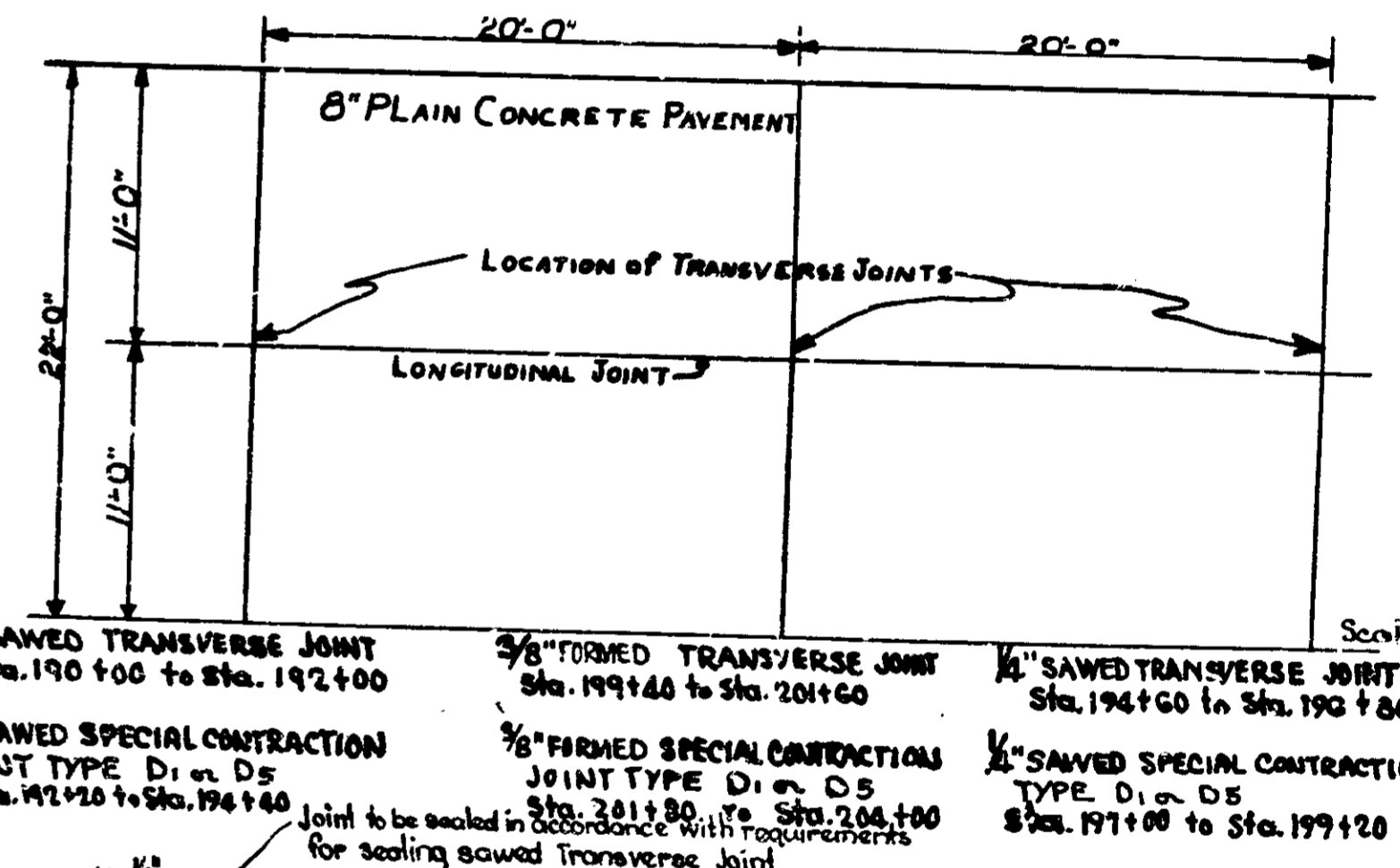
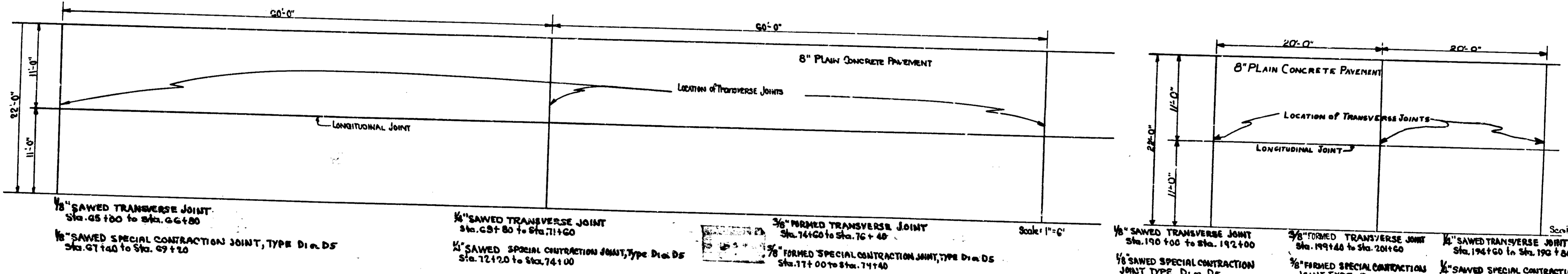
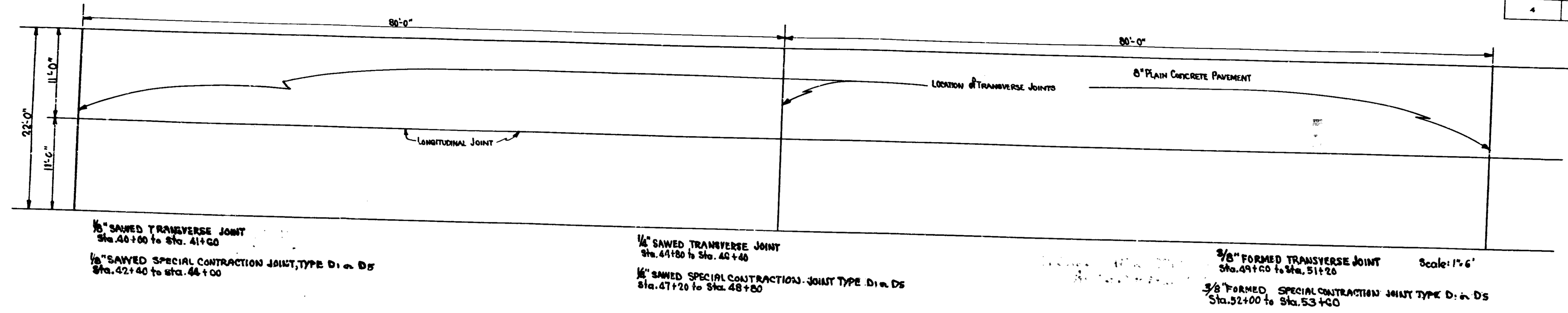
APPROVED *Carl E. Vogelgesang*  
CHIEF ENGINEER - STATE HIGHWAY DEPARTMENT OF INDIANA

APPROVED *Neil R. Collins*  
CHAIRMAN - STATE HIGHWAY DEPARTMENT OF INDIANA

RECOMMENDED FOR APPROVAL *2-18-55*

*W. F. Johnson*  
ENGINEER OF ROAD DESIGN - STATE HIGHWAY DEPARTMENT OF INDIANA

FEDERAL ROAD DIVISION NO.	STATE	PROJ. NO.	FISCAL YEAR	SHEET NO.	TOTAL SHEETS
4	IND.	77(11)	1955	4	61



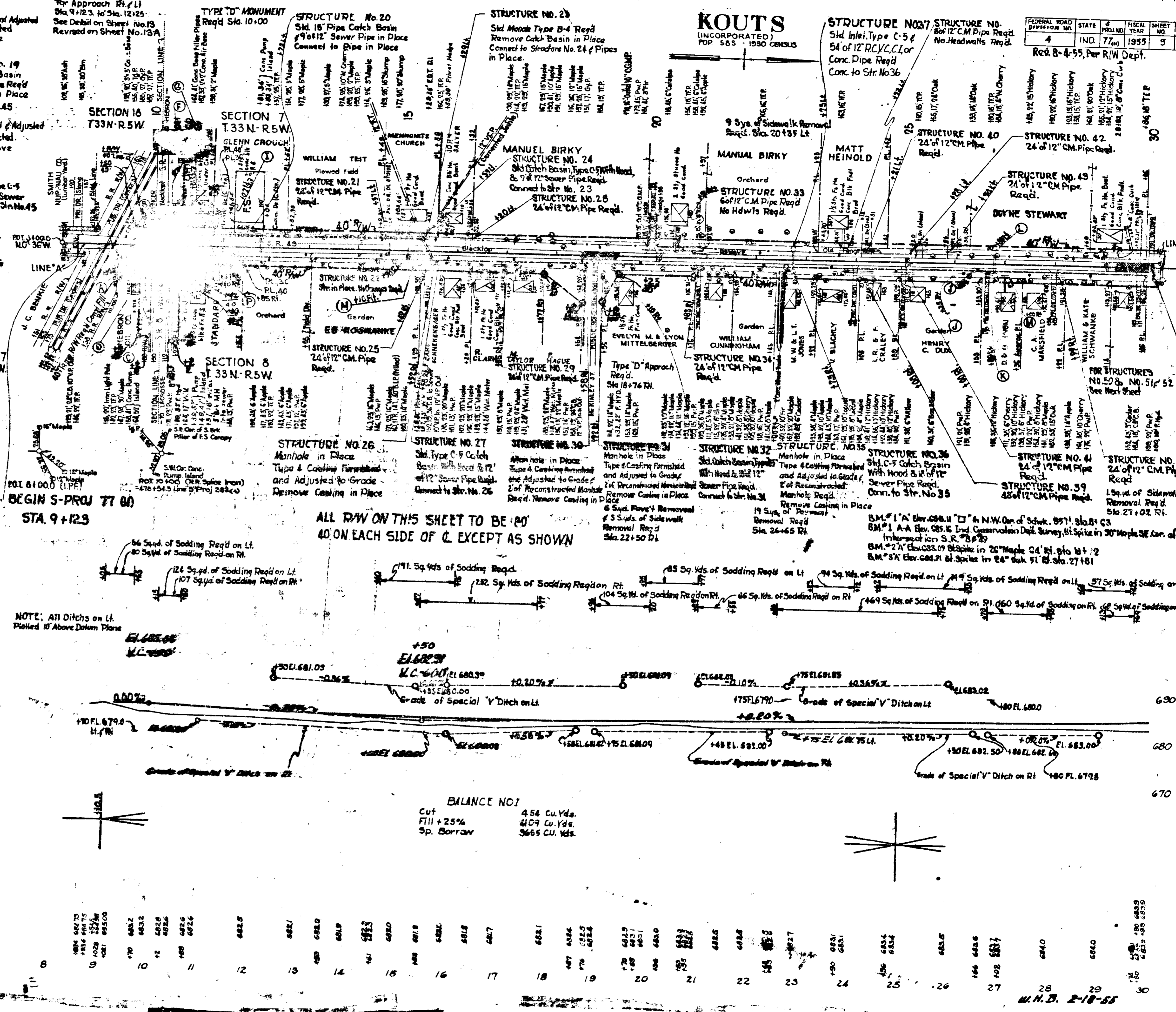
**SPECIAL PAVEMENT JOINTS**  
Scale: As shown

Note: For Revised RW Sta 9+11 to Sta. 11+65 Rt. and Sta. 10+30 to Sta. 11+05 Lt. See Sheet No. 13A

- Sta. 9+60 Pt. STRUCTURE NO. 11 Std. Catch Basin, Type A-1 & 39' of 12" RC, VC, CI, or Conc. Pipe Req'd. Connect to Str. No. 14 Sta. 9+70 Lt.
- STRUCTURE NO. 12 Std. Catch Basin, Type C-5 (With Hood) & 57' of 12" RC, VC, CI, or Conc. Pipe Req'd. Conn. to Str. No. 14 Sta. 9+80 Rt.
- STRUCTURE NO. 13 Std. 15" Pipe Catch Basin & 6' of 12" Sewer Pipe Req'd. Connect to 8" Pipe in Place
- STRUCTURE NO. 14 24" of 12" CM Pipe Req'd Sta. 27+02 Rt.
- STRUCTURE NO. 15 6" of 12" CM Pipe Req'd. No Headwalls Req'd. Sta. 15+10 Rt.
- STRUCTURE NO. 22A 22" of 12" CM Pipe Req'd
- Sta. 9+89 Rt. STRUCTURE NO. 14 Manhole in Place Type 4 Casting Furnished and Adjusted to Grade. Remove Casting in Place Sta. 10+40 Rt.
- STRUCTURE NO. 15 Std. Catch Basin, Type A-3 & 18' of 12" RC, VC, CI, or Conc. Pipe Req'd. Connect to Str. No. 15 See Detail on Sheet No. 15
- STRUCTURE NO. 16 10' x 40' Lt. Std. Catch Basin, Type A-3 & 15' of 12" Sewer Pipe Req'd. Connect to Str. No. 17 See Detail on Sheet No. 15
- STA. 10+65 Lt. STRUCTURE NO. 17 Std. Manhole Type B-4 Req'd. Connect to Pipe in Place and Str. No. 16 BENCHMARK POST REQ'D Sta. 9+50 Lt.
- Sta. 10+85 Rt. STRUCTURE NO. 17 Std. 15" Pipe Catch Basin & 9' of 12" Sewer Pipe Connect to Pipe in Place
- Sta. 10+87 Rt. STRUCTURE NO. 18 Manhole in Place Type 4 Casting Furnished and Adjusted to Grade 2' of Reconstructed Manhole Req'd. Remove Casting in Place Sta. 10+00
- STRUCTURE NO. 19 Std. 15" Pipe Catch Basin & 9' of 12" Sewer Pipe Req'd. Connect to Pipe in Place Sta. 10+40 Rt.
- STRUCTURE NO. 20 Std. 15" Pipe Catch Basin & 9' of 12" Sewer Pipe in Place Connect to Pipe in Place
- STRUCTURE NO. 21 24" of 12" CM Pipe Req'd.
- STRUCTURE NO. 22 24" of 12" CM Pipe Req'd.
- STRUCTURE NO. 23 Std. Manhole Type B-4 Req'd. Remove Catch Basin in Place. Connect to Structure No. 24 & Pipes in Place
- STRUCTURE NO. 24 Std. Catch Basin, Type C-5 (With Hood) & 9' of 12" Sewer Pipe Req'd. Connect to Str. No. 25
- STRUCTURE NO. 25 24" of 12" CM Pipe Req'd.
- STRUCTURE NO. 26 Manhole in Place Type 4 Casting Furnished and Adjusted to Grade. Remove Casting in Place
- STRUCTURE NO. 27 Std. Type C-5 Catch Basin With Hood & 12' of 12" Sewer Pipe Req'd. Connect to Str. No. 26
- STRUCTURE NO. 28 24" of 12" CM Pipe Req'd.
- STRUCTURE NO. 29 24" of 12" CM Pipe Req'd.
- STRUCTURE NO. 30 Manhole in Place Type 4 Casting Furnished and Adjusted to Grade 2' of Reconstructed Manhole Req'd. Remove Casting in Place
- STRUCTURE NO. 31 Manhole in Place Type 4 Casting Furnished and Adjusted to Grade 2' of Reconstructed Manhole Req'd. Remove Casting in Place
- STRUCTURE NO. 32 Std. Catch Basin, Type C-5 (With Hood) & 12' of 12" Sewer Pipe Req'd. Connect to Str. No. 31
- STRUCTURE NO. 33 6" of 12" CM Pipe Req'd. No Hdws Req'd.
- STRUCTURE NO. 34 24" of 12" CM Pipe Req'd.
- STRUCTURE NO. 35 19' Sq. Yds. of Sodding Req'd. Removal Req'd. Sta. 26+65 Rt.
- STRUCTURE NO. 36 Manhole in Place Type 4 Casting Furnished and Adjusted to Grade 2' of Reconstructed Manhole Req'd. Remove Casting in Place
- STRUCTURE NO. 37 54' of 12" RC, VC, CI, or Conc. Pipe Req'd. Conc. to Str. No. 36
- STRUCTURE NO. 40 24" of 12" CM Pipe Req'd.
- STRUCTURE NO. 42 24" of 12" CM Pipe Req'd.
- STRUCTURE NO. 43 24" of 12" CM Pipe Req'd.
- STRUCTURE NO. 44 15' Sq. Yds. of Sodding Req'd. Removal Req'd. Sta. 27+02 Rt.
- STRUCTURE NO. 45 15' Sq. Yds. of Sodding Req'd. Removal Req'd. Sta. 27+02 Rt.
- STRUCTURE NO. 46 15' Sq. Yds. of Sodding Req'd. Removal Req'd. Sta. 27+02 Rt.
- STRUCTURE NO. 47 15' Sq. Yds. of Sodding Req'd. Removal Req'd. Sta. 27+02 Rt.
- STRUCTURE NO. 48 15' Sq. Yds. of Sodding Req'd. Removal Req'd. Sta. 27+02 Rt.
- STRUCTURE NO. 49 15' Sq. Yds. of Sodding Req'd. Removal Req'd. Sta. 27+02 Rt.
- STRUCTURE NO. 50 15' Sq. Yds. of Sodding Req'd. Removal Req'd. Sta. 27+02 Rt.
- STRUCTURE NO. 51 15' Sq. Yds. of Sodding Req'd. Removal Req'd. Sta. 27+02 Rt.
- STRUCTURE NO. 52 15' Sq. Yds. of Sodding Req'd. Removal Req'd. Sta. 27+02 Rt.
- STRUCTURE NO. 53 15' Sq. Yds. of Sodding Req'd. Removal Req'd. Sta. 27+02 Rt.
- STRUCTURE NO. 54 15' Sq. Yds. of Sodding Req'd. Removal Req'd. Sta. 27+02 Rt.
- STRUCTURE NO. 55 15' Sq. Yds. of Sodding Req'd. Removal Req'd. Sta. 27+02 Rt.
- STRUCTURE NO. 56 15' Sq. Yds. of Sodding Req'd. Removal Req'd. Sta. 27+02 Rt.
- STRUCTURE NO. 57 15' Sq. Yds. of Sodding Req'd. Removal Req'd. Sta. 27+02 Rt.
- STRUCTURE NO. 58 15' Sq. Yds. of Sodding Req'd. Removal Req'd. Sta. 27+02 Rt.
- STRUCTURE NO. 59 15' Sq. Yds. of Sodding Req'd. Removal Req'd. Sta. 27+02 Rt.
- STRUCTURE NO. 60 15' Sq. Yds. of Sodding Req'd. Removal Req'd. Sta. 27+02 Rt.

TYPICAL CROSS SECTIONS AS SHOWN ON SHEET NO. 2, TO BE USED ON THIS PROJECT. STATE HIGHWAY COMMISSION OF INDIANA STANDARD SPECIFICATIONS DATED 1952 TO BE USED WITH THESE PLANS. STANDARDS UNDER DATES AS LISTED IN INDEX ON TITLE SHEET TO BE USED ON THIS PROJECT. GRADE LINE AS SHOWN ON PROFILE REPRESENTS TOP OF FINISHED SURFACE. ALL DITCHES OF 1% AND OVER SHALL BE SODDED EXCEPT WHERE DITCH IS IN ROCK CUT OR WHERE PAVED SIDE DITCH IS TO BE CONSTRUCTED. ALL SHOULDERS CUT AND FILL SLOPES SHALL BE PLAIN OR MULCHED SEEDS EXCEPT WHERE SODDING IS SPECIFIED. SHOULDERS ARE TO BE SODDED AS SHOWN ON MISCELLANEOUS STANDARD SHEET "B". SODDING SHALL BE PLACED ALONG PAVED SIDE DITCH AS SHOWN ON MISCELLANEOUS STANDARD SHEET "E". EXCAVATION QUANTITIES AS SHOWN ON PLAN AND PROFILE SHEETS, INCLUDE ESTIMATED EXCAVATION FOR PRIVATE AND PUBLIC APPROACHES. SEE TABLE ON SHEET NO. 15. PUBLIC ROAD APPROACHES SHALL BE CONSTRUCTED TO A DEPTH OF 8" THE TOP 4 INCHES SHALL CONSIST OF BITUMINOUS MIXTURE FOR APPROACHES OR COMPACTED AGGREGATE, AND THE BOTTOM 4 INCHES SHALL CONSIST OF SALVAGED ROAD MATERIAL. OTHER DETAILS TO BE THE SAME AS SHOWN ON MISCELLANEOUS STANDARD SHEET "I". PRIVATE DRIVE AND MAIL BOX APPROACHES SHALL BE CONSTRUCTED TO A DEPTH OF 6" INCHES. THE TOP 3 INCHES SHALL CONSIST OF BITUMINOUS MIXTURE FOR APPROACHES, AND THE BOTTOM 3 INCHES SHALL CONSIST OF SALVAGED ROAD MATERIAL. OTHER DETAILS TO BE THE SAME AS SHOWN ON MISCELLANEOUS STANDARD SHEETS "S" & "H". QUANTITIES FOR PIPE CULVERT HEADWALLS ARE BASED ON USING STANDARD HEADWALLS FOR RETAINING 2:1 SLOPES & PRIVATE DRIVE HEADWALLS FOR RETAINING 4:1 SLOPES.

Sta.	VC=200	VC=200	VC=200	VC=200	VC=200	VC=200	VC=200	VC=200	VC=200
680	680.00	680.00	680.00	680.00	680.00	680.00	680.00	680.00	680.00
681	681.00	681.00	681.00	681.00	681.00	681.00	681.00	681.00	681.00
682	682.00	682.00	682.00	682.00	682.00	682.00	682.00	682.00	682.00
683	683.00	683.00	683.00	683.00	683.00	683.00	683.00	683.00	683.00
684	684.00	684.00	684.00	684.00	684.00	684.00	684.00	684.00	684.00
685	685.00	685.00	685.00	685.00	685.00	685.00	685.00	685.00	685.00
686	686.00	686.00	686.00	686.00	686.00	686.00	686.00	686.00	686.00
687	687.00	687.00	687.00	687.00	687.00	687.00	687.00	687.00	687.00
688	688.00	688.00	688.00	688.00	688.00	688.00	688.00	688.00	688.00
689	689.00	689.00	689.00	689.00	689.00	689.00	689.00	689.00	689.00
690	690.00	690.00	690.00	690.00	690.00	690.00	690.00	690.00	690.00



FEDERAL ROAD DISTRICT NO.	STATE	PROJ. NO.	FISCAL YEAR	SHEET NO.	TOTAL SHEETS
4	IND.	77	1955	5	6

Reg. 8-4-55, Per R/W Dept.

12/36  
8/36  
Evans  
H. Neuling

384

12/36  
8/36

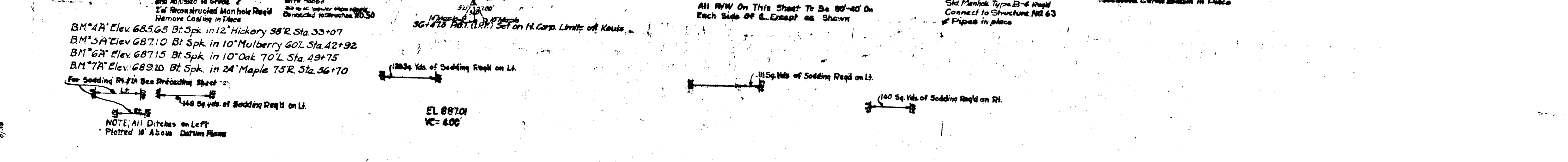
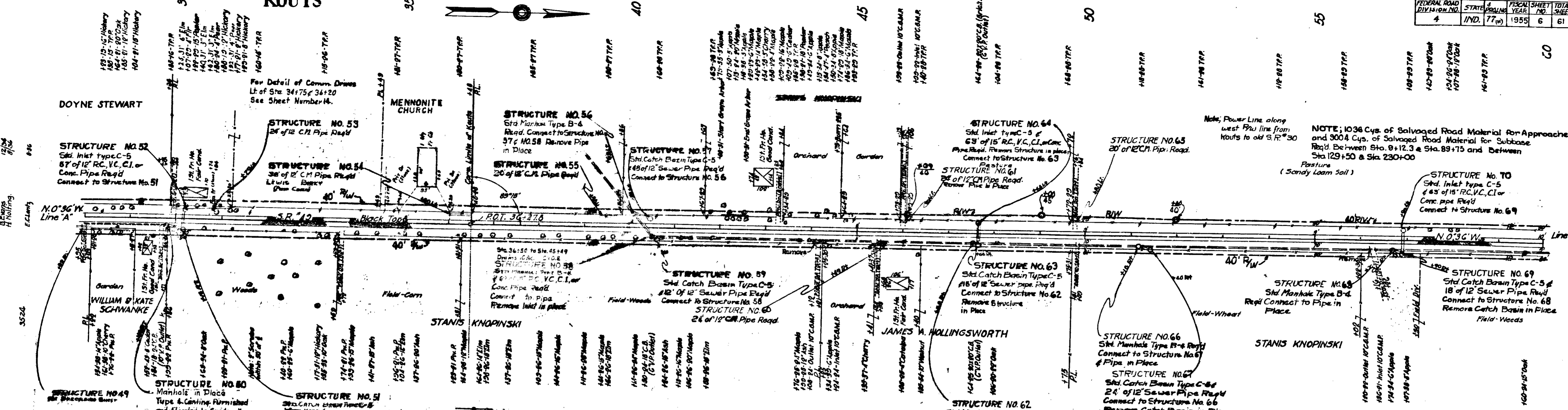
Evans  
H. Neuling  
W.H. Bachob

382

W.H.B. 2-18-55

FEDERAL ROAD DIVISION NO.	STATE	PROJ. NO.	FISCAL YEAR	SHEET NO.	TOTAL SHEETS
4	IND.	77 (a)	1955	6	61

# KOUTS



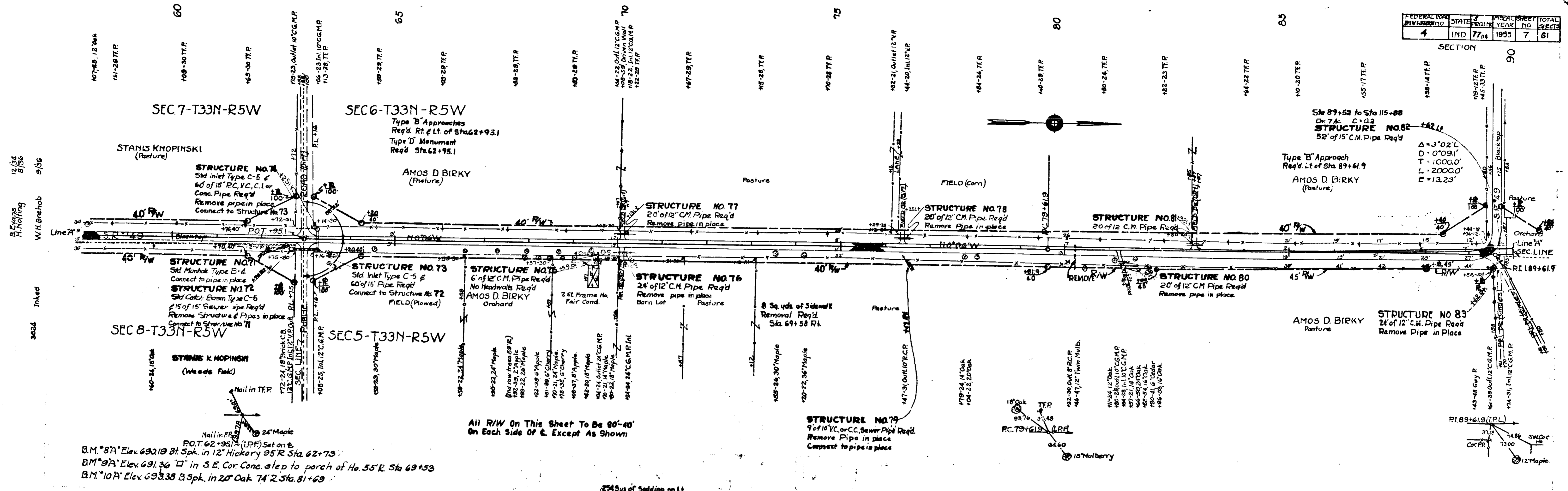
Station	Cut	Fill +25%	Sp. Borrow
28			
29			
30			
31			
32			
33			
34			
35			
36			
37			
38			
39			
40			
41			
42			
43			
44			
45			
46			
47			
48			
49			
50			
51			
52			
53			
54			
55			
56			
57			
58			
59			
60			

**BALANCE NO. 2**  
 Cut 414 Cu.Yd.  
 Fill+25% 6128 Cu.Yd.  
 Sp. Borrow 5714 Cu.Yd.

**BALANCE NO. 3**  
 Cut 391 Cu.Yd.  
 Fill+25% 8400 Cu.Yd.  
 Sp. Borrow 8009 Cu.Yd.

FEDERAL ROAD DIVISION NO.	STATE	PROJECT NO.	YEAR	SHEET NO.	TOTAL SHEETS
4	IND	77th	1955	7	81

SECTION 90



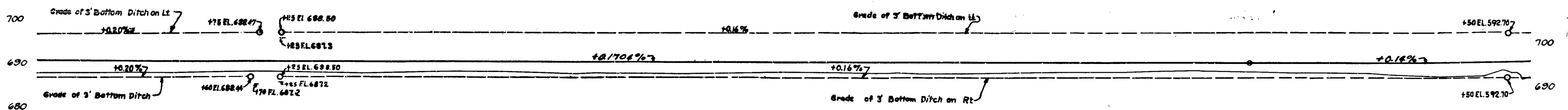
12/34  
8/36  
9/36  
A. Evans  
R. Hafferty  
W.H. Brethob  
Inked  
3026

12/34  
8/36  
9/36  
A. Evans  
R. Hafferty  
W.H. Brethob  
3026

P.O.T. 62+95.1 (L.P.F.) Set on E. B.M. 87A Elev. 690.19 8 1/2 Spk. in 12\"/>

All R/W On This Sheet To Be 80'-40' On Each Side Of & Except As Shown

Note: All Ditches on Left Plotted 10' Above Datum Plane



BALANCE NO. 4

Cut	564 Cu. Yd.
Fill + 25%	8621 Cu. Yd.
Sp. Borrow	8057 Cu. Yd.

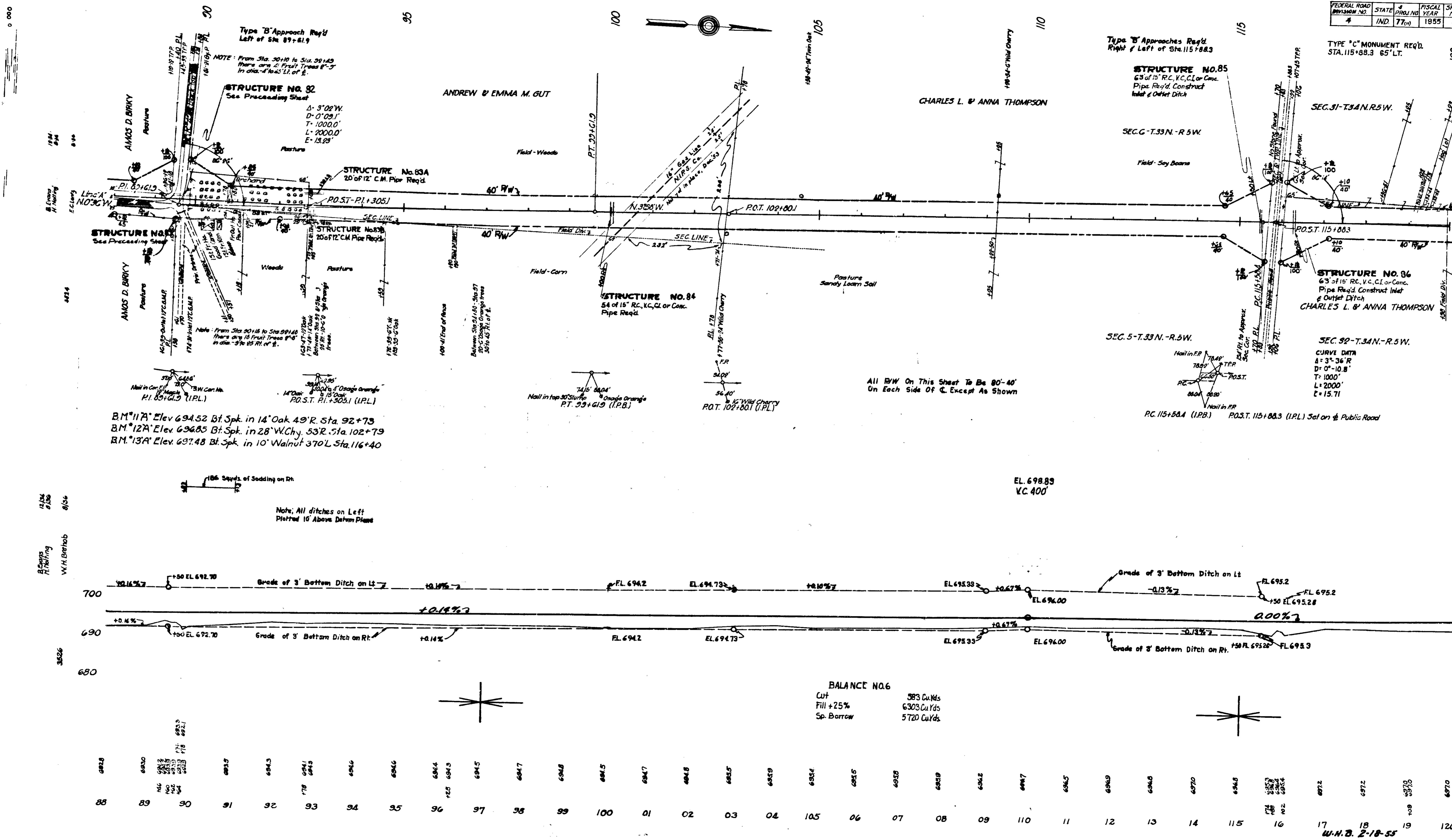
BALANCE NO. 5

Cut	542 Cu. Yd.
Fill + 25%	7260 Cu. Yd.
Sp. Borrow	6718 Cu. Yd.



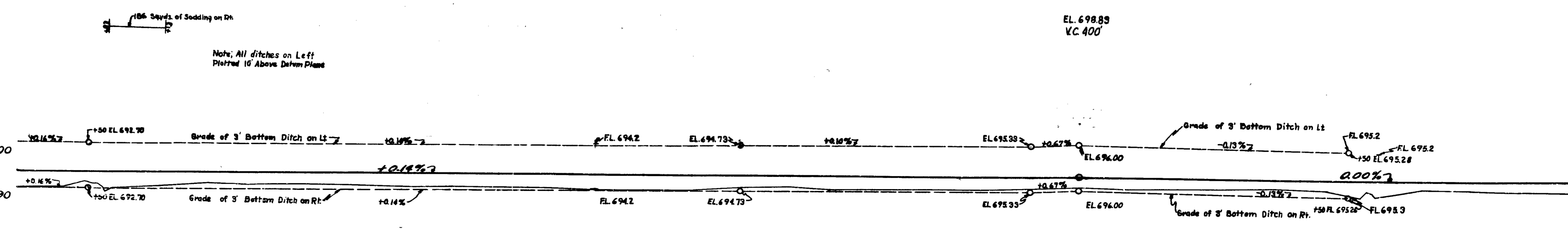
W.H.B. 2-18-55

FEDERAL ROAD DIVISION NO.	STATE	PROJ. NO.	FISCAL YEAR	SHEET NO.
4	IND.	77(1)	1955	8



BM 117A Elev 694.52 Bt. Spk. in 14" Oak 49' R. Sta. 92+73  
 BM 127A Elev 696.85 Bt. Spk. in 28" W. Chy. 53' R. Sta. 102+79  
 BM 137A Elev 697.48 Bt. Spk. in 10" Walnut 370' L. Sta. 116+40

All R/W On This Sheet To Be 80'-40'  
 On Each Side Of C. Except As Shown



**BALANCE NO. 6**  
 CUT 583 Cu Yds  
 FILL +25% 6303 Cu Yds  
 Sp. BORROW 5720 Cu Yds

88	89	90	91	92	93	94	95	96	97	98	99	100	01	02	03	04	05	06	07	08	09	10	11	12	13	14	15	16	17	18	19	20
682.5	683.0	683.2	683.3	683.3	683.4	683.5	683.5	683.5	683.5	683.5	683.5	683.5	683.5	683.5	683.5	683.5	683.5	683.5	683.5	683.5	683.5	683.5	683.5	683.5	683.5	683.5	683.5	683.5	683.5	683.5	683.5	

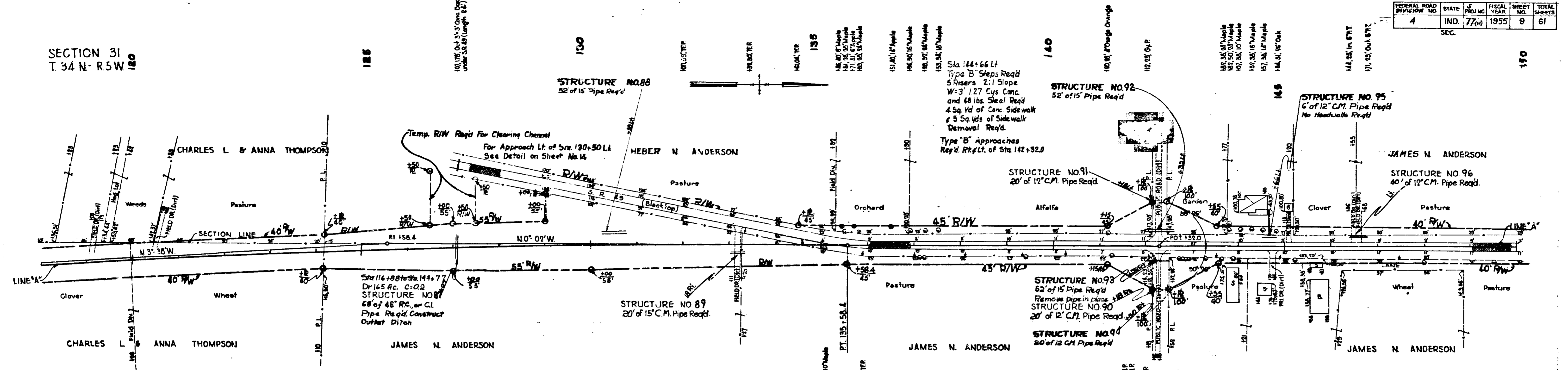
FEDERAL ROAD DIVISION NO.	STATE	FISCAL YEAR	SHEET NO.	TOTAL SHEETS
4	IND.	1955	9	61

SECTION 31  
T. 34 N. R. 5W 180

SECTION 32  
T. 34 N. R. 5W

12-34  
8-36  
B. EVANS  
H. MORTING  
V. P. WILCOX

12-34  
8-36  
B. EVANS  
H. MORTING



A = 3' 56" R  
D = 0' 10.8"  
T = 1000.0'  
L = 2000.0'  
E = 15.71'

All R/W On This Sheet To Be 80'-40' On Each Side Of C. Except As Shown

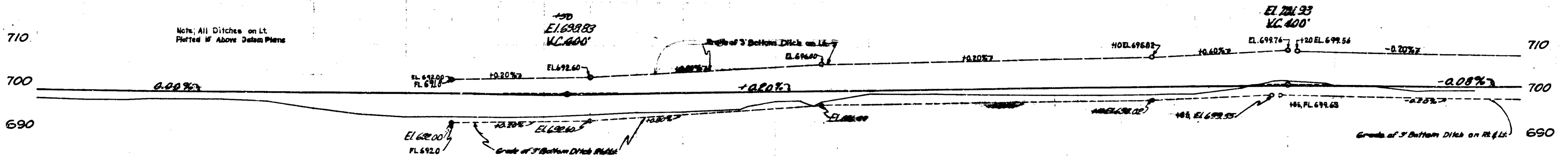
B.M. No. 14" A' Elev. 696.91 Boal spike in 2 1/2" Maple, 200' L. of Sta. 123+50.  
B.M. No. 15" A' Elev. 699.25 " " " 2 1/2" Maple, 85' L. of Sta. 135+35.  
B.M. No. 16" A' Elev. 704.04 " " " 2 1/2" Maple, 50' L. of Sta. 143+82.

No Reference Available  
RL 125+58.4 (L.P.E.)

PT. 135+58.4 (L.P.E.)  
A to R. 45' - 168'-05'L.

PT. 142+37.0 (L.P.L.)  
Set on E. Pub. Rd. R & L.

Note: All Ditches on Lt. Plotted in Above Datum Plane



BALANCE NO. 7  
Cut 390 Cu.Yds  
Fill +25% 12954 Cu.Yds  
Sp. Borrow 12564 Cu.Yds

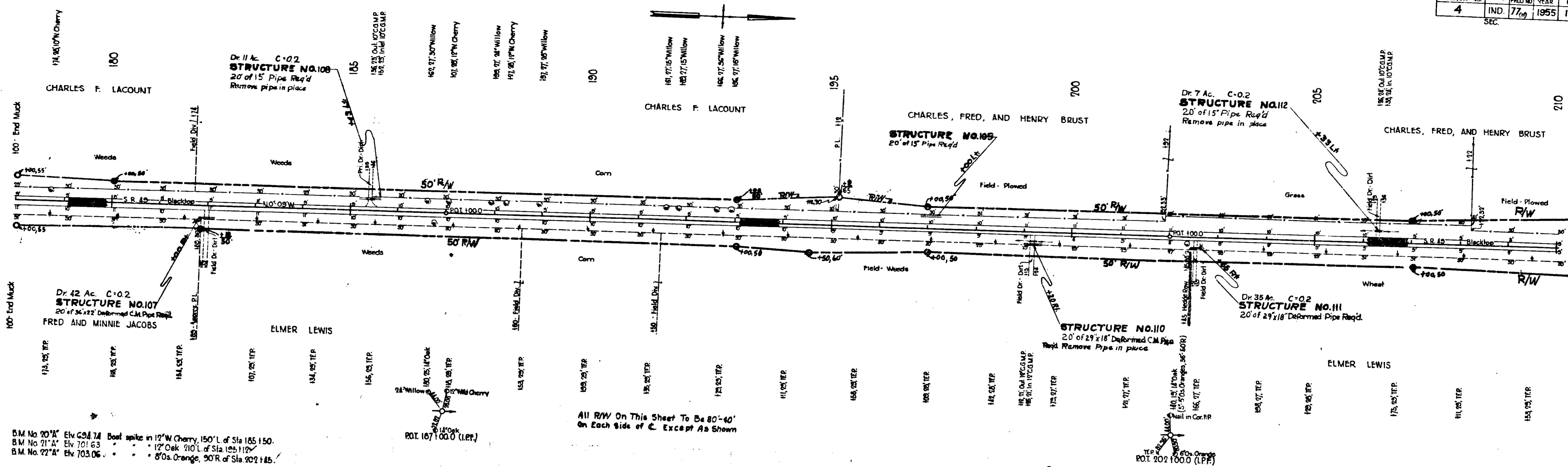
BALANCE NO. 8  
Cut 2699 Cu.Yds  
Fill +25% 4129 Cu.Yds  
Sp. Borrow 1430 Cu.Yds

Station	118	119	120	121	122	123	124	125	126	127	128	129	130	131	132	133	134	135	136	137	138	139	140	141	142	143	144	145	146	147	148	149	150
Elev.	697.2	697.0	697.0	697.0	697.0	697.0	697.0	697.0	697.0	697.0	697.0	697.0	697.0	697.0	697.0	697.0	697.0	697.0	697.0	697.0	697.0	697.0	697.0	697.0	697.0	697.0	697.0	697.0	697.0	697.0	697.0	697.0	697.0

M.H.B. 2-18-55

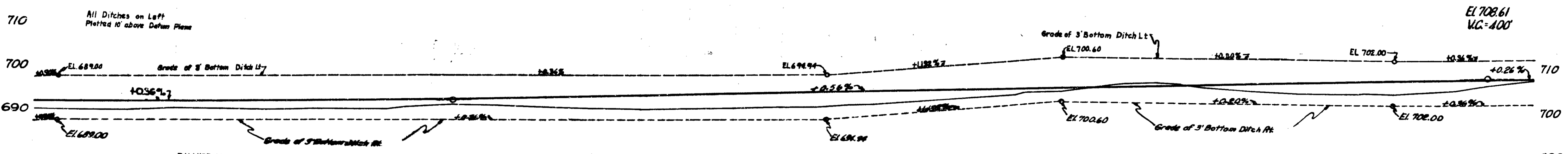
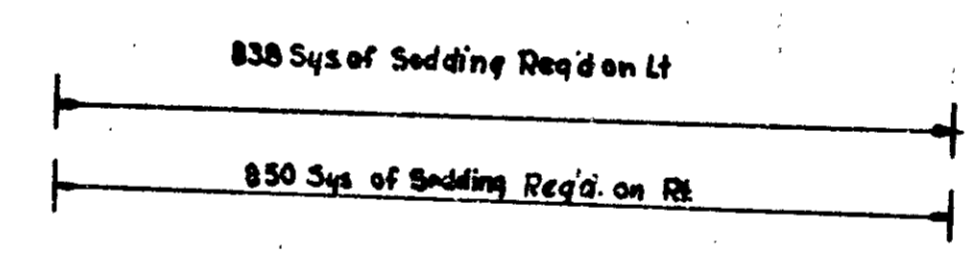






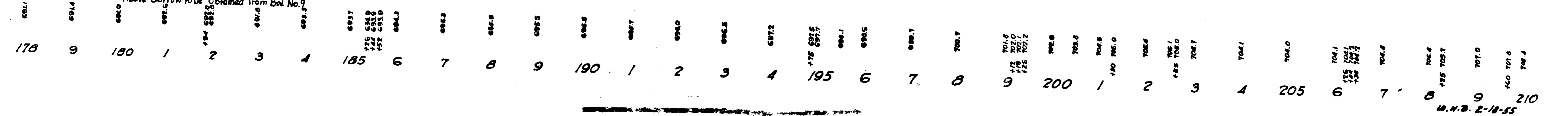
BM No 20 "A" Elev. 694.74 Best spike in 12" W Cherry, 150' L. of Sta 165+50.  
 BM No 21 "A" Elev. 701.63 " " " " 12" Oak, 710' L. of Sta 155+12.  
 BM No 22 "A" Elev. 703.06 " " " " 8" O.s. Orange, 90' R. of Sta. 202+18.5.

All R/W On This Sheet To Be 80'-40' On Each Side of C. Except As Shown



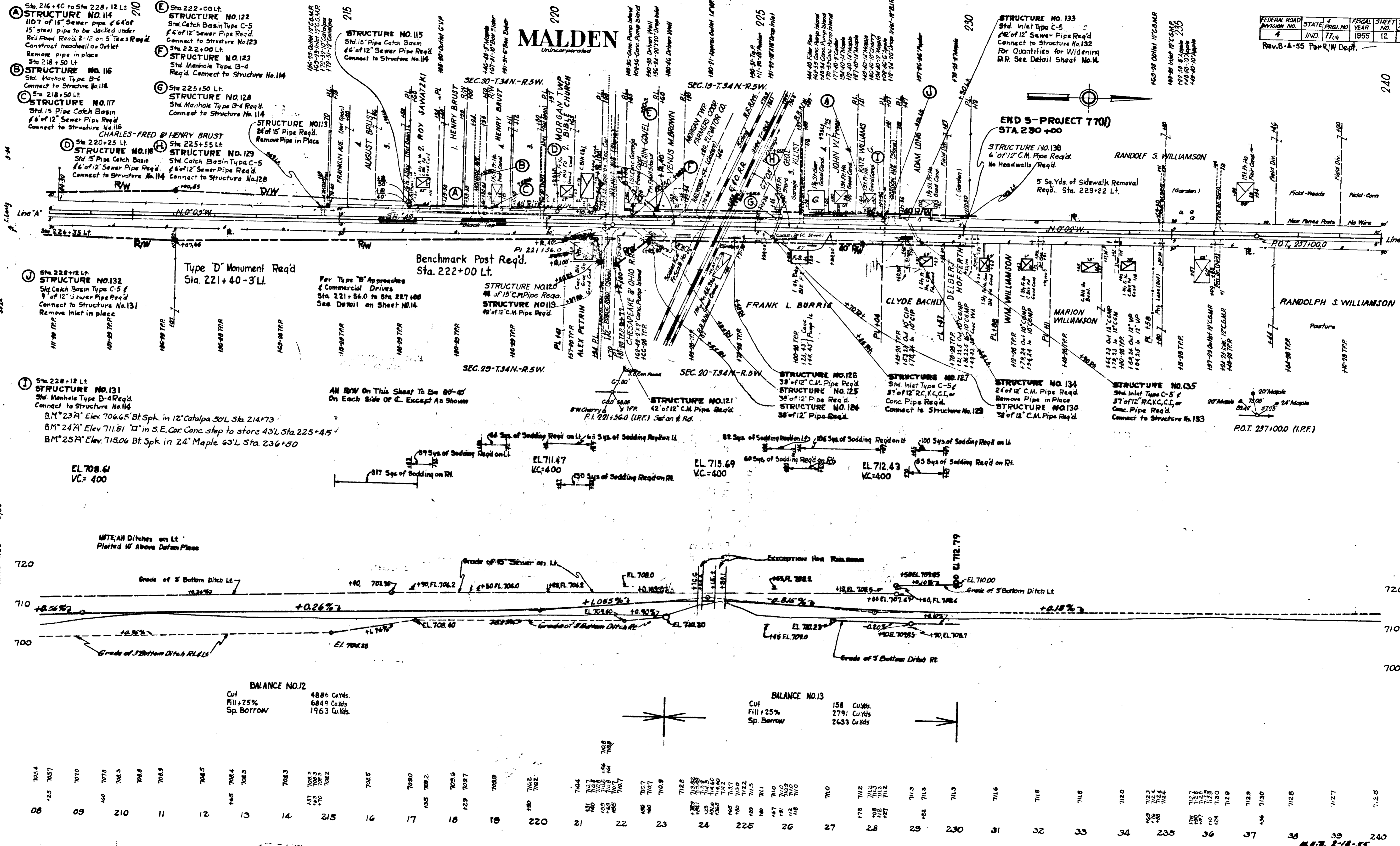
**BALANCE NO. 10**  
 Peat Excavation 9319 CU.YDS.  
 Cut 1113 CU.YDS.  
 Fill + 25% 8045 CU.YDS.  
 Peat Backfill + 15% 8861 CU.YDS.  
 Borrow 2002 CU.YDS.  
 Sp. Borrow 3930 CU.YDS.  
 Grade "B" Sp. Borrow 8861 CU.YDS.  
 Above Borrow to be Obtained from Bal. No. 9

**BALANCE NO. 11**  
 Cut 3792 Cu. Yd.  
 Fill + 25% 7495 Cu. Yds.  
 Sp. Borrow 3703 Cu. Yds.



# MALDEN

Unincorporated

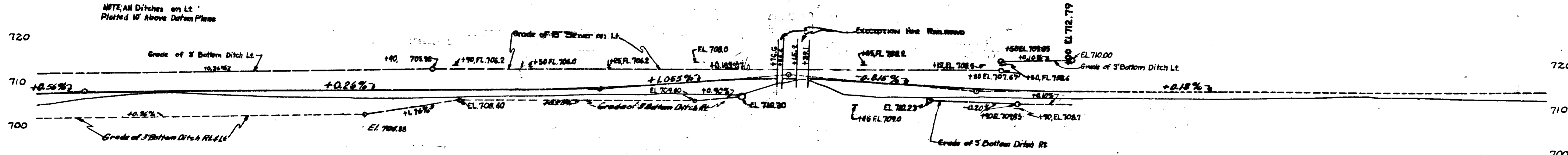


EL 708.61  
VC=400

EL 711.47  
VC=400

EL 715.69  
VC=400

EL 712.43  
VC=400



**BALANCE NO.12**  
Cut 4886 Cu.Yds.  
Fill +25% 6849 Cu.Yds.  
Sp. Borrow 1963 Cu.Yds.

**BALANCE NO.13**  
Cut 158 Cu.Yds.  
Fill +25% 2791 Cu.Yds.  
Sp. Borrow 2633 Cu.Yds.

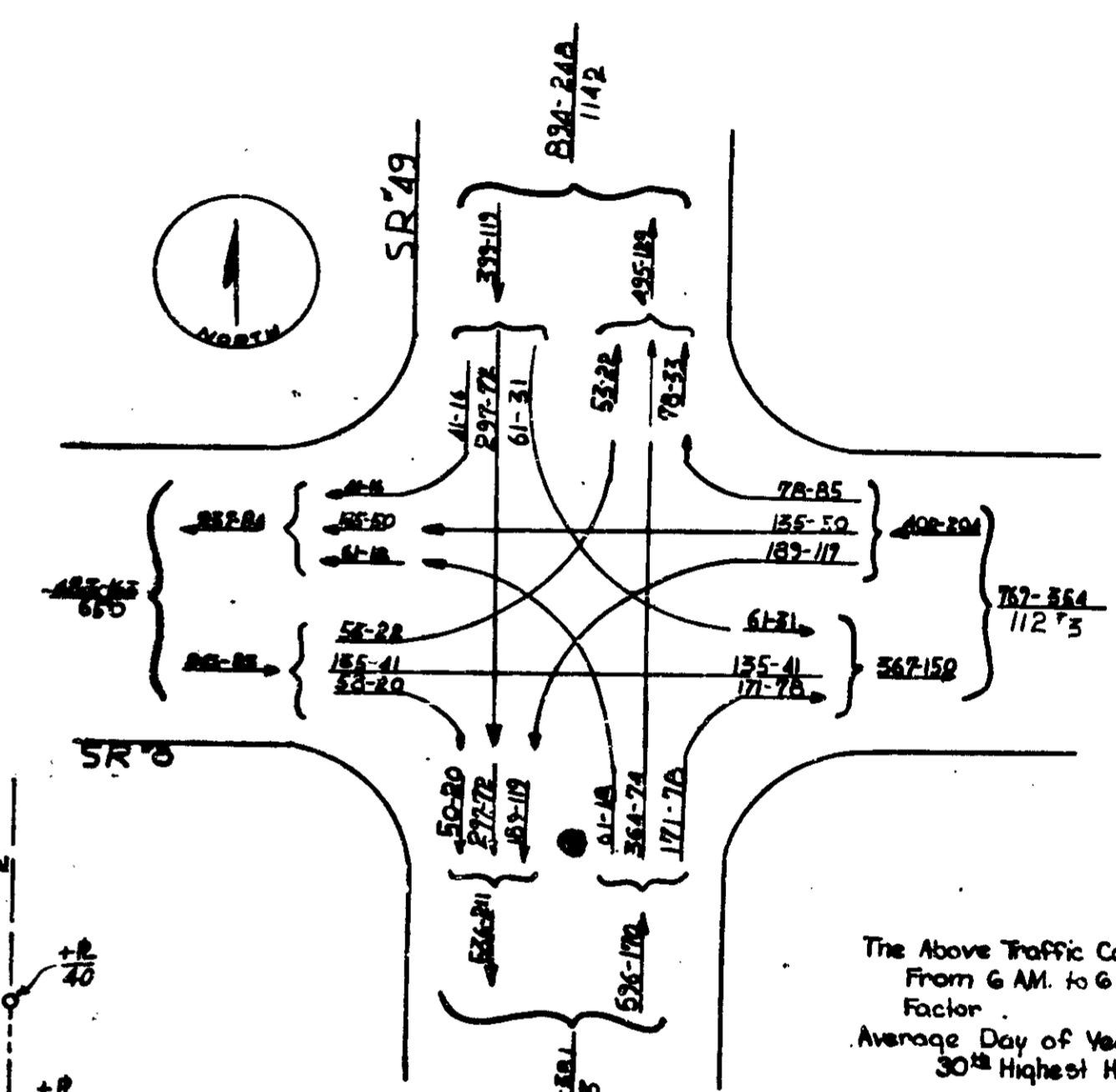
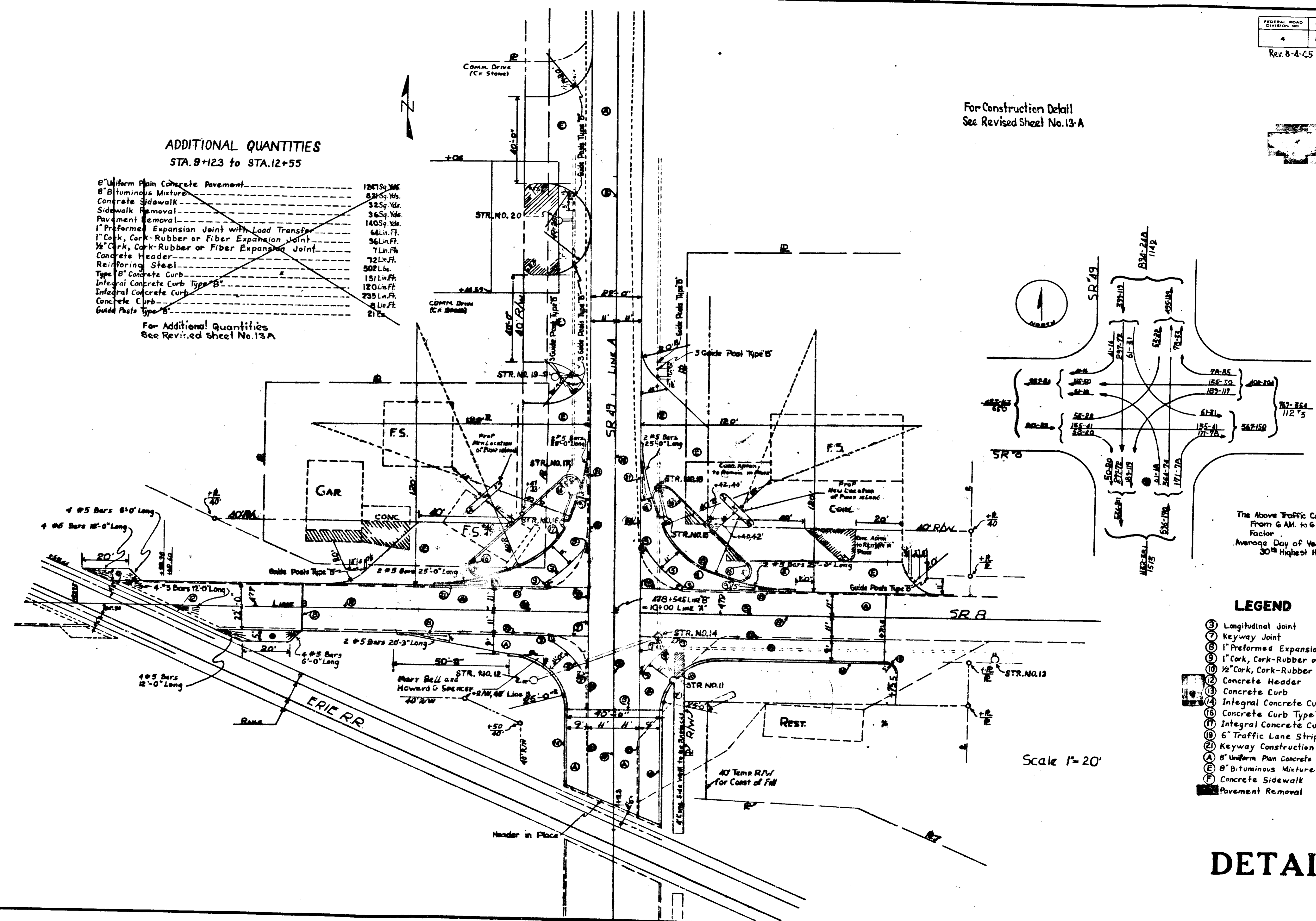
706.4	706.5	706.6	706.7	706.8	706.9	707.0	707.1	707.2	707.3	707.4	707.5	707.6	707.7	707.8	707.9	708.0	708.1	708.2	708.3	708.4	708.5	708.6	708.7	708.8	708.9	709.0	709.1	709.2	709.3	709.4	709.5	709.6	709.7	709.8	709.9	710.0	710.1	710.2	710.3	710.4	710.5	710.6	710.7	710.8	710.9	711.0	711.1	711.2	711.3	711.4	711.5	711.6	711.7	711.8	711.9	712.0	712.1	712.2	712.3	712.4	712.5	712.6	712.7	712.8	712.9	713.0	713.1	713.2	713.3	713.4	713.5	713.6	713.7	713.8	713.9	714.0	714.1	714.2	714.3	714.4	714.5	714.6	714.7	714.8	714.9	715.0	715.1	715.2	715.3	715.4	715.5	715.6	715.7	715.8	715.9	716.0	716.1	716.2	716.3	716.4	716.5	716.6	716.7	716.8	716.9	717.0	717.1	717.2	717.3	717.4	717.5	717.6	717.7	717.8	717.9	718.0	718.1	718.2	718.3	718.4	718.5	718.6	718.7	718.8	718.9	719.0	719.1	719.2	719.3	719.4	719.5	719.6	719.7	719.8	719.9	720.0
-------	-------	-------	-------	-------	-------	-------	-------	-------	-------	-------	-------	-------	-------	-------	-------	-------	-------	-------	-------	-------	-------	-------	-------	-------	-------	-------	-------	-------	-------	-------	-------	-------	-------	-------	-------	-------	-------	-------	-------	-------	-------	-------	-------	-------	-------	-------	-------	-------	-------	-------	-------	-------	-------	-------	-------	-------	-------	-------	-------	-------	-------	-------	-------	-------	-------	-------	-------	-------	-------	-------	-------	-------	-------	-------	-------	-------	-------	-------	-------	-------	-------	-------	-------	-------	-------	-------	-------	-------	-------	-------	-------	-------	-------	-------	-------	-------	-------	-------	-------	-------	-------	-------	-------	-------	-------	-------	-------	-------	-------	-------	-------	-------	-------	-------	-------	-------	-------	-------	-------	-------	-------	-------	-------	-------	-------	-------	-------	-------	-------	-------	-------	-------	-------	-------	-------	-------

For Construction Detail  
See Revised Sheet No. 13-A

**ADDITIONAL QUANTITIES**  
STA. 9+123 to STA. 12+55

8" Uniform Plain Concrete Pavement	12475.46
8" Bituminous Mixture	831.54 Yds.
Concrete Sidewalk	32.54 Yds.
Sidewalk Removal	36.54 Yds.
Pavement Removal	1405.44 Yds.
1" Preformed Expansion Joint with Load Transfer	64 Ln. Ft.
1" Cork, Cork-Rubber or Fiber Expansion Joint	36 Ln. Ft.
1/2" Cork, Cork-Rubber or Fiber Expansion Joint	7 Ln. Ft.
Concrete Header	72 Ln. Ft.
Reinforcing Steel	502 Lbs.
Type "B" Concrete Curb	151 Ln. Ft.
Integral Concrete Curb Type "B"	120 Ln. Ft.
Integral Concrete Curb	235 Ln. Ft.
Concrete Curb	8 Ln. Ft.
Guide Posts Type "B"	21 Ea.

For Additional Quantities  
See Revised Sheet No. 13-A



The Above Traffic Count was Taken  
From 6 A.M. to 6 P.M. April 6, 1954  
Factor  
Average Day of Year 1975-2.1  
30<sup>th</sup> Highest Hour 1975-0.25

**LEGEND**

- (5) Longitudinal Joint
- (7) Keyway Joint
- (8) 1" Preformed Expansion Joint with Load Transfer
- (9) 1" Cork, Cork-Rubber or Fiber Expansion Joint
- (10) 1/2" Cork, Cork-Rubber or Fiber Expansion Joint
- (11) Concrete Header
- (12) Concrete Curb
- (13) Integral Concrete Curb
- (14) Concrete Curb Type "B"
- (15) Integral Concrete Curb Type "B"
- (16) 6" Traffic Lane Stripe
- (21) Keyway Construction Joint
- (A) 8" Uniform Plain Concrete Pavement
- (B) 8" Bituminous Mixture
- (C) Concrete Sidewalk
- (D) Pavement Removal

Scale 1" = 20'

**DETAILS**

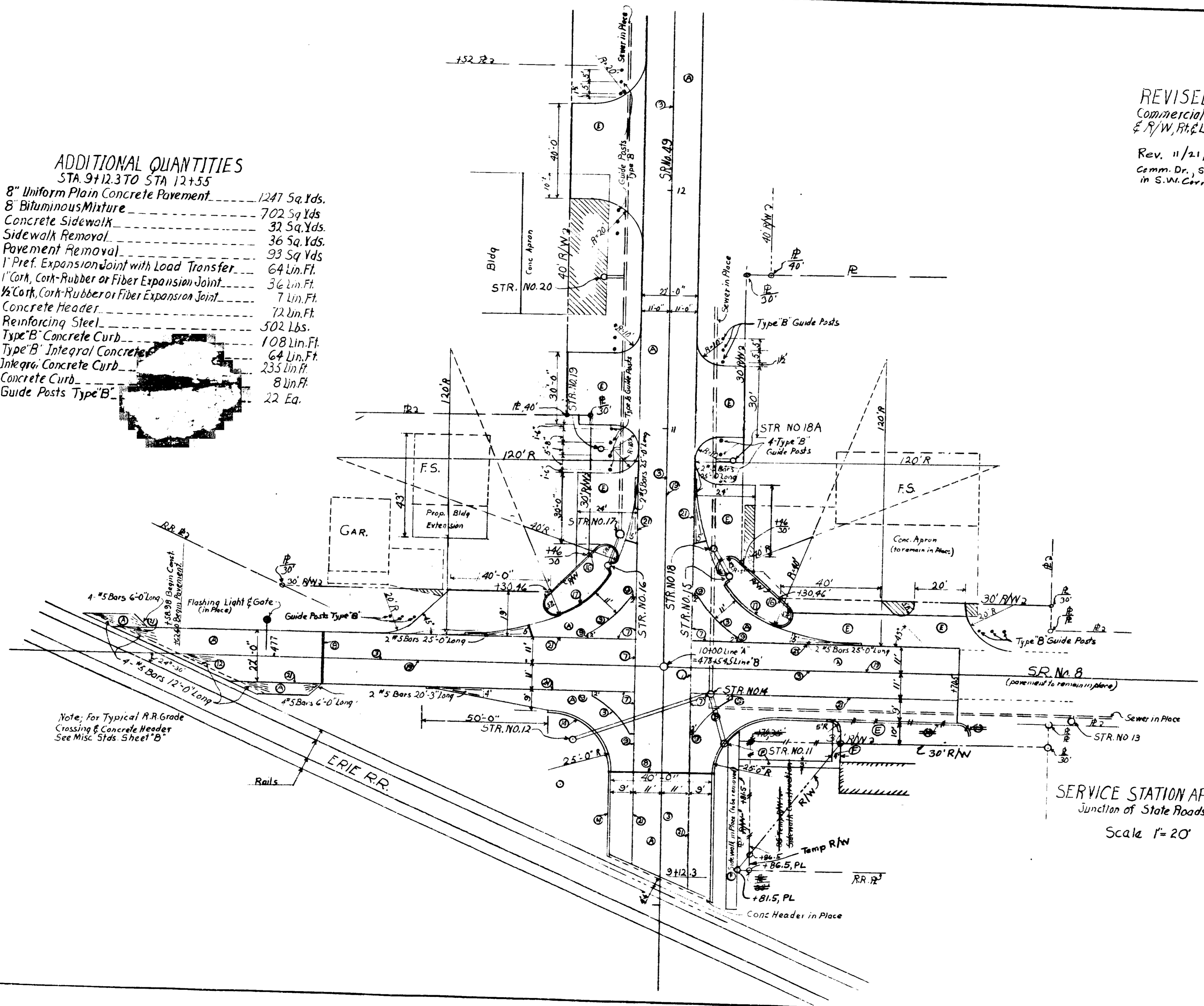
FEDERAL ROAD DIVISION NO.	DATE	PREP. NO.	FISCAL YEAR	SHEET NO.	TOTAL SHEETS
4	IND.	77(1)	1955	13A	61

REVISED 8-4-55  
Commercial Drives Rt. & Lt.  
& R/W, Rt. & Lt.

Rev. 11/21/55 per R/W Dept.  
Comm. Dr., Sidewalk & R/W  
in S.W. Corner

**ADDITIONAL QUANTITIES**  
STA. 9+12.3 TO STA. 12+55

8" Uniform Plain Concrete Pavement	1247 Sq. Yds.
8" Bituminous Mixture	702 Sq. Yds.
Concrete Sidewalk	32 Sq. Yds.
Sidewalk Removal	36 Sq. Yds.
Pavement Removal	93 Sq. Yds.
1" Pref. Expansion Joint with Load Transfer	64 Lin. Ft.
1" Cork, Cork-Rubber or Fiber Expansion Joint	36 Lin. Ft.
1/2" Cork, Cork-Rubber or Fiber Expansion Joint	7 Lin. Ft.
Concrete Header	72 Lin. Ft.
Reinforcing Steel	502 Lbs.
Type "B" Concrete Curb	108 Lin. Ft.
Type "B" Integral Concrete Curb	64 Lin. Ft.
Integral Concrete Curb	235 Lin. Ft.
Concrete Curb	8 Lin. Ft.
Guide Posts Type "B"	22 Ea.



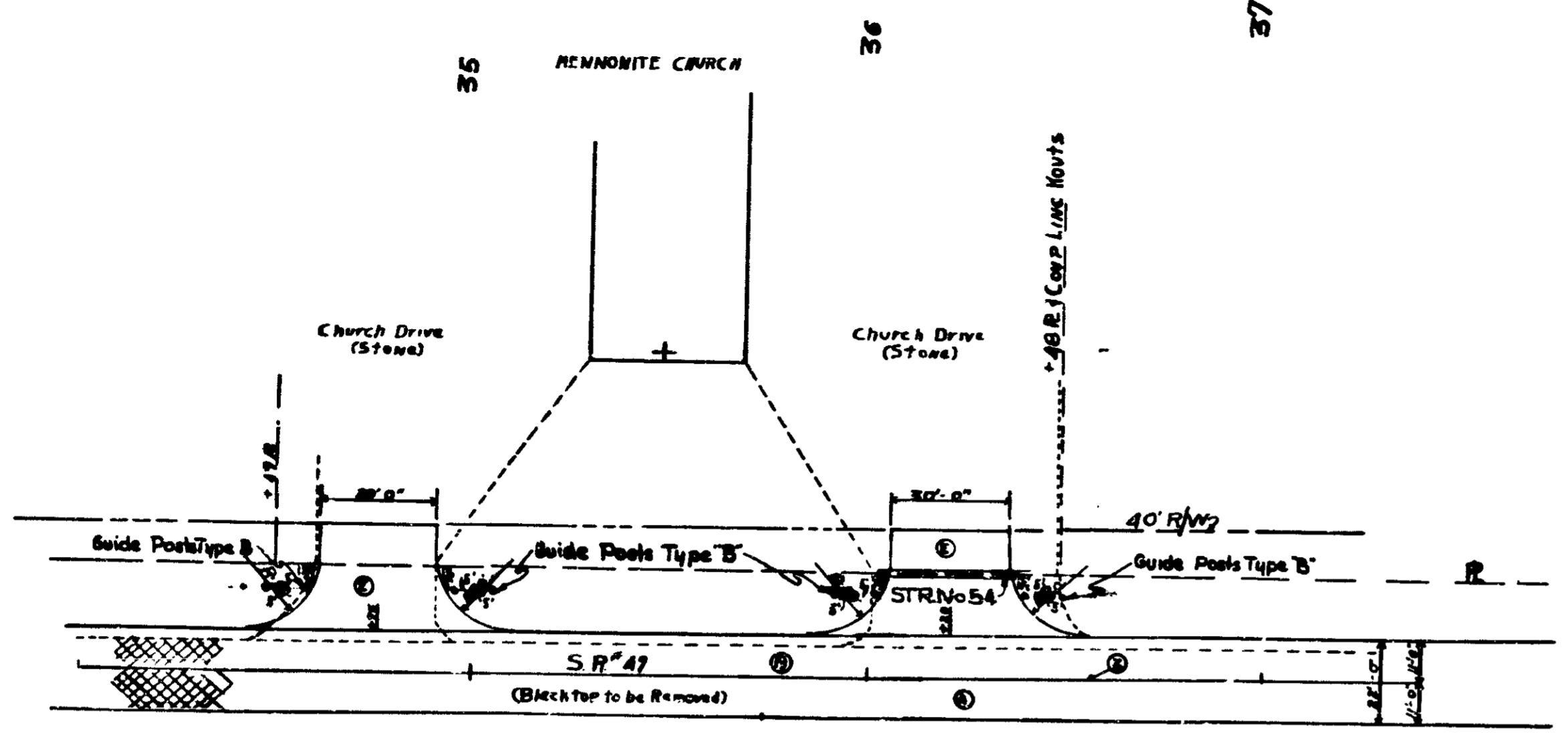
- LEGEND**
- (3) Longitudinal Joint
  - (7) Keyway Joint
  - (8) 1" Preformed Expansion Joint with Load Transfer
  - (9) 1" Cork, Cork-Rubber or Fiber Expansion Joint
  - (10) 1/2" Cork, Cork-Rubber or Fiber Expansion Joint
  - (12) Concrete Header
  - (13) Concrete Curb
  - (14) Integral Concrete Curb
  - (16) Concrete Curb Type "B"
  - (17) Integral Concrete Curb Type "B"
  - (19) 6" Traffic Lane Stripe
  - (21) Keyway Construction Joint
  - (A) 8" Uniform Plain Concrete Pavement
  - (B) 8" Bituminous Mixture
  - (C) Concrete Sidewalk
  - (Hatched) Pavement Removal

SERVICE STATION APPROCHES  
Junction of State Roads No. 8 & No. 49  
Scale 1" = 20'

**DETAILS**

FEDERAL ROAD DIVISION NO	STATE	PROJ. NO	FISCAL YEAR	SHEET NO	TOTAL SHEETS
4	IND.	7700	1955	14	61

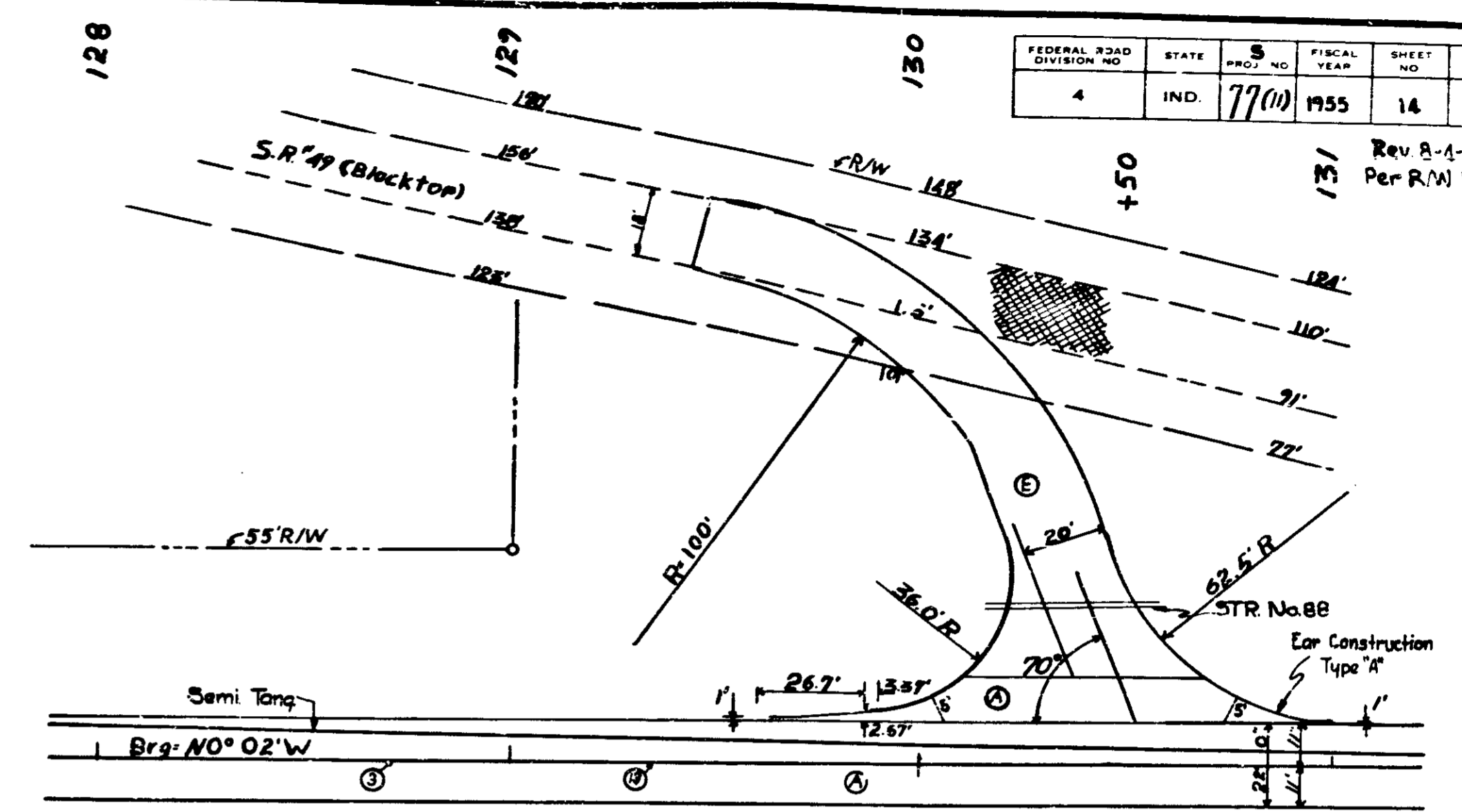
Rev 8-4-55  
Per R/W Dept.



**COMMERCIAL DRIVES**  
Sta 34+75 to Sta 37+20 Lt  
Scale 1"=30'

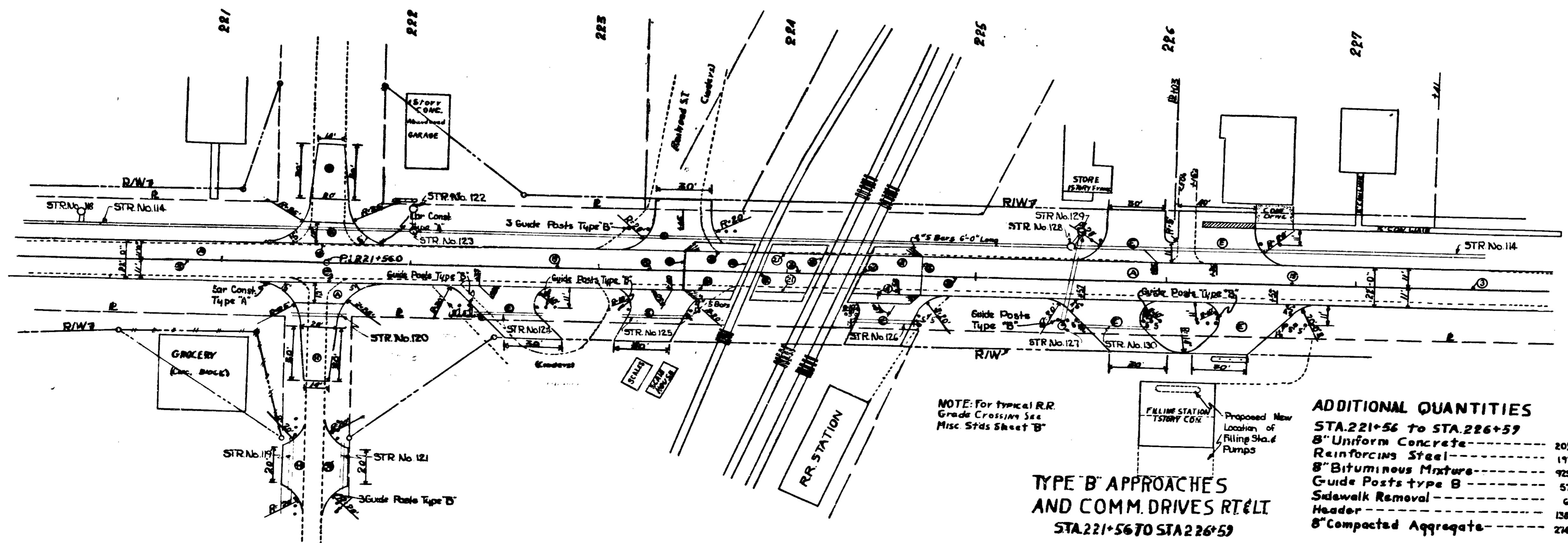
**ADDITIONAL QUANTITIES**  
STA. 34+75 to STA. 37+20 LT  
8" Bituminous Mixture --- 232 Sys  
Guide Posts Type B --- 12 Ea

- LEGEND**
- ① 8" Uniform Plain Concrete Pavement
  - ② 8" Bituminous Mixture
  - ③ 8" Compacted Aggregate
  - ④ Longitudinal Joint
  - ⑤ 1" Preformed Expansion Joint with Load Transfer
  - ⑥ Concrete Header
  - ⑦ 8" Traffic Lane Stripe
  - ⑧ Highway Construction Joint
  - ⑨ Sidewalk Removal
  - ⑩ Metal Longitudinal Joint



**APPROACH**  
Sta. 130+50 Lt  
Scale 1"=30'

**ADDITIONAL QUANTITIES**  
STA. 130+50 LT  
8" Uniform Concrete --- 114 Sys  
Reinforcing Steel --- 117 Lbs  
8" Bituminous Mixture --- 402 Sys

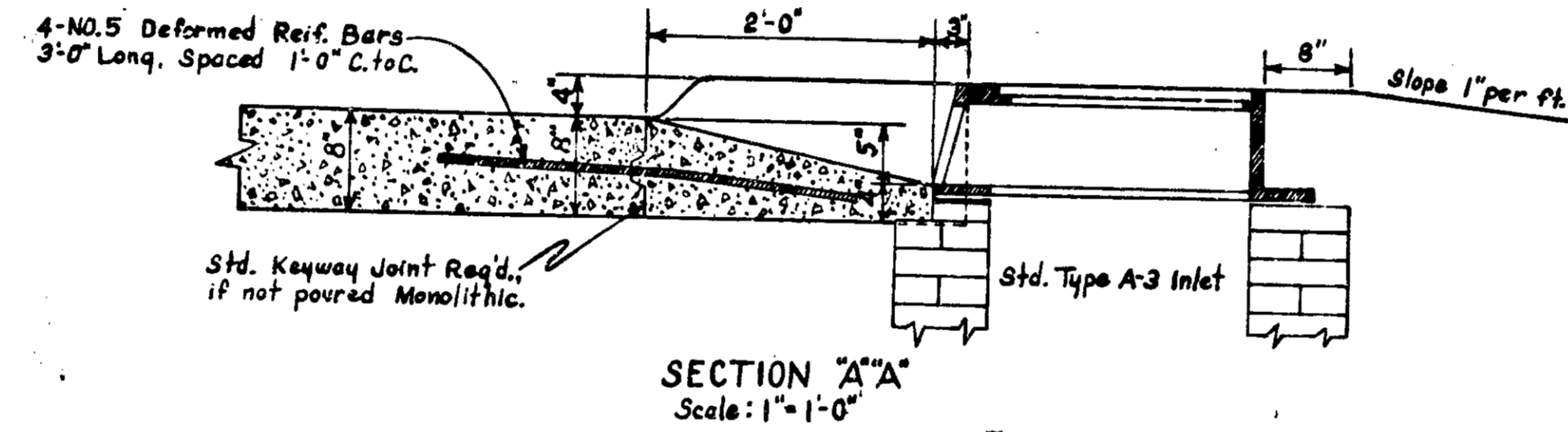
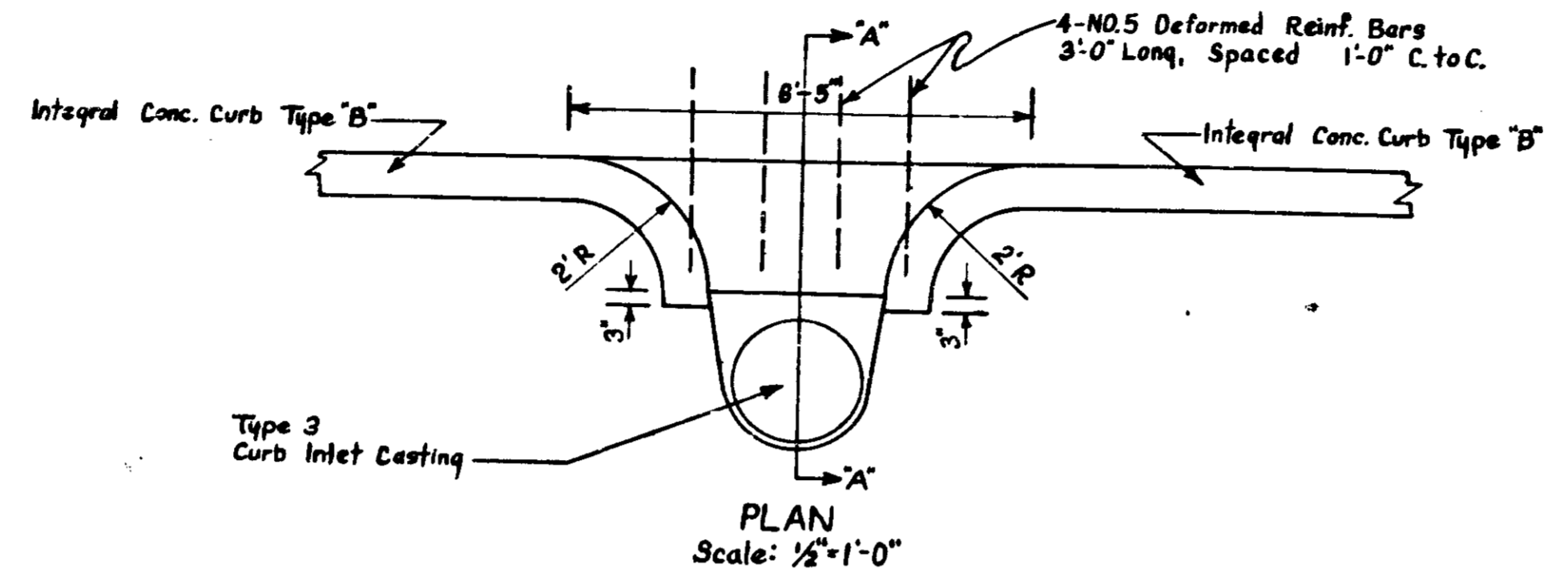


NOTE: For typical R.R. Grade Crossings See Misc. Stds Sheet 'B'

**TYPE B APPROACHES AND COMM. DRIVES RT&LT**  
STA. 221+56 TO STA. 226+59

**ADDITIONAL QUANTITIES**  
STA. 221+56 to STA. 226+59  
8" Uniform Concrete --- 203 Sys  
Reinforcing Steel --- 197 Lbs  
8" Bituminous Mixture --- 925 Sys  
Guide Posts type B --- 57 Ea  
Sidewalk Removal --- 6 Sys  
Header --- 126 Lbs  
8" Compacted Aggregate --- 214 Sys

**DETAILS**  
Scale 1"=30'



DETAIL OF ENTRANCE TO TYPE A<sub>3</sub> INLET

LOCATION	DESCRIPTION	EXCAVATION CU. YDS.		LENGTH			BENT MIXTURE SQ. YDS.	UNIFORM CONC. PER SQ. YDS.	5" COMPACTED APPROPRIATE 1/2" VETS.	REINFORCING STEEL LBS.	WIDTH IN PLACE SURF SHOULDER	SEE DETAIL ON SHEET NO.
		CUT	FILL	L'	W'	R'						
202+85 Rt.	V	0	0									
206+33 Lt.	V	0	0									
214+63 Lt.	V	0	0									
216+71 Lt.	V	0	0									
218+33 Lt.	V	0	0									
219+40 Lt.	V	0	0									
220+08 Lt.	V	0	0									
221+56 Lt.	D	10	25	25	12	15 f 25	59					
221+56 Rt.	D	10	25	25	12	15 f 25	59					
221+66+100 Rt.	V	0	0									
221+66+100 Lt.	V	0	0									
222+20 Rt.	V	0	0									
223+23 Lt.	V	0	0									
224+50 Rt.	V	0	0									
225+70 Rt.	V	0	0									
225+90 Lt.	V	0	0									
226+15 Lt.	V	0	0									
226+60 Lt.	V	0	0									
226+27 Lt.	D	5	25	65	20	15 f 25	59					
228+65 Rt.	V	0	0									

LOCATION	DESCRIPTION	EXCAVATION CU. YDS.		LENGTH			BENT MIXTURE SQ. YDS.	UNIFORM CONC. PER SQ. YDS.	5" COMPACTED APPROPRIATE 1/2" VETS.	REINFORCING STEEL LBS.	WIDTH IN PLACE SURF SHOULDER	SEE DETAIL ON SHEET NO.
		CUT	FILL	L'	W'	R'						
10+00 Rt.	SR#8	100	30	116	22							
10+00 Lt.	SR#8			184.6	22							
10+11-85 Rt.	V	10	0	30	25							
10+11-10 Rt.	V	5	0	30	20							
10+11-90 Lt.	V	4	15									
10+11 Lt.	V	4	10									
11+00 Rt.	V	4	15									
11+05 Lt.	V	4	10									
12+25 Lt.	V	4	10									
14+57 Lt.	V	0	0	29	12	15 f 25	59					
15+42 Rt.	V	0	0	29	12	15 f 25	59					
16+26 Lt.	V	0	0	29	12	15 f 25	59					
16+40 Rt.	V	0	0	29	12	15 f 25	59					
16+76 Rt.	D	15	10	65	20	15 f 25	59	105	52	4.8	12-3	
19+89 Lt.	V	0	0	29	12	15 f 25	59					
20+85 Rt.	V	0	0	29	12	15 f 25	59					
22+52 Rt.	V	0	0	29	12	15 f 25	59					
24+00 Rt.	V	0	0	29	12	15 f 25	59					
24+21 Lt.	V	0	0	29	12	15 f 25	59					
24+25 Rt.	V	0	0	29	12	15 f 25	59					
25+00 Rt.	V	0	0	29	12	15 f 25	59					
25+28 Lt.	V	0	0	29	12	15 f 25	59					
25+94 Lt.	V	0	0	29	12	15 f 25	59					
26+35 Rt.	V	0	0	29	12	15 f 25	59					
26+65 Rt.	V (conc)	0	0	29	12	15 f 25	59					
27+99 Rt.	V	0	0	29	12	15 f 25	59					
29+70 Lt.	V	0	0	29	20	15 f 25	83					
29+70 Rt.	V	0	0	29	12	15 f 25	59					
29+96 Lt.	V	0	0	29	12	15 f 25	59					
30+79 Lt.	V	0	0	29	12	15 f 25	59					
33+67 Rt.	V	0	0	29	12	15 f 25	59					
34+75 Lt.	V	0	0	29	30							
36+20 Lt.	V	0	0	29	30							
39+50 Lt.	V	0	0	29	30							
43+27 Lt.	V	0	0	29	12	15 f 25	59					
44+16 Rt.	V	0	0	29	12	15 f 25	59					
35+49 Rt.	V	0	0	29	12	15 f 25	59					
46+01 Lt.	V	0	0	29	12	15 f 25	59					
49+80 Lt.	V	0	0	29	12	15 f 25	59					
49+85 Rt.	V	0	0	29	12	15 f 25	59					
56+20 Rt.	V	0	0	29	12	15 f 25	59					
62+95 Lt.	D	20	15	101	20	37.9-38.7	149	99	1.8	14.2	12-3	
62+95 Rt.	D	20	15	101	20	37.9-38.7	149	99	1.8	14.2	12-3	
70+17 Lt.	V	0	0	29	12	15 f 25	59					
70+17 Rt.	V	0	0	29	12	15 f 25	59					
76+35 Lt.	V	0	0	29	12	15 f 25	59					
81+20 Rt.	V	0	0	29	12	15 f 25	59					
82+92 Lt.	V	0	0	29	12	15 f 25	59					
89+61.9 Lt.	D	15	100	64.73	20	576-59.8	158	100		15.9	20-3	
89+61.9 Rt.	D	15	100	64.73	20	576-59.8	158	100		15.9	20-3	
92+78 Lt.	V	0	0	29	12	15 f 25	59					
92+78 Rt.	V	0	0	29	12	15 f 25	59					
110+00 Lt.	V	0	0	29	12	15 f 25	59					
110+00 Rt.	V	0	0	29	12	15 f 25	59					
115+88.3 Lt.	D	10	60	90	20	516-39.8	158	100	7	15.9	15-3	
115+88.3 Rt.	D	10	60	90	20	516-39.8	158	100	7	15.9	15-3	
119+08 Lt.	V	0	0	29	12	15 f 25	59					
120+40 Lt.	V	0	0	29	12	15 f 25	59					
120+50 Rt.	V	0	0	29	12	15 f 25	59					
130+30 Lt.	D	25	300	175	20							
131+18 Rt.	D	0	0	0	0							
142+32 Lt.	D	10	150	100	20	36.0	147	99	1.8	14.2	12-3	
142+32 Rt.	D	10	150	100	20	36.0	147	99	1.8	14.2	12-3	
142+18-100 Lt.	V	0	0	29	12	15 f 25	59					
142+18-100 Rt.	V	0	0	29	12	15 f 25	59					
147+50-100 Rt.	V	0	0	29	12	15 f 25	59					
144+77 Rt.	V	2	0	29	12	15 f 25	59					
145+09 Lt.	V	2	0	29	12	15 f 25	59					
146+49 Lt.	V	0	0	29	12	15 f 25	59					
146+65 Lt.	V	0	0	29	12	15 f 25	59					
165+96 Lt.	V	45	0	0	0							
166+05 Lt.	V	45	0	0	0							
166+05 Rt.	V	45	0	0	0							
168+74.8 Lt.	D	20	150	101	20	38.21-37.9	149	99	1.8	14.2	12-3	
168+74.8 Rt.	D	20	150	101	20	38.21-37.9	149	99	1.8	14.2	12-3	
175+20 Rt.	V	0	0	29	12	15 f 25	59					
182+00 Lt.	V	0	0	29	12	15 f 25	59					
185+43 Lt.	V	0	0	29	12	15 f 25	59					
194+00 Lt.	V	0	0	29	12	15 f 25	59					
195+20 Rt.	V	0	0	29	24	15 f 25	97					

DETAILS





# ESTIMATE OF QUANTITIES

GRADING			PAVEMENT			MISCELLANEOUS		
ITEM	UNIT	QUANTITY	ITEM	UNIT	QUANTITY	ITEM	UNIT	QUANTITY
COMMON EXCAVATION	CYS	23098	SUBBASE, TYPE "II"	CYS	118	SODDING	SYS.	19,404
SPALL ROCK EXCAVATION	CYS		REINFORCED CONCRETE	SYS.		FURNISHING AND PLACING SEED	LBS.	2,219
SPECIAL BORROW	CYS	64,096	PLAIN CONCRETE 8" UNIFORM	SYS.	56,399	FURNISHING AND PLACING FERT.	TONS	85
OVERHAUL	CYS	3,002	H.E.S. REINFORCED CONCRETE	SYS.		FURNISHING AND PLACING	TONS	63
ADDED HAUL	UNITS		H.E.S. PLAIN CONCRETE	SYS.		MULCHING MATERIAL	TONS	114
PEAT EXCAVATION	CYS	9,319	PLAIN CONCRETE FOR PRIVATE DRIVE CROSSOVERS	SYS.	59	GUARD RAIL	LFT.	
SURCHARGE 4'	LFT		PRIVATE DRIVE	SYS.		FLEXIBLE STEEL PLATE GUARD RAIL	LFT.	170
SURCHARGE 3'	LFT		REINFORCING STEEL	LBS.	4,604	STEEL BEAM GUARD RAIL	LFT.	
MACHINE OPERATION	HRS		CONTRACTION JOINTS, TYPE	LFT.		SHOP CURVED STEEL BEAM GUARD RAIL	LFT.	
MACHINE AVAILABILITY	HRS		EXPANSION JT. 1" PREF BITUM	LFT.		WIRE ROPE GUARD RAIL	LFT.	
DYNAMITE	LBS		EXPANSION JT. 1" CORK, CORK-RUBBER OR FIBER	LFT.	80	MOVEN WIRE FABRIC GUARD RAIL	LFT.	
TEST HOLES	LFT		EXPANSION JT. 1" FREE	LFT.		FLEXIBLE STEEL PLATE OR STEEL BEAM GUARD RAIL	LFT.	
CASED DYNAMITE HOLES	LFT		EXPANSION JT. 1" PREFORMED WITH LOAD TRANSFER	LFT.	64	RESETTING FLEXIBLE STEEL PLATE GUARD RAIL	LFT.	
GRADE "B" SPECIAL BORROW TOP SOIL	CYS	9,076	3" PREFORMED BITUM EXP. JT.	LFT.		RESET STEEL BEAM GUARD RAIL	LFT.	
			CONCRETE BASE			RESET WIRE ROPE GUARD RAIL	LFT.	
			H.E.S. CONCRETE BASE			GUARD RAIL SALVAGE	LFT.	
			CONCRETE PATCHES			GUIDE POSTS TYPE "A"	EA.	13
			CLASS I CONCRETE PATCHES			GUIDE POSTS TYPE "B"	EA.	92
			CLASS II CONCRETE PATCHES			RESET GU DE POSTS	EA.	
			CLASS III CONCRETE PATCHES					
			CLASS IV CONCRETE PATCHES			BARRICADES, TYPE "A"	EA.	4
			CONCRETE WIDENING			BARRICADES, TYPE "B"	EA.	11
			FILLING CRACKS AND JOINTS			TYPICAL SIGN STANDARDS	EA.	44
			1/2" SAWED TRANSVERSE JOINT	LFT.	528			
			1/2" SAWED SPECIAL CONTRACTION JOINT, TYPE D-1 OR D-5	LFT.	550	RAILROAD (CROSSING SIGN, TYPE "A"	EA.	
			1/2" SAWED TRANSVERSE JOINT	LFT.	550	RAILROAD (CROSSING SIGN, TYPE "B"	EA.	
			1/2" FORMED TRANSVERSE JOINT	LFT.	550	ADVANCE RAILROAD WARNING SIGN	EA.	
			1/2" FORMED SPECIAL CONTRACTION JOINT, TYPE D-1 OR D-5	LFT.	572			
			AGGREGATE FOR COMPACTED			PAVED SIDE DITCH, TYPE "A"	LFT.	240
			AGGREGATE BASE	TONS	800	PAVED SIDE DITCH, TYPE "B"	LFT.	235
			AGGREGATE FOR COMPACTED			PAVED SIDE DITCH, TYPE "C"	LFT.	
			AGGREGATE SURFACE	TONS				
			WATER FOR COMPACTED			CONCRETE CURB	LFT.	8
			AGGREGATE BASE	M GALS.		CONCRETE CURB TYPE "B"	LFT.	100
			WATER FOR COMPACTED			INTEGRAL CONCRETE CURB	LFT.	235
			AGGREGATE SURFACE	M GALS.		INTEGRAL CONCRETE CURB TYPE "B"	LFT.	64
			AGGREGATE FOR SHOULDER DRAINS	TONS				
						CONCRETE CENTER CURB		
						6" HAND LAID RIP RAP	SYS.	50
						12" HAND LAID RIP RAP	SYS.	
						GROUTED RIP RAP	SYS.	
						PLACING 6" HAND LAID RIP RAP	SYS.	
						PLACING 12" HAND LAID RIP RAP	SYS.	
						PLACING GROUTED RIP RAP	SYS.	
						PRECAST CONCRETE RIP RAP	SYS.	
						RIGHT OF WAY MARKERS	EA.	128
						PLACING RIGHT OF WAY MARKERS	EA.	
						RESET RIGHT OF WAY MARKERS	EA.	
						MONUMENTS, TYPE "C"	EA.	1
						MONUMENTS, TYPE "D"	EA.	4
						MONUMENTS, RE-ESTABLISHED	EA.	
						CASTINGS ADJUSTED TO GRADE		
						MONUMENTS	EA.	
						BEVCH MARK POSTS	EA.	2
						RESETTING BENCH MARK POSTS	EA.	

# STRUCTURE DATA

STRUCTURE NUMBER	LOCATION	DESCRIPTION	SKEW	LENGTH	HEIGHT	WINGS	FLOW LINE		CONCRETE CLASS	SPECIAL BORROW	REINFORCING STEEL	REMARKS
							UP STREAM ELEV.	DOWN STREAM ELEV.				
67	51+40 RL	Sld. Catch Basin Type C-5										Connect to Str. No. 66. Remove Str. in Place
68	56+70 RL	Sld. Manhole Type B-4		24'								Connect to Pipe in Place
69	56+90 RL	Sld. Catch Basin Type C-5										Remove Catch Basin in Place. Connect to Str. No. 68
70	58+90 LL	Sld. Inlet Type C-5			18'							
71	61+60 RL	R.C.V.C.C.I. or Conc. Pipe			63'		646.0	645.9		7		Connect to Str. No. 69
72	62+70 RL	Sld. Manhole Type B-4										Connect to Pipe in Place
73	63+25 RL	Sld. Catch Basin Type C-5			15'							Remove Str. & Pipes in Place. Connect to Str. No. 71
74	63+25 LL	Pipe			60'							Connect to Str. No. 72
75	69+59 RL	R.C.V.C.C.I. or Conc. Pipe			60'		687.3	687.2				Remove Pipe in Place. Connect to Str. No. 73
76	70+13 RL	C.M. Pipe			6'							No Headwalls Req'd.
77	70+13 LL	C.M. Pipe			24'							Remove Pipe in Place.
79	76+35 LL	C.M. Pipe			20'							Remove Pipe in Place.
79	76+47 RL	V.C. or C.C. Sewer Pipe			9'							Remove Pipe in Place
80	81+20 RL	C.M. Pipe			20'							Remove Pipe in Place. Connect to Pipe in Place
81	82+92 LL	C.M. Pipe			20'							Remove Pipe in Place
82	89+62 LL	C.M. Pipe			52'							
83	89+62 RL	C.M. Pipe			24'							Remove Pipe in Place
83A	92+78 LL	C.M. Pipe			20'							
83B	92+78 RL	C.M. Pipe			20'							
84	100+00	R.C.V.C.C.I. or Conc. Pipe			54'		694.2	694.2		7		
85	115+50	R.C.V.C.C.I. or Conc. Pipe			63'							
86	116+30	R.C.V.C.C.I. or Conc. Pipe			63'							Construct Inlet & Outlet Ditch
87	127+07	R.C. or C.I. Pipe			68'		692.0	691.8		47		Construct Inlet & Outlet Ditch
88	130+50 LL	Pipe			52'							
89	133+18 RL	C.M. Pipe			20'							
90	142+18 RL	C.M. Pipe			20'							
91	142+18 LL	C.M. Pipe			20'							
92	142+32 LL	Pipe			52'							
93	142+32 RL	Pipe			52'							
94	142+50 RL	C.M. Pipe			20'							
95	144+66 LL	C.M. Pipe			6'							No Headwalls Req'd.
96	146+55 LL	C.M. Pipe			40'							
97	181+00	R.C.V.C.C.I. or Conc. Pipe			51'		695.6	695.3		8		
98	186+00 LL	Deformed C.M. Pipe			40'							
99	186+05 RL	C.M. Pipe			24'							
100	186+75 LL	Deformed C.M. Pipe			52'							
101	188+79 RL	Pipe			52'							
102	174+20 LL	Str. in Place. Seal Inlet End.										
103	174+20 RL	Str. in Place. Seal Inlet End.										
104	174+90 RL	Str. in Place. Seal Inlet End.										
105	174+90 LL	Str. in Place. Seal Inlet End.										
106	175+20 RL	Special Bit. Coated C.M. Pipe.			38'							
107	182+00 RL	Deformed C.M. Pipe			20'							
108	185+34 LL	Pipe			20'							
109	197+00 LL	Pipe			20'							
110	199+20 RL	Deformed C.M. Pipe			20'							
111	202+55 RL	Deformed C.M. Pipe			20'							
112	206+33 LL	Pipe			20'							
113	214+63 LL	Pipe			24'							
114	218+00 LL	Sewer Pipe			1107'							
		Steel Pipe			64'							Construct Headwall on Outlet. Remove Pipe in Place
115	216+90 LL	2-12" on 15" Pipe Tees										
		Sld. 15" Pipe Catch Basin					706.2					
116	218+50 LL	Sewer Pipe			6'							Connect to Str. No. 114
117	218+50 LL	Sld. Manhole Type B-4					706.0					Connect to Str. No. 114
		Sld. 15" Pipe Catch Basin										
118	220+25 LL	Sewer Pipe					706.2					Connect to Str. No. 116
		Sld. 15" Pipe Catch Basin										
119	221+37 RL	Sewer Pipe			6'							Connect to Str. No. 114
120	221+56 RL	C.M. Pipe			42'							
121	221+77 RL	C.M. Pipe			44'							
122	222+00 LL	C.M. Pipe			42'							
		Sld. Catch Basin Type C-5					708.0					
123	222+00 LL	Sewer Pipe			6'							Connect to Str. No. 123
124	222+55 RL	Sld. Manhole Type B-4										Connect to Str. No. 114
125	223+25 RL	Pipe			38'							
126	224+50 RL	Pipe			38'							
127	225+45 RL	C.M. Pipe			38'							
		Sld. Inlet Type C-5					709.0					
128	225+50 LL	R.C.V.C.C.I. or Conc. Pipe			57'							Connect to Str. No. 128
129	225+55 LL	Sld. Manhole Type B-4										Connect to Str. No. 114
		Sld. Catch Basin Type C-5										
130	225+70 RL	Sewer Pipe			6'							Connect to Str. No. 128
131	228+12 LL	C.M. Pipe			38'							
132	228+12 LL	Sld. Manhole Type B-4										Connect to Str. No. 114
		Sld. Catch Basin Type C-5					708.5					
133	228+50 LL	Sewer Pipe			9'							Connect to Str. No. 131. Remove Inlet in Place
		Sld. Inlet Type C-5										
134	228+55 RL	Sewer Pipe			42'							
135	228+90 RL	C.M. Pipe			24'							Connect to Str. No. 132
		Sld. Inlet Type C-5										