

INDEX

SHEET NO.	1	TITLE SHEET.
SHEET NO.	2	STANDARD CROSS SECTIONS. F-11-1R, Adpt. July, 1953.
SHEET NO.	3-6	TYPICAL CROSS SECTIONS.
SHEET NO.	7	STD. PAVEMENT JOINTS. Sheet "A" Rev. 10-6-53.
SHEET NO.	8-25	PLAN AND PROFILE.
SHEET NO.	26-28	BRIDGE AND CULVERT DATA—ESTIMATE OF QUANTITIES.
SHEET NO.	29-31	MISCELLANEOUS STANDARDS. Sheet "A" Rev. 3-11-53; Sheet "B" Rev. 11-1-52; Sheet "C" Rev. 3-29-47.
SHEET NO.	32-34	MISCELLANEOUS STANDARDS. Sheet "D" Rev. 2-1-54; Sheet "E" Rev. 2-9-53; Sheet "H" Rev. 1-6-54.
SHEET NO.	35-37	MISCELLANEOUS STANDARDS. Sheet "I" Rev. 3-11-53; Sheet "J" Rev. 3-11-53; Sheet "K" Rev. 9-1-51.
SHEET NO.	38	MISCELLANEOUS STANDARDS. Sheet "N" Adpt. Feb. 1949.
SHEET NO.		STD. STRUCTURE CONNECTIONS FOR EXTENSIONS.
SHEET NO.		STD. REINF. CONC. BOX CULVERT.
SHEET NO.		STD. REINF. CONC. CULV.—SLAB TOP TYPE WITHOUT FILL (10'-0" TO 20'-0" SPAN)
SHEET NO.		STD. REINF. CONC. CULV.—SLAB TOP TYPE UNDER FILL 1'-0" TO 5'-0" (10'-0" TO 20'-0" SPAN)
SHEET NO.		STD. REINF. CONC. CULV.—SLAB TOP TYPE WITHOUT FILL (10'-0" TO 20'-0" SPAN) 15° SKEW.
SHEET NO.		STD. REINF. CONC. CULV.—SLAB TOP TYPE UNDER FILL 1'-0" TO 5'-0" (10'-0" TO 20'-0" SPAN) 15° SKEW.
SHEET NO.		STD. REINF. CONC. CULV.—SLAB TOP TYPE WITHOUT FILL (10'-0" TO 20'-0" SPAN) 30° SKEW.
SHEET NO.		STD. REINF. CONC. CULV.—SLAB TOP TYPE UNDER FILL 1'-0" TO 5'-0" (10'-0" TO 20'-0" SPAN) 30° SKEW.
SHEET NO.		STD. REINF. CONC. CULV.—SLAB TOP TYPE WITHOUT FILL (10'-0" TO 20'-0" SPAN) 45° SKEW.
SHEET NO.	39	STD. GUARD RAIL. Rev. C-30-49.
SHEET NO.	40	STEEL BEAM GUARD RAIL. Rev. 7-27-49.
SHEET NO.		ALTERNATE STD. CONC. SLAB RAILROAD GRADE CROSSING.
SHEET NO.		
SHEET NO.		
SHEET NO.	41	DATA FOR SUPER-ELEVATING AND WIDENING OF CURVES. Adpt. Sept. 1932.
SHEET NO.	42-43	STD. DETOUR SIGNS. Sheet 1, Rev. 2-11-54; Sheet 2 Rev. 5-1-51.
SHEET NO.	44-65	CROSS SECTIONS.

FEDERAL ROAD DIVISION NO.	STATE	PROJECT NO.	FISCAL YEAR	SHEET NO.	TOTAL SHEETS
4	IND.	265(17)	1954	1	65

Returned from Microfilm 1-18-66
Code #1227

1227

STATE OF INDIANA
STATE HIGHWAY DEPARTMENT

PLAN AND PROFILE OF PROPOSED
STATE HIGHWAY
U.I. PROJECT NO. 265 (17)
TRI-STATE HIGHWAY R/W

BEGINNING AT A POINT APPROXIMATELY 959.5 FT. WEST OF THE EAST LINE OF SEC. 17, T-36-N; R-9-W, AND RUNNING IN AN EASTERLY DIRECTION TO A POINT 790 FT. WEST OF THE EAST LINE OF SEC. 16, T-36-N, R-9-W, ALL IN LAKE CO.

GROSS LENGTH:- 1.041 MI.

NET LENGTH:- 0.999 MI.

SCALES:-

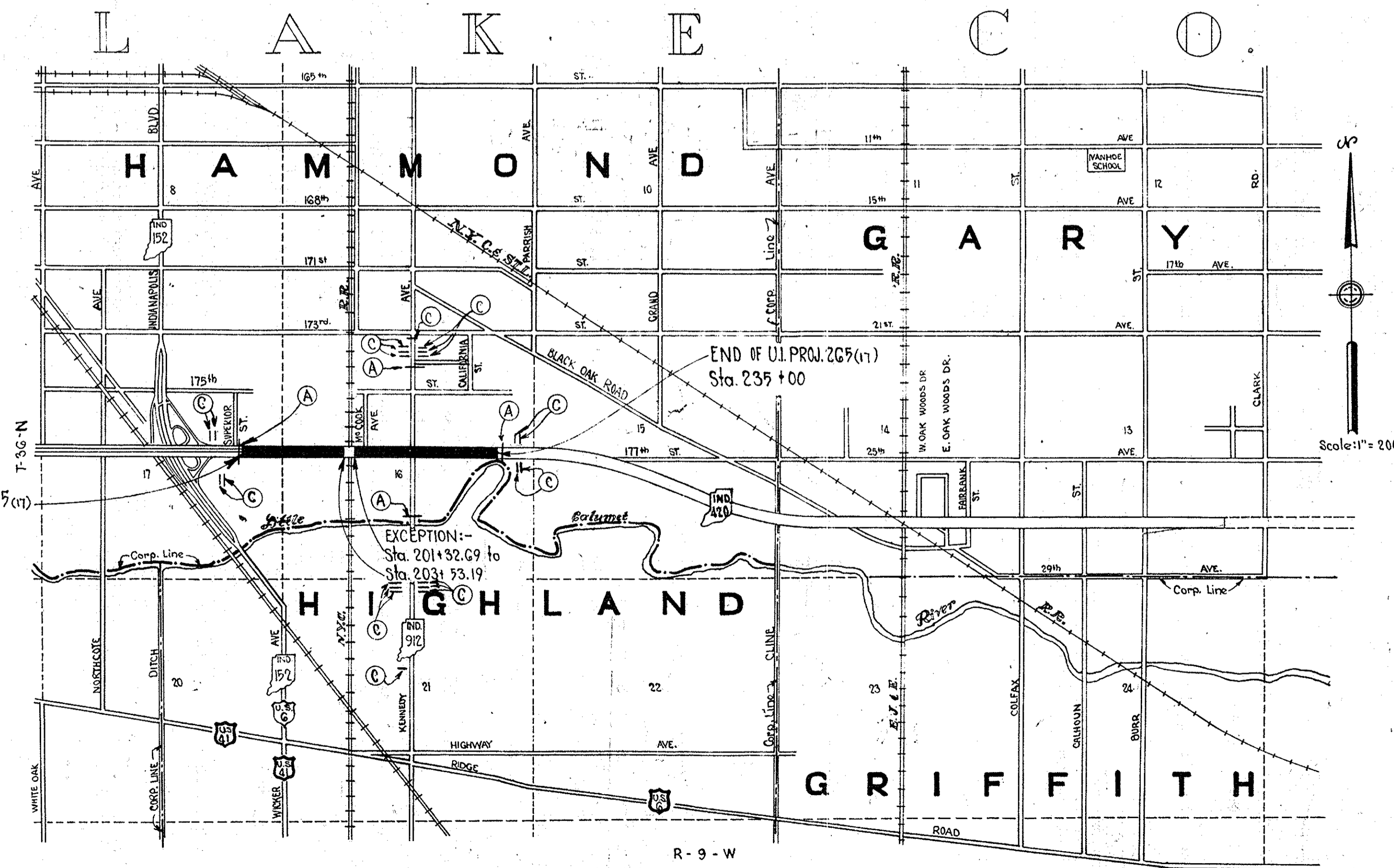
PLAN LONG:- 1"=100' & 1"=50'
TRANS:- 1"=100' & 1"=50'

PROFILE HORIZ:- 1"=100' & 1"=50'
VERT:- 1"=10'

MAX. GRADE 3.00%

- DETOUR LEGEND
- (A) Std. Barricades, Type "A"
 - (C) Typical Sign Standards

BEGINNING OF U.I. PROJECT 265(17)
STA. 180+00.0 =
END U.I. PROJ. 265(17)



REVISIONS		
DATE	SHEET NO.	REVISED
5-13-54	9, 10, 11, 12, 13, 14 & 17	R/W

APPROVED AND ADOPTED 7-7-54
BY STATE HIGHWAY DEPARTMENT OF INDIANA

Neil B. Edwain
CHAIRMAN - STATE HIGHWAY DEPARTMENT OF INDIANA

APPROVED

C. S. Vogelzang
CHIEF ENGINEER - STATE HIGHWAY DEPARTMENT OF INDIANA

STATE HIGHWAY COMMISSION OF INDIANA.
STANDARD SPECIFICATIONS DATED 1952
TO BE USED WITH THESE PLANS.

RECOMMENDED FOR APPROVAL 7-6-54

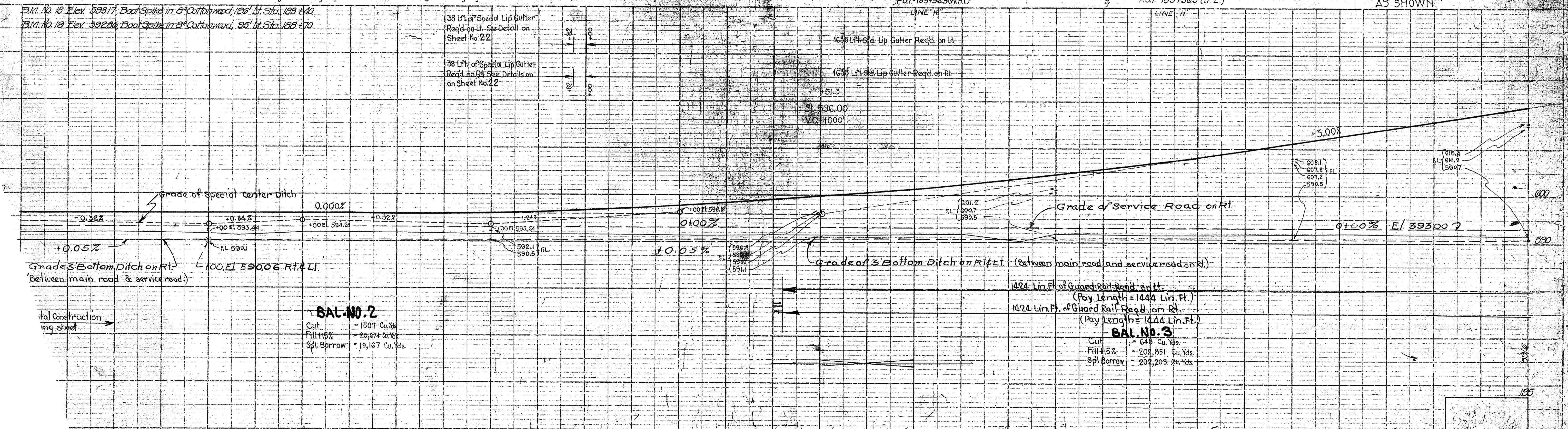
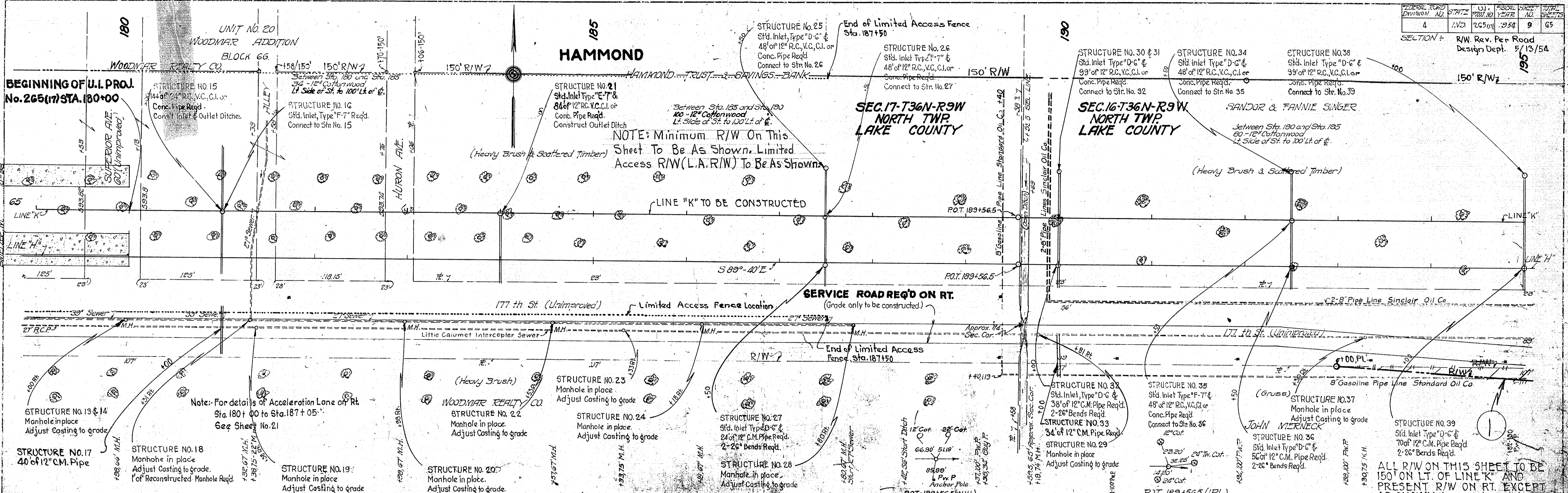
W. H. Behrens
ENGINEER OF ROAD DESIGN, STATE HIGHWAY DEPARTMENT OF INDIANA

DEPARTMENT OF COMMERCE
BUREAU OF PUBLIC ROADS

APPROVED:-

DISTRICT ENGINEER _____ DATE _____

FEDERAL ROAD DIVISION NO.	STATE	U.I. PROJ. NO.	FISCAL YEAR	SHEET NO.	TOTAL SHEETS
4	IND	265(17)	1954	9	65



PLAN
 SHEET NO. 9
 REVISIONS
 1. 5/13/54
 2. 5/13/54
 3. 5/13/54
 4. 5/13/54
 5. 5/13/54
 6. 5/13/54
 7. 5/13/54
 8. 5/13/54
 9. 5/13/54
 10. 5/13/54
 11. 5/13/54
 12. 5/13/54
 13. 5/13/54
 14. 5/13/54
 15. 5/13/54
 16. 5/13/54
 17. 5/13/54
 18. 5/13/54
 19. 5/13/54
 20. 5/13/54
 21. 5/13/54
 22. 5/13/54
 23. 5/13/54
 24. 5/13/54
 25. 5/13/54
 26. 5/13/54
 27. 5/13/54
 28. 5/13/54
 29. 5/13/54
 30. 5/13/54
 31. 5/13/54
 32. 5/13/54
 33. 5/13/54
 34. 5/13/54
 35. 5/13/54
 36. 5/13/54
 37. 5/13/54
 38. 5/13/54
 39. 5/13/54
 40. 5/13/54
 41. 5/13/54
 42. 5/13/54
 43. 5/13/54
 44. 5/13/54
 45. 5/13/54
 46. 5/13/54
 47. 5/13/54
 48. 5/13/54
 49. 5/13/54
 50. 5/13/54
 51. 5/13/54
 52. 5/13/54
 53. 5/13/54
 54. 5/13/54
 55. 5/13/54
 56. 5/13/54
 57. 5/13/54
 58. 5/13/54
 59. 5/13/54
 60. 5/13/54
 61. 5/13/54
 62. 5/13/54
 63. 5/13/54
 64. 5/13/54
 65. 5/13/54
 66. 5/13/54
 67. 5/13/54
 68. 5/13/54
 69. 5/13/54
 70. 5/13/54
 71. 5/13/54
 72. 5/13/54
 73. 5/13/54
 74. 5/13/54
 75. 5/13/54
 76. 5/13/54
 77. 5/13/54
 78. 5/13/54
 79. 5/13/54
 80. 5/13/54
 81. 5/13/54
 82. 5/13/54
 83. 5/13/54
 84. 5/13/54
 85. 5/13/54
 86. 5/13/54
 87. 5/13/54
 88. 5/13/54
 89. 5/13/54
 90. 5/13/54
 91. 5/13/54
 92. 5/13/54
 93. 5/13/54
 94. 5/13/54
 95. 5/13/54
 96. 5/13/54
 97. 5/13/54
 98. 5/13/54
 99. 5/13/54
 100. 5/13/54

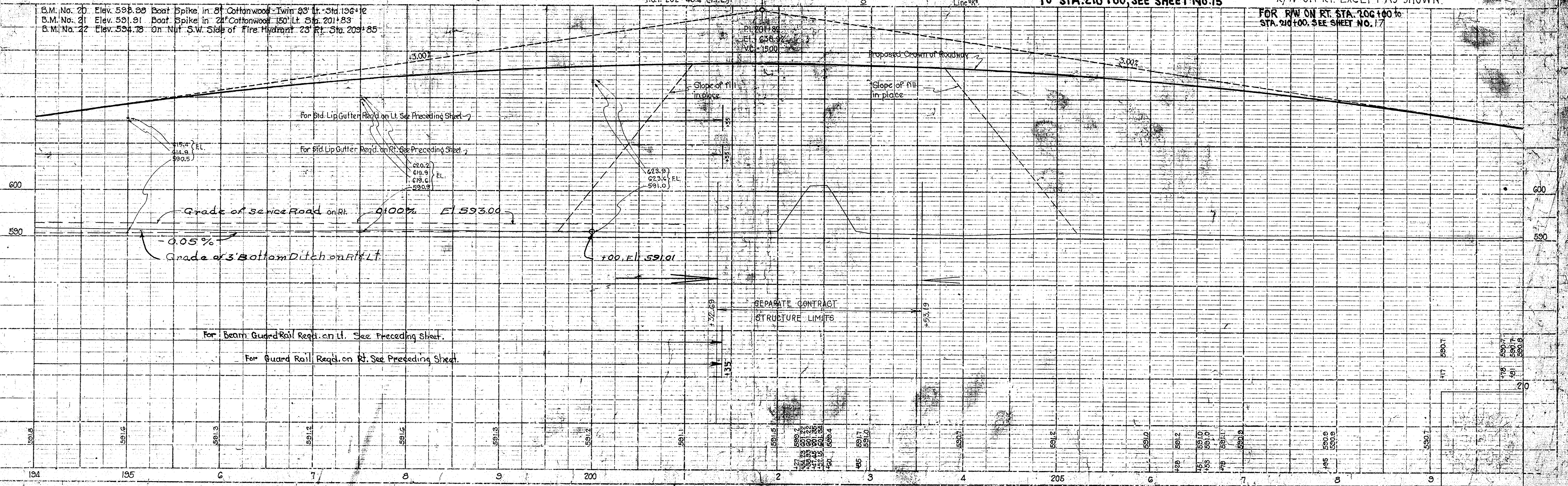
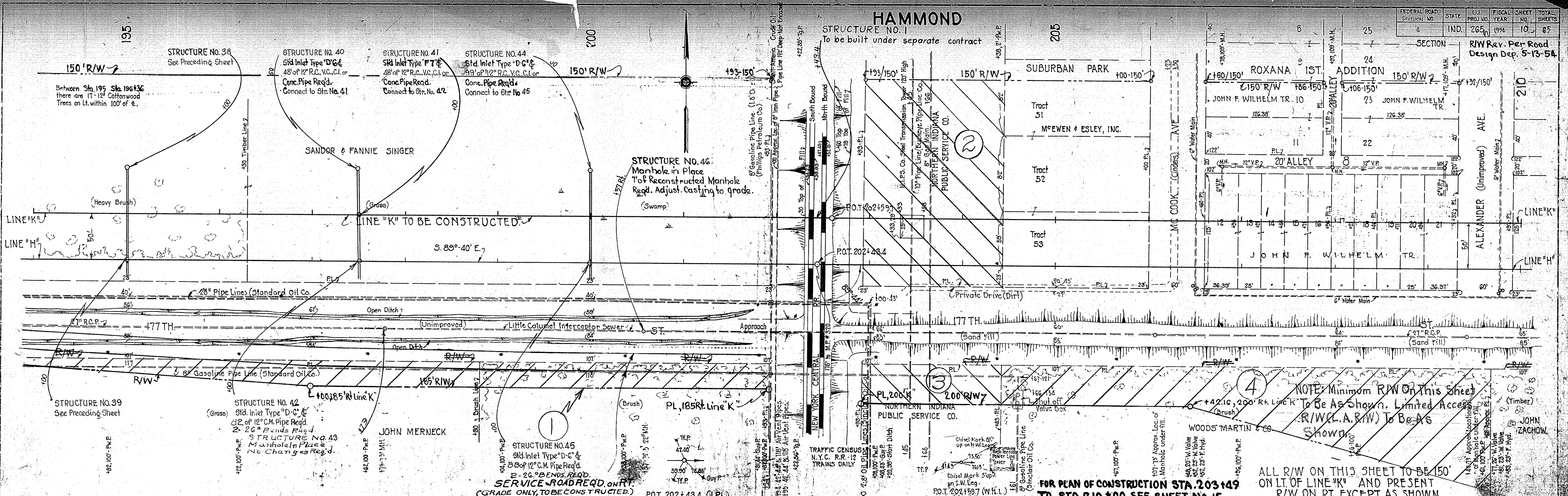
ALL R/W ON THIS SHEET TO BE 150' ON LT. OF LINE 'K' AND PRESENT R/W ON RT. EXCEPT AS SHOWN.

FEDERAL ROAD DIVISION NO.	STATE	U.I. PROJ. NO.	FISCAL YEAR	SHEET NO.	TOTAL SHEETS
4	IND.	265	1974	10	67

R/W Rev. Per Road Design Dep. 5-13-54

DATE	BY	REVISION
6-30-54	D.A. GUNDEL	1. PREPARED
7-31-54	E.F. WILKINSON	2. CHECKED
8-1-54	J.W. ZANBER	3. INKED

DATE	BY	REVISION
6-30-54	D.A. GUNDEL	1. PREPARED
7-31-54	E.F. WILKINSON	2. CHECKED
8-1-54	J.W. ZANBER	3. INKED



FOR PLAN OF CONSTRUCTION STA. 203+49 TO STA. 210+00, SEE SHEET NO. 15

ALL R/W ON THIS SHEET TO BE 150' ON LT. OF LINE 'K' AND PRESENT R/W ON RT. EXCEPT AS SHOWN.

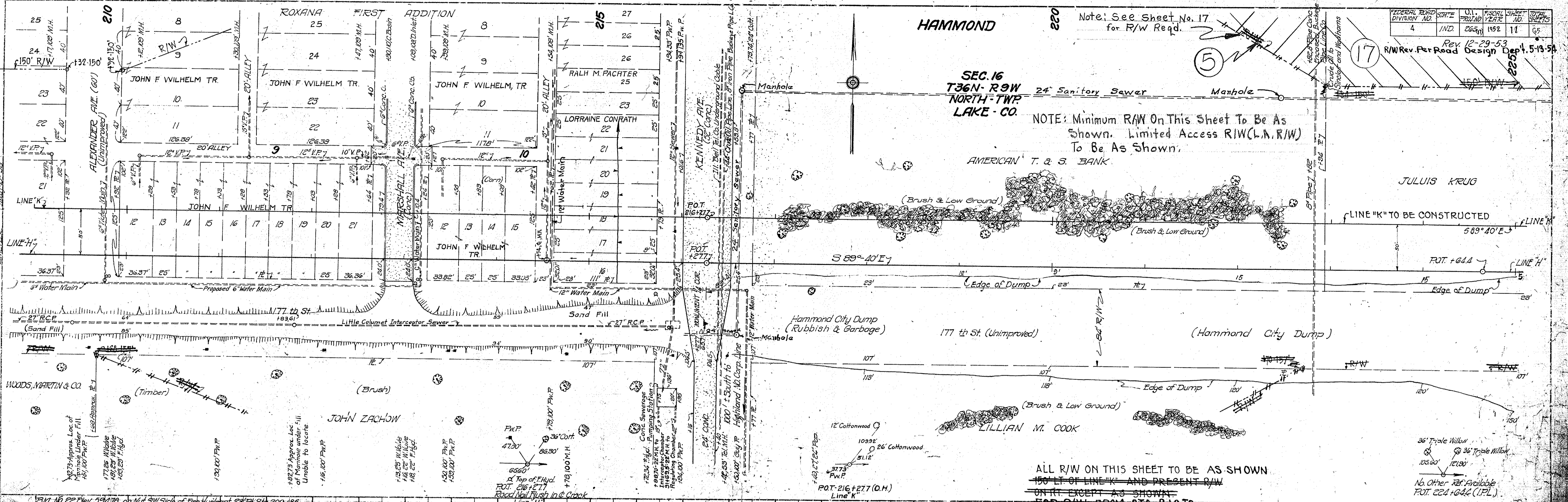
FOR R/W ON RT. STA. 206+00 to STA. 210+00, SEE SHEET NO. 17

DATE: 12-29-53
 DRAWN BY: W.S. WILKINSON
 CHECKED BY: J. H. WILKINSON

DATE: 12-29-53
 DRAWN BY: W.S. WILKINSON
 CHECKED BY: J. H. WILKINSON

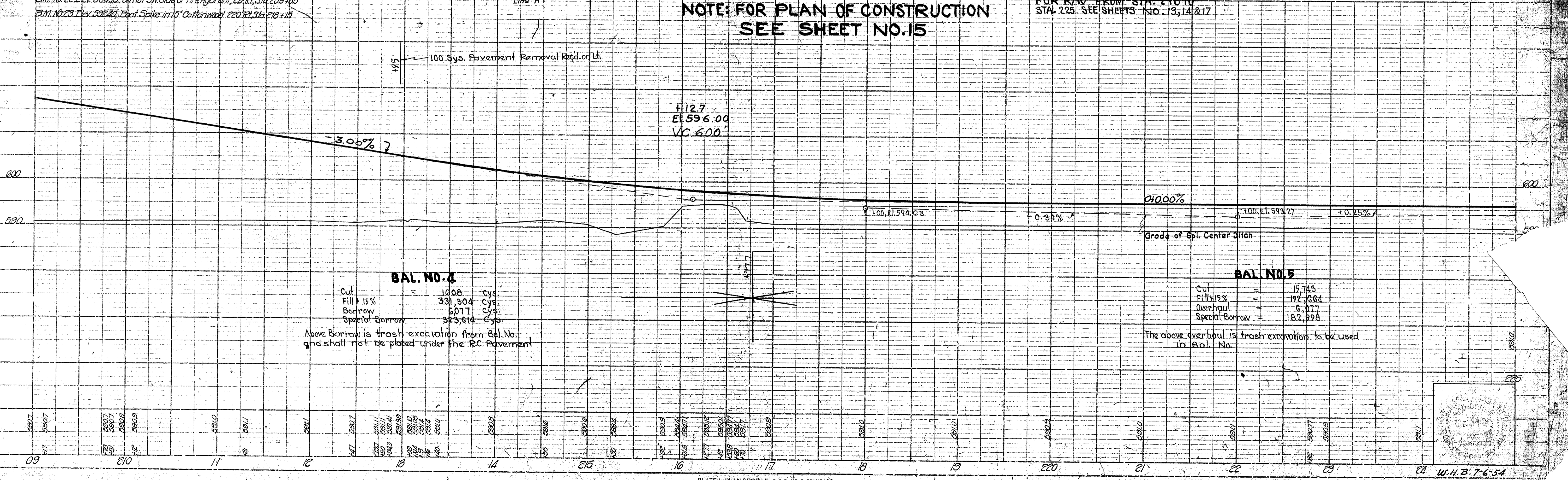
FEDERAL ROAD DIVISION NO.	STATE	PROJECT NO.	SHEET NO.	TOTAL SHEETS
4	IND.	265	17	65

Rev. 12-29-53
 R/W Rev. For Road Design Dept. 5-13-54



NOTE: FOR PLAN OF CONSTRUCTION SEE SHEET NO. 15

ALL R/W ON THIS SHEET TO BE AS SHOWN
 150' LT. OF LINE "K" AND PRESENT R/W ON IT EXCEPT AS SHOWN FOR R/W FROM STA. 216 TO STA. 225. SEE SHEETS NO. 13, 14 & 17



BAL. NO. 4

Cut	=	1008	Cys.
Fill 15%	=	331,304	Cys.
Borrow	=	6,077	Cys.
Special Borrow	=	323,614	Cys.

Above Borrow is trash excavation from Bal. No. 4 and shall not be placed under the R.C. Pavement

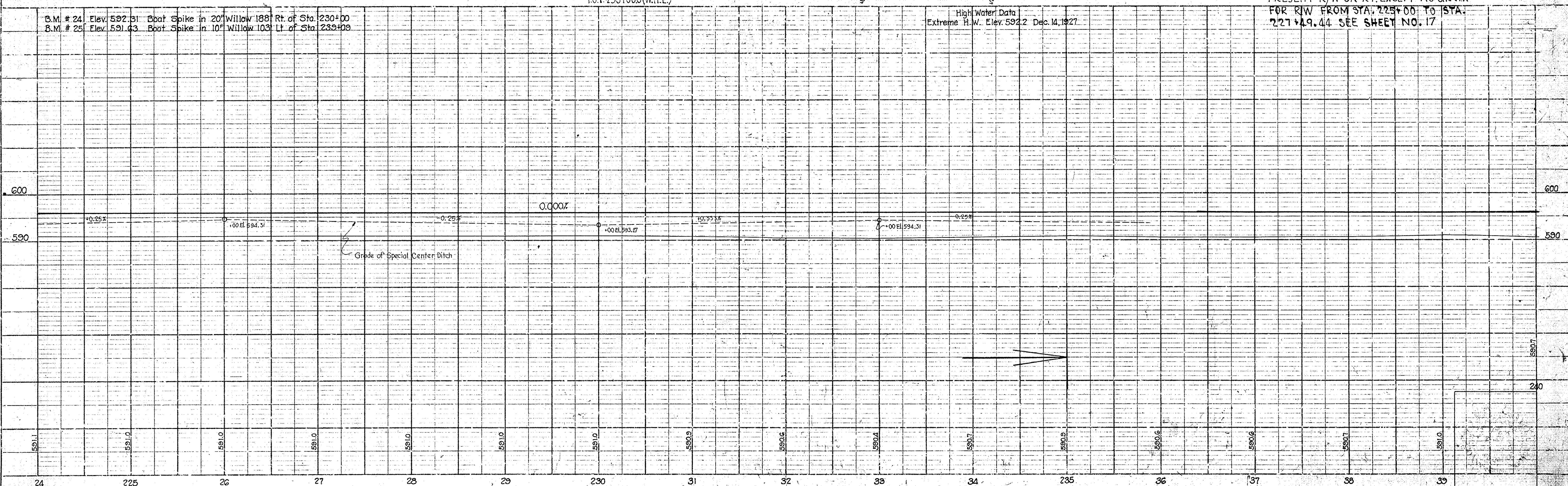
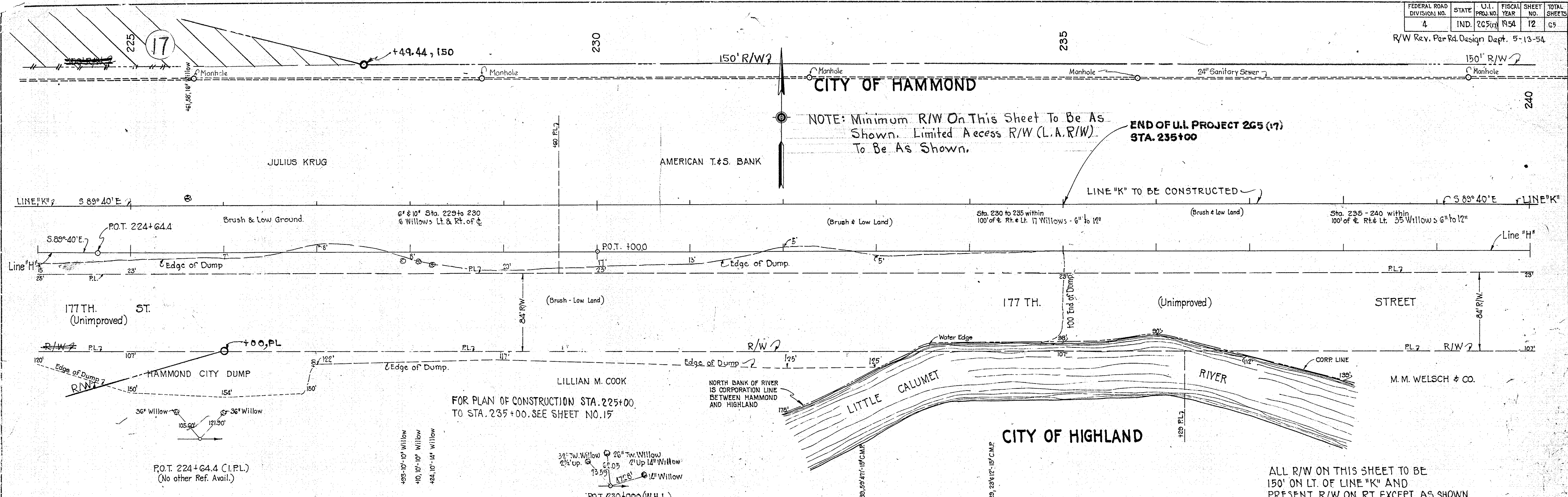
BAL. NO. 5

Cut	=	15,743	Cys.
Fill 15%	=	192,664	Cys.
Overhaul	=	6,077	Cys.
Special Borrow	=	182,998	Cys.

The above overhaul is trash excavation to be used in Bal. No. 5

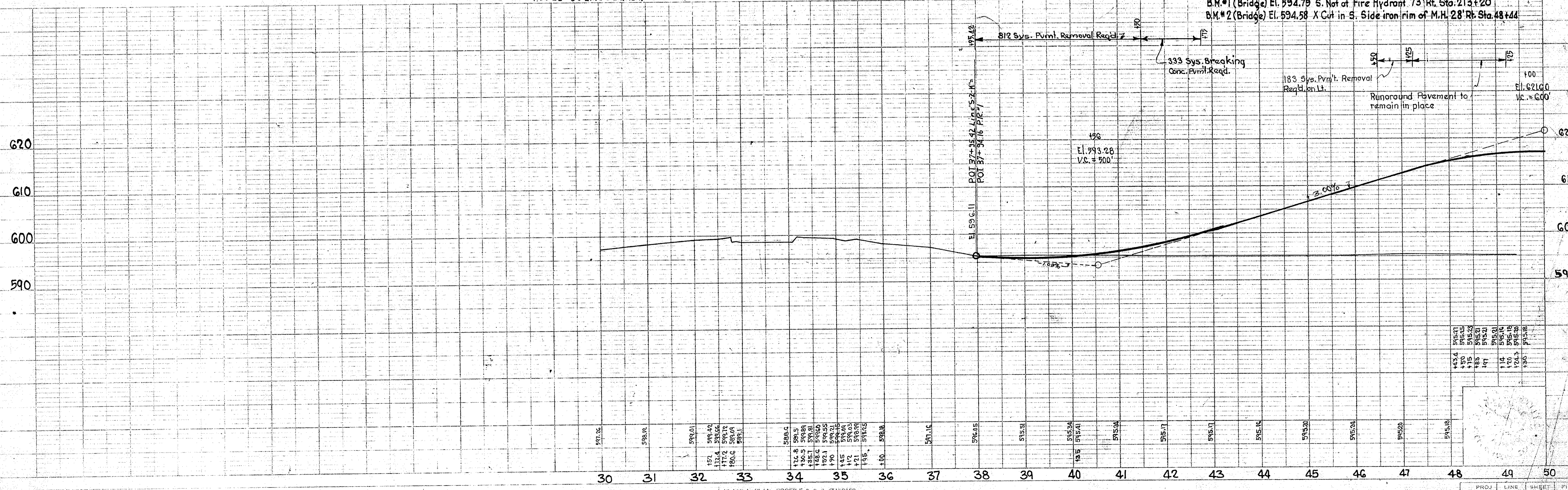
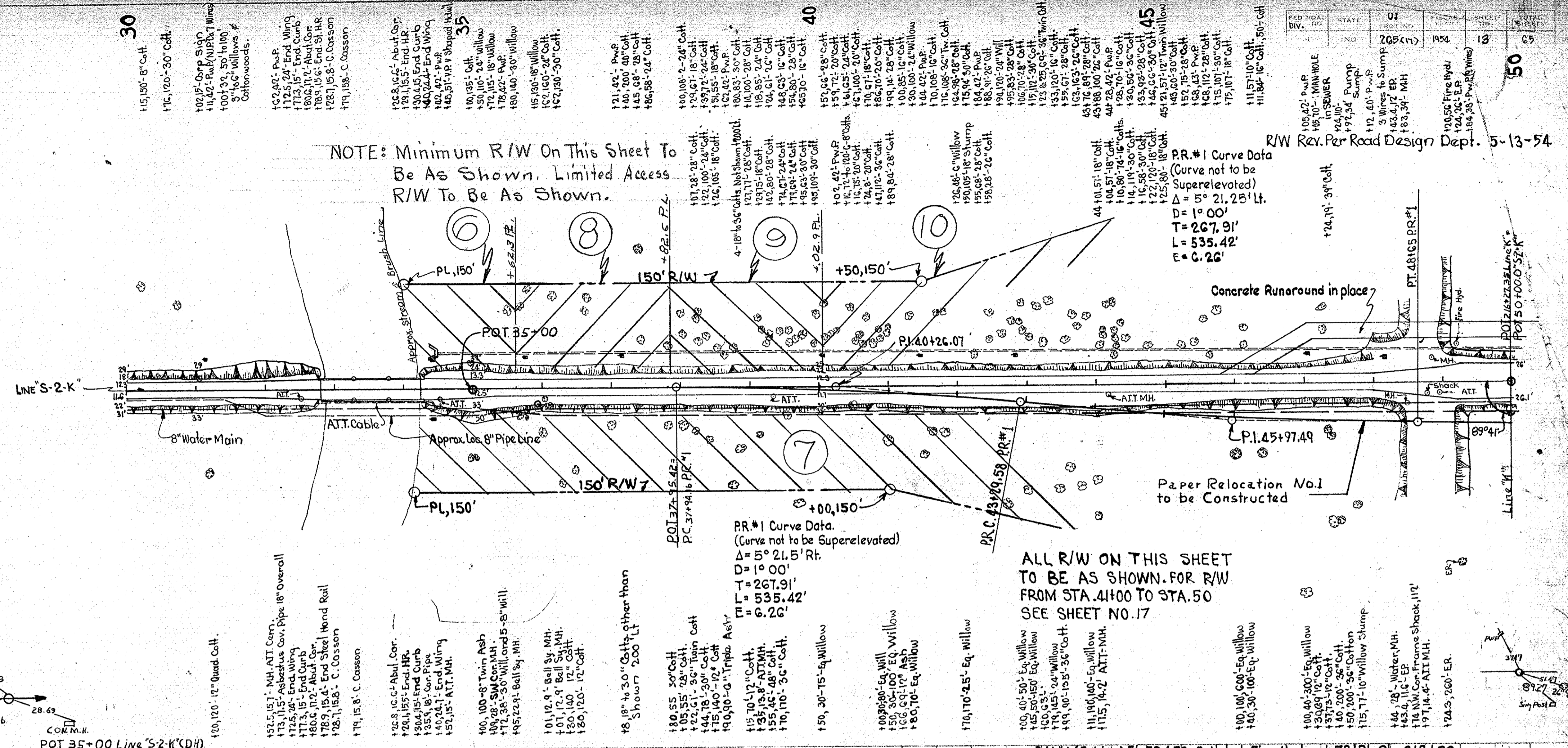
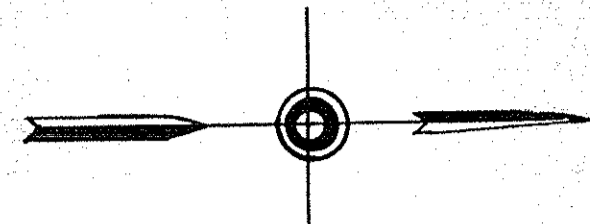
DATE: 6-30-54
 SURVEYED BY: D.A. GUNDER, J.R. MEVIN, J.S. WILSON, R.W. ZAISER
 CHECKED BY: J.S. WILSON, R.W. ZAISER
 PLAN NO. 48161

DATE: 6-30-54
 SURVEYED BY: D.A. GUNDER, J.R. MEVIN, J.S. WILSON, R.W. ZAISER
 CHECKED BY: J.S. WILSON, R.W. ZAISER
 PROFILE NO. 48161

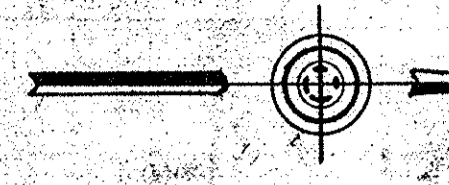
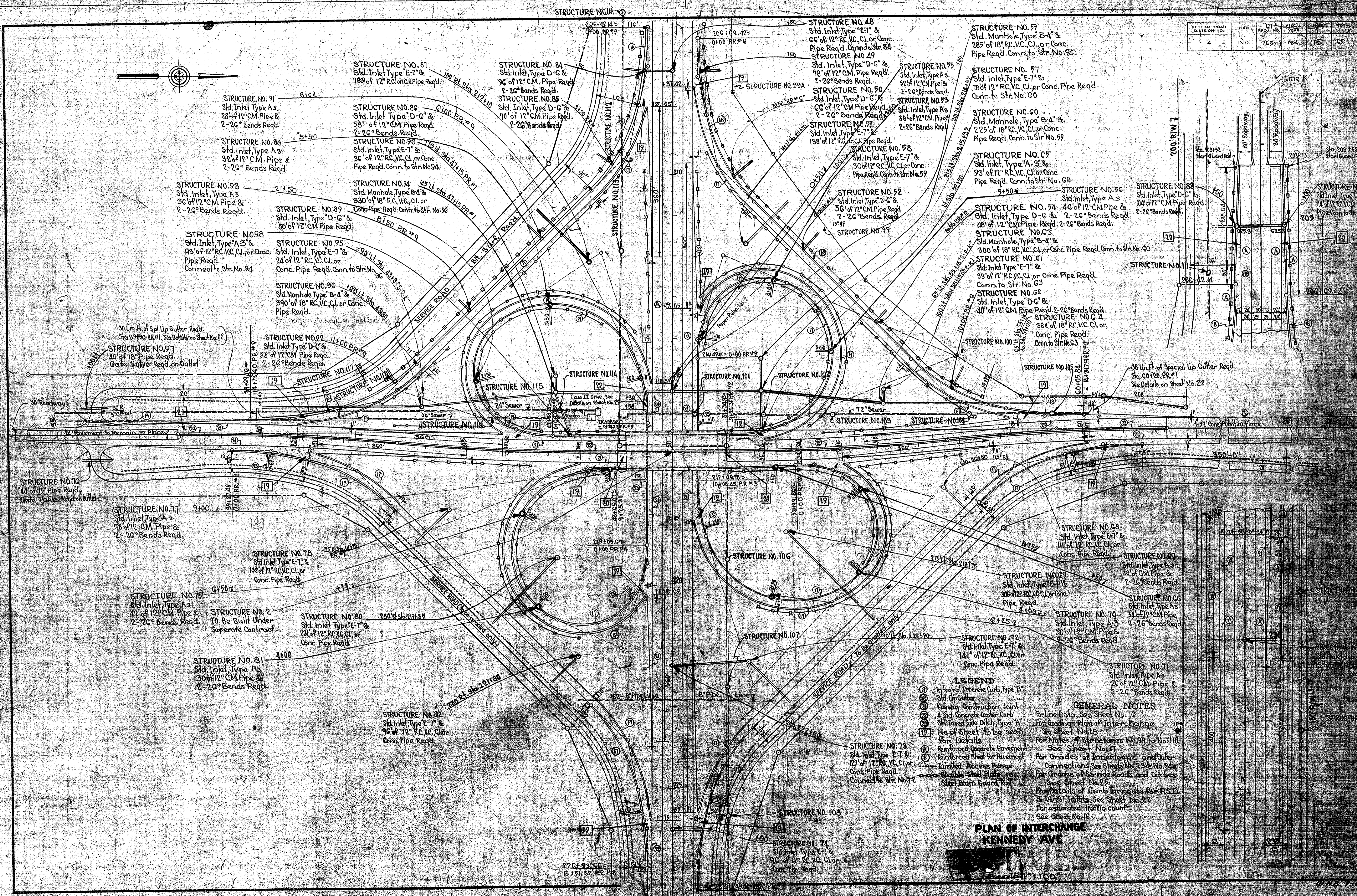


PLAN
 NOTE BOOK ALIGNMENT CHECKED
 No. 88191
 DATE 11/22/54
 INKED BY J.P.E.N.

PROFILE
 NOTE BOOK PROFILE CHECKED
 No. 88191
 DATE 11/22/54
 INKED BY J.P.E.N.



FEDERAL ROAD DIVISION NO.	STATE	PROJ. NO.	PHYSICAL YEAR	SHEET NO.	TOTAL SHEETS
4	IND.	2650	1954	15	67



LEGEND

- ① Inverted Concrete Curb, Type B
- ② Std. Lip Gutter
- ③ Kerfway Construction Joint
- ④ Std. Concrete Center Curb
- ⑤ Std. Paved Side Ditch, Type A
- ⑥ No. of Sheet to be seen for Details
- ⑦ Reinforced Concrete Pavement
- ⑧ Reinforced Steel for Pavement
- ⑨ Limited Access Fence
- ⑩ Channel Steel Plate
- ⑪ Steel Barrn Guard Rail

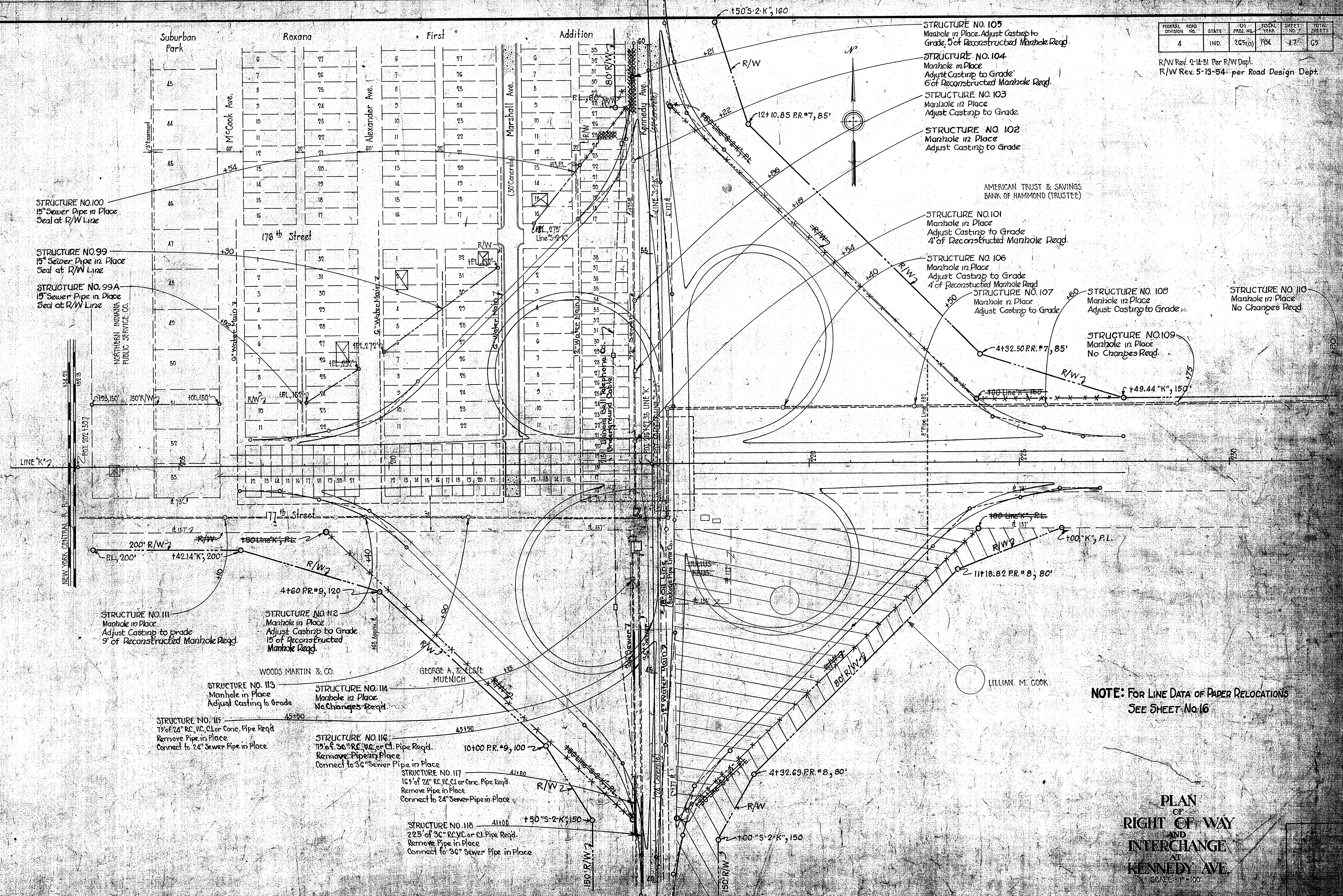
GENERAL NOTES

- For line Data, See Sheet No. 16
- For Grading Plan of Interchange, See Sheet No. 18
- For Notes of Structures No. 99 to No. 118, See Sheet No. 17
- For Grades of Interchanges and Other Connections, See Sheets No. 23 & No. 24
- For Grades of Service Roads and Ditches, See Sheet No. 25
- For Details of Curb Joints for R.S.D. & A.S. Inlets, See Sheet No. 22
- For estimated traffic count, See Sheet No. 16

**PLAN OF INTERCHANGE
KENNEDY AVE**

FEDERAL ROAD DIVISION NO.	STATE	PROJECT NO.	FISCAL YEAR	SHEET NO.	TOTAL SHEETS
4	IND.	2C5(m)	1954	17	65

R/W Rev. 2-14-51 Per R/W Dept.
R/W Rev. 5-13-54 per Road Design Dept.

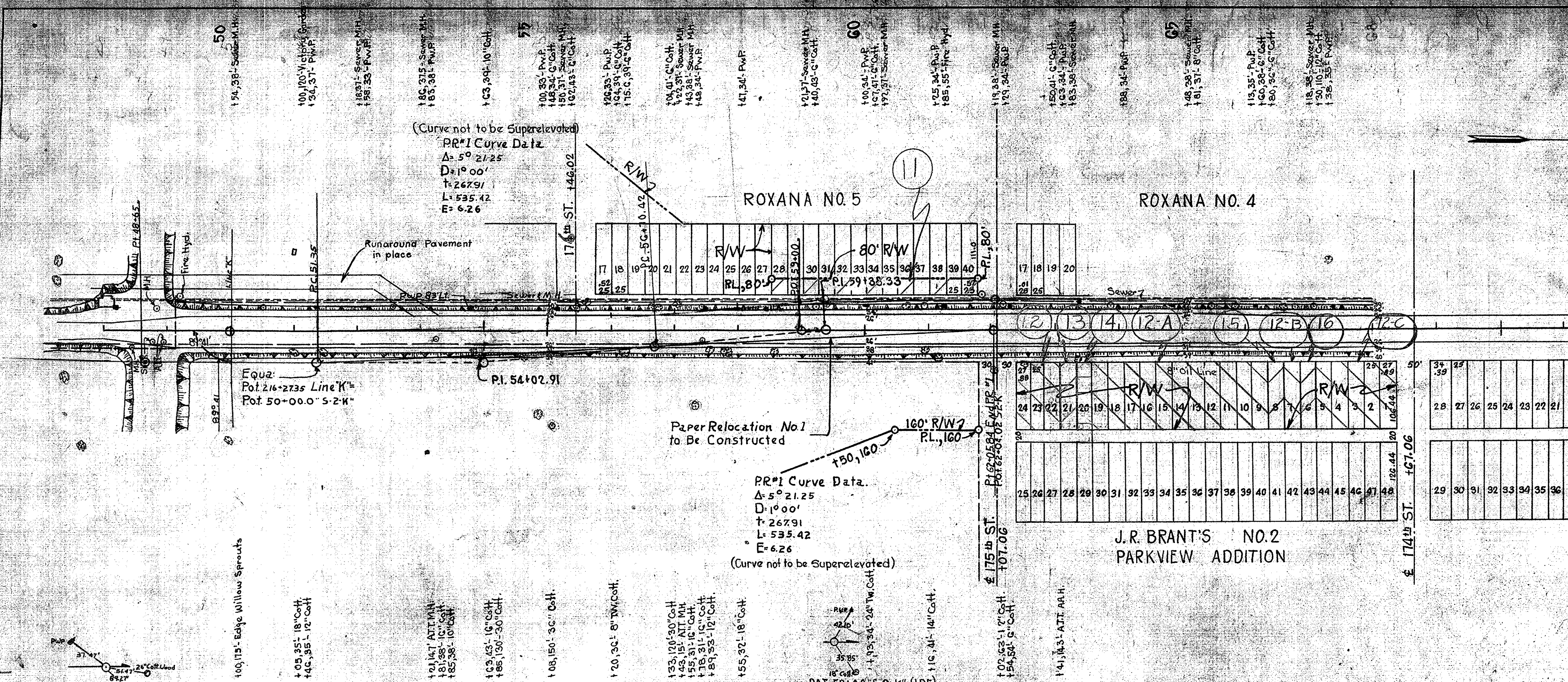


NOTE: FOR LINE DATA OF PAPER RELOCATIONS
SEE SHEET NO. 16

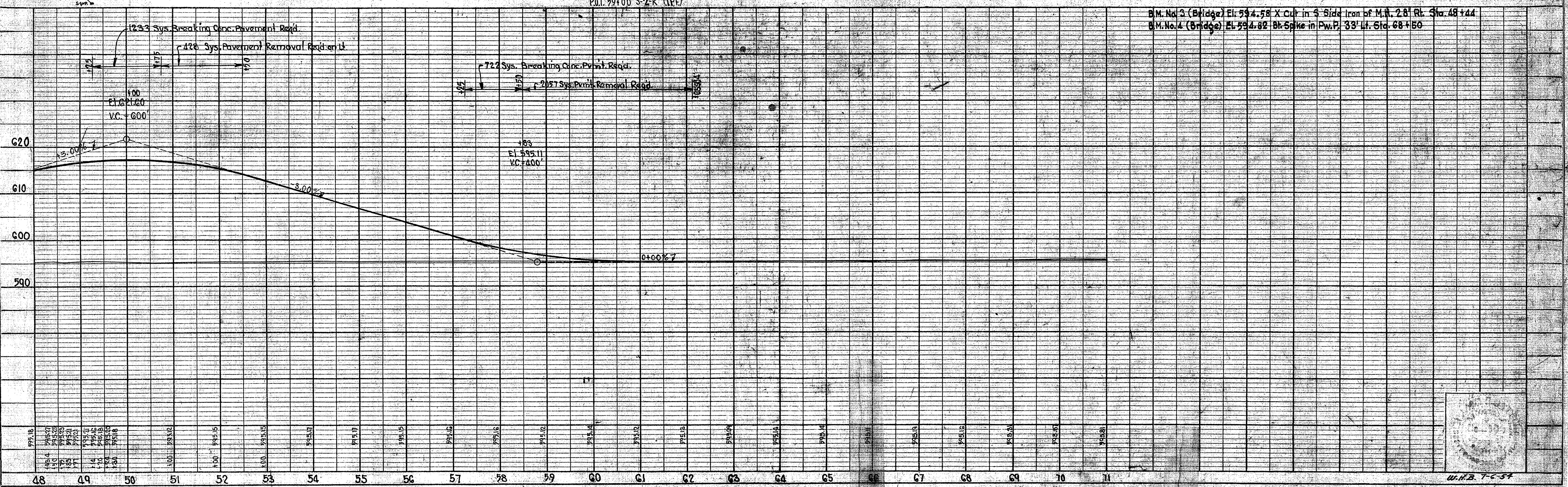
PLAN
OF
RIGHT OF WAY
AND
INTERCHANGE
AT
KENNEDY AVE.
SCALE: 1" = 100'

PLANNED BY: C. P. STOWART, D. R. C.
NOTED BY: D. R. C.
DATE: 10-23-53

PROFILE
CHECKED BY: W. H. B. 7-5-54
DATE: 7-5-54

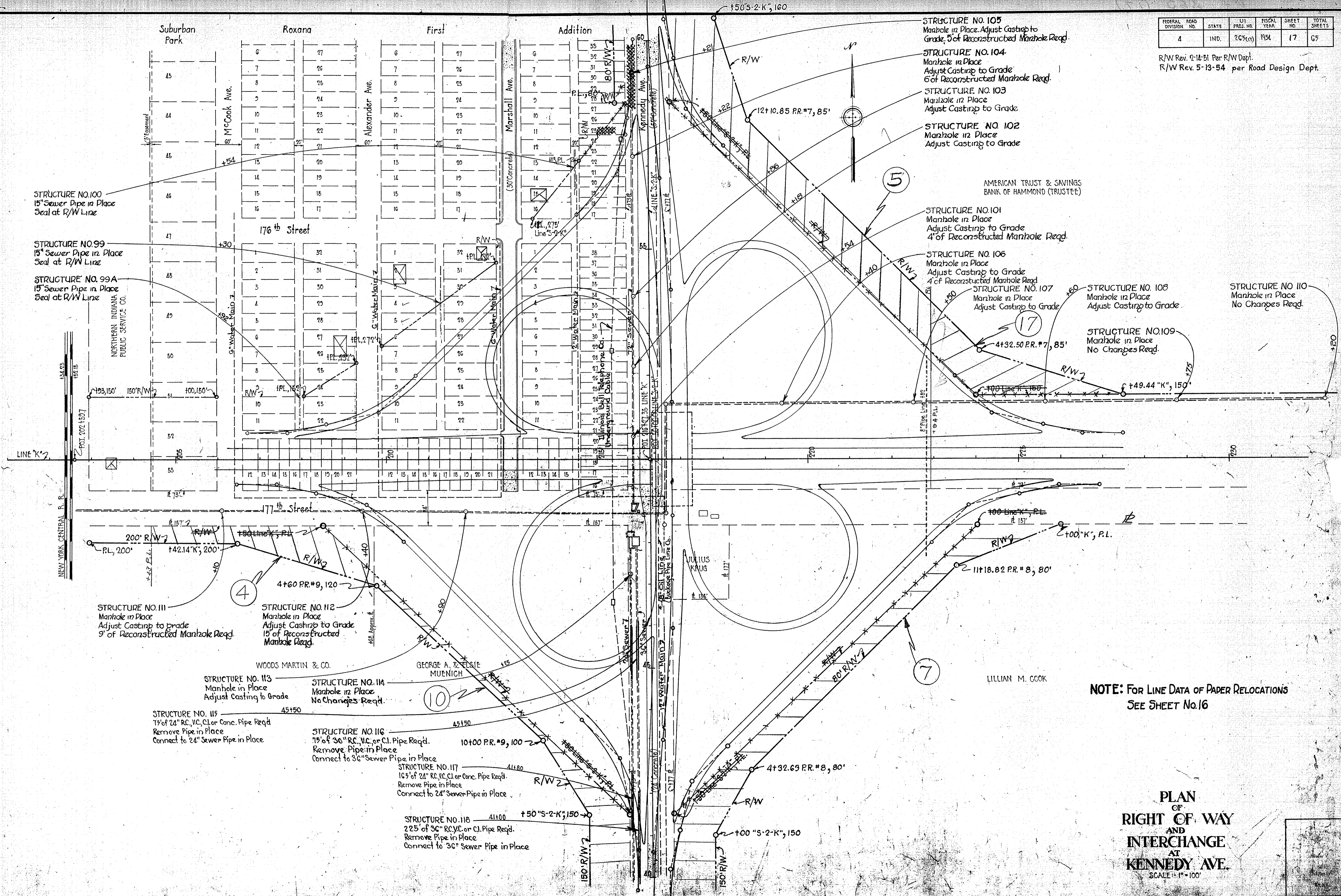


NOTE: Minimum R/W On This Sheet To Be As Shown. Limited Access R/W (L.A.R/W) To Be As Shown.



FEDERAL ROAD DIVISION NO.	STATE	UI PROJ. NO.	FISCAL YEAR	SHEET NO.	TOTAL SHEETS
4	IND.	205(11)	1954	17	65

R/W Rev. 2-14-51 Per R/W Dept.
R/W Rev. 5-13-54 per Road Design Dept.



NOTE: FOR LINE DATA OF PAPER RELOCATIONS
SEE SHEET No.16

PLAN
OF
RIGHT OF WAY
AND
INTERCHANGE
AT
KENNEDY AVE.
SCALE: 1" = 100'

CERTIFICATE OF RIGHT OF WAY COSTS FEDERAL AID PROJECT UI 265 (17)PROGRAM APPROVED May 6, 1954

Tract or Parcel	Grantor	Between Survey Stations	Area	Nature of Title	Date of Taking	Land	Total amount paid for Damages and Property Adjustments	Total
1	Eastgate Homes Inc.	193 + 00 to 201 + 93	0.446	Easement	6-22-55	2,000.00	500.00	2,500.00
2	Northern Ind. Pub. Serv. Co.	202 + 93 to 204 + 43	0.78	Easement	6-30-53	2,072.00		2,072.00
3	Northern Ind. Pub. Serv. Co.	202 + 93 to 204 + 43	0.15	Easement	12-29-54	300.00		300.00
4	Helen C. Gardner	204 + 43 to 4+ 60FF	0.50	Easement	10-15-54	Free		Free
5	Victor Kirsch	5+65.5 PR to 60 + 50(SK.2)	3.02	Easement	10-26-54	6,500.00		6,500.00
6	Charles Storbeck	33 + 42.16 to 35 + 62.3	0.60	Easement	10-26-54	900.00		900.00
7	Lillian M. Cook	34 + 20 to 226 + 00.	3.41	Easement	11-22-54	15,000.00		15,000.00
8	Gustov Zachau	35 + 62.3 to 37 + 82.6	0.61	Easement	11-26-54	900.00		900.00
9	Bertha Anderson	37 + 82.6 to 40 + 02.9	0.61	Easement	11-22-54	900.00		900.00
10	George H. Zachau	40 + 02.9 to 40 + 00	0.75	Easement	12-9-54	1,125.00		1,125.00
11	Sidney & Louis Pachter	58 + 55 to 61 + 85	0.22	Easement	12-20-54	14,850.00		14,850.00
*12-12A 12-B-12C	Jordon R. Brant Inc.	62 + 37.06 to 68 + 46.06	1.289	As paid by Court Award		40,470.00	Agreed Judgment	40,470.00
13	Sylvia R. Hamm	63 + 14.06 to 63 + 39.06	2661 sq. ft.	Easement	10-26-54	1,375.00		1,375.00
14	Laura Barril	63 + 39.06 to 63 + 64.06	2661 sq. ft.	Easement	12-18-54	1,600.00		1,600.00
*15	H.C. Gotshall	66 + 70 to 66 + 95	2661 sq. ft. As paid by Court Award	Easement	10-26-54	1,500.00		1,500.00
16	Alfred E. Land	66 + 90.06 to 67 + 15.06	2661 sq. ft.	Easement	10-26-54	1,250.00		1,250.00
17	Mercantile National Bank	227 + 49.44 to 5 + 65	80 sq. ft.	Easement	4-4-55	1,200.00		1,200.00
						<u>\$91,942.00</u>	<u>\$500.00</u>	<u>\$92,442.00</u>

* Denotes parcel were settled by condemnation and cost of each item was not stipulated.

SUMMARY

Item	Amount
Land Damage and Property Adj. and Credits	<u>\$ 92,442.00</u>
Incidental Costs	<u>600.00</u>
Total Permanent E/W Cost	<u>\$ 93,042.00</u>

I certify the above data are correct: that the Right of Way necessary for the Project has been acquired in the name of State Highway Dept. of Indiana in accordance with procedures as submitted to the Administrator, and that the prices paid are based on written justification in the State files.

Date: _____

Chas. M. Dawson
Chas. M. Dawson, Director
Right-of-Way Dept.

CERTIFICATE OF RIGHT-OF-WAY COSTS FEDERAL AID PROJECT UI 265 (17)PROGRAM APPROVED May 6, 1954

Tract or Parcel	Grantor	Between Survey Stations	Area	Nature of title	Date of Taking	Land	Total amount paid for	
							Damages and Property Adjustments	Total
1	Eastgate Homes Inc.	193+00 201 + 93	0.446	Easement	6-22-55	2000.00	500.00	2500.00
2	Northern Ind Pub. Serv. Co.	202+93 204+43	0.78	Easement	6-30-53	2072.00		2072.00
3	Northern Ind. Pub. Serv. Co.	202+93 204+43	0.15	Easement	12-29-54	300.00		300.00
4	Helen C. Gardner	204+43 4+60 PR	0.50	Easement	10-15-54	Free		Free
5	Victor Kirsch	5+65.5 Pr 60+50(SK.2)	3.02	Easement	10-26-54	6500.00		6500.00
6	Charles Storbeck	33+42.16 35+62.3	0.60	Easement	10-26-54	900.00		900.00
7	Lillian M. Cook	34+20 226+00	3.41	Easement	11-22-54	15000.00		15000.00
8	Gustov Zachau	35+62.3 37+82.6	0.61	Easement	11-26-54	900.00		900.00
9	Bertha Anderson	37+82.6 40+02.9	0.61	Easement	11-22-54	900.00		900.00
10	George H. Zachau	40+02.9 10+00	0.75	Easement	12-9-54	1125.00		1125.00
11	Sidney & Louis Pachter	58+55 61+85	0.22	Easement	12-20-54	14850.00		14850.00
12-12A 12B-12C	Jordon R. Brant Inc.	62+37.06 68+46.06	1.289	As paid by Court Award		40470.00	Agreed Judgment	40470.00
13	Sylvia R. Hamm	63+11.06 63+39.06	2661 sq. ft.	Easement	10-26-54	1375.00		1375.00
14	Laura Earl	63+39.06 63+64.06	2661 sq. ft.	Easement	12-18-54	1600.00		1600.00
15	H. C. Gotshall	66+70 66+95	2661 sq. ft. As paid by Court Award			1500.00		1500.00
16	Alfred E. Land	66+90.06 67+15.06	2661 sq. ft.	Easement	10-26-54	1250.00		1250.00
17	Mercantile National Bank	227+49.44 5+65	80 sq. ft.	Easement	4-4-55	1200.00		1200.00
			Total			\$91942.00	500.00	\$92442.00
			Total			\$91942.00	500.00	92442.00
				Summary			Amount	
	Incidental Cost			Land Damage and Property Adj. and Credits				92942.00
	Appraiser's Fee	525.00		Incidental Cost				525.00
	Total	525.00		Total Permanent R/W Cost				93467.00
				Temporary Right of Way				None

I certify the above data to be correct and that the right-of-way necessary for the project has been acquired in the name of State Highway Dept. of Indiana.

Date: June 20, 1956

W. L. Tevbaugh
W. L. Tevbaugh, Director
Right-of-way dept.

Program Approved May 6th, 1954

Tract or Parcel	Grantor	Between survey stations	Area	Nature of Title	Date of Taking	Land	Total amount paid for Damages and Property Adjustments	Total
1	Eastgate Homes Inc.	193 + 00 to 201 + 93	0.146 A	Easement	6-22-55	2,000.00		2,000.00
3	Northern Ind. Pub. Serv. Co.	202 + 93 to 204 + 13	0.15 A	Easement	12-29-54	300.00		300.00
4	Helen C. Gardner	204 + 13 to 4 + 60 PR	0.50 A	Easement	10-15-54	Free		Free
5	Victor Kirsch	5 + 65.5 PR to 60 + 50 (SK.2)	3.02 A	Easement	10-26-54	6,500.00		6,500.00
6	Charles Storbeck	33 + 42.16 to 35 + 62.3	0.60 A	Easement	10-26-54	900.00		900.00
7	Lillian M. Cook	34 + 20 to 226 + 00	3.41 A	Easement	11-22-54	15,000.00		15,000.00
8	Gustav Zachau	35 + 62.3 to 37 + 82.6	0.61 A	Easement	11-26-54	900.00		900.00
9	Bertha Anderson	37 + 82.6 to 40 + 02.9	0.61 A	Easement	11-22-54	900.00		900.00
10	George H. Zachau	40 + 02.9 to 10 + 00	0.75 A	Easement	12-9-54	1,125.00		1,125.00
11	Sidney & Louis Pachter	58 + 55 to 61 + 85	0.22 A	Easement	12-20-54	14,850.00		14,850.00
* 12 - 12A 12-B - 12-C	Jordan R. Brant Inc.	62 + 37.06 to 68 + 46.06	1.289 A	As paid by Court Award		40,470.00	Agreed Judgment	40,470.00
13	Sylvia R. Hamm	63 + 14.06 to 63 + 39.06	2661 SQ.FT.	Easement	10-26-54	1,375.00		1,375.00
14	Leura Baril	63 + 39.06 to 63 + 64.06	2661 SQ.FT.	Easement	12-18-54	1,600.00		1,600.00
* 15	H.C. Gotshall	66 + 70 to 66 + 95	2661 SQ.FT.	As paid by Court Award		1,500.00		1,500.00
16	Alfred R. Land	66 + 90.06 to 67 + 15.06	2661 SQ.FT.	Easement	10-26-54	1,250.00		1,250.00
17	Mercantile National Bank	227 + 49.44 to 5 + 65	.80	Easement	4-4-55	1,200.00		1,200.00
						89,870.00		89,870.00

* Denotes parcel were settled by condemnation and cost of each item way not stipulated.

Incidental Costs

Appraiser's Fee

\$600.00

TOTAL

\$600.00

SUMMARY

Item

Amount

Land Damage and Property adjustments and credits

89,870.00

Incidental Costs

600.00

Total Permanent R/W Cost

90,470.00

I certify from the records on file that the above data is correct and that the right-of-way necessary for the project has been acquired in the name of the State Highway Dept. of Indiana.

Date: September 22, 1957

Charles M. Dawson
Charles M. Dawson, Director
Right-of-Way Dept.